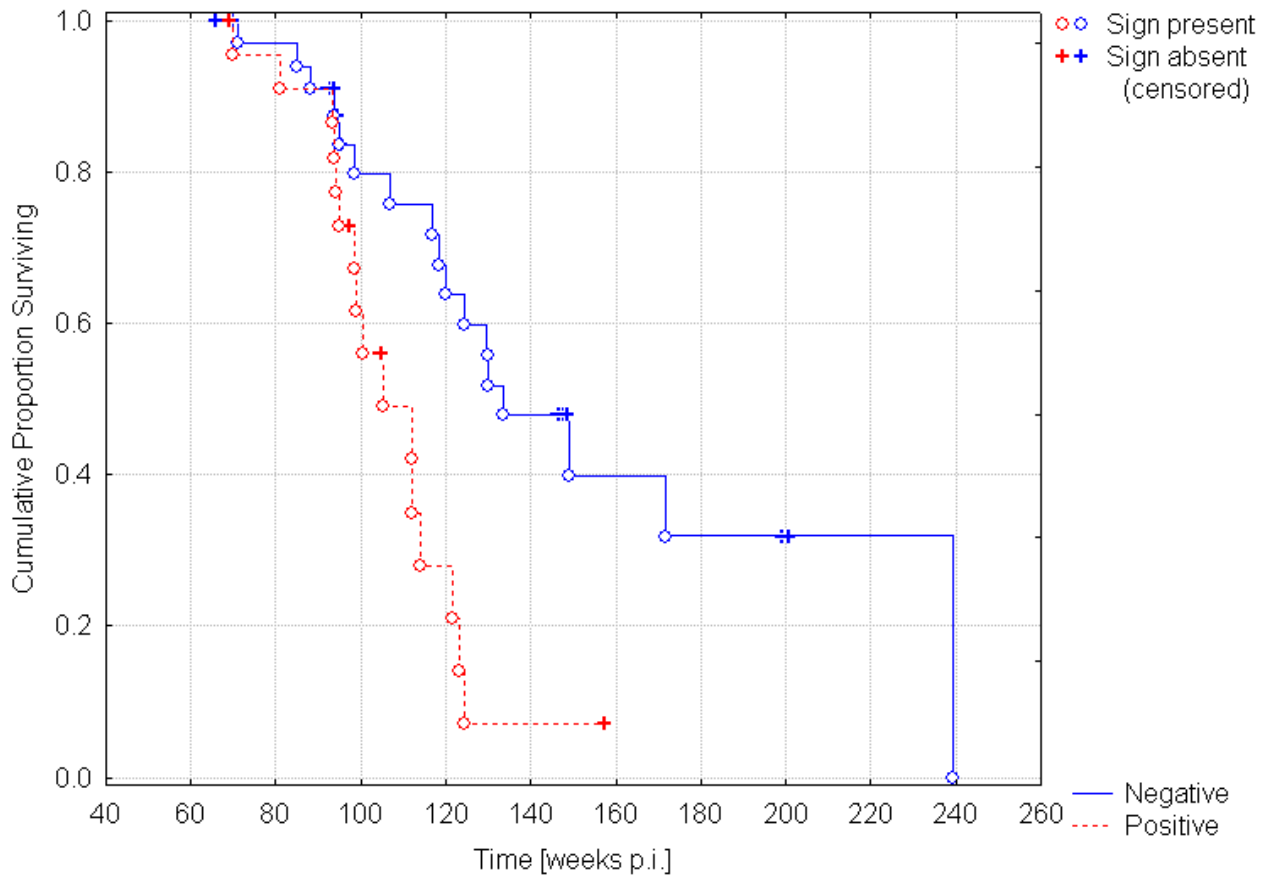
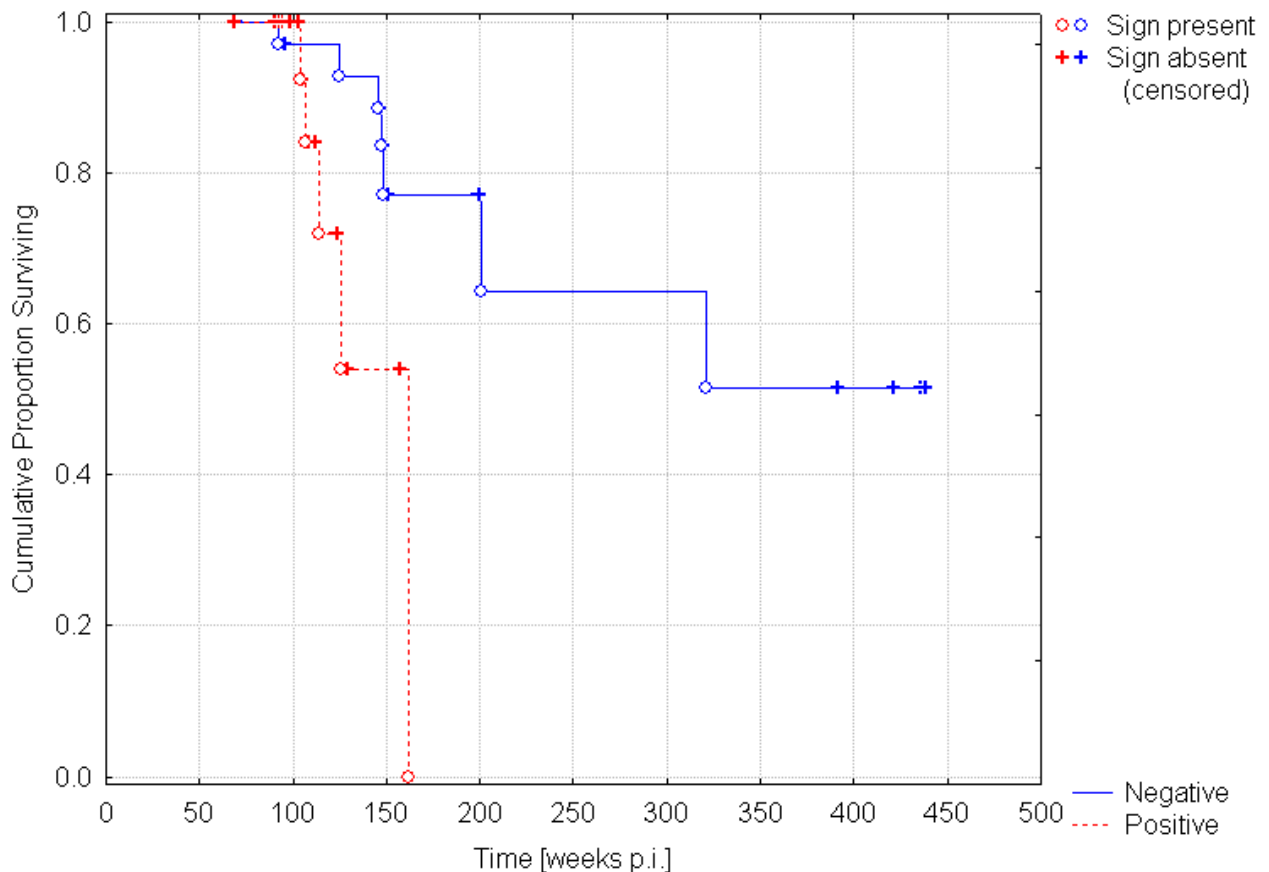


# Kaplan-Meier estimates for the first appearance of each clinical sign in BSE-positive and negative sheep

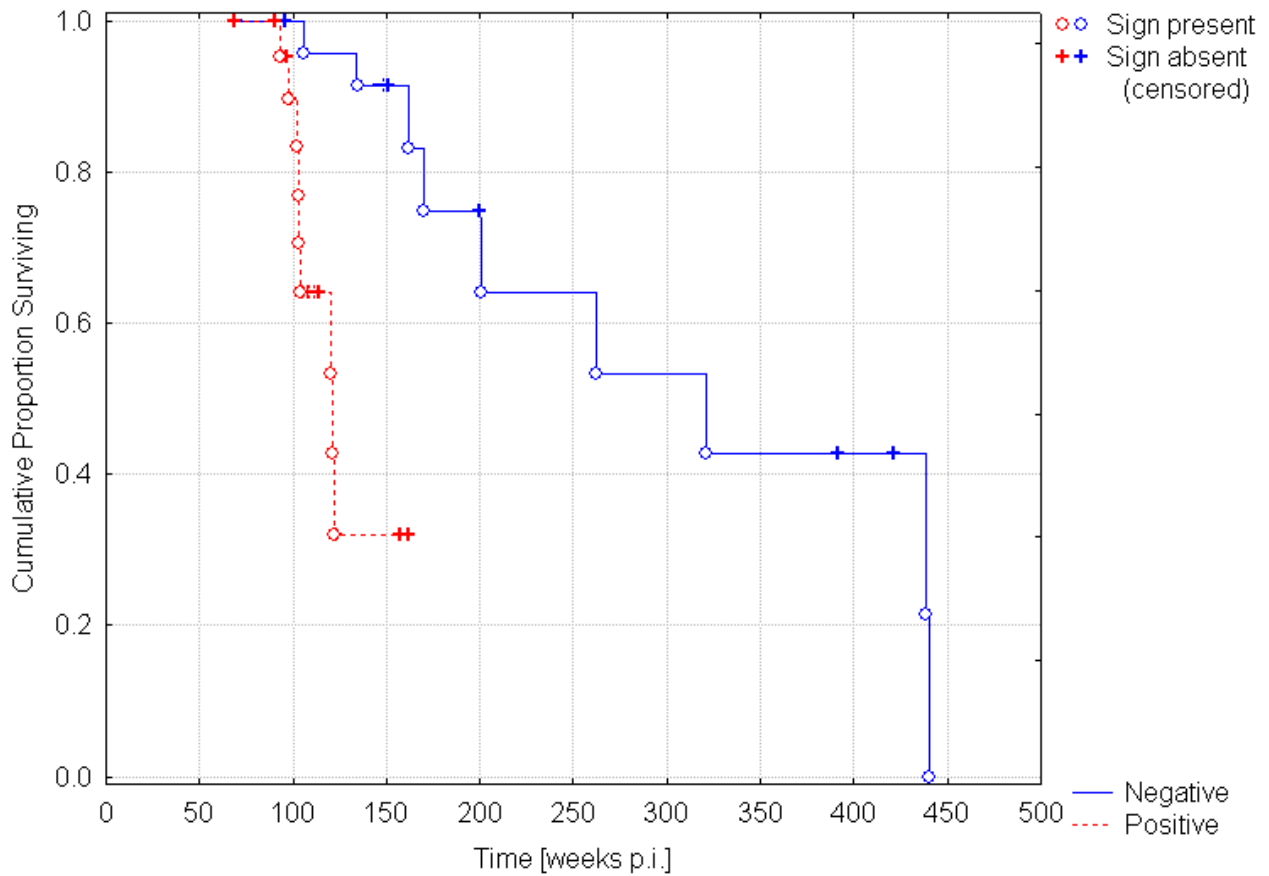
## 1. Change in behaviour



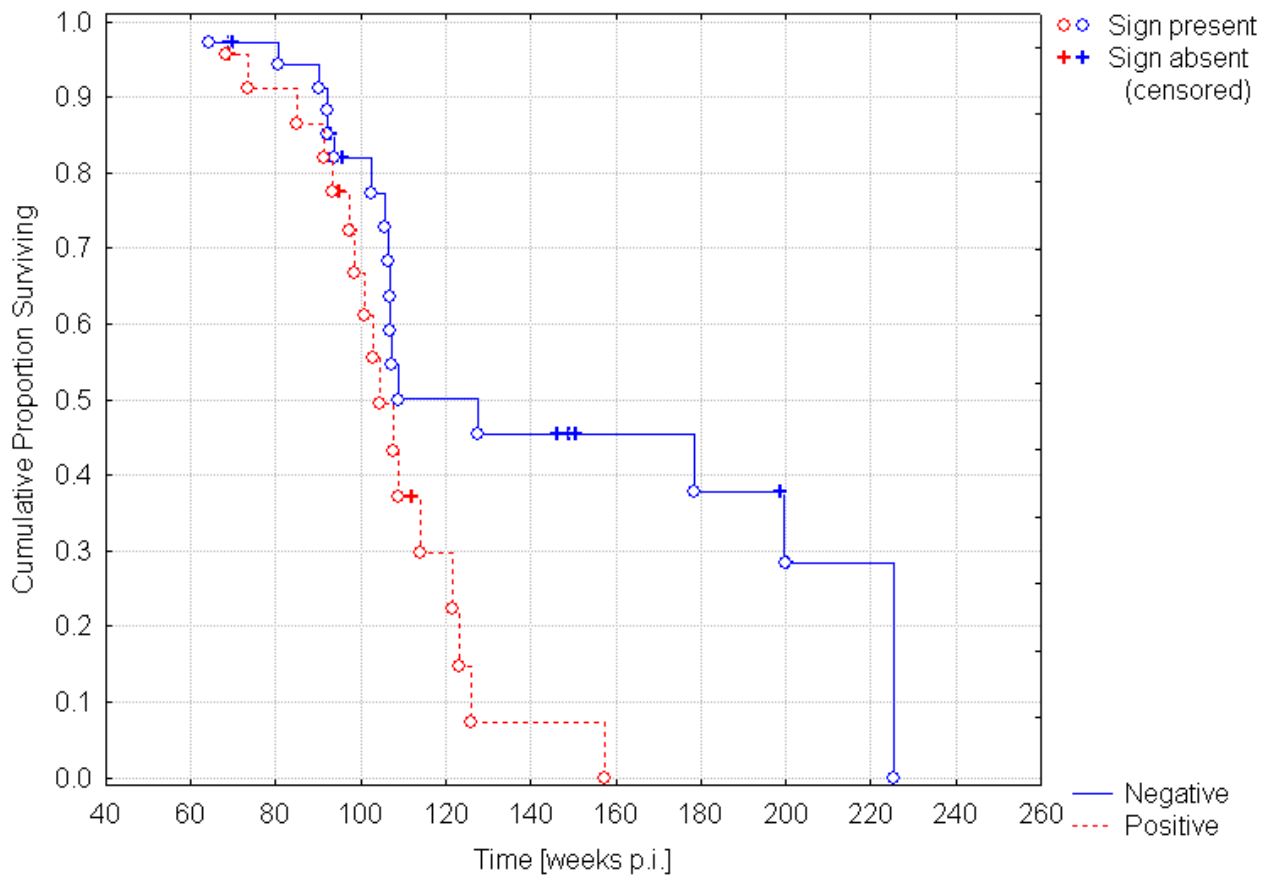
## 2. Bruxism at neurological examination when free



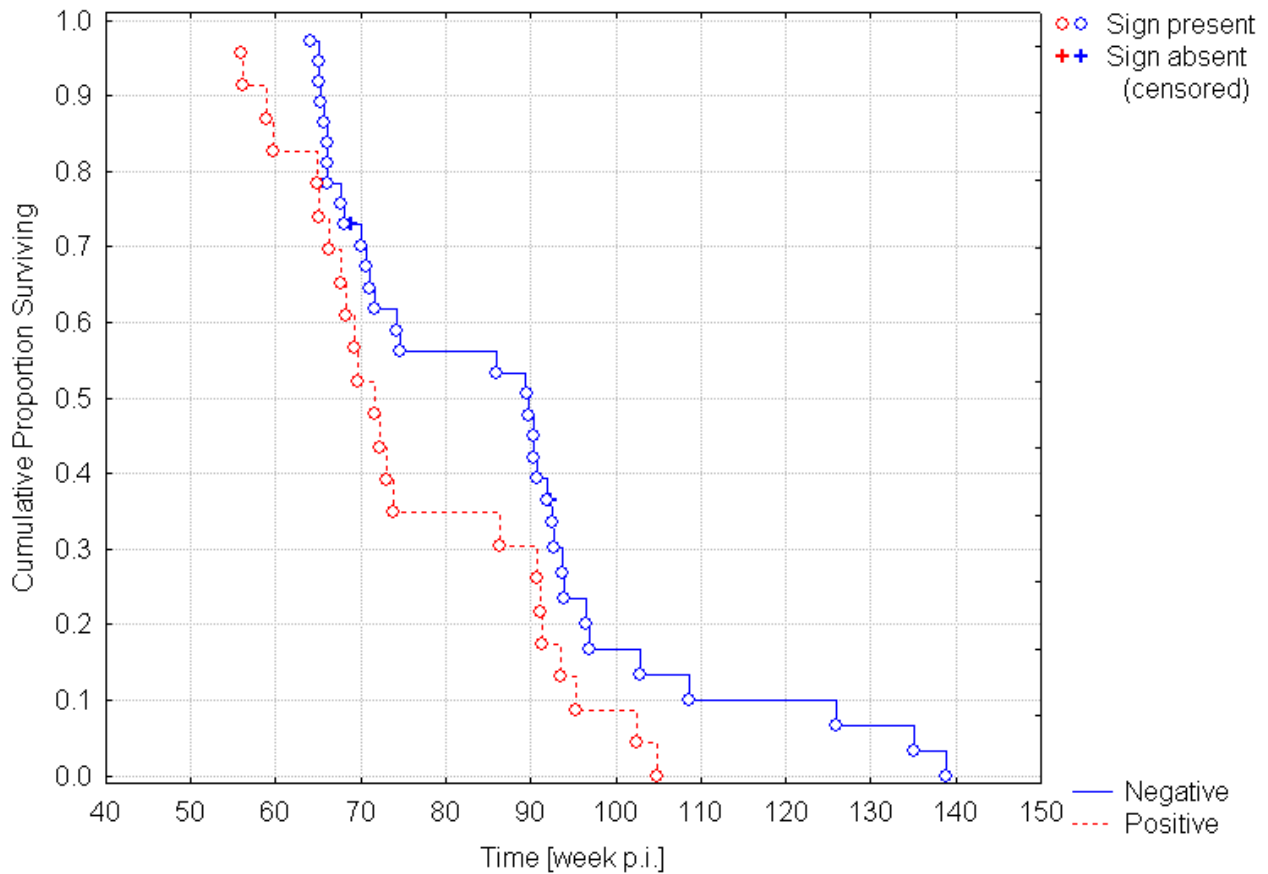
### 3. Bruxism at neurological examination when handled



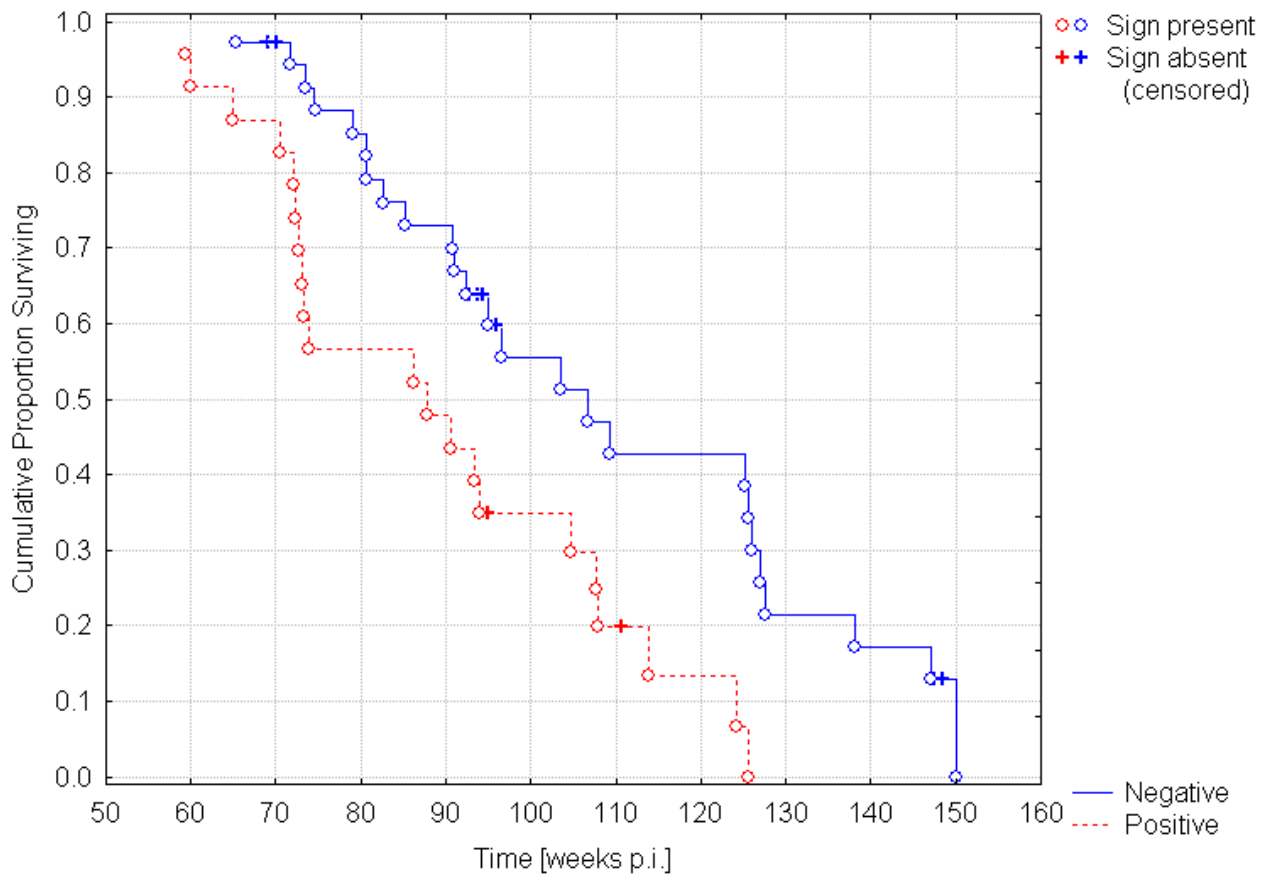
### 4. Bruxism at passive observation



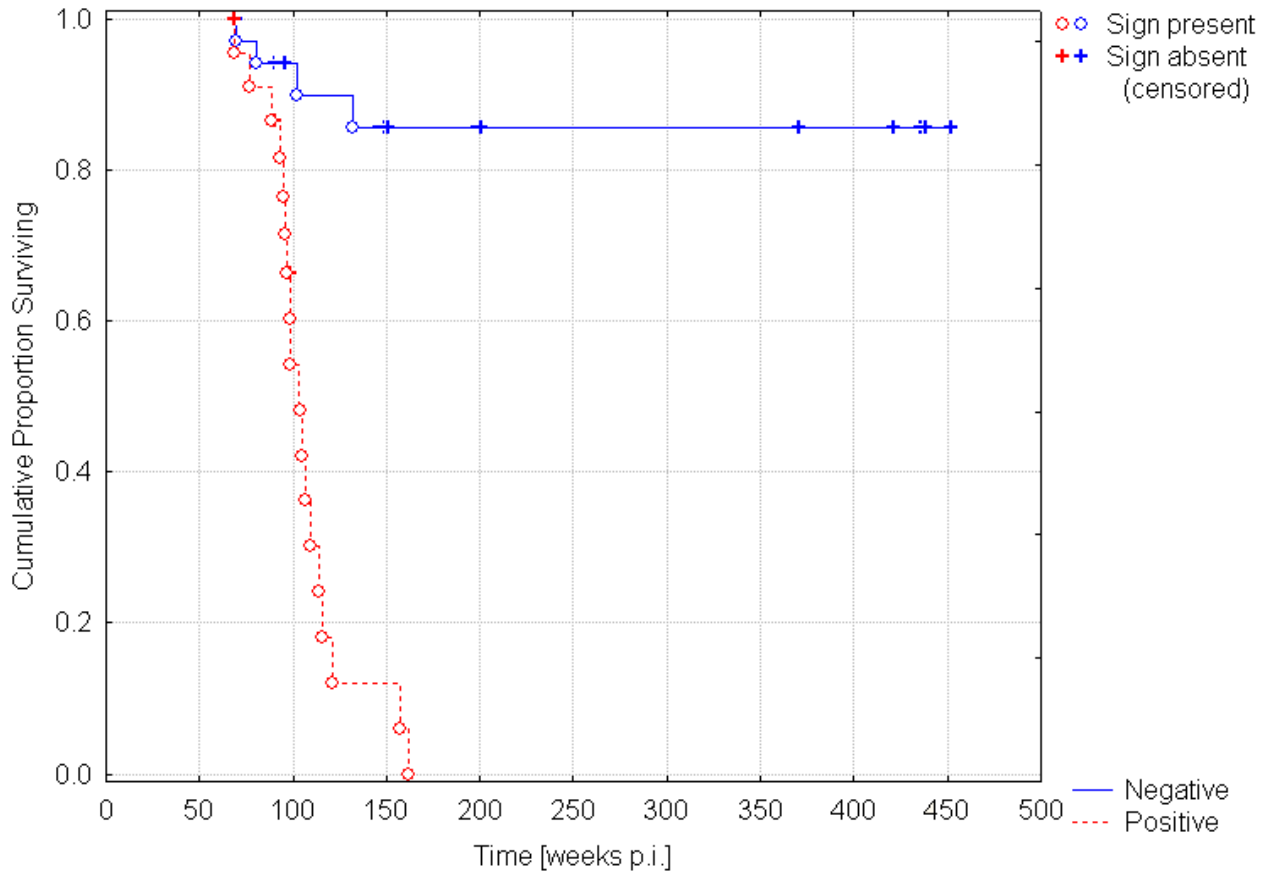
### 5. Rubbing or scratching of body parts at passive observation



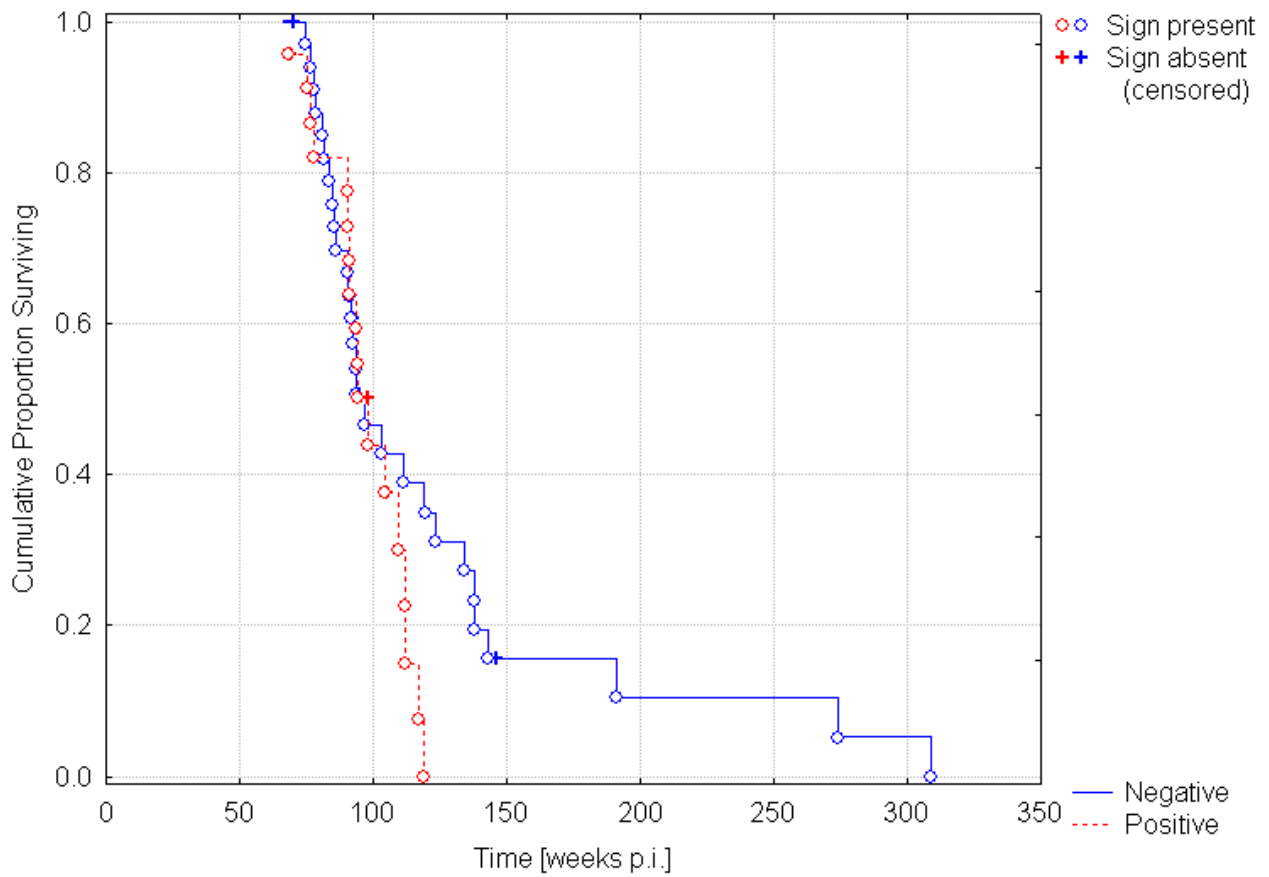
### 6. Nibbling of body parts at passive observation



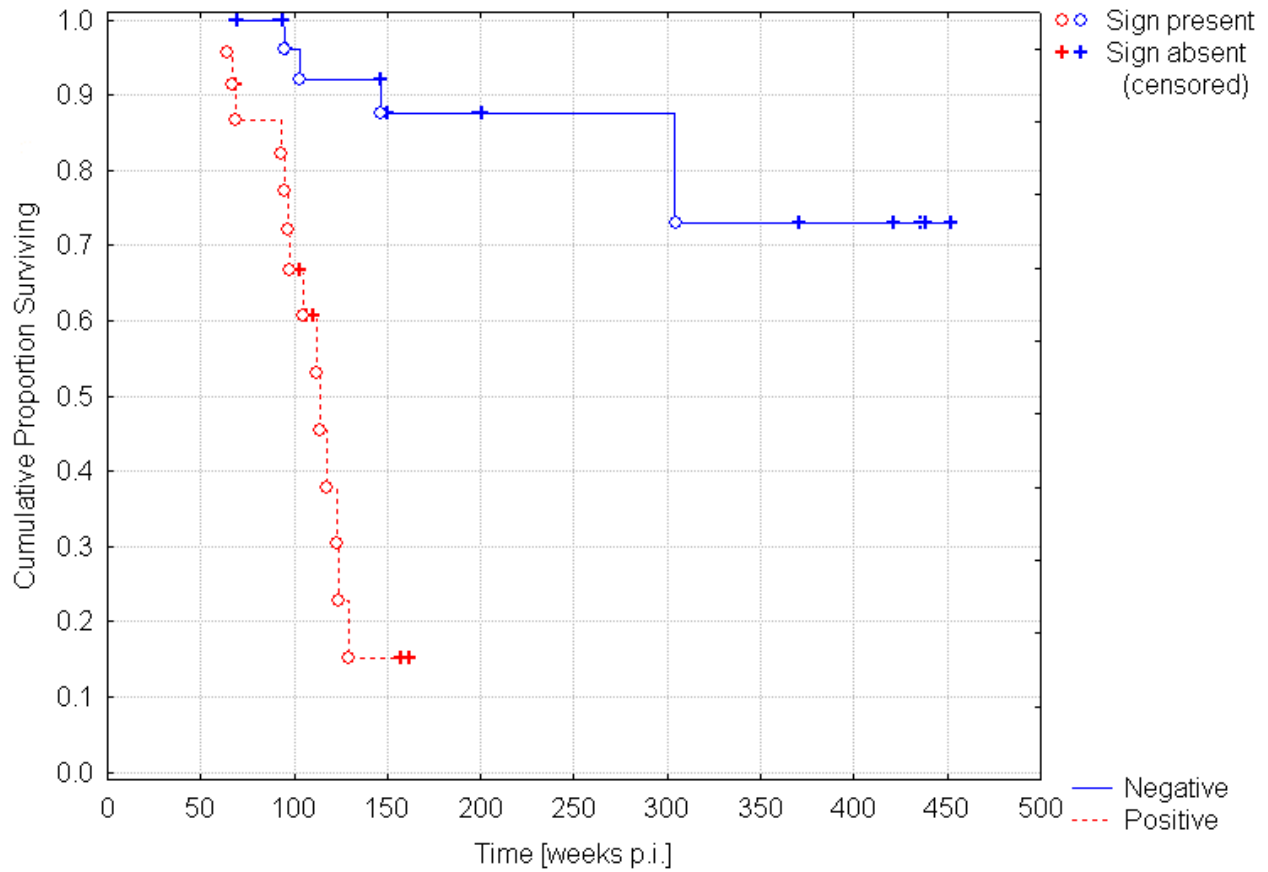
### 7. Positive scratch test



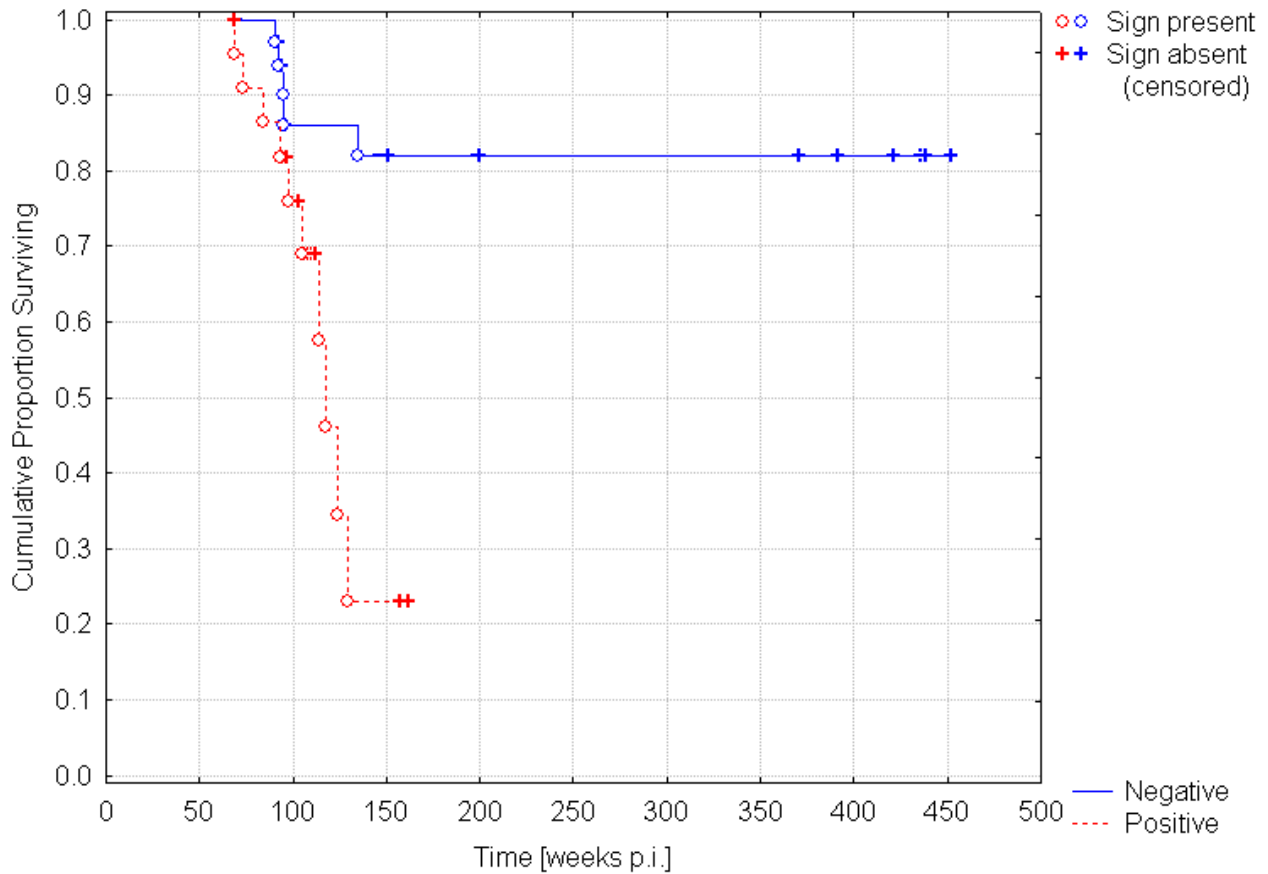
### 8. Fleece changes



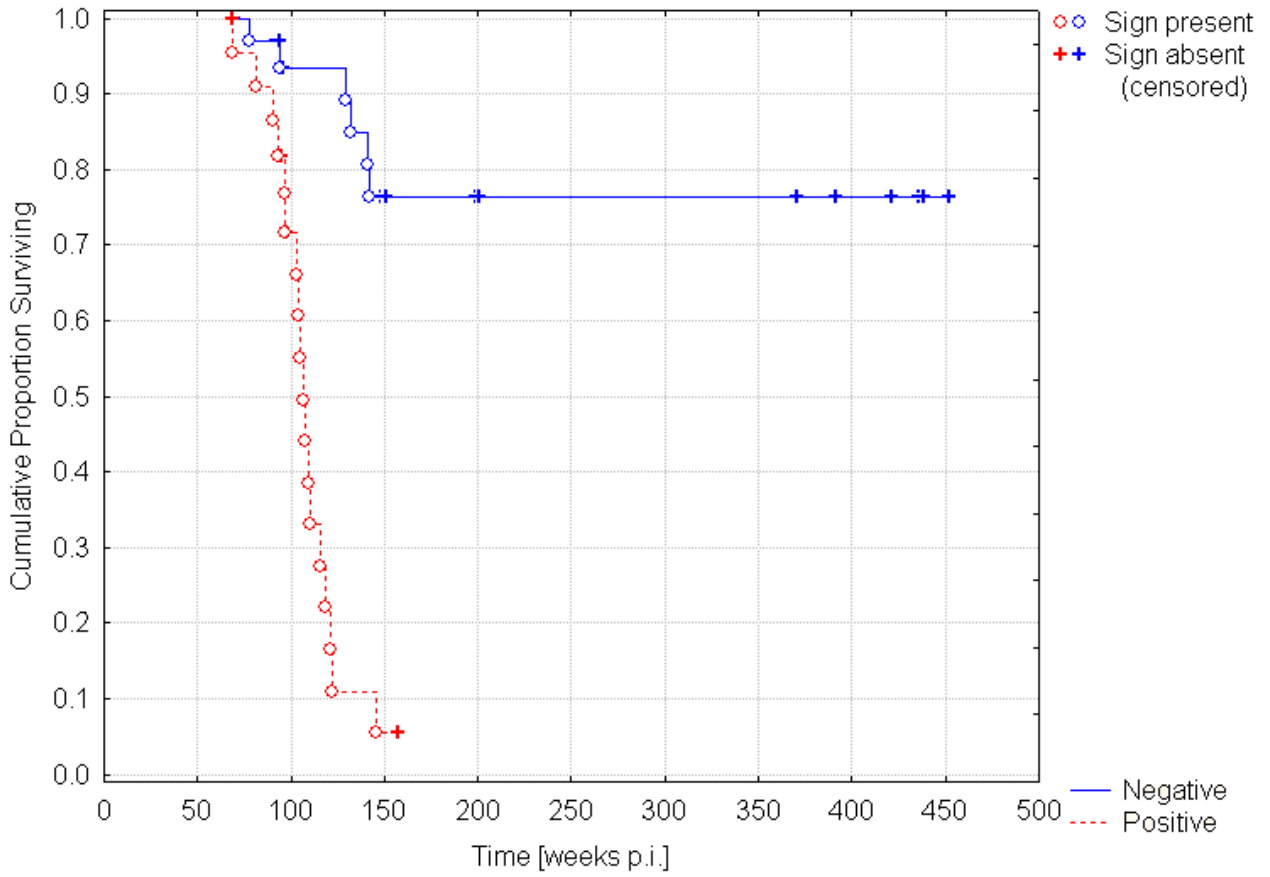
## 9. Alopecia



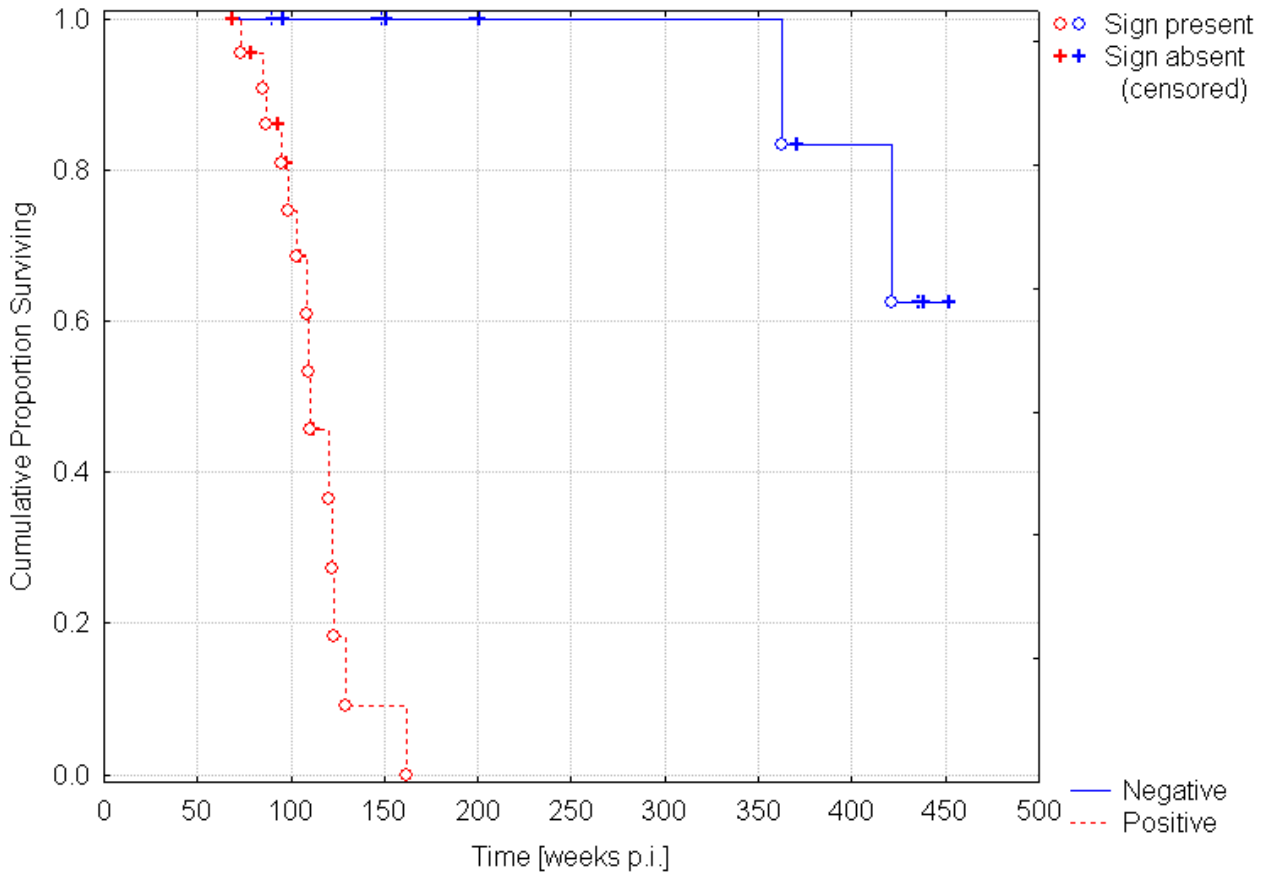
## 10. Skin lesions



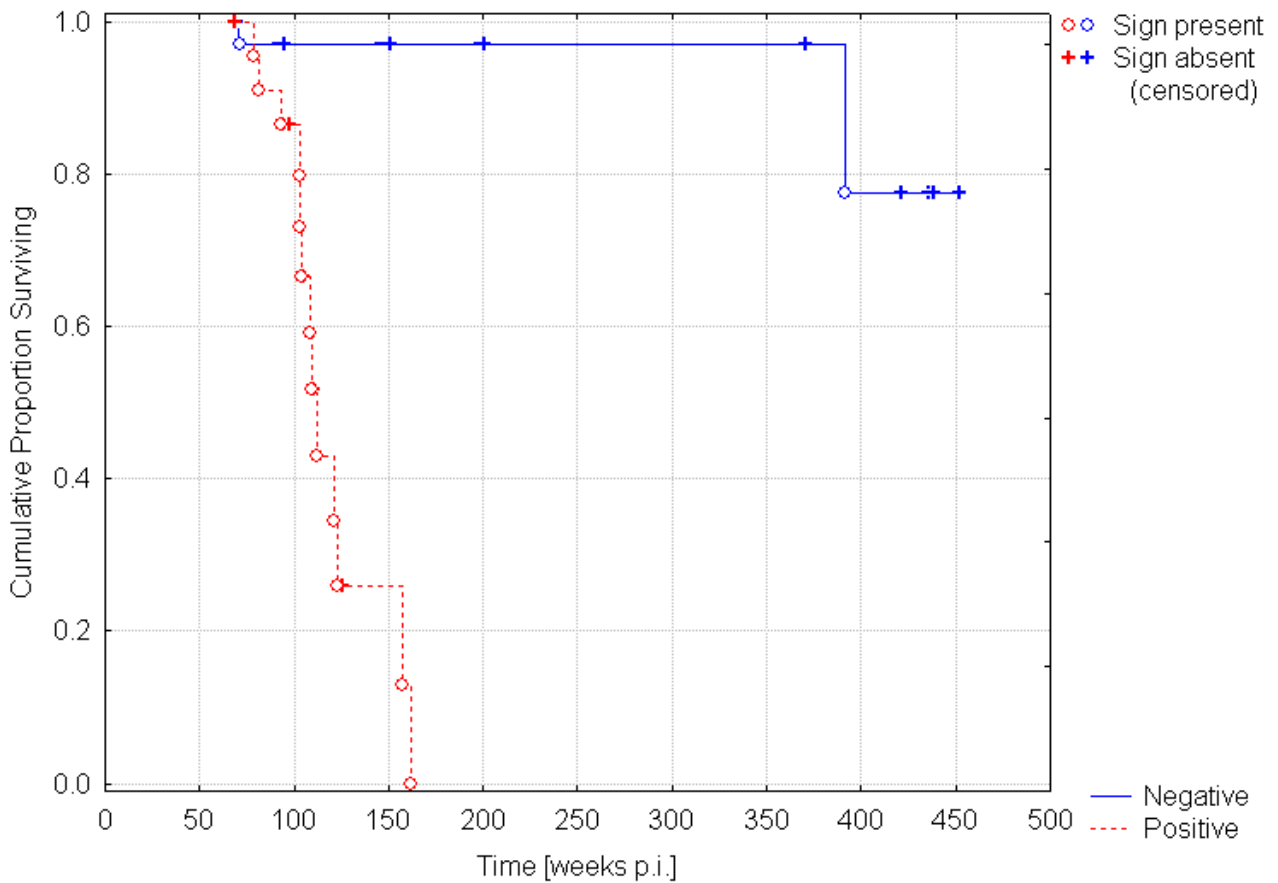
### 11. Self-induced nibble reflex



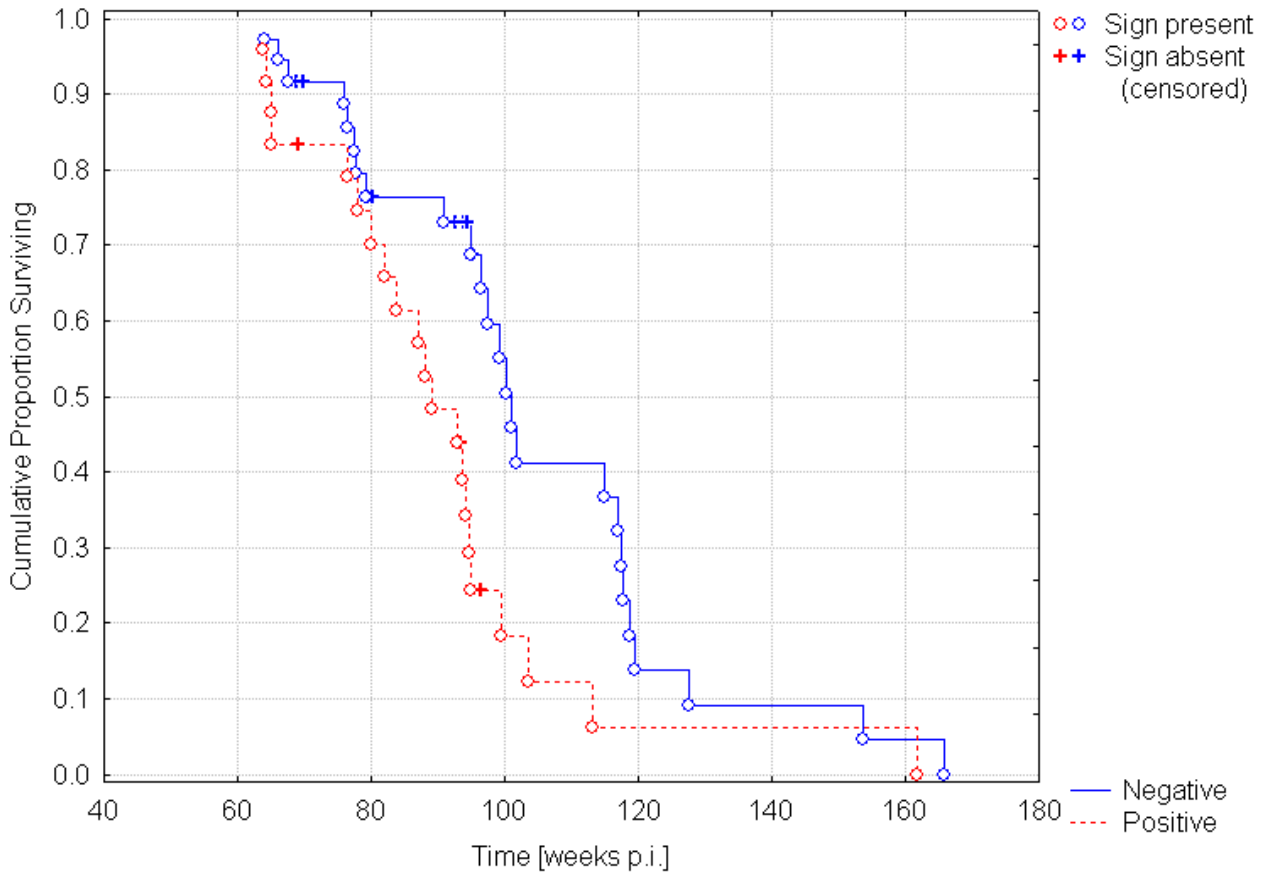
## 12. Tremor



## 13. Ataxia



### 14. Loss of weight



### 15. Loss of body condition

