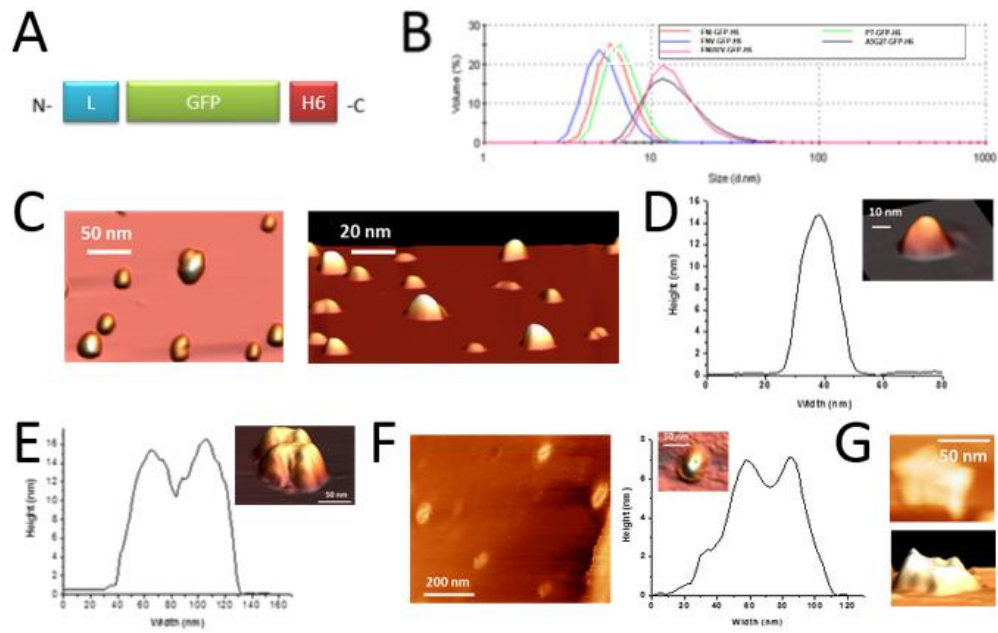
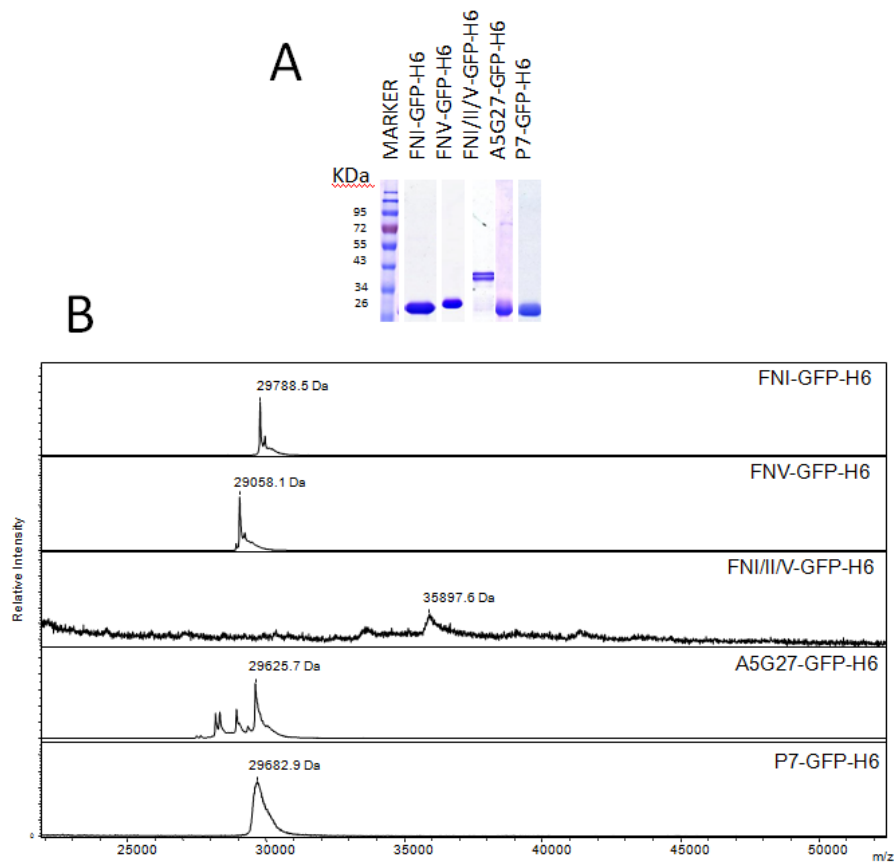


FIGURE 1



COMPLEMENTARY FIGURE 1



Supplementary Figure 1: Characterization of recombinant protein constructs. A) Purified protein constructs visualized by Coomassie Brilliant Blue staining upon electrophoresis on SDS- polyacrylamide gel. B) MALDI-TOF MS analyses of the five constructs confirms protein integrity. A sample of 1 μ l 1:1 (sample: DHAP matrix) mixture was applied on a ground steel plate. Samples were analysed using a lineal operation mode and 25kv acceleration voltage.

FIGURE 2

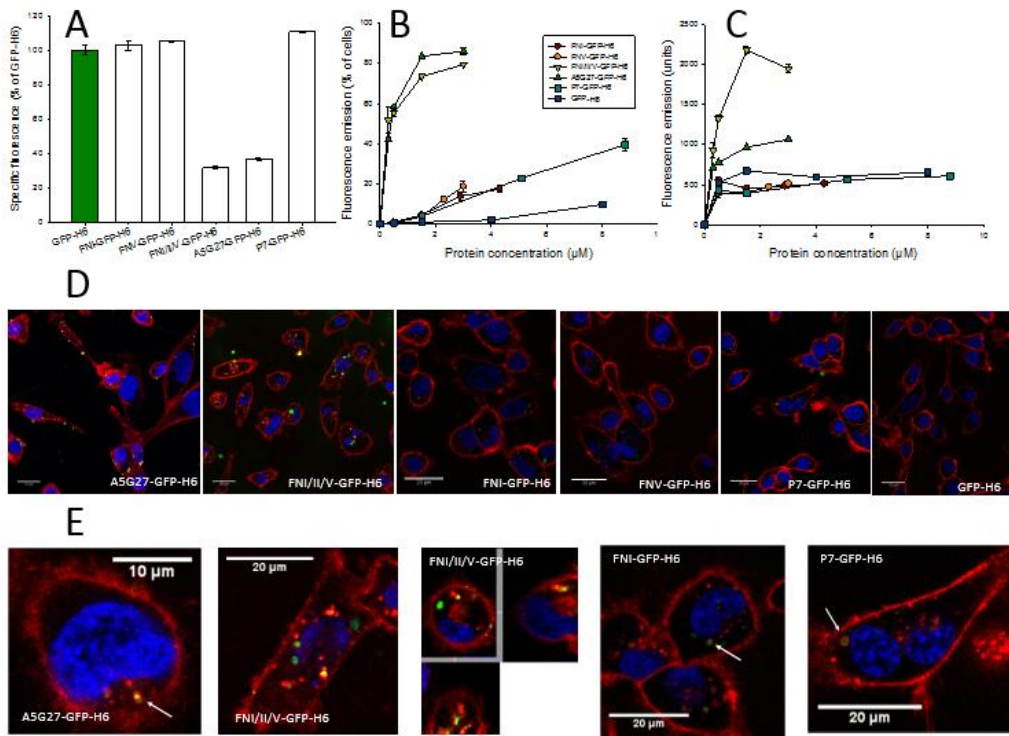


FIGURE 3

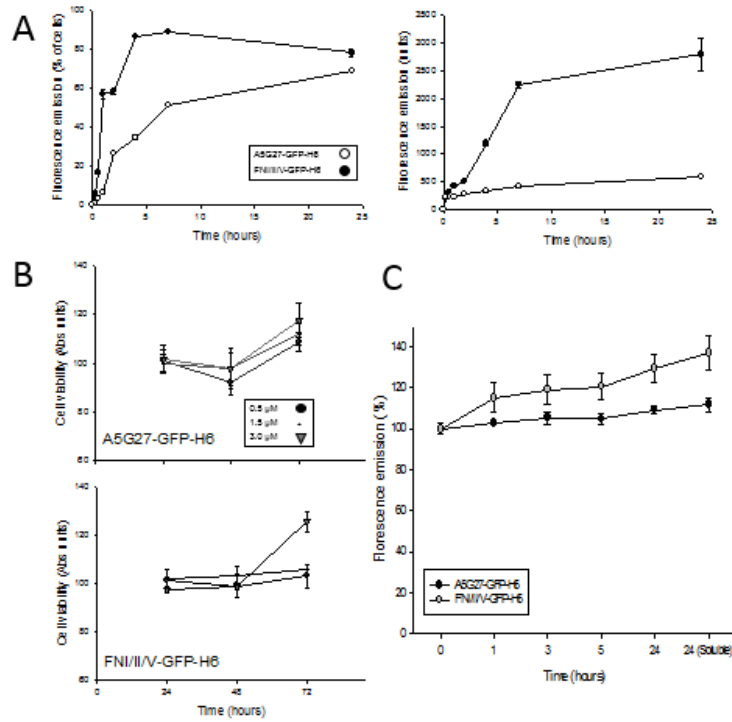


FIGURE 4

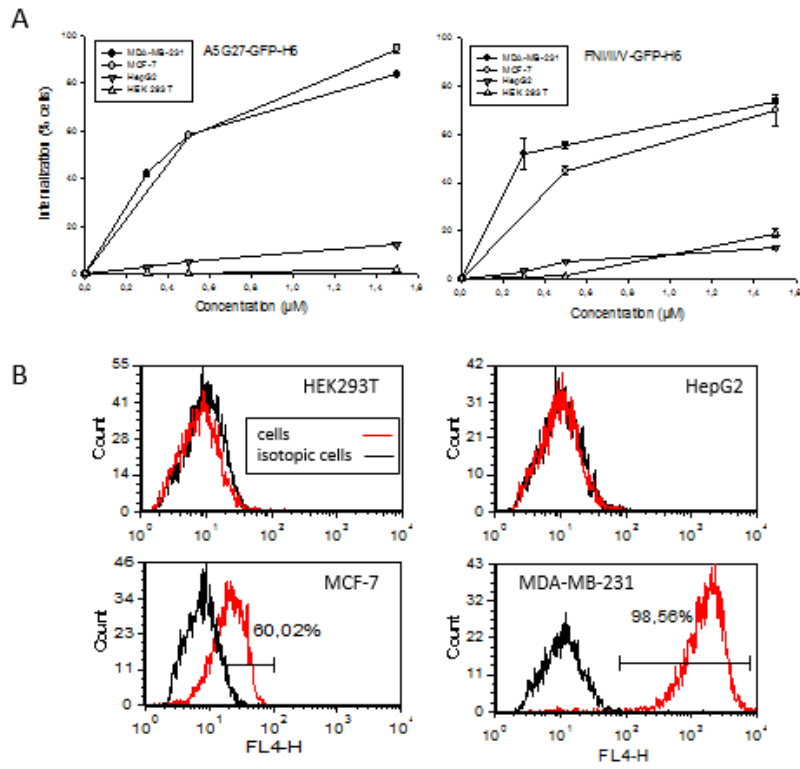


FIGURE 5

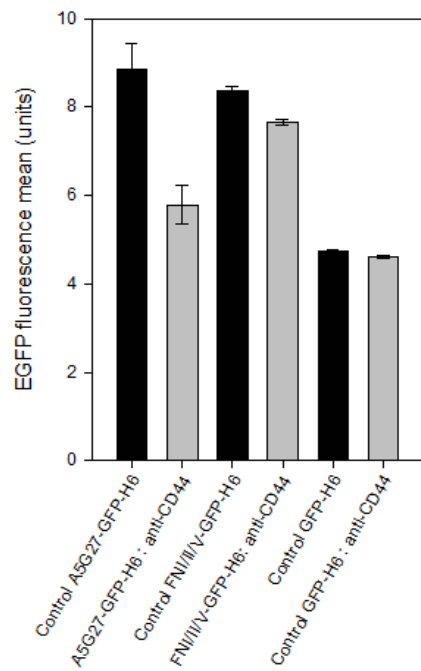


FIGURE 6

