

Simultaneous voltammetric determination of heavy metals by use of crown ether-modified electrodes and chemometrics

Andreu González-Calabuig^a, David Guerrero^a, Núria Serrano^b, Manel del Valle^{a,*}

^a Sensors& Biosensors Group, Department of Chemistry, Universitat Autònoma de Barcelona, Edifici Cn, 08193 – Bellaterra (Spain)

^b Department of Analytical Chemistry, Faculty of Chemistry, Universitat de Barcelona, Martí i Franquès 1-11, 08028 – Barcelona (Spain)

* e-mail: manel.delvalle@uab.es

Received:

Accepted:

Abstract

A three-sensor array consisting of a graphite-epoxy composite electrode (GEC), 4-carboxybenzo-18-crown-6-GEC and 4-carboxybenzo-15-crown-5-GEC was employed for the simultaneous determination of Cd(II), Pb(II) and Hg(II) by differential pulse anodic stripping voltammetry (DPASV). Sensors were firstly studied for the determination of Hg(II); secondly, peak current responses confirmed that all sensors showed differentiated response for the three considered metals. A response model was developed to resolve mixtures of Cd(II), Pb(II) and Hg(II) at the $\mu\text{g L}^{-1}$ level; Discrete Wavelet Transform was selected as preprocessing tool and artificial neural network used for the modelling of the obtained responses.

Keywords: crown ether-modified sensors; electrochemical grafting; heavy metal; stripping voltammetry; artificial neural network

DOI: 10.1002/elan.((will be filled in by the editorial staff))

1. Introduction

The determination of heavy metal ions at trace levels is becoming more important day by day because of the health problems that they can cause in living systems, since they tend to bioaccumulate in their organisms and severe illnesses may be originated. Heavy metals become toxic when they are not metabolized by the body and accumulate in the soft tissues [1]. The main threats to human health from heavy metals are associated with exposure to lead, cadmium, mercury and arsenic. The general population is primarily exposed to mercury via food; fish is the major source of methyl mercury exposure, as also is relevant the use of dental amalgam. Related to cadmium exposure, cigarette smoking is the major source, whereas in non-smokers, food is the most important source. Exposure to lead is mainly via air and food in approximately equal proportions, being children particularly vulnerable [2].

Atomic absorption spectrometry (AAS), inductively coupled plasma optical emission spectrometry (ICP-OES), X-ray fluorescence (XRF), inductively coupled plasma mass spectrometry (ICP-MS), and stripping voltammetric techniques (anodic stripping voltammetry (ASV) and adsorptive stripping voltammetry (AdSV)) are some of the available techniques for the determination of heavy metals in natural samples. Particularly, stripping voltammetry techniques are the most suitable techniques for trace metals analysis in natural samples [3], due to their excellent detection limits, their sensitivity to the presence of different metal species, their capacity to multielement determination, and their relative low cost. Nevertheless, the performance of voltammetry is strongly influenced by the working electrode material. With the aim of developing alternative electrodes for classic mercury electrodes, chemically modified electrodes were considered for metal ion determination.

Thiol rich peptides and macrocyclic compounds, as crown ethers, can be employed as modifiers for metal determination. A simple and flexible approach to attach these compounds to an electrode surface is based on their immobilization on aryl diazonium salt monolayers anchored on the electrode surface, also referred in the literature as electrochemical grafting, which is a valuable alternative to the use of self-assembled monolayers (SAM) for forming stable complexing surfaces [4-7].

Particularly, crown ethers may act as a host, complexing a centre metal, and once introduced into the electrode enhance its selectivity and lower the metal detection limit. To achieve high degree of selectivity one may think to modify them to strongly bind certain metals allowing the complex formation by means of ion-dipole interaction with these metal ions [8]. So, the complexing ability and crown cavity size which is suitable for a particular metal ion have to be considered for its selective detection.

Although some studies devoted to the application of crown ether-modified electrodes for the individual determination of lead [9-11], mercury [12, 13], silver [14], thallium [15], palladium [16] and copper [17] can be found in the literature, related works entailing the simultaneous determination of different heavy metal ions are scarce [6].

Crown ether-modified electrodes not only can be used for metal determination as a single-electrode sensor but also in combination with others forming an electrode arrays with semi-selective ligands for the determination of several metal ions. Such a strategy relies on the modification of electrodes in the array with different complexing agents to provide a highly variate response [18]. The main advantage of a multi-sensor array over the classical one-electrode is that the information provided by the electrode array is significantly higher than that obtained from a single electrode; in this way, multimetal interactions or interfering effects can be modelled and resolved.

In this work, a three-sensor array consisting of one graphite-epoxy composite electrode (GEC) and two GECs modified with 4-carboxybenzo-18-crown-6 (CB-18-crown-6) and 4-carboxybenzo-15-crown-5 (CB-15-crown-5) respectively, which were immobilized through aryl diazonium salt monolayers anchored to the electrode surface was firstly analytically studied for the determination of Hg(II) using voltammetric techniques. Subsequently, this three-sensor array was applied for the first time for the simultaneous determination of Cd(II), Pb(II) and Hg(II) ions in certified samples by voltammetric

techniques. An artificial neural network model was proposed as a tool to maximize the information obtained from the voltammetric data.

2. Experimental

2.1. Chemicals

Potassium ferricyanide $K_3[Fe(CN)_6]$, potassium ferrocyanide $K_4[Fe(CN)_6]$, 2-(N-morpholino)-ethanesulfonic acid (MES), potassium dihydrogen phosphate, sodium monophosphate, methanol, perchloric acid, hydrochloric acid, *N*-hydroxysulfosuccinimide (sulfo-NHS), *N*-(3-dimethylaminopropyl)-*N*'-ethylcarbodiimide hydrochloride (EDC) and sodium nitrite were purchased from Sigma (St. Louis, MO, USA). 4-aminobenzoic acid (ABA) and DL-lysine monohydrochloride were provided by Acros (Geel, Belgium). 4-carboxybenzo-18-crown-6 with a purity of 99% and 4-carboxybenzo-15-crown-5 with purity greater than 98% were provided by Acros and Sigma respectively. All other reagents used were from Merck (Darmstadt, Germany) and Fluka (Buchs, Switzerland). All reagents were of analytical grade. Pb(II), Cd(II) and Hg(II) stock solutions $10^{-2} \text{ mol}\cdot\text{L}^{-1}$ were prepared from $Pb(NO_3)_2\cdot 4H_2O$, $Cd(NO_3)_2\cdot 4H_2O$ and $Hg(NO_3)_2\cdot H_2O$ respectively and standardized complexometrically. Pb(II), Cd(II) and Hg(II) $1000 \text{ mg}\cdot\text{L}^{-1}$ certified standard solutions were purchased from Fluka. $0.1 \text{ mol}\cdot\text{L}^{-1}$ acetic acid/acetate buffer solution (pH 4.5) was used for pH control. Ultrapure water from MilliQ System (Millipore, Billerica, MA, USA) was used in all experiments.

2.2. Apparatus

Voltammetric measurements were performed in an Autolab System PGSTAT 30 (EcoChemie, The Netherlands), in a multichannel configuration, using GPES Multichannel 4.7 software package (EcoChemie). The voltammetric cell was formed by one working graphite epoxy electrodes (GEC) and two working graphite epoxy electrodes modified with 4-carboxybenzo-18-crown-6 (CB-18-crown-6) and 4-carboxybenzo-15-crown-5 (CB-15-crown-5) respectively, a commercial platinum counter electrode (Model 52-67, Crison Instruments, Barcelona, Spain), and a double junction Ag/AgCl reference electrode (Thermo Orion 900200, Beverly, MA, USA).

A pH meter GLP 22 (Crison Instruments, Barcelona, Spain) was used for pH measurements.

Full Paper

All measurements were carried out at room temperature (20°C).

2.3. Procedures

2.3.1. Preparation of graphite epoxy electrodes

Graphite epoxy composite electrodes (GECs) were fabricated by using a PVC tube body (6 mm i. d.) and a small copper disk soldered at the end of an electrical connector. The working surface is an epoxy-graphite conductive composite, formed by a mixture of 20% graphite powder (Merck, Darmstadt, Germany) and 80% of epoxy resin, Epotek H77, and its corresponding hardener (both from Epoxy Technology, Billerica, MA, USA), deposited on the cavity of the plastic body [19]. The composite material was cured at 80 °C for 3 days. Prior to their functionalization, the electrode surface was moistened with MilliQ water and then polished on abrasive sandpaper (400, 600, 800, 1000, and 1200 grit) and finally on alumina polishing strips (301044-001, Orion) in order to obtain a reproducible electrochemical surface.

2.3.2. Preparation of modified GECs

The specific steps for the modification of the GEC are described below [20].

-Diazonium salt electrochemical grafting: The *in situ* generation of the aryl diazonium was performed by adding $5 \cdot 10^{-3}$ equivalents of sodium nitrite to an acidic solution (1 M aqueous HCl) of ABA. These solutions were mixed for about 30 min in an ice bath, prior to the electrochemical grafting process [21] conducted by scanning the potential at 0.2 V s^{-1} from 0 V to -1 V for 100 cycles. The functionalized electrodes were thoroughly rinsed with Milli-Q water and methanol to remove any physisorbed compounds.

-Covalent immobilization of crown ethers via carbodiimide coupling: The carboxyl groups of the electrografted diazonium salt were activated by incubating the functionalized electrodes in a 26 mM EDC and 35 mM sulfo-NHS solution in 100 mM MES buffer (pH 4.5) for 1 h. In order to conjugate the carboxy-functionalized electrode with the carboxy-modified ligands, a lysine spacer was intercalated in between, by using its two amino functionalities to form amido bonds [6]. The surface activated groups reacted overnight with the α -amine group of the lysine at 4°C. Prior to cross linking with EDC/sulfo-NHS, 2.9 mg of 4-carboxybenzo-18-crown-6 or 4-carboxybenzo-15-crown-5 were

incubated with 100 μL 5 mM lysine in 0.1 M MES buffer for 3 h.

Figure 1 illustrates the CB-15-crown-5-GEC and CB-18-crown-6-GEC electrodes modified by electrochemical grafting.

The electrochemical response using 2 mM ferrocyanide/ferricyanide as redox probe in 100 mM phosphate buffer (pH 7.4) was investigated at each functionalization step using cyclic voltammetry (CV) leading voltammograms that confirm the modifications occurring on the electrode surface (Figure not shown). This procedure has been tested [6] with a high repeatability and a noticeable reproducibility.

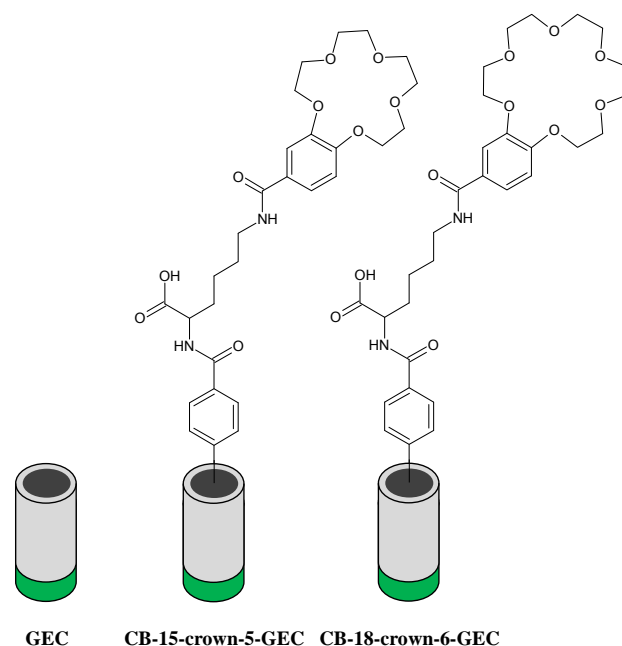


Fig. 1. Scheme of the three-sensor array: GEC, CB-15-crown-5-GEC and CB-18-crown-6-GEC.

2.3.3. Voltammetric measurements

Before each set of measurements, the electrodes were scanned in acetic acid/acetate buffer solution in order to get stable voltammetric responses.

Voltammetric determinations using GEC, CB-18-crown-6-GEC and CB-15-crown-5-GEC of Cd(II), Pb(II) and Hg(II), were done, without the need of any oxygen removal, at a deposition potential (E_d) of -1.4 V, applied with stirring during a deposition time (t_d) of 300 s and followed for a rest period (t_r) of 10 s. Determinations were done by scanning potential from -1.4 to +0.7 V using a step potential of 4 mV and pulse amplitude of 50 mV. Calibration plots were obtained by increasing metal concentrations in pH 4.5 acetic acid/acetate buffer media.

Full Paper

In order to eliminate any remaining bound metals from the electrode, an electrochemical cleaning stage was considered between measurements. This stage was performed by applying a conditioning potential (E_{cond}) of 1.20 V for 240 s after each measurement, in a cell containing fresh buffer solution.

To allow the multimetal simultaneous determination, a response model was built using artificial neural networks (ANN). For this aim, voltammetric scans of a total set of 37 multimetal mixed samples in the concentration range 0 - 200 $\mu\text{g}\cdot\text{L}^{-1}$ were recorded at the same experimental conditions as calibration plots. The set of samples was divided into two data subsets: a training subset formed by 27 samples (72.9%), which were distributed in a factorial design [22] with 3 factors and 3 levels, and used to establish the response model and the testing subset formed by 10 samples (27.1%), randomly distributed along the experimental domain, used to evaluate the model predictive response; additionally 3 certified samples, also containing the three metals randomly distributed along the experimental domain, were used to evaluate the applicability of the three-sensor array for the simultaneous determination of Pb(II), Cd(II) and Hg(II) in real samples.

Training and testing subset samples were manually prepared by appropriate dilution from the prepared metal stock solutions $10^{-2}\text{ mol}\cdot\text{L}^{-1}$ in pH 4.5 acetic acid/acetate buffer, whereas certified samples were manually prepared by appropriate dilution from 1000 $\text{mg}\cdot\text{L}^{-1}$ certified standard solutions in pH 4.5 acetic acid/acetate buffer.

All experiments were carried out without any oxygen removal.

2.3.4. Data processing

In order to reduce the large amount of information generated for each sample (3 sensors x 431 current values at different potential) and its multiway nature a preprocessing stage was necessary to compress the original data. The objective of this step is to reduce the complexity of the input data while preserving the relevant information; also the compression of the data allows to reduce the training time, avoid redundancy in input data and to obtain a model with better generalization ability.

The chosen method was the Discrete Wavelet Transform (DWT) [23], each voltammogram was compressed using Daubechies 3 wavelet mother function and a 4 decomposition level. In this manner, the original data was reduced to 93 coefficients without losing relevant information, achieving a compression ratio up to 92.3%.

Chemometric processing of data was performed by specific routines written by the authors using MATLAB 8.4 (MathWorks, Natick, MA) and its Neural Network Toolbox (v.8.2.1).

3. Results and discussion

As the most novel part of the present work is the part concerning Hg(II) sensing, this was studied in detail; next, the sensor array was employed for the simultaneous determination of the three considered metals, in an electronic tongue approach.

3.1. Calibration data

Most influential parameters in the ASV voltammetric response for a given metal are the operating parameters, such as deposition potential (E_d), the accumulation potential (t_d) and pH of the medium. The optimized compromise conditions for the simultaneous determination of Pb(II), Cd(II) and Hg(II) using the three-sensor array were an E_d of -1.4 V with stirring during a t_d of 300 s and followed by a rest period of 10 s at the same applied potential in 0.1 mol L^{-1} acetic acid/acetate buffer pH 4.5.

Once established the working conditions, the electrodes of the array (GEC, CB-18-crown-6-GEC and CB-15-crown-5-GEC) were analytically characterized for the determination of Hg(II) given there are no previous studies in this regard; on the other hand, responses towards Cd(II) and Pb(II) were already studied in a related work, involving the triad of metals Cd(II), Pb(II) and Cu(II) [6].

First of all, individual calibration of Hg(II) ion by stripping voltammetry (DPASV) was carried out using the three-sensor array. The LOD was calculated as 3 times the standard deviation of the intercept over the slope of the calibration curve of the target ions. LOQ was evaluated by considering 10 times the previous ratio. The lowest value of the linear concentration range was established from the corresponding limit of quantification (LOQ). For LOD and LOQ determinations, eleven different standards of the considered ion were used to build the calibration lines.

The three sensors evaluated provided a well-defined stripping peak over the considered concentration range. Excellent linear responses of peak currents *versus* Hg(II) concentrations was obtained for GEC, CB-18-crown-6-GEC and CB-15-crown-5-GEC up to a maximum concentration level of 200 $\mu\text{g L}^{-1}$. The corresponding

Full Paper

Table 1. Calibration data for the determination of Hg(II) on GEC, CB-18-crown-6-GEC and CB-15-crown-5-GEC at Ed of -1.4 V using a t_d of 120 s at pH 4.5.

	GEC	CB-18-crown-6-GEC	CB-15-crown-5-GEC
Regression^a	$y = 0.157 x + 2.88$	$y = 0.146 + 3.26$	$y = 0.128 + 4.76$
R²	0.985	0.995	0.995
Linear range ($\mu\text{g L}^{-1}$)^b	37 – 200	4243 – 200	4140 – 200
LOD ($\mu\text{g L}^{-1}$)	11	13	12

^ay is the peak height (μA) and x the concentration ($\mu\text{g L}^{-1}$).

^bThe lowest value of the linear range was considered from the LOQ.

regression equations and the correlation coefficient for the sensors of the array are shown in Table 1.

With respect to the sensitivities considered as the value obtained from the slope of the calibration curves, it can be stated that: Hg(II) shows a very similar sensitivity for the three considered sensors suggesting that the three electrodes respond in the same way versus Hg(II). However, comparing the two crown ether - modified sensors it can be observed that their sensitivities are slightly different suggesting that CB-18-crown-6-GEC offers a higher interaction than CB-15-crown-5-GEC with Hg(II). Related to the unmodified GEC it has a sensitivity slightly higher than other sensors, this fact is because the graphite structure where the mercury can be introduced into the own structure of the graphite making it especially sensitive. As shown in Table 1, both LOD and LOQ were at the level of $\mu\text{g L}^{-1}$ for all considered sensors. In comparison with previous results achieved at other crown ether - modified electrodes, the LODs provided by CB-18-crown-6-GEC and CB-15-crown-5-GEC sensors were similar than the LOD obtained using a ferrocenylpolythia crown ether—Nafion-modified glassy carbon electrode [13], and much lower than the LOD achieved using a carbon-paste electrodes modified with 18-crown-6 [12]. It must be point out that in this work an enrichment time of 300 s was selected looking for a compromise between the peak currents and the time of the analysis, nevertheless lower concentrations ranges and better detection limits could easily be achieved using the proposed method by increasing the enrichment time.

Comparing both unmodified GEC and crown ether modified GEC it can be observed that the LOD and LOQ values obtained for both CB-18-crown-6-GEC and CB-15-crown-5-GEC sensors are in the range of those obtained for the unmodified graphite composite

electrode. Therefore the reported calibration data suggest that all considered sensors could be fully suitable for the determination of Hg(II) at low $\mu\text{g}\cdot\text{L}^{-1}$ level in natural samples. However, until no simultaneous determinations of Hg(II) with other heavy metal ions such as Cd(II) and Pb(II) are performed, it cannot be established which of the considered sensor is the best especially in terms of selectivity for Hg(II) determination.

3.2. Multimetal Stripping Voltammetric Measurements

Before the application of the three considered sensors as an array for the simultaneous determination of Cd(II), Pb(II) and Hg(II) is import to know if this array can add some discrimination power to resolve the mixture. Therefore, the cross-response of these sensors was examined.

Considering that the immobilized crown ethers on the GEC surface are used as molecular collector with ability to selectively coordinate with the metal ions, both the ionic diameter of metal ions and the cavity size of the crown ethers play a crucial role for the complex formation by means of ion-dipole interaction with metal ions. Although, it is known that both CB-18-crown-6 and CB-15-crown-5 exhibit a cross-response for Cd(II) and Pb(II) [6], it is unknown whether with Hg(II) has this characteristic response. With this aim voltammetric peak current responses for equal concentrations of metal ion solution ($175 \mu\text{g L}^{-1}$ of Cd(II), Pb(II) and Hg(II)) were recorded using the three-sensor array. Figure 2 shows that, on the one hand, CB-18-crown-6-GEC and GEC exhibit the highest interaction with Pb(II) and Hg(II) being the ion-dipole interaction of CB-18-crown-6-GEC with Hg(II) slightly higher than with Pb(II); on the other

hand, CB-15-crown-5-GEC offers the highest selective complex forming ability with Hg(II) followed by Cd(II). Although, for the three considered sensors Hg(II) shows a similar interaction, it can be seen that CB-18-crown-6-GEC is a little bit more selective than CB-15-crown-5-GEC. Comparing the ionic diameter of the considered metal ions (1.9 Å for Cd(II), 2.1 Å for Hg(II), and 2.4 Å for Pb(II)) with the cavity size of both crown ethers (cavity diameter, 1.7-2.2 Å for CB-15-crown-5 and 2.6-3.2 Å for CB-18-crown-6), the described behavior is consistent with studies by Christensen *et al.* in 1971 who suggested that cation diameter to host cavity size ratios of 0.75-0.90 are favorable for direct ion-crown ether binding [24]. Thus, ratios of 0.66-0.81 and 0.75-0.92 for Hg(II) and Pb(II), respectively, were achieved for CB-18-crown-6 reflecting the size match for those ions. Likewise, a ratio of 0.86-1.11 for CB-15-crown-5 were obtained for Cd(II) consistent with the observed selectivities.

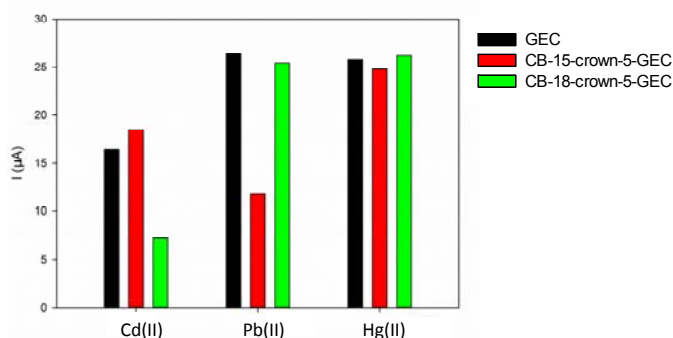


Fig. 2. Differential Pulse anodic stripping voltammetric sensitivity, from peak current of $175 \mu\text{g L}^{-1}$ of Cd(II), Pb(II) and Hg(II) using the three-sensor array. Black: graphite epoxy composite electrode (GEC); red: CB-15crown-5-GEC; green: CB-18-crown-6-GEC.

Therefore, from Figure 2 it can be evidenced the existence of cross-response between the three metal ions and the considered sensors. In this way, whereas additionally a maximum signal for each metal is obtained for a different electrode, the use of the three-sensor array would provide higher information to resolve the multimetal mixture than that obtained from a single electrode. As an example, a sample of four stripping voltammograms obtained using CB-18-crown-6-GEC (arbitrary concentrations) is displayed in Figure 3. Relatively well-defined stripping peaks without any clear evidence of signal splitting or overlapping effect were observed over the considered concentration range. The potential of the oxidation peak of each considered metal in the complex voltammograms was assigned at *ca.* -0.73

V, -0.48 V, and 0.31 V for Cd(II), Pb(II) and Hg(II) respectively. A comparison between the voltammograms provided by unmodified GEC and both crown ethers-modified sensors displayed no significant differences in metal peak shapes and peak potentials (at shown concentration levels), however different degree of metal interactions were observed in agreement with metal complex selectivity (inset in Figure 3). Thus, the stripping voltammetric response will be different depending on the metal ion concentration in each calibration mixture, the used sensor and the metal complex selectivity.

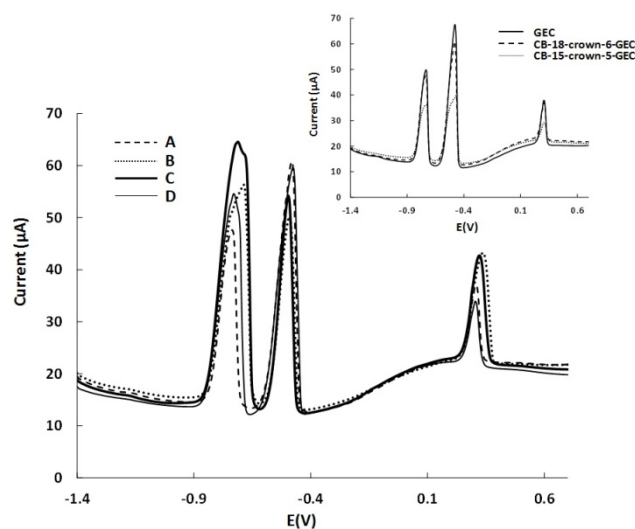


Fig. 3. Some differential pulse anodic stripping voltammograms generated during the building of the response model recorded on a CB-18-crown-6-GEC sensor at pH 4.5 using a E_d of -1.40 V during 300 s and t_r of 10 s. Sample composition: (A) $31.1 \mu\text{g L}^{-1}$ of Cd(II), $147.1 \mu\text{g L}^{-1}$ of Pb(II) and $27.5 \mu\text{g L}^{-1}$ of Hg(II); (B) $124.9 \mu\text{g L}^{-1}$ of Cd(II), $92.5 \mu\text{g L}^{-1}$ of Pb(II) and $136.2 \mu\text{g L}^{-1}$ of Hg(II); (C) $177.4 \mu\text{g L}^{-1}$ of Cd(II), $70.0 \mu\text{g L}^{-1}$ of Pb(II) and $80.1 \mu\text{g L}^{-1}$ of Hg(II); (D) $94.2 \mu\text{g L}^{-1}$ of Cd(II), $162.9 \mu\text{g L}^{-1}$ of Pb(II) and $7.5 \mu\text{g L}^{-1}$ of Hg(II). Inset: comparison between the response of the three-sensor array for sample composition (A).

As the next step, the sets of voltammograms of heavy metal mixtures obtained from the three-sensor array were postulated to be used to calibrate Cd(II), Pb(II) and Hg(II) using an appropriate ANN model that may consider any non-linearity or splitting in the determination of the considered metal ions.

3.3. Quantification of the metal mixtures

Once the data were compressed by use of Wavelet Transform in this study case, the first step in building the appropriate ANN model is choosing the topology of the

Table 2. Results of the fitted regression lines for the comparison between obtained vs. expected values, for the training and testing subsets of samples and the different metal species (intervals calculated at the 95% confidence level).

	<i>Metal</i>	<i>Correlation</i>	<i>Slope</i>	<i>Intercept (ppb)</i>	<i>RMSE (ppb)</i>	<i>NRMSE</i>	<i>Total RMSE (ppb)</i>	<i>Total NRMSE</i>
train subset	Hg(II)	0.999	0.99±0.04	0.74±4.91	3.89	0.019	3.69	0.018
	Pb(II)	0.999	0.99±0.02	0.49±2.46	1.97	0.010		
	Cd(II)	0.998	0.99±0.05	0.71±5.95	4.69	0.023		
test subset	Hg(II)	0.982	1.25±0.39	-14.26±40.44	21.71	0.109	19.35	0.096
	Pb(II)	0.986	0.94±0.25	16.11±28.66	14.10	0.071		
	Cd(II)	0.927	0.77±0.51	35.24±58.97	23.17	0.116		

RMSE: root mean square error; NRMSE: normalized root mean square error

neural network used. Normally, given the difficulties to predict the optimal settings in advance this is a trial-and-error process, where several parameters (training algorithms, number of hidden layers, transfer functions, etc.) are fine-tuned in order to find the best configuration that optimizes the performance of the model [25].

In consequence, the samples from the training subset were used for building the ANN model, and its accuracy was then evaluated towards samples of the external test subset by employing the developed model to predict the concentrations of the metals of those samples (external validation). Taking into account that the external test subset data is not used at all for the modelling, its goodness of fit is a measure of the completed modelling performance.

Model prediction abilities are shown in the comparison graphs (obtained vs. expected concentrations) for all ions, both for training subset and testing subsets. The factors considered for the selection of the best model were the accuracy of fit, evaluated as the smaller RMSE (root mean squared error) [26] and additionally, regression parameters from the comparison graphs close to the ideal values (i.e. slope and correlation coefficient equal 1, and intercept equal 0), meaning that there are no significant differences between the values predicted by the ANN model and those expected and provided by the reference method.

In our case, the resolution of the Cd(II), Pb(II) and Hg(II) mixtures was attempted using the data from the three voltammetric sensor array. To this aim, the set of samples was measured with the three electrodes (unmodified GEC, CB-15-crown-5-GEC and CB-18-crown-6-GEC) and the obtained voltammetric responses were compressed employing DWT and the different

ANN models were optimized. After a systematic study optimizing the different parameters, the final architecture of the ANN model had 93 neurons in the input layer, 4 neurons and *satlins* transfer function in the hidden layer and 3 neurons and *purelin* transfer function in the output layer, providing the concentrations of the three species considered. Figure 4 illustrates the comparison graphs of predicted vs. expected concentrations for the considered compounds for training (●, solid line) and testing subsets (○, dashed line). As it can be observed, a satisfactory trend was obtained for all three metal ions with regression lines close to the theoretical ones (long dashed line). Table 2 shows the calculated linear comparison parameters being near the ideal value, with correlation coefficients and slopes with values very close to 1 and intercepts quite close to 0.

Additionally, to assess the applicability of the three-sensor array to real samples, an attempt was performed to simultaneously determine Cd(II), Pb(II) and Hg(II) in 3 certified samples, randomly distributed along the experimental domain. Figure 4 (☆) shows the linear regression results for Cd(II), Pb(II) and Hg(II). The general trend is quite satisfactory for all the considered metal ions with slopes and intercepts close to 1 and 0 respectively, and with correlations being also significant (Table 2). Although, Cd(II) is the analyte with the worst performance especially with a somewhat lesser correlation and higher confidence interval of the intercept value.

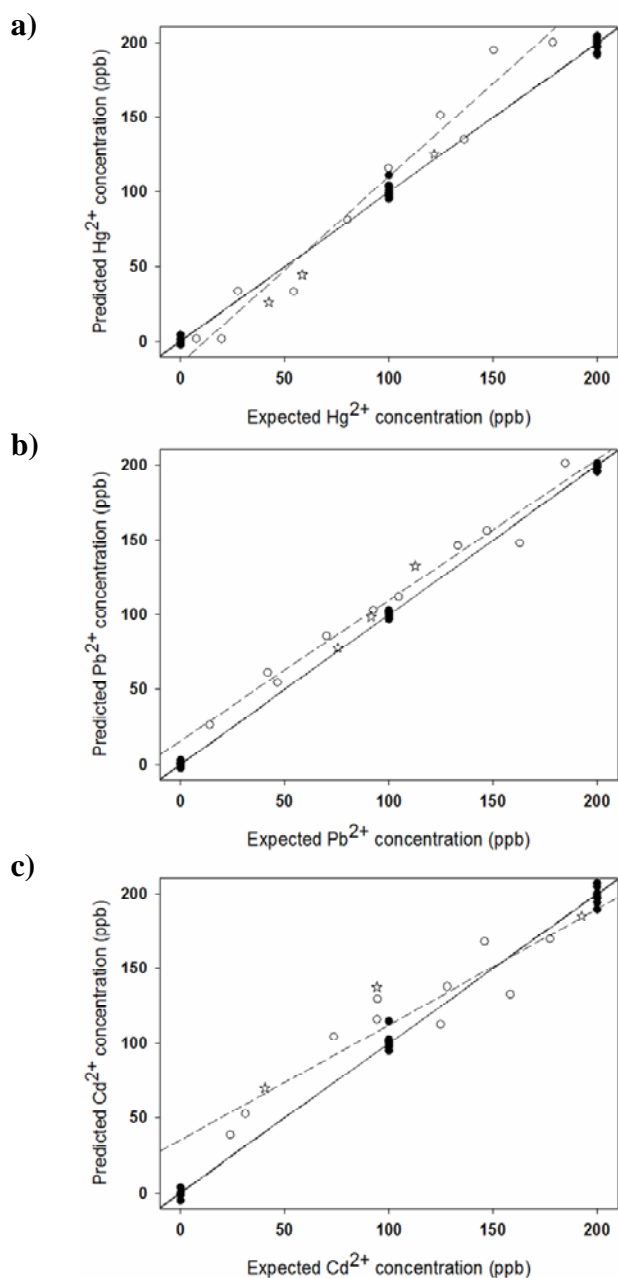


Fig. 4. Modelling ability of the optimized ANN for the three-sensor array. Sets adjustments of obtained vs. expected concentrations for (a) Cd(II), (b) Pb(II) and (c) Hg(II), for training subset (●, solid line), testing subsets (○, dashed line) and certified samples (☆). Long dashed line corresponds to theoretical diagonal line.

4. Conclusions

In this work, a three-sensor array constituted by an unmodified GEC and two GECs modified with CB-18-crown-6 and CB-15-crown-5 respectively, which were immobilized on aryl diazonium salt monolayers anchored to the electrode surface, was successfully applied for the

simultaneous determination of Cd(II), Pb(II) and Hg(II) by DPASV. The three-sensor array was firstly analytical studied for the determination of Hg(II) providing a well-shaped stripping peak over the considered concentration range. The achieved LODs and LOQs were at levels of $\mu\text{g L}^{-1}$, which are similar or even much lower to those obtained for the determination of Hg(II) with other crown ether - modified electrodes [12-13].

Taking advantage of the crown ethers complex forming ability with the considered metal ions, the use of the three-sensor array allows the existence of a cross-response between the three metal ions and the considered sensors adding the discrimination power to resolve the Cd(II), Pb(II) and Hg(II) mixture.

In this sense, in this work, the simultaneous quantification of Cd(II), Pb(II) and Hg(II) was satisfactory achieved by combining the set of voltammetric measurements with chemometric tools. Thus, voltammetric data obtained using the three-sensor array was preprocessed by DWT and coupled with an artificial neural network. The experiments exhibited similar performance in all training and testing correlation coefficients, obtained from the predicted vs. expected concentrations comparison graphs, which were in all cases higher than 0.927. Under the above mentioned conditions, the simultaneous determination of Cd(II), Pb(II) and Hg(II) in certified samples using the three-sensor array was successfully attempted obtaining a satisfactory trend for the three considered metal ions with correlation coefficients of 0.998 and 0.999 for Pb(II) and Hg(II), respectively, whereas for Cd(II) a lower correlation (0.964) and a higher confidence interval of the intercept value are achieved, the recovery values were 80.7%, 109.4% and 138.1% for Hg(II), Pb(II) and Cd(II) respectively. In similar works performed, Cd(II) has been always the worst performing metals probably because of non-linearities in measured signals originated at intermetallic reduced compounds [6,27].

At the sight of the satisfactory results reached in this work, the proposed methodology seems to be perfectly suitable for the determination of heavy metals ions in environmental and biological samples at the ultra-trace level. Even so, further research focused on the application of the proposed method for drinking water analysis is required taking into consideration the guidelines for drinking water quality [28]; since Cd(II) and Pb(II) could be successfully determined according to the proposed experimental conditions [6], whereas for Hg(II) determination an increase of the deposition time would still be required.

5. Acknowledgements

The authors acknowledge financial support from the Spanish Ministry of Science and Innovation (MINECO, through projects CTQ2013-41577-P and CTQ2012-32863). M del Valle acknowledges support by the Catalonia program ICREA Academia.

6. References

- [1] E. Lawrence, A.R.W. Jackson, J.M. Jackson, *Longman Dictionary of Environmental Science*, Addison Wesley Longman, Harlow, UK, **1998**.
- [2] L. Järup, *British Medical Bulletin* **2003**, *68*, 167–182.
- [3] J. Wang, *Stripping Analysis: Principles, Instrumentation and Applications*, VCH, Deerfield Beach, FL **1985**.
- [4] J. Gooding, D. Hibbert, W. Yang, *Sensors* **2001**, *1*, 75–90.
- [5] N. Serrano, B. Prieto-Simón, X. Cetó, M. del Valle, *Talanta* **2014**, *125*, 159–166.
- [6] N. Serrano, A. González-Calabuig, M. del Valle, *Talanta* **2015**, *138*, 130–137.
- [7] C. Pérez-Ràfols, N. Serrano, J.M. Díaz-Cruz, C. Ariño, M. Esteban, *Talanta* **2015**, *144*, 569–573.
- [8] J. W. Steed, J. L. Atwood, *Supramolecular Chemistry*, Wiley, Chichester, UK **2009**.
- [9] S. V. Prabhu, R. P. Baldwin, L. Kryger, *Electroanalysis* **1989**, *1*, 13–21.
- [10] S. Anandhakumar, J. Mathiyarasu, *Microchim. Acta* **2013**, *180*, 1065–1071.
- [11] V. S. Ijeri, A. K. Srivastava, *Anal. Sci.* **2001**, *17*, 605–608.
- [12] J. Wang, M. Bonakdar, *Talanta* **1988**, *35*, 277–280.
- [13] G. Zhiqiang, L. Peibiao, Z. Zaofan, *Microchem. J.* **1991**, *43*, 121–132.
- [14] S. Tanaka, H. Yoshida, *Talanta* **1989**, *36*, 1044–1046.
- [15] S. Cheraghi, M. A. Taher, H. Fazelirad, *Microchim. Acta* **2013**, *180*, 1157–1163.
- [16] M. V. Tsymbal, I. Ya. Tuijan, Z. A. Temerdashev, K. Z. Brainina, *Electroanalysis* **1994**, *6*, 113–117.
- [17] V. S. Ijeri, A. K. Srivastava, *Fresenius J. Anal. Chem.* **2000**, *367*, 373–377.
- [18] M. del Valle, *Electroanalysis* **2010**, *22*, 1539–1555.
- [19] A. Bonanni, M.J. Esplandiu, M.I. Pividori, S. Alegret, M. del Valle, *Anal. Bioanal. Chem.* **2006**, *385*, 1195–1201.
- [20] C. Ocaña, M. del Valle, *Microchim. Acta* **2014**, *181*, 355–363.
- [21] D. Belanger, J. Pinson, *Chem. Soc. Rev.* **2011**, *40*, 3995–4048.
- [22] X. Cetó, F. Céspedes, M.I. Pividori, J.M. Gutiérrez, M. del Valle, *Analyst* **2012**, *137* 349-356.
- [23] M. del Valle, R. Muñoz, J.M. Gutiérrez, *Wavelets: Classification, Theory and Applications*, Nova Science Pub Inc, New York, US, **2011**.
- [24] J. J. Christensen, J. O. Hill, R. M. Izatt, *Science* **1971**, *174*, 459-467.
- [25] F. Despagne, D. L. Massart, *Analyst* **1998**, *123*, 157R-178R.
- [26] X. Cetó, F. Céspedes, M. del Valle, *Microchim. Acta*, **2013**, *180*, 319-330.
- [27] J. M. Gutierrez, L. Moreno-Baron, F. Céspedes, R. Muñoz, M. del Valle, *Electroanalysis* **2009**, *21*, 445-451.
- [28] *Guidelines for Drinking-water Quality - 4th ed*, World Health Organization, Geneva, Switzerland, **2011**.