

ChemElectroChem

Supporting Information

Less is More: A Comprehensive Study on the Effects of the Number of Gas Diffusion Layers on Air–Cathode Microbial Fuel Cells

Pilar Sánchez-Peña, Jesús Rodríguez, Raquel Montes, Juan Antonio Baeza,* David Gabriel, Mireia Baeza, and Albert Guisasola

Author Contributions

P.S.-P. Conceptualization:Equal; Data curation:Lead; Investigation:Lead; Methodology:Equal; Writing – original draft:Lead; Writing – review & editing:Equal

J.R. Data curation:Supporting; Formal analysis:Supporting; Investigation:Supporting; Methodology:Supporting; Validation:Supporting; Writing – review & editing:Supporting

R.M. Data curation:Supporting; Formal analysis:Supporting; Investigation:Supporting; Methodology:Supporting; Writing – review & editing:Supporting

J.B. Conceptualization:Equal; Data curation:Supporting; Formal analysis:Supporting; Funding acquisition:Lead; Investigation:Equal; Methodology:Equal; Project administration:Lead; Resources:Equal; Software:Equal; Supervision:Equal; Validation:Supporting; Visualization:Supporting; Writing – original draft:Supporting; Writing – review & editing:Equal

D.G. Conceptualization:Supporting; Data curation:Supporting; Formal analysis:Supporting; Investigation:Supporting; Methodology:Supporting; Resources:Supporting; Supervision:Equal; Validation:Supporting; Writing – original draft:Supporting; Writing – review & editing:Supporting

M.B. Conceptualization:Equal; Data curation:Supporting; Formal analysis:Supporting; Investigation:Equal; Methodology:Supporting; Supervision:Equal; Writing – review & editing:Supporting

A.G. Conceptualization:Equal; Data curation:Equal; Formal analysis:Equal; Investigation:Equal; Methodology:Equal; Resources:Supporting; Supervision:Equal; Validation:Supporting; Visualization:Supporting; Writing – original draft:Supporting; Writing – review & editing:Equal

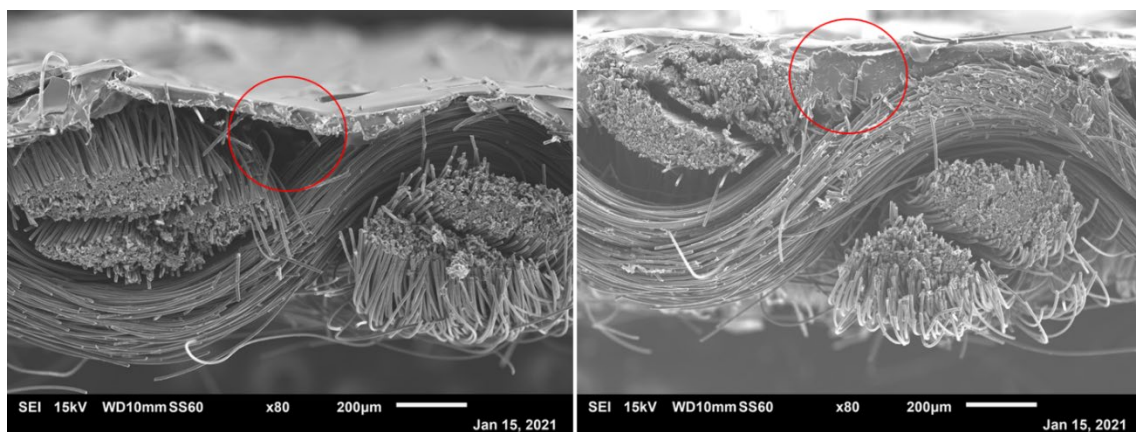


Figure S1. SEM images: a) cathode with GDL-1 and b) cathode with GDL-4.

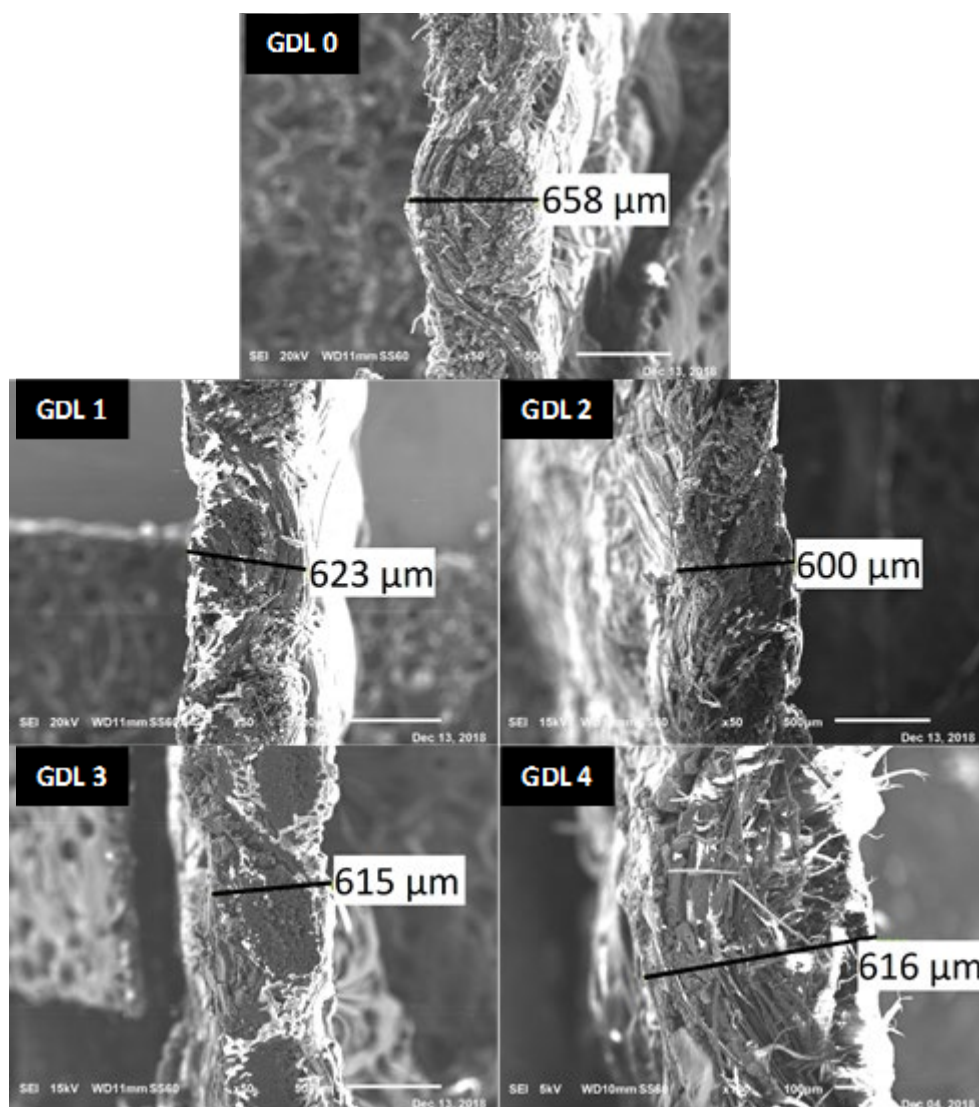


Figure S2. SEM images. Cathode thickness with different number of GDL.

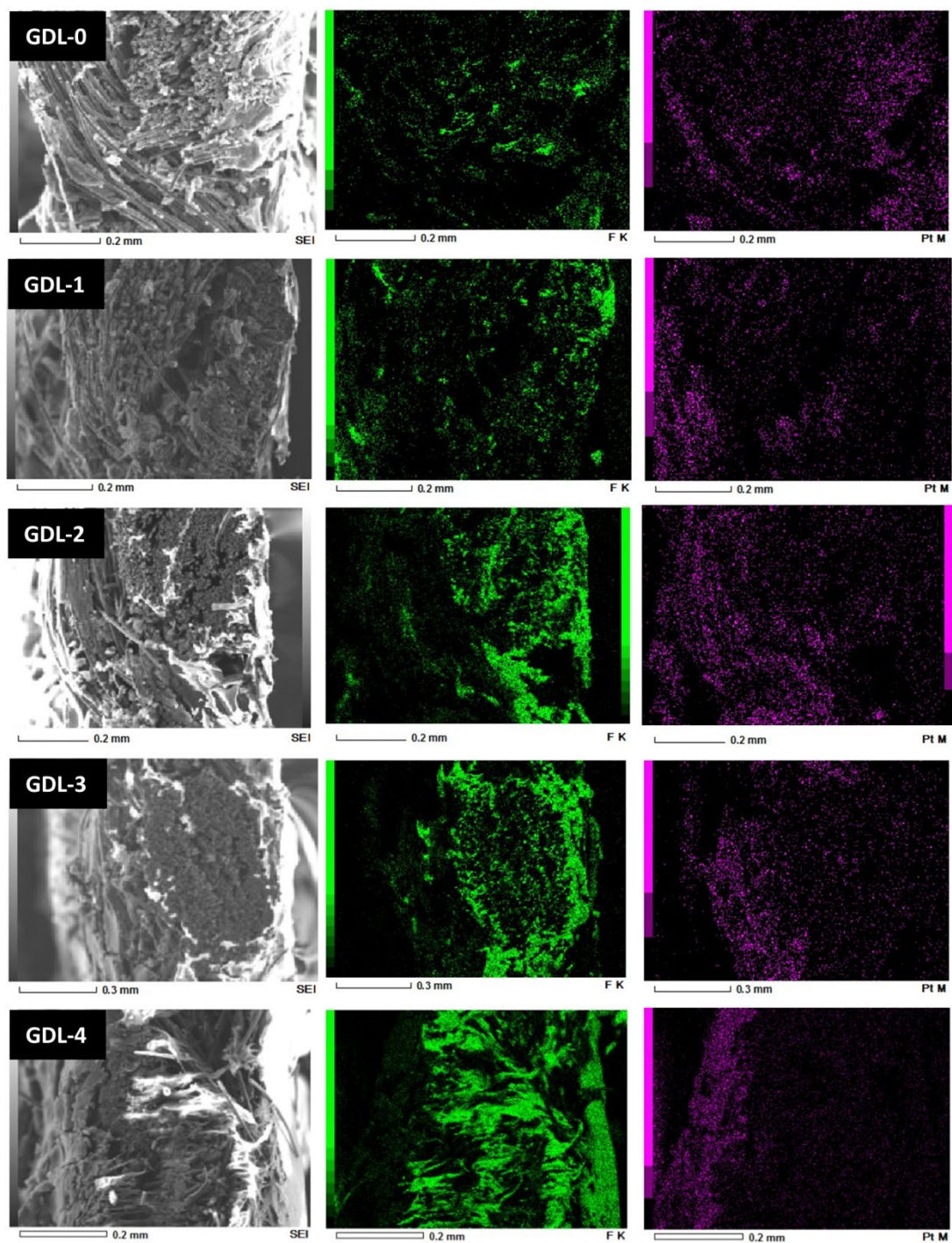


Figure S3. SEM Mapping of a cross-section cathode with a different number of GDL coating. The first column shows the cross-section, the second column shows the fluorine distribution and the third column shows the Pt distribution.