



OPEN ACCESS

Original research

Characterisation of the safety profile of evobrutinib in over 1000 patients from phase II clinical trials in multiple sclerosis, rheumatoid arthritis and systemic lupus erythematosus: an integrated safety analysis

Xavier Montalban,¹ Daniel Wallace,² Mark C Genovese,³ Davorka Tomic,⁴ Dana Parsons-Rich,^{5,6} Claire Le Bolay,⁷ Amy H Kao,⁸ Hans Guehring⁹

► Additional supplemental material is published online only. To view, please visit the journal online (<http://dx.doi.org/10.1136/jnnp-2022-328799>).

For numbered affiliations see end of article.

Correspondence to

Dr Xavier Montalban, Vall d'Hebron University Hospital, Passeig de la Vall d'Hebron, 119-129, 08035 Barcelona, Spain; xavier.montalban@cem-cat.org

Received 5 January 2022

Accepted 11 August 2022

ABSTRACT

Objective Analyse the integrated safety profile of evobrutinib, a Bruton's tyrosine kinase inhibitor (BTKi), using pooled data from multiple sclerosis (MS), rheumatoid arthritis (RA) and systemic lupus erythematosus (SLE) trials.

Methods Phase II, randomised, double-blind, placebo-controlled trial data were analysed (N=1083; MS: n=213, 48 weeks (W); RA: n=390, 12W; SLE: n=480, 52W). The analysis included all patients who received ≥1 dose of evobrutinib (25 mg or 75 mg once daily, or 50 mg or 75 mg twice daily) or placebo. Descriptive statistics and exposure-adjusted incidence rates (EAIR) were used to report treatment-emergent adverse events (TEAEs).

Results Data from 1083 patients were pooled: evobrutinib, n=861; placebo, n=271 (sum >1083 due to MS trial design: n=49 received both placebo (W0–24) and evobrutinib 25 mg (W25–48)); median follow-up time (pt-years): evobrutinib, 0.501; placebo, 0.463. Across indications, the proportion of patients with TEAEs and the EAIR were similar for evobrutinib and placebo (66.2% (247.6 events/100 pt-years) vs 62.4% (261.4 events/100 pt-years)). By indication, the EAIR (events/100 pt-years) of TEAEs for evobrutinib versus placebo were: MS: 119.7 vs 148.3; RA: 331.8 vs 306.8; SLE: 343.0 vs 302.1. Two fatal events occurred (in SLE). The serious infections EAIR was 2.7 and 2.1 events/100 pt-years for evobrutinib and placebo. For previously reported BTKi-class effects, the EAIR of transient elevated alanine aminotransferase/aspartate aminotransferase TEAEs (events/100 pt-years) with evobrutinib versus placebo was 4.8 vs 2.8/3.5 vs 0.7, respectively. IgG levels were similar in evobrutinib/placebo-treated patients.

Conclusions This is the first BTKi-integrated safety analysis that includes patients with MS. Overall, evobrutinib treatment (all doses) was generally well tolerated across indications.

Trial registration numbers NCT02975349, NCT03233230, NCT02975336.

INTRODUCTION

Bruton's tyrosine kinase (BTK), a member of the Tec family of non-receptor tyrosine kinases, is expressed in B cells, macrophages and microglia, and is involved in signal propagation and

WHAT IS ALREADY KNOWN ON THIS TOPIC

⇒ Evobrutinib is an orally administered, central nervous system-penetrating, highly selective, covalent Bruton's tyrosine kinase (BTK) inhibitor, currently in phase III for multiple sclerosis (MS) and has also been investigated in patients with rheumatoid arthritis (RA) and systemic lupus erythematosus (SLE) up to phase II. In the three phase II trials (one for each indication), evobrutinib was well tolerated with no dose effect on the incidence of adverse events.

WHAT THIS STUDY ADDS

⇒ The results from this integrated phase II safety analysis demonstrate that evobrutinib treatment (all doses) was generally well tolerated across indications. This analysis was based on the extensive evobrutinib safety database of over 1000 patients enrolled in the phase II trials and represents the only integrated safety analysis of a BTK inhibitor that includes patients with MS.

HOW THIS STUDY MIGHT AFFECT RESEARCH, PRACTICE AND/OR POLICY

⇒ This integrated safety analysis adds confidence in the safety profile of evobrutinib—being generally well tolerated in patients with MS, RA and SLE—and supports the continued development of evobrutinib for MS in the ongoing phase III trial.

modulation of signal responsiveness in these cells.^{1–3} Overexpression of BTK has been shown to be associated with certain autoimmune diseases due to an increase in autoreactive B cells and autoantibodies.³ This is exemplified in the multiple sclerosis (MS) setting where elevated BTK levels have been detected in B cells of relapsing-remitting MS and secondary-progressive MS patients as well as in microglia within progressive MS lesions.^{4,5} Therefore, BTK represents a rational therapeutic target in autoimmune diseases and, as a result, several BTK inhibitors are being investigated in autoimmune conditions including MS, rheumatoid arthritis (RA) and/or systemic lupus erythematosus (SLE).^{6,7} BTK



© Author(s) (or their employer(s)) 2022. Re-use permitted under CC BY-NC. No commercial re-use. See rights and permissions. Published by BMJ.

To cite: Montalban X, Wallace D, Genovese MC, et al. *J Neurol Neurosurg Psychiatry* Epub ahead of print: [please include Day Month Year]. doi:10.1136/jnnp-2022-328799

Table 1 Overview of trials included in the integrated evobrutinib safety analyses

Trial identifier	Phase	Indication	Patients randomised, n	Treatment	Duration, weeks	Eligibility	Reference
NCT02975349	II	MS	267	Placebo (Week 0–24) + evobrutinib 25 mg QD (Week 25–48) (n=54) Evobrutinib 25 mg QD (n=52) Evobrutinib 75 mg QD (n=53) Evobrutinib 75 mg BID (n=54) Dimethyl fumarate (n=54, open-label reference arm; patients in this treatment arm were not included in the integrated safety analysis)	48	<ul style="list-style-type: none"> Adults 18–65 years Relapsing–remitting or secondary progressive MS with superimposed relapses EDSS score ≤6 	Montalban <i>et al</i> ²³
NCT03233230	IIb	RA	390	Placebo (n=97) Evobrutinib 25 mg QD (n=98) Evobrutinib 75 mg QD (n=96) Evobrutinib 50 mg BID (n=99)	12	<ul style="list-style-type: none"> Adults 18–75 years Confirmed diagnosis of RA ≥6 months duration prior to screening Active moderate to severe RA at screening and randomisation (≥6 swollen joints and ≥6 tender joints) An hsCRP ≥5.0 mg/L (≥0.50 mg/dL) from two samples collected during screening Patients had received methotrexate treatment 7.5–25 mg/week for ≥16 weeks at stable dose for ≥8 weeks 	Peterfy <i>et al</i> ²⁵
NCT02975336	II	SLE	469*	Placebo (n=117) Evobrutinib 25 mg QD (n=118) Evobrutinib 75 mg QD (n=117) Evobrutinib 50 mg BID (n=117)	52	<ul style="list-style-type: none"> Adults 18–75 years Diagnosed with SLE by either the SLICC criteria, or at least four of the ACR criteria ≥6 months prior to screening At screening, patients must have a SLEDAI-2K score ≥6, including a SLEDAI-2K clinical score ≥4, and be auto-antibody positive (a positive test result for anti-double-stranded DNA antibody and/or antinuclear antibody (human epithelial cell-2 antinuclear antibody ≥1:80) and/or anti-Smith antibody) Vaccination against <i>Streptococcus pneumoniae</i> and influenza was required, as per local guidelines 	Wallace <i>et al</i> ²⁶

*The primary analysis from the SLE trial was conducted before all patients had completed the trial. Therefore, the integrated analysis reports the safety analysis set that included all patients (n=480).
ACR, American College of Rheumatology; BID, twice daily; EDSS, Expanded Disability Status Scale; hsCRP, high-sensitivity C-reactive protein; MS, multiple sclerosis; QD, once daily; RA, rheumatoid arthritis; SLE, systemic lupus erythematosus; SLEDAI-2K, Systemic Lupus Erythematosus Disease Activity Index-2000; SLICC, Systemic Lupus International Collaborating Clinics.

inhibitors impact B cell function via inhibition of BTK signalling rather than depleting the B cell population as per the effect of anti-CD20 therapies currently used for the treatment of MS, RA and SLE, which have been associated with hypogammaglobulinemia and increased risks of infections.^{3 8–11} Additionally, BTK inhibitors target innate immune cells involved in the pathogenesis of MS, including macrophages, microglia and astrocytes.⁷ Published evidence suggests that as central nervous system (CNS) resident cells, microglia and astrocytes may play a critical role in neurodegeneration and disease progression.^{12–15}

Evobrutinib is an orally administered, CNS-penetrating, highly selective, covalent BTK inhibitor, with a low potential for off-target-related adverse effects.^{16–18} The covalent binding of evobrutinib to BTK results in continued target inhibition even after it has been cleared from the circulation (geometric mean half-life ~2 hours), but due to the continuous turnover of

endogenous BTK protein, this inhibition is reversible following drug withdrawal.^{19 20} In preclinical studies, evobrutinib has been demonstrated to decrease the activation, proliferation and cytokine release of B cells, as well as inhibit proinflammatory macrophage differentiation.^{21 22} In the clinical setting, evobrutinib has been investigated in patients with MS, RA and SLE in three phase II trials.^{23–26} In the double-blind, randomised controlled trial in patients with relapsing MS, evobrutinib met its efficacy endpoints and no clinically relevant changes in immunoglobulin (Ig) or immune cell levels were observed.^{23 24} The RA and SLE trials did not meet their primary endpoints.^{25 26} In all three phase II trials, evobrutinib was well tolerated with no dose effect on the incidence of adverse events. The open-label extension (OLE) period from the MS trial is currently ongoing, but initial data have demonstrated that the safety of evobrutinib was maintained for over 2 years.^{27 28} The clinical development of

Table 2 Patient disposition and baseline characteristics

	MS		RA		SLE	
	Placebo (n=54)	Evobrutinib (n=208)	Placebo (n=97)	Evobrutinib (n=293)	Placebo (n=120)	Evobrutinib (n=360)
Age (years)	41.5 (±10.7)	42.2 (±10.5)	52.9 (±12.1)	52.6 (±12.3)	40.2 (±12.4)	40.7 (±12.3)
Age group, n (%)						
≤55 years	48 (88.9)	183 (88.0)	54 (55.7)	160 (54.6)	108 (90.0)	315 (87.5)
≥55 years	6 (11.1)	25 (12.0)	43 (44.3)	133 (45.4)	12 (10.0)	45 (12.5)
Gender, n (%)						
Female	40 (74.1)	144 (69.2)	77 (79.4)	235 (80.2)	112 (93.3)	339 (94.2)
Male	14 (25.9)	64 (30.8)	20 (20.6)	58 (19.8)	8 (6.7)	21 (5.8)
Race, n (%)						
White	54 (100.0)	208 (100.0)	92 (94.8)	282 (96.2)	66 (55.0)	224 (62.2)
Black	0 (0.0)	0 (0.0)	1 (1.0)	2 (0.7)	10 (8.3)	35 (9.7)
Asian	0 (0.0)	0 (0.0)	1 (1.0)	2 (0.7)	26 (21.7)	59 (16.4)
Other	0 (0.0)	0 (0.0)	3 (3.1)	7 (2.4)	18 (15.0)	42 (11.7)
Duration of disease (years)	7.0 (±6.4)	7.6 (±6.3)	6.1 (±6.4)	7.0 (±6.6)	6.3 (±6.2)	6.6 (±6.2)
Weight (kg)	69.5 (±13.6)	70.6 (±15.1)	74.5 (±19.7)	75.0 (±16.7)	67.5 (±18.4)	69.3 (±18.9)

Data are mean (±SD), unless stated otherwise.
MS, multiple sclerosis; RA, rheumatoid arthritis; SLE, systemic lupus erythematosus.

Table 3 Overall TEAEs

	MS						RA						SLE						Total			
	Placebo (n=54)		Evobrutinib (n=208)		EAIR		Placebo (n=97)		Evobrutinib (n=293)		EAIR		Placebo (n=120)		Evobrutinib (n=360)		EAIR		Placebo (n=271)		Evobrutinib (n=861)	
	n (%)	EAIR	n (%)	EAIR	n (%)	EAIR	n (%)	EAIR	n (%)	EAIR	n (%)	EAIR	n (%)	EAIR	n (%)	EAIR	n (%)	EAIR	n (%)	n (%)	n (%)	
Any TEAE	26 (48.1)	148.3	115 (55.3)	119.7	44 (45.4)	306.8	146 (49.8)	331.8	99 (82.5)	302.1	343.0	309 (85.8)	343.0	169 (62.4)	261.4	570 (66.2)	247.6					
Any Grade ≥3 TEAE	5 (9.3)	20.9	16 (7.7)	10.6	2 (2.1)	9.7	8 (2.7)	12.3	25 (20.8)	27.3	28.6	78 (21.7)	28.6	32 (11.8)	23.5	102 (11.8)	20.9					
Any treatment-related Grade ≥3 TEAE	2 (3.7)	8.3	10 (4.8)	6.6	1 (1.0)	4.9	3 (1.0)	4.6	10 (8.3)	10.2	11.4	33 (9.2)	11.4	13 (4.8)	9.1	46 (5.3)	9.1					
Any Grade ≥4 TEAE	1 (1.9)	4.2	1 (0.5)	0.7	0 (0.0)	–	1 (0.3)	1.5	1 (0.8)	1.0	1.7	5 (1.4)	1.7	2 (0.7)	1.4	7 (0.8)	1.3					
Any treatment-related Grade ≥4 TEAE	0 (0.0)	–	0 (0.0)	–	0 (0.0)	–	0 (0.0)	–	0 (0.0)	–	0 (0.0)	–	0 (0.0)	–	–	3 (0.3)	0.6					
Any serious TEAE	2 (3.7)	8.4	8 (3.8)	5.3	2 (2.1)	9.7	5 (1.7)	7.7	10 (8.3)	10.1	12.1	35 (9.7)	12.1	14 (5.2)	9.8	48 (5.6)	9.5					
TEAEs leading to treatment withdrawal	5 (9.3)	20.8	17 (8.2)	11.1	6 (6.2)	28.9	11 (3.8)	16.8	15 (12.5)	15.1	15.7	47 (13.1)	15.7	26 (9.6)	18.0	75 (8.7)	14.5					
Any TEAE leading to death	0 (0.0)	–	0 (0.0)	–	0 (0.0)	–	0 (0.0)	–	0 (0.0)	–	0.7	2 (0.6)*	0.7	0 (0.0)	–	2 (0.2)*	0.4					

EAIR presented as events/100 patient-years.

*Both patients were in the high disease activity subpopulation. One patient was in the evobrutinib 25 mg QD group. Fatal TEAEs of acute kidney injury, hepatitis and pancreatitis were reported, none of which were considered to be related to evobrutinib. The other patient was in the evobrutinib 75 mg QD group and died from infection-related complications due to bone marrow failure with a history of and concomitant leflunomide treatment. This fatal event was considered to be treatment related by the Investigator.

EAIR, exposure-adjusted incidence rates; MS, multiple sclerosis; QD, once daily; RA, rheumatoid arthritis; SLE, systemic lupus erythematosus; TEAEs, treatment-emergent adverse events.

evobrutinib in relapsing MS is ongoing, with two phase III trials that have recently completed enrollment (evolutionRMS 1 and 2; NCT04338022 and NCT04338061).²⁹

We analysed the integrated safety profile of evobrutinib using pooled data from the three phase II trials in MS, RA and SLE, to further characterise the overall safety profile of evobrutinib in autoimmune indications. This is the first BTK inhibitor integrated safety analysis that includes patients with MS.

METHODS

Trials included in the analysis

Data from three phase II, randomised, double-blind, placebo-controlled trials of evobrutinib in MS, RA or SLE were analysed. All three trials have been described previously and are summarised in table 1.^{23 25 26} The trials are registered with ClinicalTrials.gov and were conducted in accordance with the Declaration of Helsinki and the International Conference on Harmonisation Good Clinical Practice Guidelines.

Endpoints

Safety endpoints for all trials included the assessment of the nature, severity and occurrence of treatment-emergent adverse events (TEAEs) as well as vital signs, electrocardiograms and clinical laboratory safety parameters. Ig and CD19⁺ B cell levels were assessed in each trial.

Statistical analyses

The analysis included all patients who received ≥1 dose of evobrutinib or placebo. TEAEs were summarised by treatment group, severity (using NCI-CTCAE V4.03 criteria) and relationship to evobrutinib. Descriptive statistics and exposure-adjusted incidence rates (EAIR) were used to report TEAEs. EAIR in each treatment arm was defined as the ratio of the number of patients with an event to the sum of the duration of exposure to treatment of the patients up to the time of the first event or the end of observation (whichever occurred first) and was expressed as the rate per 100 patient-years (pt-years). Overall, results are reported (as appropriate) as evobrutinib (pooled doses) versus placebo across indications (integrated analysis) and by individual indication. The data cut-offs for each trial were: MS, 13 July 2018; RA, 25 October 2019; SLE, 21 August 2020.

Changes in IgG, A and M levels and CD19⁺ B cell levels were summarised across each treatment group by individual indication from baseline to Week 48 (MS), Week 12 (RA) and Week 52 (SLE) after randomisation.

In the MS trial, the placebo group switched to evobrutinib 25 mg once daily (QD) at 24 weeks. Therefore, data from Weeks 0–24 are included for the placebo analysis group (n=54) and data from Weeks 25–48 for the evobrutinib analysis group (n=49).

RESULTS

Patient disposition and demographics

Overall, data from the three trials (MS: n=213; RA: n=390; SLE: n=480) were pooled and included 1083 patients. Of these, 861 patients were treated with evobrutinib and 271 patients with placebo (note: the sum of the groups is >1083 due to the MS trial design, whereby 49 patients in the MS trial are included in the placebo group for Weeks 0–24 and the evobrutinib group for Weeks 25–48; see Methods section for additional details). Treatment exposure was 145.1, 185.5, 168.3, 120.2 and 44.9 pt-years for placebo, evobrutinib 25 mg QD, 75 mg QD, 50 mg

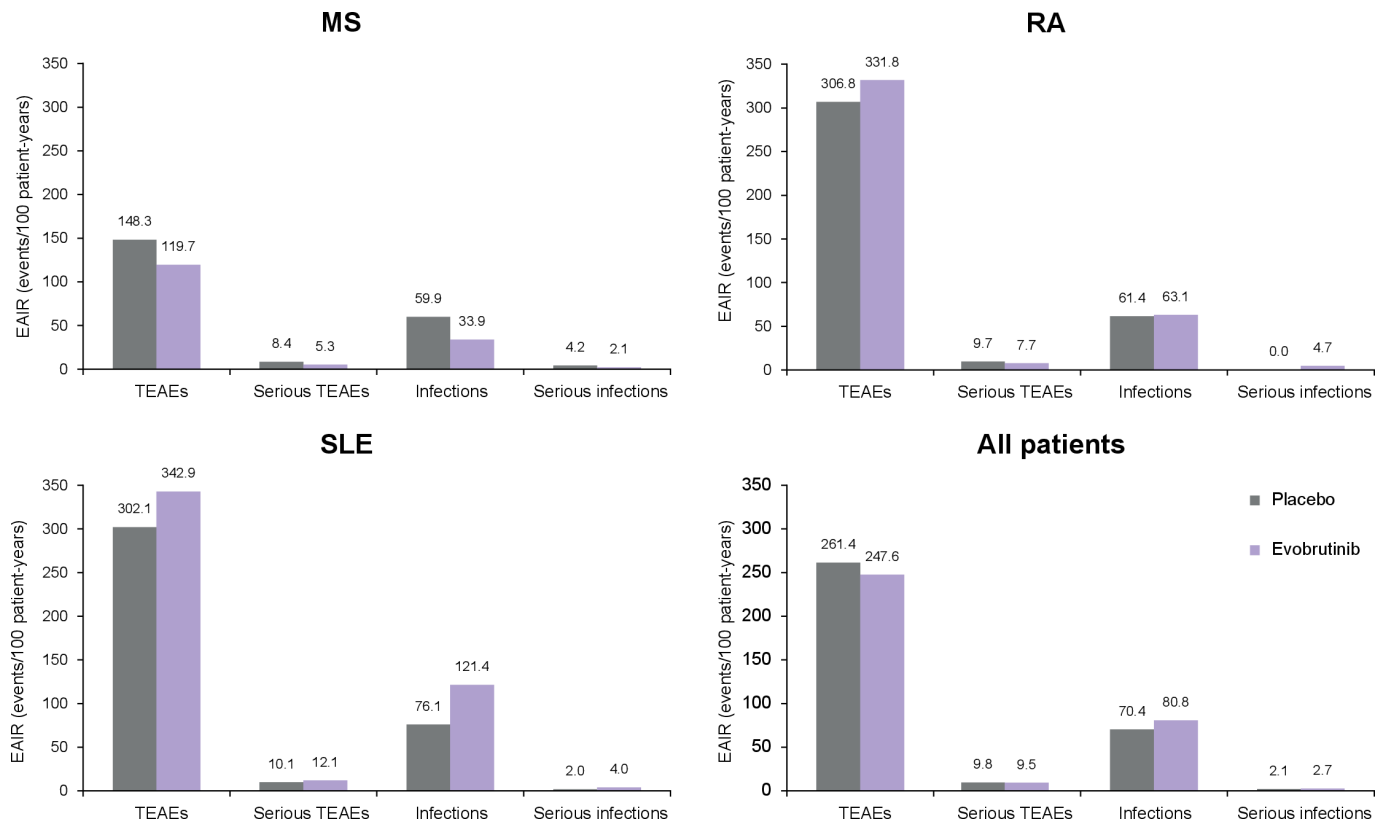


Figure 1 EAIRs of TEAEs, serious TEAEs and infections among evobrutinib-treated and placebo-treated patients in MS, RA, SLE and across indications. EAIR, exposure-adjusted incidence rates; MS, multiple sclerosis; RA, rheumatoid arthritis; SLE, systemic lupus erythematosus; TEAEs, treatment-emergent adverse events.

twice daily (BID) and 75 mg BID, respectively (median follow-up time (pt-years): evobrutinib, 0.501; placebo, 0.463).

The demographics and baseline characteristics were balanced between evobrutinib and placebo within the same indication (table 2). Per RA and SLE trial designs, concomitant immunosuppressants/immunomodulators (RA: methotrexate; SLE: azathioprine, 6-mercaptopurine, mycophenolate, methotrexate, sulfasalazine and leflunomide), non-steroidal anti-inflammatory drugs and corticosteroids were permitted. Given the different background therapies for these three disease areas, anticipated differences between indications were observed for immunosuppressants/immunomodulators and corticosteroids at baseline (online supplemental eTable 1). As expected, a greater proportion of patients in the SLE trial used analgesics, immunosuppressants/immunomodulators and corticosteroids at baseline compared with the MS and RA trials. Within each trial, the proportions of patients using analgesics, immunosuppressants/immunomodulators and corticosteroids were similar for those patients treated with placebo and those treated with evobrutinib.

Overall TEAEs

Overall, the proportion of patients with TEAEs and the rate of events were similar for evobrutinib and placebo by indication and across trials (table 3 and figure 1). A total of 570/861 (66.2%) and 169/271 (62.4%) patients treated with evobrutinib or placebo had a TEAE, respectively. The EAIR of TEAEs was 247.6 events/100 pt-years for evobrutinib versus 261.4 events/100 pt-years for placebo. The majority of these TEAEs were mild or moderate. In the MS and RA trials, there were no fatal TEAEs in either treatment group. Two TEAEs in the

evobrutinib treatment group from the SLE trial were fatal. One of these events was considered to be treatment related by the investigator (additional details in table 3). By indication, the EAIR of TEAEs for evobrutinib versus placebo were: MS: 119.7 vs 148.3; RA: 331.8 vs 306.8; SLE: 343.0 vs 302.1 events/100 pt-years. The majority of these TEAEs occurred in patients with SLE.

The most common TEAEs reported by evobrutinib-treated patients were urinary tract infections (9.5% vs 8.5% placebo), headache (9.2% vs 10.3% placebo), nasopharyngitis (7.3% vs 5.5% placebo), diarrhoea (6.2% vs 4.8% placebo) and alanine aminotransferase (ALT) increase (5.0% vs 3.0% placebo).

Serious TEAEs were reported by 48 patients (5.6%; EAIR 9.5 events/100 pt-years) treated with evobrutinib and 14 patients (5.2%; EAIR 9.8 events/100 pt-years) treated with placebo (table 3 and figure 1). The most frequent serious TEAEs in the evobrutinib treatment group were related to infections and infestations, primarily occurring in patients with SLE (table 4 and online supplemental eTable 2).

Serious infections

Across trials, there was no imbalance in the EAIR of serious infections between evobrutinib doses (25 mg QD: 4.4; 75 mg QD: 2.4; 50 mg BID: 1.7; 75 mg BID: 0.0 events/100 pt-years) and no notable differences compared with placebo (2.1 events/100 pt-years). In the MS trial, no serious infections in any of the evobrutinib treatment arms were observed. By indication, there were no serious infections reported with the highest evobrutinib dose in the MS and RA trials, while the EAIR for the highest evobrutinib dose in the SLE trial was similar to placebo (50 mg BID: 2.1 vs 2.0 events/100 pt-years).

Table 4 EAIRs of BTK inhibitor or concomitant drug class-associated TEAEs by preferred term

	Total				Cont'd	Total			
	Placebo (n=271)		Evobrutinib (n=861)			Placebo (n=271)		Evobrutinib (n=861)	
	n (%)	EAIR	n (%)	EAIR		n (%)	EAIR	n (%)	EAIR
Cardiac disorders					Infections				
Tachycardia	0 (0.0)	–	1 (0.1)	0.2	Serious infections and infestations	3 (1.1)	2.1	14 (1.6)	2.7
Ventricular arrhythmia	0 (0.0)	–	1 (0.1)	0.2	Herpes zoster	3 (1.1)	2.1	9 (1.0)	1.8
Coronary artery disease	0 (0.0)	–	1 (0.1)	0.2	Immune system disorders				
Haemorrhage-related TEAEs					Hypersensitivity	1 (0.4)	0.7	3 (0.3)	0.6
Bleeding*	7 (2.6)	2.4	13 (1.5)	0.6	Musculoskeletal and connective tissue disorders				
Bruising†	1 (0.4)	0.7	5 (0.6)	0.5	Osteonecrosis	1 (0.4)	0.7	3 (0.3)	0.6
Vascular disorders					Liver-related TEAEs				
Hypertension	1 (0.4)	0.7	19 (2.2)	3.7	ALT increase‡	4 (1.5)	2.8	25 (2.9)	4.8
Neoplasms					AST increase‡	1 (0.4)	0.7	18 (2.1)	3.5
Neoplasms benign, malignant and unspecified (SOC)	5 (1.8)	3.5	7 (0.8)	1.4	Pancreas-related TEAEs				
Anogenital warts	1 (0.4)	0.7	2 (0.2)	0.4	Amylase increase	10 (3.7)	7.0	26 (3.0)	5.1
Fibrous histiocytoma	1 (0.4)	0.7	0 (0.0)	–	Lipase increase‡	4 (1.5)	2.8	17 (2.0)	4.0
Lipoma	1 (0.4)	0.7	0 (0.0)	–	Leucopenia-related TEAEs				
Lung neoplasm	1 (0.4)	0.7	0 (0.0)	–	Lymphopenia‡	10 (3.7)	7.2	16 (1.9)	3.1
Oral papilloma	0 (0.0)	–	1 (0.1)	0.2	Neutropenia‡	6 (2.2)	4.2	10 (1.2)	1.9
Papillary thyroid cancer	1 (0.4)	0.7	0 (0.0)	–	Thrombocytopenia-related TEAEs				
Skin papilloma	0 (0.0)	–	1 (0.1)	0.2	Thrombocytopenia‡	0 (0.0)	–	2 (0.2)	0.4
Thyroid adenoma	0 (0.0)	–	1 (0.1)	0.2					
Uterine leiomyoma	0 (0.0)	–	2 (0.2)	0.4					

*Defined by medical concept as epistaxis, haematoma, haematoma muscle, haemorrhagic diathesis.

†Defined by medical concept as ecchymosis and petechiae.

‡The event with the highest severity for a patient during the treatment period and meeting the AESI definition was included in the summary.

AESI, adverse event of special interest; EAIR, exposure-adjusted incidence rates; MS, multiple sclerosis; RA, rheumatoid arthritis; SLE, systemic lupus erythematosus; SOC, system organ class; TEAEs, treatment-emergent adverse events.

Liver-related TEAEs

A higher EAIR of ALT and aspartate aminotransferase (AST) elevations was observed with evobrutinib compared with placebo across trials (table 4). These events occurred at a higher EAIR in the MS and RA trials compared with the SLE trial (online supplemental eTable 2). However, these elevations in ALT and AST levels were typically asymptomatic and reversible on withdrawal of evobrutinib.

Other potential BTK inhibitor or concomitant drug class-associated TEAEs

Cardiovascular disorders were similar between evobrutinib and placebo (1.9 vs 2.1 events/100 pt-years) across trials with a slightly higher frequency occurring in the SLE trial compared with the MS and RA trials (table 4 and online supplemental eTable 2). An increased EAIR of bleeding-associated or bruising-associated events was not observed with evobrutinib across trials or within each indication compared with placebo. Across trials, increase in amylase levels occurred at a similar EAIR with evobrutinib and placebo, which was also reflected in the individual trials. The EAIR of increase in lipase levels was higher in the evobrutinib treatment arm versus placebo (4.0 vs 2.8 events/100 pt-years), due to a higher EAIR observed in the SLE trial (3.4 vs 2.0 events/100 pt-years). Neoplasms occurred at a lower EAIR with evobrutinib compared with placebo across trials and within the MS and SLE trials (no events were observed in the RA trial).

The EAIR of other TEAEs known to be associated with concomitant medications typically used by patients with RA and SLE, such as hypersensitivity, herpes zoster infection, osteonecrosis and diarrhoea, were similar between placebo and evobrutinib across trials (table 4 and online supplemental eTable 2). The EAIR of hypertension was higher in the evobrutinib treatment arm versus placebo (3.7 vs 0.7 events/100 pt-years), due to a

higher EAIR observed in the SLE trial (4.4 vs 0.0 events/100 pt-years).

Ig levels

For all trials, IgG and subtype levels were maintained, and no relevant changes were observed at the end of each trial (MS: Week 48; RA: Week 12; SLE: Week 52) relative to baseline for evobrutinib and placebo (figure 2). In the MS and SLE trials, IgA levels increased in both the placebo and evobrutinib treatment arms; however, in the RA trial, IgA levels were maintained. Across all three trials, IgM levels decreased in the evobrutinib treatment arms but remained comparable with baseline levels in the placebo treatment arm except in the MS trial; after Week 24, IgM levels decreased to similar levels as the evobrutinib treatment arms due to patients switching from placebo to evobrutinib 25 mg QD. Overall, IgA and IgM levels remained within normal ranges for both treatment groups across the three trials.

Immune cell levels

Total CD19⁺ B cells decreased in the MS and SLE trials and increased in the RA trial in the evobrutinib treatment groups compared with baseline; however, overall, these levels remained within the normal range (107–698 cells/ μ L; figure 3). For the SLE trial, an increase in B cells was initially observed with evobrutinib at week 4 (percent change from baseline at Week 4: 40–59%) before decreasing.

DISCUSSION

This is the first integrated analysis of evobrutinib safety data derived from phase II trials across MS, RA and SLE indications. Data from over 1000 patients treated with either evobrutinib or placebo contributed to this analysis. The majority of TEAEs were

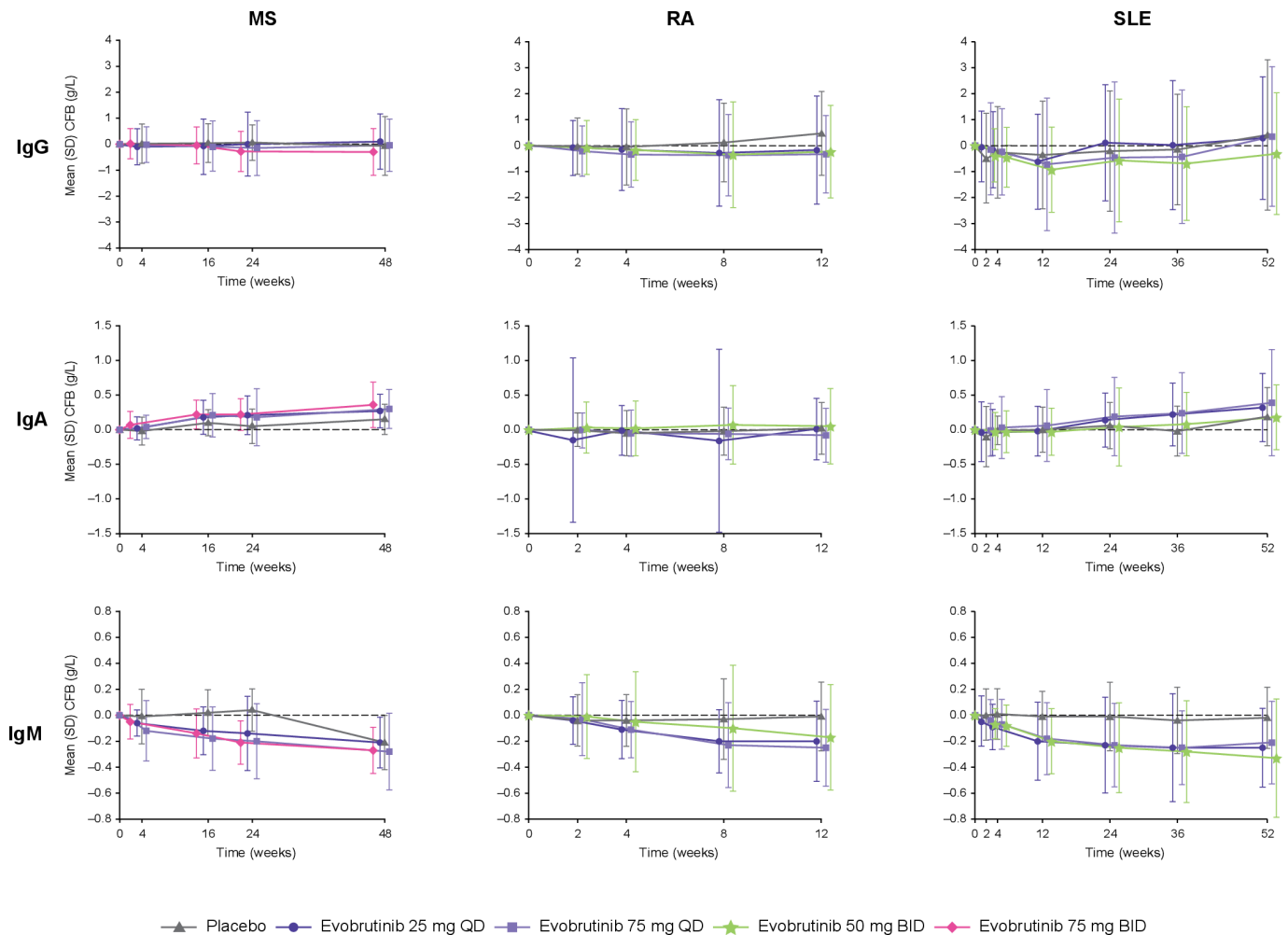


Figure 2 Ig levels change from baseline over time. Normal ranges (g/L): IgG: 7–16; IgA: 0.7–4.0; IgM: 0.4–2.3. BID, twice daily; CFB, change from baseline; Ig, immunoglobulin; MS, multiple sclerosis; QD, once daily; RA, rheumatoid arthritis; SLE, systemic lupus erythematosus.

mild or moderate. An enhanced risk of serious infections (despite background immunosuppressant therapy) was not observed with evobrutinib treatment. A higher rate of elevations in ALT and AST were observed with evobrutinib compared with placebo. These ALT and AST elevations were typically asymptomatic and reversible following drug discontinuation. Other drug class-associated TEAEs, such as bleeding/bruising events or neoplasms, were not observed to be differential between evobrutinib and placebo with the exception of hypertension and increased lipase. Overall, the evobrutinib safety profile was comparable with that of placebo across indications, with no apparent relationship to evobrutinib dose.

Current treatment options for MS, RA and SLE are associated with a positive–benefit risk ratio in terms of adverse outcomes. However, targeted therapies that have a safety profile conducive to long-term use as necessitated by the chronic nature of these diseases may be beneficial for patients. In the RA and SLE settings, long-term use of corticosteroids and immunosuppressants/immunomodulators is associated with infections, cardiovascular events, malignancies, renal disorders and damage to multiple organ systems.^{30–34} In MS, several, currently available B cell-targeting treatments are highly effective at reducing inflammation but are associated with some tolerability and safety concerns, notably an increased risk of infections and malignancies.^{35–39} In addition to the above, treatments used in MS, RA and SLE are also associated with liver-related adverse events.

The results from our analysis demonstrate that treatment with evobrutinib for up to a year is not associated with an increased risk of adverse events common to current therapies used in the treatment of MS, RA and SLE, except for an association with elevated levels of ALT and AST, which was in line with the observations from the individual MS, RA and SLE trials.^{23 25 26} However, as was observed in the MS and SLE trials, these elevations were typically transient and resolved following withdrawal of evobrutinib.^{23 26} In addition, in the MS trial, these elevations were observed only in the first 24 weeks of the trial.²³ Furthermore, results from the MS trial OLE have demonstrated that the evobrutinib safety profile in the double-blind period was maintained at 2 years with no new safety signals identified.^{27 28} These results are substantiated further by the latest data from over 2.5 years of OLE treatment, whereby 59/213 patients (27.7%) had a treatment-related TEAE; six serious TEAEs were deemed treatment related.⁴⁰ Severe/opportunistic infections (Grade ≥ 3) were reported by 9/213 patients (4.2%) of which three were fatal and not considered treatment related (COVID-19 pneumonia (n=2) and E. coli sepsis (n=1)). At OLE Week 120, most patients had IgG (91%), IgA (88%) and IgM (82%) levels within normal ranges. Overall mean CD19⁺ B cell levels were 0.218×10^6 cells/mL (OLE baseline) and 0.122×10^6 cells/mL (OLE Week 96). ALT and AST elevations were observed only in patients previously receiving dimethyl fumarate or evobrutinib 25 mg QD in the double-blind period and occurred within 12 weeks of

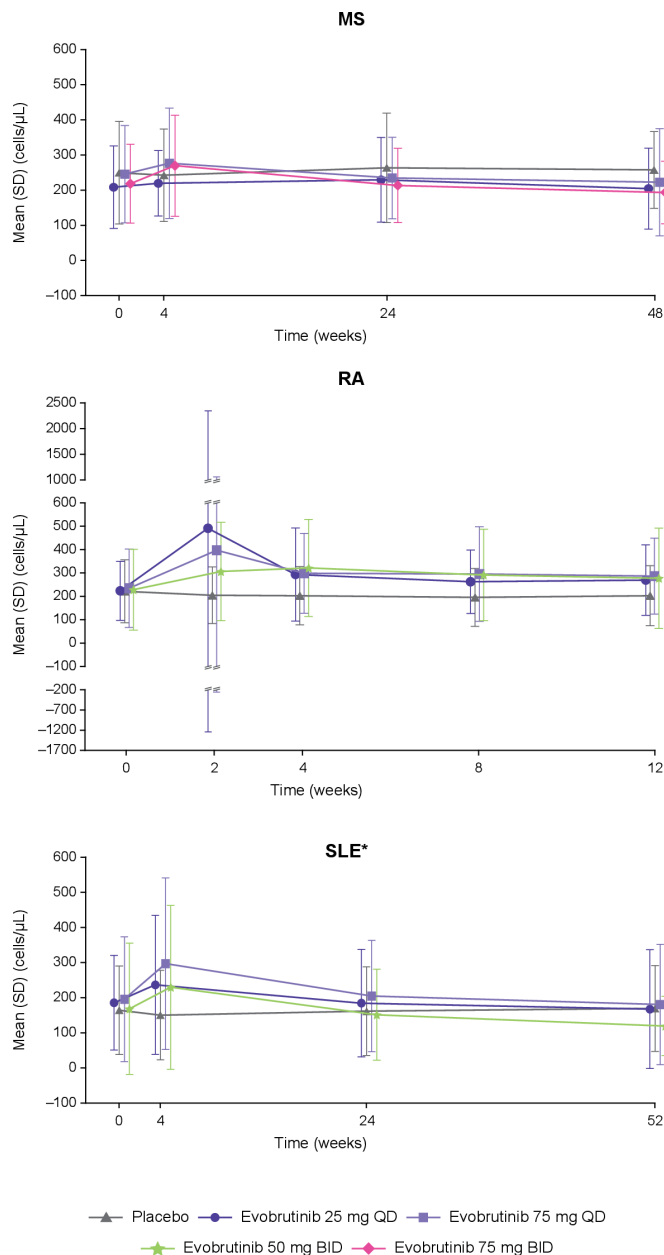


Figure 3 CD19⁺ B cells levels over time. Normal range: 107–698 cells/ μ L. *B cell levels for the SLE trial are total B cell levels; the other trials are CD19⁺ B cell levels. BID, twice daily; MS, multiple sclerosis; QD, once daily; RA, rheumatoid arthritis; SLE, systemic lupus erythematosus.

OLE initiation (ie, evobrutinib 75 mg QD). Amylase and lipase increases occurred in 6 (2.8%) and 24 (11.3%) patients, respectively, but without clinical signs and symptoms.⁴⁰ The above indication of the acceptable tolerability of evobrutinib with no new safety signals is likely due to both the BTK specificity of evobrutinib with minimal off-target kinase interactions as well as its mode of action that modulates B cell function by inhibiting BTK signalling rather than depleting the B cell population by cell lysis.^{3 17 41}

As a class, earlier forms of BTK inhibitors, namely, ibrutinib used in oncology, have been associated with an increased risk of bleeding, cardiovascular events, skin reactions, diarrhoea and infections.^{6 42} Evidence suggests that these events are likely due to the low selectivity of ibrutinib. Ibrutinib has been shown to inhibit 22/221 off-target kinases by $\geq 80\%$ compared

with evobrutinib that inhibits 2/221 off-target kinases to the same degree.⁴¹ Interaction with the off-target kinases Tec and members of the epidermal growth factor receptor family has been implicated in the adverse events associated with ibrutinib.⁶ The ibrutinib-associated adverse events were not identified as common events with evobrutinib suggesting that the improved selectivity of evobrutinib (a second-generation BTK inhibitor) has overcome these class-associated TEAEs.

Overall, mean Ig levels remained within normal ranges with evobrutinib treatment, and across trials, there was no imbalance in the rate of serious infections between evobrutinib doses. Unlike BTK inhibitors, use of anti-CD20 therapies results in a near-complete depletion of B cells, which carries a risk of hypogammaglobulinaemia. Hypogammaglobulinaemia is associated with an increased susceptibility to infections.^{8–11} While mild hypogammaglobulinaemia may be asymptomatic, more severe cases of hypogammaglobulinaemia usually result in recurrent infections. In MS, there are currently no data on Ig levels from other BTK inhibitors; however, treatment with fenebrutinib in RA and SLE reduced IgG levels from baseline by approximately 1 g/L and 2.25 g/L, respectively, but levels remained within the normal range.⁴³ Similarly, IgG levels in the evobrutinib RA and SLE trials also remained within the normal range (RA: -0.24 g/L; SLE: 0.11 g/L). However, it should be noted that studies have observed that the incidence of hypogammaglobulinaemia increases with longer treatment durations, with infrequent events observed in the first years of treatment with anti-CD20s.^{44–46} Therefore, continued monitoring of the ongoing extension phases from BTK inhibitor trials will provide further insights into the longer term effects of BTK inhibitors on Ig levels and the associated risk of infections.

A similar integrated safety analysis from another BTK inhibitor, fenebrutinib, has been conducted in RA, SLE and chronic spontaneous urticaria patients.⁴³ In terms of overall TEAEs, serious TEAEs, serious infections and aminotransferase elevations, similar proportions of patients experienced these events with fenebrutinib as was observed in the evobrutinib trials.

This analysis has some limitations. The different trial designs, trial durations and patient populations may have restricted the extent of the comparisons that could be made between trials. In addition, the short duration of the RA trial limited the number of TEAEs and malignancies reported by this patient group. Furthermore, the baseline concomitant medications were different for these trials, in particular, for MS versus the RA and SLE trials. The greater level of concomitant medications, including use of corticosteroids and immunosuppressants, required by RA and SLE patients may explain the higher EAIR of infections in these trials compared with the MS trial. Finally, the stopping rules for evobrutinib varied across the trials; however, the variation was relatively minimal and is not expected to have impacted the results considerably. However, this analysis benefits from having the largest BTK inhibitor patient data set across MS, RA and SLE indications to date with a long cumulative treatment exposure across indications. Furthermore, the patients with SLE were using a greater level of concomitant medications, including immunosuppressants, which may have subsequently contributed to the higher EAIR of infections.

CONCLUSION

These results represent the only integrated safety analysis of a BTK inhibitor that includes patients with MS. The analysis was based on the extensive evobrutinib safety database of over 1000 patients with a long cumulative treatment exposure from

three phase II trials across autoimmune indications. Overall, this analysis adds to our understanding of the safety profile of evobrutinib, confirms evobrutinib treatment was well tolerated in MS, RA and SLE, and supports the continued development of evobrutinib for MS and the ongoing phase III programme.

Author affiliations

¹Department of Neurology-Neuroimmunology, Centre d'Esclerosi Múltiple de Catalunya (Cemcat), Vall d'Hebron University Hospital, Barcelona, Spain

²Cedars-Sinai Medical Center, David Geffen School of Medicine, University of California, Los Angeles, California, USA

³Division of Immunology and Rheumatology, Stanford University, Palo Alto, California, USA

⁴Global Clinical Development, Ares Trading SA, Eysins, Switzerland, an affiliate of Merck KGaA

⁵Global Clinical Development, EMD Serono Research & Development Institute, Inc, Billerica, Massachusetts, USA, an affiliate of Merck KGaA (affiliation at the time the research was conducted)

⁶ECD-Early Clinical Development, Pfizer, Cambridge, Massachusetts, USA

⁷Biostatistics, Merck Healthcare KGaA, Darmstadt, Germany

⁸Translational Innovation Platform in Immunology & Neuroscience, EMD Serono Research & Development Institute, Inc, Billerica, Massachusetts, USA, an affiliate of Merck KGaA

⁹Global Patient Safety, Merck Healthcare KGaA, Darmstadt, Germany

Acknowledgements The authors would like to thank the patients, investigators, co-investigators and the trial teams at each of the participating centres; Emily Martin (EMD Serono Research & Development Institute, Inc., Billerica, MA, USA, an affiliate of Merck KGaA) and Daniela Sera and Karin Broeder (Merck Healthcare KGaA, Darmstadt, Germany) for providing assistance with the statistical analyses; and Francesca Hemingway of Bioscript Group Ltd., Macclesfield, UK for providing medical writing and editorial support (funded by Merck).

Contributors All authors confirm that they meet the International Committee of Medical Journal Editors uniform requirements for authorship. All authors contributed to drafting/critically revising the article, approval of the final manuscript and sharing in the final responsibility for the content of the manuscript and the decision to submit it for publication. XM acts as guarantor and accepts full responsibility for the finished work, had full access to the data in the trial, and made the final decision to submit the manuscript for publication.

Funding The trial was sponsored by Merck Healthcare KGaA (CrossRef Funder ID: 10.13039/100009945).

Competing interests XM has received speaking honoraria and/or travel expenses for participation in scientific meetings, and/or has been a steering committee member of clinical trials and/or participated in advisory boards of clinical trials in the past years with Actelion, Alexion, Biogen, Bristol-Myers Squibb/Celgene, EMD Serono Research & Development Institute, Inc., Billerica, MA, USA, an affiliate of Merck KGaA, Excemed, Genzyme, Hoffmann-La Roche, Immunic, Janssen Pharmaceuticals, Medday, Merck Healthcare KGaA, MSIF, Mylan, Nervgen, NMSS, Novartis, Sandoz, Sanofi-Genzyme, Teva Pharmaceutical and TG Therapeutics. DW has received consultant fees from Amgen, Eli Lilly, EMD Serono Research & Development Institute, Inc., Billerica, MA, USA (an affiliate of Merck KGaA), Merck, Celgene and Janssen. MCG has received personal compensation from AbbVie, Astellas, EMD Serono Research & Development Institute, Inc., Billerica, MA, USA, an affiliate of Merck KGaA, Galapagos, Genentech/Roche, Gilead, Incyte, Eli Lilly, Pfizer, Sanofi and Vertex. DT is an employee of Ares Trading SA, Eysins, Switzerland, an affiliate of Merck KGaA, and received stock or an ownership interest from Novartis. DP-R was an employee of EMD Serono Research & Development Institute, Inc., Billerica, MA, USA, an affiliate of Merck KGaA at the time of the study, and is currently an employee of and has received stock from Pfizer. CLB and HG are employees of Merck Healthcare KGaA, Darmstadt, Germany. AHK is an employee of and received stock or an ownership interest from EMD Serono Research & Development Institute, Inc., Billerica, MA, USA, an affiliate of Merck KGaA.

Patient consent for publication Not applicable.

Ethics approval This trial involves human participants and was approved by Lead IRB for each trial included in our integrated safety analysis: Study code: MS200527-0086. Lead IRB details: Parc de Salut MAR DREC, Dr. Aiguader, 88 08003, Barcelona, Spain, ceic-psmar@imim.es, www.parcdesalutmar.cat. Study code: MS200527-0060. Lead IRB details: Stanford Institutional Review Board, 3000 El Camino Real, Five Palo Alto Square, 4th Floor, Palo Alto, CA, USA 94306. Study code: MS200527-0018. Lead IRB details: Copernicus Group IRB, One Triangle Drive, Suite 100, Durham, NC, USA 27713. Participants gave informed consent to participate in the trial before taking part.

Provenance and peer review Not commissioned; externally peer reviewed.

Data availability statement Data are available upon reasonable request. Any requests for data by qualified scientific and medical researchers for legitimate research purposes will be subject to Merck's Data Sharing Policy. All requests should be submitted in writing to Merck's data sharing portal <https://www.merckgroup.com/en/research/our-approach-to-research-and-development/healthcare/clinical-trials/commitment-responsible-data-sharing.html>. When Merck has a co-research, co-development, or co-marketing or co-promotion agreement, or when the product has been out-licensed, the responsibility for disclosure might be dependent on the agreement between parties. Under these circumstances, Merck will endeavour to gain agreement to share data in response to requests.

Supplemental material This content has been supplied by the author(s). It has not been vetted by BMJ Publishing Group Limited (BMJ) and may not have been peer-reviewed. Any opinions or recommendations discussed are solely those of the author(s) and are not endorsed by BMJ. BMJ disclaims all liability and responsibility arising from any reliance placed on the content. Where the content includes any translated material, BMJ does not warrant the accuracy and reliability of the translations (including but not limited to local regulations, clinical guidelines, terminology, drug names and drug dosages), and is not responsible for any error and/or omissions arising from translation and adaptation or otherwise.

Open access This is an open access article distributed in accordance with the Creative Commons Attribution Non Commercial (CC BY-NC 4.0) license, which permits others to distribute, remix, adapt, build upon this work non-commercially, and license their derivative works on different terms, provided the original work is properly cited, appropriate credit is given, any changes made indicated, and the use is non-commercial. See: <http://creativecommons.org/licenses/by-nc/4.0/>.

REFERENCES

- López-Herrera G, Vargas-Hernández A, González-Serrano ME, *et al*. Bruton's tyrosine kinase--an integral protein of B cell development that also has an essential role in the innate immune system. *J Leukoc Biol* 2014;95:243–50.
- Bender AT, Gardberg A, Pereira A, *et al*. Ability of Bruton's tyrosine kinase inhibitors to sequester Y551 and prevent phosphorylation determines potency for inhibition of Fc receptor but not B-cell receptor signaling. *Mol Pharmacol* 2017;91:208–19.
- Crofford LJ, Nyhoff LE, Sheehan JH, *et al*. The role of Bruton's tyrosine kinase in autoimmunity and implications for therapy. *Expert Rev Clin Immunol* 2016;12:763–73.
- Rijvers L, Melief M, Van Langelaar J. T-bet B cell development in MS: Association with Bruton's tyrosine kinase activity and targeting by evobrutinib [abstract]. *Mult Scler* 2020;26(Suppl. 3):312–3 (P0403).
- Gruber R, Dufault M, Chretien N. Decoding bruton's tyrosine kinase signalling in neuroinflammation [abstract]. *Mult Scler* 2020;26(Suppl. 3):270 (P0311).
- Estupiñán HY, Berglöf A, Zain R, *et al*. Comparative analysis of BTK inhibitors and mechanisms underlying adverse effects. *Front Cell Dev Biol* 2021;9:630942.
- Dolgin E. BTK blockers make headway in multiple sclerosis. *Nat Biotechnol* 2021;39:3–5.
- Tallantyre EC, Whittam DH, Jolles S, *et al*. Secondary antibody deficiency: a complication of anti-CD20 therapy for neuroinflammation. *J Neurol* 2018;265:1115–22.
- Derfuss T, Weber MS, Hughes R. Serum immunoglobulin levels and risk of serious infections in the pivotal phase III trials of ocrelizumab in multiple sclerosis and their open-label extensions [abstract]. *Mult Scler* 2019;25(Suppl. 2):20 (OP65).
- Zoehner G, Miclea A, Salmen A, *et al*. Reduced serum immunoglobulin G concentrations in multiple sclerosis: prevalence and association with disease-modifying therapy and disease course. *Ther Adv Neurol Disord* 2019;12:1756286419878340.
- Jalkh G, Abi Nahed R, Macaron G. Safety of newer disease modifying therapies in multiple sclerosis. *Vaccines (Basel)* 2020;9:12.
- Correale J, Farez MF. The role of astrocytes in multiple sclerosis progression. *Front Neurol* 2015;6:180.
- Peterson JW, Bö L, Mörk S, *et al*. Transected neurites, apoptotic neurons, and reduced inflammation in cortical multiple sclerosis lesions. *Ann Neurol* 2001;50:389–400.
- Trapp BD, Nave K-A. Multiple sclerosis: an immune or neurodegenerative disorder? *Annu Rev Neurosci* 2008;31:247–69.
- Mayo L, Quintana FJ, Weiner HL. The innate immune system in demyelinating disease. *Immunol Rev* 2012;248:170–87.
- Haselmayer P, Camps M, Liu-Bujalski L, *et al*. Efficacy and pharmacodynamic modeling of the BTK inhibitor evobrutinib in autoimmune disease models. *J Immunol* 2019;202:2888–906.
- Caldwell RD, Qiu H, Askew BC, *et al*. Discovery of evobrutinib: an oral, potent, and highly selective, covalent Bruton's tyrosine kinase (BTK) inhibitor for the treatment of immunological diseases. *J Med Chem* 2019;62:7643–55.
- Piasecka-Stryczynska K, Rejdak K, Dyroff M, *et al*. Concentration of evobrutinib, a BTK inhibitor, in cerebrospinal fluid during treatment of patients with relapsing multiple sclerosis in a phase 2 study [abstract]. *Mult Scler Relat Disord* 2021;51:103001.

- 19 Boschert U, Crandall T, Pereira A. T cell mediated experimental CNS autoimmunity induced by PLP in SJL mice is modulated by evobrutinib (M2951) a novel Bruton's tyrosine kinase inhibitor [abstract]. *Mult Scler* 2017;23(Suppl. 3):327 (P678).
- 20 Becker A, Martin EC, Mitchell DY, et al. Safety, tolerability, pharmacokinetics, target occupancy, and concentration-QT analysis of the novel BTK inhibitor evobrutinib in healthy volunteers. *Clin Transl Sci* 2020;13:325–36.
- 21 Torke S, Pretzsch R, Häusler D, et al. Inhibition of Bruton's tyrosine kinase interferes with pathogenic B-cell development in inflammatory CNS demyelinating disease. *Acta Neuropathol* 2020;140:535–48.
- 22 Alankus Y, Grenningloh R, Haselmayer P. BTK inhibition prevents inflammatory macrophage differentiation: a potential role in MS [abstract]. *Mult Scler* 2018;24(Suppl. 2):264 (P557).
- 23 Montalban X, Arnold DL, Weber MS, et al. Placebo-controlled trial of an oral BTK inhibitor in multiple sclerosis. *N Engl J Med* 2019;380:2406–17.
- 24 Montalban X, Shaw J, Syed S. Effect of evobrutinib, a Bruton's tyrosine kinase inhibitor, on immune cell and immunoglobulin levels over 48 weeks in a phase 2 study in relapsing multiple sclerosis [abstract]. *Mult Scler* 2019;25(Suppl. 2):748 (P1358).
- 25 Peterfy C, Buch MH, Choy E. A phase IIb, randomized, double-blind study in patients with rheumatoid arthritis evaluating the safety and efficacy of evobrutinib compared with placebo in patients with an inadequate response to methotrexate [abstract]. *Arthritis Rheumatol* 2020;72(Suppl. 10):RA2012.
- 26 Wallace DJ, Dorner T, Pisetsky D. Efficacy and safety of evobrutinib (M2951) in adult patients with systemic lupus erythematosus who received standard of care therapy: a phase II, randomized, double-blind, placebo-controlled dose ranging study [abstract]. *Arthritis Rheumatol* 2020;72(Suppl. 10):SLE0865.
- 27 Montalban X, Arnold DL, Weber MS. Safety of the Bruton's tyrosine kinase inhibitor evobrutinib in relapsing multiple sclerosis during an open-label extension to a phase II study [abstract]. *Mult Scler* 2020;26(Suppl. 3):233 (P0235).
- 28 Montalban X, Shaw J, Dangond F. Effect of evobrutinib, a BTK inhibitor, on immune cell and immunoglobulin levels in relapsing MS: an open-label extension to a phase II study [abstract]. *Mult Scler* 2020;26(Suppl. 3):151 (P0070).
- 29 Merck KGaA, Darmstadt, Germany completes enrollment of evobrutinib phase III clinical trials ahead of ECTRIMS 2021. Press release. 04 October, 2021. Available: <https://www.emdgroup.com/en/news/enrollment-of-evobrutinib-phase-iii-clinical-trials-04-10-2021.html#>
- 30 Merrill JT, Neuwelt CM, Wallace DJ, et al. Efficacy and safety of rituximab in moderately-to-severely active systemic lupus erythematosus: the randomized, double-blind, phase II/III systemic lupus erythematosus evaluation of rituximab trial. *Arthritis Rheum* 2010;62:222–33.
- 31 Borchers AT, Keen CL, Shoenfeld Y, et al. Surviving the butterfly and the wolf: mortality trends in systemic lupus erythematosus. *Autoimmun Rev* 2004;3:423–53.
- 32 Gladman DD, Urowitz MB, Rahman P, et al. Accrual of organ damage over time in patients with systemic lupus erythematosus. *J Rheumatol* 2003;30:1955–9.
- 33 Smolen JS, Landewé RBM, Bijlsma JWJ, et al. EULAR recommendations for the management of rheumatoid arthritis with synthetic and biological disease-modifying antirheumatic drugs: 2019 update. *Ann Rheum Dis* 2020;79:685–99.
- 34 Mahajan TD, Mikuls TR. Recent advances in the treatment of rheumatoid arthritis. *Curr Opin Rheumatol* 2018;30:231–7.
- 35 Buonomo AR, Zappulo E, Viceconte G, et al. Risk of opportunistic infections in patients treated with alemtuzumab for multiple sclerosis. *Expert Opin Drug Saf* 2018;17:709–17.
- 36 Mulero P, Midaglia L, Montalban X. Ocrelizumab: a new milestone in multiple sclerosis therapy. *Ther Adv Neurol Disord* 2018;11:1756286418773025.
- 37 Bar-Or A, Grove RA, Austin DJ, et al. Subcutaneous ofatumumab in patients with relapsing-remitting multiple sclerosis: the mirror study. *Neurology* 2018;90:e1805–14.
- 38 Singer BA. The role of natalizumab in the treatment of multiple sclerosis: benefits and risks. *Ther Adv Neurol Disord* 2017;10:327–36.
- 39 Luna G, Alping P, Burman J. Infection risks among patients with multiple sclerosis treated with fingolimod, natalizumab, rituximab, and injectable therapies. *JAMA Neurol* 2020;77:184–91.
- 40 Montalban X, Wolinsky J, Arnold DL. Safety and efficacy of evobrutinib, a Bruton's tyrosine kinase inhibitor in relapsing multiple sclerosis over 2.5 years of the open-label extension to a phase II trial [abstract]. *Neurology* 2022;98(Suppl. 18):2812 (P5-4.001).
- 41 Crawford JJ, Johnson AR, Misner DL, et al. Discovery of GDC-0853: a potent, selective, and noncovalent Bruton's tyrosine kinase inhibitor in early clinical development. *J Med Chem* 2018;61:2227–45.
- 42 von Hundelshausen P, Siess W. Bleeding by Bruton tyrosine kinase-inhibitors: dependency on drug type and disease. *Cancers (Basel)* 2021;13:1103.
- 43 Oh J, Cohen S, Isenberg DA. The safety of fenebrutinib in a large population of patients with diverse autoimmune indications supports investigation in multiple sclerosis (MS). Presented at AAN, 2021:Session S25.005.
- 44 Seery N, Sharmin S, Li V, et al. Predicting infection risk in multiple sclerosis patients treated with Ocrelizumab: a retrospective cohort study. *CNS Drugs* 2021;35:907–18.
- 45 Perriguet M, Maarouf A, Stellmann J-P, et al. Hypogammaglobulinemia and infections in patients with multiple sclerosis treated with rituximab. *Neurol Neuroimmunol Neuroinflamm* 2022;9:e1115.
- 46 Vollmer BL, Wallach AJ, Corboy JR, et al. Serious safety events in rituximab-treated multiple sclerosis and related disorders. *Ann Clin Transl Neurol* 2020;7:1477–87.