

A systematic review of the validated monogenic causes of human male infertility: 2020 update and a discussion of emerging gene–disease relationships

Brendan J. Houston^{1,*}, Antoni Riera-Escamilla²,
Margot J. Wyrwoll³, Albert Salas-Huetos^{4,5}, Miguel J. Xavier⁶,
Liina Nagirnaja^{7,8}, Corinna Friedrich³, Don F. Conrad^{7,8,9},
Kenneth I. Aston^{4,8,9}, Csilla Krausz^{8,9,10}, Frank Tüttelmann^{3,9},
Moira K. O'Bryan^{1,8,9}, Joris A. Veltman^{6,9}, and Manon S. Oud^{11,*}

¹School of BioSciences and Bio21 Institute, The University of Melbourne, Parkville, VIC, Australia ²Andrology Department, Fundació Puigvert, Universitat Autònoma de Barcelona, Institut de Investigacions Biomèdiques Sant Pau (IIB-Sant Pau), Barcelona, Catalonia, Spain ³Institute of Reproductive Genetics, University of Münster, Münster, Germany ⁴Andrology and IVF Laboratory, Division of Urology, Department of Surgery, University of Utah School of Medicine, Salt Lake City, UT, USA ⁵Department of Nutrition, Harvard T.H. Chan School of Public Health, Harvard University, Boston, MA, USA ⁶Faculty of Medical Sciences, Biosciences Institute, Newcastle University, Newcastle upon Tyne, UK ⁷Division of Genetics, Oregon National Primate Research Center, Oregon Health & Science University, Beaverton, OR, USA ⁸Genetics of Male Infertility Initiative (GEMINI) ⁹International Male Infertility Genomics Consortium (IMIGC) ¹⁰Department of Experimental and Clinical Biomedical Sciences “Mario Serio”, Centre of Excellence DeNothe, University of Florence, Florence, Italy ¹¹Department of Human Genetics, Donders Institute for Brain, Cognition and Behaviour, Radboudumc, Nijmegen, the Netherlands

*Correspondence address. School of BioSciences and Bio21 Institute, The University of Melbourne, 30 Flemington Rd, Parkville, VIC 3052, Australia. E-mail: brendan.houston@unimelb.edu.au (B.J.H.) <https://orcid.org/0000-0002-1078-756X>; Department of Human Genetics (route 848), Donders Institute for Brain, Cognition and Behaviour, Radboudumc, Geert Grooteplein Zuid 10, 6525 GA Nijmegen, the Netherlands. E-mail: manon.oud@radboudumc.nl (M.S.O.) <https://orcid.org/0000-0001-9513-3030>

Submitted on June 21, 2021; resubmitted on August 05, 2021; editorial decision on August 12, 2021

TABLE OF CONTENTS

- Introduction
- Methods
 - Search strategy and study selection
 - Data extraction and assessment
- Results
 - Summary of included studies and design
 - Systematic evaluation of evidence
 - Insights into the genetic causes of male infertility
- Discussion
 - Recent developments in genetics of male infertility research and diagnostics
 - Identifying the variant(s) causative for male infertility
 - Dynamics of genotype–phenotype mapping
 - Recommendations for genetic testing in male infertility
 - Wider implications of male infertility genetics
 - Strengths and limitations
- Conclusion

BACKGROUND: Human male infertility has a notable genetic component, including well-established diagnoses such as Klinefelter syndrome, Y-chromosome microdeletions and monogenic causes. Approximately 4% of all infertile men are now diagnosed with a genetic cause, but a majority (60–70%) remain without a clear diagnosis and are classified as unexplained. This is likely in large part due to a delay in the field adopting next-generation sequencing (NGS) technologies, and the absence of clear statements from field leaders as to what constitutes a validated cause of human male infertility (the current paper aims to address this). Fortunately, there has been a significant increase in the number of male infertility NGS studies. These have revealed a considerable number of novel gene–disease relationships (GDRs), which each require stringent assessment to validate the strength of genotype–phenotype associations. To definitively assess which of these GDRs are clinically relevant, the International Male Infertility Genomics Consortium (IMIGC) has identified the need for a systematic review and a comprehensive overview of known male infertility genes and an assessment of the evidence for reported GDRs.

OBJECTIVE AND RATIONALE: In 2019, the first standardised clinical validity assessment of monogenic causes of male infertility was published. Here, we provide a comprehensive update of the subsequent 1.5 years, employing the joint expertise of the IMIGC to systematically evaluate all available evidence (as of 1 July 2020) for monogenic causes of isolated or syndromic male infertility, endocrine disorders or reproductive system abnormalities affecting the male sex organs. In addition, we systematically assessed the evidence for all previously reported possible monogenic causes of male infertility, using a framework designed for a more appropriate clinical interpretation of disease genes.

SEARCH METHODS: We performed a literature search according to the PRISMA guidelines up until 1 July 2020 for publications in English, using search terms related to ‘male infertility’ in combination with the word ‘genetics’ in PubMed. Next, the quality and the extent of all evidence supporting selected genes were assessed using an established and standardised scoring method. We assessed the experimental quality, patient phenotype assessment and functional evidence based on gene expression, mutant *in-vitro* cell and *in-vivo* animal model phenotypes. A final score was used to determine the clinical validity of each GDR, across the following five categories: no evidence, limited, moderate, strong or definitive. Variants were also reclassified according to the American College of Medical Genetics and Genomics-Association for Molecular Pathology (ACMG-AMP) guidelines and were recorded in spreadsheets for each GDR, which are available at imigc.org.

OUTCOMES: The primary outcome of this review was an overview of all known GDRs for monogenic causes of human male infertility and their clinical validity. We identified a total of 120 genes that were moderately, strongly or definitively linked to 104 infertility phenotypes.

WIDER IMPLICATIONS: Our systematic review curates all currently available evidence to reveal the strength of GDRs in male infertility. The existing guidelines for genetic testing in male infertility cases are based on studies published 25 years ago, and an update is far overdue. The identification of 104 high-probability ‘human male infertility genes’ is a 33% increase from the number identified in 2019. The insights generated in the current review will provide the impetus for an update of existing guidelines, will inform novel evidence-based genetic testing strategies used in clinics, and will identify gaps in our knowledge of male infertility genetics. We discuss the relevant international guidelines regarding research related to gene discovery and provide specific recommendations to the field of male infertility. Based on our findings, the IMIGC consortium recommend several updates to the genetic testing standards currently employed in the field of human male infertility, most important being the adoption of exome sequencing, or at least sequencing of the genes validated in this study, and expanding the patient groups for which genetic testing is recommended.

Key words: genetics / male infertility / clinical validity / gene panel / gene–disease relationship / next-generation sequencing / spermatogenic failure / multiple morphological abnormalities of the sperm flagella / systematic review

Introduction

Male infertility is a common condition, affecting at least 7% of men worldwide, and is often predicted to be largely genetic in origin (Krausz and Riera-Escamilla, 2018). A majority of all human (84%, 16 598; Uhlen et al., 2015) and mouse (90%, 18 037; Schultz et al., 2003) protein-coding genes are expressed in the testis, emphasising that sperm production is a complex process and involves many separate biological pathways. Furthermore, sperm must mature in the epididymis and undergo a final step of activation in the female reproductive tract, termed ‘capacitation’, before they are capable of fertilising an oocyte. By extension, there are many points during sperm development and maturation that could be compromised by the effect of genetic variants. The identification of genes affected by these

variants and the assessment of definitive genotype–phenotype correlations, however, remains a challenge.

Advances in next-generation sequencing (NGS) have greatly facilitated the unbiased exome-wide (whole-exome sequencing (WES)) and genome-wide (whole-genome sequencing (WGS)) detection of any genetic variants that may play a role in male infertility (e.g. Coutton et al., 2019; Alhathal et al., 2020; Chen et al., 2020; Liu et al., 2021). However, the population frequency of these variants is expected to be very low given their negative effect on fertility. For this reason, the analysis of large patient and control cohorts is essential to identify recurrently mutated genes and detect statistical enrichments in patient cohorts. One major problem in the male infertility field is that genetic testing strategies employed in andrology clinics are not standardised,

and in some countries/states even the most basic of tests (karyotype and azoospermia factor deletion analysis) are still not routinely used.

The male infertility field is currently catching up with other fields/disease types with a strong genetic component, such as intellectual disability, neuromuscular disorders and hereditary hearing impairments (Chiu *et al.*, 2020; Markitantova and Simirskii, 2020; Whatley *et al.*, 2020). The rapid uptake of NGS technologies in the male infertility research field over the past 5–10 years, as well as the development of international consortia to collect and characterise clinical cohorts, is aiding in the transition of findings into clinical practice. To assist in this feedback of knowledge, clear direction is required for the validity of which individual genes to be screened and their relevance to certain types of infertility.

In this article, we provide an updated clinical validity assessment of the monogenic causes of male infertility (Oud *et al.*, 2019), through the systematic analysis of newly published evidence from January 2019 to July 2020 for individual gene–disease relationships (GDRs). We have employed the joint expertise of the International Male Infertility Genomics Consortium (IMIGC) to systematically evaluate/re-evaluate all available evidence for published monogenic causes of isolated or syndromic male infertility, endocrine disorders that impact male fertility and reproductive system abnormalities affecting the male sex organs. This analysis has resulted in the identification of 104 high-probability ‘human male infertility genes’, a 33% increase from the number identified in 2019.

Methods

Search strategy and study selection

A literature search was performed as described in Oud *et al.* (2019) to identify articles reporting on monogenic causes of male infertility or male reproductive system anomalies entered into MEDLINE-PubMed before 1 July 2020. Assessment of whether the articles met the inclusion or exclusion criteria (detailed in Supplementary Table S1) was performed by two independent reviewers (B.J.H. and M.S.O.). The present study and the corresponding search protocol were registered with the PROSPERO registry (<http://www.crd.york.ac.uk/PROSPERO>) as PROSPERO 2021: CRD42021229164.

Data extraction and assessment

The clinical validity of each identified GDR was scored using a system published by Smith *et al.* (2017). Scoring was performed by two reviewers, randomly assigned from the pool of eight reviewing authors (B.J.H., A.R.-E., M.J.W., A.S.-H., M.J.X., L.N., C.F. and M.S.O.) using a standardised assessment template to extract gene names, inheritance patterns, patient phenotypes, method of discovery (sequencing method); annotate variants; and assess both functional evidence and clinical data, including the outcome of ART and recorded comorbidities. Expression of genes across human organs was assessed by consulting data available on the Human Protein Atlas website, NCBI’s RNA-seq dataset (Fagerberg *et al.*, 2014), GTEx and an unpublished human testis single-cell RNA-seq library tool (<https://conradlab.shinyapps.io/HISTA>). To avoid bias in

gene–disease evaluation and any conflicts of interest, reviewers were not allowed to score any GDRs they had published. Scoring was separated into five categories: no evidence (<3 points), limited (3–8 points), moderate (9–12 points), strong (13–15 points) or definitive (>15 points), with a maximum of 17 points. After independent scoring, the individual scores (for each GDR) for both reviewers were compared and any inconsistencies in scoring (>1 point difference or a difference in the final classification) were settled by the two assigned reviewers. Where this was not possible, the scoring was discussed with all non-conflicted reviewers. GDRs with a moderate or higher classification were deemed as confidently linked to human male infertility and combined scoring sheets are available at <http://www.imigc.org>. All results in the study are collated in Supplementary Table SII.

Results

Summary of included studies and design

We performed a literature search using terms related to ‘male infertility’ in combination with keywords related to the word ‘genetics’ in MEDLINE-PubMed and used the same inclusion and exclusion criteria as described previously (Oud *et al.*, 2019). A total of 26 250 articles were identified, of which 2765 new articles were identified since the previous search in 2018 and not covered by the previous review (Fig. 1). The total number of publications on genetic causes of male infertility has increased by 13% from 849 over the period 2010–2014 to 963 articles in the period 2015–2019 (Fig. 2A). Furthermore, while the final search performed for this review was completed in mid-2020, the total number of 2020 studies was estimated to overtake the 2019 number by 20%. The absolute and relative contribution of publications on proposed monogenic causes of phenotypes related to male infertility is also growing (46% in 2017 versus 52% in 2020). The relative contribution of publications on association studies has declined by 42% (27% in 2017 versus 19% in 2020; Fig. 2B). The shift away from Sanger sequencing to NGS methods is continuing to take place, and 71% of all sequencing studies used NGS in 2020 (Fig. 2C), which constitutes an increase of 90% since 2017. While WGS has started to emerge in the field (recent examples: Bedoni *et al.*, 2016; Wang *et al.*, 2017; Arafat *et al.*, 2020; Yuan *et al.*, 2020), WES is currently still the predominant method over panel sequencing and WGS (75% versus 19% and 6%, respectively). Nevertheless, there are clinical presentations where Sanger/panel sequencing is still being utilised at a high frequency, e.g. 63% of studies on 46,XX and 46,XY disorders/differences of sexual development (DSDs) in the period of 2019–2020.

Systematic evaluation of evidence

A total of 1523 publications met all inclusion criteria and were used in this systematic review. Of these, 186 publications were published in the period from 2019 to mid-2020 and were thus not included in the previous clinical validity assessment. Overall, 657 individual GDRs described in these 1523 publications were investigated, of which 136 were novel and 521 were re-evaluated with our updated assessment

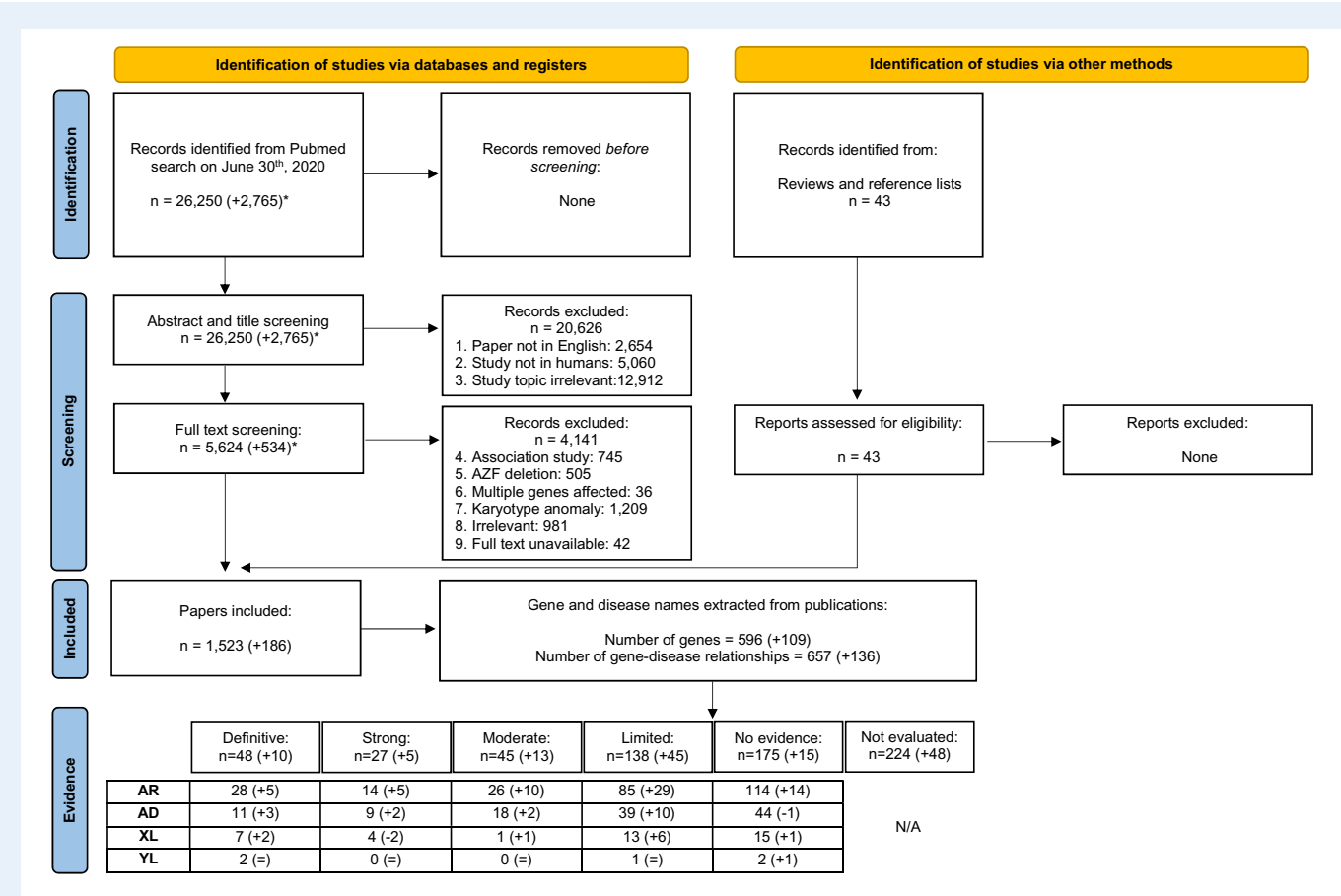


Figure 1. PRISMA flowchart of search and assessment process. AZF, azoospermia factor; R, autosomal recessive; AD, autosomal dominant; XL, X-linked; YL, Y-linked.

criteria in order to incorporate any additional supporting evidence (Supplementary Table SII).

The quality and the extent of all evidence for the GDRs were assessed by two independent reviewers, using a standardised scoring method. This assessment was performed for GDRs that were new (n = 136), existing with newly published evidence (n = 145) or previously confidently linked (moderate, strong or definitive) to male infertility with no newly published evidence (n = 19). This score was used to assign a clinical validity of each GDR as: no evidence, limited, moderate, strong or definitive. We assessed the experimental quality, patient phenotype information, functional evidence based on gene expression and the study of *in-vitro* and *in-vivo* loss-of-function animal/cell models. Variants were also reclassified according to the widely accepted the American College of Medical Genetics and Genomics-Association for Molecular Pathology (ACMG-AMP) standards and then recorded in spreadsheets for each GDR.

Of the newly identified GDRs, 17 were classified as having moderate evidence or higher (confidently associated with the phenotype) and 43 were classified as having limited evidence. After classification of the existing GDRs that had new evidence published and scoring of GDRs that were previously confidently linked to male infertility with our updated scoring criteria, 45 increased in

score since 2019, 11 decreased in score and 9 changed from unable to be classified to no evidence (or vice versa). As detailed above, GDRs were listed as 'unable to classify' when the predicted inheritance pattern or genotypes were not reported. In comparison to the previous assessment, 456 scores did not change because no (or insufficient) new evidence was published during the search period (Supplementary Table SII).

The novel and established GDRs combined resulted in a total of 104 genes confidently linked to 120 human male infertility or abnormal genitourinary development phenotypes with moderate (n = 45), strong (n = 27) or definitive (n = 48) evidence (Tables I and II). An overview of the organ or cell-level role(s) of these genes is detailed in Fig. 3. Another 138 GDRs were classified as 'limited' and are thus candidate genes whose dysfunction may result in a male infertility disorder (Supplementary Table SII). We propose that the latter (limited evidence) group will be of particular interest for review in the next few years.

Insights into the genetic causes of male infertility

As outlined above, in recent years, the identification of genes confidently linked to a male infertility phenotype has risen by 150% from a

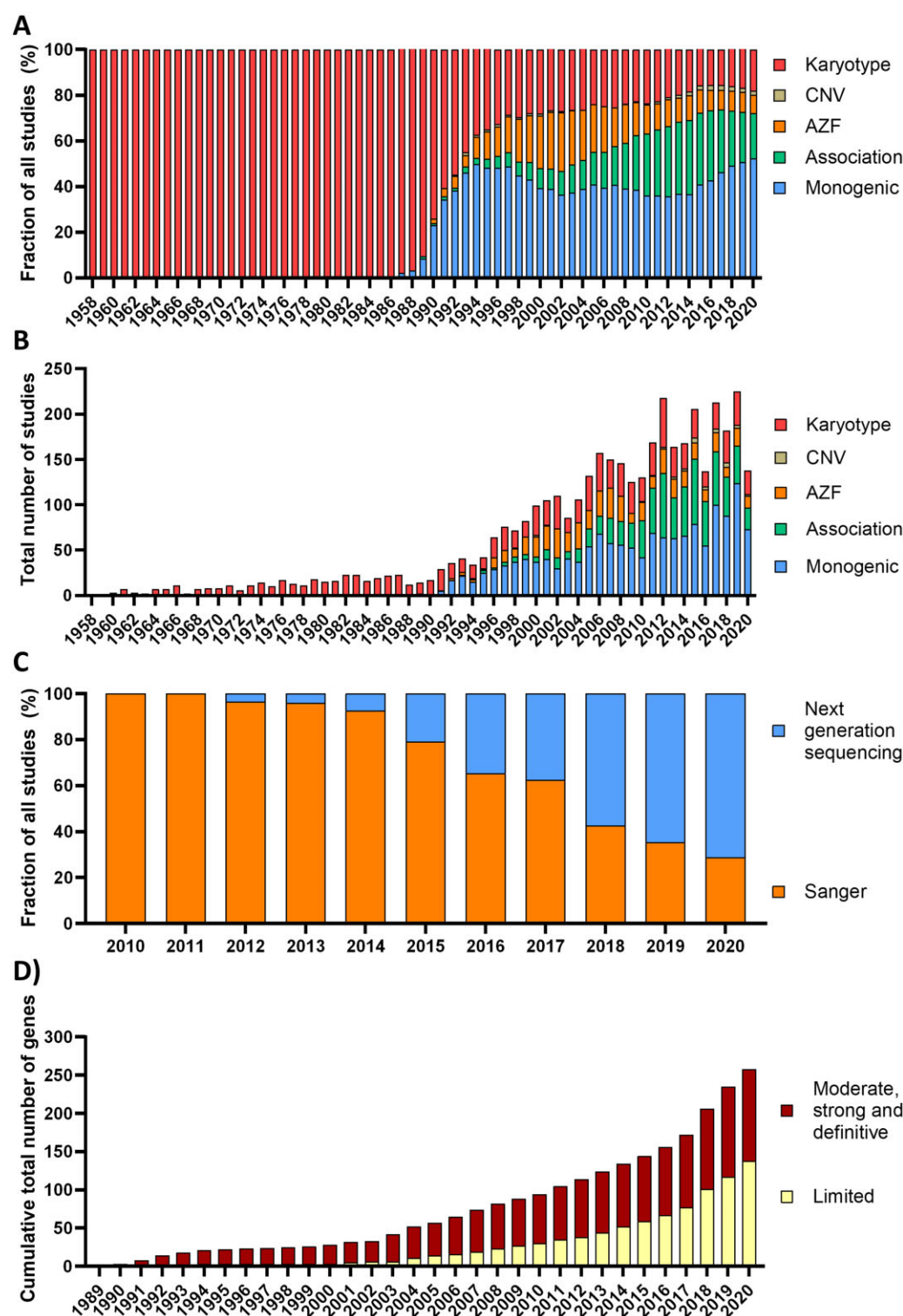


Figure 2. Breakdown of genetic testing approach and number of genes associated with male infertility phenotypes with limited or moderate and higher evidence classification, over time. (A) The fraction of studies assessed in this paper that used particular sequencing technologies to elucidate causes of male infertility from 1958 to 2020, including karyotyping, copy number variation assessment, azoospermia factor region deletion assessment, association studies and studies investigating monogenic causes. (B) The total number of studies assessed in this paper investigating male infertility, from 1958 to 2020, based on sequencing approach. (C) The fraction of studies assessed in this paper using next-generation sequencing technology compared to Sanger sequencing, from 2010 to 2020. (D) The cumulative number of genes and their strength of evidence as linked to male infertility phenotypes based the scoring criteria used in this paper, from 1989 to 2020. CNV, copy number variant.

Table 1 Numbers of genes that are at least moderately linked to male infertility or abnormal genitourinary development phenotypes.

Description	AR	AD	XL	YL	Total
Isolated infertility	27	5	4	0	36
Acephalic sperm	3	0	0	0	3
Globozoospermia	1	0	0	0	1
Macrozoospermia	1	0	0	0	1
Multiple morphological abnormalities of the sperm flagella	13	1	0	0	14
Non-obstructive azoospermia or oligozoospermia	7	4	3	0	14
Congenital bilateral absence of the vas deferens	1	0	1	0	2
Fertilisation failure	1	0	0	0	1
Syndromic infertility	13	3	1	0	17
Primary ciliary dyskinesia	7	0	1	0	8
Other syndromes	6	3	0	0	9
Endocrine disorder/Reproductive system syndrome	28	30	7	2	67
Disorders of sexual development	14	13	4	2	33
Hypogonadotropic hypogonadism*	14	17	3	0	34

AR, autosomal recessive; AD, autosomal dominant; XL, X-linked; YL, Y-linked.

*We note that recent studies are identifying digenic/oligogenic causes for hypogonadotropic hypogonadism presentations.

stable average of approximately four per year in the period of 2000–2016 to 10 per year in the period of 2017–2019 (Fig. 2D). Additionally, the number of GDRs with limited (emerging) evidence is growing quickly, at an average of 17 new genes per year in the period 2017–2019 (Fig. 2D).

The majority of confident GDRs were endocrine disorders or reproductive system syndromes ($n=67$) and isolated infertility phenotypes ($n=36$), while a minority were linked to syndromic infertility ($n=17$), including primary ciliary dyskinesia (PCD; Table 1). The systematic analysis of patients who present with multiple morphological abnormalities of the sperm flagella (MMAF) phenotypes was also of particular note. In 2018, there were five genes confidently linked to human MMAF. This has now tripled to a total of 15 genes as of mid-2020. Although representing only a small fraction of patients with isolated infertility, the use of NGS has the potential to diagnose up to ~50% of MMAF patients (Toure et al., 2021). A further 15 genes were confidently linked to the most frequently presenting clinical presentations, non-obstructive azoospermia (NOA) and oligozoospermia (Tables 1 and II). The majority of all confident GDRs represented an autosomal recessive inheritance pattern ($n=68$), while autosomal dominant

($n=38$), X-linked ($n=12$) and Y-linked ($n=2$) inheritance patterns were also reported.

Discussion

The aim of this study was to provide an updated assessment of all genetic variants reported as causative of human male infertility phenotypes. We also highlight male infertility phenotypes that have received significant attention in the last few years and identify a group of promising new candidate genes. These genes are currently classified as limited evidence, requiring additional replication studies and/or functional evidence in order to be classified as strongly associated with male infertility. Based on our findings, the authors/the IMIGC consortium recommend several updates to the genetic testing standards currently employed in the field of human male infertility, most important being the adoption of exome sequencing as the default sequencing approach.

Our clinical validity assessment revealed that as of 1 July 2020, a total of 104 genes were linked to a total of 120 male infertility or abnormal genitourinary development phenotypes. This is a significant increase from the 2019 report wherein 78 genes (33% increase to 104) were associated with 92 phenotypes (30% increase to 120) at a moderate or higher level of supporting evidence. As this previous assessment included all published reports from 1958 to 2018, this significant increase in 2 years further emphasises the healthy uptake of studies to elucidate genetic causes of male infertility, specifically those using NGS.

Recent developments in genetics of male infertility research and diagnostics

The diagnostic rate of genetic tests for all types of isolated male infertility combined currently sits between 4% and 9.2% (Olesen et al., 2017; Punab et al., 2017; Tüttelmann et al., 2018). These rates are notably behind levels seen in other heterogeneous disorders with a large genetic contribution such as developmental delay (~30%) and cardiomyopathies (30–40%; Rehm, 2017). The biggest difference between these diseases is the slow uptake of NGS approaches in the male infertility field in research, but even more so in diagnostics. WES and WGS are now routinely being applied in the diagnostic follow-up of patients with other genetic disorders, resulting in the availability of very large cohorts for disease gene discovery (e.g. Bourinaris et al., 2020; Cuvertino et al., 2020; Kaplanis et al., 2020). This, unfortunately, is still not the case for severe forms of male infertility in most countries. However, as highlighted in Fig. 2C and D, the field of male infertility genetics is now expanding rapidly, largely due to the reduced costs and increasing accessibility of NGS, which allows for a more complete and economic testing of patients. Consequently, the number of novel candidate genes and validated disease genes is rapidly growing, which is essential for further diagnostic implementation of these approaches in male infertility.

Multiple morphological abnormalities of the sperm flagellum

The phenotype where most progress has been made in recent years is MMAF. Of the 31 newly discovered genes confidently linked to male infertility, 9 were linked to MMAF (29%). When just

Table II List of genes linked to male infertility or abnormal genitourinary development phenotypes classified as moderate evidence or higher.

Gene	Location	Disorder	Inheritance pattern	Score	Conclusion
Isolated infertility					
ADGRG2	Xp22.13	Congenital bilateral absence of the vas deferens; OMIM:300985	XL	16	Definitive
AR	Xq12	Non-obstructive azoospermia; OMIM:NA	XL	17	Definitive
ARMC2	6q21	Multiple morphological abnormalities of the sperm flagella; OMIM:618433	AR	11	Moderate
AURKC	19q13.43	Macrozoospermia; OMIM:243060	AR	17	Definitive
CFAP251	12q24.31	Multiple morphological abnormalities of the sperm flagella; OMIM:NA (PS258150)	AR	17	Definitive
CFAP43	10q25.1	Multiple morphological abnormalities of the sperm flagella; OMIM:617592	AR	17	Definitive
CFAP44	3q13.2	Multiple morphological abnormalities of the sperm flagella; OMIM:617593	AR	17	Definitive
CFAP65	2q35	Multiple morphological abnormalities of the sperm flagella; OMIM:618664	AR	15	Strong
CFAP69	7q21.13	Multiple morphological abnormalities of the sperm flagella; OMIM:617959	AR	13	Strong
CFAP91	3q13.33	Multiple morphological abnormalities of the sperm flagella; OMIM:609910	AR	9	Moderate
CFTR	7q31.2	Congenital bilateral/unilateral absence of vas deferens; OMIM:277180	AR	17	Definitive
DMRT1	9p24.3	Non-obstructive azoospermia; OMIM:NA (PS258150)	AD	10	Moderate
DNAH1	3p21.1	Multiple morphological abnormalities of the sperm flagella; OMIM:617576	AR	17	Definitive
DNAH17	17q25.3	Multiple morphological abnormalities of the sperm flagella; OMIM:618643	AR	15	Strong
DPY19L2	12q14.2	Globozoospermia; OMIM:613958	AR	16	Definitive
FANCM	14q21.2	Oligozoospermia; OMIM:NA (PS258150)	AR	13	Strong
FSIP2	2q32.1	Multiple morphological abnormalities of the sperm flagella; OMIM:618153	AR	12	Moderate
KLHL10	17q21.2	Oligozoospermia; OMIM:615081	AD	10.5	Moderate
MIAP	2p13.1	Non-obstructive azoospermia; OMIM:619108	AR	12	Moderate
MEI1	22q13.2	Non-obstructive azoospermia; OMIM:NA (PS258150)	AR	13	Strong
PLCZ1	12p12.3	Fertilization failure; OMIM:617214	AR	16	Definitive
PMFBP1	16q22.2	Acephalic spermatozoa; OMIM:618112	AR	14	Strong
QRICH2	17q25.1	Multiple morphological abnormalities of the sperm flagella; OMIM:618341	AR	12	Moderate
SEPTIN12	16p13.3	Multiple morphological abnormalities of the sperm flagella; OMIM:614822	AD	11.5	Moderate
SPEF2	5p13.2	Multiple morphological abnormalities of the sperm flagella; OMIM:618751	AR	14.75	Strong
STAG3	7q22.1	Non-obstructive azoospermia; OMIM:NA (PS258150)	AR	11.5	Moderate
SUN5	20q11.21	Acephalic sperm; OMIM:617187	AR	16.75	Definitive
SYCP2	20q13.33	Severe oligozoospermia; OMIM:258150	AD	10.75	Moderate
SYCP3	12q23.2	Non-obstructive azoospermia; OMIM:270960	AD	14	Strong
TEX11	Xp11	Non-obstructive azoospermia; OMIM:309120	XL	16	Definitive
TEX14	17q22	Non-obstructive azoospermia; OMIM:617707	AR	10	Moderate
TEX15	8p12	Non-obstructive azoospermia; OMIM:617960	AR	13.5	Strong
TSGA10	2q11.2	Acephalic spermatozoa; OMIM:617961	AR	10.25	Moderate
TTC29	4q31.22	Multiple morphological abnormalities of the sperm flagella; OMIM:618745	AR	14.5	Strong

Continued

Table II Continued

Gene	Location	Disorder	Inheritance pattern	Score	Conclusion
USP26	Xq26.2	Azoospermia or oligozoospermia; OMIM:NA (PS258150)	XL	9.5	Moderate
XRCC2	7q36.1	Non-obstructive azoospermia; OMIM: 617247	AR	10	Moderate
Syndromic infertility					
APOA1	11q23.3	Testicular amyloidosis; OMIM:105200	AD	12	Moderate
CATSPER2	15q15.3	Deafness infertility syndrome; OMIM: 611102	AR	11	Moderate
CCDC39	3q26.33	Primary ciliary dyskinesia; OMIM:613807	AR	13	Strong
CCDC40	17q25.3	Primary ciliary dyskinesia; OMIM:613808	AR	13.25	Strong
CDC14A	1p21.2	Oligoasthenoteratozoospermia OMIM:608653	AR	9	Moderate
CEP290	12q21.32	Leber congenital amaurosis; OMIM:611755	AR	9	Moderate
DNAF2	14q21.3	Primary ciliary dyskinesia; OMIM:612518	AR	12.25	Moderate
DNAF4	15q21.3	Primary ciliary dyskinesia; OMIM:615482	AR	13	Strong
DNAF6	Xq22.3	Primary ciliary dyskinesia; OMIM:300991	XL	15	Strong
FANCA	16q24.3	Occult Fanconi anaemia; OMIM:NA (PS227650)	AR	10	Moderate
LRRC6	8q24.22	Primary ciliary dyskinesia; OMIM:614935	AR	13.5	Strong
MNS1	15q21.3	Asthenoteratozoospermia; OMIM:NA (PS258150)	AR	9.5	Moderate
NLRP3	1q44	Muckle-Wells Syndrome; OMIM:191900	AD	9	Moderate
PKD1	16p13.3	Polycystic kidney disease and asthenozoospermia; OMIM:173900	AD	11.25	Moderate
RSPH3	6q25.3	Primary ciliary dyskinesia; OMIM:616481	AR	10.25	Moderate
SPEF2	5p13.2	Primary ciliary dyskinesia with multiple morphological abnormalities of the sperm flagellum; OMIM:618751	AR	12	Moderate
TRIM37	17q22	Mulibrey nanism; OMIM:253250	AR	10	Moderate
Reproductive system syndrome/endocrine disorder					
AMH	19p13.3	Persistent Müllerian duct syndrome; OMIM:261550	AR	17	Definitive
AMHR2	12q13.13	Persistent Müllerian duct syndrome; OMIM:261550	AR	17	Definitive
ANOS1	Xp22.31	Kallmann syndrome; OMIM:308700	XL	16	Definitive
ANOS1	Xp22.31	Isolated hypogonadotropic hypogonadism (normosmic); OMIM:308700	XL	13	Strong
AR	Xq12	Partial androgen insensitivity syndrome; OMIM:312300/300633	XL	17	Definitive
BMP4	14q22.2	Hypospadias; OMIM:NA (PS300633). Micropenis; OMIM:NA	AD	10.25	Moderate
BMP7	20q13.31	Hypospadias; OMIM:NA (PS300633)	AD	10.25	Moderate
BNC2	9p22.3-p22.2	Hypospadias; OMIM:NA (PS300633)	AD	10	Moderate
CCDC141	2q31.2	Kallmann syndrome; OMIM:NA (PS147950)	AR	12	Moderate
CHD7	8q12.2	Kallmann syndrome without CHARGE phenotype; OMIM:612370	AD	16	Definitive
CHD7	8q12.2	Isolated hypogonadotropic hypogonadism (normosmic) without CHARGE phenotype; OMIM:612370	AD	17	Definitive
CYP11A1	15q24.1	Congenital adrenal insufficiency with partial 46,XY sex reversal (Prader stage 4; 5 or 6); OMIM:613743	AR	16	Definitive
CYP11B1	8q24.3	46,XX Disorders of sexual development (Prader scale 4; 5 or 6) due to congenital adrenal hyperplasia (11-beta-hydroxylase deficiency); OMIM: 202010	AR	17	Definitive
CYP17A1	10q24.32	46,XY Disorders of sexual development (Prader stage 4, 5 or 6) due to 17-alpha-hydroxylase/17,20-lyase deficiency; OMIM:202110	AR	16	Definitive
CYP19A1	15q21.2	Aromatase excess syndrome with gynaecomastia; OMIM:139300	AD	17	Definitive
CYP19A1	15q21.2	46,XX Disorders of sexual development (Prader scale 4; 5 or 6) due to aromatase deficiency; OMIM:613546	AR	16	Definitive
CYP19A1	15q21.2	Male infertility in 46,XY men due to aromatase deficiency; OMIM:613546	AR	9.5	Moderate

Continued

Table II Continued

Gene	Location	Disorder	Inheritance pattern	Score	Conclusion
<i>CYP21A2</i>	6p21.33	Classic congenital adrenal hyperplasia; OMIM:201910	AR	17	Definitive
<i>CYP21A2</i>	6p21.33	Non-classic adrenal hyperplasia (late onset or no CAH symptoms); OMIM: 201910	AR	17	Definitive
<i>DHX37</i>	12q24.31	46,XY Disorders of sexual development (Prader scale 4; 5 or 6); OMIM:273250	AD	11	Moderate
<i>FGF17</i>	8p21.3	Kallmann syndrome; OMIM:615270	AD	9	Moderate
<i>FGF8</i>	10q24.32	Kallmann syndrome; OMIM: 612702	AD	10	Moderate
<i>FGF8</i>	10q24.32	Isolated hypogonadotropic hypogonadism (normosmic); OMIM:612702	AD	14	Strong
<i>FGFR1</i>	8p11.23	Kallmann syndrome; OMIM:147950	AD	17	Definitive
<i>FGFR1</i>	8p11.23	Isolated hypogonadotropic hypogonadism (normosmic); OMIM:147950	AD	17	Definitive
<i>FSHB</i>	11p14.1	Isolated hypogonadotropic hypogonadism; OMIM:229070	AR	12.25	Moderate
<i>FSHR</i>	2p16.3	Hypergonadotropic hypogonadism; OMIM:NA (PS147950)	AR	11	Moderate
<i>GATA4</i>	8p23.1	46,XY Disorders of sexual development (Prader scale 4; 5 or 6) resulting in anomalies of testicular development; OMIM:615542	AD	13	Strong
<i>GNRH1</i>	8p21.2	Isolated hypogonadotropic hypogonadism; OMIM:614841	AR	13.5	Strong
<i>GNRHR</i>	4q13.2	Isolated hypogonadotropic hypogonadism; OMIM:146110	AR	17	Definitive
<i>HS6ST1</i>	2q14.3	Kallmann syndrome; OMIM:614880	AD	9.5	Moderate
<i>HSD17B3</i>	9q22.32	46,XY Disorders of sexual development (Prader scale 4; 5 or 6) resulting in anomalies of testicular development; OMIM:264300	AR	16	Definitive
<i>HSD3B2</i>	1p12	Adrenal hyperplasia due to 3 β -hydroxysteroid dehydrogenase deficiency; OMIM:201810	AR	16.5	Definitive
<i>IGSF10</i>	3q25.1	Delayed puberty; OMIM:NA (PS147950)	AD	9.25	Moderate
<i>IL17RD</i>	3p14.3	Kallmann syndrome with hearing loss; OMIM:615267	AD	14.5	Strong
<i>INSL3</i>	19p13.11	Cryptorchidism; OMIM:219050	AD	12	Moderate
<i>KISS1R</i>	19p13.3	Kallmann syndrome; OMIM:614837	AR	9	Moderate
<i>KISS1R</i>	19p13.3	Isolated hypogonadotropic hypogonadism (normosmic); OMIM:614837	AR	17	Definitive
<i>LHB</i>	19q13.33	Isolated Hypogonadotropic hypogonadism; OMIM:228300	AR	16.5	Definitive
<i>LHCGR</i>	2p16.3	Leydig cell dysfunction with hypogonadism; OMIM:238320	AR	16.5	Definitive
<i>LHCGR</i>	2p16.3	Male precocious puberty; OMIM:176410	AD	17	Definitive
<i>MAMLD1</i>	Xq28	46,XY Disorders of Sex Development (Prader scale 4; 5 or 6); OMIM:300758	XL	15	Strong
<i>MYRF</i>	11q12.2	46XY Disorders of Sex Development, OMIM gene 608329	AD	14.5	Strong
<i>NR0B1</i>	Xp21.2	Congenital adrenal hypoplasia; OMIM:300200	XL	17	Definitive
<i>NR0B1</i>	Xp21.2	Late-onset adrenal failure or isolated hypogonadotropic hypogonadism; OMIM:NA (PS147950)	XL	17	Definitive
<i>NR5A1</i>	9q33.3	46,XY Disorders of sexual development (Prader scale 4; 5 or 6); OMIM:612965	AD	17	Definitive
<i>NR5A1</i>	9q33.3	46,XX Disorders of sexual development (Prader scale 4; 5 or 6); OMIM:617480	AD	16	Definitive
<i>NR5A1</i>	9q33.3	Isolated spermatogenic failure; OMIM:184757	AD	14	Strong
<i>PLXNA1</i>	3q21.3	Kallmann syndrome; OMIM:NA (PS147950)	AD	13.5	Strong
<i>POU1F1</i>	3p11.2	Combined pituitary hormone deficiency; OMIM:613038	AR	16	Definitive
<i>PROK2</i>	3p13	Kallmann syndrome; OMIM:610628	AR	11.5	Moderate
<i>PROKR2</i>	20p12.3	Kallmann syndrome; OMIM:244200	AR	17	Definitive
<i>PROPI</i>	5q35.3	Pituitary hormone deficiency; OMIM:262600	AR	17	Definitive
<i>RSPO1</i>	1p34.3	Palmoplantar hyperkeratosis with squamous cell carcinoma of skin and sex reversal; OMIM:610644	AR	12	Moderate
<i>SEMA3A</i>	7q21.11	Kallmann syndrome; OMIM:614897	AD	16	Definitive

Continued

Table II Continued

Gene	Location	Disorder	Inheritance pattern	Score	Conclusion
SOX10	22q13.1	Kallmann syndrome; OMIM:NA (PS147950)	AD	16	Definitive
SOX2	3q26.33	Isolated hypogonadotropic hypogonadism (normosmic); OMIM:NA (PS147950)	AD	16	Definitive
SOX3	Xq27.1	46,XX Disorders of sexual development (Prader scale 4; 5 or 6); OMIM:NA	XL	13	Strong
SOX9	17q24.3	46,XY Disorders of sexual development (Prader scale 4; 5 or 6); OMIM:NA	AD	13.5	Strong
SRD5A2	2p23.1	46,XY Disorders of sexual development (Prader scale 4; 5 or 6); OMIM:264600	AR	17	Definitive
SRY	Yp11.2	46,XX Disorders of sexual development (Prader scale 4; 5 or 6); OMIM:400045	YL	17	Definitive
SRY	Yp11.2	46,XY Disorders of sexual development (Prader scale 4; 5 or 6); OMIM:400044	YL	17	Definitive
STAR	8p11.23	Lipoid adrenal hyperplasia; OMIM:201710	AR	10	Moderate
TACR3	4q24	Kallmann syndrome; OMIM:614840	AR	16.5	Definitive
WDR11	10q26.12	Hypogonadotropic hypogonadism; OMIM:614858	AD	12	Moderate
WDR11	10q26.12	Kallmann syndrome; OMIM:614858	AD	11	Moderate
WT1	11p13	46,XY Disorders of sexual development (Prader scale 4; 5 or 6) without Wilm's tumour; OMIM:NA (PS400044)	AD	14.25	Strong

We note that recent studies are identifying digenic/oligogenic causes for hypogonadotropic hypogonadism presentations including Kallman syndrome.

considering genes likely associated with primary male infertility (i.e. spermatogenesis genes), this constitutes 47% of new, confidently classified genes (9 of 19). Currently, a total of 14 genes (*ARMC2*, *CFAP43*, *CFAP44*, *CFAP65*, *CFAP69*, *CFAP91*, *CFAP251*, *DNAH1*, *DNAH17*, *FSIP2*, *QRICH2*, *SEPTIN12*, *SPEF2* and *TTC29*) are confidently linked to MMAF and another 9 (*AK7*, *AKAP4*, *CEP135*, *CFAP70*, *DNAH2*, *DNAH6*, *DZ1P1*, *TTC21A* and *WDR19*) are listed as candidate genes, i.e. they have a limited classification. As a reflection of collaborative research efforts, MMAF-associated genes also comprise 42% of all confident genes that function during the spermiogenesis period.

Furthermore, and in line with the highly conserved core structure of motile cilia and flagella across tissues, there is a clear phenotypic continuum of patients with phenotypes ranging from classical PCD, manifesting as complete sperm immotility but normal cytology, to severe forms of teratozoospermia. Sperm tail development is a remarkable process that requires the expression of more than 1000 proteins (Toure et al., 2021) and their co-ordinated transport into a distinct ciliary compartment originating from a modified centriole that docks to the sperm head (Pleuger et al., 2020). Thus, there are likely many additional genes required for human/mammalian sperm tail development to be discovered. Novel evidence has been identified from MMAF studies, where variants in *SPEF2* cause PCD with MMAF (Tu et al., 2020). While the origin of this commonality is largely unexplored, it may reflect shared protein transport pathways into the ciliary/sperm tail compartment (Pleuger et al., 2020). There are also genes that play important roles in axoneme function (e.g. *DNAH17*; Whitfield et al., 2019), whose loss of function results in an isolated infertility phenotype where cilia are unaffected.

Azoospermia and oligozoospermia

NOA and severe oligozoospermia are expected to have extensive genetic heterogeneity owing to the multiple phases of spermatogenesis that can be affected to cause these presentations. Although a few genes confidently linked to primary testicular failure are beginning to emerge, including *MIAP*, *STAG3*, *SYCP2* and *TEX11*, where data from animal models indicate each is essential for meiosis (Yang et al., 2006; Arango et al., 2013; Winters et al., 2014; Yatsenko et al., 2015), large cohort sizes are critical to reveal the full spectrum of disease genes. The discovery and validation of three of these meiosis genes have been possible through the collaborative efforts of the IMIGC/GEMINI consortia and the use of large infertile cohorts and replication studies. This has now led to the availability of WES data for >3000 men with NOA or severe oligozoospermia, which underscores the importance of data sharing/collaboration for the continued identification of novel, rare genetic causes of male infertility. In addition, these large cohorts help to validate and better estimate the role of previously implicated variants/genes. For example, in 2017 variants in the D-box region of *PIWIL1* were implicated as a recurrent cause of NOA (Gou et al., 2017). Using WES on 2740 men with NOA or severe oligozoospermia, the IMIGC/GEMINI consortia demonstrated that pathogenic variants in the D-box region of *PIWIL1* specifically, and variants elsewhere in the gene, are not a common cause of male infertility (Oud et al., 2021).

Identifying the variant(s) causative for male infertility

Currently, ~33% of all identified GDRs proposed in the literature fell into the 'unable to classify' category. For most, this classification is given because the inheritance pattern is unclear. The list, however,

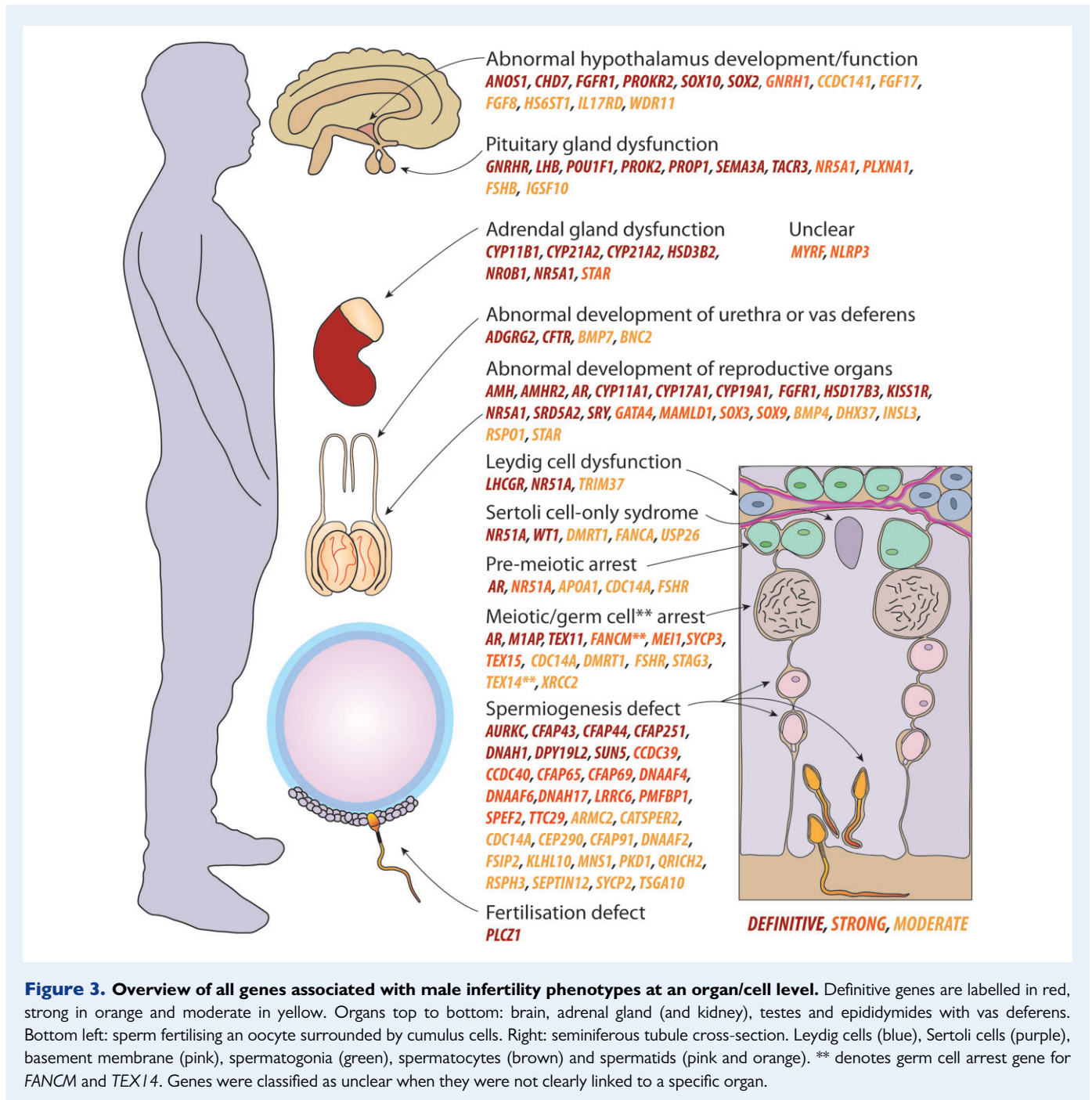


Figure 3. Overview of all genes associated with male infertility phenotypes at an organ/cell level. Definitive genes are labelled in red, strong in orange and moderate in yellow. Organs top to bottom: brain, adrenal gland (and kidney), testes and epididymides with vas deferens. Bottom left: sperm fertilising an oocyte surrounded by cumulus cells. Right: seminiferous tubule cross-section. Leydig cells (blue), Sertoli cells (purple), basement membrane (pink), spermatogonia (green), spermatocytes (brown) and spermatids (pink and orange). ** denotes germ cell arrest gene for *FANCM* and *TEX14*. Genes were classified as unclear when they were not clearly linked to a specific organ.

likely contains multiple genes that play an important role in the aetiology of monogenic male infertility. As with any disease, but perhaps exacerbated by the wide range of individual biological processes required for male fertility, it can be difficult to determine the role of poorly characterised genes, and whether loss of their function results in a disease state. To assist in filtering for high confidence variants, members of the GEMINI consortium have developed the 'Population Sampling Probability' pipeline (PSAP; Wilfert et al., 2016). This is particularly

useful when it is the first time a damaging variant has been found in a novel gene, where calculations are based on inheritance model (autosomal dominant, recessive, etc.) and allele frequency. As has been highlighted by the GEMINI consortium, this tool is useful for discovering promising new candidate disease genes and individual pathogenic variants, but independent replication and functional validation is still critically important before genes can be used in a diagnostic setting as a 'validated disease gene'.

Dynamics of genotype–phenotype mapping

Recent genetic male infertility studies suggest that a high percentage of diagnoses can be revealed, especially in cohorts of men with maturation arrest. A clear determination of the point of arrest (i.e. at spermatogonia or spermatocytes) can assist in refining possibly relevant genes containing variants, based on any known biological function(s). However, very little so far has been done outside of meiotic and spermatogonial arrest. Various genes have also been linked to multiple phenotypic outcomes; thus, the establishment of a clear genotype–phenotype correlation is not necessarily straightforward. One such example is the *TEX14* gene, where pathogenic variation can lead to a Sertoli cell-only phenotype or spermatocyte arrest (Fakhro et al., 2018). The progressive loss of germ cells may occur as a factor of age owing to a role in spermatogonial stem cell renewal, as suggested for *Nxf2* knockout mice (Pan et al., 2009). Alternatively, environmental exposures may interact with the genotype to lead to an exacerbation of the phenotype. Variability in the genotype–phenotype relationship has also been identified for single gene variants in reproductive system syndromes/endocrine disorders (Domenice et al., 2016; Gonçalves et al., 2017) in 12 of the 13 (92%) confident genes—*ANOS1*, *AR*, *CHD7*, *CYP19A1*, *CYP21A2*, *FGF8*, *FGFR1*, *KISS1R*, *LHCGR*, *NROB1*, *NR5A1* and *WDR11*. These disorders are largely complex in that they effect multiple hormonal pathways and tissues beyond the testis.

Other presentations with variability in genotype and phenotype include congenital hypogonadotropic hypogonadism (HH)/Kallmann syndrome. In addition to Mendelian causes, incomplete penetrance and oligogenic forms are thought to be causative for these disorders (Maione et al., 2018). One example is the *PROK2* gene, for which autosomal dominant, recessive and oligogenicity have been proposed to be causative (Leroy et al., 2008). For the DSD spectrum and HH, research groups are now actively exploring the role of oligogenic inheritance in contributing to the disease (Cangiano et al., 2021). For DSDs, this genetic explanation has been proposed following the finding that many patients present with at least one variant in two individual known or novel DSD genes, particularly when *MAMLD1* is affected (Camats et al., 2020; Li et al., 2020). Similarly, variants in *FGFR1* and other HH genes have been shown to cause Kallman syndrome in an oligogenic manner (reviewed in Cangiano et al., 2021).

Recommendations for genetic testing in male infertility

Although NGS methods are frequently used in research laboratories to study the genetics of male infertility, they have not yet been extensively employed in clinical genetic diagnostics for this condition. While there are no standardised international guidelines for clinical genetic testing in male infertility, a small number of guidelines have been published by professional andrology groups. Examples include guidelines for oligoasthenoteratozoospermia (OAT; Colpi et al., 2018) and Klinefelter syndrome (Zitzmann et al., 2021) by the European Academy of Andrology, and diagnostics/treatment prior to use of ART (Toth et al., 2019) by the German Association of the Scientific Medical Societies. However, sperm count cut-offs and genetic testing approaches vary widely between countries. Patients with oligozoospermia, <5 million sperm/ml (EU/USA), or azoospermia are generally offered karyotyping and Y-chromosome microdeletion analysis, while *CFTR* testing is recommended for men with suspected congenital

bilateral absence of the vas deferens (Krausz and Riera-Escamilla, 2018). These guidelines, or in some cases purely expert opinions, thus limit the genetic testing to the most common infertility presentations and exclude patients with other sperm phenotypes, such as teratozoospermia/asthenoteratozoospermia (e.g. globozoospermia and MMAF), and other sperm motility disorders (asthenozoospermia/OAT). According to the average clinical presentation of German men over the last 30 years, this means that at least 40% of infertile men are not being offered any form of genetic testing (Tüttelmann et al., 2018).

In line with the definitive evidence that pathogenic variants in at least 36 genes may result in isolated infertility, we advocate for an update of genetic testing guidelines for male infertility. Ideally, the blood of infertile men should be used for WES to identify any protein-coding variants in a non-biased manner. We appreciate there will often be an issue with a lack of expertise in this technology, or access to sequencing platforms. IMIGC members (imigc.org) are situated across the USA, Europe and Australia, and are interested in forming additional collaborations for clinical and research purposes. As a less impactful, backup approach, the genetic targets of panels used in targeting sequencing should at least be updated to include the genes validated in this study (those moderately linked and stronger). Additionally, a wider subset of patients/phenotypes should be sequenced. Such approaches will help to achieve more diagnoses, better-personalised treatment, improved risk assessment for the transmission of infertility to offspring and better counselling for potential health risks in the infertile man. It will also help to improve counselling of azoospermic men prior to testicular biopsy, as finding a genetic diagnosis may help in predicting the chances for successful testicular sperm extraction, which is an incredibly invasive procedure.

Wider implications of male infertility genetics

Precise phenotyping of men with pathogenic variants will assist in evaluating potential future health risks. Mounting evidence suggests that male infertility may pose as a predictive condition for life-threatening comorbidities in later life, such as various types of cancer and cardiovascular disease (Jensen et al., 2009; Eisenberg et al., 2014; Ehrlich, 2015). While the precise mechanism(s) underpinning this observation are unknown, it is notable that many genes that are highly expressed in the testis and lead to male infertility when mutated are also expressed in other organs, but at considerably lower levels. These include, for example, multiple DNA repair genes linked to infertility and various cancers (reviewed in Nagimaja et al., 2018) and *TEX11*, which is expressed in the testis and the pancreas according to RNA-seq data (GTEx Portal). As has been made clear above, this is the case for several cilia genes, where men often present with chronic bronchitis and other lung conditions (reviewed in Leigh et al., 2009; Sironen et al., 2020). Thus, additional studies where the health of infertile men is broadly investigated are urgently needed.

Although the topic could constitute an entire article itself, the rapidly increasing use of ART worldwide (de Mouzon et al., 2020) is resulting in the propagation of infertility-causing variants throughout the population. As we identify these variants in men who undergo ART, we will also be faced with delivering this information back to the patients through genetic counselling services. This is especially relevant for men with Y-linked variants, where any sons will presumably be afflicted with

the same infertility phenotype as their affected fathers and thus also require ART if wanting their own biological child.

Strengths and limitations

We used the joint expertise of the IMIGC to systematically evaluate all available evidence (as of 1 July 2020) for monogenic causes of isolated or syndromic male infertility, endocrine disorders or reproductive system abnormalities affecting the male sex organs. No other published reviews in this field come close to including the ~600 genes comprehensively evaluated here. We improved the quality of evidence scoring by including a larger number of reviewers from independent research groups with broad expertise in male infertility. As all research groups have been involved in disease gene discovery of various genes described in this study, we prevented bias as much as possible by not allowing scoring by reviewers who have worked on respective genes.

Conclusion

Here, we describe an updated clinical validity assessment for a total of 657 male infertility or abnormal genitourinary development GDRs, involving 596 genes. We identified 104 genes linked to 120 phenotypes with sufficient evidence for use in gene panels. These results may help to improve genetic testing in male infertility research and/or diagnostics.

Supplementary data

Supplementary data are available at *Human Reproduction Update* online.

Data availability

The present study and the corresponding search protocol were registered with the PROSPERO registry (<http://www.crd.york.ac.uk/PROSPERO>) as PROSPERO 2021: CRD42021229164. All scoring spreadsheets are accessible via the IMIGC website (www.imigc.org/data-sharing).

Acknowledgements

We appreciate the feedback from Raul Piña-Aguilar for his feedback during the initial discussion and planning of this study.

Authors' roles

B.J.H., A.R.-E., M.J.W., A.S.-H., M.J.X., L.N., C.F., M.S.O., M.K.O.B. and J.A.V. designed and supervised the study; and D.F.C., K.I.A., C.K. and F.T. assisted in supervising this study. B.J.H. and M.S.O. selected studies for the inclusion and evaluated their quality. The clinical validity assessments were done by B.J.H., A.R.-E., M.J.W., A.S.-H., M.J.X., L.N., C.F. and M.S.O., which were co-ordinated by B.J.H. and M.S.O. B.J.H. and M.S.O. wrote the first draft of the manuscript. All authors contributed to the writing and revision process.

Funding

National Health and Medical Research Council APPI120356 to M.K.O.B., J.A.V., D.F.C. and K.I.A. The Netherlands Organisation for Scientific Research (918-15-667) to J.A.V. as well as an Investigator Award in Science from the Wellcome Trust (209451) to J.A.V. German Research Foundation sponsored Clinical Research Unit 'Male Germ Cells: from Genes to Function' (DFG, CRU326) to C.F. and F.T. National Institutes of Health: Genomics of Spermatogenic Impairment (R01HD078641) to D.F.C. and K.I.A. Spanish Ministry of Health Instituto Carlos III-FIS-FEDER (Grant number: PI17/01822 PI20/01562) to A.R.-E. and C.K.

Conflict of interest

The authors declare no conflicts of interest.

References

- Alhathal N, Maddirevula S, Coskun S, Alali H, Assoum M, Morris T, Deek HA, Hamed SA, Alsuhailani S, Mirdawi A et al. A genomics approach to male infertility. *Genet Med* 2020;**22**:1967–1975.
- Arafat M, Harlev A, Har-Vardi I, Levitas E, Priel T, Gershoni M, Searby C, Sheffield VC, Lunenfeld E, Parvari R. Mutation in *CATIP* (C2orf62) causes oligoteratoasthenozoospermia by affecting actin dynamics. *J Med Genet* 2020. doi:10.1136/jmedgenet-2019-106825.
- Arango NA, Li L, Dabir D, Nicolau F, Pieretti-Vanmarcke R, Koehler C, McCarrey JR, Lu N, Donahoe PK. Meiosis I arrest abnormalities lead to severe oligozoospermia in meiosis I arresting protein (*MIap*)-deficient mice. *Biol Reprod* 2013;**88**:76.
- Bedoni N, Haer-Wigman L, Vaclavik V, Tran VH, Farinelli P, Balzano S, Royer-Bertrand B, El-Asrag ME, Bonny O, Ikonomidis C et al. Mutations in the polyglutamylase gene *TTL5*, expressed in photoreceptor cells and spermatozoa, are associated with cone-rod degeneration and reduced male fertility. *Hum Mol Genet* 2016;**25**:4546–4555.
- Bourinaris T, Smedley D, Cipriani V, Sheikh I, Athanasiou-Fragkouli A, Chinnery P, Morris H, Real R, Harrison V, Reid E et al.; Genomics England Research Consortium. Identification of *UBAP1* mutations in juvenile hereditary spastic paraplegia in the 100,000 Genomes Project. *Eur J Hum Genet* 2020;**28**:1763–1768.
- Camats N, Fluck CE, Audi L. Oligogenic origin of differences of sex development in humans. *Int J Mol Sci* 2020;**21**:1809.
- Cangiano B, Swee DS, Quinton R, Bonomi M. Genetics of congenital hypogonadotropic hypogonadism: peculiarities and phenotype of an oligogenic disease. *Hum Genet* 2021;**140**:77–111.
- Chen S, Wang G, Zheng X, Ge S, Dai Y, Ping P, Chen X, Liu G, Zhang J, Yang Y et al. Whole-exome sequencing of a large Chinese azoospermia and severe oligospermia cohort identifies novel infertility causative variants and genes. *Hum Mol Genet* 2020;**29**:2451–2459.
- Chiu W, Hsun YH, Chang KJ, Yarmishyn AA, Hsiao YJ, Chien Y, Chien CS, Ma C, Yang YP, Tsai PH et al. Current genetic survey and potential gene-targeting therapeutics for neuromuscular diseases. *Int J Mol Sci* 2020;**21**:9589.

- Colpi GM, Francavilla S, Haidl G, Link K, Behre HM, Goulis DG, Krausz C, Giwercman A. European Academy of Andrology guideline Management of oligo-astheno-teratozoospermia. *Andrology* 2018;**6**:513–524.
- Coutton C, Martinez G, Kherraf Z-E, Amiri-Yekta A, Bogueuet M, Saut A, He X, Zhang F, Cristou-Kent M, Escoffier J et al. Bi-allelic Mutations in ARMC2 Lead to Severe Astheno-Teratozoospermia Due to Sperm Flagellum Malformations in Humans and Mice. *Am J Hum Genet* 2019;**104**:331–340.
- Cuvertino S, Hartill V, Colyer A, Garner T, Nair N, Al-Gazali L, Canham N, Faundes V, Flinter F, Hertecant J et al.; Genomics England Research Consortium. A restricted spectrum of missense KMT2D variants cause a multiple malformations disorder distinct from Kabuki syndrome. *Genet Med* 2020;**22**:867–877.
- de Mouzon J, Chambers GM, Zegers-Hochschild F, Mansour R, Ishihara O, Banker M, Dyer S, Kupka M, Adamson GD. International Committee for Monitoring Assisted Reproductive Technologies world report: assisted reproductive technology 2012. *Hum Reprod* 2020;**35**:1900–1913.
- Domenice S, Machado AZ, Ferreira FM, Ferraz-de-Souza B, Lerario AM, Lin L, Nishi MY, Gomes NL, da Silva TE, Silva RB et al. Wide spectrum of NR5A1-related phenotypes in 46,XY and 46,XX individuals. *Birth Defects Res C Embryo Today* 2016;**108**:309–320.
- Ehrlich S. Effect of fertility and infertility on longevity. *Fertil Steril* 2015;**103**:1129–1135.
- Eisenberg ML, Li S, Behr B, Cullen MR, Galusha D, Lamb DJ, Lipshultz LI. Semen quality, infertility and mortality in the USA. *Hum Reprod* 2014;**29**:1567–1574.
- Fagerberg L, Hallstrom BM, Oksvold P, Kampf C, Djureinovic D, Odeberg J, Habuka M, Tahmasebpour S, Danielsson A, Edlund K et al. Analysis of the human tissue-specific expression by genome-wide integration of transcriptomics and antibody-based proteomics. *Mol Cell Proteomics* 2014;**13**:397–406.
- Fakhro KA, Elbardisi H, Arafa M, Robay A, Rodriguez-Flores JL, Al-Shakaki A, Syed N, Mezey JG, Abi Khalil C, Malek JA et al. Point-of-care whole-exome sequencing of idiopathic male infertility. *Genet Med* 2018;**20**:1365–1373.
- Goncalves CI, Fonseca F, Borges T, Cunha F, Lemos MC. Expanding the genetic spectrum of ANOS1 mutations in patients with congenital hypogonadotropic hypogonadism. *Hum Reprod* 2017;**32**:704–711.
- Gou LT, Kang JY, Dai P, Wang X, Li F, Zhao S, Zhang M, Hua MM, Lu Y, Zhu Y et al. Ubiquitination-deficient mutations in human Piwi cause male infertility by impairing histone-to-protamine exchange during spermiogenesis. *Cell* 2017;**169**:1090–1104.e13.
- Jensen TK, Jacobsen R, Christensen K, Nielsen NC, Bostofte E. Good semen quality and life expectancy: a cohort study of 43,277 men. *Am J Epidemiol* 2009;**170**:559–565.
- Kaplanis J, Samocha KE, Wiel L, Zhang Z, Arvai KJ, Eberhardt RY, Gallone G, Lelieveld SH, Martin HC, McRae JF et al.; Deciphering Developmental Disorders Study. Evidence for 28 genetic disorders discovered by combining healthcare and research data. *Nature* 2020;**586**:757–762.
- Krausz C, Riera-Escamilla A. Genetics of male infertility. *Nat Rev Urol* 2018;**15**:369–384.
- Leigh MW, Pittman JE, Carson JL, Ferkol TW, Dell SD, Davis SD, Knowles MR, Zariwala MA. Clinical and genetic aspects of primary ciliary dyskinesia/Kartagener syndrome. *Genet Med* 2009;**11**:473–487.
- Leroy C, Fouveaut C, Leclercq S, Jacquemont S, Boullay HD, Lespinasse J, Delpach M, Dupont JM, Hardelin JP, Dode C. Biallelic mutations in the prokineticin-2 gene in two sporadic cases of Kallmann syndrome. *Eur J Hum Genet* 2008;**16**:865–868.
- Li L, Gao F, Fan L, Su C, Liang X, Gong C. Disorders of sex development in individuals harbouring MAMLD1 variants: WES and interactome evidence of oligogenic inheritance. *Front Endocrinol (Lausanne)* 2020;**11**:582516.
- Liu C, Tu C, Wang L, Wu H, Houston BJ, Mastroiusta FK, Zhang W, Shen Y, Wang J, Tian S et al. Deleterious variants in X-linked CFAP47 induce asthenoteratozoospermia and primary male infertility. *Am J Hum Genet* 2021;**108**:309–323.
- Maione L, Dwyer AA, Francou B, Guiochon-Mantel A, Binart N, Bouligand J, Young J. GENETICS IN ENDOCRINOLOGY: genetic counseling for congenital hypogonadotropic hypogonadism and Kallmann syndrome: new challenges in the era of oligogenism and next-generation sequencing. *Eur J Endocrinol* 2018;**178**:R55–R80.
- Markitantova Y, Simirskii V. Inherited eye diseases with retinal manifestations through the eyes of homeobox genes. *Int J Mol Sci* 2020;**21**:1602.
- Nagirnaja L, Aston KI, Conrad DF. Genetic intersection of male infertility and cancer. *Fertil Steril* 2018;**109**:20–26.
- Olesen IA, Andersson AM, Aksglaede L, Skakkebaek NE, Rajpert-de Meyts E, Joergensen N, Juul A. Clinical, genetic, biochemical, and testicular biopsy findings among 1,213 men evaluated for infertility. *Fertil Steril* 2017;**107**:74–82.e7.
- Oud MS, Volozonoka L, Friedrich C, Kliesch S, Nagirnaja L, Gilissen C, O'Bryan MK, McLachlan RI, Aston KI, Tuttelmann F et al. Lack of evidence for a role of PIWIL1 variants in human male infertility. *Cell* 2021;**184**:1941–1942.
- Oud MS, Volozonoka L, Smits RM, Vissers L, Ramos L, Veltman JA. A systematic review and standardized clinical validity assessment of male infertility genes. *Hum Reprod* 2019;**34**:932–941.
- Pan J, Eckardt S, Leu NA, Buffone MG, Zhou J, Gerton GL, McLaughlin KJ, Wang PJ. Inactivation of Nxf2 causes defects in male meiosis and age-dependent depletion of spermatogonia. *Dev Biol* 2009;**330**:167–174.
- Pleuger C, Lehti MS, Dunleavy JE, Fietz D, O'Bryan MK. Haploid male germ cells-the Grand Central Station of protein transport. *Hum Reprod Update* 2020;**26**:474–500.
- Punab M, Poolamets O, Paju P, Vihlajev V, Pomm K, Ladvá R, Korrovits P, Laan M. Causes of male infertility: a 9-year prospective monocentre study on 1737 patients with reduced total sperm counts. *Hum Reprod* 2017;**32**:18–31.
- Rehm HL. Evolving health care through personal genomics. *Nat Rev Genet* 2017;**18**:259–267.
- Schultz N, Hamra FK, Garbers DL. A multitude of genes expressed solely in meiotic or postmeiotic spermatogenic cells offers a myriad of contraceptive targets. *Proc Natl Acad Sci U S A* 2003;**100**:12201–12206.
- Sironen A, Shoemark A, Patel M, Loebinger MR, Mitchison HM. Sperm defects in primary ciliary dyskinesia and related causes of male infertility. *Cell Mol Life Sci* 2020;**77**:2029–2048.
- Smith ED, Radtke K, Rossi M, Shinde DN, Darabi S, El-Khechen D, Powis Z, Helbig K, Waller K, Grange DK et al. Classification of genes: standardized clinical validity assessment of gene-disease associations aids diagnostic exome analysis and reclassifications. *Hum Mutat* 2017;**38**:600–608.

- Toth B, Baston-Bust DM, Behre HM, Bielfeld A, Bohlmann M, Buhling K, Ditttrich R, Goeckenjan M, Hancke K, Kliesch S et al. Diagnosis and treatment before assisted reproductive treatments. guideline of the DGGG, OEGGG and SGGG (S2k Level, AWMF register number 015-085, February 2019)—part 2, hemostaseology, andrology, genetics and history of malignant disease. *Geburtshilfe Frauenheilkd* 2019;**79**:1293–1308.
- Toure A, Martinez G, Kherraf ZE, Cazin C, Beurois J, Arnoult C, Ray PF, Coutton C. The genetic architecture of morphological abnormalities of the sperm tail. *Hum Genet* 2021;**140**:21–42.
- Tu C, Nie H, Meng L, Wang W, Li H, Yuan S, Cheng D, He W, Liu G, Du J et al. Novel mutations in *SPEF2* causing different defects between flagella and cilia bridge: the phenotypic link between MMAF and PCD. *Hum Genet* 2020;**139**:257–271.
- Tüttelmann F, Ruckert C, Ropke A. Disorders of spermatogenesis: perspectives for novel genetic diagnostics after 20 years of unchanged routine. *Med Genet* 2018;**30**:12–20.
- Uhlen M, Fagerberg L, Hallstrom BM, Lindskog C, Oksvold P, Mardinoglu A, Sivertsson A, Kampf C, Sjostedt E, Asplund A et al. Proteomics. Tissue-based map of the human proteome. *Science* 2015;**347**:1260419.
- Wang X, Jin H, Han F, Cui Y, Chen J, Yang C, Zhu P, Wang W, Jiao G, Wang W et al. Homozygous *DNAH1* frameshift mutation causes multiple morphological anomalies of the sperm flagella in Chinese. *Clin Genet* 2017;**91**:313–321.
- Whatley M, Francis A, Ng ZY, Khoh XE, Atlas MD, Dilley RJ, Wong EYM. Usher syndrome: genetics and molecular links of hearing loss and directions for therapy. *Front Genet* 2020;**11**:565216.
- Whitfield M, Thomas L, Bequignon E, Schmitt A, Stouvenel L, Montantin G, Tissier S, Duquesnoy P, Copin B, Chantot S et al. Mutations in *DNAH17*, encoding a sperm-specific axonemal outer dynein arm heavy chain, cause isolated male infertility due to asthenozoospermia. *Am J Hum Genet* 2019;**105**:198–212.
- Wilfert AB, Chao KR, Kaushal M, Jain S, Zollner S, Adams DR, Conrad DF. Genome-wide significance testing of variation from single case exomes. *Nat Genet* 2016;**48**:1455–1461.
- Winters T, McNicoll F, Jessberger R. Meiotic cohesin *STAG3* is required for chromosome axis formation and sister chromatid cohesion. *EMBO J* 2014;**33**:1256–1270.
- Yang F, De La Fuente R, Leu NA, Baumann C, McLaughlin KJ, Wang PJ. Mouse *SYCP2* is required for synaptonemal complex assembly and chromosomal synapsis during male meiosis. *J Cell Biol* 2006;**173**:497–507.
- Yatsenko AN, Georgiadis AP, Ropke A, Berman AJ, Jaffe T, Olszewska M, Westernstroer B, Sanfilippo J, Kurpisz M, Rajkovic A et al. X-linked *TEX11* mutations, meiotic arrest, and azoospermia in infertile men. *N Engl J Med* 2015;**372**:2097–2107.
- Yuan P, Yang C, Ren Y, Yan J, Nie Y, Yan L, Qiao J. A novel homozygous mutation of phospholipase C zeta leading to defective human oocyte activation and fertilization failure. *Hum Reprod* 2020;**35**:977–985.
- Zitzmann M, Akglaede L, Corona G, Isidori AM, Juul A, T'Sjoen G, Kliesch S, D'Hauwers K, Toppari J, Słowikowska-Hilczner J et al. European academy of andrology guidelines on Klinefelter Syndrome Endorsing Organization: European Society of Endocrinology. *Andrology* 2021;**9**:145–167.