

In the jaws of a titan: 3D comparative anatomy of the Canary giant lizards (Gallotiinae: *Gallotia*)

mandibles

Pérez-Martín, S., Fortuny, J., Cruzado-Caballero, P., Bernardini, F., and Castillo Ruiz, C.

Supplementary information

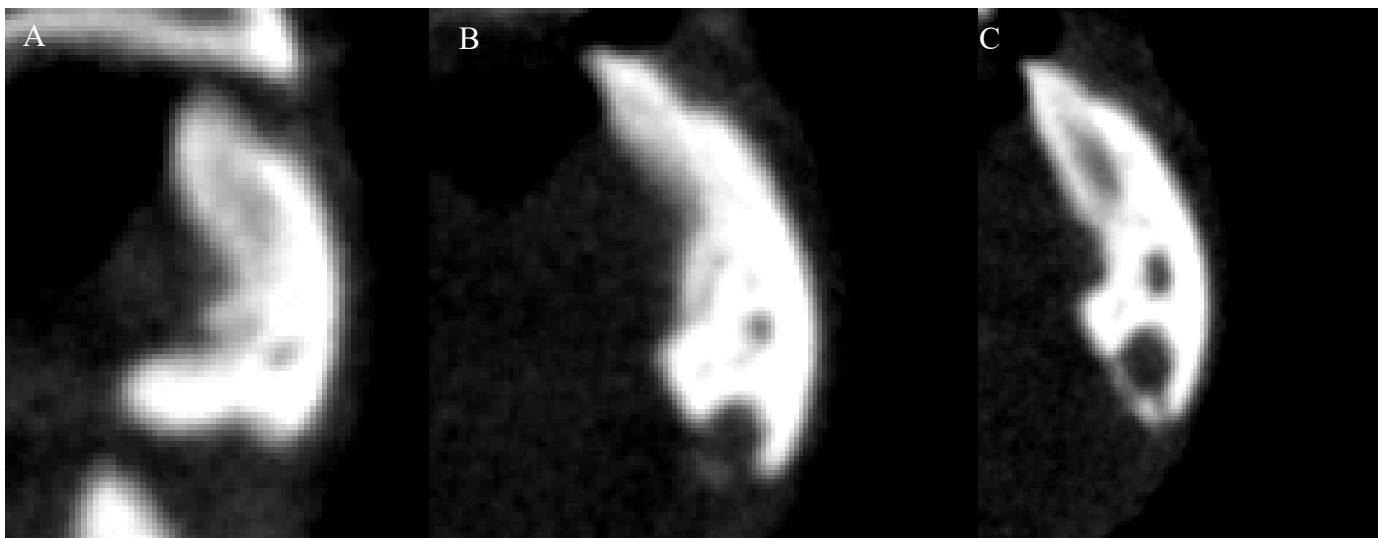
microComputed Tomography data

In order to evaluate different characters, each mandibular bone was digitally segmented. Below there are presented several slices at different positions of *Gallotia* mandibles in order to show differences among extant and extinct species, but also in the case of the subadult specimen of *G. bravoana*. Slices are shown in anteroposterior direction in X-Y axis.

Gallotia bravoana (subadult):

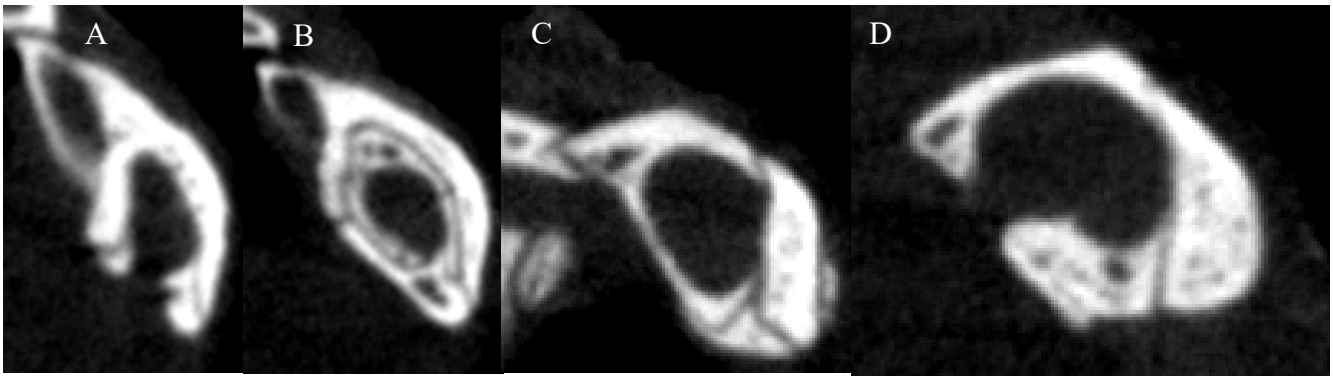
Anterior part of the skull (from left to right):

- a) At third tooth position.
- b) Just before splenial start.
- c) At eighth tooth position.



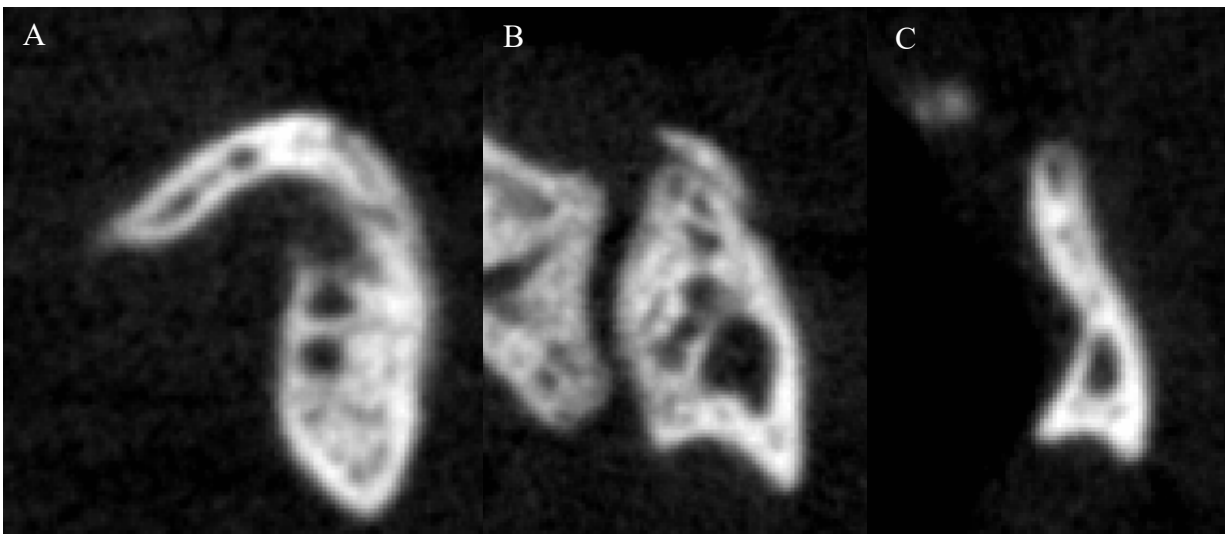
Medial part of the skull (from left to right):

- a) Just before surangular start.
- b) Last tooth position.
- c) Central point of the dorsal process of the coronoid.
- d) Just finished the coronoid.



Posterior part of the skull (from left to right):

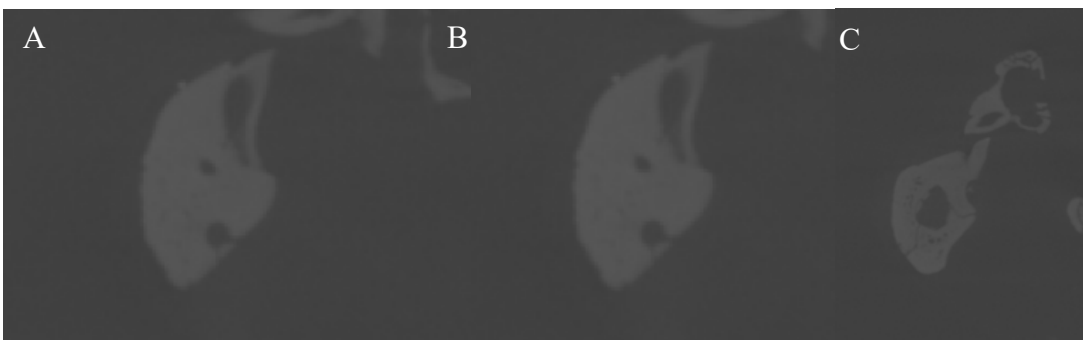
- a) Posterior border of the angular in lateral view.
- b) Central part of the glenoid fossa.
- c) Tympanic ridge.



Gallotia bravoana (adult):

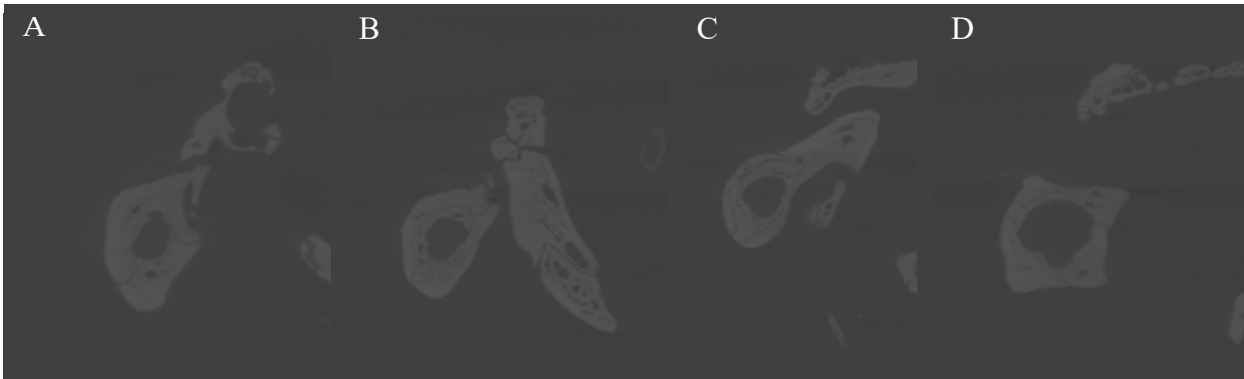
Anterior part of the skull (from left to right):

- a) At fourth tooth position.
- b) Just before splenial start.
- c) At fourteenth tooth position.



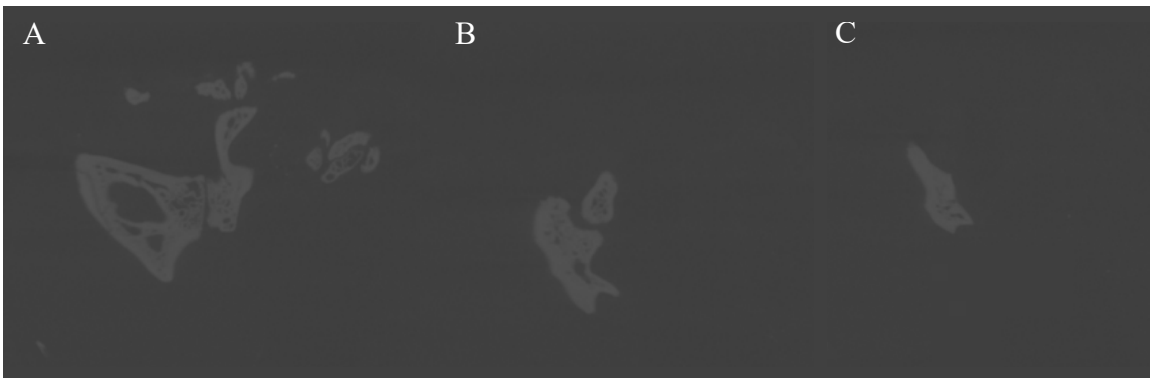
Medial part of the skull (from left to right):

- a) Just before surangular start.
- b) Last tooth position.
- c) Central point of the dorsal process of the coronoid.
- d) Just finished the coronoid.



Posterior part of the skull (from left to right):

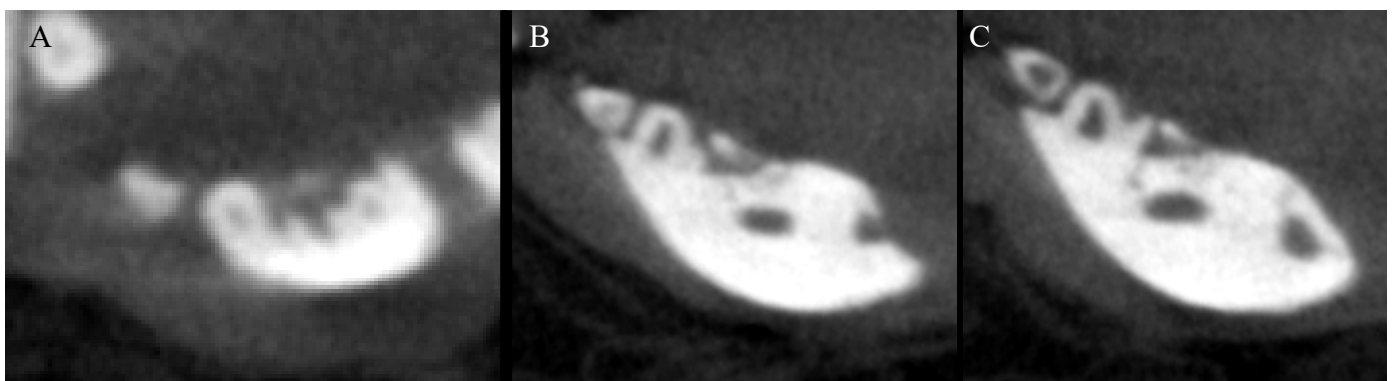
- a) Posterior border of the angular in lateral view.
- b) Central part of the glenoid fossa.
- c) Tympanic ridge.



Gallotia intermedia:

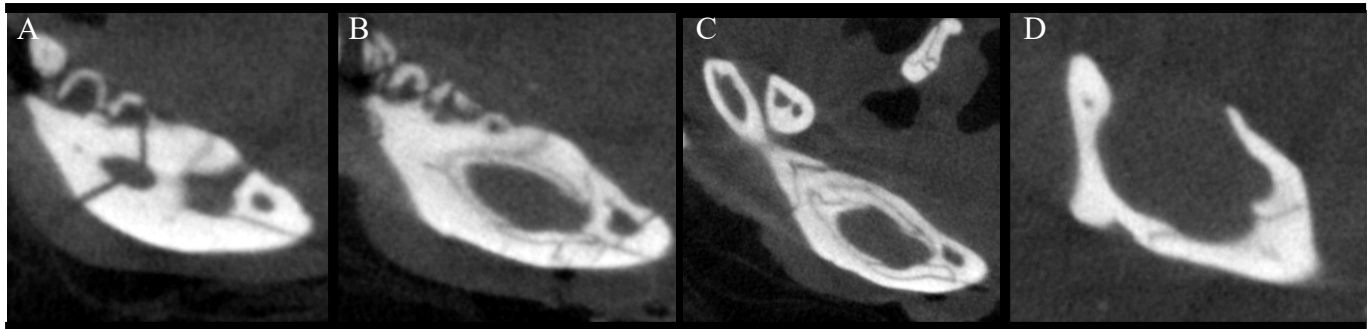
Anterior part of the skull (from left to right):

- a) At third tooth position.
- b) Just before splenial start.
- c) At fourteenth tooth position.



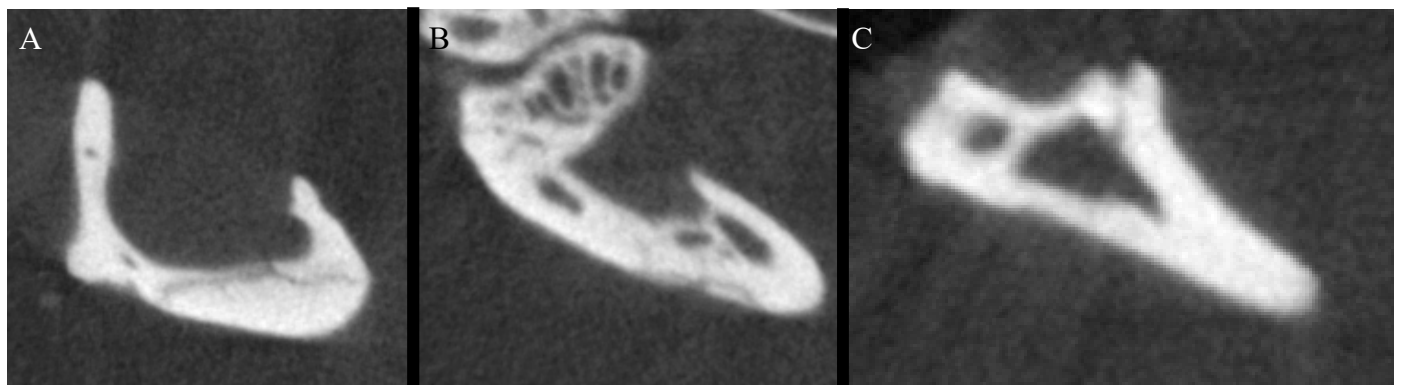
Medial part of the skull (from left to right):

- a) Just before surangular start (note that a fracture in the dentary can be observed).
- b) Last tooth position.
- c) Central point of the dorsal process of the coronoid.
- d) Just finished the coronoid.



Posterior part of the skull (from left to right):

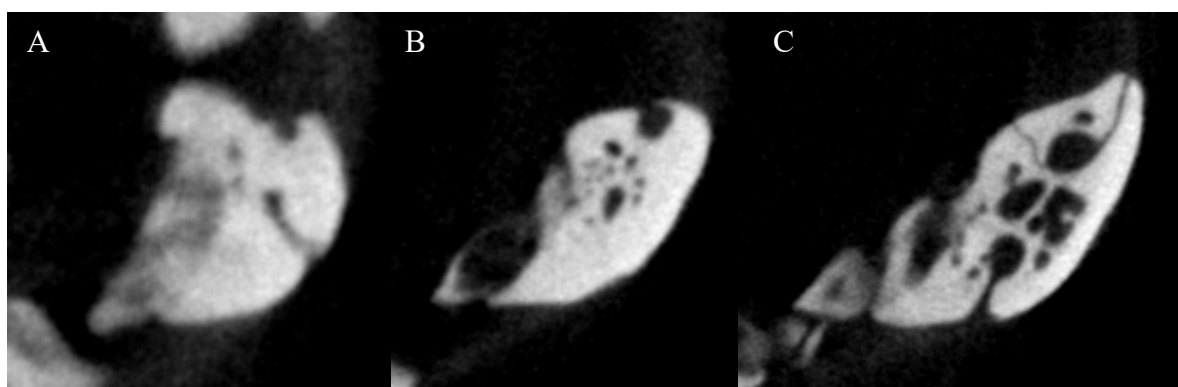
- a) Posterior border of the angular in lateral view.
- b) Central part of the glenoid fossa.
- c) Tympanic ridge.



Gallotia simonyi:

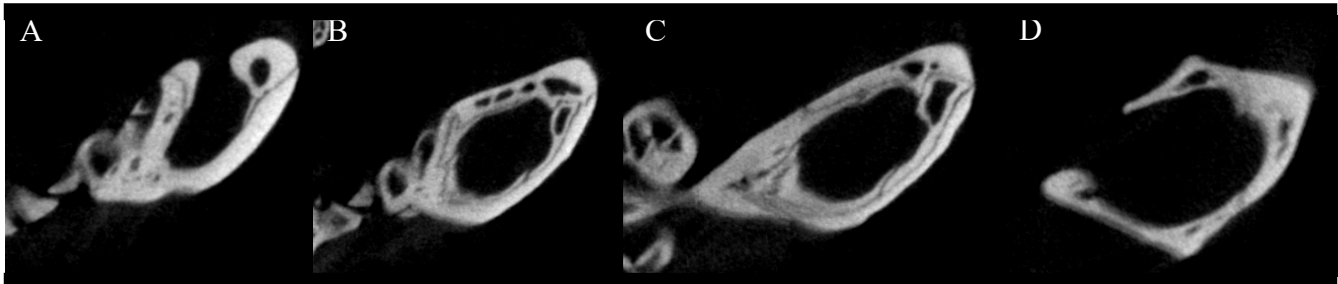
Anterior part of the skull (from left to right):

- a) At fourth tooth position.
- b) Just before splenial start.
- c) At fourteenth tooth position.



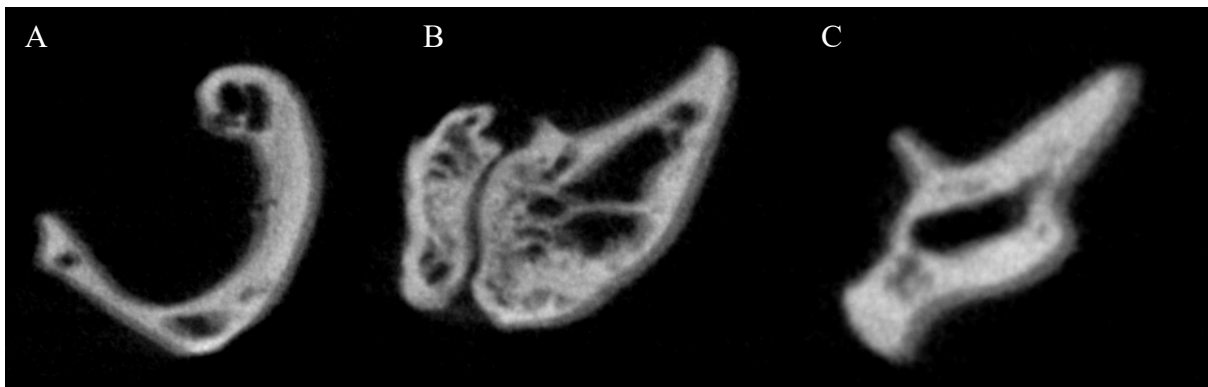
Medial part of the skull (from left to right):

- a) Central part of the anterior inferior alveolar foramina.
- b) Last tooth position.
- c) Central point of the dorsal process of the coronoid.
- d) Just finished the coronoid.



Posterior part of the skull (from left to right):

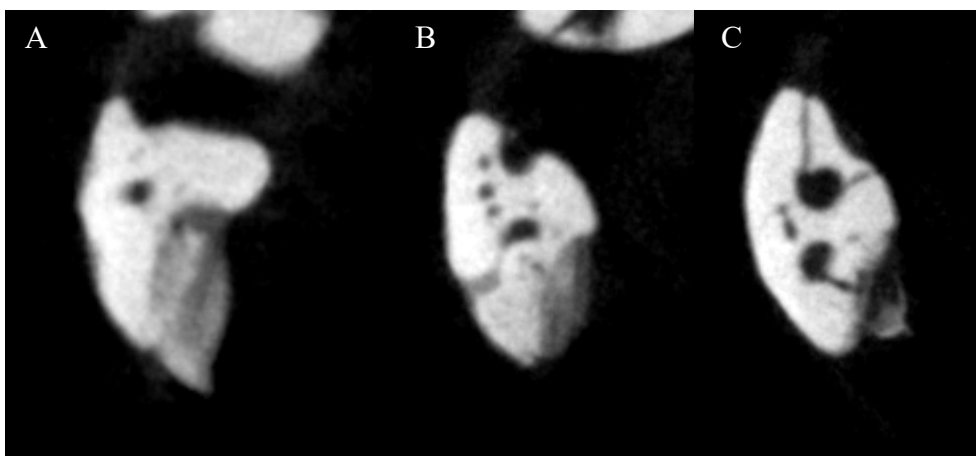
- a) Contact area of the surangular and angular within the mandibular fossa.
- b) Central part of the glenoid fossa.
- c) Tympanic ridge.



Gallotia stehlini:

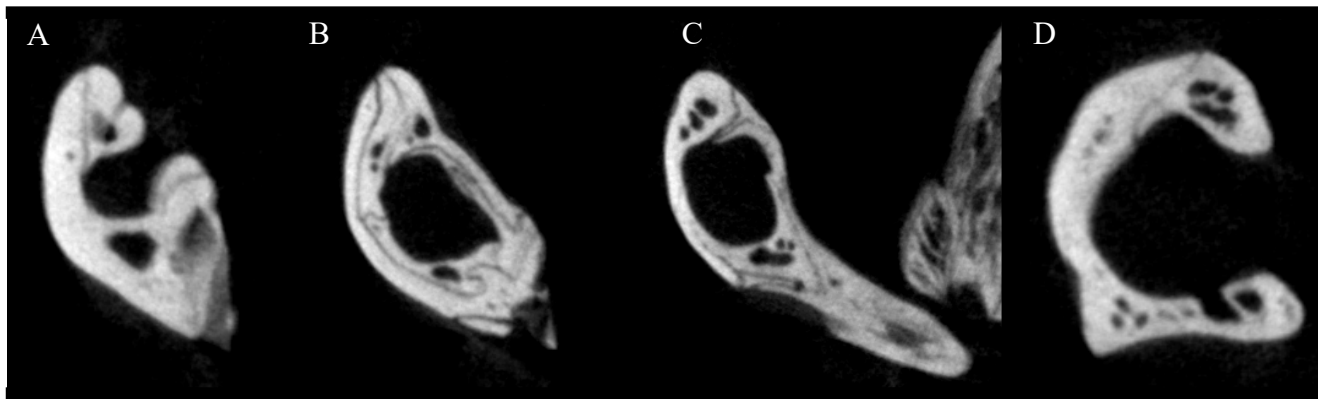
Anterior part of the skull (from left to right):

- a) At fourth tooth position.
- b) Just before splenial start.
- c) At fourteenth tooth position.



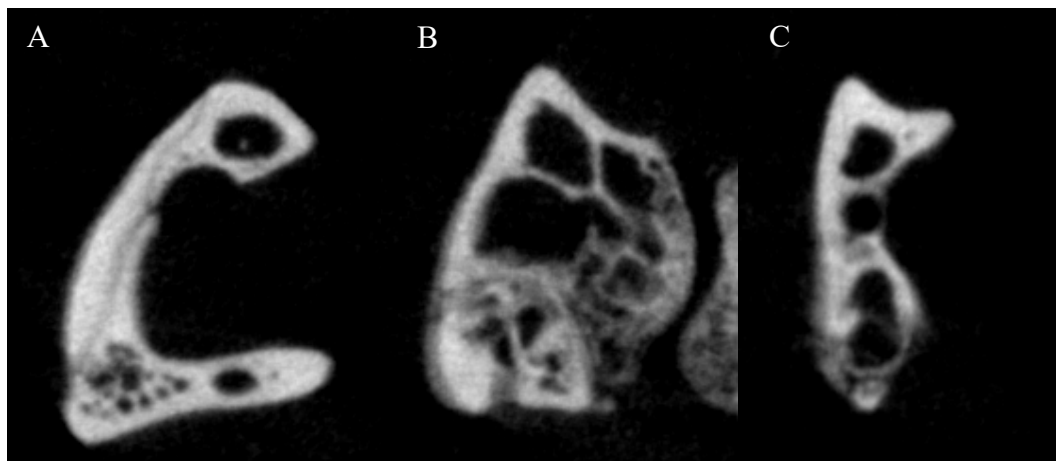
Medial part of the skull (from left to right):

- a) Central part of the anterior inferior alveolar foramina.
- b) Last tooth position.
- c) Central point of the dorsal process of the coronoid.
- d) Just finished the coronoid.



Posterior part of the skull (from left to right):

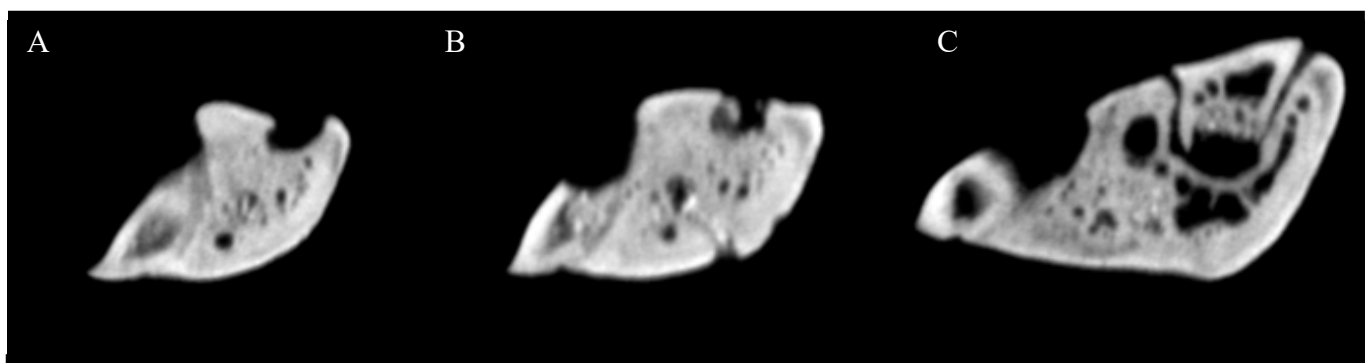
- a) Contact area of the surangular and angular within the mandibular fossa.
- b) Central part of the glenoid fossa.
- c) Tympanic ridge.



Gallotia goliath:

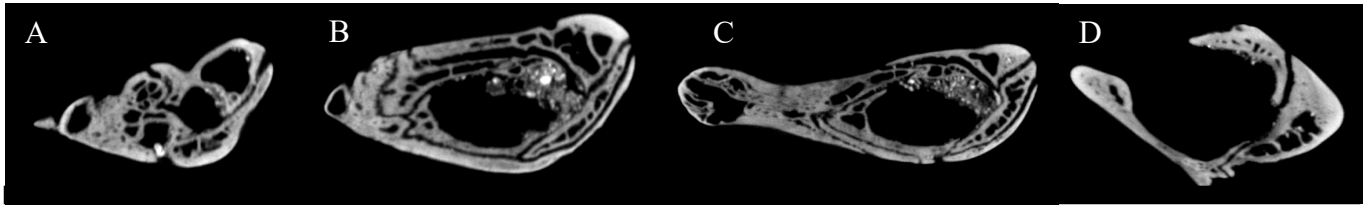
Anterior part of the skull (from left to right):

- a) At fourth tooth position.
- b) Just before splenial start.
- c) At fourteenth tooth position.



Medial part of the skull (from left to right):

- a) Central part of the anterior inferior alveolar foramina.
- b) Last tooth position.
- c) Central point of the dorsal process of the coronoid.
- d) Just finished the coronoid.



Posterior part of the skull (from left to right):

- a) Contact area of the surangular and angular within the mandibular fossa.
- b) Central part of the glenoid fossa.
- c) Tympanic ridge.

