

# Prognostic implications and alterations in left atrial deformation following transcatheter aortic valve implantation

Steele C. Butcher <sup>1,2†</sup>, Kensuke Hirasawa <sup>1,3†</sup>, Maria Chiara Meucci<sup>1,4</sup>, Jan Stassen <sup>1,5</sup>, Jurrien H. Kuneman<sup>1</sup>, Ana Rita Pereira<sup>1,6</sup>, Frank van der Kley <sup>1</sup>, Arend de Weger <sup>7</sup>, Philippe J. van Rosendael<sup>1</sup>, Nina Ajmone Marsan<sup>1</sup>, David Playford <sup>8</sup>, Victoria Delgado<sup>1,9</sup>, and Jeroen J. Bax <sup>1,10\*</sup>

<sup>1</sup>Department of Cardiology, Heart Lung Center, Leiden University Medical Center, Albinusdreef 2, 2300 RC Leiden, The Netherlands; <sup>2</sup>Department of Cardiology, Royal Perth Hospital, Perth, WA, Australia; <sup>3</sup>Department of Cardiovascular Medicine, Tokyo Medical and Dental University, Tokyo, Japan; <sup>4</sup>Department of Cardiovascular and Thoracic Sciences, Fondazione Policlinico Universitario A. Gemelli IRCCS, Catholic University of the Sacred Heart, Rome, Italy; <sup>5</sup>Department of Cardiology, Jessa Hospital Hasselt, Stadsomvaart 11, 3500 Hasselt, Belgium; <sup>6</sup>Department of Cardiology, Hospital Garcia de Orta, Almada, Portugal; <sup>7</sup>Department of Cardio-Thoracic Surgery, Leiden University Medical Center, 2300 RC Leiden, The Netherlands; <sup>8</sup>School of Medicine, University of Notre Dame, Fremantle, WA, Australia; <sup>9</sup>Heart Institute, Hospital University Germans Trias i Pujol, Badalona, Spain; and <sup>10</sup>Heart Center, University of Turku and Turku University Hospital, Turku, Finland

Received 18 March 2024; revised 10 June 2024; accepted 1 July 2024; online publish-ahead-of-print 10 July 2024

## Aims

To evaluate the prognostic implications of the left atrial reservoir strain–defined diastolic dysfunction (LARS-DD) grade in patients undergoing transcatheter aortic valve implantation (TAVI) for severe aortic stenosis (AS) and to determine whether post-TAVI LARS was more closely associated with new-onset atrial fibrillation than pre-TAVI LARS.

## Methods and results

Pre-TAVI LARS-DD was evaluated by speckle-tracking echocardiography and was assigned as Grade 0 to 1 (LARS  $\geq$ 24%), Grade 2 (LARS 19–24%), and Grade 3 (LARS <19%). Patients were followed up for the primary endpoint of all-cause mortality from the date of TAVI. For the secondary endpoint, patients with pre- and post-TAVI LARS measurements and no history of atrial fibrillation were evaluated for the occurrence of new-onset atrial fibrillation. A total of 601 patients [median age 81 (76–85) years, 53% males] were included. Overall, 169 patients (28%) were LARS-DD Grade 0/1, 96 patients (16%) were LARS-DD Grade 2, and 336 (56%) were LARS-DD Grade 3. Over a median follow-up of 40 (interquartile range 26–58) months, a total of 258 (43%) patients died. In a comprehensive multivariable Cox regression model, the LARS-DD grade was independently associated with all-cause mortality [adjusted hazard ratio (HR) 1.28 per one-grade increase, 95% confidence interval (CI) 1.07–1.53,  $P = 0.007$ ]. For the secondary endpoint of new-onset atrial fibrillation, a total of 285 patients were evaluated. Post-TAVI LARS (subdistributional HR 1.14 per 1% <20%, 95% CI 1.05–1.23,  $P = 0.0009$ ), but not pre-TAVI LARS ( $P = 0.93$ ), was independently associated with new-onset atrial fibrillation.

## Conclusion

An increased LARS-DD grade was independently associated with long-term post-TAVI survival in patients with severe AS. Post-TAVI LARS was closely related to the occurrence of new-onset atrial fibrillation.

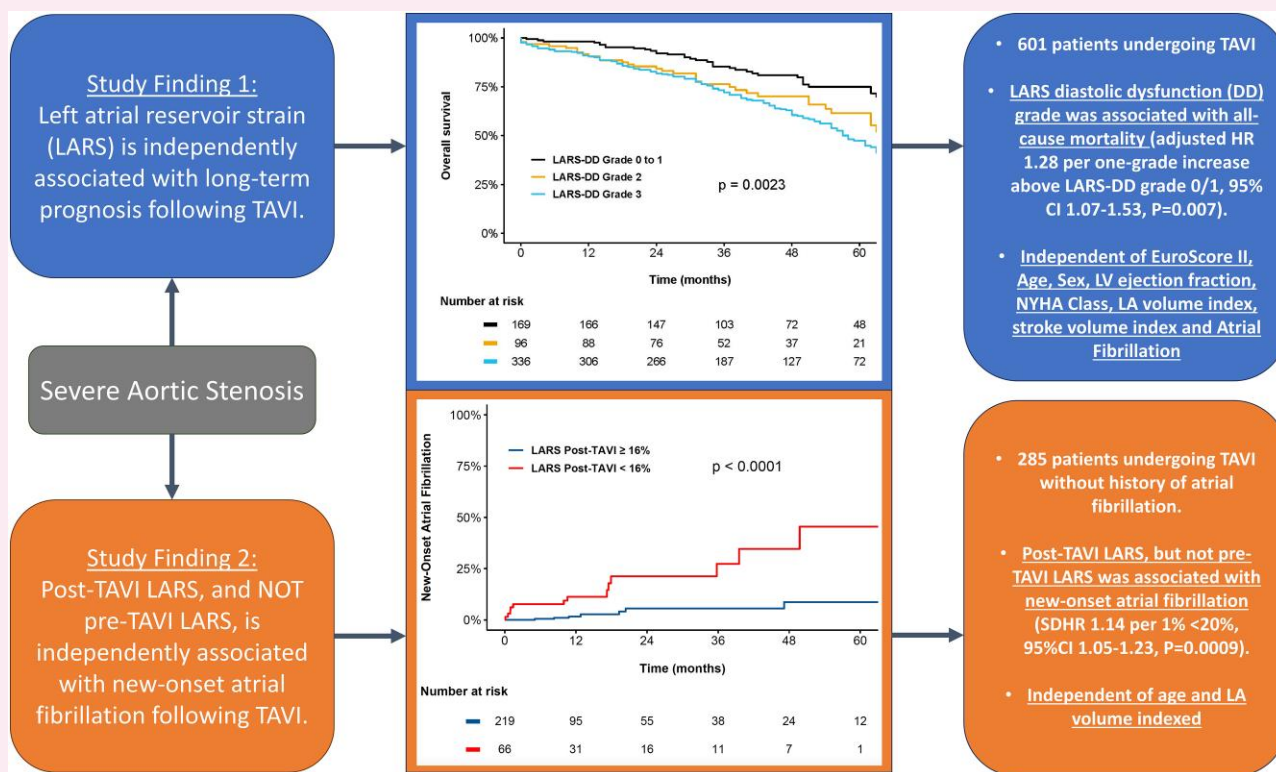
\* Corresponding author. E-mail: [j.j.bax@lumc.nl](mailto:j.j.bax@lumc.nl)

† These authors contributed equally to this work.

© The Author(s) 2024. Published by Oxford University Press on behalf of the European Society of Cardiology.

This is an Open Access article distributed under the terms of the Creative Commons Attribution-NonCommercial License (<https://creativecommons.org/licenses/by-nc/4.0/>), which permits non-commercial re-use, distribution, and reproduction in any medium, provided the original work is properly cited. For commercial re-use, please contact [reprints@oup.com](mailto:reprints@oup.com) for reprints and translation rights for reprints. All other permissions can be obtained through our RightsLink service via the Permissions link on the article page on our site—for further information please contact [journals.permissions@oup.com](mailto:journals.permissions@oup.com).

## Graphical Abstract



## Keywords

left atrial strain • TAVI • aortic stenosis • diastolic dysfunction • outcome

## Introduction

Severe aortic stenosis (AS) is an important cause of morbidity and mortality worldwide, although it remains highly amenable to treatment with surgical aortic valve repair or transcatheter aortic valve implantation (TAVI).<sup>1,2</sup> Current guidelines recommend intervention in patients with symptoms or impaired left ventricular (LV) systolic function [LV ejection fraction (EF) <50%].<sup>3,4</sup> However, LV diastolic dysfunction is highly prevalent and typically precedes symptoms and LV systolic dysfunction in patients with severe AS,<sup>5</sup> and the identification of worse diastolic function could be used to improve patient risk stratification, prognostication, or selection for intervention.<sup>6</sup>

Previously, a more sensitive evaluation of LV diastolic dysfunction severity through the quantification of left atrial reservoir strain (LARS), a parameter of left atrial (LA) deformation, was proposed, termed LARS-defined diastolic dysfunction (LARS-DD) grading.<sup>7</sup> In severe AS, due to chronic LV pressure overload, it is likely that pre-procedural impairment of LA deformation primarily reflects LV diastolic dysfunction, LV myocardial fibrosis, and elevated LV filling pressures, which may be associated with poor outcome following TAVI.<sup>6</sup> However, until now, only several small studies have evaluated the prognostic implications of LARS in patients with severe AS undergoing TAVI.<sup>8-12</sup>

Furthermore, following TAVI and the alleviation of LV pressure overload, it is probable that impaired post-TAVI LARS more closely reflects intrinsic LA dysfunction. Therefore, we hypothesized that post-TAVI LARS, rather than pre-TAVI LARS, would predict the new onset of atrial fibrillation and facilitate the identification of underlying atrial cardiomyopathy or intrinsic LA dysfunction.

Therefore, this study aimed to: (i) evaluate the association between pre-TAVI LARS-DD grade and post-procedural survival in patients undergoing TAVI for severe AS and (ii) examine the hypothesis that post-TAVI LARS is more closely associated with new-onset atrial fibrillation than pre-TAVI assessment of LA deformation.

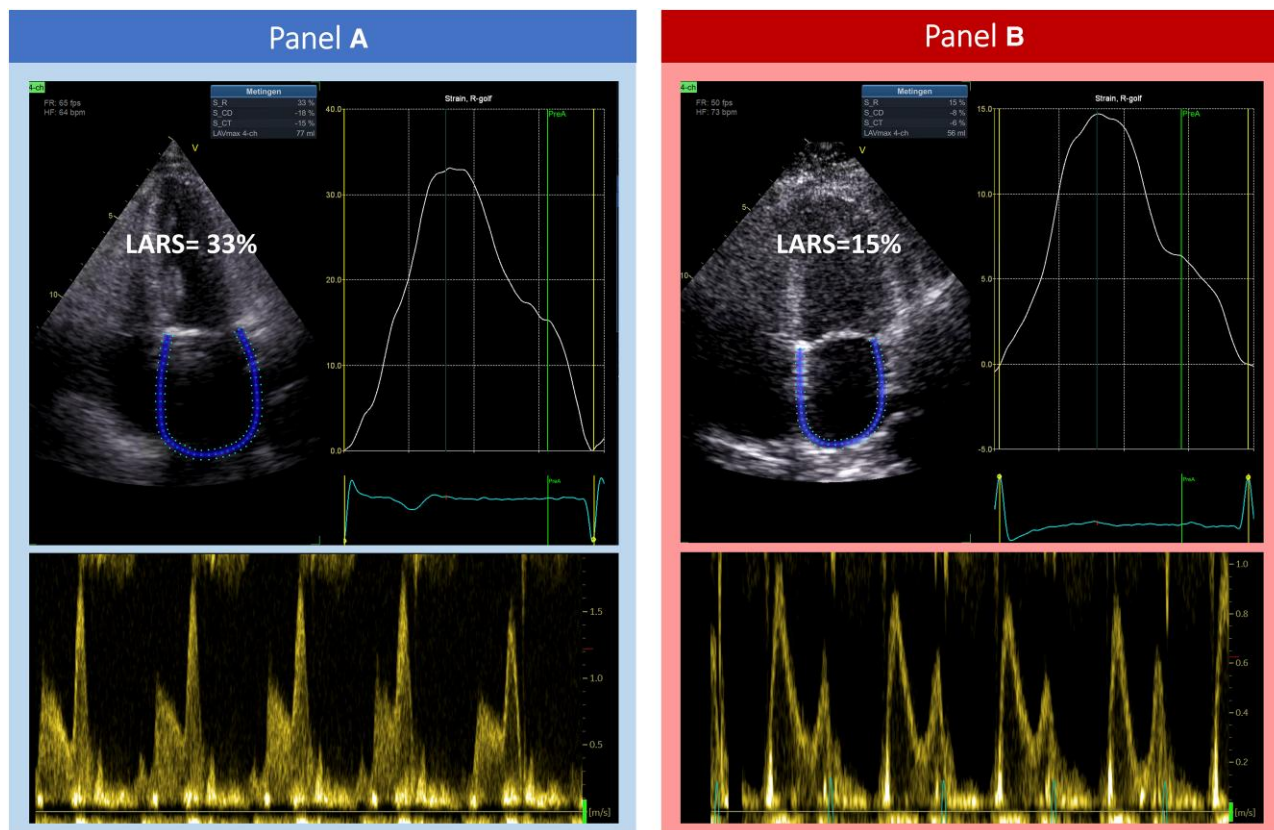
## Methods

## Study population

Patients with severe AS who underwent transfemoral TAVI at the Leiden University Medical Center between November 2007 and December 2019 were selected from the departmental echocardiographic database. Patients who underwent valve-in-valve TAVI, or in whom two-dimensional speckle-tracking analysis was not feasible due to inadequate tracking (*n* = 72), were excluded. Patient demographic and clinical data were obtained from the departmental electronic medical record (EPD-vision; Leiden University Medical Centre, Leiden, The Netherlands), and included demographic characteristics, cardiovascular risk factors, EuroSCORE II, New York Heart Association (NYHA) functional class, estimated glomerular filtration rate (eGFR), haemoglobin, and comorbidities. The institutional review board of the Leiden University Medical Centre waived the requirement for written patient informed consent as this study involved the retrospective analysis of clinically acquired data. This investigation conforms to the principles outlined in the Declaration of Helsinki. The data that support the findings of this study are available on reasonable request to the corresponding author.

## Echocardiography

Comprehensive transthoracic echocardiography was performed by qualified personnel as a component of routine clinical practice, using an E9 or an E95



**Figure 1** A demonstration of the acquisition of LARS in patients undergoing TAVI for severe aortic stenosis, with left atrial strain curves and corresponding transmitral pulsed wave Doppler flow. (A) A patient with Grade 0/1 LARS-DD (LARS 33%), who survived at long-term follow-up. (B) A patient with Grade 3 LARS-DD (LARS 15%). This patient did not survive at long-term follow-up. LARS, left atrial reservoir strain; LARS-DD, left atrial reservoir strain diastolic dysfunction; TAVI, transcatheter aortic valve implantation.

ultrasound system (General Electric Vingmed Ultrasound, Horten, Norway) with patients at rest in the left lateral decubitus position. Electrocardiogram (ECG)-triggered echocardiographic data were stored digitally in a cine-loop format for offline analysis (EchoPAC Version 203, 204, General Electric Vingmed Ultrasound). Measurements were performed by four personnel with at least 2 years of experience in the evaluation of LA strain by speckle-tracking echocardiography. Echocardiographic images used for the evaluation of post-TAVI LA deformation were acquired at ~1 month following TAVI, as per institutional protocol. AS severity was evaluated according to peak aortic jet velocity, mean pressure gradient, and aortic valve area.<sup>13</sup> Aortic and mitral regurgitation (MR) severity were graded accordingly as none, mild, moderate, or severe, using a multi-parametric approach, as per guideline recommendations.<sup>14</sup> LV end-diastolic and end-systolic volumes were measured using planimetry in apical two- and four-chamber views. LVEF was subsequently calculated using the Simpson biplane method, while LV mass was quantified using a two-dimensional linear approach.<sup>15</sup> LA volume was measured on apical two- and four-chamber views using the biplane method and was indexed for body surface area. Diastolic dysfunction was graded utilizing a multi-parametric method, as per guideline recommendations.<sup>16</sup> All other standard measurements were performed according to the American Society of Echocardiography and European Association of Cardiovascular Imaging guidelines.<sup>15</sup>

### Speckle-tracking echocardiography

LARS was measured on an apical four-chamber view with the onset of the QRS complex used as the zero-reference point (R–R gating), according to guideline

recommendations<sup>17</sup> (Figure 1). The endocardial border of the LA was manually traced when it was at its minimum volume following atrial contraction. Automatic tracking of the LA wall by the software was visually verified and corrected by adjusting the region of interest or the width of the contour, ensuring appropriate capture of LA motion. LARS was estimated from the first peak of the LA strain curve, immediately prior to mitral valve opening, using LA end systole as reference. LV global longitudinal strain (GLS) was measured from apical two-, three-, and four-chamber views, according to guideline recommendations.<sup>17</sup>

### Follow-up

Patients were followed up for the primary endpoint of all-cause mortality from the date of TAVI. Mortality data were collected through the Social Security Death Index or by medical record review and were complete for all patients. The secondary endpoint of the study was the occurrence of new-onset atrial fibrillation from the date of the post-TAVI echocardiogram. Atrial fibrillation was documented on a standard 12-lead ECG, defined as irregular R–R intervals in the absence of distinct repeating P waves and irregular atrial activation, lasting for at least 30 s or during the entire 12-lead ECG.<sup>18</sup>

### Statistical analysis

Categorical variables are expressed as numbers and percentages, while continuous variables are presented as median and interquartile range (IQR). Differences between groups were compared using the Pearson  $\chi^2$  test for categorical variables and the Kruskal–Wallis test for continuous variables. Multiple comparisons were tested using Bonferroni's correction.

**Table 1** Patient characteristics according to the LARS-DD grade

Variable	Overall n = 601	LARS-DD Grade 0/1 n = 169	LARS-DD Grade 2 n = 96	LARS-DD Grade 3 n = 336	P-value
Age, years	81 (76–85)	81 (76–84)	81 (77–85)	81 (77–85)	0.30
Male sex	316 (53%)	83 (49%)	54 (56%)	179 (53%)	0.50
BMI, kg/m <sup>2</sup>	26.1 (23.9–28.7)	26.7 (24.3–29.3)	25.4 (23.9–28.6)	26.0 (23.8–28.6)	0.20
Systolic blood pressure, mmHg	139 (123–152)	144 (129–155)	145 (125–156)	136 (120–150)***	0.003
Diastolic blood pressure, mmHg	67 (60–76)	66 (60–75)	68 (62–78)	68 (60–75)	0.71
Hypertension	448 (75%)	131 (78%)	79 (82%)	238 (71%)	0.057
Dyslipidaemia	356 (60%)	104 (62%)	61 (64%)	191 (57%)	0.43
Diabetes mellitus	174 (29%)	49 (29%)	26 (27%)	99 (30%)	0.89
Previous stroke/TIA	93 (18%)	25 (18%)	12 (15%)	56 (20%)	0.58
Coronary artery disease	351 (59%)	94 (56%)	58 (60%)	199 (59%)	0.70
History of atrial fibrillation	163 (27%)	10 (6.0%)	14 (15%)	139 (41%)***	<0.001
COPD	102 (17%)	24 (15%)	20 (21%)	58 (18%)	0.40
NYHA Class III or IV	335 (56%)	77 (46%)	51 (53%)	207 (62%)*	0.002
Beta-blocker	347 (58%)	100 (60%)	50 (52%)	197 (59%)	0.44
ACEi or ARB	317 (53%)	89 (53%)	55 (57%)	173 (52%)	0.62
Diuretics	324 (54%)	69 (41%)	50 (52%)	205 (61%)*	<0.001
Statin	377 (63%)	114 (68%)	64 (67%)	199 (59%)	0.13
eGFR, mL/min/1.73 m <sup>2</sup>	64 (49–81)	68 (51–83)	67 (49–81)	62 (48–77)	0.13
Haemoglobin, mmol/L	7.90 (7.10–8.50)	7.85 (6.90–8.40)	7.70 (7.00–8.30)	7.90 (7.20–8.65)	0.035

The values are expressed as median (IQR) and n (%).

ACEi, angiotensin-converting enzyme inhibitor; ARB, angiotensin receptor blocker; BMI, body mass index; COPD, chronic obstructive pulmonary disease; eGFR, estimated glomerular filtration rate; LARS-DD, left atrial reservoir strain diastolic dysfunction; NYHA, New York Heart Association; TIA, transient ischaemic attack.

\*P < 0.05 vs. Group I.

\*\*P < 0.05 vs. Group II.

To examine the nature of the association between LARS and the hazard ratio (HR) change for the primary and secondary endpoints, restricted cubic spline curves were fitted. In addition, to evaluate the prognostic importance of the pre-TAVI LARS-DD grade in severe AS, patients were divided into three groups, as previously described<sup>7</sup>: LARS-DD Grade 0 to 1 (LARS  $\geq$ 35 and 24–35%, respectively), Grade 2 (LARS 19–24%), and Grade 3 (LARS <19%). To account for missing data, multiple imputations by predictive mean matching using a chained-equation approach were performed to generate 100 imputed data sets.<sup>19</sup> The results of the survival analyses were obtained by averaging the parameter estimates across the multiple imputed data sets using Rubin's rules to combine the standard errors.<sup>20</sup> The cumulative incidence of all-cause mortality according to the LARS-DD grade was calculated using the Kaplan–Meier method and compared using the log-rank test. Univariable Cox proportional hazards regression analysis was used to evaluate the association between the LARS-DD grade and the endpoint of all-cause mortality. Multivariable Cox proportional hazards regression analyses were performed using two levels of adjustment. First, adjustment was made for baseline clinical and biochemical characteristics such as age, sex, EuroSCORE II, NYHA Class III–IV symptoms, eGFR, haemoglobin (core model). Second, further adjustment was made for prognostically important echocardiographic factors and cardiac rhythm such as LVEF, LA volume index, LV stroke volume index, and atrial fibrillation (comprehensive model).

To evaluate the association of pre- and post-TAVI LARS with the occurrence of new-onset atrial fibrillation, univariable Cox proportional hazards regression analyses were performed. The Kaplan–Meier method was used to compare the cumulative incidence of the occurrence of new-onset atrial fibrillation according to pre- and post-TAVI LARS divided by thresholds

estimated from the fitted spline curves. Multivariable Cox regression analyses were performed for pre- and post-TAVI LARS fitted with linear spline terms (to reduce variance and minimizing model overfitting), adjusting for a limited number of predefined variables (age and LA volume index) to minimize the risk of model overfitting.<sup>21</sup> In addition, to account for the competing risk of death, a multivariable Fine–Gray regression analysis was performed.<sup>22</sup>

Hazard ratio and 95% confidence intervals (CIs) were reported for each Cox regression model, while subdistributional HRs (SDHRs) and 95% CI were reported for the Fine–Gray regression analysis. The proportional hazards assumption was verified through the evaluation of scaled Schoenfeld residuals. All tests were two-sided and P-values <0.05 were considered statistically significant. Statistical analysis was performed using SPSS version 25.0 (IBM Corporation, Armonk, NY, USA) and R version 4.1.1 (R Foundation for Statistical Computing, Vienna, Austria).

## Results

### Patient characteristics

A total of 601 patients with severe AS were included, with LARS evaluation feasible in 89% (601/673) patients; see [Supplementary data online, Figure S1](#). The median age of the population was 81 (IQR 76–85) years and 53% were males. Overall, 42 patients (7%) had LARS-DD Grade 0, 127 patients (21%) had LARS-DD Grade 1, 96 patients (16%) showed LARS-DD Grade 2, and 336 (56%) had LARS-DD Grade 3. Patients with a higher LARS-DD grade were more likely to have previous or current atrial fibrillation and to present with NYHA Class III or IV symptoms. [Table 1](#) summarizes the baseline clinical characteristics of the population.

**Table 2** Echocardiographic characteristics according to the LARS-DD grade

Variable	Overall n = 601	LARS-DD Grade 0/1 n = 169	LARS-DD Grade 2 n = 96	LARS-DD Grade 3 n = 336	P-value
LV end-diastolic diameter index, mm/m <sup>2</sup>	24.9 (22.5–28.0)	24.3 (22.3–26.8)	25.1 (22.5–28.1)	25.1 (22.5–28.7)	0.068
LV end-systolic diameter index, mm/m <sup>2</sup>	17.3 (14.1–20.4)	15.5 (13.4–19.0)	17.1 (14.3–21.1)	17.7 (14.8–21.5)*	<0.001
LV mass index, g/m <sup>2</sup>	121 (100–147)	112 (91–133)	122 (103–142)	126 (104–151)*	<0.001
LV end-diastolic volume index, mL/m <sup>2</sup>	47 (37–60)	44 (35–55)	49 (39–61)	47 (38–64)*	0.019
LV end-systolic volume index, mL/m <sup>2</sup>	19 (13–30)	16 (12–23)	19 (14–28)*	21 (14–36)*	<0.001
LVEF, %	58 (48–65)	63 (56–69)	60 (50–66)*	55 (43–62)***	<0.001
Left atrial volume index, mL/m <sup>2</sup>	40 (31–51)	33 (26–39)	35 (27–44)	47 (37–58)***	<0.001
Stroke volume index, mL/m <sup>2</sup>	38 (31–47)	43 (35–51)	39 (32–47)	35 (29–43)***	<0.001
Aortic peak velocity, m/s	4.00 (3.48–4.44)	4.09 (3.66–4.51)	4.14 (3.64–4.65)	3.90 (3.36–4.36)***	0.001
Aortic mean pressure gradient, mmHg	41 (31–52)	43 (34–54)	42 (35–56)	39 (30–49)***	0.002
Aortic valve area, cm	0.78 (0.62–0.93)	0.83 (0.70–0.96)	0.73 (0.59–0.93)*	0.76 (0.60–0.92)*	0.001
Significant aortic regurgitation	95 (16%)	15 (9.2%)	16 (17%)	64 (19%)*	0.016
Mean mitral pressure gradient, mmHg	2.22 (1.58–3.32)	2.05 (1.51–2.85)	2.02 (1.61–3.13)	2.35 (1.60–3.55)*	0.008
Significant mitral regurgitation	126 (21%)	16 (9.8%)	8 (8.3%)	102 (31%)*	<0.001
Average e' velocity, cm/s	5.09 (4.00–7.00)	5.00 (4.00–7.00)	5.00 (4.00–6.00)	6.00 (4.00–7.00)	0.070
E/e'	16 (12–22)	13 (10–18)	14 (11–19)	17 (13–26)***	<0.001
Tricuspid regurgitation maximal velocity, m/s	2.65 (2.36–3.01)	2.55 (2.22–2.73)	2.52 (2.26–2.82)	2.78 (2.48–3.18)***	<0.001
Mitral inflow E-wave velocity, cm/s	87 (66–114)	70 (56–87)	76 (58–93)	103 (81–126)***	<0.001
Mitral inflow A-wave velocity, cm/s	98 (76–123)	102 (87–122)	99 (80–124)	94 (65–124)	0.033
Mitral inflow E/A ratio	0.77 (0.59–1.15)	0.66 (0.57–0.84)	0.69 (0.57–0.89)	1.04 (0.69–1.47)***	<0.001
Conventional multi-parametric diastolic dysfunction grading <sup>a</sup>					<0.001
Grade 1 diastolic dysfunction	198 (45%)	104 (65%)	51 (59%)	43 (22%)	
Grade 2 diastolic dysfunction	205 (47%)	53 (33%)	35 (41%)	117 (60%)	
Grade 3 diastolic dysfunction	37 (8.4%)	2 (1.3%)	0 (0%)	35 (18%)	
LV global longitudinal strain (%)	−13.6 (−10.7 to −16.4)	−16.2 (−13.4 to −18.3)	−14.6 (−11.7 to −17.6)	−12.2 (−9.2 to −14.7)	<0.001

The values are expressed as median (IQR) and n (%).

LARS-DD, left atrial reservoir strain diastolic dysfunction; LV, left ventricle; LVEF, left ventricular ejection fraction.

<sup>a</sup>In subset of patients without atrial fibrillation.

\*P < 0.05 vs. Group I.

\*\*P < 0.05 vs. Group II.

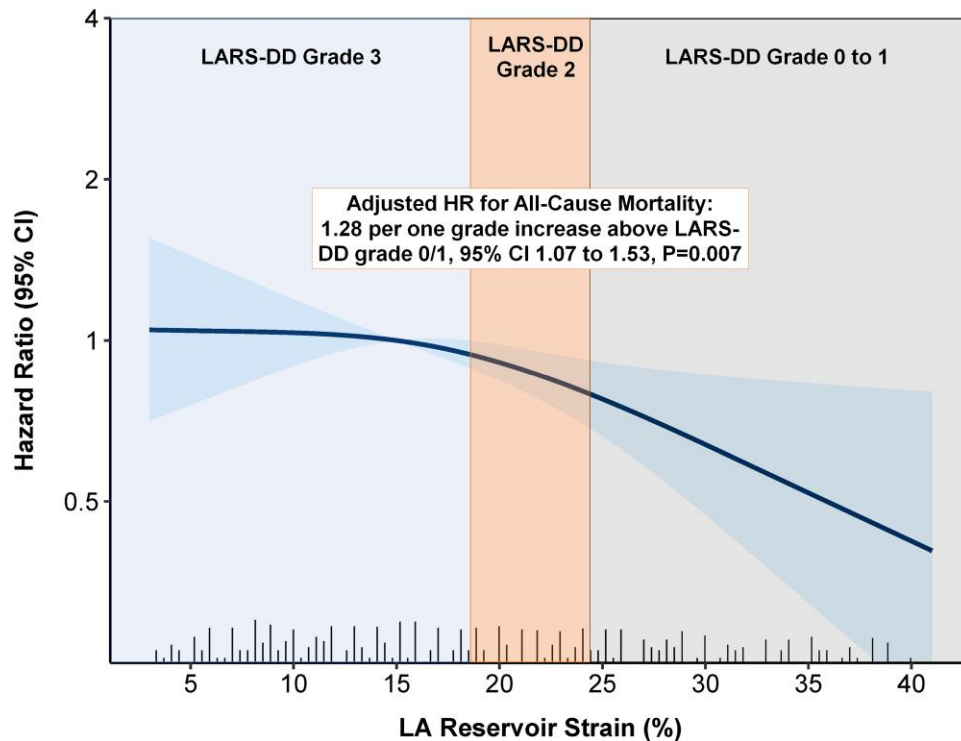
## Echocardiographic characteristics

The echocardiographic characteristics of the population are summarized in Table 2. The median LARS was 17% (IQR 10–24%). Patients with a higher LARS-DD grade had increased LV dimensions, increased LV mass, lower LVEF, and reduced LV stroke volume index. In addition, LA dimensions were increased, the aortic valve area was reduced, and there was a higher prevalence of significant MR in patients with a higher LARS-DD grade. Other echocardiographic parameters related to LV diastolic function (*E/e'*, tricuspid regurgitation maximum velocity, and *E/A* ratio) were all worse in patients with a higher LARS-DD grade.

## Association between LARS-DD grade and all-cause mortality

Over a median follow-up of 40 (IQR 26–58) months, a total of 258 (43%) patients died. Spline curve analyses were performed to investigate the association between values of LARS and all-cause mortality (Figure 2). Overall post-procedural survival at 5 years was markedly different

according to the LARS-DD grade: 75% for patients with LARS-DD Grade 0 or 1 vs. 62% for patients with LARS-DD Grade 2 and 48% for patients of LARS-DD Grade 3 (*P* = 0.002, Figure 3). In addition, LARS-DD grade was significantly associated with all-cause mortality on univariable Cox regression analysis (HR 1.30 per one-grade increase above LARS-DD Grade 0/1, 95% CI 1.12–1.52, *P* = 0.0006). In the multivariable Cox regression proportional hazard core model adjusted for age, sex, EuroSCORE II and NYHA Class III–IV symptoms, LARS-DD grade remained associated with all-cause mortality (Table 3). In addition, in a comprehensive model with further adjustment for LVEF, atrial fibrillation, LA volume index, and LV stroke volume index, LARS-DD grade was independently associated with all-cause mortality (adjusted HR 1.28 per one-grade increase above LARS-DD Grade 0/1, 95% CI 1.07–1.53, *P* = 0.007). Even following adjustment for LV GLS, LARS-DD grade was significantly associated with all-cause mortality (adjusted HR 1.34 per one-grade increase above LARS-DD Grade 0/1, 95% CI 1.12–1.61, *P* = 0.002). In addition, in a comprehensive model, a similar association between LARS-DD grade and a combined endpoint of heart failure hospitalization and all-cause mortality was observed (adjusted HR 1.31 per



**Figure 2** The association between LARS and outcome in patients with severe AS undergoing TAVI. The panel demonstrates the adjusted HR of the LARS-DD grade for all-cause mortality in patients undergoing TAVI for severe AS. LARS-DD grading is superimposed over a spline curve showing the association between LARS and the HR for all-cause mortality. AS, aortic stenosis; HR, hazard ratio; LARS-DD, left atrial reservoir strain diastolic dysfunction; TAVI, transcatheter aortic valve implantation.

one-grade increase above LARS-DD Grade 0/1, 95% CI 1.10–1.56,  $P = 0.003$ ).

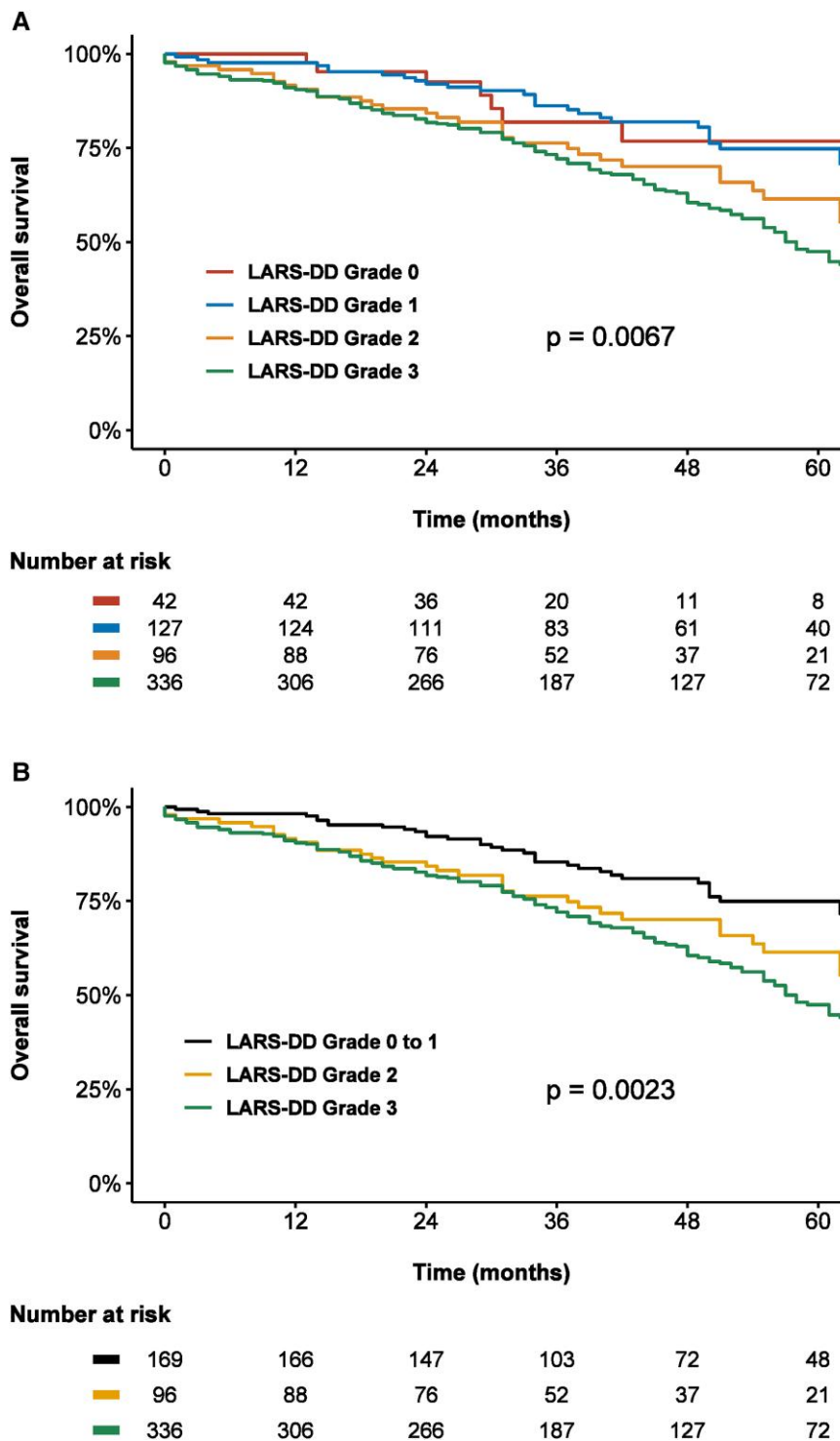
In a sensitivity analysis of the subgroup of patients without a history of atrial fibrillation, the LARS-DD grade remained associated with all-cause mortality in a comprehensive multivariable Cox regression model (adjusted HR 1.28 per one-grade increase above LARS-DD Grade 0/1, 95% CI 1.05–1.55,  $P = 0.014$ ). Further adjustment for multi-parametric diastolic dysfunction grading according to guideline recommendations yielded similar results (adjusted HR 1.32 per one-grade increase above LARS-DD Grade 0/1, 95% CI 1.06–1.53,  $P = 0.011$ ). Notably, guideline-directed classification of diastolic dysfunction grade was indeterminate in 55 patients. In patients without atrial fibrillation, there was no significant association between LA contractile strain ( $P = 0.26$ ) or A-wave velocity ( $P = 0.28$ ) and all-cause mortality following adjustment in a comprehensive model.

### Association between pre- and post-TAVI LA strain and new-onset atrial fibrillation

A total of 285 patients with pre- and post-TAVI LARS measurements, no history of atrial fibrillation, and clinical/ECG follow-up following the post-TAVI follow-up echocardiogram were evaluated for the occurrence of new-onset atrial fibrillation (see [Supplementary data online, Figure S2](#)). The median time from TAVI to follow-up echocardiogram was 31 (IQR 31–41) days. The estimated mean change in LARS was 1.31%, from 21.6% (95% CI 20.5–22.7%) pre-TAVI to 22.9% (95% CI 21.9–24.0%) post-TAVI ( $P = 0.015$ ). Over a median follow-up of 11.3 (IQR 10.8–23.7) months, a total of 21 (7.4%) patients experienced new-onset atrial fibrillation. Restricted cubic spline curve analysis was performed to investigate the association between values of pre- and

post-TAVI LARS and new-onset atrial fibrillation (see [Supplementary data online, Figures S3 and S4](#)). Following a plateau phase, a marked increase in the HR for new-onset atrial fibrillation was seen for values of post-TAVI LARS under 20%, although no strong association was observed between values of pre-TAVI LARS and new-onset atrial fibrillation. Subsequently, a cut-off of LARS of 16% was estimated from spline curve analysis for the purpose of Kaplan–Meier analyses. The estimated cumulative incidence of new-onset atrial fibrillation at 3 years was significantly higher for values of post-TAVI LARS <16% compared with values of post-TAVI LARS  $\geq 16\%$  (27.3 vs. 5.6%,  $P < 0.0001$ , [Figure 4](#)). In contrast, there was no significant difference observed between patients with pre-TAVI LARS <16% and pre-TAVI LARS  $\geq 16\%$  ( $P = 0.10$ , [Figure 4](#)). Likewise, on univariable Cox regression analysis, post-TAVI LARS (HR 1.14 per 1% < 20%, 95% CI 1.06–1.23,  $P = 0.0003$ ), but not pre-TAVI LARS (HR 1.04 per 1% < 20%, 95% CI 0.95–1.13,  $P = 0.40$ ), was related to the occurrence of new-onset atrial fibrillation ([Table 4](#)). Multivariable Cox regression analysis adjusting for age and LA volume index demonstrated that post-TAVI LARS remained independently associated with new-onset atrial fibrillation (adjusted HR 1.11, per 1% < 20%,  $P = 0.014$ ). To account for the competing risk of all-cause mortality, Fine–Gray analysis was performed, demonstrating results consistent with the Cox regression analyses. On multivariable Fine–Gray regression analysis adjusting for age and LA volume index, post-TAVI LARS (SDHR 1.14 per 1% < 20%, 95% CI 1.05–1.23,  $P = 0.0009$ ), but not pre-TAVI LARS (SDHR 1.00 per 1% < 20%, 95% CI 0.91–1.11,  $P = 0.93$ ) was associated with new-onset atrial fibrillation, even when accounting for the competing risk of death.

Consistent with the analysis of pre- and post-TAVI LARS, post-TAVI LA contractile strain (see [Supplementary data online, Figure S5](#)) was



**Figure 3** Kaplan–Meier curves demonstrating the association between LARS-DD grade and all-cause mortality according to (A) four LARS-DD groups and (B) three LARS-DD groups. An increased LARS-DD grade was associated with worse post-TAVI survival in patients with severe AS. LARS-DD, left atrial reservoir strain diastolic dysfunction.

independently associated with the occurrence of new-onset atrial fibrillation (adjusted HR 1.13 per 1% < 14%, 95% CI 1.01–1.26,  $P = 0.026$ ), while pre-TAVI LA contractile strain (see [Supplementary data online, Figure S6](#)) was not (adjusted HR 1.03 per 1% decrease, 95% CI 0.94–1.12,  $P = 0.55$ ).

## Discussion

In this study of 601 patients undergoing TAVI for severe AS, (i) LARS-DD was ubiquitous among patients undergoing TAVI with severe AS, with 93% demonstrating at least Grade 1 LARS-DD and 56%

**Table 3 Association between LARS-DD grade and all-cause mortality**

All-cause mortality n = 601	LARS-DD (per 1 grade increase) <sup>a</sup>	LARS-DD Grade 0/1 n = 169	LARS-DD Grade 2 n = 96	LARS-DD Grade 3 n = 336
Events/person-years		52/643	37/331	169/1181
Incidence rate, per 1000 person-years (95% CI)		80.88 (60.41–106.07)	111.70 (78.65–153.96)	143.16 (122.39–166.45)
Unadjusted HR (95% CI)	1.30 (1.12–1.52)	Reference	1.39 (0.91–2.12)	1.72 (1.26–2.35)
P-value for HR	0.0006		0.13	0.0007
HR (95% CI) adjusted for age, sex, EuroSCORE II, eGFR, haemoglobin, NYHA Class III–IV symptoms (core model)	1.29 (1.11–1.51)	Reference	1.39 (0.91–2.12)	1.69 (1.23–2.33)
P-value for adjusted HR	0.001		0.13	0.001
HR (95% CI) further adjustment for LVEF, AFib, LAVI, and LV SVi (comprehensive model)	1.28 (1.07–1.53)	Reference	1.40 (0.91–2.14)	1.65 (1.15–2.37)
P-value for adjusted HR	0.007		0.13	0.007

AFib, atrial fibrillation; eGFR, estimated glomerular filtration rate; HR, hazard ratio; LARS-DD, left atrial reservoir strain diastolic dysfunction; LAVI, left atrial volume indexed; LVEF, left ventricular ejection fraction; LV SVi, left ventricular stroke volume indexed; NYHA, New York Heart Association.

<sup>a</sup>Per one-grade increase above Grade 0/1.

classified as LARS-DD Grade 3, (ii) in a comprehensive multivariable analysis, an increased LARS-DD grade was independently associated with reduced long-term post-TAVI survival, and (iii) post-TAVI LARS, but not pre-TAVI LARS, was closely related to the occurrence of new-onset atrial fibrillation, likely reflecting intrinsic LA dysfunction.

### Association between left atrial deformation and post-TAVI survival in patients with severe AS

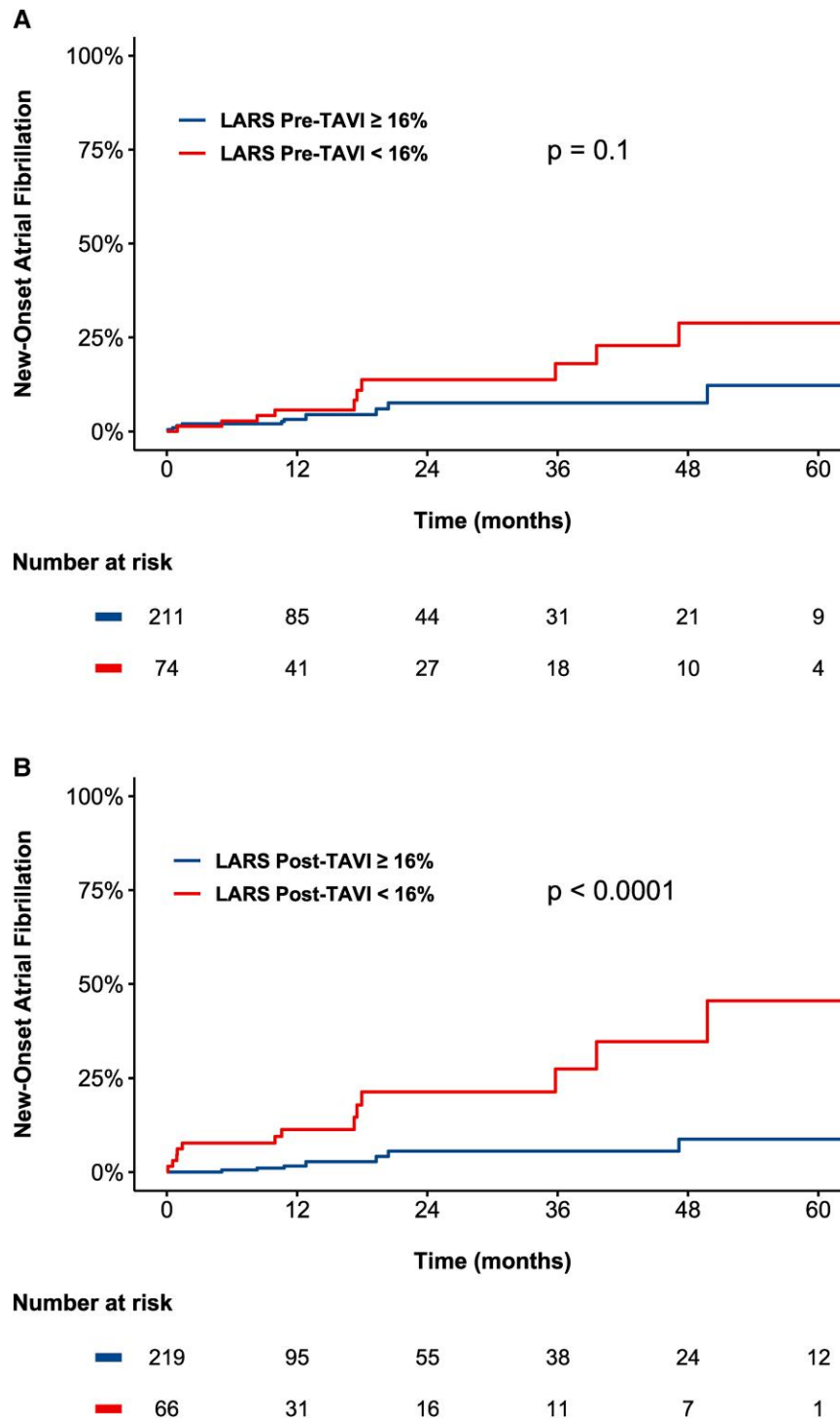
In the presence of LV diastolic dysfunction, the LA plays an important role in augmenting preload, modulating cardiac output, and buffering elevations in LV filling pressures.<sup>23</sup> Previously, Singh *et al.*<sup>7</sup> proposed a novel grading system of LV diastolic function based on values of LARS, demonstrating that LARS decreases in a stepwise fashion with worsening LV diastolic dysfunction. Subsequent studies have demonstrated the prognostic utility of LARS-DD grading in patients with hypertrophic cardiomyopathy and community-dwelling elderly adults without ischemic risk factors, although not yet in severe AS.<sup>24,25</sup> In severe AS, the presence of diastolic dysfunction is frequent due to impaired LV compliance, LV hypertrophy, concentric remodelling, and myocardial fibrosis<sup>6,26,27</sup> and is closely associated with the presence of symptoms.<sup>28</sup> Indeed, in the present study, 93% of patients demonstrated LV diastolic dysfunction by LARS-DD grading. Therefore, in patients with severe AS, prior to alleviation of pressure overload with TAVI and subsequent reverse remodelling, it could be hypothesized that impaired LARS primarily represents LV diastolic dysfunction and elevated filling pressures.

Overall, previous studies have demonstrated the prognostic value of diastolic dysfunction when using conventional Doppler evaluation of patients with severe AS, although with some conflicting results.<sup>16,26,27,29,30</sup> However, when substituted for conventional Doppler assessment, LARS appears to offer improved sensitivity for the detection of diastolic dysfunction and elevated filling pressures, in addition to reducing the frequency of indeterminate diastolic dysfunction grading.<sup>31</sup> Interestingly, no

large study has convincingly demonstrated the prognostic value of LARS in patients with severe AS, although clear prognostic utility has been demonstrated in patients with severe degenerative mitral regurgitation, hypertrophic cardiomyopathy, and heart failure with reduced EF, for example.<sup>24,32,33</sup> Several smaller studies evaluating LA strain in severe AS have shown an association with clinical outcome, although have been limited by small sample size, and none have evaluated the prognostic value of LARS-DD grading.<sup>8–12</sup> The present study of over 600 patients with severe AS demonstrates that an increased LARS-DD grade is associated with worse long-term post-TAVI survival, independent of comorbidities, LVEF, stroke volume index, severity of symptoms, atrial fibrillation, and LA size. This finding may suggest that patients with a higher LARS-DD grade may have increased LA/LV myocardial fibrosis and functional impairment, which, despite restoration of normal aortic valve function, may be irreversible.

### Association between post-TAVI LARS and new-onset atrial fibrillation

Following TAVI and the alleviation of LV pressure overload, a significant number of patients undergo LV reverse remodelling, with a reduction in LV mass, myocardial fibrosis, and subsequently, improvement in LV diastolic function.<sup>34</sup> However, for many patients, LV diastolic dysfunction is persistent, myocardial fibrosis does not regress, or intrinsic, irreversible LA dysfunction may be present.<sup>35,36</sup> Previous studies have demonstrated that LARS is associated with post-operative atrial fibrillation following surgical aortic valve replacement.<sup>37</sup> However, post-procedural atrial fibrillation is less common following TAVI, and no study has compared the association of pre-TAVI LARS and post-TAVI LARS with new-onset atrial fibrillation. The present study demonstrates that post-TAVI LARS is strongly associated with new-onset atrial fibrillation, whereas pre-TAVI LARS is not. It is probable that a significant degree of impairment of LARS pre-TAVI is due to reduced LV compliance, elevated filling pressures and diastolic dysfunction directly due to LV pressure overload, pathophysiological changes



**Figure 4** Kaplan–Meier curves demonstrating the association between LARS and new-onset atrial fibrillation according to (A) pre-TAVI LARS and (B) post-TAVI LARS. Lower values of post-TAVI LARS, but not of pre-TAVI LARS, were associated with an increased occurrence of new-onset atrial fibrillation. LARS, left atrial reservoir strain; TAVI, transcatheter aortic valve implantation.

which are reversed substantially following TAVI. Indeed, due to a reduction in LV afterload, post-TAVI LARS may more closely reflect intrinsic LA dysfunction than pre-TAVI LARS, and subsequently, would be expected to be more closely associated with the development of atrial fibrillation.

### Clinical implications

The use of LARS-DD grading offers several advantages in the evaluation of diastolic function in severe AS in a clinical setting: (i) a single measurement by speckle-tracking echocardiography is required to evaluate LV diastolic dysfunction, rather than a multi-parametric

**Table 4** Association between pre- and post-TAVI LARS and new-onset atrial fibrillation in patients without a history of atrial fibrillation

New-onset AF n = 285	LARS pre-TAVI	LARS post-TAVI	LARS post-TAVI ≥16%	LARS post-TAVI <16%
Events/person-years			8/369	13/108
Incidence rate, per 1000 person-years (95% CI)			2.17 (0.94–4.27)	11.98 (6.38–20.48)
Unadjusted HR (95% CI)	1.04 (0.95–1.13)	1.14 (1.06–1.23)	Reference	5.54 (2.29–13.43)
P-value for HR	0.40	0.0003		0.0002
HR (95% CI) adjusted for age and LAVI, per 1% < 20%	0.97 (0.87–1.07)	1.11 (1.02–1.22)	Reference	5.10 (2.01–12.91)
P-value for adjusted HR	0.53	0.014		0.0006
SDHR (95% CI) adjusted for age and LAVI, per 1% < 20%	1.00 (0.91–1.11)	1.14 (1.05–1.23)	Reference	5.55 (2.17–14.24)
P-value for adjusted SDHR	0.93	0.0009		0.0004

AF, atrial fibrillation; HR, hazard ratio; LARS-DD, left atrial reservoir strain diastolic dysfunction; LAVI, left atrial volume indexed; SDHR, subdistributional hazard ratio for new-onset atrial fibrillation.

evaluation with conventional Doppler assessment, which may be more reproducible and less time-consuming, (ii) evaluation of LARS is angle independent, (iii) evaluation of LV diastolic function with LARS may be more sensitive, accurate, and feasible than conventional assessment.<sup>7,31</sup> In addition, the present study demonstrates that LARS-DD grading is independently associated with long-term post-TAVI survival, even after adjustment for multi-parametric diastolic dysfunction grading according to guideline recommendations, LVEF, LA volume index, and LV GLS, and may have an important role in patient risk stratification and prognostication. Further research in asymptomatic patients with severe AS is required to evaluate whether LARS-DD grading could improve patient selection for intervention. The current study also demonstrates that post-TAVI LARS may be a better predictor of new-onset atrial fibrillation following TAVI than pre-TAVI LARS, emphasising the need to re-evaluate LA and LV function following the treatment of pressure overload. Indeed, it is possible that reduced post-TAVI LARS reflects insufficient reverse remodelling, an alternative aetiology of diastolic dysfunction or intrinsic LA dysfunction, important considerations for the clinician.

## Limitations

This study is subject to all the limitations of its single centre, retrospective, observational design. In addition, LARS was evaluated with vendor-specific software, and this should be considered when interpreting the values of LARS with different types of software. Although this study provides a prognostic validation of LARS-DD grading in severe AS, further comparison with invasive haemodynamics is needed for this patient subgroup. Furthermore, while alterations in haemodynamics and LV compliance occur soon after TAVI, LV reverse remodelling may continue to occur over 1 year following the procedure, and post-TAVI LARS assessed at ~1 month (as in the current study) is likely also influenced by the degree and rapidity of cardiac reverse remodelling, reflecting persistent LV diastolic dysfunction and not only a pure estimate of intrinsic LA function.<sup>38</sup> Studies have shown a wide range of normal values of LA strain in the general population.<sup>39</sup> Therefore, it is imperative that a single low value of LARS not be used in isolation for risk stratification or clinical decision-making. Although all patients underwent systematic clinical follow-up after TAVI with routine 12-lead ECG assessment, it is probable that some cases of paroxysmal atrial fibrillation were not detected.

## Conclusion

An increased LARS-DD grade was independently associated with long-term post-TAVI survival in patients with severe AS and may enhance risk stratification. In addition, post-TAVI LARS, but not pre-TAVI LARS, was closely related to the occurrence of new-onset atrial fibrillation, probably better reflecting intrinsic LA dysfunction.

## Supplementary data

Supplementary data are available at *European Heart Journal - Cardiovascular Imaging* online.

## Funding

S.C.B. received funding from the European Society of Cardiology (ESC Research Grant App000080404). K.H. received funding from the European Society of Cardiology (ESC Research Grant, R-2018-18122).

**Conflict of interest:** The Department of Cardiology of the Leiden University Medical Center received research grants from Abbott Vascular, Bayer, Bioventrix, Medtronic, Biotronik, Boston Scientific, GE Healthcare, and Edwards Lifesciences. N.A.M. and J.J.B. received speaker fees from Abbott Vascular. Victoria Delgado received speaker fees from Abbott Vascular, Edwards Lifesciences, GE Healthcare, MSD, Novartis, and Medtronic and consultancy fees from Edwards Lifesciences and Novo Nordisk. The remaining authors have nothing to disclose.

## Data availability

The data that support the results of this study are available from the corresponding author upon reasonable request.

## References

1. Iung B, Delgado V, Rosenhek R, Price S, Prendergast B, Wendler O et al. Contemporary presentation and management of valvular heart disease: the EURObservational Research Programme Valvular Heart Disease II Survey. *Circulation* 2019;**140**:1156–69.
2. Strange GA, Stewart S, Curzen N, Ray S, Kendall S, Braidley P et al. Uncovering the treatable burden of severe aortic stenosis in the UK. *Open Heart* 2022;**9**:e001783.
3. Otto CM, Nishimura RA, Bonow RO, Carabello BA, Erwin JP III, Gentile F et al. 2020 ACC/AHA guideline for the management of patients with valvular heart disease: a report of the American College of Cardiology/American Heart Association Joint Committee on clinical practice guidelines. *Circulation* 2021;**143**:e72–227.
4. Vahanian A, Beyersdorf F, Praz F, Milojevic M, Baldus S, Bauersachs J et al. 2021 ESC/EACTS guidelines for the management of valvular heart disease. *Eur Heart J* 2022;**43**: 561–632.

5. Kvaslerud AB, Gude E, Eriksen G, Andreassen AK, Gullestad L, Broch K. Diastolic dysfunction is unmasked on exercise in patients with asymptomatic, severe aortic stenosis: an invasive hemodynamic study. *Circ Heart Fail* 2022;**15**:e009253.
6. Kampaktsis PN, Kokkinidis DG, Wong SC, Vavuranakis M, Skubas NJ, Devereux RB. The role and clinical implications of diastolic dysfunction in aortic stenosis. *Heart* 2017;**103**:1481–7.
7. Singh A, Addetia K, Maffessanti F, Mor-Avi V, Lang RM. LA strain for categorization of LV diastolic dysfunction. *JACC Cardiovasc Imaging* 2017;**10**:735–43.
8. Meimoun P, Djebali M, Botoro T, Djou Md U, Bidounga H, Elmekies F et al. Left atrial strain and distensibility in relation to left ventricular dysfunction and prognosis in aortic stenosis. *Echocardiography* 2019;**36**:469–77.
9. Sabatino J, De Rosa S, Leo I, Strangio A, La Bella S, Sorrentino S et al. Early reduction of left atrial function predicts adverse clinical outcomes in patients with severe aortic stenosis undergoing transcatheter aortic valve replacement. *Open Heart* 2021;**8**:e001685.
10. Galli E, Fournet M, Chabanne C, Lelong B, Leguerrier A, Flecher E et al. Prognostic value of left atrial reservoir function in patients with severe aortic stenosis: a 2D speckle-tracking echocardiographic study. *Eur Heart J Cardiovasc Imaging* 2016;**17**:533–41.
11. Weber J, Bond K, Flanagan J, Passick M, Petillo F, Pollack S et al. The prognostic value of left atrial global longitudinal strain and left atrial phasic volumes in patients undergoing transcatheter valve implantation for severe aortic stenosis. *Cardiology* 2021;**146**:489–500.
12. Todaro MC, Carerj S, Khandheria B, Cusma-Piccione M, La Carrubba S, Antonini-Canterin F et al. Usefulness of atrial function for risk stratification in asymptomatic severe aortic stenosis. *J Cardiol* 2016;**67**:71–9.
13. Baumgartner HC, Hung JC-C, Bermejo J, Chambers JB, Edvardsen T, Goldstein S et al. Recommendations on the echocardiographic assessment of aortic valve stenosis: a focused update from the European Association of Cardiovascular Imaging and the American Society of Echocardiography. *Eur Heart J Cardiovasc Imaging* 2017;**18**:254–75.
14. Lancellotti P, Tribouilloy C, Hagendorff A, Popescu BA, Edvardsen T, Pierard LA et al. Recommendations for the echocardiographic assessment of native valvular regurgitation: an executive summary from the European Association of Cardiovascular Imaging. *Eur Heart J Cardiovasc Imaging* 2013;**14**:611–44.
15. Lang RM, Badano LP, Mor-Avi V, Afilalo J, Armstrong A, Ernande L et al. Recommendations for cardiac chamber quantification by echocardiography in adults: an update from the American Society of Echocardiography and the European Association of Cardiovascular Imaging. *J Am Soc Echocardiogr* 2015;**28**:1–39.e14.
16. Nagueh SF, Smiseth OA, Appleton CP, Byrd BF, Dokainish H, Edvardsen T et al. Recommendations for the evaluation of left ventricular diastolic function by echocardiography: an update from the American Society of Echocardiography and the European Association of Cardiovascular Imaging. *Eur Heart J Cardiovasc Imaging* 2016;**17**:1321–60.
17. Badano LP, Koliaas TJ, Muraru D, Abraham TP, Aurigemma G, Edvardsen T et al. Standardization of left atrial, right ventricular, and right atrial deformation imaging using two-dimensional speckle tracking echocardiography: a consensus document of the EACVI/ASE/Industry Task Force to standardize deformation imaging. *Eur Heart J Cardiovasc Imaging* 2018;**19**:591–600.
18. Hindricks G, Potpara T, Dagres N, Arbelo E, Bax JJ, Blomstrom-Lundqvist C et al. 2020 ESC guidelines for the diagnosis and management of atrial fibrillation developed in collaboration with the European Association for Cardio-Thoracic Surgery (EACTS): the Task Force for the diagnosis and management of atrial fibrillation of the European Society of Cardiology (ESC) developed with the special contribution of the European Heart Rhythm Association (EHRA) of the ESC. *Eur Heart J* 2021;**42**:373–498.
19. Harrell FE Jr. *Regression Modeling Strategies: with Applications to Linear Models, Logistic and Ordinal Regression, and Survival Analysis*. New York: Springer; 2015.
20. Rubin DB. *Multiple Imputation for Nonresponse in Surveys*. New York: John Wiley & Sons; 2004.
21. Ogundimu EO, Altman DG, Collins GS. Adequate sample size for developing prediction models is not simply related to events per variable. *J Clin Epidemiol* 2016;**76**:175–82.
22. Fine JP, Gray RJ. A proportional hazards model for the subdistribution of a competing risk. *J Am Stat Assoc* 1999;**94**:496–509.
23. Rossi A, Gheorghiadu M, Triposkiadis F, Solomon SD, Pieske B, Butler J. Left atrium in heart failure with preserved ejection fraction: structure, function, and significance. *Circ Heart Fail* 2014;**7**:1042–9.
24. Lee HJ, Kim HK, Rhee TM, Choi YJ, Hwang IC, Yoon YE et al. Left atrial reservoir strain-based left ventricular diastolic function grading and incident heart failure in hypertrophic cardiomyopathy. *Circ Cardiovasc Imaging* 2022;**15**:e013556.
25. Potter EL, Ramkumar S, Kawakami H, Yang H, Wright L, Negishi T et al. Association of asymptomatic diastolic dysfunction assessed by left atrial strain with incident heart failure. *JACC Cardiovasc Imaging* 2020;**13**:2316–26.
26. Gjerdtsson P, Caidahl K, Farasati M, Oden A, Bech-Hanssen O. Preoperative moderate to severe diastolic dysfunction: a novel Doppler echocardiographic long-term prognostic factor in patients with severe aortic stenosis. *J Thorac Cardiovasc Surg* 2005;**129**:890–6.
27. Asami M, Lanz J, Stortecy S, Raber L, Franzone A, Heg D et al. The impact of left ventricular diastolic dysfunction on clinical outcomes after transcatheter aortic valve replacement. *JACC Cardiovasc Interv* 2018;**11**:593–601.
28. Dahl JS, Christensen NL, Videbæk L, Poulsen MK, Carter-Storch R, Hey TM et al. Left ventricular diastolic function is associated with symptom status in severe aortic valve stenosis. *Circ Cardiovasc Imaging* 2014;**7**:142–8.
29. Lund O, Flo C, Jensen FT, Emmertsen K, Nielsen TT, Rasmussen BS et al. Left ventricular systolic and diastolic function in aortic stenosis. Prognostic value after valve replacement and underlying mechanisms. *Eur Heart J* 1997;**18**:1977–87.
30. Kampaktsis PN, Vavuranakis M, Choi DY, Sherifi I, Christofi A, Triantafyllou D et al. Prognostic role of diastolic dysfunction in patients undergoing transcatheter aortic valve replacement. *Catheter Cardiovasc Interv* 2020;**95**:1024–31.
31. Venkateshvaran A, Tureli HO, Faxen UL, Lund LH, Tossavainen E, Lindqvist P. Left atrial reservoir strain improves diagnostic accuracy of the 2016 ASE/EACVI diastolic algorithm in patients with preserved left ventricular ejection fraction: insights from the KARUM haemodynamic database. *Eur Heart J Cardiovasc Imaging* 2022;**23**:1157–68.
32. Stassen J, van Wijngaarden AL, Butcher SC, Palmén M, Herbots L, Bax JJ et al. Prognostic value of left atrial reservoir function in patients with severe primary mitral regurgitation undergoing mitral valve repair. *Eur Heart J Cardiovasc Imaging* 2022;**24**:142–51.
33. Carluccio E, Biagioli P, Mengoni A, Francesca Cerasa M, Lauciello R, Zuchi C et al. Left atrial reservoir function and outcome in heart failure with reduced ejection fraction. *Circ Cardiovasc Imaging* 2018;**11**:e007696.
34. Fairbairn TA, Steadman CD, Mather AN, Motwani M, Blackman DJ, Plein S et al. Assessment of valve haemodynamics, reverse ventricular remodelling and myocardial fibrosis following transcatheter aortic valve implantation compared to surgical aortic valve replacement: a cardiovascular magnetic resonance study. *Heart* 2013;**99**:1185–91.
35. Magalhaes MA, Koifman E, Torguson R, Minha S, Gai J, Kiramijyan S et al. Outcome of left-sided cardiac remodeling in severe aortic stenosis patients undergoing transcatheter aortic valve implantation. *Am J Cardiol* 2015;**116**:595–603.
36. Malik AO, Omer M, Pfleiderer MC, Almomani A, Gosch KL, Jones PG et al. Association between diastolic dysfunction and health status outcomes in patients undergoing transcatheter aortic valve replacement. *JACC Cardiovasc Interv* 2019;**12**:2476–84.
37. Pernigo M, Benfari G, Geremia G, Noni M, Borio G, Mazzali G et al. Atrial function as an independent predictor of postoperative atrial fibrillation in patients undergoing aortic valve surgery for severe aortic stenosis. *J Am Soc Echocardiogr* 2017;**30**:956–65e1.
38. Chau KH, Douglas PS, Pibarot P, Hahn RT, Khalique OK, Jaber WA et al. Regression of left ventricular mass after transcatheter aortic valve replacement: the PARTNER trials and registries. *J Am Coll Cardiol* 2020;**75**:2446–58.
39. Nyberg J, Jakobsen EO, Ostvik A, Holte E, Stolen S, Lovstakken L et al. Echocardiographic reference ranges of global longitudinal strain for all cardiac chambers using guideline-directed dedicated views. *JACC Cardiovasc Imaging* 2023;**16**:1516–31.