

Table1. Demographic data of the Control and Study group

	<b>Control Group (n=1,452)</b>	<b>Study Group (n=1,441)</b>	<b>P-value</b>
Age (yrs.)	72.60 (7.32)	72.79 (7.05)	0.946
Gender (M/F) (%)	23/77	22.1/77.9	0.593
Diabetic patients (%)	17.6	16.7	0.723
Weight (kg)	77.37 (13.54)	77.90 (13.5)	0.408
Height (cm)	1.57	1.58	0.99
BMI	31.63 (5.09)	31.72 (5.15)	0.889
Operating time (min)	103.14 (19.23)	104.11 (19.13)	0.150

BMI= Body mass index

Table 2. Rate of infection

	<b>Control Group (n=1,452)</b>	<b>Study Group (n=1,441)</b>	<b>Total</b>	<b>P-value</b>
Deep infection	29	24	53	0.58
No deep infection	1423	1417	2840	

Table 3. Risk factors for Deep Infection in the Study Population

<b>Risk factor</b>	<b>Deep infection (n=53)</b>	<b>No deep infection (n=2840)</b>	<b>P-value</b>
Age † (yr.)	72.15 ± 7.43	72.7 ± 7.18	0.73
Gender (M/F) (%)	21/32 (40/60)	628/2198 (23/73)	<b>0.004</b>
Weight † (kg)	83.64 ± 14.43	76.85 ± 15.41	<b>0.003</b>
Height † (cm)	1.62 ± 0.10	1.57 ± 0.09	0.08
BMI	31.92 ± 8.93	31.67 ± 5.61	0.954
Diabetic patients (n, %)	14 (26)	481 (17)	0.09
Operating time of >125 min (number, %)	14 (26.9)	429 (15.3)	<b>0.031</b>

Table 4. Multivariate Model of Risk Factors for Deep Infection.

Variable	Odds ratio (95% CI)	P value
Weight (Kg)	1.02 (1.0 to 1.04)	0.037
Sex (M)	2.39 (1.3 to 4.38)	0.005
Operating time of >125 min	1.84 (0.94 to 3.61)	0.042

Table 5. Cultures of specimens from knees with infection

	Control Group (n=29)	Study Group (n=24)	Total (n=53)
Staphylococcus	16	16	32
Streptococcus	2	0	2
Gram-negative bacteria	6	3	9
Gram-positive bacteria*	2	3	5
Enterococcus	1	1	1
Negative culture PJI	2	1	3

\*non staphylococcus either streptococcus

Table 6. Aseptic loosening with prosthetic revision

	Control Group (n=1,452)	Study Group (n=1,441)	Total	P-value
Aseptic loosening with prosthetic revision	33 (2.27%)	37 (2.57%)	70	0.83

Figure 1. Kaplan Meier graphic with reinterventions due to aseptic loosening.

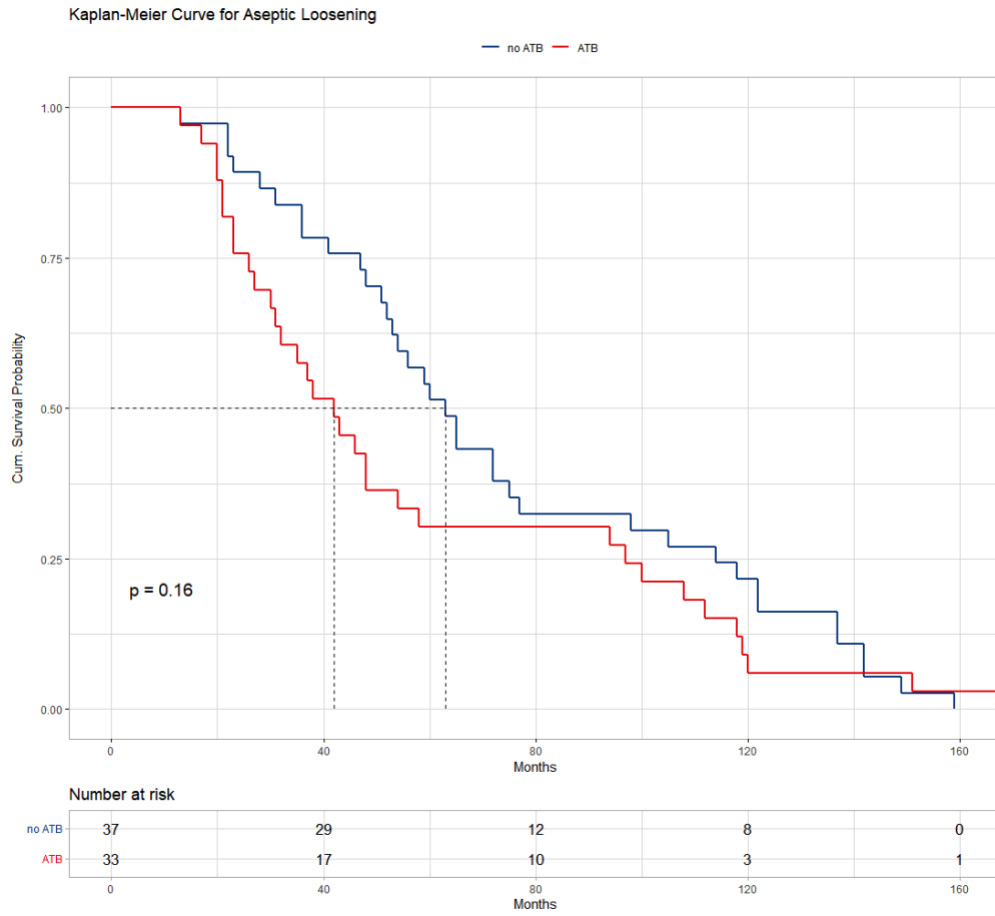


Table 7. Erythromycin sensitivity tested in gram-positive cultures.

	<b>Control Group (n=19)</b>	<b>Study Group (n=17)</b>	<b>P-value</b>
Resistant to erythromycin (n= 16)	9 (47.4%)	7 (41.2 %)	0.77