

★ FEATURED



Image: Urbannext

The EU highlights 4 projects on environmental observation in which CREAM is involved

[Read more](#)

RESEARCH OUTPUTS



Image: Arquitectura Agronomia.

Polyfarming inspires Harvard University for designing a new city model

The alternative agriculture and livestock model defended by the [LIFE Polyfarming](#) project has starred in a recent video made by the Harvard Graduate School of Design.

[Read more](#)

JOIN US

Marie Sklodowska-Curie Individual Fellowships

A great option if you are an experienced researcher looking to give your career a boost by working abroad.



[Mónica Ladrón de Guevara Sáez de Equilaz](#)

Postdoctoral researcher at CREAM funded by Marie Skłodowska-Curie Fellowship

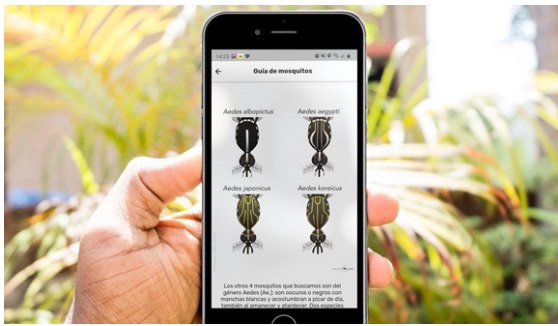


Image: Mosquito Alert.

The citizen science project Mosquito Alert is launched in Europe to track the spread of mosquitoes

[Read more](#)



Image: torrecollserola.com

Barcelona, appointed by the European Forest Institute to organise its annual forest and city conference in 2022

[Read more](#)

"The Marie Curie grant allows me to be part of a centre with an international projection and a very collaborative philosophy, something essential in the modern scientific system. Besides, this grant provides me with the opportunity to design and implement my own cutting-edge project."

[Read more](#)

[ABOUT US](#)



Joan Masó, a researcher against the digital Tower of Babel

[Read more](#)

TESTIMONIALS



Gerid Hage

WeObserve project lead at the International Institute for Applied Systems Analysis (IIASA)

"We appreciate CREAM for being a very forward-looking and practice-oriented collaborator. CREAM has been a much valued partner and driving force in bringing awareness about the topic of data standardisation and interoperability into the field of citizen science and is a leading actor in developing and testing solutions that help bridge the gap between citizen science and other EO data communities such as [GEOSS](#) and [Copernicus](#)."

IIASA has worked together with CREAM in Citizen Observatory projects such as [LandSense](#) and [WeObserve](#)

NEW PROJECTS

CREAF's researchers [Joan Pino](#) and [Corina Basnou](#) take active part in two H2020 European projects: Clearing House and CONEXUS.



Joan Pino

"Cities across Europe and China are preparing to green themselves through changes in their urban planning and management to address the UN Sustainability Development Goals. Within **H2020 Clearing House project** we aim at exploring how urban forests will give support to this urban greening as nature-based solutions, through collaborative learning in research, information sharing and governance."



Corina Basnou

"Nature-based solutions thinking and place-based are the core principles in the new **H2020 CONEXUS project**. New and existing urban green planning strategies will be described and implemented from micro to macroscales. Co-design will foster community involvement and successful implementation of NBS in various cities in Europe and South America, thus a Living Lab will be created in Barcelona."

 **AGENDA**



COURSE: 1st FASTER Specialized Training

Until 6th November 2020
Online

To reinforce the research and knowledge transfer capacity of INRGREF and associated Tunisian partners in relation to innovative land and water management in view of climate change is the main objective of this course.

[Read more](#)



Citizen science & libraries: create your own air quality sensor with CanAir.io

Wednesday, 18th November 2020
Time: 21,30 h (CET)

Learn how to **contribute to air quality monitoring by using citizen science** and how to build your own air quality sensor with **CanAirIO**, a Colombian citizen observatory that uses mobile and fixed sensors for measuring air quality and Wi-Fi with low-cost technology and open source code.

[Sign Up](#)



www.creaf.cat | blog.creaf.cat



[Privacy policy.](#)

[Unsubscribe from this list.](#)

[Update your preferences](#)