

FEATURED



The Arctic, the Mediterranean forest and the tropical savannah, CREAM visitors and sabbaticals at a glance

[Read more](#)

RESEARCH OUTPUTS



Humans milk the periodic table turning a blind eye to its risks

[Read more](#)

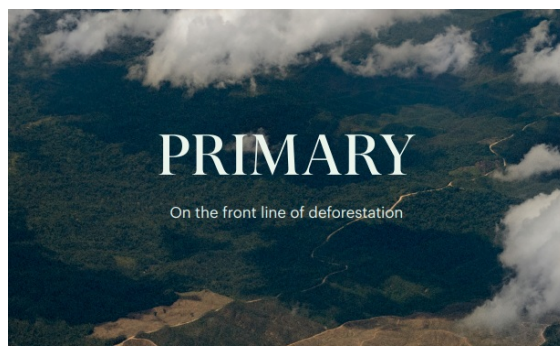
JOIN US

Postdoctoral researcher, Traces project.

Deadline 12 March 2023

You'll work on how to improve our ability to predict vegetation responses to environmental changes using trait-based approaches.

[Apply](#)



Individual and global decisions to avoid tropical primary forest loss

[Read more](#)



**BRITISH
ECOLOGICAL
SOCIETY**

Bridget Emmett, from CREAM International Scientific Committee, new Chair of the British Ecological Society

[Read more](#)



Sara Fraixedas

Postdoctoral researcher

"CREAF has long been in my radar as a global reference point for biodiversity science, and as a dynamic academic environment where I could thrive as a researcher. I am honoured to be part of this community"

 **ABOUT US**



**Angham Daiyoub: forest,
war, environmental
justice and ecofeminism**

[Read more](#)



TESTIMONIALS



MARC MACIAS FAURIA

Oxford University researcher

"Without a doubt, I would not have chosen a place other than CREAM for a sabbatical period: it's a centre with an evolution in recent years that should be taken into account. I've been away for 20 years, and CREAM's programme of scientific visits is an opportunity to get first-hand knowledge of the research being done"

M. Macias Fauria has been at CREAM on a sabbatical.



NEW PROJECTS

The innovative research of **FishMe** evaluates the threat of fish introductions to high mountain lakes. It will enable science to predict future impacts on ecosystem health of mountain lakes and the resulting socio-economic risks for society.



Marisol Felip Benach

CREAF

"FishME delivers the knowledge base to understand trade-offs between the economic and societal benefits of fish introductions and the **impact of fish stocking on mountain aquatic ecosystems**. It also aims to co-design and deliver the necessary knowledge to guide governance and management strategies to the **conservation, restoration, and long-term safeguard of mountain water ecosystems** and their biodiversity"



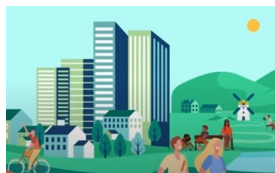
Ruben Sommaruga

University of Innsbruck

"FishME is a great possibility to understand not only the impact of fish introduction on the **ecology of mountain lakes in Europe**, but also its social and economical reasons. Finding lakes without fish in the Austrian Alps was a real challenge and gave us a grasp on the magnitude of the problem. We hope our research to raise awareness about the **very negative ecological consequences** of introducing fish to natural ecosystems"



AGENDA



COURSE: Nature in the city: turning knowledge into urban forestry practice

15th February 2023

Uforest offers unique and free training to work professionally with **urban forests**. The course provides knowledge and skills to develop innovative urban forestry solutions and promote the green transition of cities. It will be held both online and onsite.

Sign Up

CREAF Talks 2023

CREAF Talk with Prof. Darrel Jenerette Ecological components of urbanization in the context of a changing climate

Friday 17th February 2023, 12pm CET

To explore the interactions between urbanization and ecological processes, Prof. Darrel Jenerette uses Los Angeles as a case study, a Mediterranean type climate city with dramatic coastal to desert gradient, and home to 18 M people. Darrel Jenerette is a Prof. at **University California Riverside, EEUU**.

Sign Up

CREAF Talks 2023

CREAF Talk with Prof. Louis Lefebvre Comparing animal brains and intelligence

Friday 3rd March 2023, 12pm CET

Prof. Louis Lefebvre's challenge is to find the most useful methods and measures to test the link between the simplest forms of learning and the most complex manifestations of intelligence. Louis Lefebvre is a Prof. at **Mc Gill University, Canada**.

Sign Up



[Privacy policy.](#)

[Unsubscribe from this list.](#)

[Update your preferences](#)