

ECOLOGY MOVES US



★ FEATURED



Climate and energy priorities for the European Commissioner for the Mediterranean

[Read more](#)

🔍 RESEARCH OUTPUTS



Agriculture suffers from colossal waste of nitrogen that wreaks havoc on nature

A scientific work proposes solutions to correct soil acidification, while supporting the EU 'Farm to Fork' measures.

[Read more](#)

👤 JOIN US



Xènia Rodríguez Miret, pre-doctoral researcher

"I joined CREAF to pursue my PhD focused on evolutionary ecology. The community is incredibly welcoming and supportive. The collaborative spirit and shared passion for ecology create an environment where one can feel truly inspired, with engaging social events and debates. I have particularly enjoyed the useful scientific courses provided by the



Trees capture methane from the atmosphere thanks to microorganisms that live in their bark

[Read more](#)



Arctic melting and its effects on the entire planet

[Read more](#)

center".

[Read more](#)

[ABOUT US](#)



Alicia Pérez-Porro and the women's role in a climate change context

[Read more](#)

Help us move ecology!

[DONATE](#)

TESTIMONIALS



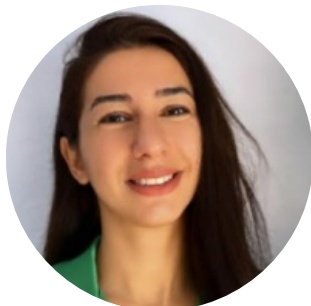
AKASH TARIQ

CREAF visiting professor - Chinese Academy of Sciences

"I highly regard the diverse contributions made by researchers at CREAF and express gratitude for their efforts in advancing the fields of science and policy **to promote a sustainable planet**. I immensely thank Prof. Josep Peñuelas and Jordi Sardans for their **pioneering and invaluable contributions** to our joint work, as well as for their guidance and steadfast support. Our collaborative efforts have delved into **the response mechanisms of deep-rooted plant species and plant-soil systems to climate change and human-driven disturbances in arid ecosystems**. We have developed sustainable management strategies and technical methodologies to restore vegetation, mitigate desertification, and prevent land degradation".

NEW PROJECTS

DigiMedFor focuses on transforming the technological landscape of the Mediterranean forest-wood supply chain, by increasing its competitiveness, allowing stakeholders to better manage and supply multiple forest ecosystem services, including the traceability of wood origin from forests to end-users.



Burcu Berk, CREAM Technical manager

"CREAF plays a key role in **DigiMedFor**, to connect forest management with key sustainability indicators and ecosystem services. By providing digitalized information to end users, CREAM supports informed decision-making and promotes sustainable forest management to benefit both the environment and society".



Prof. Luigi Saulino, Università degli Studi di Napoli Federico II

"At the core of DigiMedFor's approach lies the seamless integration of modern geo-spatial, artificial intelligence and Digital Twin technologies, combined with information and comms technology. It will pave the way for enhanced forest management and unlock unprecedented opportunities for the forest sector".

 **AGENDA**



Euromontana congress: 'Shaping the future of mountain economies'

**15th to 18th October, 2024
Puigcerdà, Catalonia (Spain)**

The European association Euromontana -dedicated to the sustainable development of mountain areas- is holding its 13th congress in Puigcerdà (La Cerdanya, Catalonia), to share and debate the present and future possibilities of mountain areas, environmentally, socially and economically.

[Sign Up](#)



8th Mediterranean Forest Week in Barcelona

**4th to 8th November, 2024
Barcelona, Catalonia (Spain)**

CREAF is involved together with EFIMed and the Secretariat of the FAO Committee of Mediterranean Forestry Questions in co organizing the 8th Mediterranean Forest Week, a biennial event focused on Mediterranean forest ecosystems restoration. It's also a platform for cooperation among researchers, policymakers, and stakeholders.

[Sign Up](#)



www.creaf.cat | blog.creaf.cat



[Privacy policy.](#)

[Unsubscribe from this list.](#)

[Update your preferences](#)