

Figure S1. Daily steps counts (A; n/d), frequency of meals (B; n/d), time at the feed bunk (C; min/d), number of lying bouts (D; n/d) and lying time (E; min/d) of not diagnosed diseased cows (n = 345) vs. cows diagnosed with metritis, mastitis, retained placenta, displaced abomasums, ketosis and hypocalcemia (n = 144) from d -21 to d 0 relative to calving. Results are presented as least square means (\pm SEM).

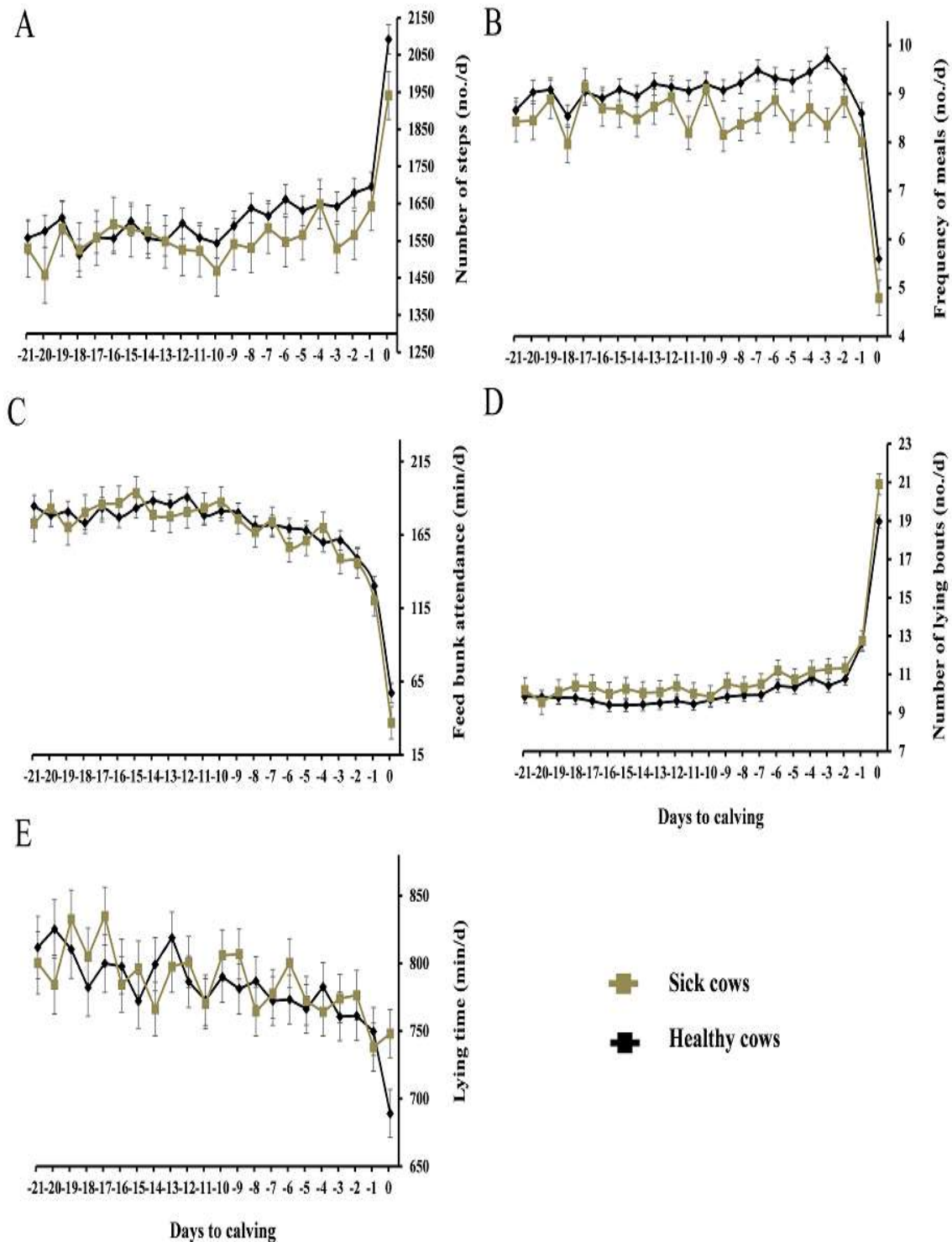


Figure S2. Daily steps counts (A; n/d), frequency of meals (B; n/d), time at the feed bunk (C; min/d), number of lying bouts (D; n/d) and lying time (E; min/d) of not diagnosed diseased cows (n = 345) vs. cows with metritis (n = 39) from d -21 to d 0 relative to calving. Results are presented as least square means (\pm SEM); (*) within the same day differ at $P < 0.05$; (†) within the same day tended to differ ($0.05 < P < 0.10$).

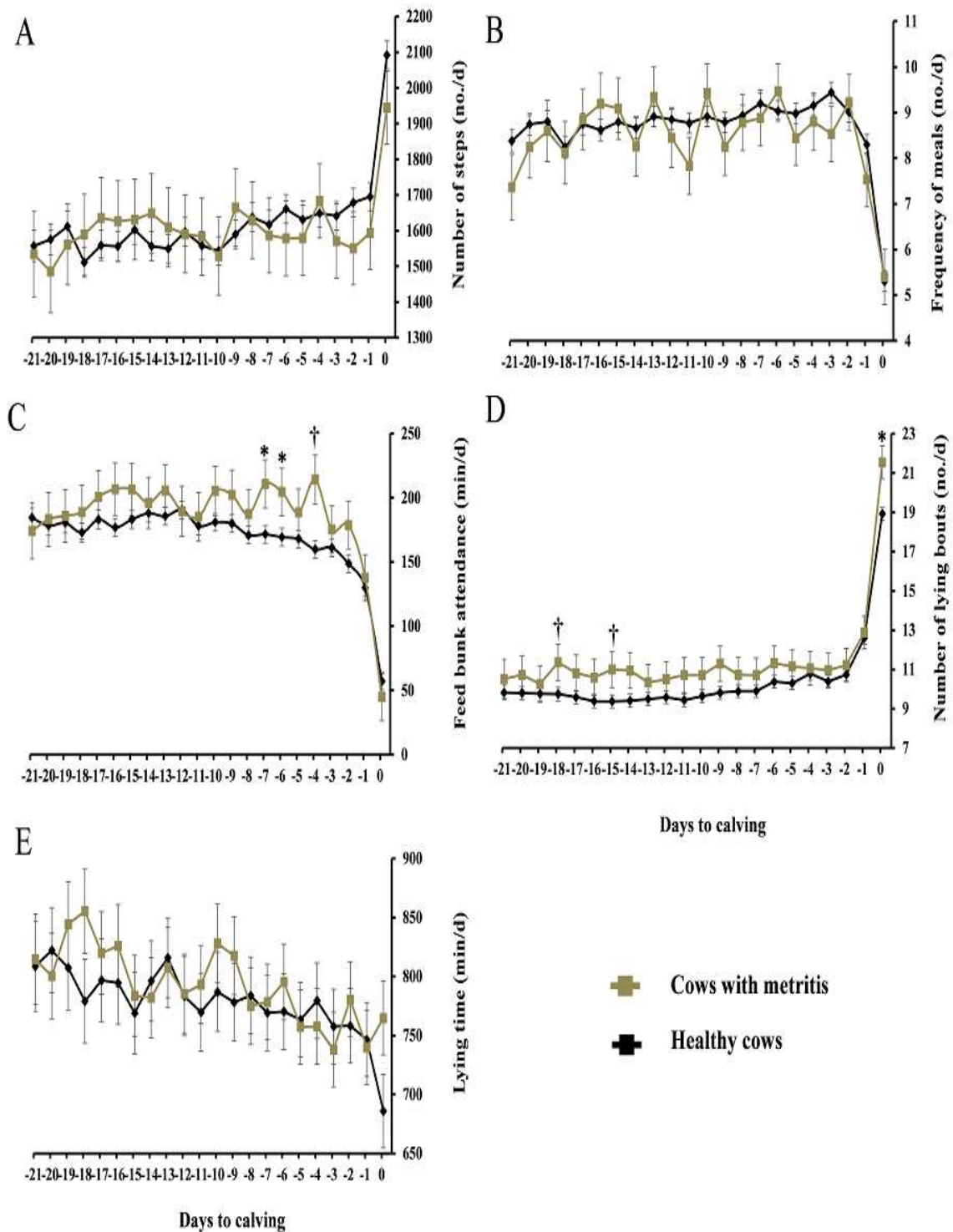


Figure S3. Daily steps counts (A; n/d), frequency of meals (B; n/d), time at the feed bunk (C; min/d), number of lying bouts (D; n/d) and lying time (E; min/d) of not diagnosed diseased cows (n = 345) vs. cows with mastitis (n = 25) from d -21 to d 0 relative to calving. Results are presented as least square means (\pm SEM).

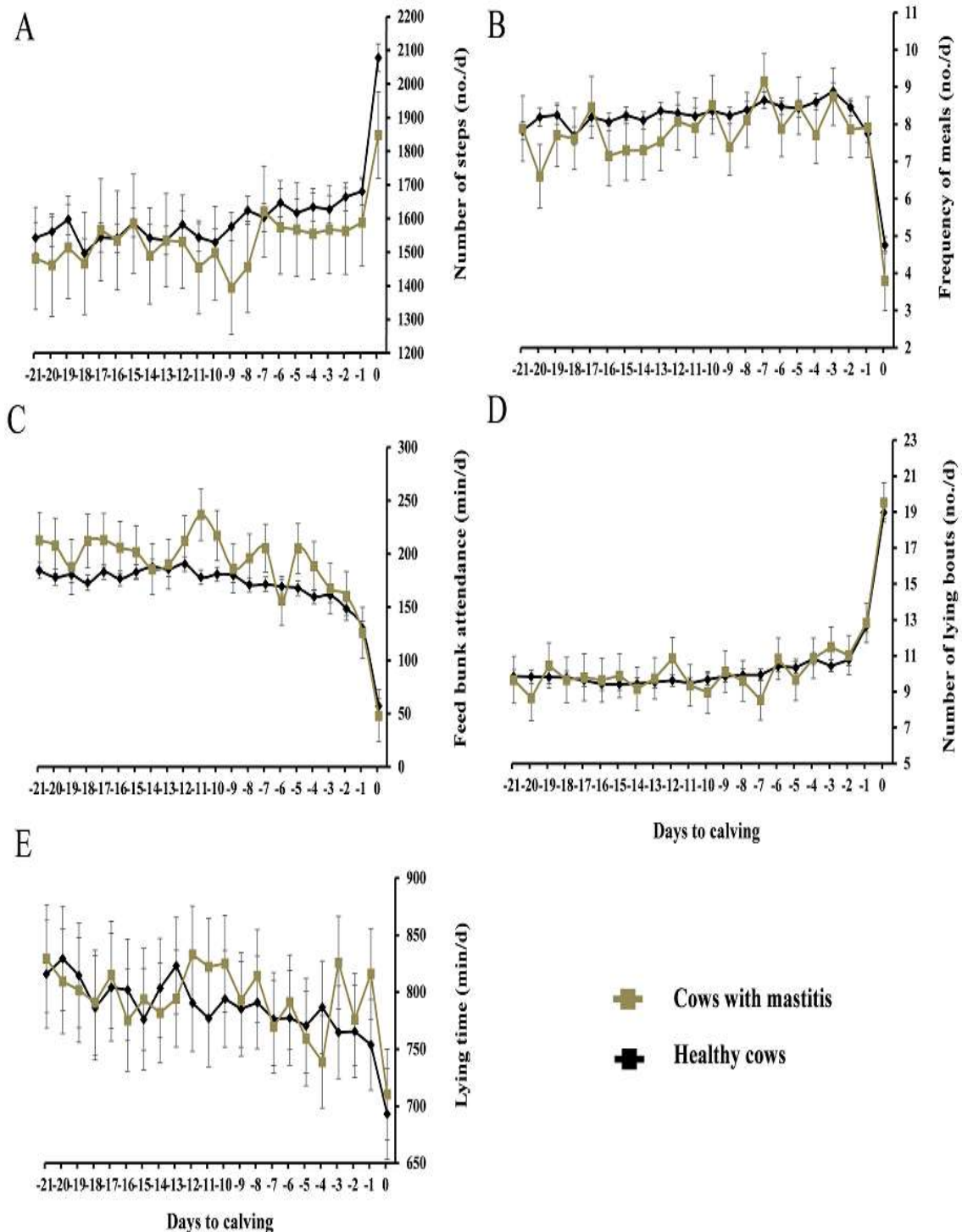


Figure S4. Daily steps counts (A; n/d), frequency of meals (B; n/d), time at the feed bunk (C; min/d), number of lying bouts (D; n/d) and lying time (E; min/d) of cows not diagnosed diseased cows (n = 345) vs. cows with retained placenta (n = 25) from d -21 to d 0 relative to calving. Results are presented as least square means (\pm SEM).

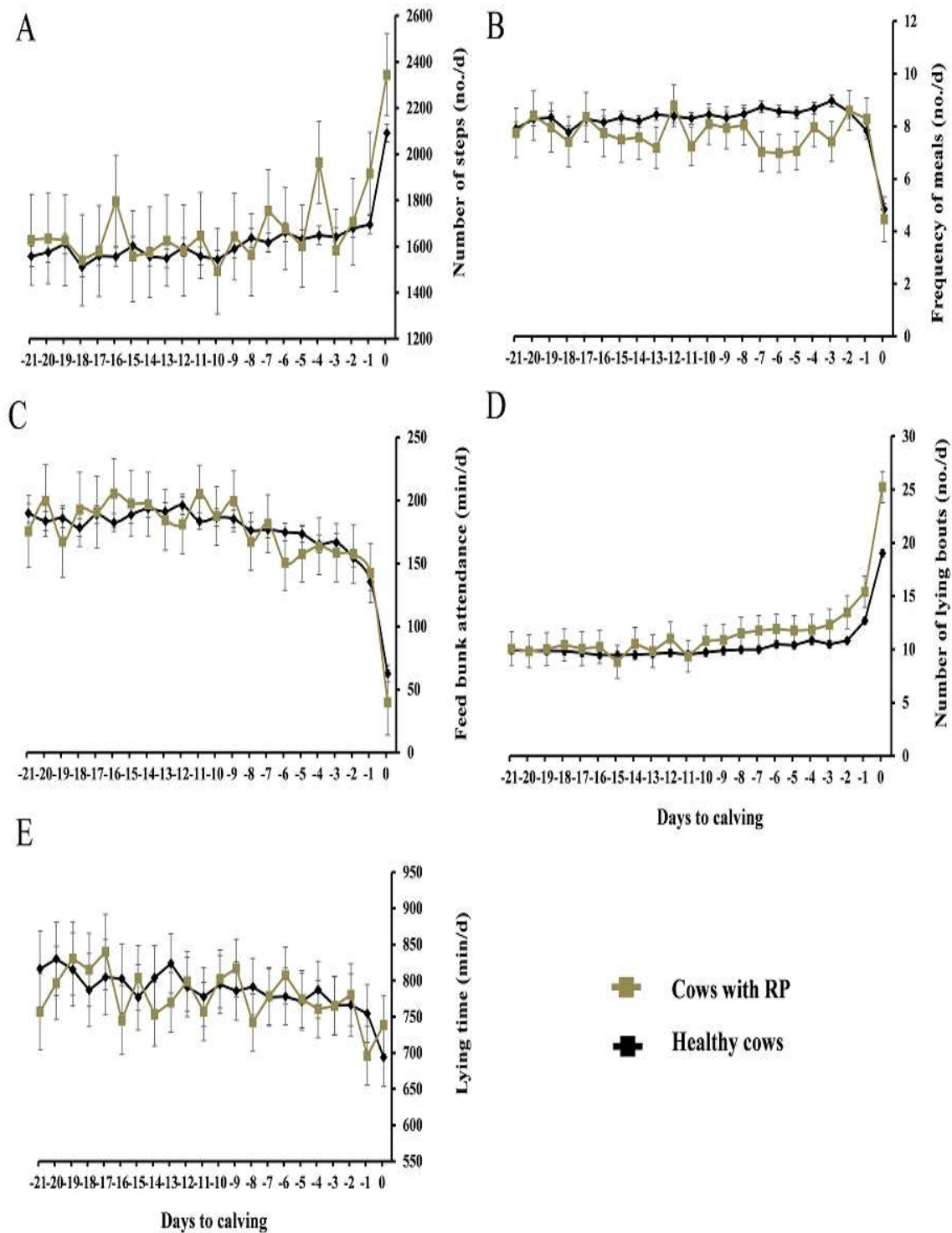


Figure S5. Daily steps counts (A; n/d), frequency of meals (B; n/d), time at the feed bunk (C; min/d), number of lying bouts (D; n/d) and lying time (E; min/d) of not diagnosed diseased cows (n = 345) vs. cows with displaced abomasum (n = 19) from d -21 to d 0 relative to calving. Results are presented as least square means (\pm SEM); (*) within the same day differ at $P < 0.05$; (†) within the same day tended to differ ($0.05 < P < 0.10$).

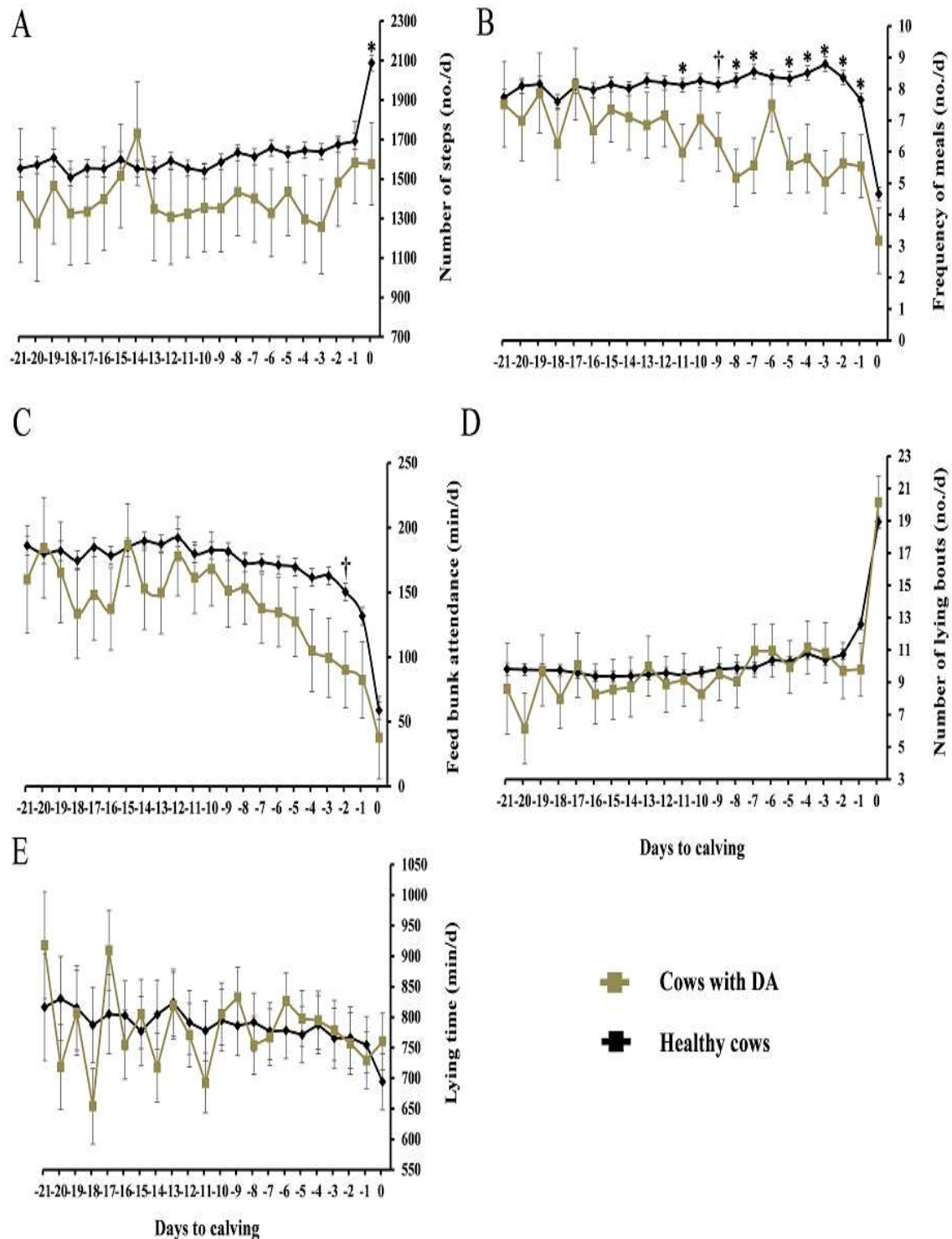


Figure S6. Daily steps counts (A; n/d), frequency of meals (B; n/d), time at the feed bunk (C; min/d), number of lying bouts (D; n/d) and lying time (E; min/d) of not diagnosed diseased cows ($n = 345$) vs. cows with ketosis ($n = 15$) from d -21 to d 0 relative to calving. Results are presented as least square means (\pm SEM); (*) within the same day differ at $P < 0.05$; (†) within the same day tended to differ ($0.05 < P < 0.10$).

