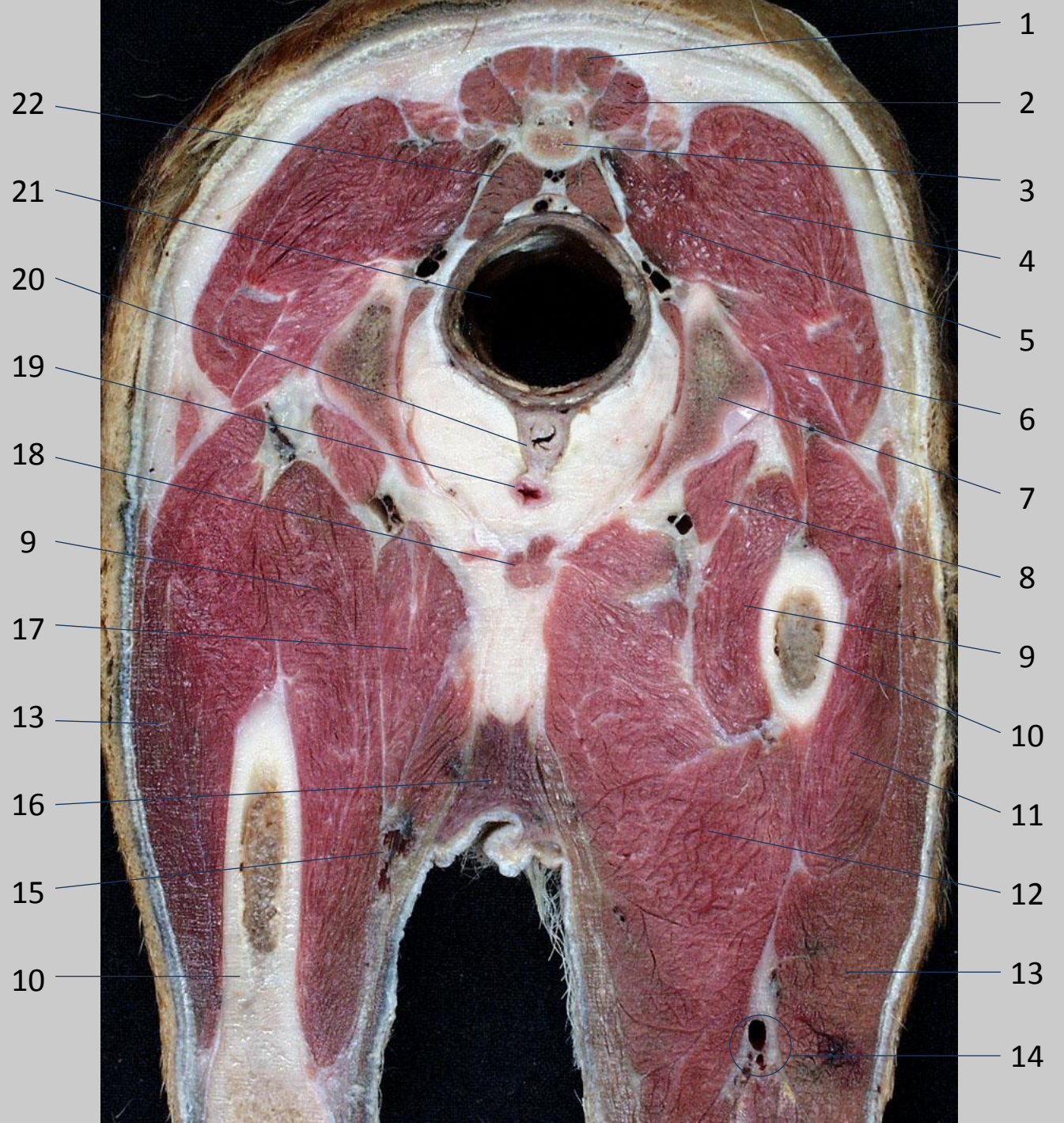
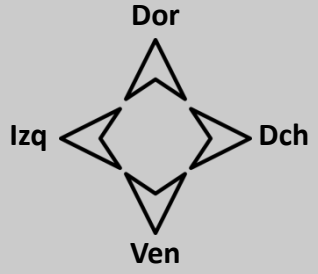




Sección transversal 32 Hembra
Abdomen caudal y pelvis
Visión caudal



- 22
- 21
- 20
- 19
- 18
- 9
- 17
- 13
- 16
- 15
- 10

- 1
- 2
- 3
- 4
- 5
- 6
- 7
- 8
- 9
- 10
- 11
- 12
- 13
- 14