



INCASI *International Network for
Comparative Analysis of Social Inequalities*



INCASI Newsletter is the bimonthly newsletter of the INCASI research and training network, made up of 29 academic and non-academic organizations from Europe and Latin America and the Caribbean that develops the European project "*A New Measure of Socioeconomic Inequalities for International Comparison*" (INCASI2, HE-MSCA-SE-2022, GA-101130456)

In this issue:

- + Presentation
- + Audiovisual pills
- + INCASI Living Lab
- + INCASI2 Training
- + ILL Dialogues
- + Workshop on Inequality
- + Seminars and conferences
- + The inequality map
- + The inequality data
- + Network Secondments
- + INCASI Policy Brief
- + Publications
- + Call for papers
- + Other news
- + Upcoming activities
- + Credits



Funded by
the European Union



Presentation

In the midst of the dynamics of the second year of the INCASI2 project, we would like to highlight some of the activities planned for the coming months.

On the one hand, we continue with the **secondments** carried out by the members of the INCASI network, especially those from the countries of the southern hemisphere that are in the summer period. So far we have made 88 months of stays, 25% of those planned and we hope to reach 50% by the end of the first period, in October of this year.

At the end of March, we will hold the **2nd Global Meeting** with the principal investigators of the 29 research Centres of the network, in Rio de Janeiro, also coinciding with the celebration of the VIII International Seminar on Social Inequality and Mobility in Latin America (**DEMOSAL**).

In the coming days we will announce in an informative meeting the online training proposal of INCASI2 we have called **Training Courses on International Comparative Analysis of Socioeconomic Inequalities** (*INCASI Training Courses*). In this newsletter we present an overview of the contents.

On May 21 and 22, we will hold a INCASI2 **conference** entitled **Public Policies, Reforms and Innovation in Europe and Latin America** at the Università della Calabria, which will take place on May 21 and 22, 2025, from 1:30 p.m. to 6:30 p.m. (Italian time), in a hybrid format. We are working on the organization and soon we will detail the program.

In this newsletter we present the usual sections of the publication along with other activities of the network that have taken place during this last period.

INCASI Coordination



Audiovisual pills

This section includes various videos with a small dose of the synthesis of the contents of the seminars given in the context of the INCASI Living Lab.

- ✚ [Social actors in the face of the environment-work conflict. Transnational evidence from Italy, the Netherlands and Argentina.](#) Luca Novelli: Universidad Nacional de la Plata (UNLP)
- ✚ [The impact of material deprivation on the process of social mobility.](#) Idelfonso Márquez-Perales: University of Seville (US)
- ✚ [A methodological proposal to address school inequality in secondary school, beyond academic performance.](#) Francisco Santana Armas and Carmen Pérez Sánchez: University of La Laguna (ULL)
- ✚ [Situation and Comparative Measurement of Poverty in Latin America: A New Lost Decade?.](#) Eduardo Chávez Molina (coord.): Universidad de Buenos Aires (UBA)
- ✚ [Stratification mismatch: from structural occupation-based classification to individual outcomes. Evidence from Italy-Spain-Mexico-Chile.](#) Renata Semenza, Simone Sarti and Gonzalo Franetovic: Università degli Studi di Milano (UMIL)
- ✚ [Intergenerational Social Mobility in Latin America and Europe: A Scoping Review in the Countries of the INCASI2 Network.](#) Cristian Segura-Carrillo: Universitat Autònoma de Barcelona (UAB)
- ✚ [Access to rights regardless one's status? The production of illegality in Finland and its contribution to enhancing inequality.](#) Anitta Kynsilehto: Tampere University (TAU)
- ✚ [Territorial inequalities in the promotion of autonomy and dependency care policy in Spain \(2007-2024\): regional divergences and convergences.](#) Manuel Sánchez Reinón: Complutense University of Madrid (UCM)
- ✚ [Higher Education: Leads for a research program on horizontal stratification.](#) Pablo Molina Derteano: Universidad de Buenos Aires (UBA)
- ✚ [Integration of secondary data sources for the characterization of territorial structures. Reflections from the field of social stratification and first employment studies.](#) Bárbara Estévez Leston: Gino Germani Research Institute (IIGG)
- ✚ [Cultural consumption: between social inequality and digitalization. Argentina and Spain in comparative perspective \(2019-2024\).](#) Ana Wortman: Universidad de Buenos Aires (UBA)
- ✚ [The long term in migrations. Intersectional inequalities and strategies for the sustainability of the lives of older migrant women.](#) María José Magliano: National University of Córdoba (UNC) and CONICET.

INCASI Living Lab

The **INCASI Living Lab** (ILL) is an open space for reflection on socioeconomic inequalities that promotes scientific cooperation, exchange and transfer of knowledge through seminars and meetings between the academic and socio-political spheres, national



or international, with the aim of disseminating and discussing analyses, diagnoses and recommendations that serve to guide public policies.

At the time of writing this issue, we have held 45 sessions since the beginning of the project, with three different modalities: the **Seminars**, which are organized mainly on the occasion of each research stay, the **Methodological Issues**, where various methodological contents will be presented, both in a qualitative and quantitative or mixed perspective, linked to the objectives of the project, and the **Dialogues**, which are introduced as a novelty from a first meeting in December to promote open dialogue beyond the academic field.

These are the seminars held until January 2025:

ILL37 Dialogues. Situation and Comparative Measurement of Poverty in Latin America: A New Lost Decade? Eduardo Chávez Molina (coord.): Gino Germani Research Institute (IIGG). Held on December 2 at the University of Buenos Aires (UBA). Video available [here](#).

ILL38 Stratification mismatch: from structural occupation-based classification to individual outcomes. Evidence from Italy-Spain-Mexico-Chile. Renata Semenza, Simone Sarti y Gonzalo Franetovic: Università degli Studi di Milano (UMIL). Held on December 4 at COLMEX. Video available [here](#).

ILL39 Intergenerational Social Mobility in Latin America and Europe: A Scoping Review in the Countries of the INCASI2 Network. Cristian Segura-Carrillo: Universitat Autònoma de Barcelona (UAB). Held on December 10 at the Centre for the Study of Conflict and Social Cohesion, University of Chile (UCH). Video available [here](#).

ILL40 Access to rights regardless one's status? The production of illegality in Finland and its contribution to enhancing inequality. Anitta Kynsilehto: Universitat de Tampere (TAU). Held on December 12 at the Universidad Pablo de Olavide (UPO). Video available [here](#).

ILL41 Territorial inequalities in the promotion of autonomy and dependency care policy in Spain (2007-2024): regional divergences and convergences. Manuel Sánchez Reinón: Complutense University of Madrid (UCM). Held on January 8 at Universidad de Chile. Video available [here](#).

ILL42 Higher Education: Leads for a research program on horizontal stratification. Pablo Molina Derteano: University of Buenos Aires (UBA). Held on January 16 at the University of Tampere (TAU). Video available [here](#).

ILL43 Integration of secondary data sources for the characterization of territorial structures. Reflections from the field of social stratification and first employment studies. Bárbara Estévez Leston: Gino Germani Research Institute (IIGG). Held on January 22 at the Autonomous University of Barcelona (UAB). Video available [here](#).

ILL44 Cultural consumption: between social inequality and digitalization. Argentina and Spain in comparative perspective (2019-2024). Ana Wortman: University of Buenos



Aires (UBA). Held on January 30 at the Complutense University of Madrid (UCM). Video available [here](#).

ILL45 The long term in migrations. Intersectional inequalities and strategies for the sustainability of the lives of older migrant women. María José Magliano: National University of Córdoba (UNC) and National Council for Scientific and Technical Research (CONICET). Held on January 31 at University of A Coruña. Video available [here](#).

INCASI2 Training

One of the objectives of the INCASI2 project is training. Our aim is to provide researchers with theoretical and methodological skills to develop an analytical model on socioeconomic inequalities. This is an interdisciplinary and intersectoral training that we have organized in 15 courses:

- C1 Theoretical perspectives on socioeconomic inequalities
- C2 Comparative research, social models and territorial integration
- C3 Dependency models and analysis of the impact of public policies
- C4 Models of interdependence and social inequalities
- C5 Construction of socioeconomic inequality indicators
- C6 Qualitative methodology for the comparison of social inequalities
- C7 Survey and fieldwork strategies
- C8 Labor inequalities
- C9 Educational inequalities
- C10 Economic inequalities
- C11 Gender inequalities
- C12 Social stratification and social classes
- C13 Intergenerational social mobility
- C14 Migrations and ethnic inequalities
- C15 Public policies

The courses are taught in online format and follow a methodology focused on autonomous learning through the Virtual Campus and based on the materials and activities prepared by the teaching staff. Courses will progressively be initiated from next month and will be open throughout the entire project. We will soon announce the information session that we will organize to present all the details of the training: contents, methodology, enrollment, etc.



ILL Dialogues

INCASI Living Lab: Dialogues



“Situación y medición comparada de la pobreza en América Latina: ¿Una nueva década perdida?”

Coordina: Eduardo Chávez Molina

Palabras de apertura:

Ana Arias. Decana de la Facultad de Ciencias Sociales

Martín Unzué. Director del IIGG

Julian Rebón. Secretario de Estudios Avanzados

Proyecto INCASI

Pedro López-Roldán (Universidad Autónoma de Barcelona)

Sandra Fachelli (Universidad Pablo de Olavide)

Exposición: IIGG

Eduardo Chávez Molina, José Rodríguez y Mariana Sosa

Mesa redonda

Sebastián Waigaris (UNICEF)

Soledad Villafañe (CEPAL)

Cecilia Marzona (OPS)

Enrique M. Díaz (INTA 'Bla...)

Diego Iglesias (Radio con Vos)

Meeting on the topic **Situation and Comparative Measurement of Poverty in Latin America: A New Lost Decade?** held on December 2, 2024 in Buenos Aires, at the Gino Germani Research Institute, including representatives of international organizations and journalists (video available [here](#)).



Workshop on Inequality

On December 6 and 9, 2024, the **Research Workshops on Comparative Inequalities I and II** were held at the Gino Germani Research Institute, where different strategies for comparative research and collaborative publication were shared.

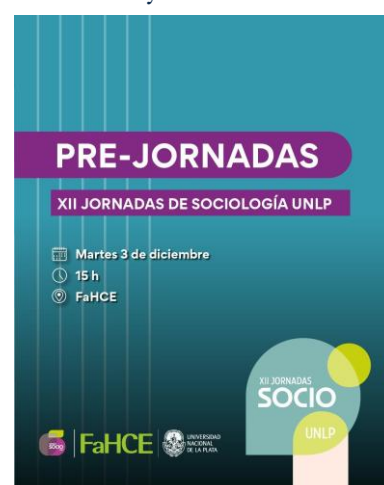
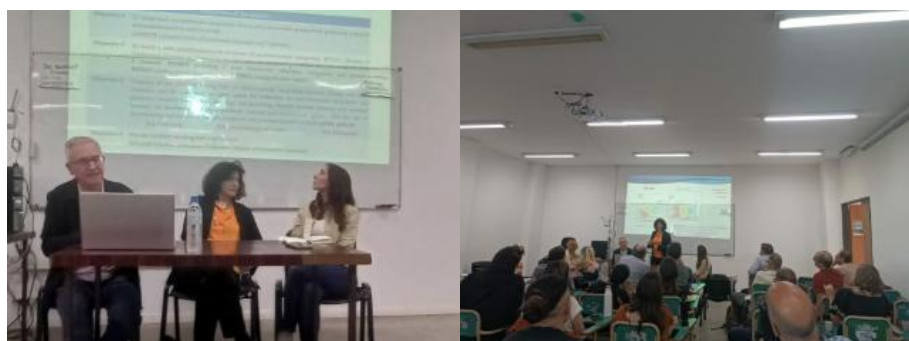


Seminars and Congresses

- ✚ **Albert Navarro-Giné (POWAH, IET-UAB): Direct participation of workers and psychosocial occupational risks: a dialogue between scientific-technical knowledge and that derived from trade union experience.** Co-organized by the School of Public Health of the UCH, INCASI and the Ministry of Health of the CUT. Taught at the School of Public Health on November 12, 2024.



- ✚ **Sandra Fachelli (UPO) and Pedro López-Roldán (UAB). Comparative inequalities between Europe and Latin America: a research model.** Lecture within the framework of the Pre-Conference of the XII Conference on Sociology at the National University of La Plata. Organized by the National University of La Plata. Taught at the National University of La Plata on December 3, 2024.





- ✚ **Manuel Sánchez. Innovation and public policies: possibilities in the face of emerging crises.** FACSO Doctoral Seminar. Co-organized by INCASI2 and the University of Chile. Taught at the University of Chile on January 14, 2025.



- ✚ **Martín Unzué (IIGG-UBA): Many or few doctors? A study on the labor insertion of recent PhD holders in Argentina.** Julio Carabaña Seminar. Co-organized by GRISE and INCASI2. Taught at the UCM on January 15, 2025.



- ✚ **Vincenzo Fortunato, Sandra Fachelli and Pedro López-Roldán. IX SISEC (Italian Society of Economic Sociology) Conference.** Pavia (Italy), January 29-February 1, 2025



Session program "*Inequalities, models of capitalism and contrast policies in Europe and Latin America*".

Communications:

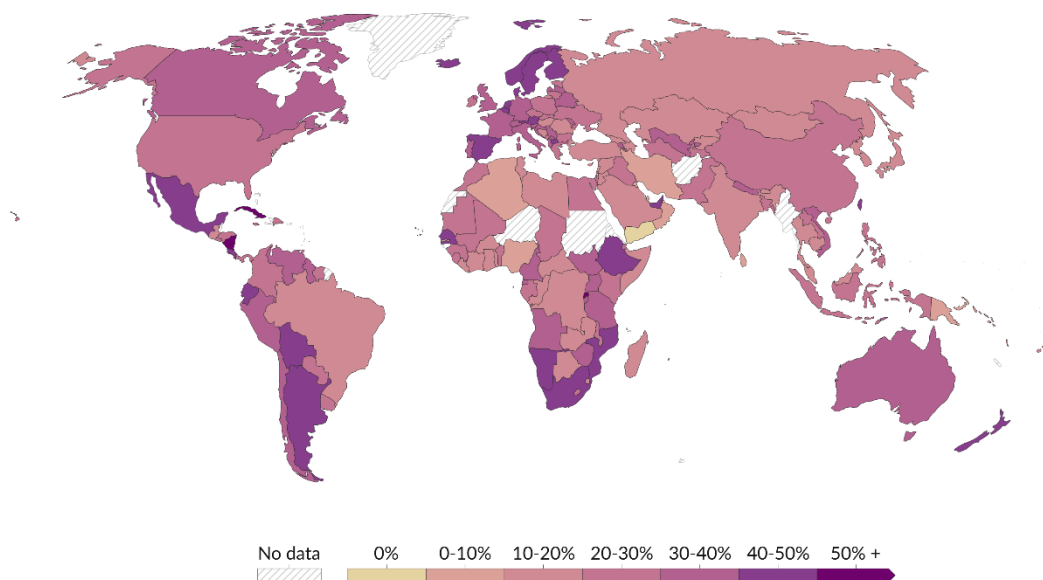
- S. Fachelli, P. López-Roldán. *Inequality in a Comparative Perspective: Social Mobility between European and Latin American Countries*
- Carmela Guarascio, M. Fabiani, F. Sofritti. *Welfare schemes and training programmes for family caregivers working with older people*



The inequality map

Women's Political Empowerment Index 2024

It measures the extent of civil liberties enjoyed by women, their opportunities for participation in civil society and their representation in institutional politics in each country.



Data source: V-Dem (2024)

Note: Only countries with at least one legislative chamber included.

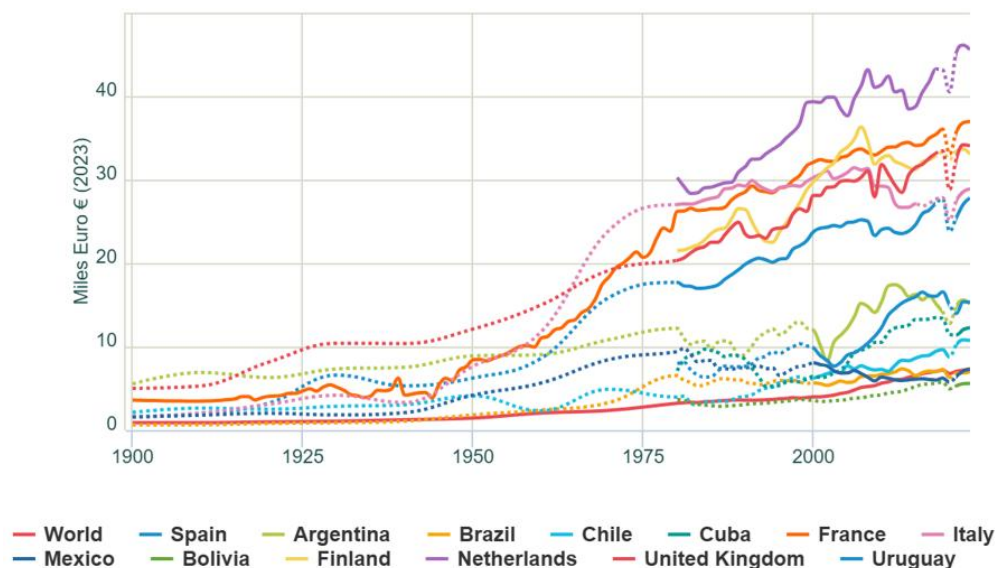
OurWorldinData.org/women-rights | CC BY

Source: Varieties of Democracy project (V-Dem Institute, University of Gothenburg, 2024, [link](#))

The inequality data

Median national income adjusted for purchasing power parity 2023

Global median income has doubled in a century, rising from €3,600 to €7,200 per adult, purchasing power parity adjusted. The evolution of the countries in the INCASI network is shown.



Source: various sources compiled by www.wid.world.



Network Secondments

Secondments are research stays, of a minimum of one month, carried out by the network's researchers at the Latin American and Caribbean or European research centre. The research stays carried out in the last two months are presented:

Secondment	University	Centre	Since	Until
Postdoctoral research stay of Pedro López Roldán (Autonomous University of Barcelona, Spain)	University of Buenos Aires (Argentina)	Gino Germani Research Institute	01-12-2024	31-12-2024
Postdoctoral research stay of Eduardo Chávez Molina (University of Buenos Aires, Argentina)	Autonomous University of Barcelona (Spain)	Institute of Labor Studies	09-12-2024	08-01-2025
Postdoctoral research stay of José Rodríguez de la Fuente (University of Buenos Aires, Argentina)	Autonomous University of Barcelona (Spain)	Institute of Labor Studies	09-12-2024	08-01-2025
Postdoctoral research stay of Sandra Fachelli (Pablo de Olavide University, Spain)	University of Buenos Aires (Argentina)	Gino Germani Research Institute	13-12-2024	12-01-2025
Postdoctoral research stay of Martín Unzué (University of Buenos Aires, Argentina)	Autonomous University of Barcelona (Spain)	Institute of Labor Studies	17-12-2024	16-01-2025
Postdoctoral research stay of Manuel Sánchez Reinón (Complutense University of Madrid, Spain)	Universidad de Chile, Chile	Centre for the Study of Conflict and Social Cohesion	28-12-2024	27-01-2025
Postdoctoral research stay María José Magliano (National University of Córdoba, Argentina)	- University of A Coruña (Spain)	Societies on the Move Team	03-01-2025	02-03-2025
Postdoctoral research stay of Bárbara Estévez Leston (University of Buenos Aires, Argentina)	Autonomous University of Barcelona (Spain)	Institute of Labor Studies	03-01-2025	02-02-2025
Postdoctoral research stay of Pablo Molina Derteano (University of Buenos Aires, Argentina)	Tampere University, Finland	Department of Sociology	07-01-2025	06-02-2025
Postdoctoral research stay of Ana Wortman (University of Buenos Aires, Argentina)	Complutense University of Madrid, Spain	Department of Sociology	07-01-2025	06-02-2025
Postdoctoral research stay of Eduardo Chávez Molina (University of Buenos Aires, Argentina)	University of Calabria (Italy)	Department of Political and Social Sciences	09-01-2025	08-02-2025
Postdoctoral research stay of Martín Unzué (University of Buenos Aires, Argentina)	University of Toulouse Jean Jaurès, Francia	Centre for Study and Research Work Organisation Power	17-01-2025	16-02-2025
Postdoctoral research stay of Pablo Dalle (University of Buenos Aires, Argentina)	Pablo de Olavide University, Spain	Department of Sociology	20-01-2025	19-02-2025
Postdoctoral research stay of Paula Boniolo (University of Buenos Aires, Argentina)	University of Seville, Spain	Department of Sociology	20-01-2025	19-02-2025
Postdoctoral research stay of José Rodríguez de la Fuente (University of Buenos Aires, Argentina)	University of Seville, Spain	Department of Sociology	20-01-2025	19-02-2025
Postdoctoral research stay of Manuel Riveiro (University of Buenos Aires, Argentina)	Pablo de Olavide University, Spain	Department of Sociology	20-01-2025	19-02-2025



Postdoctoral research stay of Julián Rebón (University of Buenos Aires, Argentina)	Middlesex University, Inglaterra	Centre for Enterprise, Environment and Development Research	21-01- 2025	20-02- 2025
---	--	---	----------------	----------------

Article Party



Article Party is an initiative designed to develop articles jointly with colleagues in the network. The aim is to identify interests and lines of research, establishing short-term goals in order to make progress in the production of the article. Besides, it is about celebrating these advances in different ways. On December 18, 2024, in a meeting with numerous colleagues at the IIGG, the following research advances were announced:

- ✚ **Emilio Ayos (IIGG-UBA):** Youth, inequalities and violence. Political-cultural interventions and discussions in comparative perspective.
- ✚ **Paula Boniolo and Sebastián Lemos (IIGG-UBA/CO NICET):** Educational inequalities at the secondary level. Argentina, Brazil, Chile and Mexico.
- ✚ **Joaquín Carrascosa and Bárbara Estévez Leston (IIGG-UBA):** Social capital as a mechanism for the reproduction of inequality: the role of the family, the neighborhood and educational ties in access to first employment.
- ✚ **Eduardo Chávez Molina, Mariana Sosa, José Rodríguez (IIGG-UBA):** Profiles of poverty. Proposal for its approach in recent Argentina.
- ✚ **Pablo Dalle and Julián Rebón (IIGG-UBA):** Inequalities in Motion in Argentina Between Two Crises. From the promise of equality to legitimized inequality.
- ✚ **Rodolfo Elbert and Florencia Morales (IIGG-UBA/CONICET):** Informality, class and gender: a statistical analysis of typologies of labor trajectories (AMBA 2023).
- ✚ **Ezequiel Ipar (IIGG, UBA):** Democracy and inequalities in the context of crisis.





- ✚ **Raúl Jorrat (IIGG-UBA), Pablo Dalle (CONICET/IIGG-UBA) and Sandra Fachelli (UPO):** The role of education in social fluency. Intergenerational class mobility in cohorts between 1943 and 1996 in Argentina.



New Year's Eve Party at the Gino Germani Research Institute (11-12-2024)



- ✚ **Carlos C. Ribeiro (UFRJ), Pedro López-Roldán (UAB), Patricio Solís (Colmex) and Pablo Dalle (UBA):** Educational mobility according to race: comparative analysis between Brazil, Argentina and Mexico.
- ✚ **Victoria Matozo and Pablo Molina Derteano (UBA):** Artificial Intelligence and Work.
- ✚ **Pablo Molina Derteano (IIGG) and Manuel Giovine (UNC):** An Approach to the Space of Argentine University Institutions.

- ✚ **Damián Mux (IIGG) and Sandra Fachelli (UPO):** Types of franchises in the Andalusian labour market.
- ✚ **Santiago Poy (UBA):** Dynamics of Poverty at Work and Segmentation of the Labor Market in Latin America.
- ✚ **Martin Unzué (IIGG-UBA):** The current labor insertion of doctors.
- ✚ **Ana Wortman (IIGG-UBA), Olga Salido Cortés and Maria Esther del Campo (UCM):** Crisis of middle-class societies, old and new cultural consumption and political identities. A comparative study: Madrid and Buenos Aires.





- ✚ **Matías S. Ballesteros, Betina Freidin and Josefina Roques (UBA/CONICET):**
Social inequalities in food consumption: the case of artificial beverages in Argentina.



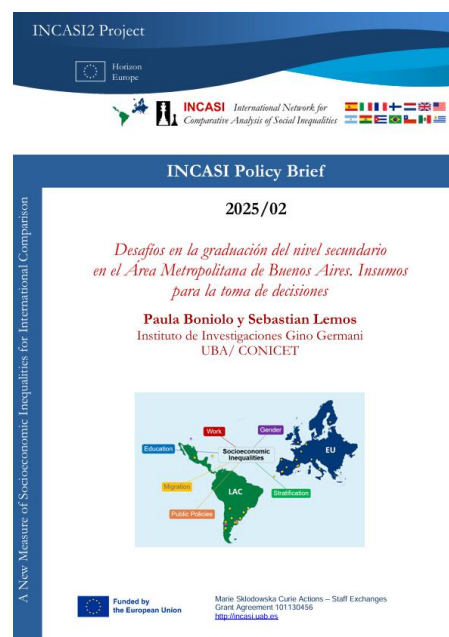
New Year's Eve Party at the Gino Germani Research Institute (11-12-2024)

INCASI Policy Brief

Challenges in Secondary Level Graduation in the Metropolitan Area of Buenos Aires. Inputs for decision-making

by Paula Boniolo and Sebastián Lemos.

In the Metropolitan Area of Buenos Aires (AMBA), the universalization of primary education and expanded access to secondary education have been significant achievements, driven by the National Education Law No. 26,206. However, there are still significant inequalities in graduation rates, conditioned by factors such as social class, gender, geographic location and educational modality (high school, commercial or technical). Despite the progress made, retention and graduation levels remain low, especially among students from disadvantaged socioeconomic sectors. The analysis of AMBA data reveals that technical and





commercial modalities offer better opportunities for educational and labor mobility for students from working class backgrounds, although they pose challenges in terms of repetition rates. Likewise, significant territorial inequalities stand out: proximity to the City of Buenos Aires increases the probability of graduation. To address these challenges, the study recommends strengthening school retention, promoting equity between modalities, adapting policies to territorial characteristics and improving educational infrastructure. In addition, it is suggested to promote pedagogical strategies aimed at developing autonomous skills in students and to prioritize policies with a gender and territorial equity perspective.



Access to rights regardless of the person's condition? On illegal production in Finland

Por Anitta Kynsilehto.

Irregular migration is a highly politicized issue and has been approached as one of the great problems of our time. This report addresses the production of illegality in Finland, i.e., those factors that contribute to people gaining regular immigration status or losing it in the permit renewal process. Based on a study commissioned by the Prime Minister's Office, the report highlights that the number of people without a valid residence permit, more accurately estimated over time, ranges between 3,000 and 4,000 people. Among the main causes of undocumented status are the rigidity of the criteria for obtaining

residence permits and the lack of adequate information during the migration process. Likewise, legislative changes, such as the elimination of legal provisions that protected rejected asylum seekers, have aggravated this problem. Recommendations include making the immigration system more flexible and providing accessible information to prevent undocumented status. Likewise, they believe it would be essential to allow people to change the status of their residence permit according to their circumstances, which will help to design more inclusive public policies and allow all people to better exercise their rights in their country of residence.

From Data to Canvas: Integrating Art and Science to Address Social Stratification and Inequality

by Manuel Herrera-Usagre.

Enhancing science communication capabilities is an important way to foster the relationship between science and society. Data display is the process of creating visual representations of information, which has been crucial for communicating scientific discoveries and gaining understanding of phenomena. The increasing complexity of statistical techniques has made it difficult to effectively communicate scientific results, resulting in a disconnect between



academia and the general public. Through the STRAT-ART initiative, concept tests that use advanced display to represent social mobility data in an accessible and engaging way were developed. Emphasis is placed on the need to improve scientific communication and promote interdisciplinary collaboration between scientists, artists, and policy makers. In addition, recommendations are suggested for evaluating the impact of SciArt initiatives and using art to communicate complex data. Ultimately, it advocates for more effective interactions between art, science, and policy to raise awareness of critical social issues and formulate inclusive policies that address inequality.



Any member of the INCASI network is invited to participate in the next editions of this new initiative, based on the template available [here](#).

Publications

Recent publications of the network linked to the INCASI2 project:

- ✚ Oso, L., & Santaballa, L. (2024). Looking for daisies: The hidden attraction and arrival infrastructures of welcoming spaces in rural Spain. *Urban Planning*, 9(1).
<https://doi.org/10.17645/up.v9i1.8560>

In recent decades, shrinking areas in rural Spain have sought the arrival of newcomers. This migration is driven mainly by economic reasons and is not related to regionalizing or redistribution migration policies. The main contribution of this article is to highlight how the articulation between social agents' (public administrations, third sector, enterprises, migrant communities, and civil society) strategies and infrastructuring practices, within the framework of political, social, and economic structural contexts, has crystalized into specific "welcoming spaces," impacting newcomers' access to resources. The main innovation lies in the identification of an analysis model applied to three different types of "welcoming spaces" of attraction, arrival, and settlement, considering their impact on other mobilities. We have named them in order to represent the connection of rural territories with nature: the waves, the oak, and the river. The analysis reveals the factors that favor but also block access to resources for newcomers. This has allowed us to design an ideal type of welcoming space, which we have called "Daisy," and which beyond its theoretical value, could facilitate the revitalization of shrinking areas. "Looking for Daisies" represents the desire of local social actors, lost in the



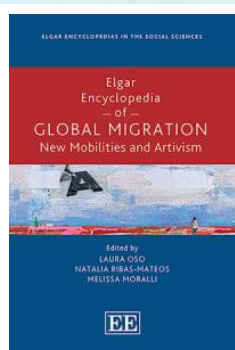
disjointed way in which infrastructuring practices are managed, to reach this goal. Framed under the Horizon 2020-funded program Welcoming Spaces-Investing in "Welcoming Spaces" in Europe: Revitalizing Shrinking Areas by Hosting non-EU Migrants (H2020-SC6-Migration-2019-870952), the research is based on qualitative fieldwork (comprising 75 semi-structured interviews and participant observation), carried out in three localities in two regions of Spain (Galicia and Castilla León).

- ✚ Molina Derteano, P. F., & Giovine, M. A. (2024). Una aproximación al espacio de las Instituciones Universitarias Argentinas. *Revista Argentina de Educación Superior*, 29(16). <https://ri.conicet.gov.ar/handle/11336/250793>

This article presents a first description of the societal space comprising university institutions in Argentina (national, provincial and private universities and institutes), both in the private and public spheres. We work with official data from the Secretaría de Políticas Universitarias (SPU) for the year 2020. This Bourdean analysis allows us to recognize five groups, which operate as clusters in the social space of Argentine University Institutions built on the basis of key variables such as the proportion of students by branch of knowledge, enrollment and its structure, age, gender, educational climate of origin, employment status of new students, academic performance in the first year, and the proportion of non-nationals. Evidence shows a tension between the historically consolidated institutions and the offer for a professional type of training with greater concentrated investment for an early rate of return in the labor market, which is consolidated especially in the new institutions. Private institutions show a higher proportion of graduates than public ones. Within the public institutions, we observe differences between the traditional universities and those of more recent creation.

- ✚ Chávez Molina, E., Rodríguez de la Fuente, J., & Sosa, M. (2024). Perfiles de la pobreza. Propuestas para su abordaje en la Argentina reciente. *INCASI Working Paper Series*, 13. <https://ddd.uab.cat/record/305982>

This working paper aims to understand the change in the profile of social groups that have transitioned into a condition of poverty between 2016 and 2024. As a hypothesis, we understand that in recent years poverty has begun to affect social groups that had greater protection, mainly through labor institutions. Authors work with the EPH microdata from the INDEC at the quarterly and semi-annual level, for the period between 2016 and 2024. As a main result, it is observed that groups of the population that until recently enjoyed a certain type of protection against poverty, such as formal wage earners and retirees, are now seeing their living conditions worsen.



Elgar Encyclopedia of Global Migration. New Mobilities and Activism

Editors: Laura Oso, Natalia Ribas-Mateos, Melissa Moralli

<https://www.e-elgar.com/shop/gbp/elgar-encyclopedia-of-global-migration-9781035300372.html>

This book addresses the subject of international migration, and more specifically human mobility, activism and artistic practices. It discusses emerging concepts such as theories and forms of migration, mobilities in action, and activism in migration contexts. Drawing on case studies from around the world, the chapters examine the full range of key concepts and theories associated with this highly dynamic field.

In recent decades, a range of emerging challenges, from the increasing digitization of social life to the ongoing processes of externalization and internalization of borders, have led scholars and civil societies to inquire into how people conceive, frame, and experience migration, and to attend to emerging forms of resistance and justice regarding mobility. This Encyclopedia engages with critical epistemologies and practices to provide a comprehensive survey of the field of global migration, activism, and cultural production. The book features contributions from INCASI network collaborators.

Call for papers

+ Call for papers

Labor Market Comparison in Europe and Latin America. Between protection and laissez-faire

The aim of the dossier, and what is expected of the proposals, is to contribute to the analysis and interpretation of the most recent dynamics of the labor market, adopting if possible a comparative perspective, within the framework of global socio-economic changes, an important part of which entails profound modifications in the structure of employment, at different levels of qualification. The processes of automation and robotization in employment, the utilization of artificial intelligence, and the management of business risks play an important role in this context.

Coordinators:

Eduardo Chavez Molina (IIGG-UAB/UNMDP)

Renata Semenza (Università degli Studi di Milano)



Call for papers

Relations, Inequalities and Intersections in Transnational Care between Latin America and Europe

The broad objective of the monograph is to analyze care relations and inequalities in transnational families in post-pandemic landscapes, of care deficit and aging in Europe, and of socio-political crisis and dismantling of welfare structures in Latin America. From an innovative approach that combines intersectional, transnational and life-cycle perspectives, the book seeks to explore the strategies of care provision and social protection deployed by transnational families in different geographical, cultural and institutional spaces, and their unequal impact on the well-being and psychosocial development opportunities of their members.

Publishers:

Laura Oso (University of A Coruña and CISPAC, Spain)

Maria José Magliano (CONICET and National University of Córdoba, Argentina)

Andrea Souto García (University of A Coruña and ESOMI Spain)

Other news

-  **Lucila Finkel Morgenstern, appointed Director General of New Forms of Employment, an agency attached to the Secretary of State for Labour of the Ministry of Labour and Social Economy (Government of Spain).** More information [here](#) or [here](#).
-  **Manuel Herrera-Usagre, selected by the Government of Spain to advise them on improving the design of public policies.** More information [here](#).
-  **Interview with Eduardo Chávez Molina, regarding the impact of the industry on social mobility in Argentina.** Full interview [here](#).
-  **Journalistic article by María Fernández Mellizo-Soto (UCM), entitled *Las consecuencias de no financiar la universidad pública*.** Full article [here](#).



Upcoming activities

✚ **VIII Seminario Internacional Desigualdad y Movilidad Social en América Latina**, March 24-26, 2025. The DEMOSAL Network organizes the eighth edition of its international seminar in Rio de Janeiro next March. Instituto de Estudos Sociais e Políticos da Universidade do Estado do Rio de Janeiro (IESP-UERJ).

✚ **Second INCASI Global Meeting**, March 27-28, 2025. Rio de Janeiro, Brazil.
The Mid-Term Meeting (a monitoring of the progress of the project by the European Commission) will be held.



Credits

INCASI Newsletter is a publication edited by the Project Coordination INCASI2 with the participation of different people from the network. We are particularly grateful for the collaboration of the members of the UPO's DINAMOS Group and especially for the coordination work of Celeste Sánchez.

In alphabetical order:

Clara Barriuso
Sandra Fachelli
Ana Teresa Fernández

Pedro López-Roldán
Celeste Sánchez
Cristian Segura-Carrillo

Document published under [a Creative Commons](#) license, anyone is free to copy, distribute or publicly communicate the work, in accordance with the following conditions:



Recognition



Non-Commercial



No derivative works

<http://incasi.uab.es>



INCASI *International Network for
Comparative Analysis of Social Inequalities*

