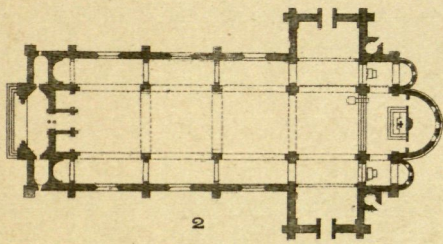
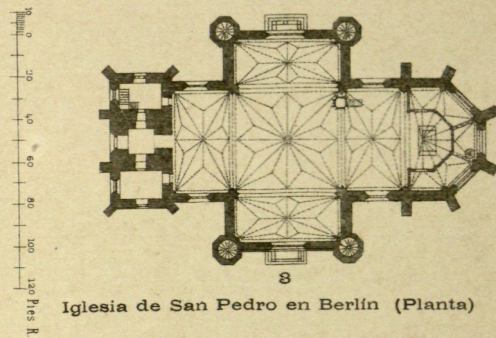


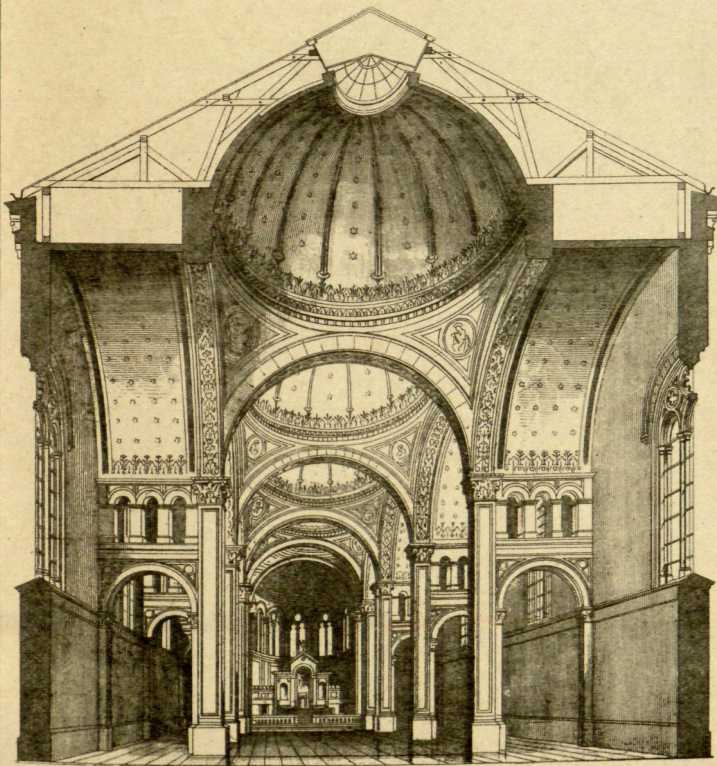
Fachada lateral de la iglesia de San Miguel en Berlín (Soller)



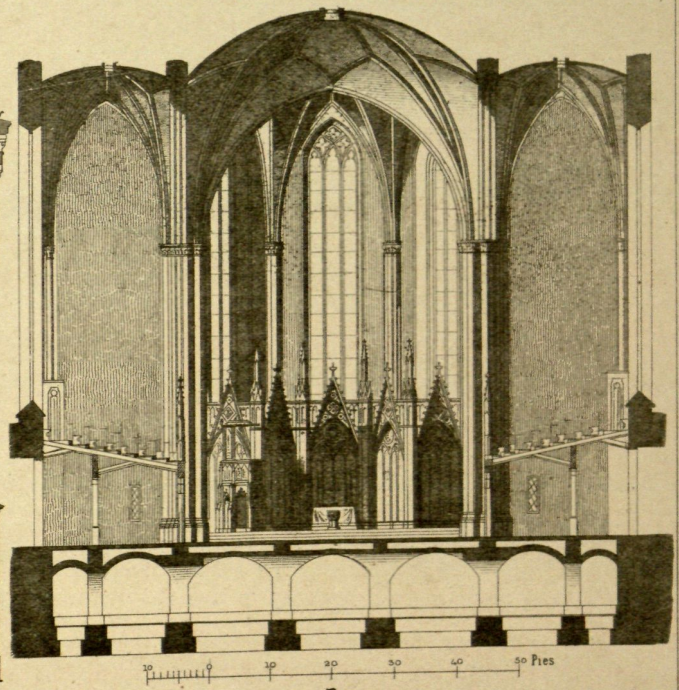
Iglesia de San Miguel en Berlín (Planta)



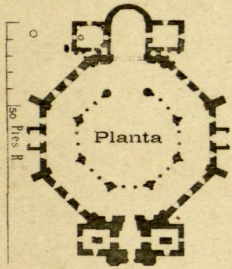
Iglesia de San Pedro en Berlín (Planta)



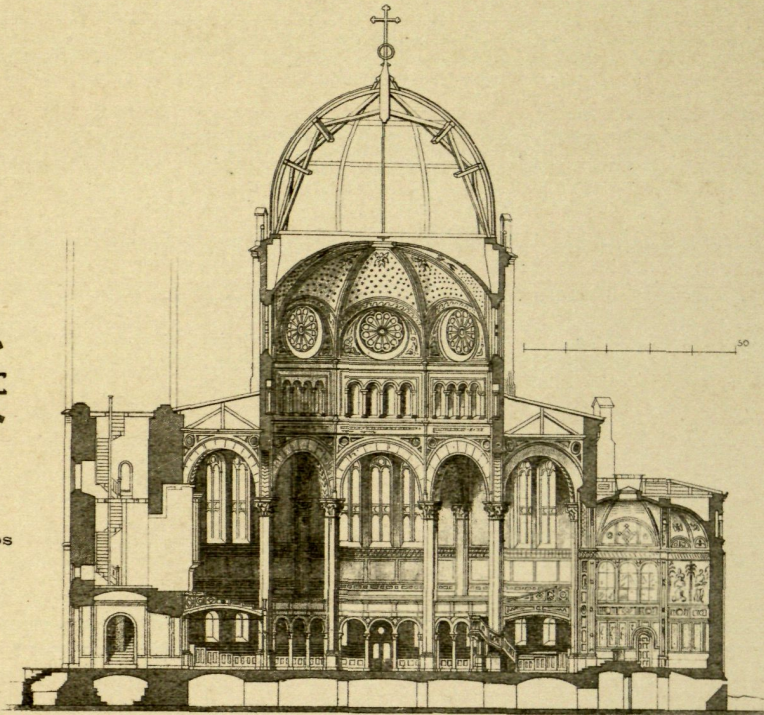
Iglesia de San Miguel en Berlín.—Sección trasversal



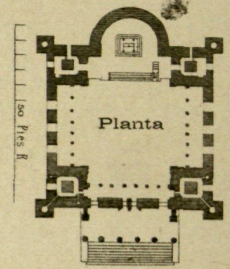
Iglesia de San Pedro en Berlín (Strack).—Sección trasversal



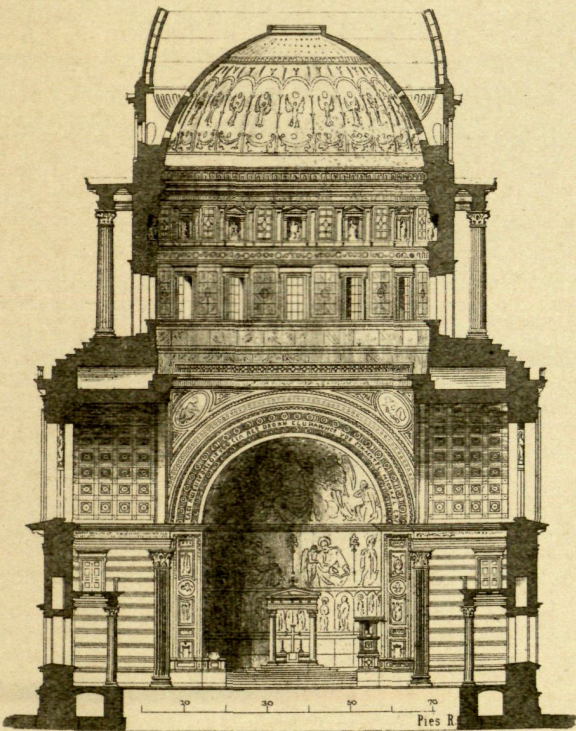
1
Iglesia de San Marcos
en Berlín.



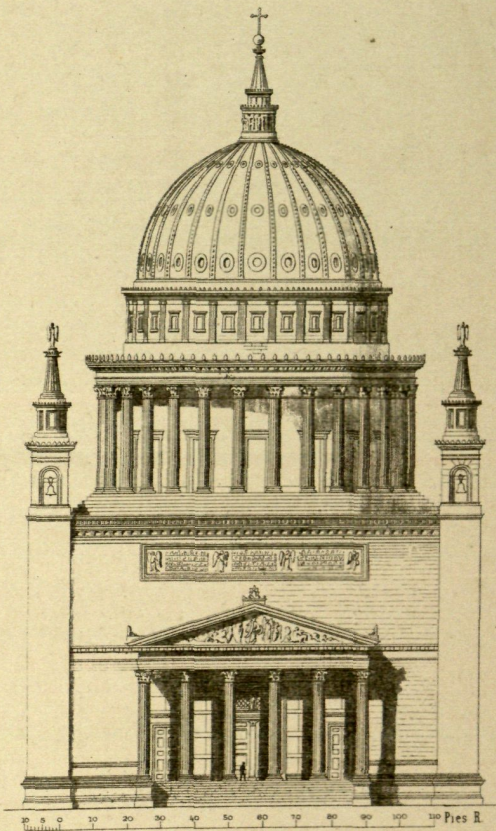
2
Iglesia de San Marcos en Berlín (Stüler)



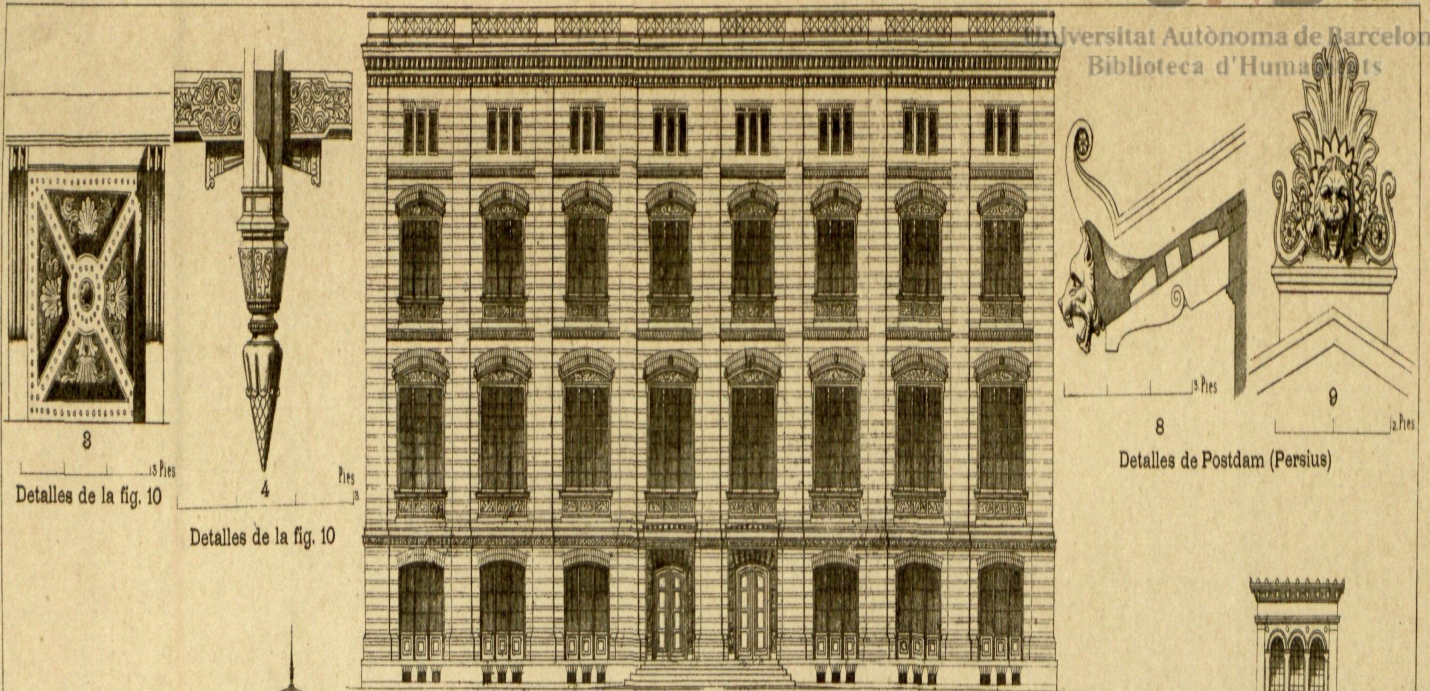
3
Iglesia de San Nicolás
en Potsdam.



4
Iglesia de San Nicolas en Potsdam. Sección trasversal



5
Iglesia de San Nicolás en Potsdam. Fachada

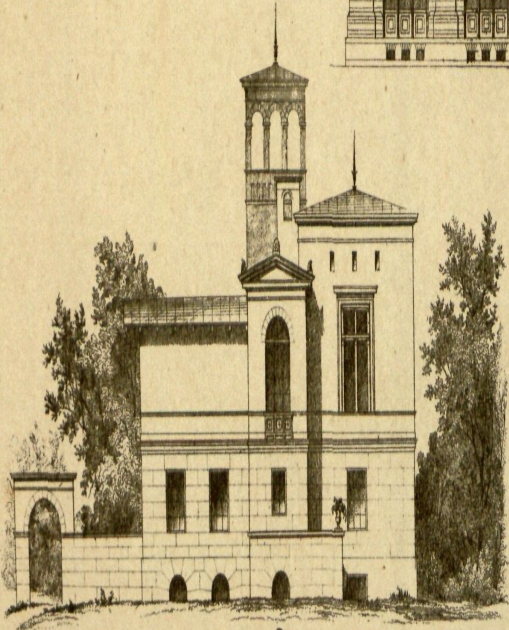


Detalles de la fig. 10

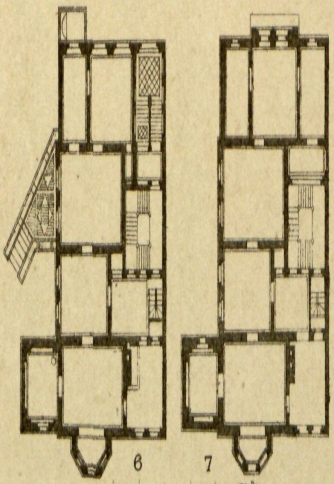
Detalles de la fig. 10

Detalles de Postdam (Persius)

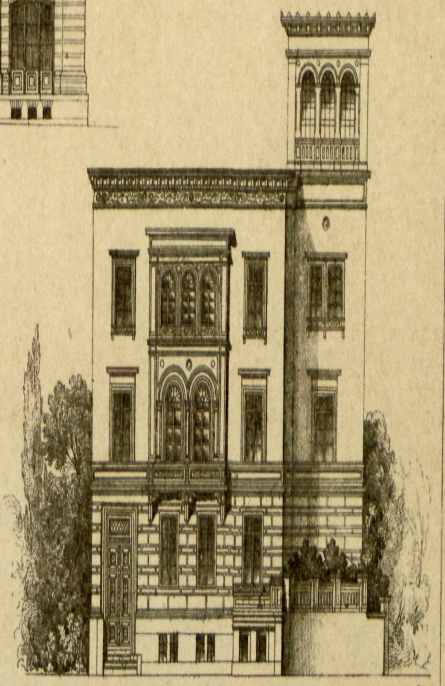
Academia de Arquitectura en Berlín (Schinkel)



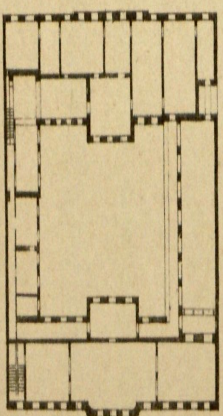
Villa Schöningh cerca de Postdam (Persius)



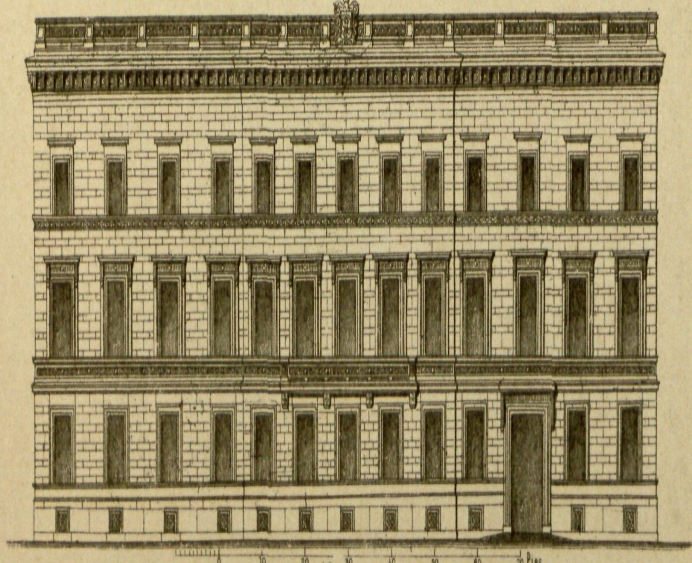
Plantas de la fig. 5



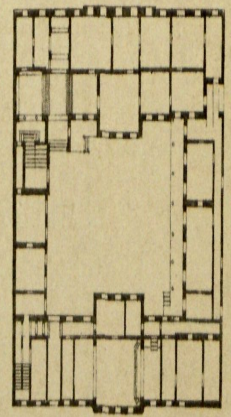
Casa particular en Berlín (Hitzig)



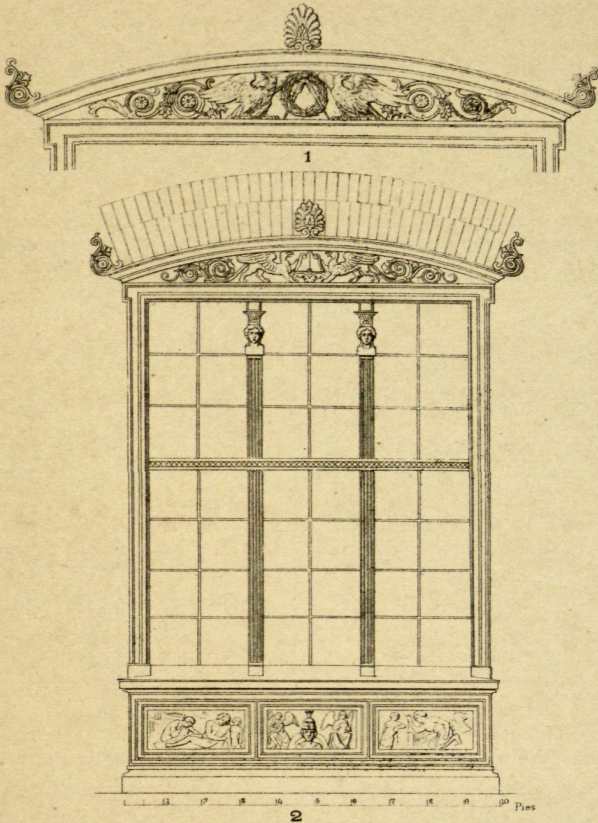
Planta de la fig. 10



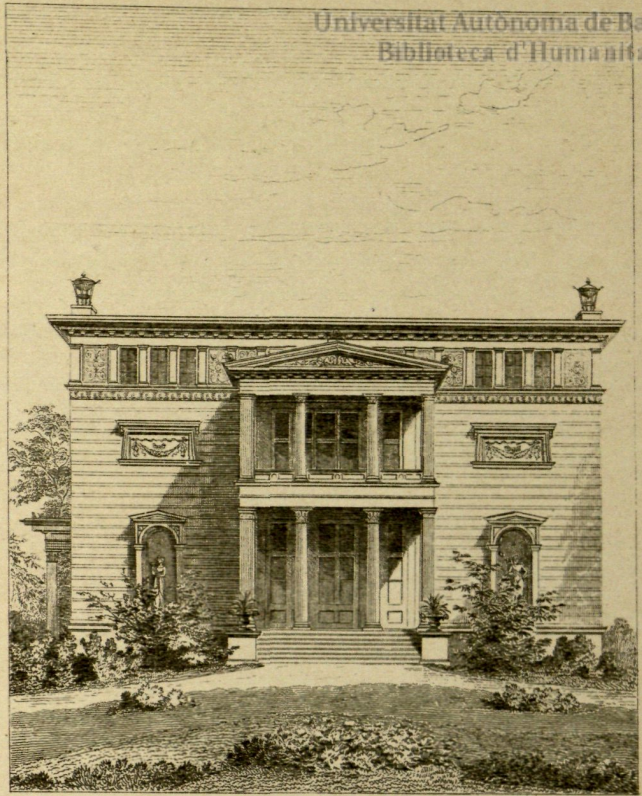
Hotel de huéspedes ruso en Berlín (Knoblauch)



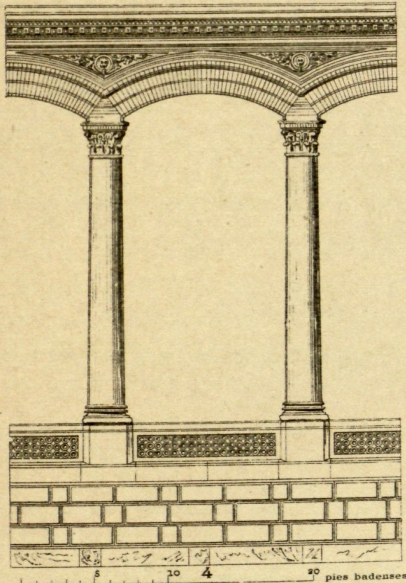
Planta de la fig. 10



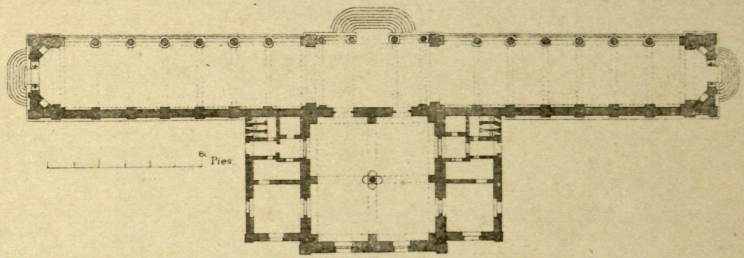
Ventanas de la Academia de construcción en Berlín



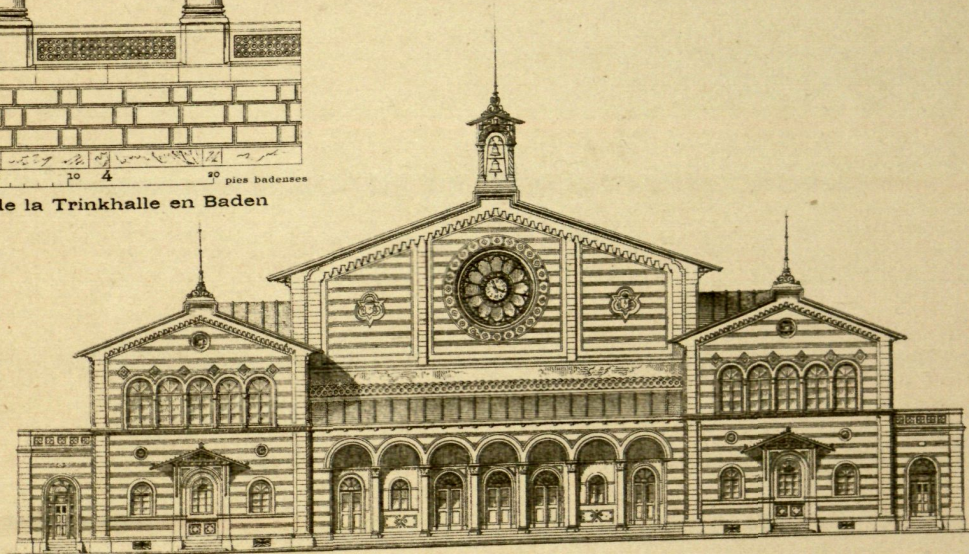
Villa Bleichroder (Gropius y Schmieden)



Arco de la Trinkhalle en Baden

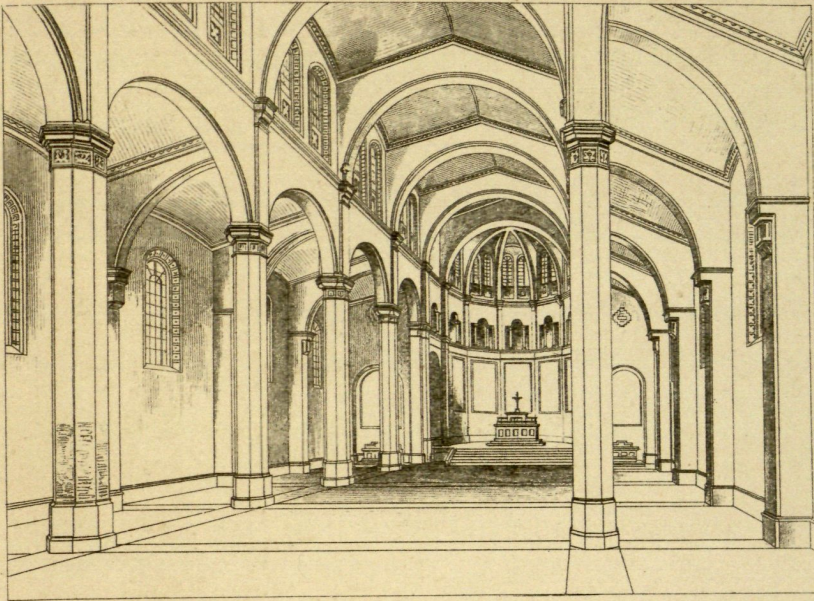


La Trinkhalle (galería de bebidas) en Baden (Hübsch)

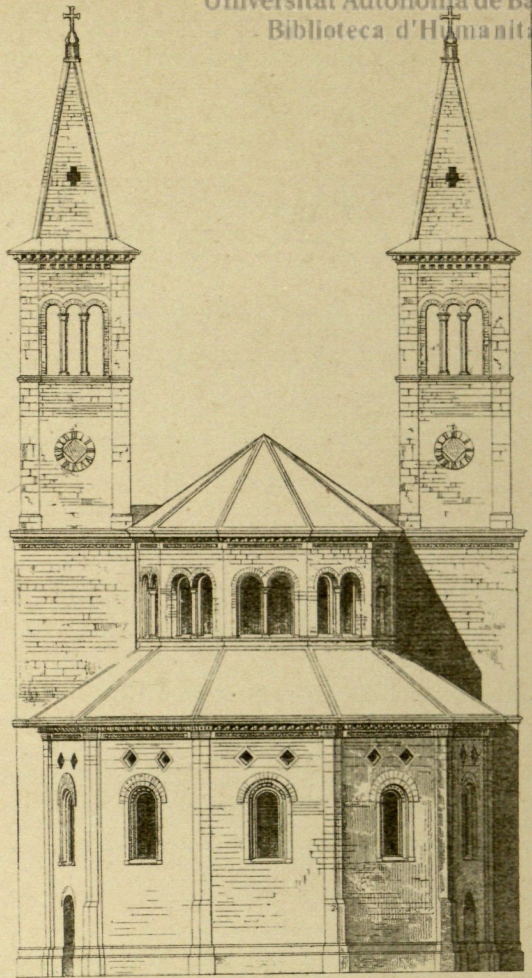


Estación del ferrocarril en Munich (Burklein)

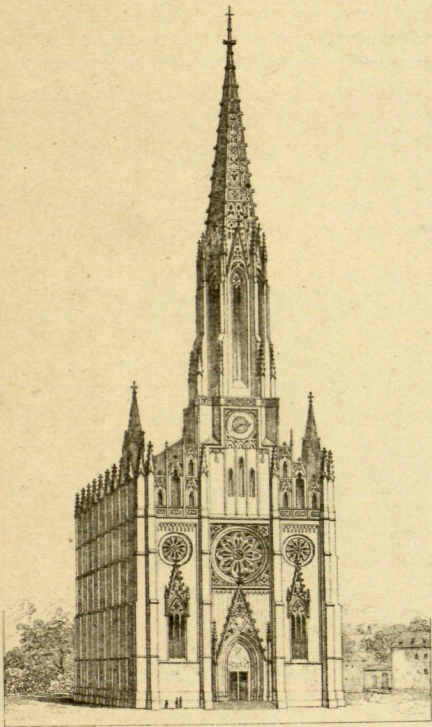
10 0 10 20 30 40 50 60 70 80 90 100 110 120 130 140 150 160 170 pies bávaros



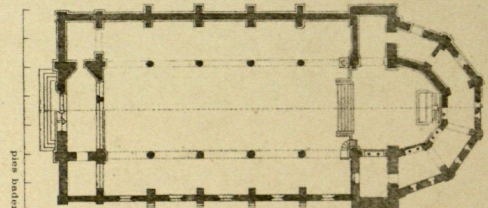
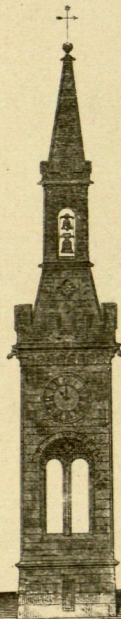
1
Iglesia de Bulach (Hübsch)



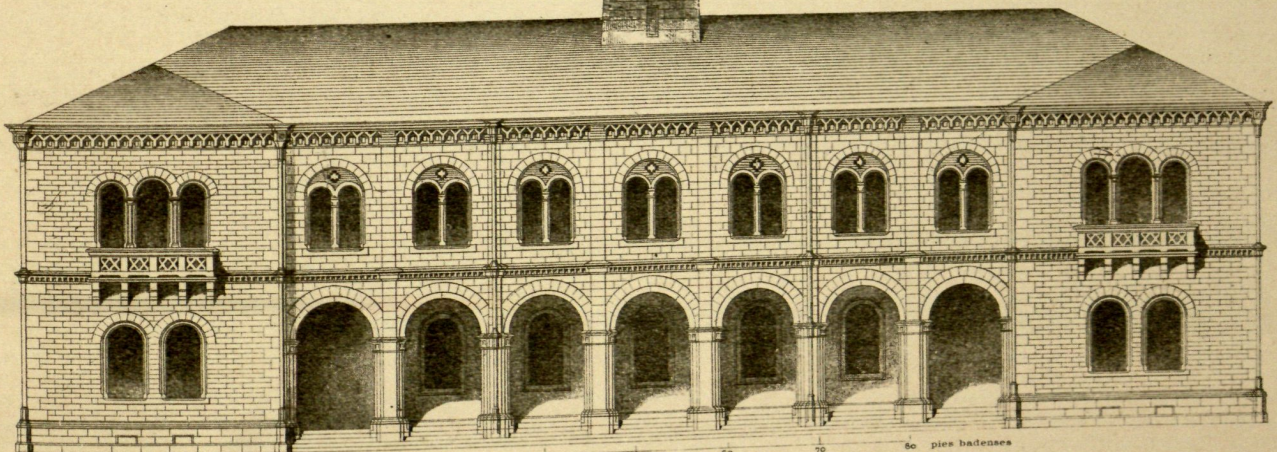
2
Iglesia de Bulach. Abside (Hübsch)



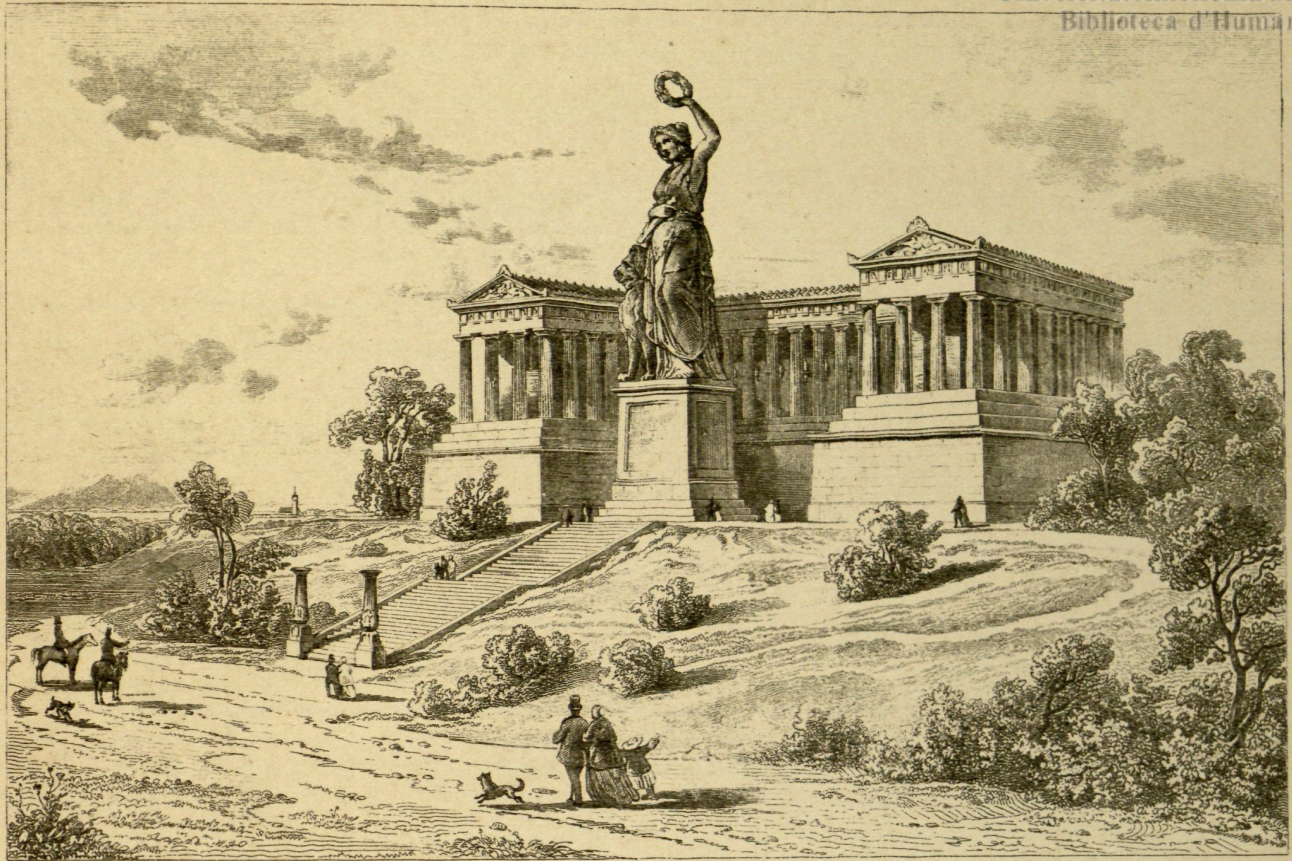
4
Iglesia de Au en Munich (Ohlmüller)



3
Planta de la fig. 2

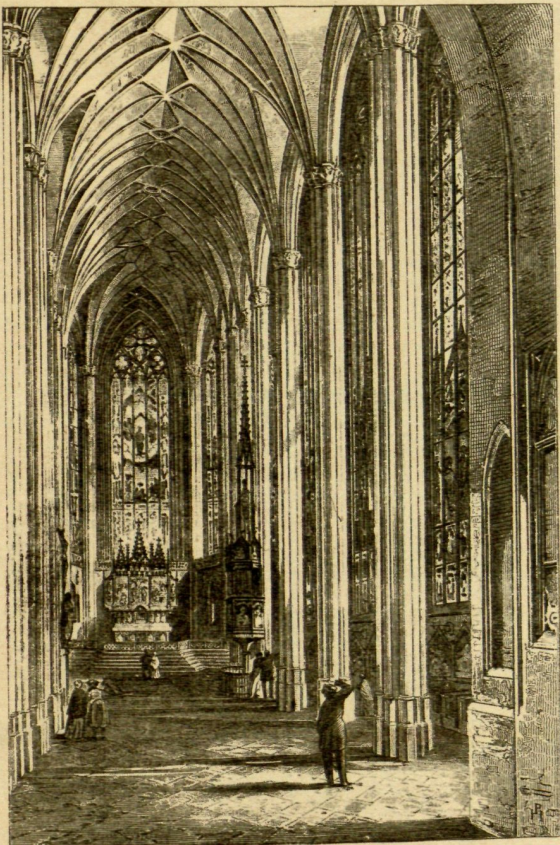


5
Estación del ferrocarril en Friburgo (Eisenlohr)



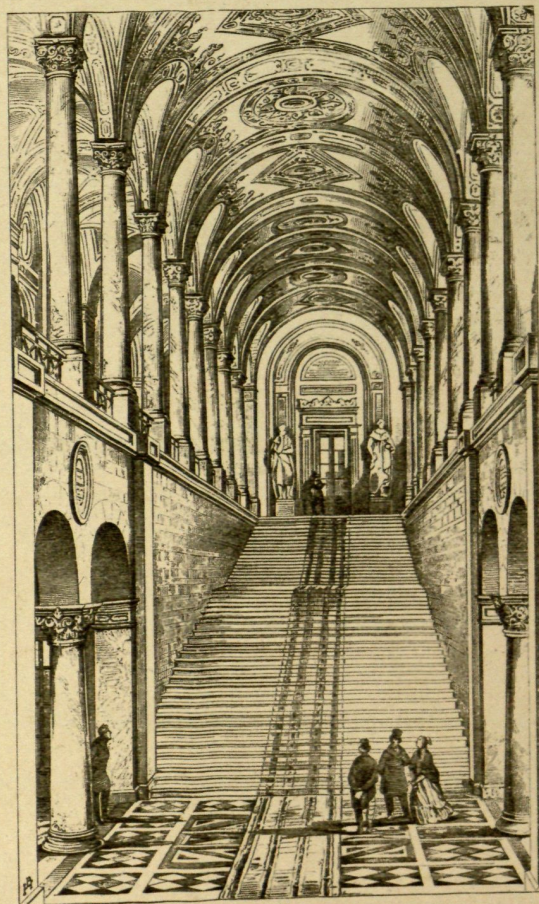
1

Monumento de las glorias nacionales de Baviera en Munich (L. de Klenze)



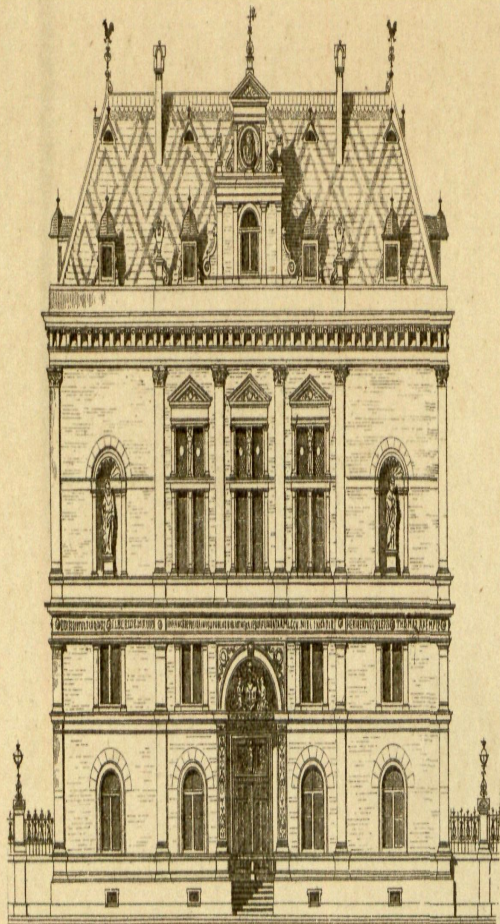
2

Iglesia del arrabal Au (Ohlmüller)



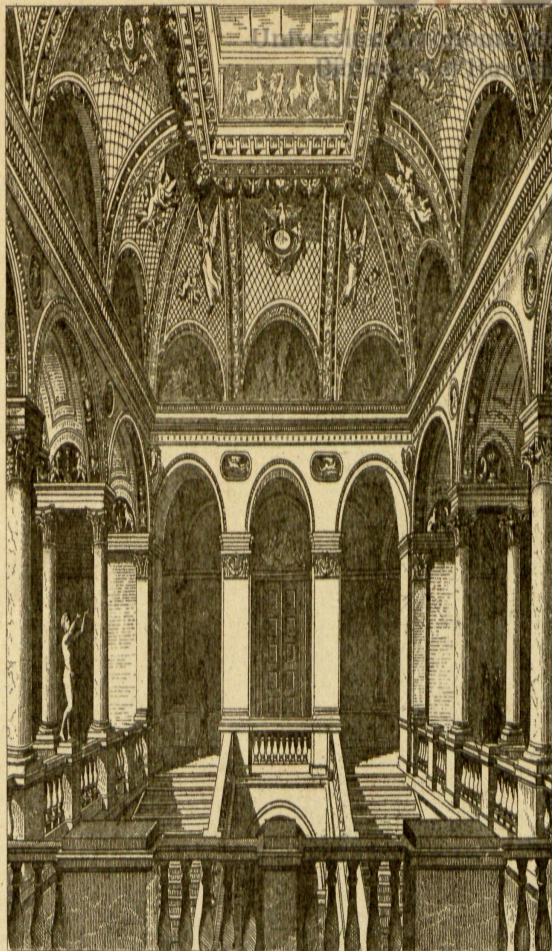
3

Escalera de la Biblioteca de Munich (Fr. de Gärtner)



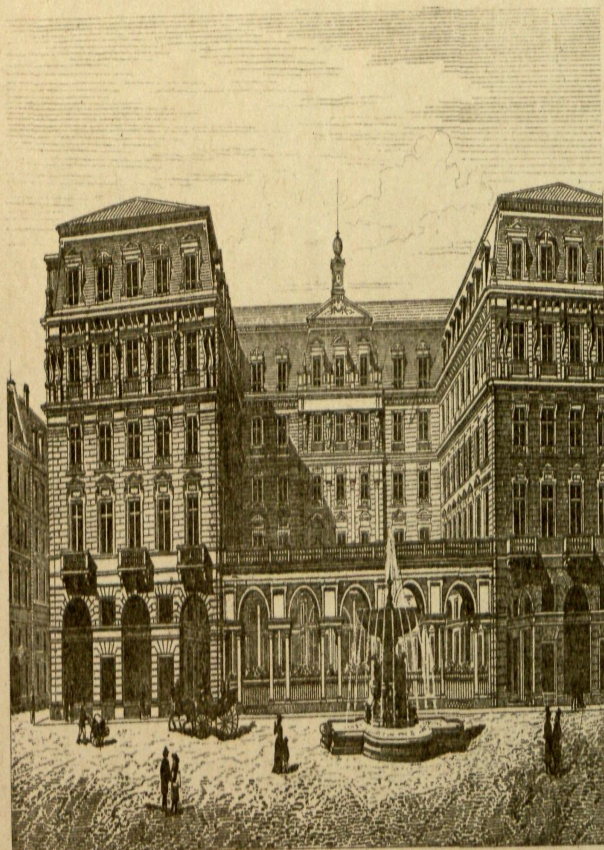
1

Biblioteca de la Escuela de administración. Colonia (Rachsdorff)



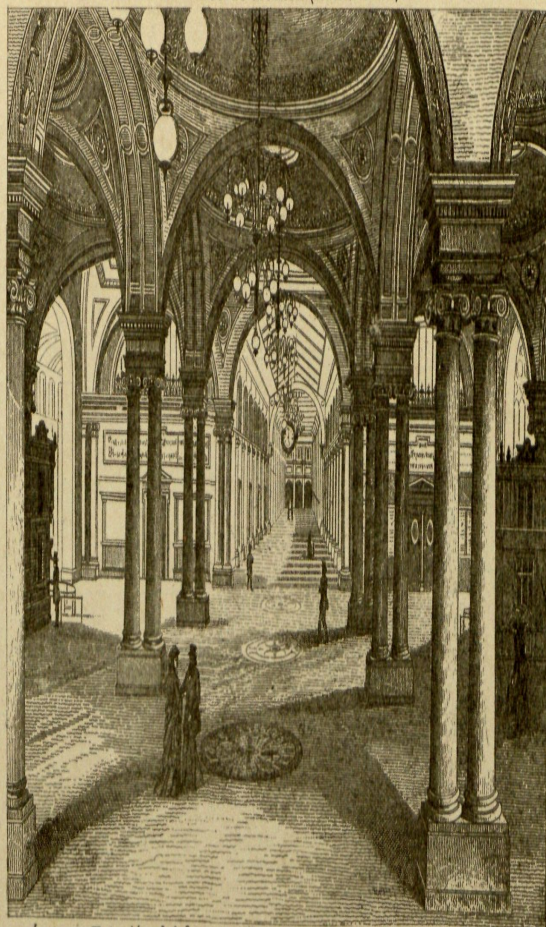
2

Politécnico de Munich (Neureuther)



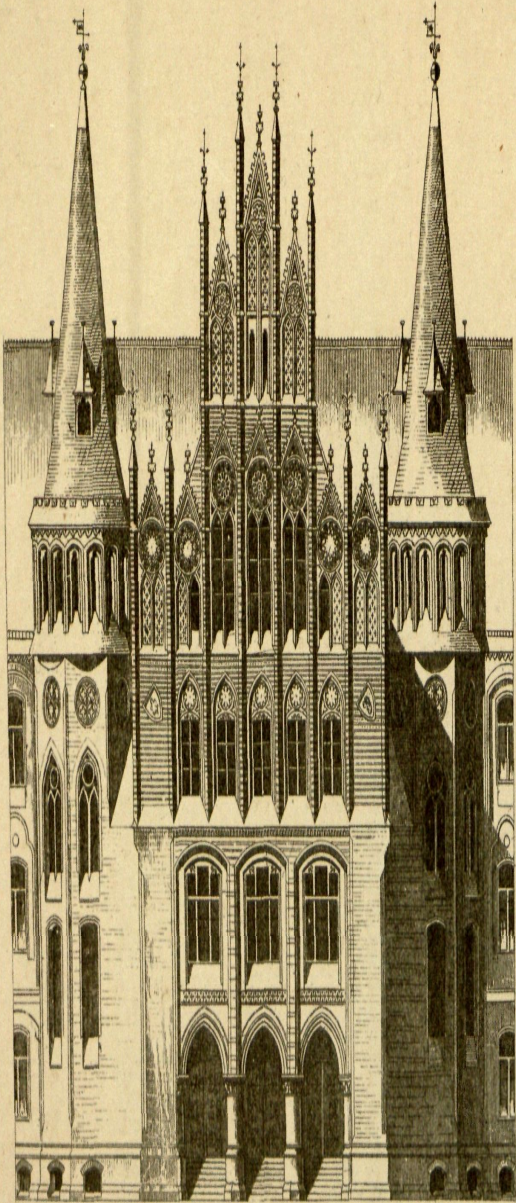
3

Hotel de Francfort (Milius y Bluntschli)

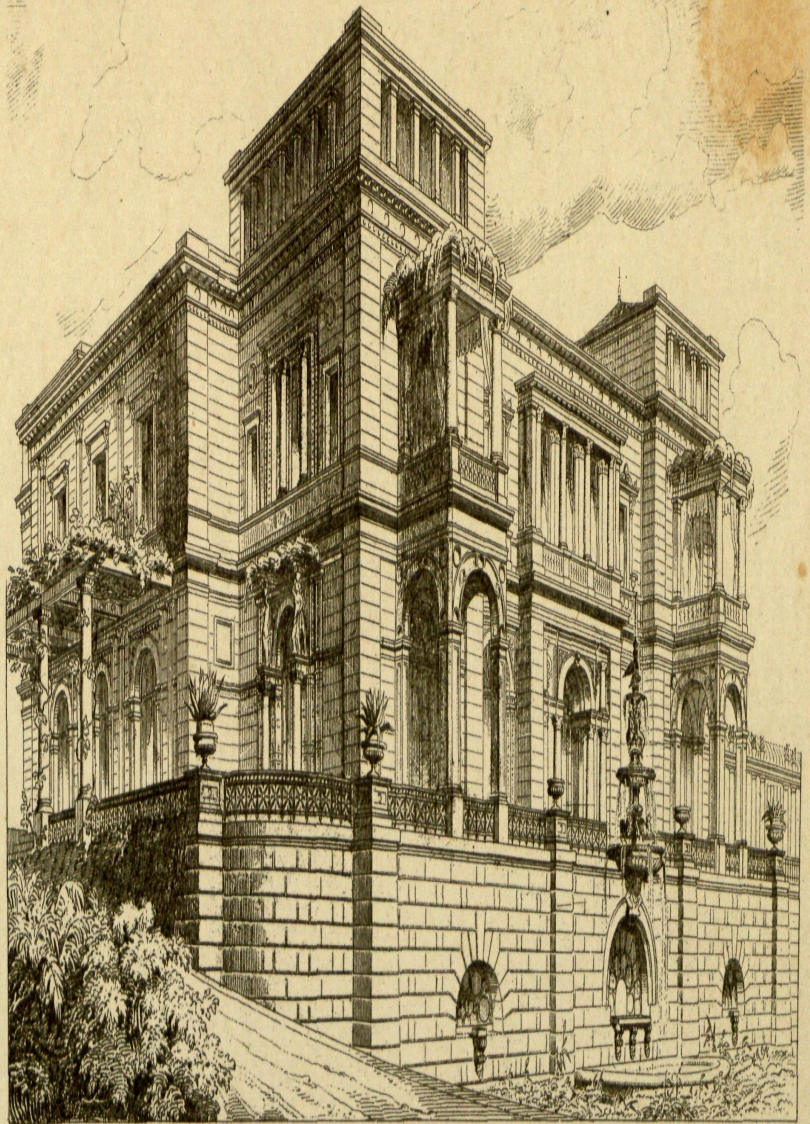


4

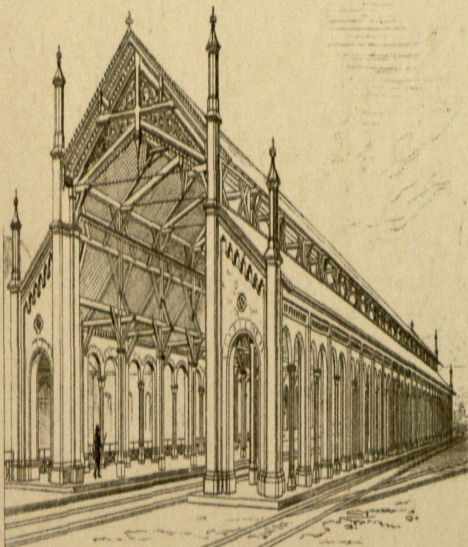
Estación del ferrocarril en Stuttgart (Moriok y Wolff)



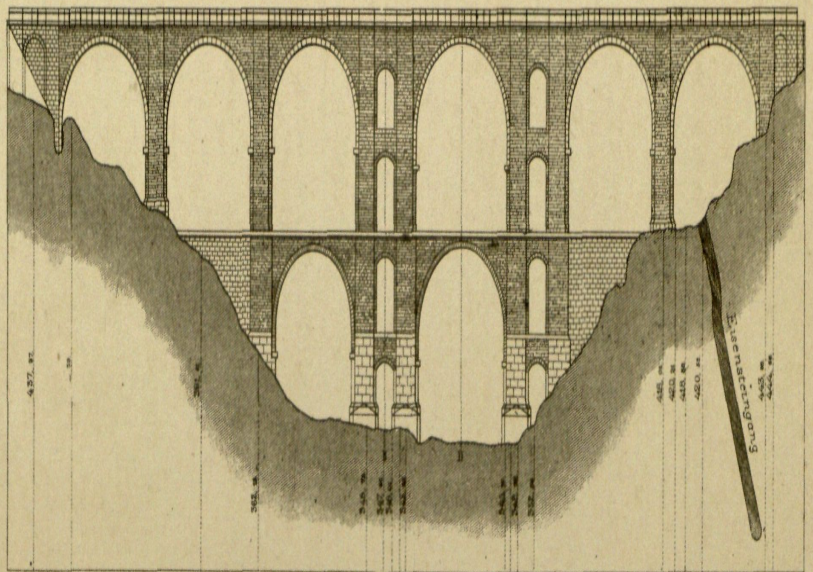
1
Gimnasio de Hildesheim (Hase)



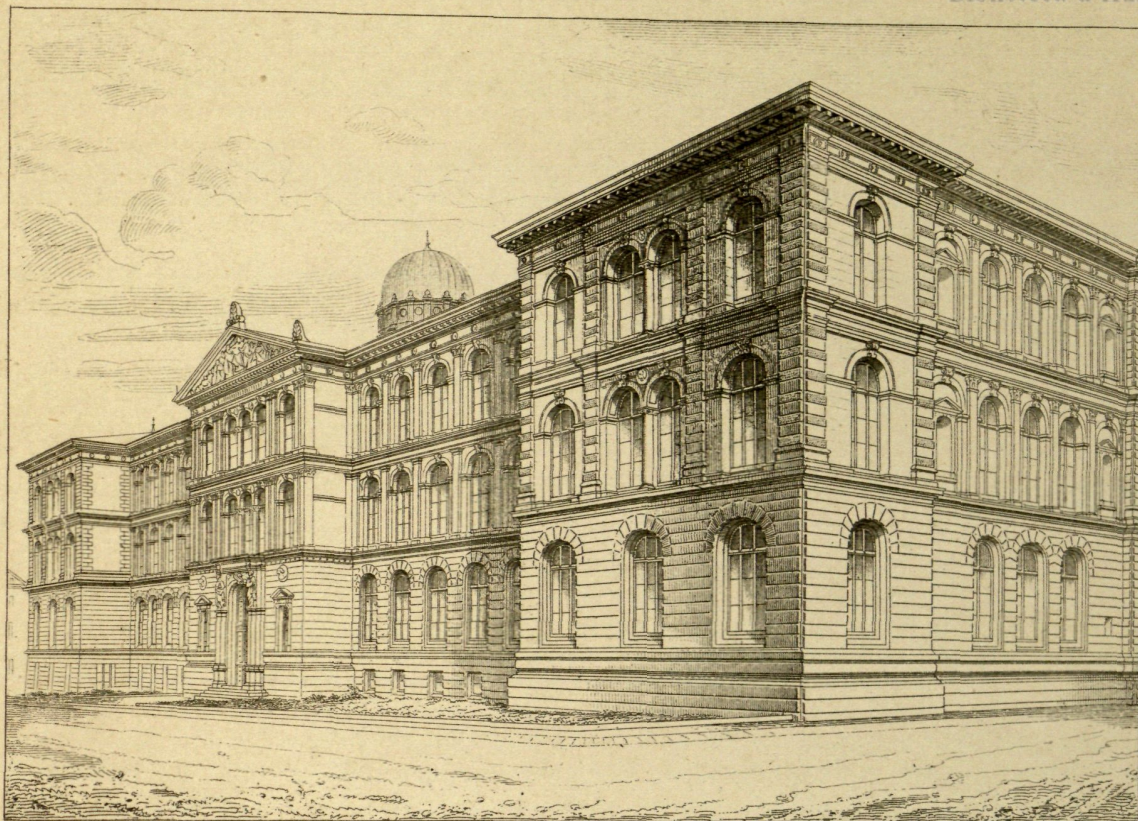
2
La Villa real cerca de Berg (Leine)



8
Tinglado en la cabeza de la línea del ferrocarril de Friburgo (Eisenlohr)

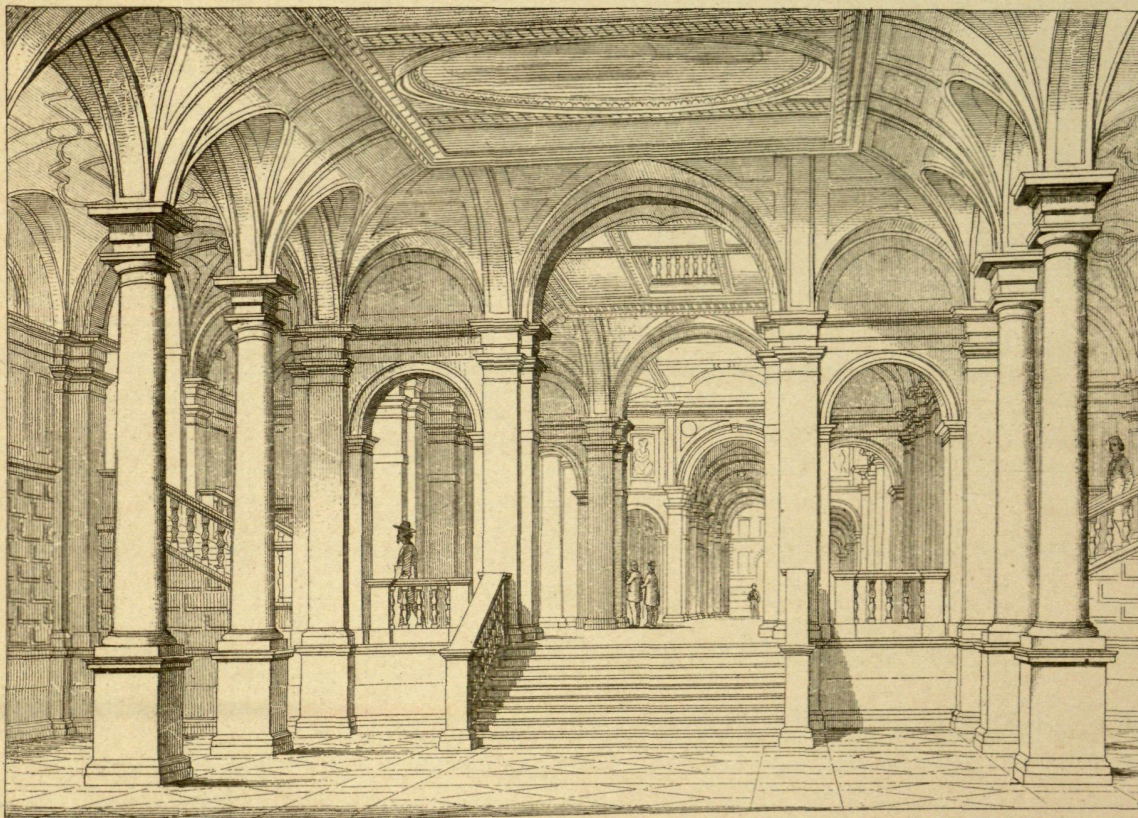


4
Viaducto del valle del Elster



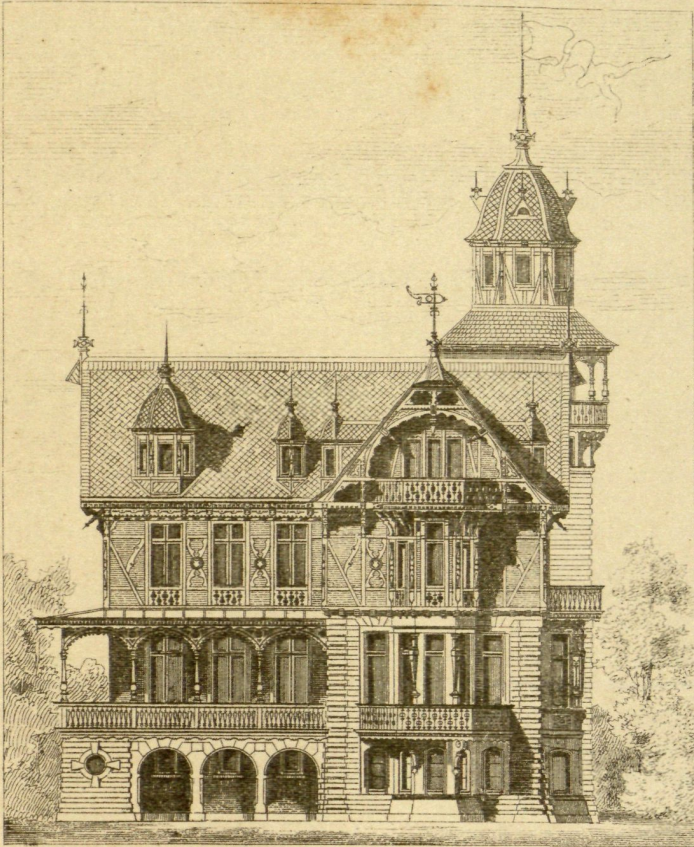
1

Politécnico en Stuttgart (Egle)



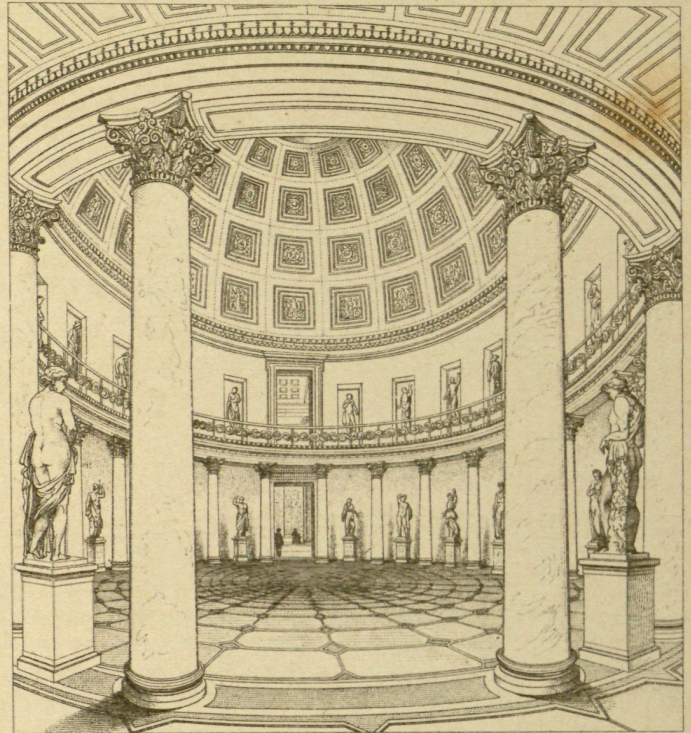
2

Vestíbulo del Politécnico en Zurich (Semper)



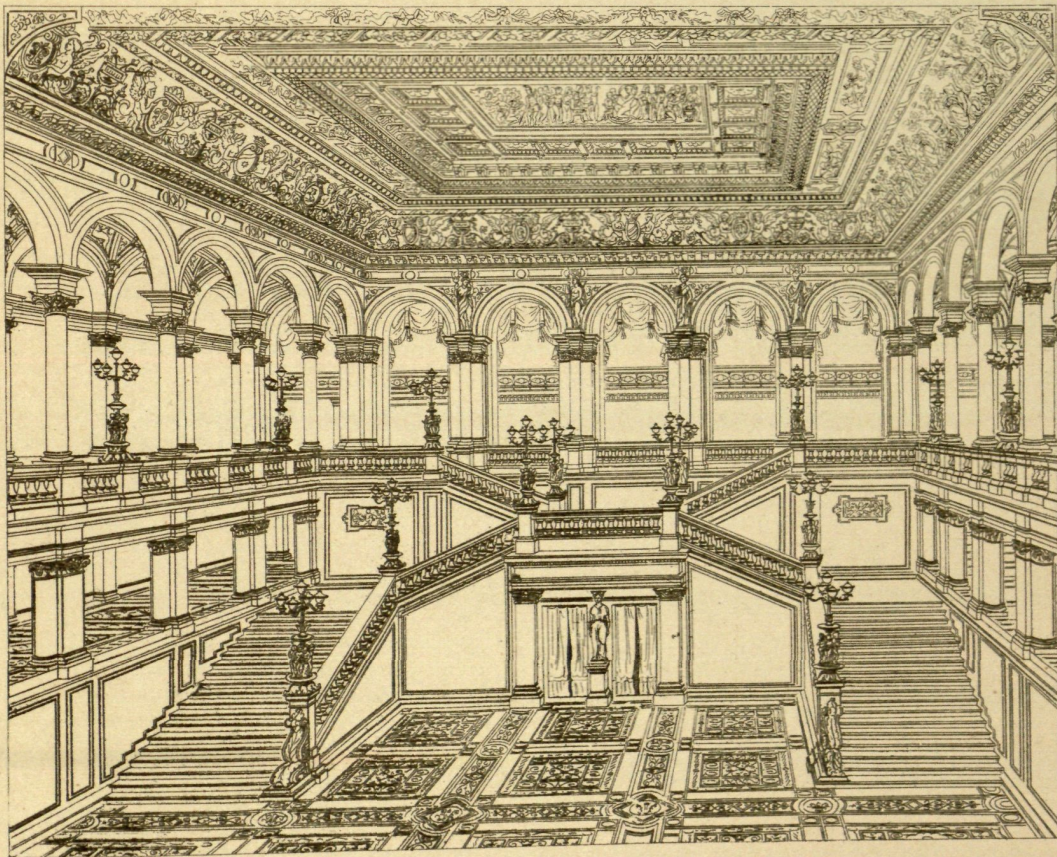
1

Casa de campo (Rachsdorff)



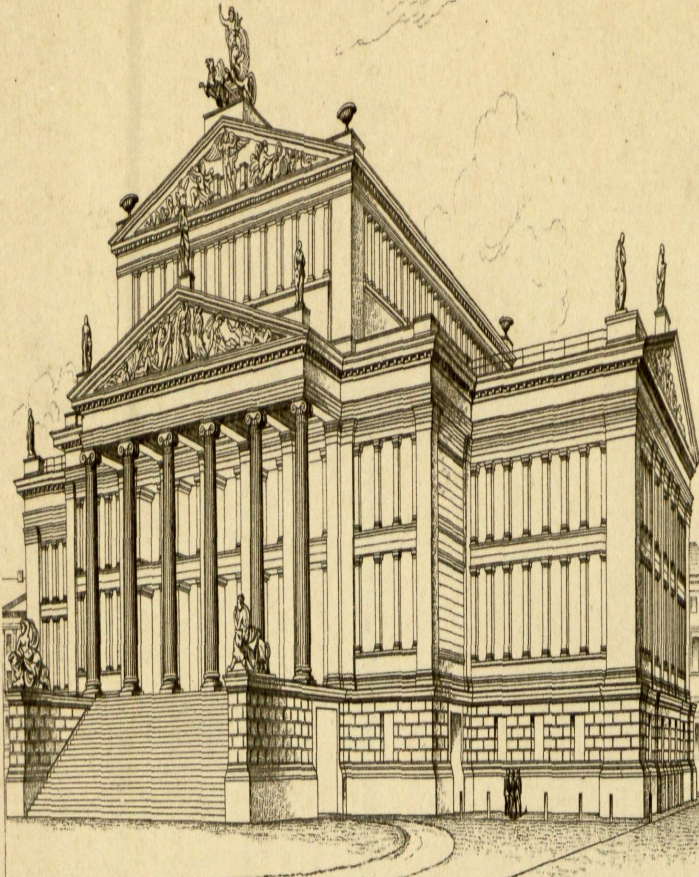
2

Rotonda en el Museo de Berlin (Schinkel)



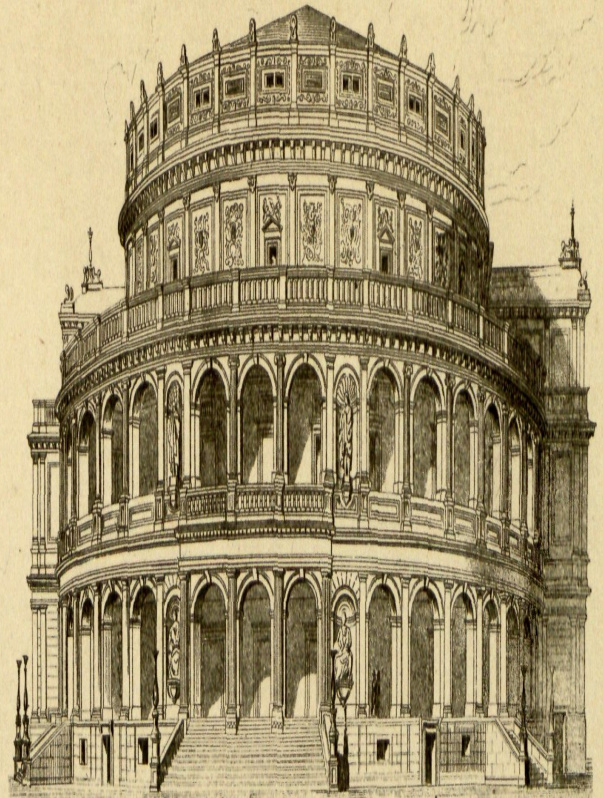
3

Teatro de Francfort (Lucae)



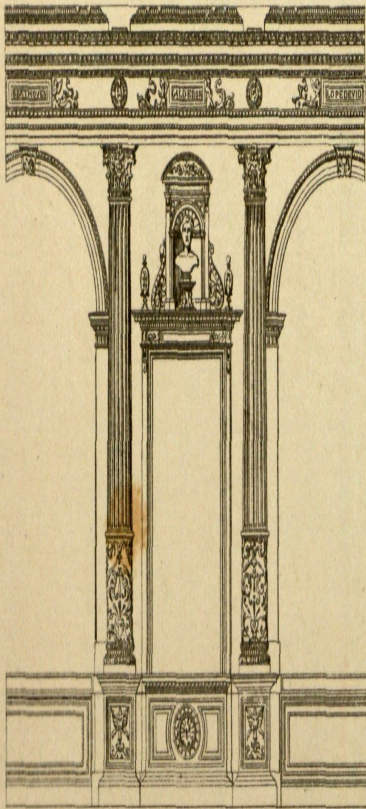
1

Teatro dramático de Berlín (Schinkel)



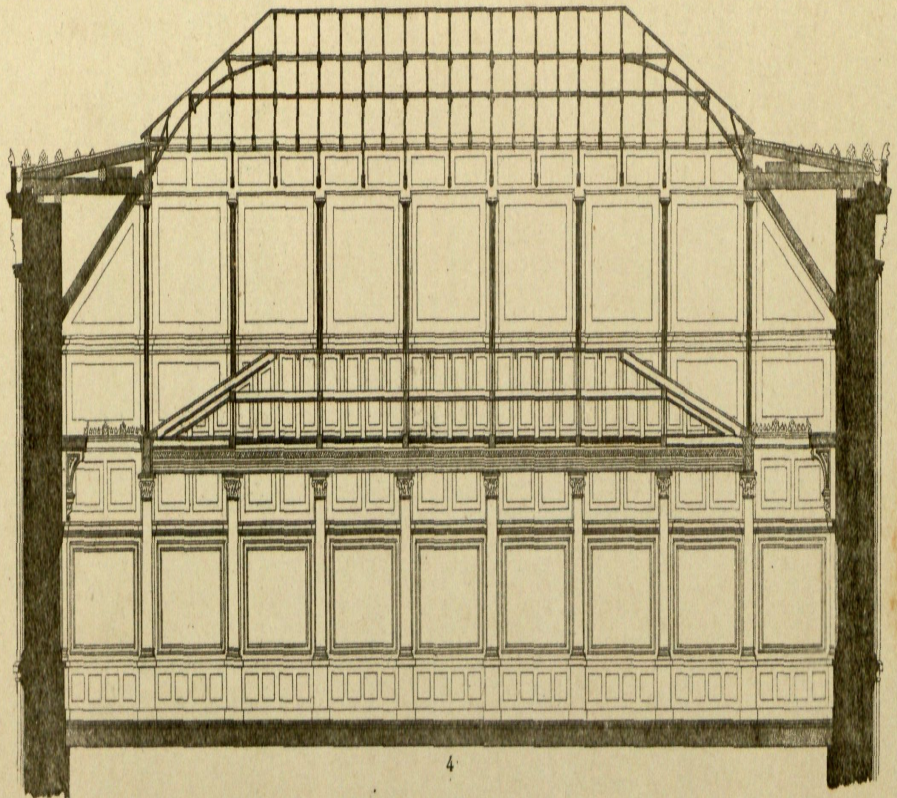
2

Teatro de Dresde (Semper)



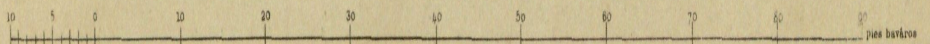
8

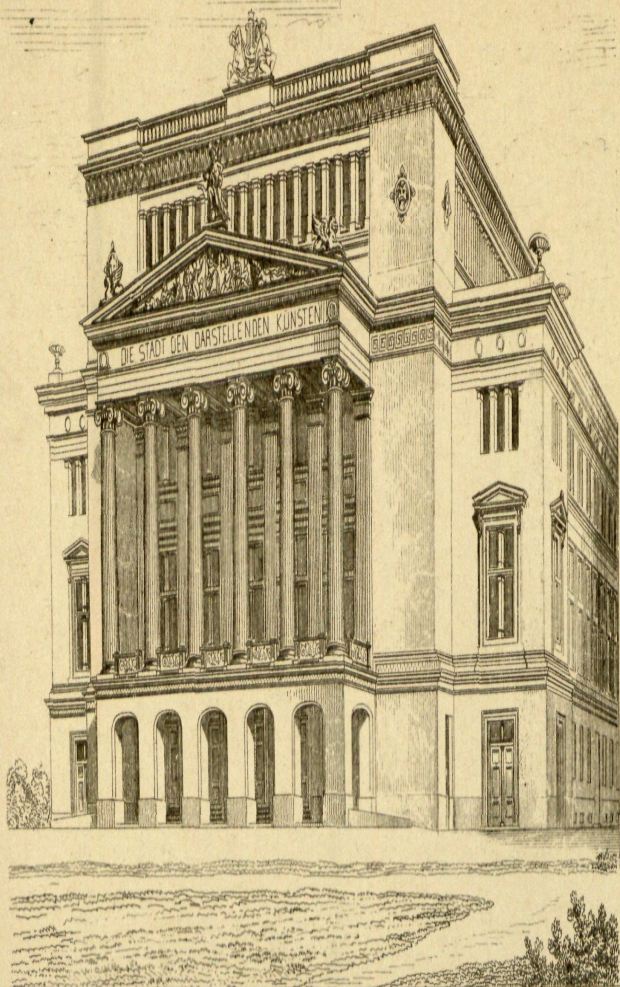
Del vestíbulo del teatro de Dresde



4

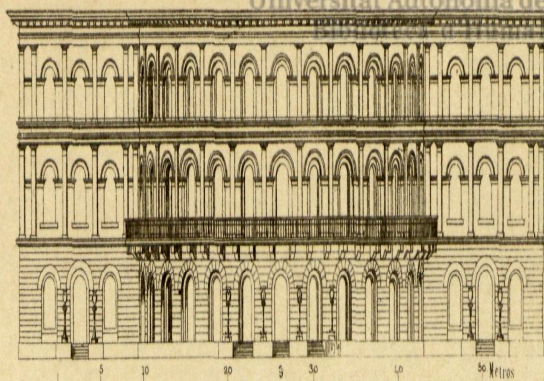
Sala Rottmann en la Nueva Pinacoteca de Munich (Voit)





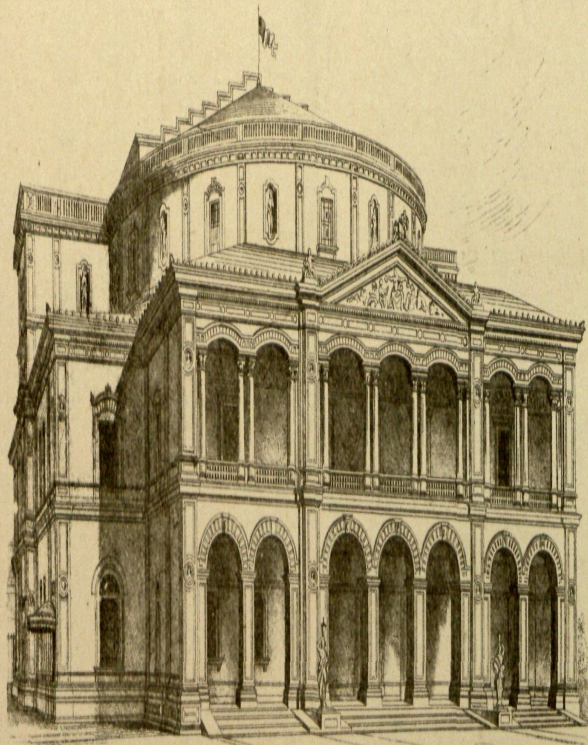
1

Teatro de la ciudad de Riga (Bohnstedt)



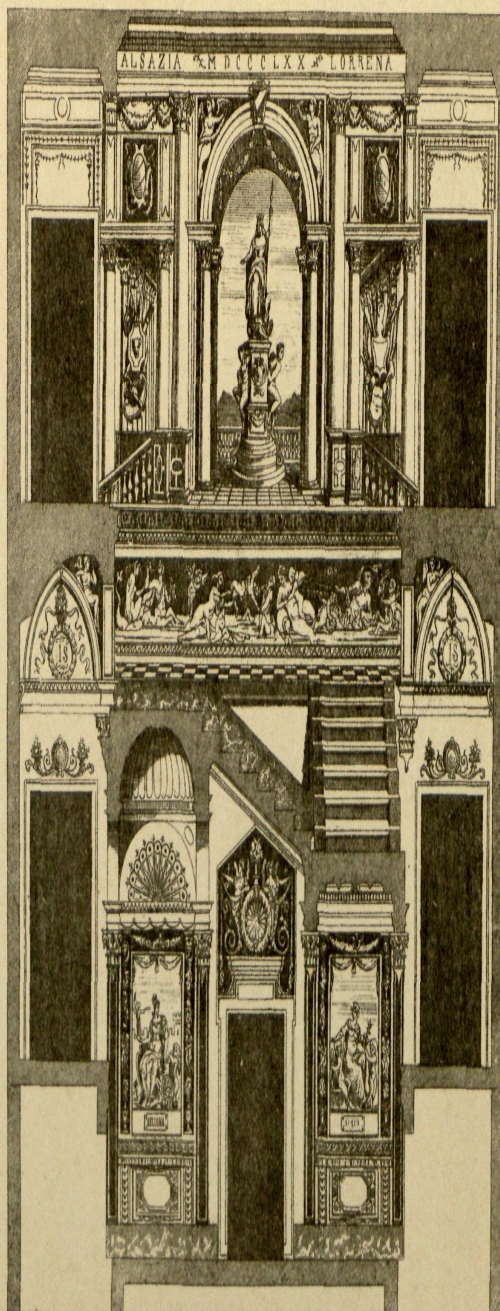
8

Teatro de Maguncia (Moller)



2

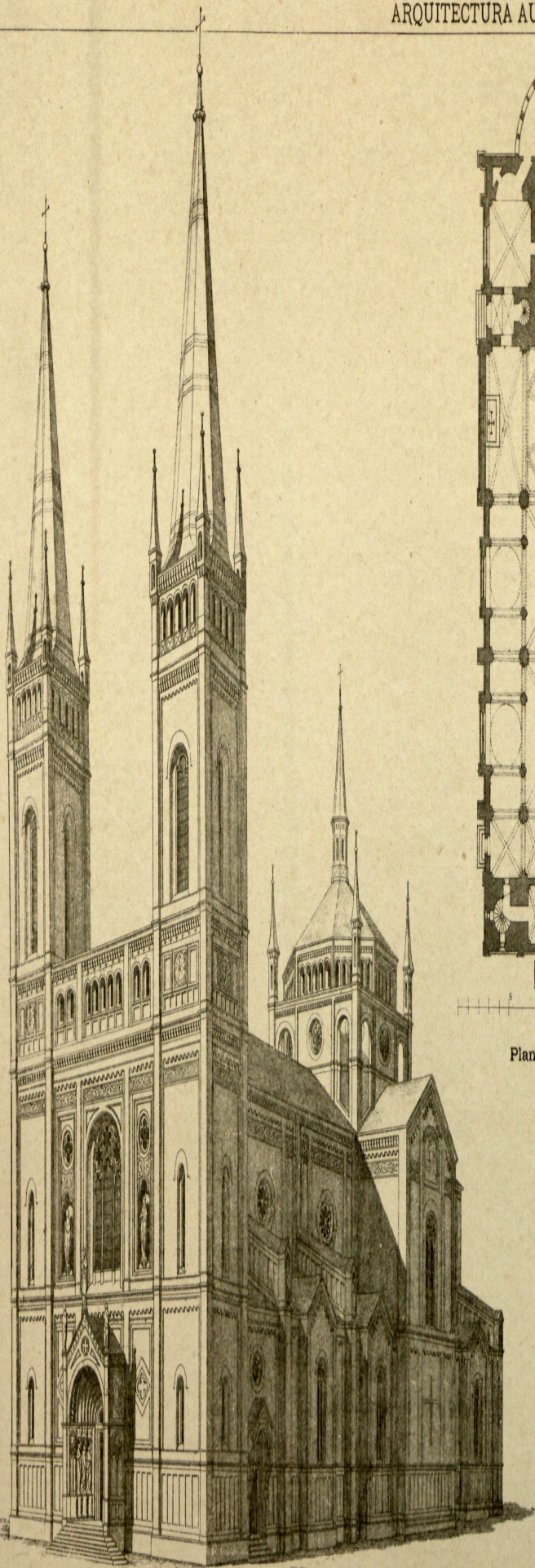
Teatro de Carlsruhe (Hubach)



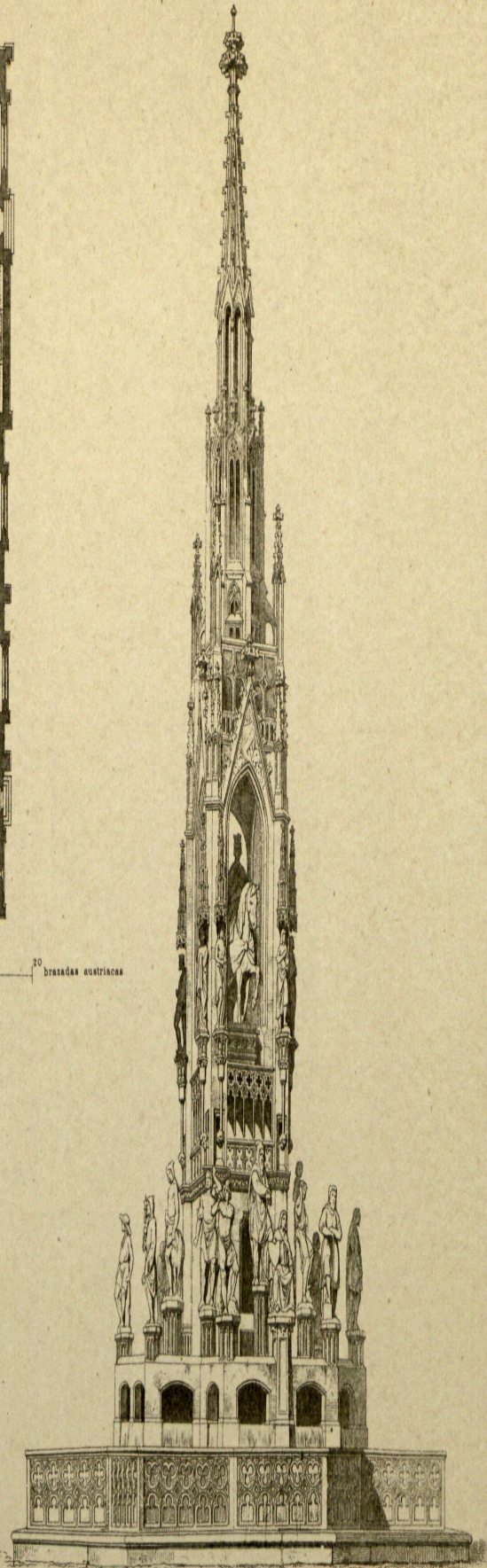
4

Villa Siegle en Stuttgart (Gnauth)

ARQUITECTURA AUSTRIACA MODERNA



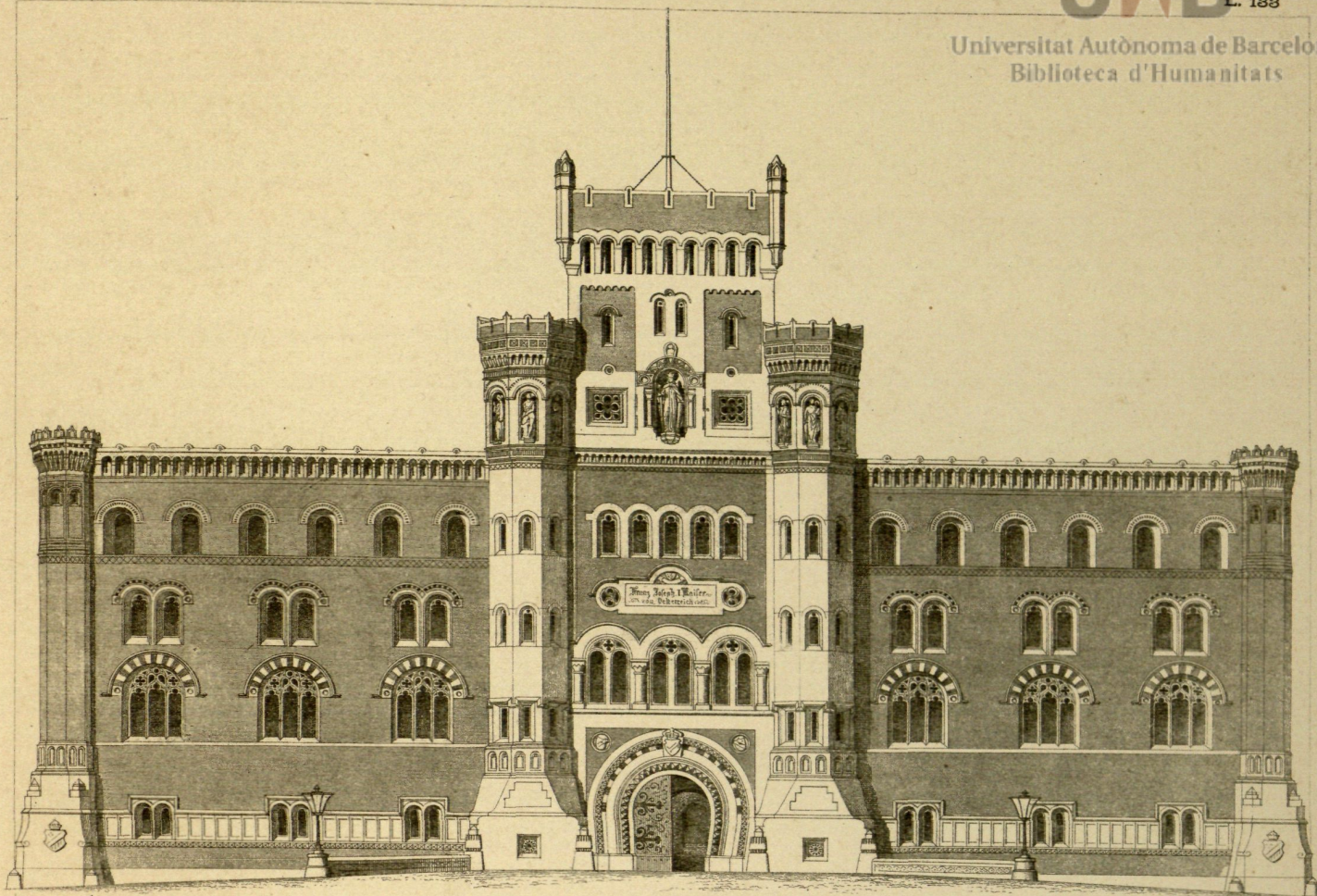
2
Planta de la fig. 1



8

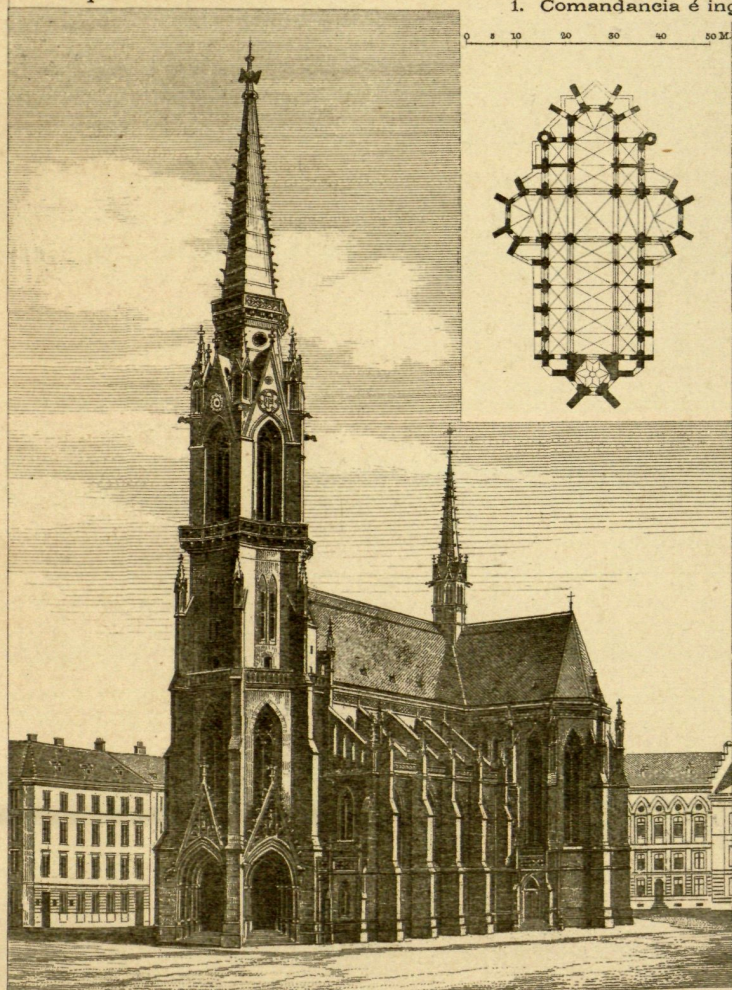
1
Iglesia de Allerchenfelder en Viena (J. G. Muller)

Monumento al emperador Francisco I en Praga (Kranner)



1

1. Comandancia é ingreso del Arsenal (Siccardsburg y de Nüll)



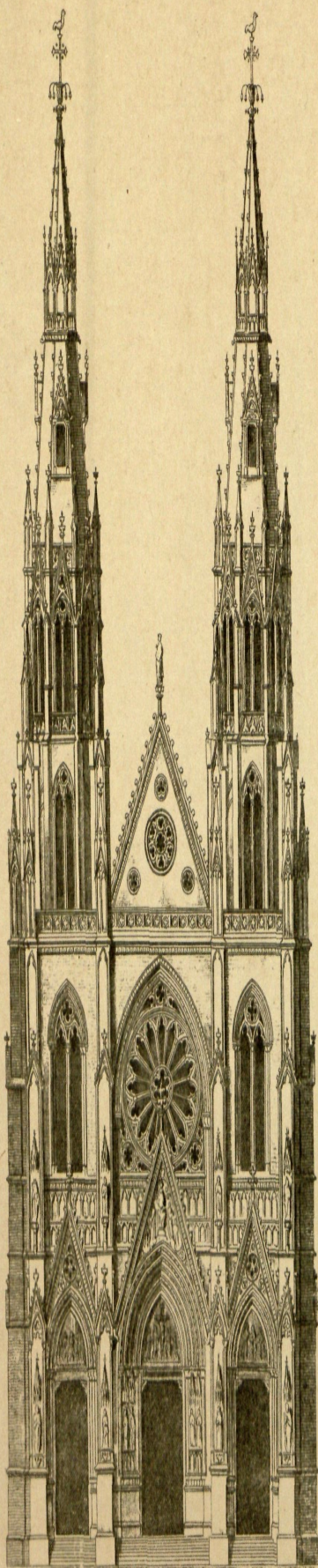
2

Iglesia de Weissgärber (Schmidt)

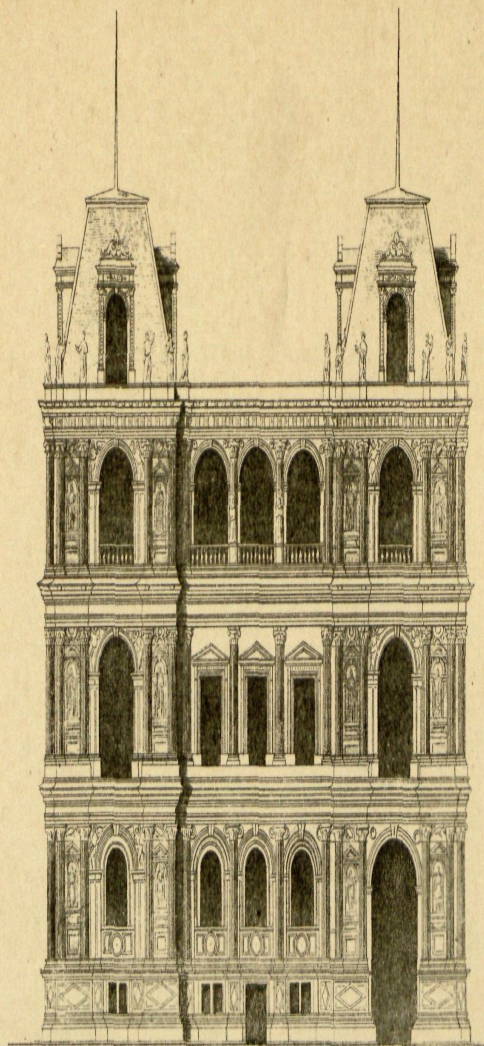


3

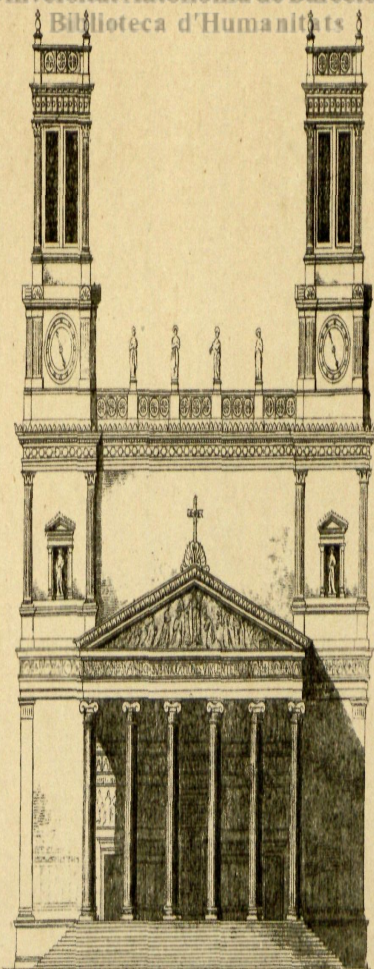
Iglesia de Fünfhaus (Schmidt)



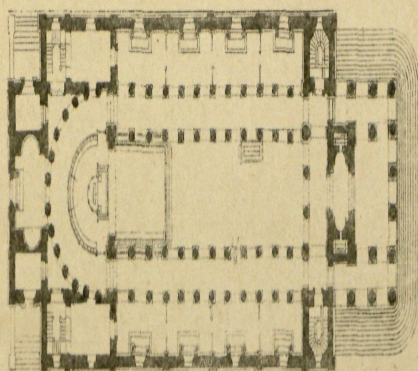
1
Iglesia de Santa Clotilde (Gau)



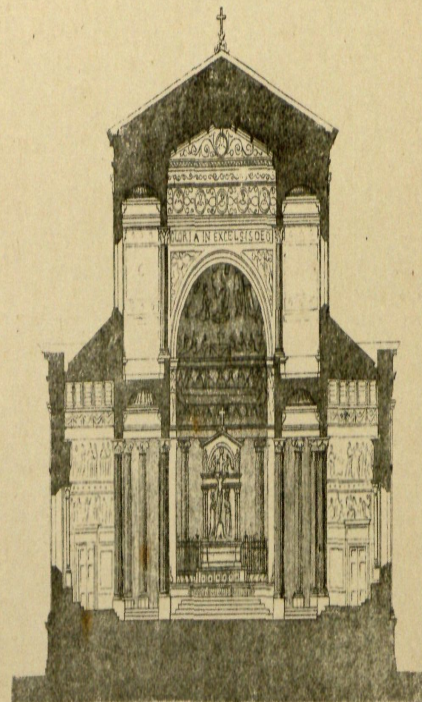
2
Cuerpo de la Casa de la Ciudad Godde y (Lesueur)



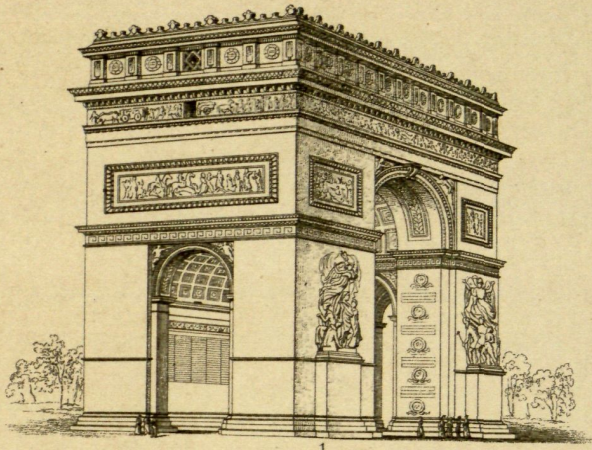
3
Iglesia de San Vicente de Paul (Hittorf y Lepère)



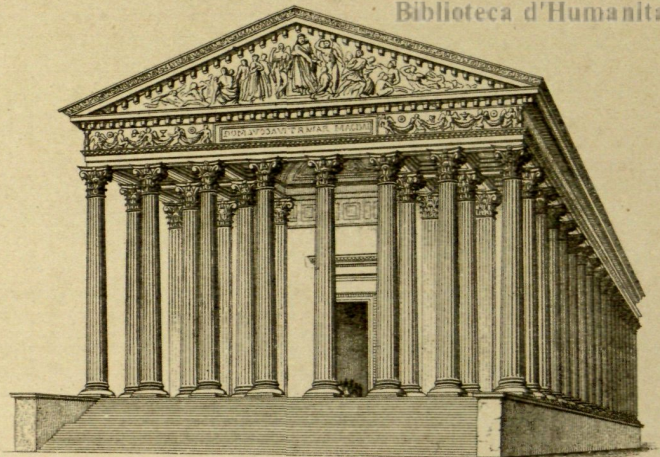
Planta de la fig. 3



Sección de la fig. 3



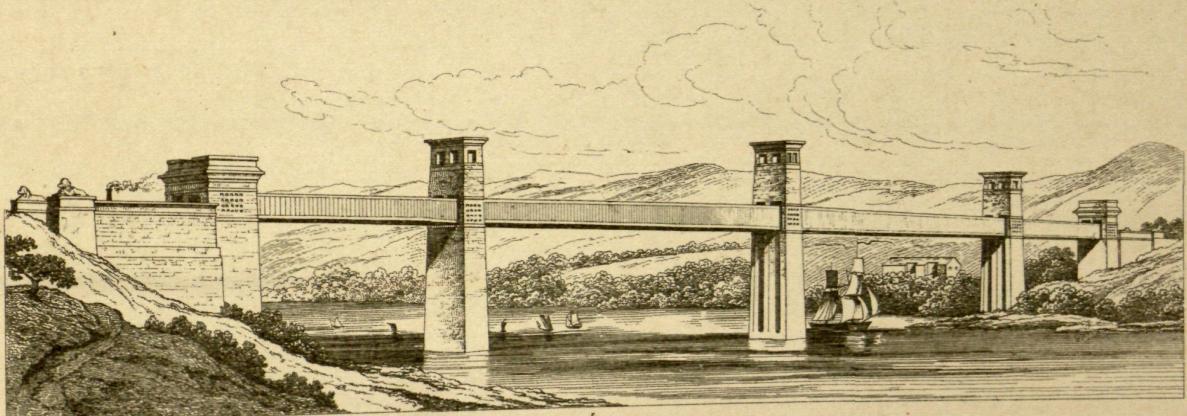
1
Arco de la Estrella en París. Arquitecto Chalgrín



2
Iglesia de la Magdaleua en París. Arquitecto Vignon



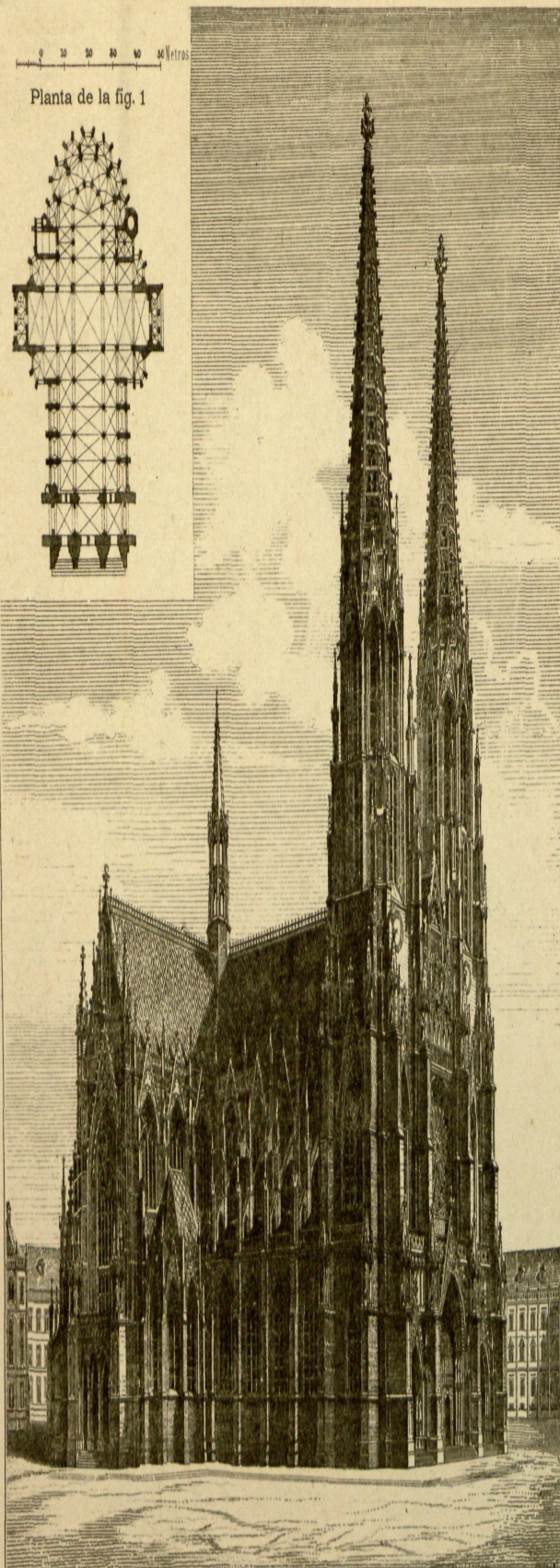
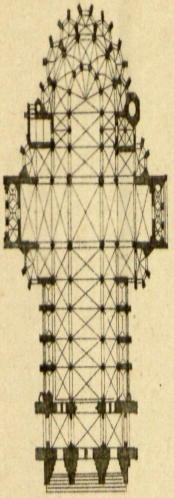
3
Galería de Víctor Manuel en Milán. Arquitecto Mengoni



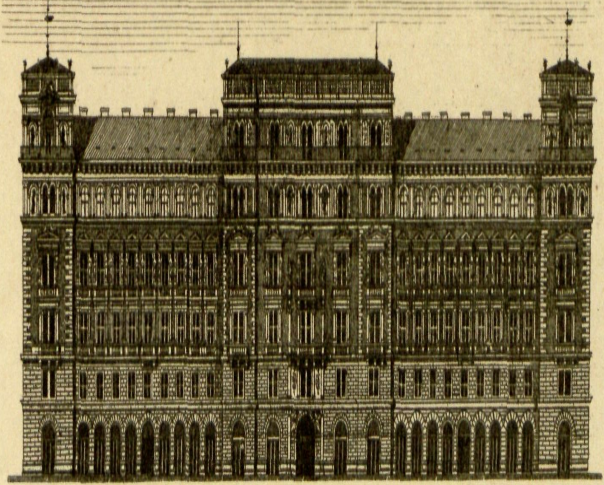
4
Puente tubular Britannia. Ingenieros Stephenson y Fairbairn

0 10 20 30 40 Metros

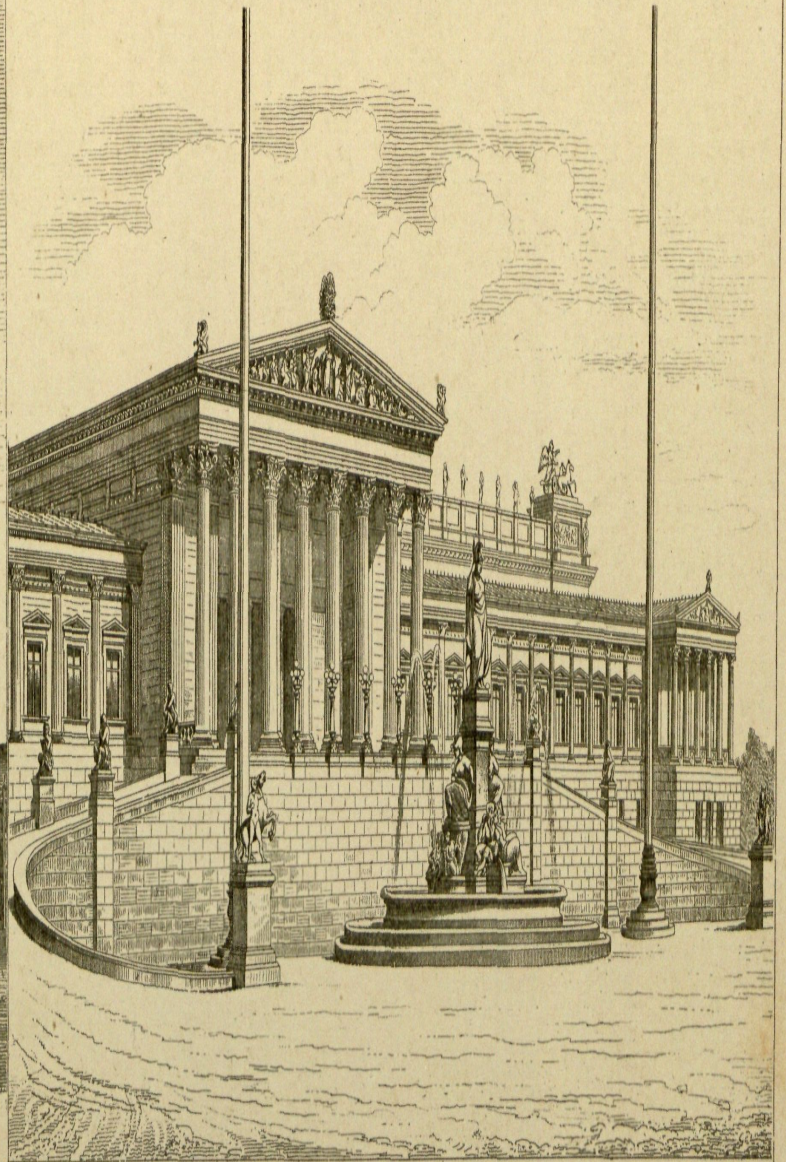
Planta de la fig. 1



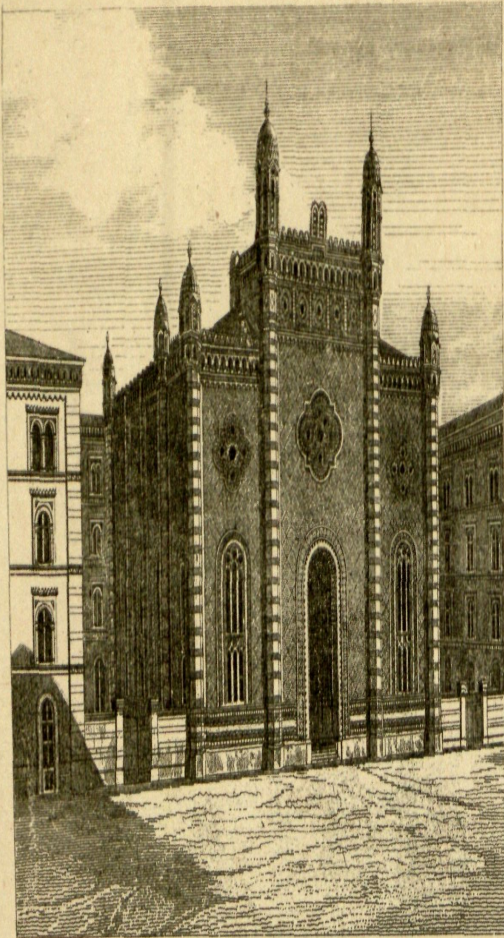
1
Iglesia votiva (Ferstel)



2
Palacio Heinrich (Hansen)



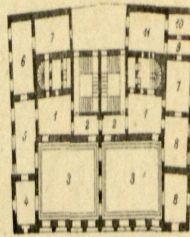
3
Palacio de las Cortes (Hansen)



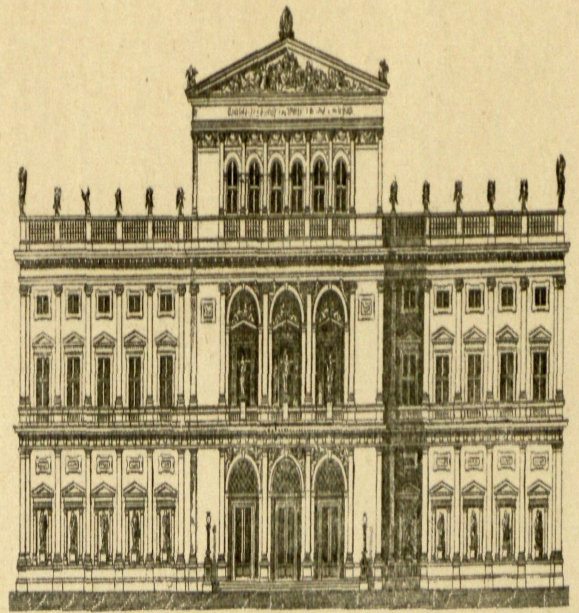
1

Sinagoga (L. Förster)

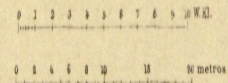
Planta de la fig. 3



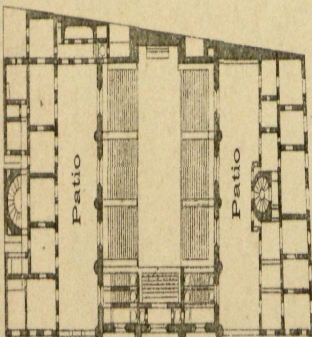
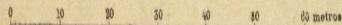
Piso



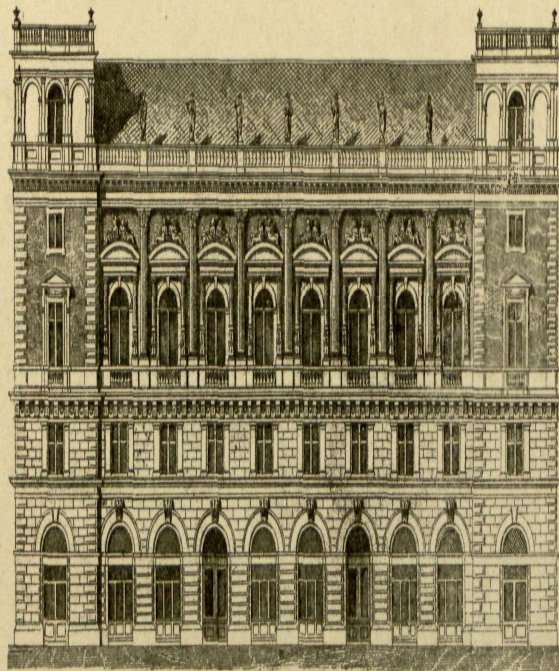
2



Edificio de la Asociación de Filarmónicos (Hansen)

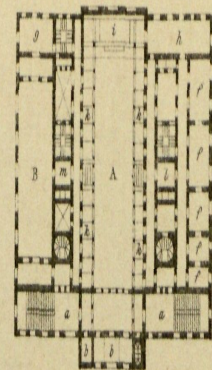


Planta de la fig. 1

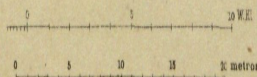


3

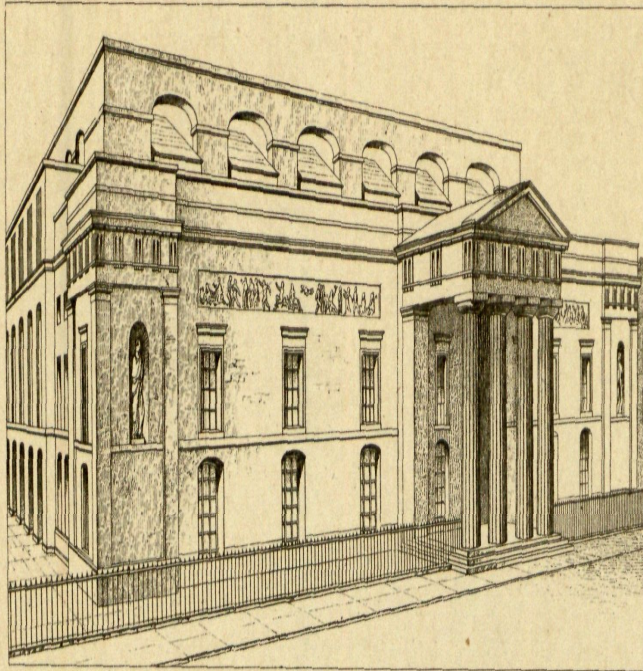
Planta de la fig. 2



Piso

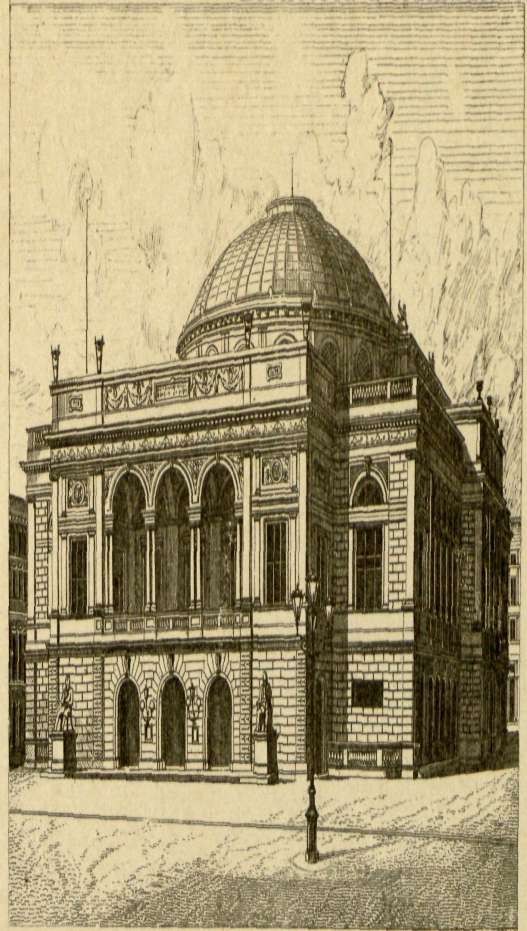


Sociedad de Arquitectos é Ingenieros (Thienemann)



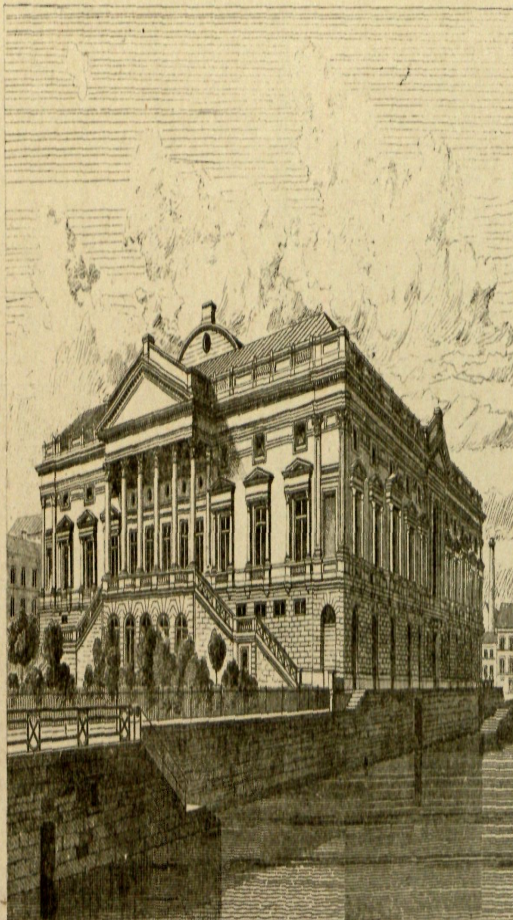
1

Teatro Covent-Garden de Londres (Rob. Smirke)



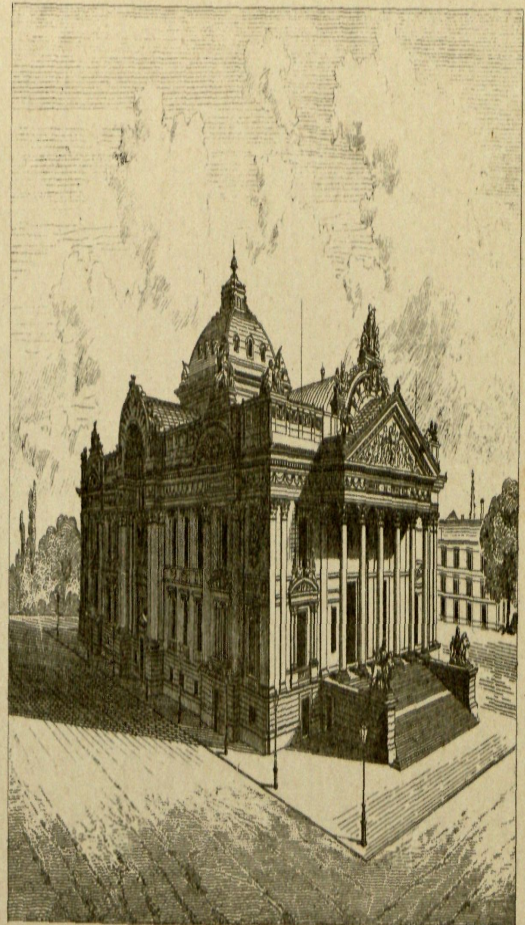
2

Teatro de Copenhague (Dahlerup y Petersen)



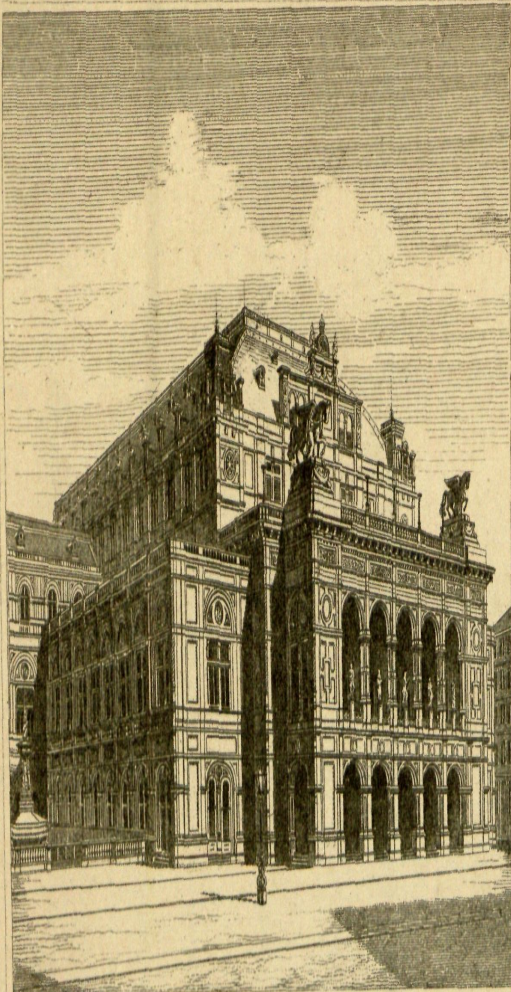
3

Palacio de Justicia en Gante (Roelandt)

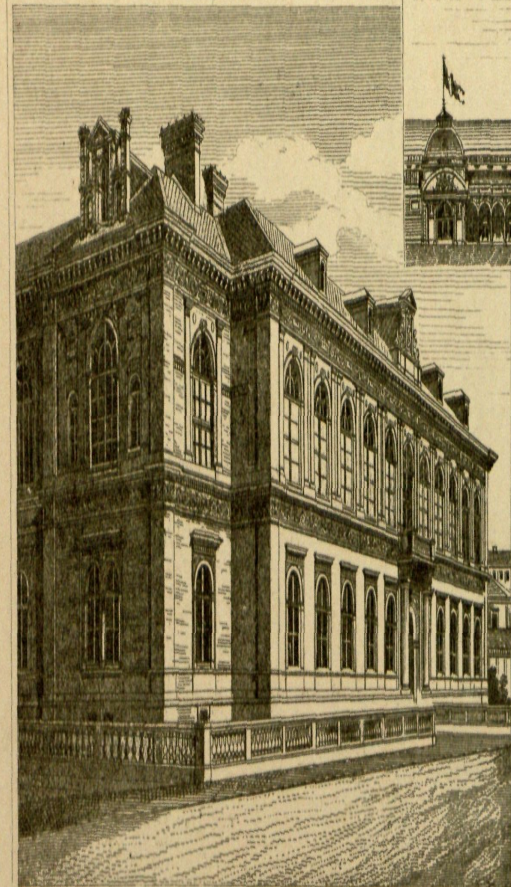


4

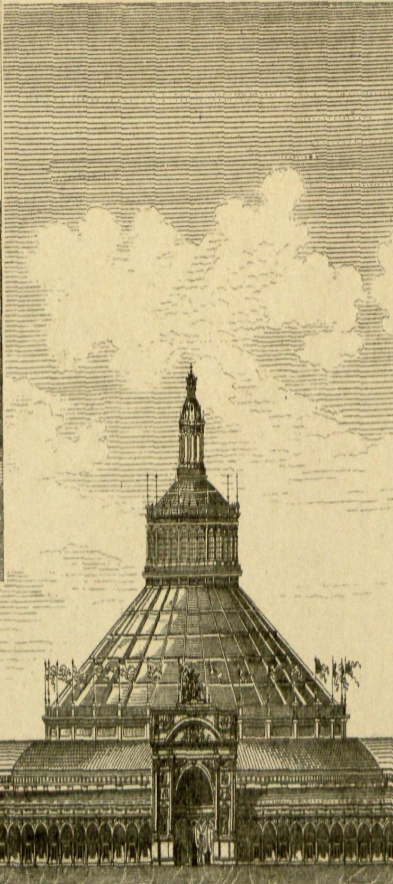
Bolsa de Bruselas (Suys)



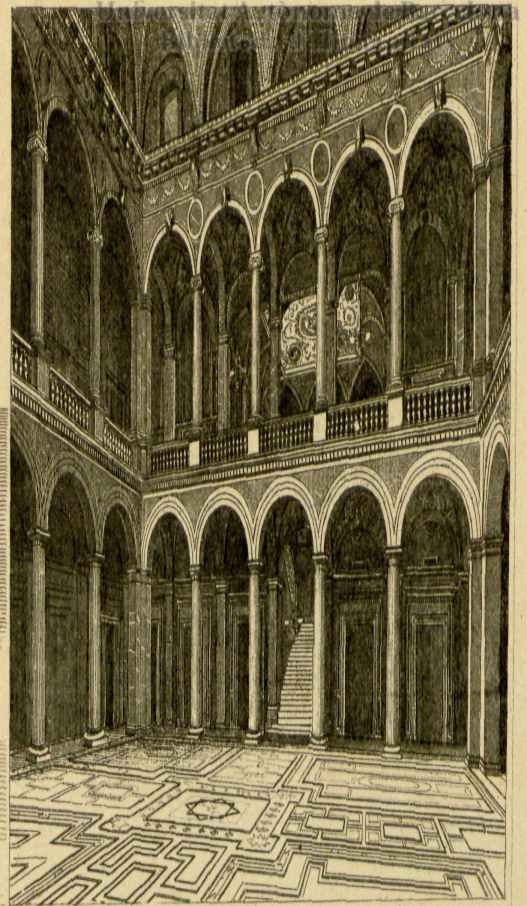
1 Teatro de la Opera (De Nüll)



2 Laboratorio químico (Ferstel)



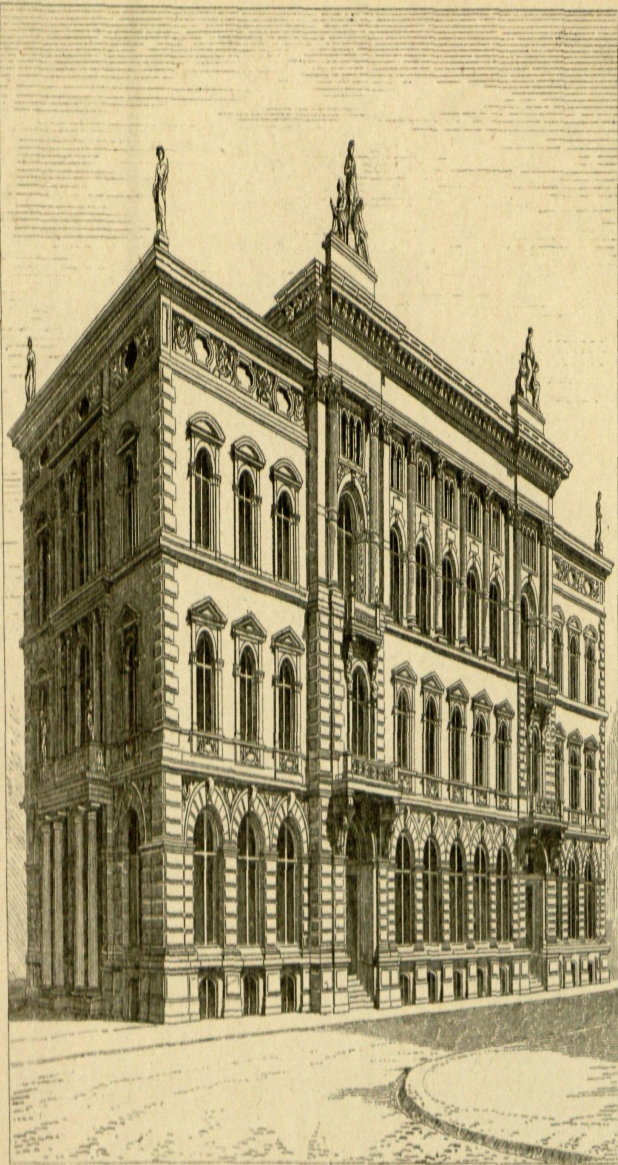
3
0 5 10 20 30 40 50 60 70 80 90 100 metros
Cuerpo central de la Exposición (Masenauer)



4 Patio del Museo austriaco (Ferstel)



5 Palacio Schey (Schwendenwein)



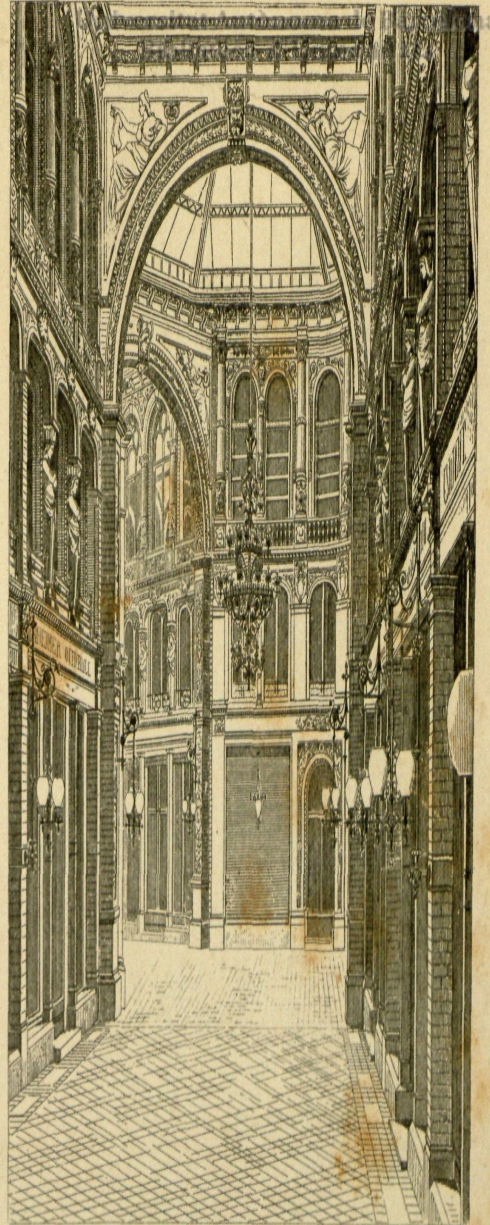
1 Banco hipotecario (Ende y Böckmann)



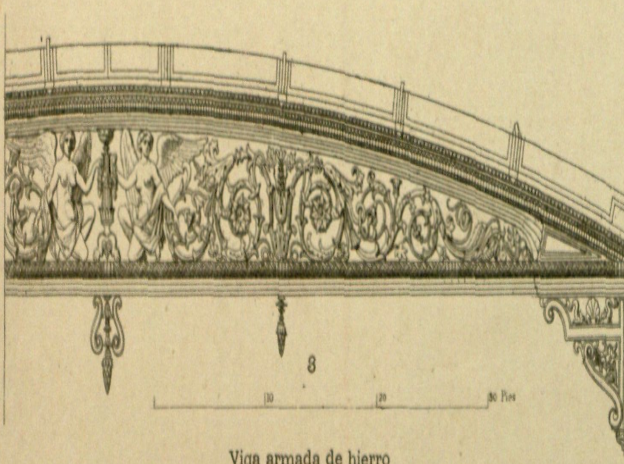
4



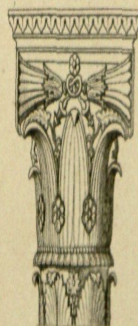
3



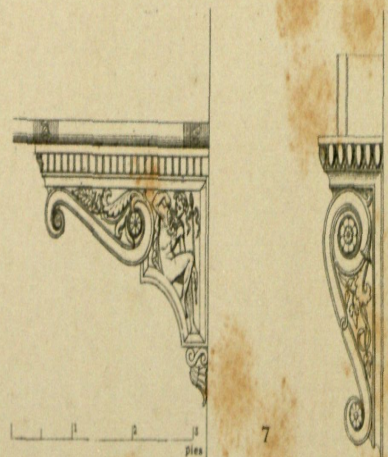
2 Pasaje del Emperador (Kyllmann y Heiden)



Viga armada de hierro

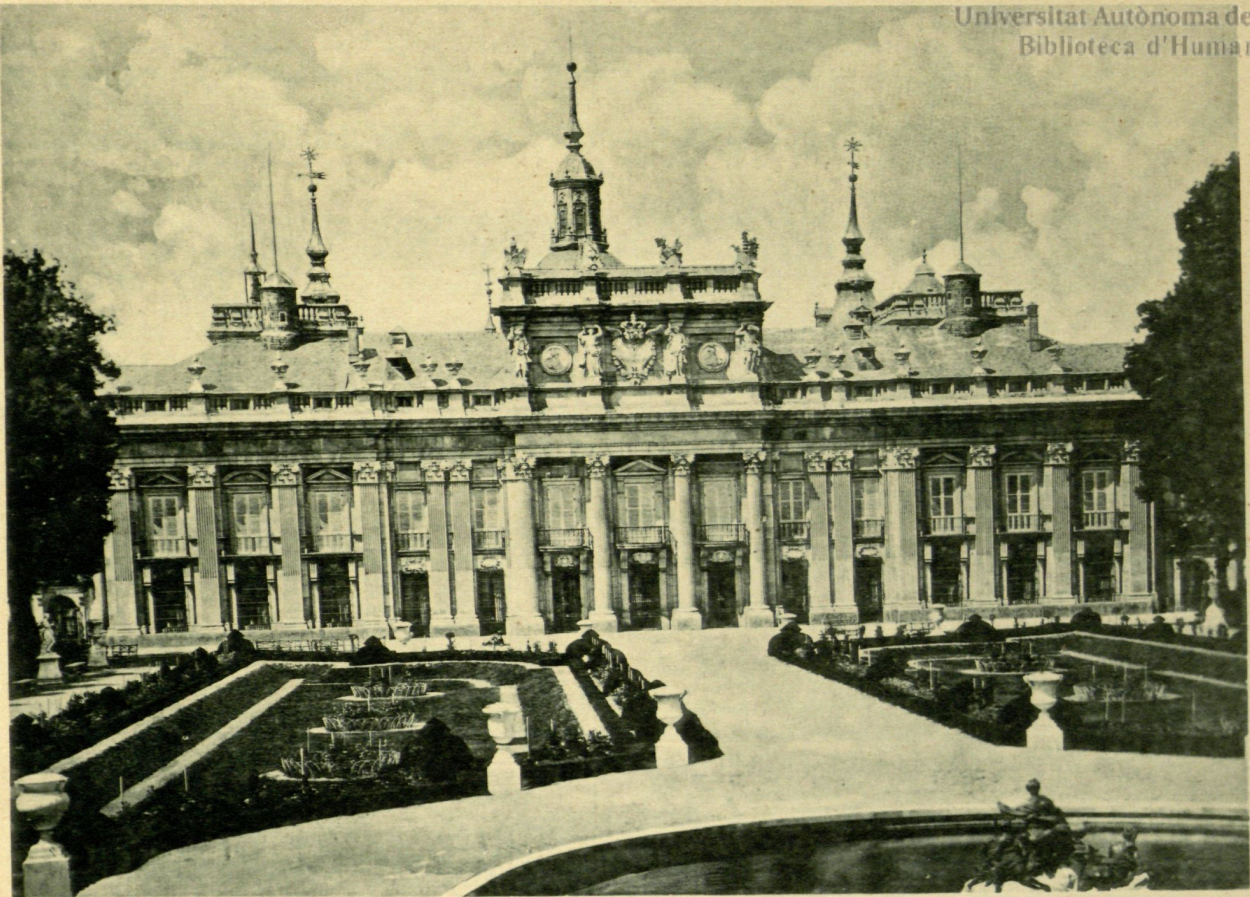


6

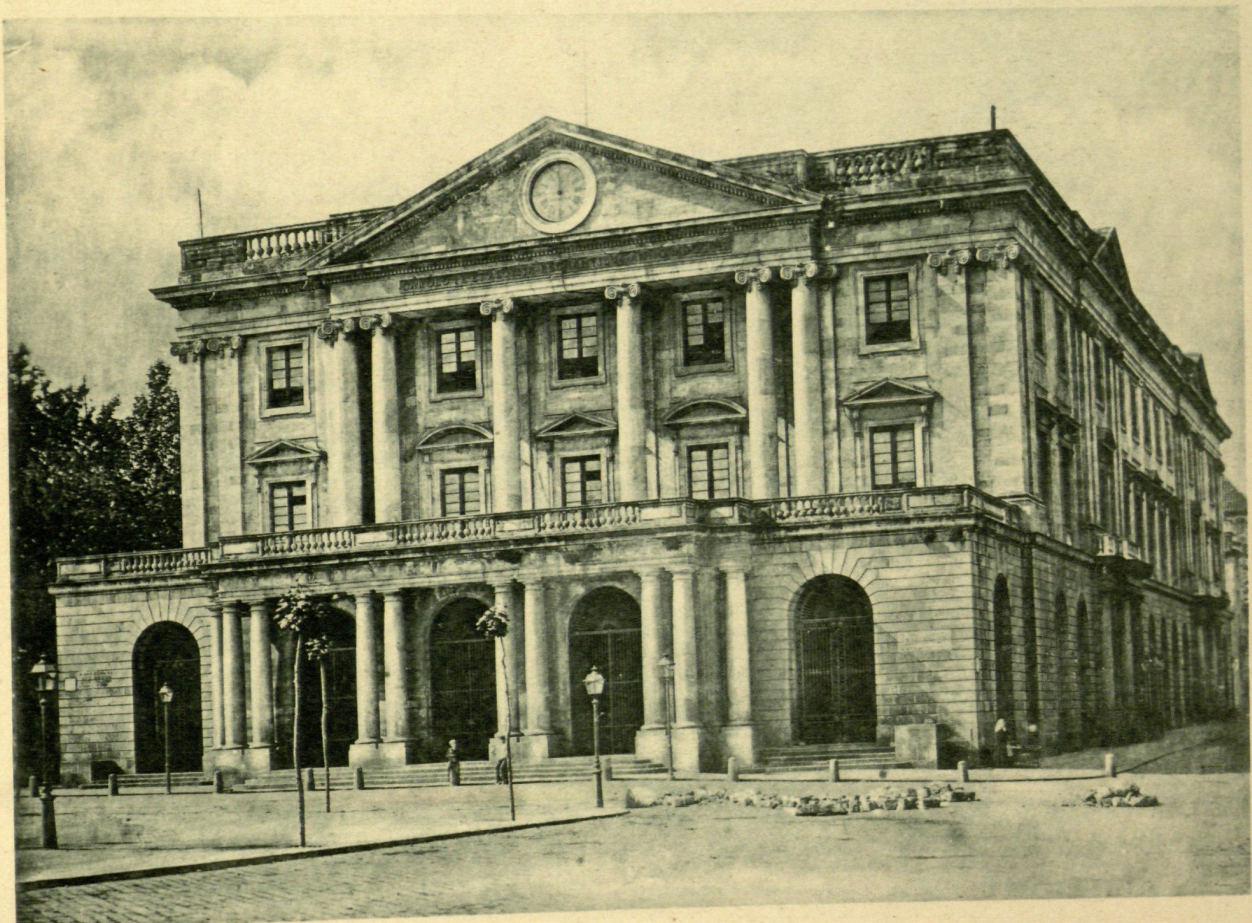


7

4 á 7 Detalles del Nuevo Museo (Stüler)



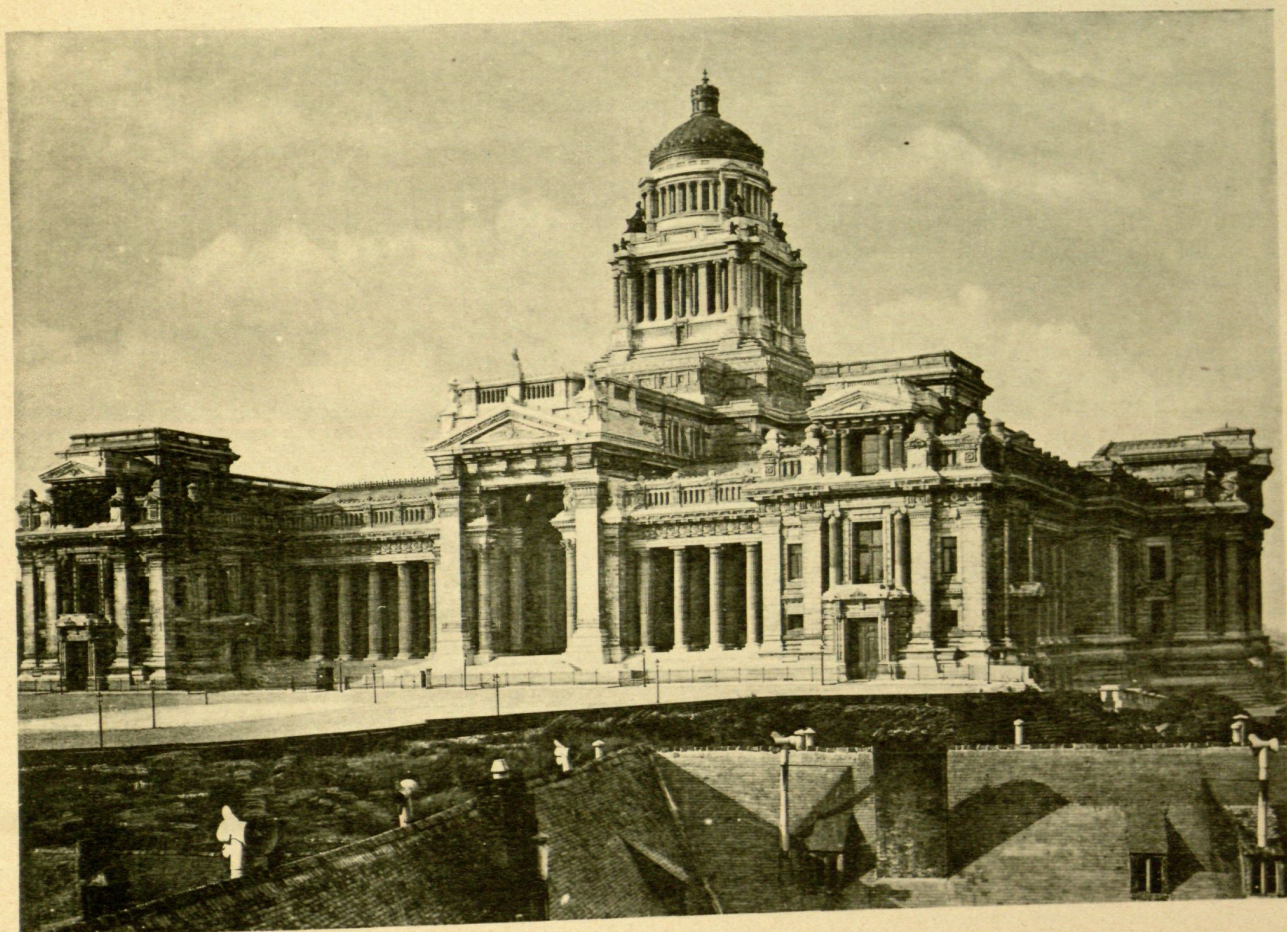
Palacio en el Real Sitio de San Ildefonso



Casa Lonja de Barcelona



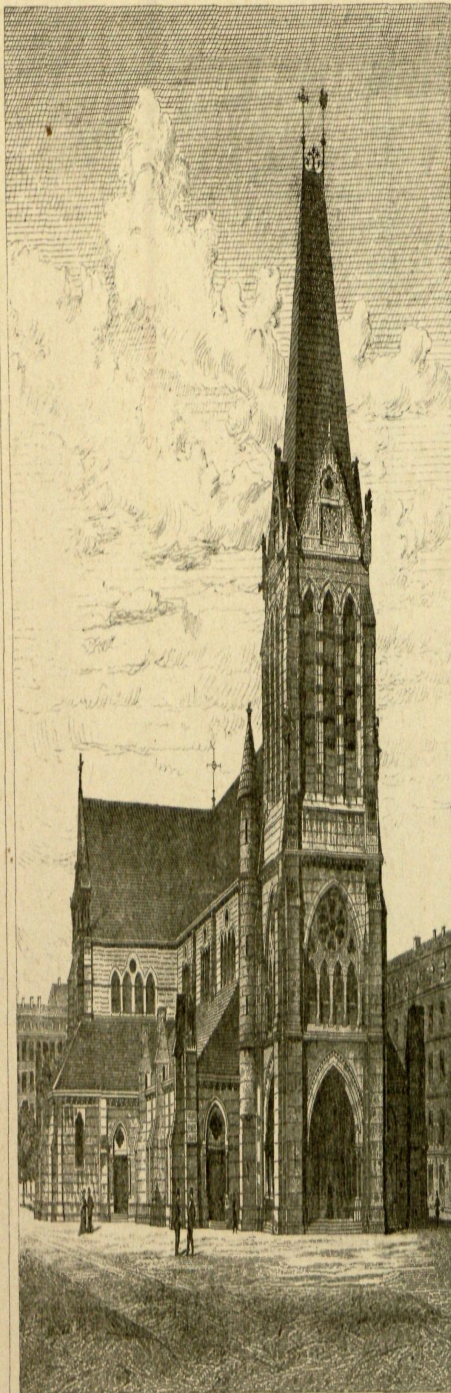
Palacio de la Bolsa de Viena



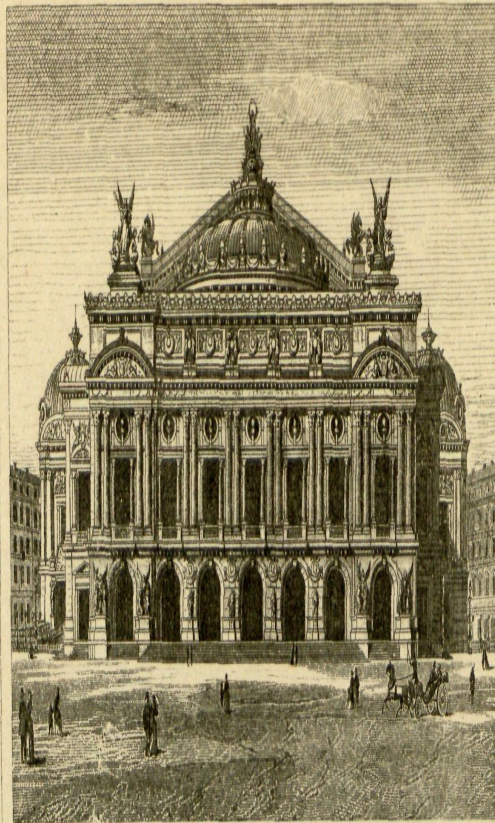
Palacio de Justicia de Bruselas



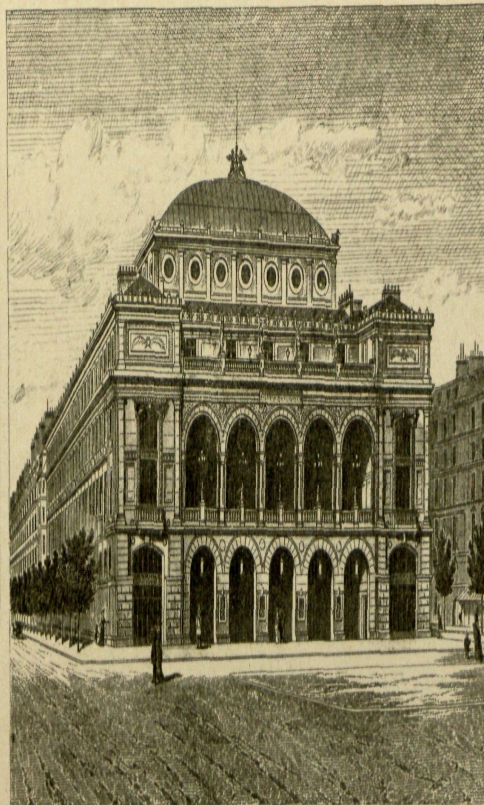
GALERÍA DE MÁQUINAS DE LA EXPOSICIÓN DE PARÍS DE 1889



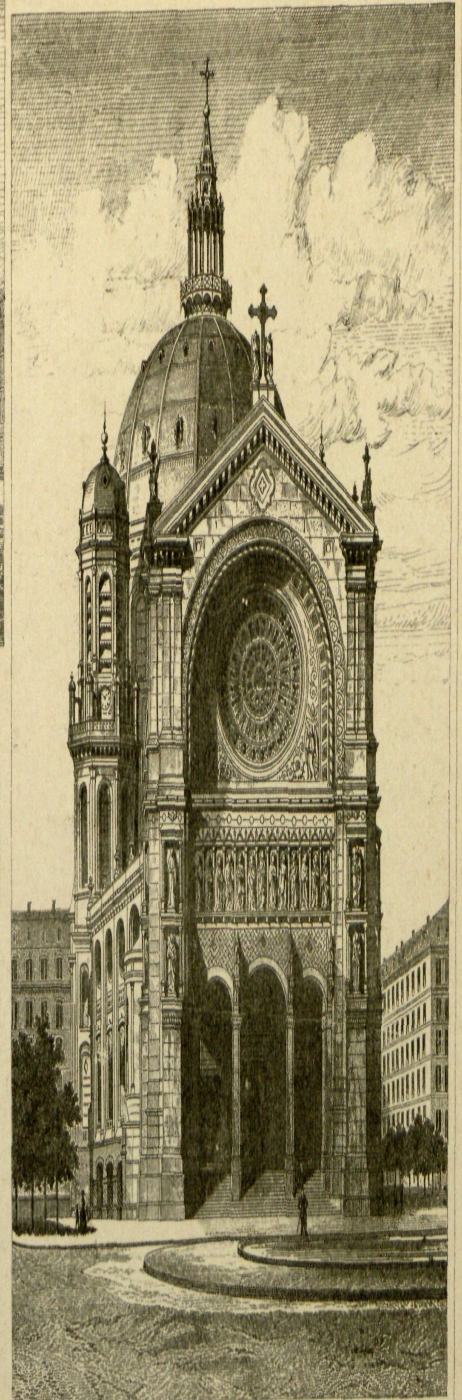
1
Iglesia parroquial de San Dionisio (Viollet-le-Duc)



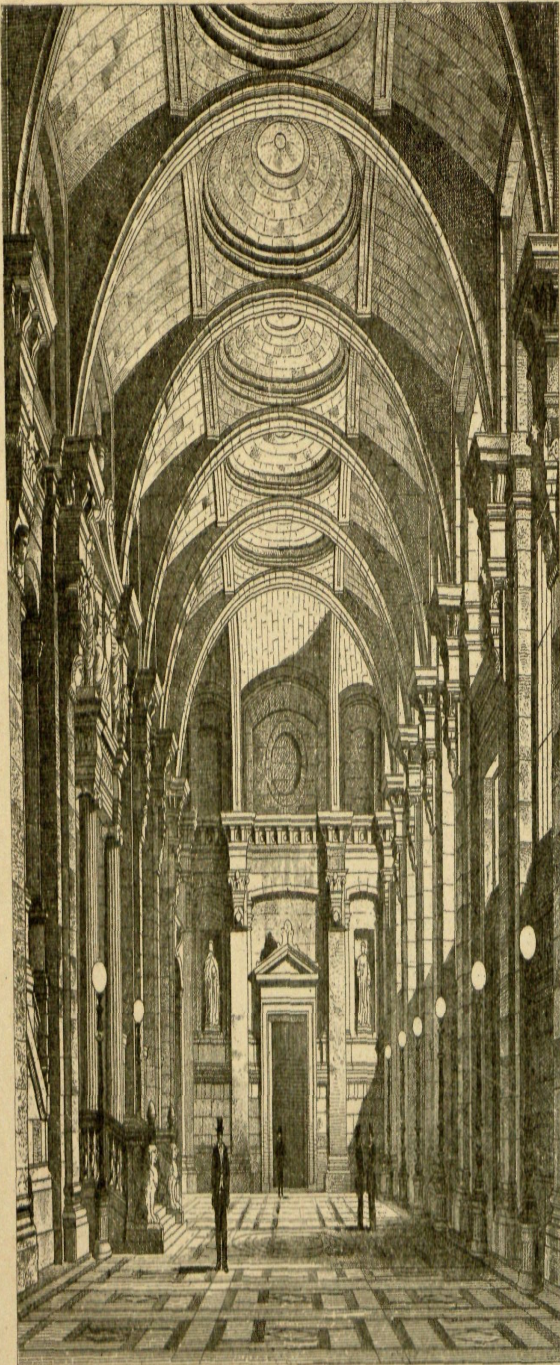
8
Teatro de la Opera (Garnier)



4
Teatro del Châtelet (Davidoud)

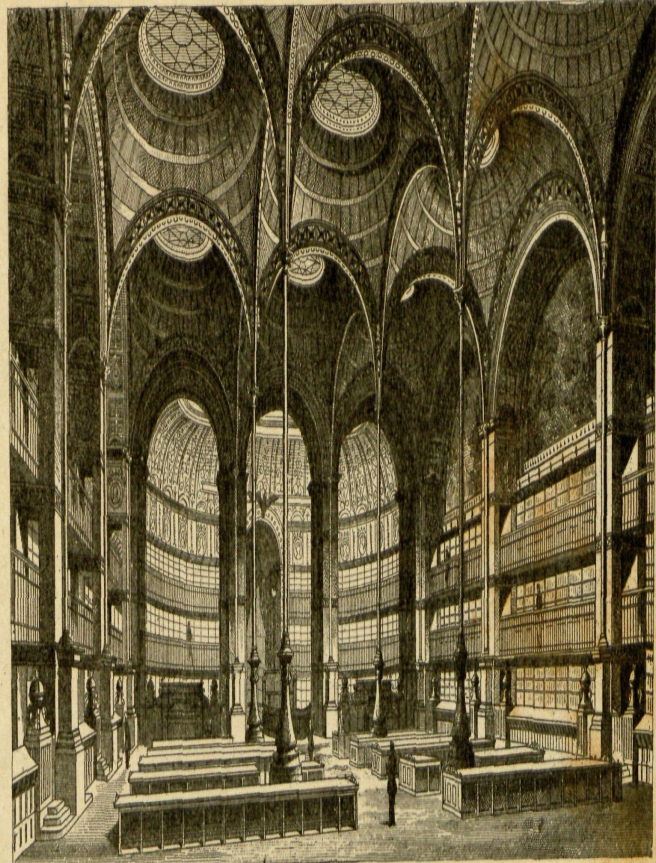


2
Iglesia de San Agustín (Baltard)



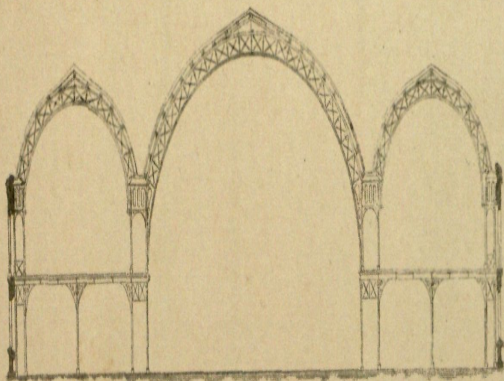
1

Palacio de Justicia (Duc)

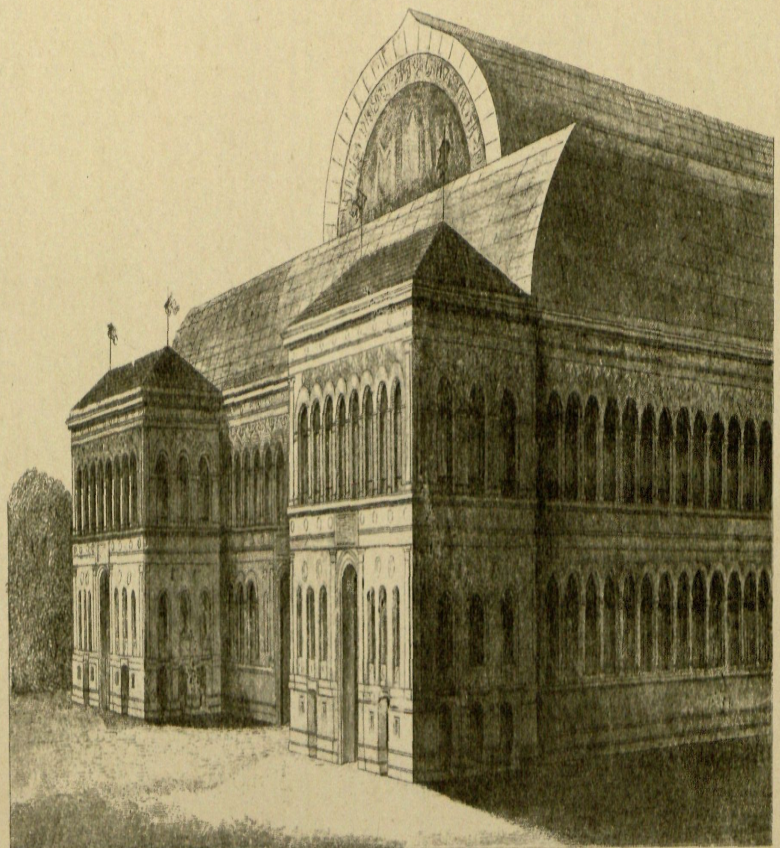


2

Sala de lectura de la Biblioteca Nacional (Labrouste)

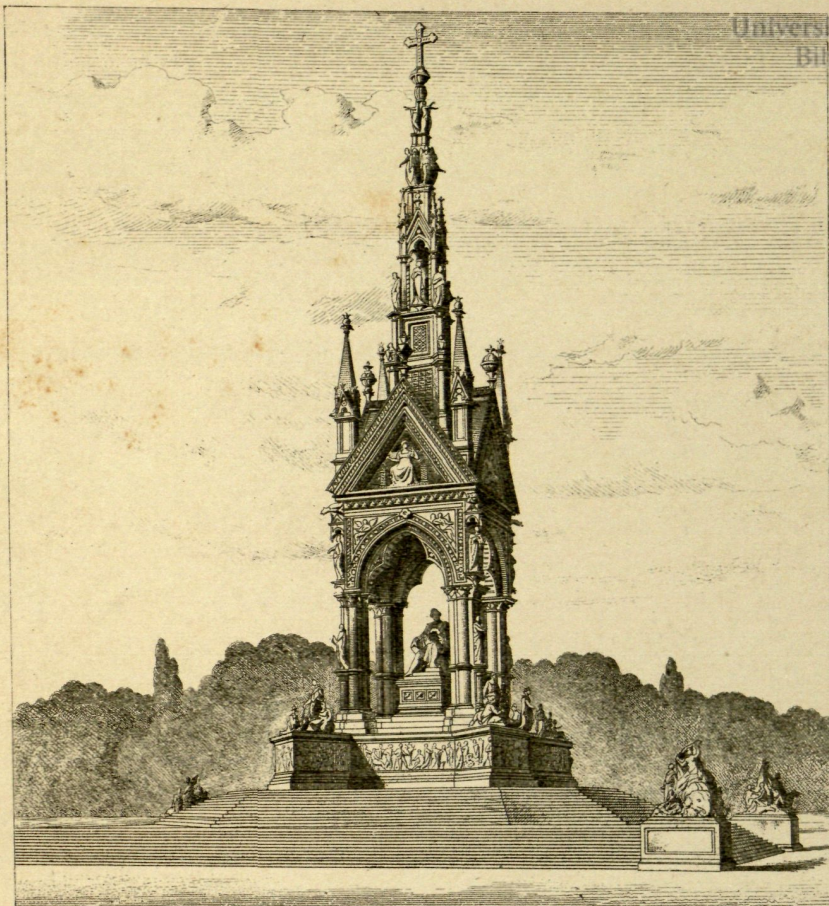


Sección de la fig. 8

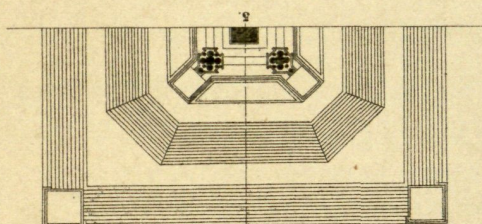


3

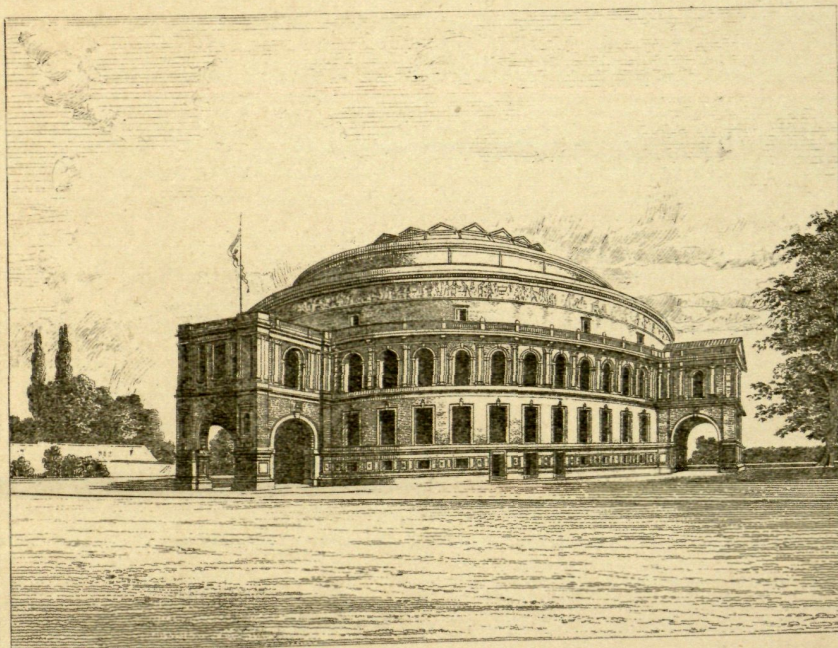
Palacio de la Industria (Viol)



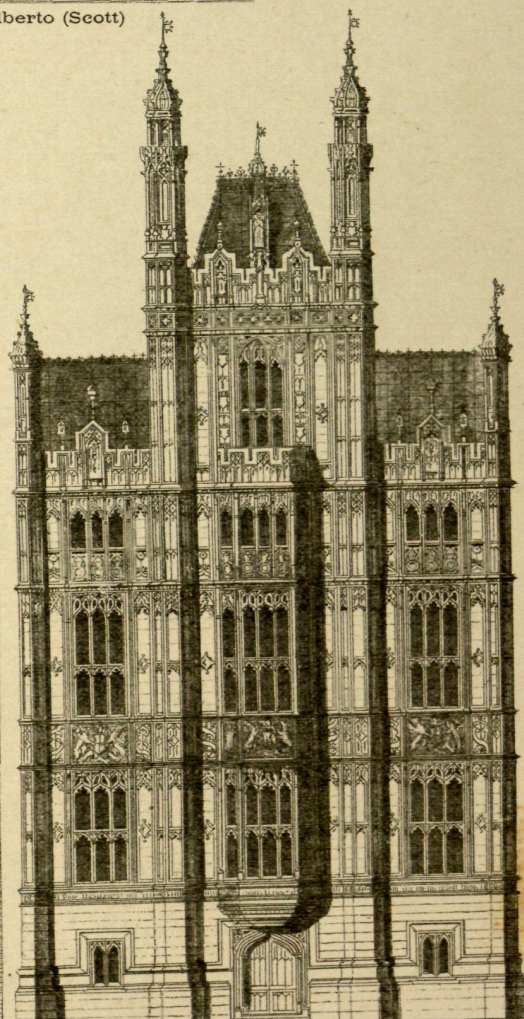
1 Monumento en memoria del príncipe Alberto (Scott)



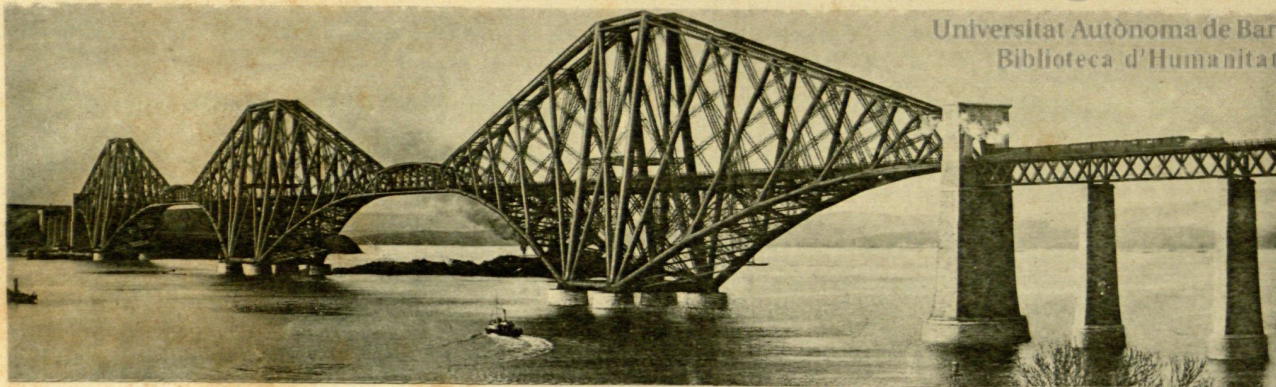
Planta de la fig. 1



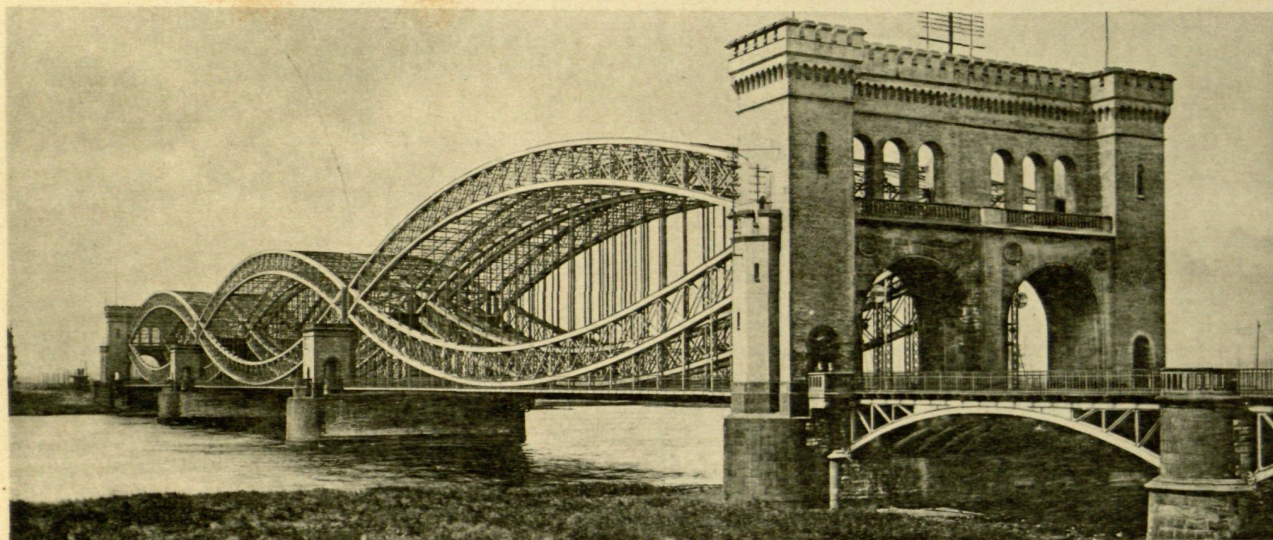
2 Albert-Hall (Scott)



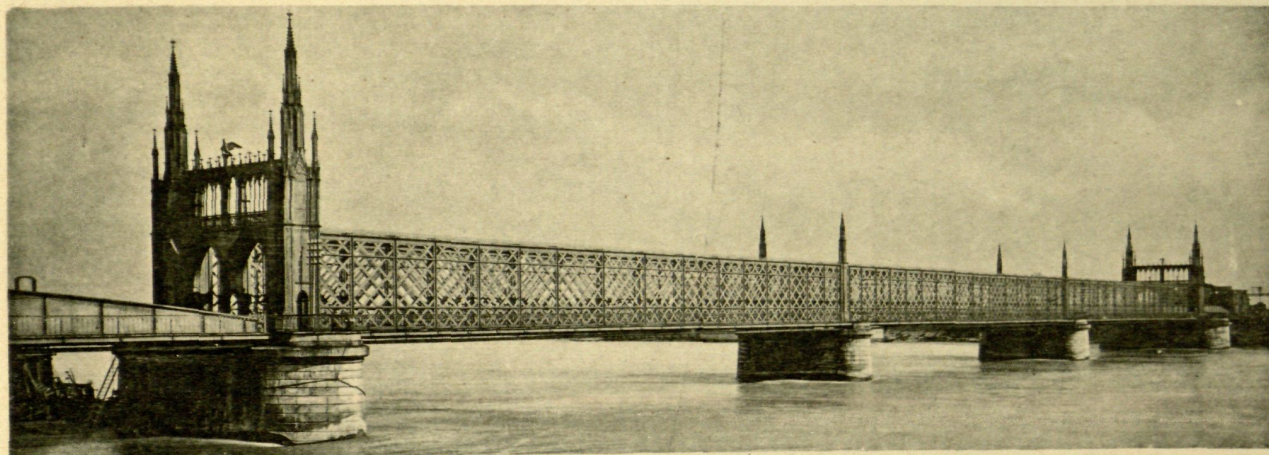
3 Parte del Parlamento (Barry)



Puente de Forth en Escocia



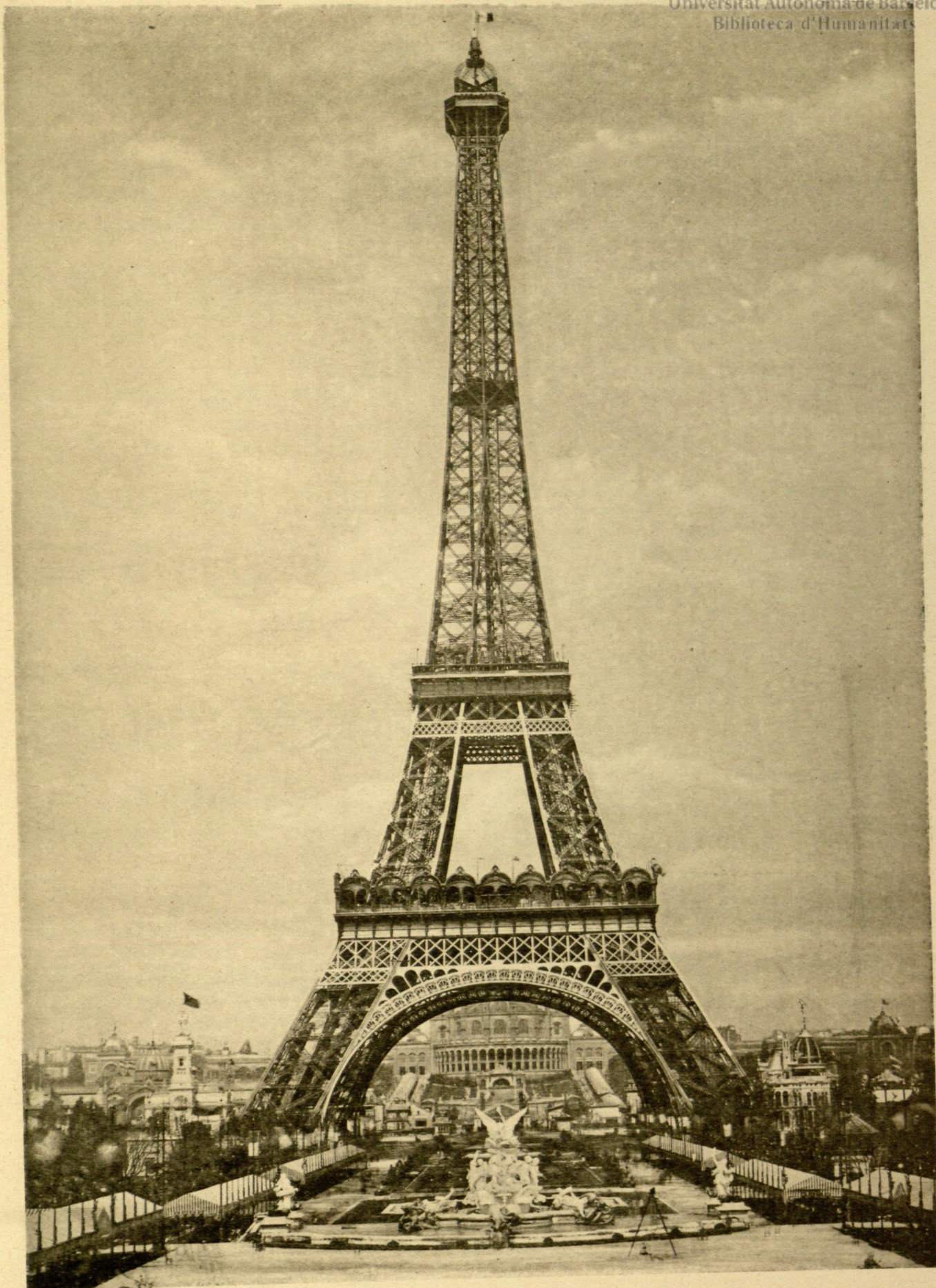
Puente del ferrocarril de Elbarvecke en Hamburgo



Puente de Kehl en Estrasburgo



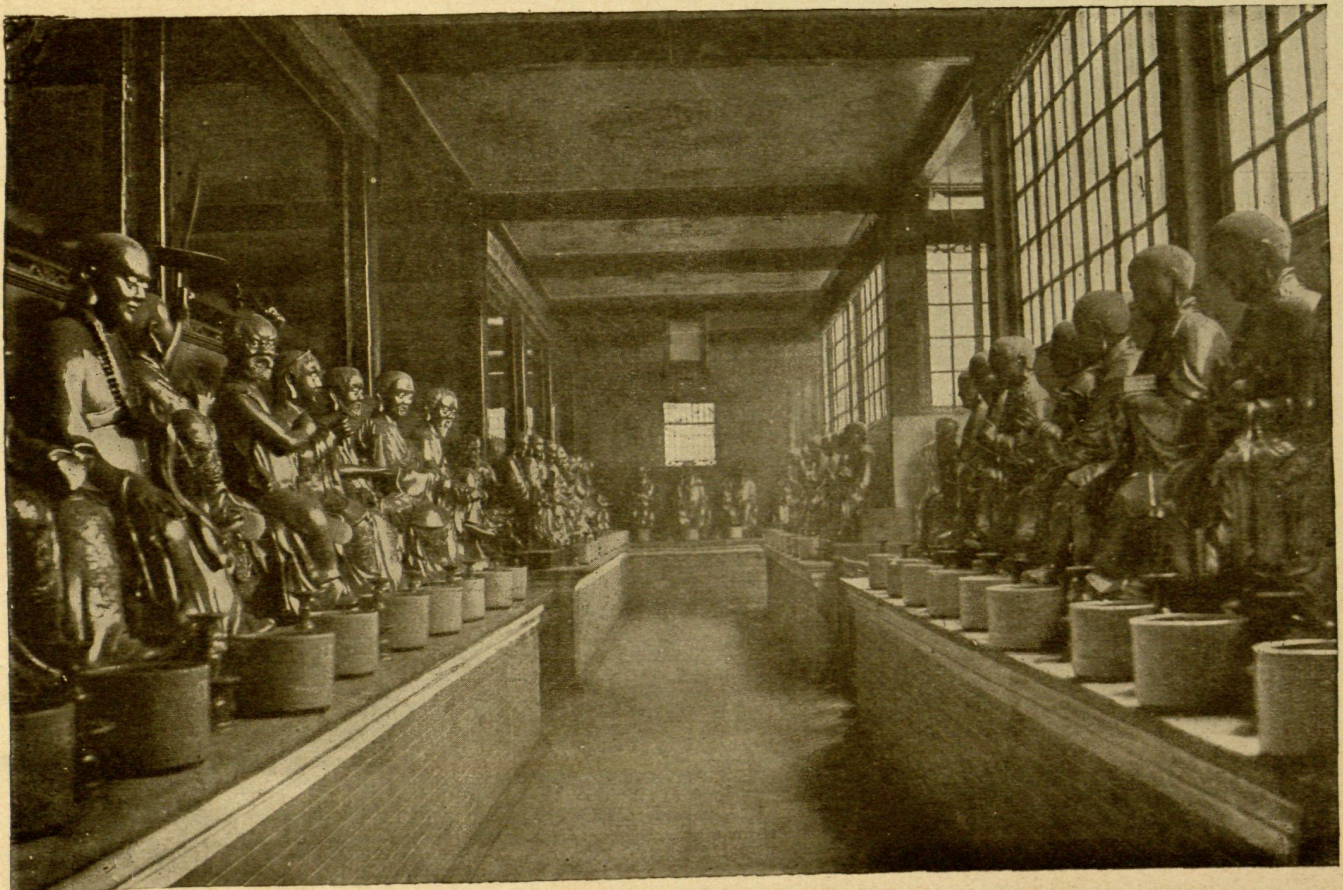
Puente de Hammersmith



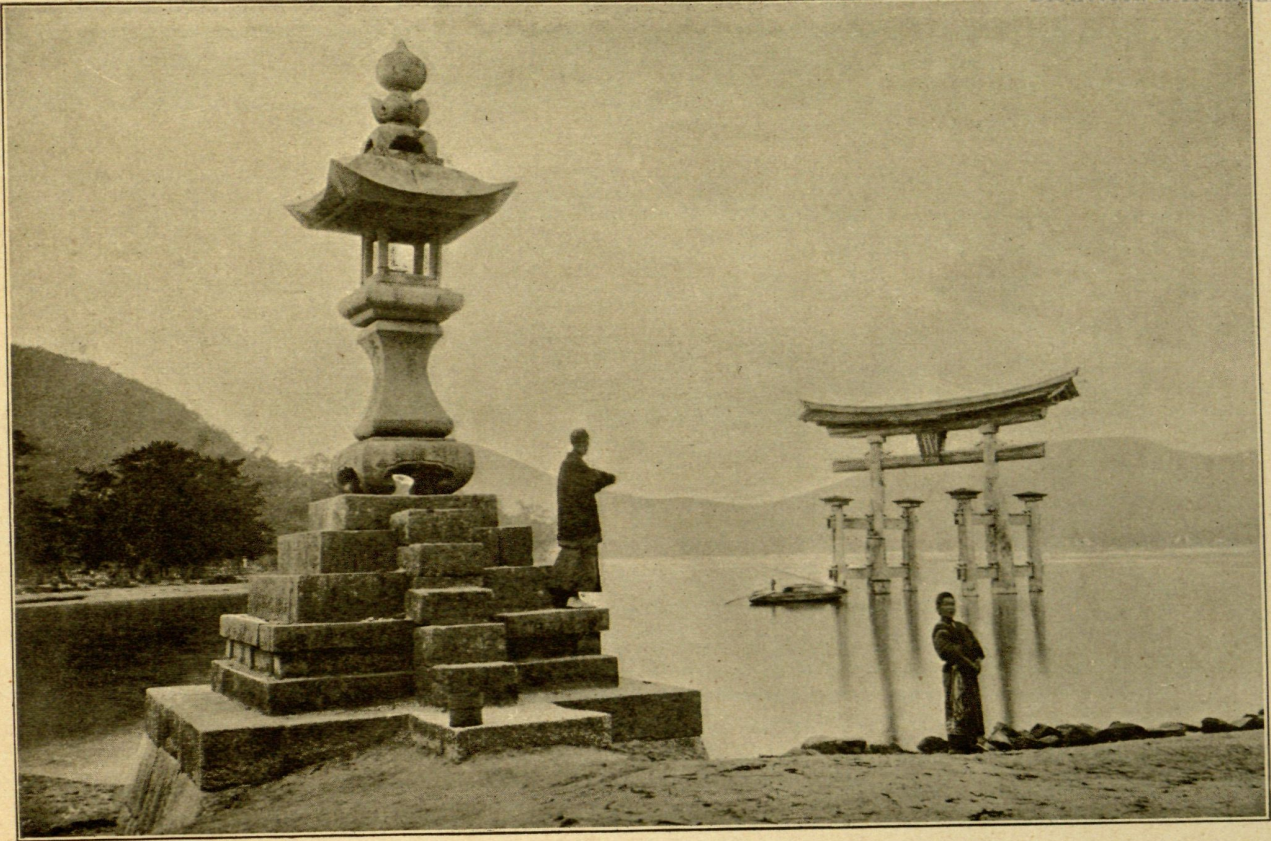
TORRE EIFFEL (PARÍS)



Barrio chino de Pekín



Templo de los quinientos genios en Cantón



Altar en Miyajima



Puerta del templo de Asakusa en Tokio

EXCLÒS DEL PRÉSTEC



Universitat Autònoma de Barcelona

Servei de Biblioteques

Biblioteca d'Humanitats

RES / 1337





