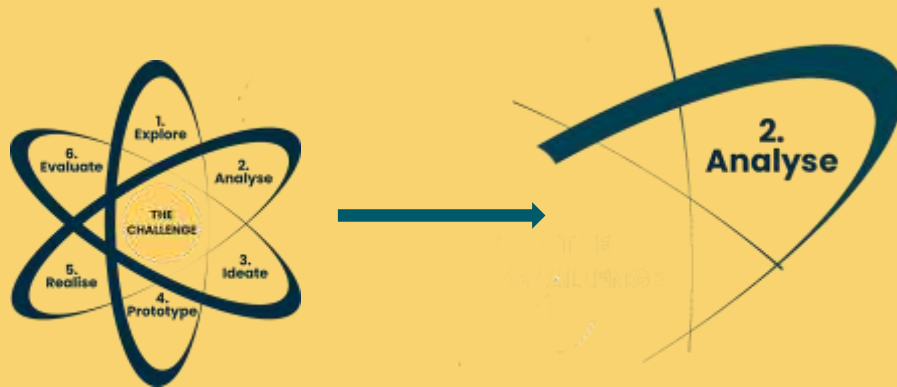


# **Module 2 : Analyze**

# 2. Analyze



On the basis of the collected data, an **analysis** is conducted.

Theoretical perspectives can be added in order to develop a deeper understanding of the challenge, its origin and its components.

The aim of the **analyze** is to see patterns and to achieve an in depth understanding of the challenge. It is imperative to undertake a careful analysis in order to avoid quick fixes and obvious answers to the challenge.

# Activities for Analyze



## ACTIVITIES

Title	Time	Group size
The 5 W's and 1H: Who? – What? – When? – Why? – Where? –How?	10-20 min	10-40 students 5-15 groups
The 5 Whys	10-30 min.	20-40 students 4-10 groups

# The 5 W's



## 2.2 The 5 W's – Who? – What? – When? – Why? – Where?

(D-EMIND Methodology, p. 53)



Analyse

*Adapted: Ilse Fraussen*

*Facilitated by the Teacher*



The aim is to analyse important information to develop a clear overview of the challenge.



10-20 min.



10-40 students  
5-15 groups



A virtual whiteboard



1. The students are divided into groups of 5-15 by using <https://www.randomlists.com/team-generator>
2. The teacher creates 6 boxes on the virtual whiteboard. Each box should contain one of the 6 following questions (the list of questions within each level is not exhaustive):

# The 5 W's & 1H



- WHO is involved in the project, who is it meant for and who decides?
- WHAT do you want to achieve, what do the customers want, what is the context and what is the purpose?
- WHEN does it start, when does it have to be delivered and when does the problem occur?
- WHY is a solution important, and why are you involved in the project?
- WHERE will this be used, and where will it take place?
- HOW does it work, how will it look and how much will it cost?

The groups review the questions and put their answers on each of the papers

- You analyse the answers you made and discuss if they add clarity to the challenge.

Who is involved? Who can help?



What is the purpose?



What are the problems? ?



Why is this a problem?



Where can it be used?



When do we need a solution ?



What could it look like?



How can it work?



Who wants it, who needs it?



Who can help us?



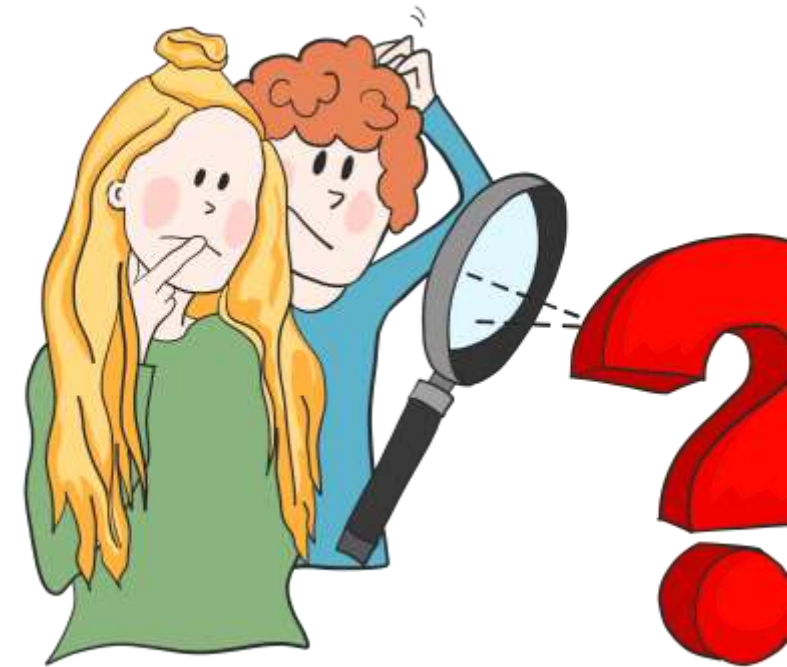
# Analyze



- The aim of the **analyse** is to see patterns and to achieve an understanding of the challenge....

## On the A3 Paper....

- What did the **whole group** notice about the challenge?
  - Put the post-its with points that all share here
- What did **a few participants** notice about the challenge?
  - Put the Post-it notes that more than one have here.
- What did **only one** participant notice about the challenge?
  - Put the Post-its with only one have noted.



# Analyze



Short analytic talk in the group about the data you got from the interview with the external person.

Which knowledge domains are already represented in the group about the challenge?

Is there any further knowledge you need to find in your team in order to understand the challenge?

