

Josep Laporte Library

International Erasmus Staff Week 2023

David Barri

Barcelona, 20th October 2023



UAB Universitat Autònoma
de Barcelona

Once upon a time...

Hospital of the Holy Cross



Image from:
lespedresdebarcelona.blogspot.com

Hospital of the Holy Cross

- Located in the Raval neighbourhood of Barcelona
- Start of construction: 1401, in the time of king Martin the Humane
- Architectural style: Gothic

- The first big hospital in Barcelona
- The first hospital complex in Europe
- In operation for more than 500 years (from 1414 to 1929)

Hospital of the Holy Cross



Image from:
lespedresdebarcelona.blogspot.com

Hospital of the Holy Cross

- In the 20th century, with the increase in the city's population, it became too small.
- A new, larger hospital complex was built in 1929 away from the center for hygienic reasons.
- As an anecdote, Antoni Gaudí was one of the last patients of the old hospital. He died there in 1926.

Image from:
es.aleteia.org



Hospital of the Holy Cross and Saint Paul



Image from:
lespedresdebarcelona.blogspot.com

Hospital of the Holy Cross and Saint Paul

- Located in the Eixample district of Barcelona
- Start of construction: 1902, by Lluís Domènech i Montaner
- Architectural style: Modernism
- In operation for 80 years (from 1929 to 2009)
- Recognized as a World Heritage Site by UNESCO (1997)

Hospital of the Holy Cross and Saint Paul



Image from:
lespedresdebarcelona.blogspot.com

Hospital of the Holy Cross and Saint Paul



Image from:
lespedresdebarcelona.blogspot.com

Hospital of the Holy Cross and Saint Paul



Image from:
lespedresdebarcelona.blogspot.com

Hospital of the Holy Cross



Image from:
lespedresdebarcelona.blogspot.com

National Library of Catalonia



Image from:
lespedresdebarcelona.blogspot.com

National Library of Catalonia



Image from:
www.bnc.cat

Convalescence House



Image from:
www.meet.barcelona

Convalescence House

- Part of the complex of the Hospital of the Holy Cross and Saint Paul
- Independent building from the rest of the Hospital complex
- Place where patients recovered after being discharged
- Currently, it hosts academic or cultural events (courses, conferences...), national or international
- Seat of the **Josep Laporte Library**

Josep Laporte Library

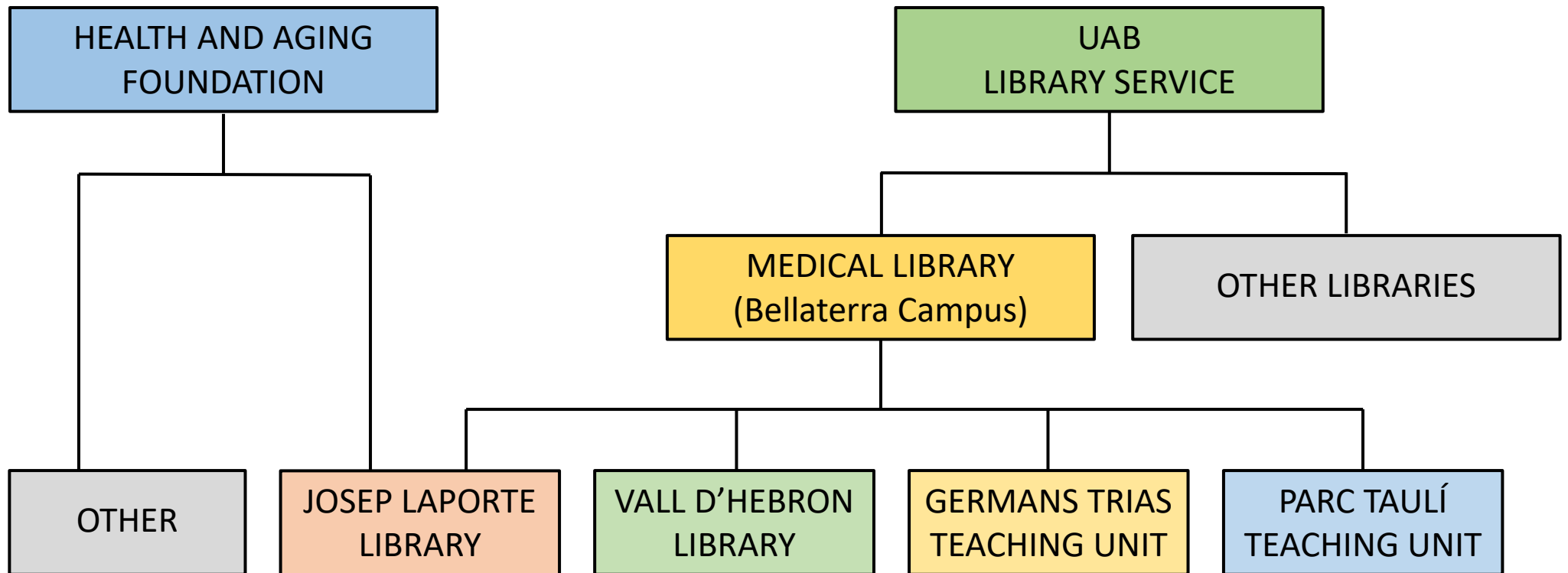


Josep Laporte Library

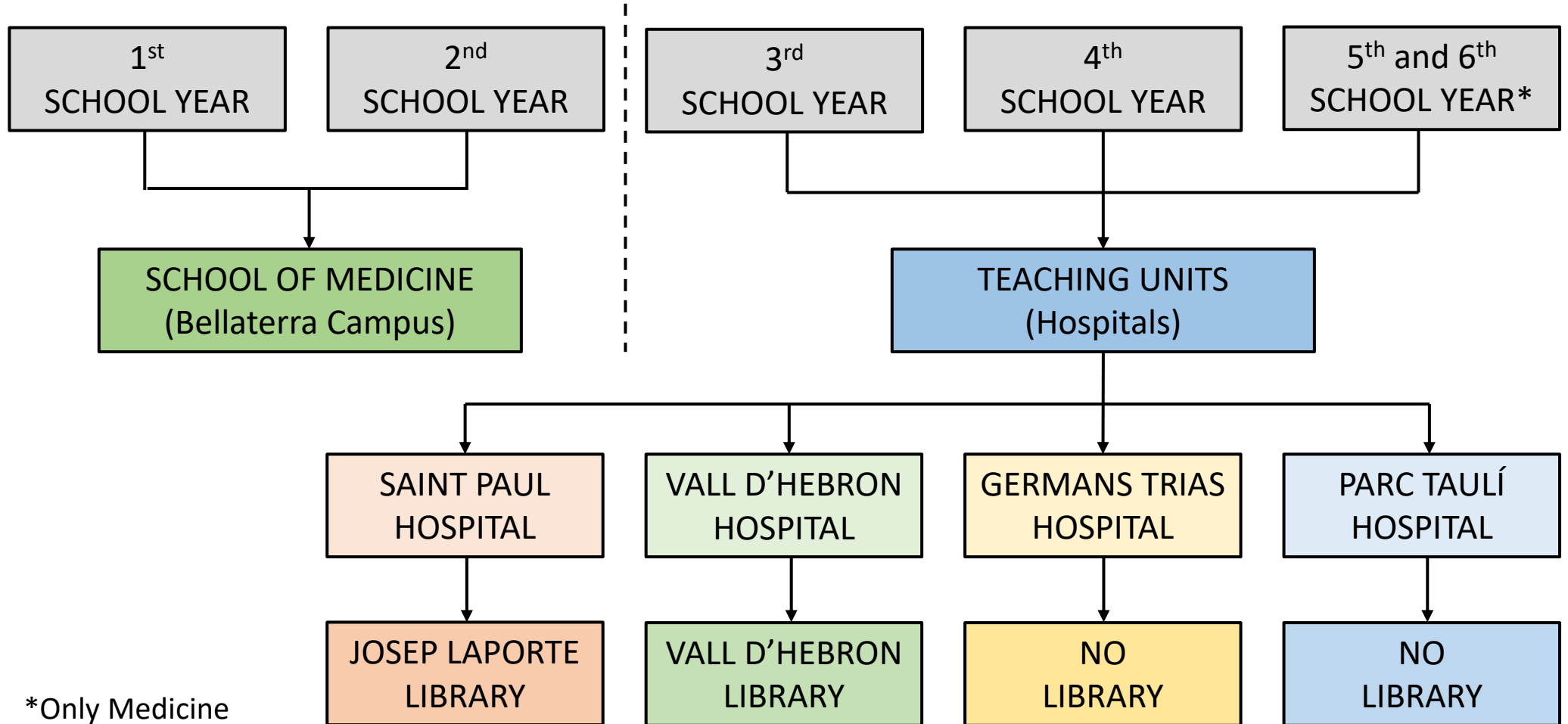
FEATURES (1)

- Located in the Convalescence House
- Area: 1 370 m²
- 152 seats in 2 halls
- Specialized in health sciences
- Management by the Health and Aging Foundation
- Running by the UAB Medical Library (Bellaterra Campus)

Josep Laporte Library



Bachelor's degree Medicine / Nursing / Physiotherapy



Josep Laporte Library

FEATURES (2)

- Support for students, professors and researchers:
 - Universitat Autònoma de Barcelona (UAB)
 - Health and Aging Foundation
 - Institut d'Investigació Biomèdica Sant Pau (IIBSP)

Josep Laporte Library

FEATURES (and 3)

- Main users: members of the Saint Paul Hospital Teaching Unit:
 - students and professors of Medicine (3rd, 4th, 5th and 6th school year)
 - students and professors of Nursing (3rd and 4th school year)
 - students and professors of Physiotherapy (3rd and 4th school year)

Josep Laporte Library

COLLECTION

- 11 000 books
- 400 journals specialized in medicine and nursing
- 250 books of a collection specialized in health and aging
- Collection for language learning of the UAB Language Service
- Digital library: digital books and journals subscribed to by the UAB Library Service

Josep Laporte Library

SERVICES (1)

- Consultation and loan of bibliographic materials for learning, teaching and research purposes
- Loan of documents from the Catalan university libraries integrated in the CSUC: Consortial Borrowing (PUC)
- Obtaining documents from other libraries not integrated in the CSUC: Interlibrary Loan (PI)

Josep Laporte Library

SERVICES (2)

- Access to databases specialized in health sciences
- Access to the digital library of the UAB Library Service
- Attention to bibliographic inquiries: in person, by telephone, by e-mail or through the Pregunt@ portal
- Group study rooms
- Wi-Fi access

Josep Laporte Library

SERVICES (3)

- Individual or group training sessions on searching for information in databases specialized in medicine or nursing, Web of Science and PubMed
- Individual or group training sessions on bibliographic reference managers (Mendeley and Zotero)
- Individual or small group advice sessions on searching for information

Josep Laporte Library

SERVICES (and 4)

- Support for research and open-access dissemination of research outputs (in collaboration with the Institut d'Investigació Biomèdica Sant Pau – IIBSP)
- Entry of research outputs of the IIBSP into the UAB Digital Documents Repository (DDD)*

*The UAB Digital Documents Repository (DDD) is the repository that collects, manages, preserves and disseminates the scientific, teaching and institutional production of the UAB.



Josep Laporte Library

LOCATION OFF BELLATERRA CAMPUS

Problem

- How to access the collection and services offered by the Medical Library (Bellaterra)?

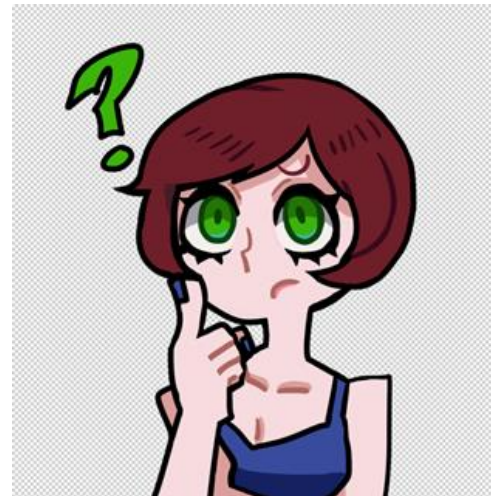


Image from:
pixabay.com

Josep Laporte Library

LOCATION OFF BELLATERRA CAMPUS

Solution

- Consortial Borrowing (PUC)
- Interlibrary Loan (PI)
- Digital library
- Online databases
- Online training sessions (MS Teams) or virtual (Moodle)
- Online advice sessions (MS Teams)



Image from:
pixabay.com

Josep Laporte Library

COORDINATION WITH THE MEDICAL LIBRARY (BELLATERRA)

- Making reading lists (assigned bibliography)
- Making library guides (how to cite, thematic resources...)
- Making teaching materials (Moodle)
- Cataloging digital books
- Entering records into the Digital Documents Repository (DDD)

Josep Laporte Library

Dr. Josep Laporte i Salas
(Reus, 1922 – Barcelona, 2005)

**El metge, el polític,
l'acadèmic**

**Homenatge en el centenari
del seu naixement**



Rector of the UAB
(1976-1980)

Minister of Health and
Social Security
(1980-1988)

Minister of Education
(1988-1992)

Thanks!



[BIBLIOTEQUES
UAB](#)



619681146



[Pregunt@](#)



[@bibliotequesUAB](#)



[@biblioteques_UAB](#)