



Cartographic materials: maps

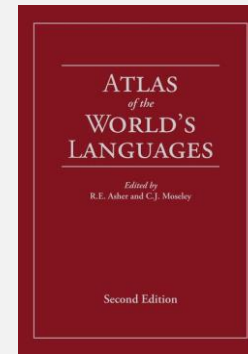
Sessió “Coneix la Cartoteca”: Grau d'Estudis d'Àsia Oriental

Types of cartography

Map sheet



Atlases



Map sheets: Informations of interest

- **Geographical context:** geopolitical questions, border conflicts, conflicts because natural resources
- **Toponymy:** place names in original languages or also transliterated
- **Physical features:** they help to explain social questions (urban growth, economic activities ...)

Map sheets: Geographical context



Base 802898AI (C00429) 11-02

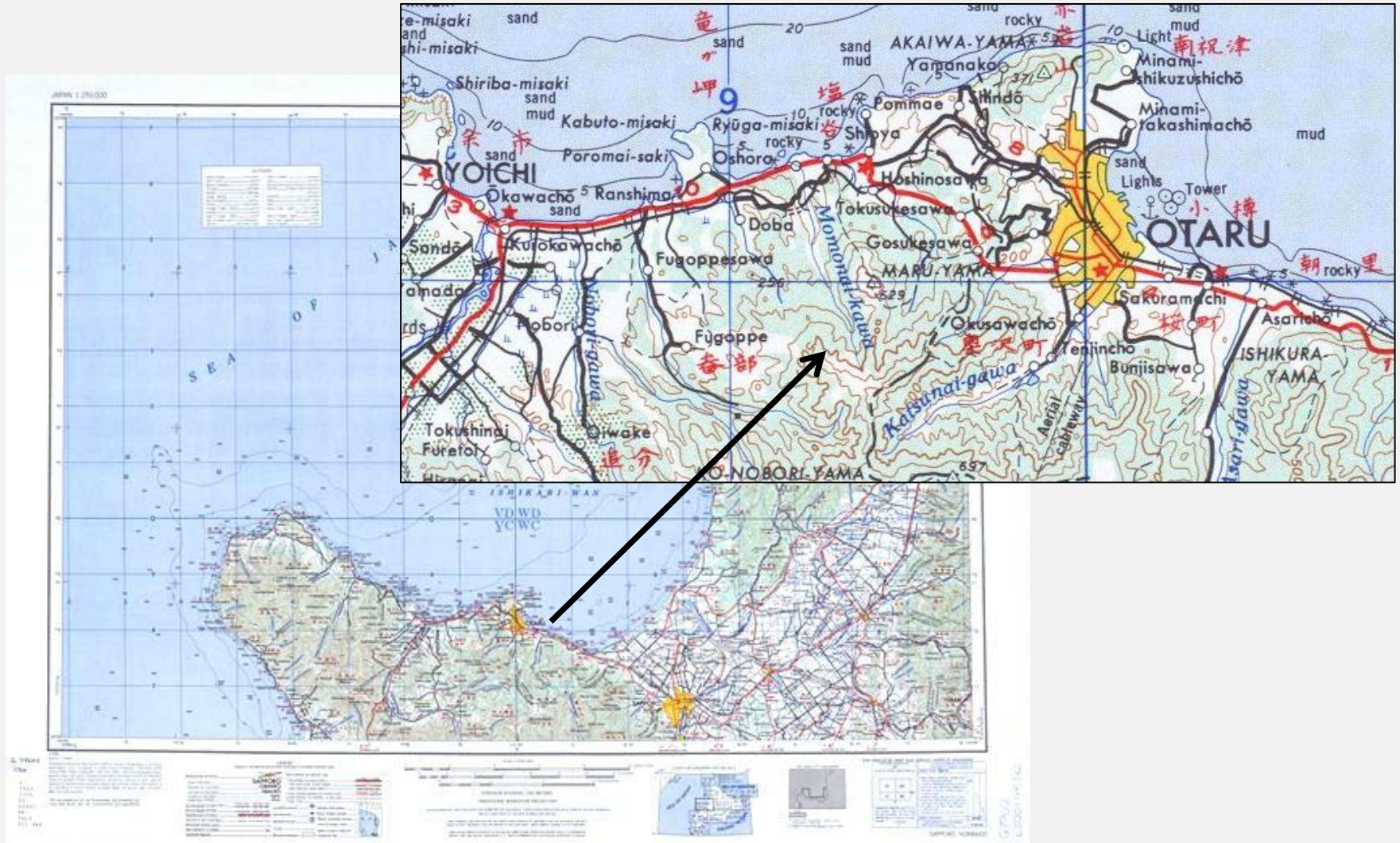
Map sheets: Geographical context



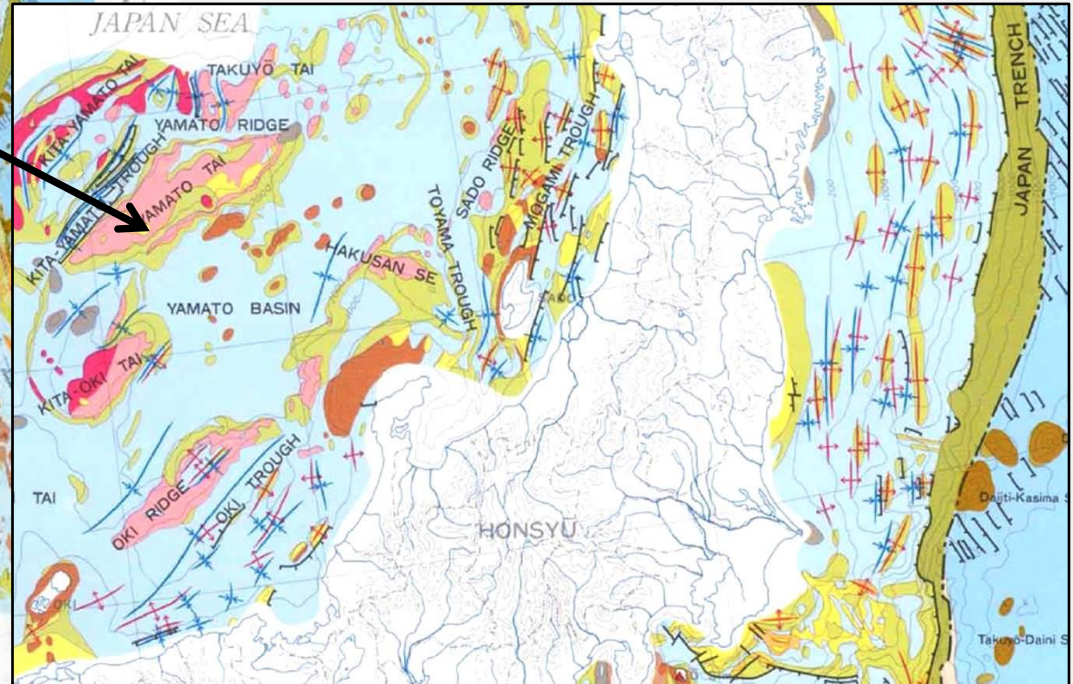
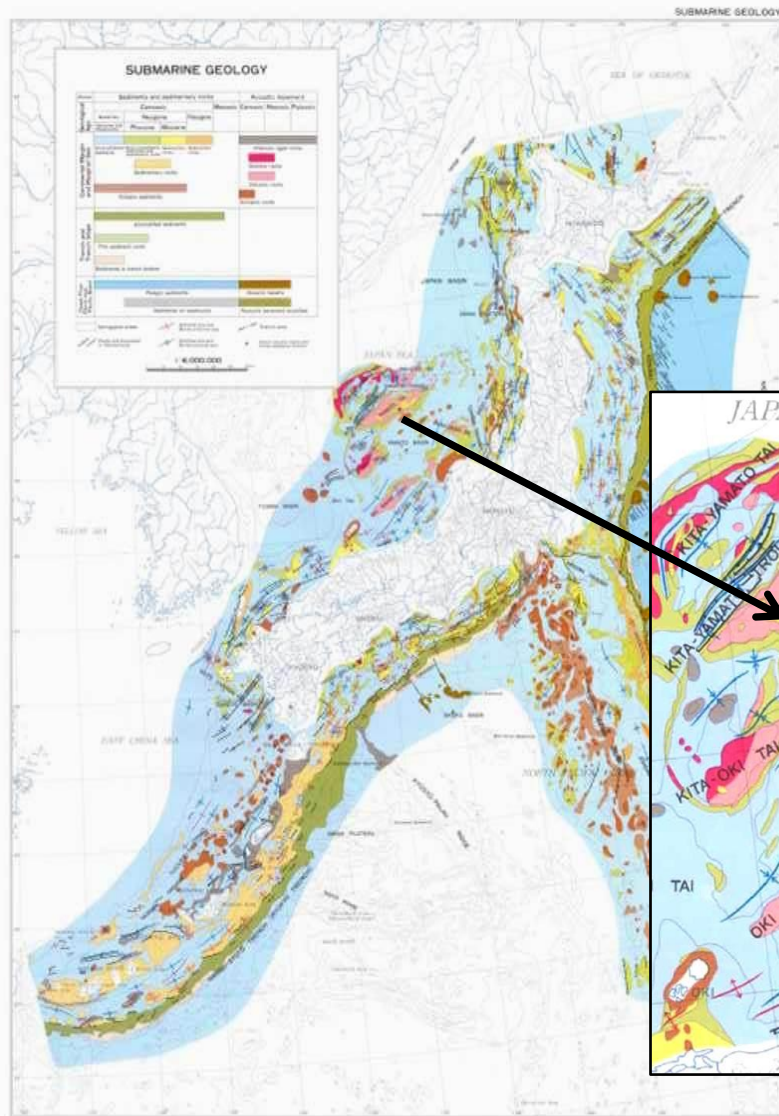
Map sheets: **Toponymy**



Map sheets: Toponymy



Map sheets: Physical features



Map sheets: **Conclusions**

Map sheets offer:

- **Descriptive information** about the geographical area: relief, borders, etc.
- **Thematic information**: usually physical features. Examples: geological maps, vegetation maps.
- Elements to understand some **social or political questions**.

Map sheets: Credits

- **Slide 4:** Indonesia
<http://legacy.lib.utexas.edu/maps/indonesia.html>
- **Slide 5:** Kuril Islands
https://en.wikipedia.org/wiki/Kuril_Islands
- **Slide 7:** Zhonghua Renmin Gongheguo gua tu
<https://www.loc.gov/item/2006635066/>
- **Slide 8:** Sapporo
<http://legacy.lib.utexas.edu/maps/ams/japan/>
- **Slide 10:** Submarine geology [Japan]
<https://www.gsi.go.jp/atlas/atlas-e-etsuran.html>



Gràcies!

[#bibliotequesUAB](#)

