

C 2o n. 37

Violin Principal.

37.

No 37

Ganimedes. Schotisch

Por.

D<sup>o</sup> Jose Teodoro Vilar.

1873

41305



Introduccion

Tempo de Schotlich

Handwritten musical notation for the introduction section, featuring two staves with treble and bass clefs, a key signature of three sharps (F#, C#, G#), and a common time signature (C). The notation includes various rhythmic values and dynamic markings such as 'p' and 'cres'.

Schotlich

*2 a vez forte*

*tutti*



Handwritten musical notation on a single staff, featuring a series of notes and rests, possibly representing a vocal line or a specific instrument part.

Handwritten musical notation on a single staff, including a section with dense, overlapping notes and a section with a key signature change to two sharps (F# and C#) and a time signature of 3/4, labeled "Piston".

Handwritten musical notation on two staves. The upper staff is labeled "Clar" and contains notes with stems. The lower staff contains notes with stems and rests, possibly representing a bass line or accompaniment.

Handwritten musical notation on two staves. The upper staff contains notes with stems and rests. The lower staff contains notes with stems and rests, including a section with a key signature change to two sharps (F# and C#) and a time signature of 3/4, labeled "89".

Handwritten musical notation on a single staff, featuring a series of notes and rests, possibly representing a vocal line or a specific instrument part.



D. C. al *Sy* del  $\sharp$  segue

Roda  $8^a$



Violins.

Galimedes  
Schotisch

par


W. Lave







Handwritten musical notation on three staves. The first staff begins with a treble clef and a sharp sign. The second staff begins with a bass clef and a sharp sign, and includes the instruction *loco*. The third staff continues the bass line with a sharp sign.

D. C. al Fine y del  *segue*

Handwritten musical notation for a section labeled *Coda*. The first staff begins with a treble clef and a sharp sign, and includes the instruction *loco*. The second staff continues the bass line with a sharp sign and ends with a long horizontal line.



Violin 2<sup>o</sup>.

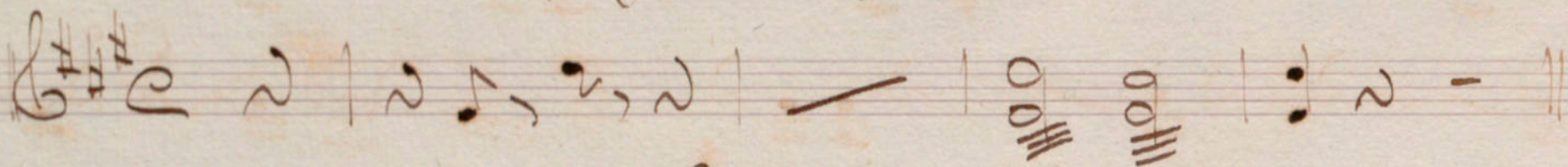
Ganymedes. Schotisch

Por

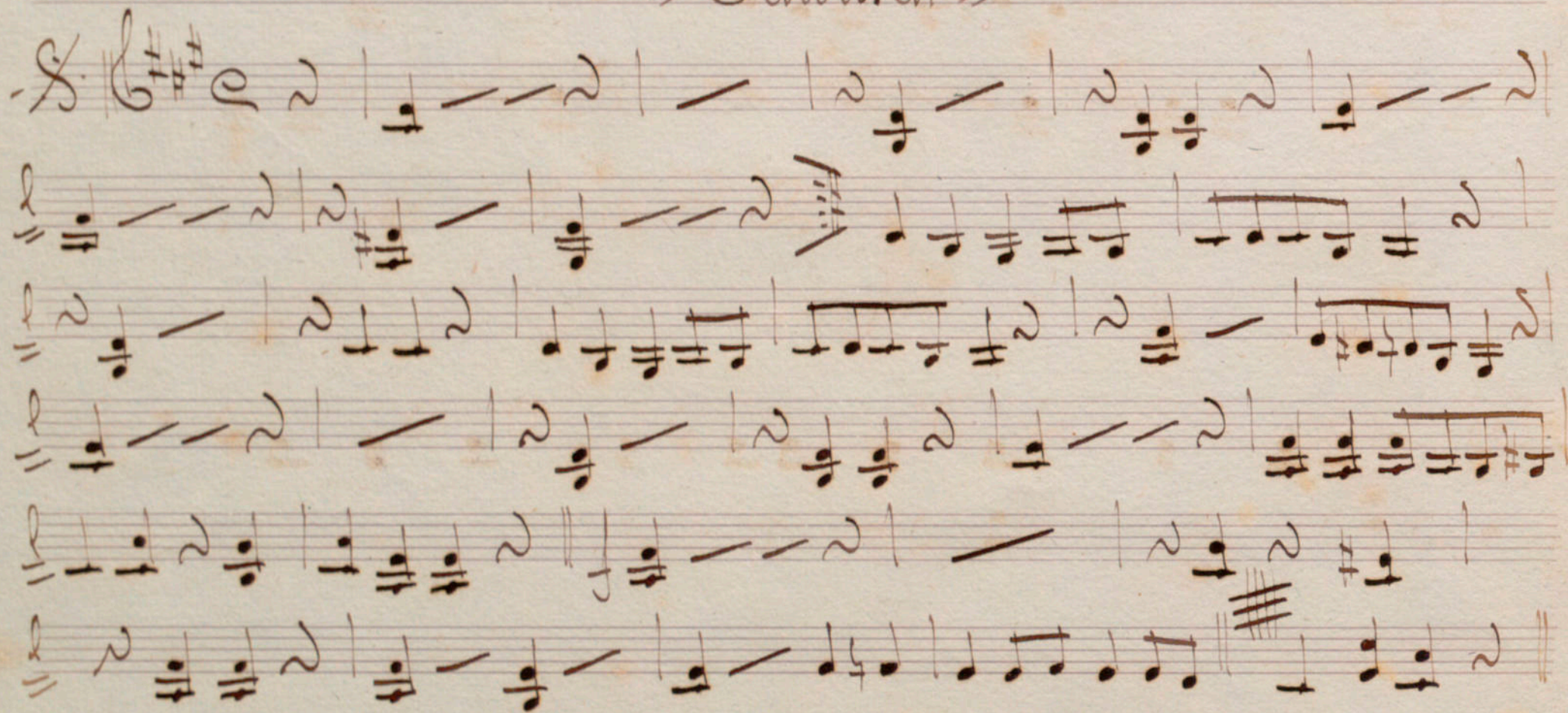
Vilar



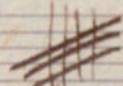
*Introducon*



*Schotisch*





D. C. al-F. y del  sigue

Coda



Viola

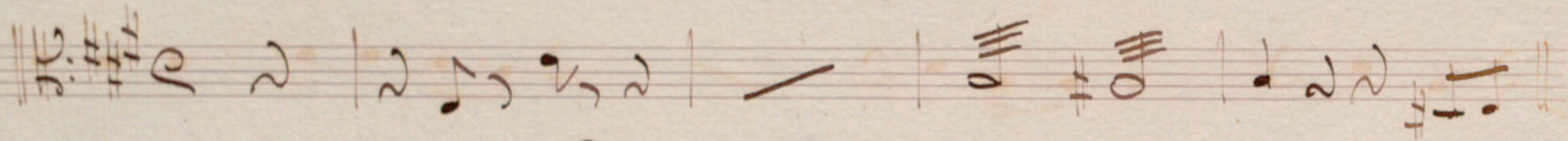
Ganimedes Schotisch

Por

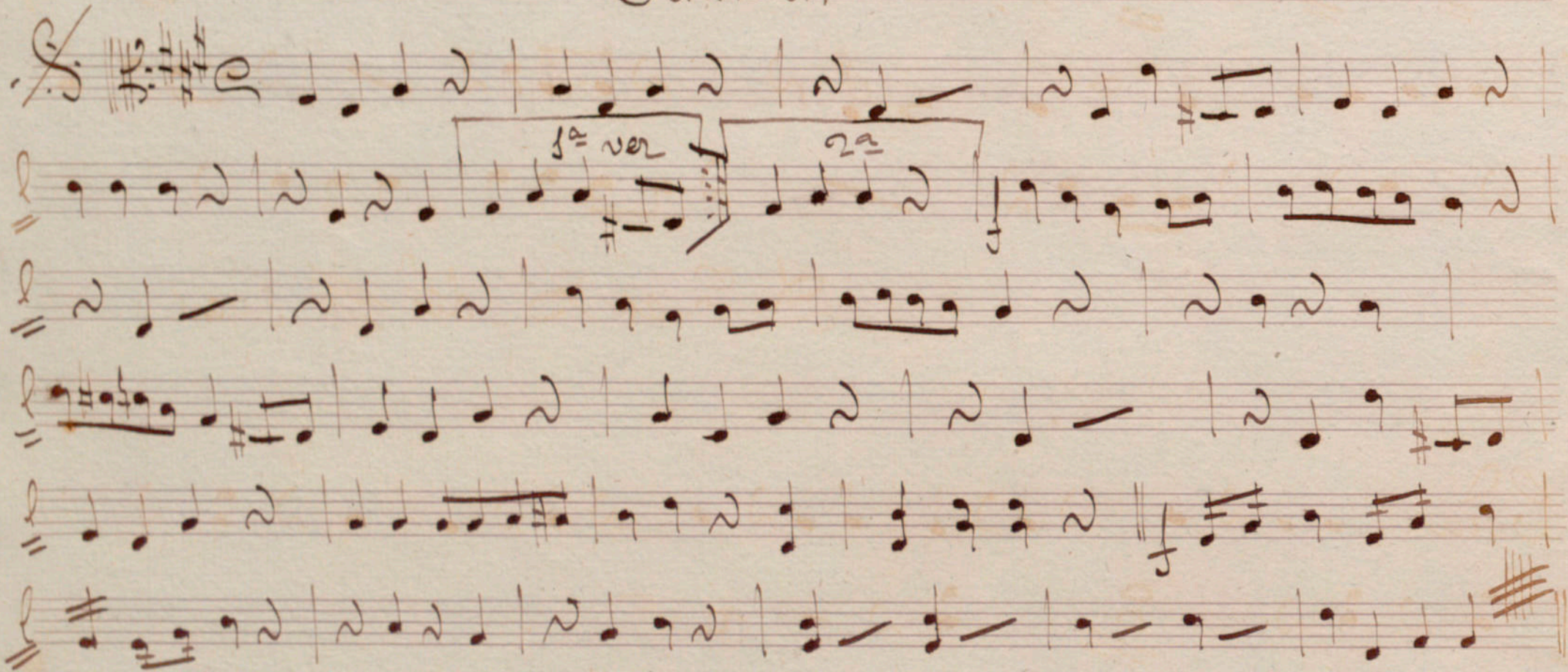
Vilar



Introd<sup>on</sup>

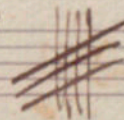


Schotisch





Handwritten musical score consisting of five staves. The notation includes various note values, rests, and bar lines. A key signature change to two sharps (F# and C#) is indicated at the beginning of the second staff. The music concludes with a double bar line and repeat dots at the end of the fifth staff.

D. C. al. F. y del  segue

Handwritten musical score for the Coda section, consisting of two staves. The word "Coda" is written at the beginning of the first staff. The notation includes notes, rests, and a final double bar line with repeat dots. The second staff begins with a treble clef and contains notes and rests, ending with a double bar line and repeat dots.



Contrabajo

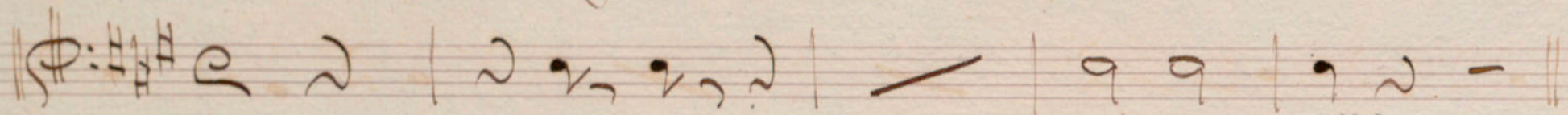
Yanimesdes Schotisch

Por

Hilar

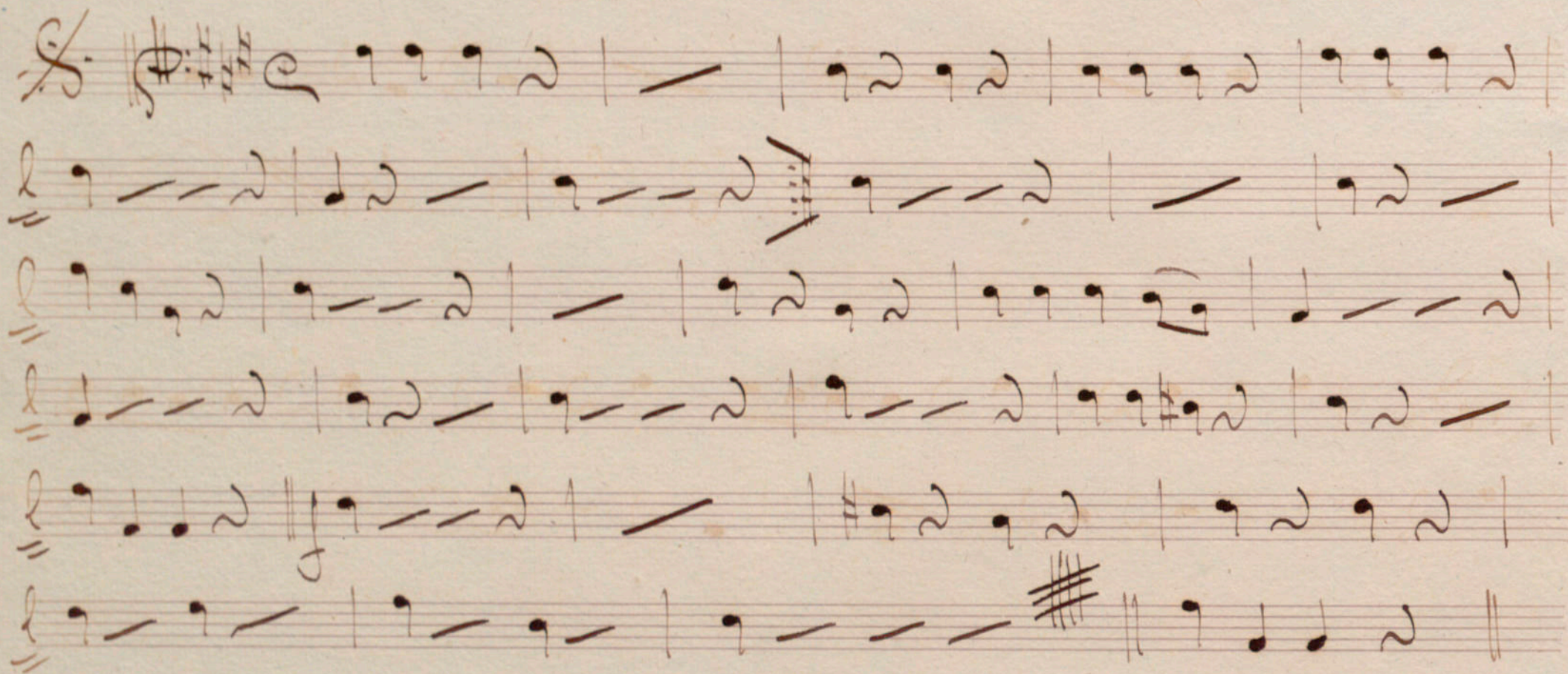


Introd<sup>on</sup>



*vall.*

Schotisch





Handwritten musical notation on four staves. The first staff begins with a treble clef, a key signature of two sharps (F# and C#), and a 4/4 time signature. The notation consists of quarter and eighth notes, with some rests and slurs. The second and third staves have a bass clef, and the fourth staff has a treble clef.

D. C. al-Fine y del **F#** Sigue

Handwritten musical notation on two staves. The first staff begins with the word "Coda" and contains a series of notes, including a sharp sign. The second staff continues the notation and ends with a double bar line and a repeat sign.



*Martin 1<sup>o</sup>*

*Agamemdes*  
*Schotisch*

*por*

*Vilaz*



*Andante* **Introduon**

**Lebhaft**



Handwritten musical score for five staves. The music is in treble clef with a key signature of two sharps (F# and C#) and a 9/8 time signature. The notation includes various note values, rests, and bar lines. The fifth staff ends with a double bar line and a sharp sign.

Al Fine  $\#$  segue

Coda



*Flauto 2.*

*Aganimedes*  
*Scotisch*

*par*

*Vilar*



# Introd<sup>o</sup>

*g<sub>ua</sub>*  
Musical notation for the introduction, featuring a treble clef, a key signature of two sharps (F# and C#), and a common time signature (C). The notation includes several measures with notes, rests, and dynamic markings such as asterisks.

# Schotisch

Musical notation for the Schottische section, consisting of six staves. The notation is in treble clef with a key signature of two sharps and a common time signature. It includes various musical elements such as notes, rests, slurs, and dynamic markings. A first ending bracket labeled "1. u." and a second ending bracket labeled "2." are present. The piece concludes with a double bar line and a final chord.



Handwritten musical score for five staves. The first staff begins with a treble clef, a key signature of two sharps (F# and C#), and a 4/4 time signature. The music consists of a single melodic line with various note values, including quarter, eighth, and sixteenth notes, and rests. The piece concludes with a double bar line on the fifth staff.

*D.C. al. Fine del # segue*

*Coda* || Handwritten musical score for two staves. The first staff begins with the word "Coda" in a large, decorative script, followed by a double bar line. The music continues with a melodic line. The second staff concludes with a double bar line.



Clarinete 1<sup>o</sup>

Ganimedes Schotisch

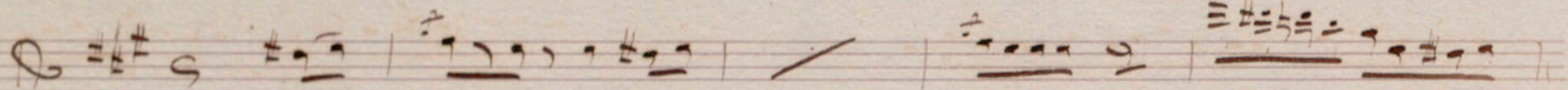
Pr.

Vitar.



*Ende*

# Introd<sup>o</sup>



# Schottisch





Handwritten musical notation on five staves. The notation includes various notes, rests, and bar lines, with some notes marked with a sharp sign (#). The first staff begins with a treble clef and a key signature of two sharps (F# and C#). The music consists of several measures of music, with some notes beamed together. The notation is written in a cursive, handwritten style.

D. C. al ~~G.~~ y del ~~#~~ sigue

Handwritten musical notation on two staves. The first staff begins with the word "Toda" followed by a double bar line. The notation includes various notes, rests, and bar lines. The second staff contains a few notes and rests, ending with a double bar line. The notation is written in a cursive, handwritten style.



Clarinete 2<sup>o</sup>

Ganimedes. Schotisch

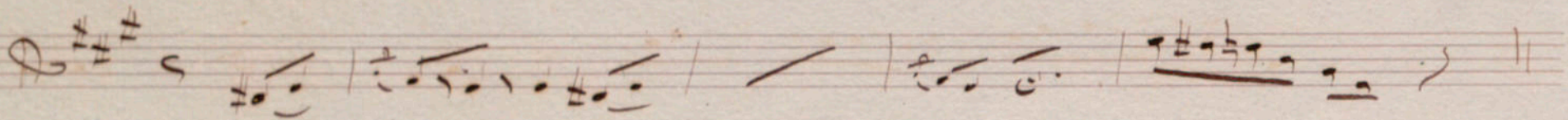
Per

Vilar.

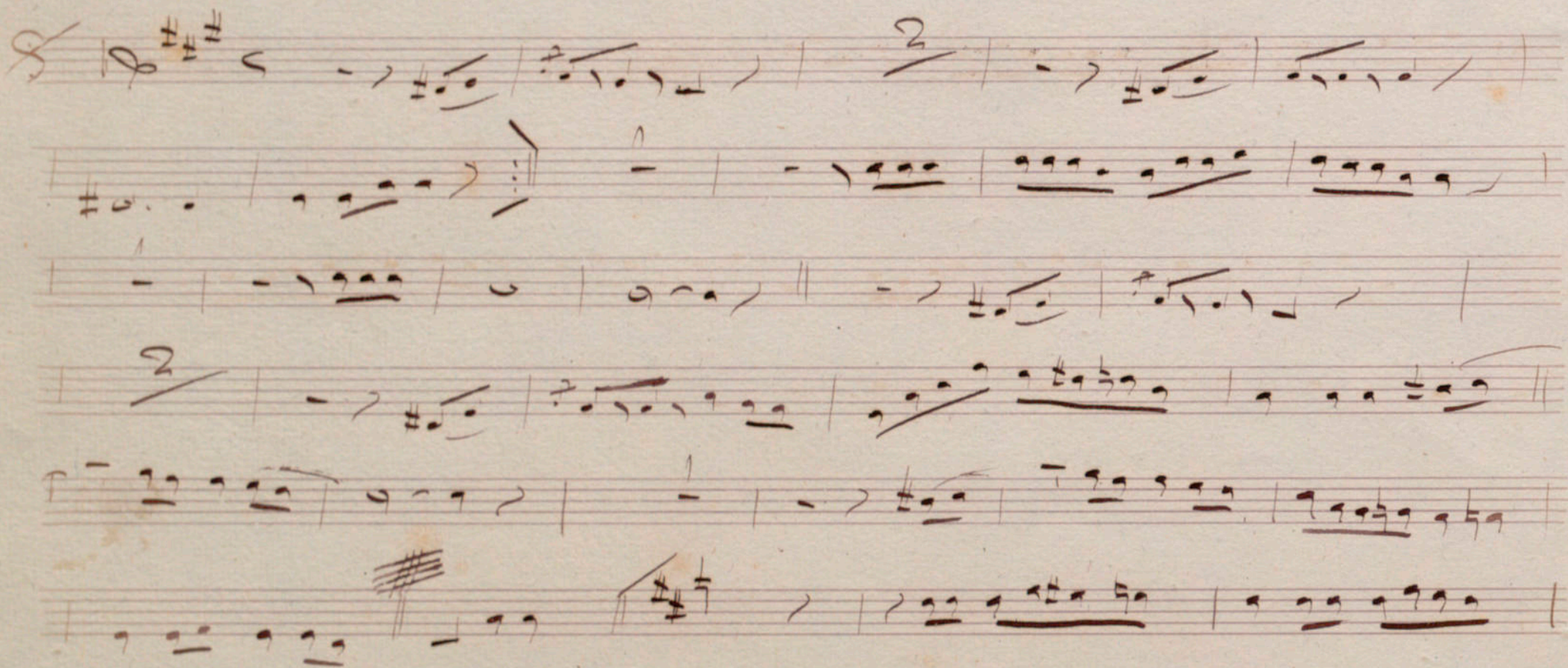


Introd<sup>n</sup>

Edo



Schotisch





Handwritten musical notation on four staves. The notation includes various rhythmic values (quarter, eighth, and sixteenth notes), rests, and bar lines. The first staff begins with a treble clef and a key signature of one sharp (F#). The music concludes with a double bar line.

*D. C. al Gy del # segue*

Handwritten musical notation for a Coda section, consisting of two staves. The first staff begins with the word "Coda" followed by a double bar line. The notation includes various rhythmic values and rests. The second staff concludes with a double bar line.



*Trompas*

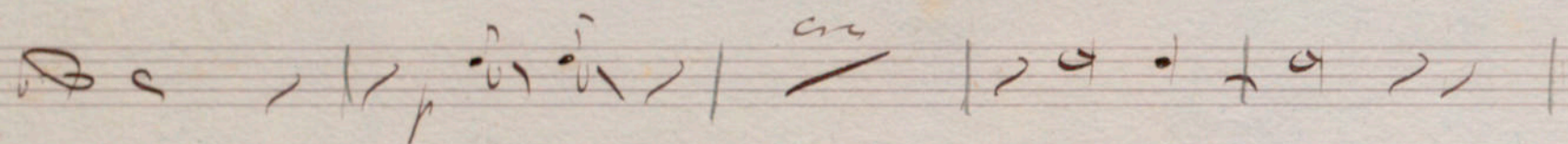
*Ganimedes Schottisch*

*Por  
Viola*

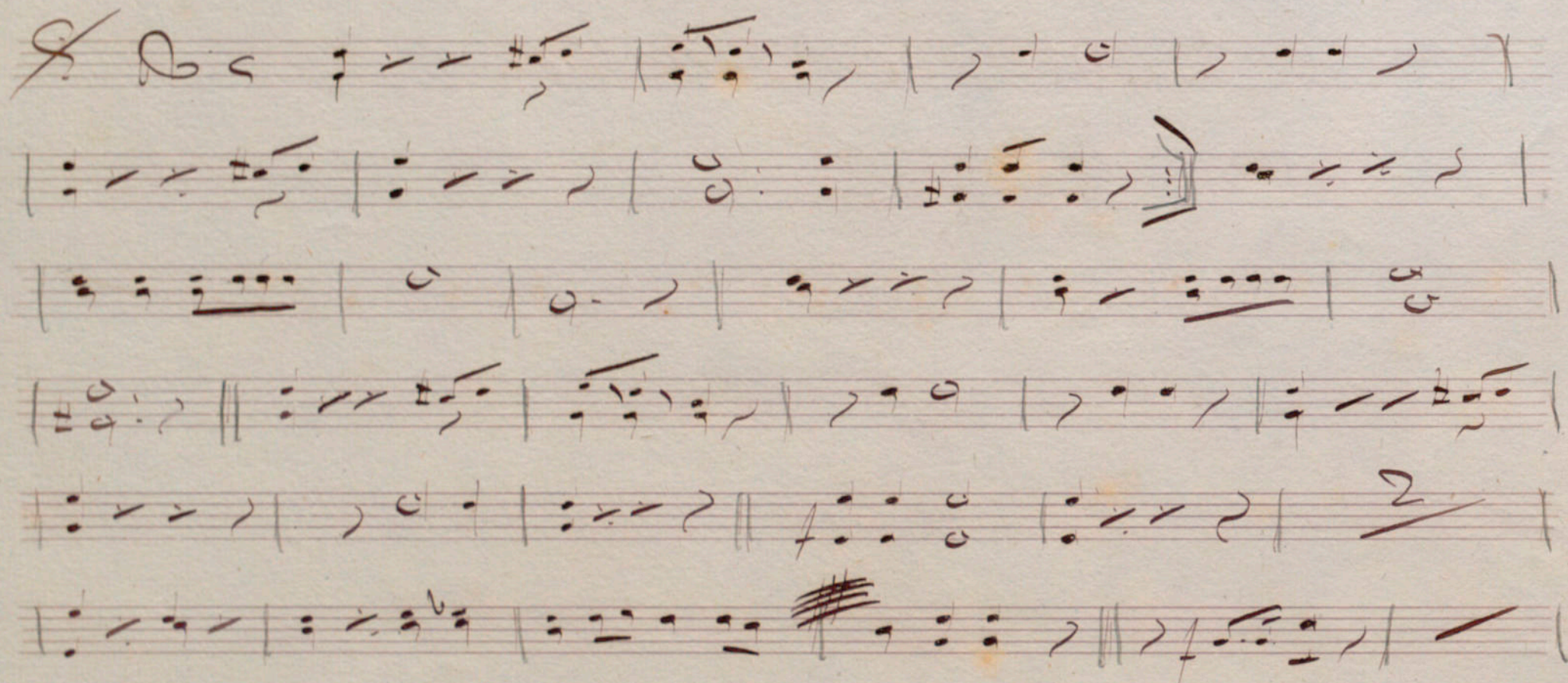


Introd<sup>n</sup>

En Re



Schottisch





Handwritten musical notation on four staves. The first staff begins with a '3' over a slash, indicating a triplet. The notation includes various note values, rests, and bar lines. The second staff contains a series of notes and rests. The third staff also features a triplet and various note values. The fourth staff contains a few notes and rests.

D. C. al G y del  $\sharp\sharp$  ligne

Coda

Handwritten musical notation for a Coda section on two staves. The first staff starts with a double bar line and contains several notes and rests. The second staff contains a few notes and rests, ending with a decorative flourish.



Cornet in C.

Ganymedes. Schottisch

For

Gitar.



Introd<sup>o</sup>

Endg

Handwritten musical notation for the introduction section. It features a treble clef, a key signature of one sharp (F#), and a common time signature (C). The notation includes a series of eighth and sixteenth notes, a double bar line, and a section marked 'rall' with a slanted line. Above the staff, there are markings 'cres' and 'rall'.

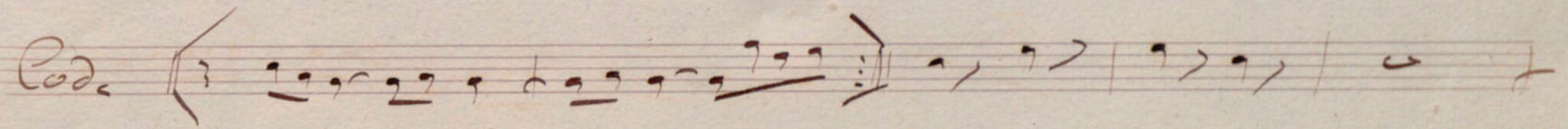
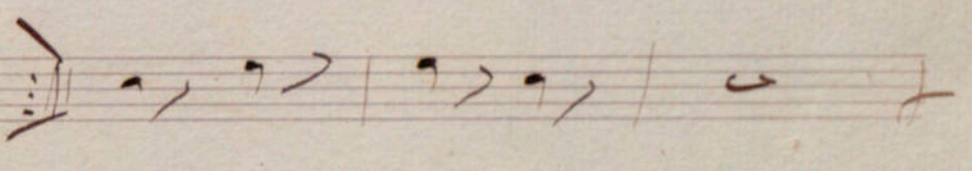
Schotisch

Handwritten musical notation for the Schotisch section. It consists of six staves of music. The first staff begins with a treble clef, a key signature of one sharp (F#), and a common time signature (C). The notation includes various rhythmic patterns, including eighth and sixteenth notes, and rests. There are several slanted lines and markings above the staves, possibly indicating dynamics or performance instructions. The piece concludes with a double bar line and a sharp sign (#).



Handwritten musical notation on five staves. The notation consists of rhythmic patterns and notes, possibly representing a specific style or exercise. The first four staves contain similar rhythmic structures, while the fifth staff ends with a double bar line.

D. C. al Gydel # rigne

Cod. { 3 }  

6



Cornetin 2<sup>e</sup>.

Ganimedes. Schotisch

Por

Viola



Introd<sup>n</sup>

En la

Handwritten musical notation for the introduction section. It consists of a single staff with a treble clef and a common time signature. The notation includes several measures of music with various note values and rests. A small 'org' marking is present above the staff.

Schottisch

Handwritten musical notation for the Schottisch section. It consists of six staves of music. The first staff begins with a treble clef and a common time signature. The notation includes various note values, rests, and dynamic markings. A '3' marking is visible above the third staff, indicating a triplet. The piece concludes with a double bar line and a sharp sign.



Handwritten musical notation on five staves. The notation consists of various rhythmic values, including eighth and sixteenth notes, and rests, organized into measures by vertical bar lines. The handwriting is in a cursive style typical of 18th or 19th-century manuscripts.

*D.C. al Fine y del # segue*

Handwritten musical notation for a Coda section, consisting of two staves. The word "Coda" is written at the beginning of the first staff. The notation includes notes and rests, with a double bar line and a repeat sign at the end of the first staff.



Trombon 1<sup>o</sup>

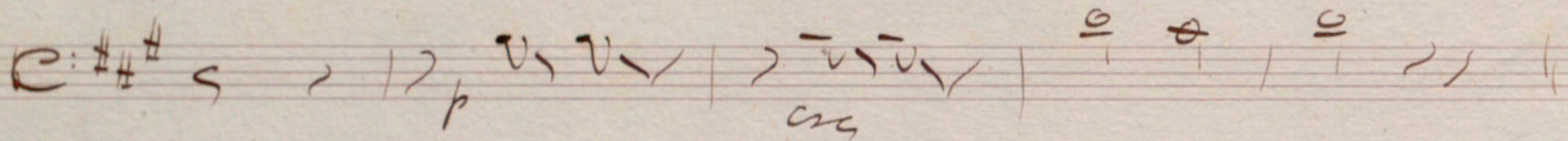
Ganimesdes. Schotisch

Por

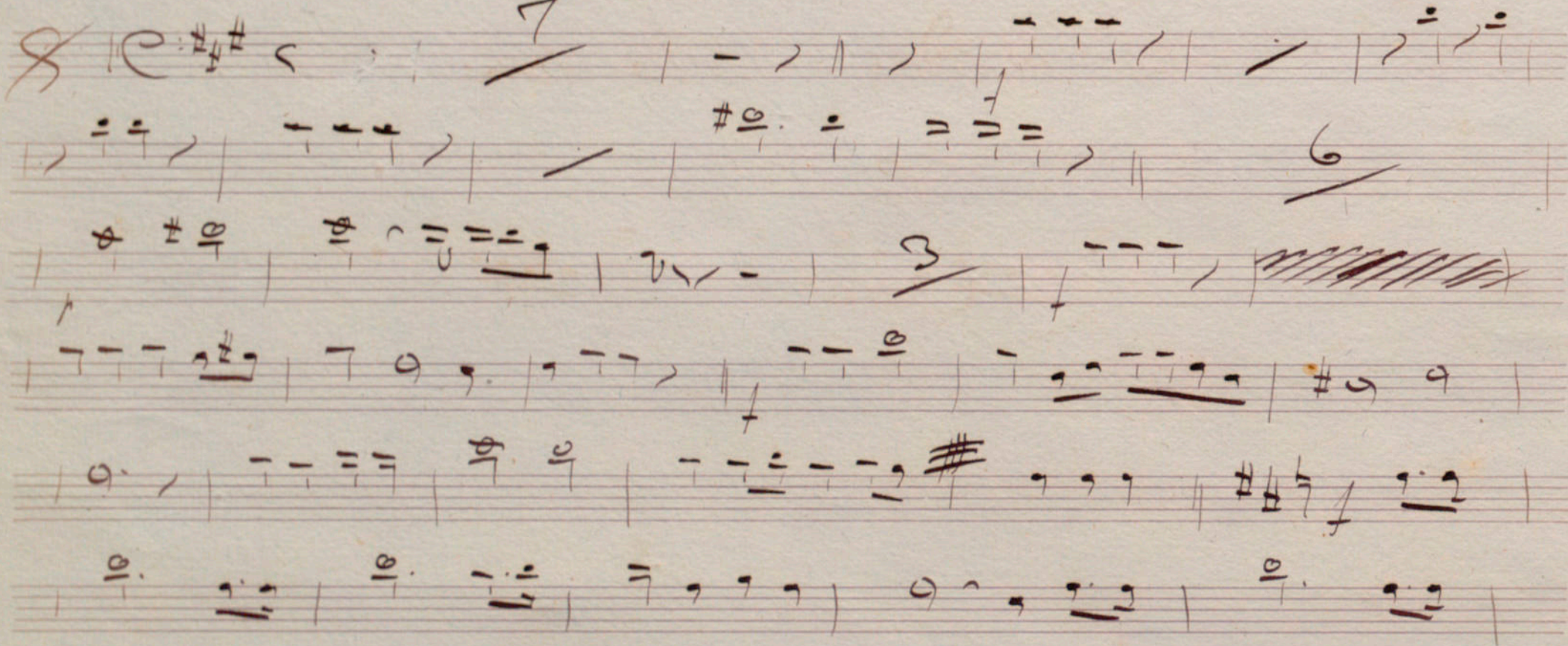
Vilar



Introd<sup>n</sup>



Schottisch





Handwritten musical notation on four staves. The first staff begins with a treble clef and a key signature of one sharp (F#). The notation includes various note values, rests, and dynamic markings such as *f* and *10*. The second staff continues the melody with similar notation. The third staff shows further development of the piece. The fourth staff concludes with the instruction "D. C. al 8 y del # signe", indicating a double bar line, a repeat sign, and a key signature change to one sharp.

Handwritten musical notation on two staves. The first staff is labeled "Coda" and begins with a double bar line and a key signature of one sharp. It contains several measures of music, including some beamed eighth notes. The second staff continues the coda with a few more notes and rests.



*Trombon 2o.*

*Ganimedes - Schotisch*

*Por*

*Coilar*



Introd<sup>n</sup>

Handwritten musical notation for the introduction section. It features a treble clef, a key signature of three sharps (F#, C#, G#), and a common time signature (C). The notation includes various note values, rests, and dynamic markings such as *erc* and *p*. The piece concludes with a double bar line.

Schottisch

Handwritten musical notation for the Schottisch section. It begins with a treble clef, a key signature of three sharps (F#, C#, G#), and a common time signature (C). The notation includes various note values, rests, and dynamic markings such as *p*. The piece concludes with a double bar line.



Handwritten musical notation on four staves. The first staff begins with a treble clef and a key signature of one sharp (F#). The notation includes various note values, rests, and dynamic markings such as *f* and *ff*. A double bar line with a '2' above it appears at the end of the first staff. The second and third staves continue the melodic line. The fourth staff contains the text "D. Cal. G. y del # sigue" written in a cursive hand, indicating a section change or a specific performance instruction.

Handwritten musical notation on two staves. The first staff begins with the word "Roda" followed by a double bar line. The notation consists of several measures of music with notes and rests. The second staff continues the notation with a few more notes and rests.



Trombon 3.

Ganimedes. Schotisch

Por

Viola



Introd<sup>n</sup>

Handwritten musical notation for the introduction, featuring a treble clef, a key signature of two sharps (F# and C#), and a common time signature (C). The notation includes a series of notes and rests, with a fermata-like symbol above the first measure.

Schotisch

Handwritten musical notation for the Schotisch section, consisting of six staves. The notation includes a treble clef, a key signature of two sharps (F# and C#), and a common time signature (C). The music features various rhythmic patterns, including eighth and sixteenth notes, and rests. There are several dynamic markings and articulation symbols throughout the piece.



Handwritten musical notation on four staves. The notation includes various notes, rests, and dynamic markings such as *f* and *10.*. The first staff begins with a treble clef and a key signature of one sharp (F#). The music is written in a cursive, handwritten style.

D. C. al *f* y del ~~##~~ *segue*

Handwritten musical notation on two staves. The first staff begins with the word *Coda* and contains several measures of music. The second staff contains a few notes and rests, ending with a double bar line.



1640 - 21

*Fiscorno*

*Ganymedes. Schottisch*

*Per*

*Gitar*



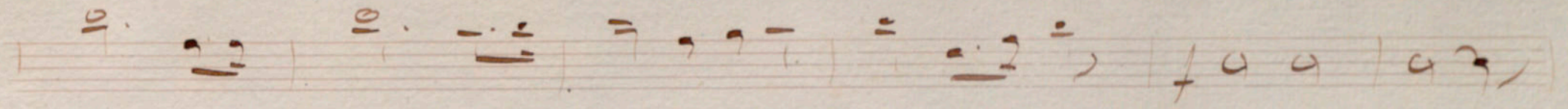
Introd<sup>n</sup>


Handwritten musical notation for the introduction, featuring a treble clef, a key signature of three sharps (F#, C#, G#), and a common time signature (C). The notation includes a series of notes and rests, with a 'cig' marking above the first measure.

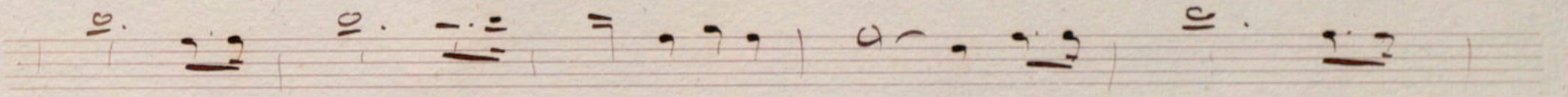
Schottisch

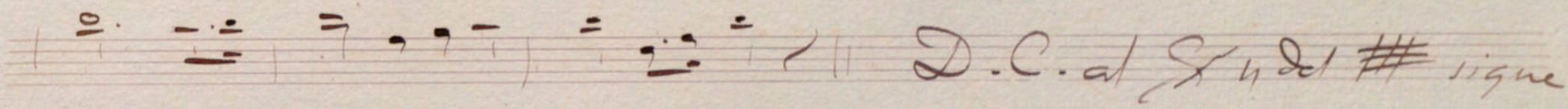
Handwritten musical notation for the Schottisch section, consisting of six staves. The first staff begins with a treble clef, a key signature of three sharps (F#, C#, G#), and a common time signature (C). The notation includes various rhythmic patterns, including eighth and sixteenth notes, and rests. A double bar line is present in the second measure of the first staff. The notation continues across six staves, ending with a double bar line.

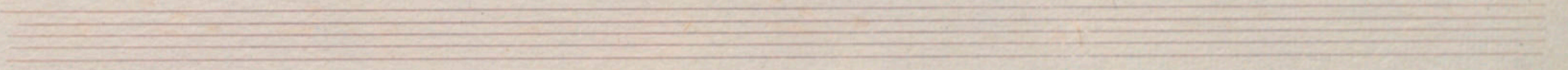


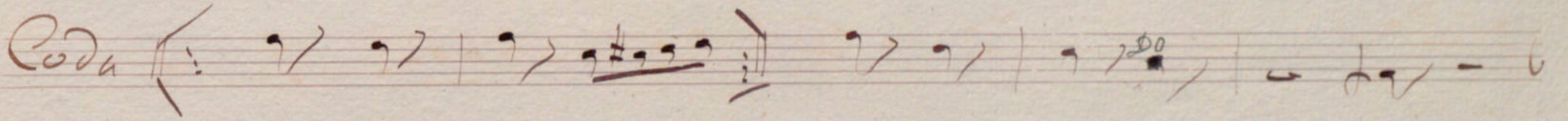
10. 

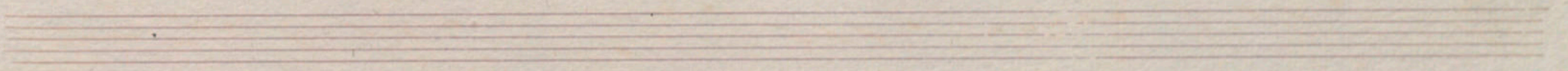


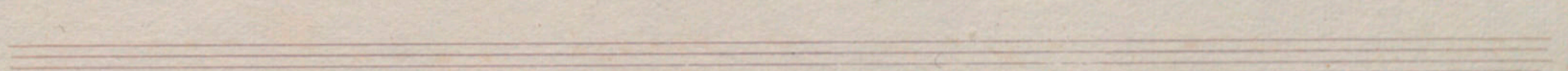
10. 

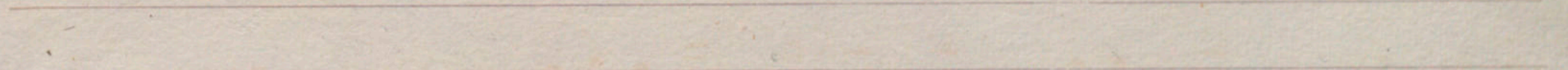
10.  D.C. al Fine del # signe

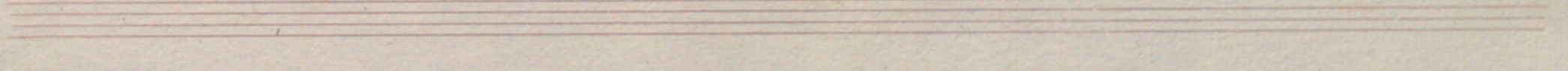


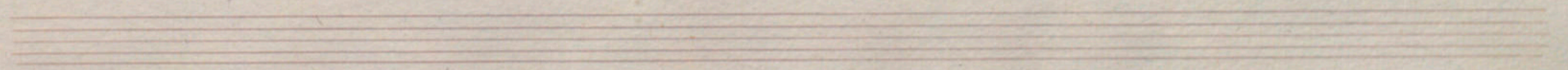
Coda 













# Ganymedes Schotisch

Tambore

Introduction *pp* *tr*

Schotisch *C* *8*

*baguettes*

*baguettes*

*tr* *baguettes*

*D.C. al G y del # signe*

Coda



Ganimedes

Schotisch

Bombo

Intro Bis 3 / | - 2 / ||

Schotisch Bis 8 / | + + + + / | / | - 2 - / | / |

| + + + + / | / | + + + + / | + + + + / | 8 / || # / + + + + / |

| + + + + / | + + + + / | + + + + / | + - - / | / | 2 / | - - - /

| + - - / | + + + + / # + + + + / | 8 / | + + + + / | + - - / |

| 2 / | + + + + / | / | / | - - - / | 8 / ||

D. C. ad 8 y del # segue

Coda ( : + + + + / | + + + + / | / | + - - / | - - - / | 6



Campanologo

Ganimedes Schottisch

Por

Gitar



Introd<sup>n</sup>

Handwritten musical notation for the introduction, featuring a treble clef, a key signature of three sharps (F#, C#, G#), and a common time signature (C). The notation includes a series of notes and rests on a five-line staff.

Schottisch

Handwritten musical notation for the Schottisch section, featuring a treble clef, a key signature of three sharps (F#, C#, G#), and a common time signature (C). The notation includes a series of notes and rests on a five-line staff, with a 3-measure rest and a sharp sign visible.



D. C. al G. y del # signe

Coda || *Facet* / C