

Violin I^o



3.
~~L'élégance Parisienne~~

Waarurka

E. Tavan.

24 Introd. Movt de Mazurka 6/8

Handwritten musical notation on a single staff, featuring a treble clef, a key signature of one sharp (F#), and a 6/8 time signature. The notation includes various note values and rests.

Mazurka

Handwritten musical notation on a single staff, continuing the Mazurka piece. It includes dynamic markings such as *mf* and *res.*

Handwritten musical notation on a single staff, featuring dynamic markings *mf* and *res.* and numerical markings *12* and *92*.

Handwritten musical notation on a single staff, featuring dynamic markings *mf* and *res.*

Handwritten musical notation on a single staff, featuring dynamic markings *res.* and numerical markings *12* and *92*.

Handwritten musical notation on a single staff, featuring dynamic markings *mf* and numerical markings *12* and *92*.

Trio

Handwritten musical notation on a single staff, featuring a treble clef, a key signature of one sharp (F#), and a 6/8 time signature. It includes dynamic markings such as *mf* and *res.* and numerical markings *12* and *92*.

Coda

Handwritten musical score on ten staves. The notation includes various notes, rests, and dynamic markings such as *mf* and *res*. The score is written in a cursive style. A large signature, "D. C. A. S.", is written across the middle of the page. The word "Coda" is written on the left side of the sixth staff. The manuscript shows signs of age, including a tear at the bottom edge.

Violin 2^o



L'élégance Parisienne

Moururka

E. Tavan.

Introd. Mov. de Mazurka

Musical staff with notes and rests.

Mazurka

Musical staff with notes and rests.

Musical staff with notes and rests.

Musical staff with notes and rests.

Musical staff with notes and rests.

Musical staff with notes and rests.

Musical staff with notes and rests.

Empty musical staves at the bottom of the page.

Handwritten musical score, first system. The music is written on four staves. The first staff begins with a treble clef and a key signature of one flat (B-flat). The first measure of the first staff is marked with a dynamic of *pa*. The second measure of the first staff is marked with a dynamic of *mf*. The music continues across the four staves, ending with a double bar line and the instruction *D.C. al F.*

Handwritten musical score, second system. The music is written on three staves. The first staff begins with the word *Coda* and a key signature of one flat (B-flat). The first measure of the first staff is marked with a dynamic of *mf*. The music continues across the three staves, ending with a double bar line and a sharp sign (#).

Violas



L'élégance Parisienne

Mozurka

E. Cavan.

Introd. Mov. 4 de Mazurka

Handwritten musical notation for the introduction, featuring a treble clef, a key signature of one flat, and a 3/4 time signature. The notation consists of a single melodic line with several measures of music.

Mazurka

Handwritten musical notation for the first part of the Mazurka, starting with a treble clef, one flat, and 3/4 time. It includes dynamic markings such as *f* and *mf*.

Handwritten musical notation for the second part of the Mazurka, featuring first and second endings marked with "1a" and "2a". It includes dynamic markings like *mf* and *cres.*

Handwritten musical notation for the third part of the Mazurka, including a *cres.* marking.

Handwritten musical notation for the fourth part of the Mazurka, ending with a *Coda* marking.

Trio

Handwritten musical notation for the Trio section, starting with a treble clef, one flat, and 3/4 time. It includes dynamic markings such as *mf* and *cres.*

Three empty musical staves at the bottom of the page.

Handwritten musical score for the first system. The top staff is a vocal line with notes and rests. The bottom staff is a piano accompaniment. The score includes dynamic markings such as *mf* and *Dimi:*. There are two first endings marked *1a* and *2a* in the vocal line. The system concludes with the instruction *D. C. al. G.*

Handwritten musical score for the second system, starting with a *Coda* section. The top staff is a vocal line and the bottom staff is a piano accompaniment. The *Coda* section is marked with *mf*. The system ends with a double bar line and a sharp sign (#).

Cello.



L'élégance Parisienne.

Marurka

E. Tavan.

Introd. *Mouv^t de Mazurka* || $\text{Q}:\flat$ $\frac{3}{4}$ ff

Handwritten musical notation on a single staff, featuring a treble clef, a key signature of one sharp (F#), and a 3/4 time signature. The music begins with a dynamic marking of *mf*.

Mazurka || $\text{Q}:\flat$ $\frac{3}{4}$ mf

Handwritten musical notation on a single staff, continuing the piece with a dynamic marking of *mf*.

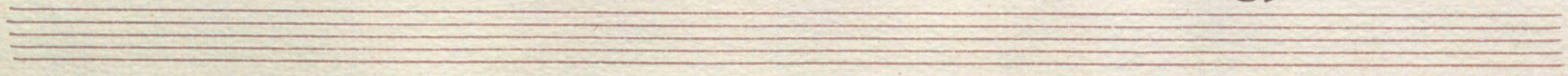
Handwritten musical notation on a single staff, including first and second endings marked *1^a* and *2^a*, with a dynamic marking of *mf*.

Handwritten musical notation on a single staff, featuring a dynamic marking of *mf* and a *cres* (crescendo) marking.

Handwritten musical notation on a single staff, including first and second endings marked *1^a* and *2^a*, a *Coda* marking, and a dynamic marking of *cres*.

Handwritten musical notation on a single staff, featuring a dynamic marking of *mf*.

Handwritten musical notation on a single staff, including a first ending marked *1^a vez*, a dynamic marking of *cres*, and a *Dim* (diminuendo) marking.



22

Pizz:

mf

arco

pizz:

f

arco

mf

D. C. al. f.

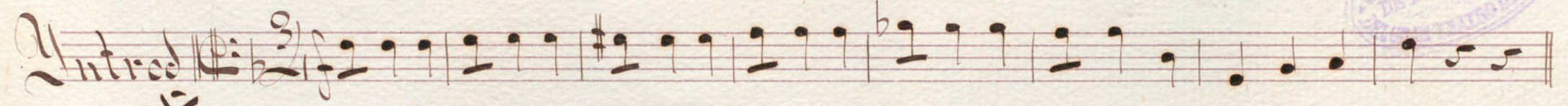
Pizz:

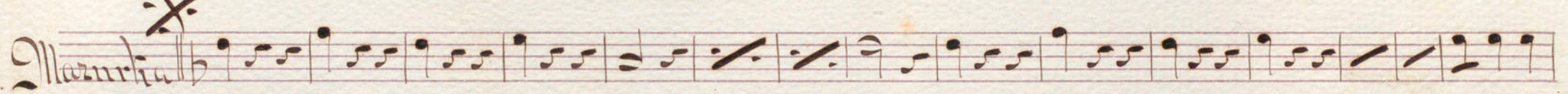
Coda $\#b3$

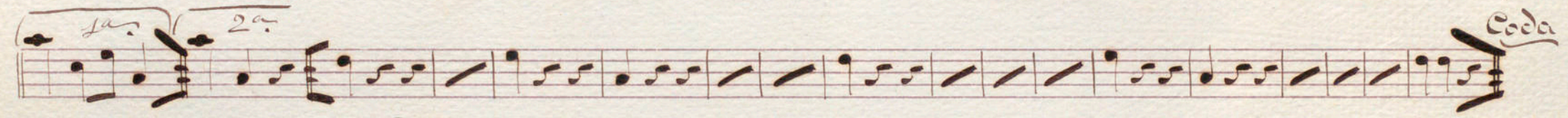
mf

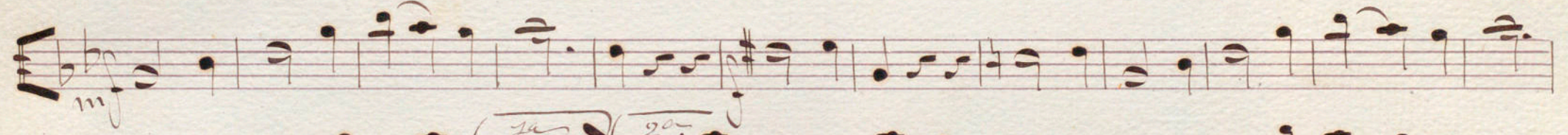
cres.

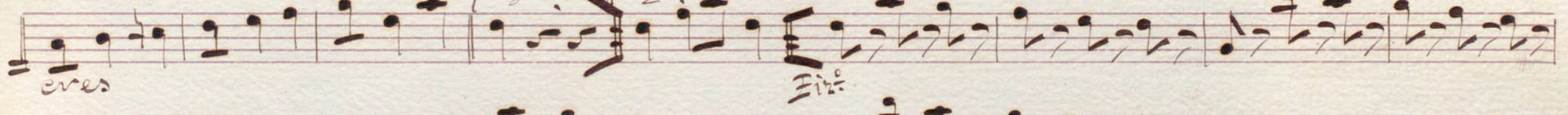
Baran Elegance Parisienne // *Bajo Bello*

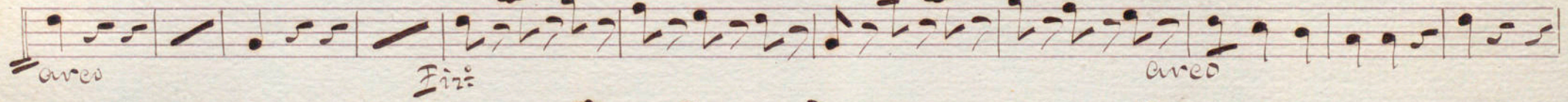
Introd 

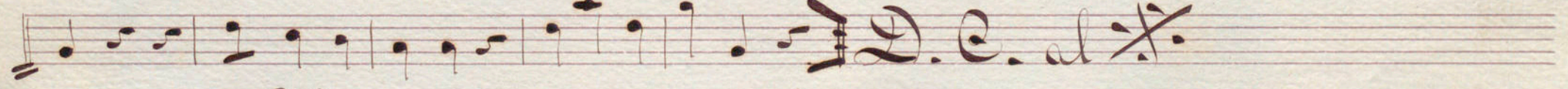
Mazurka 

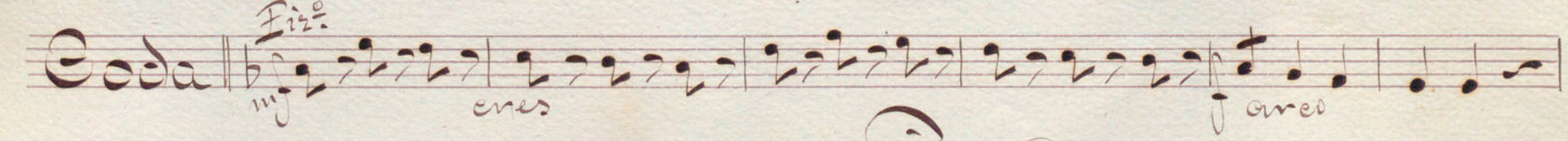
1a *2a*  *Coda*

mf 

crce *1a* *2a* *Fiz.* 

crce *Fiz.* *crce* 

D. C. al 

Fiz. *crce* *crce* *Coda* 



Flautas.

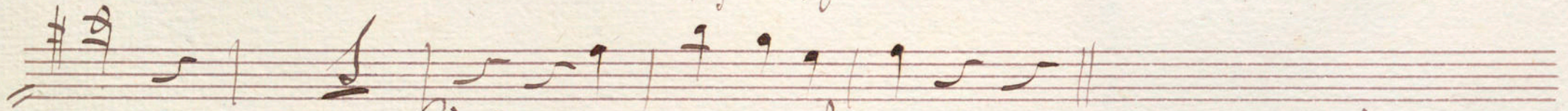


/// Elegance Parisienne ///

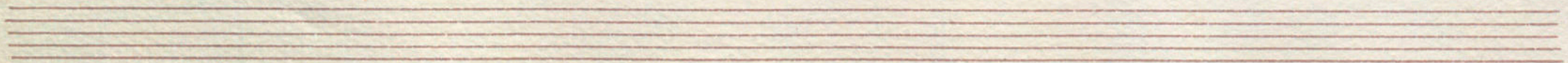
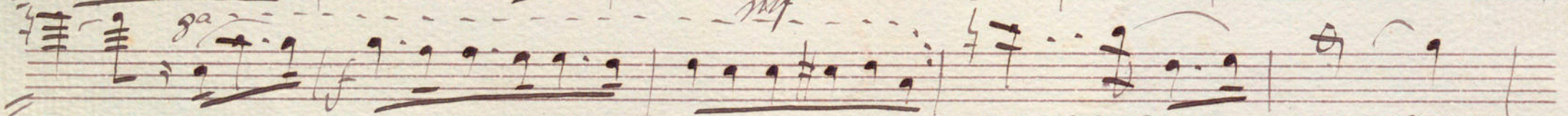
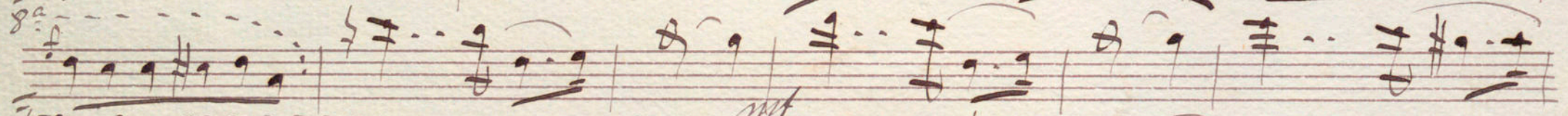
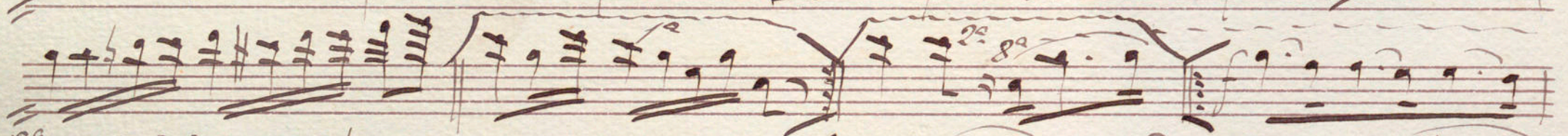
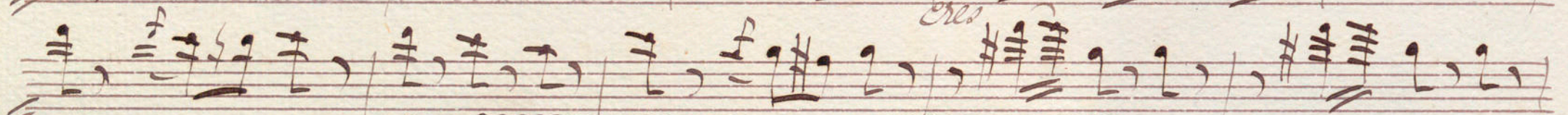
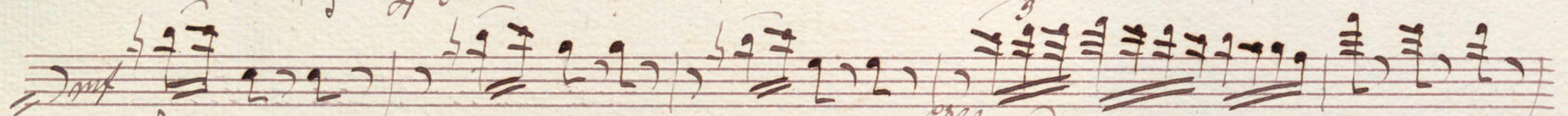
Marurka

/// E. Cavan ///

Introd. Mouvt de Mazurka || $\text{G}:\flat 3/4$ *f*



Mazurka || $\text{G}:\flat 3/4$



Oboe 1^o



L'élégance Parisienne

Wearurka

E. Tavan.

Introd^t Nouv^t de Mazurka || $\text{G}:\flat\text{3}/4$ *f*

Mazurka || $\text{G}:\flat\text{3}/4$ *f*

Coda

Handwritten musical score for the first system, consisting of five staves. The notation includes various note values, rests, and dynamic markings such as *mf* and *cres*. The piece concludes with a double bar line and the instruction *D.C. al f.*

Handwritten musical score for the second system, consisting of two staves. The first staff begins with the word *Coda* and a 3/4 time signature. The notation includes notes, rests, and dynamic markings like *mf*. The system ends with a double bar line and a sharp sign.

Obce 2^o



L'élégance Parisienne.

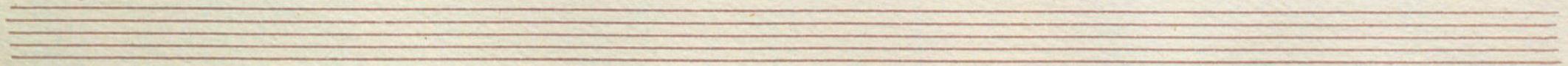
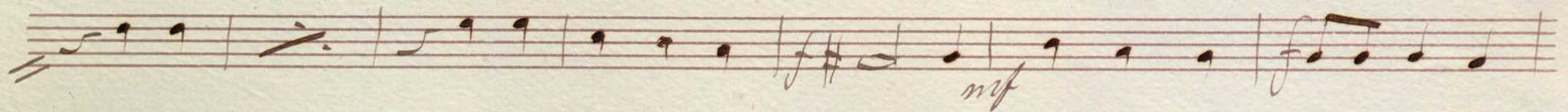
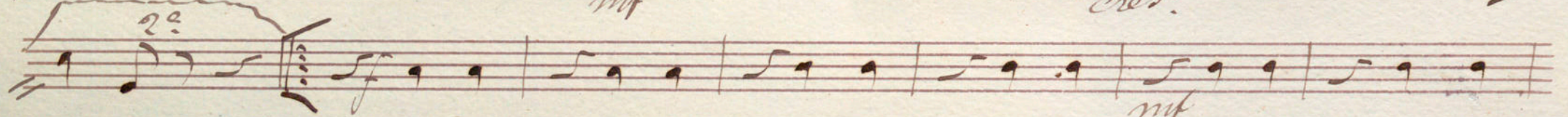
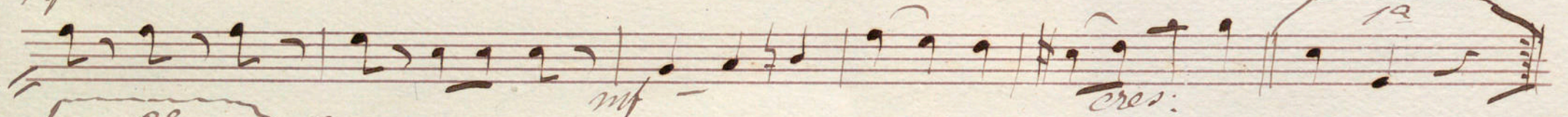
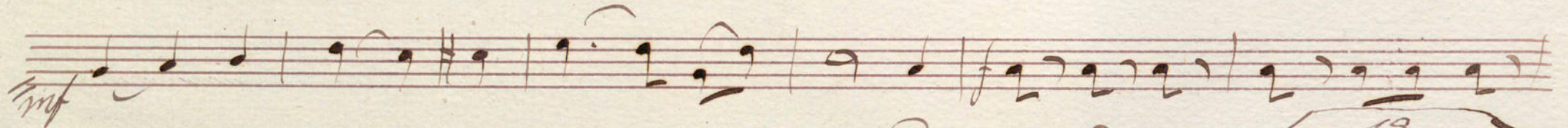
Wearurka

E. Tavan.

Intro / Mouv^t de Mazurka



Mazurka



Handwritten musical score consisting of three staves. The first staff begins with a treble clef and a key signature of one sharp (F#). The second staff begins with an alto clef. The third staff ends with the handwritten text "D. C. al F." followed by a double bar line.

Handwritten musical score consisting of two staves. The first staff is labeled "Coda" and begins with a treble clef, a key signature of one flat (Bb), and a 3/4 time signature. The word "rit." is written below the first few notes, and "eror." is written below the next few notes. The second staff concludes with a double bar line and a sharp sign (#).

Clarinete 1^o

L'élégance Parisienne

Mazurka

E. Cavan.

(En Sib)

Introd. Mouvt. de Mazurka || $\text{G.} \# \frac{3}{4} f$

Mazurka || $\text{G.} \# \frac{3}{4}$

Handwritten musical score on five staves. The notation includes treble and bass clefs, a key signature of one sharp (F#), and a 3/4 time signature. The score features various musical notations such as notes, rests, and dynamic markings. The first staff begins with a forte (*f*) dynamic. The second staff includes markings for *mf* and *mp*, along with first and second endings indicated by *1^a* and *2^a*. The fifth staff concludes with a *mf* marking and a double bar line.

cre,

D.C. al. f.

Handwritten musical score for the Coda section on two staves. The notation includes a treble clef, a key signature of one sharp (F#), and a 3/4 time signature. The word "Coda" is written at the beginning of the first staff. The score includes dynamic markings for *mf* and *cre*. The first staff ends with a double bar line and a repeat sign. The second staff continues the musical notation.

Clarinete 2^o



L'élégance Parisienne //

Wearurka

E. Tavan //

(En Sib)

Introd. *Mouv. de Mazurka* || $\text{G} \text{ 3/4}$ *f*

p

Mazurka || $\text{G} \text{ 3/4}$ *f*

mf

mf *res.*

mf

Coda

Torrio [$\text{G} \text{ 3/4}$] *mf*

mf *1a* *2a*

Handwritten musical score for the first system, consisting of three staves. The top staff begins with a treble clef and a *mf* dynamic marking. The middle staff begins with a bass clef and a *f* dynamic marking. The bottom staff begins with a bass clef and a *f* dynamic marking. The music concludes with a double bar line and the initials "D.C. al. S." written in cursive.

Handwritten musical score for the second system, consisting of two staves. The top staff begins with the word "Coda" in cursive, followed by a treble clef, a key signature of one sharp (F#), and a 3/4 time signature. The bottom staff begins with a bass clef. The music concludes with a double bar line and a sharp sign.

Mouvt. de Mazurka = L'élégance Parisienne = Mazurka = Ragot 3^e

Introd. 3/4

Mazurka 3/4

Trio 3/4

Coda 3/4

D. C. al. f.

Coda

E. Doavan *Mouv^t de Mazurka // L'élégance Parisienne // Mazurka // Ragot 2^e*

Intro || $\text{C} = \text{b}$ $\frac{3}{4}$ *f*

Mazurka || $\text{C} = \text{b}$ $\frac{3}{4}$ *f*

Coro

Trio || $\text{C} = \text{b}$ $\frac{3}{4}$ *mf*

Coda || $\text{C} = \text{b}$ $\frac{3}{4}$ *mf*

E. Caran (En Fa) Mouv^t de mazurka // L'élégance Parisienne // mazurka // Corno 1^o

Introd $\frac{3}{4}$ *mf*

Mazurka $\frac{3}{4}$ *mf*

mf

cres Coda

Trio $\frac{3}{4}$ *p*

p *mf* 1^a 2^a

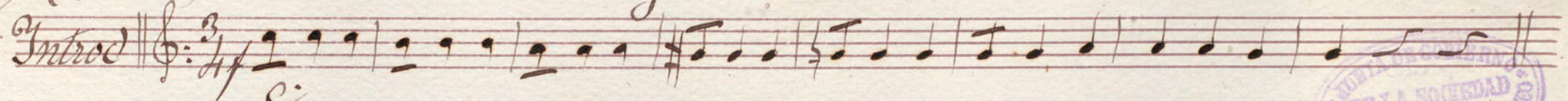
mf

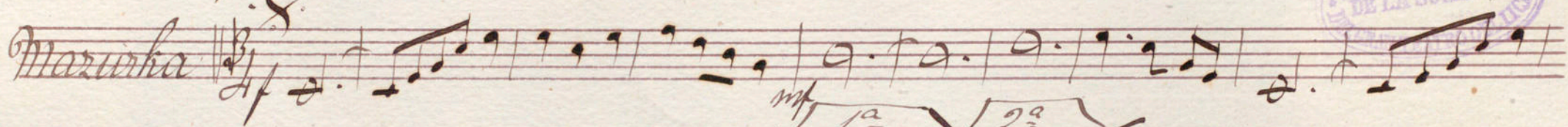
p D.C. al F.

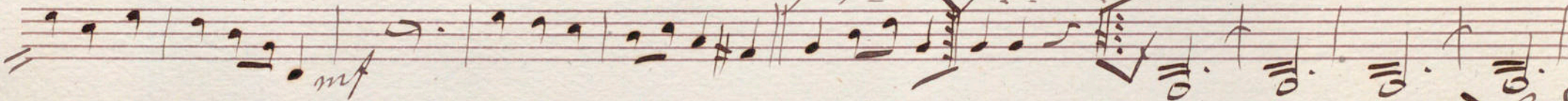
Coda $\frac{3}{4}$ *mf*

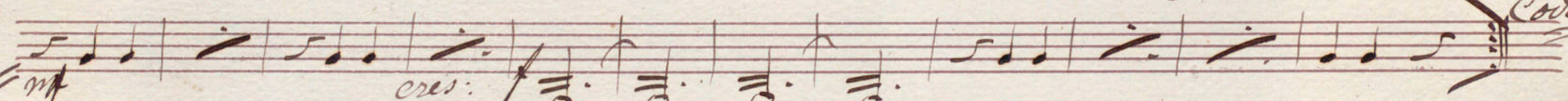


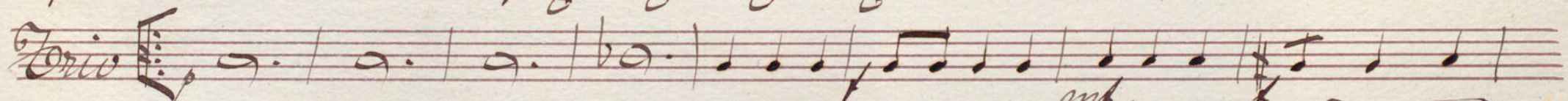
E. Doavan
(En Fa) *Mouv^t de Mazurka* // *L'élégance Parisienne* // *Mazurka* // *Corno 2^o*

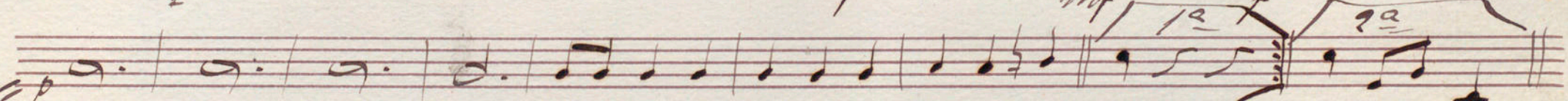
Introd 

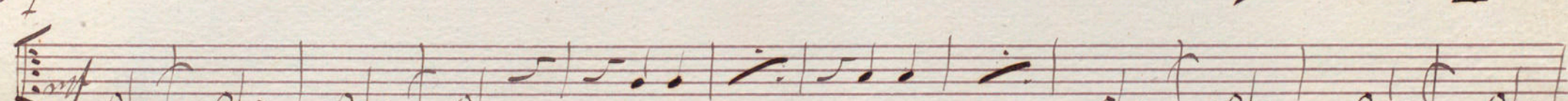
Mazurka 

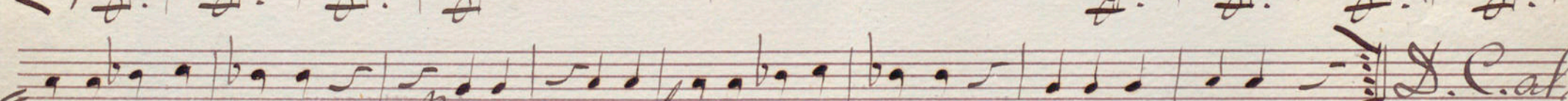




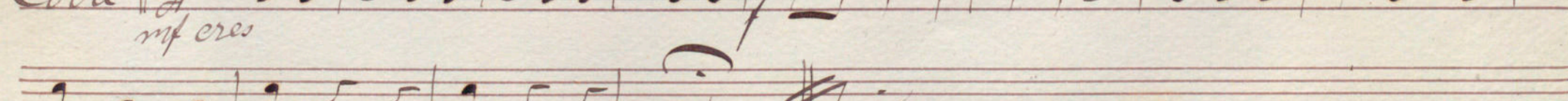
Trio 

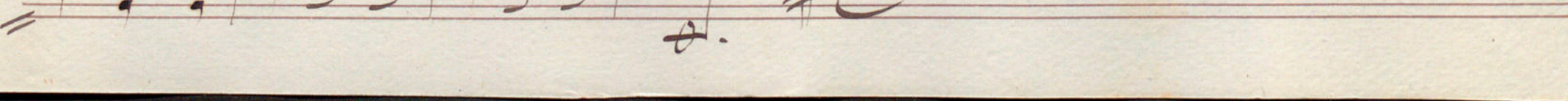


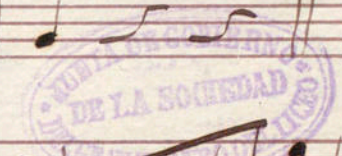






Coda 





Cornet in F



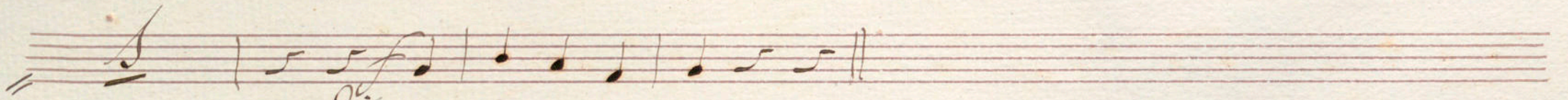
Elegance Parisienne

Mazurka

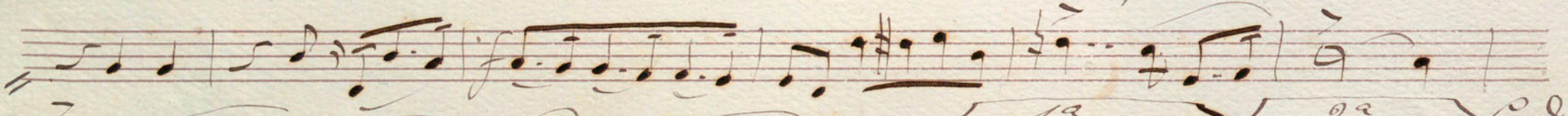
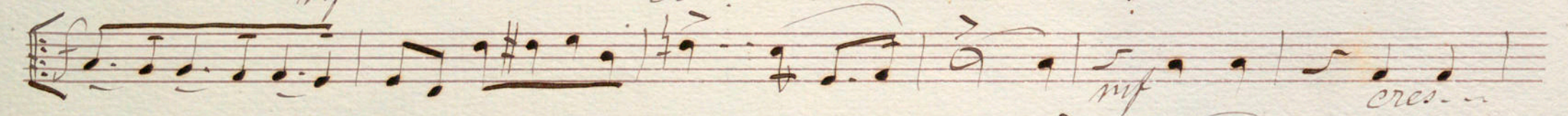
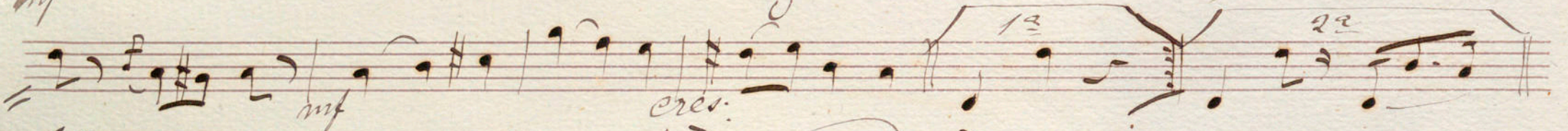
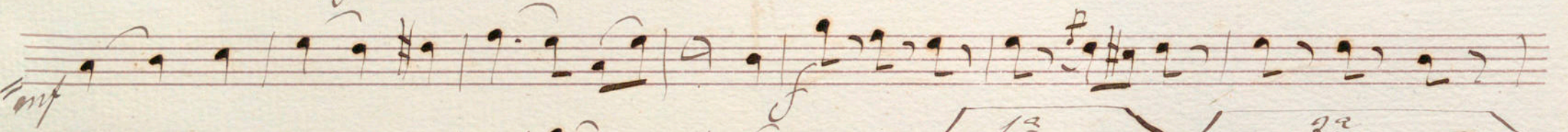
E. Tavan

(En Si b)

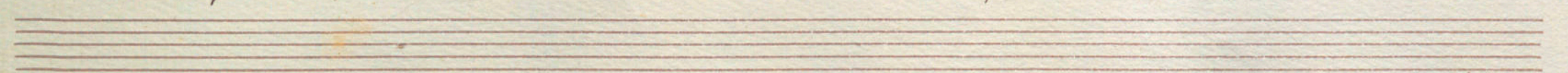
Introd. *Mour^t de Marurka* $\text{♩} \text{ } \frac{3}{4}$ *f*



Marurka $\text{♩} \text{ } \frac{3}{4}$ *f*



Coda $\text{♩} \text{ } \frac{3}{4}$ *f*



mf *f* *mf* *cres* *1a* *2a* *mf* *mf* *D.C. al S.*

Coda *mf* *cres*

Cornetin 2^o



// Elegance Parisienne //

Mazurka

// E. Tavan. //

(En Sib)

Introd / Mouvt de Mazurka || $\text{G} \cdot \text{#} \frac{3}{4}$ *f*

Musical notation on a single staff, featuring a treble clef, a key signature of one sharp (F#), and a 3/4 time signature. The music begins with a dynamic marking of *f* and includes various rhythmic values such as eighth and sixteenth notes.

Mazurka $\text{G} \cdot \text{#} \frac{3}{4}$ *f*

Musical notation on a single staff, continuing the piece with a dynamic marking of *f*.

Musical notation on a single staff, featuring a dynamic marking of *mf*.

Repete 3 vezes *mf* Coda *p*

Musical notation on a single staff, featuring dynamic markings of *mf* and *p*.

Musical notation on a single staff, featuring dynamic markings of *mf* and first/second endings labeled *1^a* and *2^a*.

Musical notation on a single staff, featuring dynamic markings of *p* and *mf*.

Two empty musical staves at the bottom of the page.

Handwritten musical score for three staves. The first staff contains a melodic line with notes and rests, marked with dynamics *p*, *mf*, and *f*. The second staff contains a rhythmic accompaniment with notes and rests, marked with *mf* and *f*. The third staff contains a bass line with notes and rests, ending with a double bar line and the text "D.C. al 8."

Handwritten musical score for two staves. The first staff is labeled "Coda" and contains a melodic line with notes and rests, marked with dynamics *mf* and *cres.*. The second staff contains a rhythmic accompaniment with notes and rests.

E. Noavan

L'élégance Parisienne // Mazurka // Trombon 1^o

Mouvt. de Mazurka



Introd. 3/4 *f*

Mazurka 3/4 *f*

Trio 3/4 *f*

Coda 3/4 *f*

D. C. al. f.

E. Kawan

Elegance Parisienne - Mazurka - Trombon 2^o

Mouv^t de Mazurka

Introd $\text{E} \flat \text{ 3/4}$

Mazurka $\text{E} \flat \text{ 3/4}$

Trio $\text{E} \flat \text{ 3/4}$

Coda $\text{E} \flat \text{ 3/4}$



Trombon 3^o



// Elegance Parisienne //

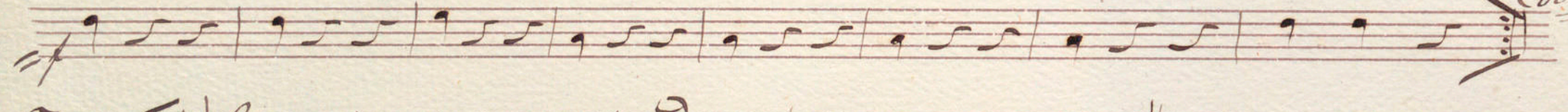
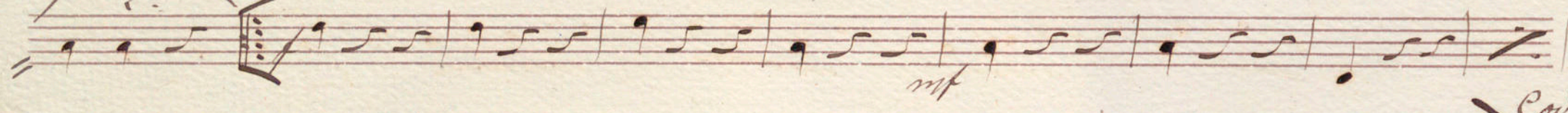
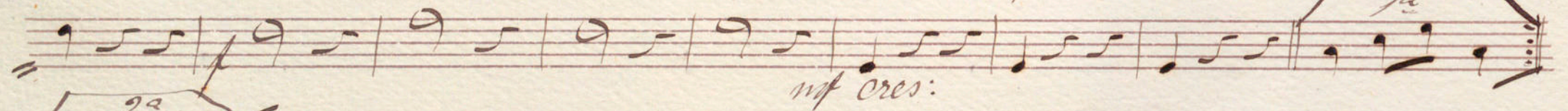
Mosurka

E. Tavan.

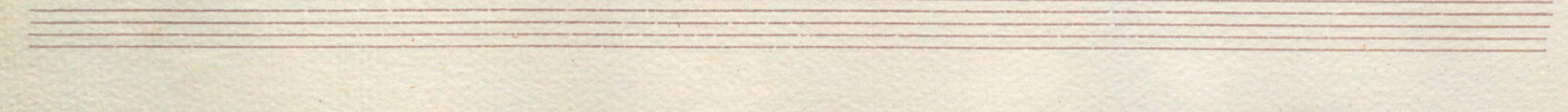
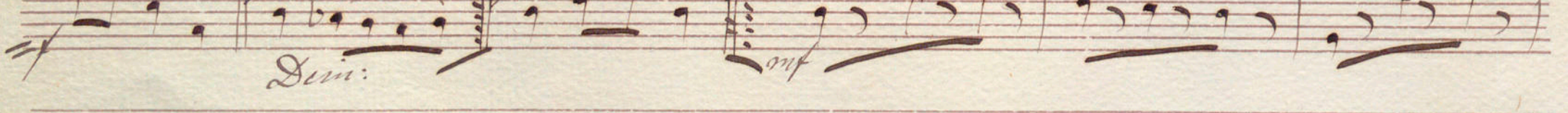
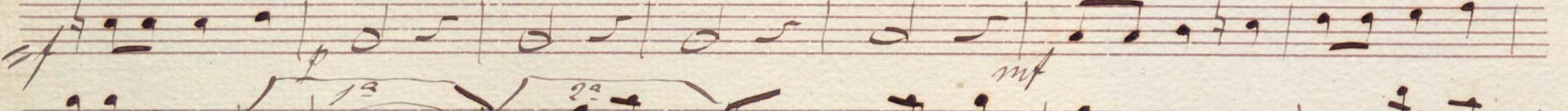
Introd. Mour. de Marurka



Marurka

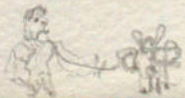


Trio



Handwritten musical score on three staves. The notation includes various note values, rests, and dynamic markings. The first staff begins with a treble clef and a key signature of one sharp (F#). The second staff contains a *mf* marking. The third staff concludes with the instruction *D. C. al F.*

Handwritten musical score on two staves. The first staff is marked *Coda* and begins with a treble clef, a 3/4 time signature, and dynamic markings *mf* and *cres*. The second staff ends with a double bar line and a sharp sign (#).



Tricorno.



Elegance Parisienne

Mouraska

E. Vagan.

Introd. Mouvent de Mazurka

Handwritten musical notation on a single staff, featuring a treble clef, a key signature of one flat (B-flat), and a 3/4 time signature. The notation includes quarter notes, eighth notes, and rests.

Mazurka

Handwritten musical notation on a single staff, continuing the Mazurka section. It includes dynamic markings such as *mf* and *esros:*.

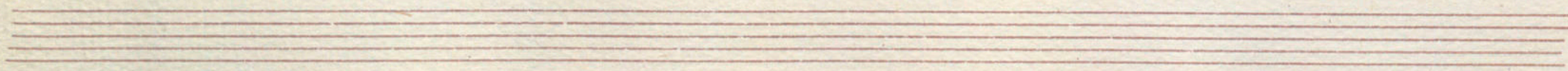
Handwritten musical notation on a single staff, featuring first and second endings marked with *1^a* and *2^a* above the notes.

Handwritten musical notation on a single staff, including dynamic markings *mf* and *esros*.

Loda Tonio

Handwritten musical notation on a single staff, starting a new section titled "Loda Tonio". It includes a treble clef, a key signature of one flat, and a 3/4 time signature, along with a *mf* dynamic marking.

Handwritten musical notation on a single staff, concluding the "Loda Tonio" section with a first ending marked *1^a* and a *dim* marking.



2^e
mf

mf

D. C. al. S.

Coda

mf cres.

Mouv^t de Mazurka L'élégance Parisienne = Mazurka = Bombo.

Introd 3/4 f

Mazurka 3/4 f

Ronco 3/4 f

Coda 3/4 f

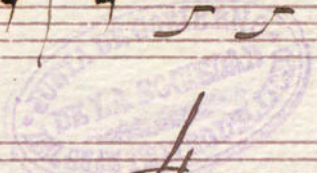
Mouv^t de Mazurka. L'élégance Parisienne = Mazurka = Caja.

Introc 3/4

Mazurka 3/4

Trio 3/4

Coda 3/4



Coda

D. Cal. S.