

Violin Principal

105

~~Labandea~~ Rosita  
por

por Modesto Ferrer



*f* *subito*

*Cori 8<sup>va</sup> -*

Handwritten musical score for Cori 8va. The top staff is in treble clef with a key signature of one flat and a 2/4 time signature. It features a series of sixteenth-note runs and chords. The bottom staff is in bass clef and contains a few notes, possibly a bass line or accompaniment.

*1<sup>a</sup> Violines*

*Clarinete*

*Violoncello*

*Violini solon*

*Flautas y Clarinet*

*Figura*

Handwritten musical score for Violines, Clarinete, Violoncello, Violini solon, and Flautas y Clarinet. The top staff is for the 1st Violins, showing a melodic line with some rests. The middle staff is for the Clarinet, featuring a complex rhythmic pattern. The bottom staff is for the Violoncello, with a steady bass line. The Violini solon and Flautas y Clarinet parts are indicated by notes and rests on the bottom staff.

*1<sup>a</sup>*

*2<sup>a</sup>*

*Mayor.*

Handwritten musical score for 1a, 2a, and Mayor. The top staff shows a melodic line with a key signature change to two flats. The bottom staff contains a series of notes, possibly a bass line or accompaniment. The section ends with a large, dense cross-hatched block.



La 1<sup>a</sup> vez la madera y la 2<sup>a</sup> el metal.

Handwritten musical notation for the first system, consisting of two staves. The notation includes various notes, rests, and accidentals, typical of a musical score.

Handwritten musical notation for the second system, consisting of two staves. The notation includes various notes, rests, and accidentals, typical of a musical score.

Handwritten musical notation for the third system, including instrument labels: *cornetas*, *clarinetas*, *cornetas*, *clarinetas*, and *bajos*. The notation includes various notes, rests, and accidentals, typical of a musical score.

*Fin*



*Andante* "Posita" *Andante*

8<sup>a</sup>  
Musical notation on a single staff with treble clef, key signature of one sharp (F#), and 2/4 time signature. The notation includes a series of notes with stems, some beamed together, and a *min* marking below the staff.

10<sup>a</sup>  
Musical notation on a single staff with treble clef. It features a series of notes with stems, some beamed together, and a *min* marking below the staff. There are also some markings above the staff, possibly indicating fingerings or dynamics.

*futti*  
Musical notation on a single staff with treble clef. It features a series of notes with stems, some beamed together, and a *futti* marking above the staff. There are also some markings above the staff, possibly indicating fingerings or dynamics.

Musical notation on two staves with treble clefs. The notation includes a series of notes with stems, some beamed together, and a *futti* marking above the first staff. There are also some markings above the staves, possibly indicating fingerings or dynamics.

Musical notation on a single staff with treble clef. It features a series of notes with stems, some beamed together, and a *futti* marking above the staff. There are also some markings above the staff, possibly indicating fingerings or dynamics.



in G, b

Clarinete Posita

1<sup>o</sup> Flöte

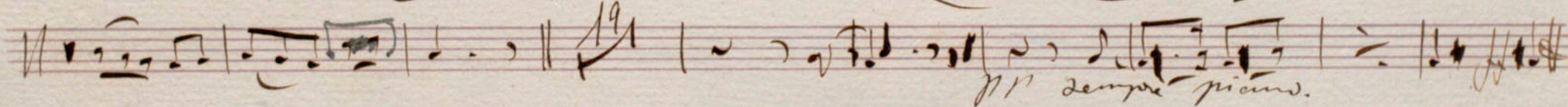
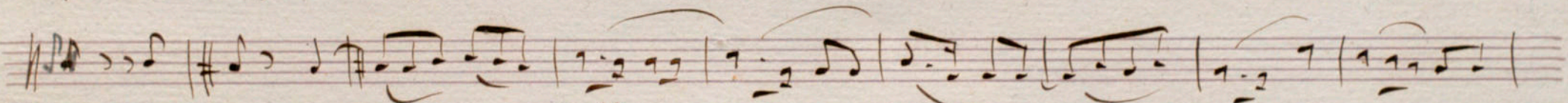
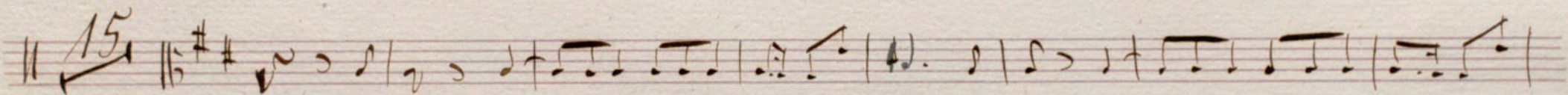
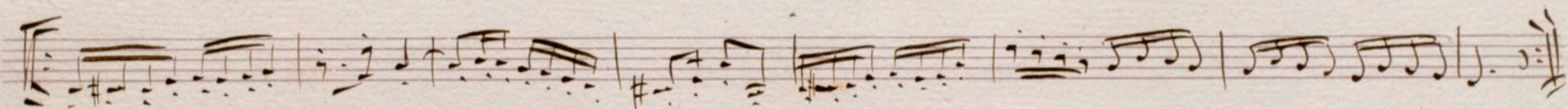
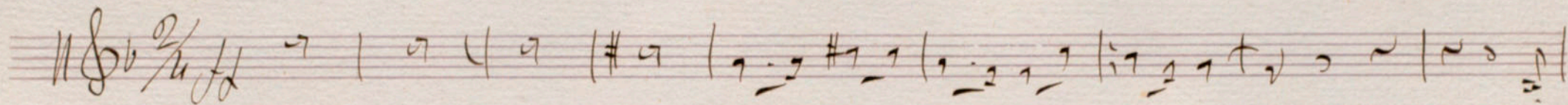
Handwritten musical score for Clarinet and Flute. The score is written on four systems of staves. The first system includes a treble clef, a 2/4 time signature, and a key signature of one flat (B-flat). The music features complex rhythmic patterns, including sixteenth and thirty-second notes, and various articulations such as slurs, accents, and dynamic markings like *scatto* and *mf*. A large slur spans across the second and third systems, with the number '19' written above it. The score concludes with a double bar line and a final key signature change to one sharp (F#).



Habanera Posita

2<sup>o</sup> Clarinetes

in G<sup>1</sup>



*mp sempre piccato.*



1<sup>a</sup> copia.

# Habandea Posita // Trompas.

in Mi b.

Handwritten musical notation on a single staff, beginning with a treble clef and a 2/4 time signature. The notation consists of a series of eighth and sixteenth notes, some beamed together, and rests.

Handwritten musical notation on a single staff, featuring a sequence of four sixteenth-note chords marked with numbers 1, 2, 3, and 4. This is followed by a melodic line with a slur over a group of notes, and a final cadence marked with a double bar line.

Handwritten musical notation on a single staff, showing a series of chords and melodic fragments. A large slur labeled '1<sup>a</sup>' spans across several measures of the piece.

Handwritten musical notation on a single staff, concluding with a double bar line. The word 'Tutti' is written below the final notes of the piece.



# Andante Posita Trompas.

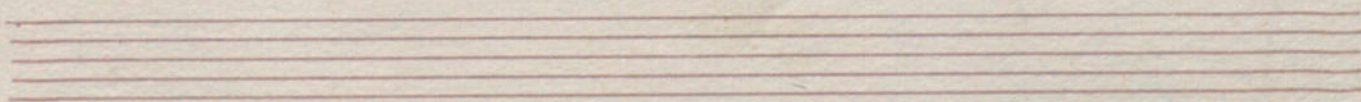
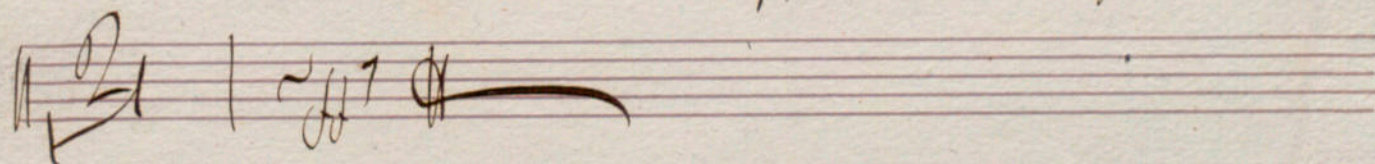
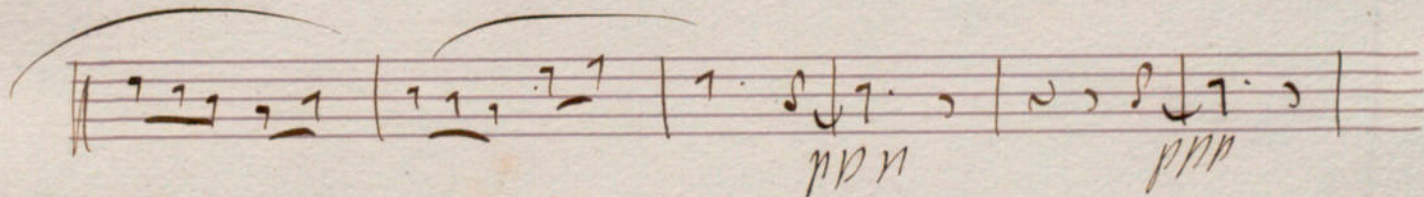
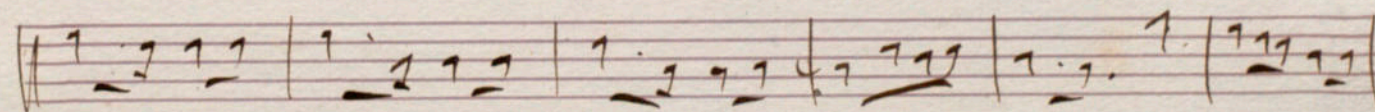
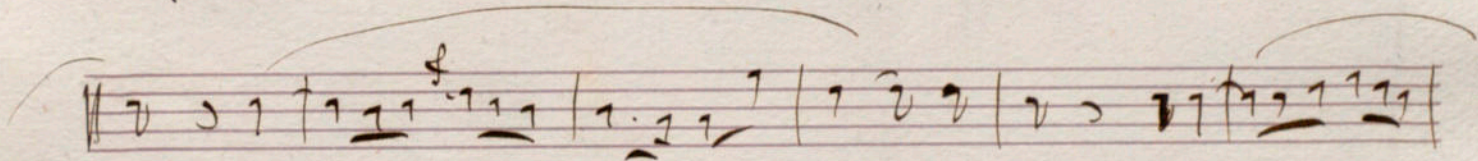
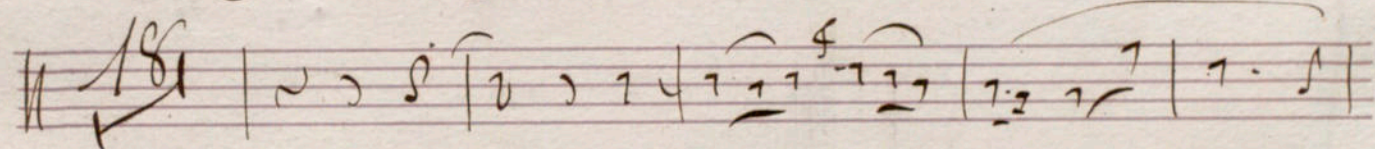
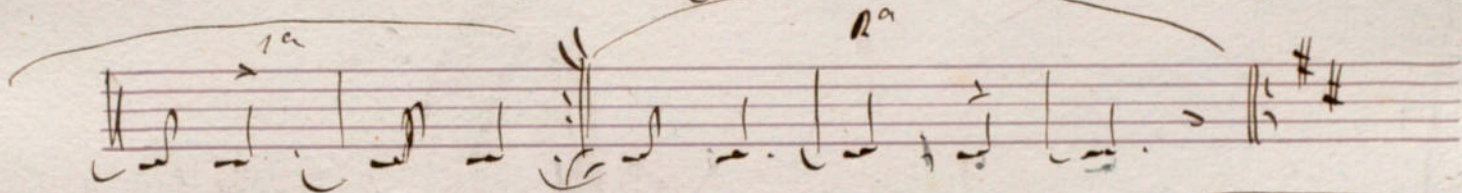
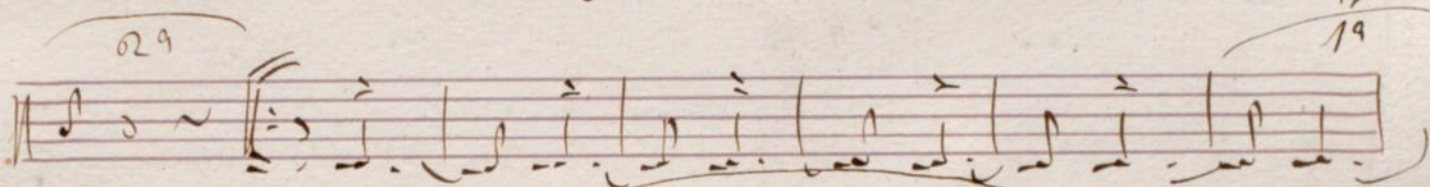
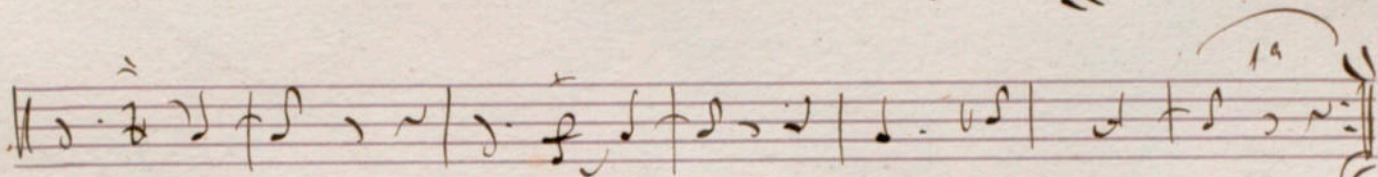
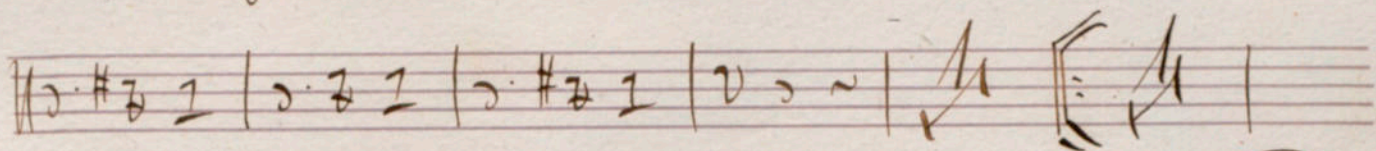
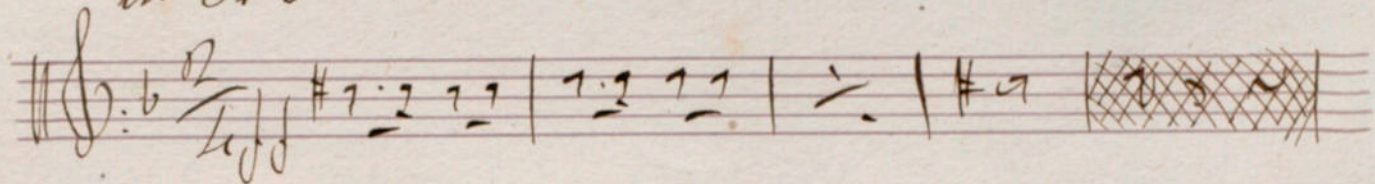
in Do.

la primera vez la 1<sup>a</sup> y la 2<sup>a</sup> la 2<sup>a</sup> vez



# Mabanera Rosita 1<sup>o</sup> Cornetas

in Si b

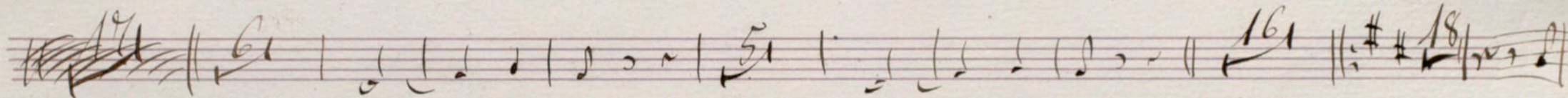
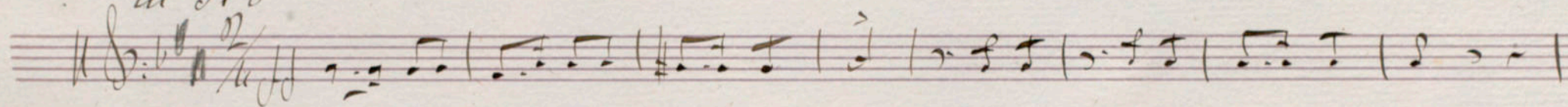




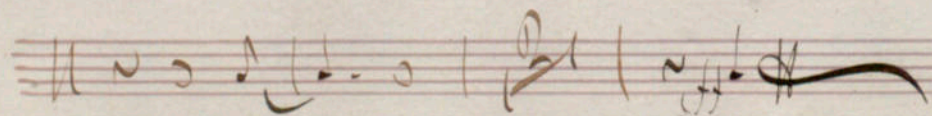
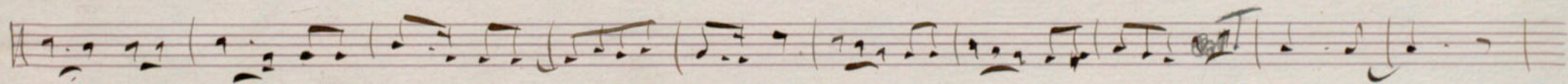
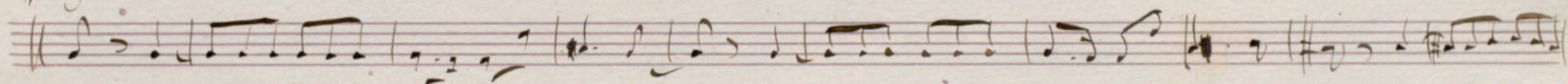
# Habandera Posita

1<sup>o</sup> Cornetini

in Si b

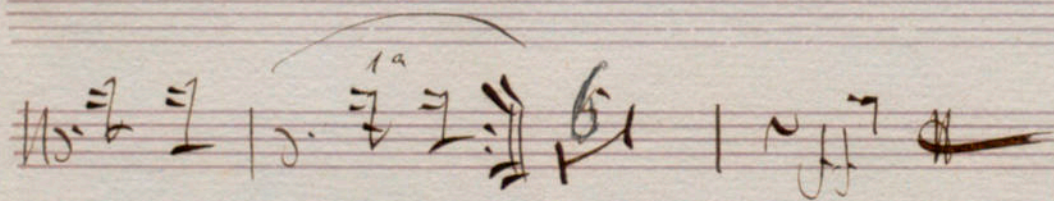
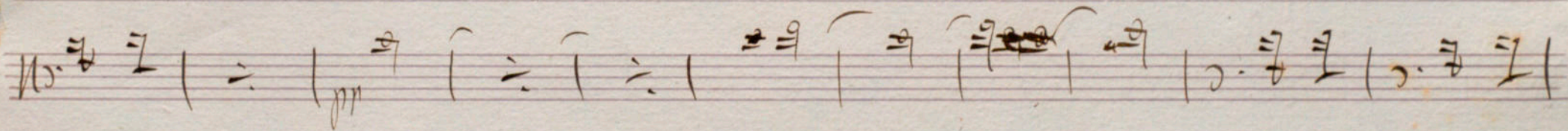
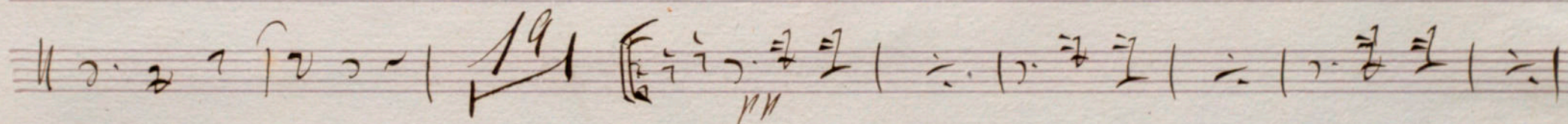
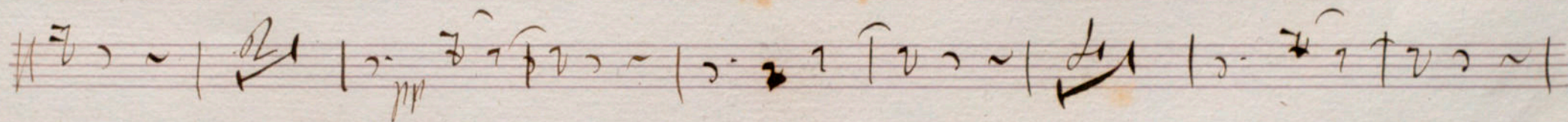
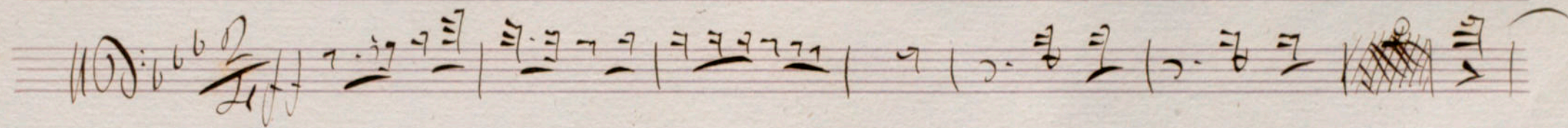


major.





Habanera Posita 1<sup>o</sup> Trombon





Mabanda Posita

N<sup>o</sup> Trombon

Handwritten musical notation on a single staff. It begins with a treble clef, a key signature of one flat (B-flat), and a 2/4 time signature. The notation includes various rhythmic values such as eighth and sixteenth notes, rests, and beams. A dynamic marking of *ff* (fortissimo) is present. There are some handwritten annotations above the notes, possibly indicating fingerings or articulation.

Handwritten musical notation on a single staff. It starts with a treble clef and a key signature of one flat. The notation features a series of notes with stems, some of which are marked with numbers 1 through 6, likely indicating fingerings. The piece concludes with a double bar line.

Handwritten musical notation on a single staff. It begins with a treble clef and a key signature of one flat. The notation consists of a sequence of notes with stems. A large slur covers the final two notes, which are marked with the number 14. Below the main staff, there is a smaller, less legible handwritten notation, possibly a correction or an alternative ending.



Quartier

~~168~~ Habanera Rosita

3<sup>o</sup> Trombon

Handwritten musical notation on a single staff. It begins with a treble clef, a key signature of two flats (B-flat and E-flat), and a 2/4 time signature. The tempo marking "Allegro" is written below the staff. The notation includes various rhythmic values such as eighth and sixteenth notes, rests, and beams.

Handwritten musical notation on a single staff. It starts with a treble clef and a key signature of two flats. The first two measures are marked with "17" and "16" above them. The notation continues with rhythmic patterns and rests.

Handwritten musical notation on a single staff. It features a treble clef and a key signature of two flats. The notation consists of a series of rhythmic patterns, including eighth and sixteenth notes, and rests. A measure near the end is marked with "14" above it.

Handwritten musical notation on a single staff. It begins with a treble clef and a key signature of two flats. The notation is sparse, showing a few notes and a large, sweeping flourish.



Mabanera "Rosita" Bajos de metal *Fincorno?*

*tutti.* *1 solo.*

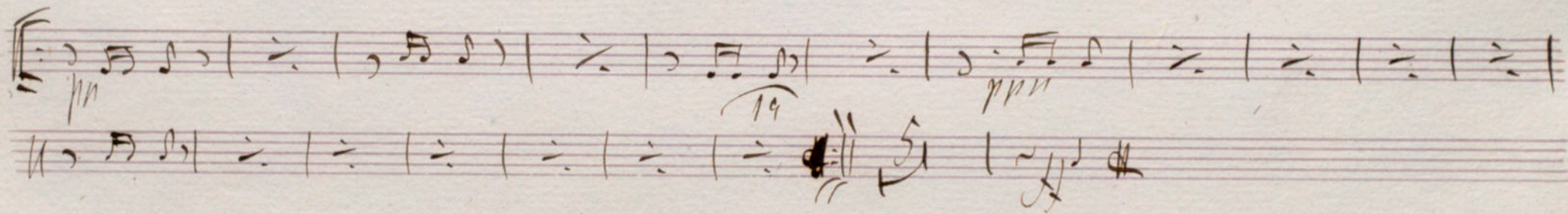
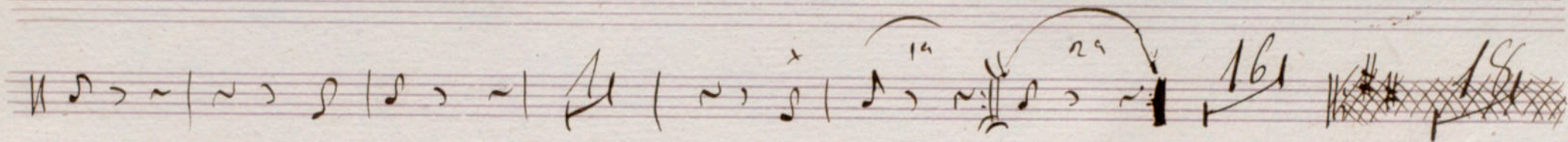
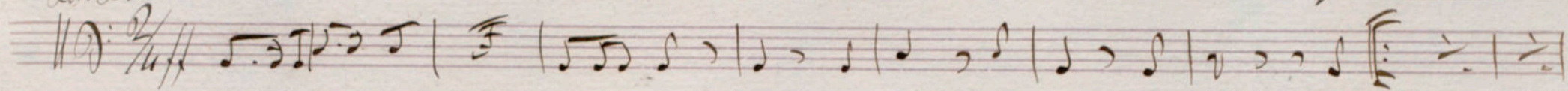
*124* *16* *2da solo. segunda vez el 1º*

*tutti.*



Stabat Mater, Tromboni.

Lab. Do





# Habandera Posita Basso

118.  $6^{\flat} 6^{\flat} \frac{2}{4}$

9 | 9 | 9 | 9 | 2 | 2

117

19

2 | 2 | 2 | 2 | 9 | 9

2 | 2



Estudillos

~~sendra~~

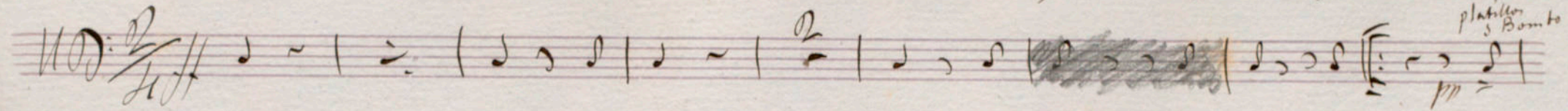
Riera alta.

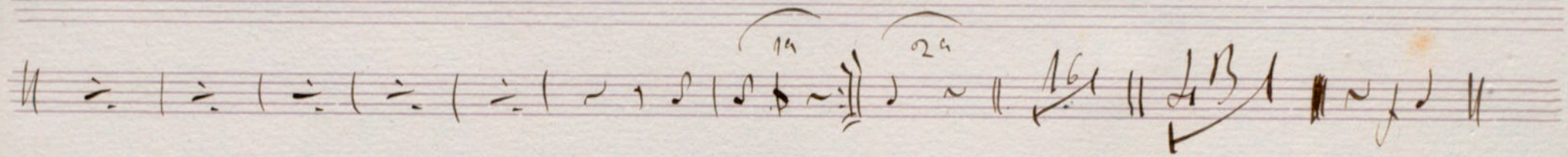
Deraa

26 p



# Adagio, Ritornello Basso

1100:  $\frac{2}{4}$  *Adagio*  *plattler*  
*Basso*





*Wabarra Posita* Violin I<sup>o</sup>

*divisi*

*2<sup>a</sup>*

*2<sup>a</sup>*

*2<sup>a</sup>*

*1<sup>a</sup>*

*2<sup>a</sup>*

*Sempore piccolo*



*Habanera Posita Violin 2<sup>o</sup>*



Habanera Rosita

Violin No. 1 Viola

The image shows a handwritten musical score on aged paper. At the top, the title "Habanera Rosita" is written in cursive, followed by the instrument parts "Violin No. 1" and "Viola". The score consists of two staves, one for the Violin and one for the Viola. The music is written in a single system with a treble clef and a 2/4 time signature. The notation includes various rhythmic values, accidentals, and phrasing slurs. There are two first endings marked with "1a" and "2a" in the violin part, and two second endings marked with "1a" and "2a" in the viola part. The paper shows signs of age, including some staining and discoloration.



# Adagio - Basso - Bass

*Adagio*  $\frac{2}{4}$

*B<sup>a</sup>*