

No. 8. Banda
Epiloge.

Ammonen. 8. (mit)

Artus

Wines.

Scena unica

And^{te} quasi Alleg^{ro} || $\text{F} \sharp \sharp \sharp \sharp \text{e}$ 20 | 29

Acto 3^o

Cuadro 2^o

Intermedio

And^{te} casi Alleg^{ro}

A. Larralde

7. 26. 8. Banda.
Epilogo

Annover 2.^o (mit)

Artus.

inter
Vires.

Scena unica

And^{te} quasi Alleg^{ro}

♩: # # # # e 25

27

Acto 3^o

Cuadro 2^o

Intermedio

And^{te} casi Alleg^{ro}

Handwritten musical score for Intermedio, Acto 3, Cuadro 2. The score is written on five staves. The first staff is a treble clef with a key signature of one sharp (F#) and a 2/4 time signature. The tempo is marked 'Andante casi Allegro'. The music consists of several measures of notes and rests. The second staff is a bass clef with a key signature of one sharp (F#) and a 2/4 time signature. The third staff is a bass clef with a key signature of one sharp (F#) and a 2/4 time signature. The fourth staff is a bass clef with a key signature of one sharp (F#) and a 2/4 time signature. The fifth staff is a bass clef with a key signature of one sharp (F#) and a 2/4 time signature. The score ends with a double bar line and a fermata.

A. Larralde



No. 2.
Epilogo


Banda


Cornetin No. 1.

Artis.

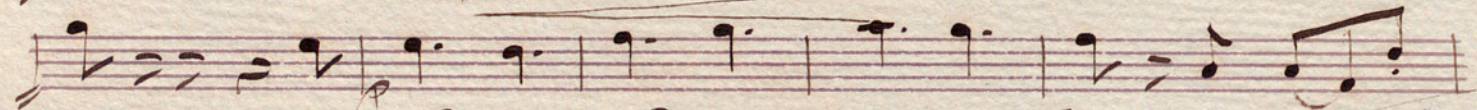
Intro
Vices.

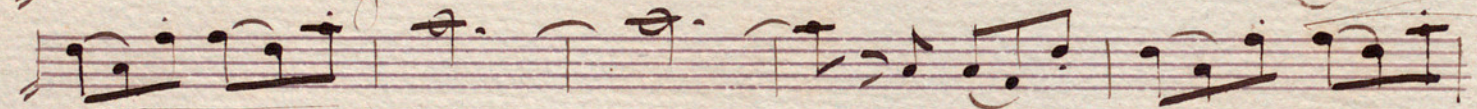
Scena unica (en La)

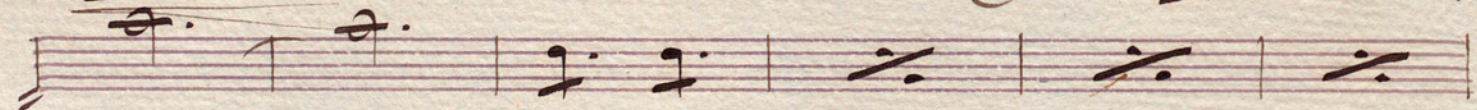
And^{te} enasi Alleg^{to} ||  ||

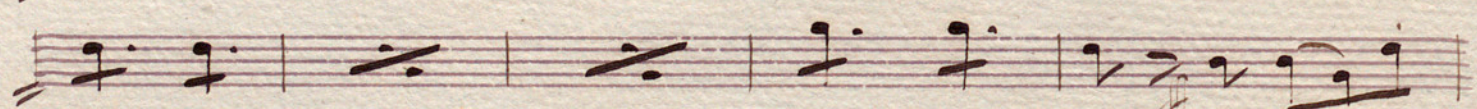
All^o ||  ||

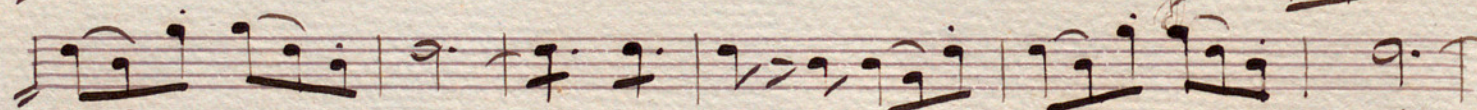


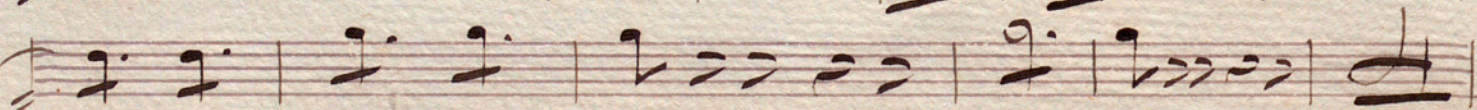



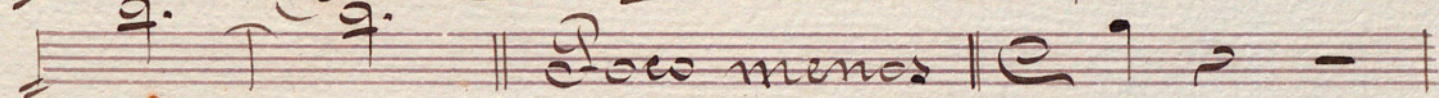


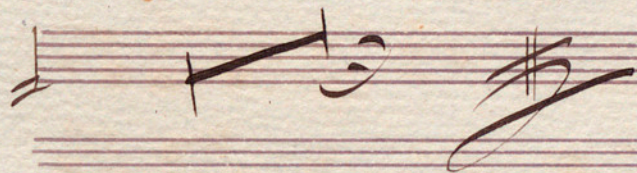


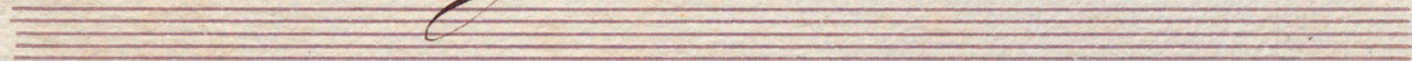


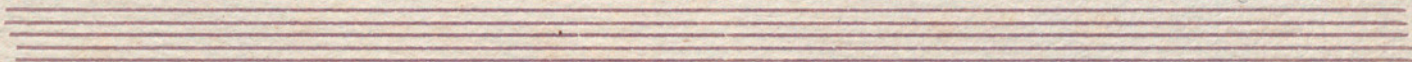


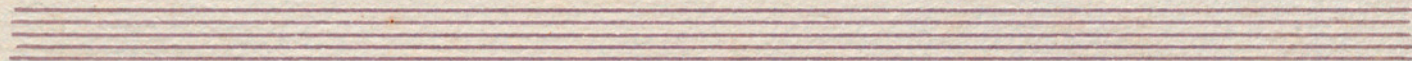


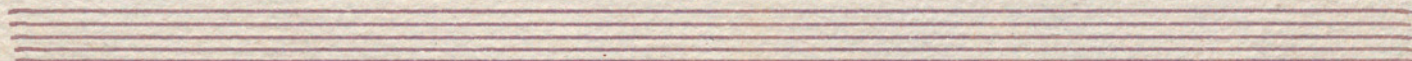
rit.  *Poco meno* 

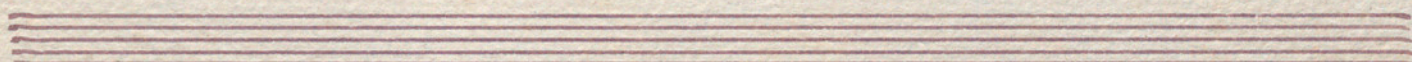


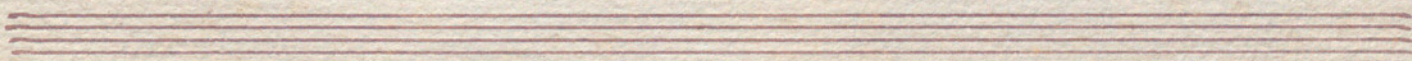


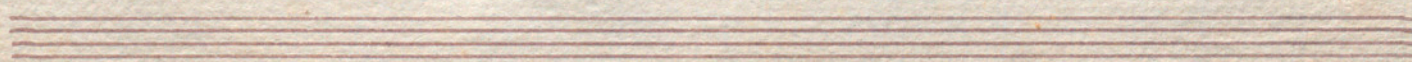














Acto 2^o

Cuadro 2^o

Intermedio (En La)

And^{te} casi Alleg^{ro}

Handwritten musical score for an interlude. It features a treble clef, a key signature of two flats (B-flat and E-flat), and a 2/4 time signature. The tempo is marked "Andante casi Allegro". The score consists of four staves of music. The first staff contains a melodic line with eighth and sixteenth notes. The second and third staves contain rhythmic accompaniment with quarter and eighth notes. The fourth staff continues the melodic line. The piece concludes with a double bar line and a sharp sign indicating the end of the section.

A. Larralde

No. 1. Banda.

Epilogo.

Cornetin 2. ^{no}

Artus

Wines.

Scena unica (En La)

And^{te} quasi Alleg^{ro}

Handwritten musical score for a scene. The score consists of ten staves. The first staff contains the tempo and performance instructions "And^{te} quasi Alleg^{ro}" followed by a treble clef, a key signature of one sharp (F#), and a 6/8 time signature. The second staff begins with a double bar line and a repeat sign, followed by a treble clef and a 6/8 time signature. The subsequent staves contain handwritten musical notation, including various note values, rests, and bar lines. The notation is written in dark ink on aged, slightly yellowed paper. The final staff ends with a double bar line and a repeat sign.

Handwritten musical notation on a five-line staff. The notation includes several measures of music with notes and rests. The first measure contains a quarter note with a fermata, followed by two eighth notes. The second measure contains a quarter note with a fermata, followed by two eighth notes. The third measure contains a quarter note with a fermata, followed by two eighth notes. The fourth measure contains a quarter note with a fermata. The fifth measure contains a quarter note with a fermata, followed by two eighth notes. The sixth measure contains a quarter note with a fermata, followed by two eighth notes. The text "Poco meno" is written across the staff, followed by a double bar line and a quarter note with a fermata.

Handwritten musical notation on a five-line staff. The notation includes a single note with a fermata, followed by a large scribble.

Blank musical staff.

Blank musical staff.

Blank musical staff.

Blank musical staff.

Blank musical staff.

Blank musical staff.

Blank musical staff.

Blank musical staff.

Acto 2^o

Cuadro 2^o

Intermedio (En La)

And^{te} casi Alleg^{ro} $\text{♩} = 120$

A. Larnalde

No. 8. Banda.

Epilogo.

Tramhan 8.

Artus

metes
Vires.

Scena unica

And^{te} quasi Alleg^{ro}

Handwritten musical score for a scene, featuring five staves. The notation includes notes, rests, and dynamic markings. The first staff has a tempo marking 'And^{te} quasi Alleg^{ro}' and a key signature of one sharp (F#). The second staff has a '110' marking. The third staff has a '2.5' marking. The fourth staff has a '2.5' marking. The fifth staff has a '100' marking. The score is written in a cursive style.

77

Handwritten musical score consisting of ten staves. The first nine staves contain musical notation with various notes, rests, and dynamic markings. The tenth staff begins with the instruction "Poco meno" in cursive, followed by a double bar line, a treble clef, a key signature of one sharp (F#), and a single note. The notation includes various note values, rests, and dynamic markings such as *mf*, *f*, and *ff*. The paper shows signs of age and wear.

Three empty musical staves, each consisting of five horizontal lines, located at the bottom of the page.

Acto 2^{no}

Cuadro 2^o

Intermedio (Interior)

Andante casi Alleg^{ro} # 2/4

Handwritten musical score for Acto 2, Cuadro 2, Intermedio (Interior). The score consists of four staves. The first staff is the vocal line, starting with a treble clef and a key signature of one sharp (F#). The tempo is 'Andante casi Allegro' and the time signature is 2/4. The second staff is the piano accompaniment, starting with a bass clef and a key signature of one sharp. The third and fourth staves continue the piano accompaniment. The score ends with a double bar line and a sharp sign.

A. Lomalde

Nº 8. Banda.

Epilogo.

Tramhan 2. ^{no}

Artis.

retro
Lines.

Scena inica

And^{te} quasi Alleg^{to} || 9: || 2. 2. | 2. 7.

Handwritten musical score for a scene in C major, 2/2 time. The score consists of six staves. The first two staves contain rhythmic patterns with slanted lines. The third staff begins with a treble clef, a key signature of one sharp (F#), and a 3/6 time signature. The fourth staff contains a tempo change to 'All.' and a key signature change to two sharps (D major). The fifth and sixth staves contain melodic lines with various note values and rests. The piece concludes with a double bar line and a repeat sign.

V.P.

Handwritten musical score on seven staves. The notation includes various rhythmic values such as eighth, sixteenth, and quarter notes, as well as rests and slurs. The first six staves contain the main body of the piece, while the seventh staff begins with the instruction "Poco meno" and ends with a double bar line and a sharp sign. The paper shows signs of age, including some staining and a large ink smudge on the right side.

Poco meno

Handwritten signature or initials in the bottom right corner of the page.

Acto 3^o

Cuadro 2^o

Intermedio (Interior)

And^{te} casi Alleg^{ro} # 2/4

Handwritten musical score for Acto 3, Cuadro 2, Intermedio (Interior). The score consists of four staves. The first staff is a treble clef with a key signature of one sharp (F#) and a 2/4 time signature. The tempo is marked 'Andante casi Allegro'. The music features a melody in the treble clef and a bass line in the bass clef. The second staff continues the melody. The third staff continues the melody and includes a 'pp.' (pianissimo) marking. The fourth staff continues the bass line and ends with a double bar line and a repeat sign.

A. Larralde

Epilogo.

Nº 8.

Banda

Tuba.

Artus

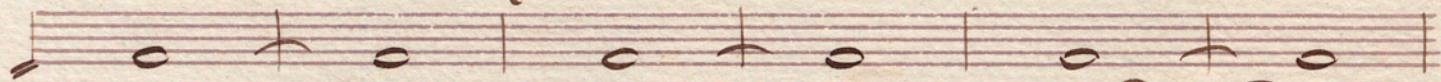
inter
Vires.

Scena unica

And^{te} quasi Alleg^{ro}

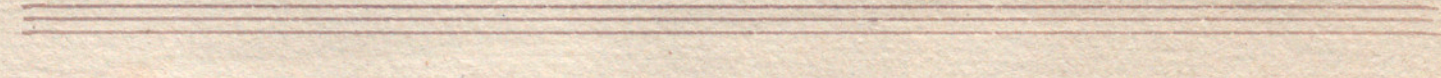
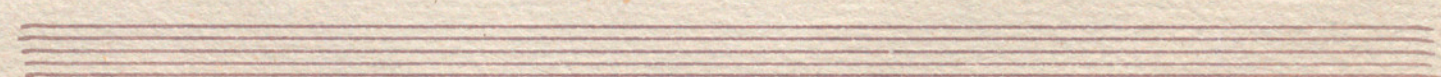
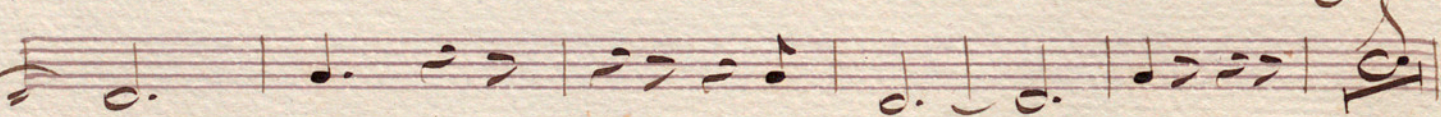
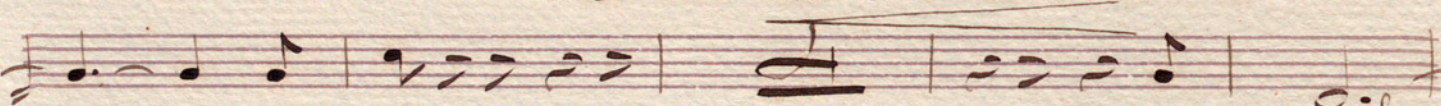
22

27



Alligro

2



Handwritten musical notation on six staves. The first three staves contain melodic lines with various note values and slurs. The fourth staff contains rhythmic notation with vertical strokes and beams, possibly representing a bass line or a specific rhythmic pattern. The fifth staff contains rhythmic notation and the text "Foco menos" followed by a double bar line and a few notes. The sixth staff contains a treble clef, a sharp sign, and the name "A. Larralde" with a decorative flourish below it.

Foco menos ||

A. Larralde