

97: d.

Trompa 3^a

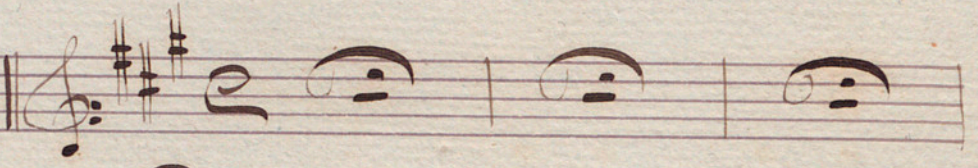
Artis.

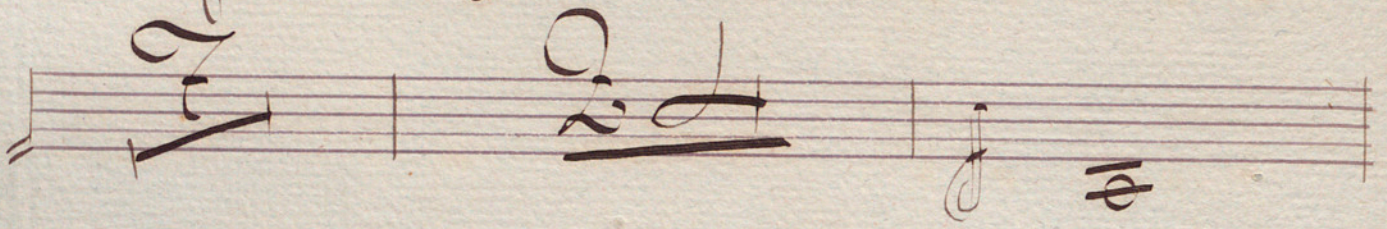
Opera entres actos y un epilogo

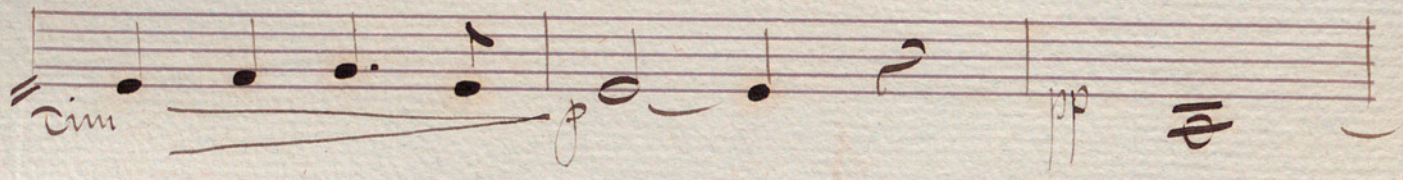
entre

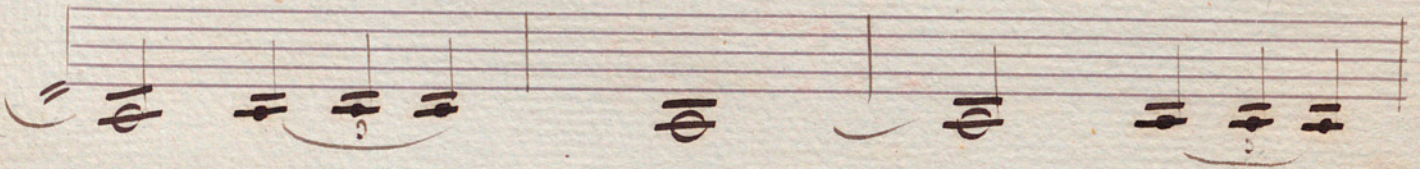
Actes.

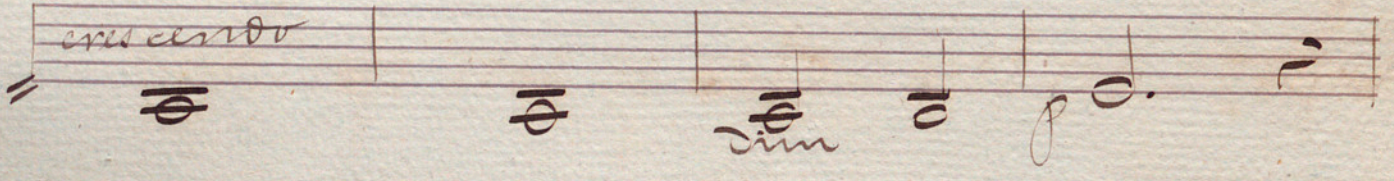
Overture (En mi b)

Parquette || 

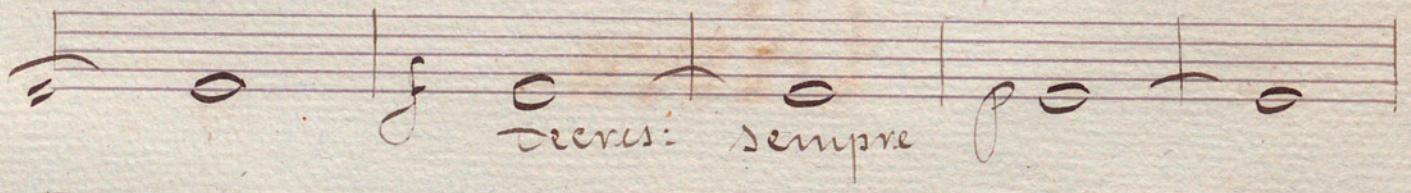


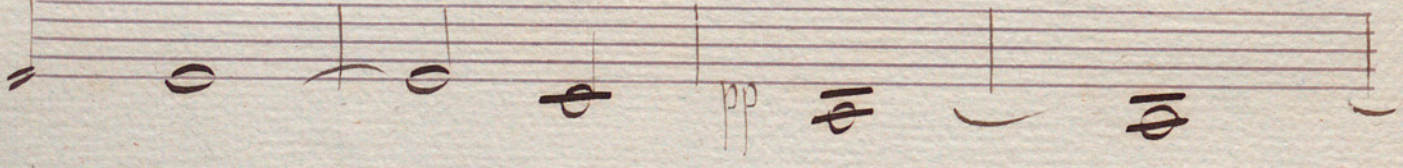
dim 

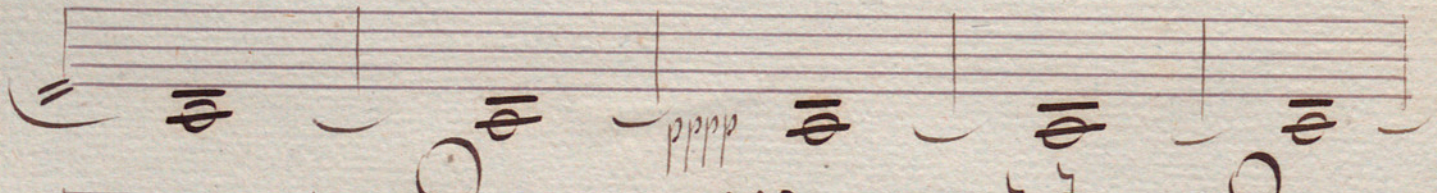


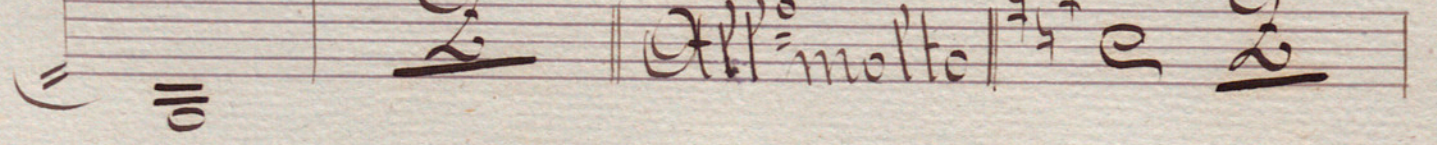
crescendo 

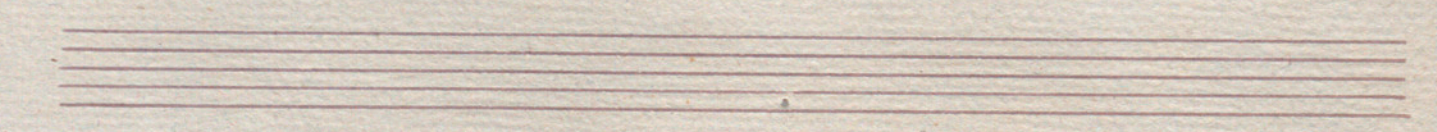


decres: sempre 





pppp 

All^o molto 

Handwritten musical score on ten staves. The notation includes treble clefs, various note values (quarter, eighth, sixteenth notes), rests, and slurs. Dynamic markings include "ppp" and "pp". A section is marked with a large "A". Performance instructions include "crescendo sempre" and "rit.". The score concludes with a double bar line and a fermata.

Handwritten signature or initials

Handwritten musical score on aged paper, featuring ten staves. The notation includes vocal lines with lyrics and instrumental accompaniment. The lyrics are: *eres - cess*, *do - sempre*, and *eres - cess do*. Dynamics include *ppp*, *p*, and *pp*. The score is written in a historical style with various note values and rests.

Handwritten musical notation on a five-line staff, featuring a treble clef and several whole notes with sharp signs.

Handwritten musical notation on a five-line staff, featuring a treble clef and various note values including quarter notes and eighth notes.

Handwritten musical notation on a five-line staff, featuring a treble clef and a large 'F' dynamic marking.

Handwritten musical notation on a five-line staff, featuring a treble clef and a large 'H' dynamic marking.

Handwritten musical notation on a five-line staff, featuring a treble clef and the instruction "sempre fff".

Handwritten musical notation on a five-line staff, featuring a treble clef and a double bar line.

Handwritten musical notation on a five-line staff, featuring a treble clef and a series of whole notes.

Handwritten musical notation on a five-line staff, featuring a treble clef and a large 'G' dynamic marking.

Handwritten musical notation on a five-line staff, featuring a treble clef and various note values.

Handwritten musical notation on a five-line staff, featuring a treble clef and the instruction "crescendo".

Four empty musical staves at the bottom of the page.

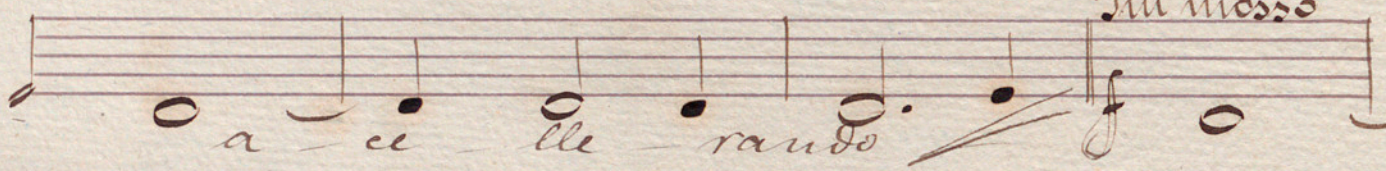
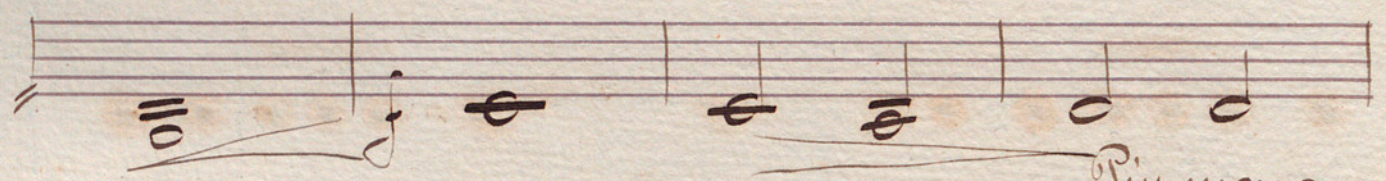
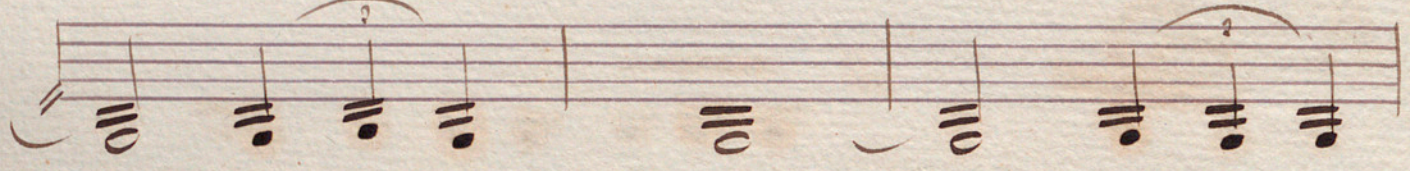
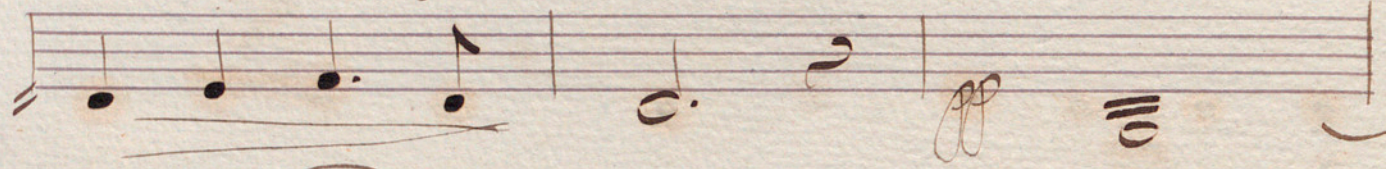
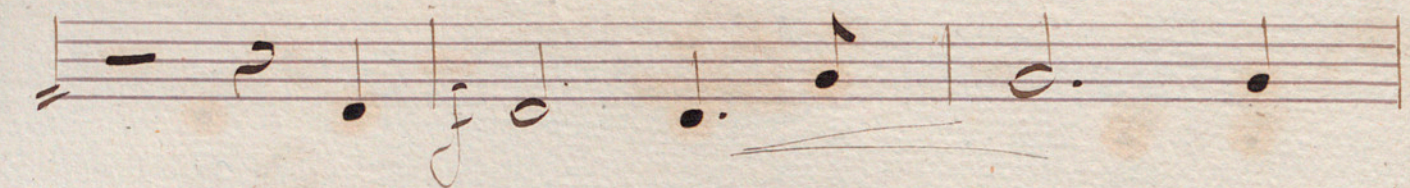
Escena 1^a (En Fa)

And^{te} quasi Alleg^{ro}

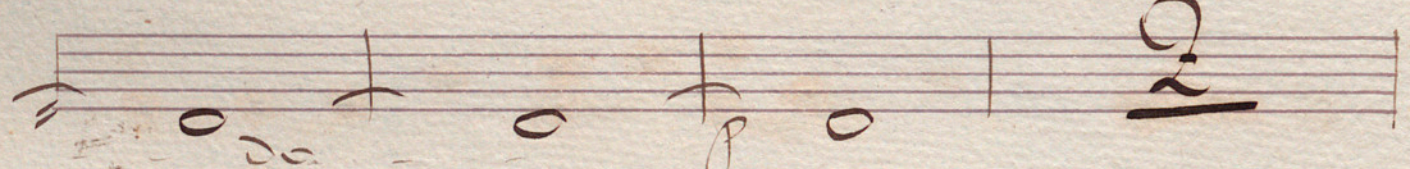
piano al comenzar; continuar en crescendo hasta
la repetición que debe ser *fff.*

1ª 2ª

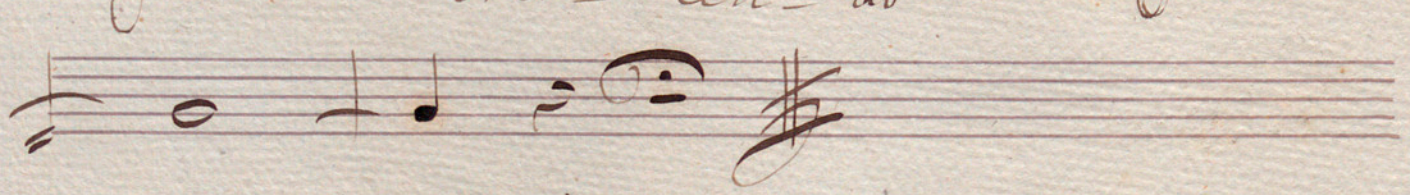
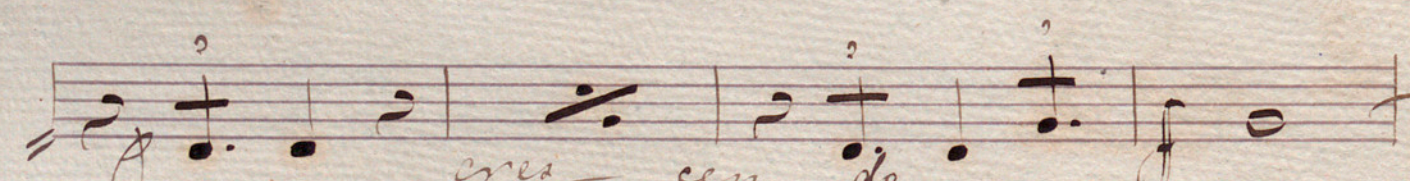
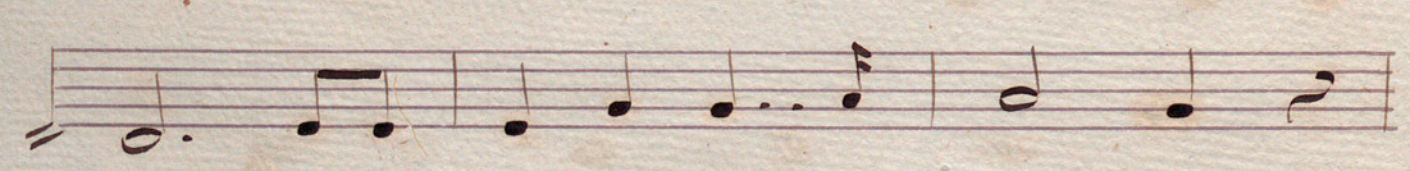
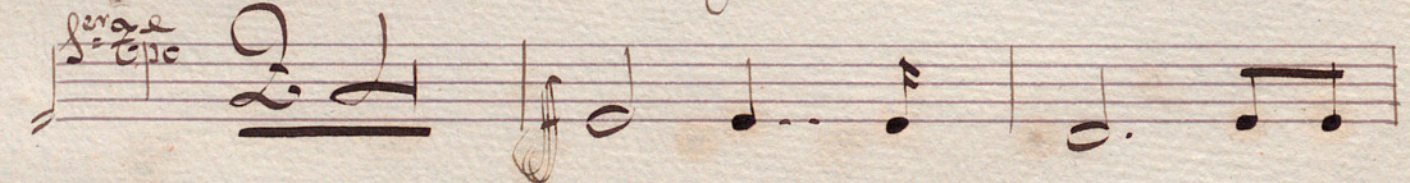
Handwritten musical score on ten staves. The notation includes various note values, rests, and dynamic markings. A large 'A' is written on the third staff, and a signature is at the bottom right.



Piu mosso



Serge
Epico



Scena 2^a

Alleg^{ro} 4/4 5 5 *poco rall*

ser^{vo} ep^o

A

poco rall

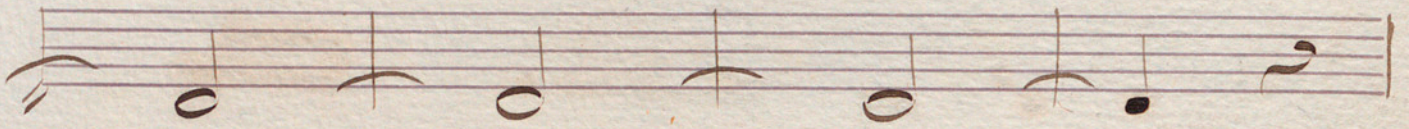
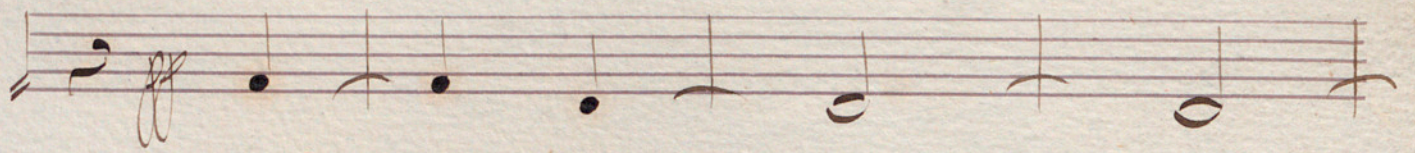
ri - tar -

can - da

All^o mod^o 4/4 b b *pp sempre*

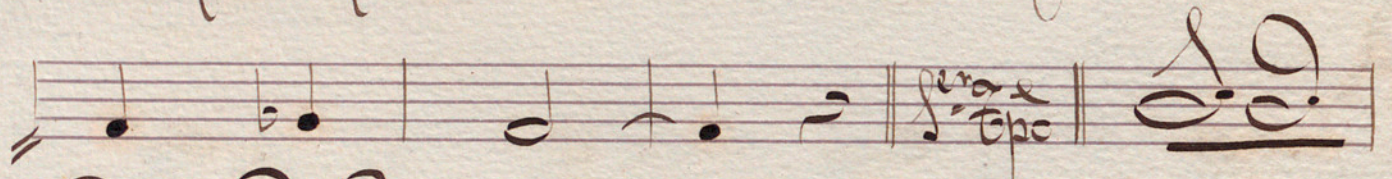
pp

J. S.

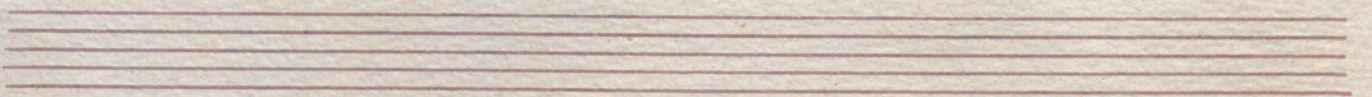
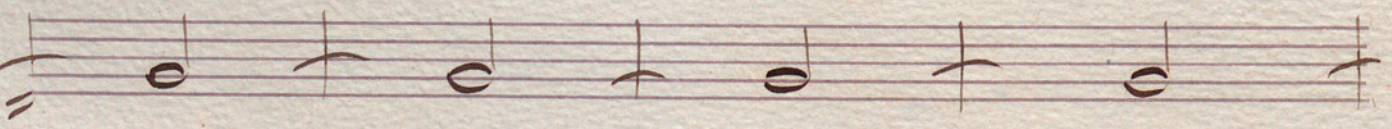
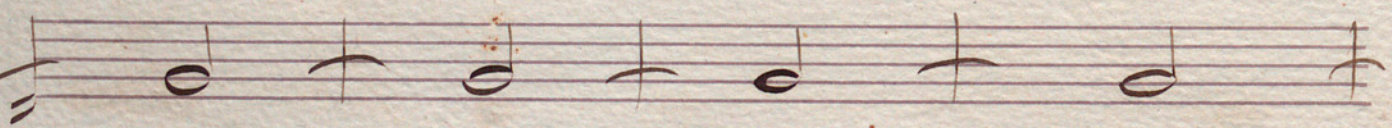
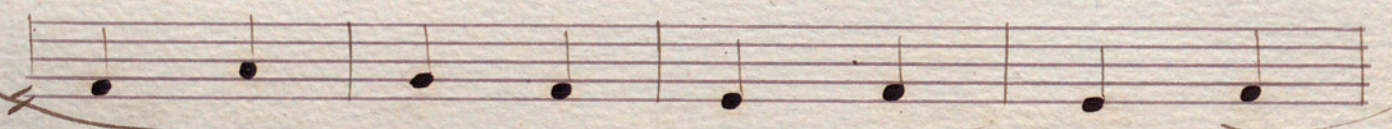
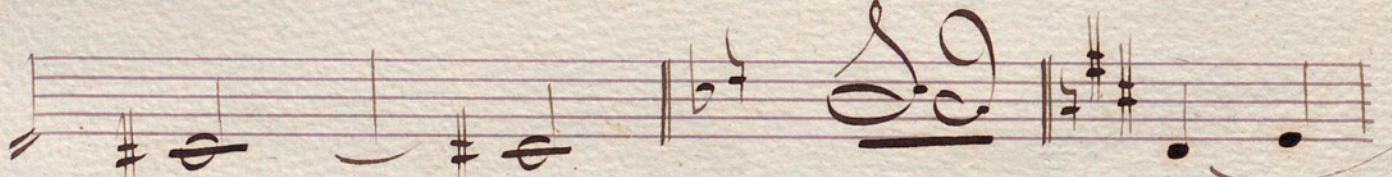
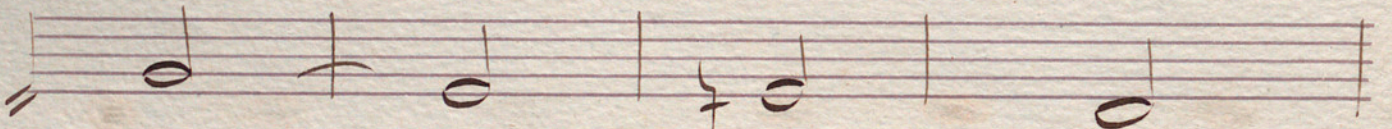
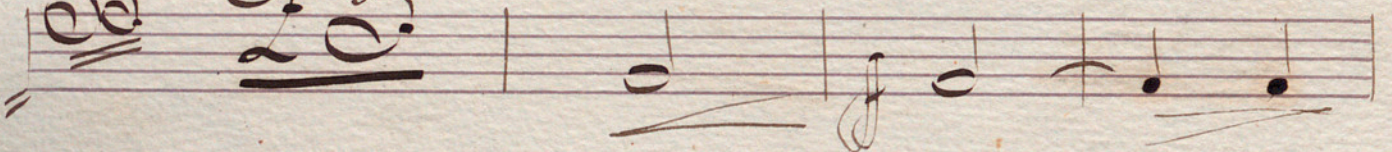


Alleg^{ro} agitato

22



23



Handwritten musical notation on five staves. The first four staves contain rhythmic patterns with notes and rests. The fifth staff features a complex, overlapping notation with vertical lines and curved strokes.


All.^o |

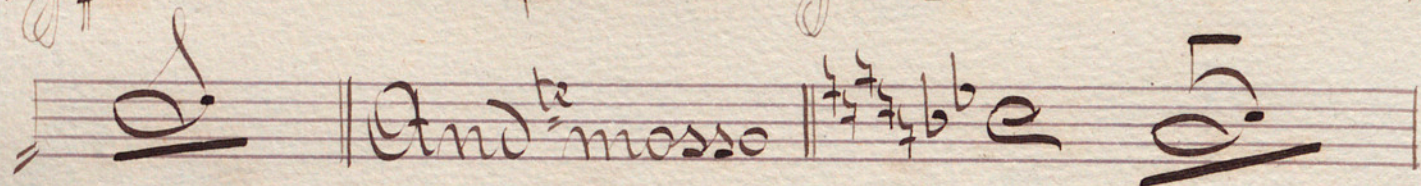
dim

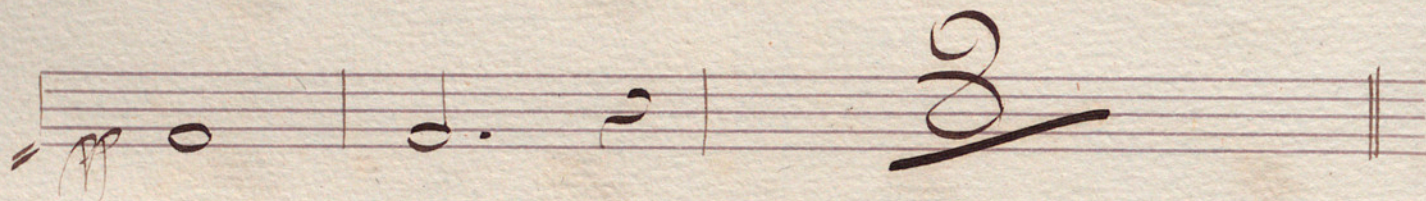
Andante |

Mood ^{Ho} |

Quasi Allegro | E 

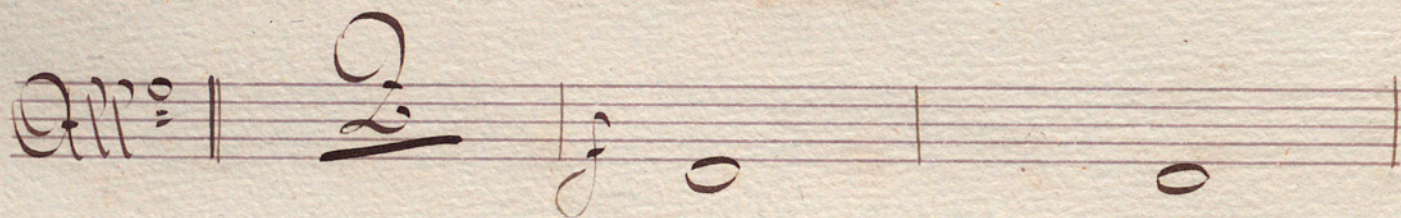


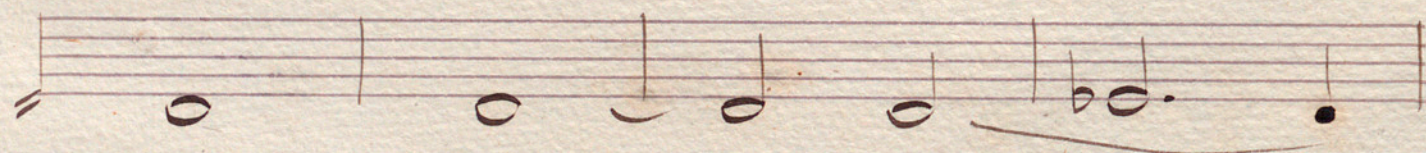


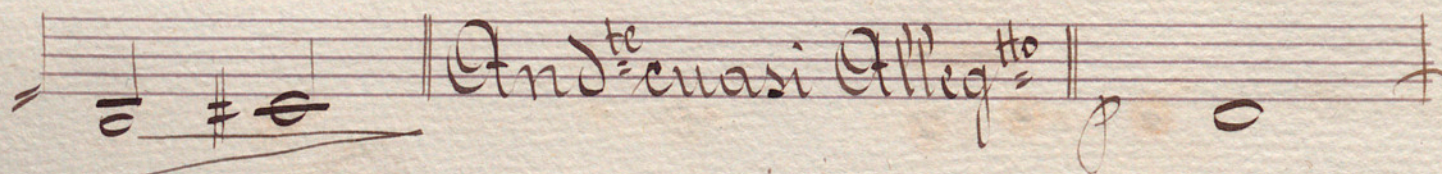


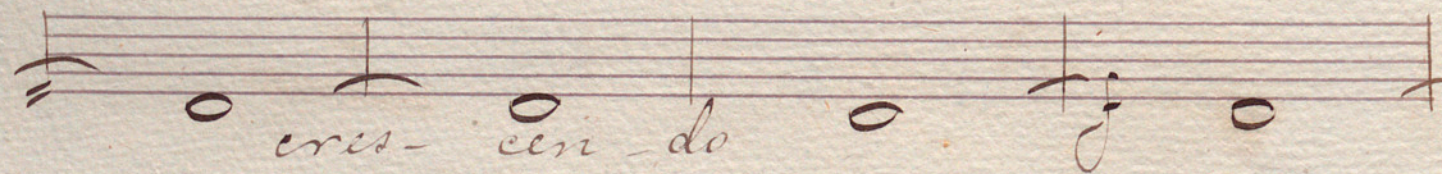
Poco piu | 

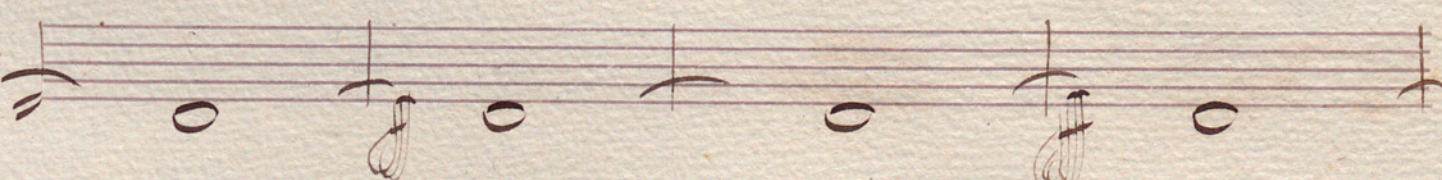


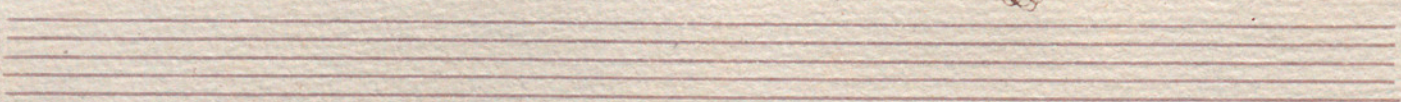
Allo | 











Handwritten musical score on ten staves. The notation includes various note values, rests, and clefs. The lyrics "dis - mi ni en" are written below the fourth, fifth, and sixth staves. The score concludes with a large "FIN" and a treble clef on the tenth staff.

Scena 3^a

Poco più mosso | $\text{G}\sharp$ $\frac{5}{2}$ C |

All^o | $\frac{3}{2}$ | Alleg^{ro} assai | $\frac{2}{2}$ |

eres - cen - do

All^o deciso | $\frac{2}{2}$ |

Mood^{ro} | $\frac{3}{2}$ |

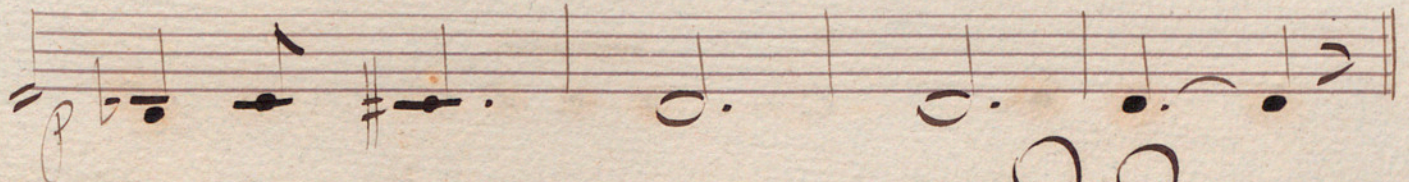
All^o | $\text{G}\sharp$ C D E $\text{F}\sharp$ $\text{G}\sharp$ |

C D E $\text{F}\sharp$ $\text{G}\sharp$ C |

$\text{G}\sharp$ C D E $\text{F}\sharp$ $\text{G}\sharp$ |

Scena 4^a

Adagio | $\text{G}\sharp$ $\frac{6}{8}$ C |

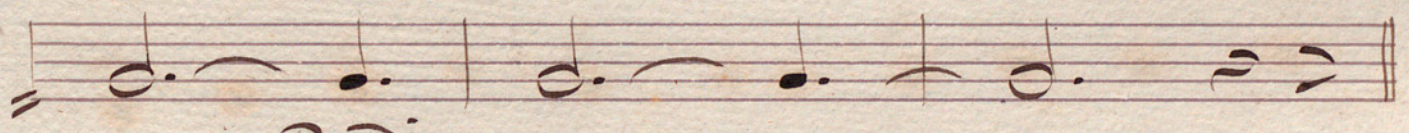


Alleg^{ro} non troppe || *22*

Mood^{ro} non molto || *g*

Adagio || *Adagio* *A* *Adagio*

Adagio meno || *g*

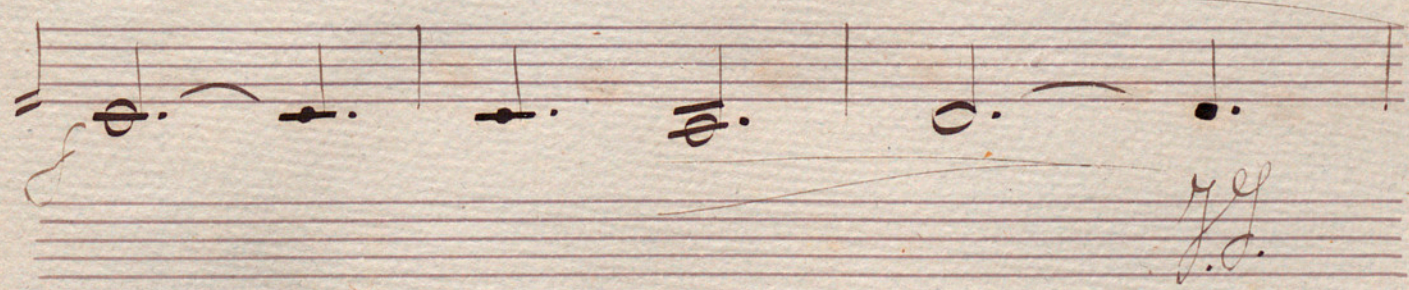


Adagio *dim*

allargando *accelerando*

Adagio *dim*

Adagio



g

Handwritten musical score on aged paper, featuring multiple staves of music. The lyrics "ci - ni - men - do" are written across the second staff. The notation includes various note values, rests, and dynamic markings such as *pppp*. A section marked "And^{te}" is indicated by a double bar line and the tempo marking, followed by a 2/4 time signature and a large, stylized musical symbol. The paper shows signs of age, including discoloration and some staining.

Allegro

Andante

The first section of the page contains two staves of music. The first staff begins with a treble clef, a key signature of one sharp (F#), and a common time signature (C). The tempo marking 'Allegro' is written in a large, decorative hand. The music consists of a few notes, including a half note and a quarter note. The second section begins with the tempo marking 'Andante' and continues with more complex notation, including a double bar line, a fermata, and various note values. The notation is highly decorative and characteristic of 18th-century manuscript style.

Fin del Acto 1^o

Acto 2^{no}

Cuadro 1^o

Escena 1^a (En Fa)

Musical notation for the beginning of the scene, including a treble clef, a key signature of one flat (B-flat), and a 3/4 time signature. The notation includes a double bar line and a fermata over a note.

Musical notation for the first system, featuring a treble clef, a 2/4 time signature, and a large letter 'A' marking the start of a section. The notation includes various note values and rests.

Musical notation for the second system, featuring a treble clef and a 2/4 time signature. The notation includes various note values and rests.

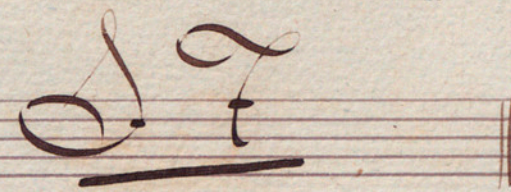
Musical notation for the third system, featuring a treble clef and a 2/4 time signature. The notation includes various note values and rests.

Musical notation for the fourth system, featuring a treble clef and a 2/4 time signature. The notation includes various note values and rests.

Musical notation for the fifth system, featuring a treble clef and a 2/4 time signature. The notation includes various note values and rests.

Musical notation for the sixth system, featuring a treble clef and a 2/4 time signature. The notation includes various note values and rests.

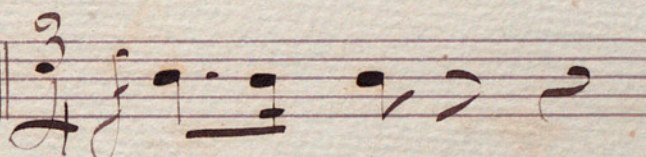
Empty musical staves at the bottom of the page.

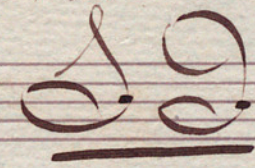
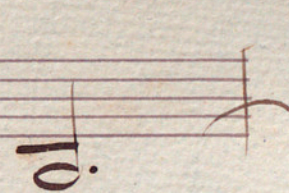
Poco piu animato | 


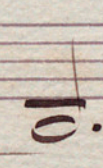
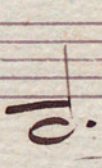
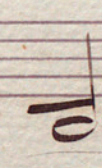
Andante | 


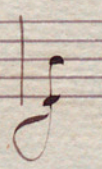
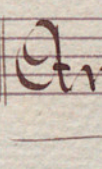
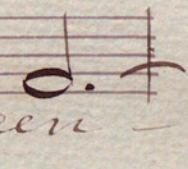
Poco meno |  *Mod^{to}* | 

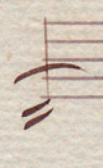



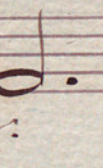
All^o | 

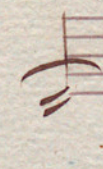

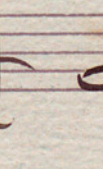


cres | *Alleg^{to}* | 


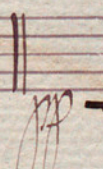
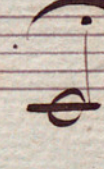
 | *Poco meno* | 

 *cres*  *cen*  *do* 


  *cres*  *cen* | *And^{te}* | 

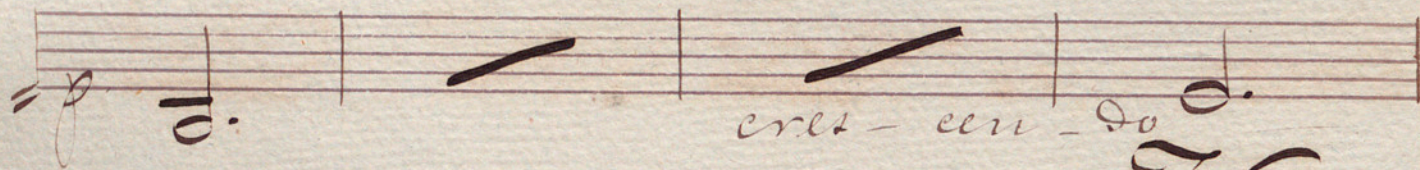
    *molto dim.* 

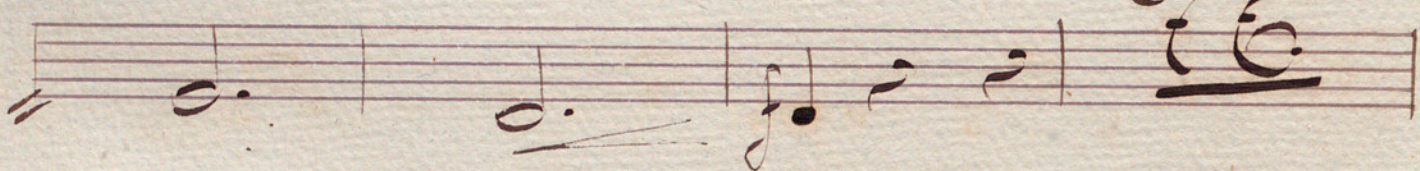
  *dim*   

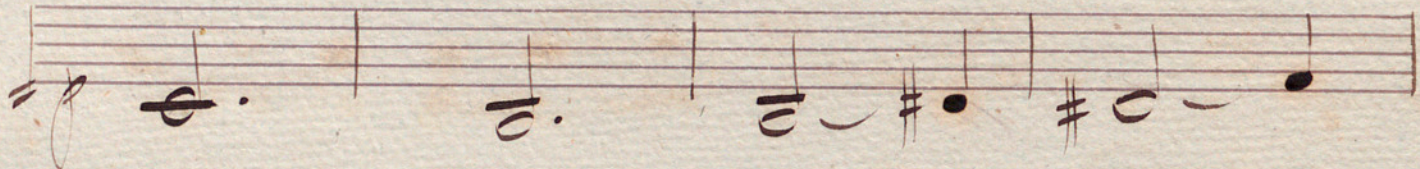
 | *Alargando* | *Mod^{to}* |  

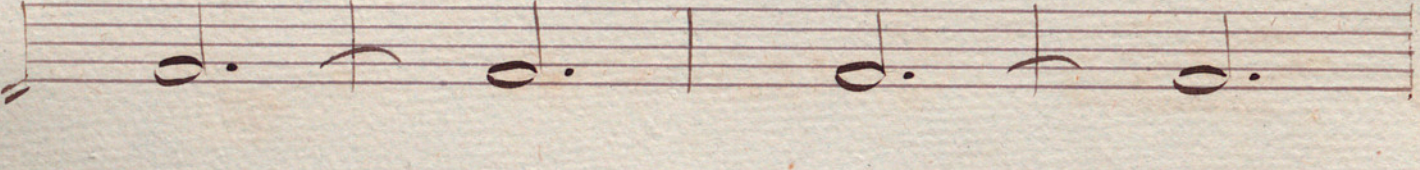
Esena 2^a

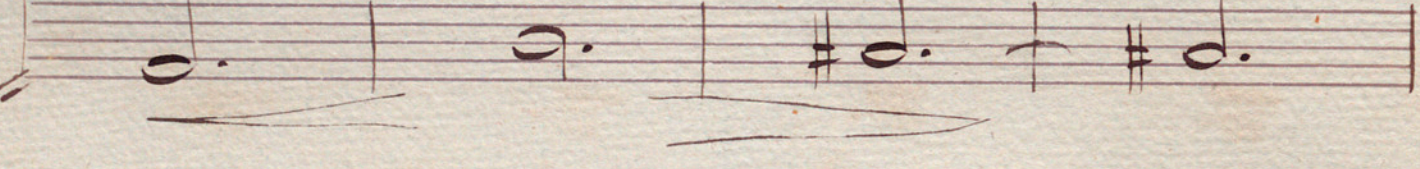
All^o non troppo. 

 *eres - cen - do*





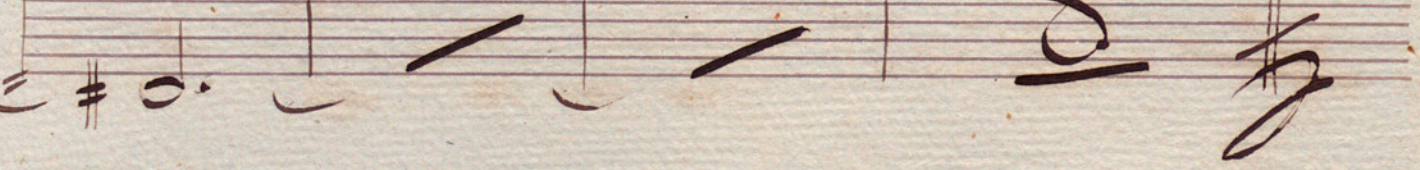




 *dim*




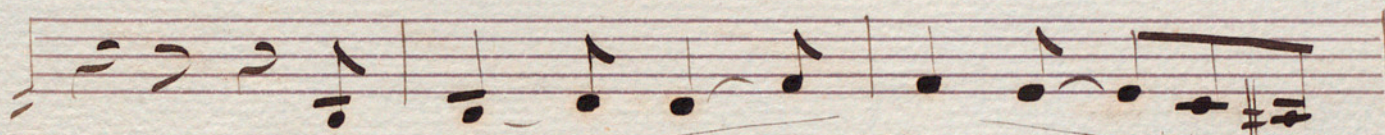


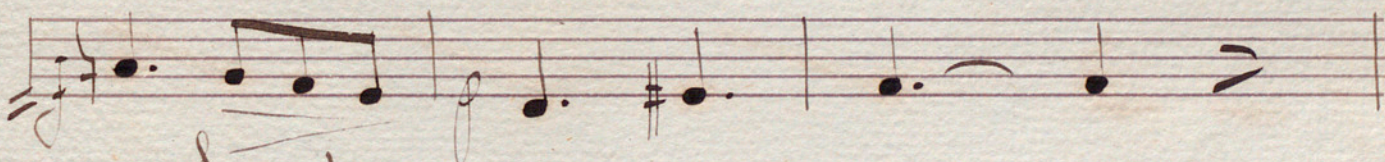
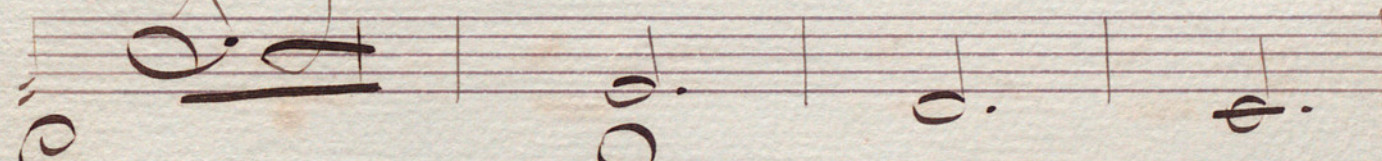


Cuadro 2^o

Escena 3^a

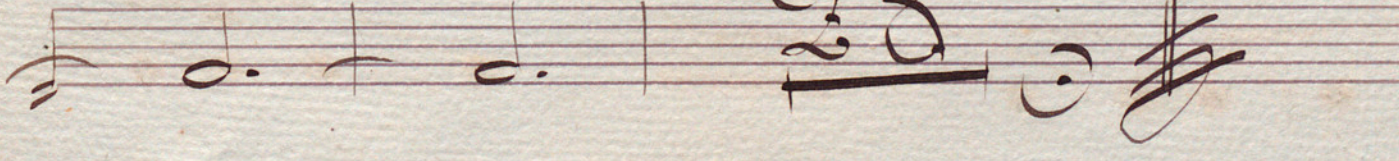
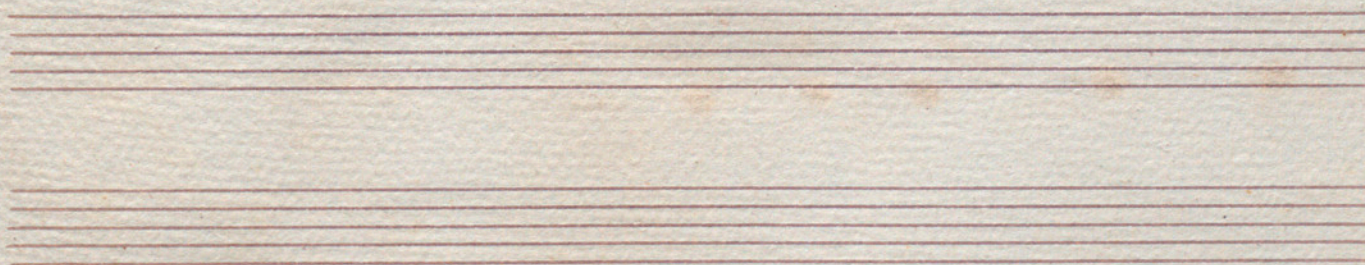
Allig^{to} 



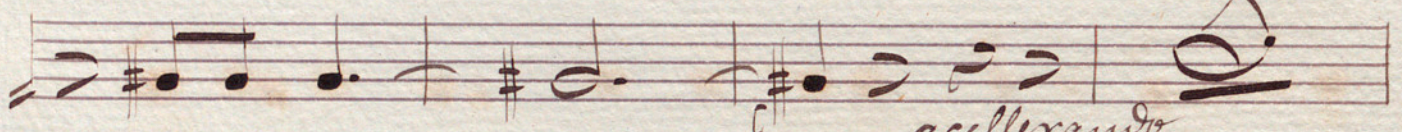
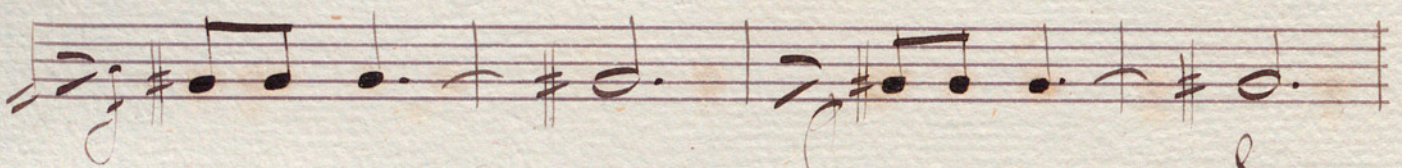
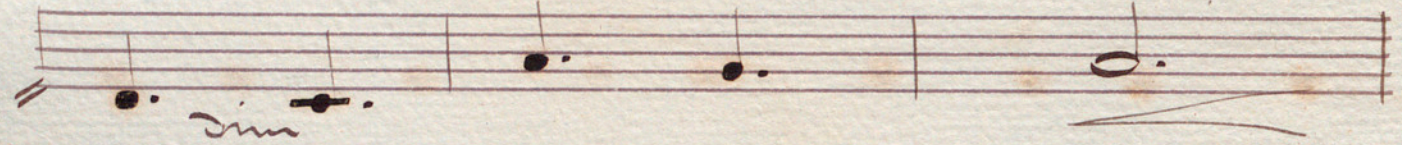
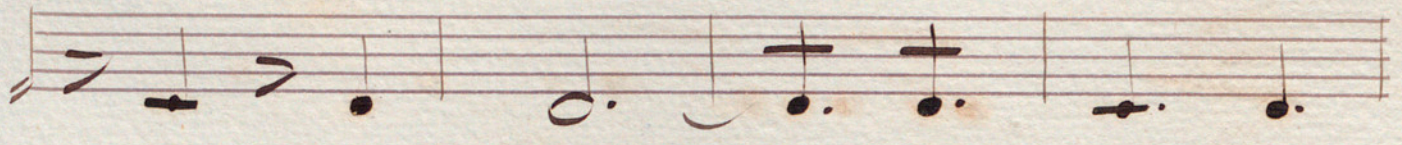

crescendo

dim

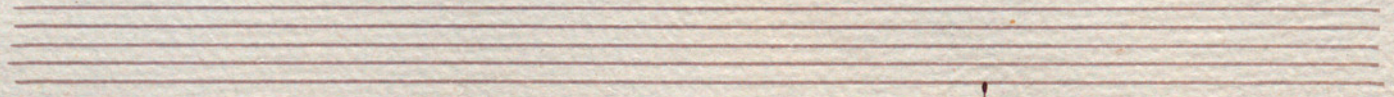
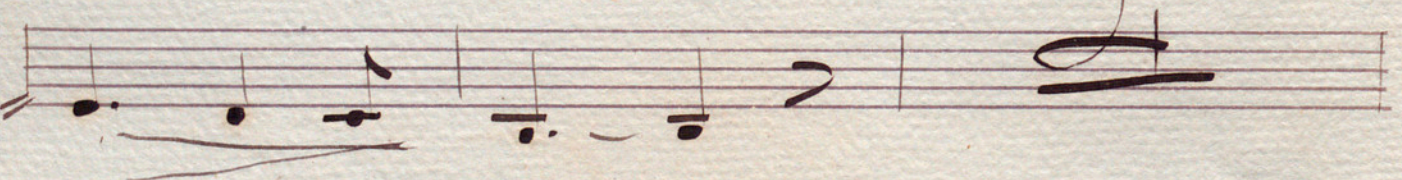
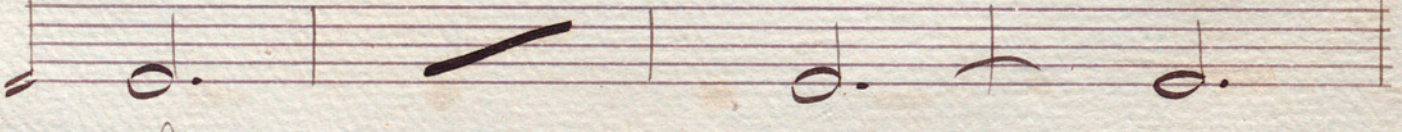
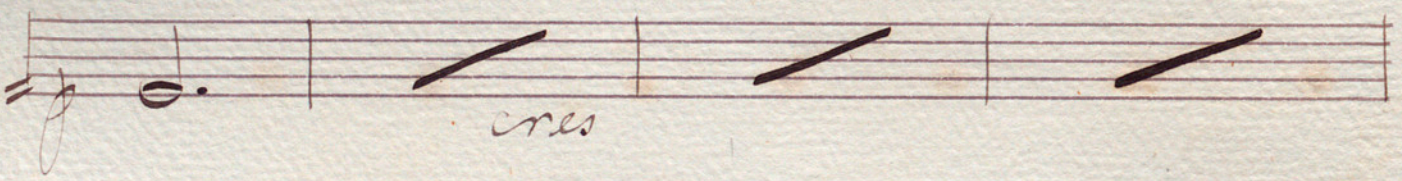




Handwritten musical score on ten staves. The notation includes various note values, rests, and bar lines. The first two staves feature large, decorative initial letters 'G' and 'D'. The score concludes with a double bar line on the tenth staff.

A large, decorative flourish or signature written in cursive script across the bottom of the page.



molto rall || *Alleg^{to} non troppo* || *quasi Andante* || *f* *accelerando* **F** **26**



Handwritten musical score on ten staves. The first staff begins with a treble clef and a 2/2 time signature. The notation includes various note values, rests, and slurs. The eighth staff features a large, decorative initial 'B' for the word 'Fin'. The piece concludes with the text 'Fin del Bailable' written in cursive across the eighth and ninth staves.

Andante | H. 2/2

Four empty musical staves with a large, decorative flourish or signature written across them in the center.

This image shows a page of handwritten musical notation on aged, yellowed paper. The score consists of 13 staves. The notation is written in black ink and includes various note values, rests, and dynamic markings. The first staff begins with a treble clef and a key signature of one flat (B-flat). The notation is primarily composed of quarter notes and half notes, often beamed together. There are several instances of the dynamic marking 'ppp' (pianissimo) throughout the score. In the middle staves, there are handwritten annotations that appear to be '2.2' and '2.1', possibly indicating fingerings or specific performance instructions. The paper shows signs of age, including some staining and discoloration.

Handwritten musical notation on four staves. The first three staves contain rhythmic patterns of notes and rests. The third staff includes the instruction "dim".

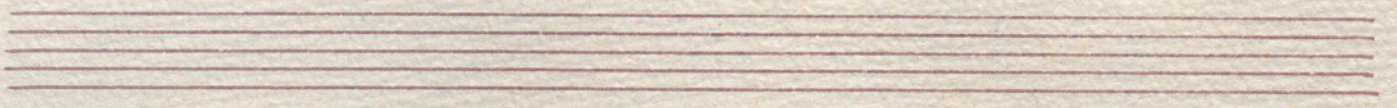
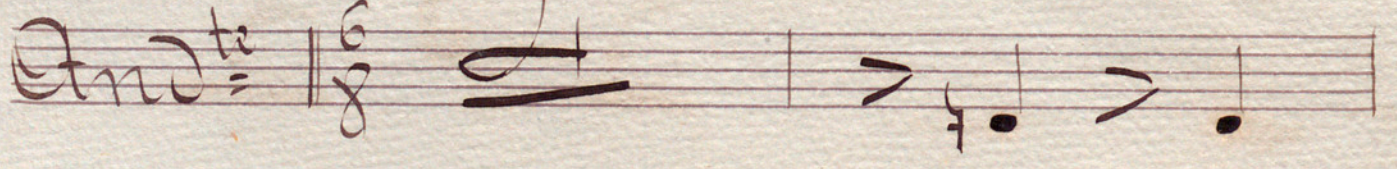
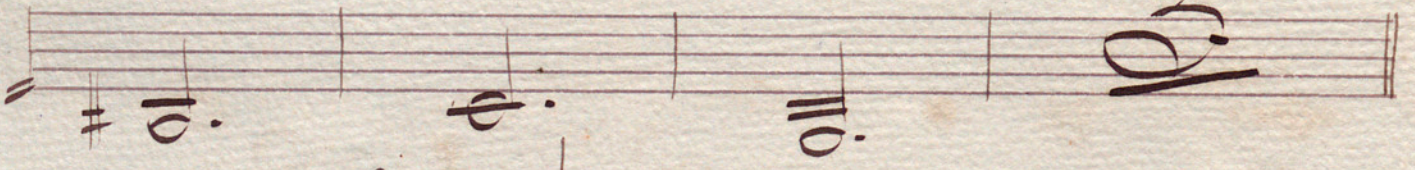
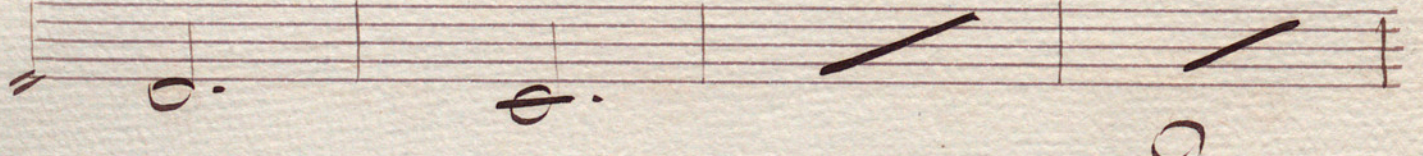
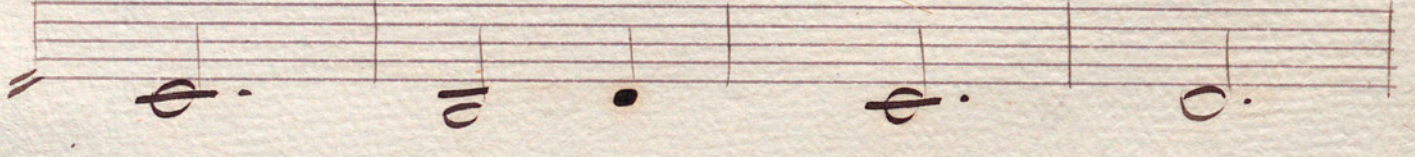
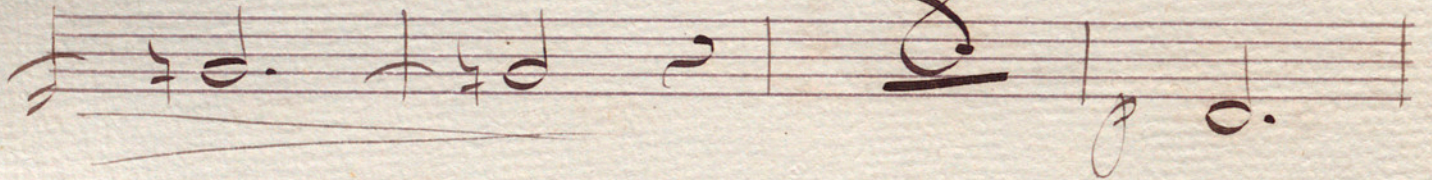
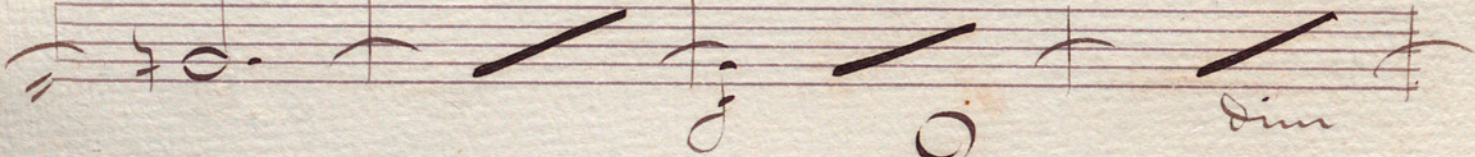
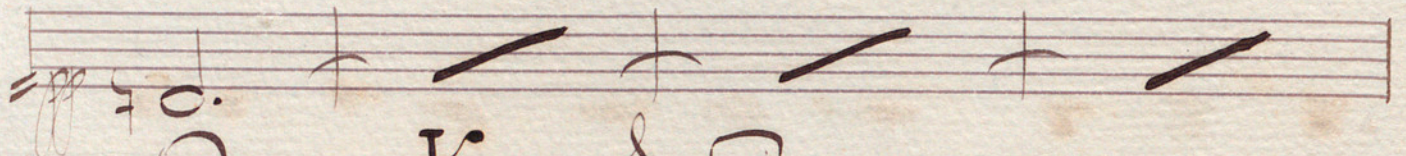
Scena 1^a

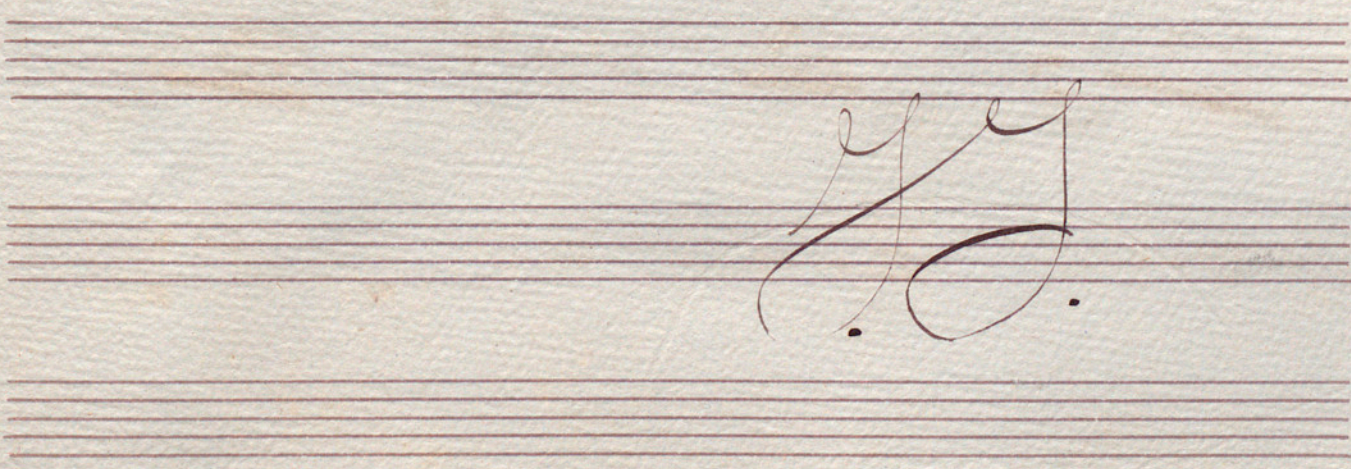
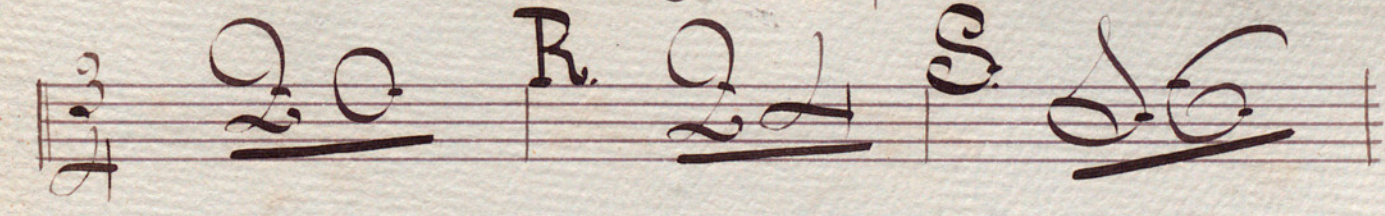
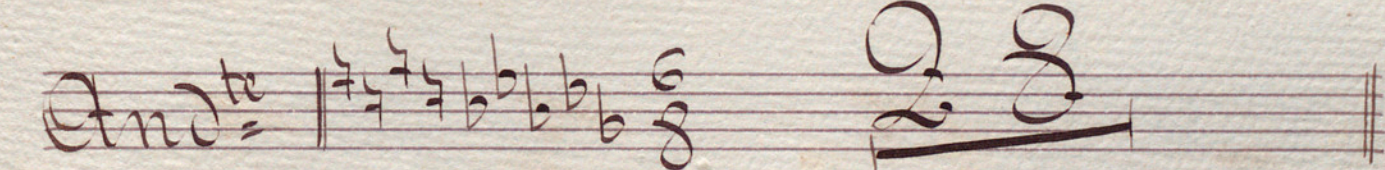
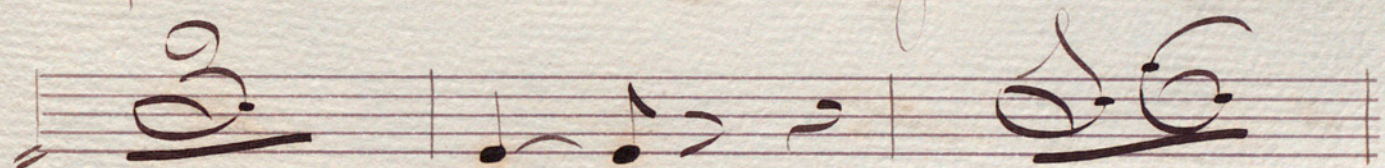
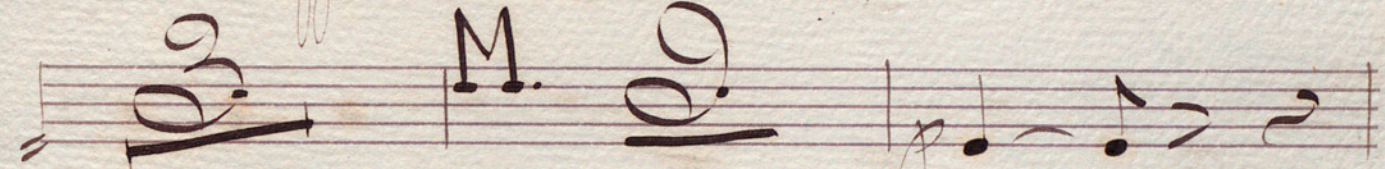
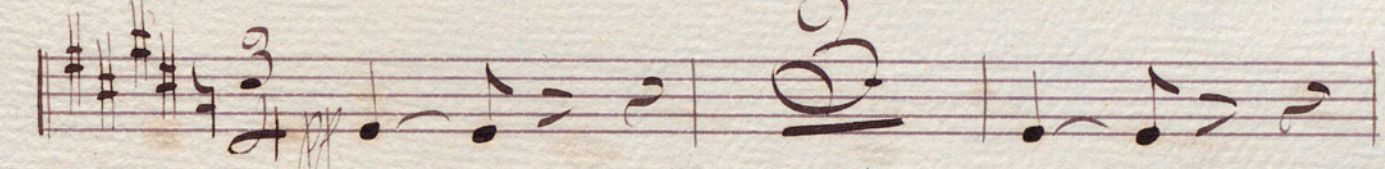
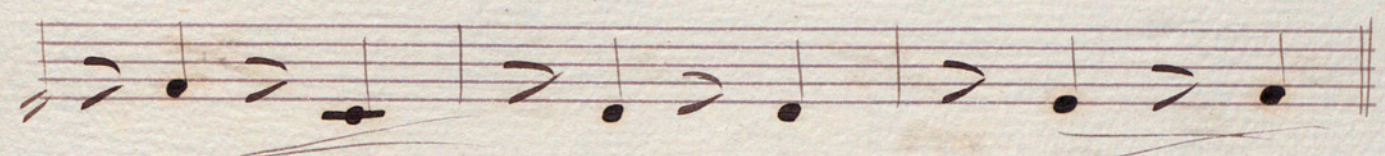
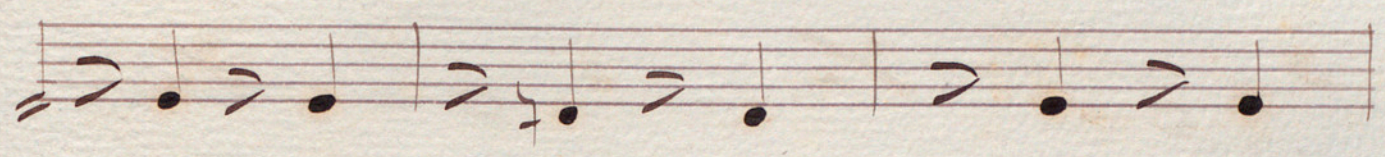
Allegro mosso *crescendo*

Handwritten musical notation on two staves. The second staff includes the instruction "dim:".

Handwritten musical notation on three staves. The third staff features large, stylized notes.

Handwritten signature or initials.





Handwritten signature or initials in cursive script.

molto p.

poco cres - cen - do

Handwritten musical score on ten staves. The notation includes various note values, rests, and dynamic markings. The third staff contains the text "All^o agitato" followed by a key signature change to two sharps and a common time signature. The score concludes with a large signature on the bottom right.

Handwritten musical notation on five staves. The first four staves contain rhythmic patterns with eighth and sixteenth notes, some with beams. The fifth staff contains a series of slanted lines, possibly representing a specific rhythmic figure or a placeholder.

Handwritten musical notation on one staff, featuring a treble clef, a key signature of two flats (B-flat and E-flat), and a series of notes with stems, including a half note and a quarter note.

Sarquette | %

Handwritten musical notation on one staff, featuring a treble clef, a key signature of two flats, and notes with stems, including a half note and a quarter note.

Handwritten musical notation on one staff, featuring a treble clef, a key signature of two flats, and notes with stems, including a half note and a quarter note.

Handwritten musical notation on one staff, featuring a treble clef, a key signature of two flats, and notes with stems, including a half note and a quarter note.

Handwritten musical notation on one staff, featuring a treble clef, a key signature of two flats, and notes with stems, including a half note and a quarter note.

Handwritten musical notation on one staff, featuring a treble clef, a key signature of two flats, and notes with stems, including a half note and a quarter note.

Four empty musical staves at the bottom of the page.

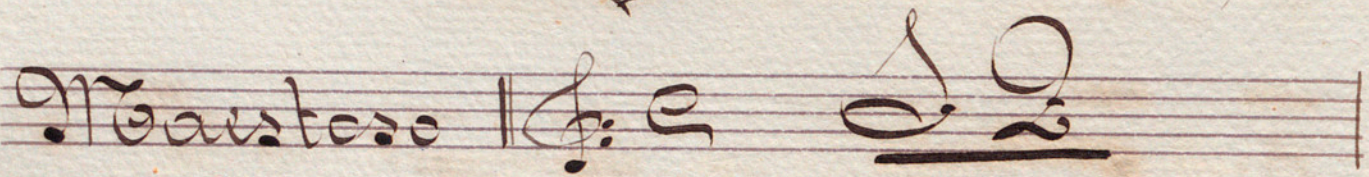
A handwritten musical score consisting of eight staves. The notation includes various note values (quarter, eighth, and sixteenth notes), rests, and bar lines. The first staff begins with a treble clef and a key signature of one sharp (F#). The music is written in a cursive, historical style. The eighth staff concludes with a double bar line and a sharp sign, indicating the end of a section.

perendosi

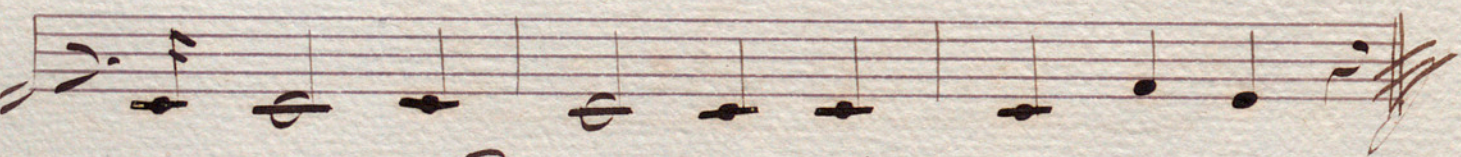
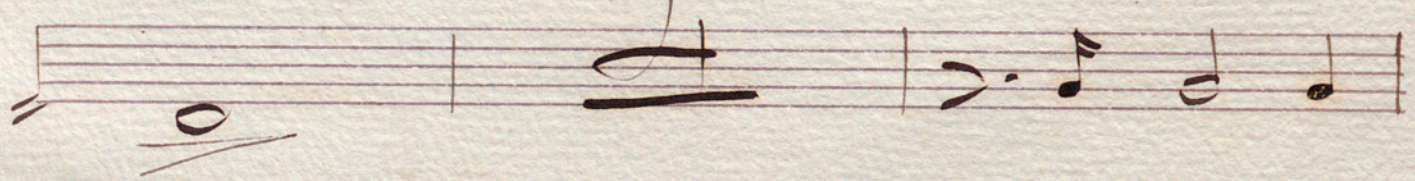
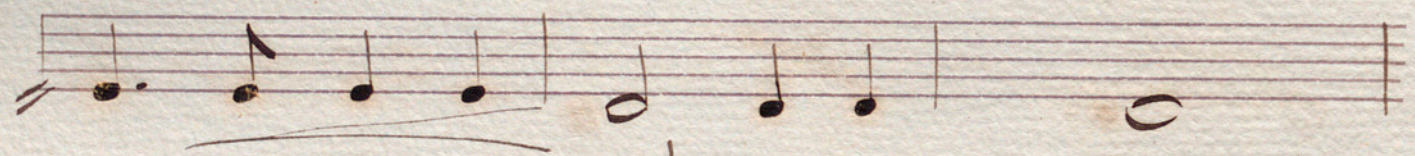
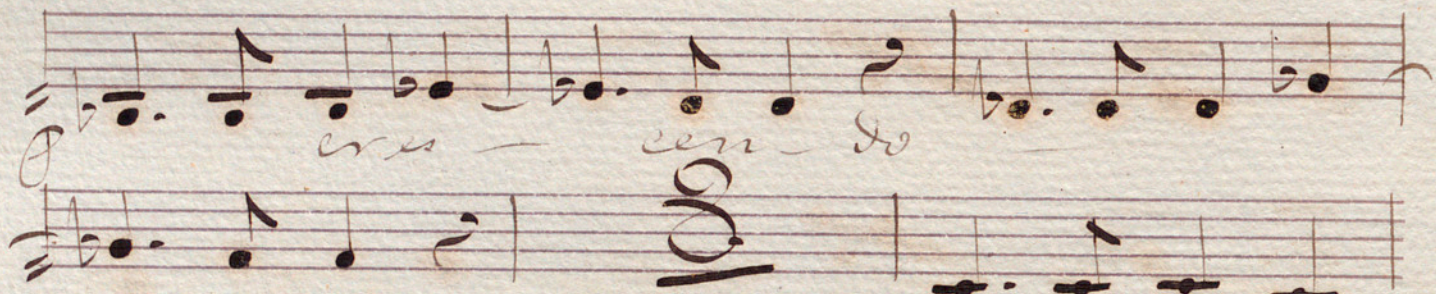
Fin del Acto 2^o

Acto 3^o (Cuadro 1^o)

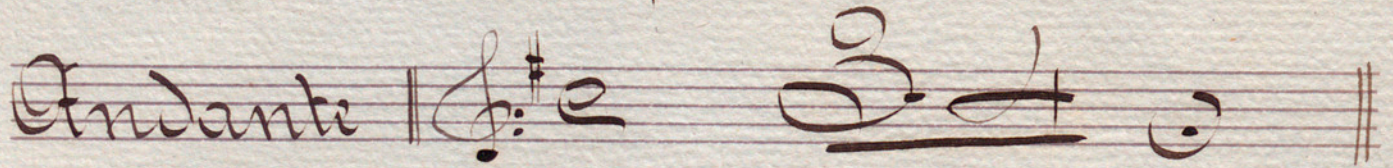
Preludio (En Fa)

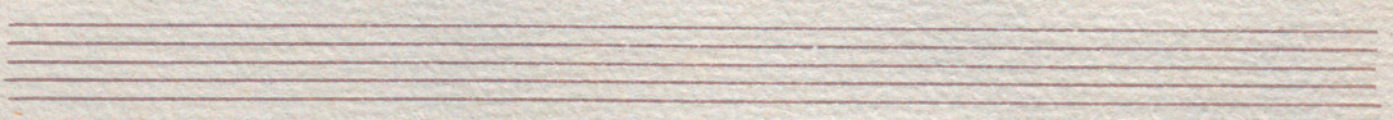
Moderato | $\text{G} \text{C} \text{E}$ 

eres — cen — do



Escena 1^a

Andante | $\text{G} \text{C} \text{E}$ 



Alleg^{ro} non tanto agitate

Key signature: 2 flats (B-flat, E-flat)
 Time signature: 3/4

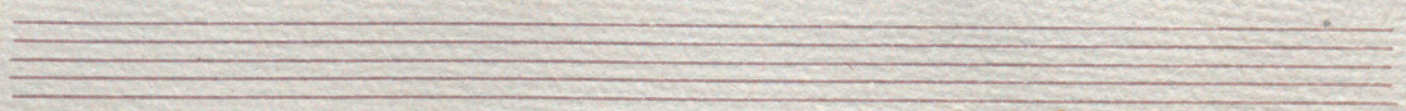
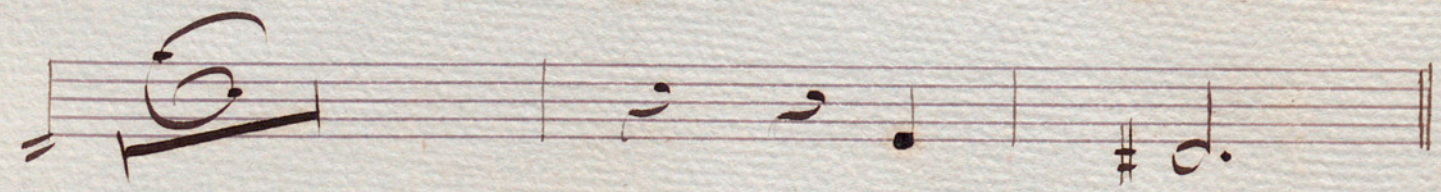
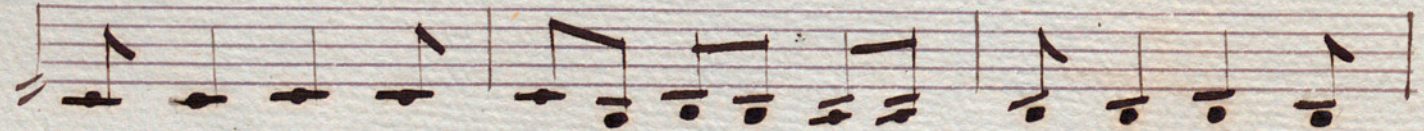
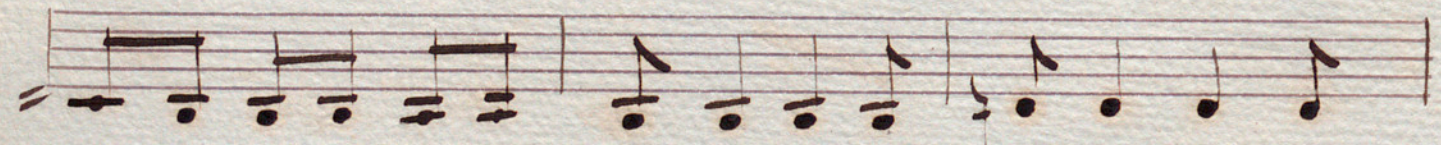
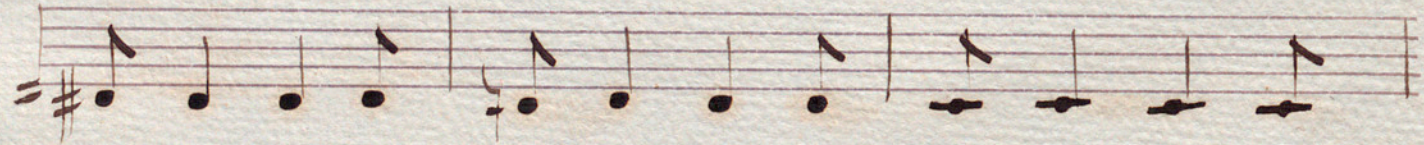
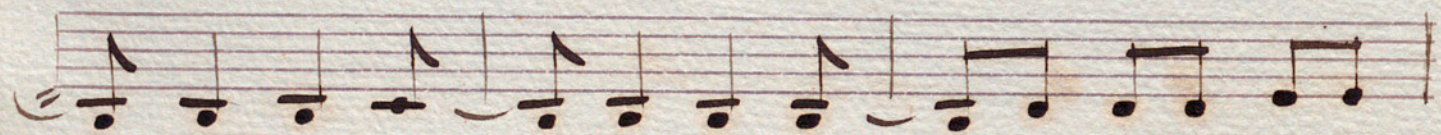
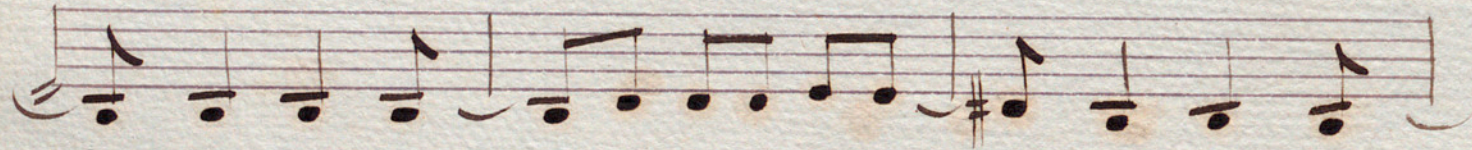
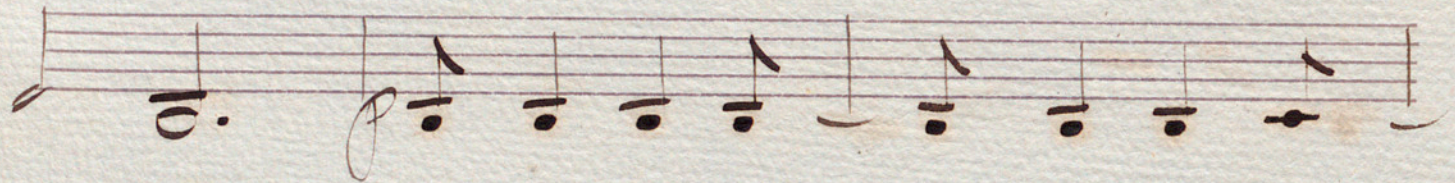
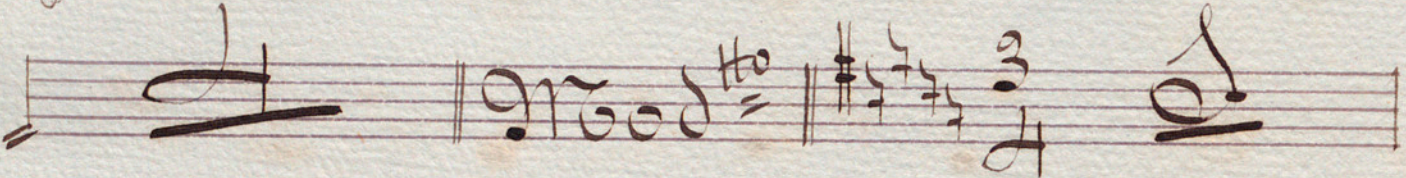
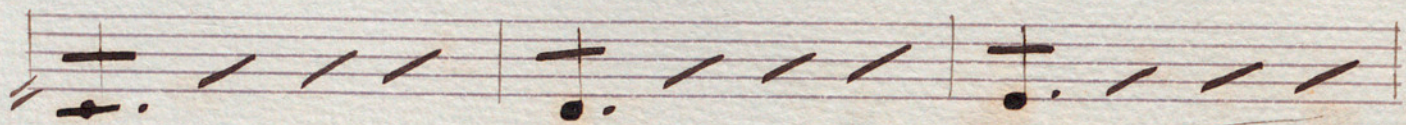
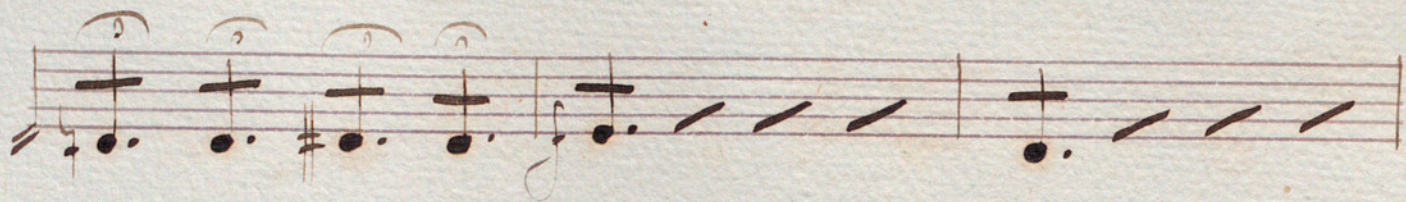
Handwritten musical score for a string quartet, consisting of eight staves. The notation includes various note values, rests, and dynamic markings. The first staff contains the tempo and performance instructions. The second and third staves show a melodic line with a slur and a fermata. The fourth and fifth staves show a similar melodic line with a slur and a fermata. The sixth staff contains the tempo change to 'Andante' and a key signature change to 3 flats (B-flat, E-flat, A-flat). The seventh and eighth staves show a melodic line with a slur and a fermata. The score ends with a double bar line and a sharp sign.

Escena 2^a


A handwritten musical score on aged paper, titled "Escena 2^a". The score is written in a cursive style and consists of ten staves. The first staff begins with a treble clef, a key signature of one sharp (F#), and a common time signature (C). The music is written in a single melodic line. The notation includes various note values such as quarter, eighth, and sixteenth notes, as well as rests. There are several large, decorative flourishes or ornaments interspersed throughout the piece, particularly on the first, third, fifth, seventh, and ninth staves. The score concludes with a double bar line on the tenth staff. Below the tenth staff, there are three empty staves.

Handwritten musical score on ten staves. The notation includes various note values (half notes, quarter notes, eighth notes), rests, and dynamic markings such as *ff* and *rit.*. The score is written in a cursive style. A large, stylized signature or initial is written across the top of the first staff. The music concludes with a double bar line and repeat dots on the tenth staff.

Handwritten signature or initials, possibly "G. S.", written in a cursive hand below the musical staves.



Handwritten musical notation on ten staves. The first staff begins with a treble clef and a key signature of three sharps (F#, C#, G#). The notation includes various note values, rests, and dynamic markings such as 'pp'. The music is written in a cursive, historical style.

And^{te} tranquillo || 

Handwritten musical notation on two staves. The first staff continues the melody with various note values and rests. The second staff begins with a treble clef and a key signature of three sharps (F#, C#, G#).

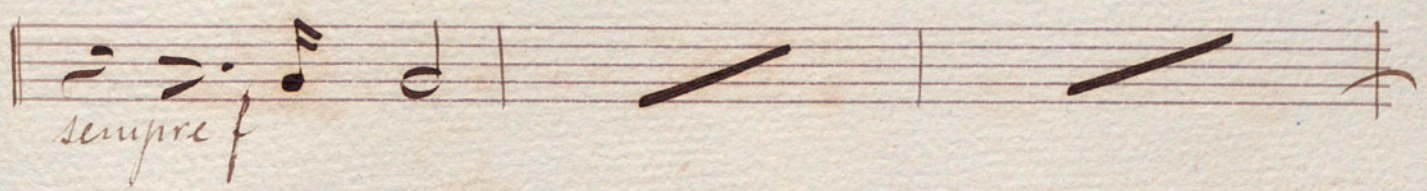
J. J.

Handwritten musical score on ten staves. The notation includes various note values, rests, and dynamic markings. The score is written in brown ink on aged paper.

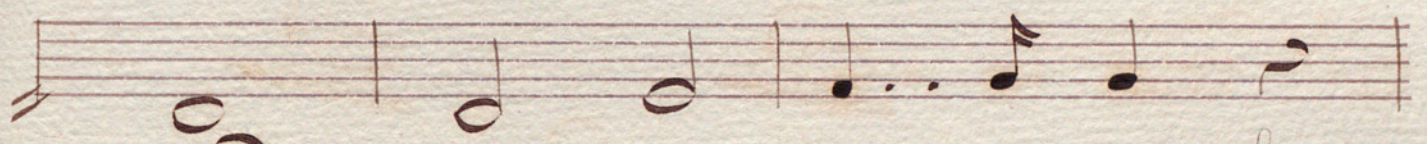
Annotations and markings include:

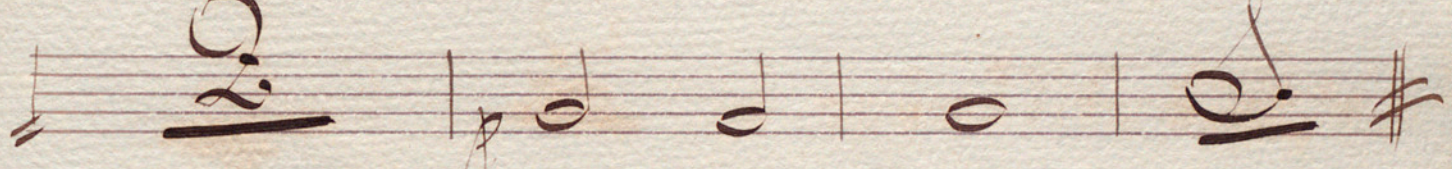
- Handwritten numbers **222** above the third staff.
- Handwritten **pp** (pianissimo) below the sixth staff.
- Handwritten **dim** (diminuendo) above the sixth staff.
- Handwritten **molto dim** (molto diminuendo) above the ninth staff.
- Handwritten numbers **14** and **15** below the sixth and ninth staves, respectively, with diagonal lines through them.
- Diagonal lines through the staves, indicating a section cut or a specific performance instruction.

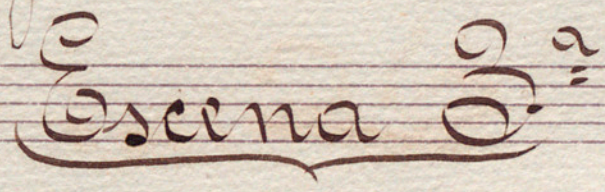
Andante | 

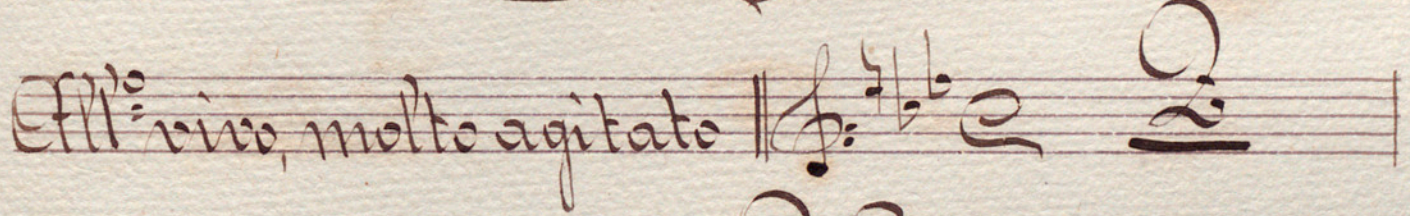
sempre f | 





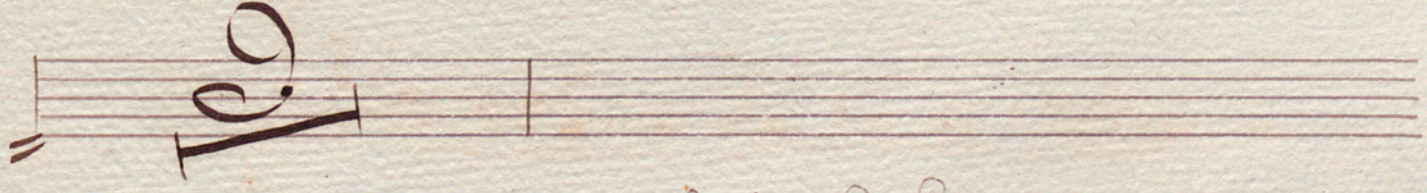


Scena 2^a | 

All^o vivo, molto agitato | 







G. S.

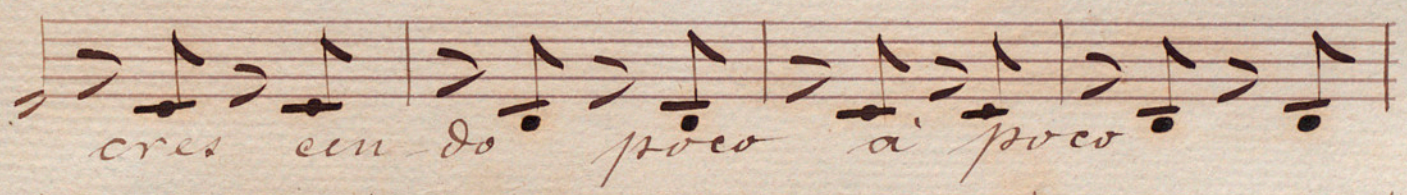
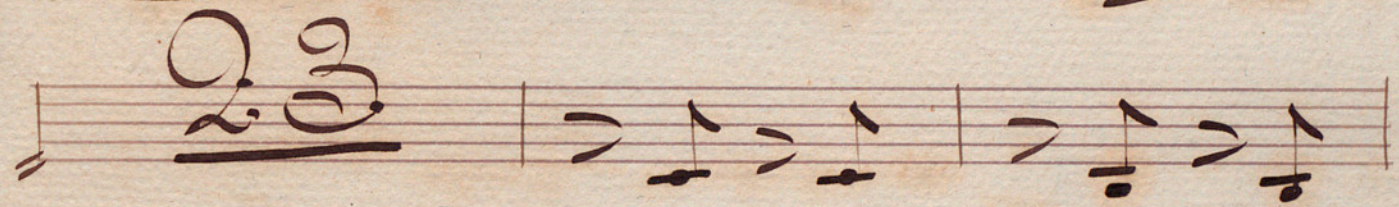
Handwritten musical score consisting of ten staves. The notation includes various note values (quarter, eighth, and sixteenth notes), rests, and bar lines. The music is written in a cursive style. The first staff begins with a treble clef and a key signature of one flat. The second staff contains the instruction "Mod^{to} molto" and a fermata over a note. The third staff contains the instruction "Poco piu mosso". The fourth and fifth staves contain the instruction "Sera e Ep^o All: vivo". The sixth and seventh staves continue the musical notation. The eighth staff ends with a double bar line and a sharp sign. The ninth and tenth staves are empty.

Fin del Cuadro 1^o

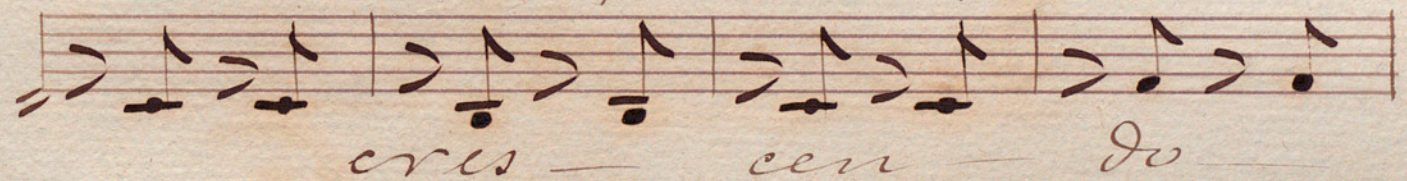
Cuadro 2^o

Intermedio

And^{te} - casi Alleg^{ro} $\frac{2}{4}$



cres cen do poco a poco



cres cen do



Handwritten musical notation on five staves. The first four staves contain rhythmic patterns with notes and rests. The fifth staff contains a melodic line with a sharp sign.

Handwritten musical notation on two staves, featuring a large, ornate flourish or signature.

Scena 4^a

All^{ro} quasi And^{te} | |

Handwritten musical notation on three staves, showing a melodic line with various note values and rests.

Two empty musical staves at the bottom of the page.

Poco meno

J. C.

Moder^{to} non molto || $\frac{4}{4}$ $\frac{2}{4}$ $\frac{2}{4}$ $\frac{2}{4}$ $\frac{2}{4}$

And^{te} - casi Alleg^{to} || #

Scena 5^a

And^{te} - tranquillo || $\frac{3}{4}$ # # # # #

55

Poco meno

poco rall

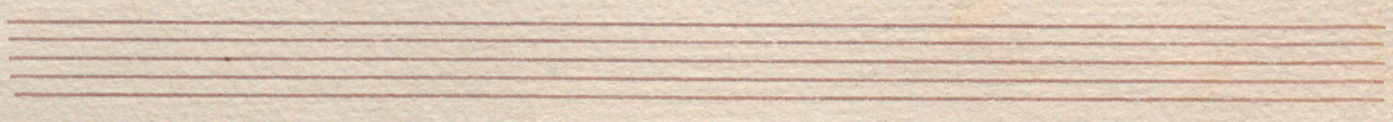
Allegro marcial

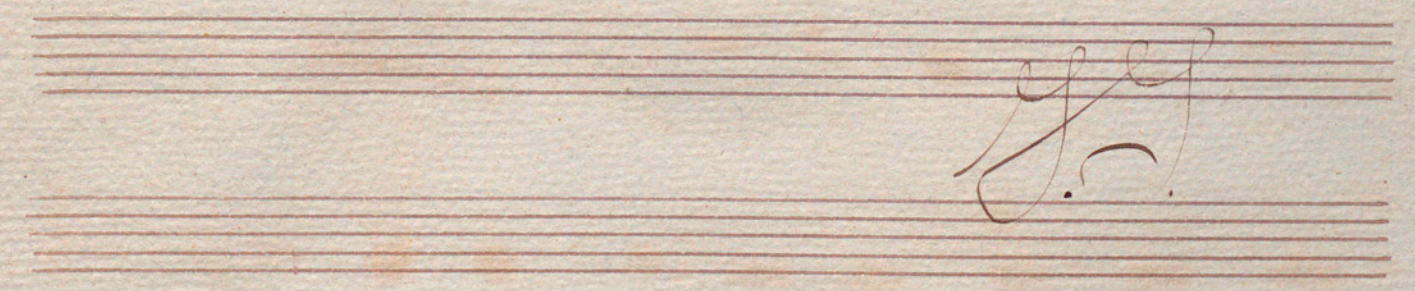
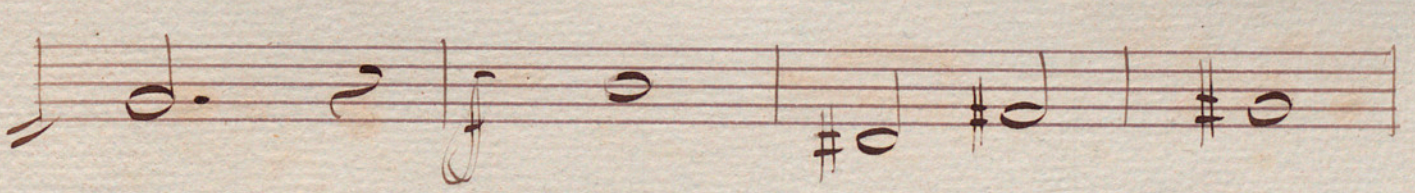
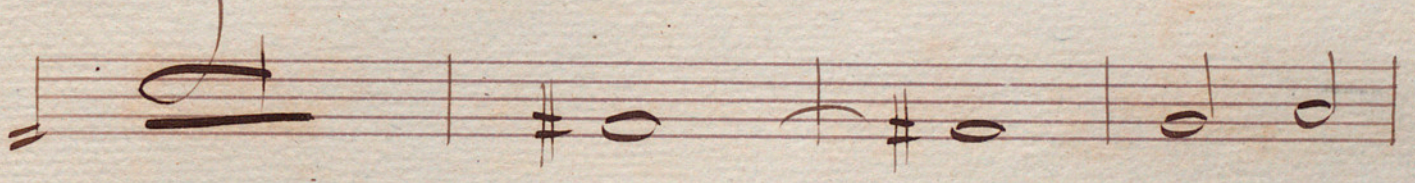
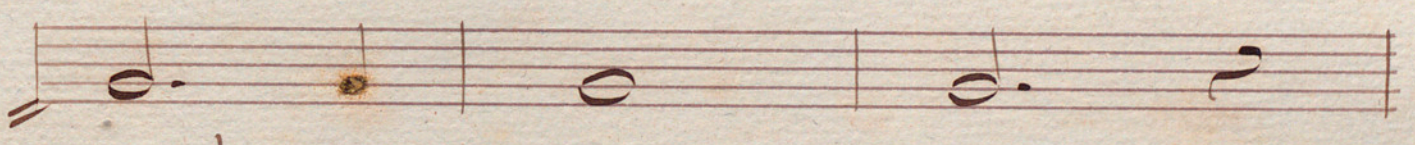
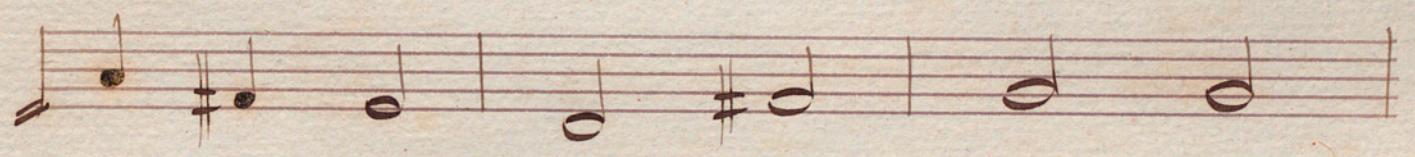
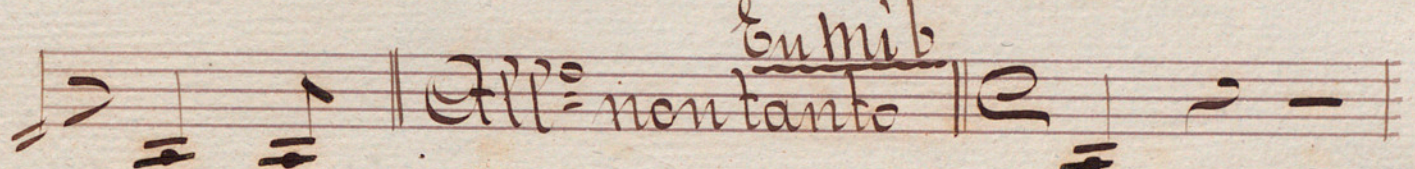
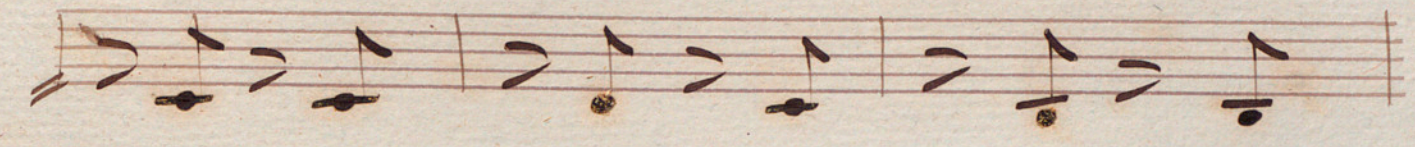
52

Handwritten musical score for the first system, consisting of seven staves. The notation includes various note values, rests, and dynamic markings. A large, decorative flourish is present in the fifth staff.

Poco più mosso | *pp* *crescendo*

sempre crescendo





G. C.

eres — cen — do

Handwritten musical notation on a five-line staff.

Handwritten musical notation on a five-line staff.

Scena 6^a

Handwritten musical notation on a five-line staff.

dim
Handwritten musical notation on a five-line staff.

Mod^{to}
Handwritten musical notation on a five-line staff.

Poco piu animato
Handwritten musical notation on a five-line staff.

Mod^{to}
Handwritten musical notation on a five-line staff.

Handwritten musical notation on a five-line staff.

Handwritten musical notation on a five-line staff.

Handwritten musical notation on a five-line staff.

Scena 1^a

A handwritten musical score on aged paper, titled "Scena 1^a". The score is written in brown ink and consists of ten staves. The first staff begins with a treble clef, a key signature of one flat (B-flat), and a common time signature (C). The notation includes various note values (half notes, quarter notes, eighth notes), rests, and dynamic markings such as *pp* (pianissimo) and *f* (forte). There are several large, stylized annotations or corrections written vertically across the staves, including "2/2", "2/4", and "2/2". The paper shows signs of age, with some staining and a slightly irregular edge on the left side.



J. D.

A handwritten musical score consisting of six staves. The notation includes various note values (quarter, eighth, and sixteenth notes), rests, and slurs. The first five staves contain the main melodic and harmonic lines, while the sixth staff features a large, decorative flourish that resembles a stylized 'F' or a similar symbol, possibly indicating a final cadence or a specific performance instruction.

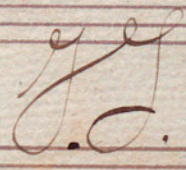
Fin del Acto 2.^o

Epilogo

Scena unica (in Fa)

And^{te} quasi Alleg^{to}  

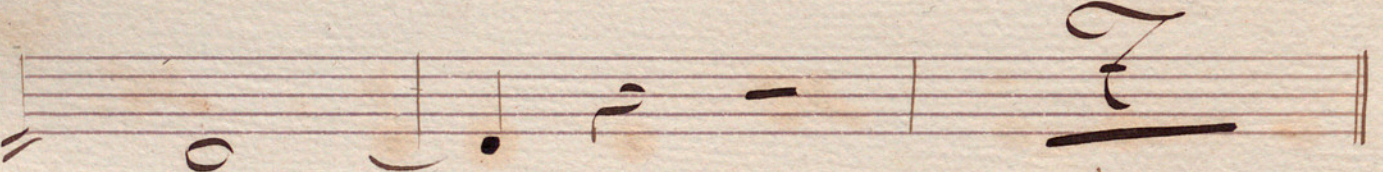
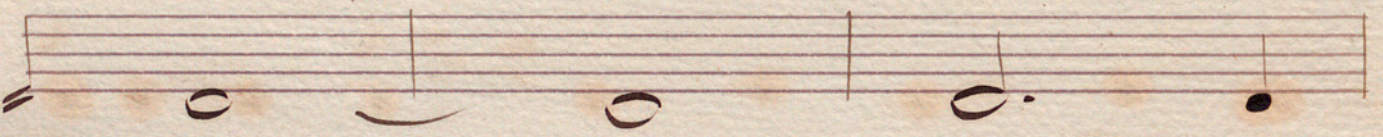
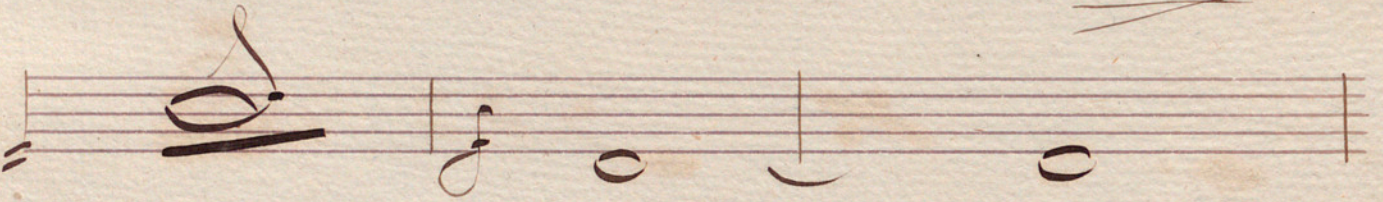
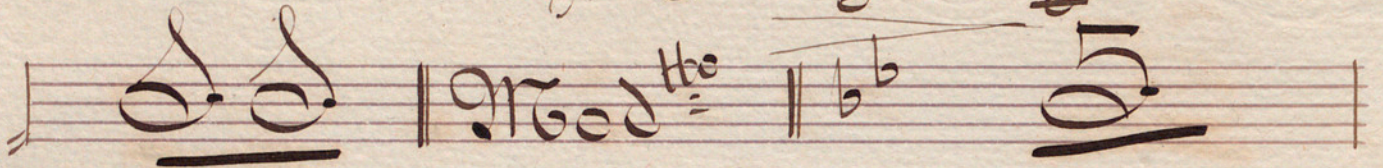
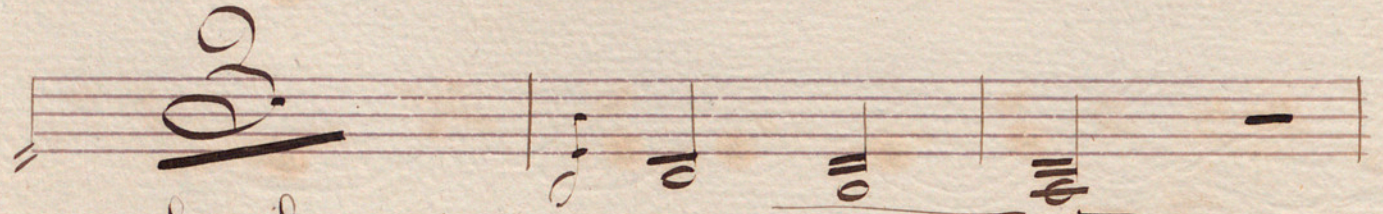




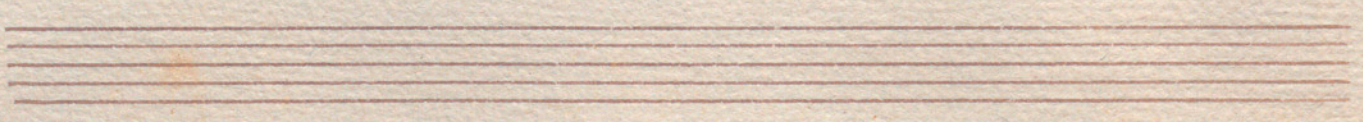
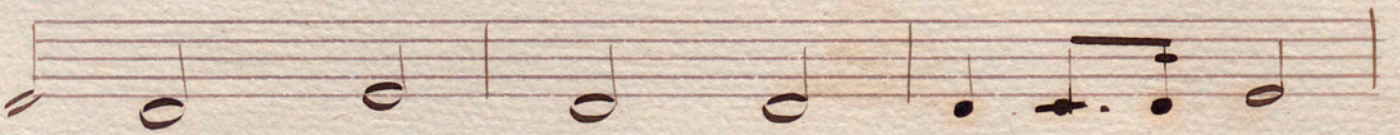
p *poco*
a *poco*
cres
cen
do
sempre
cres *cen*
do
cres *cen* *do*
All

A handwritten musical score consisting of 12 staves. The notation includes various rhythmic values such as eighth and sixteenth notes, rests, and bar lines. The first three staves begin with a treble clef and a common time signature. The fourth and fifth staves feature a bass clef and a common time signature. The sixth staff contains a complex, multi-measure rest. The seventh and eighth staves return to a treble clef. The ninth and tenth staves use a bass clef. The eleventh staff begins with a treble clef and a common time signature. The twelfth staff contains a large, stylized handwritten mark, possibly a signature or a section marker, followed by a double bar line. The bottom of the page shows three empty staves.

Poco meno



And^{te} assai

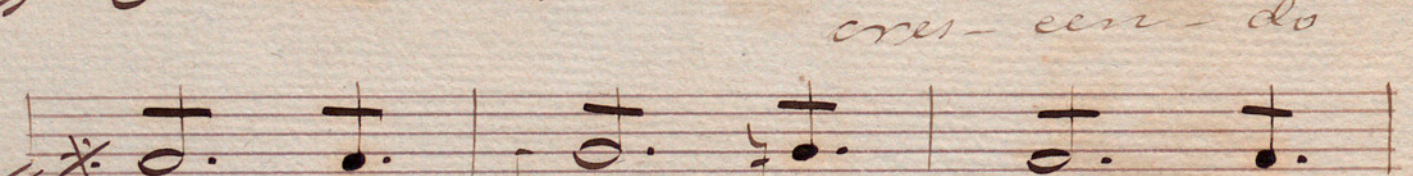
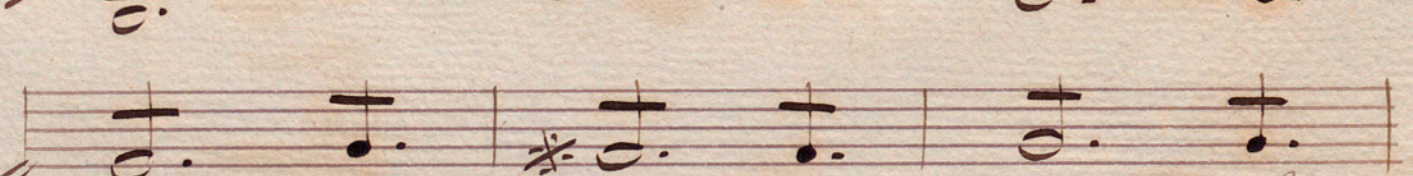
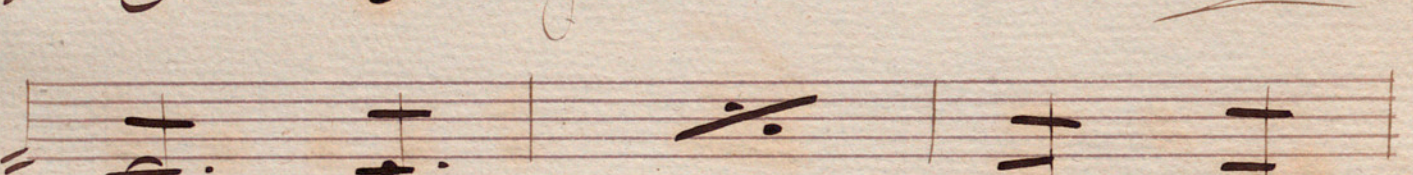
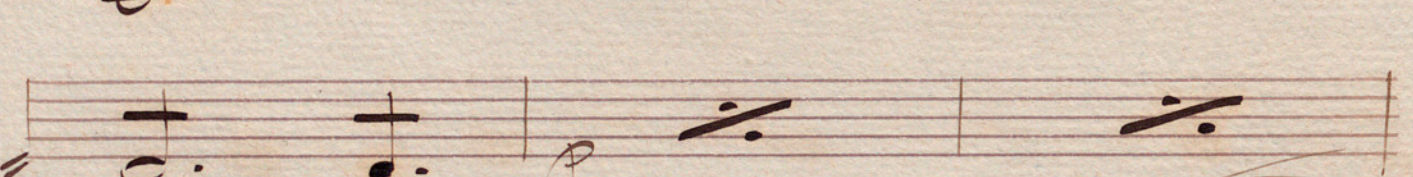
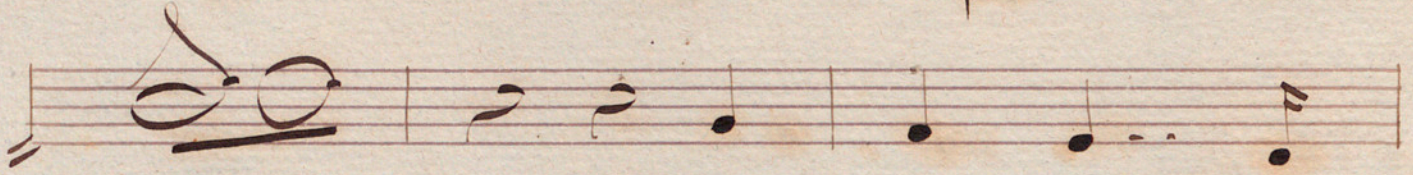


Handwritten musical score on ten staves. The notation includes various note values, rests, and dynamic markings. The lyrics "cen - do" and "sus -" are written below the staves.

Moderatto

$\sharp\sharp$ $\frac{3}{4}$

Handwritten flourish



cres- cen- do

