

M^{ro} Obidi

Aria per Soprano

Ottavino

And^{te} Mod^o $\text{C} \flat \flat$ C 17 ^{8a}

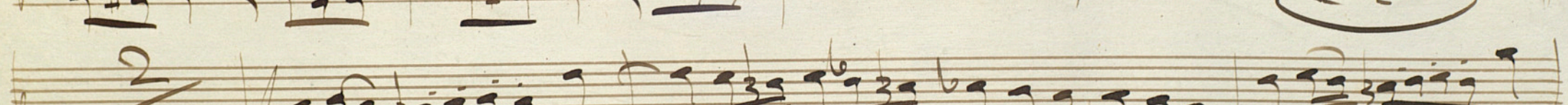
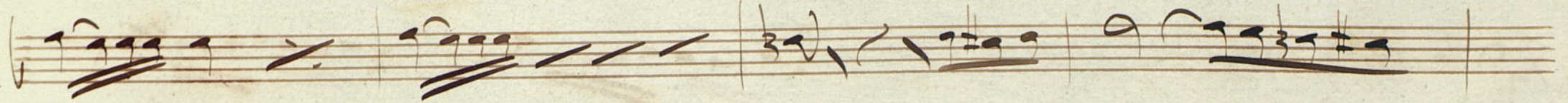
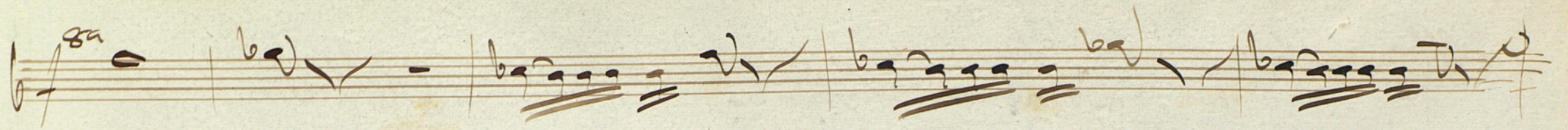
13 20 *puc* *l'incen* ^{so}

And^{te} $\text{C} \flat \flat$ C 19 *mi fedel* 5

6 *fedel* 3

All^o C 3 3

6. s



Handwritten musical notation on three staves. The first staff contains a series of eighth and sixteenth notes with slurs. The second staff continues with similar rhythmic patterns, including some rests. The third staff features a more complex rhythmic structure with many slurs and accents.

Handwritten musical notation on a single staff. It begins with a few notes, followed by a double bar line. The instruction "Dal Ad" is written in cursive, followed by a key signature change from one sharp to two sharps (F# and C#), and the word "y rigue" written below the staff.

Handwritten musical notation on a single staff, consisting of a series of quarter notes, some with stems pointing up and some pointing down.

Handwritten musical notation on a single staff, continuing the series of quarter notes from the previous staff.

Handwritten musical notation on a single staff, featuring a large, decorative flourish or ornament that spans across the staff.

Four empty musical staves, consisting of four sets of five horizontal lines each, arranged vertically.