

J. March

La Mura

Polka

Violin Part



13.

J. March

Introdⁿ

And^{te} giusto

Handwritten musical score for violin. The score is written on five staves. The first staff contains the title 'La Mura' and 'Polka'. The second staff contains the title 'Introdⁿ'. The third staff begins with the tempo marking 'And^{te} giusto' and a 4/4 time signature. The music is written in treble clef with a key signature of two sharps (F# and C#). The score includes various musical notations such as notes, rests, and dynamic markings like 'p' (piano) and 'f' (forte). There are also some handwritten annotations and a large blue scribble over the first two staves.

41045

Handwritten musical notation on two staves. The top staff begins with a treble clef, a key signature of one sharp (F#), and a 2/4 time signature. The bottom staff begins with a bass clef, the same key signature, and a 4/4 time signature. The word "Sardivini" is written in the space between the staves. The notation includes various note values, rests, and dynamic markings such as *p* and accents (*>*).

Handwritten musical notation on a single staff. The notation includes various note values and rests. The word "Sardivini" is written at the end of the staff. The instruction "4^a Corda" is written below the staff. Dynamic markings include *p* and accents (*>*).

Handwritten musical notation on a single staff. The notation includes various note values and rests. The word "Sardivini" is written at the end of the staff. Dynamic markings include *p* and accents (*>*).

Handwritten musical notation on a single staff. The notation includes various note values and rests. The word "Sardivini" is written at the beginning of the staff. Dynamic markings include *p* and accents (*>*).

Handwritten musical notation on a single staff. The notation includes various note values and rests. The word "Sardivini" is written at the end of the staff. The instruction "pizz" is written above the staff. The word "tutti" is written at the end of the staff and circled. Dynamic markings include *p* and accents (*>*).

2ave
2ava
arco

ppp

scia

piz

~~Da~~ ~~al~~ ~~##~~ y signe

Coda

Molto

Soprano

Flute

Violin I

Violoncello

and. to Presto

Handwritten musical score for Violoncello. The score is written on a single staff in treble clef with a key signature of two sharps (F# and C#) and a 2/4 time signature. The tempo marking "and. to Presto" is written at the beginning. The music consists of a series of eighth notes with accents, followed by a measure with a fermata and a "2" written below it. The piece ends with a double bar line and a "C" time signature.

V. P.

Handwritten musical score on eight staves. The first staff begins with a treble clef, a key signature of two sharps (F# and C#), and a time signature of 2/4. The notation includes various rhythmic values, accidentals, and dynamic markings such as *pp*, *p*, and *ppizz*. The word *te* is written above notes in the third and fourth staves. A double bar line with repeat dots appears in the fourth and fifth staves. A key signature change to one sharp (F#) is indicated by a sharp sign on the fifth staff.

D. C. al ♩ y dal ♯♯ Segue

Coda

messe

La Mina

Polka

Violin 2^{do}

Introd^o

Andante

Handwritten musical notation for the first part of the piece, including tempo markings and musical notes.

V. S.

2
p

pizz

arco

pizz

D. C. al ♩ al ♩ y sigue.

Coda

La Mina

Polka

Bajo

Introdu

Andte

D. S.

Handwritten musical score on seven staves. The first staff begins with a treble clef, a key signature of two sharps (F# and C#), and a 2/4 time signature. The music is written in a cursive hand with various ornaments and dynamic markings. The second staff contains a double bar line and a repeat sign. The third staff features a double bar line and a repeat sign. The fourth staff includes the marking *pizz.* above the staff. The fifth staff includes the marking *arco* above the staff and two first endings marked *1^a vez* and *2^a vez* with bracketed repeat signs. The sixth staff includes the marking *pizz.* above the staff. The seventh staff ends with a double bar line and a repeat sign.

D.C. al ~~D~~ al ~~F#~~ y sigue.

Coda = f m | - | - | - | m ~ | m m | m m | m m | m m |

La Mina.

Polka.

Blattin.

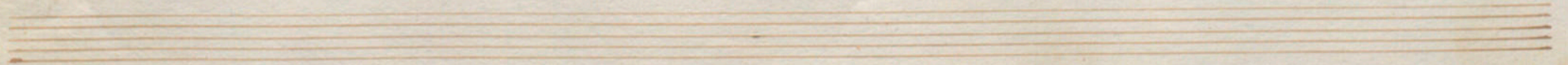
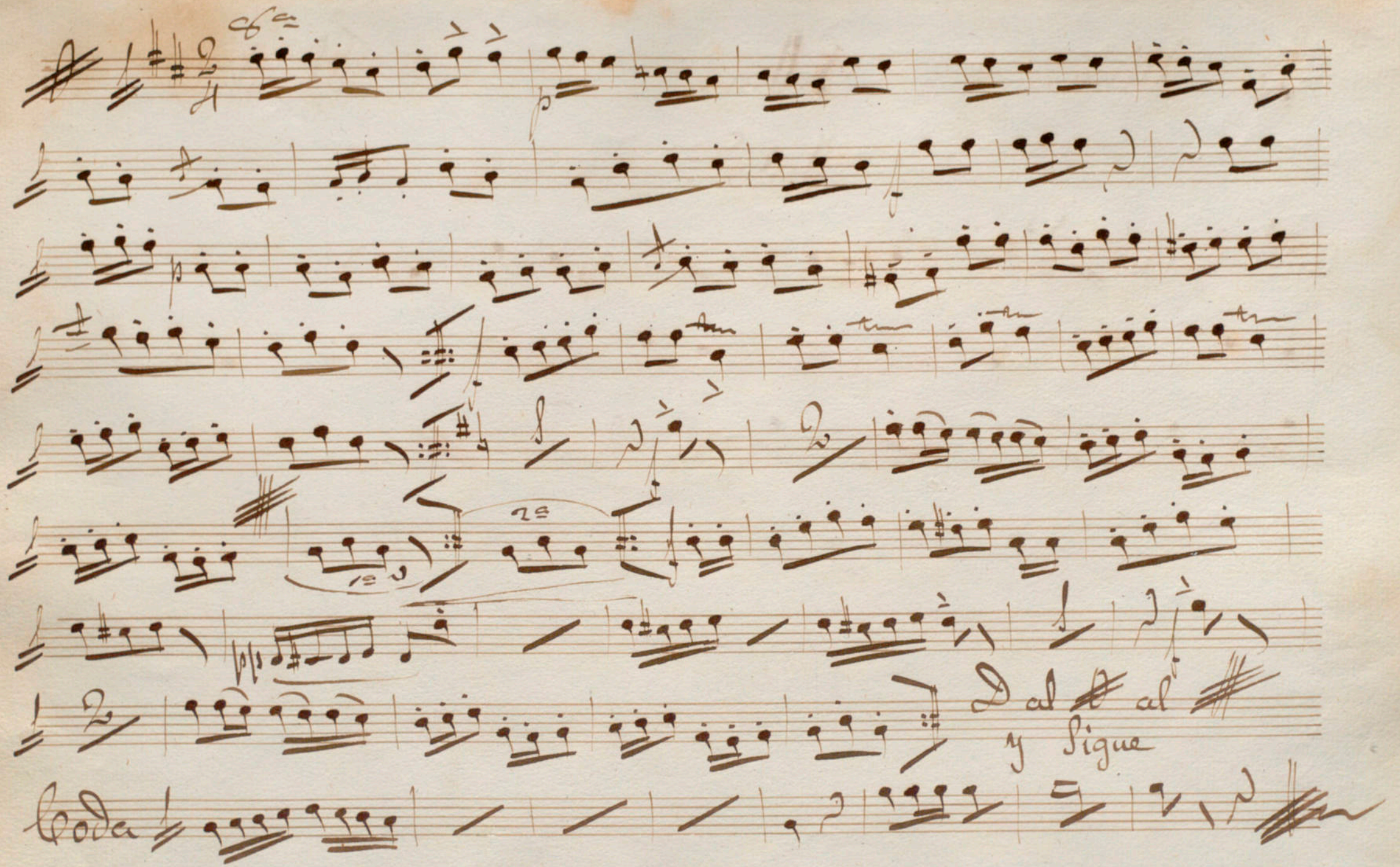
Introd.^m

And^{te} giusto

The musical notation is written on three staves. The first staff begins with a treble clef, a key signature of two sharps (F# and C#), and a 2/4 time signature. The tempo marking 'And^{te} giusto' is written above the first few notes. The notation includes various note values, rests, and dynamic markings such as 'p' (piano) and 'f' (forte). The piece concludes with a double bar line and a repeat sign.

H. S.

Handwritten musical score on ten staves. The notation includes treble clefs, a key signature of one sharp (F#), and a 2/4 time signature. The music features various rhythmic patterns, including eighth and sixteenth notes, and rests. There are several annotations: "of" at the top left, "2e" above a slur in the sixth staff, and "Dal al" and "y sigue" written in the eighth staff. The piece concludes with the word "Coda" on the final staff, followed by a double bar line and a flourish. The paper is aged and shows some staining.



La Mina

Polka

Clarinetto I.

Introd.

And. G.usto

Handwritten musical score for Clarinet I. The score is written on three staves. The first staff is the treble clef, the second is the bass clef, and the third is the bass clef. The key signature is two sharps (F# and C#), and the time signature is 2/4. The tempo is marked 'And. G.usto'. The music begins with a double bar line and a repeat sign. The first staff contains a melodic line with a slur over the first two measures. The second staff contains a bass line with a slur over the first two measures. The third staff contains a bass line with a slur over the first two measures. The music continues with various notes and rests across the three staves.

V. S.

A handwritten musical score consisting of ten staves. The notation includes various rhythmic values such as eighth and sixteenth notes, rests, and dynamic markings like *p* and *pp*. The score is written in a cursive hand on aged, slightly yellowed paper. The first staff begins with a treble clef and a key signature of one sharp (F#). The music is dense and appears to be a single melodic line or a simplified accompaniment.

Dal ~~al~~ al ~~al~~ segue.

Coda

Mosso.

The Coda section consists of a single staff with a treble clef and a key signature of one sharp. It begins with a double bar line and a repeat sign. The notation includes a series of chords and melodic fragments, ending with a fermata. The tempo marking *Mosso.* is written below the staff.



La Mina.

Polka

Clarinet 2^o

Intro^o

And^{te} Sinto

Handwritten musical notation for the beginning of a piece, including a treble clef, key signature (two sharps), 2/4 time signature, and notes with accents and fermatas.

V.P.

Handwritten musical score on ten staves. The notation includes various rhythmic values, accidentals, and dynamic markings such as "pp" and "Coda".

Da al y segue.

Coda
Moto

La Mina.

Folka

Donni.

Introd.

~~Andte~~ ~~lu~~ ~~ke~~

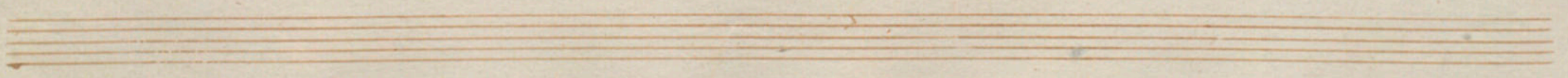
Handwritten musical notation on two staves. The top staff has a treble clef and a 2/4 time signature. The bottom staff has a bass clef and a 4/4 time signature. The notation includes various notes, rests, and bar lines, with some parts crossed out with diagonal lines.

ll.s.

Handwritten musical score on ten staves. The notation includes various note values, rests, and dynamic markings such as 'p' and 'p'. The piece concludes with the word 'Boda' and a double bar line.

~~al~~ ~~al~~ y ligue

Boda



Handwritten musical score on aged paper, featuring ten staves of music. The notation includes treble clefs, a key signature of one flat (B-flat), and a 2/4 time signature. The score contains various rhythmic patterns, including eighth and sixteenth notes, and rests. Performance markings such as *p* (piano), *mp* (mezzo-piano), and *tr* (trills) are present. A first ending is marked with a '1' and a second ending with a '2a vez'. A double bar line is followed by the instruction "Dal C. al # y sigue" in cursive. The piece concludes with a "Coda" section. The paper shows signs of age, including a prominent brown stain on the fourth staff.

La Mina

Polka.

Cornet 2^e

Introdⁿ

Andte lu la

Handwritten musical notation for the first staff, including a treble clef, a key signature of one flat (B-flat), and a 2/4 time signature. The notation consists of several measures with notes and rests, including a double bar line and a fermata.

H.S.

Handwritten musical score on seven staves. The first staff begins with a treble clef, a key signature of one flat (B-flat), and a 2/4 time signature. The notation includes various rhythmic values such as eighth and sixteenth notes, rests, and slurs. There are some handwritten annotations above the notes, including the number '4' and the word 'tu' written multiple times. The music concludes with a double bar line and a fermata.

D al ~~B~~ al ~~C~~ y sigue

Handwritten musical score on a single staff. It begins with the word 'Coda' and the tempo marking 'molto' written below the staff. The notation consists of several notes and rests, ending with a double bar line and a fermata.

La Mina

Polka

Trombon 1^o

Introdⁿ

Andte

Handwritten musical notation for the introduction of 'La Mina' for Trombone 1. The notation is on a single staff with a treble clef. It begins with a key signature of two sharps (F# and C#) and a 2/4 time signature. The tempo is marked 'Andte'. The notation includes several notes with accents, a fermata, and a dynamic marking 'pp'. The piece concludes with a double bar line and a repeat sign.

V. S.

Handwritten musical score on six staves. The first staff begins with a treble clef, a key signature of two sharps (F# and C#), and a 2/2 time signature. The music includes various notes, rests, and dynamic markings such as *p*, *mp*, and *pp*. There are also some handwritten annotations like "1a vez" and "2a vez" with dashed lines. The notation is dense and characteristic of 18th or 19th-century manuscript notation.

Dal ~~♩~~ al ~~♩~~ y sigue

Coda

La Mina.

Polka.

Trombon 2^e.

Introd^o

~~And^{te}~~

Handwritten musical notation for Trombone 2. The notation is written on two staves. The first staff begins with a treble clef, a key signature of one sharp (F#), and a 2/4 time signature. The music includes various notes, rests, and dynamic markings such as 'pp' and 'f'. The second staff continues the notation with similar elements.

P. S.

Handwritten musical score for six staves. The notation includes various rhythmic values, accidentals, and dynamic markings such as *pp*. The music is written in a style characteristic of 18th or 19th-century manuscript notation. The first staff begins with a treble clef, a key signature of two sharps (F# and C#), and a time signature of 2/4. The notation includes notes, rests, and bar lines. There are some annotations like '1^{da}' and '2^{da}' under some notes in the fourth staff.

D. al ~~♩~~ al ~~♩~~ y sigue

loda
molto

Handwritten musical notation for the 'loda' section, consisting of a single staff with notes and rests. The notation is simple, with some notes beamed together. The word 'loda' is written above the staff, and 'molto' is written below it. The notation ends with a double bar line and a flourish.

La Mma.

Polka.

Meg

4 Trombon

3^e

Introd^o

Andte

Handwritten musical notation for the introduction of a polka. The notation is written on two staves. The top staff begins with a treble clef, a key signature of two sharps (F# and C#), and a 2/4 time signature. It contains several measures of music, including a triplet of eighth notes. The bottom staff begins with a bass clef and contains corresponding bass notes and rests. The word "Andte" is written above the first measure of the top staff. The notation is in brown ink on aged paper.

Handwritten musical score on six staves. The notation includes various rhythmic values (quarter, eighth, and sixteenth notes), rests, and dynamic markings such as *pp* (pianissimo) and *ppp* (pianissimissimo). The score features complex rhythmic patterns, including a 3/4 time signature in the first measure of the top staff and a 2/4 time signature in the second measure of the fourth staff. There are also some markings that appear to be *15* and *22* under some notes in the fourth staff.

D. al ~~D.~~ al ~~##~~ y sigue

Handwritten musical notation for a section labeled "Voda". The notation consists of a single staff with a treble clef and a key signature of one sharp (F#). The notes are mostly quarter and eighth notes, with some rests. The word "Voda" is written in a stylized, cursive hand at the beginning of the staff.

moiso

La Nina

Polka

Ofige.

Introd^o

And^{te}

Handwritten musical notation for an introduction, featuring a treble clef, a key signature of one sharp (F#), and a 2/4 time signature. The notation includes several measures of music, including a measure with a double bar line and a fermata, and a measure with a double bar line and a fermata.

Handwritten musical score on six staves. The notation includes various rhythmic values, accidentals, and dynamic markings such as *pp*. The music is written in a cursive style with some slurs and phrasing marks. The first staff begins with a treble clef, a key signature of one sharp (F#), and a 2/4 time signature. The piece concludes with a double bar line and a fermata.

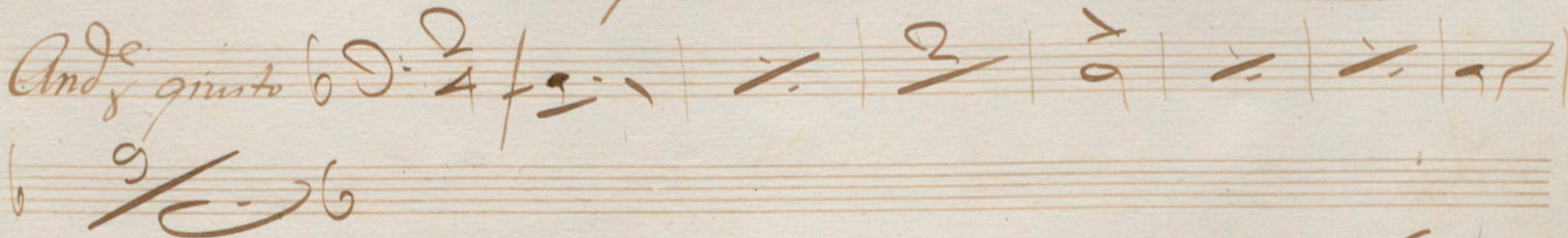
D. al ~~al~~ y sigue

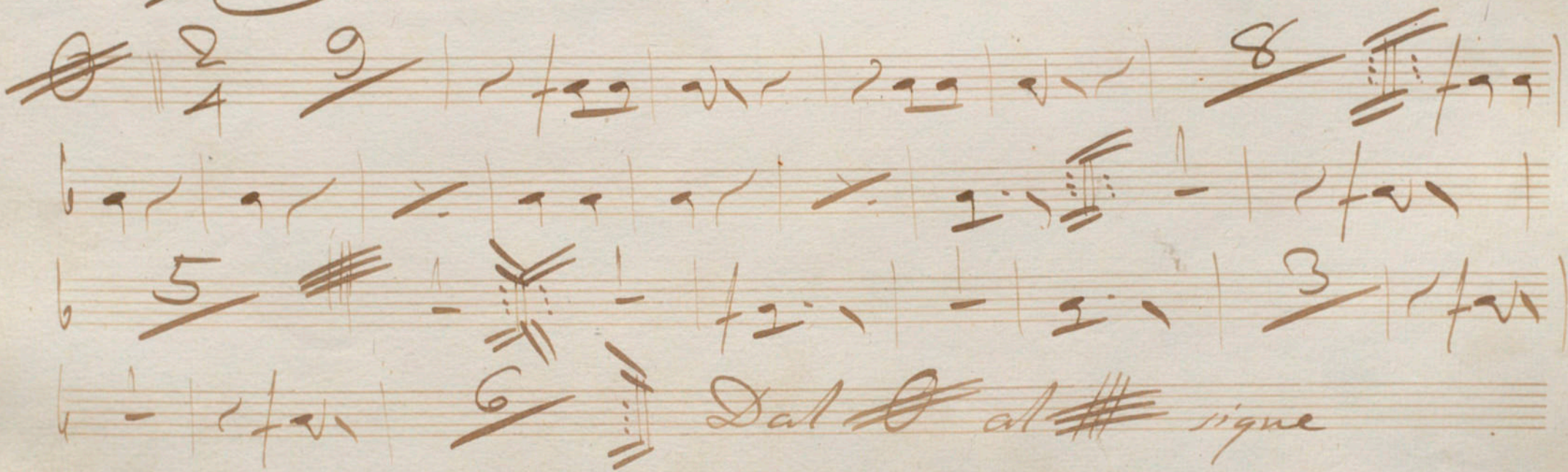
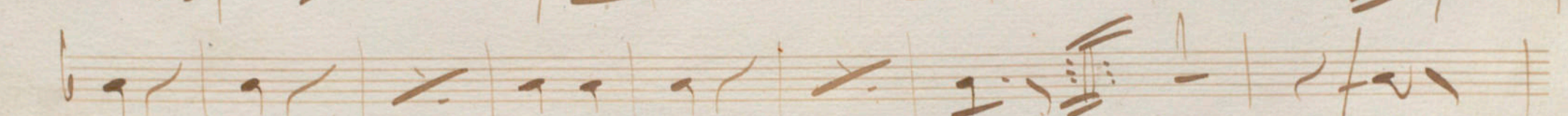
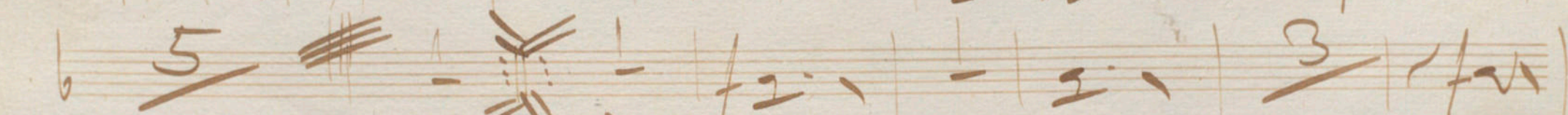

Handwritten musical score for the Coda section. It begins with the word *Coda* and the tempo marking *Molto* written below the staff. The notation consists of a few notes and rests, ending with a double bar line and a fermata. Below this staff are three empty staves.

La Mina

Polka

Bombo

And. giusto 6/8 

 2/4 9/8 8 
5 
6 
Dal $\text{\textcircled{C}}$ al $\text{\text{\#}}$ signe

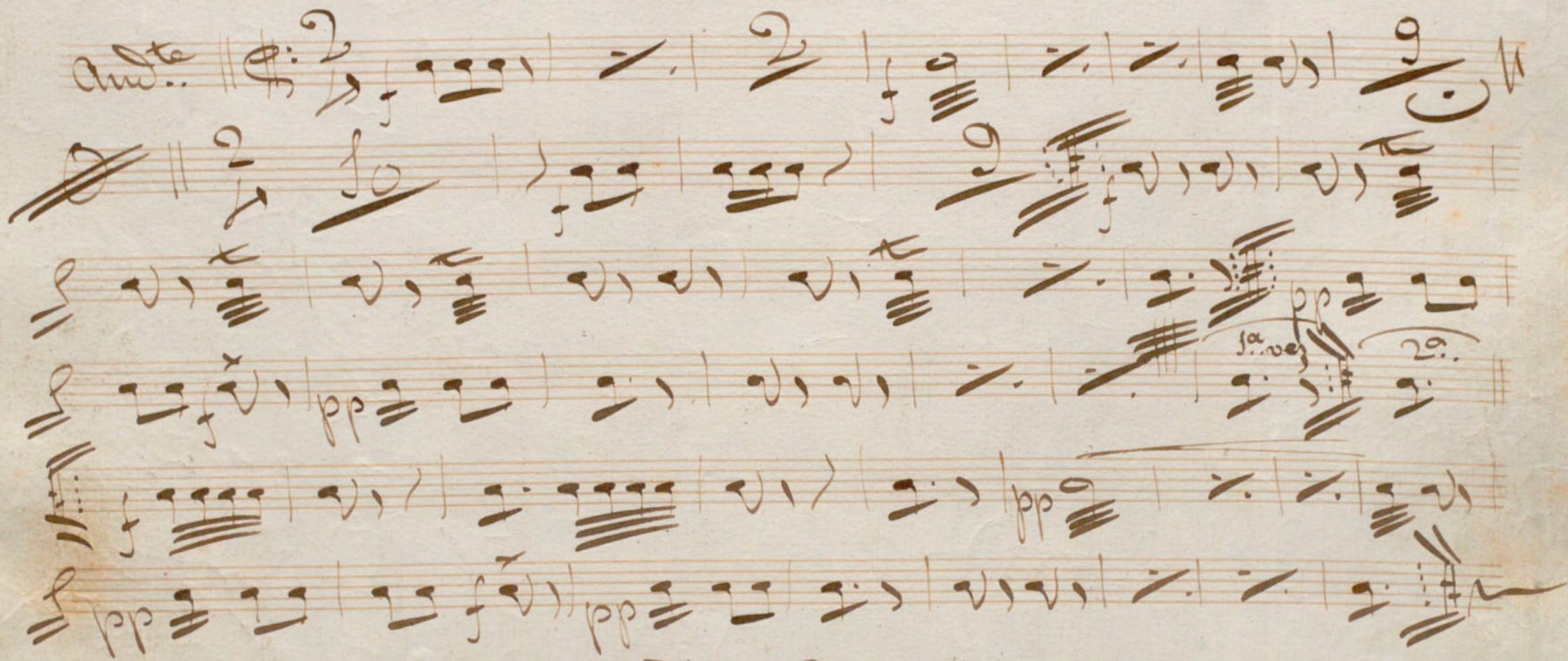
Coda *Morru* 

La Mina.

Polka.

Fambores.

Introd.

Andte || $\text{G:} \frac{2}{4}$ 

Dal Dal $\text{G:} \frac{2}{4}$ *y ligue*

Coda || *Mosso* 