



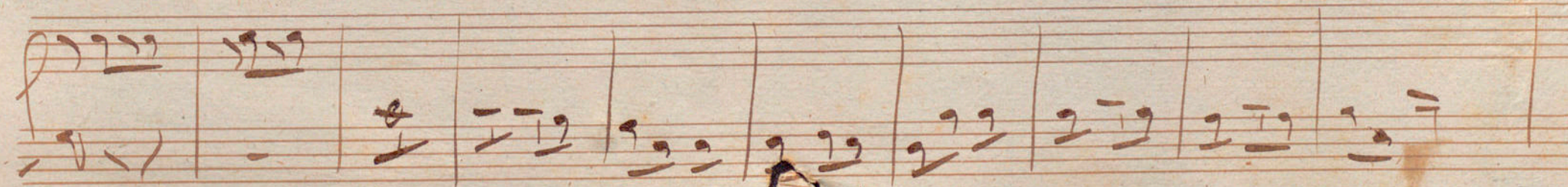
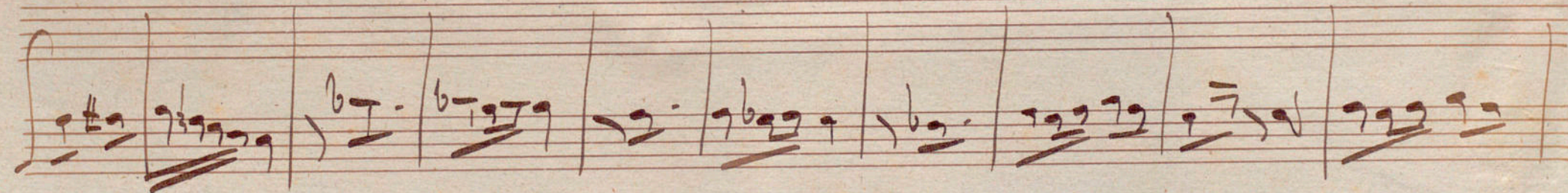
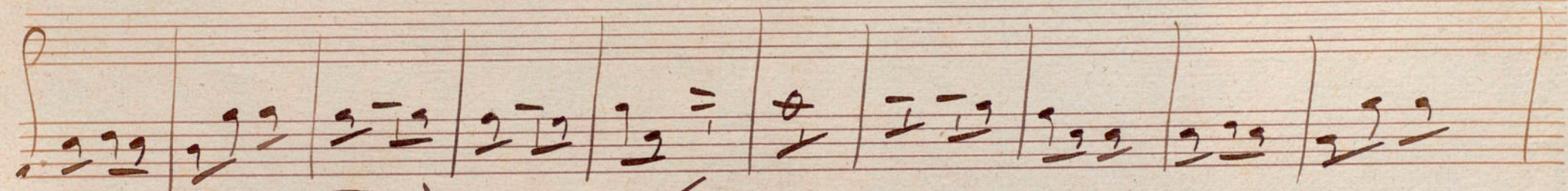
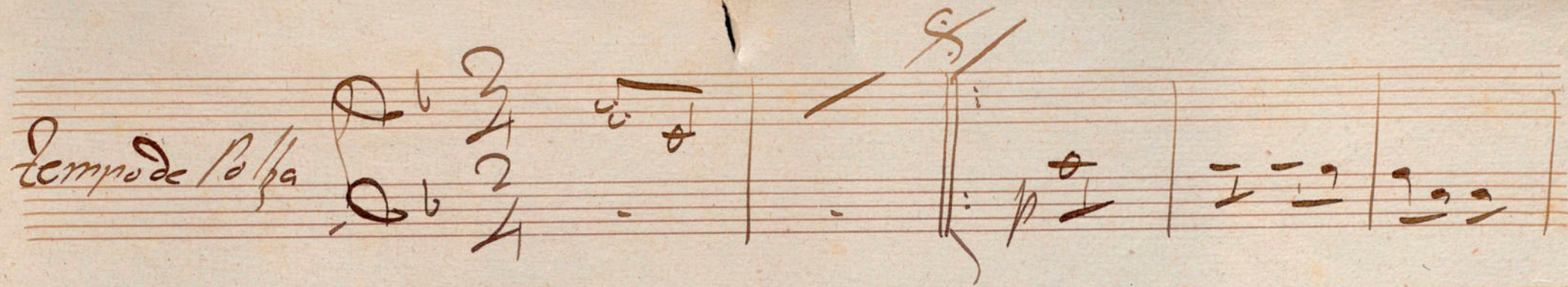
Violin Principal.

Potka L'Enclume

Parlow

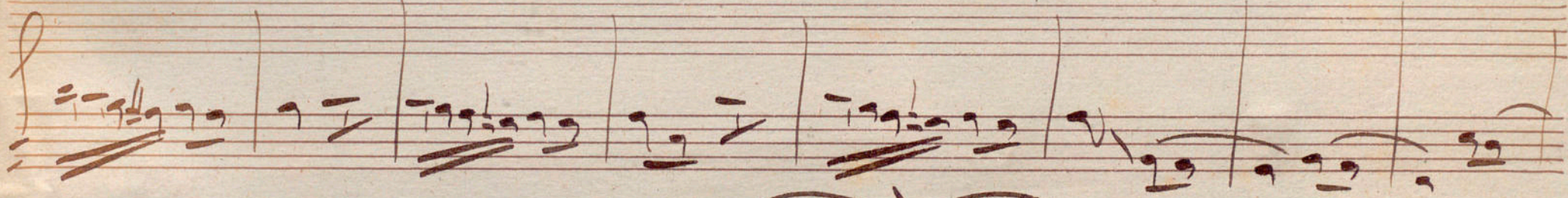
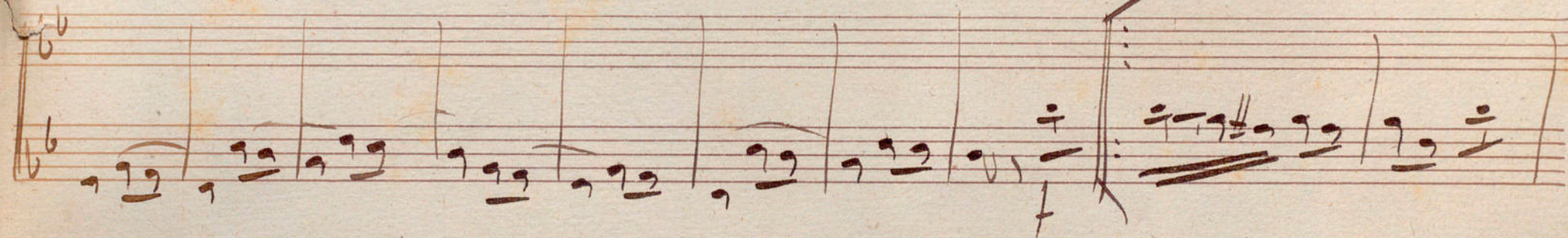
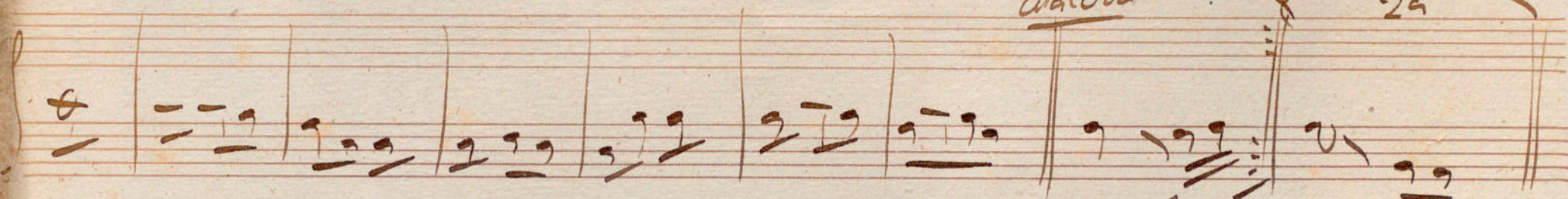
41053

Tempo de Polka



Alcoda lavz

2a

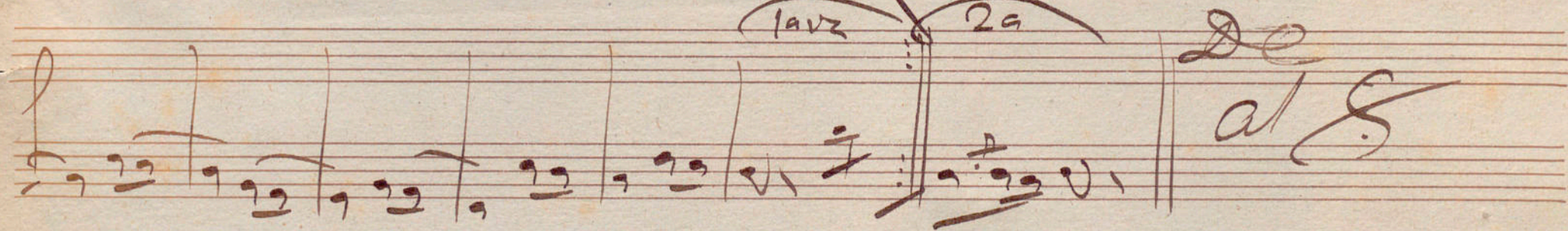


lavz

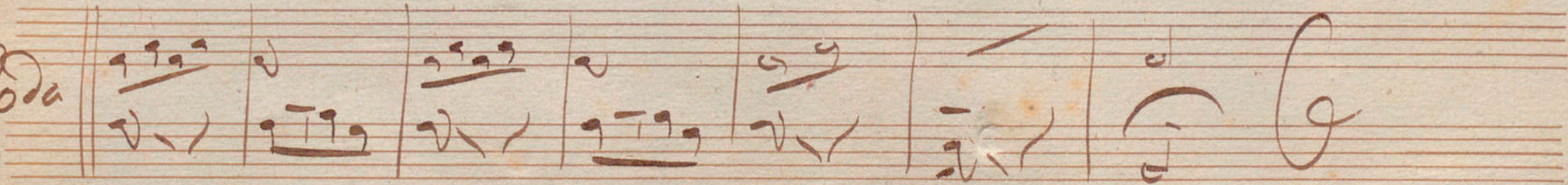
2a

De

al 8



Roda



419

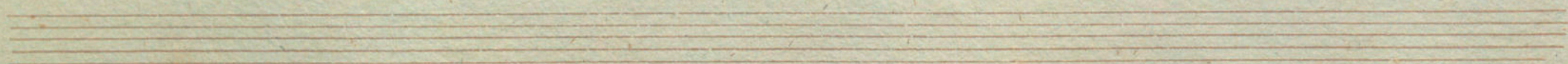
6

Violin 1^o

Polka

Linchime.

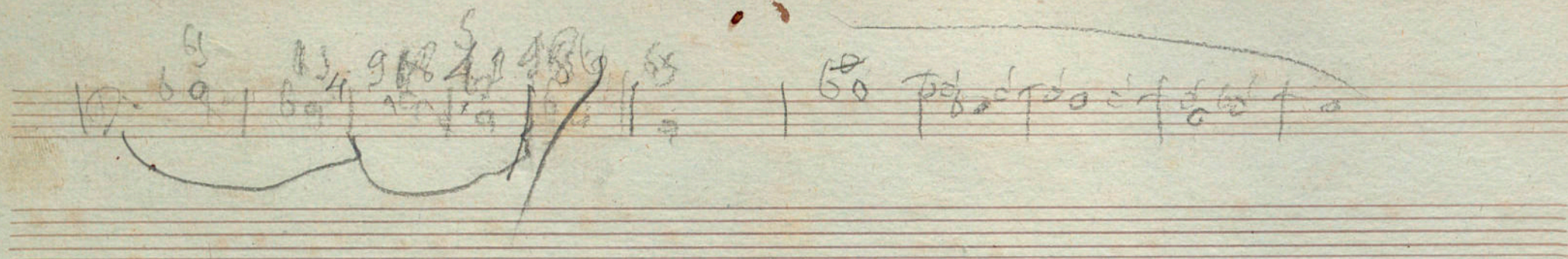
Handwritten musical score on seven staves. The notation includes various musical symbols such as clefs, time signatures (2/4), notes, rests, and dynamic markings (*f*, *ff*, *p*). The score is written in brown ink on aged paper. The first staff begins with a treble clef, a key signature of one flat, and a 2/4 time signature. The notation is dense, featuring many beamed notes and rests. The piece concludes with a double bar line on the seventh staff.



Handwritten musical score on a single page, featuring six staves of music. The notation includes various notes, rests, and dynamic markings. The score is divided into sections by double bar lines and includes the following annotations:

- 1^a** and **2^a** markings above the first two staves.
- f** (forte) and **arco** markings on the first staff.
- Tria** marking above the second staff.
- Coda** marking above the third staff.
- 1^a** and **2^a** markings above the fourth staff.
- Coda.** marking above the fifth staff.
- Al** (Allegro) marking below the fifth staff.
- A **Coda** symbol (a box with four diagonal lines) at the end of the first staff.

The bottom of the page contains three empty staves.



Violin 2^o

Polka

Enchume.

„Polka“

„L'enchûme“

Violin 2^o

Handwritten musical score for Violin 2, featuring two pieces: "Polka" and "L'enchûme". The score is written on seven staves. The first staff begins with a treble clef, a key signature of one flat (B-flat), and a 2/4 time signature. The first piece, "Polka", is marked with a repeat sign and a 2/4 time signature. The second piece, "L'enchûme", is marked with a repeat sign and a 2/4 time signature. The score includes various musical notations such as notes, rests, and dynamic markings like *p* (piano) and *f* (forte). A section of the score is marked "divisi" and includes first and second endings, indicated by "1^a" and "2^a". The notation is in brown ink on aged paper.

Handwritten musical score on a single page. The score is written on five staves. The top staff contains a melodic line with a *Coda* marking at the end. The second staff features a *Trio.* marking and includes first and second endings, labeled *1^a* and *2^a*. The third and fourth staves contain complex harmonic textures with many beamed notes. The fifth staff concludes with a *D.C. al Fine* instruction. The notation is in brown ink on aged paper.

A second section of handwritten musical notation at the bottom of the page. It begins with a *Coda* marking followed by a double bar line and a key signature change to one sharp (F#). The notation continues on two staves, featuring a melodic line and a bass line with a 4/4 time signature. The page ends with a large, decorative flourish.

Viola.

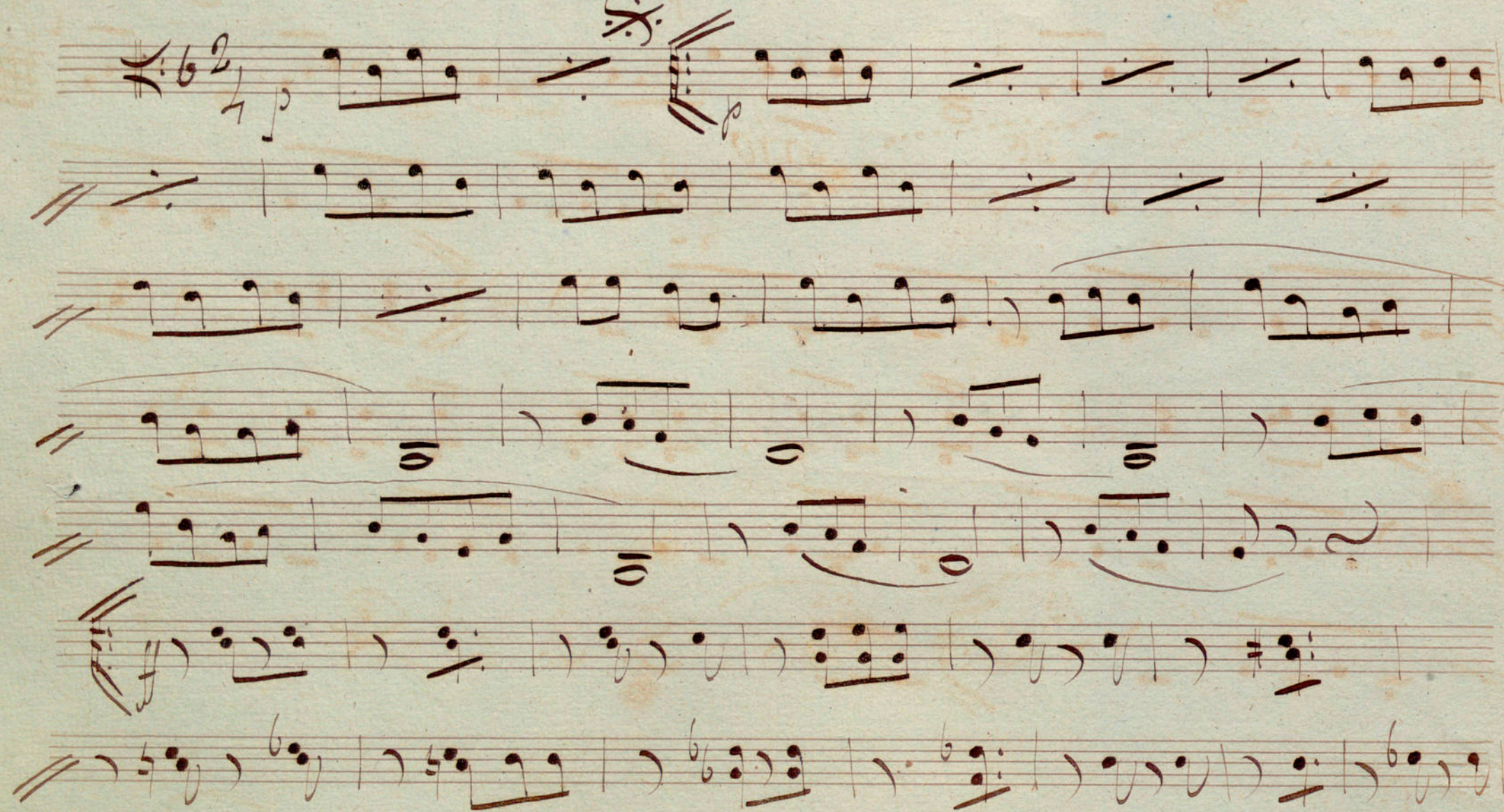
Polka

L'enchime.

„Polka“

„L'enchume“

Viola.



Handwritten musical score on ten staves. The notation includes various notes, rests, and dynamic markings. The word "Trio" is written in the middle of the score, and "Coda" appears at the end of the first system. The score is written in brown ink on aged paper.

1^a 2^a Trio 66

1^a 2^a D. C. al-F.

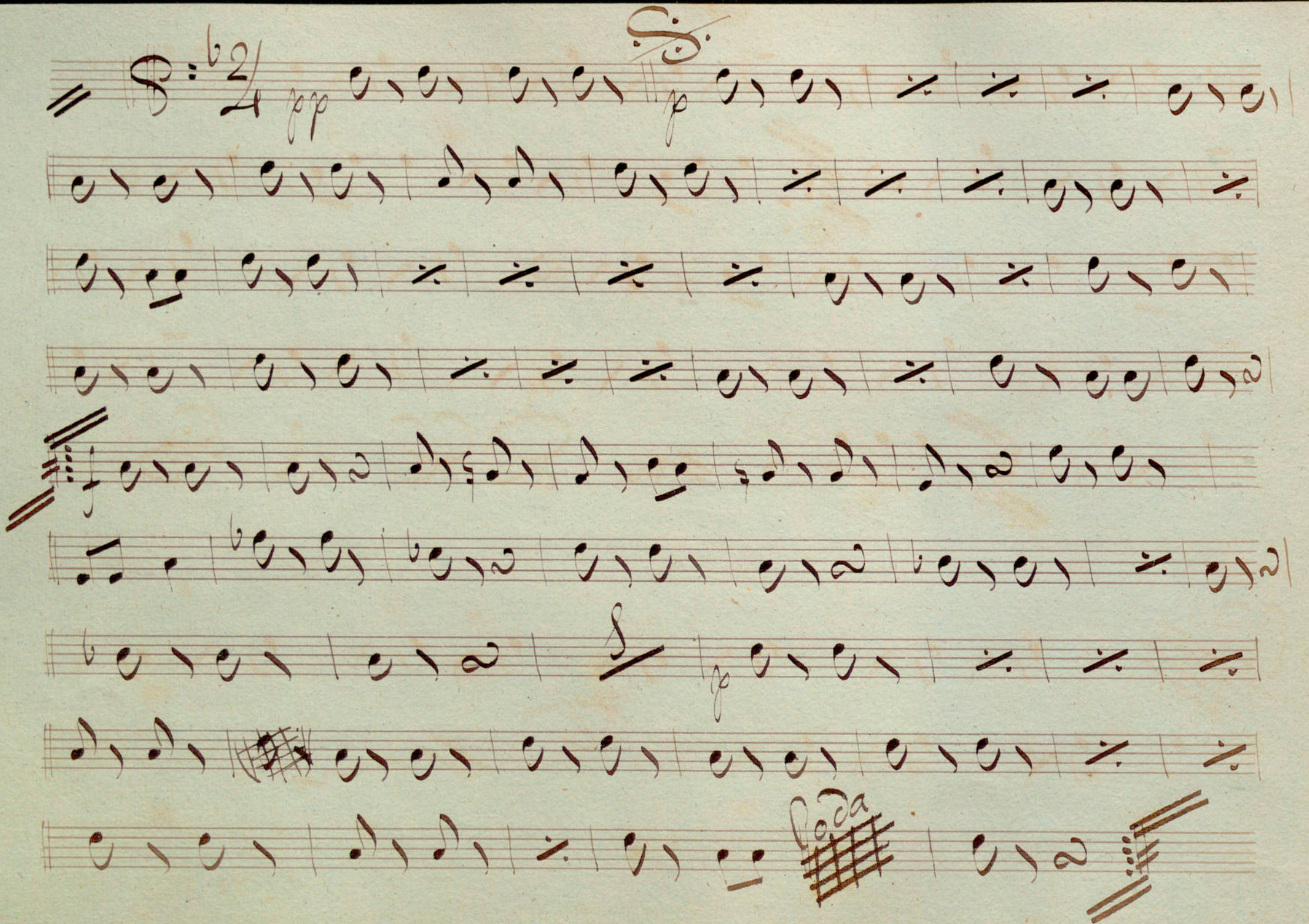
Coda

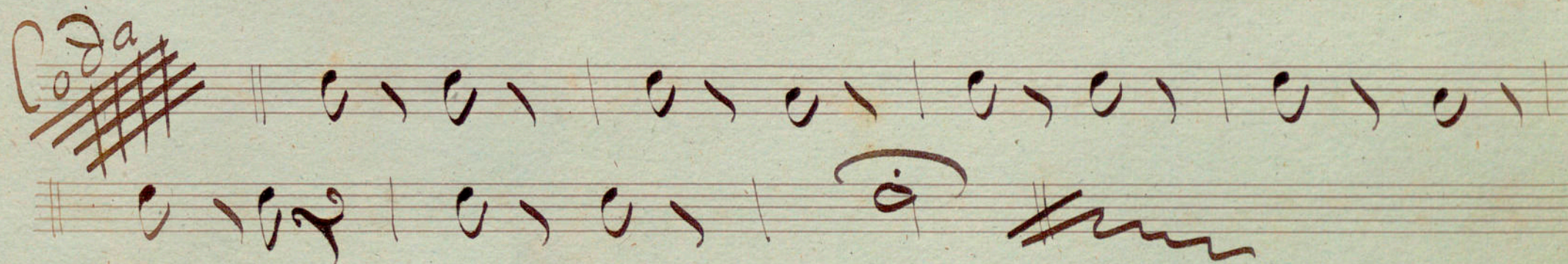
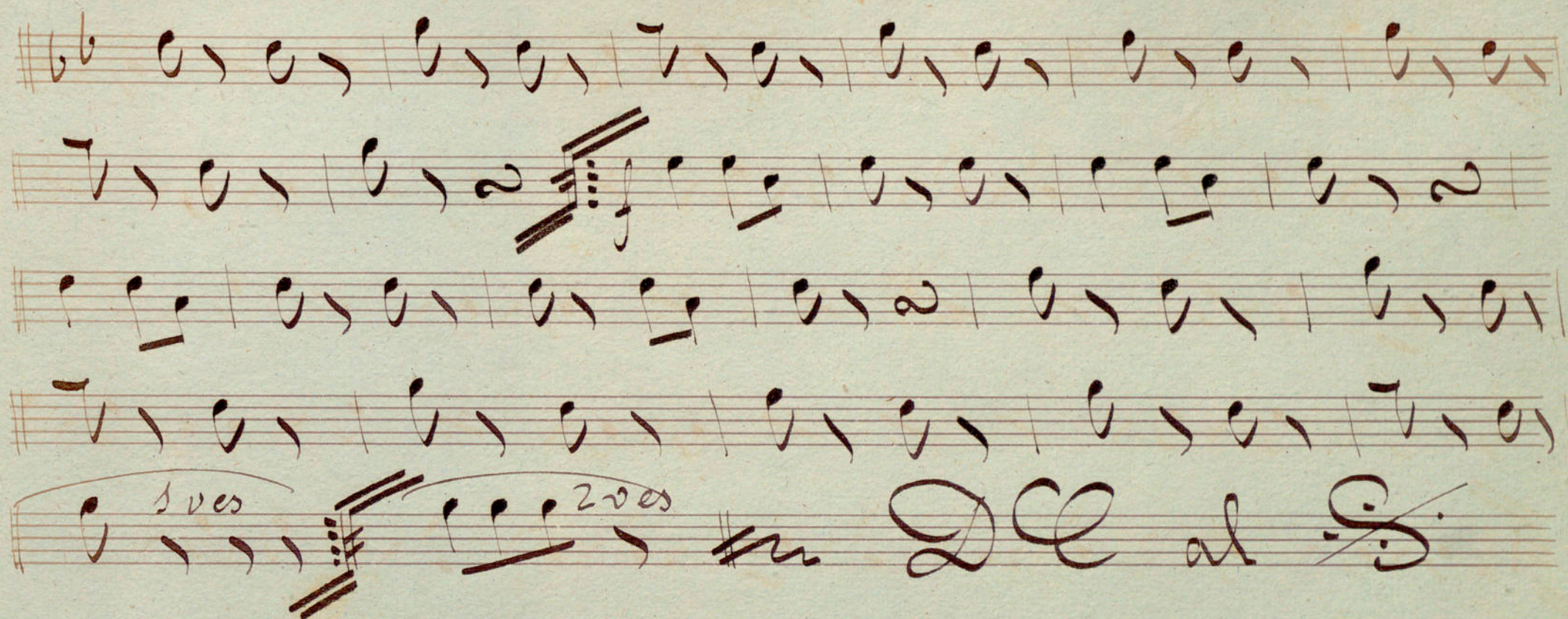
Handwritten musical notation for the Coda section, consisting of a single staff with a series of notes and a final double bar line.

Basso

Soltra // Enchune







Flauto.

Polka. — Conchune.

Handwritten musical score on eight staves. The notation includes treble and bass clefs, a key signature of one flat (B-flat), and a time signature of 2/4. The score features various musical notations such as notes, rests, and accidentals. A large, stylized initial 'S' is written at the top center. The notation is written in brown ink on aged paper.

Key markings and annotations include:

- 1a vez** (First time) and **2a vez** (Second time) written above a bracketed section on the fourth staff.
- 8a** (Eighth time) written below the first staff.
- loco** (Ad libitum) written below the fifth staff.
- p** (piano) dynamic markings are present below the sixth and seventh staves.
- A** (Allegro) tempo markings are present above the sixth and seventh staves.

The score concludes with a double bar line on the eighth staff.

Handwritten musical score on aged paper, featuring multiple staves and various musical notations.

The score includes the following sections and markings:

- Top Staff:** A melodic line with notes and rests, ending with a double bar line and the handwritten text "ala Coda".
- Second Staff:** Features a first ending bracket labeled "1a" and a second ending bracket labeled "2a". It includes a section marked "Trio" with a key signature change to two flats (B-flat and E-flat).
- Third Staff:** Continues the musical notation with various note values and rests.
- Fourth Staff:** Includes a large, ornate initial letter "A" at the beginning of a section.
- Fifth Staff:** Continues the musical notation with various note values and rests.
- Sixth Staff:** Includes a first ending bracket labeled "1a" and a second ending bracket labeled "2a". It ends with a double bar line and a key signature change to one flat (F).
- Seventh Staff:** Labeled "Coda" at the beginning, followed by musical notation and a double bar line.

The notation includes various note values (quarter, eighth, sixteenth notes), rests, and dynamic markings such as *p* (piano) and *f* (forte). The paper shows signs of age, including discoloration and some staining.

Polka

Clarinettes 1^{es}

Enclume

Polka

Enclume

Clarinete 1^{re}

Si^b

Handwritten musical score for Clarinet 1st part. The score is written on eight staves. The first staff begins with a treble clef, a key signature of one flat (B-flat), and a 2/4 time signature. The music is written in a cursive, handwritten style. The first section is labeled 'Polka' and the second section is labeled 'Enclume'. The score includes various musical notations such as notes, rests, and bar lines. The final staff of the piece ends with a double bar line and a repeat sign.

à la Cora #

1^{re} vez 2^{de} vez Trio

D. C. al

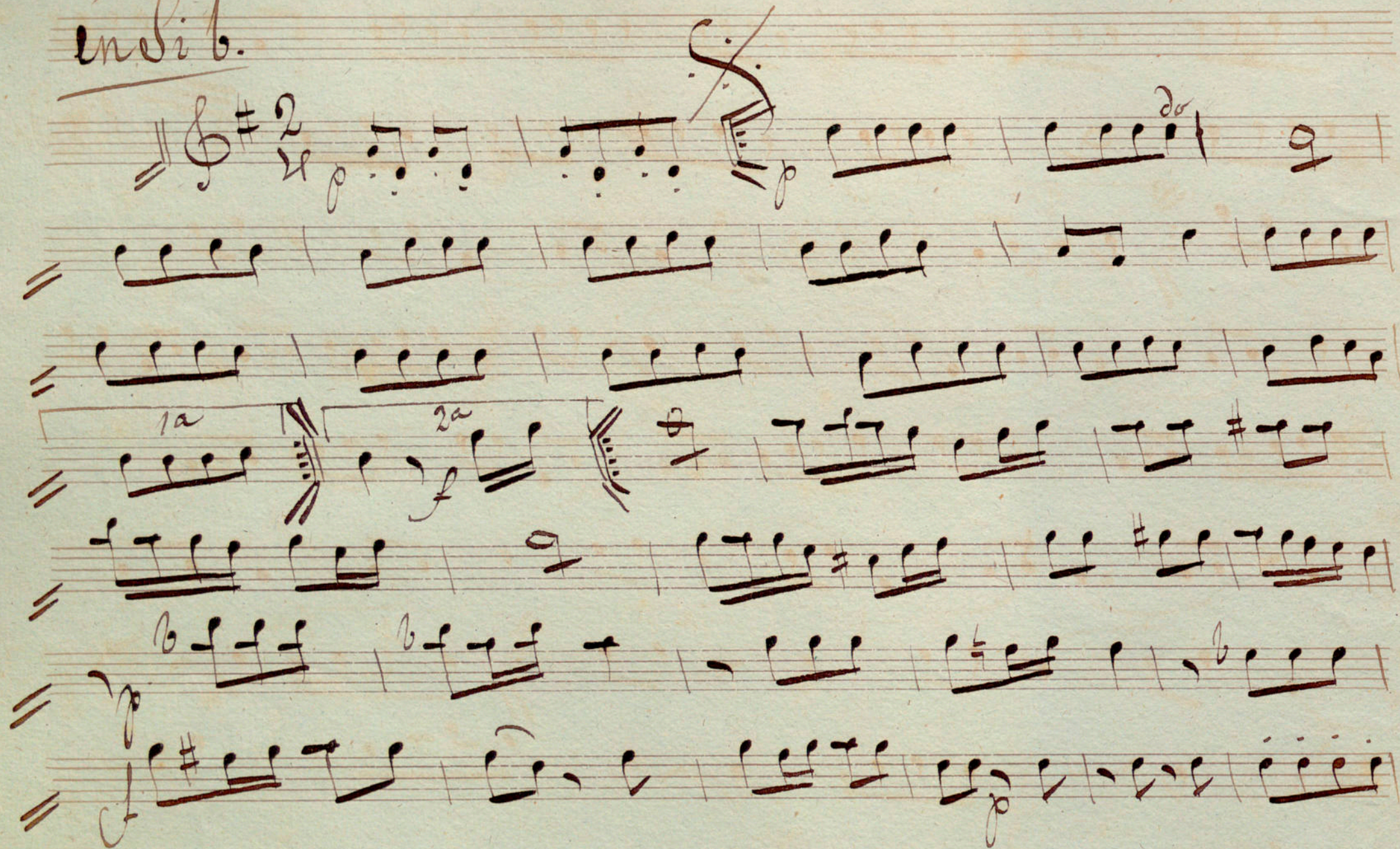
Cora

Clarinete 2^o

Polka.

Enchume.

And. b.



A handwritten musical score on ten staves. The notation includes various musical symbols such as notes, rests, and clefs. The score is written in brown ink on aged, slightly stained paper. The first staff begins with a double bar line and a key signature of one sharp (F#). The second staff ends with the handwritten text "a la coda". The third staff has "1a" and "2a" written above it, followed by a double bar line and the word "Trio". The fourth staff ends with a double bar line and a key signature change to one flat (Bb). The fifth staff begins with a double bar line and a key signature change to one sharp (F#). The sixth staff ends with a double bar line and a key signature change to one flat (Bb). The seventh staff has "1a" and "2a" written above it, followed by a double bar line and the word "Coda". The eighth staff begins with the word "Coda" and a double bar line. The ninth staff ends with a double bar line and a key signature change to one sharp (F#). The tenth staff begins with a double bar line and a key signature change to one flat (Bb).

Handwritten musical score on ten staves. The notation includes various musical symbols such as notes, rests, and clefs. The score is written in brown ink on aged, slightly stained paper. The first staff begins with a double bar line and a key signature of one sharp (F#). The second staff ends with the handwritten text "a la coda". The third staff has "1a" and "2a" written above it, followed by a double bar line and the word "Trio". The fourth staff ends with a double bar line and a key signature change to one flat (Bb). The fifth staff begins with a double bar line and a key signature change to one sharp (F#). The sixth staff ends with a double bar line and a key signature change to one flat (Bb). The seventh staff has "1a" and "2a" written above it, followed by a double bar line and the word "Coda". The eighth staff begins with the word "Coda" and a double bar line. The ninth staff ends with a double bar line and a key signature change to one sharp (F#). The tenth staff begins with a double bar line and a key signature change to one flat (Bb).

Polka,

Cornos.

Enclume,

Polka *Inclume*

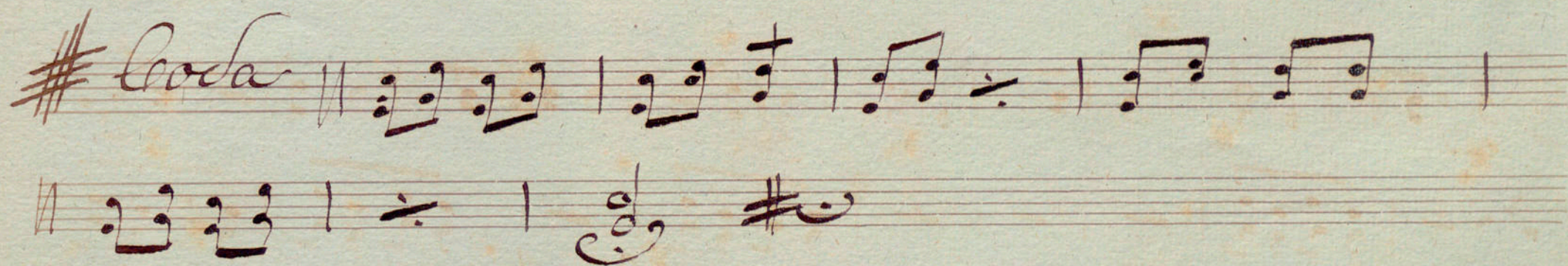
Cornis.

Fa

Handwritten musical score for Cornis, featuring a Polka Inclume. The score is written on eight staves. The first staff begins with a treble clef, a key signature of one flat (B-flat), and a 2/4 time signature. The music consists of eighth and sixteenth notes, with some measures containing rests. The second staff continues the melody. The third staff includes a section marked "1. vez" and "2. vez" with a repeat sign. The fourth staff continues the melody. The fifth staff includes a section marked "à la coda" with a key signature change to two sharps (F# and C#) and a repeat sign. The sixth staff continues the melody. The seventh staff includes a section marked "1. vez" and "2. vez" with a repeat sign. The eighth staff concludes the piece.



D. C. al F



Piston 1^o

Polka L'Enclume

Sib.

Polka.

Enchume.

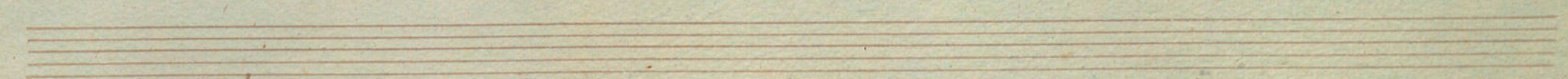
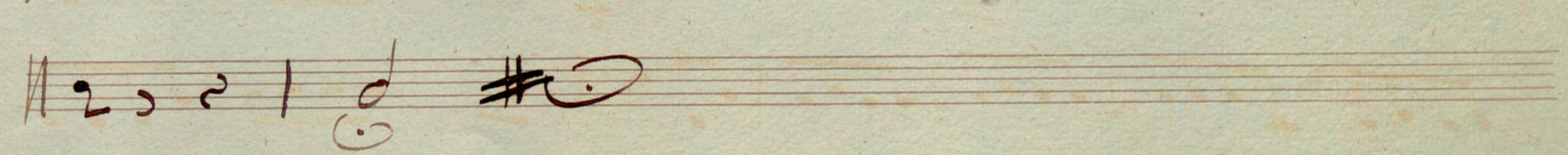
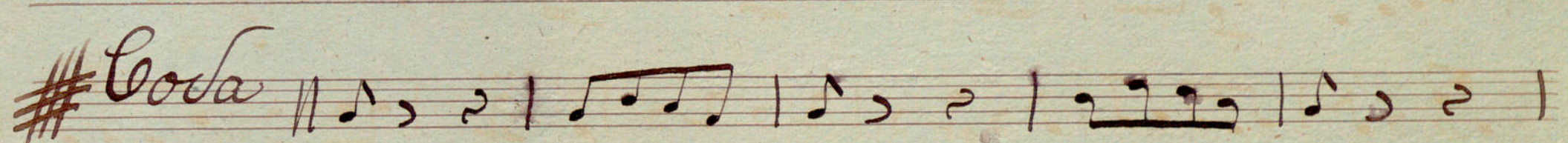
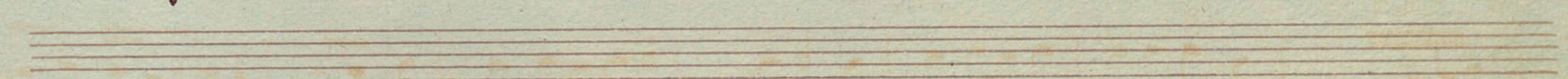
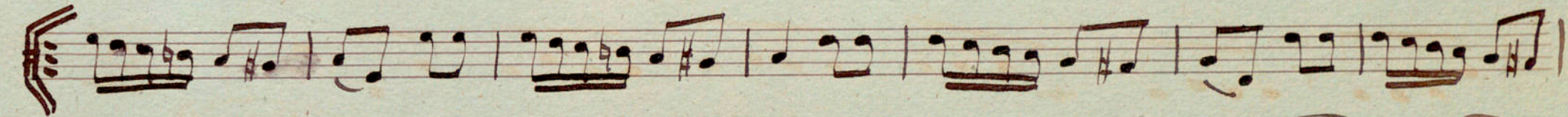
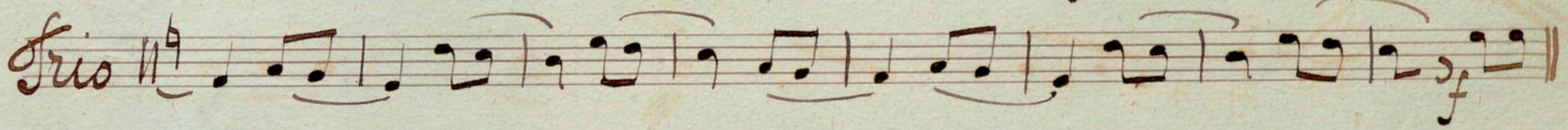
1er Piston.

Handwritten musical score for 1st Piston, featuring a Polka and Enchume section. The score is written on seven staves. The first staff begins with a treble clef, a key signature of one sharp (F#), and a 2/4 time signature. The music consists of eighth and sixteenth notes, with some measures containing rests. A large, stylized 'S' or 'X' mark is written over the first staff. The second staff continues the melody. The third staff features a double bar line and a key signature change to one flat (Bb). The fourth staff includes a double bar line and a key signature change to one sharp (F#). The fifth staff continues the melody. The sixth staff features a double bar line and a key signature change to one flat (Bb). The seventh staff continues the melody. The score concludes with a double bar line and a key signature change to one sharp (F#).

à la Colas

1^a vez

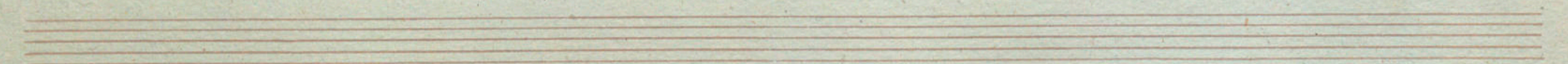
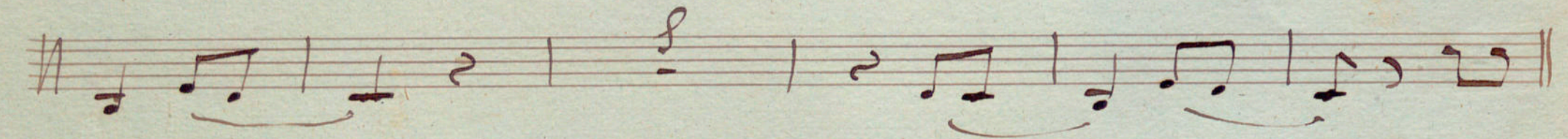
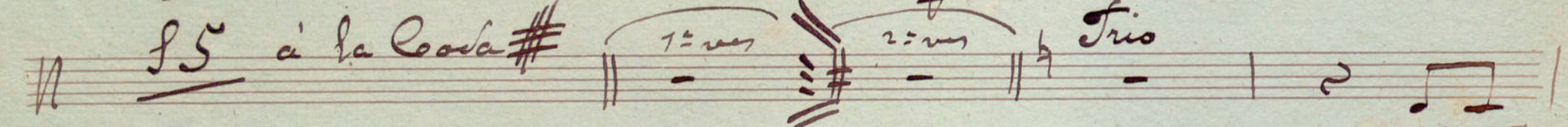
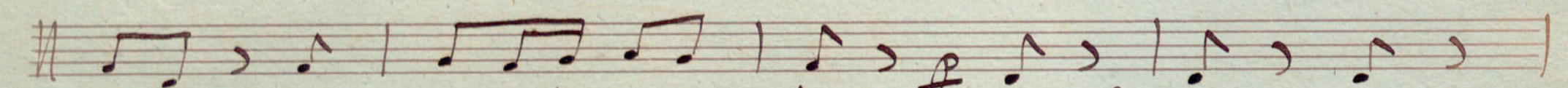
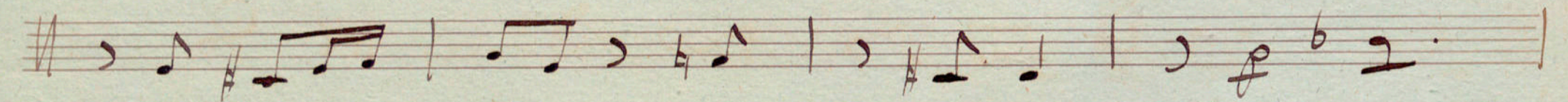
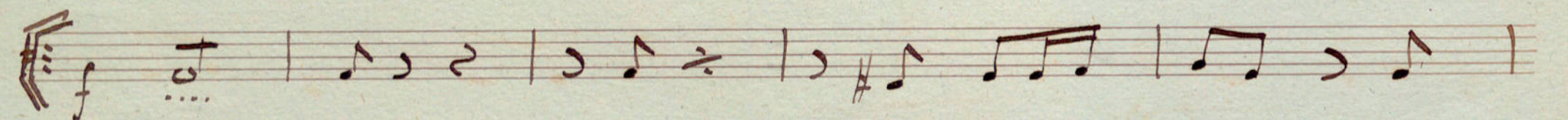
2^a Solo vez

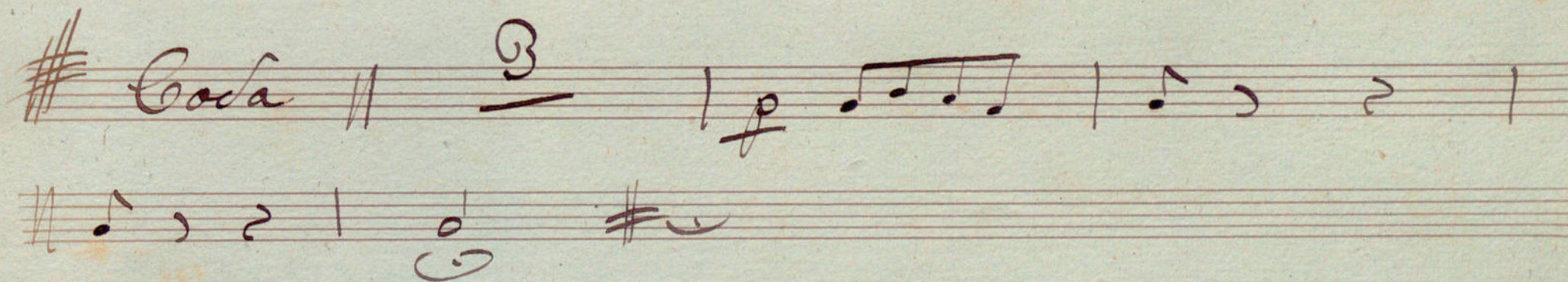
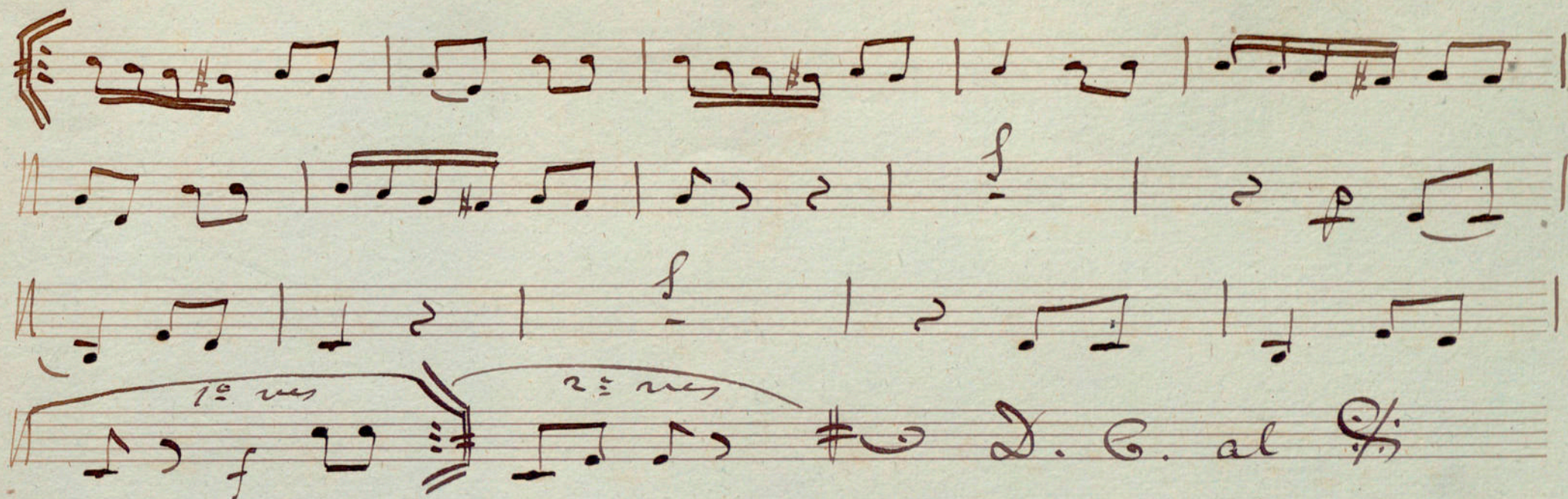


Piston Q.

Pelza L'Enclume

Si b. Polka Enclume 2^e Piston





Solha = Enclume //

Trombon *S^{mo}* //

Handwritten musical score for Solha = Enclume and Trombon *S^{mo}*. The score is written on six staves. The first staff begins with a treble clef, a key signature of one flat (B-flat), and a time signature of 2/4. The tempo/mood is marked *pp* (pianissimo). The notation consists of rhythmic patterns using vertical strokes with flags, some with beams, and rests. There are several double bar lines and repeat signs. A section marked *S⁶* begins on the third staff. A section marked *S⁵ Coda* begins on the fifth staff. The score concludes with a section marked *Al S.* and a final *Coda* section marked with a double bar line and a repeat sign.

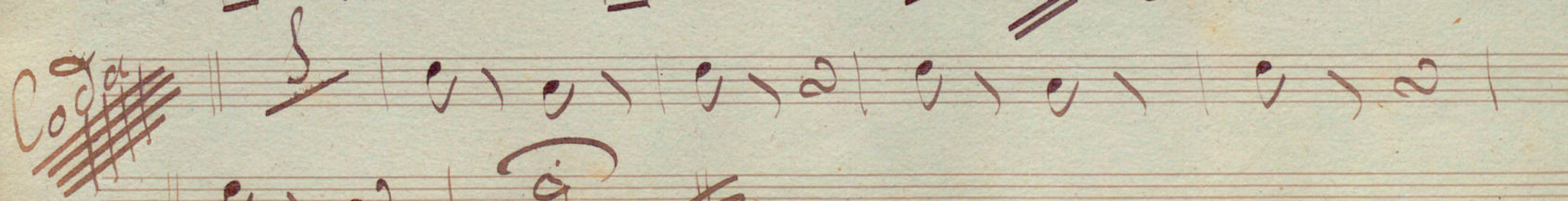
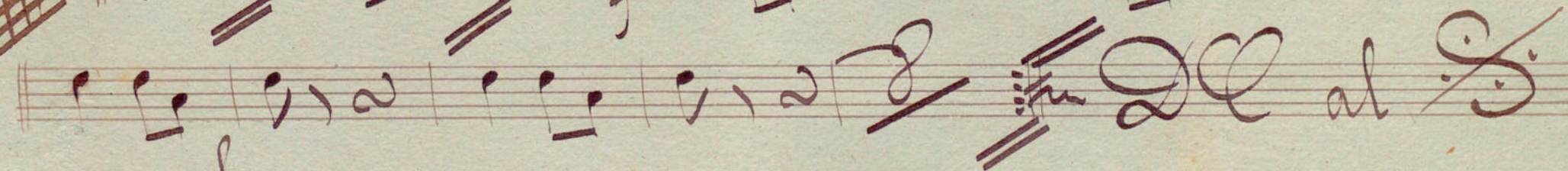
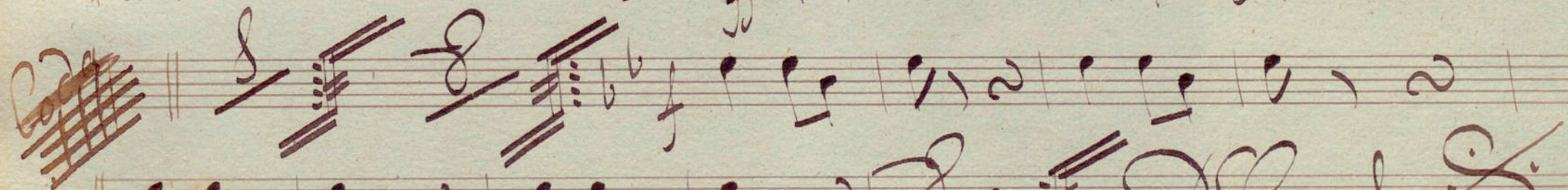
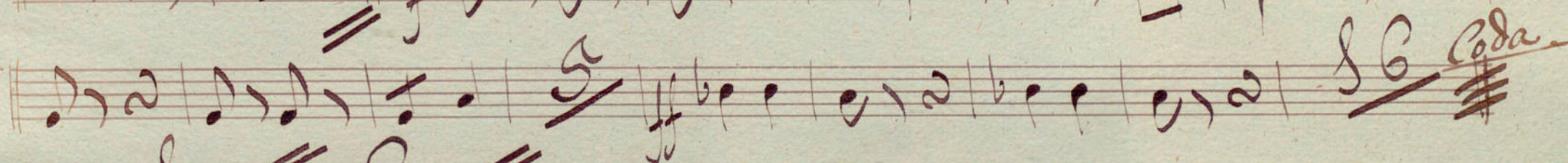
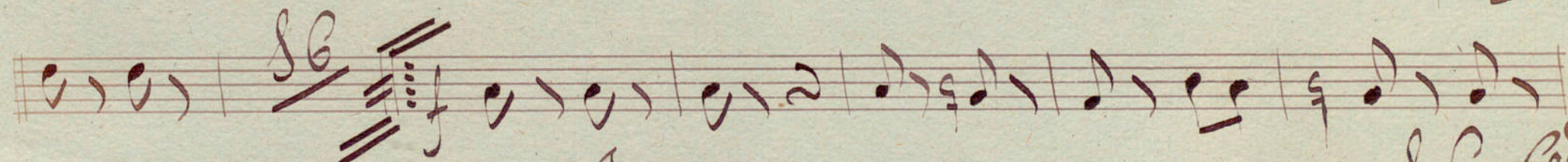
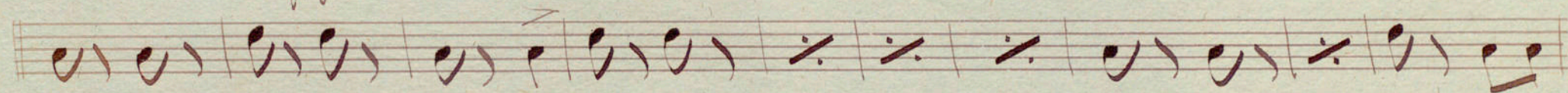
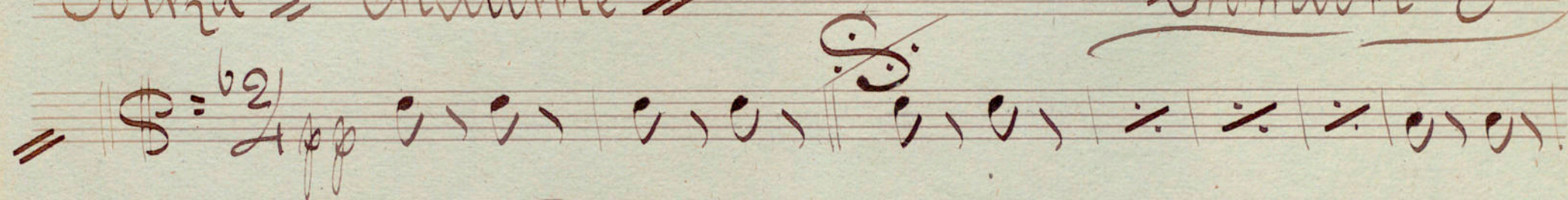
Solka - Enchume

Tranlon 2^{do}

Handwritten musical score for Solka - Enchume and Tranlon 2^{do}. The score is written on seven staves. The first staff begins with a treble clef, a key signature of one flat (B-flat), and a 2/4 time signature. The notation includes various musical symbols such as notes, rests, and dynamic markings like *App* and *vis*. There are several double bar lines and repeat signs throughout the piece. The score concludes with a *Coda* section marked by a double bar line and a key signature change to three sharps (F#, C#, G#).

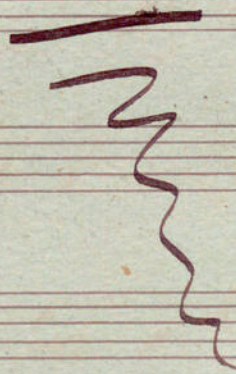
Solha = Enchume //

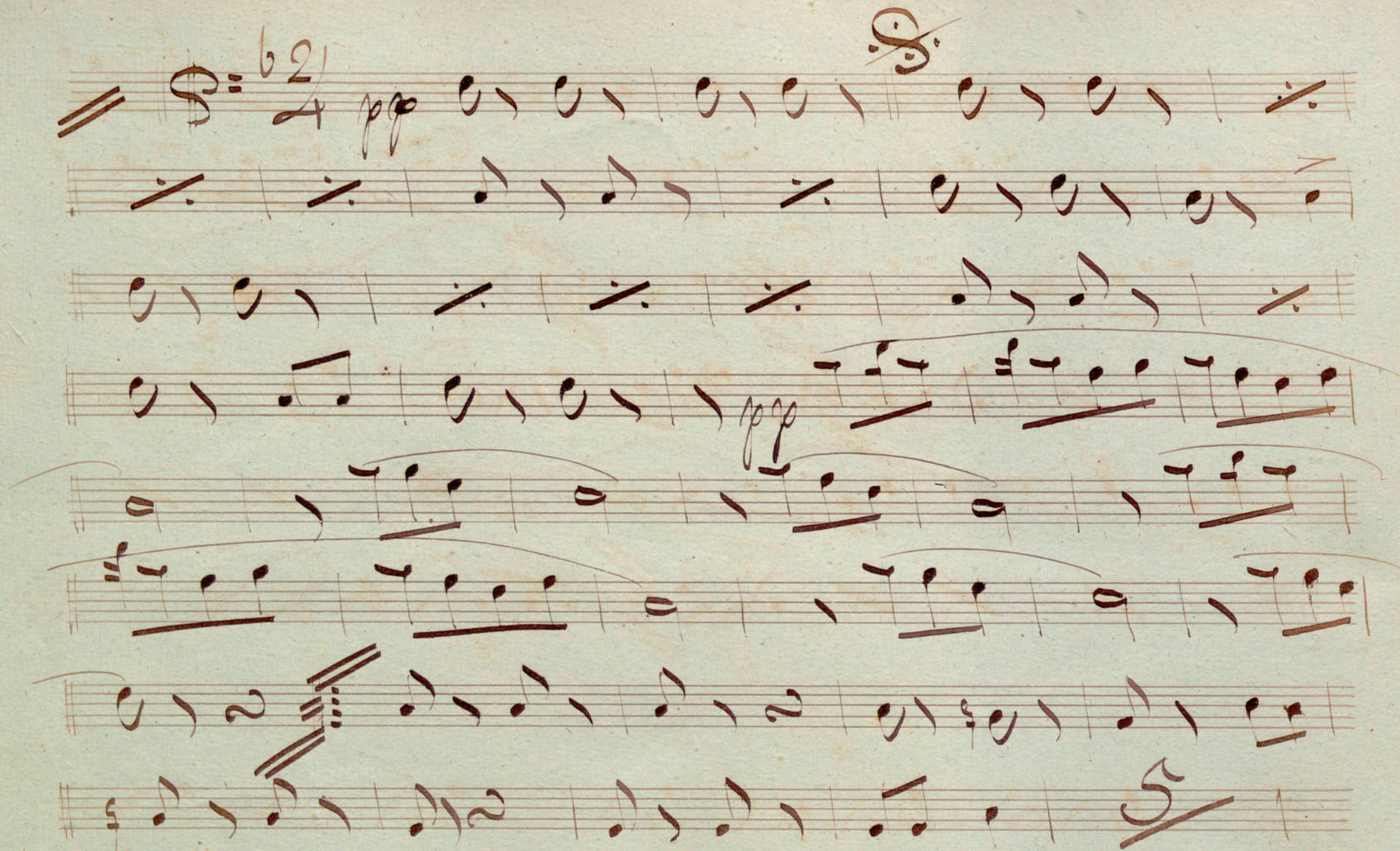
Trombon 3^{ro}



F. Scornano

Soltra = Enclume





Handwritten musical score on six staves. The notation includes various notes, rests, and dynamic markings. The first staff begins with a double bar line and a key signature of one sharp (F#). The second staff contains a double bar line and a key signature change to one flat (Bb). The third staff features a double bar line and a key signature change to two flats (Bb, Eb). The fourth staff contains a double bar line and a key signature change to two sharps (F#, C#). The fifth staff contains a double bar line and a key signature change to one sharp (F#). The sixth staff contains a double bar line and a key signature change to one flat (Bb). The score concludes with the text "D.C. al S." and a double bar line.

Handwritten musical score on six staves. The notation includes various notes, rests, and dynamic markings. The first staff begins with a double bar line and a key signature of one sharp (F#). The second staff contains a double bar line and a key signature change to one flat (Bb). The third staff features a double bar line and a key signature change to two flats (Bb, Eb). The fourth staff contains a double bar line and a key signature change to two sharps (F#, C#). The fifth staff contains a double bar line and a key signature change to one sharp (F#). The sixth staff contains a double bar line and a key signature change to one flat (Bb). The score concludes with the text "D.C. al S." and a double bar line.

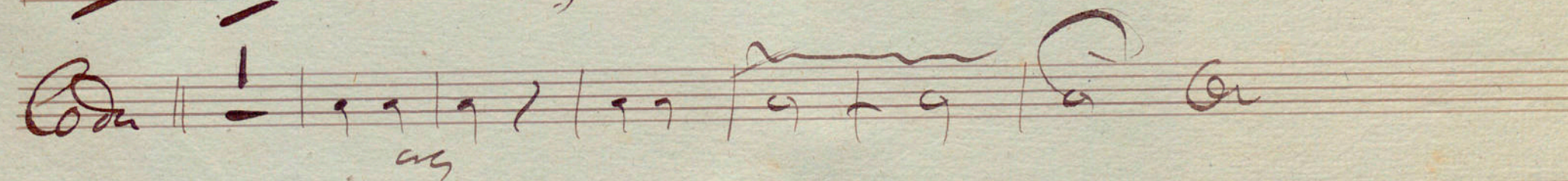
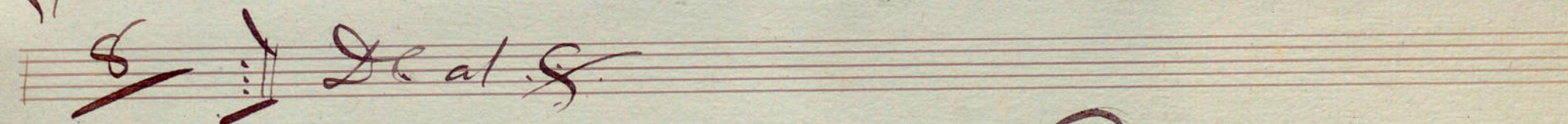
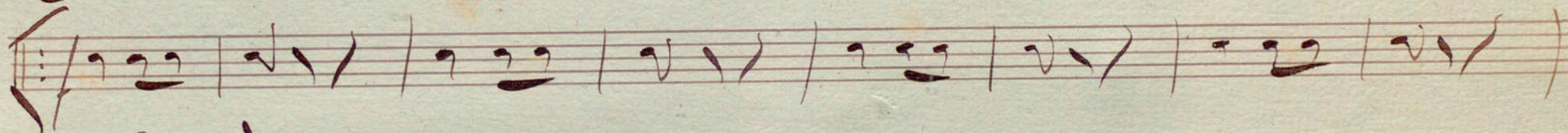
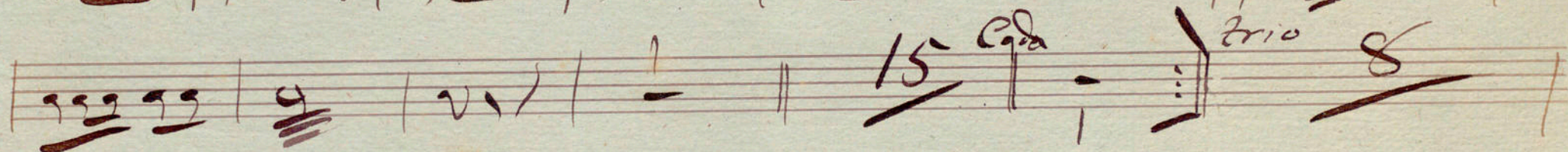
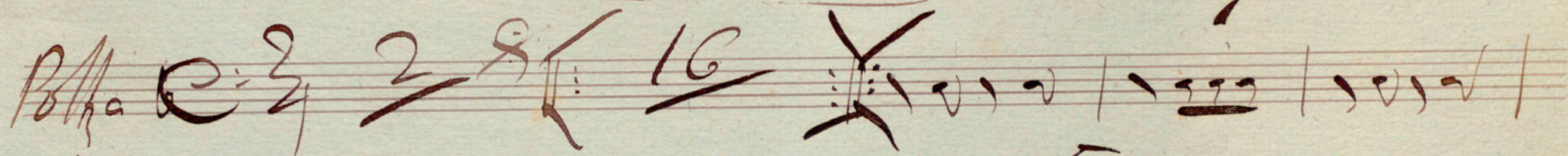
Handwritten musical score on two staves. The notation includes various notes, rests, and dynamic markings. The first staff begins with a double bar line and a key signature of one sharp (F#). The second staff contains a double bar line and a key signature change to one flat (Bb). The score concludes with a double bar line.

Handwritten musical score on two staves. The notation includes various notes, rests, and dynamic markings. The first staff begins with a double bar line and a key signature of one sharp (F#). The second staff contains a double bar line and a key signature change to one flat (Bb). The score concludes with a double bar line.

Polka

L'Enclume

Cajás



Poffa

L' Enclume

Enclusa

Poffa *E* *2* *1* *2* *3* *4* *5* *6*

7 *8* *9* *10* *11* *12* *13* *14* *15* *Infon*

2evz *17* *1* *2* *3* *4* *5* *6*

7 *8* *9* *10* *11* *12* *13* *14* *15* *Coda*

8 *16* *Deal* *8*

Coda *1* *2* *3* *4* *5* *6*

