

~~23~~

25

Violino Principi

Polka

La Lila

March

23.

No. 23

This image shows a page of handwritten musical notation on aged, yellowed paper. The score consists of ten staves of music, written in brown ink. The notation includes treble clefs, a key signature of three sharps (F#, C#, G#), and a time signature of 2/4. The music is characterized by frequent double and triple slurs, indicating rapid passages or ornaments. The notation is dense and somewhat irregular, typical of a working draft or a composer's sketch. The paper shows signs of wear, including creases and discoloration, particularly on the right side.

Staccato

And. *Pitton* *fl. Cla.* *Pitton* *fl. Cla.*

Pitton *marcato*

Pitton *fl. Cla.* *Pitton*

fl. *Pitton* *Coda*

D.C.

fllo

This is a page of handwritten musical notation on aged, yellowed paper. The score is written in brown ink and consists of several systems of staves. The top system includes markings for 'And.', 'Pitton', 'fl. Cla.', and 'Pitton'. The second system features 'Pitton' and 'marcato'. The third system has 'Pitton', 'fl. Cla.', and 'Pitton'. The fourth system includes 'fl.', 'Pitton', and 'Coda'. The fifth system contains 'D.C.'. The bottom system has 'fllo'. The notation includes various note values, rests, and dynamic markings. The paper shows signs of wear, including a tear on the left edge and some foxing.

Polka

La Lila

Violino I^{mo}

Handwritten musical score for Violino I, titled "Polka La Lila". The score consists of ten staves of music in treble clef with a key signature of three sharps (F#, C#, G#) and a 2/4 time signature. The notation includes various rhythmic patterns, slurs, and dynamic markings such as "f" and "fin". The piece concludes with a double bar line and the instruction "D.C. y sigue Coda".

Handwritten musical notation on three staves. The notation is in brown ink on aged, yellowed paper. The top staff begins with a treble clef and a key signature of one sharp (F#). The music consists of several measures, each containing dense, rhythmic patterns of notes and rests. The second and third staves continue the musical composition with similar dense notation. The paper shows signs of age, including foxing and some staining.

Seven blank musical staves, each consisting of five horizontal lines. These staves are positioned below the first three staves and are completely empty of any musical notation or markings.

Polka

La Lita

Violino 2^{do}

Handwritten musical score for Violino 2^{do}, Polka La Lita. The score consists of ten staves of music in treble clef with a key signature of three sharps (F#, C#, G#) and a 2/4 time signature. The notation includes various rhythmic values, slurs, and dynamic markings such as 'p' and 'fin'. The piece concludes with a double bar line and the instruction 'D.C. y signe Coda'.

Coda $\sharp\sharp\sharp$

Polka.

La Lila

Basso

Handwritten musical score for Polka "La Lila" in Bass clef. The score consists of ten staves of music. The first staff includes a treble clef, a key signature of three sharps (F#, C#, G#), and a 2/4 time signature. The music is written in a cursive hand with various musical notations including notes, rests, slurs, and dynamic markings like "f" and "p". The piece concludes with a double bar line and the instruction "D.C. y sigue Coda".

Coda

Handwritten musical notation on three staves. The first staff begins with a treble clef, a key signature of two sharps (F# and C#), and a common time signature. It contains several measures of music with eighth and sixteenth notes, some beamed together, and rests. The second staff continues the notation with similar rhythmic patterns and rests. The third staff shows a few notes followed by a long, wavy line representing a rest or a specific musical effect. The paper is aged and shows some staining.

Seven empty musical staves on aged paper.

Polka. in La^b

La Lila.

Clarinetti 1^o & 2^o

This is a handwritten musical score for two clarinets, labeled 'Clarinetti 1^o & 2^o'. The score is written on ten staves. The first staff begins with a treble clef, a key signature of one flat (B-flat major), and a 2/4 time signature. The music is a polka, characterized by its rhythmic patterns and frequent use of slurs and ties. The piece is titled 'La Lila'. The notation includes various note values, rests, and dynamic markings such as 'f' (forte) and 'fin'. The handwriting is in brown ink on aged, slightly stained paper. The score concludes with a double bar line and a decorative flourish.

A.C.

Coda

Handwritten musical notation for the Coda section, consisting of three staves. The top staff contains a melodic line with various notes and rests. The middle staff contains a more complex melodic line with many beamed notes. The bottom staff contains a few notes and rests, including a measure with a '3' indicating a triplet.

Seven empty musical staves on the page.

Polka

La Lila

Hautin

1^o

Handwritten musical score for a piece titled "Polka La Lila" on "Hautin". The score is written on ten staves in treble clef, with a key signature of three sharps (F#, C#, G#) and a 2/4 time signature. The music is written in a cursive, handwritten style. It includes various musical notations such as notes, rests, beams, and slurs. There are dynamic markings like "p" (piano) and "f" (forte) scattered throughout. The piece concludes with a double bar line and a repeat sign. The paper shows signs of age, including some staining and foxing.

Coda

Handwritten musical notation for a Coda section, consisting of three staves. The first staff begins with a treble clef, a key signature of three sharps (F#, C#, G#), and a common time signature. It contains several measures of music with slurs and accents. The second staff continues the melodic line with similar notation. The third staff concludes the section with a double bar line, a fermata, and a final flourish. The word "Coda" is written in a decorative cursive script at the beginning of the first staff.

A series of seven empty musical staves, showing faint ghosting of the notation from the Coda section above.

Polka. in m³

La Lila

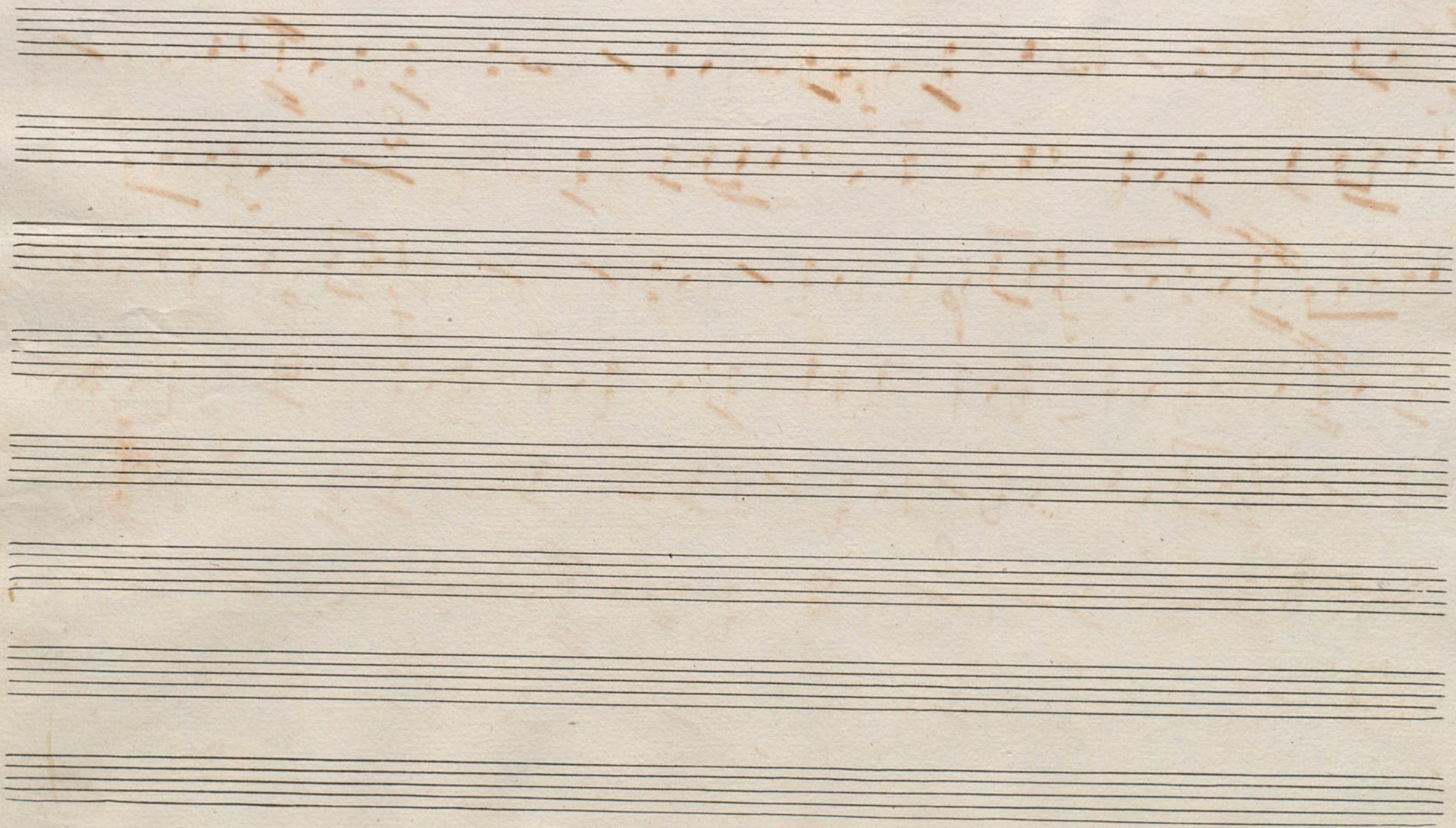
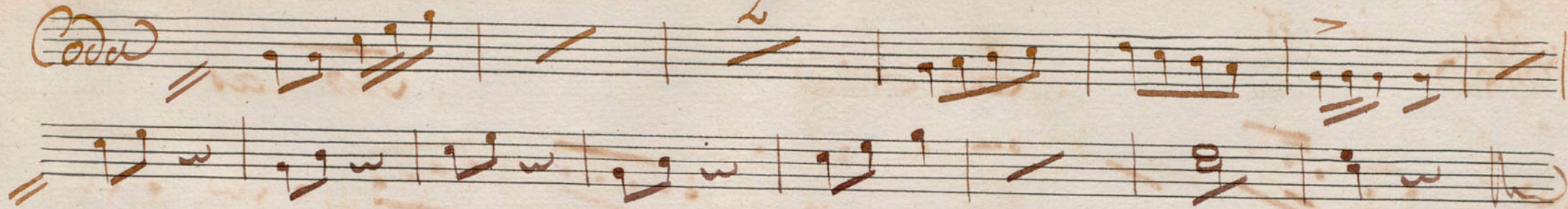
Trompas.

Handwritten musical score for Trompas, titled "Polka. in m³ La Lila". The score consists of ten staves of music. The first staff is a treble clef with a 2/4 time signature. The music is written in a single system. The notation includes various note values, rests, and dynamic markings such as "f" and "p". There are also some performance instructions like "2" and "f" written above the notes. The piece concludes with a double bar line and a "fini" marking.

J.C. signe Coda

Coda

2



Polka *in La* *Poco* *La Lila*

3 1 2 2^{da}

Piston 1^o

D. C. segue Coda

Coda

Handwritten musical notation for a Coda section, consisting of three staves. The first staff begins with a treble clef, a key signature of one sharp (F#), and a double bar line. It contains several measures of music with eighth and sixteenth notes, some with accents. The second staff continues the melody with similar note values and rests. The third staff features a bass clef and concludes with a double bar line and a fermata over the final note. The paper shows signs of age and some staining.

Potha. in mi³

La Lita.

Clarinet.

Handwritten musical score for Clarinet, measures 1-10. The music is written on a grand staff with a treble clef and a 2/4 time signature. The notation includes various rhythmic values, slurs, and dynamic markings such as *f* and *fin*. Measure numbers 1 through 10 are indicated below the staff.

Handwritten musical score for Coda, measures 11-15. The music is written on a grand staff with a treble clef and a 2/4 time signature. The notation includes various rhythmic values, slurs, and dynamic markings such as *f*. Measure numbers 11 through 15 are indicated below the staff. The word "Coda" is written at the beginning of the section.

Polka.

La Lila Capodexila Trombone 1^o

This is a handwritten musical score for the first trombone part of a piece titled "La Lila Capodexila". The score is written on ten staves. The first section is a Polka in 2/4 time, marked with a treble clef and a key signature of three sharps (F#, C#, G#). The music is characterized by rhythmic patterns, including eighth and sixteenth notes, and rests. There are several dynamic markings such as *f* (forte) and *p* (piano), and articulation marks like accents and slurs. A first ending bracket labeled "2" spans the final measures of the Polka section. The second section is a Coda, also in 2/4 time, marked with a treble clef and a key signature of three sharps. It consists of a few measures of music, ending with a double bar line and the initials "S.C.". The paper is aged and shows some wear, with a small number "1" in the top right corner.

Polka

La Lila

1 2^{da} 2 3^a
Trombone 2^{da} 3^{ra}

This is a handwritten musical score for two trombone parts, labeled '2da' and '3ra'. The piece is titled 'Polka' and 'La Lila'. The music is written on ten staves. The first staff begins with a treble clef, a key signature of two sharps (F# and C#), and a 2/4 time signature. The notation includes various rhythmic values such as eighth and sixteenth notes, rests, and dynamic markings like 'f' (forte). There are also performance instructions such as 'fin' and 'v.c.' (viva voce). The score concludes with a double bar line and a final cadence.

Polka

La Lila

Officier

Handwritten musical score for "Polka La Lila" by "Officier". The score is written on ten staves. The first staff is the treble clef melody in 2/4 time with a key signature of three sharps (F#, C#, G#). The second and third staves are the piano accompaniment. The fourth and fifth staves continue the piano accompaniment. The sixth and seventh staves are the treble clef melody, with the word "fin" written above the sixth staff. The eighth staff is the piano accompaniment. The ninth and tenth staves are the treble clef melody, with the word "Coda" written above the ninth staff. The score includes various musical notations such as notes, rests, accidentals, and dynamic markings.

Polka.

in mi 3/4

La Lila

Finis

Handwritten musical score for 'La Lila'. The score is written on ten staves. The first staff is a treble clef with a 2/4 time signature. The music consists of a melody and a bass line. There are various musical notations including notes, rests, and dynamic markings such as 'p' (piano) and 'f' (forte). The score includes several measures with repeat signs and first/second endings. The word 'fin' is written above a measure in the sixth staff. The piece concludes with the initials 'D.C.' (Da Capo) in the seventh staff.

Coda

Handwritten musical score for the 'Coda' section. It consists of two staves. The first staff begins with a treble clef and a 2/4 time signature. The music is a short melodic fragment. The second staff continues the melody and ends with a double bar line and a fermata.

Polka

La Lila

Cajal

Handwritten musical score for a polka titled "La Lila" by Cajal. The score is written on 11 staves. The first staff is the treble clef melody in 2/4 time. The second staff is the bass clef accompaniment, featuring triplets and slurs. The third and fourth staves continue the accompaniment with various rhythmic patterns. The fifth and sixth staves show the melody and accompaniment with dynamic markings like "p" and "f". The seventh and eighth staves continue the piece, ending with a "fin" marking. The ninth and tenth staves are a coda section, and the eleventh staff is a final bass clef line. The score is written in brown ink on aged paper with some staining and a torn bottom right corner.

Polka

La Lila

G. Bayan

Handwritten musical score for Polka La Lila by G. Bayan. The score consists of eight staves of music. The first staff is the melody in treble clef, 2/4 time, with a 3-measure rest. The second staff is the bass line in bass clef, 2/4 time, with a 3-measure rest. The third staff is a second bass line in bass clef, 2/4 time, with a 3-measure rest. The fourth staff is a second bass line in bass clef, 2/4 time, with a 3-measure rest. The fifth staff is a second bass line in bass clef, 2/4 time, with a 3-measure rest. The sixth staff is a second bass line in bass clef, 2/4 time, with a 3-measure rest. The seventh staff is a second bass line in bass clef, 2/4 time, with a 3-measure rest. The eighth staff is a second bass line in bass clef, 2/4 time, with a 3-measure rest. The score includes various musical notations such as notes, rests, and dynamic markings like 'f' and 'fin'.

Coda

S.C.

his