

VENISE


 Quadrille de Contredanses

ET UNE VALSE

*Pour deux Violons, Alto et Basson**Flûte ou Flageolet**et Solos de Trompette Cornet (ad-libitum)*

ou à Grand Orchestre

PAR
MUSARD.*Orchestre : 9^e**Quintette : 4^e*A PARIS, chez J. MEISSONNIER, Editeur, Rue Dauphine, N^o 22.

à Londres, chez Bousquet

J. M. 691



VENISE.

1^{er} VIOLON.

P. MUSARD.

no. 1.

CODA.

f

p

PANTALON.

no. 2.

f

p

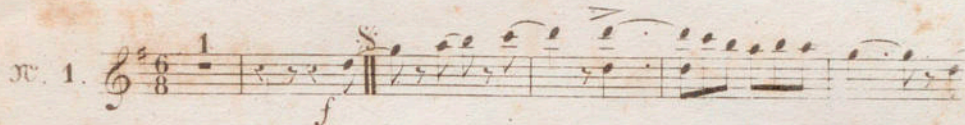
D.C.

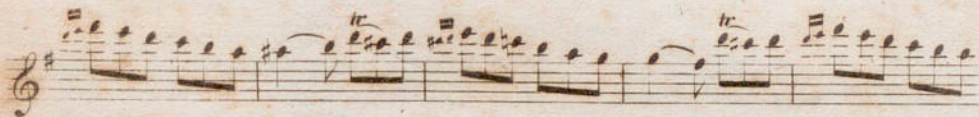
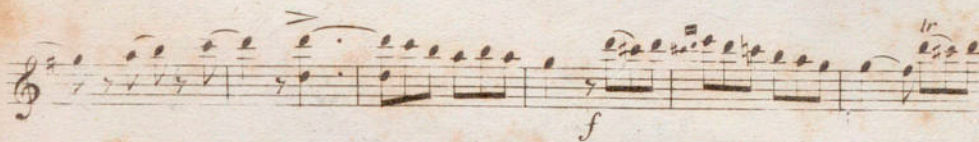
ETE.

VENISE.

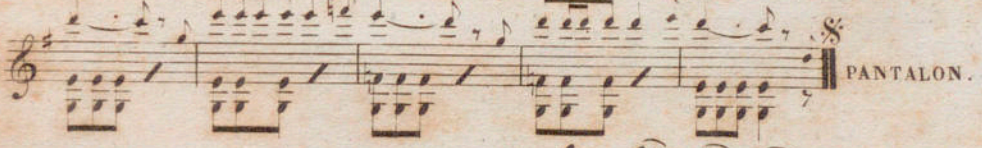
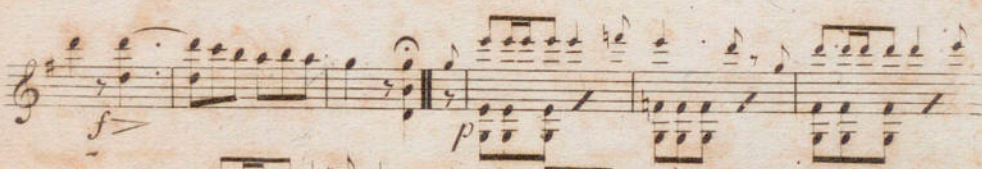
1^{re} VIOLON.

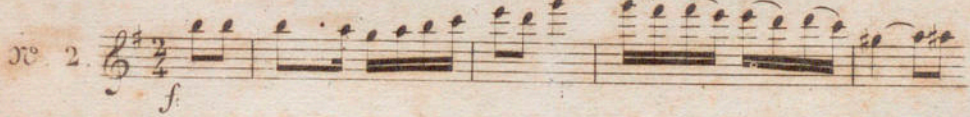
P. MUSARD.


No. 1. 







No. 2. 



V. VIOLON.

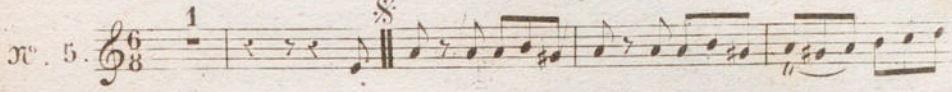
no. 3.

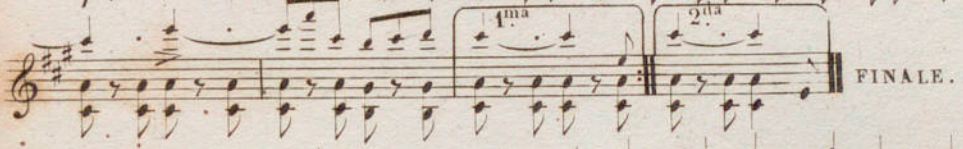
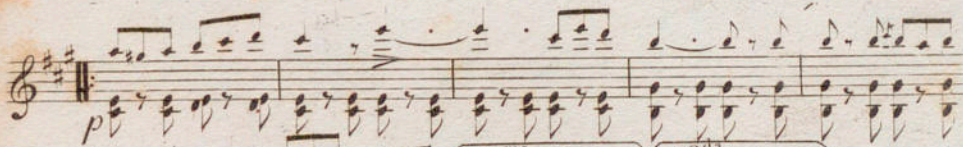
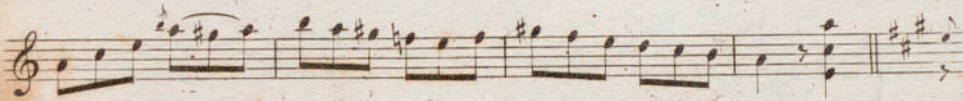
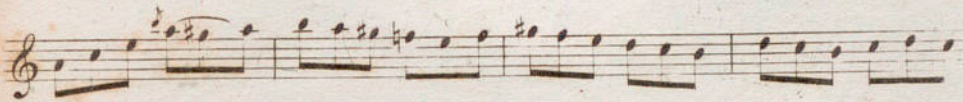
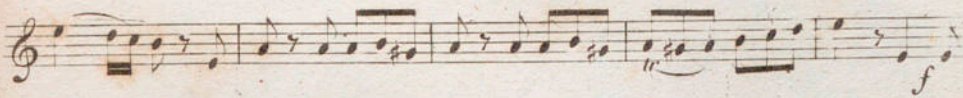
no. 4.

POULE.

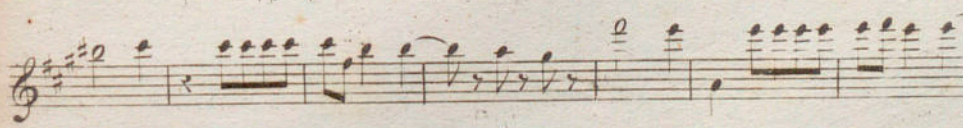
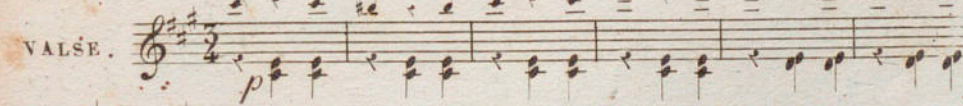
PASTOURELLE.

1^o VIOLON.

no. 5. 



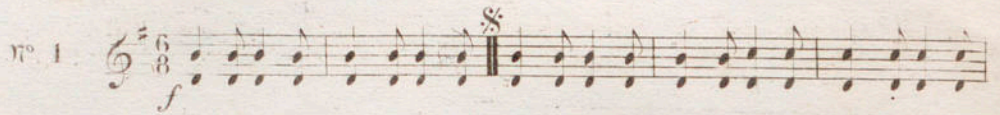
VALSE.

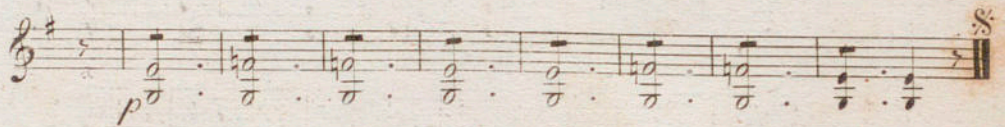
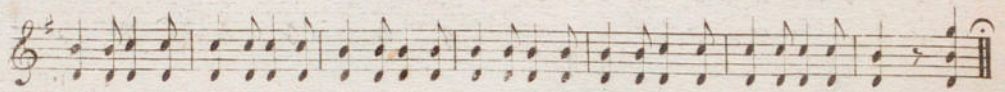
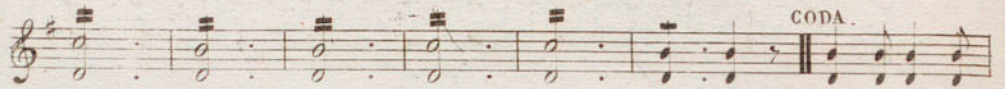
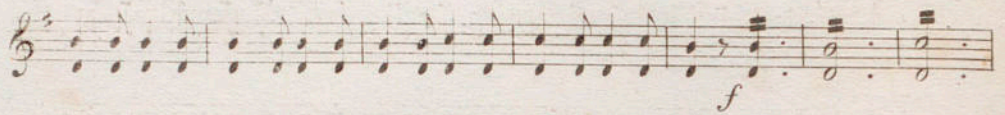


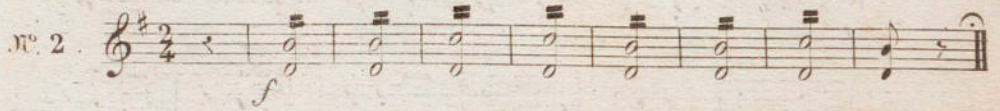
VENISE

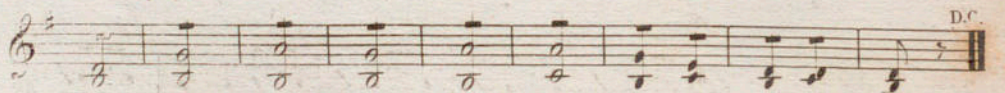
2^{me} VIOLON

P. MUSARD.

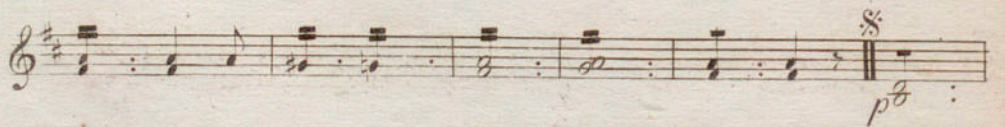
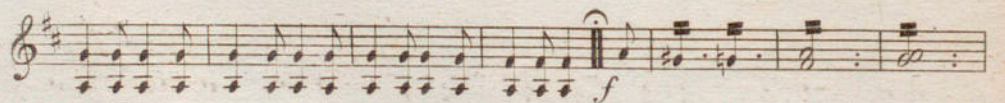
n^o 1. 



n^o 2. 



n^o 3. 



2^{me} VIOLON

№. 4.

f

p

D.C.

№. 5.

p

cresc.

WALSE.

f

no. 1.

no. 1.

no. 1.

no. 1.

no. 1.

CODA

no. 2.

no. 2.

no. 2.

no. 2.

no. 3.

no. 3.

no. 3.

no. 3.

no. 4.

The first system of the Alto part consists of two staves. The upper staff contains a melodic line starting with a half note, followed by quarter notes and eighth notes. A piano (*p*) dynamic marking is placed below the first measure. The lower staff provides a piano accompaniment with chords and rhythmic patterns. The system concludes with a double bar line and a *D.C.* (Da Capo) instruction.

№. 5.

The second system, labeled '№. 5.', also consists of two staves. The upper staff begins with a piano (*p*) dynamic marking and contains a melodic line with various note values. The lower staff provides a piano accompaniment. A forte (*f*) dynamic marking appears in the lower staff towards the end of the system. The system ends with a double bar line and a repeat sign.

WALZE .

The third system, labeled 'WALZE .', consists of two staves. The upper staff contains a melodic line with a waltz-like rhythm. The lower staff provides a piano accompaniment with chords. The system concludes with a double bar line.

VENISE

BASSE.

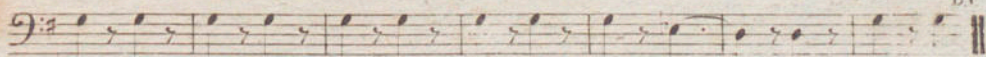
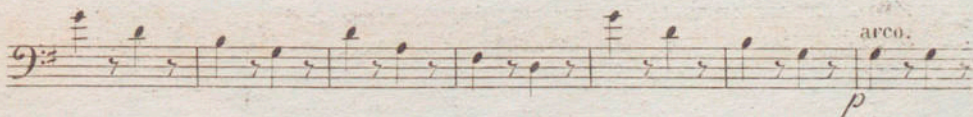
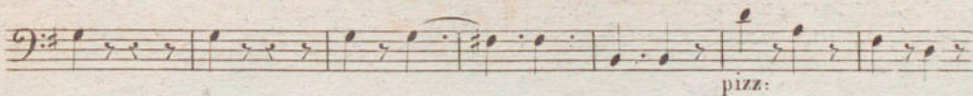
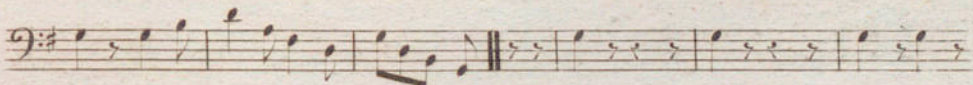
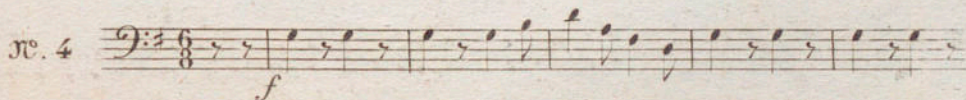
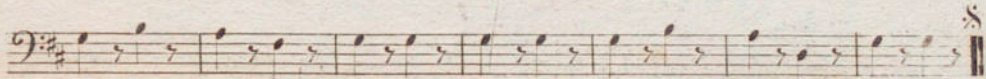
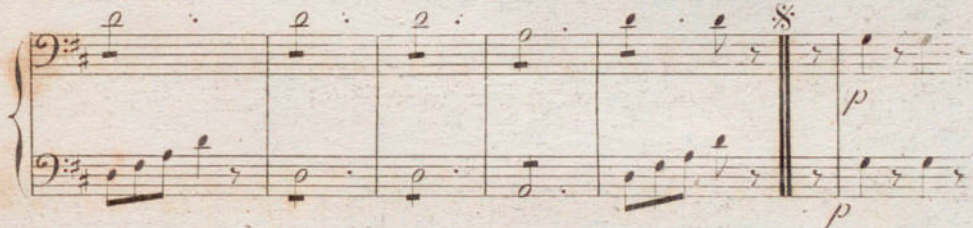
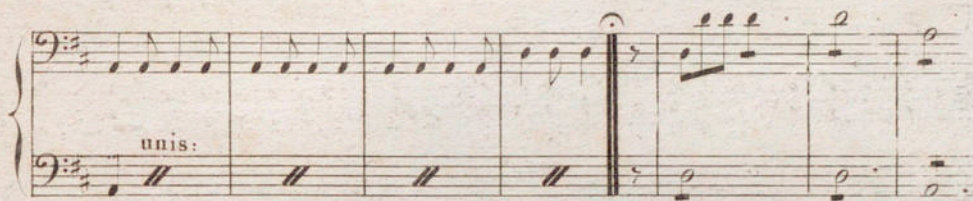
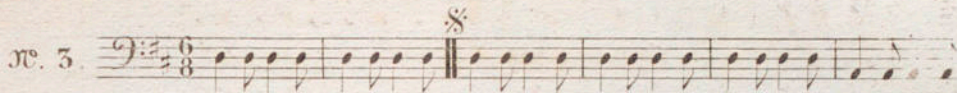
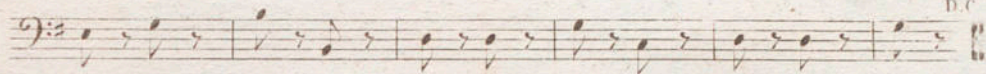
P. MUSARD.

no. 1.

no. 2

BASSE

D.C.



D.C.

VENISE

FLAGEOLET.

P. HUSSARD.

no. 1

PANTALON.

no. 2

FLAGEOLET.

D.C.

ETE.

no. 3.

POUR.

VENISE.

FLÛTE.

P. MUSARD.

no. 1.

no. 2.

FLUTE.

no. 3.

no. 4.

VENISE.

1^{re} CLARINETTE.

P. MUSARI.

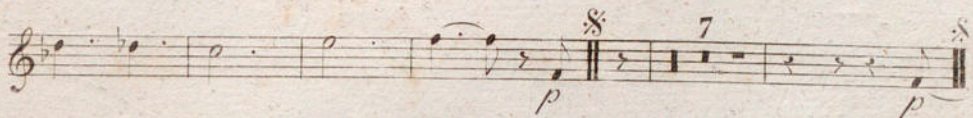
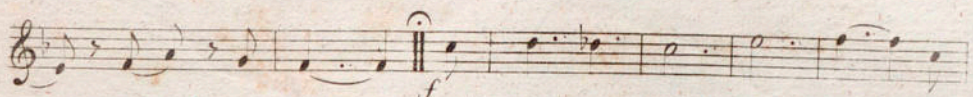
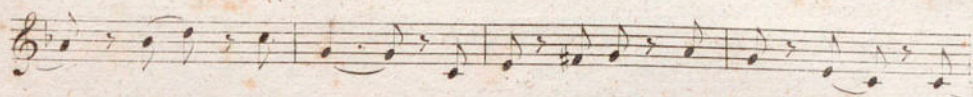
N^o 1.
en Ut. $\frac{6}{8}$ 1 S
f *f*

CODA. *f*

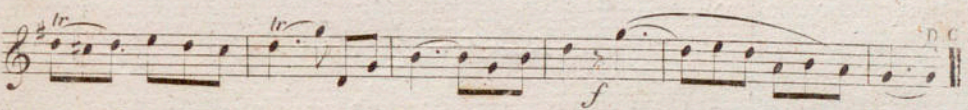
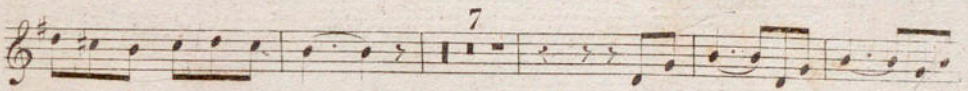
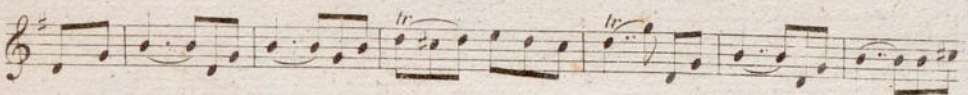
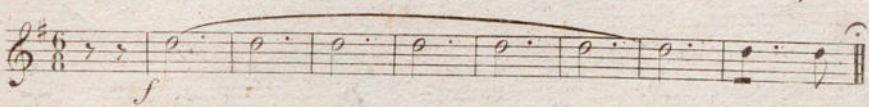
N^o 2. $\frac{2}{4}$ 7

N^o 3.
en La. $\frac{6}{8}$ 1 S

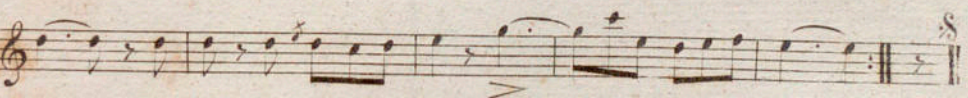
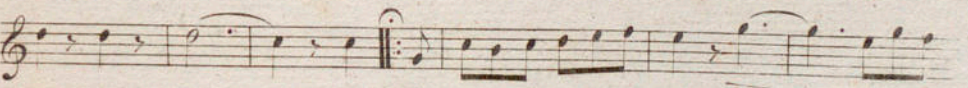
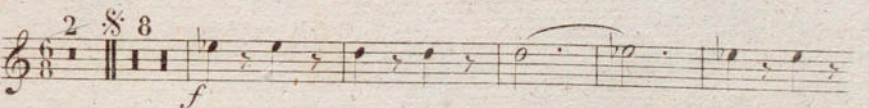
1^{re} CLARINETTE.



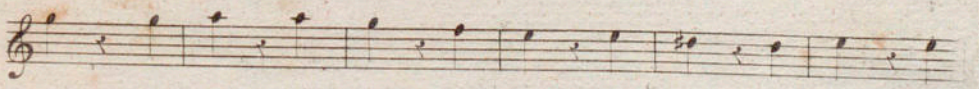
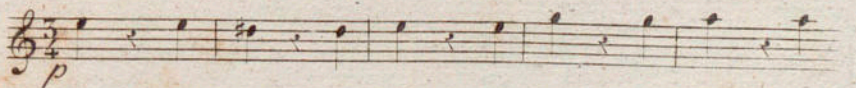
N^o. 4.
en Ut.



N^o. 5.
en La.



VAISE.



VENISE.

2^{me} CLARINETTE.

P. MUSARD.

N^o 1.
en Ut.

N^o 2. Tacet.

N^o 3.
en La.

N^o 4.
en Ut.

N^o 5.
en La.

WALSE.

VENISE.

1^{er} COR.

P. MUSARD.

N^o 1.
en Sol. $\frac{6}{8}$ 2 §

f *f*>

f *f*

§ *p.*

N^o 2.
en Sol. $\frac{2}{4}$ 15 DC

N^o 3.
en Sol. $\frac{6}{8}$ 2 § 7

f

§ 8 §

N^o 4.
en Sol. $\frac{6}{8}$ 8 *p* 7 DC

f

N^o 5.
en Ré. $\frac{6}{8}$ 2 § 8 16 §

§ *f*

VALSE
en Ré. $\frac{3}{4}$ 16

VENISE.

2^{me} COR.

P. MUSARD.

N^o 1.
en Sol. $\frac{6}{8}$ 2 §

N^o 2.
en Sol. $\frac{2}{4}$ f 15

N^o 3.
en Sol. $\frac{6}{8}$ 2 § 7 f

N^o 4.
en Sol. $\frac{6}{8}$ ff


N^o 5.
en Ré. $\frac{6}{8}$ 2 § 3 f

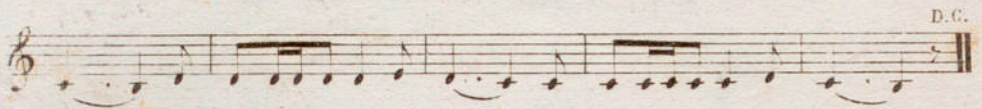
VALSE
en Ré. $\frac{2}{4}$ 16

VENISE.

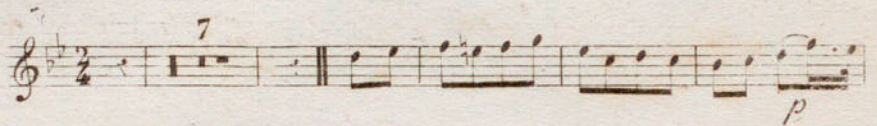
CORNET a Piston.

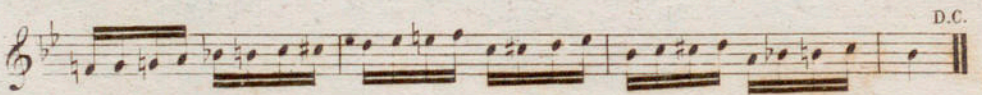
P. MUSARD.

N^o. 1.
en La. 



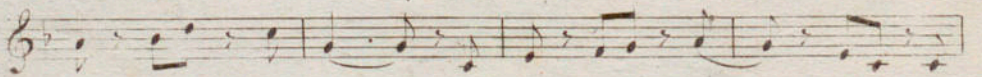
D.C.

N^o. 2.
en La. 

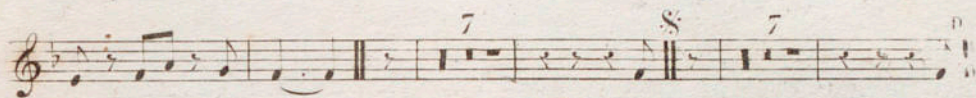


D.C.

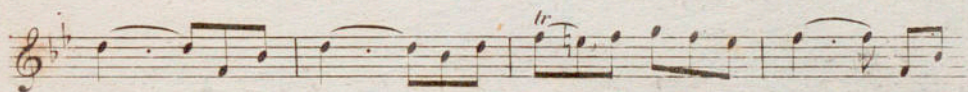
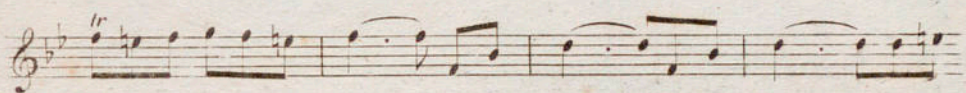
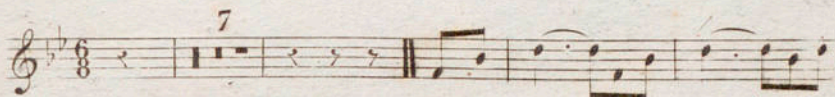
N^o. 3.
en La. 



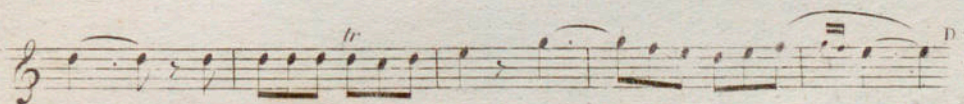
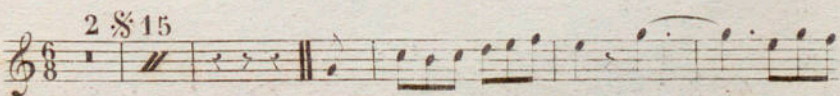
CORNET a Piston.



N^o. 4.
en La.



N^o. 5.
en La.



Valse Tacet.

VENISE.

TROMBONES.

P. MUSARD.

no. 1. Musical notation for Trombone No. 1, measures 1-8. Key signature: one sharp (F#), time signature: 6/8. Dynamics: *f*, *f*>, *p*. Rehearsal marks: 2, 8.

no. 2. Musical notation for Trombone No. 2, measures 1-15. Key signature: one sharp (F#), time signature: 2/4. Dynamics: *f*. Rehearsal mark: 15 D.C.

no. 3. Musical notation for Trombone No. 3, measures 1-8. Key signature: one sharp (F#), time signature: 6/8. Dynamics: *f*. Rehearsal marks: 2, 7, 8.

no. 4. Musical notation for Trombone No. 4, measures 1-23. Key signature: one sharp (F#), time signature: 6/8. Dynamics: *f*. Rehearsal mark: 23 D.

no. 5. Musical notation for Trombone No. 5, measures 1-16. Key signature: one sharp (F#), time signature: 6/8. Dynamics: *f*. Rehearsal marks: 2, 8, 16.

VALSE. Musical notation for Valse, measures 1-16. Key signature: one sharp (F#), time signature: 3/4. Rehearsal mark: 16.