

UNE
NUIT À L'OPERA

Quadrille

POUR

ORCHESTRE

Par
C^e

MUSARD

PRIX { Petit Orchestre .. 6[!]
Grand Orchestre . 9[!]

A. Lafont.

Paris, chez BRANDUS et C^{ie} Editeurs,
103. Rue Richelieu.

UNE NUIT À L'OPÉRA.

Quadrille.

1^{er} VIOLON.

MUSARD.

N^o 1.

PANTALON.

N^o 2.

ÉTÉ.

N^o 3.

POULE.

1^{er} VIOLON.

1^{re} 2^e et 3^e fois. 4^e fois à la Coda.

Musical staff with notes and dynamics *p* and *f*.

N^o 4.
PASTOURELLE.

Musical staff for No. 4 Pastourelle with dynamics *f*, *p*, *mf* and *D.C.* marking.

N^o 5.
FINALE.


Musical staff for No. 5 Finale with dynamics *p*, *f*, *D.C.* and repeat markings.


UNE NUIT À L'OPÉRA.

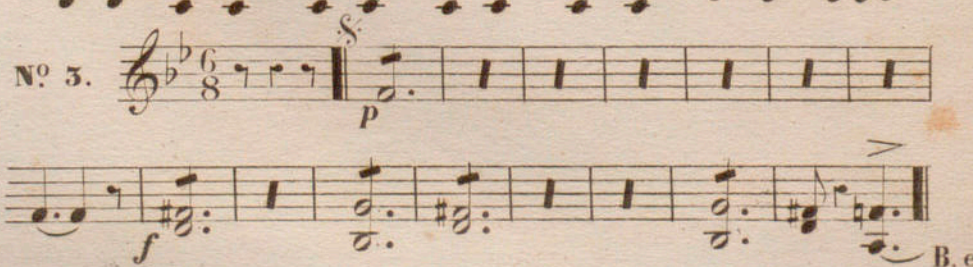
Quadrille.

MUSARD.

2^d VIOLON.

N^o 1. 

N^o 2. 

N^o 3. 

2^d VIOLON.

CODA.

First staff of the CODA section, featuring a series of eighth notes with accents and a dynamic marking of *f*.

Second staff of the CODA section, featuring a series of quarter notes with a dynamic marking of *p*.

N^o 4.
Third staff, marked *f*, showing a sequence of chords and notes.

Fourth staff, marked *p*, continuing the melodic line.

Fifth staff, marked *mf*, featuring a more complex rhythmic pattern.

Sixth staff, marked *f*, ending with a double bar line and the instruction **D.C.**

N^o 5.
Seventh staff, marked *p*, showing a sequence of eighth notes.

Eighth staff, continuing the sequence of eighth notes.

FIN. 1^e et 3^e fois.
Ninth staff, marked *f*, ending with a double bar line and the instruction **D.C.**

Tenth staff, marked *f*, continuing the sequence.

2^e et 4^e fois.
Eleventh staff, marked *f*, ending with a double bar line and the instruction **D.C.**

Twelfth staff, marked *f*, ending with a double bar line and the instruction **D.C.**

UNE NUIT A L'OPERA.

Quadrille.

MUSARD.

ALTOS.

N^o 1. 

CODA. 

FIN. 



N^o 2. 



N^o 3. 

ALTOS.

CODA.

FIN.
f
p

Nº 4.

f
p
mf
D.C.

Nº 5.

p
f
D.C.
f
D.C.
f
D.C.

FIN. 1^{re} et 3^e fois.

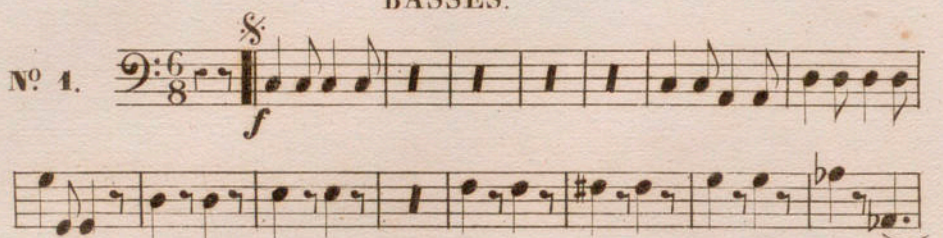
2^e et 4^e fois.

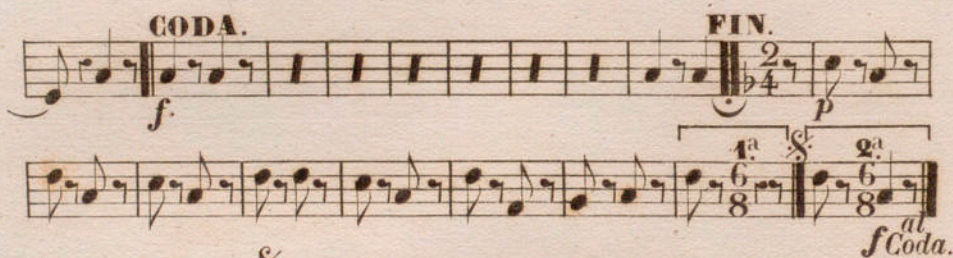
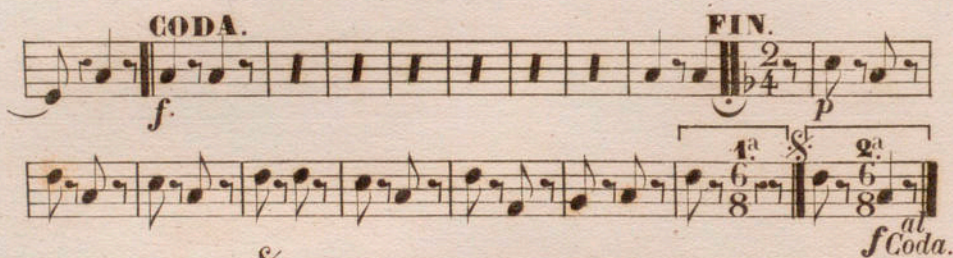
UNE NUIT À L'OPÉRA.

Quadrille.

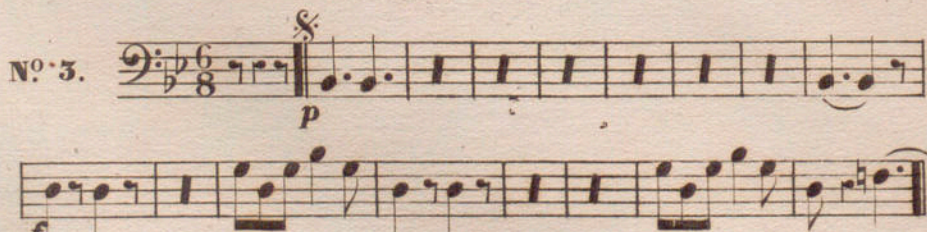
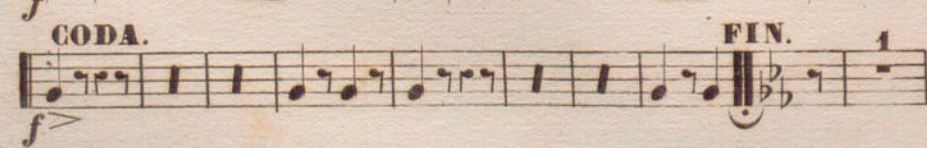
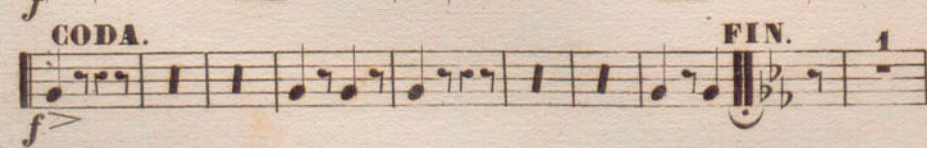
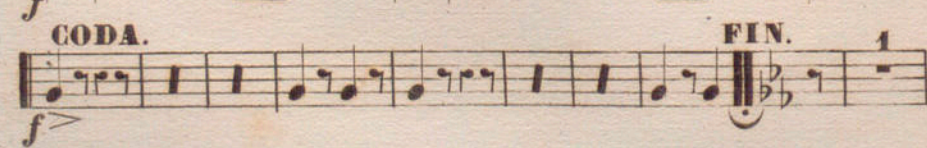
MUSARD.

BASSES.

N^o 1. 

CODA. 
FIN. 

N^o 2. 



CODA. 
FIN. 

BASSES.

Musical staff with notes and dynamics *p* and accents.

N^o 4.
Musical staff with bass clef, key signature of two sharps, and time signature of 2/4. Starts with dynamic *f*.

Musical staff with notes and dynamic *p*.

Musical staff with notes and dynamic *mf*.

Musical staff with notes and dynamic *mf*, ending with **D.C.**

N^o 5.
Musical staff with bass clef and time signature of 2/4. Starts with dynamic *p*.

Musical staff with notes and dynamic *f*.

Musical staff with notes and dynamic *f*, ending with **FIN. 1 et 3^e fois.**

Musical staff with notes and dynamic *f*.

Musical staff with notes and dynamic *f*, ending with **D.C. 2^e et 4^e fois.**

Musical staff with notes and dynamic *f*.

Musical staff with notes and dynamic *f*, ending with **D.C.** and time signature 2/4.

UNE NUIT À L'OPÉRA.

Quadrille.

MUSARD.

FLÛTE.

N^o 1. 

N^o 2. 

N^o 3. 

FLÛTE.

1^{re} 2^e et 3^e fois. 4^e fois à la Coda.

Musical staff with notes and dynamics *p* and *f*.

N^o 4.

Musical staff for No. 4 with treble clef, key signature of two sharps, and 2/4 time signature.

Musical staff with notes and dynamics *p*.

Musical staff with notes and dynamics *p*.

Musical staff with notes and dynamics *p*.

N^o 5.

Musical staff for No. 5 with treble clef and 2/4 time signature.

Musical staff with notes and dynamics *f*.

Musical staff with notes and dynamics *f*.

FIN 1^{re} et 3^e fois.

Musical staff with notes and dynamics *f*.

Musical staff with notes and dynamics *f*.

Musical staff with notes and dynamics *f*.

2^e et 4^e fois.

Musical staff with treble clef, key signature of one sharp, and 6/8 time signature.

Musical staff with notes and dynamics *f*.

D.C.

D.C.

D.C.

UNE NUIT À L'OPÉRA.

Quadrille.

MUSARD.

1^{re} CLARINETTE.

N^o 1. *en UT.* S
f

f

CODA.

FIN.

8.....

1^a 2^a

f at Coda.

N^o 2. *en LA.* S
f

p

N^o 3. *en stb.* S
p

p

CODA.

f

1^{re} CLARINETTE.

FIN. 1^{re} et 3^e fois.

N^o 4. *en LA.*

N^o 5. *en UT.*

UNE NUIT À L'OPÉRA.

MUSARD.

Quadrille.

2^e CLARINETTE.

N^o 1. *en UT.* $\frac{6}{8}$ *f*

f

CODA.

FIN. *p*

1^a 2^a

f al Coda.

N^o 2. *en LA.* $\frac{9}{4}$ *f*

f

p

N^o 3. *en SI b* $\frac{6}{8}$ *p*

p

f

CODA.

f

2^e CLARINETTE.

FIN. 1^{re} et 3^e fois.

N^o 4. *en LA.*

N^o 5. *en UT.*

D. C. 2^e et 4^e f.

UNE NUIT À L'OPÉRA.

Quadrille.

MUSARD.

1^{re} et 2^e CORS.

N^o 1. *en SOL.* S à 2. *f* à 2.

f CODA.

FIN. S $\frac{2}{4}$ *p*

1^a S 2^a *f* *al Coda.*

N^o 2. *en LA.* S *f*

N^o 3. *en FA.* S *p*

à 2. *f*

1^{er} et 2^e CORS.

CODA.

FIN. 5

N^o 4. *en RÉ.*

16 **D.C.**

N^o 5. *en SOL.*

8 **FIN. 1^{er} et 3^e fois.**

D.C. 2^e et 4^e fois.

D.C.

UNE NUIT À L'OPÉRA.

Quadrille.

MUSARD.

3^e et 4^e CORS.

N^o 1. *en UT.* $\frac{6}{8}$ *f* à 2. \S à 2. CODA. *f* FIN. $\frac{2}{4}$ *p* à 2. $\frac{6}{8}$ *f* $\frac{6}{8}$ *f* al Coda.

N^o 2. *en RÉ.* $\frac{2}{4}$ *f* \S 16 \S

N^o 3. *en sib.* $\frac{6}{8}$ *p* à 2. \S *f* CODA. *f*

3^e et 4^e CORS.

Musical staff with notes and accents, ending with **FIN.**

Musical staff with notes and a **p** dynamic marking.

N^o 4. *en RÉ.*
Musical staff with notes and a **f** dynamic marking.

16
Musical staff with notes and a **p** dynamic marking, ending with **D.C.**

N^o 5. *en UT.*
Musical staff with notes and a **f** dynamic marking.

8
Musical staff with notes and a **f** dynamic marking, ending with **FIN. 4^e et 5^e fois.**

Musical staff with notes and rests.

Musical staff with notes and rests, ending with **D.C.**

2^e et 4^e fois.
Musical staff with notes and a **f** dynamic marking.

Musical staff with notes and rests, ending with **D.C.**

UNE NUIT À L'OPÉRA.

Quadrille.

MUSARD.

1^{er} CORNET à PISTONS.

N^o 1. *en LA^b* *f* *S*

f *S* *CODA.* *f*

FIN. *p* *1^{re}* *2^{de}* *f* *f* *al Coda.*

N^o 2. *en LA^b* *ff* *S*

ff *S* *p* *f*

N^o 3. *en sib.* *p* *S*

en sib. *p* *S* *f* *CODA.* *f* *FIN. 2^e et 4^e fois.* *p*

1^{er} CORNET à PISTONS.

1^{re} 2^e et 3^e fois. 4^e f. à la Coda.

N^o 4. *en LA*
f

D.C.

N^o 5. *en LA*
p

FIN.

1^{re} et 3^e fois.

D.C.

2^e et 4^e fois.

D.C.

UNE NUIT À L'OPÉRA.

Quadrille.

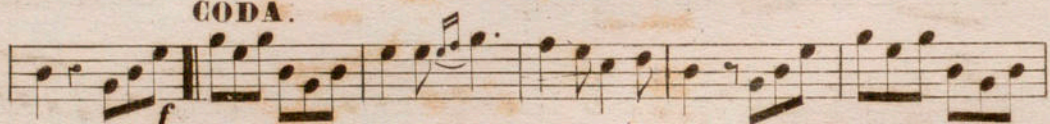
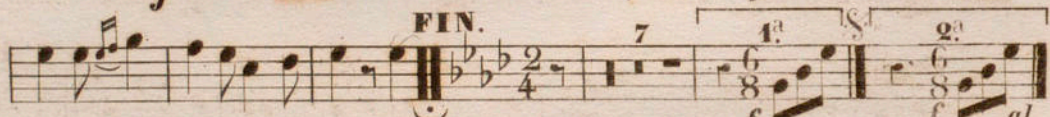

MUSARD.

2^d CORNET à PISTONS.

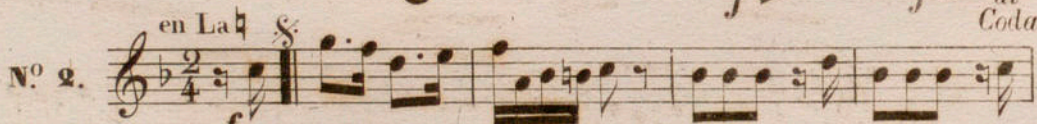
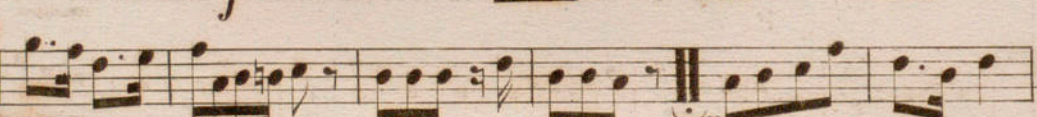

N^o 1. *en La^b* *f* 



CODA.

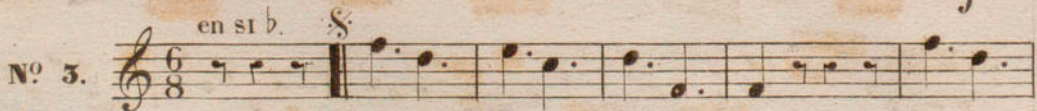
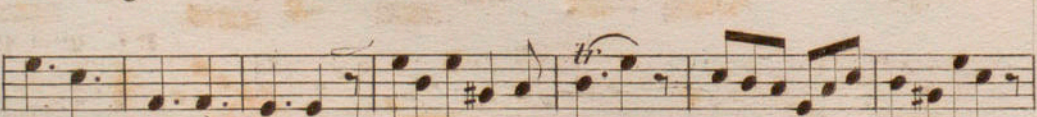

f 



FIN.

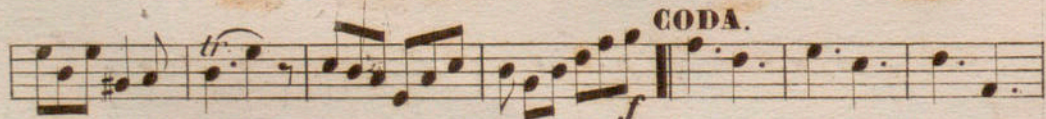
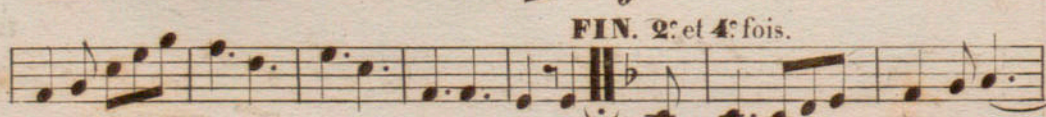

N^o 2. *en La^b* *f* 







N^o 3. *en si^b* *f* 



CODA.

f 



FIN. 2^e et 4^e fois.

2^d CORNET à PISTONS.

1^e 2^e et 3^e f. 4^e f. a la Coda.

Musical staff for the first system of the 2nd Cornet part, featuring a melodic line with dynamics *p* and *f*.

N^o 4. *en LA* $\frac{2}{4}$ *f*

Musical staff for the second system of the 2nd Cornet part, starting with "N^o 4." and "en LA" in the key of A major, with a 2/4 time signature and dynamic *f*.

Musical staff for the third system of the 2nd Cornet part, ending with a double bar line and dynamic *p*.

Musical staff for the fourth system of the 2nd Cornet part.

Musical staff for the fifth system of the 2nd Cornet part.

Musical staff for the sixth system of the 2nd Cornet part, ending with "D.C."

N^o 5. *en LA* $\frac{2}{4}$ *p*

Musical staff for the seventh system of the 2nd Cornet part, starting with "N^o 5." and "en LA" in the key of A major, with a 2/4 time signature and dynamic *p*.

Musical staff for the eighth system of the 2nd Cornet part, ending with dynamic *f*.

Musical staff for the ninth system of the 2nd Cornet part, ending with "FIN 1^e et 3^e fois." and dynamic *f*.

Musical staff for the tenth system of the 2nd Cornet part.

Musical staff for the eleventh system of the 2nd Cornet part.

Musical staff for the twelfth system of the 2nd Cornet part, ending with "D.C. 2^e et 4^e fois."

Musical staff for the thirteenth system of the 2nd Cornet part, starting with dynamic *f*.

Musical staff for the fourteenth system of the 2nd Cornet part, ending with "D.C." and a 2/4 time signature.

UNE NUIT À L'OPÉRA.

Quadrille.

MUSARD.

TROMPETTES.

N^o 1. *en UT.* *à 2.* *f*

à 2. *à 2.*

à 2.

à 2. **CODA.** *f*

FIN. 7 *1^a* *2^a* *f* *f al Coda.*

N^o 2. *en RE.* *f*

f

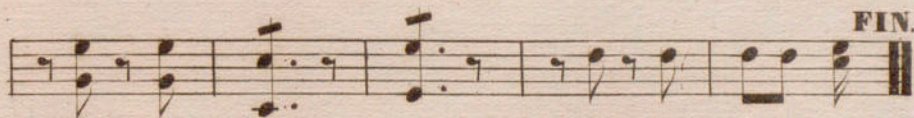
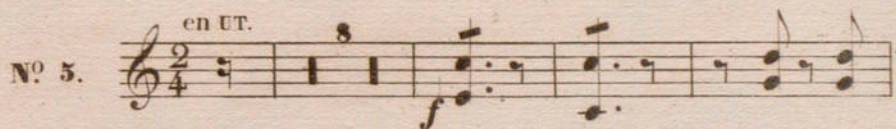
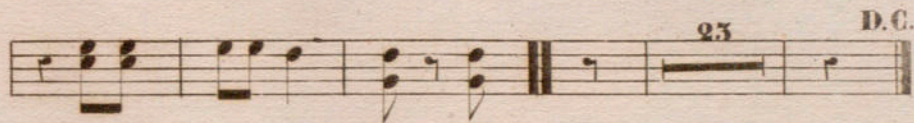
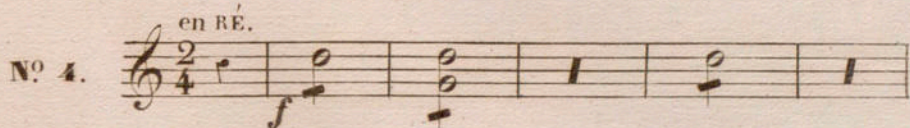
16

N^o 3. *en SI b.* *f*

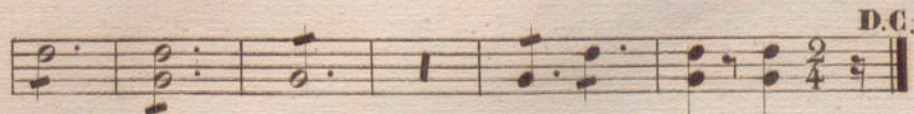
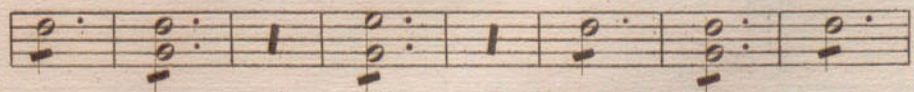
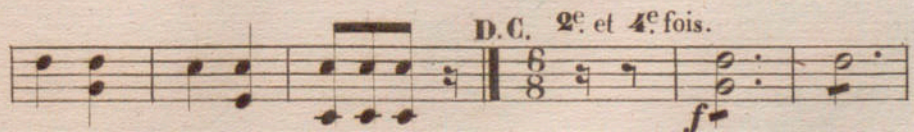
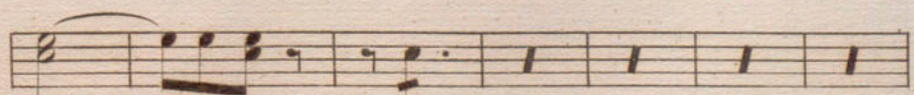
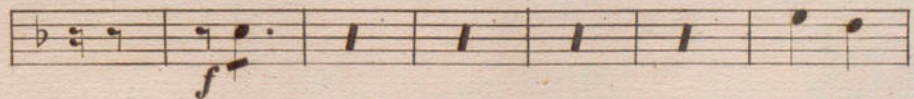
f

CODA. *f*

TROMPETTES.



1^e et 3^e fois.



UNE NUIT À L'OPÉRA.

Quadrille.

MUSARD.

1^{er} et 2^e: TROMBONES.

N^o 1.

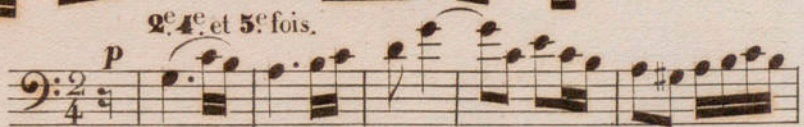
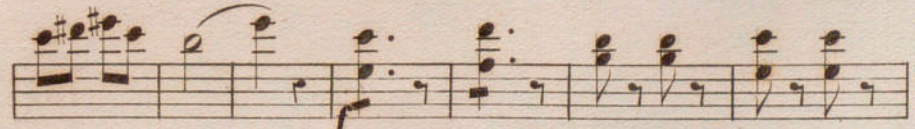

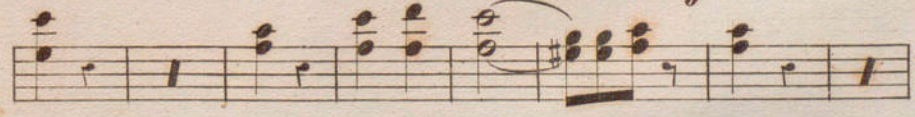
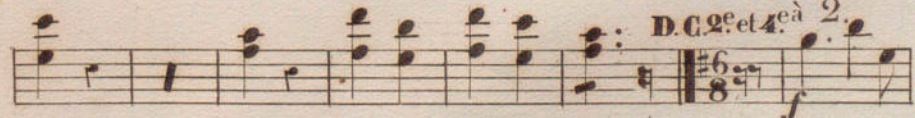
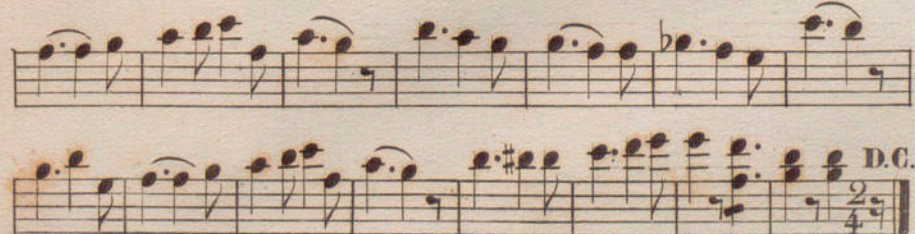
N^o 2.

N^o 3.

1^{er} et 2^e TROMBONES.

N^o 4. 



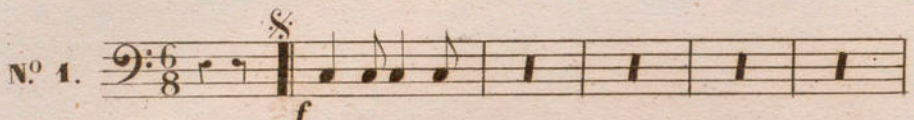
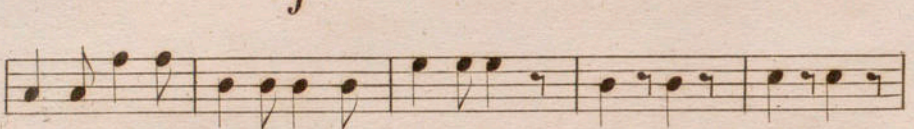

N^o 5. 






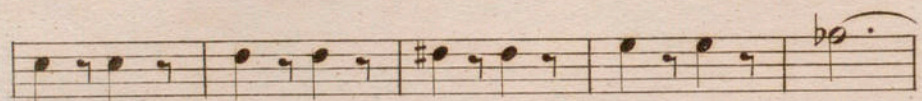
UNE NUIT À L'OPÉRA.

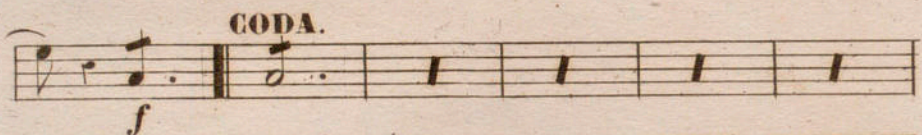
MUSARD.

Quadrille

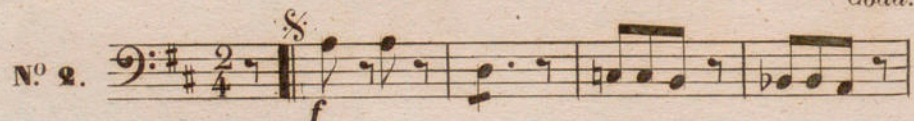
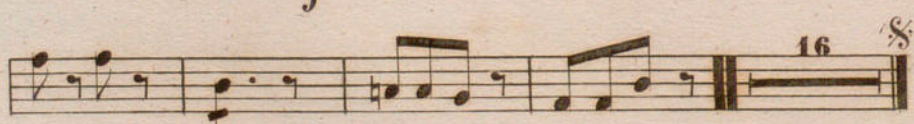
3. TROMBONE.

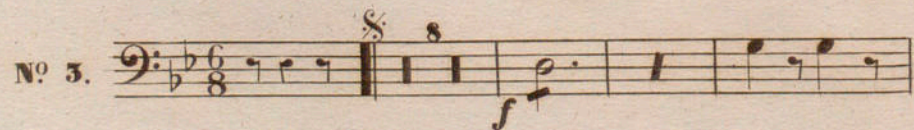
N^o 1. 


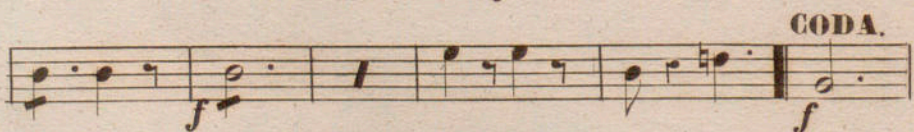


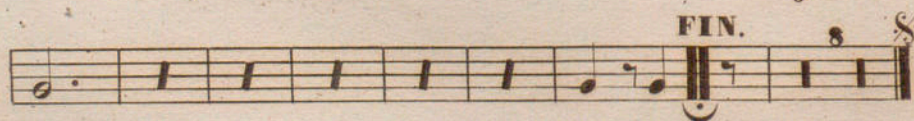
CODA.


FIN.

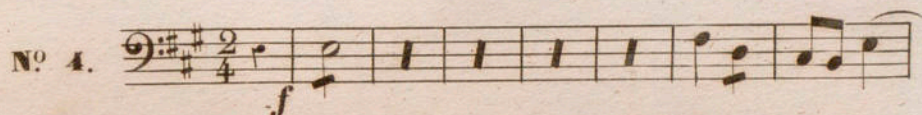

N^o 2. 



N^o 3. 

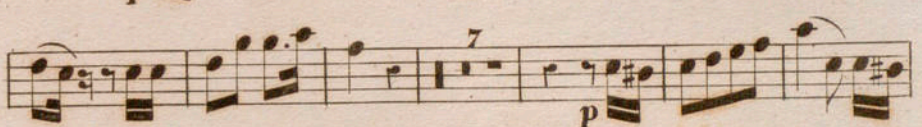
CODA.


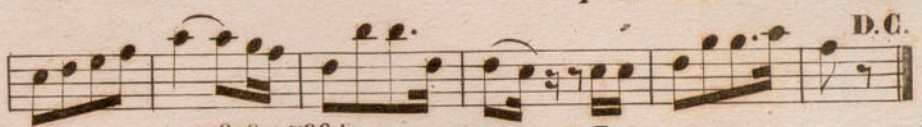
FIN.


3: TROMBONE.


N^o 4.  *f*

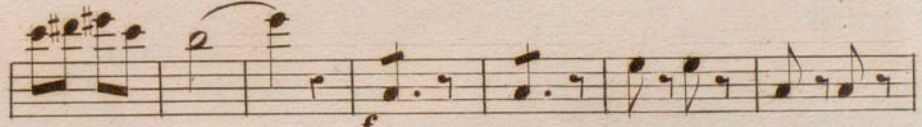
 *p*

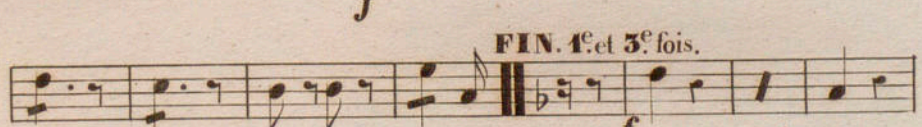
 *p* 7

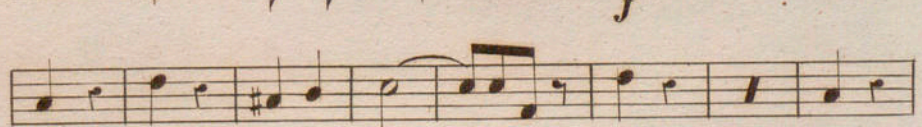
 *p* D.C.

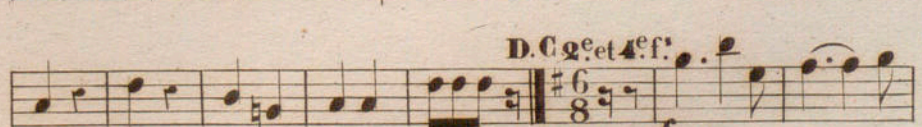
2^e, 4^e et 5^e fois.

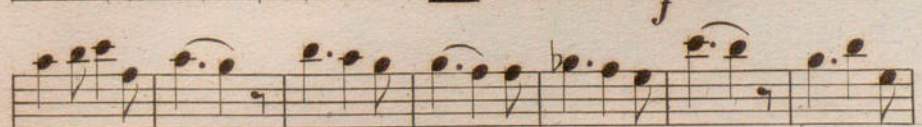
N^o 5.  *p*

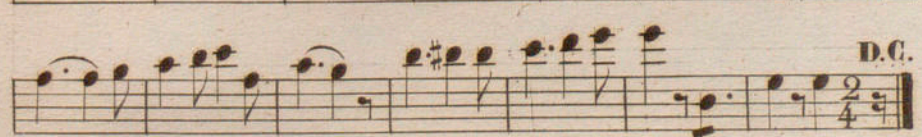
 *f*

 FIN. 1^e et 3^e fois. *f*

 *f*

 D.C. 2^e et 4^e fois. *f*

 *f*

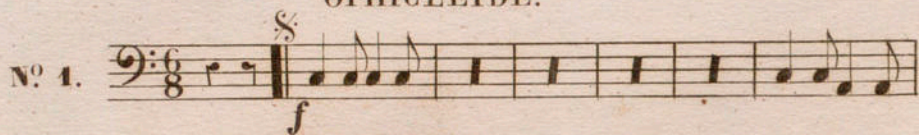
 D.C. *f* 2/4

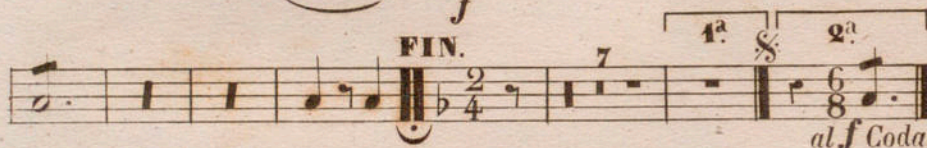
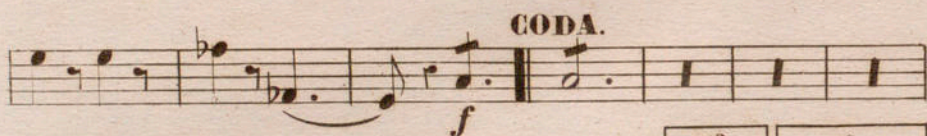
UNE NUIT À L'OPÉRA.

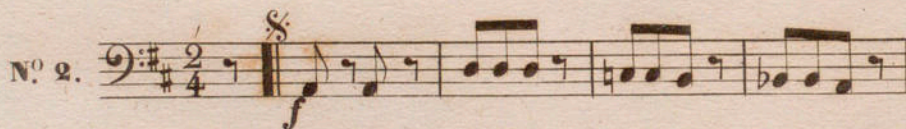
Quadrille.

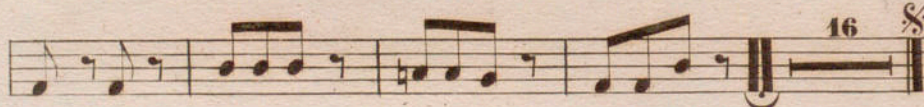
MUSARD.

OPHICLÉIDE.

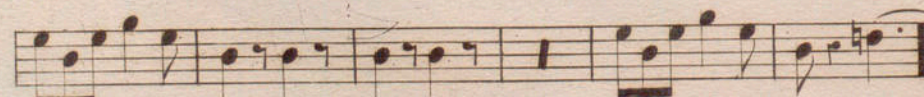
N^o 1. 

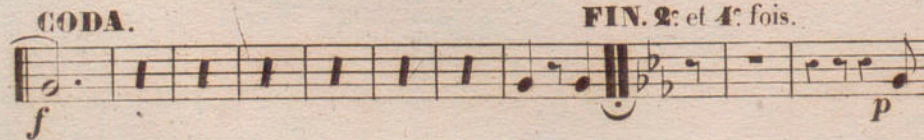


N^o 2. 



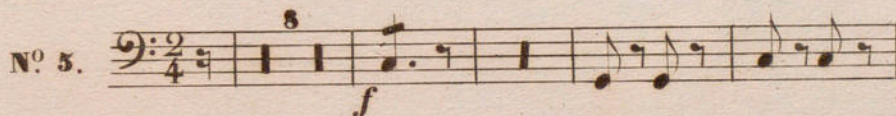
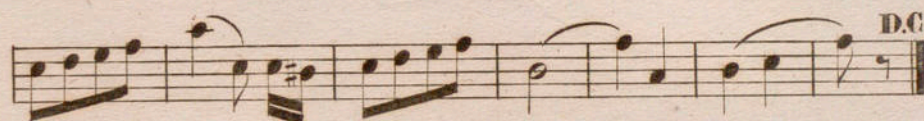
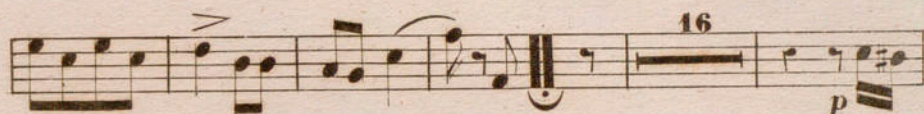
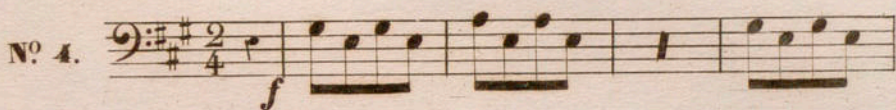
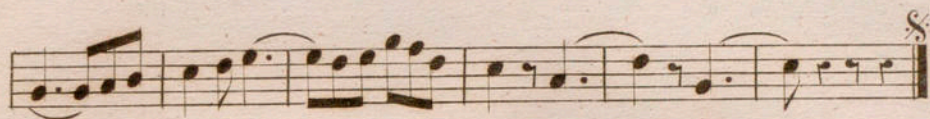
N^o 3. 



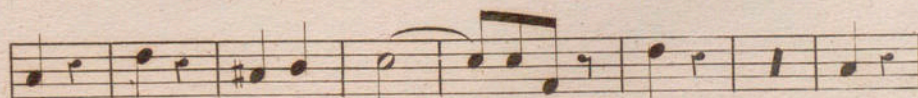
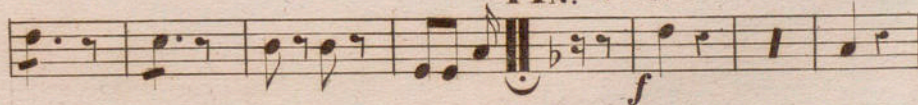
CODA. 

FIN. 2: et 4: fois.

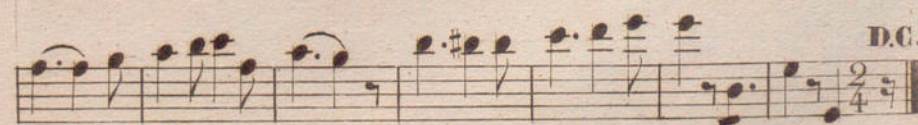
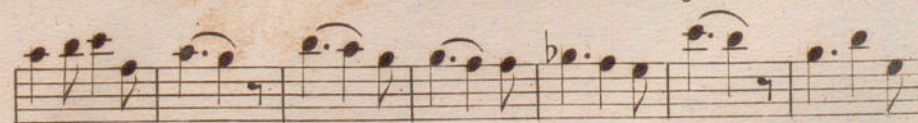
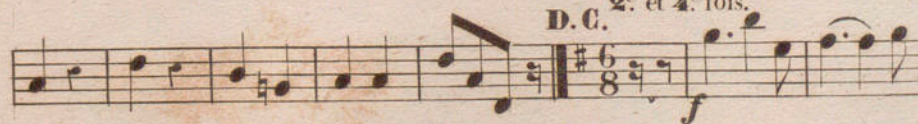
OPHICLÉIDE.



FIN. 1^{re} et 3^e fois.



D.C. 2^e et 4^e fois.



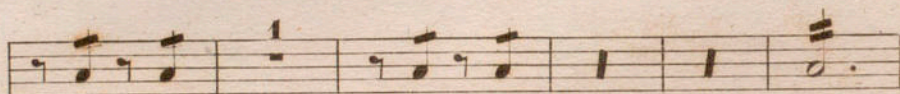
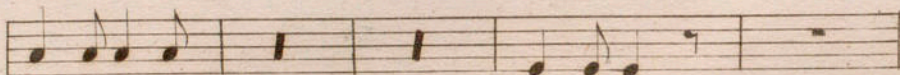
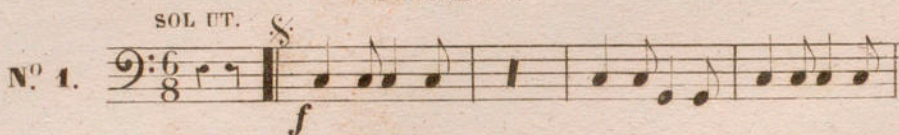
UNE NUIT À L'OPÉRA.

Quadrille.

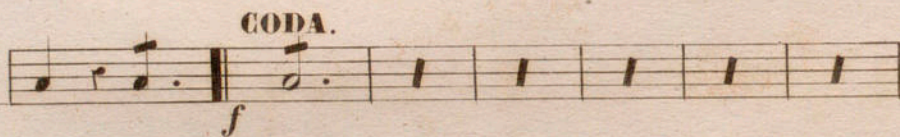
MUSARD.

TIMBALES.

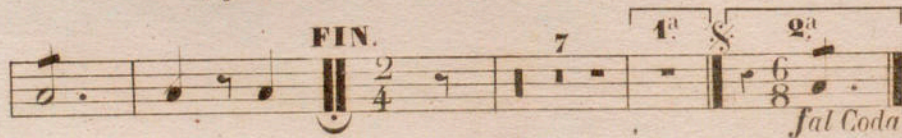
N^o 1. SOL UT. §
f



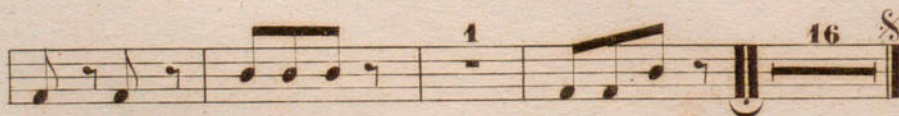
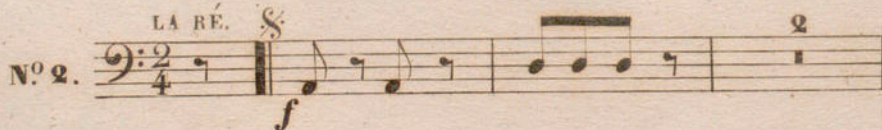
CODA.
f



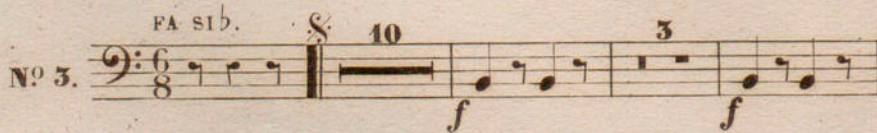
FIN. 2/4 7 1^a § 2^a 6/8
f *fa Coda*



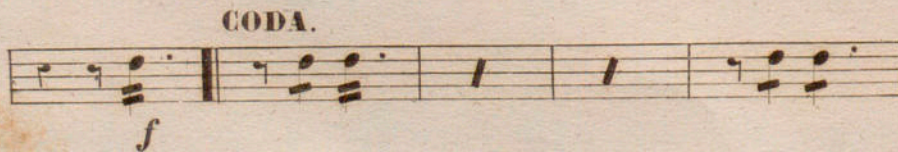
N^o 2. LA RÉ. §
f



N^o 3. FA SI^b. § 10 3
f *f*

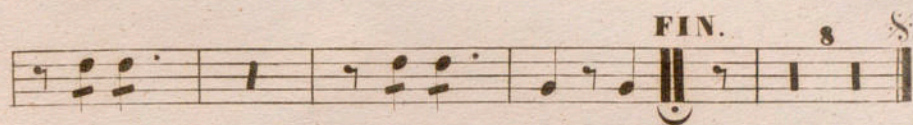


CODA.
f

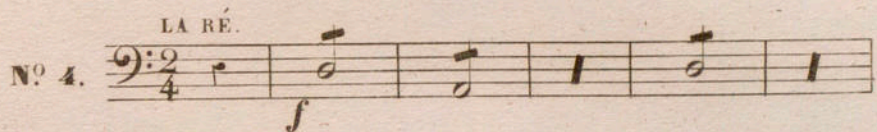


TIMBALES.

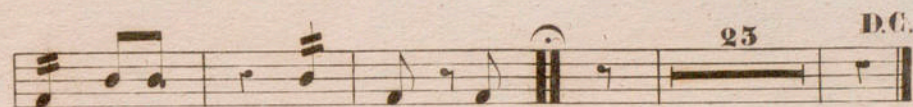
FIN. 8



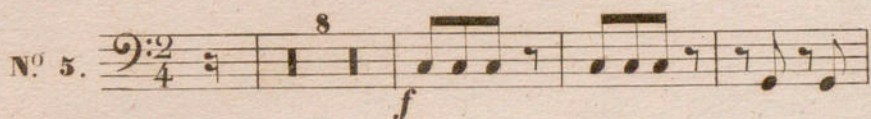
Nº 4. LA RÉ. *f*



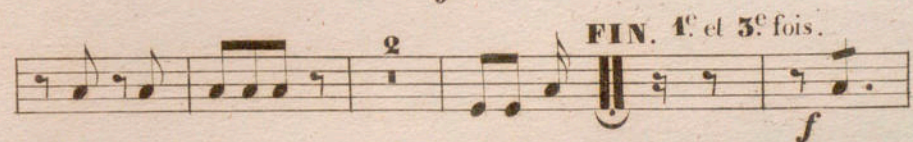
25 D.C.



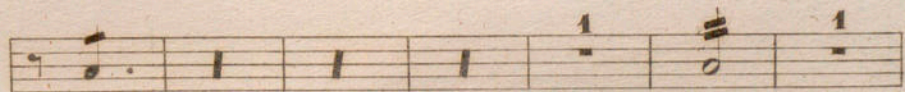
Nº 5. *f*



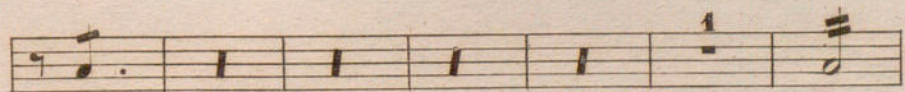
FIN. 1^e et 3^e fois. *f*



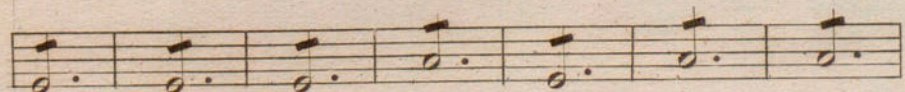
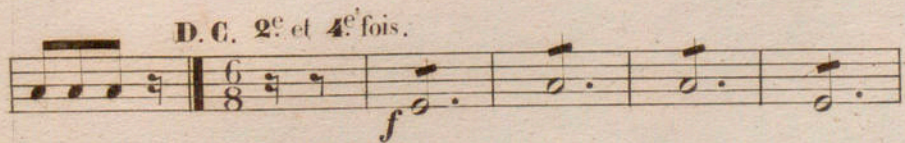
1



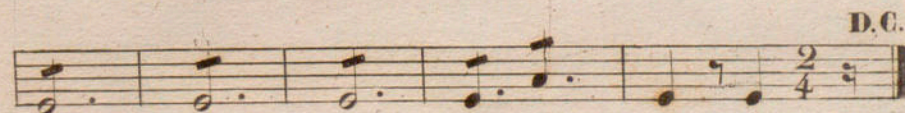
1



D.C. 2^e et 4^e fois. *f*



D.C. 2/4

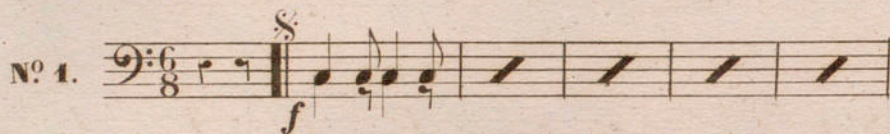


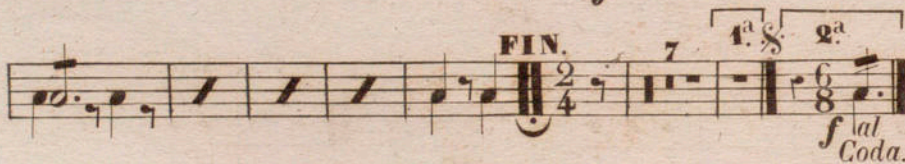
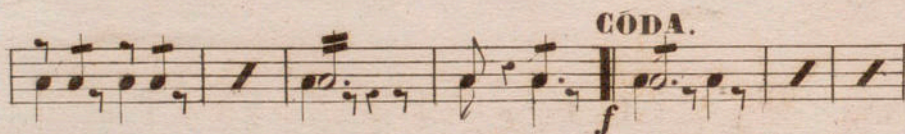
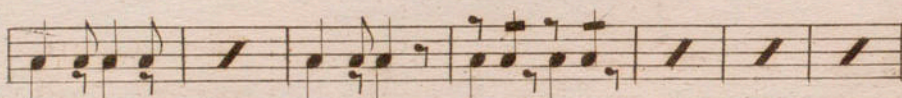
UNE NUIT À L'OPÉRA.

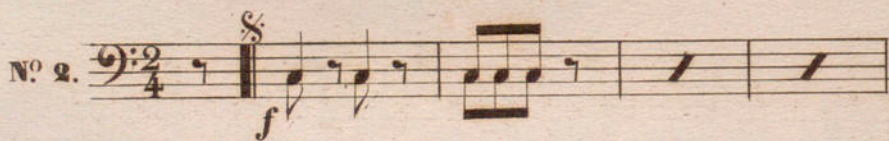
Quadrille.

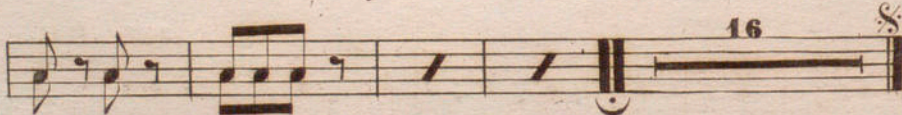
MUSARD.

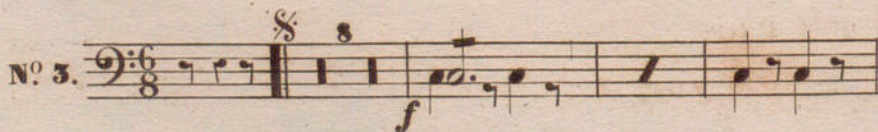
TAMBOUR et G^{re} CAISSE.

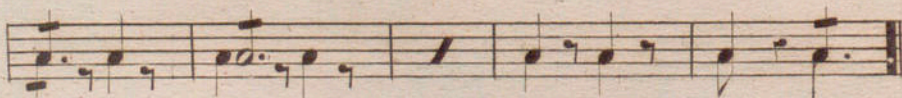
N^o 1. 

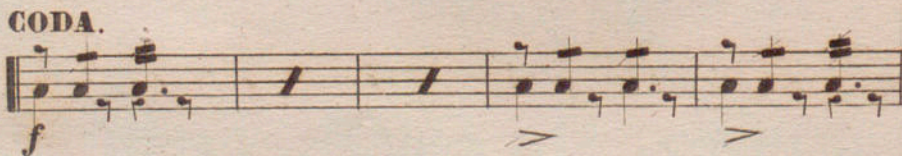


N^o 2. 



N^o 3. 



CODA. 

TAMBOUR et G^{re} CAISSE.

FIN. 8

N^o 4. $\frac{2}{4}$ *f*

25 D.C.

N^o 5. $\frac{2}{4}$ 8

FIN. 1^e et 3^e fois.

D.C.

2^e et 4^e fois.

$\frac{6}{8}$ *f*

D.C. $\frac{2}{4}$