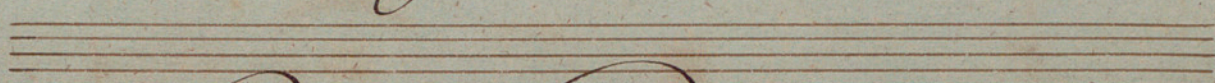
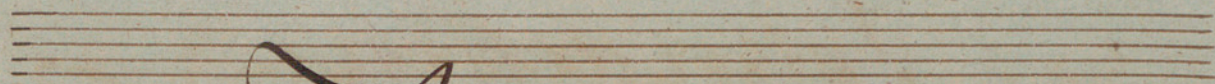
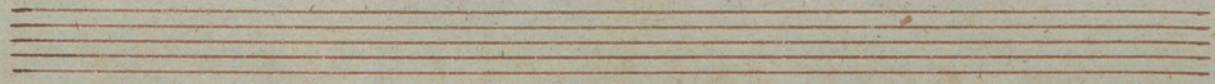
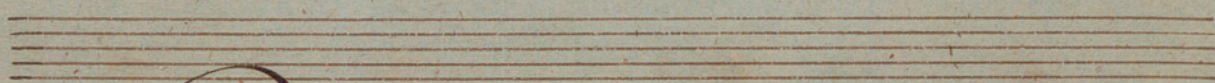




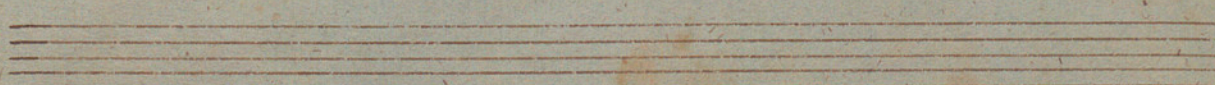
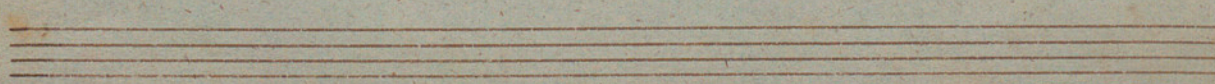
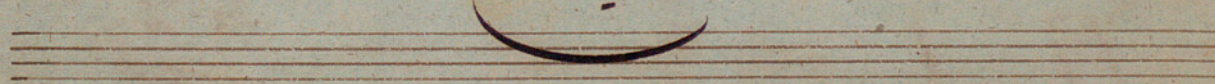
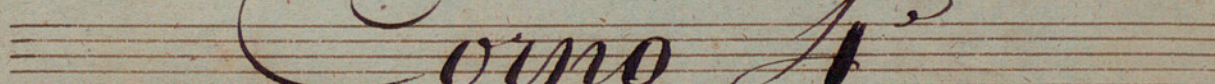
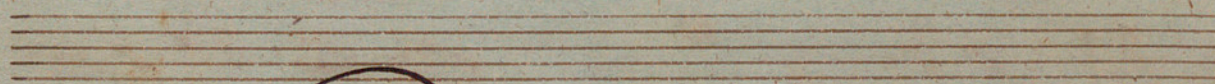
L. Cor



La Cantadora.

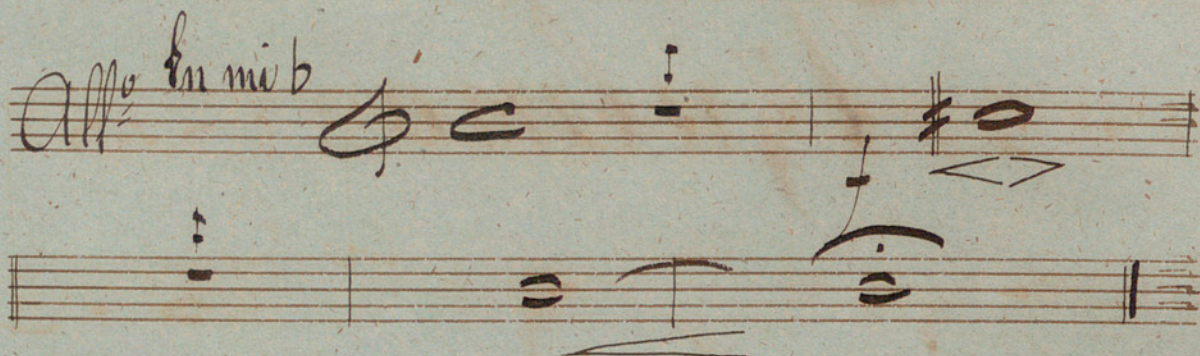


Baile en 3 Actos



Introduction

All^o *En mi b*

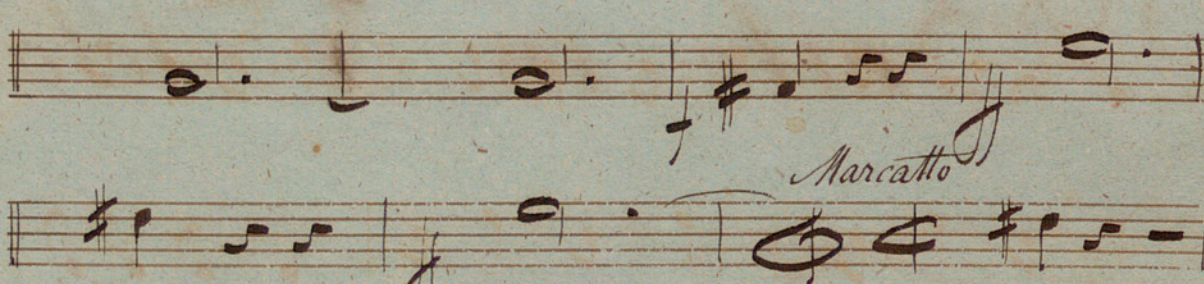


Andante

15



Marcato



23

N^o 1

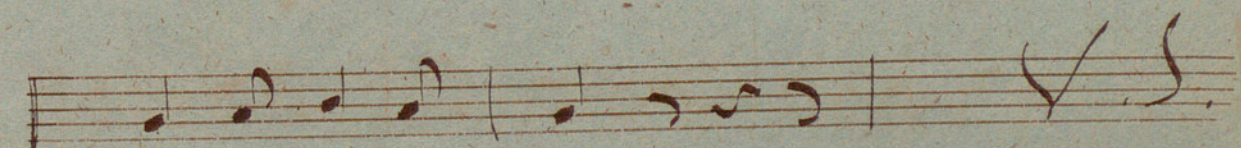
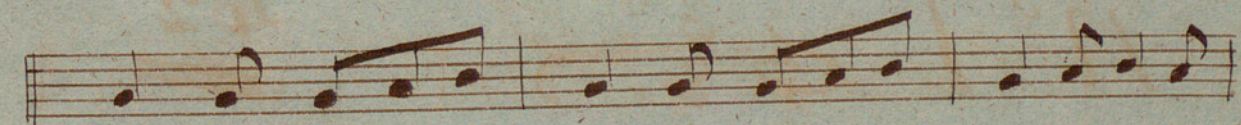
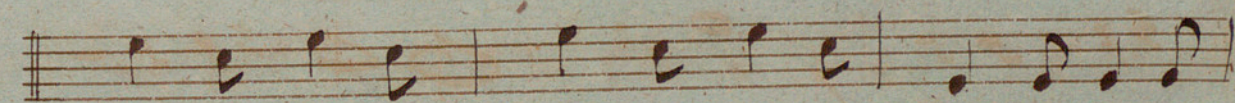
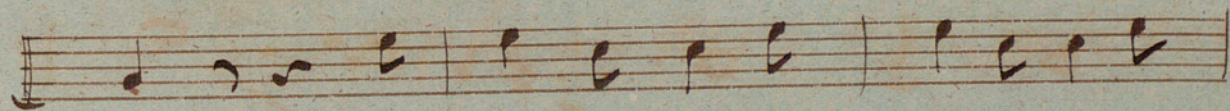
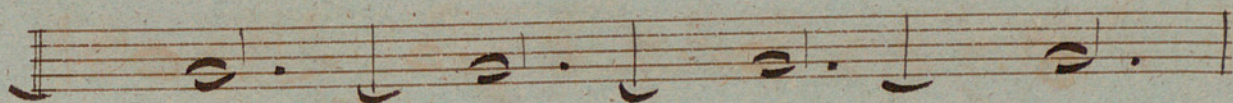
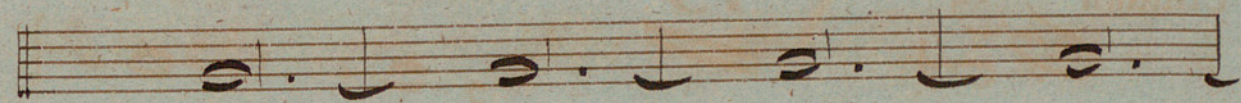
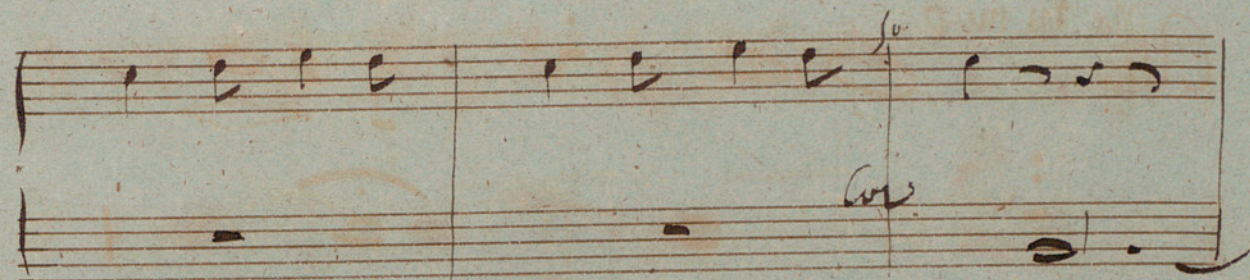
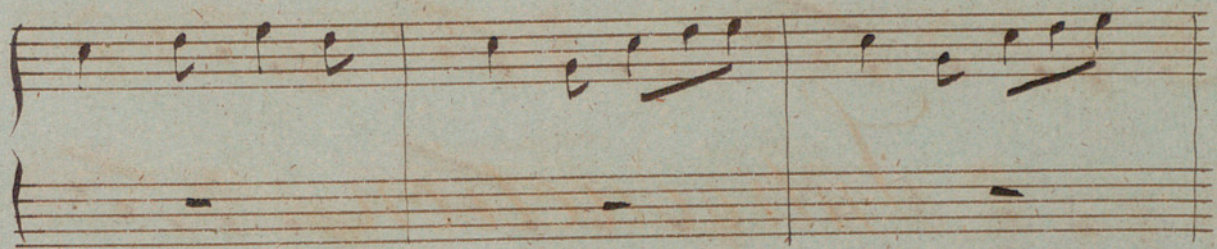
42



Cor Anglais
Coulisse

4 Cor





A handwritten musical score on aged, yellowed paper. The score consists of 12 staves of music. The first three staves are in treble clef with a key signature of one sharp (F#). The fourth staff begins with a treble clef, a double bar line, and a '3' above the staff, indicating a triplet. The fifth staff has a treble clef and a '2' above the staff, indicating a pair. The sixth staff has a treble clef and a '2' above the staff, indicating a pair. The seventh staff has a treble clef and a '2' above the staff, indicating a pair. The eighth staff has a treble clef and a '2' above the staff, indicating a pair. The ninth staff has a treble clef and a '6' above the staff, indicating a sextuplet. The tenth staff has a treble clef and a '6' above the staff, indicating a sextuplet. The eleventh and twelfth staves have treble clefs. The music is written in a cursive, handwritten style with various note values and rests. There are some faint markings and a small stamp in the top right corner of the page.

Handwritten musical score, first system (measures 1-7). The notation is on a single staff with a treble clef. It begins with a sharp sign (F#) and a 7-measure rest. The melody consists of eighth and sixteenth notes, with some beamed pairs. A 7-measure rest appears above the second measure. The system ends with a double bar line.

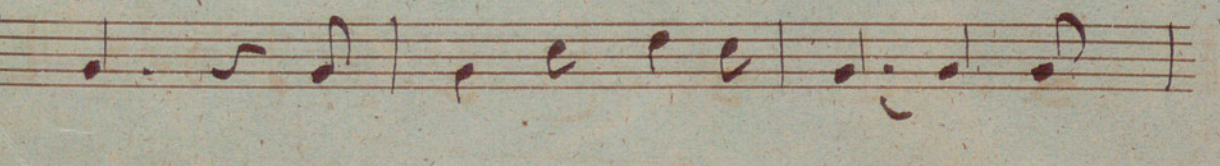
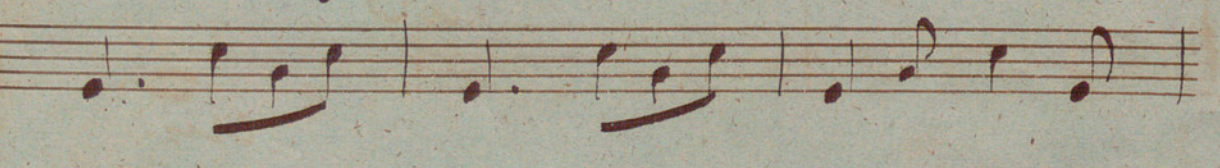
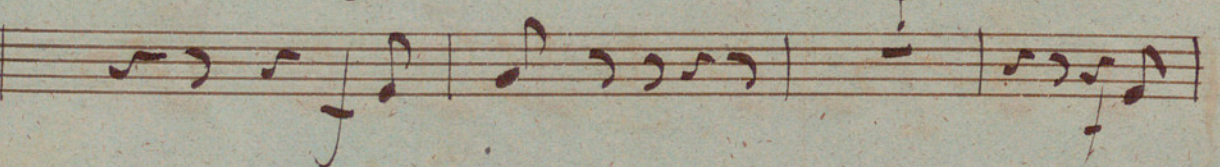
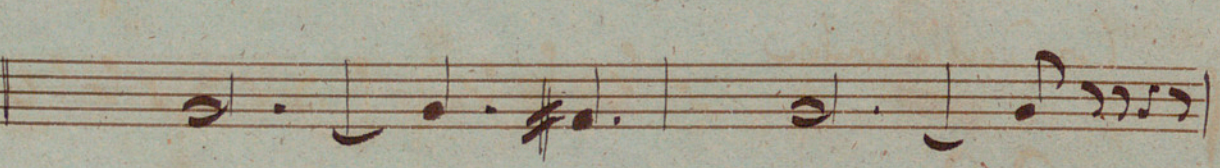
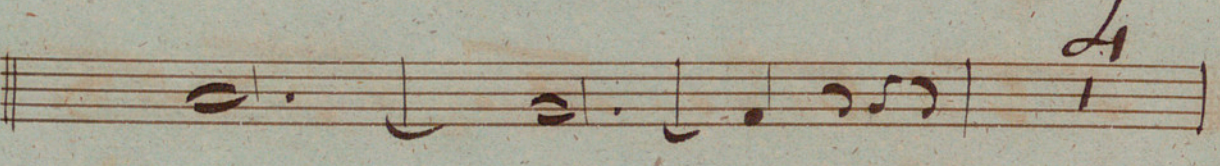
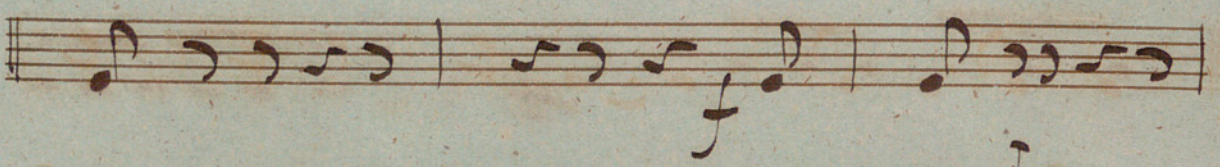
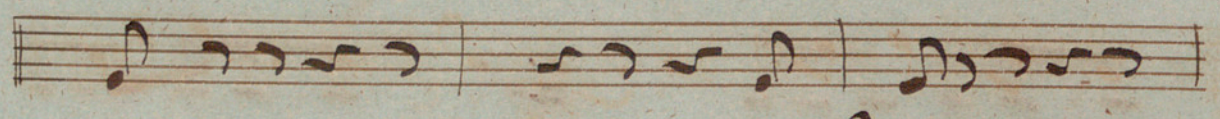
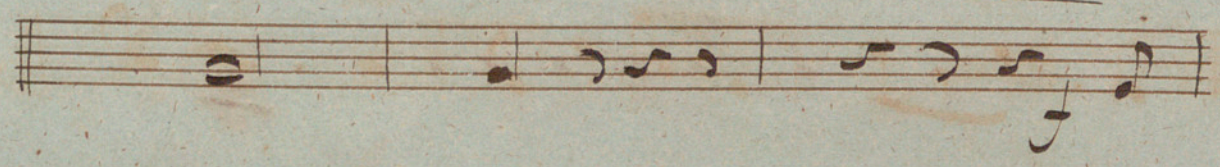
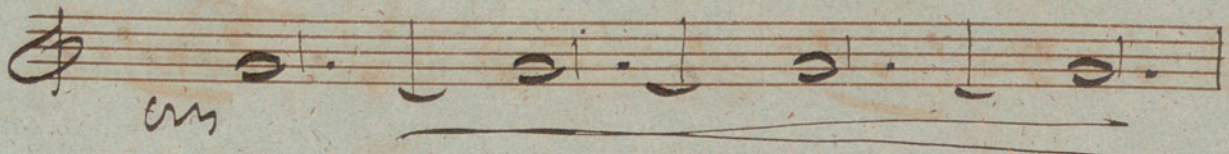
Changez en Sol

12

Handwritten musical score, second system (measures 8-14). The notation is on a single staff with a treble clef. It begins with a double bar line and a sharp sign (F#). The melody continues with eighth and sixteenth notes. There are several accents (>) above notes. A 3-measure rest is indicated above the eighth measure. The system ends with a double bar line.

V. S.

ms



Handwritten musical score for a string quartet, measures 11-14. The notation is in a single system with four staves. The music consists of eighth and sixteenth notes, with some rests. A double bar line is present at the end of measure 14.

14

Cor Dan la Cordis

Handwritten musical score for a cor, measures 15-18. The notation is in a single system with two staves. The top staff contains the melody, and the bottom staff contains rests. A double bar line is present at the end of measure 18.

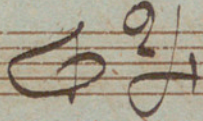
Cor

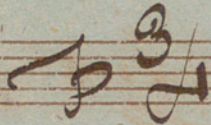
28

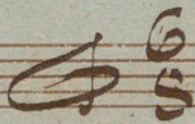
Handwritten musical score for a cor, measures 19-22. The notation is in a single system with two staves. The top staff contains the melody, and the bottom staff contains rests. A double bar line is present at the end of measure 22.

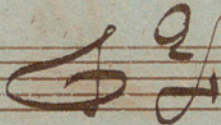
Handwritten musical score for a cor, measures 23-26. The notation is in a single system with two staves. The top staff contains the melody, and the bottom staff contains rests. A double bar line is present at the end of measure 26.

290

N^o 2  41

N^o 3  80

N^o 4  28

N^o 5  39

Sas de Chasseresses

N^o 6

Empty musical staff

Empty musical staff

Empty musical staff


Empty musical staff

Empty musical staff

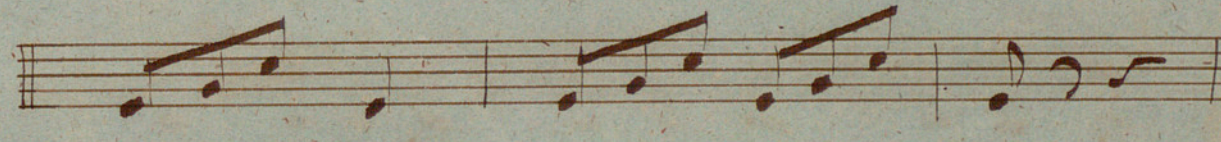
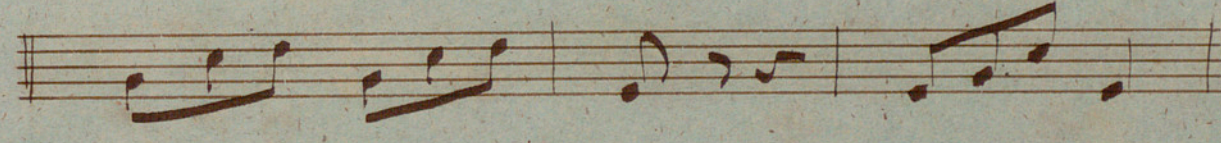
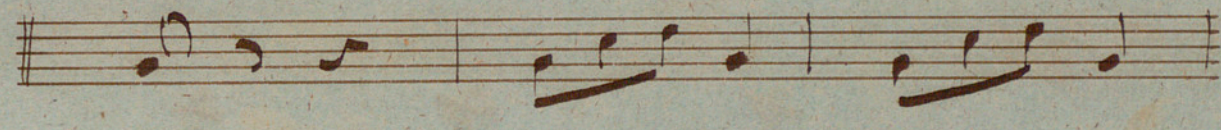

Empty musical staff

N^o 7 *En Re'*
All' agitato C^2 50

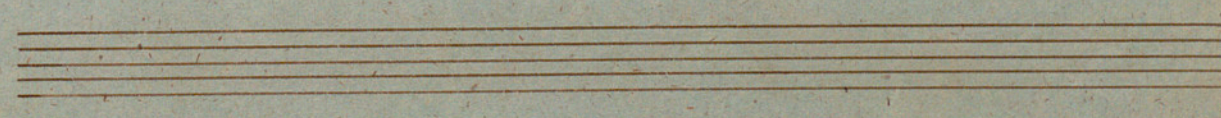
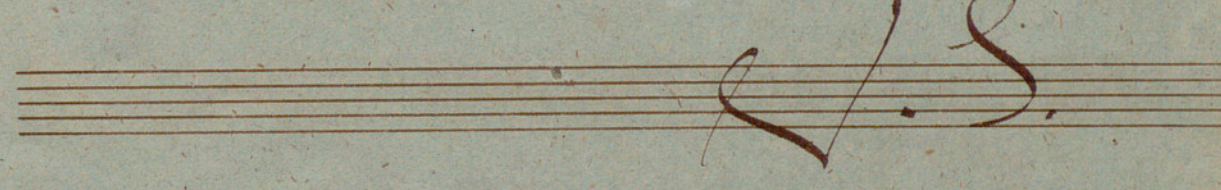
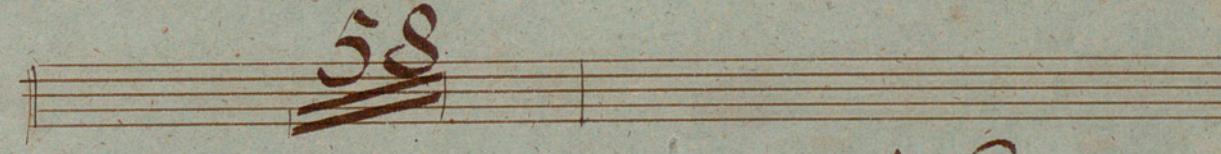
violin
Cor



Cor
fortissimo

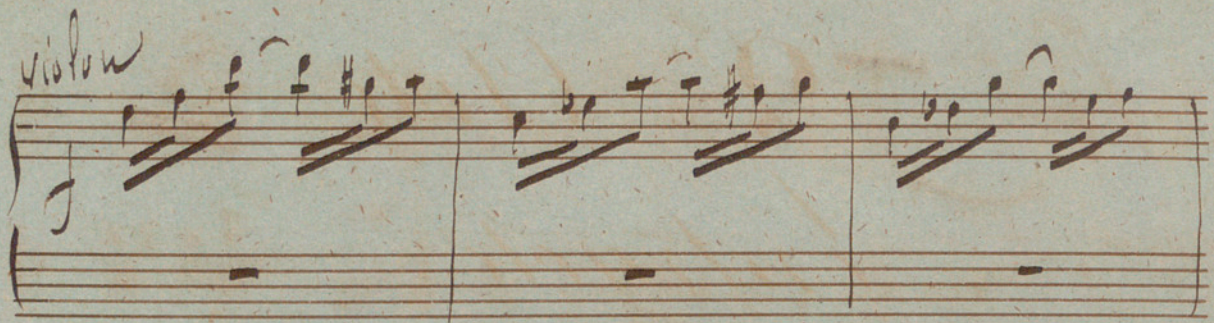


58

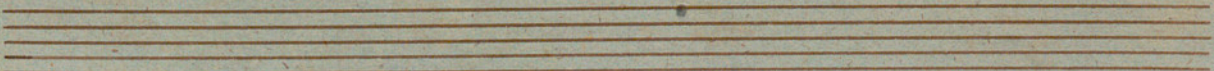
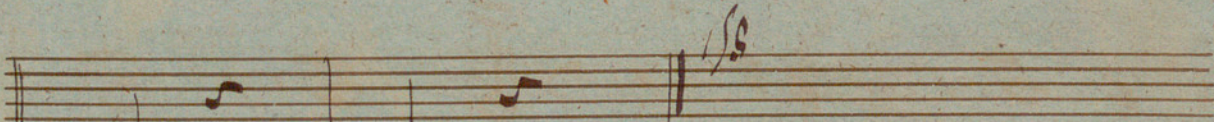
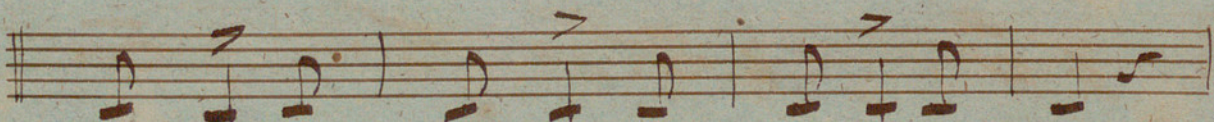
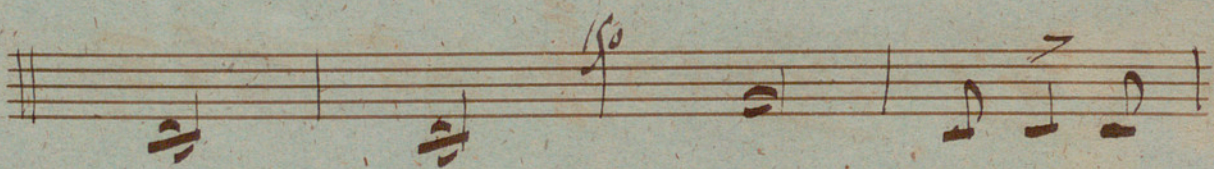
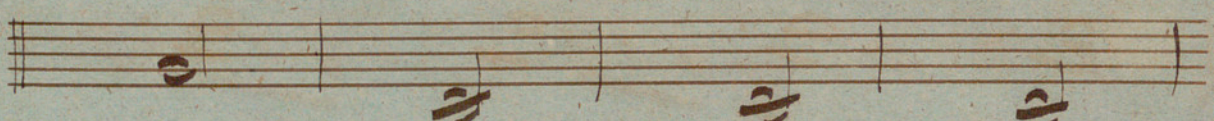
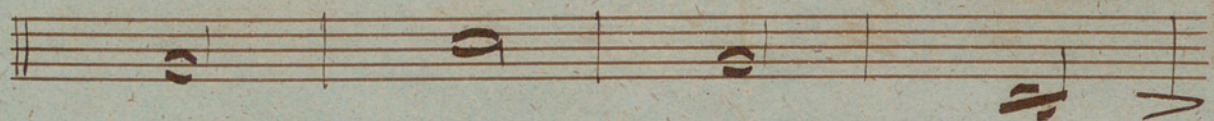
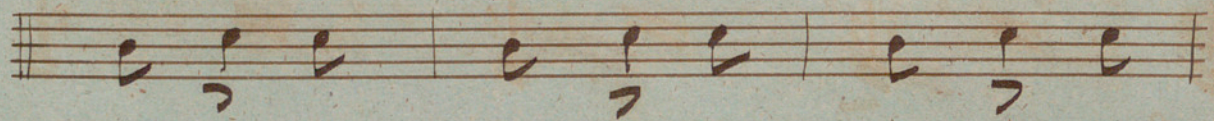
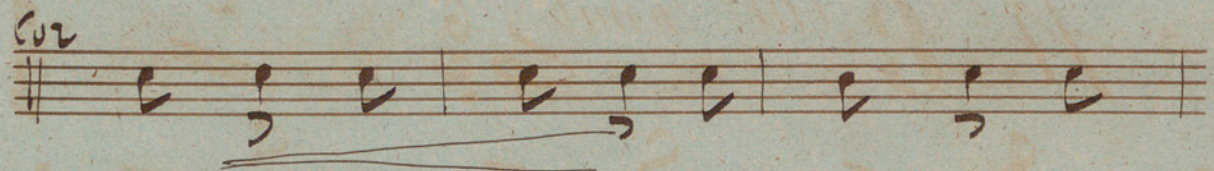


V.S.

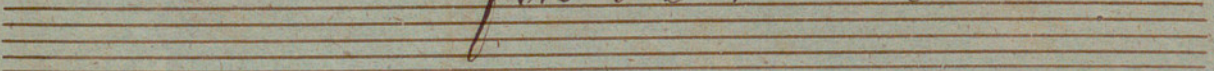
Violon



Cor

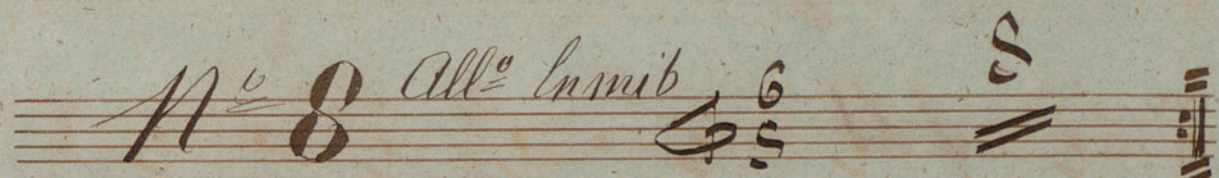


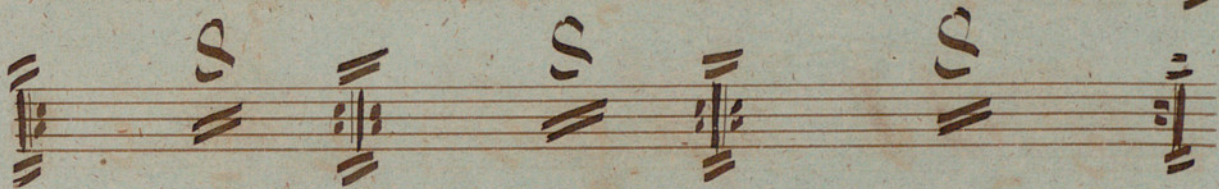
fin du 1^{er} acte



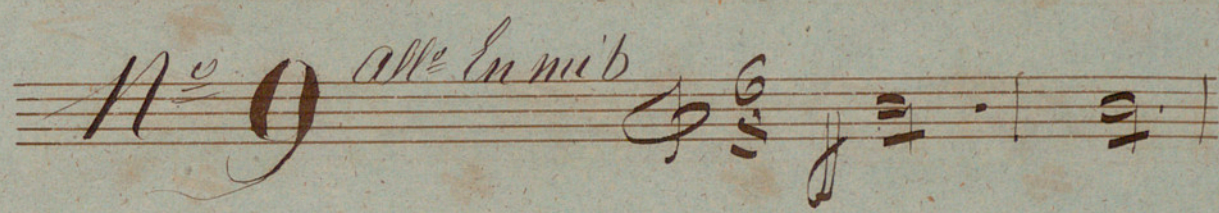
2^{me} Clote

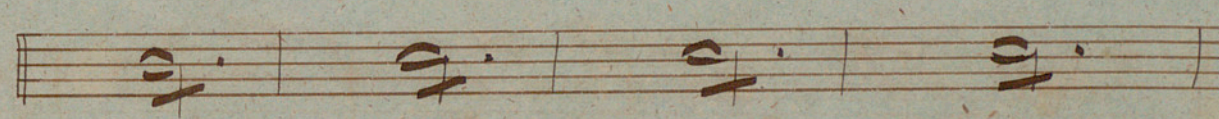
Extrait

N^o 8 *All^o En mi b* 

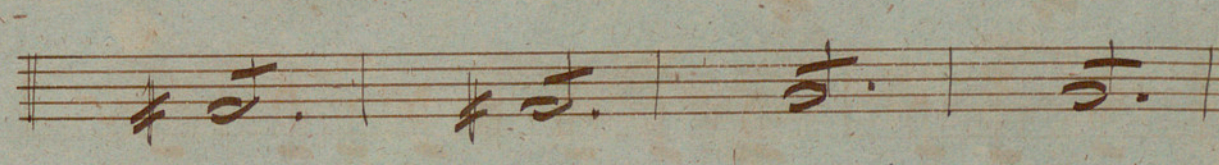


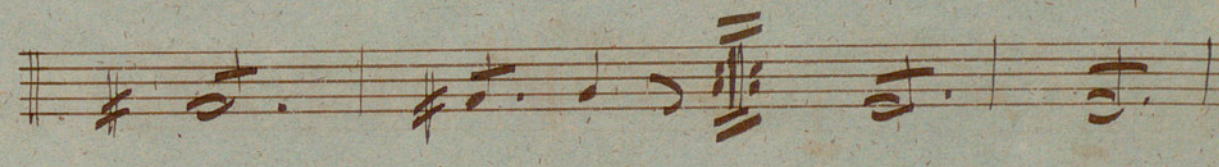
Romance 


N^o 9 *alle En mi b* 

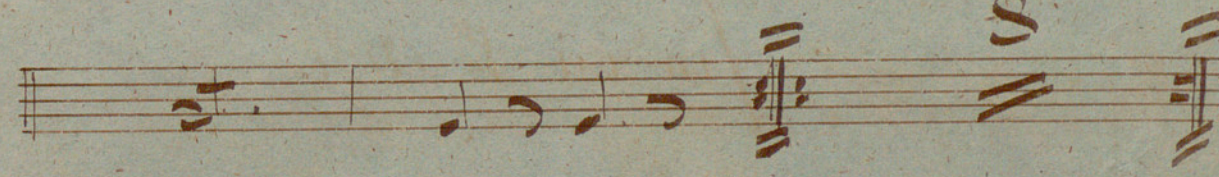












55

Handwritten musical notation for the piano introduction of No. 10. It consists of two staves. The first staff has a treble clef and a key signature of one sharp (F#). The second staff has a bass clef and a key signature of one sharp (F#). The notation includes several measures of chords and single notes, with some measures marked with a stylized 'S' above them. A measure in the second staff is marked with the number '64'.

N^o 10 Allegretto Grazioso $\frac{6}{8}$ $\frac{3}{4}$

N^o 11 Allegretto En fa $\frac{3}{4}$ 12

Main musical score for No. 10 and No. 11. It consists of ten staves of handwritten musical notation. The first two staves are for No. 10, and the remaining eight staves are for No. 11. The notation includes various rhythmic values, accidentals, and phrasing marks. The key signature for No. 10 is one sharp (F#), and for No. 11 it is natural (F). The time signature for No. 10 is 6/8, and for No. 11 it is 3/4. The piece concludes with a double bar line.

11

A handwritten musical score consisting of 11 staves. The notation is in brown ink on aged, yellowish paper. The score begins with a treble clef and a key signature of one sharp (F#). The first staff has a double bar line at the beginning and a fermata-like symbol above the first measure. The music is written in a style characteristic of 18th or 19th-century manuscript notation, featuring various note values, rests, and dynamic markings. There are several instances of slurs and accents. The score concludes with a double bar line and a repeat sign on the eleventh staff. The initials 'S.S.' are written in the bottom right corner of the page.

S.S.

Handwritten musical notation on a single staff, featuring a treble clef and a key signature of one sharp (F#).

Handwritten musical notation on a single staff, continuing the piece with various note values and rests.

Handwritten musical notation on a single staff, showing a continuation of the melodic line.

Handwritten musical notation on a single staff, including a dynamic marking of *mp* (mezzo-piano).

Handwritten musical notation on a single staff, featuring a key signature change to two sharps (F# and C#).

Handwritten musical notation on a single staff, starting with a double bar line and a fermata-like symbol above the staff.

Handwritten musical notation on a single staff, continuing the melodic development.

Handwritten musical notation on a single staff, showing a continuation of the piece.

Handwritten musical notation on a single staff, featuring a double bar line and a fermata-like symbol above the staff.

Handwritten musical notation on a single staff, including a dynamic marking of *mf* (mezzo-forte) and a key signature change to one sharp (F#).

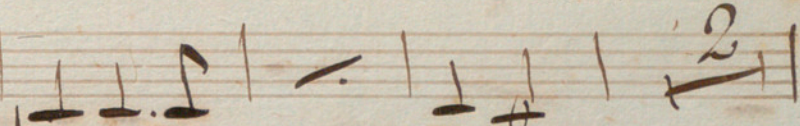
Handwritten musical notation on a single staff, showing a continuation of the melodic line.

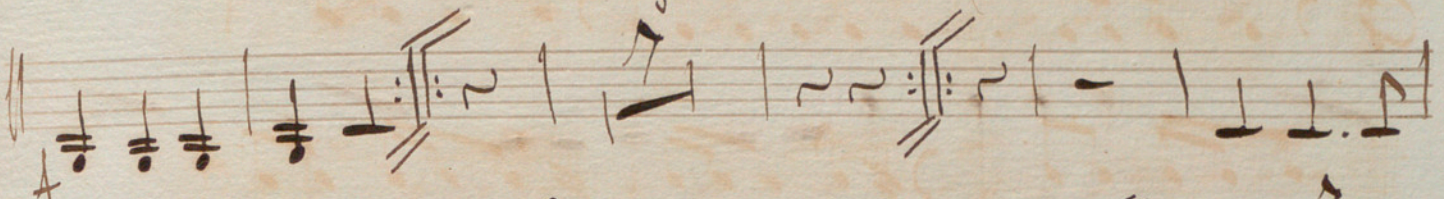
Handwritten musical notation on a single staff, featuring a treble clef and a key signature of one sharp (F#).

Handwritten musical notation on a single staff, concluding the piece with a double bar line and a fermata-like symbol.

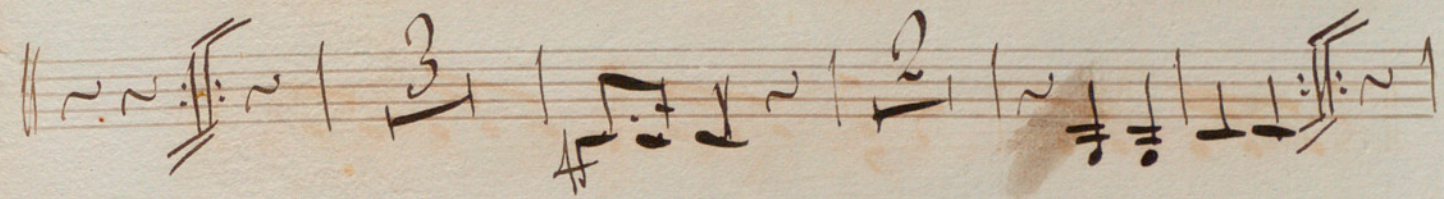
Marmorea. //

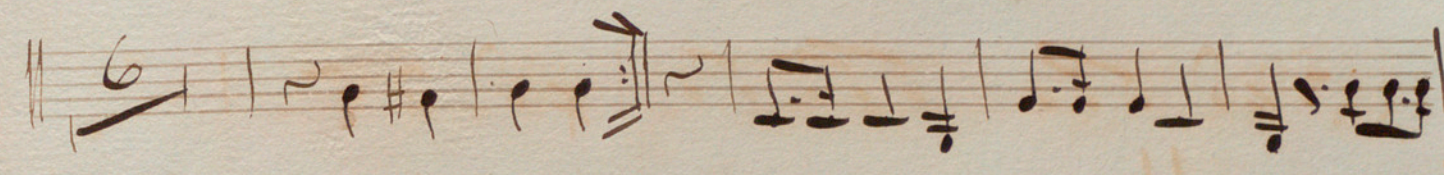
Corno 2^o //

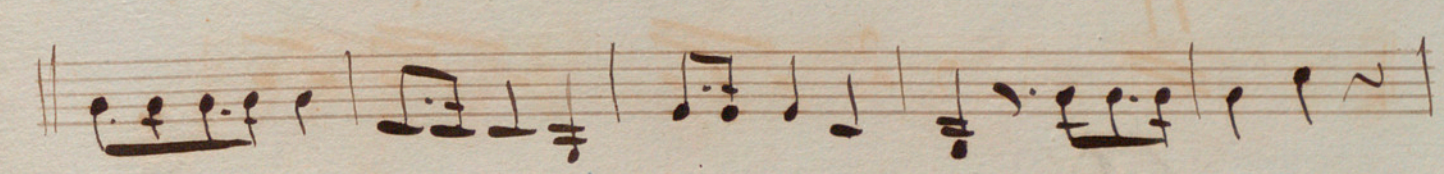
In Sol 18 $\frac{3}{4}$ 2 1 - |  | 2

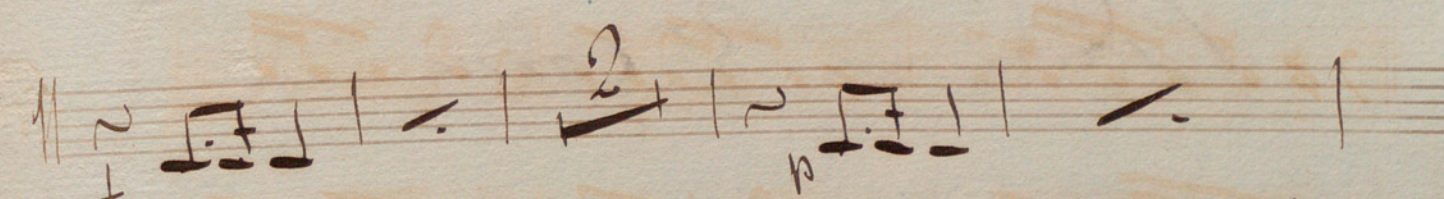


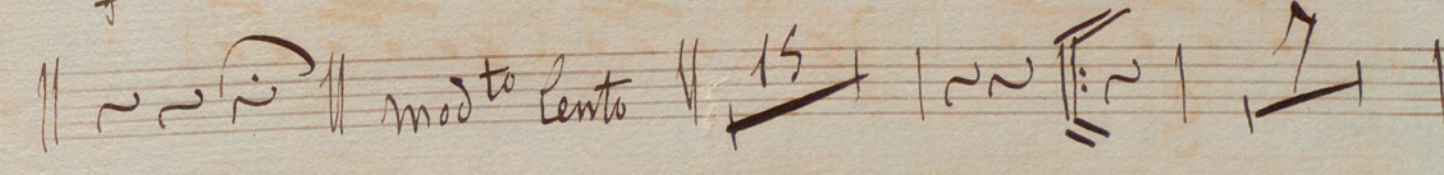


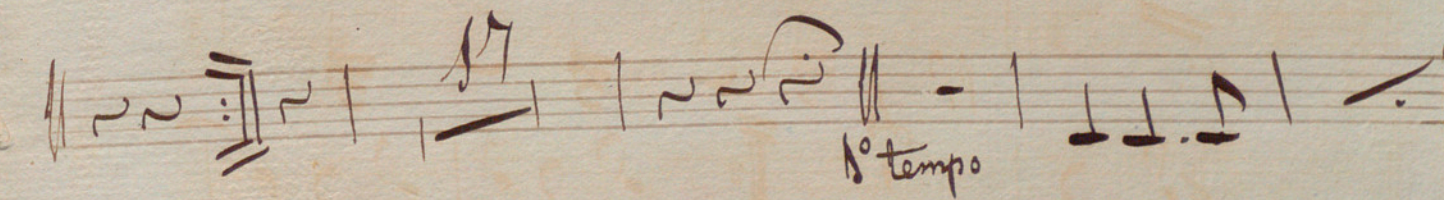




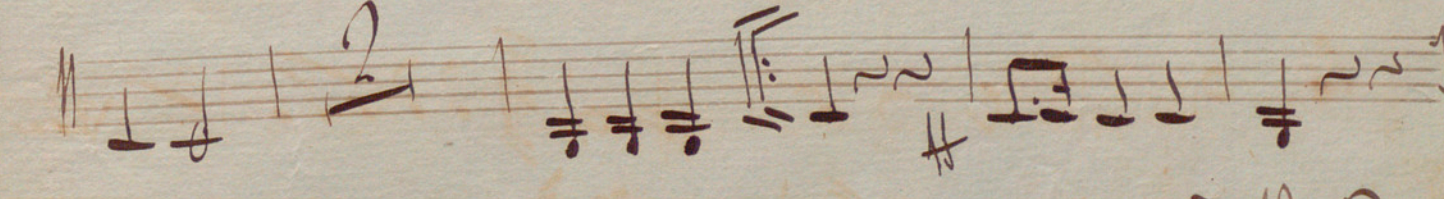














Handwritten musical notation on three staves. The first staff begins with a treble clef, a key signature of one sharp (F#), and a tempo marking "presto". It contains several measures of music with notes and rests. The second staff starts with a "2" above the first measure, indicating a second ending. The third staff continues the musical notation with various note values and rests.

Paceoni al 3^o Corno

Handwritten musical score consisting of five staves. The first four staves contain melodic lines with various rhythmic values and accidentals. The fifth staff contains a few notes and a double bar line with the number '103' written above it. A large 'X' is drawn across the entire section.

N^o 12 *All^o* *magroioso* *9* *53*
N^o 13 *Moderato* *En mi b* *9*

Handwritten musical score consisting of four staves. The first two staves feature a sequence of notes with sharp signs (#) above them. The third and fourth staves contain a melodic line with a tempo marking *all^o* and a time signature of 9/8.

V.S.

Musical staff with treble clef, key signature of one sharp (F#), and a 7-measure rest.

Musical staff with treble clef, key signature of one sharp, and a 7-measure rest.

Musical staff with treble clef, key signature of one sharp, and a 10-measure rest. *all^o* 10 *all^{to}* 5 *all^o* 10

Musical staff with treble clef, key signature of one sharp, and a 6-measure rest. *and^{te}* 6 *all^o* 10 *all^{marcato}* 5

Musical staff with treble clef, key signature of one sharp, and a 10-measure rest. *all^o* 10 *all^o* 2

Musical staff with treble clef, key signature of one sharp, and a 10-measure rest. *all^o* 10 *maestoso* 19

Musical staff with treble clef, key signature of one sharp, and a 15-measure rest. *N^o 14* *and^{te}* 15

Musical staff with treble clef, key signature of one sharp, and a 2-measure rest. *N^o 15. tacet* 2

Musical staff with treble clef, key signature of one sharp, and a 2-measure rest. *N^o 16* *in da* 2

Musical staff with treble clef, key signature of one sharp, and a 2-measure rest.

Musical staff with treble clef, key signature of one sharp, and a 2-measure rest.

Pavedu' al 3^o Corno

in fa.
No. 16

This page contains a handwritten musical score for a piece titled "No. 16" in the key of F major, marked "in fa." The score is written on ten staves. The first staff begins with a treble clef, a 3/4 time signature, and a key signature of one sharp (F#). The music consists of a series of rhythmic patterns, including eighth and sixteenth notes, and rests. Dynamic markings such as *f* (forte) and *p* (piano) are used throughout. The score includes various musical notations, such as slurs, ties, and repeat signs. The final staff is mostly blank, with a few faint markings at the end.

La Gitana

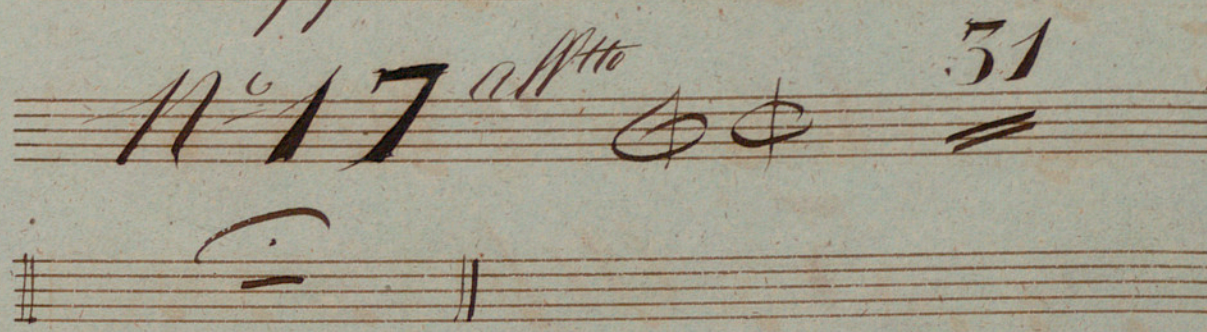
~~Appres la Gitana n° 16~~

~~N° 16 *Gravisse* 23~~

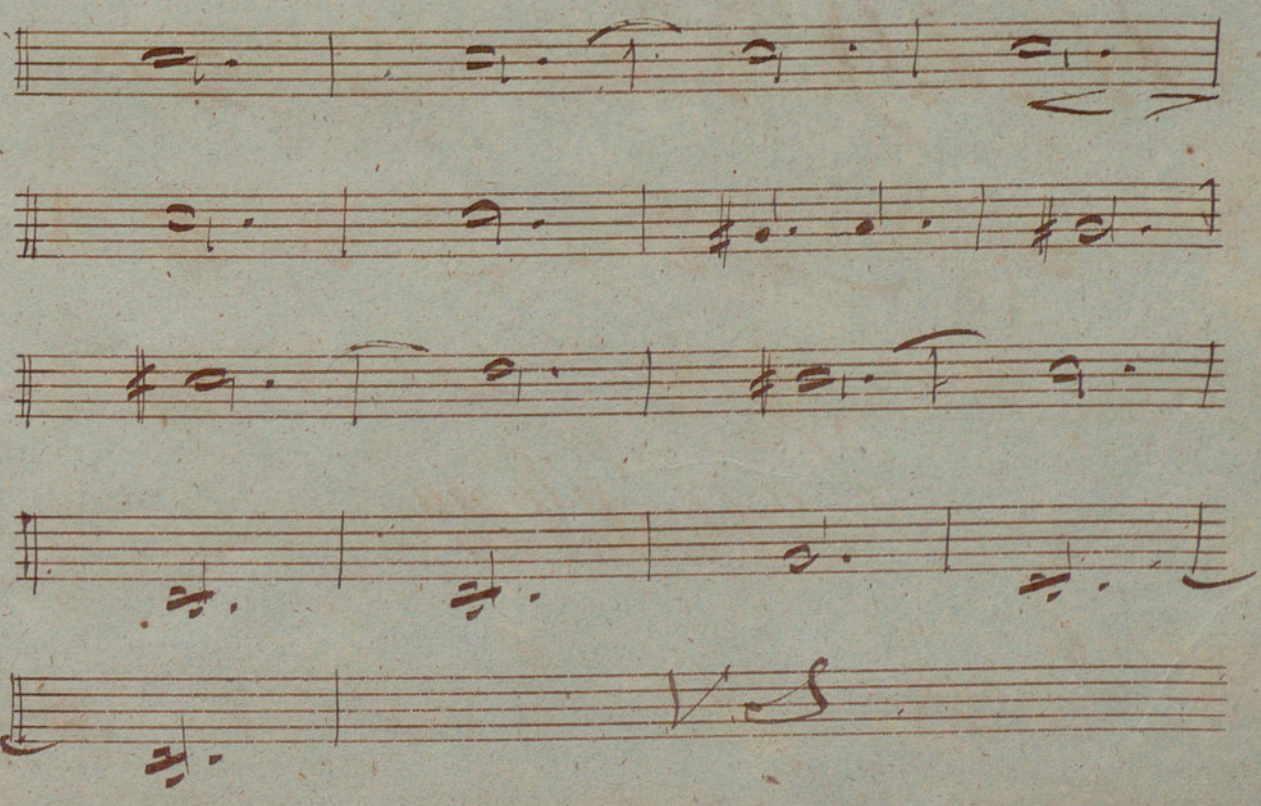
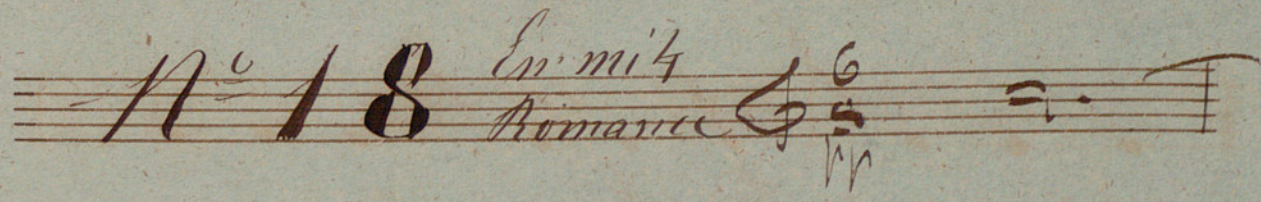


Appres le Divertissement n° 17

N° 17 *allegro* 31



N° 18 *En mi 4*
Romance



Handwritten musical notation on four staves. The first staff begins with a treble clef and a common time signature. The notation consists of various note values, including quarter and eighth notes, with some notes beamed together. There are also some rests and dynamic markings.

Fin du 2^e Acte

3^e Acte

Entr'acte

N^o 19 *En sol*

Handwritten musical notation for N° 19. It starts with a treble clef and a common time signature. The notation includes several notes, some with stems pointing upwards, and some with stems pointing downwards.

Handwritten musical notation on a single staff, continuing the piece N° 19. It features several notes with stems pointing upwards and downwards.

19 10 27

Handwritten musical notation for measures 19, 10, and 27. Each measure is indicated by a double bar line and a measure number. The notation includes notes and rests.

Balabiti

En fa

Handwritten musical notation for Balabiti. It begins with a treble clef and a common time signature. The notation includes several notes, some with stems pointing upwards and downwards.

Handwritten musical notation on a single staff, continuing the piece Balabiti. It features several notes with stems pointing upwards and downwards.

Pas de Deux

All^o *attacato* *Enlak* C 7

and^{te} C 7

Larghetto 9 16

C 7

C 7

C 7

C 7

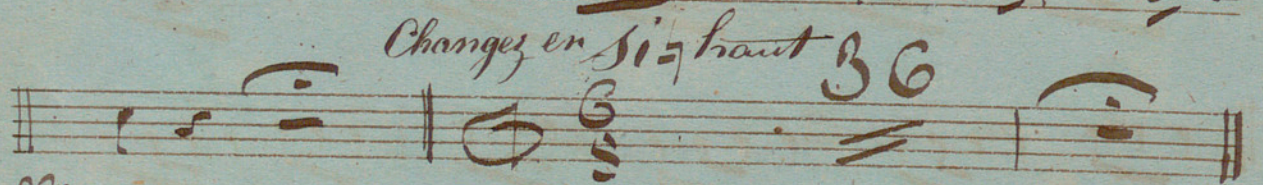
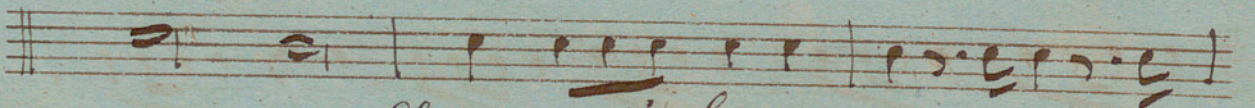
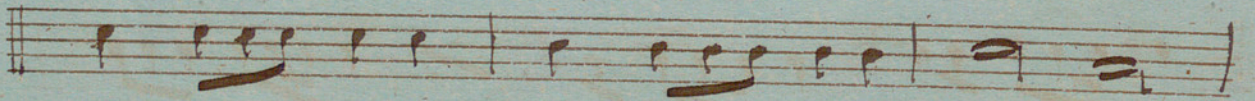
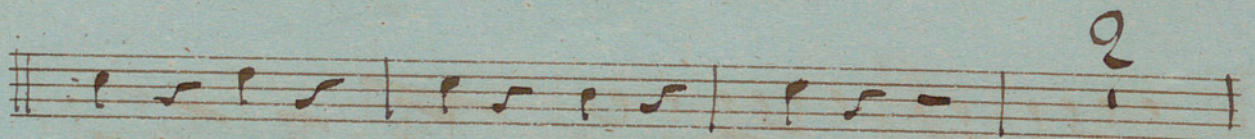
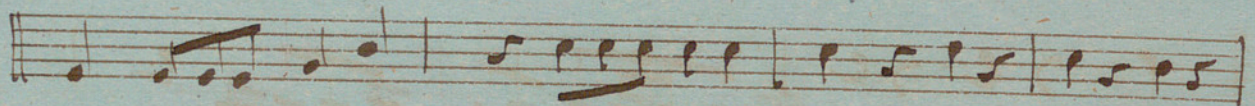
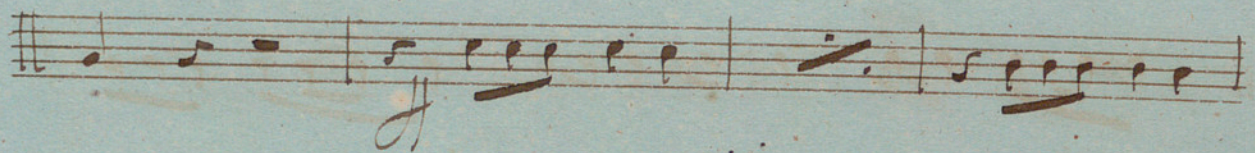
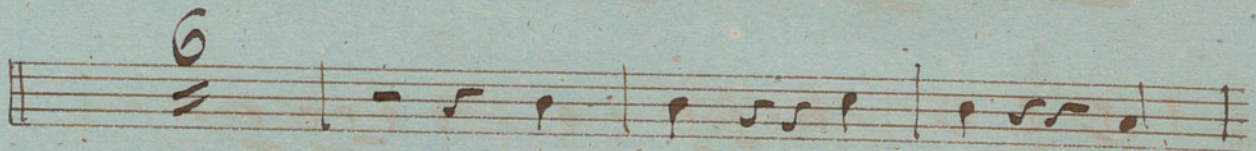
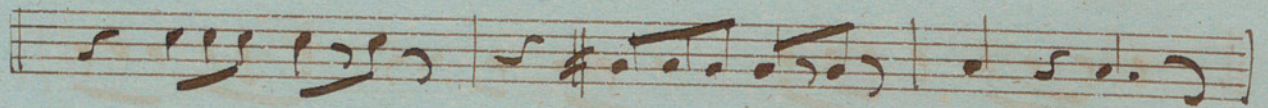
C 7

Lento C 7

all^o mod^o C 7

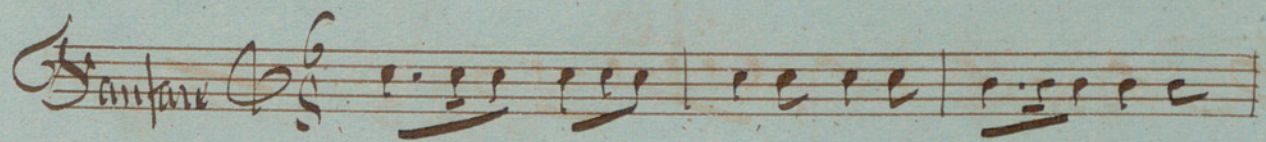
C 7

V.S.

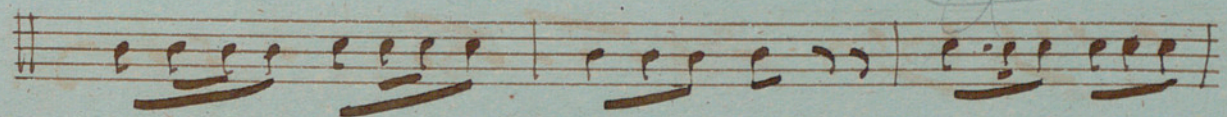


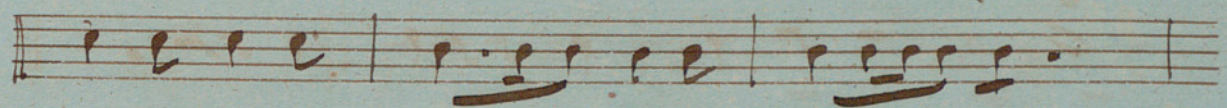
allegro

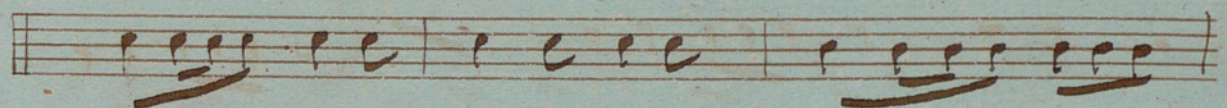


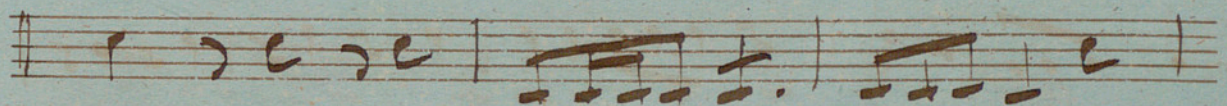
Santare 

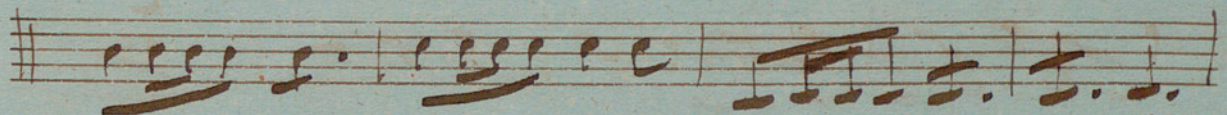




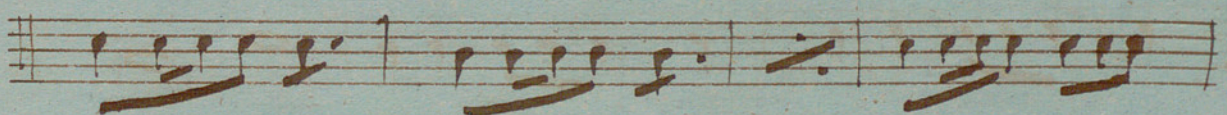





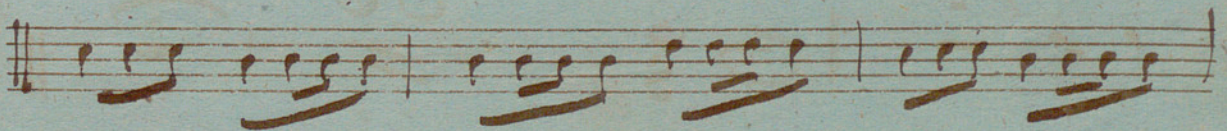


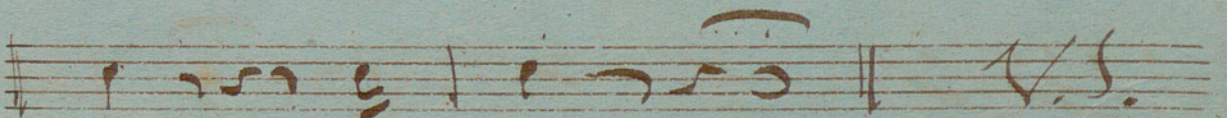












Coda $\frac{3}{4}$ 16

Handwritten musical score for a Coda section, numbered 16. The score consists of 11 staves of music. The first staff begins with the word "Coda" and a treble clef with a 3/4 time signature. The music is written in a historical style with various note values and rests. The second staff starts with a large "7" above the first measure. The notation includes eighth and sixteenth notes, rests, and some slurs. The final staff is empty.

A system of six musical staves with handwritten notation. The notation includes notes, rests, and bar lines. A large diagonal X is drawn across the entire system, indicating that this section of the manuscript is crossed out or unused.

Cantabile
~~4/4~~

La

A system of five musical staves with handwritten notation. The notation includes a treble clef, notes, rests, and bar lines. The word "Cantabile" is written above the first staff, and "La" is written to the left of the first staff. The time signature is written as "4/4" and is crossed out with a line.

lib
Var^{ta}

A system of two musical staves with handwritten notation. The notation includes a treble clef, notes, rests, and bar lines. The word "lib" is written above the first staff, and "Var^{ta}" is written above the first staff.

2^{me} Variation *all^{to} En Ré'* *♩ C*

Handwritten musical notation for the 2nd variation, consisting of eight staves of music. The notation includes various note values, rests, and bar lines, with a dynamic marking *mf* at the beginning.

3^e Variation *♩ 3/4* *62*

1^a Tacet

5^e Variation *En Ré'* *♩ 6/8*

Handwritten musical notation for the 5th variation, consisting of two staves of music. The notation includes various note values and rests.

Handwritten musical notation for the first system, consisting of six staves. The notation includes various notes, rests, and bar lines, with some notes beamed together. A small '2' is written above the second staff.

6 Variation $\frac{2}{4}$ 16

16

Handwritten musical notation for the second system, starting with a double bar line and a key signature change. It includes a double bar line and a key signature change.

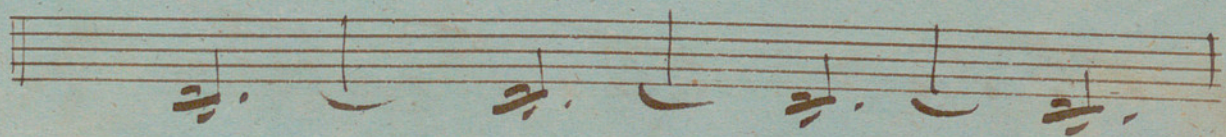
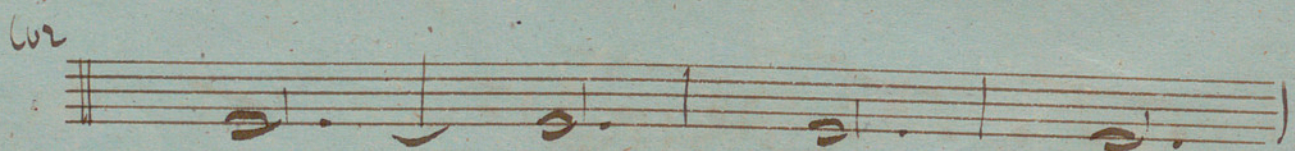
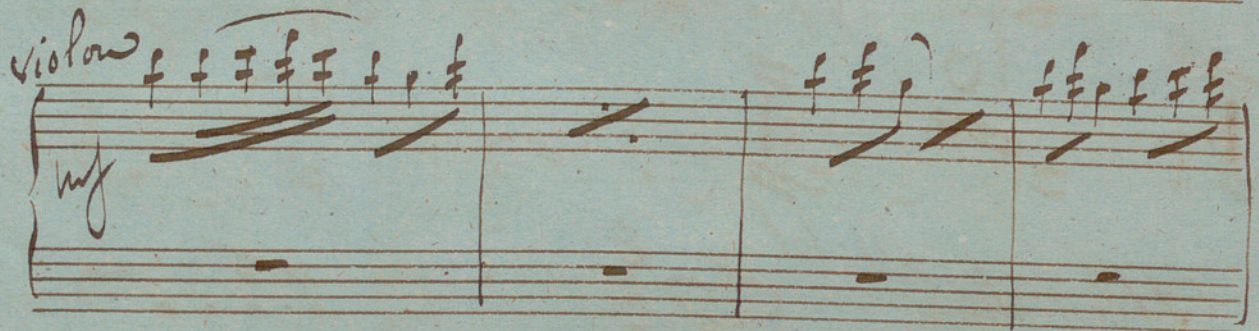
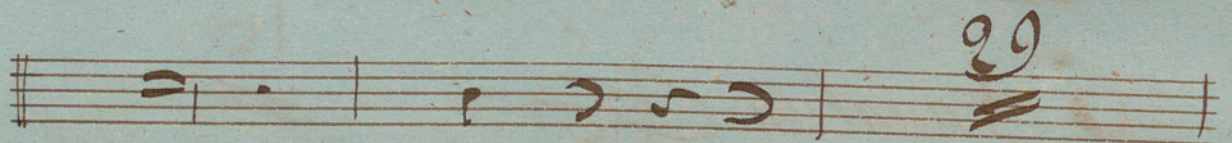
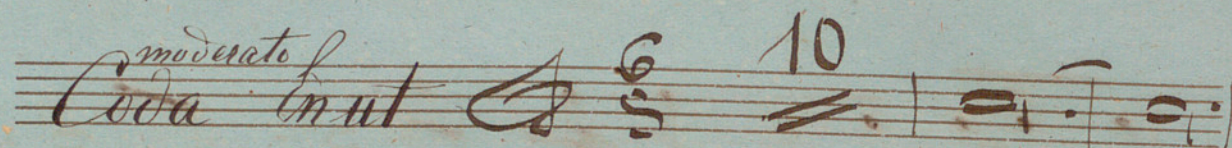
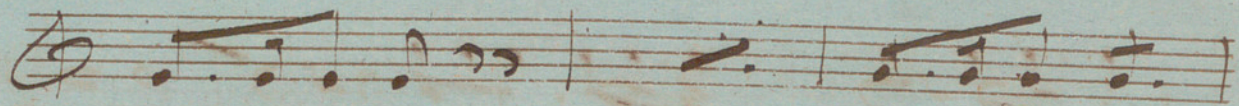
Allegretto *In sol* $\frac{6}{8}$ 2

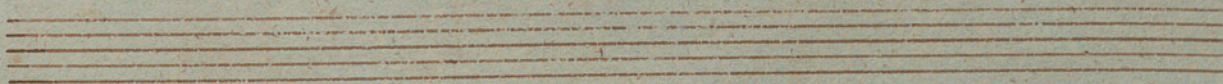
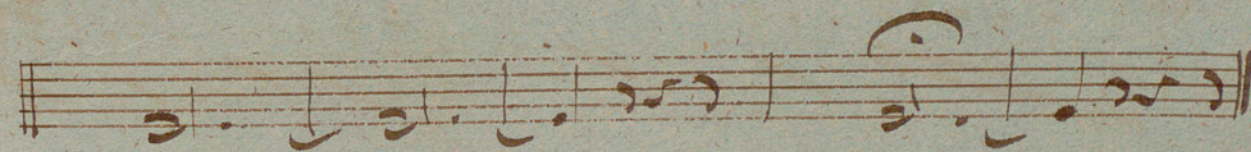
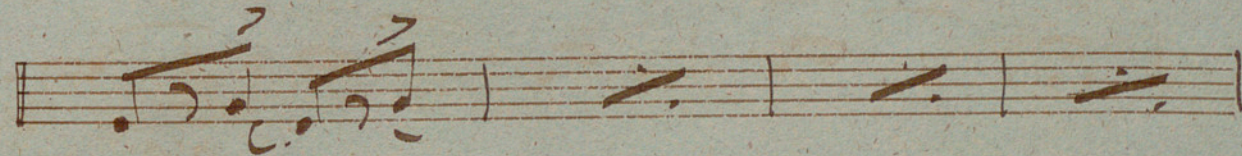
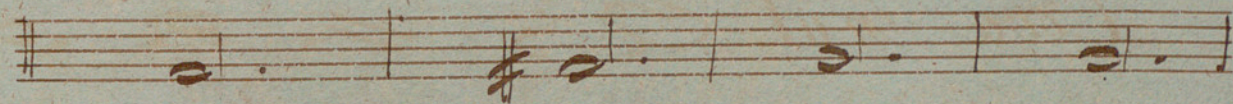
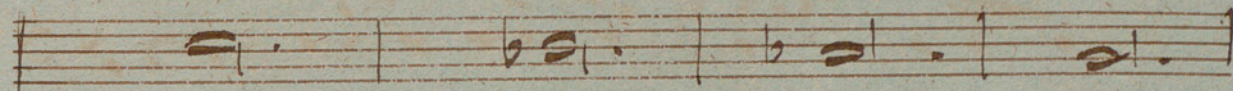
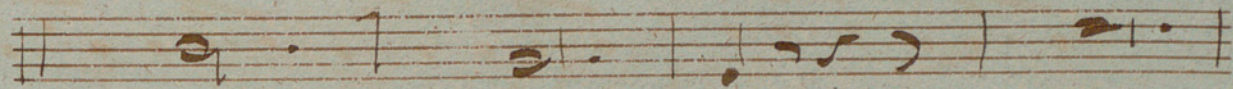
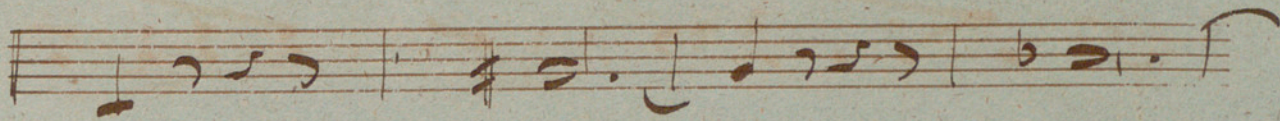
Handwritten musical notation for the third system, including the tempo and performance instructions. It starts with the tempo marking *Allegretto* and the performance instruction *In sol*, followed by a treble clef, a 6/8 time signature, and a small '2' above the staff.

Handwritten musical notation for the fourth system.

Handwritten musical notation for the fifth system.

Handwritten musical notation for the sixth system, ending with a double bar line and a key signature change. It includes a double bar line and a key signature change.





Fin

