



Clarinete,

La Estrella

&

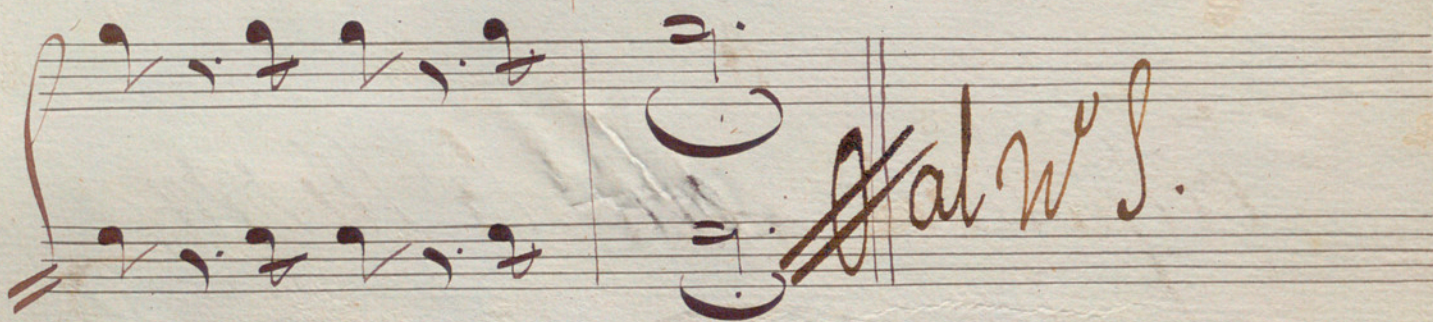
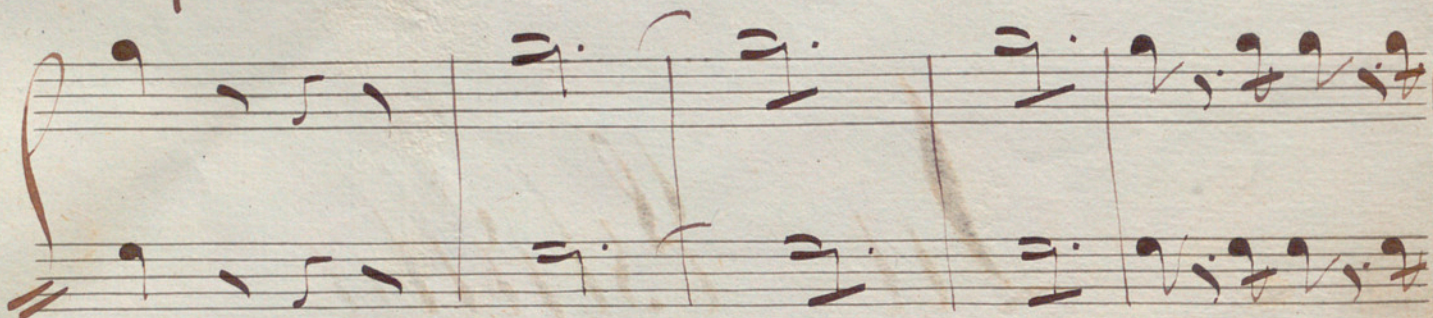

Tragedia en la Tierra

Opera en un acto



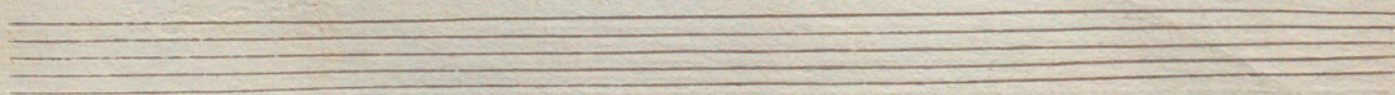
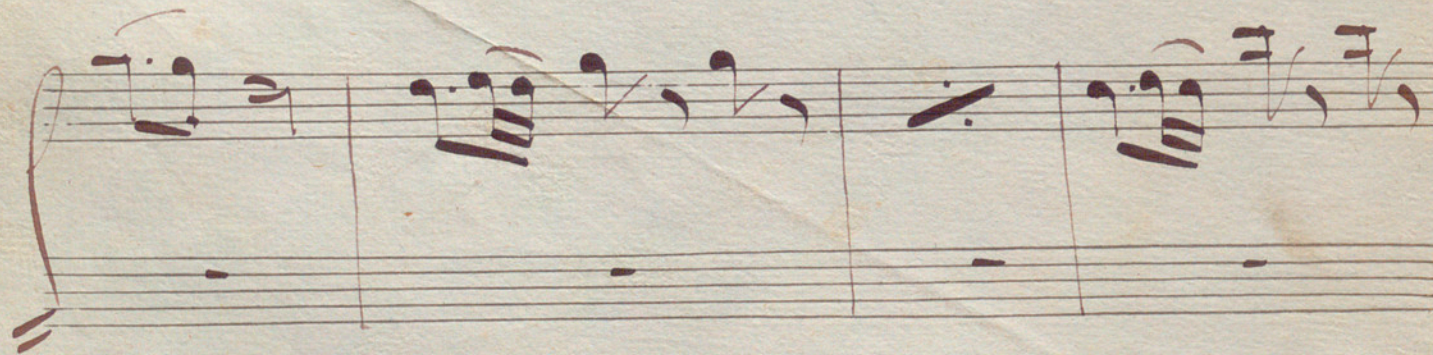
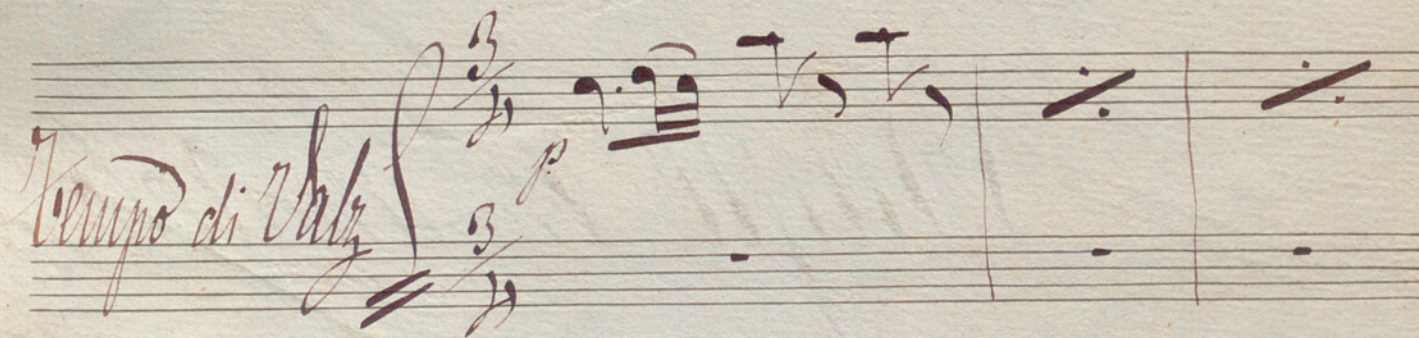
*en Si b.* *Introduccion*

*allegro*  $\text{C} \flat \frac{6}{8}$



*al W. S.*

*Tempo di Valz*  $\frac{3}{4}$









Handwritten musical notation on two staves. The top staff contains a melodic line with eighth and sixteenth notes. The bottom staff contains a bass line with similar rhythmic values. A double bar line is present in the middle of the system.

Handwritten musical notation on two staves. The top staff continues the melodic line. The bottom staff contains a bass line. A double bar line is present in the middle of the system.

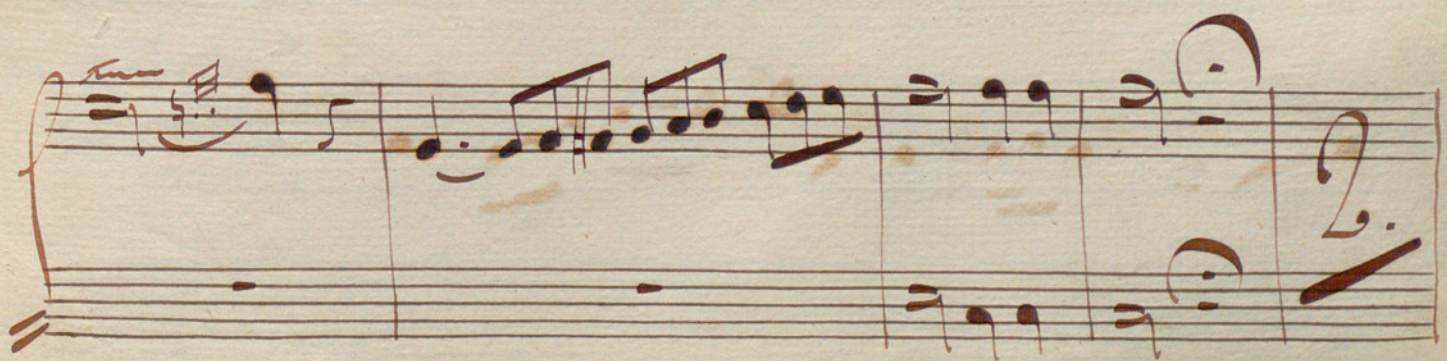
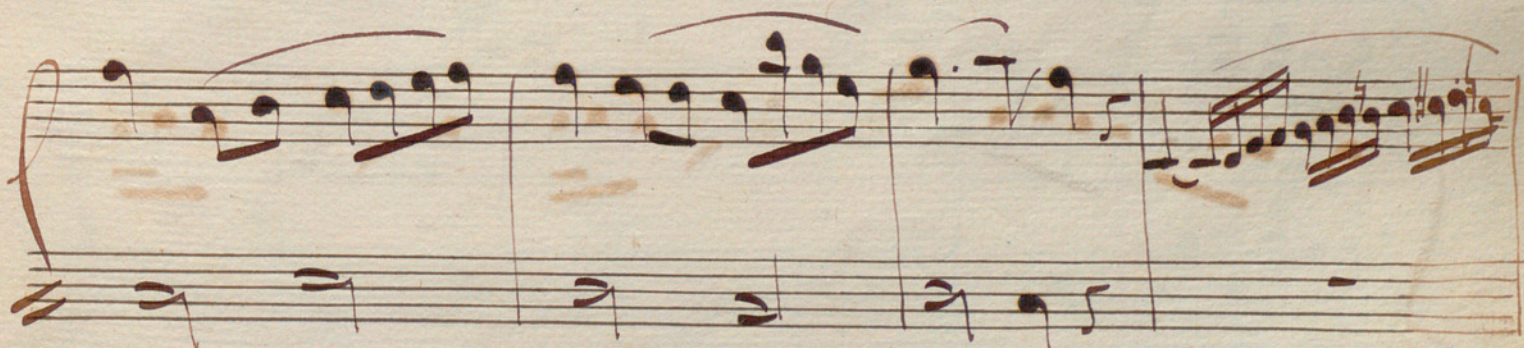
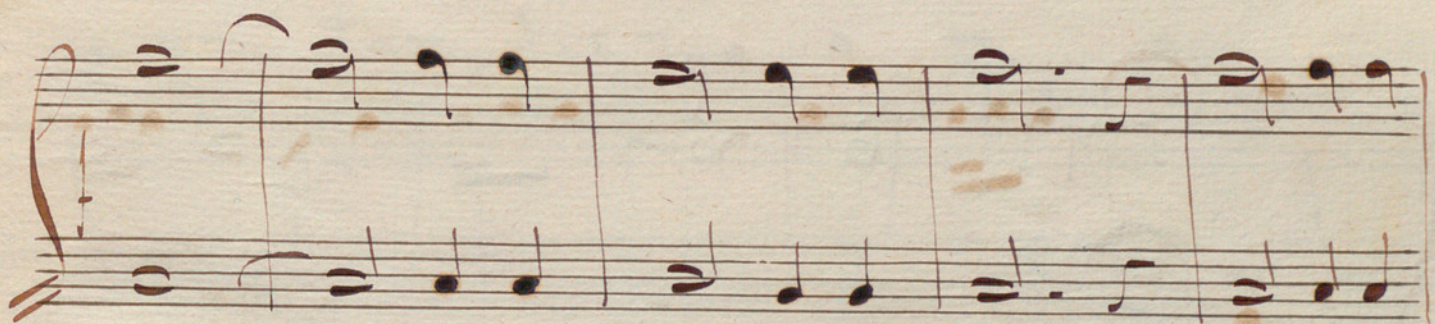
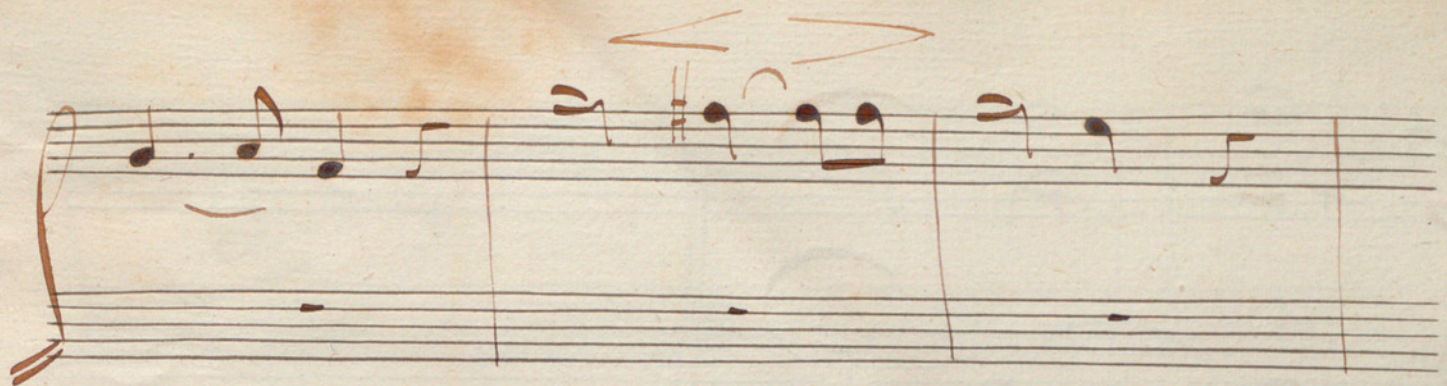
Handwritten musical notation on two staves. The top staff contains a melodic line. The bottom staff contains a bass line. A double bar line is present in the middle of the system.

Handwritten musical notation on two staves. The top staff begins with the marking *si b.* above the staff. The bottom staff begins with the marking *W. J., Andte* to the left of the staff. A large brace groups the two staves. The notation includes a treble clef, a common time signature, and a key signature of one flat. A double bar line is present in the middle of the system.

Handwritten musical notation on two staves. The top staff contains a melodic line with eighth and sixteenth notes. The bottom staff contains a bass line. A double bar line is present in the middle of the system.

Handwritten musical notation on two staves. The top staff contains a melodic line with eighth and sixteenth notes. The bottom staff contains a bass line. A double bar line is present in the middle of the system.





*Handwritten signature or initials in the bottom right corner.*



Handwritten musical notation on two staves. The top staff begins with a treble clef and a 4/4 time signature. The music consists of several measures with notes and rests. The bottom staff begins with a bass clef and contains notes and rests corresponding to the top staff.

Handwritten musical notation on two staves. The top staff begins with a treble clef and a 4/4 time signature. The word "Mod" is written in the left margin. The music consists of several measures with notes and rests. The bottom staff begins with a bass clef and contains notes and rests.

Handwritten musical notation on two staves. The top staff begins with a treble clef and a 4/4 time signature. A large "2." is written in the middle of the staff. The music consists of several measures with notes and rests. The bottom staff begins with a bass clef and contains notes and rests.

Handwritten musical notation on two staves. The top staff begins with a treble clef and a 4/4 time signature. The music consists of several measures with notes and rests. The bottom staff begins with a bass clef and contains notes and rests.

Handwritten musical notation on two staves. The top staff begins with a treble clef and a 4/4 time signature. The music consists of several measures with notes and rests. The bottom staff begins with a bass clef and contains notes and rests.

Handwritten musical notation on two staves. The top staff begins with a treble clef and a 4/4 time signature. The music consists of several measures with notes and rests. The bottom staff begins with a bass clef and contains notes and rests.



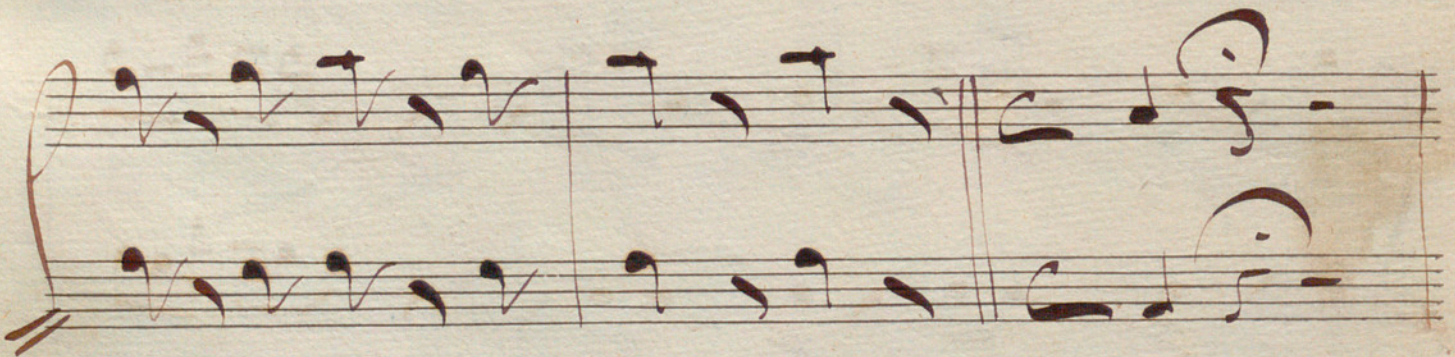
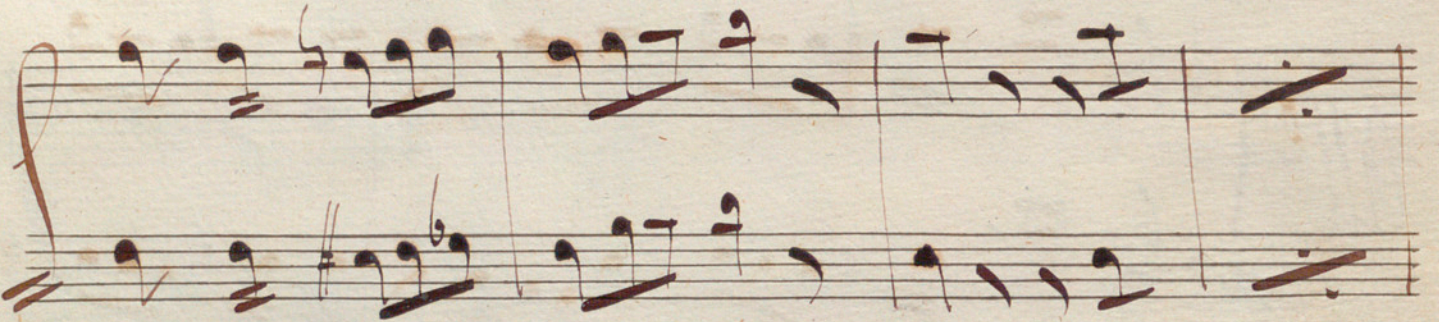
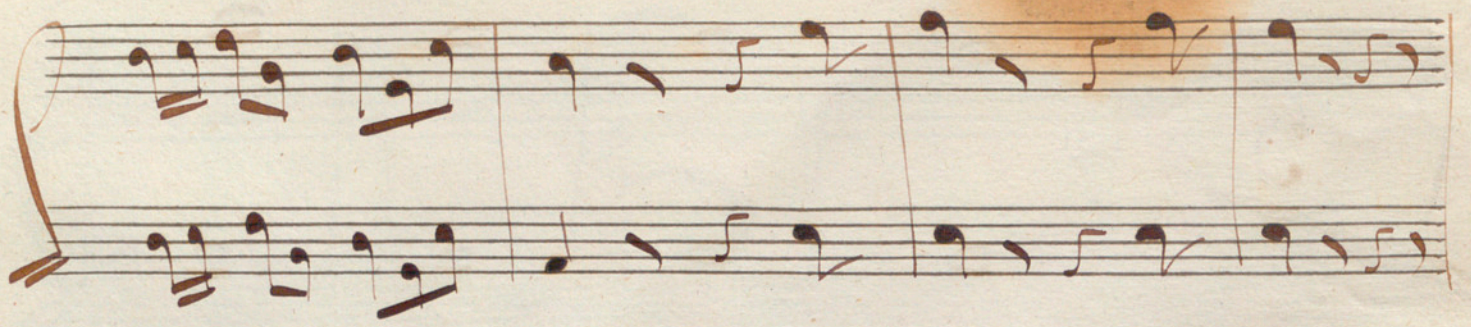
3. *p*

*All.*

*mf*

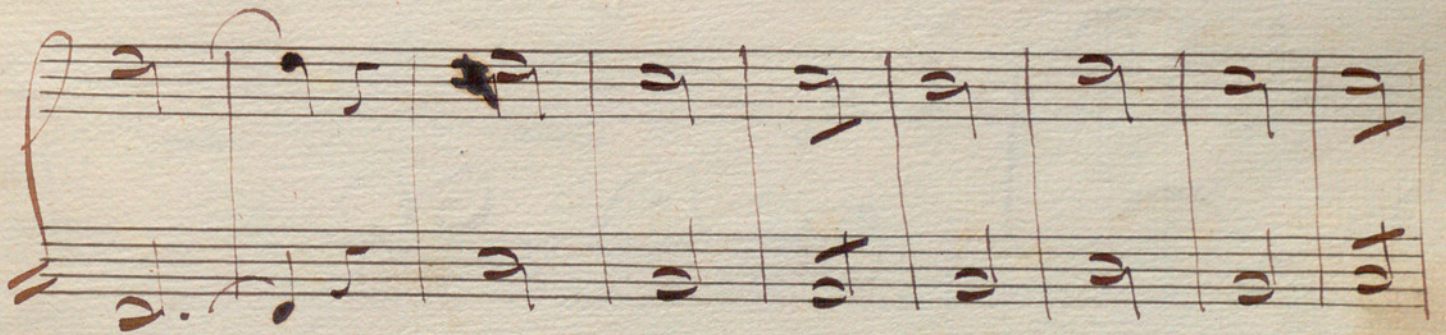
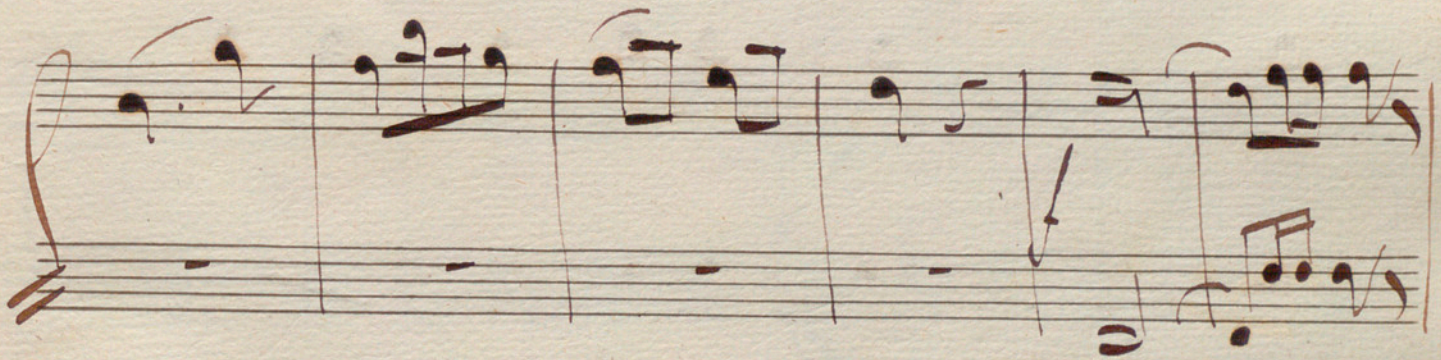
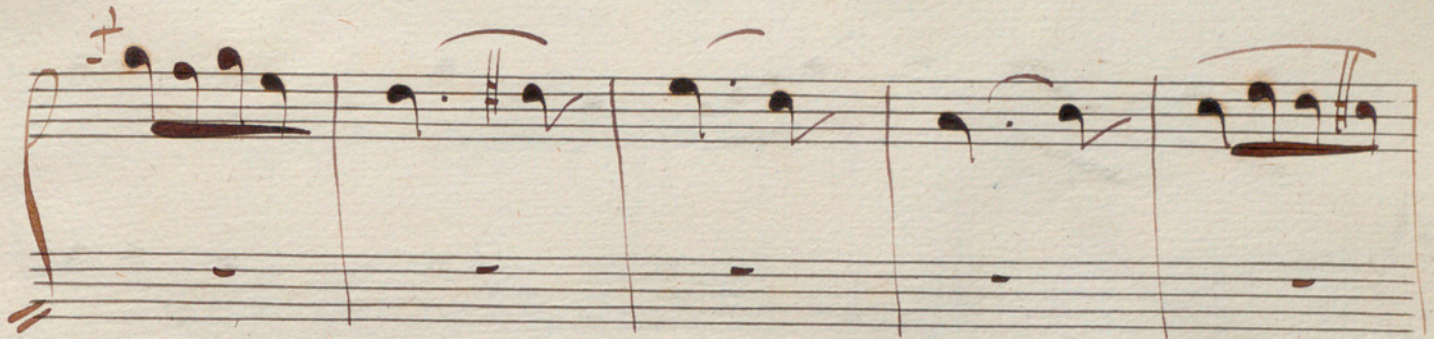
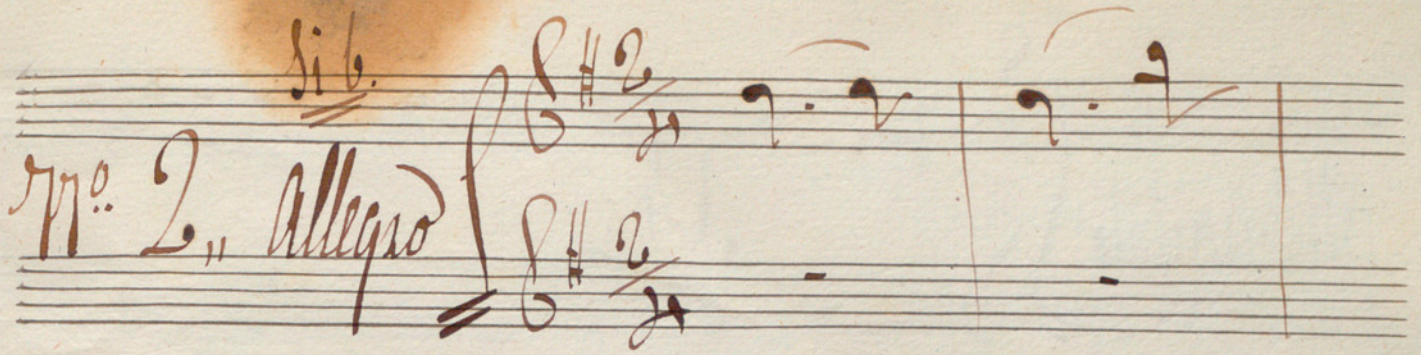
*p*







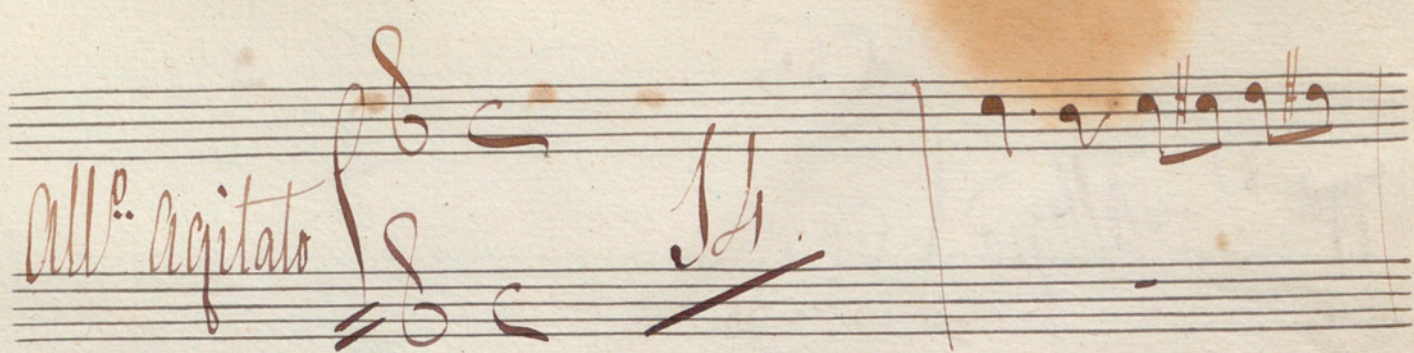
*Sib.*  
No. 2, Allegro



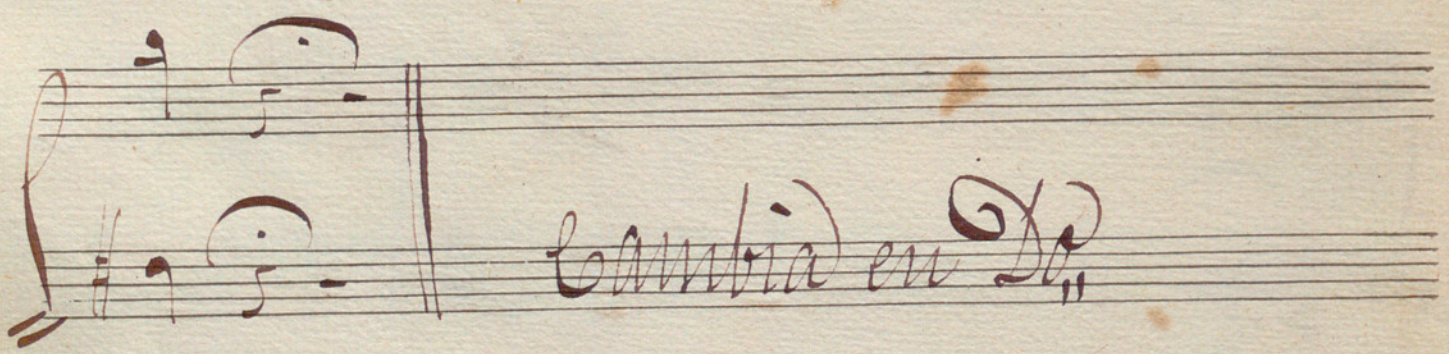
*andte*



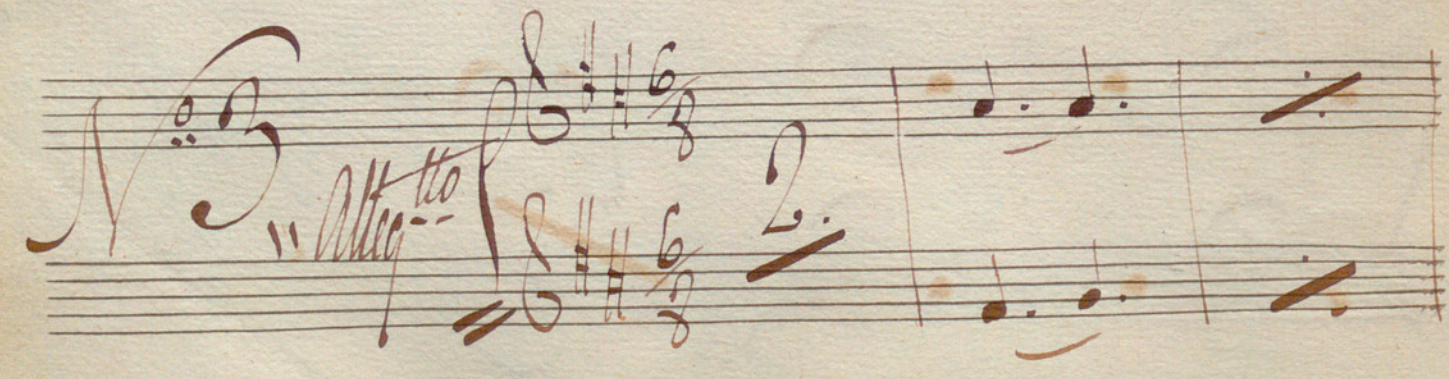
*All.<sup>o</sup> agitato* *Al.*



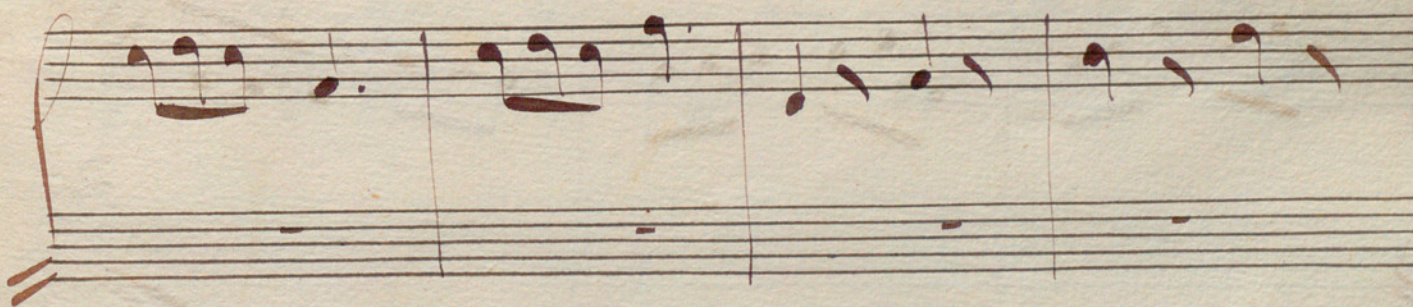
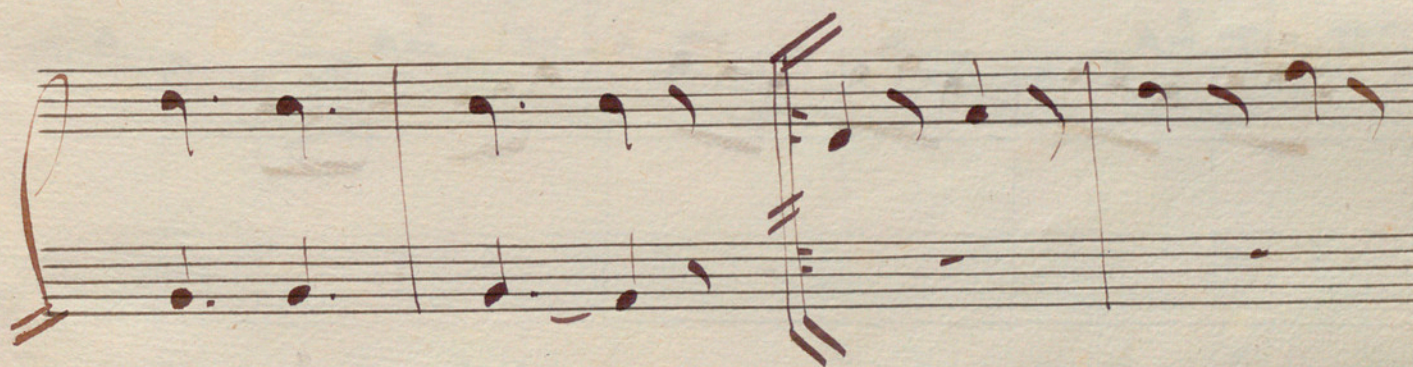
*Cambria en D<sub>2</sub>*



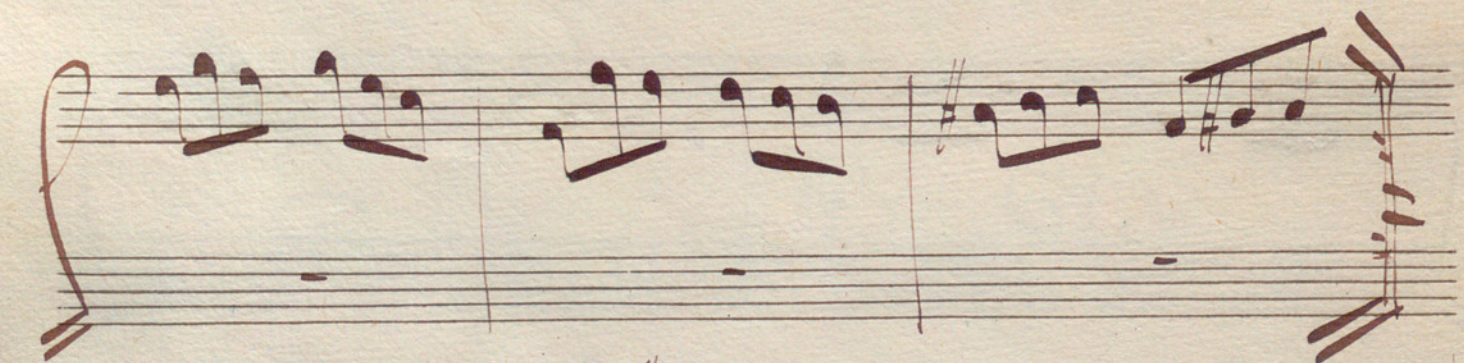
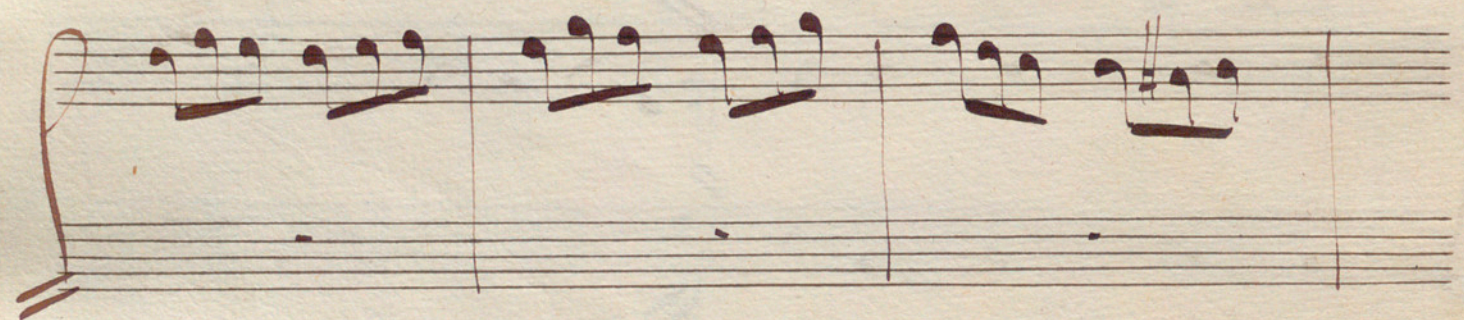
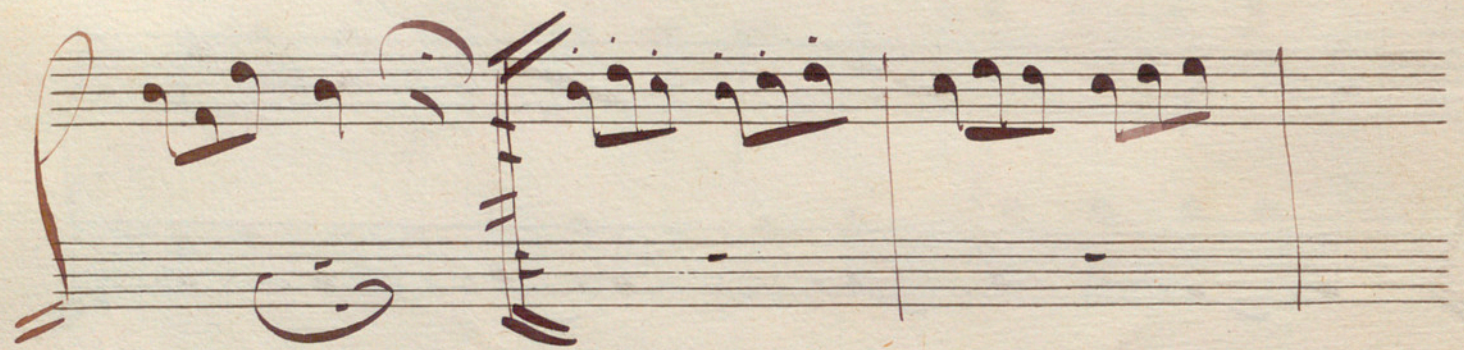
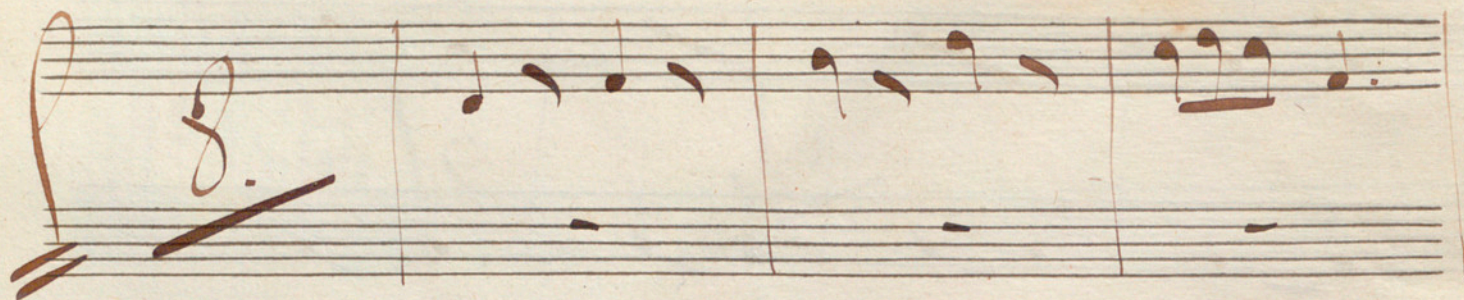
*Alleg<sup>ro</sup>*













Handwritten musical notation on a five-line staff. The music consists of several measures with notes and rests. A large '4.' is written at the end of the staff.

*Piu lento*

Handwritten musical notation on a five-line staff. The music is in 6/8 time, indicated by a '6.' and a '2' over a '2'. The notation includes notes and rests.

Handwritten musical notation on a five-line staff. The music is in 6/8 time, indicated by a '6' and a '2' over a '2'. The notation includes notes and rests.

Handwritten musical notation on a five-line staff. The music features a complex, fast-moving melodic line with many notes.

Handwritten musical notation on a five-line staff. The music features a complex, fast-moving melodic line with many notes.

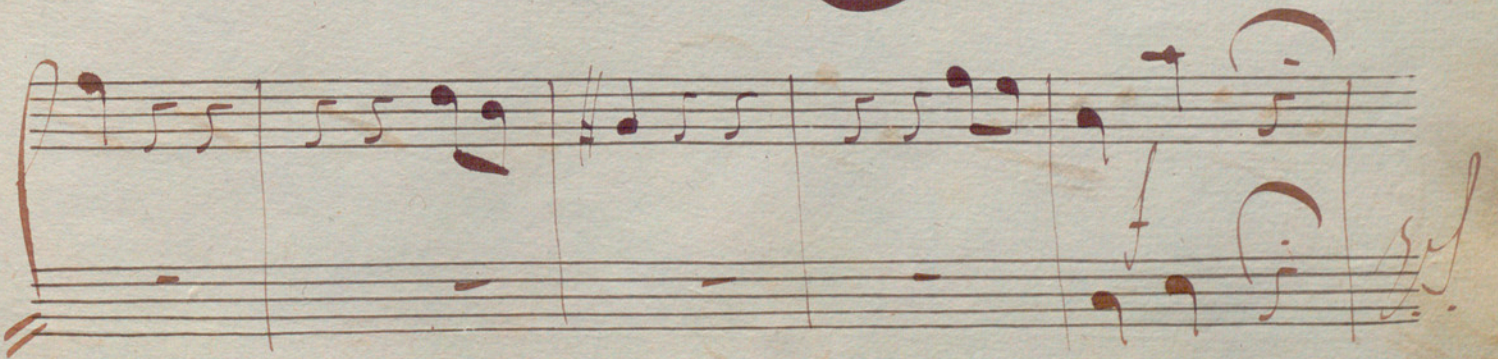
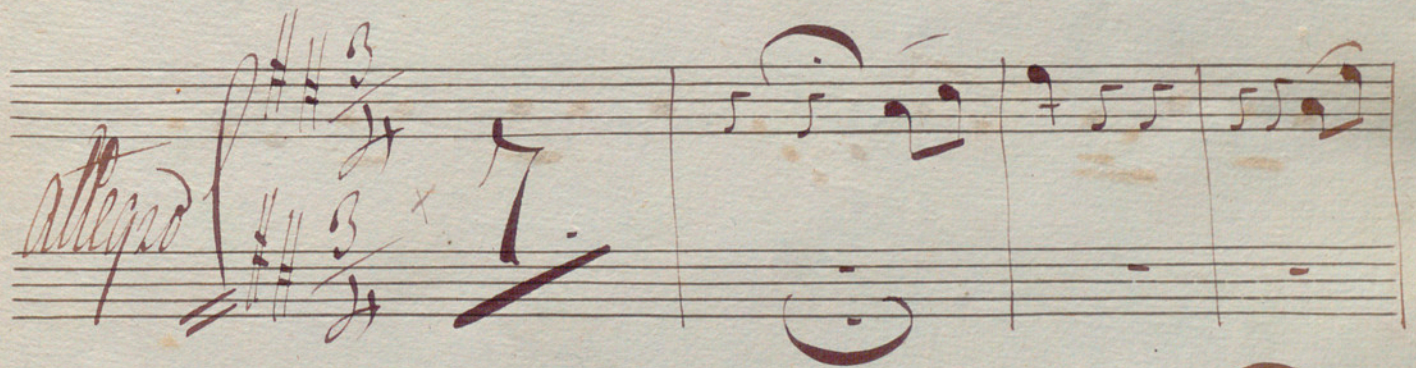
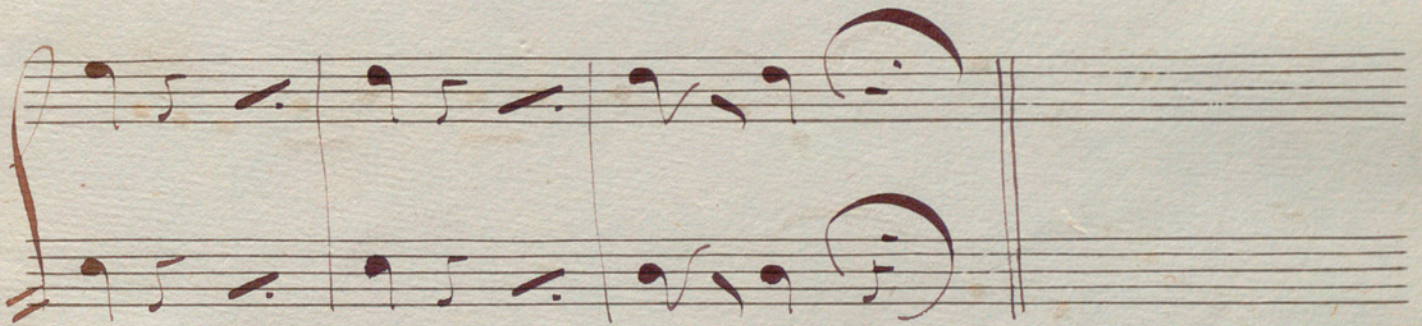
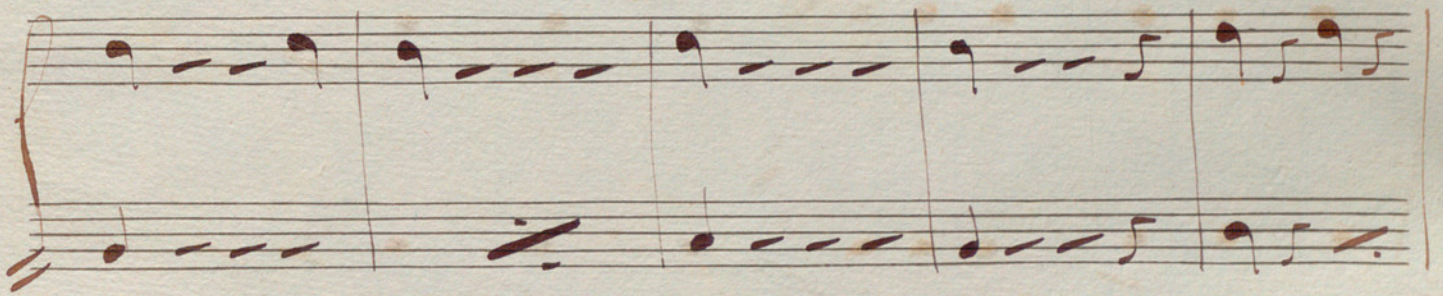
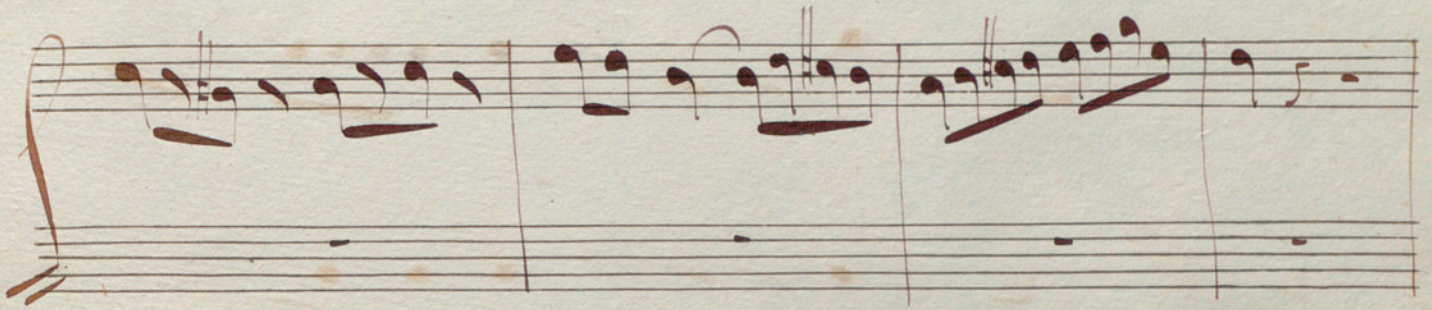
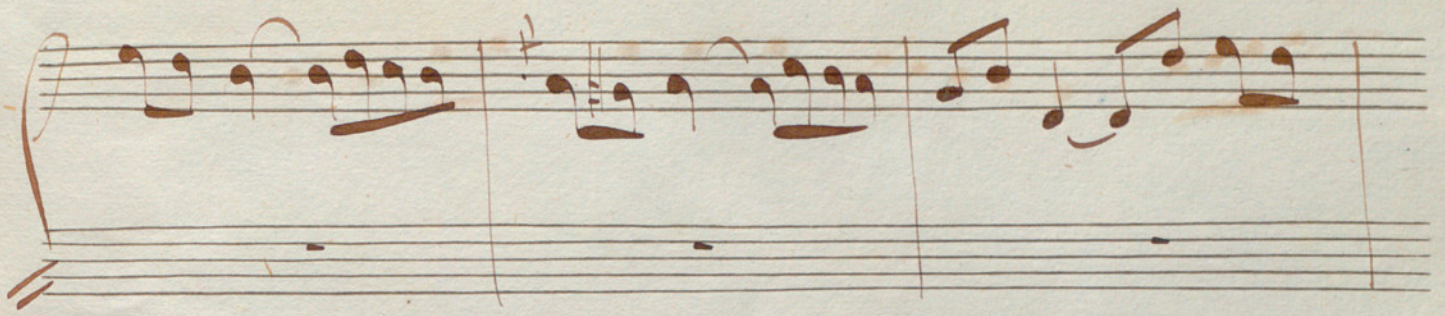
Handwritten musical notation on a five-line staff. The music is heavily scribbled over with dark ink, obscuring the original notation. A large '7.' is written at the end of the staff.



*And<sup>mo.</sup>*

*All. vivace*











*all.<sup>o</sup>*



Handwritten musical notation on two staves. The top staff begins with a treble clef and contains a sequence of notes: a quarter note, a half note, a quarter note, and a half note. The bottom staff begins with a bass clef and contains a sequence of notes: a quarter note, a half note, a quarter note, and a half note. Both staves are divided into measures by vertical bar lines.

Handwritten musical notation on two staves. The top staff begins with a treble clef and contains a sequence of notes: a quarter note, a half note, a quarter note, and a half note. The bottom staff begins with a bass clef and contains a sequence of notes: a quarter note, a half note, a quarter note, and a half note. Both staves are divided into measures by vertical bar lines.

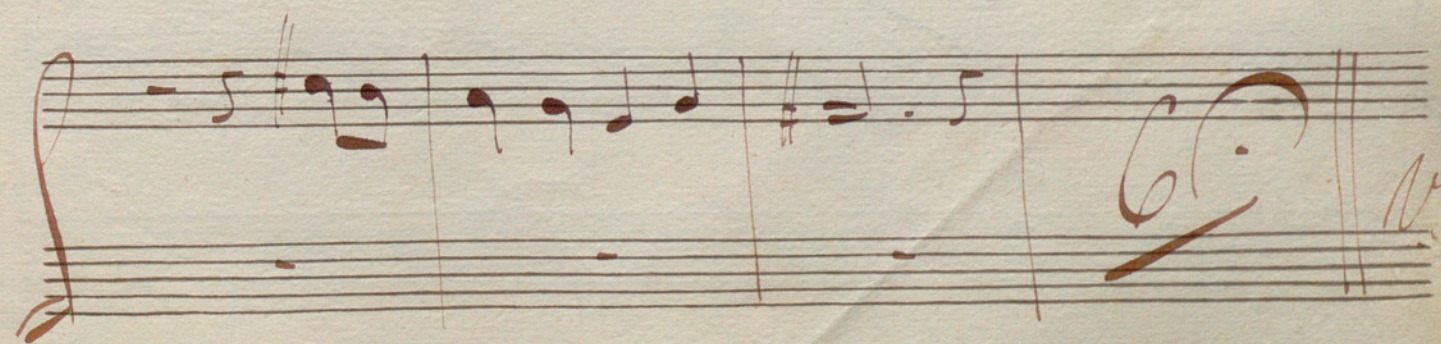
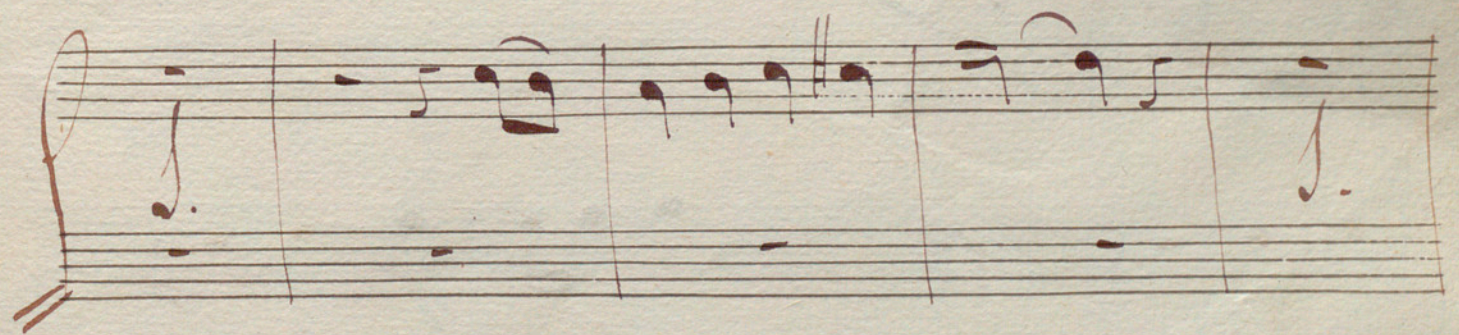
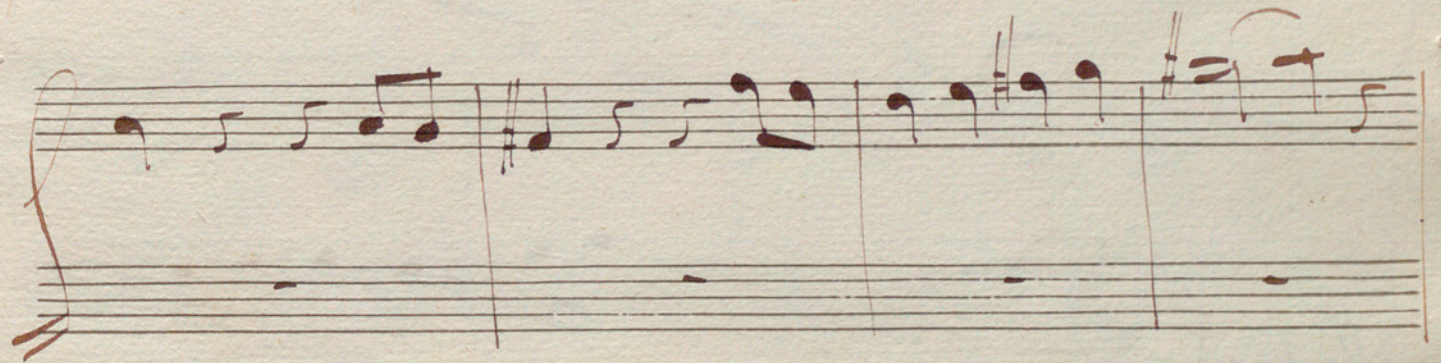
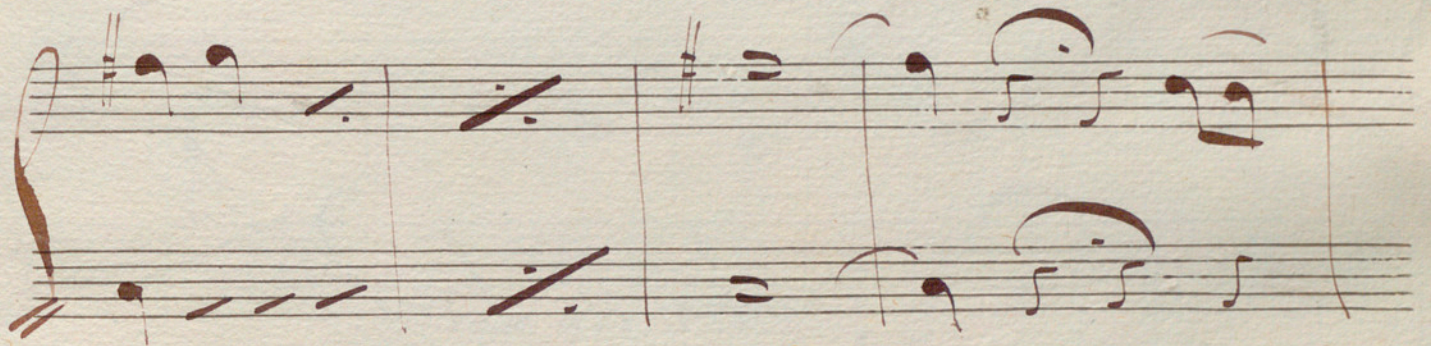
Handwritten musical notation on two staves. The top staff begins with a treble clef and contains a sequence of notes: a quarter note, a half note, a quarter note, and a half note. The bottom staff begins with a bass clef and contains a sequence of notes: a quarter note, a half note, a quarter note, and a half note. Both staves are divided into measures by vertical bar lines.

Handwritten musical notation on two staves. The top staff begins with a treble clef and contains a sequence of notes: a quarter note, a half note, a quarter note, and a half note. The bottom staff begins with a bass clef and contains a sequence of notes: a quarter note, a half note, a quarter note, and a half note. Both staves are divided into measures by vertical bar lines.

Handwritten musical notation on two staves. The top staff begins with a treble clef and contains a sequence of notes: a quarter note, a half note, a quarter note, and a half note. The bottom staff begins with a bass clef and contains a sequence of notes: a quarter note, a half note, a quarter note, and a half note. Both staves are divided into measures by vertical bar lines.

Handwritten musical notation on two staves. The top staff begins with a treble clef and contains a sequence of notes: a quarter note, a half note, a quarter note, and a half note. The bottom staff begins with a bass clef and contains a sequence of notes: a quarter note, a half note, a quarter note, and a half note. Both staves are divided into measures by vertical bar lines. The word "all" is written in the left margin, and the word "vivo" is written in the right margin.







*en Do.*  
N<sup>o</sup> 6. *All.<sup>o</sup>*  
8 # # 6 / 8 9.

*Mod<sup>o</sup>*  
3.



Handwritten musical notation on a grand staff, first system. The music is written in brown ink on aged paper. It features a treble clef on the upper staff and a bass clef on the lower staff. The notation includes various note values, rests, and bar lines. A sharp sign is visible in the first measure of the upper staff.

Handwritten musical notation on a grand staff, second system. The notation continues from the first system, showing melodic lines in both staves with various rhythmic patterns and rests.

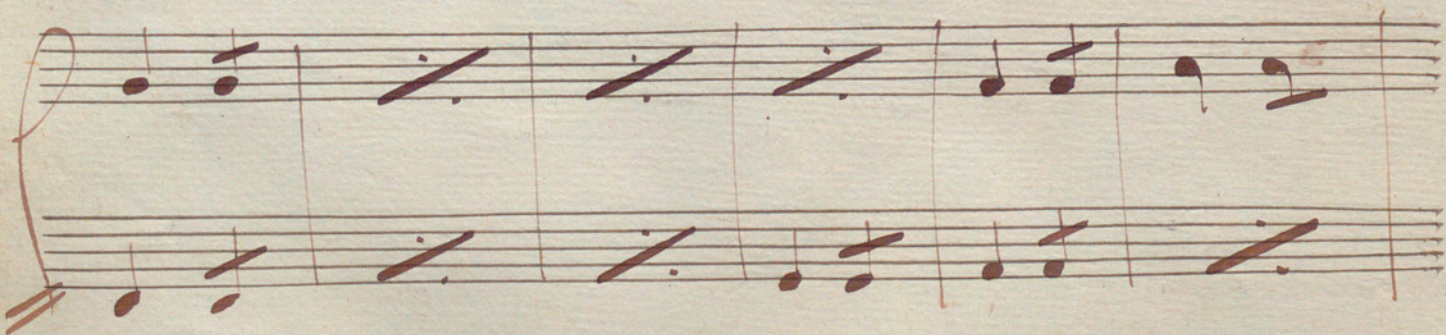
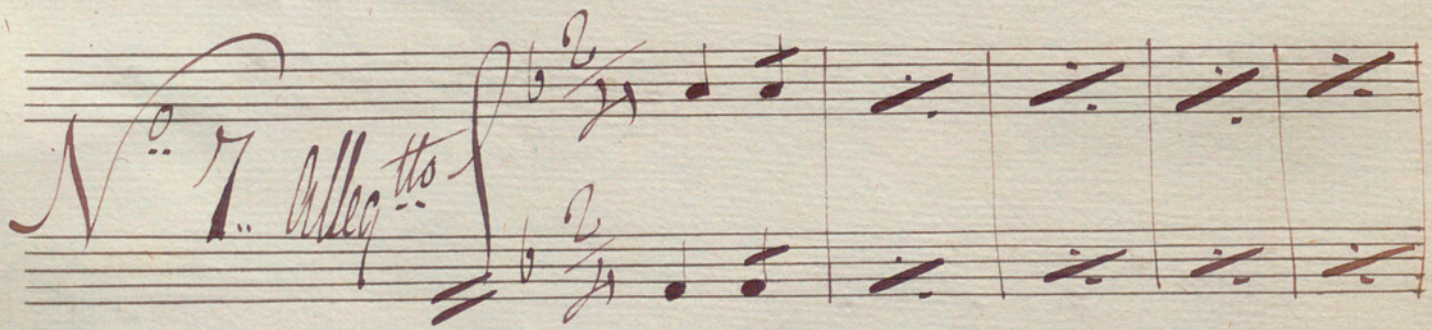
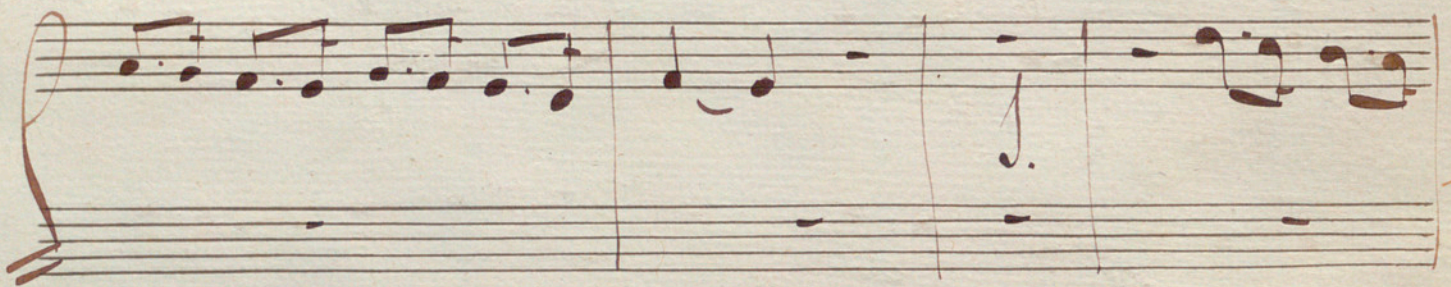
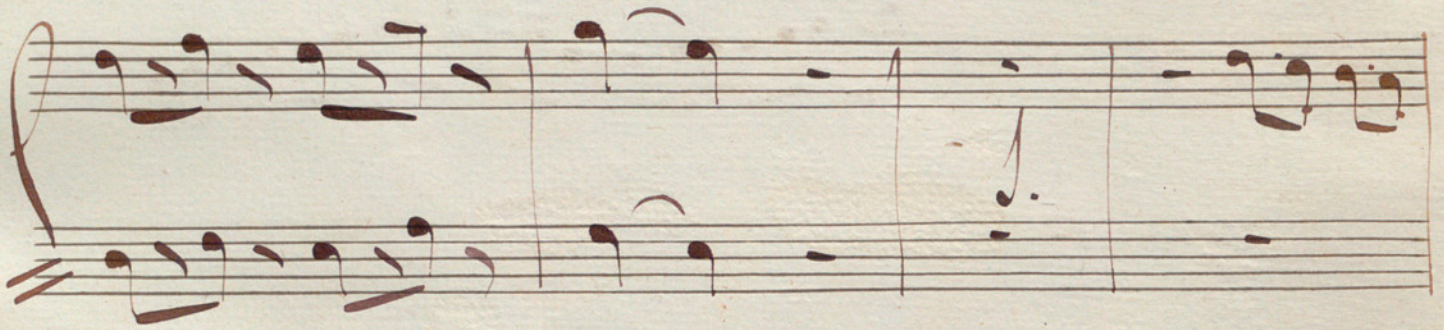
Handwritten musical notation on a grand staff, third system. This system includes the handwritten annotation "1a. vez." in the left margin and "2a" in the middle of the staff. The notation shows a continuation of the musical piece with various note values and rests.

Handwritten musical notation on a grand staff, fourth system. The notation continues with melodic and harmonic development in both staves.

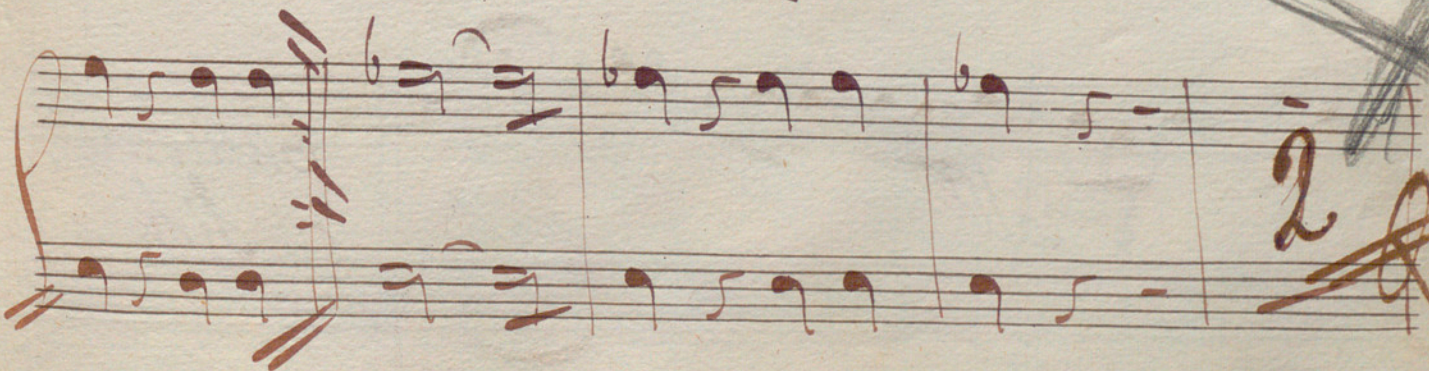
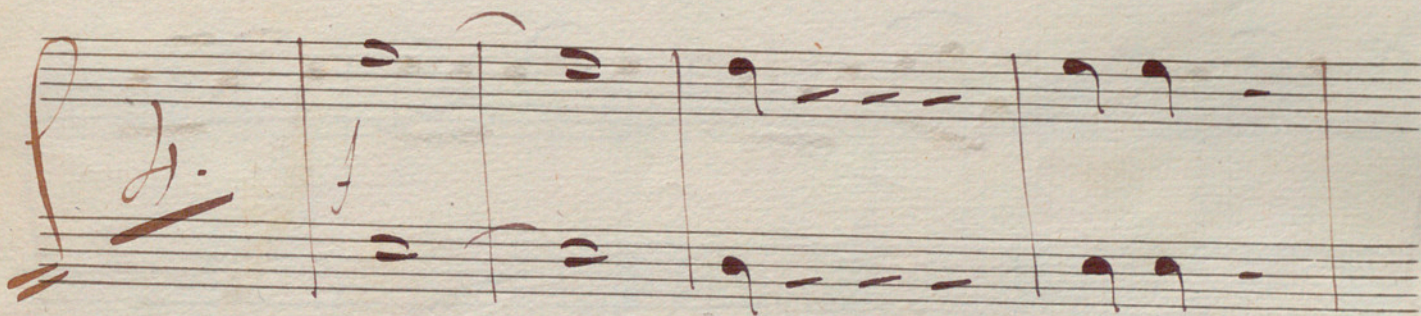
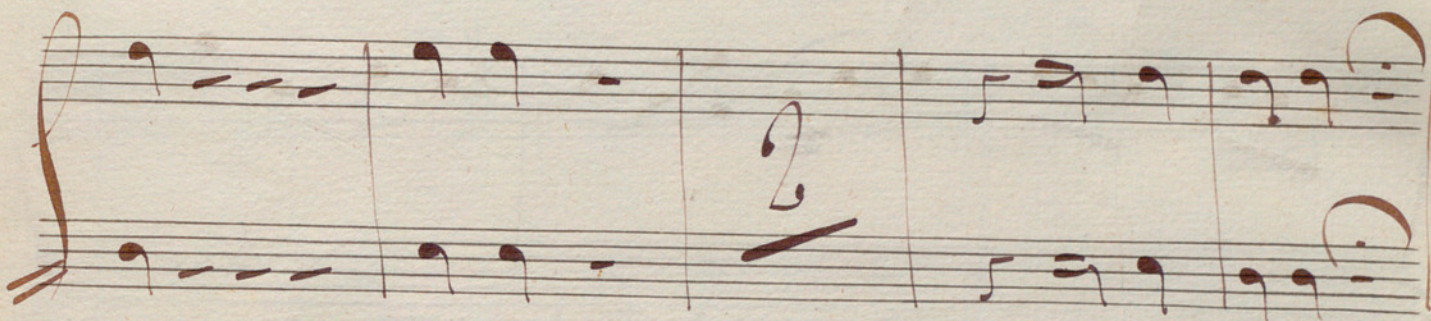
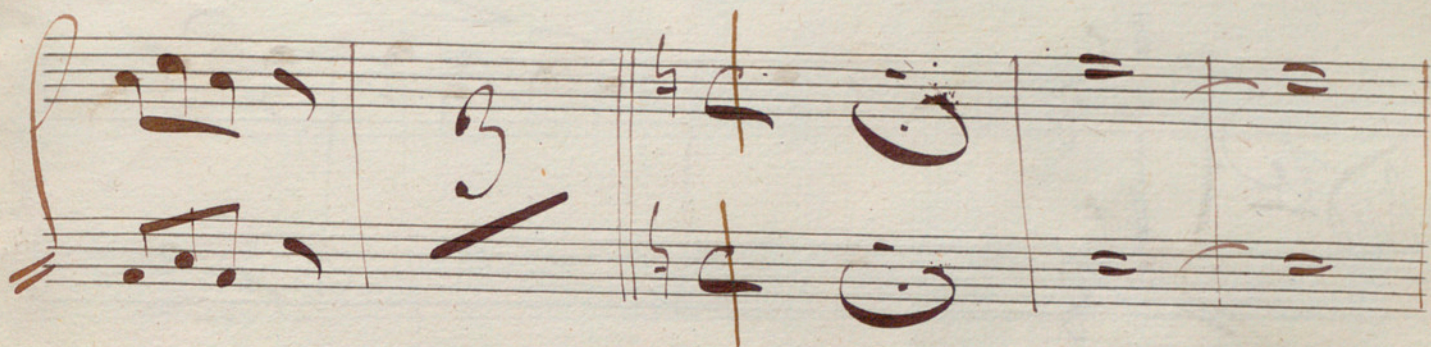
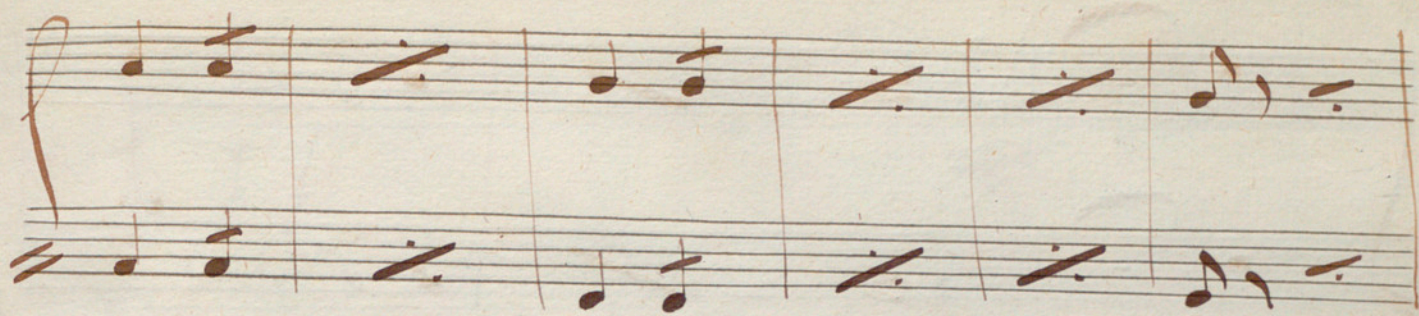
Handwritten musical notation on a grand staff, fifth system. The notation includes a dynamic marking "p." (piano) in the right margin. The music shows a continuation of the melodic and harmonic themes.

Handwritten musical notation on a grand staff, sixth system. The notation concludes the piece on this page, with a final dynamic marking "p." in the right margin. The music ends with a final cadence in both staves.

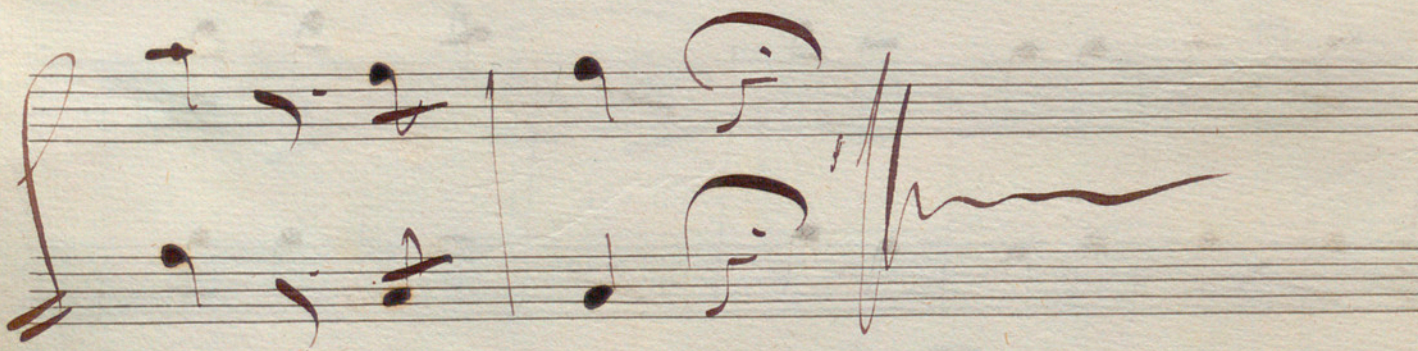
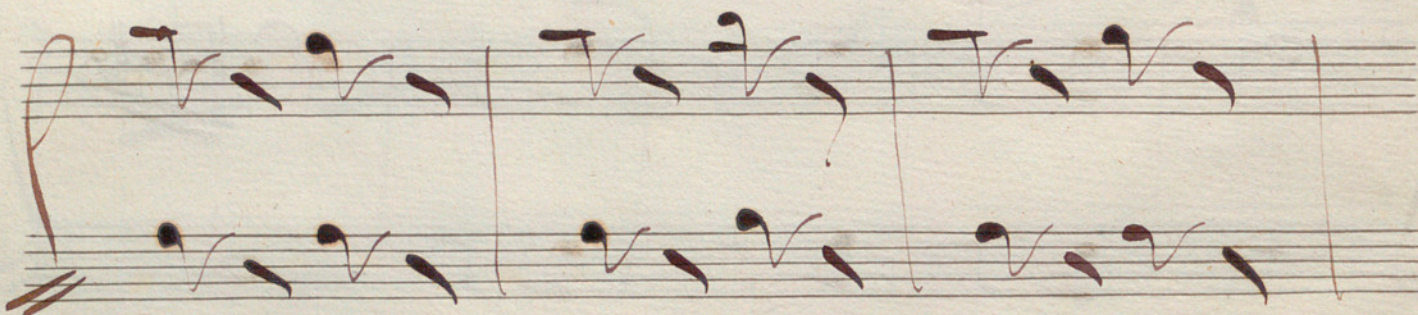












*Samba en D<sub>7</sub>*



*No. 8*  
*Lento en Do*

The first system of the manuscript features two staves. The top staff begins with a treble clef, a common time signature (C), and a key signature of one flat (B-flat). The notation includes a large, prominent blue 'X' mark drawn over the first few notes. The bottom staff starts with a bass clef and a common time signature (C). The word "Lento" is written in a cursive hand above the first few notes, and "en Do" is written below the staff. The notation continues with several measures of music.

The second system consists of two staves. The top staff has a treble clef and contains several measures of music with eighth and sixteenth notes. The bottom staff has a bass clef and contains corresponding notes, including some rests.

The third system consists of two staves. The top staff has a treble clef and contains several measures of music, including a measure with a fermata. The bottom staff has a bass clef and contains notes and rests, with a large, decorative flourish in the second measure.

The fourth system consists of two staves. The top staff has a treble clef and contains several measures of music with various note values. The bottom staff has a bass clef and contains notes and rests, including a measure with a fermata.

The fifth system consists of two staves. The top staff has a treble clef and contains several measures of music. The bottom staff has a bass clef and contains notes and rests, including a measure with a fermata.

The sixth system consists of two staves. The top staff has a treble clef and contains several measures of music, including a measure with a fermata. The bottom staff has a bass clef and contains notes and rests, including a measure with a fermata.



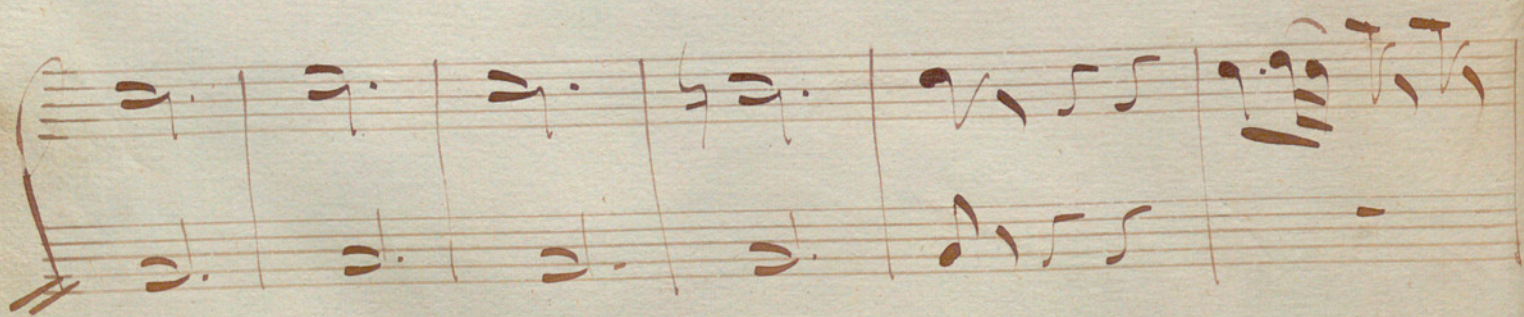
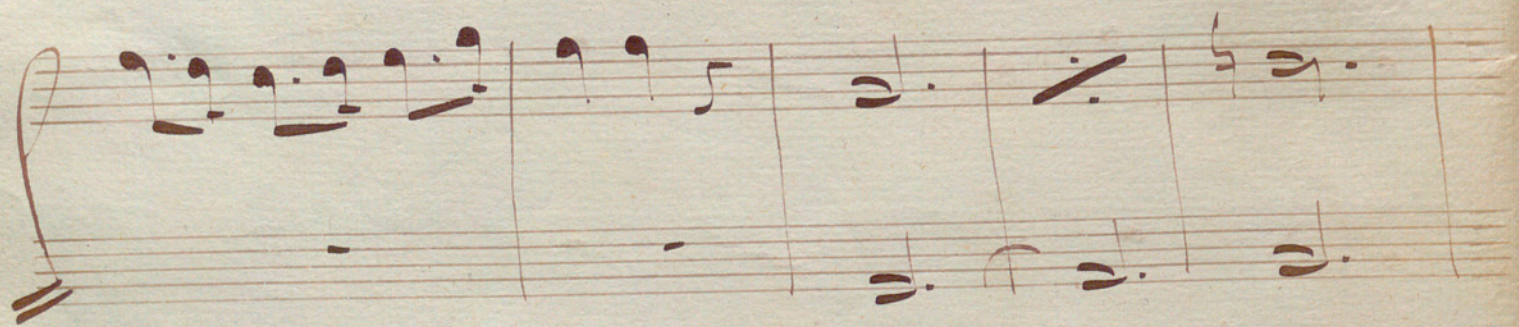
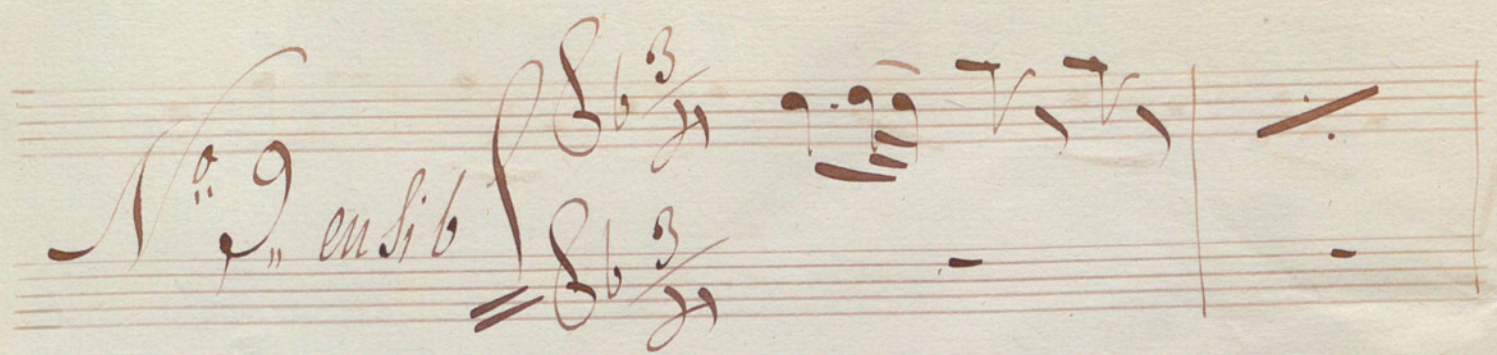
*lento.*



*V. J. P.*  
Cambia en Si b.



No. 9 en Sib





Handwritten musical notation on a five-line staff, featuring various note values and rests.

Handwritten musical notation on a five-line staff, including a complex rhythmic figure with many notes.

Handwritten musical notation on a five-line staff, ending with a double bar line and a fermata-like symbol.

Handwritten musical notation on a five-line staff, showing a sequence of notes and rests.

Handwritten musical notation on a five-line staff, featuring a large, decorative flourish that spans across the staff.

Empty musical staves at the bottom of the page.



Le Duce

A handwritten musical score on aged paper, titled "Le Duce". The score consists of approximately 12 staves of music, arranged in pairs. The notation is in brown ink and includes various musical symbols such as notes, rests, and clefs. A large, light-colored diagonal cross is drawn across the entire page, from the top-left to the bottom-right, crossing over all the musical staves. In the upper left corner, there is a small, stylized signature or logo. The paper shows signs of age, including some staining and a slightly uneven texture.



Handwritten musical notation on a five-line staff, featuring a treble clef and a series of eighth and sixteenth notes.

Handwritten musical notation on a five-line staff, featuring a treble clef, a key signature of one flat, and a time signature of 2/4. The notation includes various note values and rests. There is a large blue scribble over the first few measures.

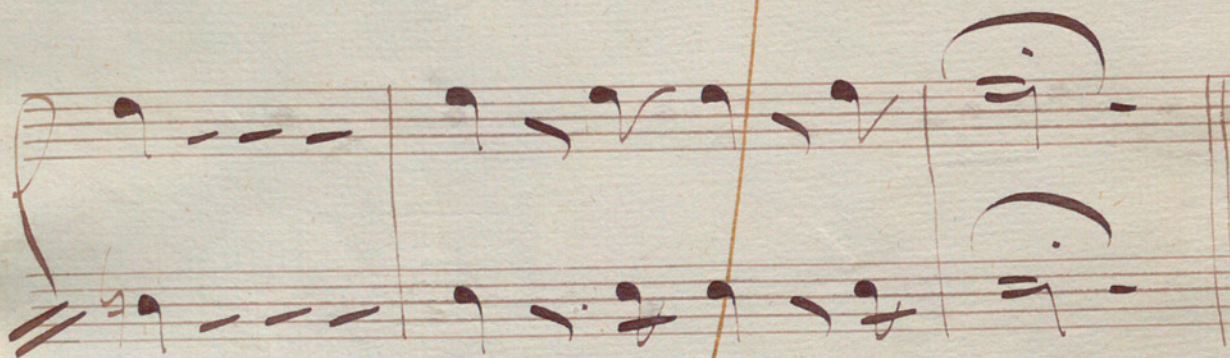
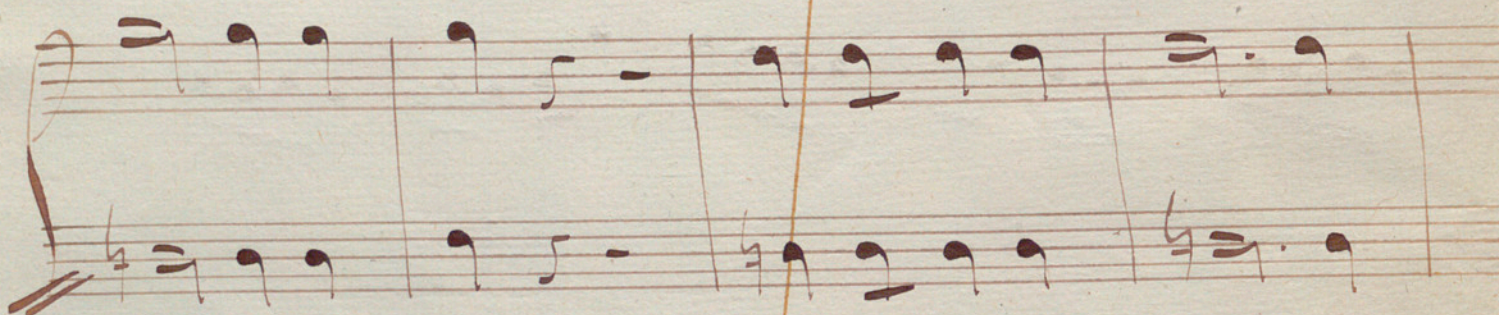
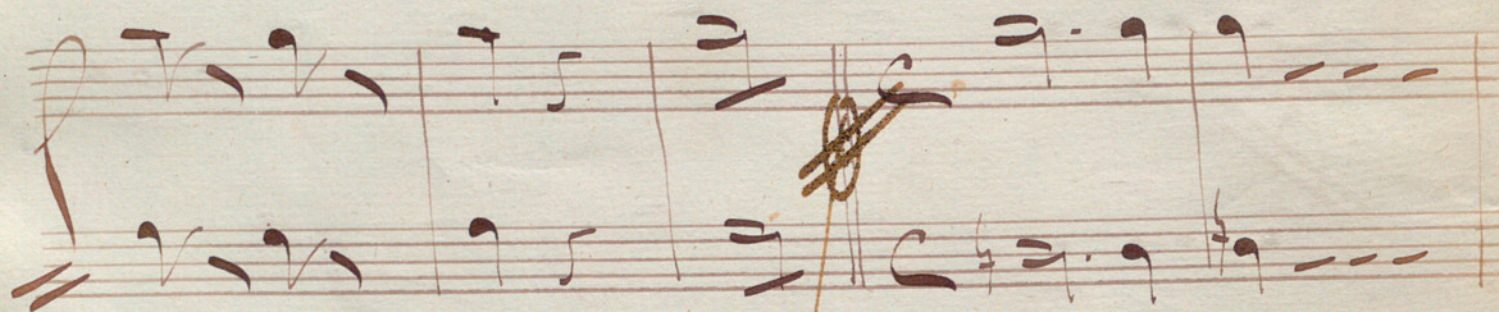
Handwritten musical notation on a five-line staff, featuring a treble clef and a series of eighth and sixteenth notes.

Handwritten musical notation on a five-line staff, featuring a treble clef and a series of eighth and sixteenth notes.

Handwritten musical notation on a five-line staff, featuring a treble clef and a series of eighth and sixteenth notes.

Handwritten musical notation on a five-line staff, featuring a treble clef and a series of eighth and sixteenth notes. The word "sol." is written above the third measure. The piece concludes with a double bar line and a final flourish.

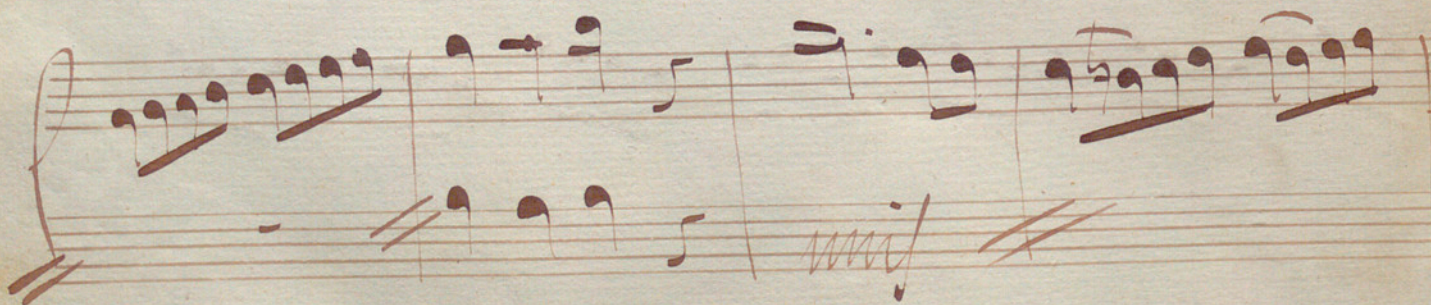




*en si b*

*N<sup>o</sup> 50<sup>o</sup> all'vivace*

*mit*





Handwritten musical notation on a five-line staff. The first measure contains a series of eighth notes. The key signature is one sharp (F#). The notation includes quarter and half notes in subsequent measures.

Handwritten musical notation on a five-line staff. The notation includes quarter and half notes with slurs. The key signature is one sharp (F#).

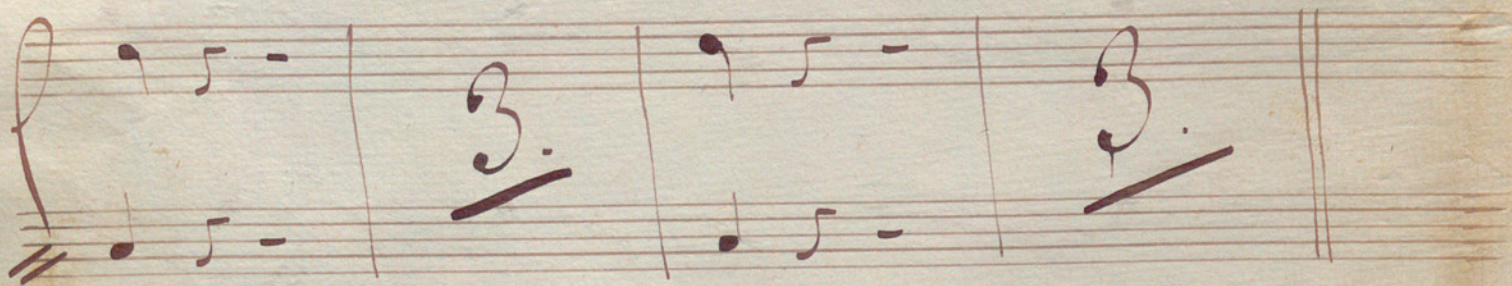
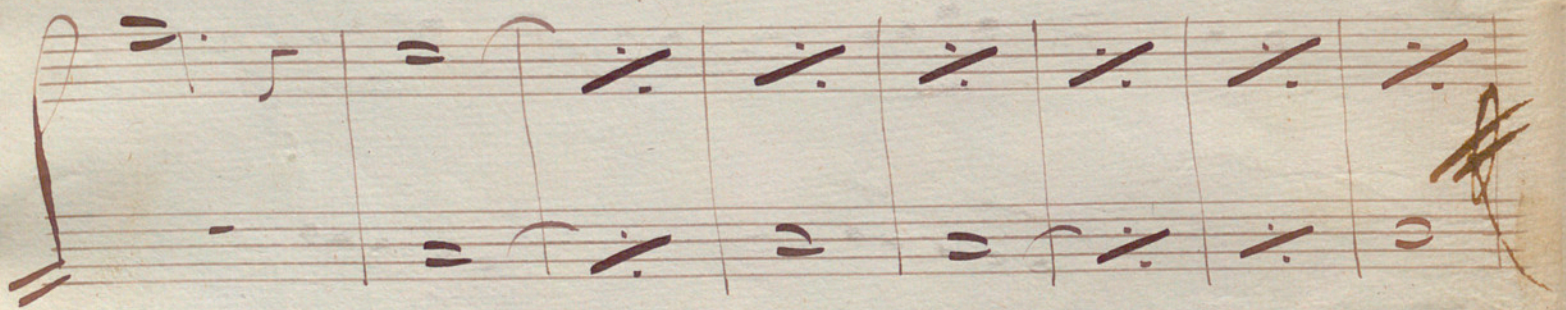
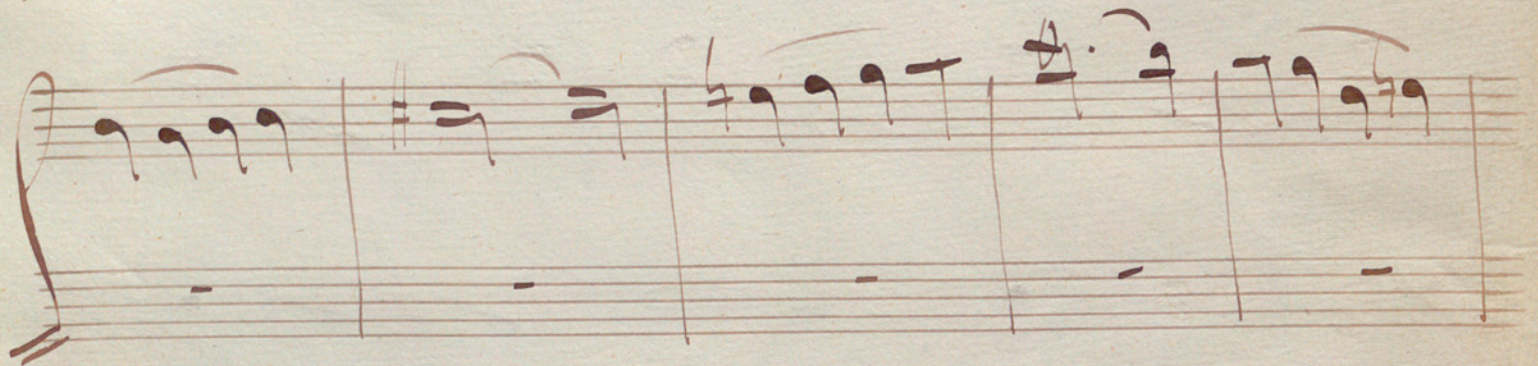
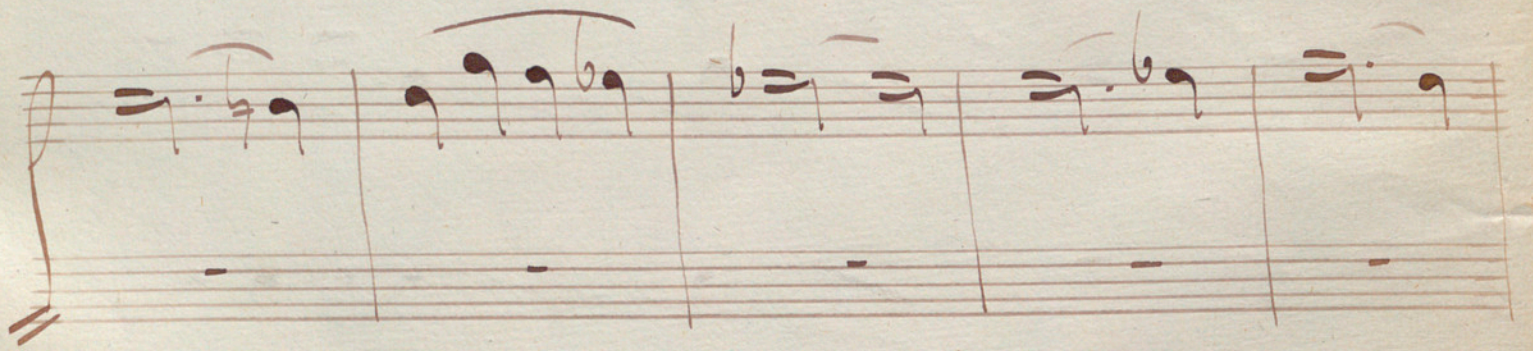
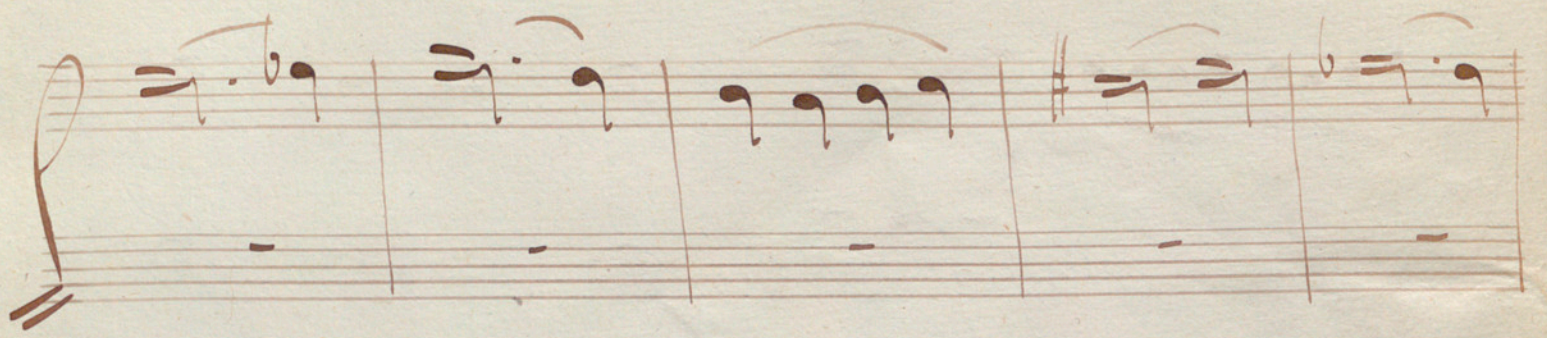
Handwritten musical notation on a five-line staff. The notation includes quarter and half notes with slurs. The key signature is one sharp (F#).

Handwritten musical notation on a five-line staff. The notation includes quarter and half notes with slurs. The key signature is one sharp (F#).

Handwritten musical notation on a five-line staff. The notation includes quarter and half notes with slurs. The key signature is one sharp (F#).

Handwritten musical notation on a five-line staff. The notation includes quarter and half notes with slurs, ending with a double bar line and a fermata. The key signature is one sharp (F#).







Handwritten musical notation on a five-line staff. The piece is titled "No. 1" and is in 3/4 time. The key signature has one sharp (F#). The notation includes a treble clef, a key signature of one sharp, and a 3/4 time signature. The music consists of a melody in the upper voice and a bass line in the lower voice, both using quarter and eighth notes.

Handwritten musical notation on a five-line staff. The piece is titled "No. 2" and is in 3/4 time. The key signature has one sharp (F#). The notation includes a treble clef, a key signature of one sharp, and a 3/4 time signature. The music consists of a melody in the upper voice and a bass line in the lower voice, both using quarter and eighth notes. The word "mit" is written below the staff.

Handwritten musical notation on a five-line staff. The piece is titled "No. 3" and is in 3/4 time. The key signature has one sharp (F#). The notation includes a treble clef, a key signature of one sharp, and a 3/4 time signature. The music consists of a melody in the upper voice and a bass line in the lower voice, both using quarter and eighth notes.

Handwritten musical notation on a five-line staff. The piece is titled "No. 4" and is in 3/4 time. The key signature has one sharp (F#). The notation includes a treble clef, a key signature of one sharp, and a 3/4 time signature. The music consists of a melody in the upper voice and a bass line in the lower voice, both using quarter and eighth notes.

Handwritten musical notation on a five-line staff. The piece is titled "No. 5" and is in 3/4 time. The key signature has one sharp (F#). The notation includes a treble clef, a key signature of one sharp, and a 3/4 time signature. The music consists of a melody in the upper voice and a bass line in the lower voice, both using quarter and eighth notes.

Handwritten musical notation on a five-line staff. The piece is titled "No. 6" and is in 2/4 time. The key signature has one sharp (F#). The notation includes a treble clef, a key signature of one sharp, and a 2/4 time signature. The music consists of a melody in the upper voice and a bass line in the lower voice, both using quarter and eighth notes.

Handwritten musical notation on a five-line staff. The piece is titled "No. 7" and is in 2/4 time. The key signature has one sharp (F#). The notation includes a treble clef, a key signature of one sharp, and a 2/4 time signature. The music consists of a melody in the upper voice and a bass line in the lower voice, both using quarter and eighth notes. The piece ends with a double bar line and a large flourish.



Handwritten musical notation on a five-line staff. The music features a treble clef, a key signature of one sharp (F#), and a common time signature (C). The notation includes eighth and sixteenth notes, some beamed together, and rests. A double bar line is present at the end of the staff. The word "Vivif" is written in cursive below the staff.

Handwritten musical notation on a five-line staff, continuing the piece. It features a treble clef, a key signature of one sharp, and a common time signature. The notation includes eighth and sixteenth notes, some beamed together, and rests. A double bar line is present at the end of the staff.

Handwritten musical notation on a five-line staff. The music features a treble clef, a key signature of one sharp, and a common time signature. The notation includes eighth and sixteenth notes, some beamed together, and rests. A double bar line is present at the end of the staff.

Handwritten musical notation on a five-line staff. The music features a treble clef, a key signature of one sharp, and a common time signature. The notation includes eighth and sixteenth notes, some beamed together, and rests. A double bar line is present at the end of the staff. The word "Solo" is written above the staff, and there are some scribbles and a circled 'D' on the left side.

Handwritten musical notation on a five-line staff. The music features a treble clef, a key signature of one sharp, and a common time signature. The notation includes eighth and sixteenth notes, some beamed together, and rests. A double bar line is present at the end of the staff.

Handwritten musical notation on a five-line staff. The music features a treble clef, a key signature of one sharp, and a common time signature. The notation includes eighth and sixteenth notes, some beamed together, and rests. A double bar line is present at the end of the staff.



N<sup>o</sup> 52, *all.<sup>o</sup> agitato*  $\frac{4}{8}$   $\frac{6}{8}$

*2.* *mf*

*mf*

*And<sup>te</sup>*  $\frac{3}{4}$  *al Papel Suave*

*2.*

*3.*



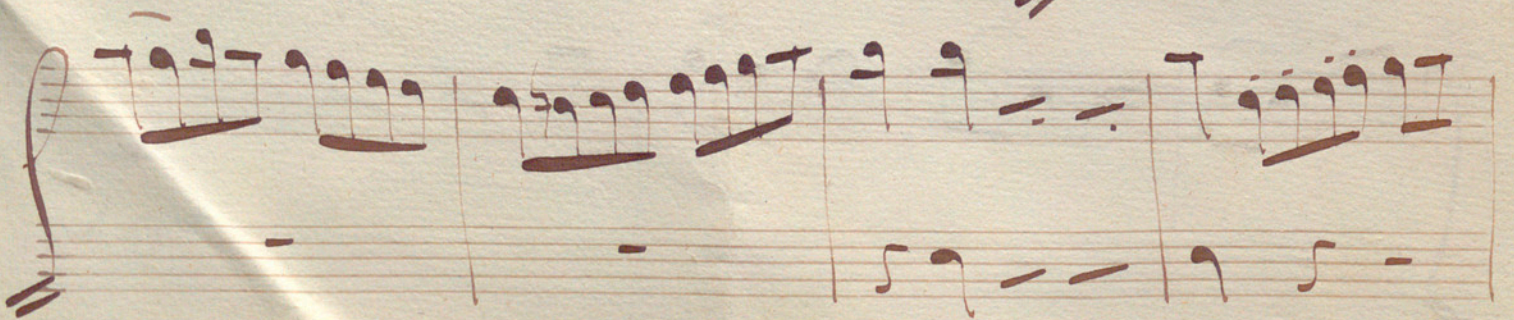
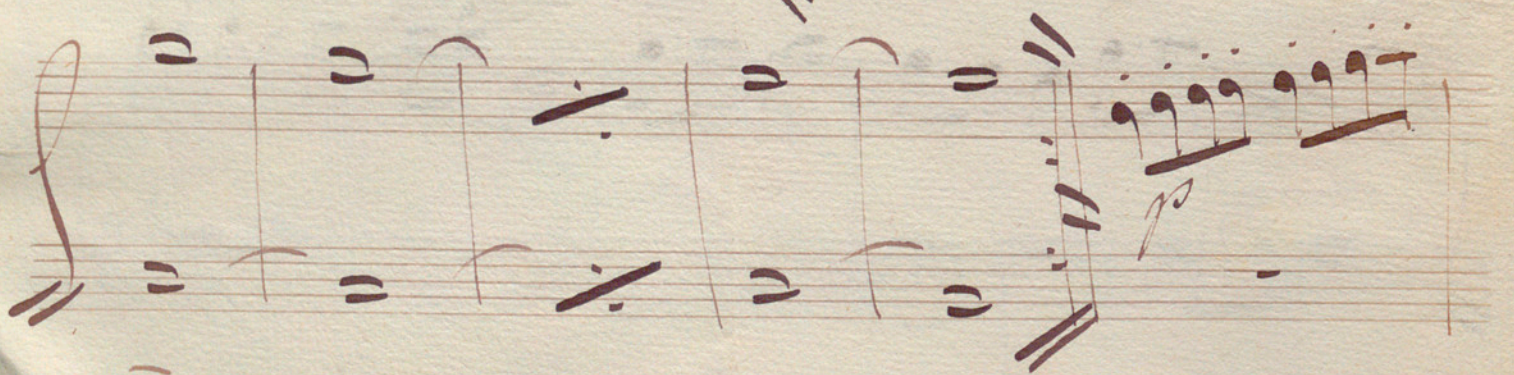
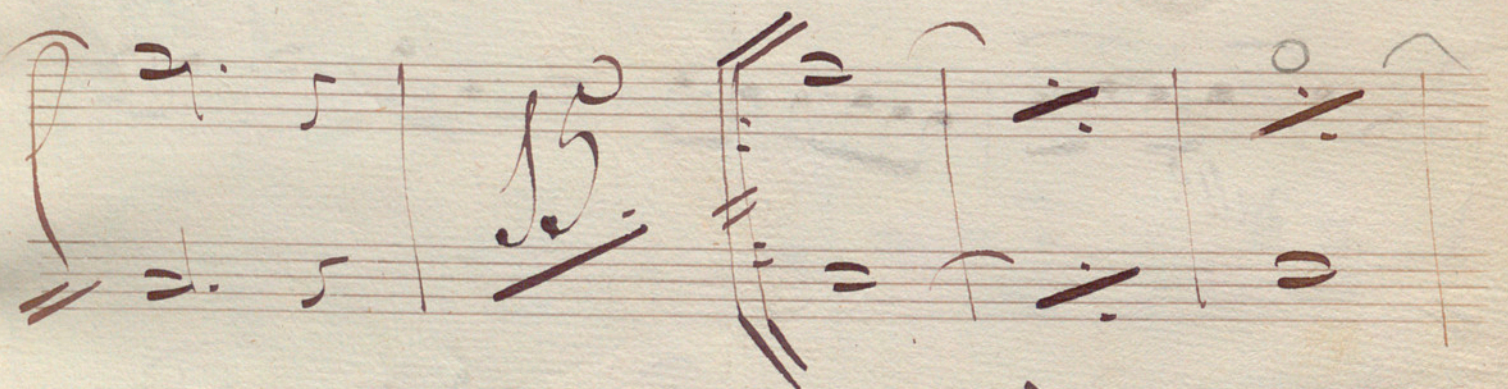
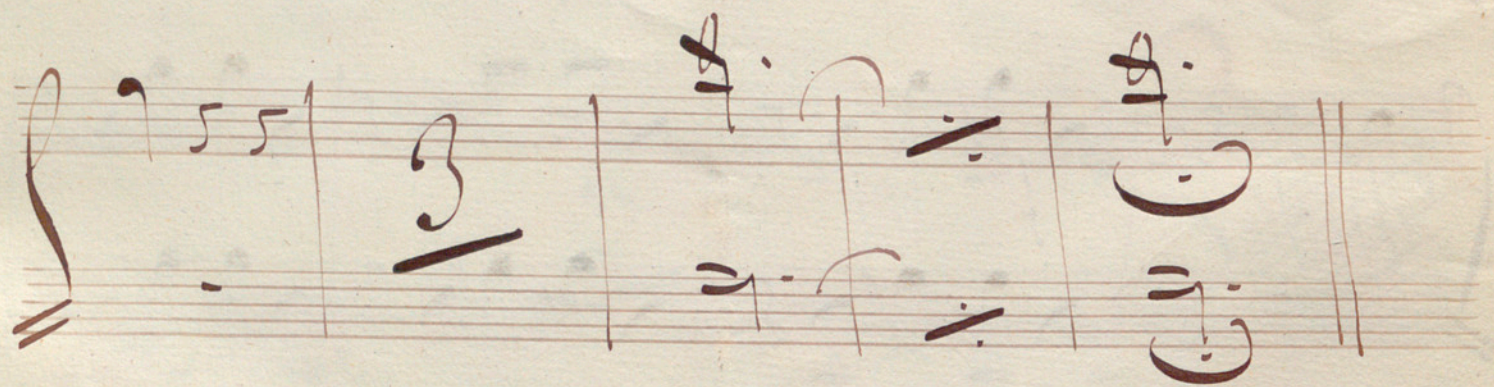
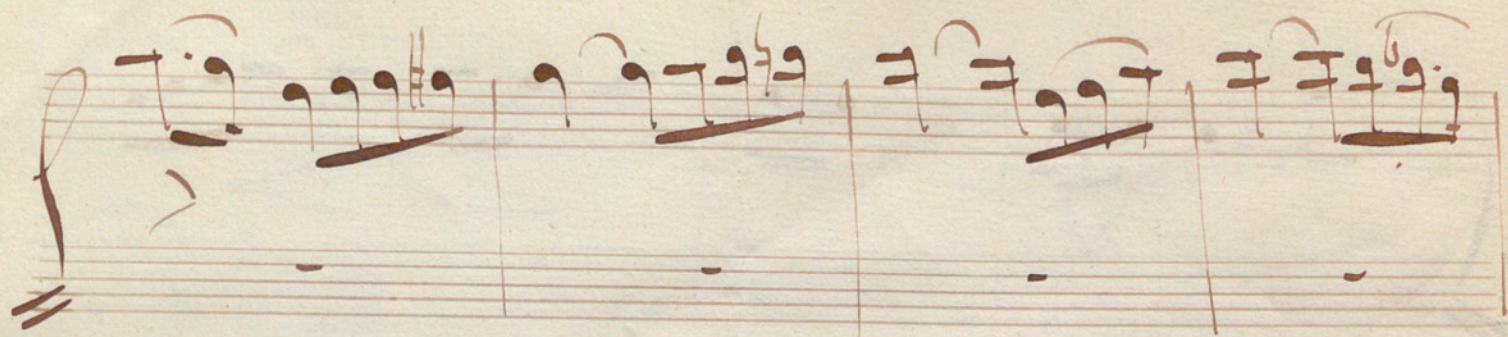
*Pas de deux, en La*

*Andte*













*Handwritten signature or initials*



*p*

*Allég<sup>ro</sup> en La.*



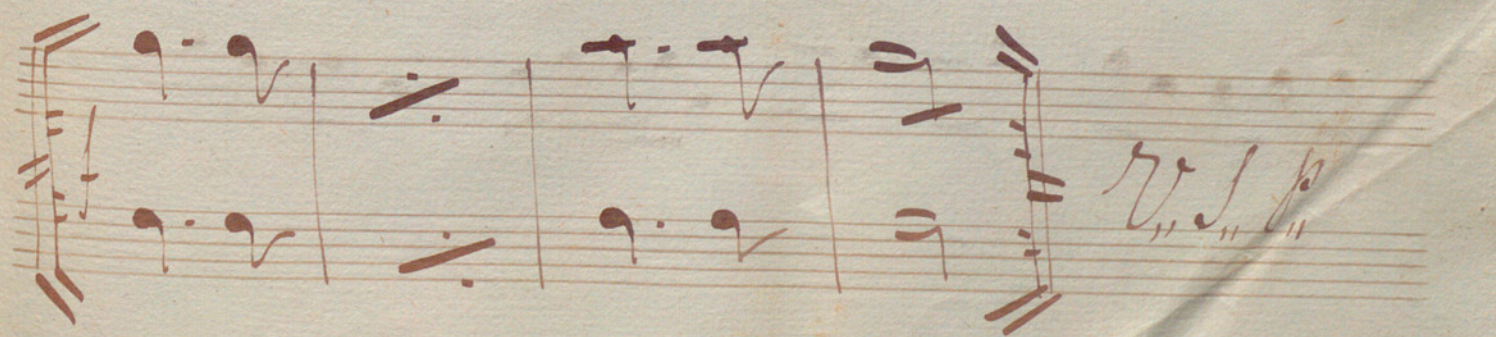
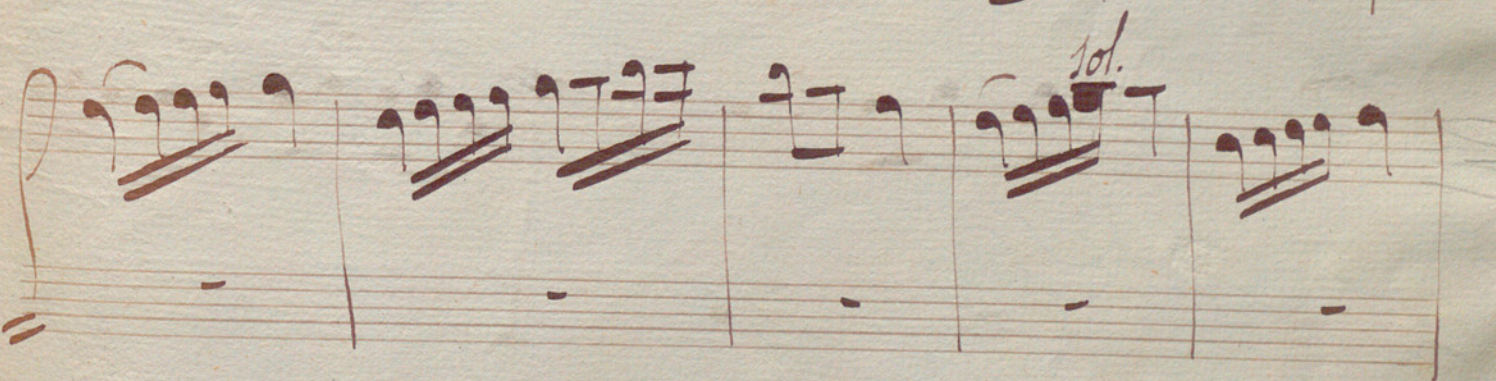
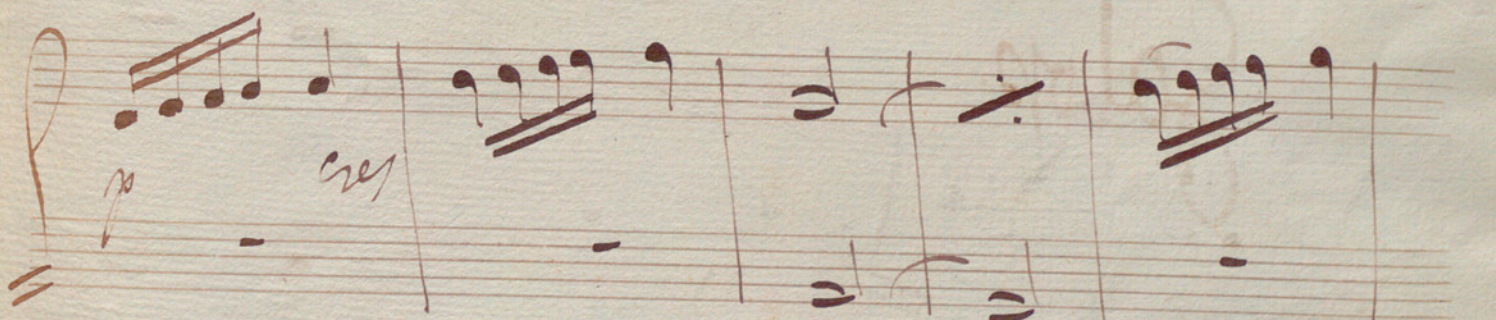
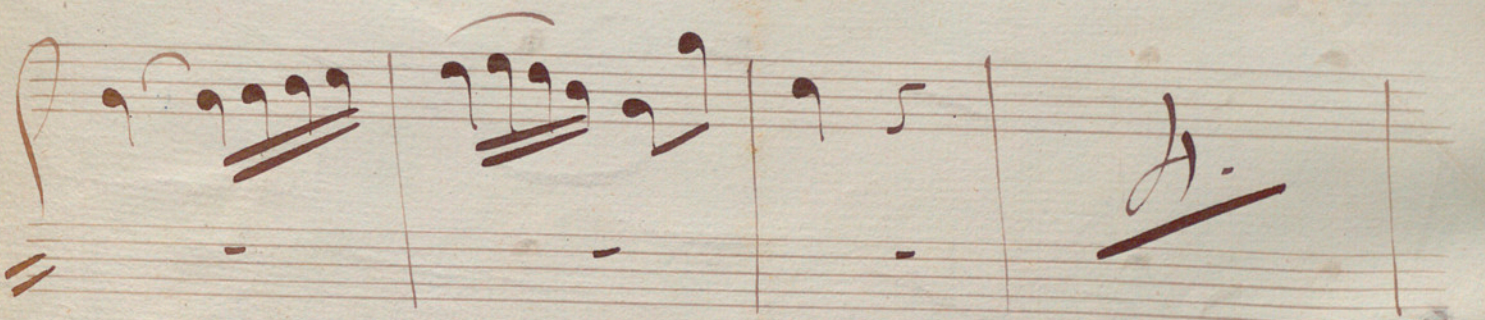
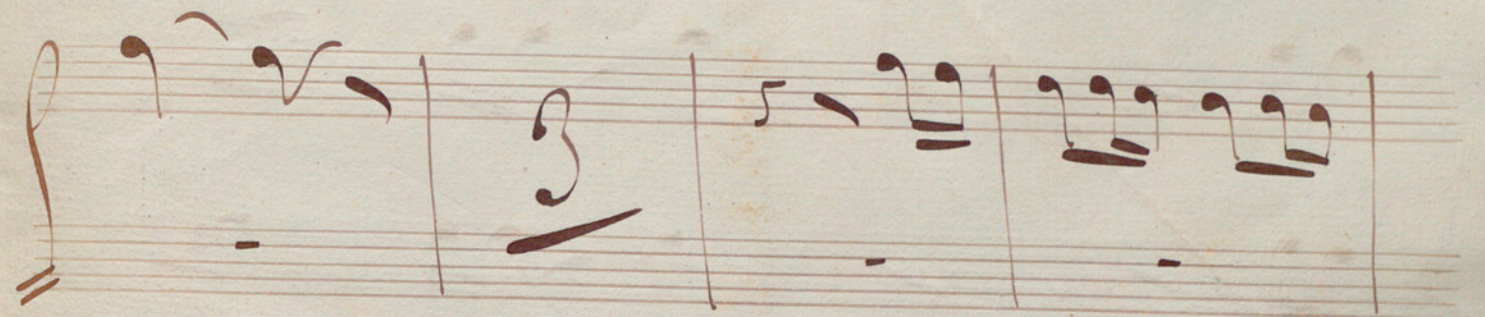
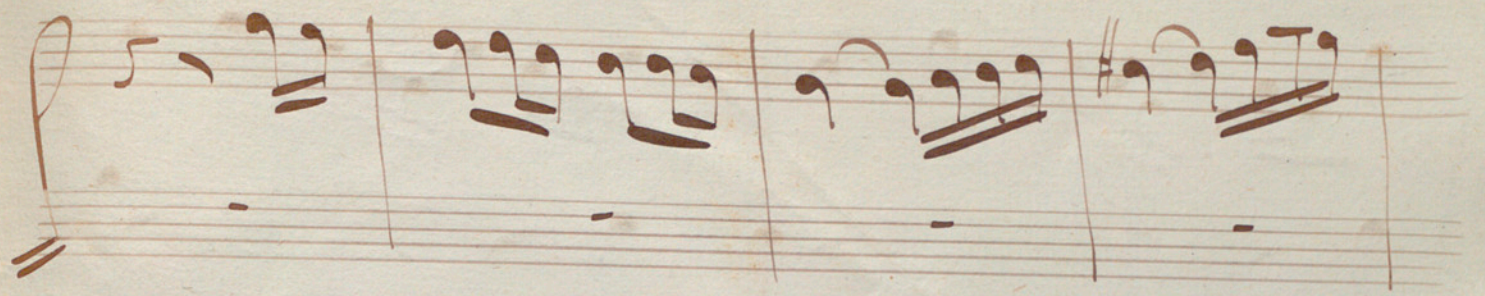




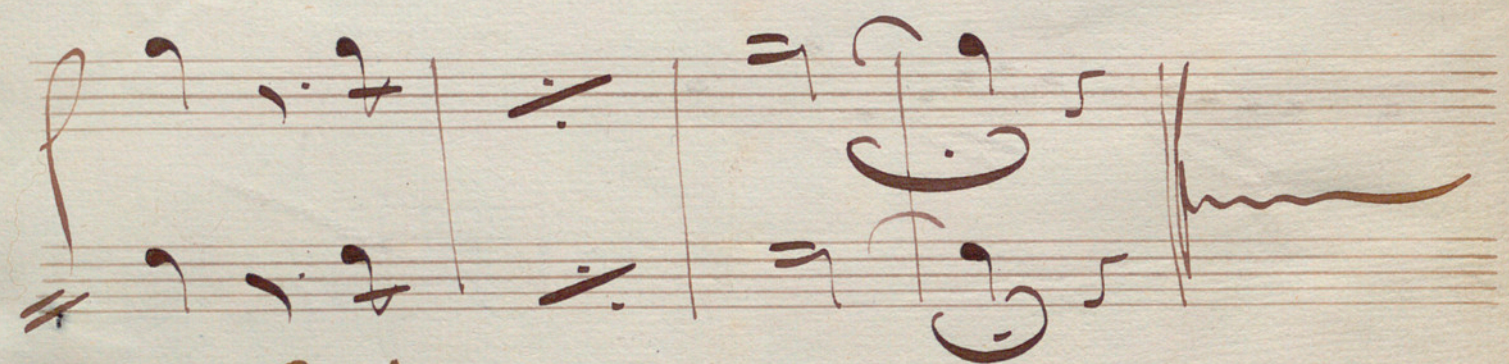
*Allegro*

Handwritten musical score for a two-staff piece in 2/4 time, marked *Allegro*. The score consists of six systems of two staves each. The notation includes treble and bass clefs, a key signature of one sharp (F#), and various rhythmic values such as eighth, sixteenth, and thirty-second notes. A large '9' is written above the first system, and a large '3' is written below the final system. The paper is aged and shows some staining.

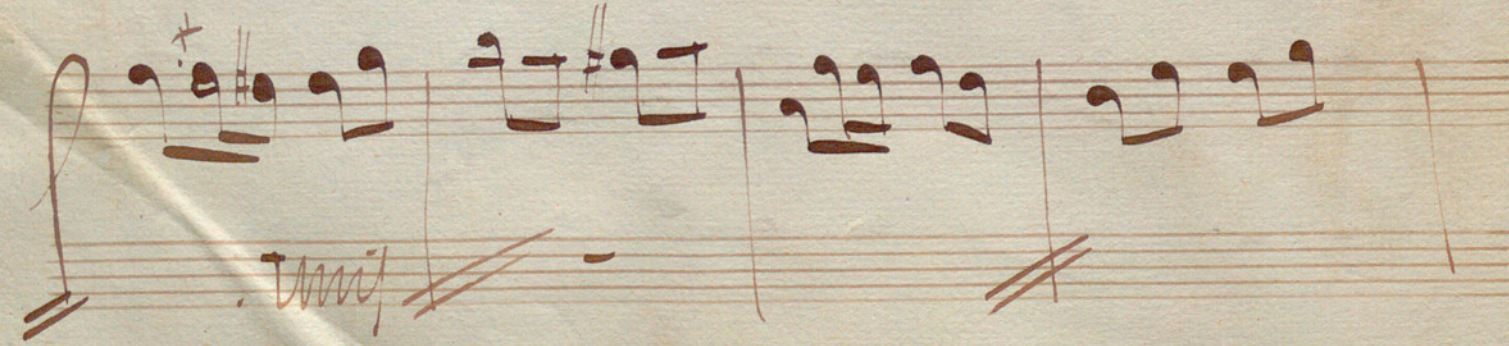
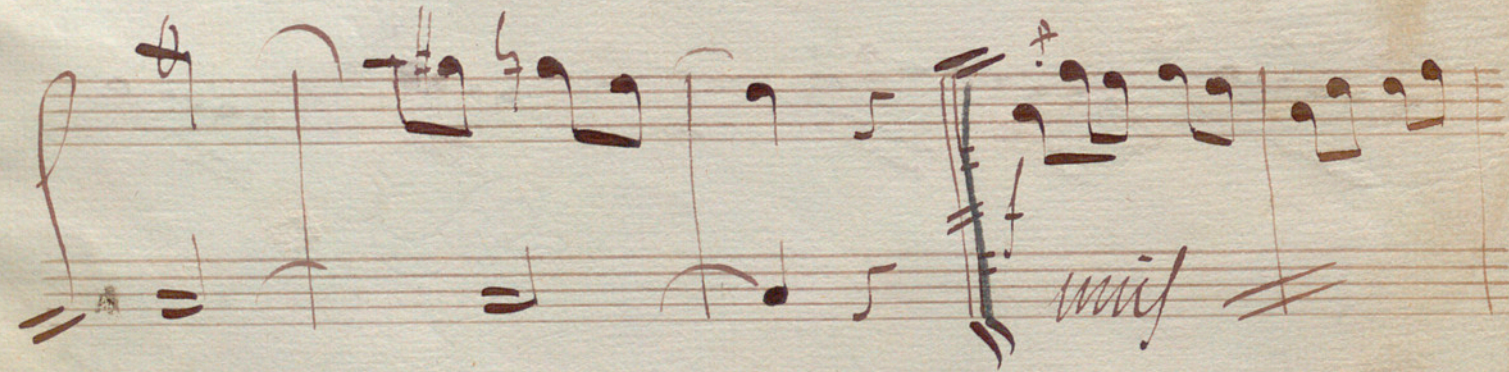
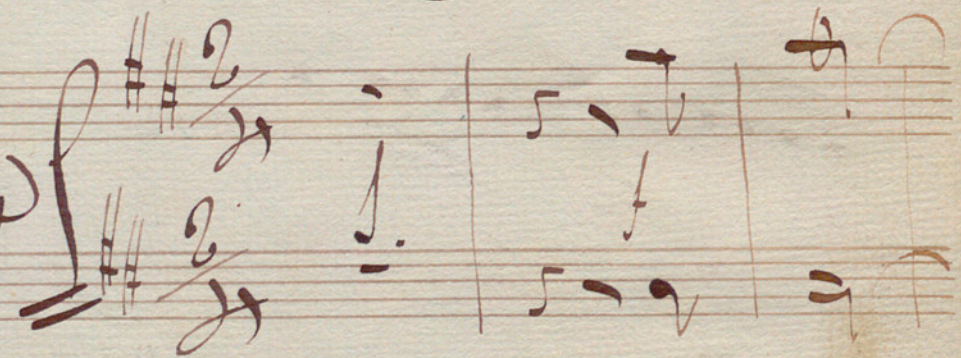








*Galop.*  
N<sup>o</sup>. 3. in D<sup>o</sup>





*p*  
*vrij*

8

*vrij*

*vrij*

*vrij*



Handwritten musical notation on a five-line staff. The music consists of a series of eighth and sixteenth notes. A sharp sign (#) is written above the first and third measures. The word "tutti" is written in cursive below the first measure. The staff ends with a double bar line and a repeat sign.

Handwritten musical notation on a five-line staff, continuing the piece. It features a melodic line with eighth and sixteenth notes. The staff concludes with a double bar line and a repeat sign.

Handwritten musical notation on a five-line staff. The top line contains a few notes, followed by a large "3." indicating a triplet. The bottom line contains a few notes and rests.

Handwritten musical notation on a five-line staff. The top line features a series of sixteenth notes. The bottom line contains a few notes and rests, with a large "3." indicating a triplet.

Handwritten musical notation on a five-line staff. The top line contains a melodic line with eighth and sixteenth notes. A large "X" is drawn over the final measure of the top line. The bottom line contains a few notes and rests.

Handwritten musical notation on a five-line staff. The top line contains a melodic line with eighth and sixteenth notes. The bottom line contains a few notes and rests, with a large "3." indicating a triplet. A large blue scribble is present at the bottom of the page, overlapping the staff.



A handwritten musical score on aged, yellowed paper. The score consists of eight staves of music. The first two staves are crossed out with a large blue 'X'. The third staff begins with a '3.' marking. The fourth staff contains the word 'tutti' written in cursive. The fifth staff features a double bar line followed by the word 'Coda.' written in cursive. The sixth staff has the word 'vivo' written in cursive. The seventh and eighth staves continue the musical notation. The paper shows signs of age, including foxing and some staining.

al n.º 16



Handwritten musical notation on a five-line staff, featuring a treble clef and a key signature of one sharp (F#). The notation includes quarter and eighth notes with stems, and rests. The paper shows signs of age and staining.

Handwritten musical notation on a five-line staff, continuing the piece. It includes dynamic markings such as "p" (piano) and "mf" (mezzo-forte) written in cursive. The notation consists of quarter and eighth notes.

Handwritten musical notation on a five-line staff, similar to the previous system. It features dynamic markings "p" and "mf" and includes some notes with slurs. The paper is aged and stained.

Handwritten musical notation on a five-line staff, showing a continuation of the melodic line. The notation includes quarter and eighth notes with stems.

Handwritten musical notation on a five-line staff, featuring a more complex rhythmic pattern with sixteenth notes and beams. The notation is dense and includes slurs.

Handwritten musical notation on a five-line staff, concluding the piece with a series of sixteenth notes and beams. The notation is dense and includes slurs.



Handwritten musical notation on two staves. The first staff begins with a treble clef and a 4/4 time signature. The second staff begins with a bass clef. The notation consists of rhythmic patterns of eighth and sixteenth notes.

Handwritten musical notation on two staves. The first staff continues with rhythmic patterns. The second staff features a large, decorative flourish that resembles a stylized 'S' or 'G' shape.

*Cantra en D<sup>o</sup>*

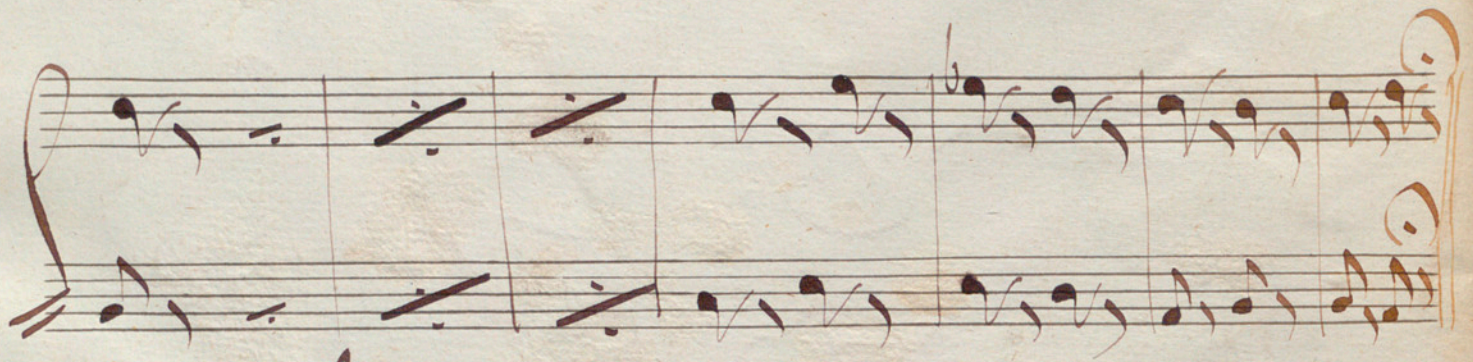
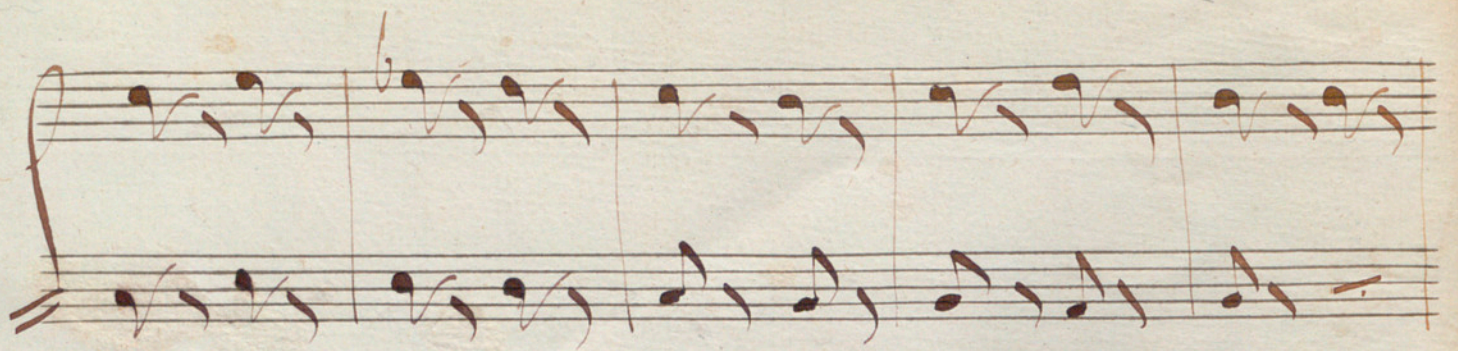
Handwritten musical notation on two staves. The first staff is heavily crossed out with multiple diagonal lines. The second staff contains rhythmic notation with some notes and rests.

Handwritten musical notation on two staves. The first staff contains rhythmic notation with many slanted lines. The second staff contains rhythmic notation with notes and rests.

Handwritten musical notation on two staves. The first staff contains rhythmic notation with notes and rests. The second staff contains rhythmic notation with notes and rests.

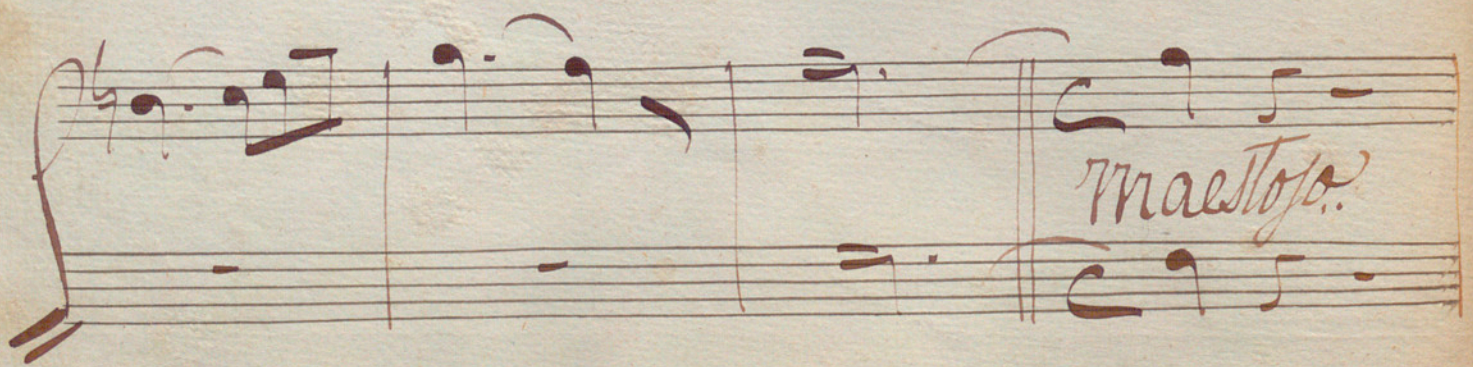
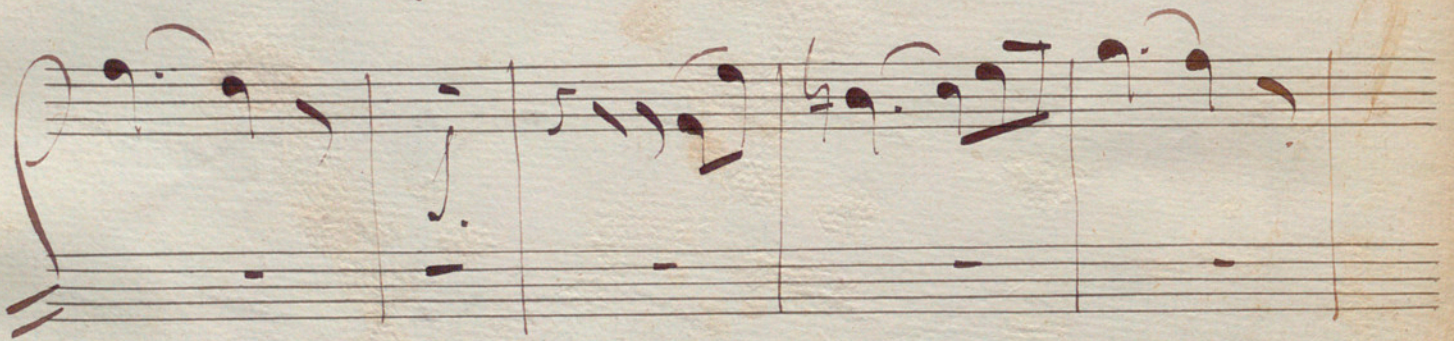
Handwritten musical notation on two staves. The first staff contains rhythmic notation with notes and rests. The second staff features a large, decorative flourish that resembles a stylized 'S' or 'G' shape.





*en la*

*All.<sup>o</sup> vivace*





Handwritten musical notation on a five-line staff. The notation includes various note values, rests, and a sharp sign (#) indicating a key signature. The music is written in a cursive style.

Handwritten musical notation on a five-line staff, continuing the piece from the previous system. It features similar note values and rests.

Handwritten musical notation on a five-line staff, showing further development of the musical theme with various rhythmic patterns.

Handwritten musical notation on a five-line staff, including a double bar line and a fermata-like symbol over a note.

Handwritten musical notation on a five-line staff, featuring a large, decorative flourish that spans across the staff lines.

Time

