



Gorni. 2<sup>da</sup> Coppia

La Sorella.

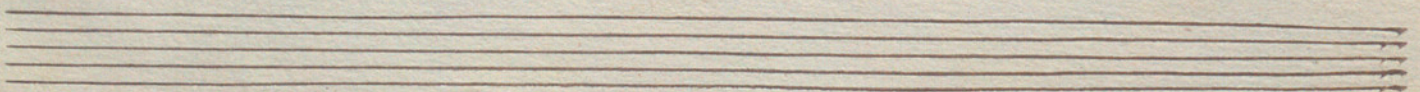
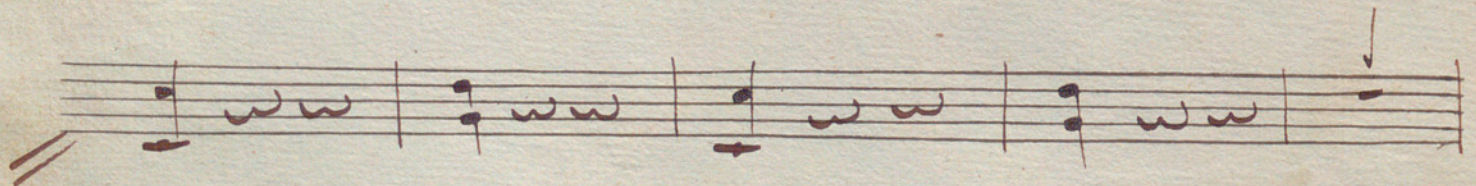
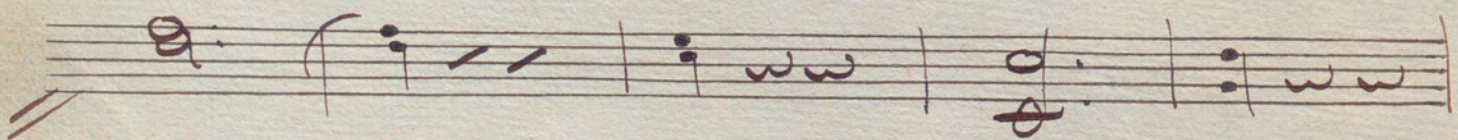
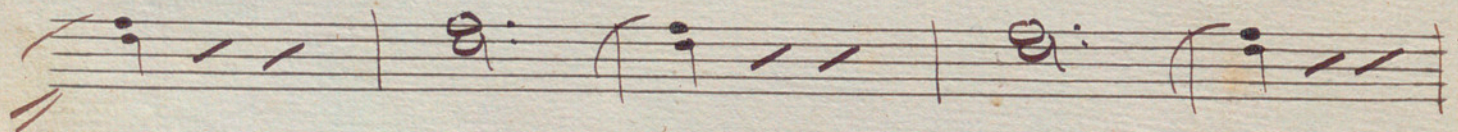
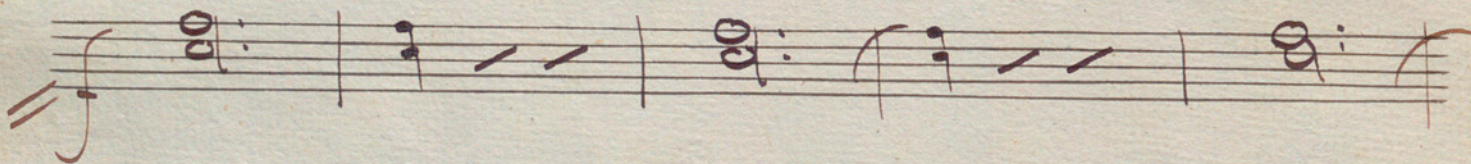
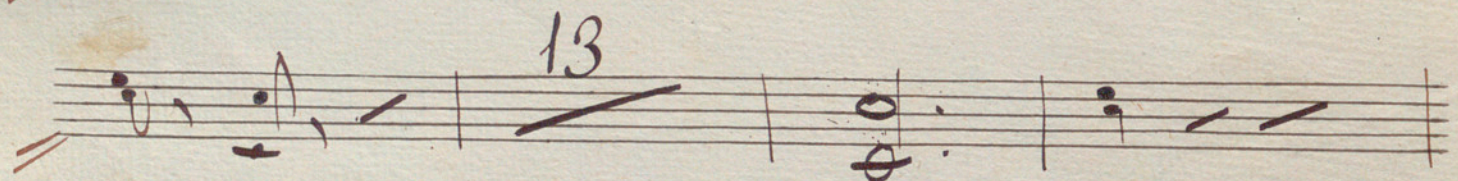
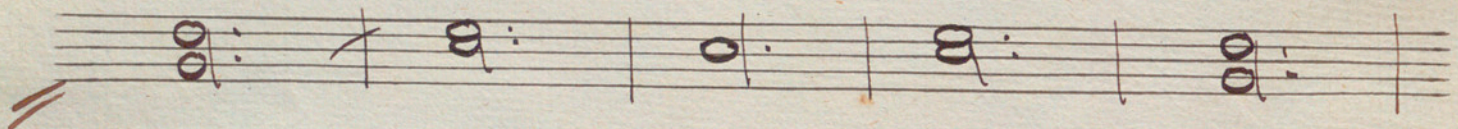
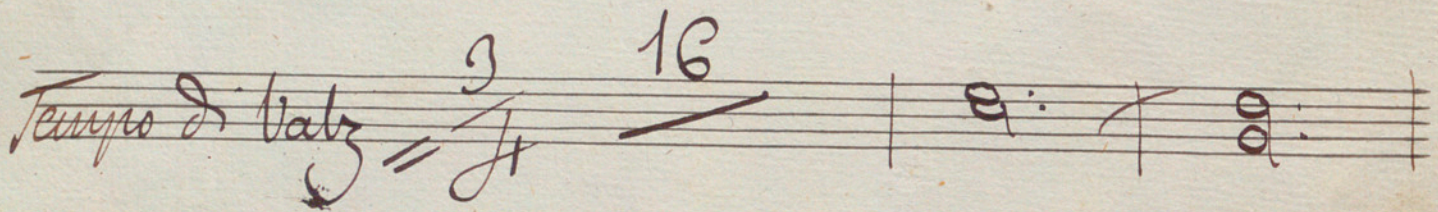
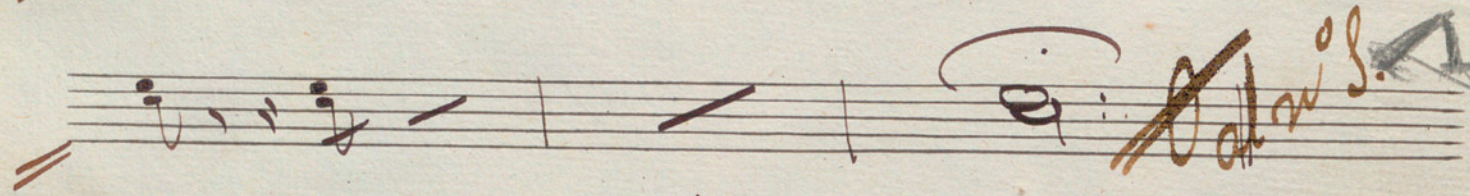
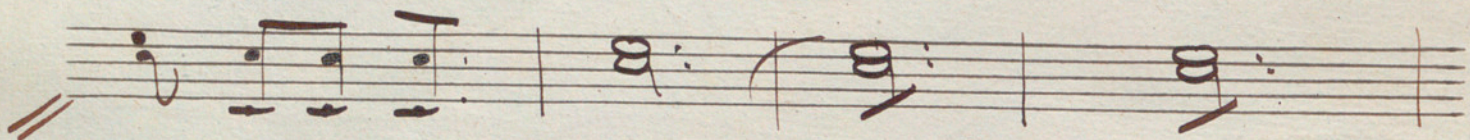
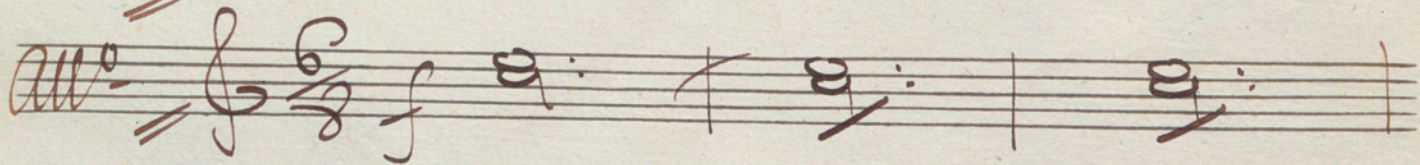
Terpsicore en la tierra.

Bayle en un acto.



*in Sib.*

# *Introd<sup>no</sup>*





A handwritten musical score on ten staves. The notation includes various note values, rests, and dynamic markings. The score is written in a cursive hand. The first staff begins with a treble clef and a key signature of one flat. The music consists of several measures with notes and rests. A '3' is written above the third staff, indicating a triplet. A 'p' (piano) marking is present in the first and fourth staves. A 'f' (forte) marking is present in the fifth and sixth staves. A '3' is written above the eighth staff. A '19' is written above the ninth staff. A '12' is written above the tenth staff. The piece concludes with the instruction 'All. vivace' written in cursive below the tenth staff. There are three empty staves at the bottom of the page.

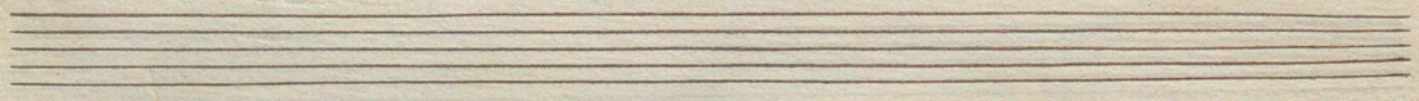
All. vivace



Handwritten musical notation on ten staves. The notation includes various rhythmic values such as eighth and sixteenth notes, rests, and beams. There are several instances of double bar lines with repeat signs (two slanted lines) at the beginning and end of phrases. The ink is dark brown on aged, slightly yellowed paper.

*No. 1. And*

Handwritten musical notation on five staves. The first staff begins with a treble clef and a common time signature (C). The notation features chords, mostly consisting of two notes, and includes a 3-measure rest (triple rest) on the fourth staff. There are also some slanted lines and accents. The paper shows signs of age and wear.





2

Handwritten musical notation on a five-line staff, featuring chords and a fermata.

rall:

mod-

Handwritten musical notation on a five-line staff, including the tempo markings 'rall:' and 'mod-'.

Handwritten musical notation on a five-line staff, showing a sequence of notes and rests.

2

2

Handwritten musical notation on a five-line staff, featuring a double bar line and a fermata.

3

Handwritten musical notation on a five-line staff, including a triplet marking.

Handwritten musical notation on a five-line staff, showing a sequence of notes and rests.

all.

Handwritten musical notation on a five-line staff, starting with the tempo marking 'all.' and a 6/8 time signature.

Handwritten musical notation on a five-line staff, showing a sequence of notes and rests.

Handwritten musical notation on a five-line staff, featuring a double bar line and a fermata.

Handwritten musical notation on a five-line staff, showing a sequence of notes and rests.

Handwritten musical notation on a five-line staff, showing a sequence of notes and rests.

3

Handwritten musical notation on a five-line staff, including a triplet marking.



*in Do* 12  
N<sup>o</sup> 2. *All<sup>o</sup>*

2 6 *in Sib.* 8  
*All<sup>o</sup> agit<sup>o</sup>*

3







*No. 1. And<sup>mo</sup>*  $\frac{2}{4}$

*All. vivace*  $\frac{2}{4}$

*All. f*  $\frac{3}{4}$



Handwritten musical notation on a single staff, featuring a treble clef, a common time signature (C), and a fermata over the first measure. A large number '2' is written above the second measure. The notation includes various note values and rests.

Handwritten musical notation on a single staff, featuring a treble clef and a common time signature (C). The notation includes various note values and rests.

Handwritten musical notation on a single staff, featuring a treble clef and a common time signature (C). The notation includes various note values and rests.

*And<sup>te</sup>*  
*2<sup>do</sup> de Cuatro*

Handwritten musical notation on a single staff, featuring a treble clef and a common time signature (C). The notation includes various note values and rests.

Handwritten musical notation on a single staff, featuring a treble clef and a common time signature (C). The notation includes various note values and rests.

Handwritten musical notation on a single staff, featuring a treble clef and a common time signature (C). The notation includes various note values and rests.

Handwritten musical notation on a single staff, featuring a treble clef and a common time signature (C). The notation includes various note values and rests.

Handwritten musical notation on a single staff, featuring a treble clef and a common time signature (C). The notation includes various note values and rests.

Handwritten musical notation on a single staff, featuring a treble clef and a common time signature (C). The notation includes various note values and rests.

Handwritten musical notation on a single staff, featuring a treble clef and a common time signature (C). The notation includes various note values and rests.

Handwritten musical notation on a single staff, featuring a treble clef and a common time signature (C). The notation includes various note values and rests.

Handwritten musical notation on a single staff, featuring a treble clef and a common time signature (C). The notation includes various note values and rests.



*al Papelsuelto*

*al bazz.*

*Par de quatre*

*in G major*

*No 5 And*

*al w 6.*

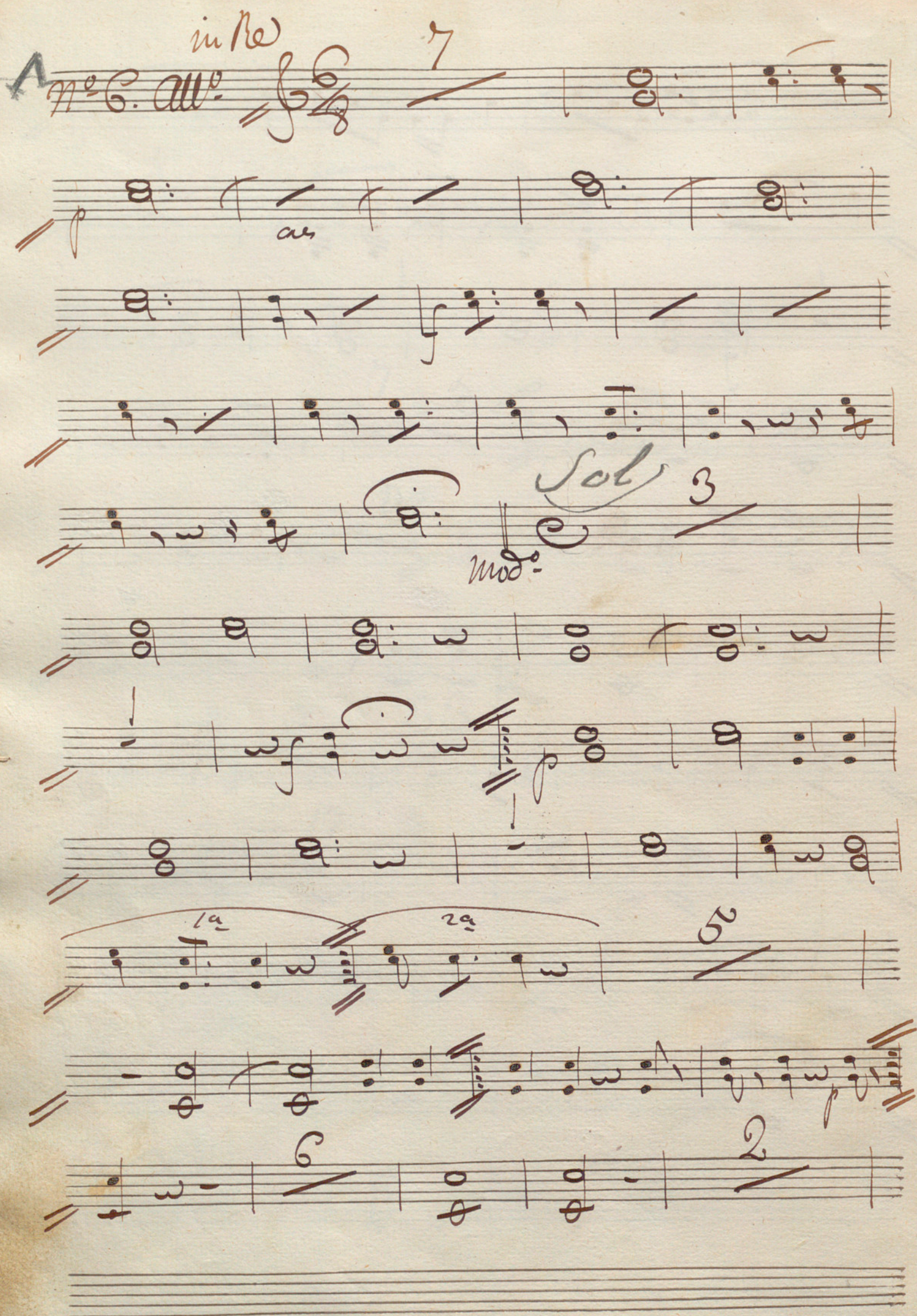


All<sup>to</sup>

2

A handwritten musical score on aged, yellowed paper. The score consists of ten staves of music, written in brown ink. The notation includes various notes, rests, and clefs. The first staff begins with a treble clef and a 2/4 time signature. The music is written in a cursive, handwritten style. There are several measures with notes, some of which are beamed together. The paper shows signs of age, including creases and discoloration. The overall appearance is that of a historical manuscript.



*in Re*  
No. 6. *All.* 

*7*

*as*

*Sol* 3

*mod.*

1<sup>a</sup> 2<sup>a</sup> 25

6 2



Musical staff with a treble clef, a whole rest, and a triplet of eighth notes. A large number '3' is written above the staff.

Musical staff with a treble clef, a 2/4 time signature, and the number '21'. The text 'in fa' is written above the staff, and 'all<sup>to</sup>' is written below it.

Musical staff with a treble clef, a whole rest, and a triplet of eighth notes.

Musical staff with a treble clef, a whole rest, and a triplet of eighth notes. The text 'rall' and 'tempo' is written below the staff.

Musical staff with a treble clef, a whole rest, and a triplet of eighth notes.

Musical staff with a treble clef, a whole rest, and a triplet of eighth notes.

Musical staff with a treble clef, a whole rest, and a triplet of eighth notes.

Musical staff with a treble clef, a whole rest, and a triplet of eighth notes. A large 'A' is written at the end of the staff.

Musical staff with a treble clef, a 6/8 time signature, and the text 'And' written below it.

Musical staff with a treble clef, a 2/4 time signature, and the text 'all<sup>to</sup>' written below it.

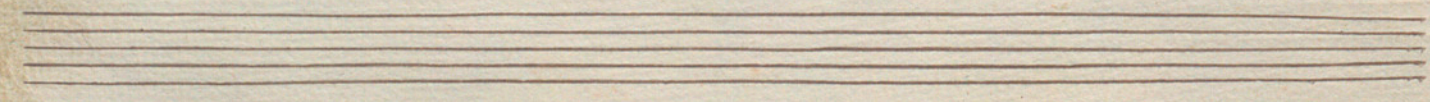
Two empty musical staves at the bottom of the page.

*M.D.*



~~All.<sup>o</sup> 2/4~~

*in Sol.*  
N<sup>o</sup> 8. Lento





5

3 Solo

Solo p

2

in Sib.

16

16



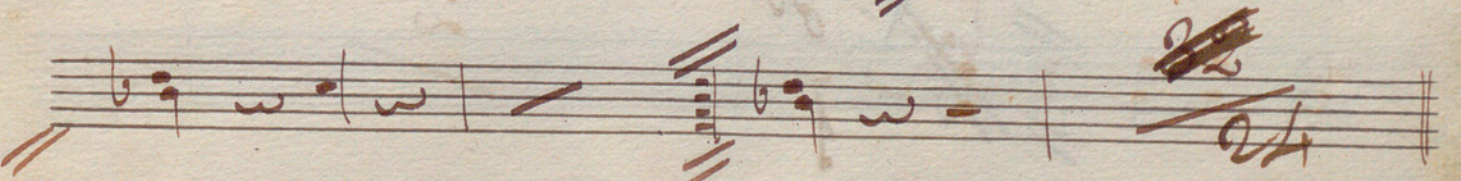
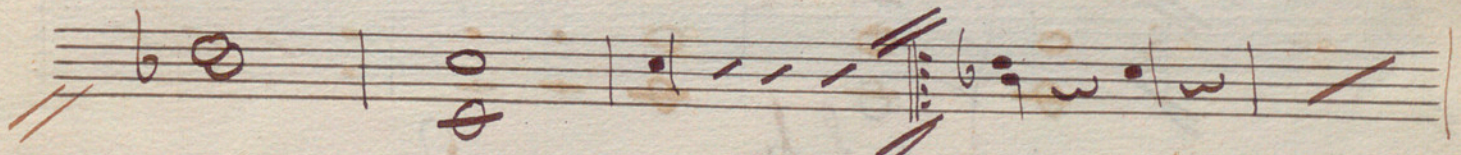
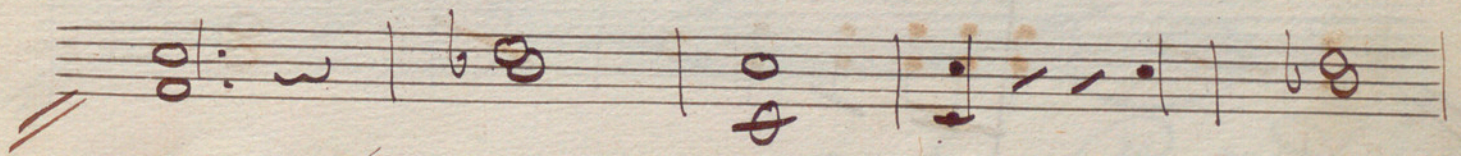
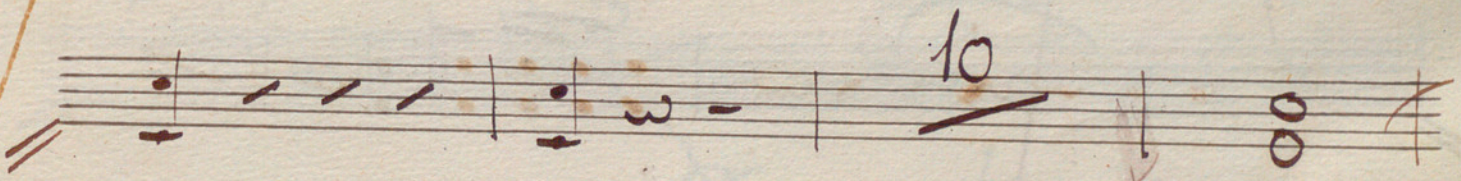
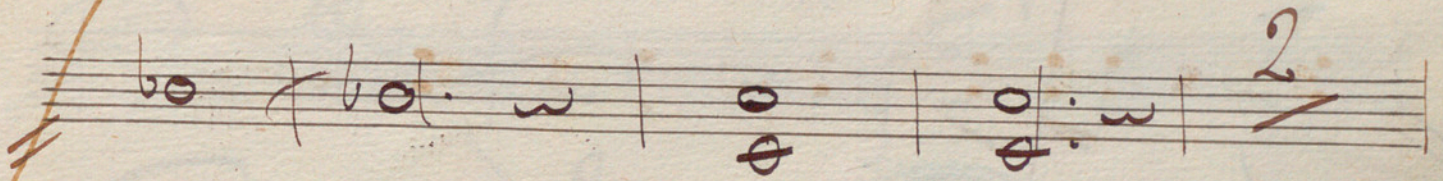
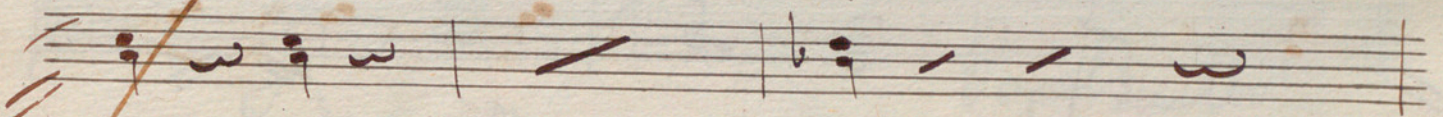
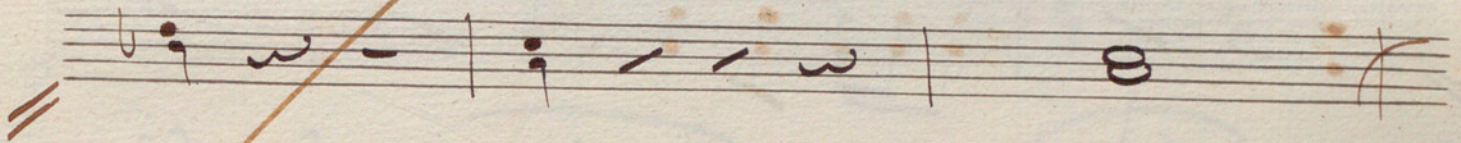
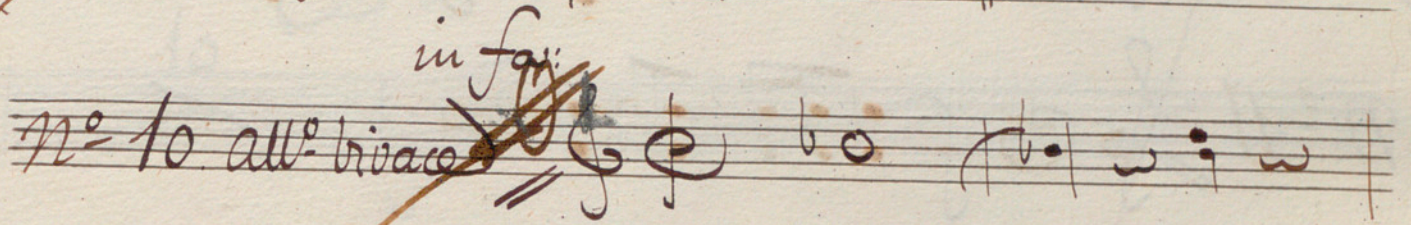
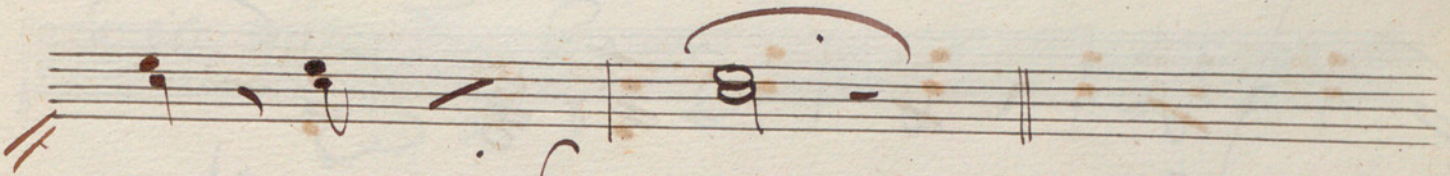
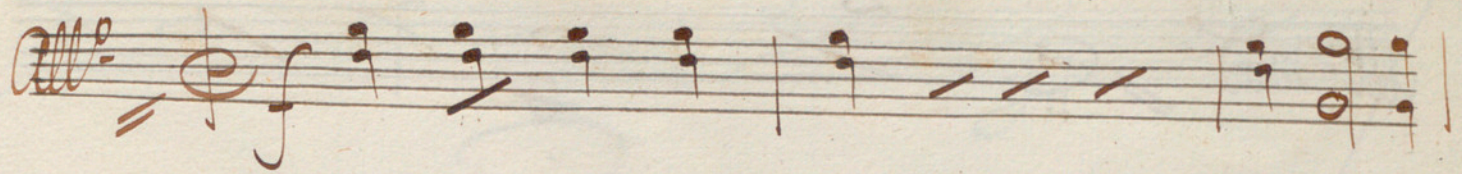
*Allegro*  $\frac{2}{4}$  *f*

*Molto*  $\frac{6}{8}$

*Allegro*  $\frac{2}{4}$  *f*

*Molto*







in Sol.

2

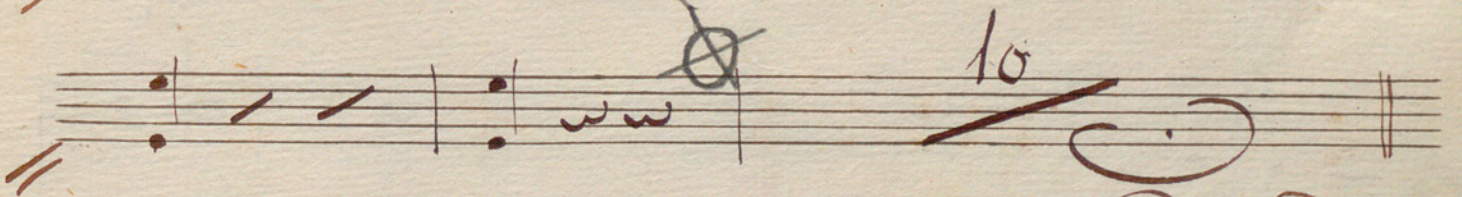
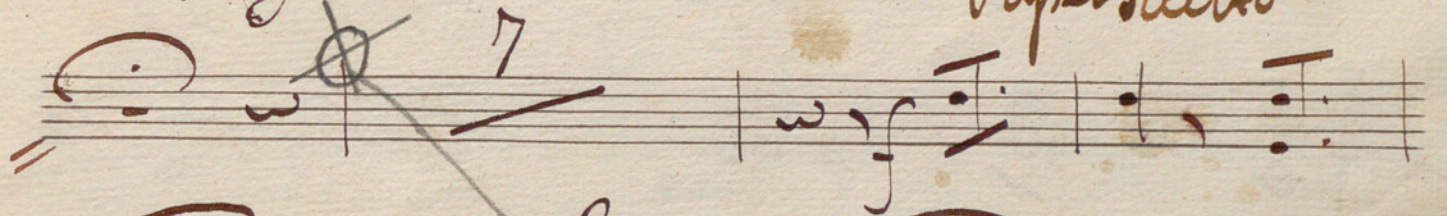
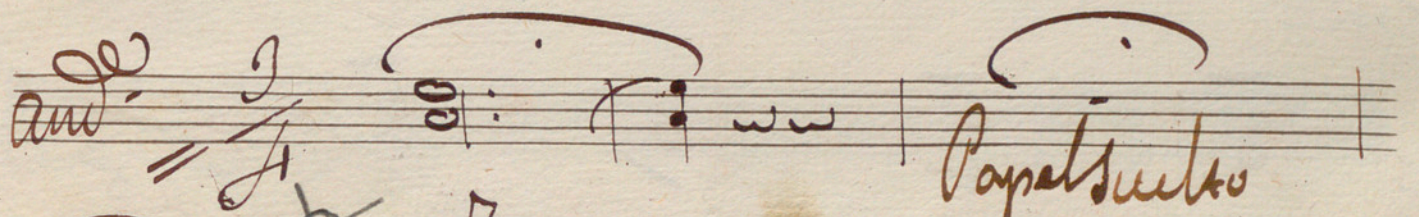
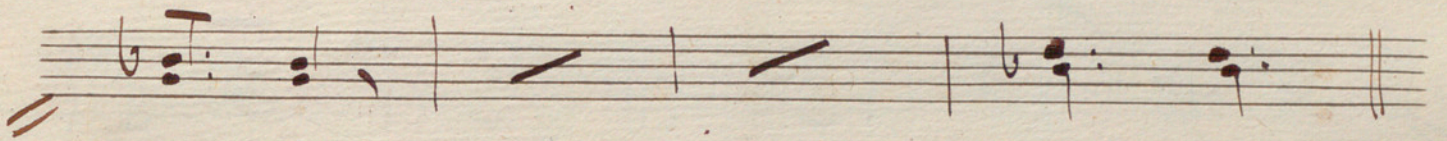
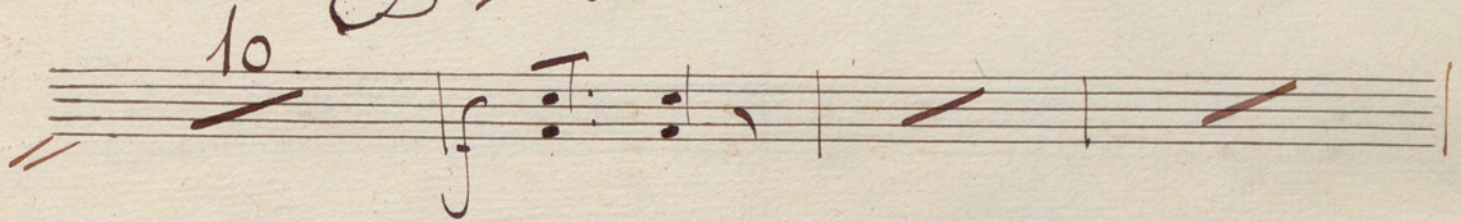
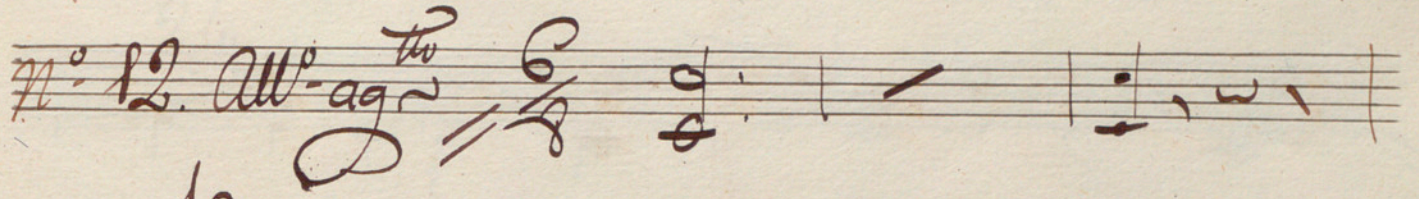
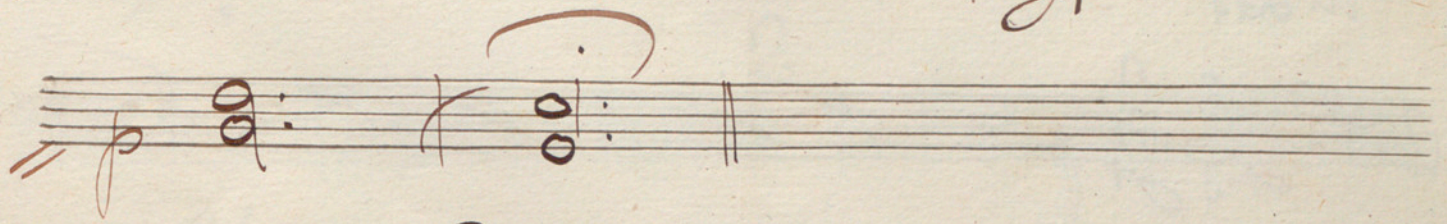
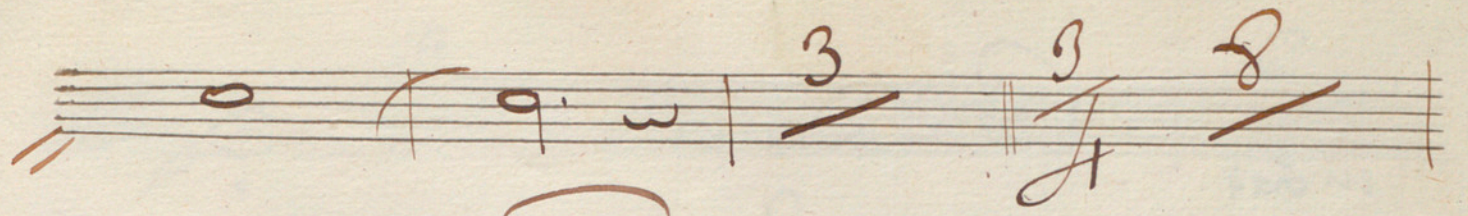
~~All<sup>o</sup> mod<sup>o</sup>~~

No. 11

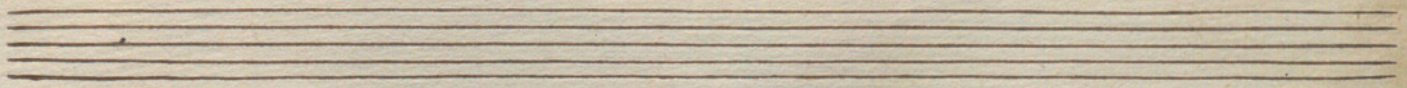
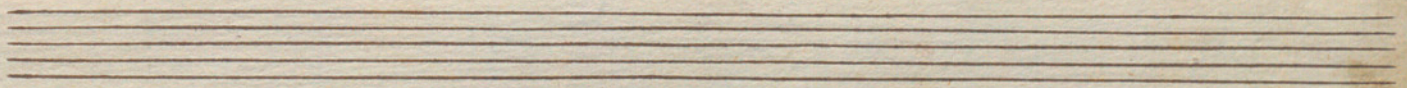
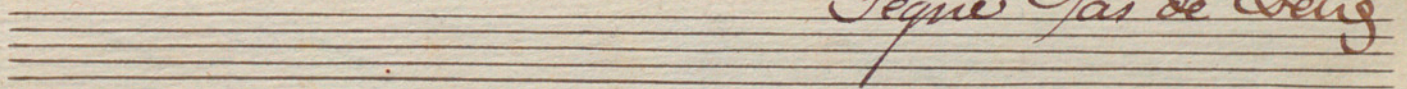
~~Sol~~

2






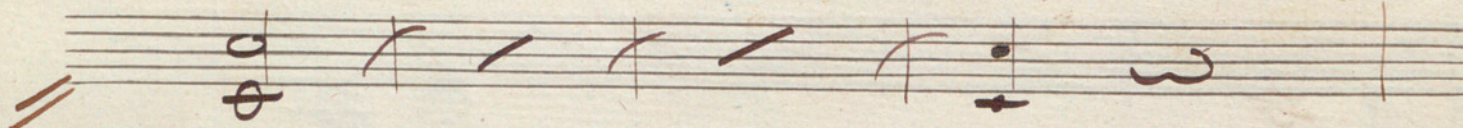
*Segue Pas de Deux*





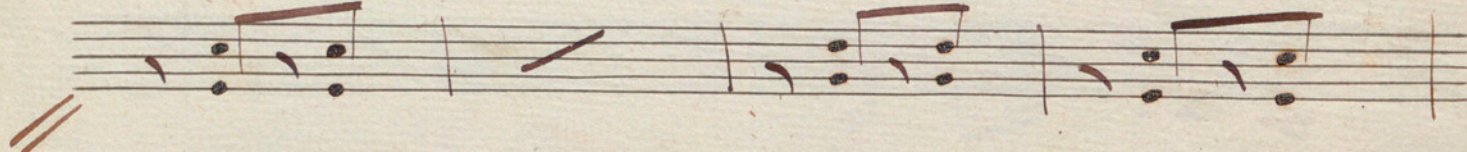
in La!

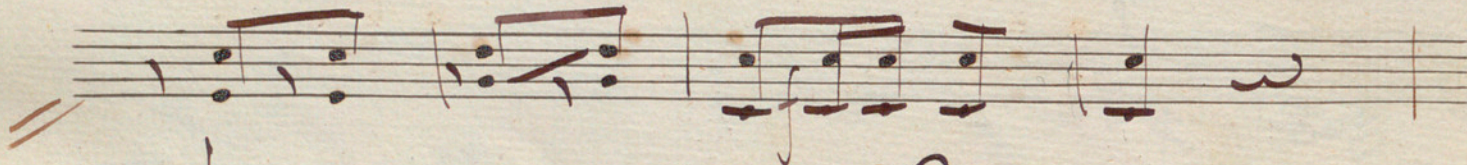
N<sup>o</sup> 13. Galop. 

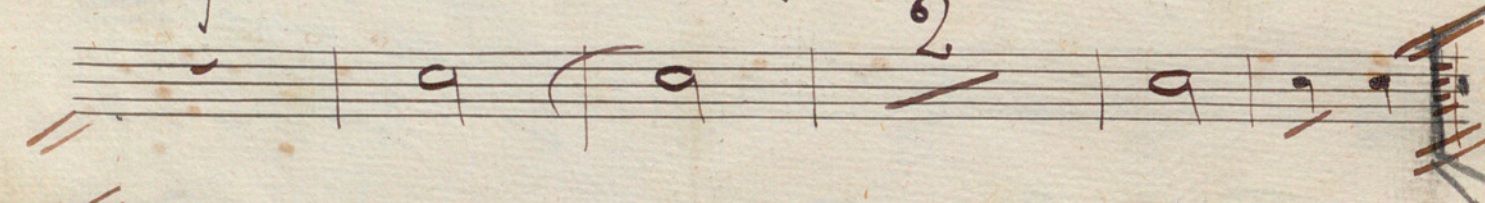


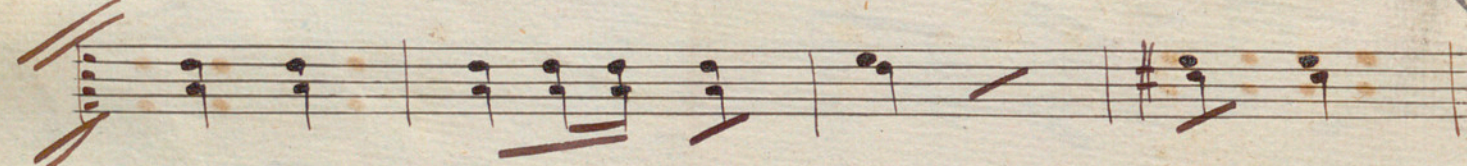


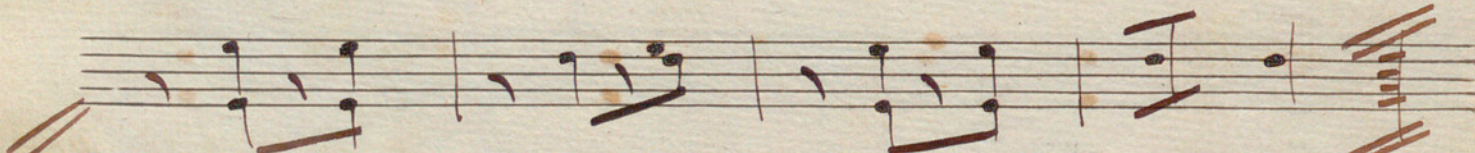


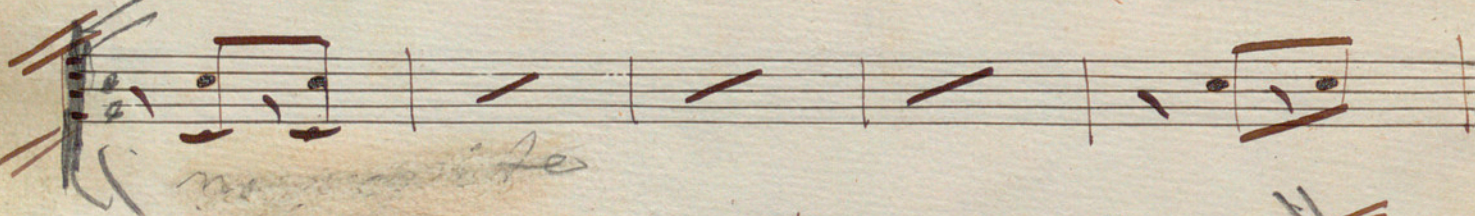





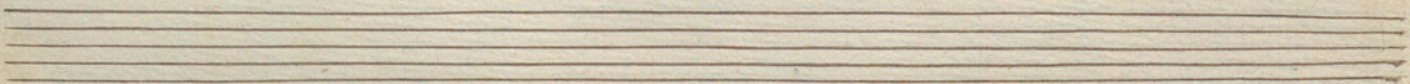






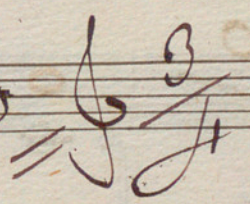








Handwritten musical score consisting of ten staves. The notation includes treble clefs, a key signature of one flat (B-flat), and a 2/4 time signature. The music features various rhythmic values such as eighth and sixteenth notes, rests, and beams. A section of the score is marked with a double bar line and the word "Coda" written above it. The piece concludes with a final cadence.

N<sup>o</sup> 1. Allemande  al n<sup>o</sup> 56

Handwritten musical notation for the beginning of the Allemande. It consists of two staves. The first staff shows the initial notes in a treble clef with a 3/4 time signature and a key signature of one flat. The second staff contains a large, stylized signature or flourish.



This image shows a page of handwritten musical notation on ten staves. The notation includes various note values, rests, and dynamic markings. The first staff begins with a treble clef and a common time signature. The notation is dense, with many notes and rests. There are several markings that look like the Greek letter phi (φ) or similar symbols. A large number '3' is written above the third staff, and another '3' is written above the eighth staff. A '10' is written above the ninth staff. The paper is aged and shows some staining and wear, particularly at the bottom left corner.



*cres*

*No 15 all-voice*

*Molto*



Handwritten musical notation on five staves. The notation includes various note values, rests, and bar lines. The paper shows signs of age and wear.

*in Sol:*  
No. 16.

Handwritten musical notation on a single staff, consisting of several notes and rests.

Handwritten musical notation on a single staff, consisting of several notes and rests.

Handwritten musical notation on a single staff, featuring a long note with a slur and other notes.

Handwritten musical notation on a single staff, including a slur over a group of notes and a dynamic marking.

*alle vivace*

Handwritten musical notation on a single staff, featuring a series of notes with stems and beams.

Handwritten musical notation on a single staff, including notes, rests, and a dynamic marking.

Two empty musical staves at the bottom of the page.



*maest<sup>o</sup>*

Handwritten musical notation on six staves. The notation includes various notes, rests, and dynamic markings such as 'f' and 'maest<sup>o</sup>'. The first staff begins with a treble clef and a double bar line. The notation is dense and includes many slanted lines and rests.

*finis*

Handwritten musical notation on four staves, featuring large, decorative flourishes and a signature-like scribble.