

51282-1

LE MOULIN JOLI

Quadrille.

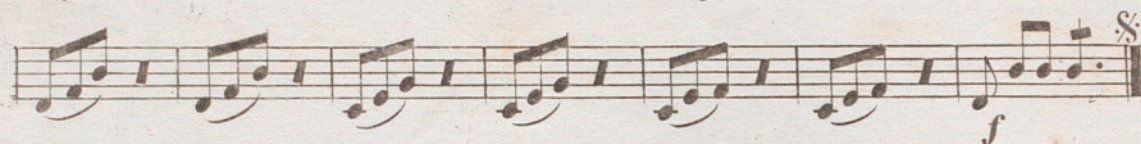
2^d. VIOLON.

par P. MUSARD.

N^o 1. 



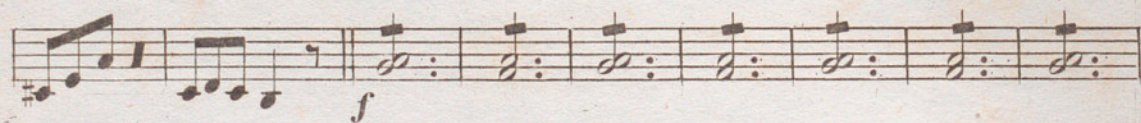


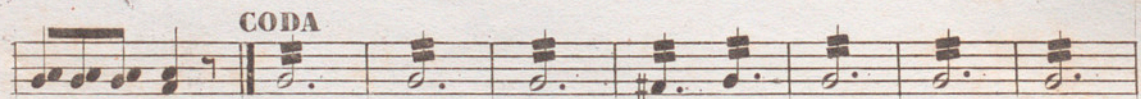


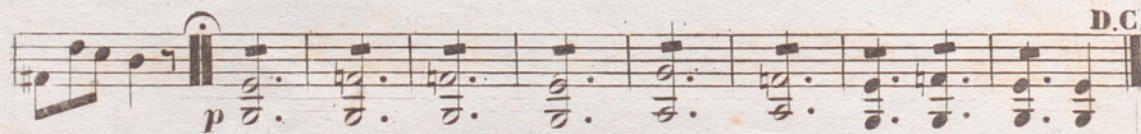
N^o 2. 

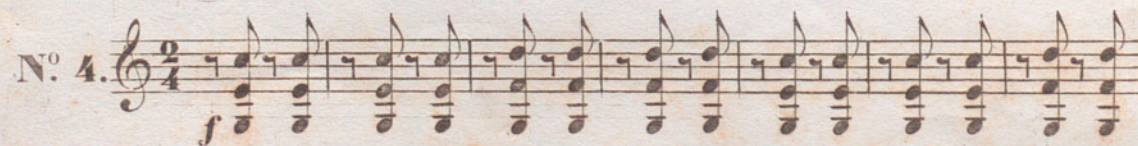


N^o 3. 



CODA




N^o 4. 

1^{re} et 3^e fois.

f p f p f p f p f p f p f p

f p f p f p f p f p f p f p f p

f p f p f p f p f p f p f

2^e et 4^e fois.

f

f

f

N^o 5.

p

f

1^{re} et 3^e fois.

f

2^e et 4^e fois.

f

f

LE MOULIN JOLI

ALTO

Par P. MUSARD.

Quadrille

N^o 1. *f*

f

CODA.

p *f*

N^o 2. *f* *sf*

1^a 2^a *f*

N^o 3. *p*

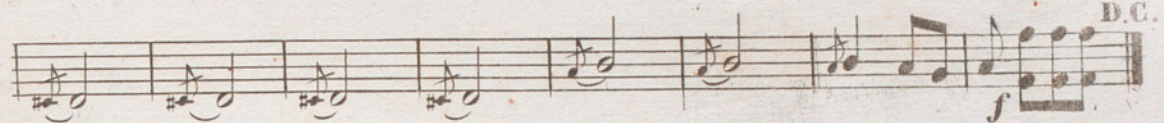
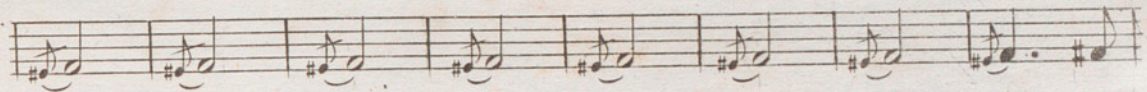
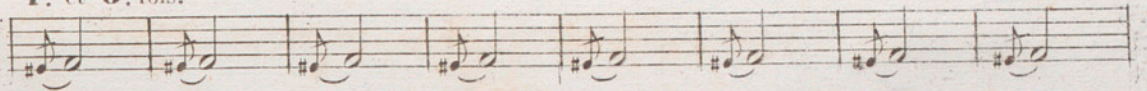
f

CODA.

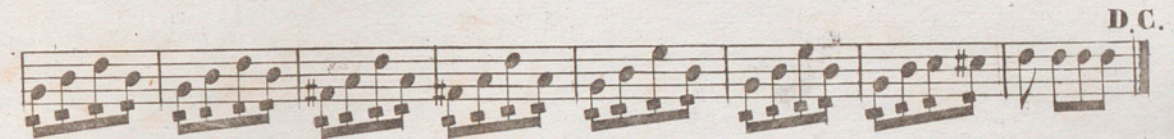
p

N^o 4. *f*

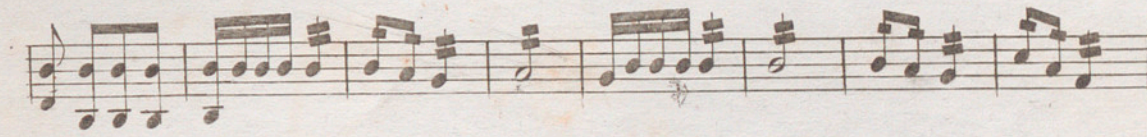
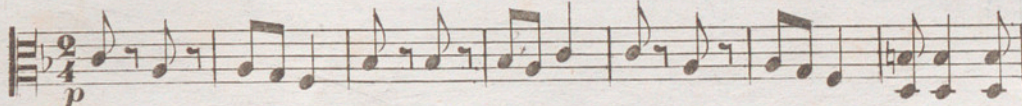
1^{re} et 3^e fois.



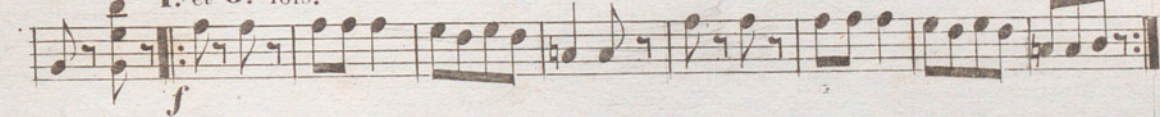
2^e et 4^e fois.



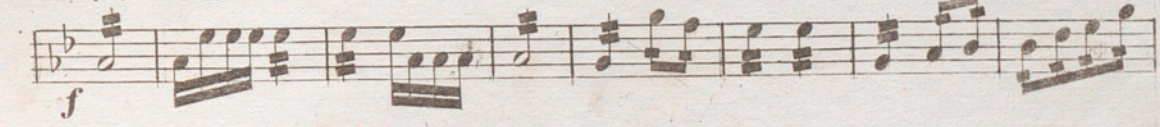
N^o 5.



1^{re} et 3^e fois.



2^e et 4^e fois.



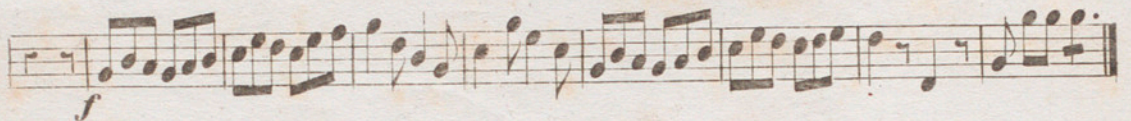
LE MOULIN JOLI

BASSE.

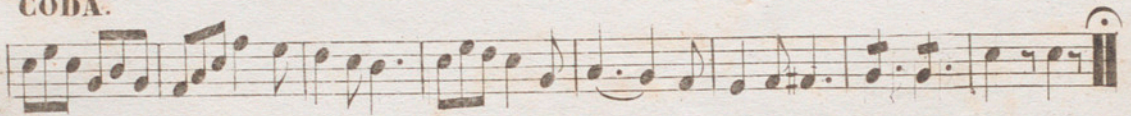
par P. MUSARD.

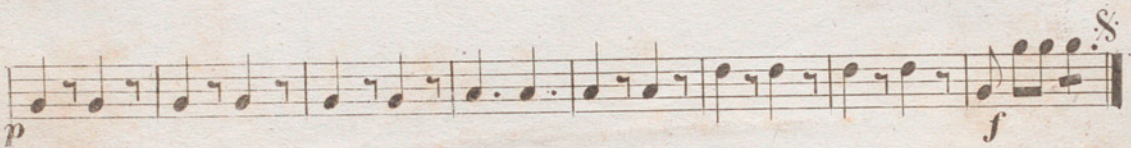
Quadrille

N^o. 1. 



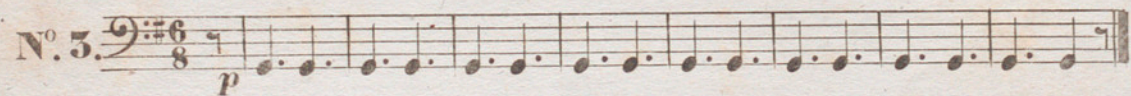
CODA.





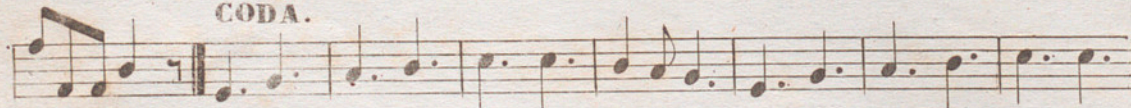
N^o. 2. 

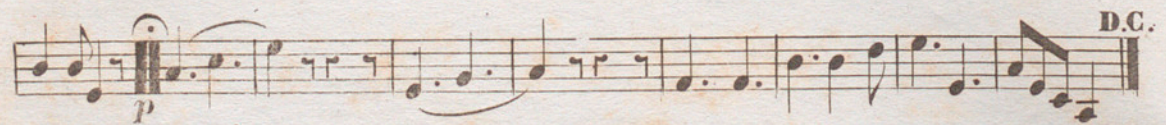


N^o. 3. 



CODA.





N^o. 4. 

1^{re} et 3^e fois.

Musical staff with eighth-note patterns. Dynamics: *f p* *f p* *f p* *f p* *f p* *f p* *f p* *f p*

Musical staff with eighth-note patterns. Dynamics: *f p* *f p* *f p* *f p* *f p* *f p* *f p*

Musical staff with eighth-note patterns. Dynamics: *fp* *f p* *fp* *fp* *fp* *fp* *fp* *f* **D.C.**

2^e et 4^e fois.

Musical staff with eighth-note patterns and trills (*tr*). Dynamics: *fp*

Musical staff with eighth-note patterns and trills (*tr*). Dynamics: *fp*

Musical staff with eighth-note patterns and trills (*tr*). Dynamics: *fp* **D.C.**

N^o 5

Musical staff with eighth-note patterns. Dynamics: *p*

Musical staff with eighth-note patterns. Dynamics: *f*

1^{re} et 3^e fois.

Musical staff with eighth-note patterns. Dynamics: *f*

2^e et 4^e fois.

Musical staff with eighth-note patterns. Dynamics: *f*

Musical staff with eighth-note patterns. Dynamics: *f* **D.C.**

LE MOULIN JOLI

Quadrille.

Par P. MUSARD.

FLUTE.

N^o 1. *f*

f

CODA.

p

 .D C

N^o 2. *f*

fz

1^{re} et 4^e fois.

SOLO. *tr*

3^e fois.

 1^a 2^a

N^o 3. *p*

tr

tr

CODA.

p

N^o 4 *f* *tr*

D.C. 2^e et 4^e fois. *tr*

tr

tr

tr D.C.

N^o 5 *p*

1^e et 3^e fois. *tr*

D.C. 2^e et 4^e fois. *f*

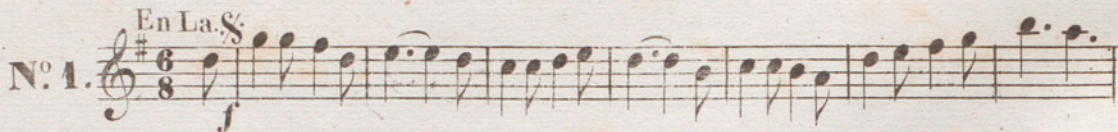
D.C.

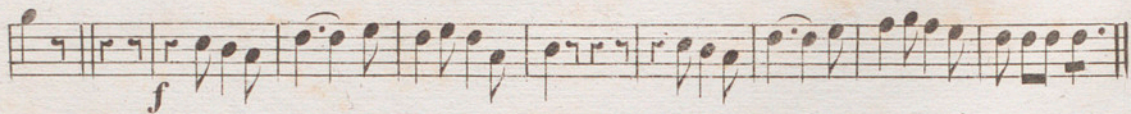
LE MOULIN JOLI

1^{re} CLARINETTE.

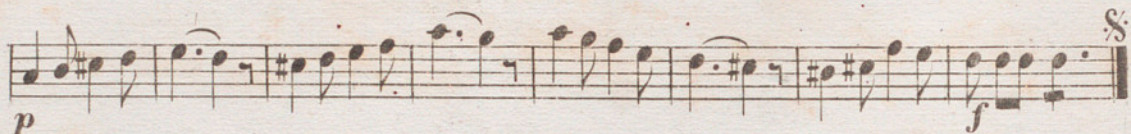
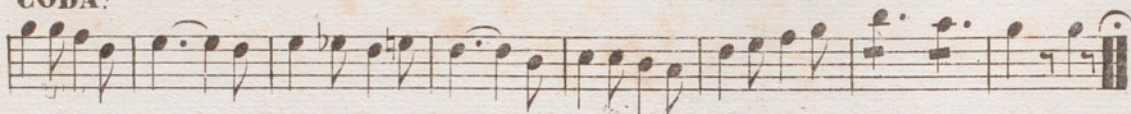
Par P. MUSARD.

Quadrille.

N^o 1. *En La.* 



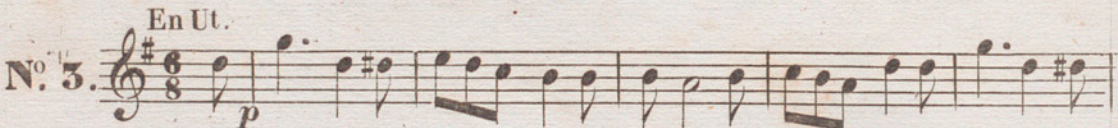
CODA.

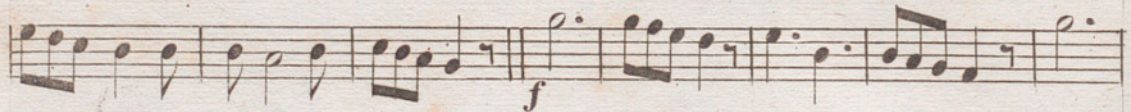


N^o 2. 

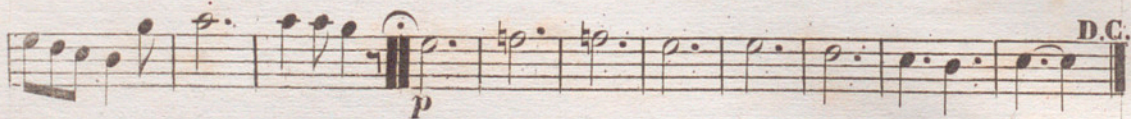

1^{re} et 4^e fois.

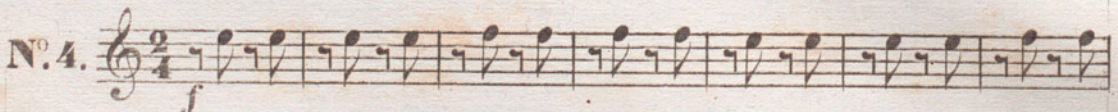


N^o 3. *En Ut.* 

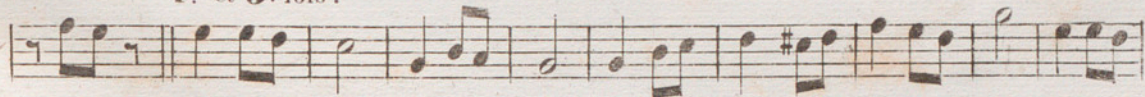


CODA.

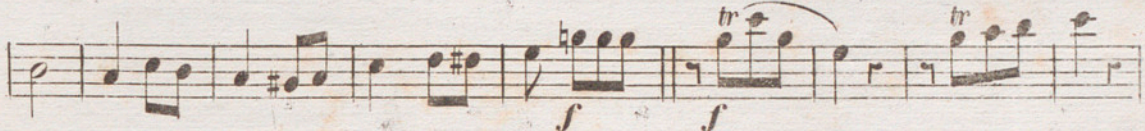


N^o 4. 

1^{re} et 3^e fois.



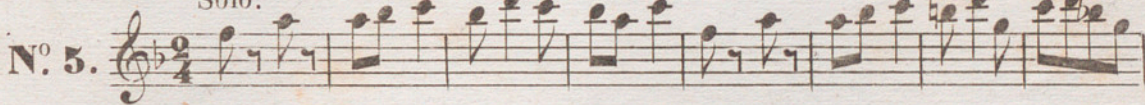
2^e et 4^e fois.



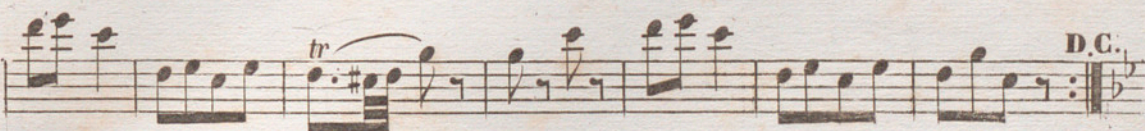
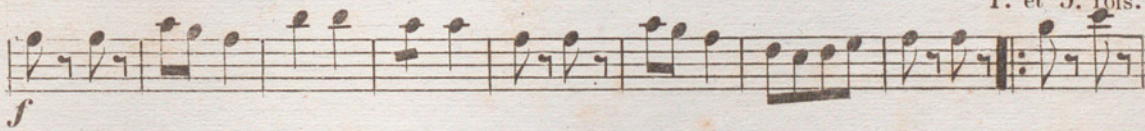
D.C.

Solo.

1a 2a 3a 5a

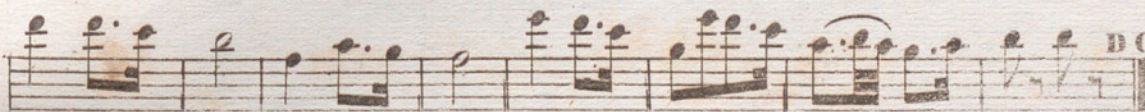


1^{re} et 3^e fois.



D.C.

2^e et 4^e fois.



D.C.

LE MOULIN JOLI

Quadrille.

Par P. MUSARD.

2^{me} CLARINETTE

N^o 1. En La. f

N^o 2. f fz

1^{re} et 4^e fois.

1^a 2^a

N^o 3. En Ut. f

8

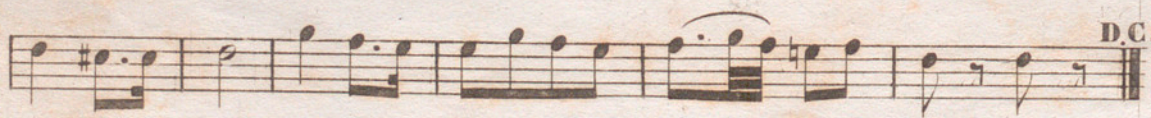
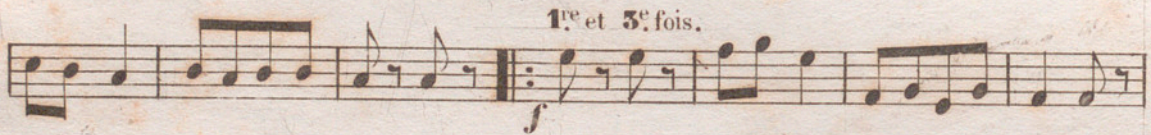
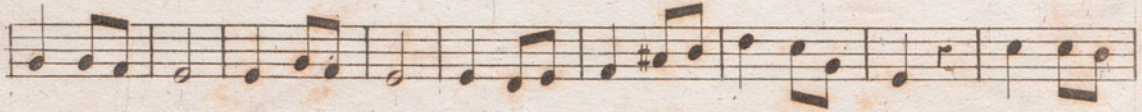
CODA.

D.C.

p

N^o 4. f

1^e et 3^e fois.




LE MOULIN JOLI

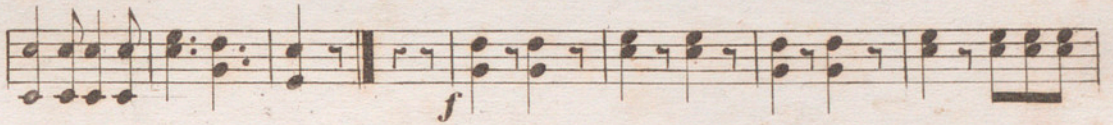
1^{er} et 2^e CORS.

Par P. MUSARD.

Quadrille.

En Mi.

N^o 1. 



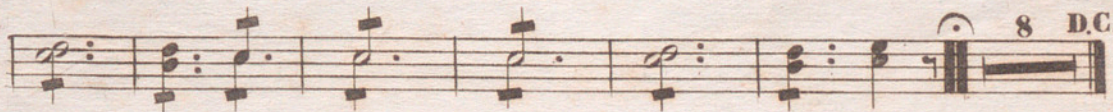
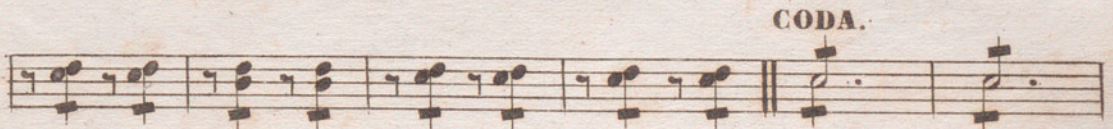
En La.

N^o 2. 

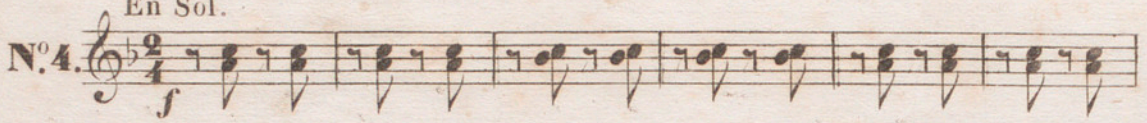


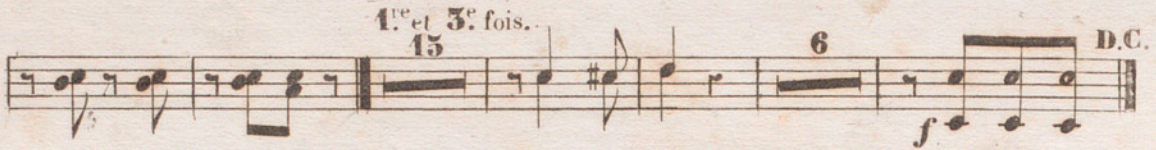
En Sol:

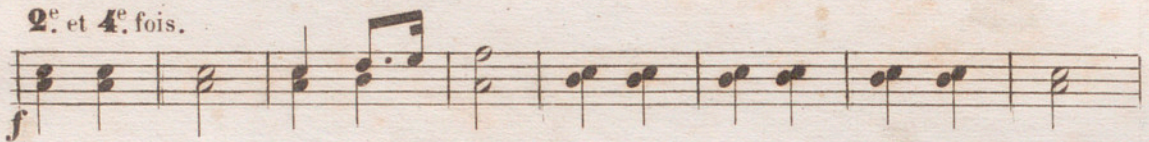
N^o 3. 



En Sol.

N^o. 4. 

 1^{re} et 3^e fois. 15 6 D.C.

2^e et 4^e fois.  f



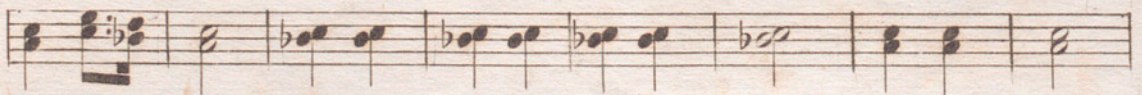
 D.C.

En Fa.

N^o. 5.  8

 1^{re} et 3^e fois. f

 D.C. 2^e et 4^e fois. f



 D.C.

LE MOULIN JOLI

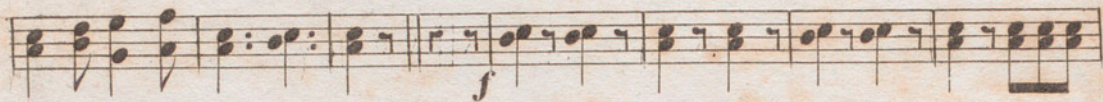
3^e et 4^e CORNS.

Par P. MUSARD.

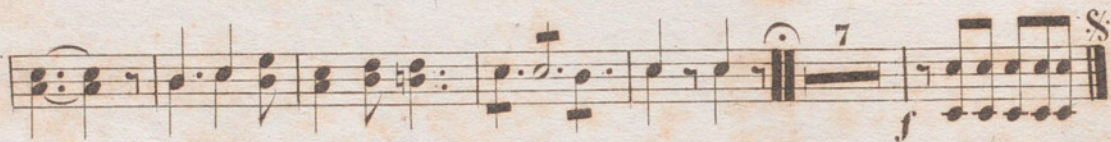
Quadrille.

En Si b. 8.

N^o 1. 



CODA. 



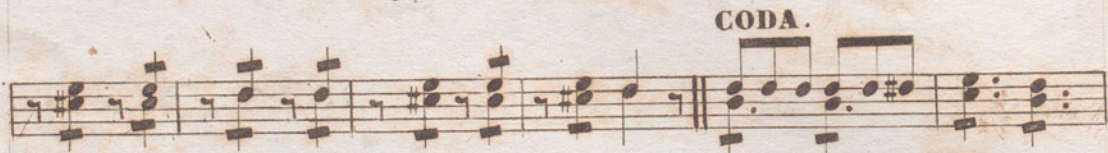
En Ré.

N^o 2. 



En Ut.

N^o 3. 

CODA. 



LE MOULIN JOLI

1^{er} CORNET à Pistons.

Par P. MUSARD.

Quadrille.

N^o 1. *en La* $\frac{6}{8}$ *S*
f

p

CODA

f

p *f* *S*

N^o 2. *en La.* $\frac{2}{4}$ *f* *f* *tr*

2^e fois.

SOLO. 1^{er} fois. *tr* 3 3

1^{ma} 2^{da} *f*

tr 3 3

N^o 3. $\frac{6}{8}$ *p*

CODA *f*

8 D.C.

LE MOULIN JOLI

2^e CORNET à Pistons.

Par P. MUSARD.

Quadrille.

N^o 1. *En La. S.*
Musical notation for the first staff of No. 1, starting with a treble clef, a key signature of one sharp (F#), and a time signature of 6/8. The first measure is marked with a forte *f* dynamic.

Musical notation for the second staff of No. 1, continuing the melody. A forte *f* dynamic is present.

CODA.

Musical notation for the third staff of No. 1, which is the coda section.

Musical notation for the fourth staff of No. 1, ending with a fermata and a forte *f* dynamic.

N^o 2. Musical notation for the first staff of No. 2, starting with a treble clef and a 2/4 time signature. It begins with a forte *f* dynamic and includes the handwritten annotation *fz Tartar*.

Musical notation for the second staff of No. 2, featuring a repeat sign and the annotation *2^e fois.*

Musical notation for the third staff of No. 2, including first and second endings marked *1^a* and *2^a*, ending with a forte *f* dynamic.

N^o 3. *En La.* Musical notation for the first staff of No. 3, starting with a treble clef, a key signature of two flats (Bb, Eb), and a time signature of 6/8. It begins with a piano *p* dynamic.

Musical notation for the second staff of No. 3, continuing the melody with a forte *f* dynamic.

CODA.

Musical notation for the third staff of No. 3, which is the coda section.

Musical notation for the fourth staff of No. 3, ending with a fermata, a forte *f* dynamic, and the instruction *D.C.*

N^o 4. ⁸ 1^{re} et 3^e fois.

2^e et 4^e fois

N^o 5. En Sib. 2^o 1^o 2^o 3^o 4^o 5^o 6^o 7^o 8^o 9^o 10^o 11^o 12^o 13^o 14^o 15^o 16^o 17^o 18^o 19^o 20^o 21^o 22^o 23^o 24^o 25^o 26^o 27^o 28^o 29^o 30^o 31^o 32^o 33^o 34^o 35^o 36^o 37^o 38^o 39^o 40^o 41^o 42^o 43^o 44^o 45^o 46^o 47^o 48^o 49^o 50^o 51^o 52^o 53^o 54^o 55^o 56^o 57^o 58^o 59^o 60^o 61^o 62^o 63^o 64^o 65^o 66^o 67^o 68^o 69^o 70^o 71^o 72^o 73^o 74^o 75^o 76^o 77^o 78^o 79^o 80^o 81^o 82^o 83^o 84^o 85^o 86^o 87^o 88^o 89^o 90^o 91^o 92^o 93^o 94^o 95^o 96^o 97^o 98^o 99^o 100^o

N^o 5. ^p 1^{re} et 3^e fois.

2^e et 4^e fois.

LE MOULIN JOLI

Quadrille

1^{er} TROMBONE.

Par P. MUSARD.

N^o 1. *f* CODA.

N^o 2. *f*

N^o 3. *f* CODA. 8 D.C.

N^o 4. *f* 1^{er} et 3^e fois. 15 6 D.C. 2^{er} et 4^e fois. *f*

N^o 5. SOLO. *1^{er} 7 0^{er} Net 5^{er}* *f* 1^{er} et 3^e fois. *f*

D.C. 2^{er} et 4^e fois. D.C.

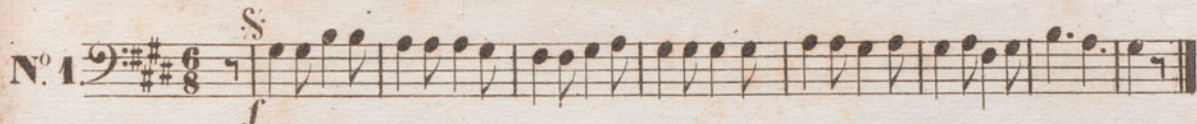
Mus

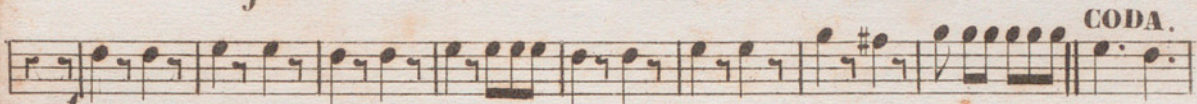
LE MOULIN JOLI

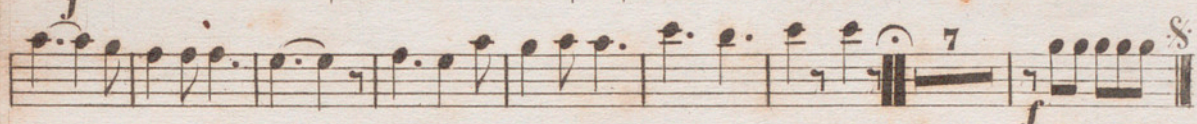
Quadrille.

2^{me} TROMBONE.

Par P. MUSARD.

N^o 1 

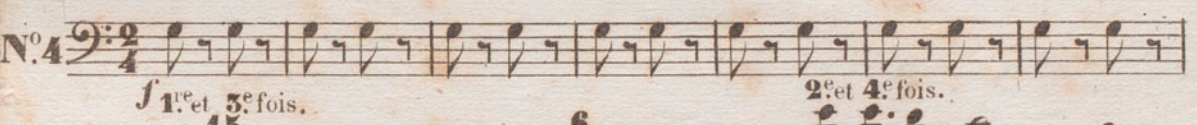




N^o 2 



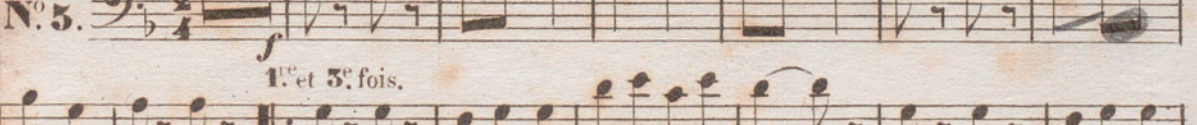


N^o 3 







N^o 4 







N^o 5 



LE MOULIN JOLI

OPHICLEÏDE

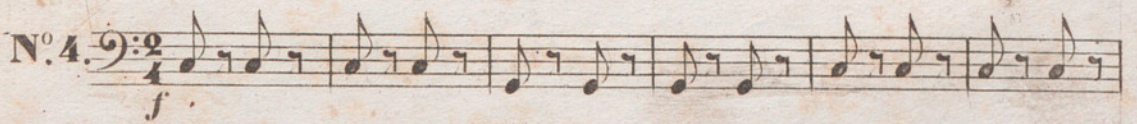
Par P. MUSARD.

Quadrille.

N° 1. 

N° 2. 

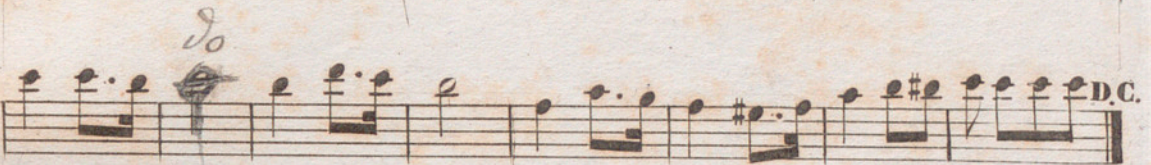
N° 3. 

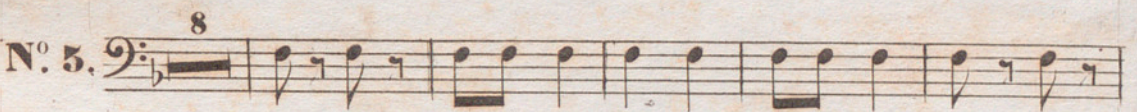
N° 4. 

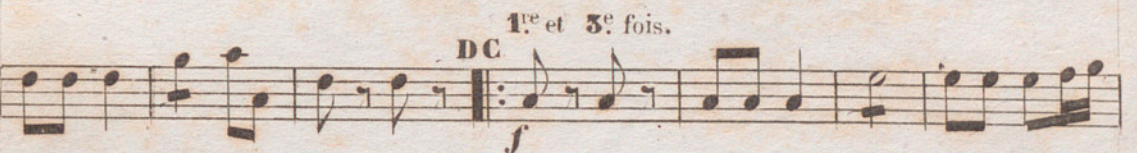
1^{re} et 3^e fois. **15** **6** **D.C.** 

2^e et 4^e fois. 





N° 5. **8** 

1^{re} et 3^e fois. **DC** **f** 

2^e et 4^e fois. **f** 





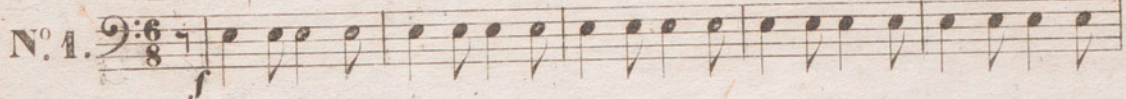
LE MOULIN JOLI

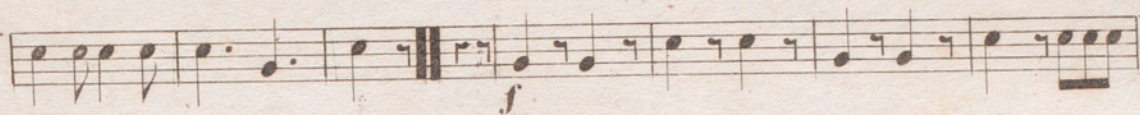
TIMBALES.

Par P. MUSARD.

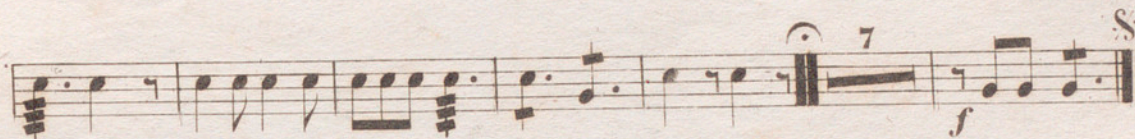
Quadrille.

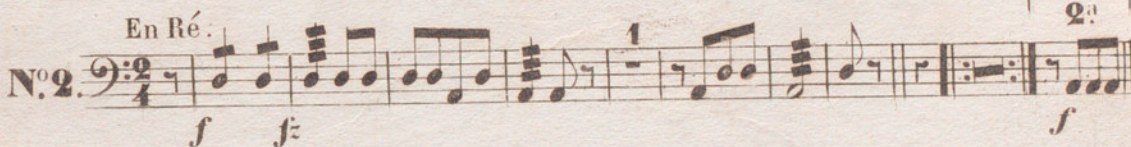
En Mi b.

N^o 1. 

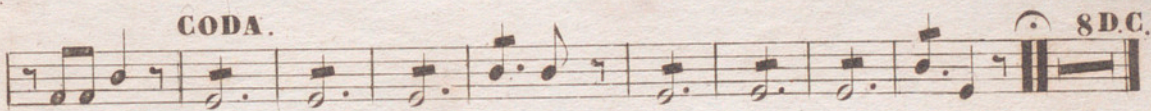


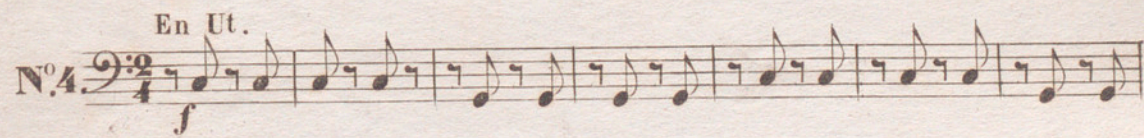
CODA. 



N^o 2. En Ré. 

N^o 3. 

CODA. 

N^o 4. En Ut. 

4^e et 5^e fois. Moulin. 



15 14 15 16 17 18

fp *fp* *fp* *fp* *fp* *fp*

19 20 21 22 23

fp *fp* *fp* *fp* *fp*

Timbales D.C.

2^e et 4^e fois.

f

En Fa.

N^o 5.

f

1^e et 3^e fois.

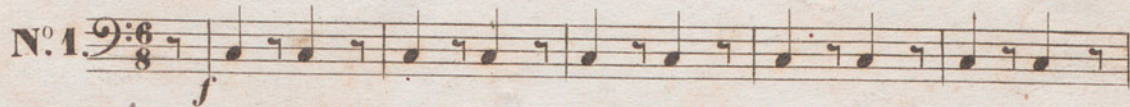
D.C. 2^e et 4^e fois.

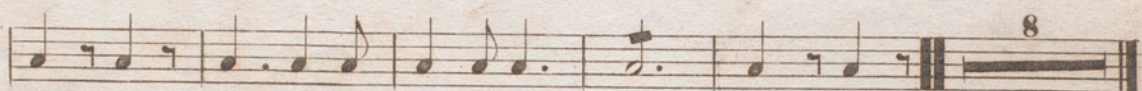
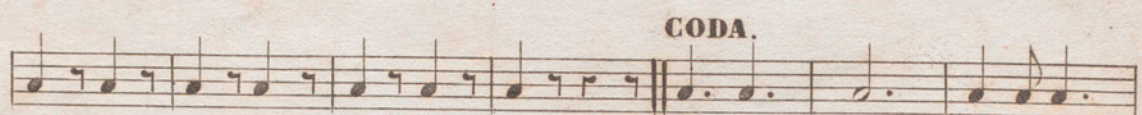
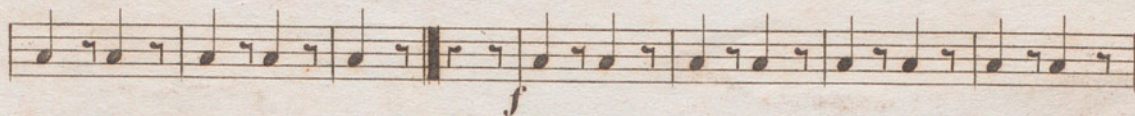
LE MOULIN JOLI

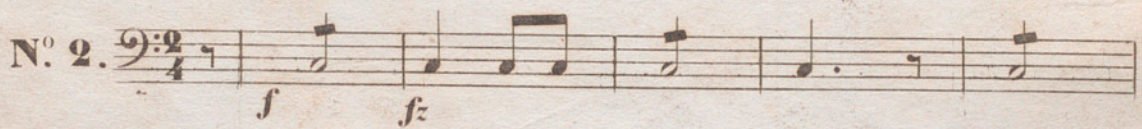
GROSSE CAISSE.

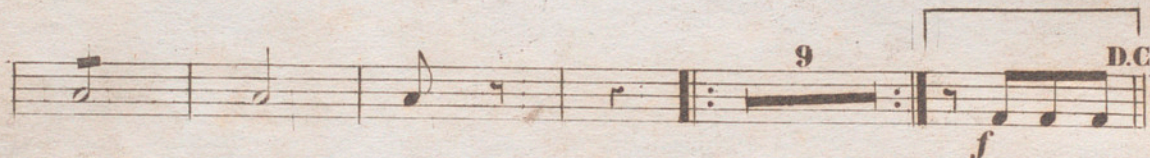
par P. MUSARD.

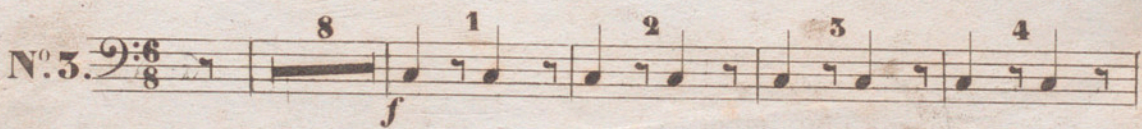
Quadrille

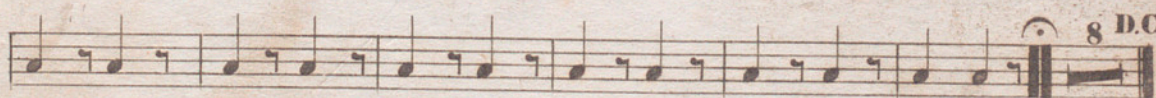
N^o 1. 



N^o 2. 



N^o 3. 



N^o 4. $\text{B}\flat: \frac{2}{4}$ *f*