

Violin 1^o.

Marraco

Sinfonia.

Gerion

M^o Carreras.

Sinfonia

Allo con brio

Andte poco mosso

1^o Tempo

Leggero.

Handwritten musical score on ten staves. The notation includes various rhythmic values, accidentals (sharps), and dynamic markings. The first staff begins with a treble clef and a key signature of two sharps (F# and C#). The second staff has the marking "a sopra" written above it. The third staff has "loco" written above it. The fourth staff has a fermata and a "2" written above it. The fifth staff has a fermata and a "14" written above it. The sixth staff has a fermata and a "pizz" (pizzicato) marking below it. The seventh staff has a fermata and a "2" written above it.

Handwritten musical score on two staves. The first staff begins with the tempo marking "And. fort." and a key signature of two sharps. It includes the markings "D arco" and "Legato" above the staff. The second staff has a fermata and a "pizz" marking below it. At the bottom of the page, there is a large, stylized signature or flourish.

Handwritten musical score on aged paper, featuring ten staves of music. The notation includes various notes, rests, and dynamic markings. The markings include:

- pp* (pianissimo) at the beginning of the first staff.
- rall* (rallentando) under the first staff.
- cres* (crescendo) under the second staff.
- riten* (ritardando) under the third staff.
- da. sopra* (da sopra) written above the fourth and fifth staves.
- loco* (loco) written above the sixth and seventh staves.

The music is written in a single system across ten staves. The notation includes various note values, rests, and slurs. The paper shows signs of age with some staining.

A handwritten musical score on ten staves. The notation includes various rhythmic values, accidentals, and dynamic markings. The score is written in a cursive, historical style. Annotations include:

- rit* (ritardando) at the beginning of the first staff.
- rit* at the beginning of the second staff.
- rit* at the beginning of the third staff.
- rit* at the beginning of the fourth staff.
- rit* at the beginning of the fifth staff.
- rit* at the beginning of the sixth staff.
- rit* at the beginning of the seventh staff.
- rit* at the beginning of the eighth staff.
- rit* at the beginning of the ninth staff.
- rit* at the beginning of the tenth staff.
- rit* at the beginning of the eleventh staff.
- rit* at the beginning of the twelfth staff.
- rit* at the beginning of the thirteenth staff.
- rit* at the beginning of the fourteenth staff.
- rit* at the beginning of the fifteenth staff.
- rit* at the beginning of the sixteenth staff.
- rit* at the beginning of the seventeenth staff.
- rit* at the beginning of the eighteenth staff.
- rit* at the beginning of the nineteenth staff.
- rit* at the beginning of the twentieth staff.
- rit* at the beginning of the twenty-first staff.
- rit* at the beginning of the twenty-second staff.
- rit* at the beginning of the twenty-third staff.
- rit* at the beginning of the twenty-fourth staff.
- rit* at the beginning of the twenty-fifth staff.
- rit* at the beginning of the twenty-sixth staff.
- rit* at the beginning of the twenty-seventh staff.
- rit* at the beginning of the twenty-eighth staff.
- rit* at the beginning of the twenty-ninth staff.
- rit* at the beginning of the thirtieth staff.
- rit* at the beginning of the thirty-first staff.
- rit* at the beginning of the thirty-second staff.
- rit* at the beginning of the thirty-third staff.
- rit* at the beginning of the thirty-fourth staff.
- rit* at the beginning of the thirty-fifth staff.
- rit* at the beginning of the thirty-sixth staff.
- rit* at the beginning of the thirty-seventh staff.
- rit* at the beginning of the thirty-eighth staff.
- rit* at the beginning of the thirty-ninth staff.
- rit* at the beginning of the fortieth staff.
- rit* at the beginning of the forty-first staff.
- rit* at the beginning of the forty-second staff.
- rit* at the beginning of the forty-third staff.
- rit* at the beginning of the forty-fourth staff.
- rit* at the beginning of the forty-fifth staff.
- rit* at the beginning of the forty-sixth staff.
- rit* at the beginning of the forty-seventh staff.
- rit* at the beginning of the forty-eighth staff.
- rit* at the beginning of the forty-ninth staff.
- rit* at the beginning of the fiftieth staff.
- rit* at the beginning of the fifty-first staff.
- rit* at the beginning of the fifty-second staff.
- rit* at the beginning of the fifty-third staff.
- rit* at the beginning of the fifty-fourth staff.
- rit* at the beginning of the fifty-fifth staff.
- rit* at the beginning of the fifty-sixth staff.
- rit* at the beginning of the fifty-seventh staff.
- rit* at the beginning of the fifty-eighth staff.
- rit* at the beginning of the fifty-ninth staff.
- rit* at the beginning of the sixtieth staff.
- rit* at the beginning of the sixty-first staff.
- rit* at the beginning of the sixty-second staff.
- rit* at the beginning of the sixty-third staff.
- rit* at the beginning of the sixty-fourth staff.
- rit* at the beginning of the sixty-fifth staff.
- rit* at the beginning of the sixty-sixth staff.
- rit* at the beginning of the sixty-seventh staff.
- rit* at the beginning of the sixty-eighth staff.
- rit* at the beginning of the sixty-ninth staff.
- rit* at the beginning of the seventieth staff.
- rit* at the beginning of the seventy-first staff.
- rit* at the beginning of the seventy-second staff.
- rit* at the beginning of the seventy-third staff.
- rit* at the beginning of the seventy-fourth staff.
- rit* at the beginning of the seventy-fifth staff.
- rit* at the beginning of the seventy-sixth staff.
- rit* at the beginning of the seventy-seventh staff.
- rit* at the beginning of the seventy-eighth staff.
- rit* at the beginning of the seventy-ninth staff.
- rit* at the beginning of the eightieth staff.
- rit* at the beginning of the eighty-first staff.
- rit* at the beginning of the eighty-second staff.
- rit* at the beginning of the eighty-third staff.
- rit* at the beginning of the eighty-fourth staff.
- rit* at the beginning of the eighty-fifth staff.
- rit* at the beginning of the eighty-sixth staff.
- rit* at the beginning of the eighty-seventh staff.
- rit* at the beginning of the eighty-eighth staff.
- rit* at the beginning of the eighty-ninth staff.
- rit* at the beginning of the ninetieth staff.
- rit* at the beginning of the hundredth staff.

Sopra

loco

rall

loco

loco

pa.

Vlolo

moivendo

Allo Brillante

ritard *à tempo*

Handwritten musical score on ten staves. The notation includes various rhythmic values, accidentals, and dynamic markings. The first staff begins with a double bar line and a fermata. The second staff is marked *a tempo*. The third staff has a double bar line and a fermata. The fourth staff has a double bar line and a fermata. The fifth staff has a double bar line and a fermata. The sixth staff has a double bar line and a fermata. The seventh staff is marked *ritar*. The eighth staff has a double bar line and a fermata. The ninth staff has a double bar line and a fermata. The tenth staff has a double bar line and a fermata.

S. P.

A handwritten musical score on ten staves. The notation includes various note values, rests, and accidentals. The score is annotated with several instances of the word "divisi" written in cursive. The first instance is on the third staff, the second on the sixth staff, and the third on the seventh staff. There are also some other markings, possibly "gan" or "gan", on the seventh and eighth staves. The paper shows signs of age, including some staining and a small tear at the bottom left corner.

Capitolo 1

Handwritten musical notation on two staves. The top staff contains a series of notes with a treble clef and a key signature of one sharp (F#). The bottom staff contains notes with a bass clef. Performance markings include *foco meno* and *foco rall.* *molto rall.*

Handwritten musical notation on two staves. The top staff begins with the tempo marking *à tempo.* The bottom staff contains notes with a treble clef. A *ppp* marking is visible.

Handwritten musical notation on two staves. The top staff contains notes with a treble clef. A *molto rall^{do}* marking is present. A large '2' is written on the left side of the staff.

Handwritten musical notation on two staves. The top staff contains notes with a treble clef. The bottom staff contains notes with a bass clef.

Handwritten musical notation on two staves. The top staff contains notes with a treble clef. The bottom staff contains notes with a bass clef.

Handwritten musical notation on two staves. The top staff contains notes with a treble clef. The bottom staff contains notes with a bass clef. The notation ends with a double bar line and a flourish.

Handwritten signature or flourish.

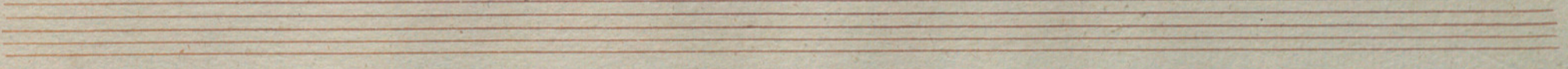
A handwritten musical score on aged paper, featuring eight staves. The notation includes various rhythmic values, accidentals, and dynamic markings. The first staff has a treble clef and a key signature of one sharp (F#). The second and third staves are marked with double bar lines at the beginning. The fourth staff begins with a piano (p) dynamic marking. The fifth staff includes a crescendo (cres) marking. The sixth and seventh staves contain rhythmic patterns with slanted stems. The eighth staff features a forte (f) dynamic marking and the instruction "tutta forza".

da alta
tutta forza.

Handwritten musical score on eight staves. The notation includes various rhythmic values, accidentals, and dynamic markings. The score is written in a cursive hand on aged paper.

Annotations and markings include:

- 1^a vez* (written above the fourth staff)
- 2^a vez* (written above the fifth staff)
- loco* (written above the fifth staff)
- allegro* (written above the sixth staff)
- al tempo* (written above the sixth staff)
- raldo* (written below the sixth staff)
- raldo* (written below the seventh staff)



Tempo

ga. alta.

divisi.

meno

loco

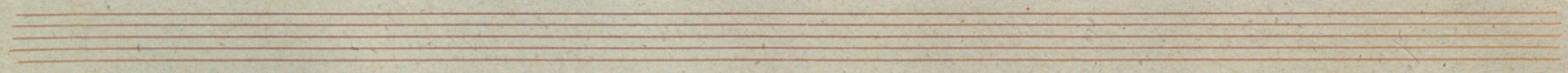
rall.

A handwritten musical score on aged, yellowed paper. The score consists of ten staves of music, each beginning with a double bar line. The notation includes various rhythmic values such as eighth and sixteenth notes, often beamed together. There are several accidentals (sharps) throughout the piece. The handwriting is in dark ink and appears to be from the 18th or 19th century. The paper shows signs of age, including some staining and foxing. The score is written in a style characteristic of historical musical manuscripts.

meno *à tempo*
rall. molto rall. tempo.
molto rall.
gr. alleg.

loco

Handwritten musical score on aged paper, featuring ten staves of music. The notation includes treble clefs, various note values, rests, and dynamic markings such as *res.* and *pp*. The score is written in a cursive style, characteristic of 18th or 19th-century manuscripts. The paper shows signs of age, including discoloration and some staining.



Handwritten musical score consisting of ten staves. The notation includes various note values, rests, and dynamic markings. The first staff begins with a treble clef and a key signature of one flat. The second staff contains a measure with a double bar line and a repeat sign. The third staff contains a measure with a double bar line and a repeat sign. The fourth staff contains a measure with a double bar line and a repeat sign. The fifth staff contains a measure with a double bar line and a repeat sign. The sixth staff contains a measure with a double bar line and a repeat sign. The seventh staff contains a measure with a double bar line and a repeat sign. The eighth staff contains a measure with a double bar line and a repeat sign. The ninth staff contains a measure with a double bar line and a repeat sign. The tenth staff contains a measure with a double bar line and a repeat sign.

1a. vez

2a. vez

su. alta.

7^a

A handwritten musical score on ten staves. The notation includes various note values (quarter, eighth, sixteenth notes), rests, and accidentals (sharps). The music is organized into measures by vertical bar lines. The first staff begins with a treble clef and a double bar line. The notation is dense and fills most of the page. The final staff ends with a whole note and a double bar line. The paper shows signs of age, including some staining and discoloration.

loco

Four empty musical staves at the bottom of the page, consisting of five-line systems without any notation.

Handwritten musical notation on four staves. The notation includes various notes, rests, and slurs. The first staff begins with a double bar line and a treble clef. The second staff contains a complex chord-like structure with multiple notes. The third staff features a long, sweeping line with several 'oo' markings below it. The fourth staff shows a large, decorative flourish.

Fin.