

Basso e Violoncello.



Sinfonia

Gerion

M^{ro} Carreras

Sinfonia

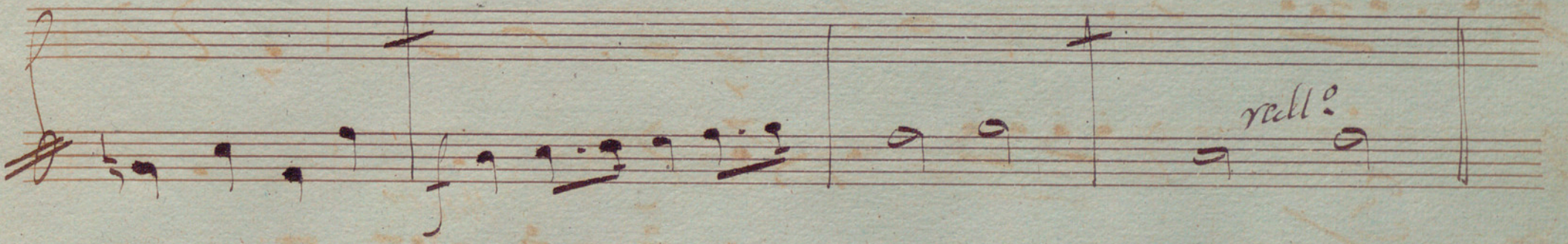
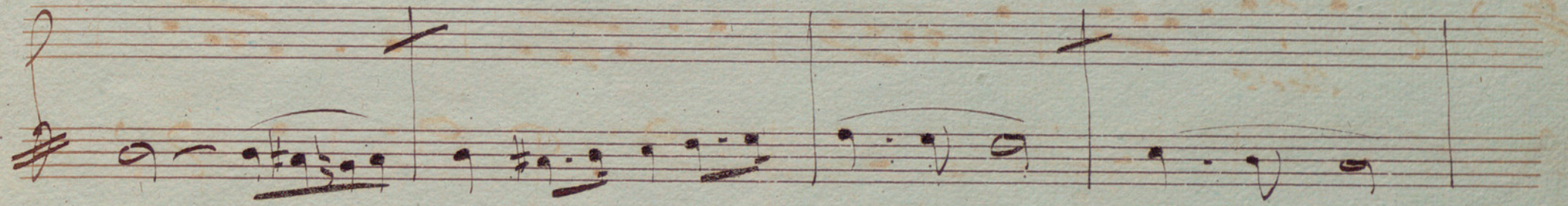
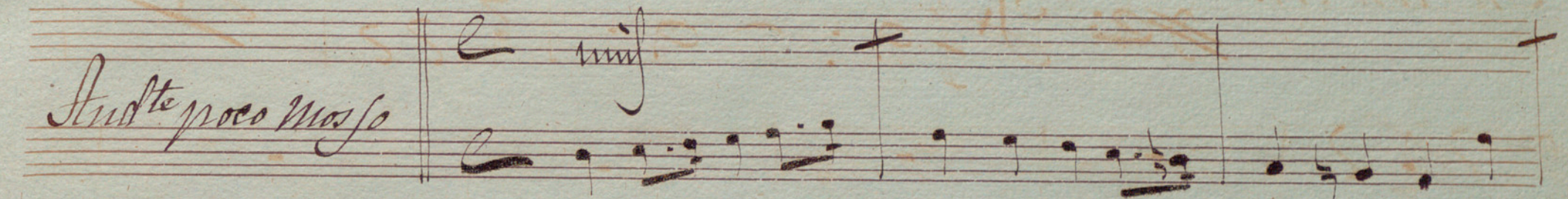
All^o con brio

Handwritten musical notation for the first system. It features a treble clef, a key signature of one flat (B-flat), and a 3/4 time signature. The notation includes a series of notes and rests, ending with a double bar line and a repeat sign.

Handwritten musical notation for the second system. It features a bass clef and the instruction "Poco". The notation includes a series of notes and rests.

Handwritten musical notation for the third system. It features a bass clef and the instruction "a tempo". The notation includes a series of notes and rests.

Handwritten musical notation for the fourth system. It features a bass clef, a 3/4 time signature, and the instruction "Poco". The notation includes a series of notes and rests.

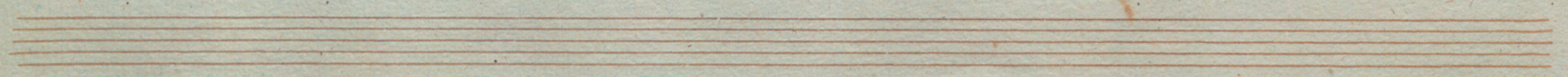


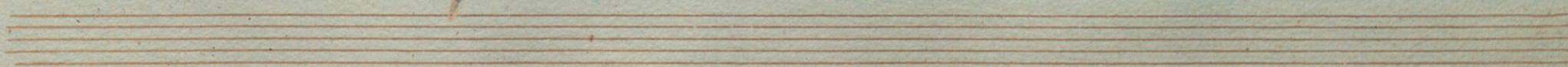
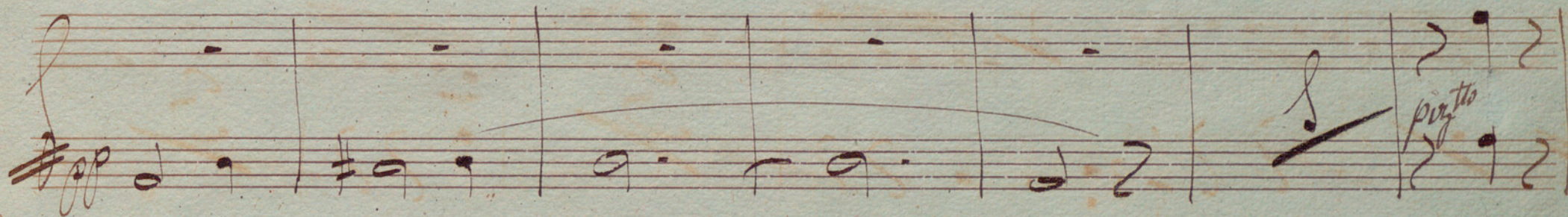
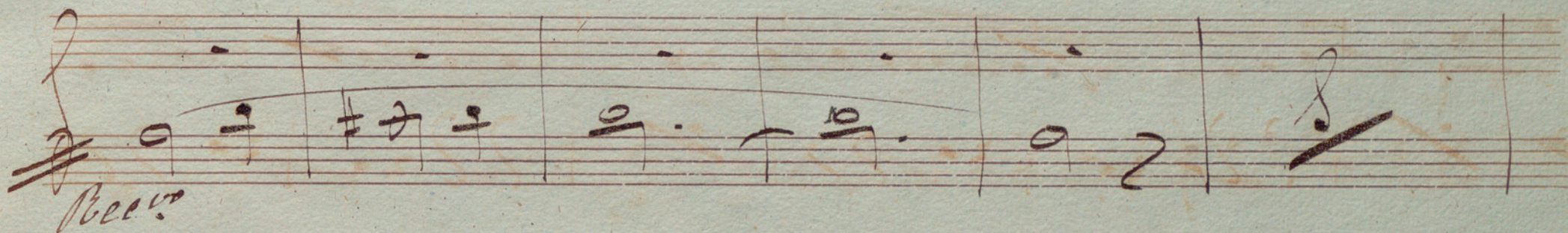
Handwritten musical notation on a five-line staff. It begins with a treble clef, a key signature of two flats (B-flat and E-flat), and a 3/4 time signature. The notation includes a series of notes and rests, with some notes beamed together. There are vertical bar lines and a fermata-like symbol above the first measure.

Handwritten musical notation on a five-line staff, continuing the piece. It features a series of notes and rests, with some notes beamed together. Vertical bar lines are present throughout the staff.

Handwritten musical notation on a five-line staff. This section includes a triplet of notes, indicated by a '3' written above the notes and a diagonal slash. The notation continues with more notes and rests.

Handwritten musical notation on a five-line staff. It features a series of notes and rests. The word *dim* is written above the first few notes, and *pp* is written above the final notes. Vertical bar lines are present throughout the staff.





And. Sost.

The first system of the manuscript features two staves. The upper staff is in treble clef and the lower in bass clef. The key signature consists of two sharps (F# and C#), and the time signature is 9/8. The music begins with a whole note chord in the treble staff, followed by a series of eighth notes. The bass staff contains rests for the first two measures, then a single eighth note in the third measure.

The second system consists of two staves. The upper staff contains a complex melodic line with many beamed eighth notes and some sixteenth notes. The lower staff features a rhythmic accompaniment with eighth notes and rests.

The third system consists of two staves. The upper staff continues the complex melodic line with beamed eighth notes. The lower staff has a rhythmic accompaniment with eighth notes and rests.

The fourth system consists of two staves. The upper staff continues the complex melodic line with beamed eighth notes. The lower staff has a rhythmic accompaniment with eighth notes and rests.

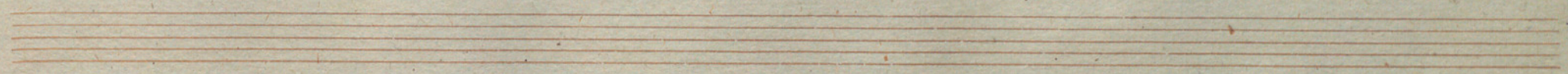
At the bottom of the page, there are three empty musical staves, indicating the end of the written music on this page.

Handwritten musical notation on two staves. The upper staff contains a melodic line with slurs and accents. The lower staff contains a bass line. The word *eres* is written in the space between the staves.

Handwritten musical notation on two staves. The upper staff contains a melodic line with slurs and accents. The lower staff contains a bass line. The word *een* is written in the space between the staves. The word *do* is written below the lower staff. The word *rall.* is written in the space between the staves.

Handwritten musical notation on two staves. The upper staff contains a melodic line with slurs and accents. The lower staff contains a bass line. The word *nie* is written in the space between the staves.

Handwritten musical notation on two staves. The upper staff contains a melodic line with slurs and accents. The lower staff contains a bass line. The word *ritar* is written in the space between the staves.



pppp

ritar

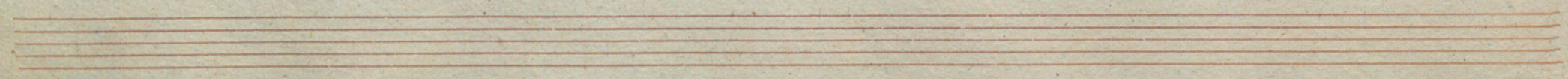
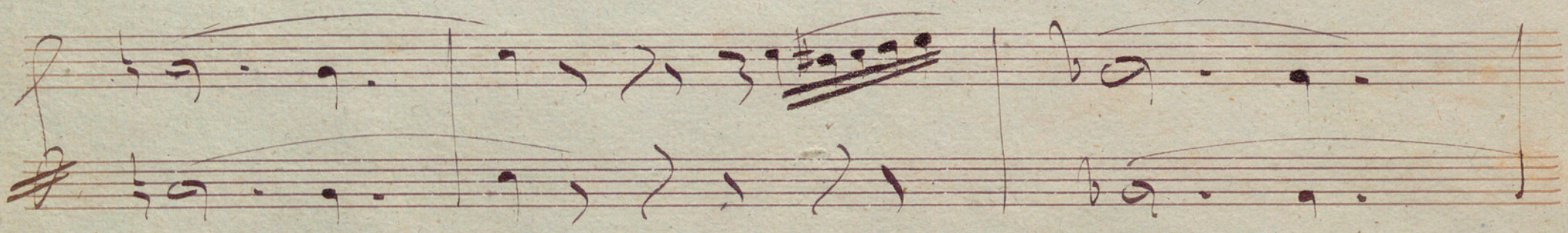
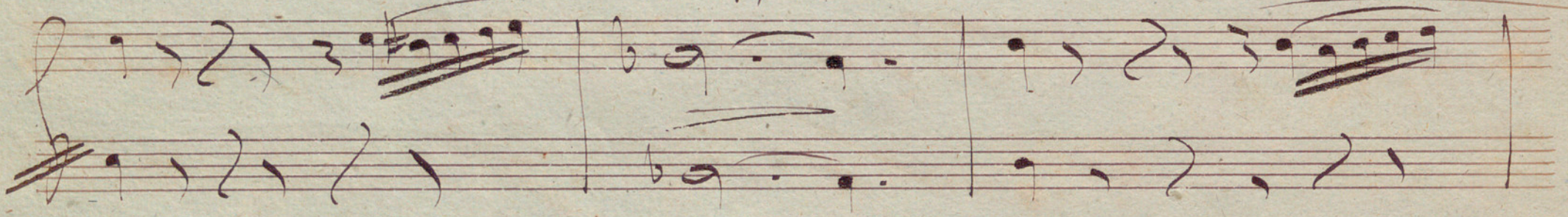
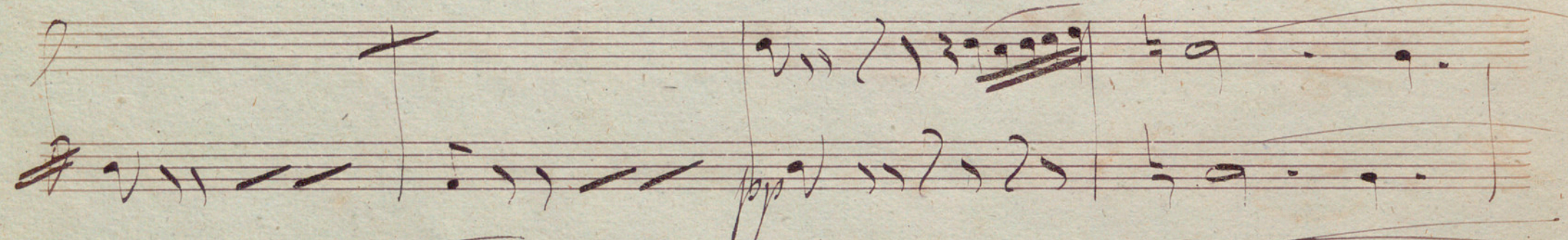
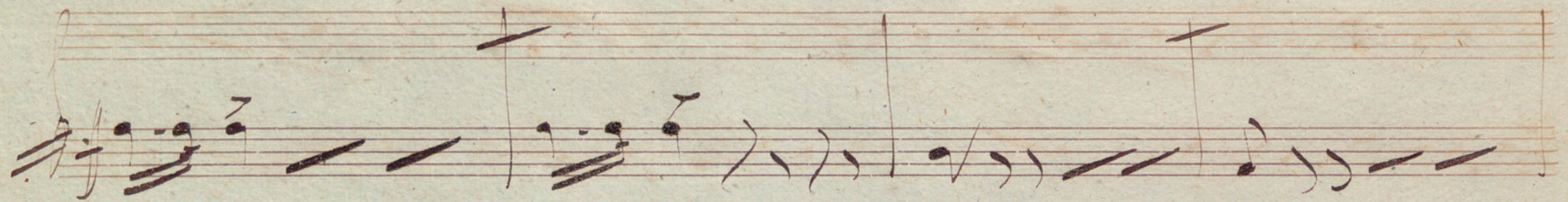
Handwritten musical notation for the first system, featuring two staves with treble clefs and a common time signature. The top staff contains a melodic line with slurs and a fermata. The bottom staff contains a rhythmic accompaniment. The word "rall." is written in the second measure of both staves.

Handwritten musical notation for the second system, featuring two staves with treble clefs and a common time signature. The top staff continues the melodic line with a fermata. The bottom staff continues the rhythmic accompaniment. The word "pp" is written in the third measure of the top staff.

Handwritten musical notation for the third system, featuring two staves with treble clefs and a common time signature. The top staff contains a melodic line with a fermata. The bottom staff contains a rhythmic accompaniment with a fermata.

Handwritten musical notation for the fourth system, featuring a single staff with a treble clef and a common time signature. The staff contains a melodic line with slurs and a fermata. The word "pp" is written at the end of the staff.

Two empty musical staves at the bottom of the page.



molendo

All.^o Brillante

Handwritten musical notation on a five-line staff. The key signature is one sharp (F#) and the time signature is 3/4. The notation includes a treble clef, a repeat sign, and dynamic markings: *ritar* and *a temp*. The notes are mostly eighth and sixteenth notes.

Handwritten musical notation on a five-line staff. The key signature is one sharp (F#) and the time signature is 3/4. The notation includes a treble clef, a repeat sign, and a fermata over a note. The notes are mostly eighth and sixteenth notes.

Handwritten musical notation on a five-line staff. The key signature is one sharp (F#) and the time signature is 3/4. The notation includes a treble clef, a repeat sign, and dynamic markings: *ritar* and *a temp*. The notes are mostly eighth and sixteenth notes.

Handwritten musical notation on a five-line staff. The key signature is one sharp (F#) and the time signature is 3/4. The notation includes a treble clef, a repeat sign, and a fermata over a note. The notes are mostly eighth and sixteenth notes.

Two empty five-line musical staves at the bottom of the page.

temp

ritar *temp*

forza

A handwritten musical score on aged, yellowed paper. The score consists of ten staves of music, arranged in five pairs. Each pair of staves is connected by a brace on the left. The notation is in dark ink and includes various musical symbols such as notes, rests, beams, and slurs. A dynamic marking 'mf' is visible on the second staff. The paper shows signs of age, including foxing and some staining. At the bottom of the page, there are three empty staves.

Handwritten musical notation on two staves. The upper staff is in treble clef and contains several measures of music, including a complex chordal passage with many beamed notes. The lower staff is in bass clef and contains rhythmic notation, including slanted lines and curved marks.

Handwritten musical notation on two staves. The upper staff is in treble clef and contains several measures of music, including a complex chordal passage with many beamed notes. The lower staff is in bass clef and contains rhythmic notation, including slanted lines and curved marks.

Handwritten musical notation on two staves. The upper staff is in treble clef and contains several measures of music, including a complex chordal passage with many beamed notes. The lower staff is in bass clef and contains rhythmic notation, including slanted lines and curved marks.

Handwritten musical notation on two staves. The upper staff is in treble clef and contains several measures of music, including a complex chordal passage with many beamed notes. The lower staff is in bass clef and contains rhythmic notation, including slanted lines and curved marks.

Two empty musical staves at the bottom of the page.

Handwritten musical notation on a single staff. The notation includes a treble clef, a key signature of one sharp (F#), and a common time signature (C). The music consists of several measures with various note values and rests. Above the staff, there are markings: *rall.* and *poco meno*.

Handwritten musical notation on a single staff. The notation includes a treble clef and a common time signature (C). The music consists of several measures with various note values and rests. Above the staff, there are markings: *rall.* and *molto rall.*

Handwritten musical notation on a single staff. The notation includes a treble clef and a common time signature (C). The music consists of several measures with various note values and rests. Above the staff, there are markings: *a tempo* and *rall.*

Handwritten musical notation on two staves. The top staff has a treble clef and a key signature of one sharp (F#). The bottom staff has a bass clef and a key signature of one sharp (F#). The music consists of several measures with various note values and rests, including a large slur over the top staff.

rall.

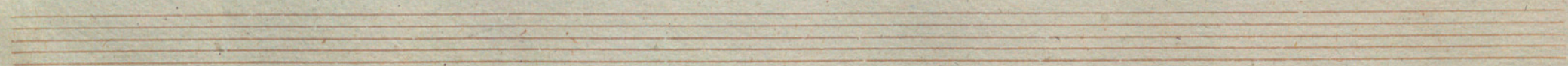
ff

Handwritten musical notation on a five-line staff. The top line features a long, sweeping melodic line with several notes, including a prominent one with a sharp sign. Below this, a series of rhythmic markings and notes are written across the staff.

Handwritten musical notation on a five-line staff. The top line contains several notes, some with sharp signs, and a series of rhythmic markings. Below this, a series of rhythmic markings and notes are written across the staff.

Handwritten musical notation on a five-line staff. The top line contains several notes, some with sharp signs, and a series of rhythmic markings. Below this, a series of rhythmic markings and notes are written across the staff. The word "Cres" is written in the lower right portion of the staff.

Handwritten musical notation on a five-line staff. The top line contains several notes, some with sharp signs, and a series of rhythmic markings. Below this, a series of rhythmic markings and notes are written across the staff.



Handwritten musical notation on a five-line staff. The first three measures contain notes with stems and beams. The fourth measure is heavily scribbled out with diagonal lines.

Handwritten musical notation on a five-line staff. The first three measures contain notes with stems and beams. The fourth measure is heavily scribbled out with diagonal lines.

Handwritten musical notation on a five-line staff. The first three measures contain notes with stems and beams. The fourth measure contains the handwritten text *tutti forza.* written over the staff lines.

S.S.

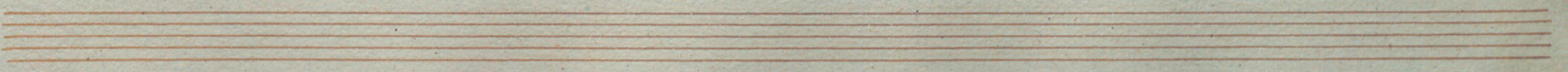
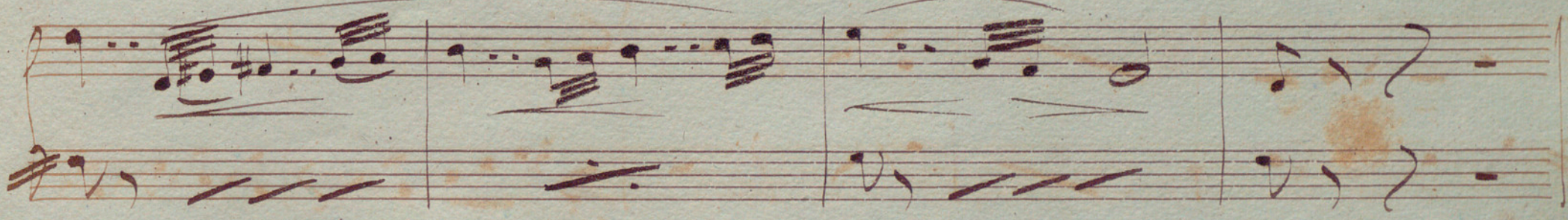
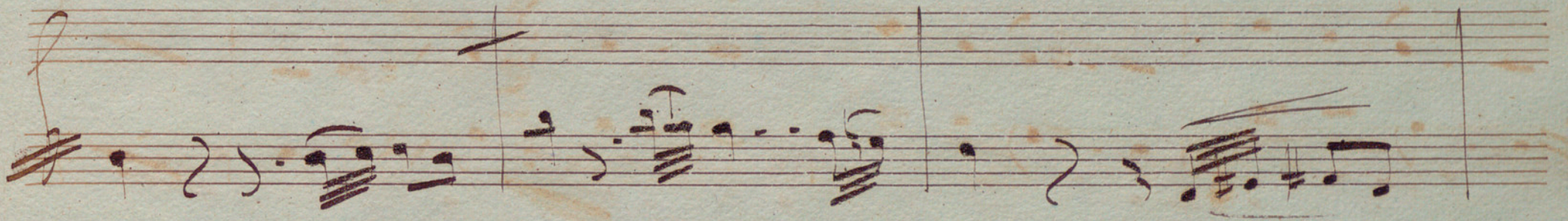
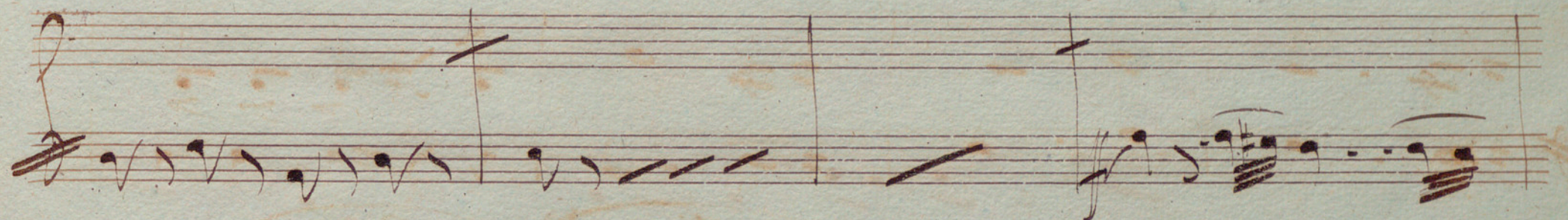
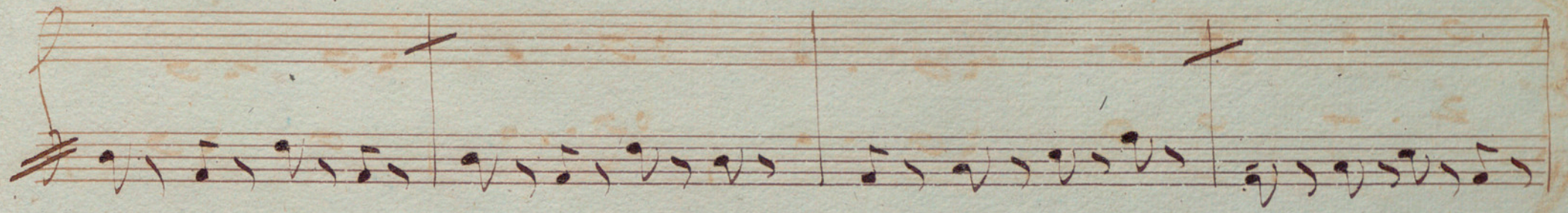
Handwritten musical notation on a grand staff with treble and bass clefs. The music consists of several measures with various note values and rests.

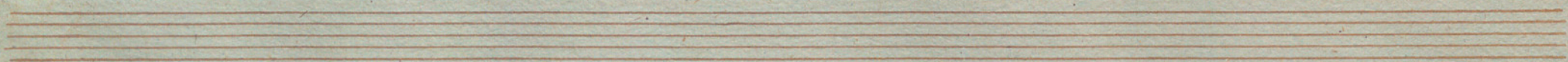
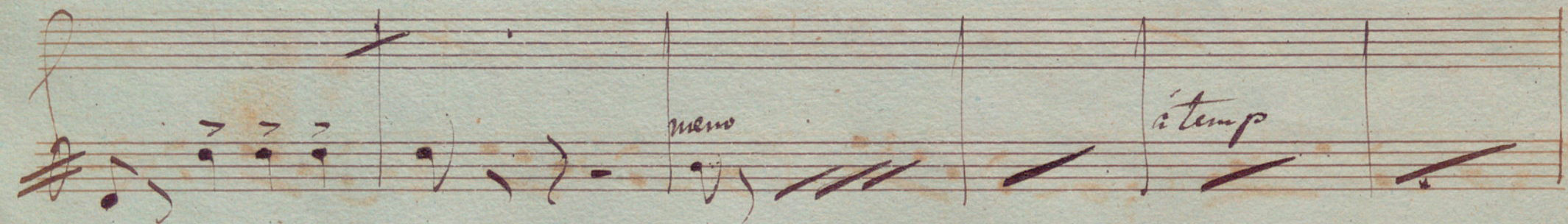
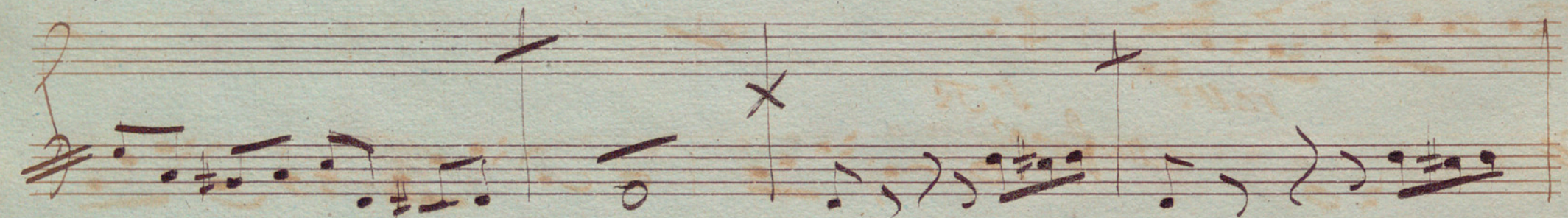
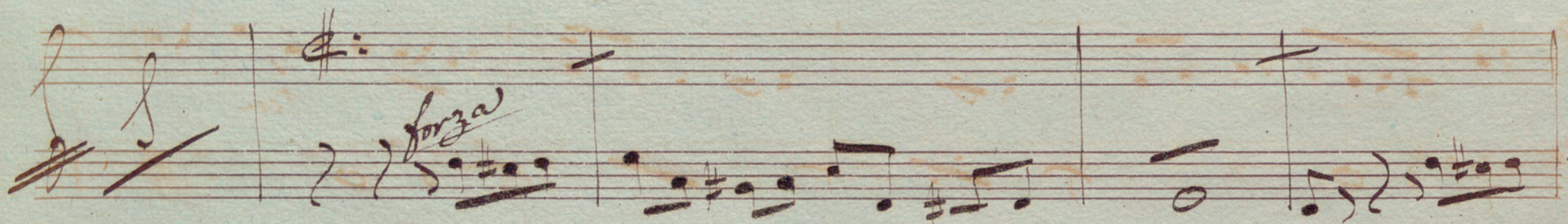
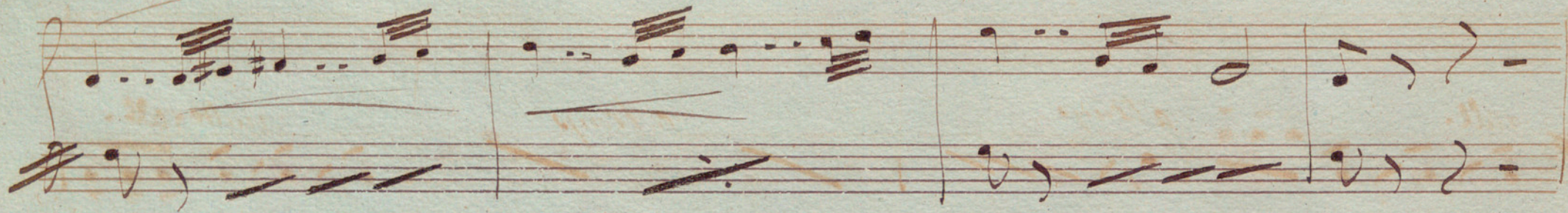
Handwritten musical notation on a grand staff with treble and bass clefs. The music consists of several measures with various note values and rests.

Handwritten musical notation on a grand staff with treble and bass clefs. The music consists of several measures with various note values and rests. Includes the annotation "1. vez" above a slur.

Handwritten musical notation on a grand staff with treble and bass clefs. The music consists of several measures with various note values and rests. Includes the annotation "2. vez" above a slur.

Handwritten musical notation on a grand staff with treble and bass clefs. The music consists of several measures with various note values and rests. Includes the annotations "pizz" and "arco" below the staff.





rall. *a temp* *a temp* *molto rall.*

rall. *so Jo*

pp

Handwritten musical notation on a five-line staff. The notation includes a treble clef, a key signature of one sharp (F#), and a common time signature (C). The first measure contains a series of eighth notes. The second measure features a half note followed by a quarter rest. The third measure contains eighth notes with a fermata over the final note. The staff ends with a double bar line.

Handwritten musical notation on a five-line staff. The notation includes a treble clef, a key signature of one sharp (F#), and a common time signature (C). The first measure contains eighth notes with a fermata over the final note. The second measure features a half note followed by a quarter rest. The third measure contains eighth notes with a fermata over the final note. The staff ends with a double bar line.

Handwritten musical notation on a five-line staff. The notation includes a treble clef, a key signature of one sharp (F#), and a common time signature (C). The first measure contains eighth notes with a fermata over the final note. The second measure features a half note followed by a quarter rest. The third measure contains eighth notes with a fermata over the final note. The staff ends with a double bar line.

Handwritten musical notation on a five-line staff. The notation includes a treble clef, a key signature of one sharp (F#), and a common time signature (C). The first measure contains eighth notes with a fermata over the final note. The second measure features a half note followed by a quarter rest. The third measure contains eighth notes with a fermata over the final note. The staff ends with a double bar line.

Four empty musical staves at the bottom of the page, consisting of five lines each.

Handwritten musical notation on a five-line staff. The top staff contains a melodic line with notes, rests, and slurs. The bottom staff contains a bass line with a single slash indicating a rest.

Handwritten musical notation on a five-line staff. The top staff contains a melodic line with notes, rests, and slurs. The bottom staff contains a bass line with a single slash indicating a rest.

Handwritten musical notation on a five-line staff. The top staff contains a melodic line with notes, rests, and slurs. The bottom staff contains a bass line with a slash and the word "cres" written below it.

Handwritten musical notation on a five-line staff. The top staff contains a melodic line with notes, rests, and slurs. The bottom staff contains a bass line with a single slash indicating a rest.

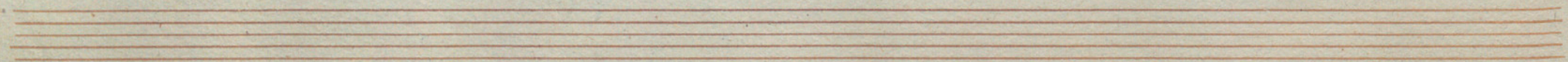
Handwritten signature or initials in the bottom right corner of the page.

Handwritten musical notation on two staves. The top staff begins with a treble clef and a key signature of one sharp (F#). The bottom staff begins with an alto clef. The notation includes various note values, rests, and dynamic markings such as *ff* and *ffz*.

Handwritten musical notation on a single staff with an alto clef. The notation consists of a series of notes with stems, including some with sharp signs (#).

Handwritten musical notation on a single staff with a treble clef. The notation includes notes with stems and a large slur covering the final portion of the staff, with the handwritten text *1^a vez* written above it.

Handwritten musical notation on a single staff with a treble clef. The notation features a series of notes with stems and accents, with a slur and the handwritten text *2^a* written above the first few notes.



Handwritten musical notation on a five-line staff. It begins with a treble clef and a sharp sign (F#). The notation consists of several notes with stems and beams, and some notes have a 'v' above them. Vertical bar lines divide the staff into measures.

Handwritten musical notation on a five-line staff. It begins with a treble clef and a sharp sign (F#). The notation consists of several notes with stems and beams, and some notes have a 'v' above them. Vertical bar lines divide the staff into measures.

Handwritten musical notation on a five-line staff. It begins with a treble clef and a sharp sign (F#). The notation consists of several notes with stems and beams, and some notes have a 'v' above them. Vertical bar lines divide the staff into measures.

Handwritten musical notation on a five-line staff. It begins with a treble clef and a sharp sign (F#). The notation consists of several notes with stems and beams, and some notes have a 'v' above them. Vertical bar lines divide the staff into measures. The notation ends with a double bar line and a repeat sign.

Two empty five-line musical staves at the bottom of the page.

