

Marta



Sinfonia

Gerion

M^{tro} Carreras

Sinfonia

All. con brio

da sempre

Handwritten musical notation on a single staff, including a treble clef, a key signature of one flat (B-flat), and a 3/4 time signature. The notation consists of a few notes and rests.

Handwritten musical notation on a single staff, featuring a series of eighth notes with stems pointing downwards.

Handwritten musical notation on a single staff, featuring a series of eighth notes with stems pointing downwards.

Handwritten musical notation on a single staff, including the instruction *a tempo* and a treble clef. The notation shows a few notes and rests.

Handwritten musical notation on a single staff, including a treble clef and a few notes with stems pointing downwards.

Handwritten musical notation on a single staff, including the instruction *And. poco mosso.* and a treble clef. The notation shows a few notes and rests.

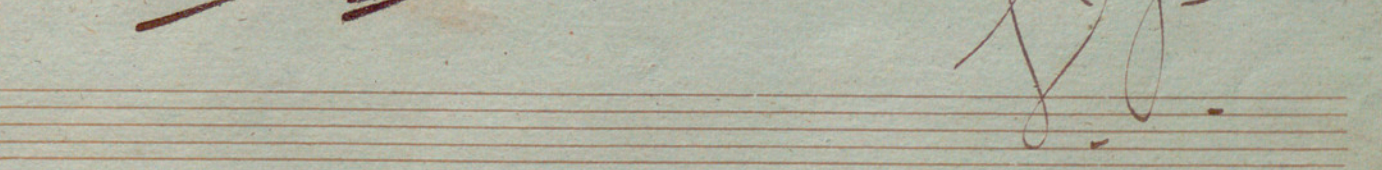
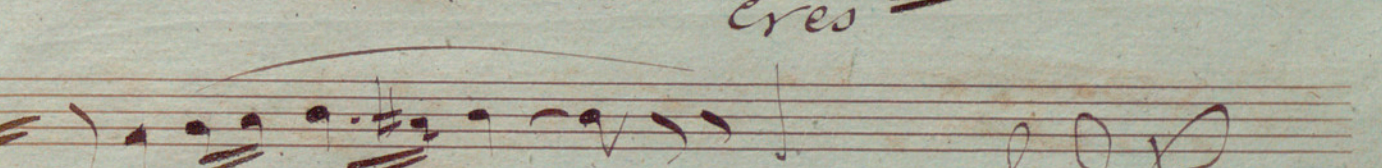
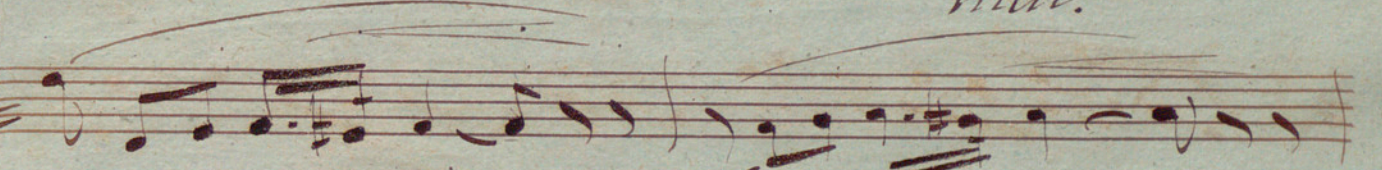
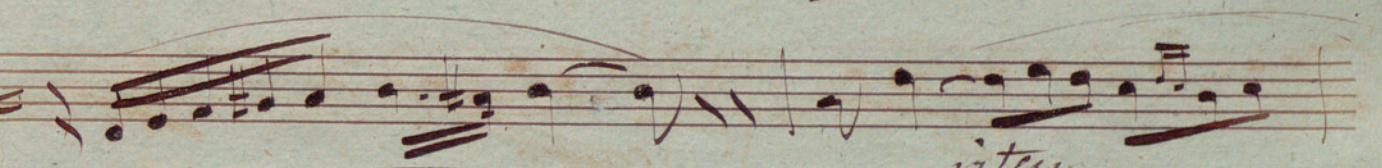
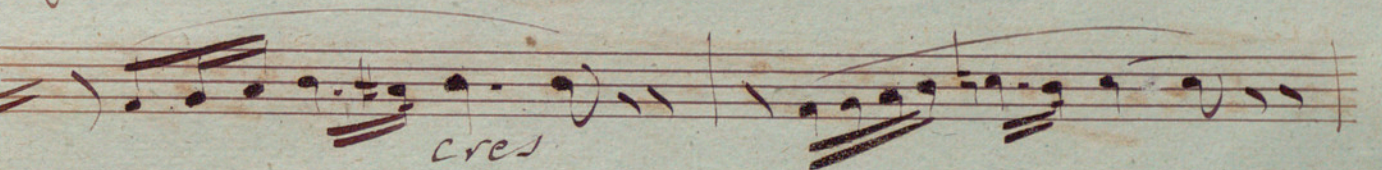
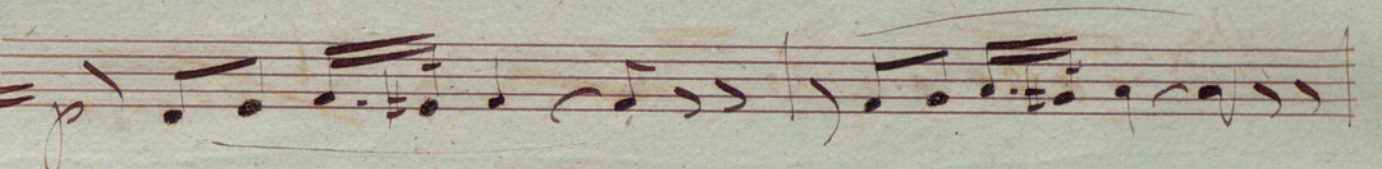
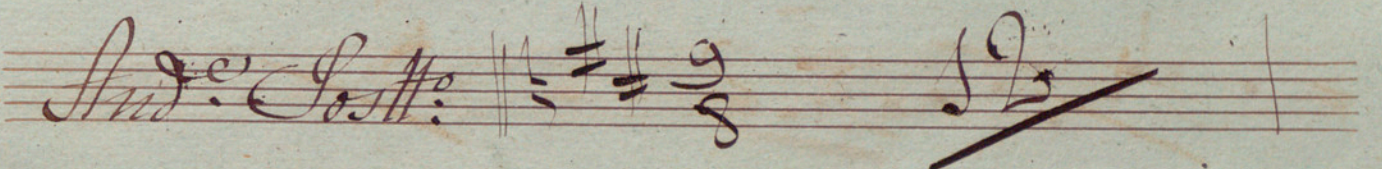
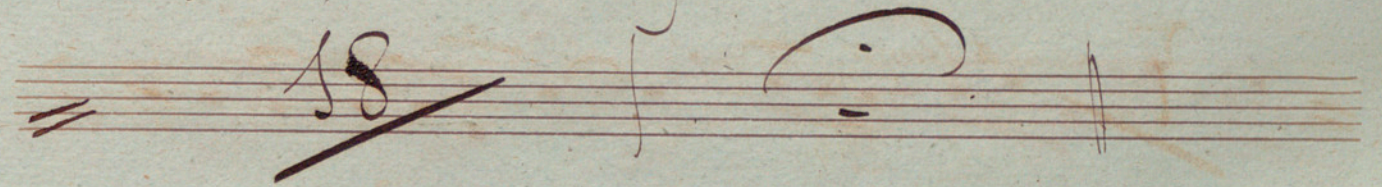
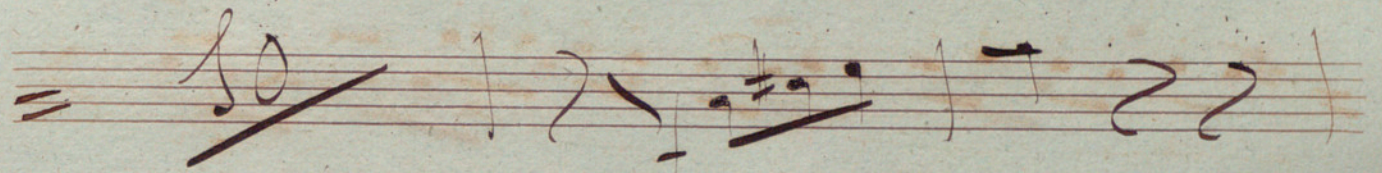
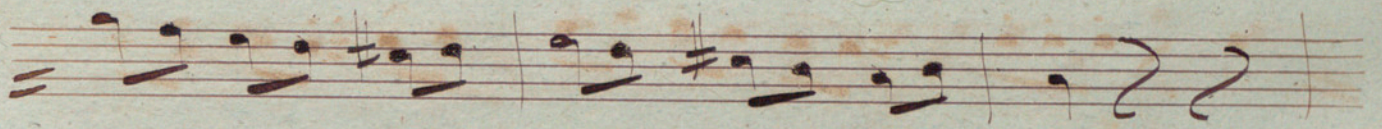
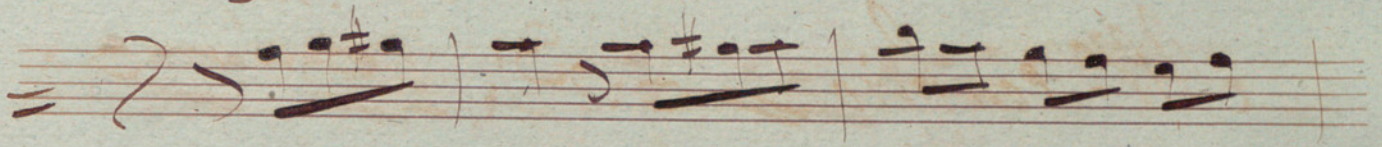
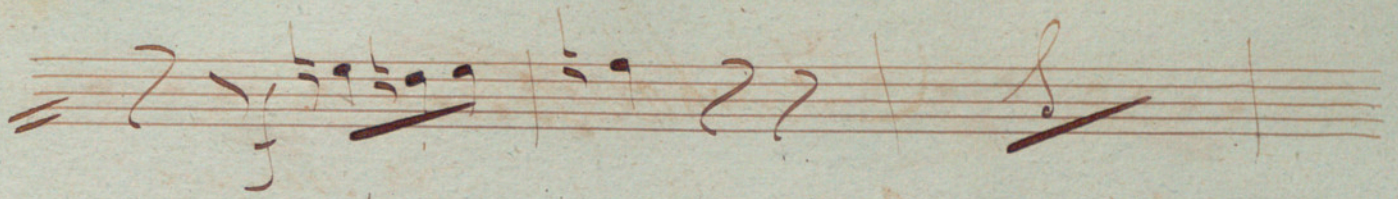
Handwritten musical notation on a single staff, including the instruction *cres* and a treble clef. The notation shows a series of notes with stems pointing downwards.

Handwritten musical notation on a single staff, including the instruction *vall.* and *1.º tempo*, and a treble clef. The notation shows a series of notes with stems pointing downwards.

Handwritten musical notation on a single staff, including a treble clef and a few notes with stems pointing downwards.

Handwritten musical notation on a single staff, including a treble clef and a few notes with stems pointing downwards.

Handwritten musical notation on a single staff, including a treble clef and a few notes with stems pointing downwards.



10

18

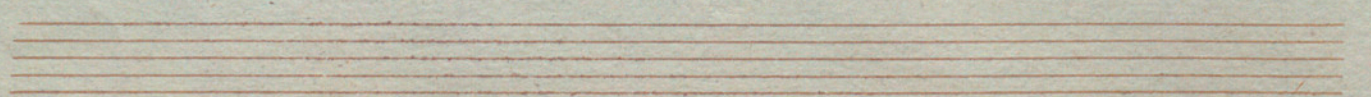
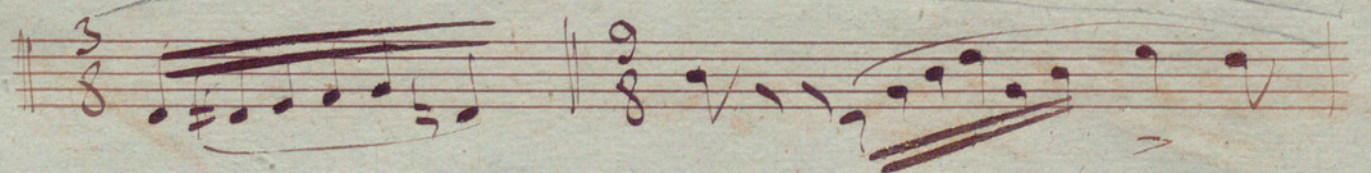
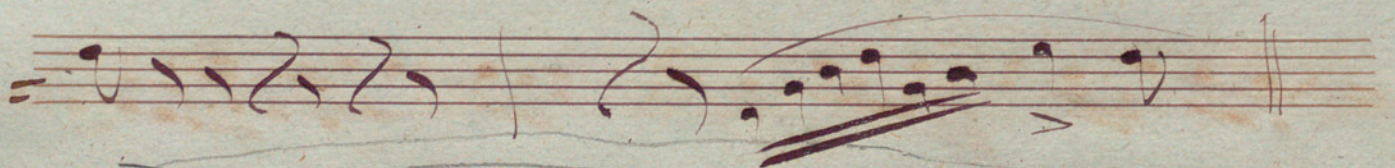
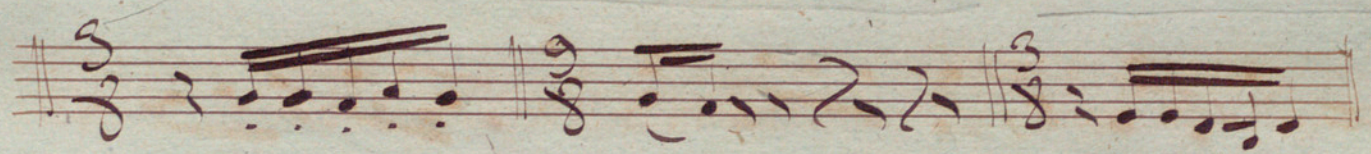
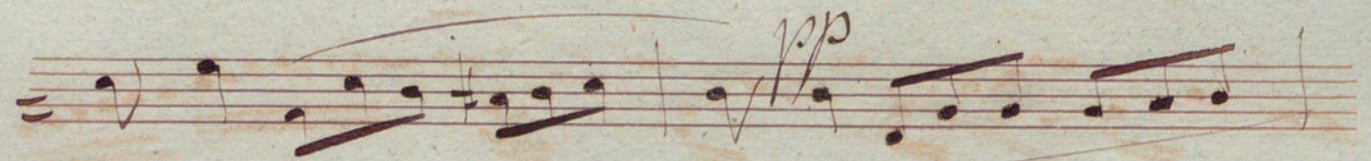
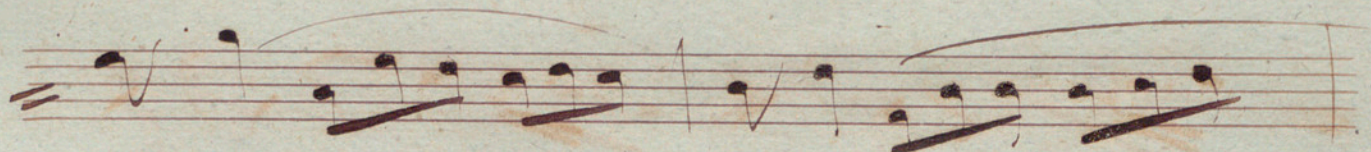
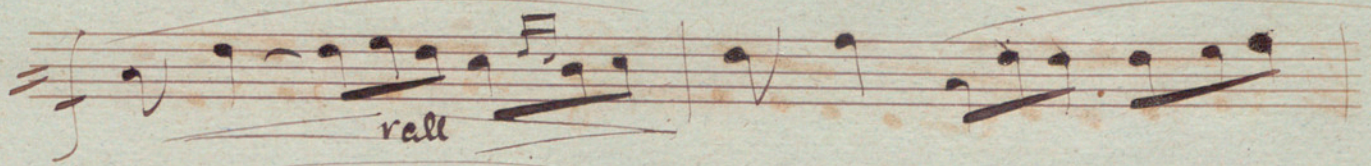
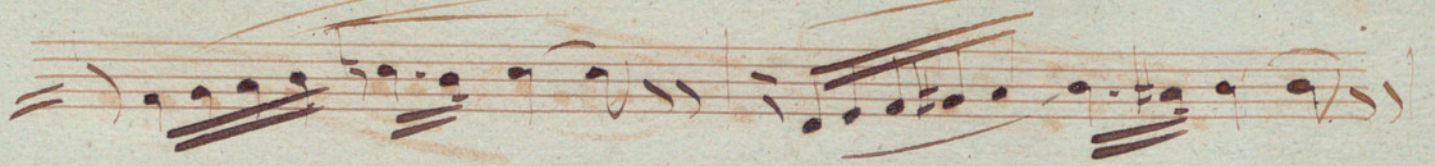
19

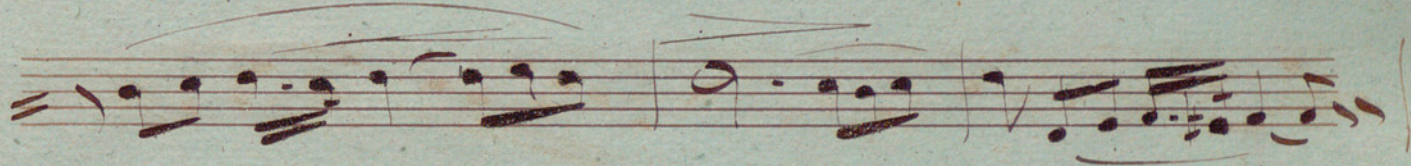
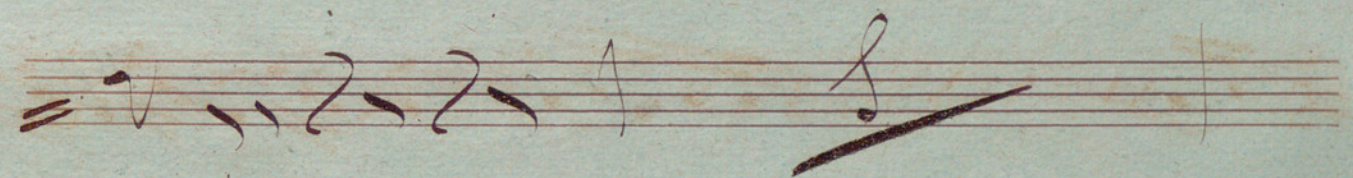
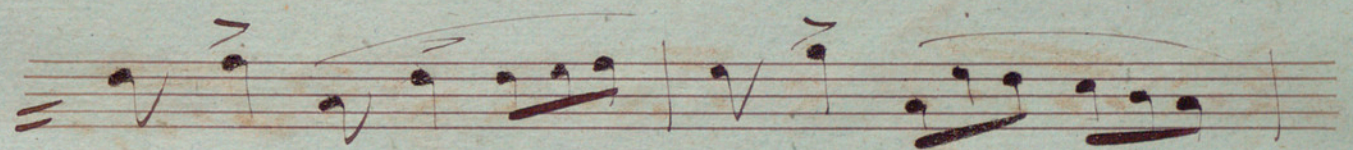
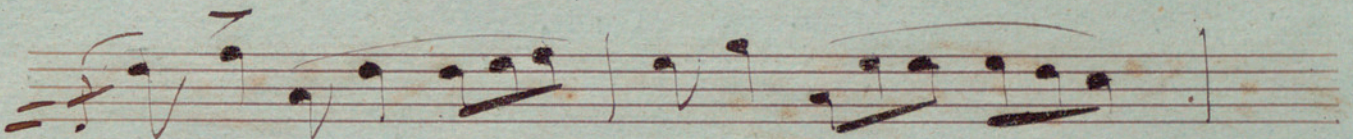
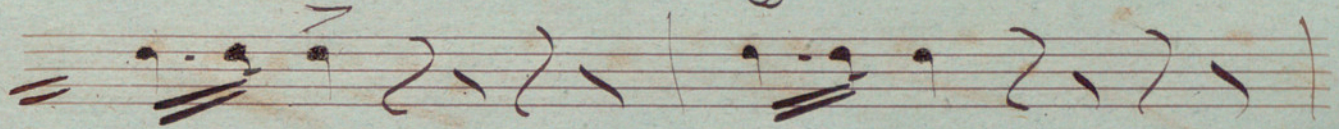
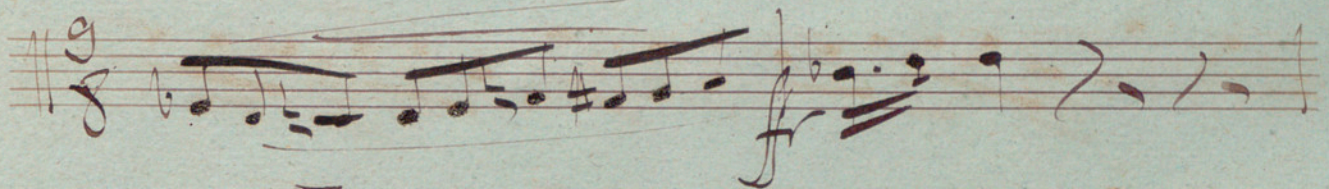
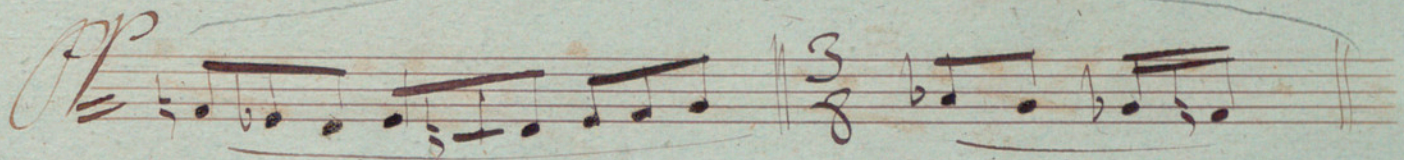
And. Post.

cres

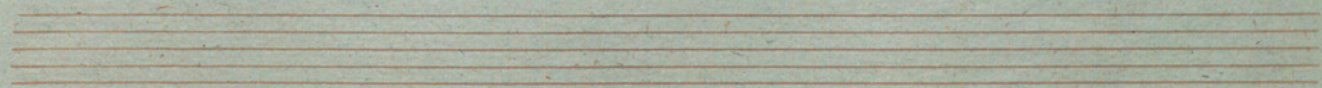
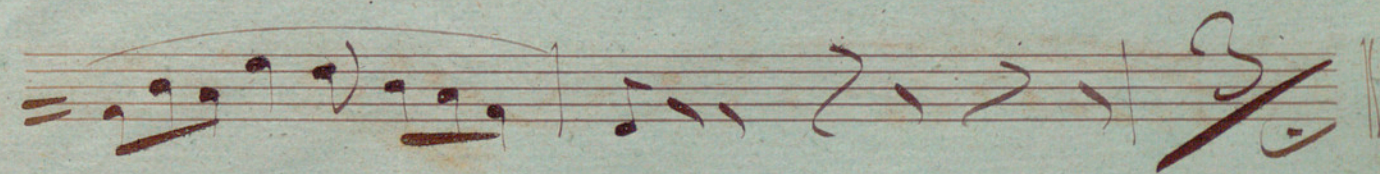
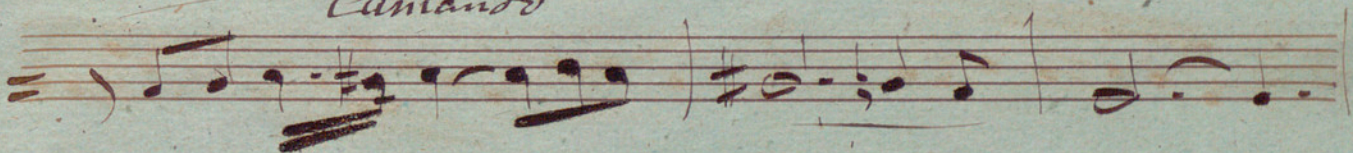
riten.

cres





Canlando



All.^o Brill.^o = e *S.C.*

19

10

1a. vez *2a.*

mf

forza

Handwritten musical score on ten staves. The notation includes various note values, rests, and dynamic markings. The first staff begins with a treble clef, a key signature of one sharp (F#), and a 7/8 time signature. The music is written in a cursive, historical style. The second staff contains a measure with a fermata over a note. The third staff has a measure with a fermata over a note. The fourth staff has a measure with a fermata over a note. The fifth staff has a measure with a fermata over a note. The sixth staff has a measure with a fermata over a note. The seventh staff has a measure with a fermata over a note. The eighth staff has a measure with a fermata over a note. The ninth staff has a measure with a fermata over a note. The tenth staff has a measure with a fermata over a note.

19

creo

forza

A page of handwritten musical notation on ten staves. The notation is in brown ink on aged, yellowish paper. The first five staves contain dense musical notation with many beamed notes and slurs. The sixth staff has a slur over it with the word "sever" written above. The seventh staff has a slur over it with "2a" written above. The eighth staff has a large diagonal slash with "50" written above it. The ninth staff has a diagonal slash with a small note above it. The tenth staff is mostly empty, with a large, decorative flourish or signature at the end.

Handwritten musical notation on a five-line staff.

Handwritten musical notation on a five-line staff.

Handwritten musical notation on a five-line staff, including a fermata.

Handwritten musical notation on a five-line staff.

Handwritten musical notation on a five-line staff.

Handwritten musical notation on a five-line staff.

Handwritten musical notation on a five-line staff.

Meno *rall.*
Handwritten musical notation on a five-line staff.

Tempo
Handwritten musical notation on a five-line staff.

rall. *molto rall.* *Tempo*
Handwritten musical notation on a five-line staff.

Handwritten musical notation on a five-line staff.

Empty musical staves at the bottom of the page.

rall.

A page of handwritten musical notation on ten staves. The notation is in brown ink on aged, yellowish paper. The first seven staves contain complex, dense musical passages with many beamed notes and slurs. The eighth staff begins with the handwritten instruction *sever* above a large, ornate clef-like symbol. The final three staves (ninth, tenth, and eleventh) contain simpler, more rhythmic notation with fewer notes and some slurs. The bottom of the page shows three empty staves.

Handwritten musical score on aged paper, consisting of ten staves. The notation includes various note values, rests, and bar lines. The first staff begins with a treble clef and a common time signature (C). The second staff contains the word "No" written above the notes. The notation is dense and includes many slurs and ties. The final staff contains the handwritten initials "S.P." in the lower right corner.

