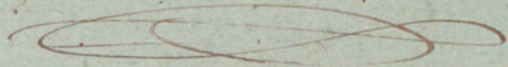


Corni 2^a coppia



Sinfonia

Gerion

M^{ro} Carreras

Sinfonia

in D^{re}

All^o con Brio

Musical notation for the first system, showing treble and bass staves with a 3/4 time signature and a few notes.

Musical notation for the second system, featuring rhythmic patterns and some slurs.

Musical notation for the third system, including a large 'X' mark over a section.

Musical notation for the fourth system, with some slurs and a large '8' mark.

And: mosso

Musical notation for the fifth system, showing a change in tempo and time signature to 3/4.

1^o Tempo

And. Sostto *pp* *12*

pp *rall*

pp *rall*

rall

Handwritten musical notation on two staves. The top staff begins with a treble clef and contains several measures of music, including a double bar line and a fermata. The bottom staff begins with a bass clef and contains several measures of music, including a double bar line and a fermata.

Handwritten musical notation on two staves. The top staff begins with a treble clef and contains several measures of music, including a double bar line and a fermata. The bottom staff begins with a bass clef and contains several measures of music, including a double bar line and a fermata.

Handwritten musical notation on two staves. The top staff begins with a treble clef and contains several measures of music, including a double bar line and a fermata. The bottom staff begins with a bass clef and contains several measures of music, including a double bar line and a fermata.

Handwritten musical notation on two staves. The top staff begins with a treble clef and contains several measures of music, including a double bar line and a fermata. The bottom staff begins with a bass clef and contains several measures of music, including a double bar line and a fermata.

Handwritten musical notation on two staves. The top staff begins with a treble clef and contains several measures of music, including a double bar line and a fermata. The bottom staff begins with a bass clef and contains several measures of music, including a double bar line and a fermata.

Handwritten musical notation on two staves. The top staff begins with a treble clef and contains several measures of music, including a double bar line and a fermata. The bottom staff begins with a bass clef and contains several measures of music, including a double bar line and a fermata.

Two staves of handwritten musical notation. The top staff begins with a treble clef and a key signature of one flat (B-flat). The bottom staff begins with a bass clef and a key signature of one flat. Both staves show a series of notes and rests, with some notes beamed together.

Two staves of handwritten musical notation. The top staff is in treble clef and the bottom staff is in bass clef. The notation includes various note values and rests, with some notes beamed together.

Two staves of handwritten musical notation. The top staff is in treble clef and the bottom staff is in bass clef. The notation includes various note values and rests, with some notes beamed together.

Two staves of handwritten musical notation. The top staff is in treble clef and the bottom staff is in bass clef. The notation includes various note values and rests, with some notes beamed together.

Two staves of handwritten musical notation. The top staff is in treble clef and the bottom staff is in bass clef. The notation includes various note values and rests, with some notes beamed together.

Two staves of handwritten musical notation. The top staff is in treble clef and the bottom staff is in bass clef. The notation includes various note values and rests, with some notes beamed together.

Alte Brillen

pp

Handwritten musical notation on two staves. The top staff uses a treble clef and the bottom staff uses a bass clef. The notation includes various note values and rests. A double bar line is present in the middle of the system.

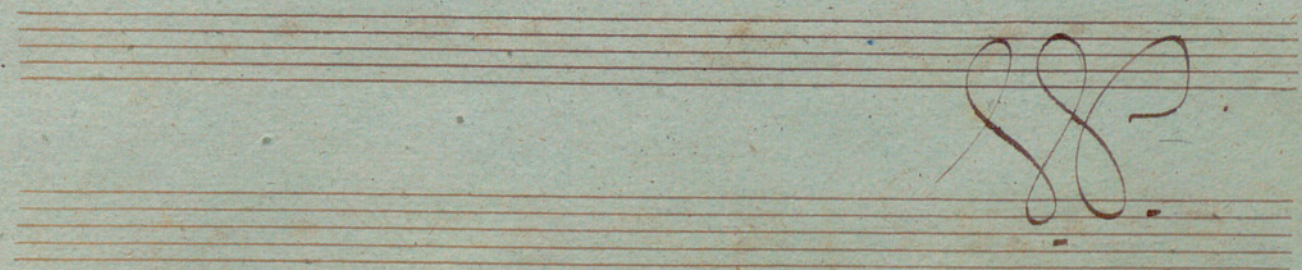
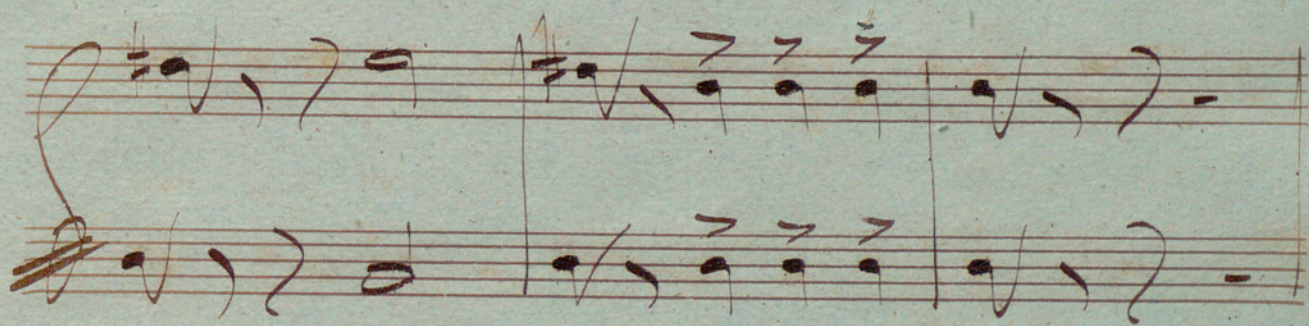
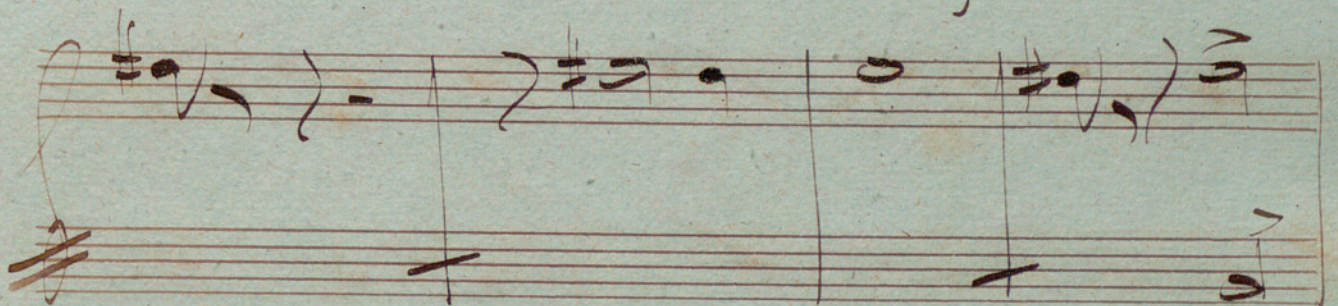
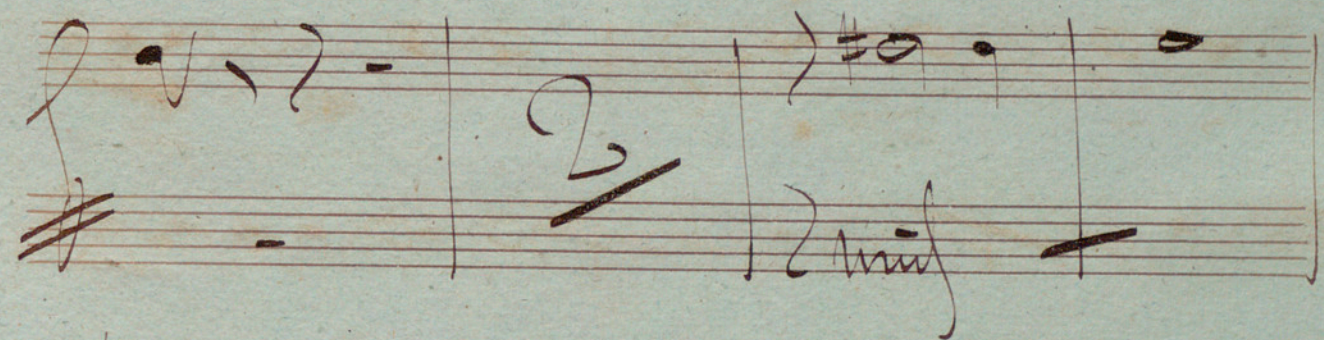
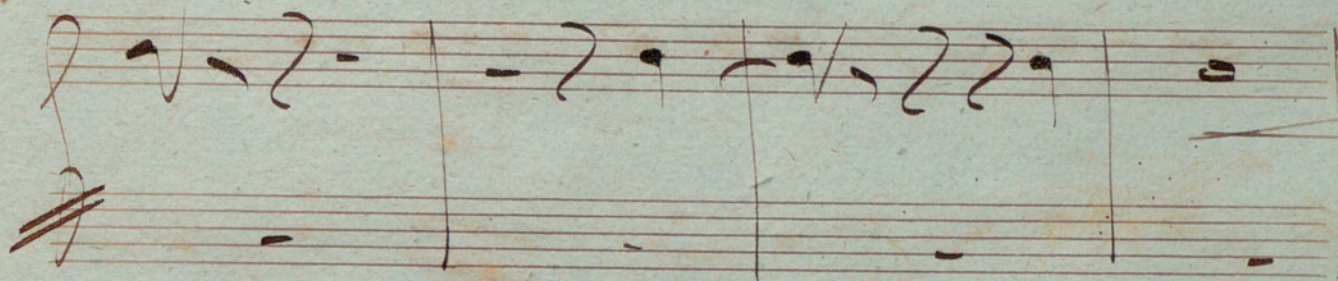
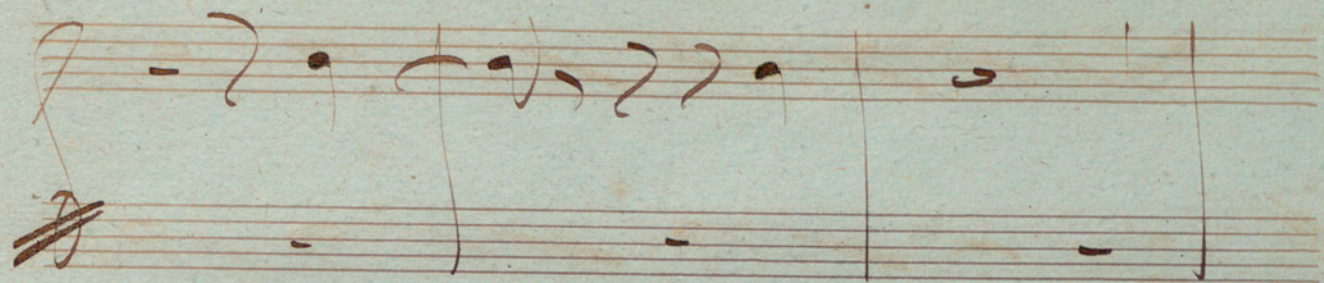
Handwritten musical notation on two staves. The top staff uses a treble clef and the bottom staff uses a bass clef. The notation includes various note values and rests. A double bar line is present in the middle of the system.

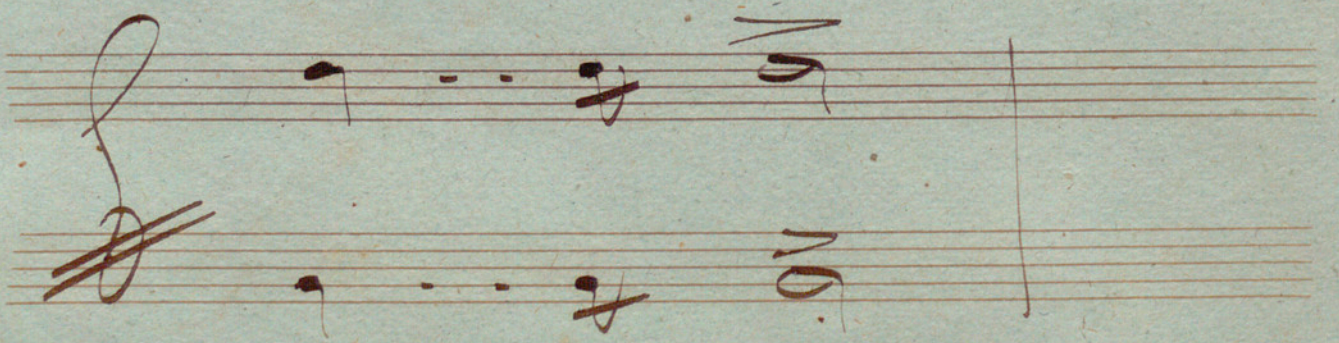
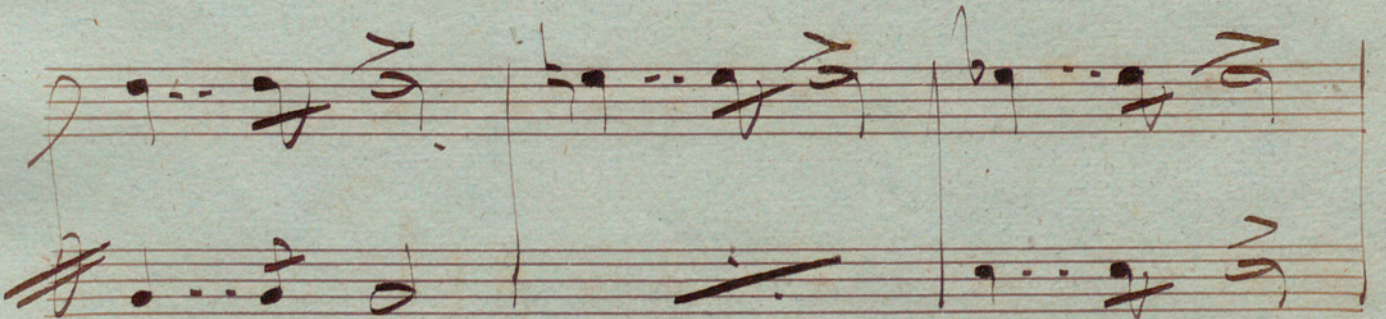
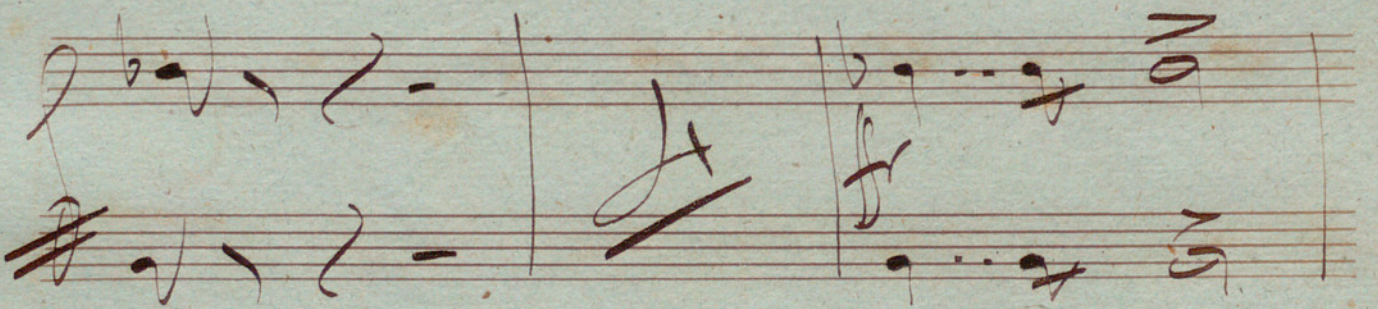
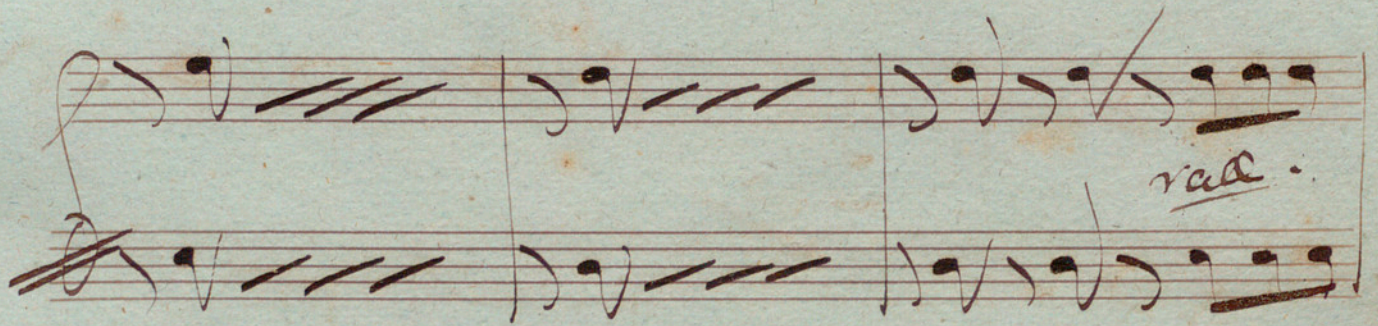
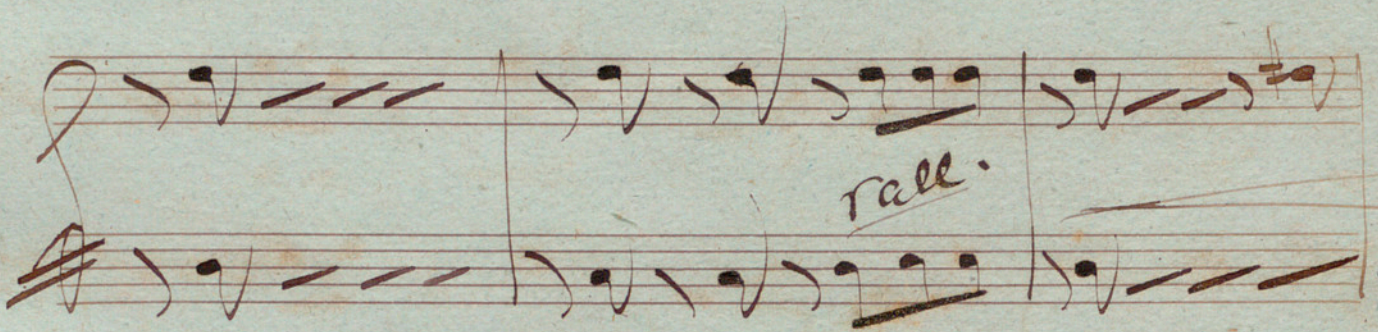
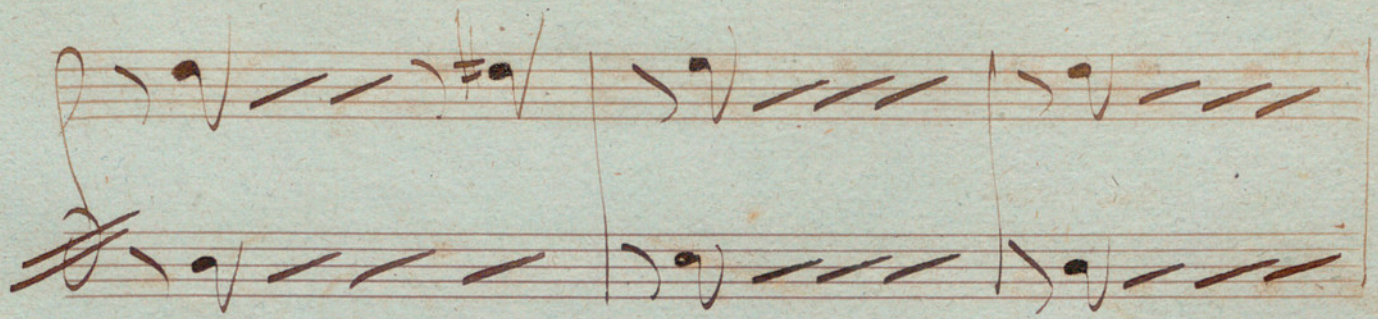
Handwritten musical notation on two staves. The top staff uses a treble clef and the bottom staff uses a bass clef. The notation includes various note values and rests. A double bar line is present in the middle of the system.

Handwritten musical notation on two staves. The top staff uses a treble clef and the bottom staff uses a bass clef. The notation includes various note values and rests. A double bar line is present in the middle of the system.

Handwritten musical notation on two staves. The top staff uses a treble clef and the bottom staff uses a bass clef. The notation includes various note values and rests. A double bar line is present in the middle of the system.

Handwritten musical notation on two staves. The top staff uses a treble clef and the bottom staff uses a bass clef. The notation includes various note values and rests. A double bar line is present in the middle of the system.





2.
Cor 1^a

Handwritten musical score for Cor 1^a, measures 1-4. The score is written on four systems of staves. The first system contains measures 1 and 2, the second system contains measures 3 and 4. The notation includes various notes, rests, and dynamic markings such as accents and slurs. A 'Solo' marking is present above the third measure of the second system. The music is in a key with one flat (B-flat) and a common time signature.

W.A.M.

This image shows a page of handwritten musical notation on aged, yellowed paper. The score is organized into several systems, each consisting of two staves. The notation includes various note values, rests, and dynamic markings. The first system begins with a treble clef and a key signature of one flat (B-flat). The notation is dense, with many notes and rests. The second system continues the piece, featuring similar notation. The third system includes a double bar line and a repeat sign. The fourth system shows a change in notation, with some notes written as whole notes and others as half notes. The fifth system features a double bar line and a repeat sign. The sixth system includes a double bar line and a repeat sign. The seventh system features a double bar line and a repeat sign. The eighth system includes a double bar line and a repeat sign. The ninth system features a double bar line and a repeat sign. The tenth system includes a double bar line and a repeat sign. The eleventh system features a double bar line and a repeat sign. The twelfth system includes a double bar line and a repeat sign. The thirteenth system features a double bar line and a repeat sign. The fourteenth system includes a double bar line and a repeat sign. The fifteenth system features a double bar line and a repeat sign. The sixteenth system includes a double bar line and a repeat sign. The seventeenth system features a double bar line and a repeat sign. The eighteenth system includes a double bar line and a repeat sign. The nineteenth system features a double bar line and a repeat sign. The twentieth system includes a double bar line and a repeat sign. The twenty-first system features a double bar line and a repeat sign. The twenty-second system includes a double bar line and a repeat sign. The twenty-third system features a double bar line and a repeat sign. The twenty-fourth system includes a double bar line and a repeat sign. The twenty-fifth system features a double bar line and a repeat sign. The twenty-sixth system includes a double bar line and a repeat sign. The twenty-seventh system features a double bar line and a repeat sign. The twenty-eighth system includes a double bar line and a repeat sign. The twenty-ninth system features a double bar line and a repeat sign. The thirtieth system includes a double bar line and a repeat sign. The thirty-first system features a double bar line and a repeat sign. The thirty-second system includes a double bar line and a repeat sign. The thirty-third system features a double bar line and a repeat sign. The thirty-fourth system includes a double bar line and a repeat sign. The thirty-fifth system features a double bar line and a repeat sign. The thirty-sixth system includes a double bar line and a repeat sign. The thirty-seventh system features a double bar line and a repeat sign. The thirty-eighth system includes a double bar line and a repeat sign. The thirty-ninth system features a double bar line and a repeat sign. The fortieth system includes a double bar line and a repeat sign. The forty-first system features a double bar line and a repeat sign. The forty-second system includes a double bar line and a repeat sign. The forty-third system features a double bar line and a repeat sign. The forty-fourth system includes a double bar line and a repeat sign. The forty-fifth system features a double bar line and a repeat sign. The forty-sixth system includes a double bar line and a repeat sign. The forty-seventh system features a double bar line and a repeat sign. The forty-eighth system includes a double bar line and a repeat sign. The forty-ninth system features a double bar line and a repeat sign. The fiftieth system includes a double bar line and a repeat sign. The fifty-first system features a double bar line and a repeat sign. The fifty-second system includes a double bar line and a repeat sign. The fifty-third system features a double bar line and a repeat sign. The fifty-fourth system includes a double bar line and a repeat sign. The fifty-fifth system features a double bar line and a repeat sign. The fifty-sixth system includes a double bar line and a repeat sign. The fifty-seventh system features a double bar line and a repeat sign. The fifty-eighth system includes a double bar line and a repeat sign. The fifty-ninth system features a double bar line and a repeat sign. The sixtieth system includes a double bar line and a repeat sign. The sixty-first system features a double bar line and a repeat sign. The sixty-second system includes a double bar line and a repeat sign. The sixty-third system features a double bar line and a repeat sign. The sixty-fourth system includes a double bar line and a repeat sign. The sixty-fifth system features a double bar line and a repeat sign. The sixty-sixth system includes a double bar line and a repeat sign. The sixty-seventh system features a double bar line and a repeat sign. The sixty-eighth system includes a double bar line and a repeat sign. The sixty-ninth system features a double bar line and a repeat sign. The seventieth system includes a double bar line and a repeat sign. The seventy-first system features a double bar line and a repeat sign. The seventy-second system includes a double bar line and a repeat sign. The seventy-third system features a double bar line and a repeat sign. The seventy-fourth system includes a double bar line and a repeat sign. The seventy-fifth system features a double bar line and a repeat sign. The seventy-sixth system includes a double bar line and a repeat sign. The seventy-seventh system features a double bar line and a repeat sign. The seventy-eighth system includes a double bar line and a repeat sign. The seventy-ninth system features a double bar line and a repeat sign. The eightieth system includes a double bar line and a repeat sign. The eighty-first system features a double bar line and a repeat sign. The eighty-second system includes a double bar line and a repeat sign. The eighty-third system features a double bar line and a repeat sign. The eighty-fourth system includes a double bar line and a repeat sign. The eighty-fifth system features a double bar line and a repeat sign. The eighty-sixth system includes a double bar line and a repeat sign. The eighty-seventh system features a double bar line and a repeat sign. The eighty-eighth system includes a double bar line and a repeat sign. The eighty-ninth system features a double bar line and a repeat sign. The ninetieth system includes a double bar line and a repeat sign. The hundredth system features a double bar line and a repeat sign.

2^a viol
2^a viol

Handwritten musical notation on two staves. The top staff begins with a treble clef and a common time signature. The music consists of several measures with notes of varying durations, including quarter and eighth notes, and rests.

Handwritten musical notation on two staves. A double bar line is present in the second measure of the top staff. The notation continues with notes and rests, and includes a dynamic marking of *mf* (mezzo-forte) in the third measure.

Handwritten musical notation on two staves. The top staff features a melodic line with notes and rests. The bottom staff provides a harmonic accompaniment with notes and rests.

Handwritten musical notation on two staves. The top staff has several notes with accents (>). The bottom staff continues the accompaniment. A *rall.* (rallentando) marking is written in the third measure of the top staff.

Handwritten musical notation on two staves. The top staff has notes with slurs. The bottom staff has notes with slurs. Tempo markings are present: *meno.* (meno) at the beginning, *in tempo* in the middle, and *a tempo* at the end.

Handwritten musical notation on two staves. The top staff has notes with slurs and a key signature change to one sharp (F#). The bottom staff has notes with slurs. Tempo markings are present: *rall.* (rallentando) in the second measure and *a tp.* (a tempo) in the third measure.

sin tiempo *altpo* *rall.*

seco *altpo* *rall.* *fa tempo.*

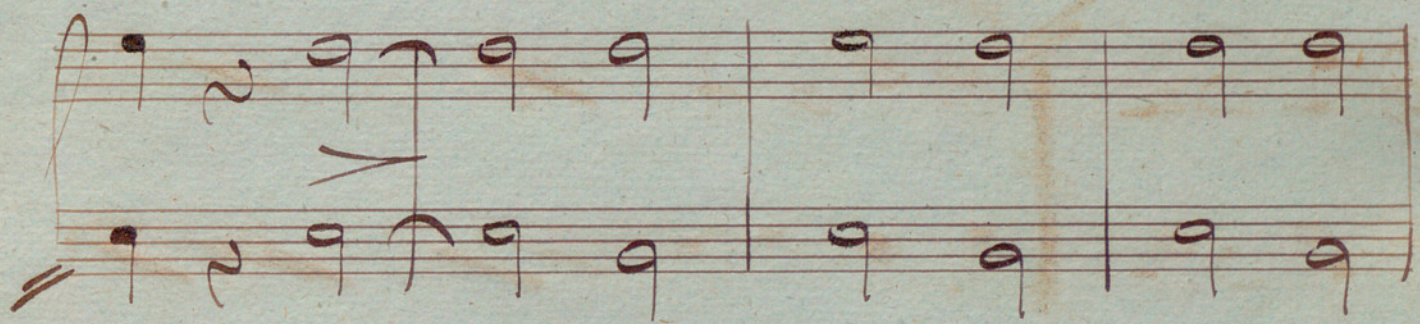
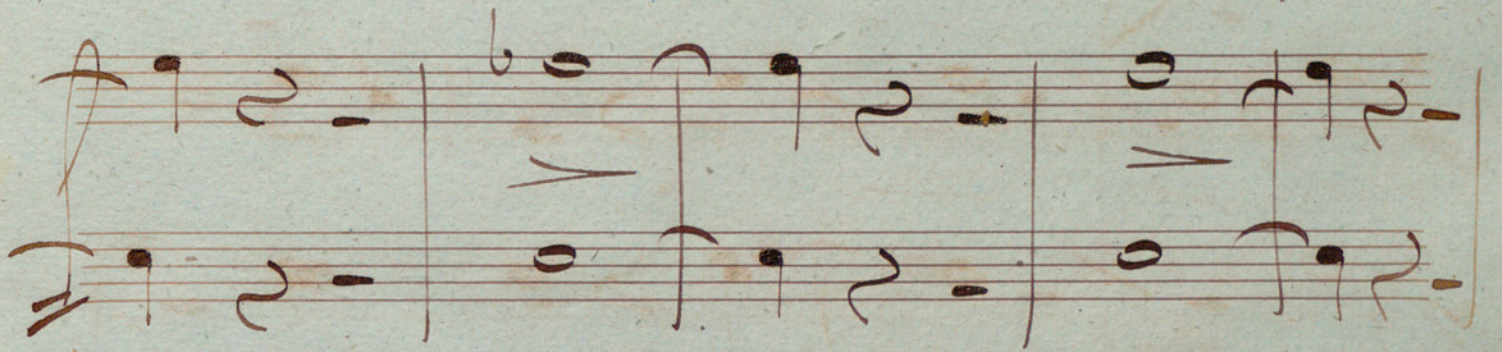
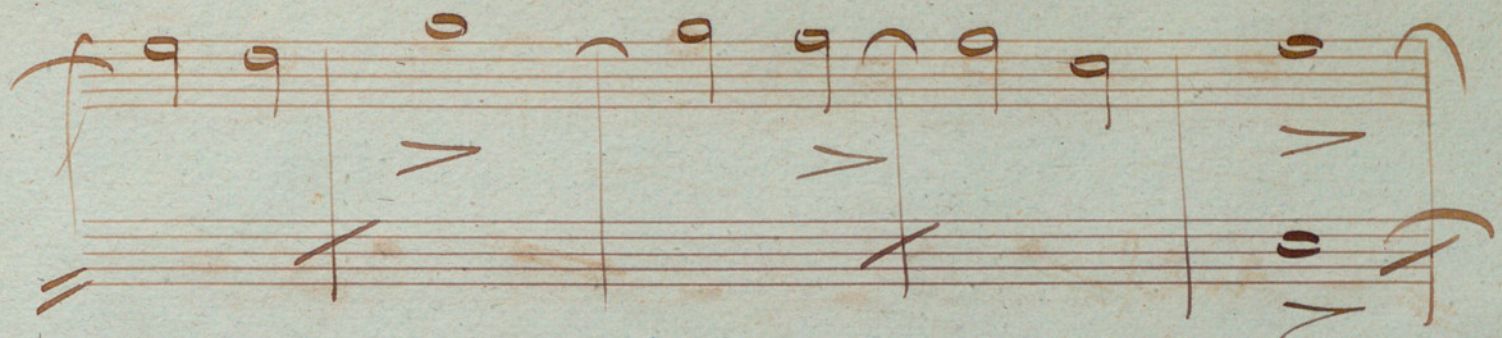
seco

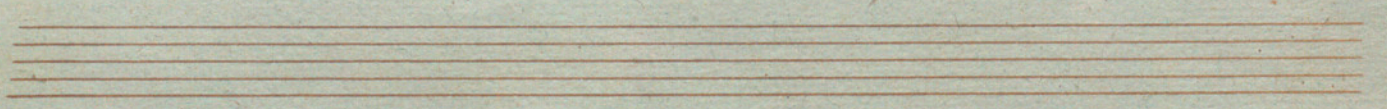
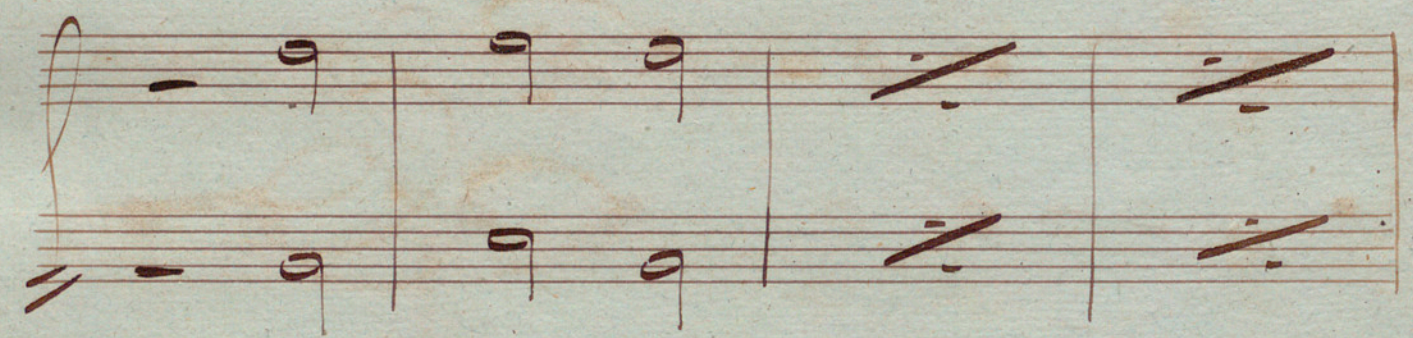
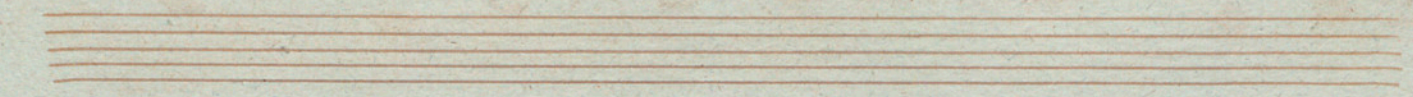
Handwritten signature or flourish

This page contains a handwritten musical score on aged, yellowed paper. The score is organized into several systems of staves. The first system consists of two staves with rhythmic notation, including notes with stems and beams, and rests. The second system also has two staves, with the upper staff featuring a treble clef and a key signature of one flat. The third system is more complex, with two staves and handwritten annotations. The word "pover" is written in cursive above and below the staves, with a slur over the notes. The number "2a" is written to the right of the staves. The fourth system consists of two staves with rhythmic notation. The fifth system also has two staves with rhythmic notation. The sixth system consists of two staves with rhythmic notation. The seventh system consists of two staves with rhythmic notation. The eighth system consists of two staves with rhythmic notation. The ninth system consists of two staves with rhythmic notation. The tenth system consists of two staves with rhythmic notation. The eleventh system consists of two staves with rhythmic notation. The twelfth system consists of two staves with rhythmic notation. The thirteenth system consists of two staves with rhythmic notation. The fourteenth system consists of two staves with rhythmic notation. The fifteenth system consists of two staves with rhythmic notation. The sixteenth system consists of two staves with rhythmic notation. The seventeenth system consists of two staves with rhythmic notation. The eighteenth system consists of two staves with rhythmic notation. The nineteenth system consists of two staves with rhythmic notation. The twentieth system consists of two staves with rhythmic notation. The twenty-first system consists of two staves with rhythmic notation. The twenty-second system consists of two staves with rhythmic notation. The twenty-third system consists of two staves with rhythmic notation. The twenty-fourth system consists of two staves with rhythmic notation. The twenty-fifth system consists of two staves with rhythmic notation. The twenty-sixth system consists of two staves with rhythmic notation. The twenty-seventh system consists of two staves with rhythmic notation. The twenty-eighth system consists of two staves with rhythmic notation. The twenty-ninth system consists of two staves with rhythmic notation. The thirtieth system consists of two staves with rhythmic notation. The thirty-first system consists of two staves with rhythmic notation. The thirty-second system consists of two staves with rhythmic notation. The thirty-third system consists of two staves with rhythmic notation. The thirty-fourth system consists of two staves with rhythmic notation. The thirty-fifth system consists of two staves with rhythmic notation. The thirty-sixth system consists of two staves with rhythmic notation. The thirty-seventh system consists of two staves with rhythmic notation. The thirty-eighth system consists of two staves with rhythmic notation. The thirty-ninth system consists of two staves with rhythmic notation. The fortieth system consists of two staves with rhythmic notation. The forty-first system consists of two staves with rhythmic notation. The forty-second system consists of two staves with rhythmic notation. The forty-third system consists of two staves with rhythmic notation. The forty-fourth system consists of two staves with rhythmic notation. The forty-fifth system consists of two staves with rhythmic notation. The forty-sixth system consists of two staves with rhythmic notation. The forty-seventh system consists of two staves with rhythmic notation. The forty-eighth system consists of two staves with rhythmic notation. The forty-ninth system consists of two staves with rhythmic notation. The fiftieth system consists of two staves with rhythmic notation. The fifty-first system consists of two staves with rhythmic notation. The fifty-second system consists of two staves with rhythmic notation. The fifty-third system consists of two staves with rhythmic notation. The fifty-fourth system consists of two staves with rhythmic notation. The fifty-fifth system consists of two staves with rhythmic notation. The fifty-sixth system consists of two staves with rhythmic notation. The fifty-seventh system consists of two staves with rhythmic notation. The fifty-eighth system consists of two staves with rhythmic notation. The fifty-ninth system consists of two staves with rhythmic notation. The sixtieth system consists of two staves with rhythmic notation. The sixty-first system consists of two staves with rhythmic notation. The sixty-second system consists of two staves with rhythmic notation. The sixty-third system consists of two staves with rhythmic notation. The sixty-fourth system consists of two staves with rhythmic notation. The sixty-fifth system consists of two staves with rhythmic notation. The sixty-sixth system consists of two staves with rhythmic notation. The sixty-seventh system consists of two staves with rhythmic notation. The sixty-eighth system consists of two staves with rhythmic notation. The sixty-ninth system consists of two staves with rhythmic notation. The seventieth system consists of two staves with rhythmic notation. The seventy-first system consists of two staves with rhythmic notation. The seventy-second system consists of two staves with rhythmic notation. The seventy-third system consists of two staves with rhythmic notation. The seventy-fourth system consists of two staves with rhythmic notation. The seventy-fifth system consists of two staves with rhythmic notation. The seventy-sixth system consists of two staves with rhythmic notation. The seventy-seventh system consists of two staves with rhythmic notation. The seventy-eighth system consists of two staves with rhythmic notation. The seventy-ninth system consists of two staves with rhythmic notation. The eightieth system consists of two staves with rhythmic notation. The eighty-first system consists of two staves with rhythmic notation. The eighty-second system consists of two staves with rhythmic notation. The eighty-third system consists of two staves with rhythmic notation. The eighty-fourth system consists of two staves with rhythmic notation. The eighty-fifth system consists of two staves with rhythmic notation. The eighty-sixth system consists of two staves with rhythmic notation. The eighty-seventh system consists of two staves with rhythmic notation. The eighty-eighth system consists of two staves with rhythmic notation. The eighty-ninth system consists of two staves with rhythmic notation. The ninetieth system consists of two staves with rhythmic notation. The ninety-first system consists of two staves with rhythmic notation. The ninety-second system consists of two staves with rhythmic notation. The ninety-third system consists of two staves with rhythmic notation. The ninety-fourth system consists of two staves with rhythmic notation. The ninety-fifth system consists of two staves with rhythmic notation. The ninety-sixth system consists of two staves with rhythmic notation. The ninety-seventh system consists of two staves with rhythmic notation. The ninety-eighth system consists of two staves with rhythmic notation. The ninety-ninth system consists of two staves with rhythmic notation. The hundredth system consists of two staves with rhythmic notation.

Handwritten signature or initials

This image shows a page of handwritten musical notation on aged, yellowed paper. The score is organized into ten systems, each consisting of two staves. The notation is written in dark ink and includes various musical symbols such as notes, rests, and dynamic markings. The word "mf" (mezzo-forte) is written in a cursive hand on the second staff of the first system and the second staff of the seventh system. There are also several slanted lines and double bar lines used to structure the music. The paper shows signs of age, including some staining and discoloration.





Handwritten musical score on aged paper, consisting of three systems of staves. The notation is in brown ink and includes various musical symbols such as notes, rests, and dynamic markings.

- System 1:** Two staves. The upper staff begins with a treble clef and contains a series of notes and rests. The lower staff begins with a bass clef and contains notes and rests.
- System 2:** Two staves. Similar to the first system, with notes and rests in both staves.
- System 3:** Two staves. The upper staff contains notes and rests, with a dynamic marking *seco* above the first measure. The lower staff contains notes and rests, with a dynamic marking *seco* above the first measure. The system concludes with large, decorative flourishes.

Fin.

A large, decorative flourish or signature scribble in brown ink, consisting of several overlapping loops and lines, positioned across the lower half of the page.