

LE DIABLE AU BAL

O. MÉTRA.

QUADRILLE.

1^{er} VIOLON.

CODA.

G. M. 10994.

51355-1

ÉDITEUR DE MUSIQUE
J.B. DIAS
12, R. ALBOUY

APR 18 1894
G. GERARD & C^{ie}
Boulev. des Capucines
MUR DU GR HOTEL



1^{re} VIOLON.

2 *f*

8

FIN

D.C.

3

CODA.

dolce. FIN. *p*

D.C.

4

FIN

Detailed description: This page contains the musical score for the first violin part, measures 2 through 4. The score is written in treble clef with a key signature of two sharps (F# and C#). Measure 2 is in 2/4 time and begins with a forte (*f*) dynamic. It features a melodic line with eighth and sixteenth notes, including a triplet of eighth notes marked with an '8' and a dashed line. Measure 3 is in 3/8 time and continues the melodic development. Measure 4 is in 4/4 time and concludes with a 'CODA.' section, marked 'dolce.' and 'FIN.' with a piano (*p*) dynamic. The page ends with measure 4, which includes a triplet of eighth notes and a final cadence. The word 'FIN.' appears at the end of measure 4.

1^{er} VIOLON.

The first system of the 1st Violin part consists of three staves of music. The notation includes various rhythmic values, accidentals, and dynamic markings. The music is written in a key with one sharp (F#) and a 2/4 time signature.

GALOP.

The GALOP section begins with a treble clef and a 2/4 time signature. It features a series of eighth and sixteenth notes, with a dynamic marking of *p* (piano). The notation includes a first ending bracket labeled '1' and a second ending bracket labeled '3'.

This section of the GALOP includes a 'Cod' marking above the staff and a 'FIN' marking above the staff. The music continues with eighth and sixteenth notes, and a dynamic marking of *ff* (fortissimo) is present. There are handwritten annotations in the margin, including 'Cod' and 'FIN'.

This section of the GALOP includes a '2e 4e fois' marking above the staff and a 'p' (piano) dynamic marking below the staff. The notation consists of eighth and sixteenth notes, with a dynamic marking of *ff* (fortissimo) also present.

This section of the GALOP includes a '2e 4e fois' marking above the staff and a 'p' (piano) dynamic marking below the staff. The notation consists of eighth and sixteenth notes, with a dynamic marking of *ff* (fortissimo) also present.

LE DIABLE AU BAL

QUADRILLE.

O. MÉTRA.

2^e VIOLON.

1

ff

ff

p

S. CODA.

ff

2

ff

FIN.

D.C.

5

p

ff

S. CODA. FIN.

ff

DC.

p

4

ff S FIN

p

p

p S

5

GALOP. S *ff*

Coda

ff S FIN.

ff 1-2-3-5

S

2^e 4^e fois.

ff

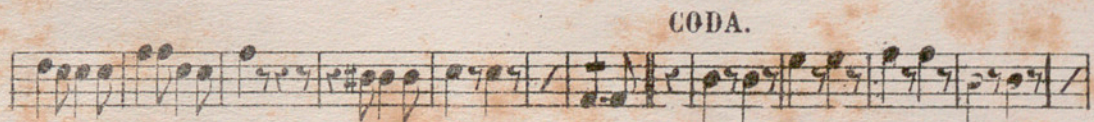
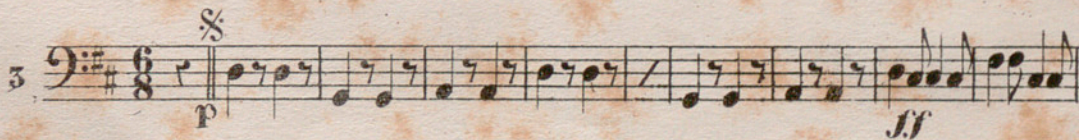
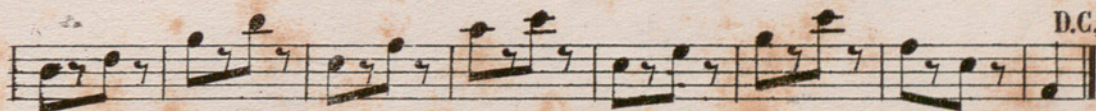
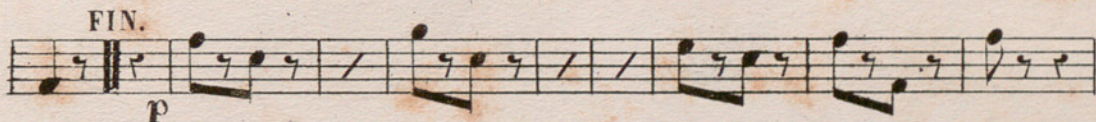
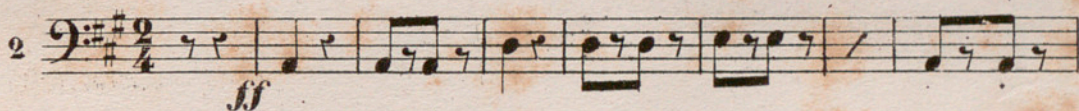
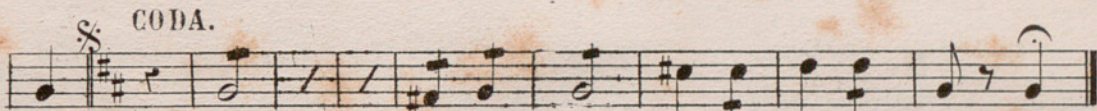
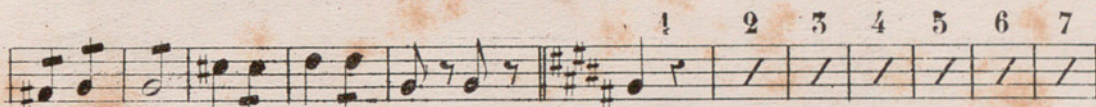
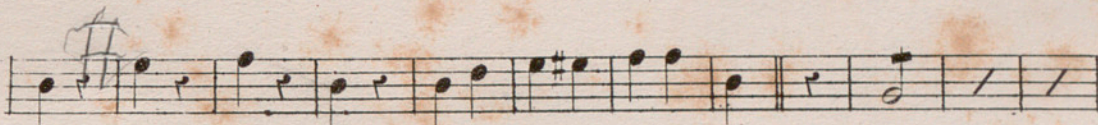
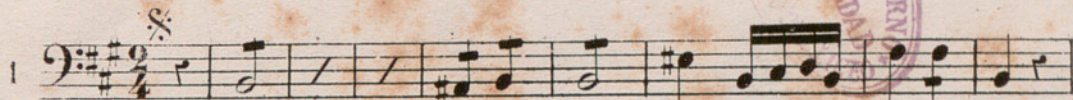
S

LE DIABLE AU BAL

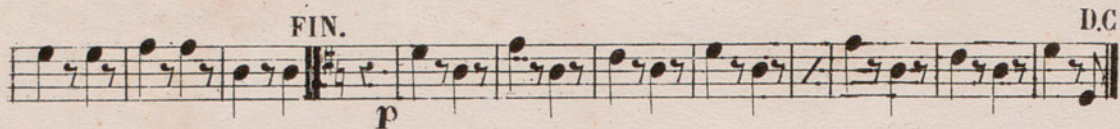
QUADRILLE.

O. MÉTRA.

V^{lle} et CONTRE-BASSE.



FIN. D.C.



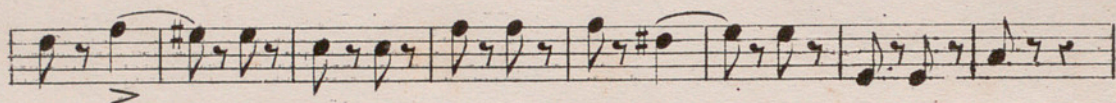
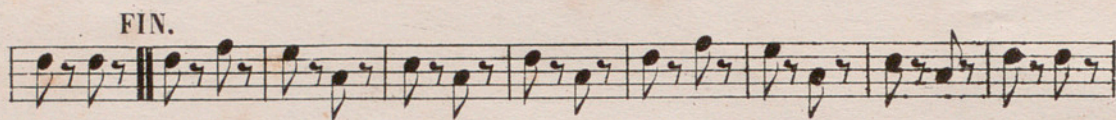
p

4

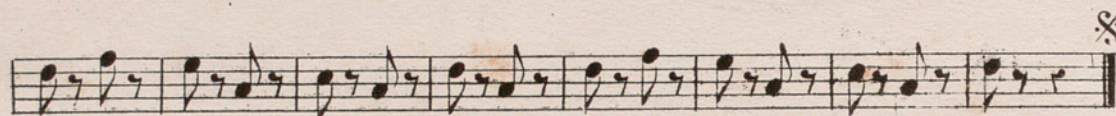


§

FIN.



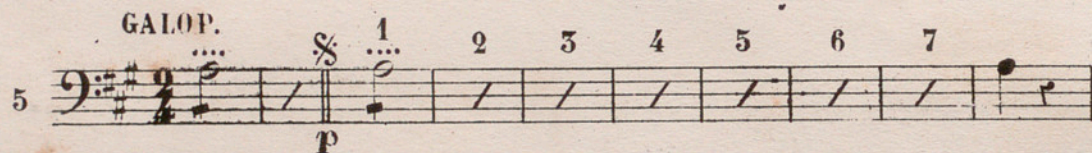
>



§

GALOP.

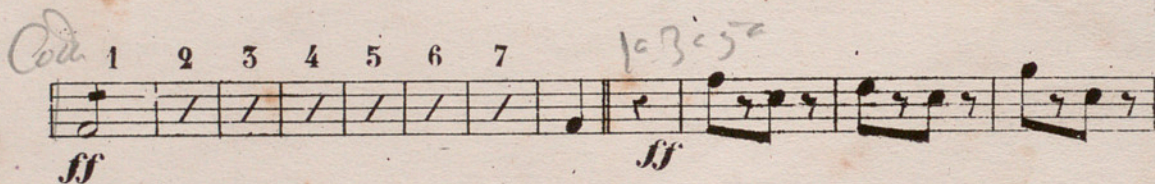
5



p

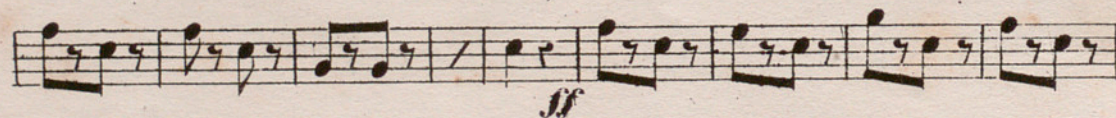
1 2 3 4 5 6 7

Coll. 1 2 3 4 5 6 7



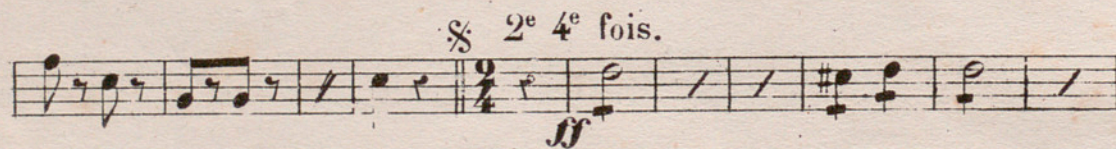
ff *ff*

10305

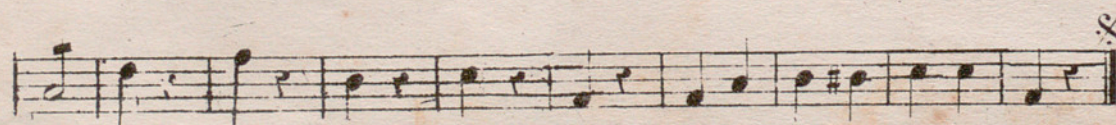


ff

§ 2^e 4^e fois.



ff



§