

Solle D'amour

Schotisch



Violin I

Introd^{me}

~~Allegro~~

Schotisch

41277-2

Handwritten signature or initials in the bottom right corner.

This image shows a page of handwritten musical notation on aged, yellowed paper. The score consists of ten staves. The first staff begins with a treble clef and a common time signature (C). The notation includes various note values, rests, and articulation marks. A section is labeled "Coda" in the third staff. Dynamic markings such as "Cres." and "Fino" are present. The paper shows signs of age, including foxing and some staining.

Handwritten musical score on aged paper, featuring two systems of staves. The notation includes various rhythmic values, accidentals, and dynamic markings. The first system consists of two staves with a melodic line on top and a more complex accompaniment on the bottom. The second system also consists of two staves, with the top staff continuing the melodic line and the bottom staff providing accompaniment. The paper shows signs of age, including creases and discoloration.

1^a

2^a

1^a

2^a

D. c. al $\text{\$}$

Folle D'Amour

Schotisch

Violin 2^{da}

Introd. *Mod^{to}*

Schotisch

coda

fin. *v.p.*

Handwritten musical score on five staves. The top two staves contain vocal lines with lyrics "Ioh Ioh Ioh Ioh Ioh Ioh". The bottom three staves contain instrumental accompaniment. The notation includes various note values, rests, and dynamic markings such as "2a" and "3a".

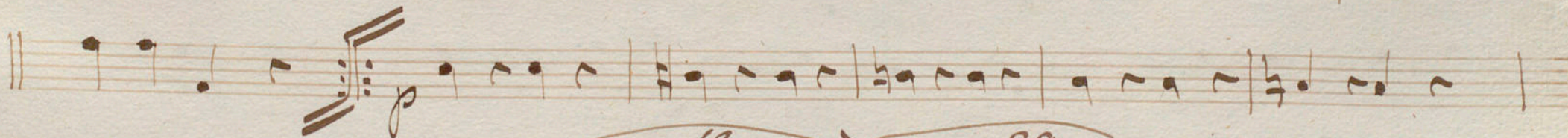
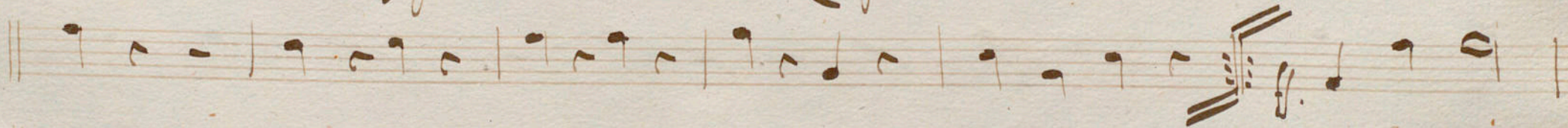
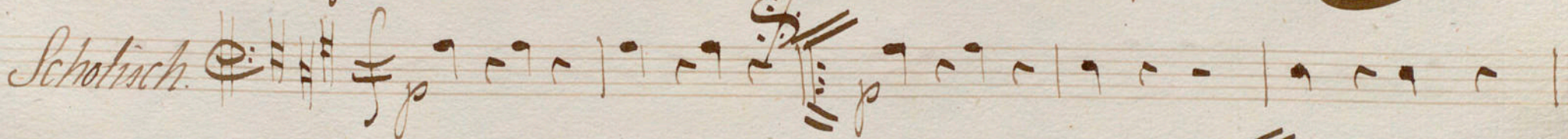
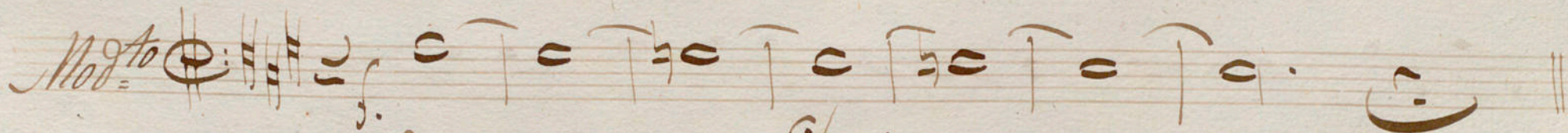
D. C. al. S.

Folle D'annon

Schotisch.

Bajo

Yntrod^{me}



V. D.

Coda || *p*

cres

ff.

Fin

1^a

2^a

1^a

2^a

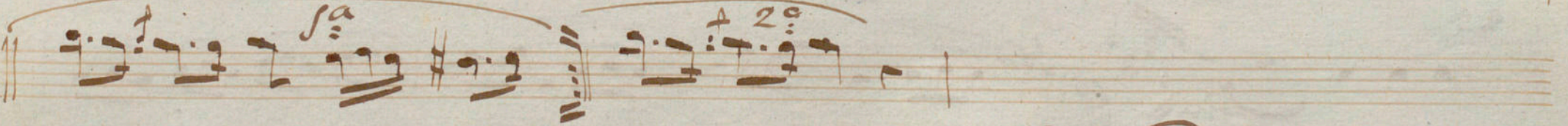
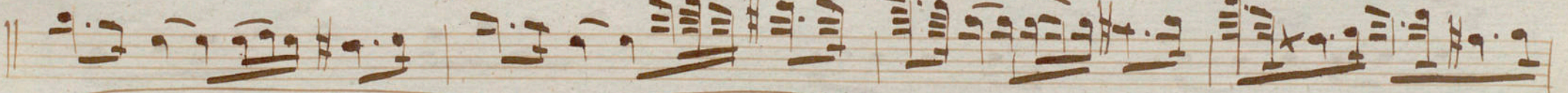
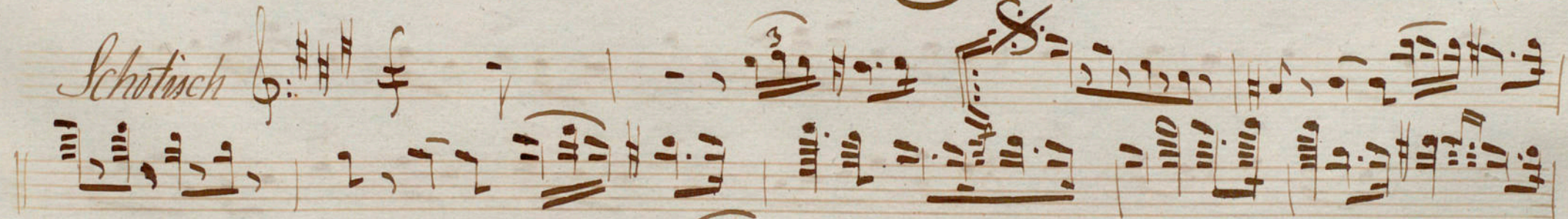
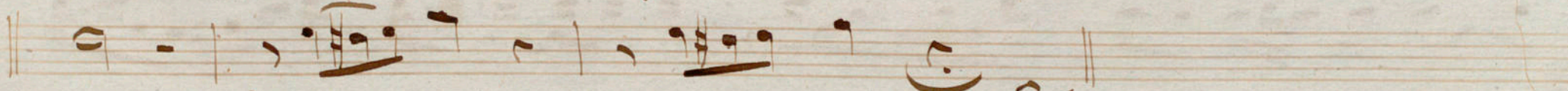
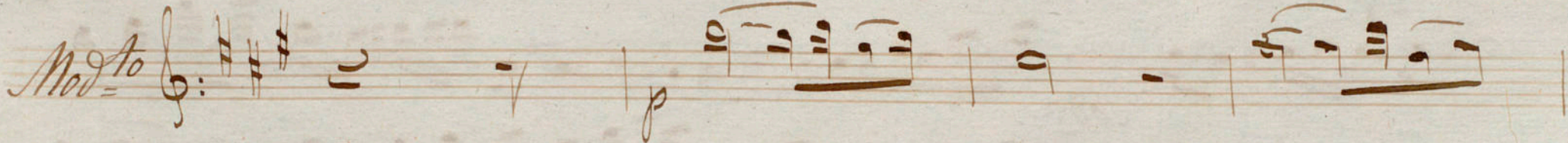
D. C. al S.

Trille D'amour

Schotisch

Haupt

Introdne



Handwritten signature or initials

A handwritten musical score on ten staves. The notation includes various note values, rests, and dynamic markings. The score is written in brown ink on aged, slightly yellowed paper. The first staff begins with a treble clef and a common time signature. The second staff has a key signature change to one sharp (F#). The third staff is marked with a *2^a* and a *Coda* section. The fourth staff contains several *tu* markings above the notes. The fifth staff has *8^a* markings above the notes. The sixth staff has *8^a* markings above the notes. The seventh staff has *8^a* markings above the notes. The eighth staff has *8^a* markings above the notes. The ninth staff has *8^a* markings above the notes and ends with a *Fin* marking and a *pp* dynamic marking. The tenth staff is empty.

A handwritten musical score consisting of seven staves. The notation is in a cursive style, typical of 18th or 19th-century manuscripts. The first six staves contain a single melodic line with various rhythmic values, including eighth and sixteenth notes, and rests. The seventh staff begins with a double bar line and contains a few notes, followed by a double bar line. Above the first note of the seventh staff is the number '29'. Above the final measure of the sixth staff is the number '79'. The manuscript shows signs of age, with some ink bleed-through and staining.

D. C. al F.

Holle D'amour

Schotisch

Clarinete 1^o

yn la
Métrode

Mod.to

Solo

ritard.

Schotisch

V. P.

Coda

Handwritten musical score for a Coda section, consisting of ten staves of music. The notation includes various rhythmic values, accidentals, and dynamic markings. The word "Coda" is written at the beginning of the first staff. The score concludes with the instruction "D.C. al F." written in large, elegant cursive at the end of the tenth staff. The manuscript is on aged, slightly yellowed paper.

Annotations and markings include:

- pp* (pianissimo) in the first staff.
- te* (trill) markings above several notes in the second, third, and fourth staves.
- cres* (crescendo) marking above the fifth staff.
- pre fois* (presto) markings above the sixth and eighth staves.
- A double bar line with repeat dots at the end of the first staff.
- A double bar line with repeat dots at the end of the fourth staff.
- A double bar line with repeat dots at the end of the eighth staff.

Folle D'Amor

Schotisch

Clarinete 2^{do}

In la

Introd^{me}

Musical notation for the first system, including a treble clef, a key signature of one sharp (F#), and a 2/4 time signature. The notation consists of a single staff with a series of notes and rests.

Musical notation for the second system, including a treble clef, a key signature of one sharp (F#), and a 2/4 time signature. The notation consists of three staves with various notes, rests, and dynamic markings such as 'p' and 'f'. There are also some numerical markings like '3' and '8'.


V. P.

Coda 3 *cres*

cres

Fin

p

D. C. al 

Folle D'Amour

Schotisch

Trompas

en Mi⁴

Introd^{ne}

Musical score for Trompas, featuring a Minuet and a Schottisch. The score is written on five staves. The first staff is labeled "Minuet" and the second "Schottisch". The music is in G major (one flat) and 2/4 time. The score includes various musical notations such as notes, rests, and dynamic markings like *p* and *f*.

V. J.

Coda

The musical score for the Coda section is written across seven staves. The notation includes various rhythmic values, rests, and dynamic markings. The first staff begins with a treble clef and a common time signature. The second staff starts with a piano (*p*) marking. The third staff features a crescendo (*cres*) marking. The fourth staff contains a fermata over a note. The fifth staff includes a *Fin* marking and a double bar line. The sixth and seventh staves conclude the section with final notes and rests.

D. C. al *S.*

Tolle D'Amour en la $\frac{7}{8}$ Schotisch Berge Cornet in 1^o

Andante - Moderato $\frac{6}{8}$

Schotisch f

1^a 2^a 1^a 2^a

V.P.

A handwritten musical score on ten staves. The notation includes various note values, rests, and dynamic markings. The first staff begins with a treble clef and a common time signature. The second staff features a *Solo* marking and a *f* dynamic. The third staff includes a *Solo* marking, a triplet of eighth notes, and a *Coda* section. The fourth staff has a *cres* marking. The fifth staff also has a *cres* marking. The sixth staff contains a *Fin* marking and a large flourish. The seventh staff features a triplet of eighth notes. The eighth and ninth staves continue the musical notation. The tenth staff is empty.

A handwritten musical score consisting of five staves. The notation is in brown ink on aged, slightly yellowed paper. The first staff begins with a double bar line and contains a series of notes with slurs. The second staff starts with a treble clef and a key signature of one flat (B-flat), followed by notes and rests. The third staff features a treble clef, a key signature of one flat, and includes a section with a double bar line and a repeat sign (two dots) above it. The fourth and fifth staves continue the melodic line with various note values and slurs. The piece concludes with a double bar line at the end of the fifth staff.

Final.

Holle D'Amour. *en la* Schottisch Bartumeys Piston 2^{do}

Introduction $\frac{2}{6}$

Schottisch $\frac{2}{16}$

cres

coda $\frac{3}{4}$

$\frac{8}{}$

V. P.

Trombones

Handwritten musical score for Trombones, consisting of five staves. The notation includes various note values, rests, and dynamic markings. The first staff begins with a double bar line and a repeat sign. The second staff contains a large 'S' marking. The third staff features a section with a 'Trombones' label and a 'S' marking. The fourth staff continues the musical notation. The fifth staff concludes with a double bar line and the instruction 'D.C. al S.'.

Five empty musical staves at the bottom of the page, providing space for further notation.

Holle D'Amour

Schotisch.

Frembon 1^o

Introd^{me}

Mod^{to} Schotisch. 2

cres

coda.

Fin

Handwritten flourish

A handwritten musical score consisting of five staves. The notation is in a historical style, likely from the 18th or 19th century. The first four staves contain dense musical notation with various note values, rests, and dynamic markings such as 'p' (piano) and 'f' (forte). The fifth staff begins with a double bar line and a fermata, followed by the instruction 'D.C. al F.' written in a cursive hand.

D.C. al F.

Tolle D'Amour

Schotisch.

Frembon 2^{do}

Introd^{me}

Mod^{to}  *Schotisch.* 





Fin.

Coda

cres

cres

V.P.

A handwritten musical score on five staves. The notation is in a historical style, featuring various note values, rests, and dynamic markings. The first staff begins with a treble clef and a common time signature. The music is written in a single system across five staves. The notation includes many beamed notes, rests, and some complex rhythmic figures. There are several dynamic markings, including 'p' (piano) and 'f' (forte), and some markings that look like '10' or '110'. The paper is aged and shows some staining.

D. C. al. S.

Folle Dammour

W. J. 22

Schotisch

Trambon 3^o

Introd^{me}

Mod^{to} $\text{C} \sharp \sharp \sharp = 2$ f Schotisch. f f

f. *cres* *coda p.* *W. J.*

A handwritten musical score consisting of five staves. The notation is in a historical style, likely from the 17th or 18th century. The first staff begins with a treble clef and a common time signature (C). The music features various note values, including minims, crotchets, and quavers, along with rests and repeat signs. The second staff contains a large, ornate flourish. The third staff continues the melodic line with similar note values and rests. The fourth staff includes a section with a double bar line and a repeat sign, followed by a section with a large flourish. The fifth staff concludes the piece with a double bar line and a repeat sign.

D. C. al F.

P.

Folle D'amour

Schotisch

Ofigle

Introdne

Mod. Ad. $\text{C} \# \# \#$

6

Schotisch $\text{C} \# \# \#$ f 2

2

$\text{C} \# \# \#$ 4

Handwritten musical notation for 'Folle D'amour' and 'Schotisch'. The notation is written on six staves. The first staff shows the key signature (three sharps) and the time signature (6/8). The second staff shows the key signature (three sharps), the time signature (2/4), and the tempo marking 'Schotisch'. The notation includes various rhythmic values, accidentals, and dynamic markings such as 'f' and 'p'. There are also some decorative flourishes and a large '8' at the end of the fifth staff.

V.P.

Coda || *L*

cres

f.

1^a

2^a

6

6

1^a

2^a

D. C. al $\text{\textcircled{S}}$

Folle D'amour

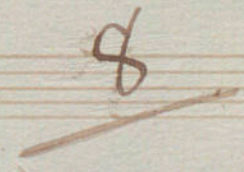
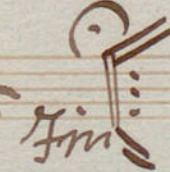
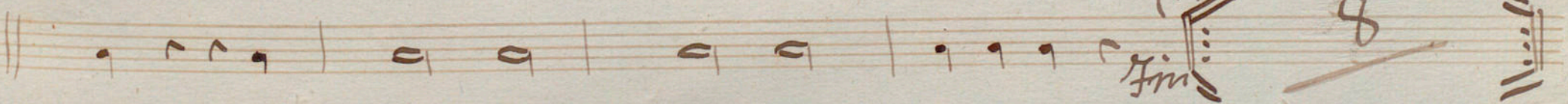
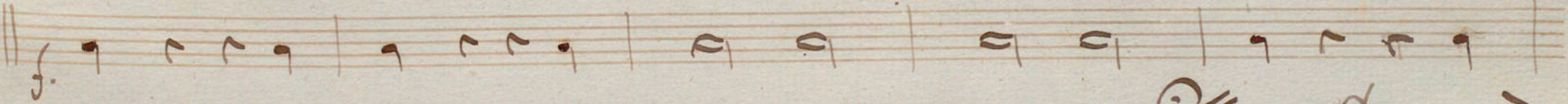
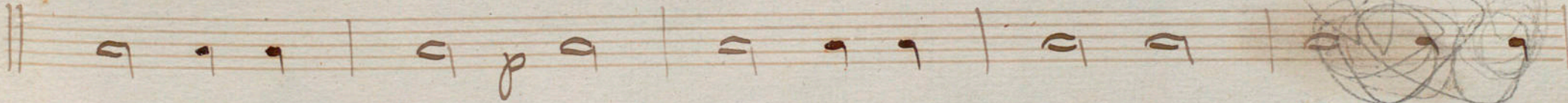
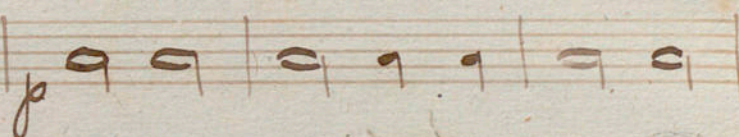
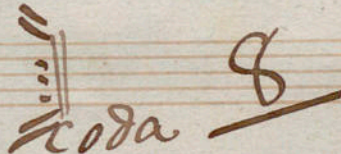
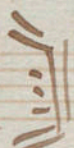
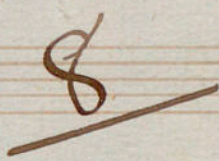
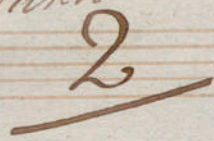
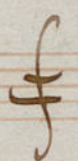
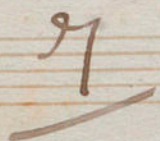
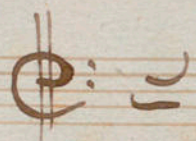
Schotisch

Bombo

Introd^{ne}

Schotisch

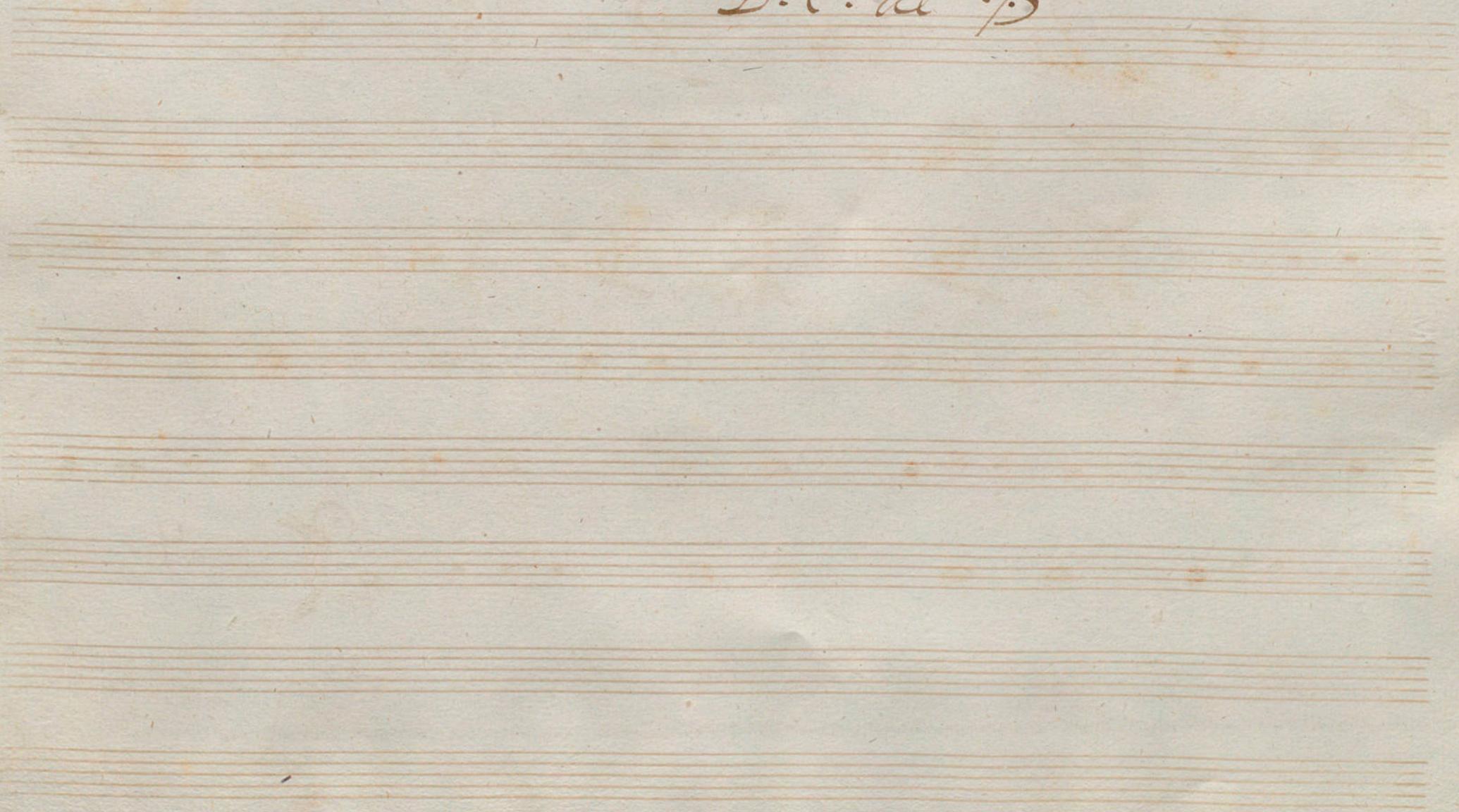
Molto



V. D.



D. C. al §



Tolle D'amour

Schotisch

Batterie

Introd.^o mod.^o

2/4

4

2/4

2

♩

16

16

Codax

p

16