

# Trompas 1.<sup>a</sup>

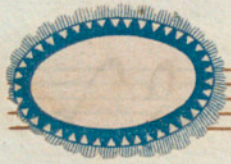
EL SARGENTO RATAPLAN,

Introd<sup>on</sup> Maestro In Fa  $\frac{3}{2}$

Vals  $\frac{3}{2}$

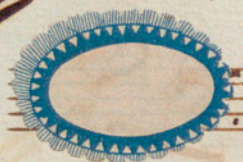
V. S. En Sol.





En Sol *Tempo di Piacca*  $\text{G} \frac{3}{4}$  *F.*

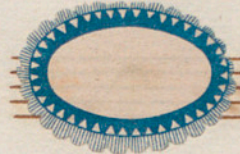
Handwritten musical score consisting of eight staves. The notation includes various note values, rests, and dynamic markings such as *pp* and *p*. The piece concludes with a double bar line and the instruction *F. D.C. hasta el redoble.*



*Matete* 28

Four empty musical staves at the bottom of the page.





En Mi Marcial.  $\text{C}$

Handwritten musical notation for the first piece, consisting of four staves. The notation includes various rhythmic values and rests, typical of a trumpet part in common time.



En Mi  $\text{C}$   $\frac{3}{4}$

Handwritten musical notation for the second piece, consisting of five staves. The notation includes various rhythmic values and rests, typical of a trumpet part in 3/4 time. A second blue decorative oval is present at the beginning of the piece. The word "Valse" is written in the third staff.



Handwritten musical score on aged paper, featuring ten staves of music. The notation includes various rhythmic values, clefs, and dynamic markings. Key annotations include "ataca a la Polka vivo", "D.C. 2ma y Coda", and "Coda". A 3/8 time signature with "mi 4" is also present.





Handwritten musical notation on seven staves. The first staff begins with a treble clef, a key signature of one sharp (F#), and a 2/4 time signature. The notation includes various rhythmic values such as eighth and sixteenth notes, rests, and repeat signs. The piece concludes with the instruction "D.C. hasta el redoble" and a flourish.

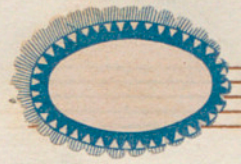
D.C. hasta el redoble  
V.S.

Three empty musical staves at the bottom of the page, showing faint ghosting of the notation from the previous section.









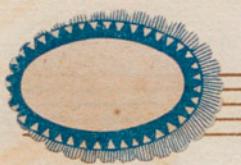
En Re. Vivo.

Handwritten musical notation on a five-line staff. It begins with a treble clef, a key signature of one sharp (F#), and a 2/4 time signature. The notation includes several measures of music with various note values and rests.

Handwritten musical notation on a five-line staff, continuing the piece from the first staff.

Handwritten musical notation on a five-line staff, continuing the piece.

Handwritten musical notation on a five-line staff. It concludes with the instruction "D.C. hasta que caen todos" written in cursive.



allegro

Handwritten musical notation on a five-line staff. It begins with a treble clef, a key signature of one sharp (F#), and a 6/8 time signature. The notation includes several measures of music.

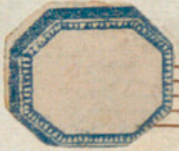
Handwritten musical notation on a five-line staff, continuing the piece.

Handwritten musical notation on a five-line staff, continuing the piece.

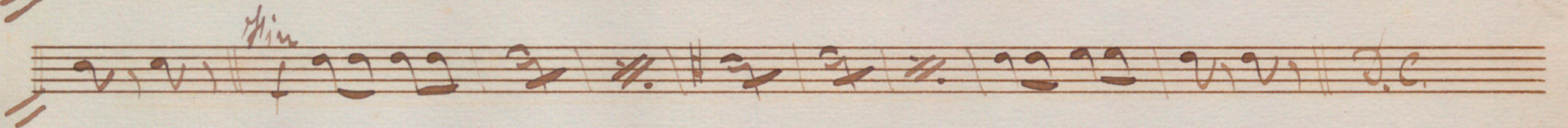
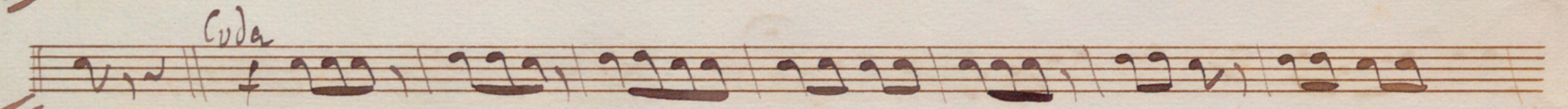
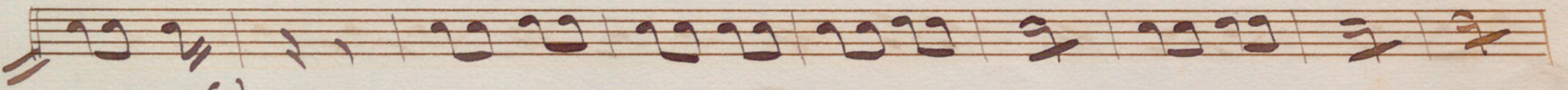
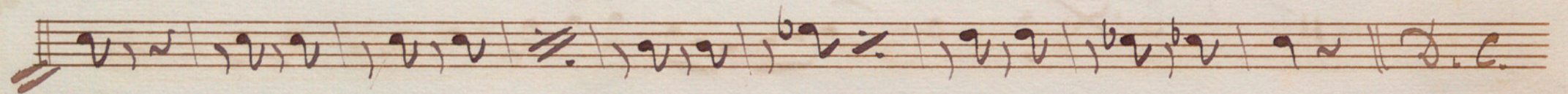
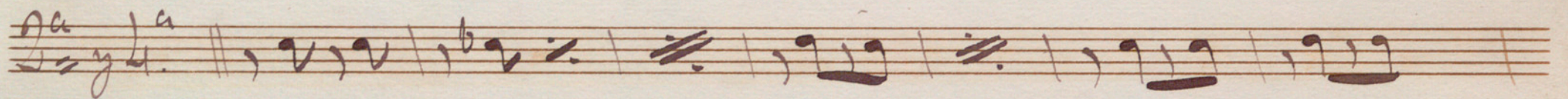
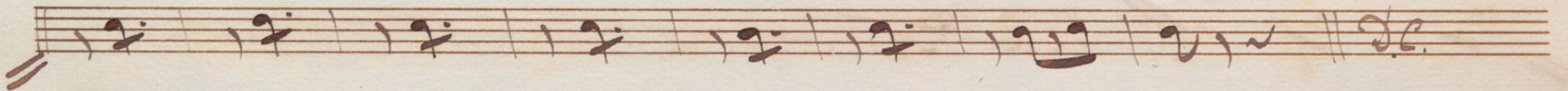
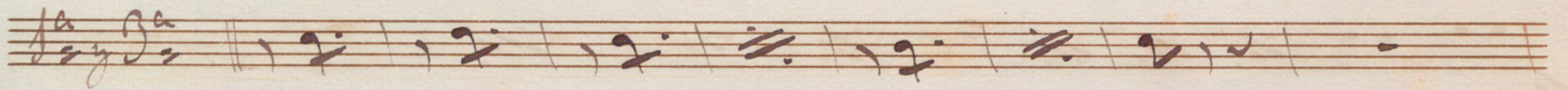
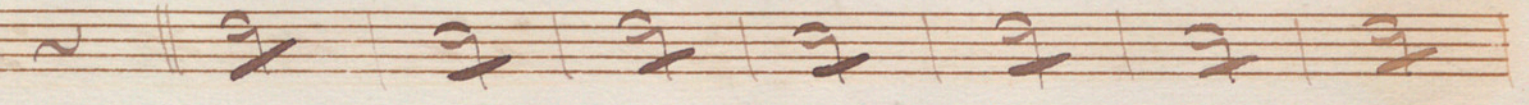
Handwritten musical notation on a five-line staff. It concludes with the instruction "D.C. hasta el redoble." written in cursive.

*l'igue right Orfeo!*

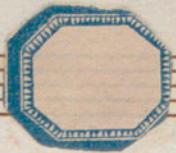




En Re  $\frac{2}{4}$







Handwritten musical notation on a single staff, including a treble clef, a 2/4 time signature, and notes. The word "Coda" is written above the staff on the right side.

Handwritten musical notation on a single staff, including notes and rests. The word "Fin." is written above the staff on the right side.

Handwritten musical notation on a single staff, including notes and rests. The word "1a Ba. Men" is written above the staff on the left side.

Handwritten musical notation on a single staff, including notes and rests. The word "d.c." is written at the end of the staff.

Handwritten musical notation on a single staff, including notes and rests. The word "2a Ba. 4." is written above the staff on the left side.

Handwritten musical notation on a single staff, including notes and rests.

Handwritten musical notation on a single staff, including notes and rests. The word "d.c." is written at the end of the staff.

Four empty musical staves at the bottom of the page.



# Trompas 2.<sup>a</sup>

## EL SARGENTO RATAPLAN,

Introd. Maestro En Fa.  $\text{C} \frac{3}{2}$

Musical notation on a staff.



Val.  $\text{C} \frac{3}{2}$

Musical notation on a staff.

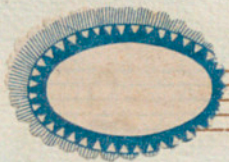
Musical notation on a staff, starting with a '9' marking.

Musical notation on a staff.

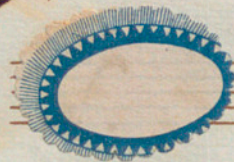
Musical notation on a staff, ending with a '4' marking.

V. S. En Sol.





*Tempo di Polaca En Sol*  $\text{C} \frac{3}{4}$

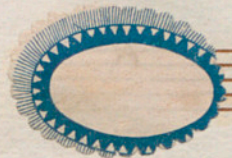


*Facett 28* |

Empty musical staff.

Empty musical staff.





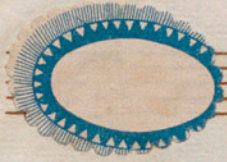
En Mi Marcial

Handwritten musical notation on a single staff, starting with a treble clef and a common time signature (C). The notation includes several measures with notes and rests.

Handwritten musical notation on a single staff, continuing the piece with various note values and rests.

Handwritten musical notation on a single staff, featuring a series of rhythmic patterns and notes.

Handwritten musical notation on a single staff, showing a continuation of the melodic line.



Handwritten musical notation on a single staff, starting with a treble clef and a 3/2 time signature. The notation includes notes with accents and rests.

Handwritten musical notation on a single staff, continuing the piece with various note values and rests.

Handwritten musical notation on a single staff, featuring a triplet of notes and other rhythmic markings.

Handwritten musical notation on a single staff, starting with a treble clef and a 3/2 time signature. The notation includes notes with accents and rests.

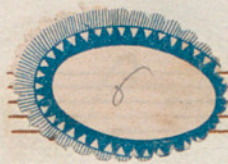
Handwritten musical notation on a single staff, continuing the piece with various note values and rests.

Handwritten musical notation on a single staff, showing a continuation of the melodic line.



Handwritten musical score on ten staves. The score includes various musical notations such as notes, rests, and clefs. Key annotations include "ataca a la Polka", "D.C. 2ma y coda", and "Coda". The music is written in brown ink on aged paper.

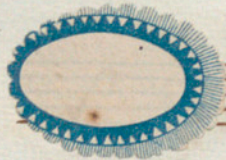




Handwritten musical score on seven staves. The notation includes various note values, rests, and bar lines. The first staff begins with a treble clef, a key signature of one sharp (F#), and a 2/4 time signature. The music is written in a cursive, historical style. The seventh staff concludes with the instruction: *D.C. hasta el redoble y S.*

Three empty musical staves at the bottom of the page, consisting of five-line systems.





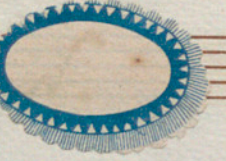
*4* *Me*  $\phi$   $\frac{2}{4}$  ~~Fin~~

*Coda*

*Coda*



*Me*  $\phi$   $\frac{2}{4}$  ~~Fin~~



*Me*  $\phi$   $\frac{2}{4}$  <sup>*Coda*</sup>







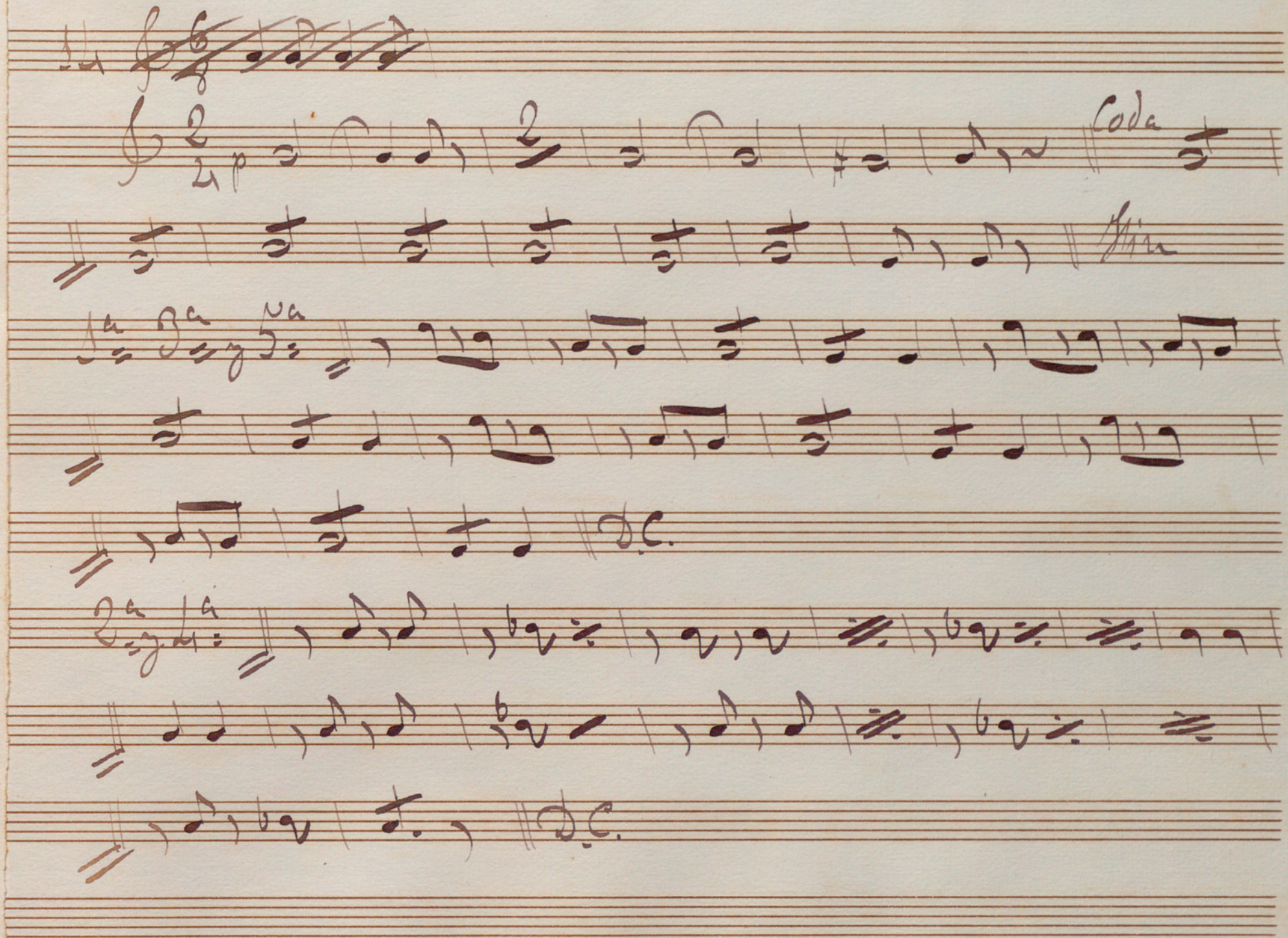
En Me

Fin

Handwritten musical score on ten staves. The score is written in brown ink on aged paper. It begins with a treble clef and a 2/4 time signature. The first staff contains a melodic line with a fermata. The second and third staves are bass clef parts. The fourth and fifth staves are treble clef parts. The sixth and seventh staves are bass clef parts. The eighth and ninth staves are treble clef parts. The tenth staff is a bass clef part. The score includes various musical notations such as notes, rests, slurs, and dynamic markings like 'f' and 'Coda'. The word 'Fin' is written at the end of the first staff.



Handwritten musical score on ten staves. The notation includes treble and bass clefs, a 2/2 time signature, and various musical symbols such as notes, rests, and bar lines. The word "Coda" is written above the second staff, and "Fin" is written above the third staff. The lyrics "La Ga Na" and "2a 1a" are written above the fourth and sixth staves, respectively. The score concludes with a double bar line and a C-clef symbol.



La Ga Na

Coda

Fin

2a 1a



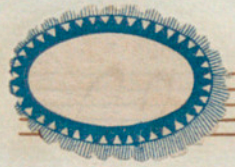
# Trombones.

EL SARGENTO RATAPLAN,

*Andante* Maestoso  $\text{D:} \frac{3}{2}$

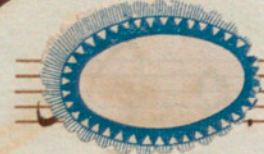
*Vals*





*Tempo di Polaca*  $\text{D:} \# \text{2}$   $\text{3}$   $\text{8}$   $\text{4}$

Handwritten musical notation on five staves. The notation includes various rhythmic values, accidentals, and dynamic markings. A large '16' is written at the end of the second staff, and the word 'rit.' is written vertically on the third staff. The piece concludes with a double bar line and the instruction 'hasta el redoble.' written across the fifth staff.



*Tacet.*  $\text{28}$   $\text{1}$

Four empty musical staves at the bottom of the page, indicating the end of the written music on this page.





Marcial.

Handwritten musical notation for the first system, consisting of four staves. The first staff begins with a treble clef, a key signature of three sharps (F#, C#, G#), and a common time signature (C). The notation includes various rhythmic values such as eighth and sixteenth notes, rests, and beams.



Handwritten musical notation for the second system, consisting of two staves. The first staff begins with a treble clef, a key signature of three sharps (F#, C#, G#), and a 3/2 time signature. The notation includes notes with stems and beams.

Handwritten musical notation for the third system, consisting of two staves. The first staff begins with the word "Cello:" written vertically. The notation includes notes with stems and beams.

Handwritten musical notation for the fourth system, consisting of two staves. The first staff begins with the word "Vcllo:" written vertically. The notation includes notes with stems and beams.

Handwritten musical notation for the fifth system, consisting of two staves. The first staff begins with the word "Vcllo:" written vertically. The notation includes notes with stems and beams.



ataca a la

mi mayor

Polka

Coda

2 mas y sigue la





Handwritten musical score on six staves. The notation includes various rhythmic values, accidentals, and dynamic markings. The first staff begins with a treble clef and a key signature of one sharp (F#). The music is written in a cursive, historical style. The sixth staff concludes with the instruction: *S. D. C. hasta el redoble.*

Four empty musical staves at the bottom of the page, showing faint ghosting of the notation from the reverse side of the paper.





Handwritten musical notation on two staves. The top staff begins with a treble clef, a key signature of one sharp (F#), and a 2/4 time signature. The music consists of several measures with various note values and rests.

Handwritten musical notation on two staves. The notation continues from the previous system. The word "Coda" is written in the right margin between the two staves.

Handwritten musical notation on two staves. The word "2<sup>a</sup> vez" is written above the first staff. The word "Coda" is written in the right margin. The notation includes various rhythmic patterns and rests.




Handwritten musical notation on two staves. The notation continues with various note values and rests.

Handwritten musical notation on two staves, showing the final notes of the piece.

~~Handwritten scribble~~  
 D.C. hasta que se va' el Largo<sup>to</sup>



2<sup>a</sup> 4<sup>a</sup>



Handwritten musical notation on two staves. The first staff begins with a treble clef, a key signature of one sharp (F#), and a 2/4 time signature. The second staff begins with a bass clef, a key signature of one sharp (F#), and a 2/4 time signature. The word "Coda" is written in the first measure of the second staff. The notation consists of rhythmic patterns and stems.

Handwritten musical notation on two staves. The first staff contains a melodic line with various note values and rests. The second staff contains a bass line with rests and some notes. The word "Unis" is written in the middle of the second staff.

Handwritten musical notation on two staves. The first staff contains a melodic line with various note values and rests. The second staff contains a bass line with rests and some notes.

Handwritten musical notation on two staves. The first staff contains a few notes and rests. The second staff contains the instruction "D.C. Sver y coda." written in a cursive hand.

Two empty musical staves at the bottom of the page.





*Vivo*

Handwritten musical score on five staves. The notation includes treble clefs, a key signature of one sharp (F#), and a 2/4 time signature. The music features various rhythmic patterns, including eighth and sixteenth notes, and rests. A *fmo* (forzando) marking is present in the first staff. The piece concludes with a double bar line and a fermata.

*D.C. hasta que calen*

Four empty musical staves at the bottom of the page, intended for further notation.



Grum bones.

hasta el redoble.

V. S. Piquet Arce.







This image shows a page of handwritten musical notation on aged, yellowed paper. The score is organized into three systems, each consisting of two staves. The first system begins with a treble clef, a key signature of one sharp (F#), and a 2/4 time signature. The notation includes various rhythmic values such as eighth and sixteenth notes, often beamed together, and rests. The second system features a section marked "Coda" in the right-hand staff. The third system includes a section marked "Fin" in the right-hand staff. The page concludes with the initials "D.C." and the signature "W. Schell".



*Code*

*Fin*

*d.c.*

*2<sup>a</sup> y 4<sup>a</sup>*

*Vivis*

*d.c.*