

LA SURPRISE DE L'AMOUR

Opéra Comique de POISE.

QUADRILLE pour ORCHESTRE

1^{er} VIOLON.



1

2

3

TRIO.

mf

D.C.

4

f

sf

tr

D.C.

5

p

f

1^{re} et 5^e fois.

2^e et 4^e fois.

D.C.

D.C.

LA SURPRISE DE L'AMOUR

Opéra Comique de POISE.

QUADRILLE pour ORCHESTRE

2^d VIOLON.



1

f

f

CODA.

f

TRIO.

D.C.

2

f

mf

sf

D.C.

3

p

f

CODA.

TRIO.

f V

f V D.C.

4

f V

sf V

D.C.

D.C.

5

p

f 1^e et 5^e fois.

D.C.

f 2^e et 4^e fois.

D.C.

LA SURPRISE DE L'AMOUR

Opéra Comique de POISE.

QUADRILLE pour ORCHESTRE.

ALTO.



1

f

f

CODA.

f

TRIO.

D.C.

2

f

mf

sf

D.C.

3

p

f

D.C.

TRIO.
f

4 *f*

f

5 *p*

1^{re} et 3^e fois.

f

2^e et 4^e fois.

f

LA SURPRISE DE L'AMOUR

Opéra Comique de POISE.

QUADRILLE pour ORCHESTRE.

V^{lle} et C-BASSE.



D.C.

V. CLU-BASSE.

2

3

CODA.

Unis.

4

Vclle et C-BASSE.

Handwritten musical score for Violin and C-Bass. The score consists of several systems of staves. The first system has two staves. The second system has two staves. The third system has two staves. The fourth system has two staves, with a '5' and 'p' marking on the left. The fifth system has two staves. The sixth system has two staves, with '1re et 3 fois.' written above. The seventh system has two staves, with '2e et 4 fois.' written above. The eighth system has two staves. The score includes various musical notations such as notes, rests, slurs, and dynamic markings like 'p' and 'f'. There are also some handwritten annotations and a 'D.C.' marking at the end of the piece.

LA SURPRISE DE L'AMOUR

Opéra Comique de POISE.

QUADRILLE pour ORCHESTRE.

FLÛTE.



1 *f*

CODA.

TRIO.

D.C.

2 *f*

mf *sf* *p* D.C.

5 *p*

CODA.

f

TRIO.

mf

D.C.

4

f

tr

sf

tr

sf

tr

3

b

D.C.

5

f

f

1^e et 3^e fois.

f

2^e et 4^e fois.

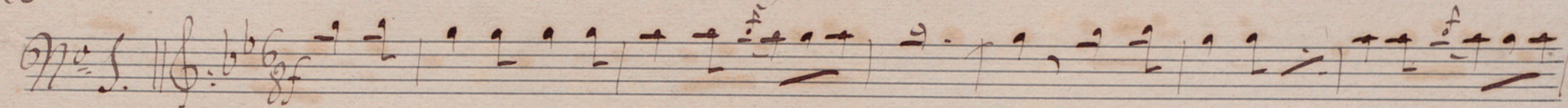
D.C.

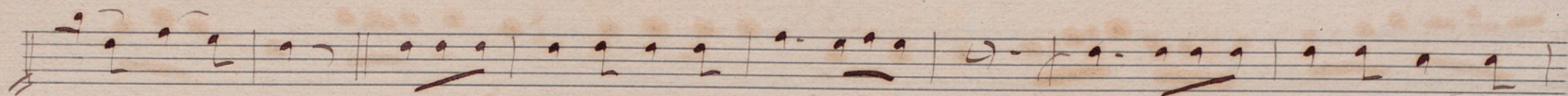
f

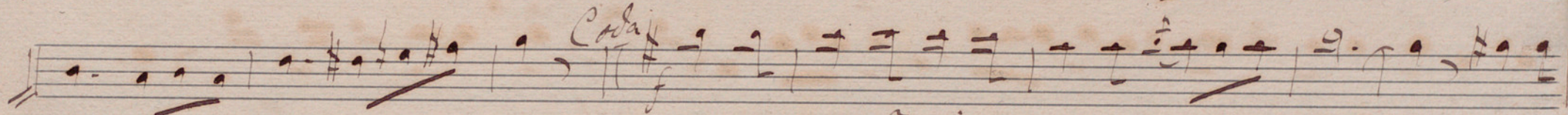
D.C.

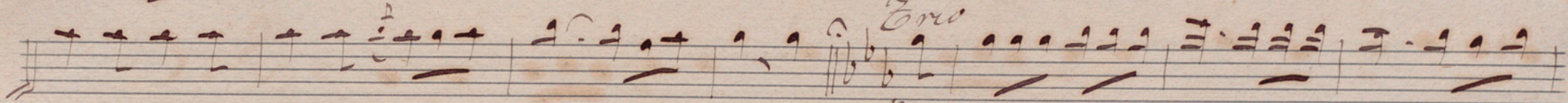
Airban
(En Fa)

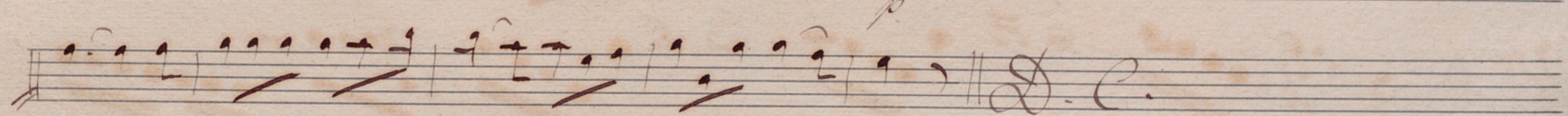
Quadrille // La Surprise de L'amour // Clarinete Solo

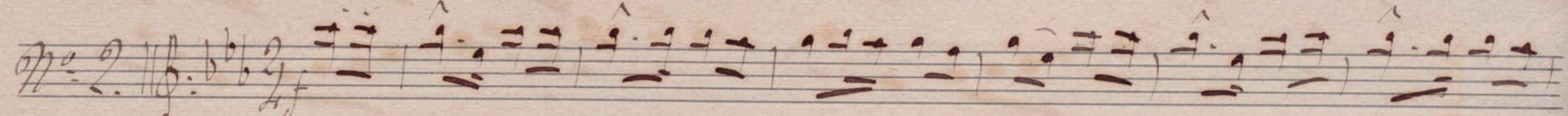
No 1. 

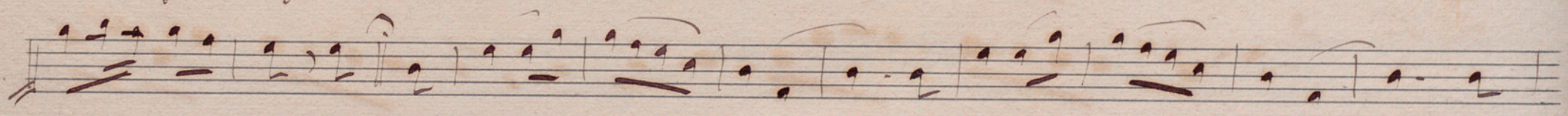


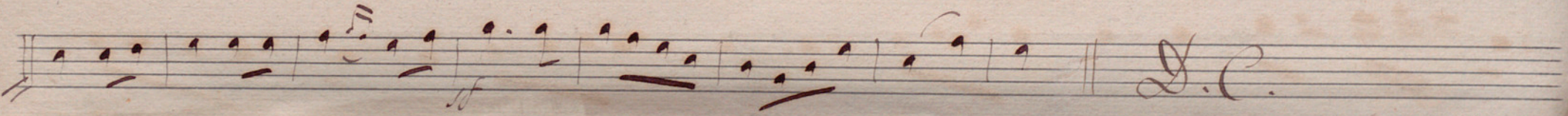






No 2. 







No. 3

Handwritten musical score for No. 3, featuring five staves of music. The notation includes treble clefs, a key signature of two flats (B-flat and E-flat), and a 6/8 time signature. The score contains various musical notations such as notes, rests, and slurs. Dynamic markings include *p* (piano), *f* (forte), and *mf* (mezzo-forte). The word *Coda* is written above the fourth staff. The piece concludes with a double bar line and the initials *D. C.*

No. 4

Handwritten musical score for No. 4, featuring five staves of music. The notation includes treble clefs, a key signature of two flats (B-flat and E-flat), and a 2/4 time signature. The score contains various musical notations such as notes, rests, and slurs. Dynamic markings include *ff* (fortissimo) and *f* (forte). The piece concludes with a double bar line and the initials *D. C.*

No. 5.

Handwritten musical score for No. 5, consisting of seven staves. The first staff begins with a treble clef, a key signature of one flat (B-flat), and a 2/4 time signature. The music is written in a cursive style with various note values, rests, and slurs. The second staff contains the word "Coda" written above the notes. The third staff includes the dynamic marking "f" (forte) and the tempo marking "Allegro". The fourth and fifth staves continue the melodic line. The sixth staff begins with the tempo marking "Allegro" and the dynamic marking "f", and ends with the instruction "D.C." (Da Capo). The seventh staff continues the piece and also ends with "D.C.". The bottom of the page features four empty staves.

LA SURPRISE DE L'AMOUR

Opéra Comique de POISE.

QUADRILLE pour ORCHESTRE.

1^{re} CLARINETTE en LA.



1

2

3

4

5

TRIO.
mf

4 *f* *tr*

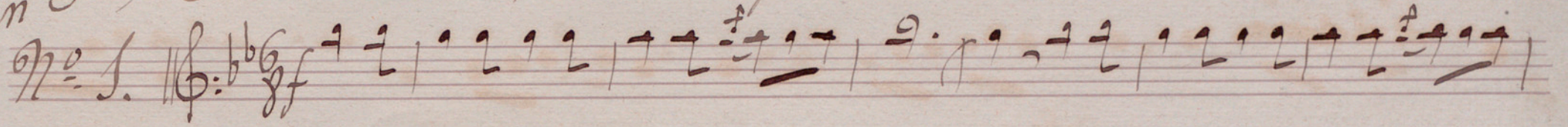
5 *p* *bava*

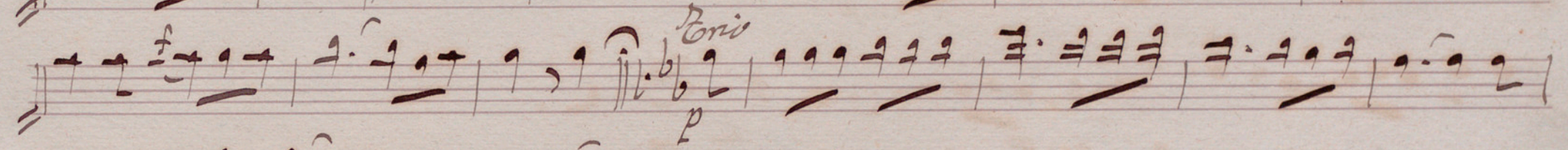
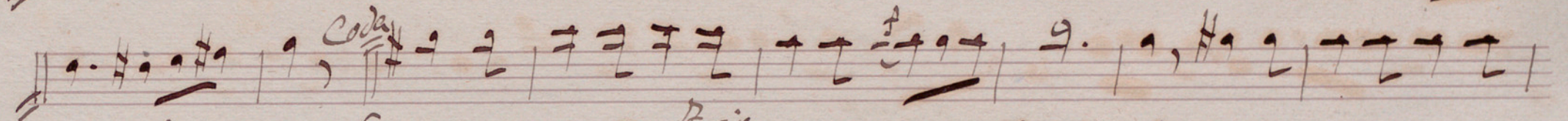
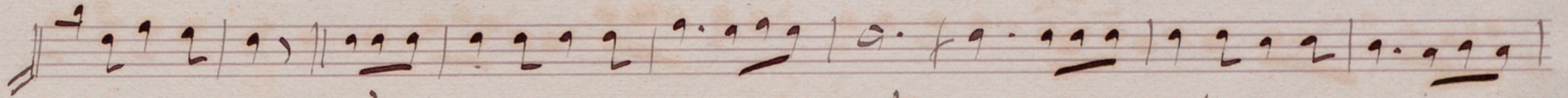
1^{re} et 3^e fois. *f*

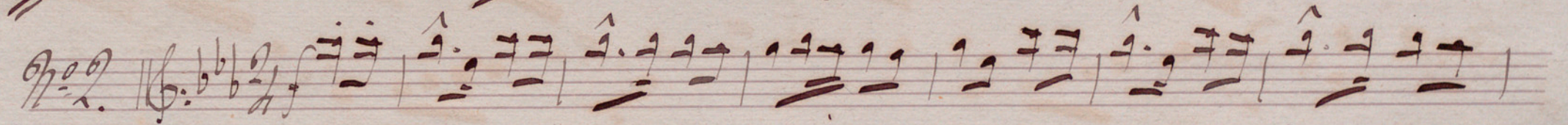
2^e et 4^e fois. *f*

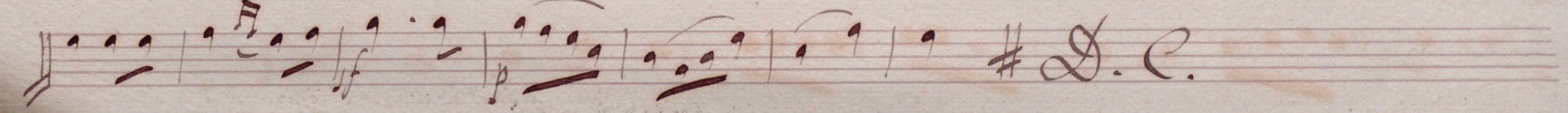
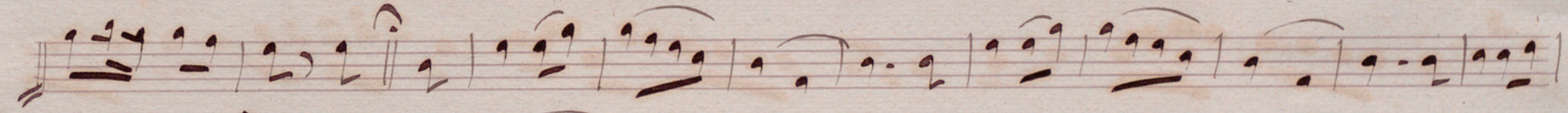
Arban

(En Sol) Quatuor // La Surprise de L'amour // Clarinete 1^o

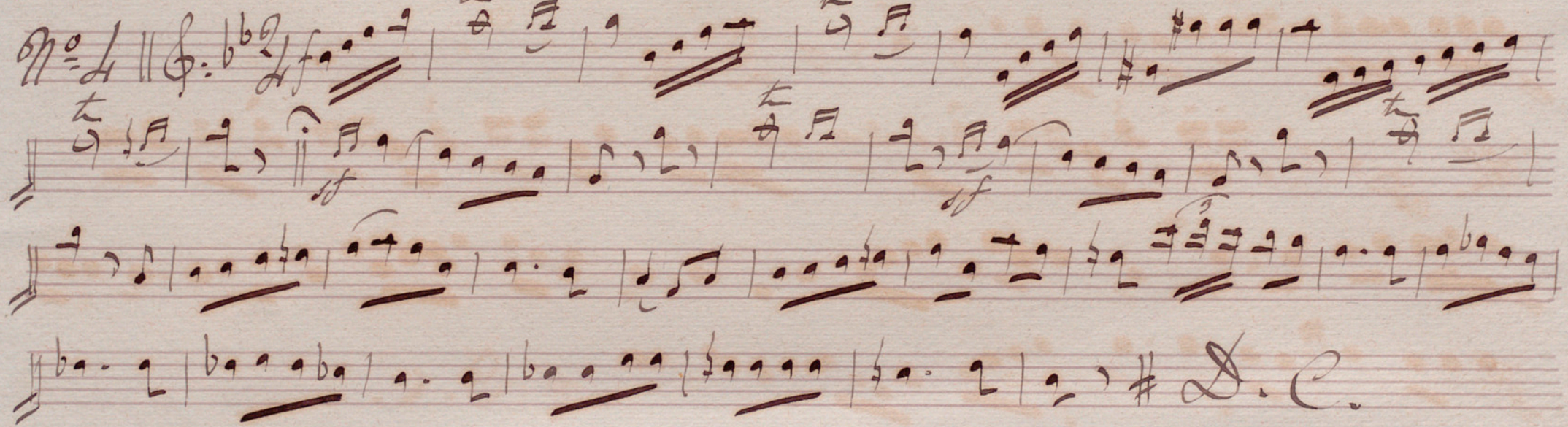
No. 1. 



No. 2. 



No. 3. 





No. 5

Coda

ja ga y sa

f

D. C.

La y La

f

D. C.

LA SURPRISE DE L'AMOUR

Opéra Comique de POISE

QUADRILLE pour ORCHESTRE

2^e CLARINETTE en LA.



1

CODA.

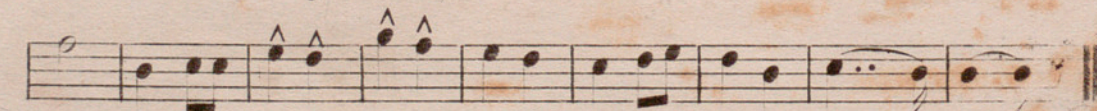
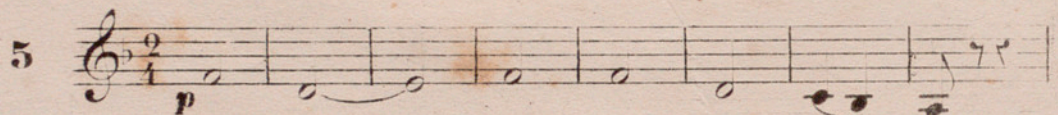
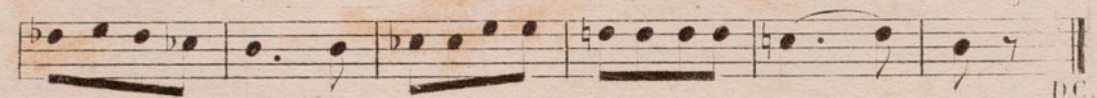
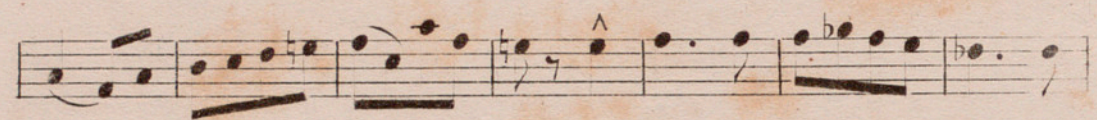
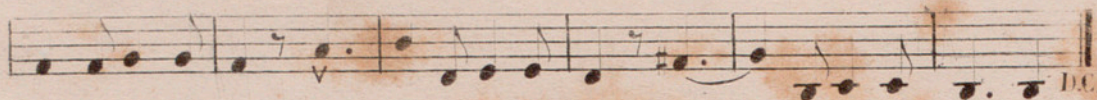
TRIO.

2

3

CODA.

TRIO.



Arban

Rigodon // La surprise de L'amour

Fagot

No. 1.



16.

D.C.

Handwritten musical score, first system. It consists of two staves. The top staff is in treble clef with a key signature of one sharp (F#) and a 2/4 time signature. The bottom staff is in bass clef with a key signature of one sharp (F#). The music features various note values, including quarter and eighth notes, and rests. A dynamic marking *f* is present in the second measure of the bottom staff. The system concludes with a double bar line and a C-clef (C-clef) at the end of the bottom staff.

Handwritten musical score, second system. It consists of two staves. The top staff is in treble clef with a key signature of one sharp (F#) and a 3/8 time signature. The bottom staff is in bass clef with a key signature of one sharp (F#). The music features various note values, including quarter and eighth notes, and rests. A dynamic marking *f* is present in the first measure of the bottom staff. The system concludes with a double bar line and a C-clef (C-clef) at the end of the bottom staff.

Handwritten musical score, third system. It consists of two staves. The top staff is in treble clef with a key signature of one sharp (F#) and a 3/8 time signature. The bottom staff is in bass clef with a key signature of one sharp (F#). The music features various note values, including quarter and eighth notes, and rests. A dynamic marking *f* is present in the first measure of the bottom staff. The system concludes with a double bar line and a C-clef (C-clef) at the end of the bottom staff.

Handwritten musical score, fourth system. It consists of two staves. The top staff is in treble clef with a key signature of one sharp (F#) and a 2/4 time signature. The bottom staff is in bass clef with a key signature of one sharp (F#). The music features various note values, including quarter and eighth notes, and rests. A dynamic marking *f* is present in the first measure of the bottom staff. The system concludes with a double bar line and a C-clef (C-clef) at the end of the bottom staff.

Handwritten musical notation on a single staff, consisting of three measures. The notation includes various rhythmic values and rests.

Handwritten musical notation on a single staff, consisting of six measures. The notation includes various rhythmic values and rests. The word "Coda" is written above the fourth measure.

Handwritten musical notation on a single staff, consisting of three measures. The notation includes various rhythmic values and rests. The word "Coda" is written above the first measure.

LA SURPRISE DE L'AMOUR

Opéra Comique de POISE.

QUADRILLE pour ORCHESTRE.

CORS en FA.



1. Musical staff with treble clef, 6/8 time signature, and dynamic marking *f*.

Musical staff with dynamic marking *f*.

Musical staff with dynamic marking *f* and the word "CODA." above it.

Musical staff with dynamic marking *f* and the word "TRIO." above it.

Musical staff with dynamic marking *f* and the word "D.C." below it.

2. Musical staff with treble clef, 2/4 time signature, and dynamic marking *f*.

Musical staff with dynamic marking *mf*.

Musical staff with dynamic marking *p* and the word "D.C." below it.

3. Musical staff with treble clef, 6/8 time signature.

Musical staff with dynamic marking *f*.

Musical staff with dynamic marking *f* and the word "CODA." above it.

Ma de 2^o

TRIO.

1

D.C.

4

f

f

D.C.

5

p

f

1^{re} et 5^e fois.

f

D.C.

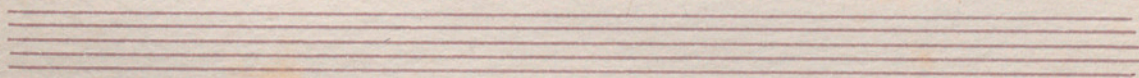
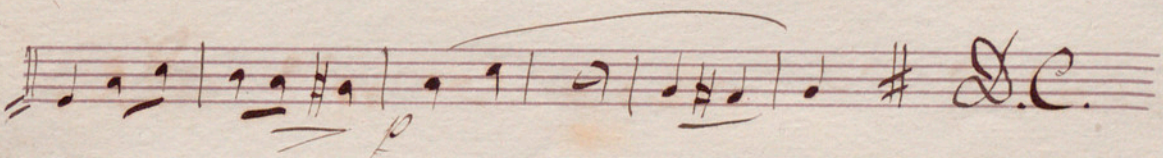
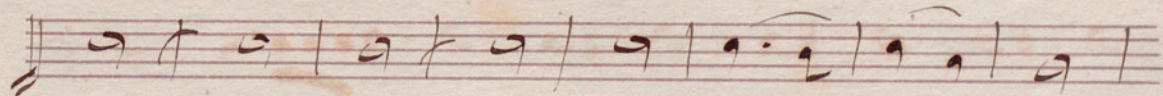
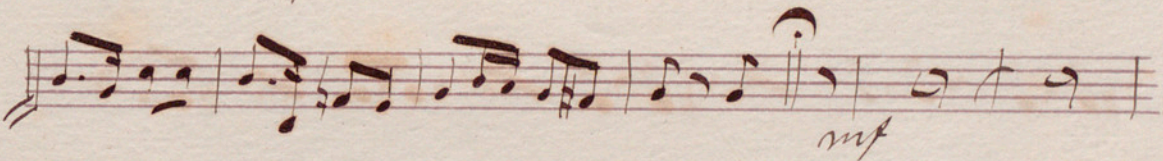
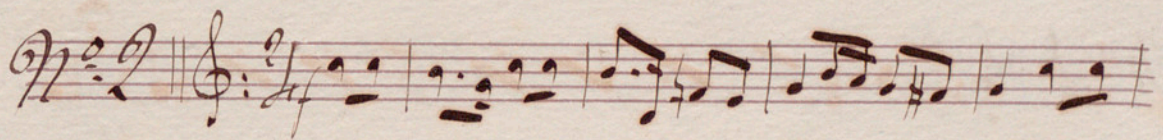
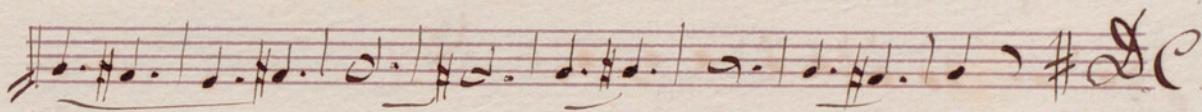
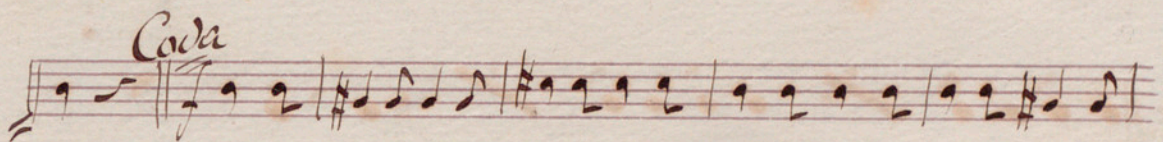
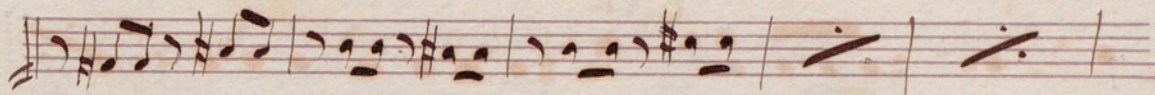
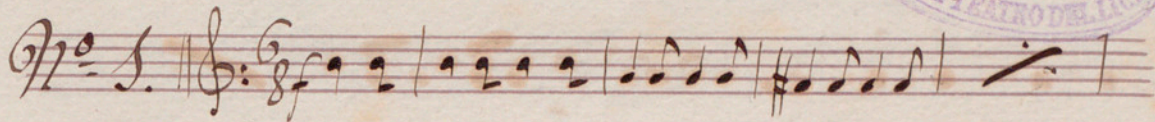
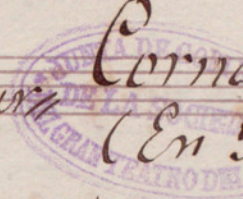
2^e et 4^e fois.

f

D.C.

Arban

Higodon // La Surprise de L'amour // Corno 2^a
(En Fa)



No 3

f

Coda

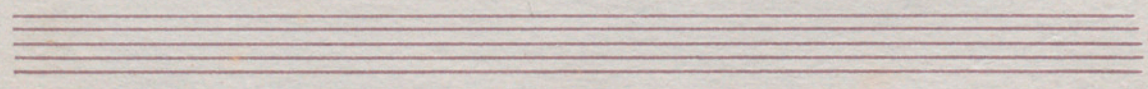
Trio

mf

D.C.

f

D.C.



No 5

Coda

2/4

3/4

2/4

2/4

2/4

2/4

2/4



Arban
(En La)

Quadrille // La Surprise de L'amour //

Cornetin 1^o

Handwritten musical score for Cornetin 1^o. The score is divided into two sections, No. 1 and No. 2, both in 6/8 time and B-flat major.

No. 1 (6/8, B-flat major):
- Starts with a treble clef, a key signature of two flats, and a 6/8 time signature.
- Dynamics include *ff* (fortissimo) and *f* (forte).
- Features a section marked *Coda* and concludes with *D.C.* (Da Capo).
- Includes a section marked *Trio* in the middle.

No. 2 (6/8, B-flat major):
- Starts with a treble clef, a key signature of two flats, and a 6/8 time signature.
- Dynamics include *f* (forte), *mf* (mezzo-forte), and *p* (piano).
- Concludes with *D.C.* (Da Capo).

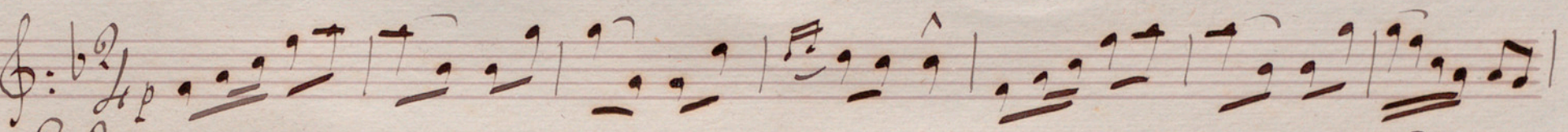
No. 3 || *f* 6/8

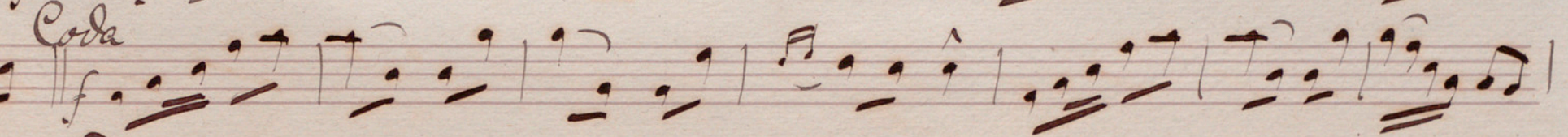
Coda

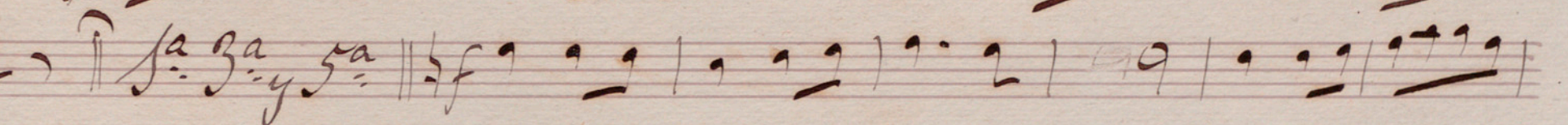
Trio

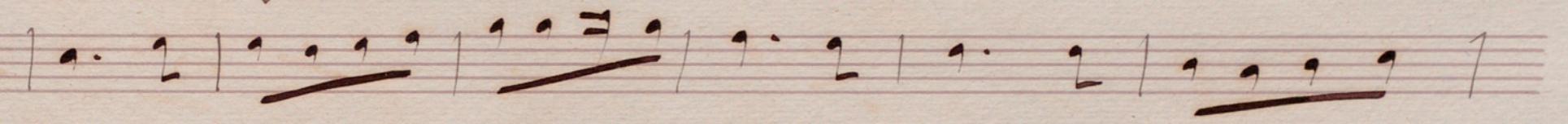
No. 4 || *f* 2/4 *tu*

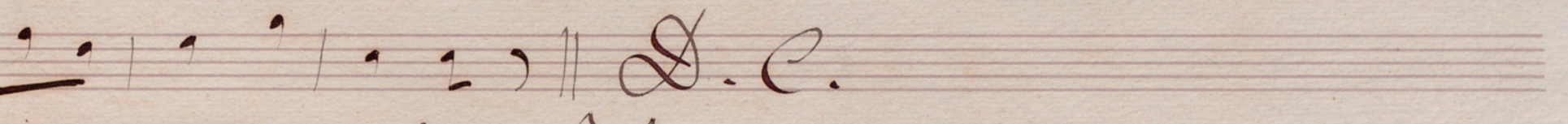
f

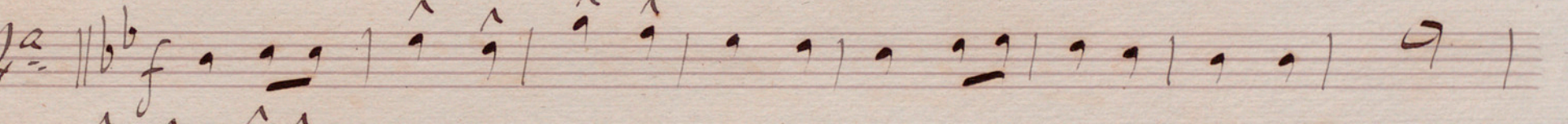
No. 5  *ff*

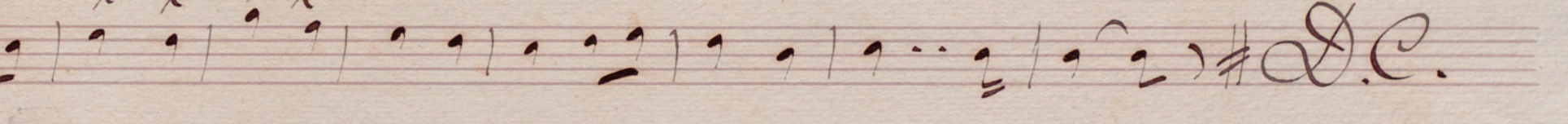
Coda  *ff*


 *ff*

 *ff*

 *ff* *D.C.*

ff 

 *#D.C.*



LA SURPRISE DE L'AMOUR

Opéra Comique de POISE.

QUADRILLE pour ORCHESTRE.

1^{er} PISTON en LA.



ARBAN.

1

2

3

CODA.

TRIO.

D.C.

D.C.

CODA.

TRIO.
mf

D.C.

4

f *tr* *tr* *sf* *sf*

D.C.

5

p *f* *Cadenza*

1^{re} et 5^e fois.

2^e et 4^e fois.

D.C. *f*

D.C.

LA SURPRISE DE L'AMOUR

Opéra Comique de POISE.

QUADRILLE pour ORCHESTRE.

ARBAN.

2^e PISTON en LA.



1 



CODA. 

TRIO. 

2 

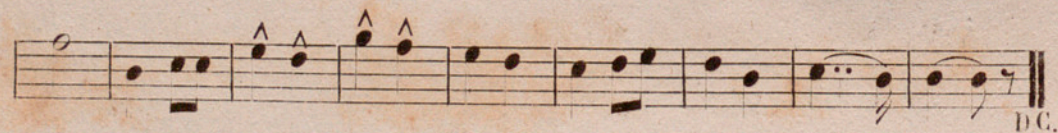
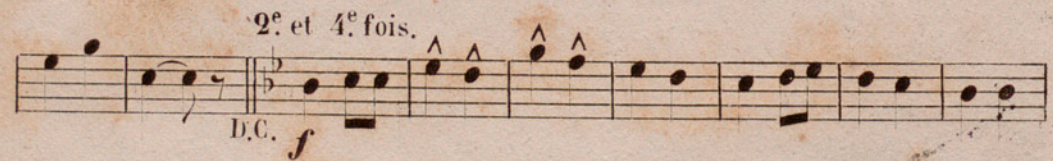
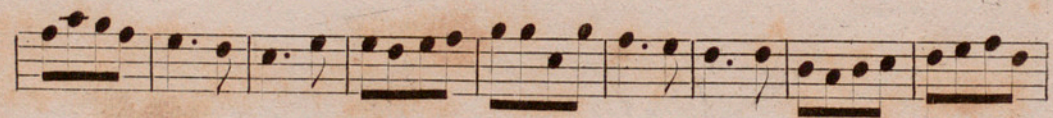
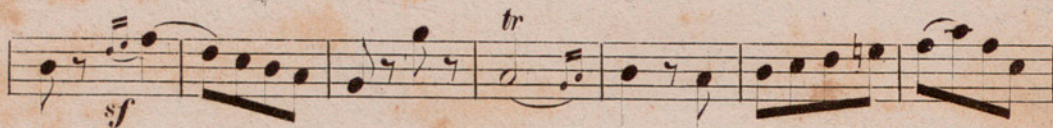
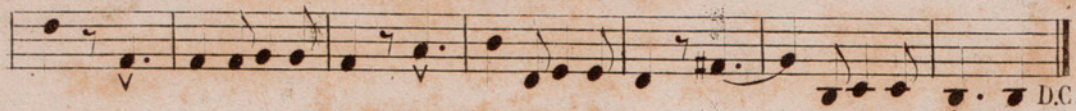




3 







LA SURPRISE DE L'AMOUR

Opéra Comique de POISE.

QUADRILLE pour ORCHESTRE.

1^{er} et 2^e TROMBONES.



1

f

f

CODA.

f

TRIO.

7

D.C.

2

f

mf

f *p*

D.C.

3

7

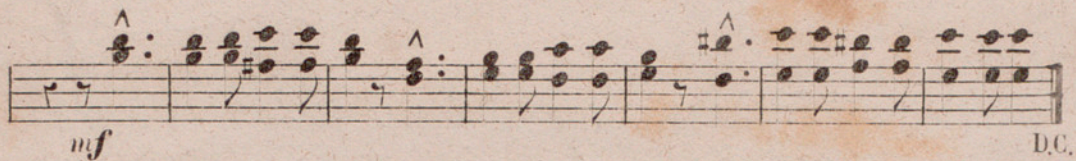
f

CODA.

TRIO.

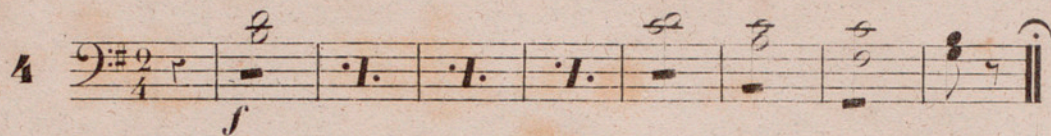
1

mf D.C.




A musical staff in treble clef with a key signature of one sharp (F#) and a 9/4 time signature. It contains several measures of chords, some with an accent (^) above them. The dynamics are marked *mf* and *f*. The piece ends with a double bar line and the instruction *D.C.*

4 *f*

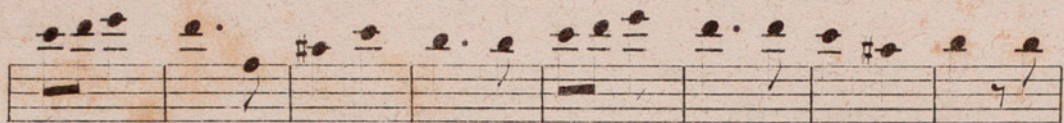


A musical staff in bass clef with a key signature of one sharp (F#) and a 9/4 time signature. It contains several measures of chords, some with a fermata above them. The dynamics are marked *f*. The piece ends with a double bar line and a repeat sign.

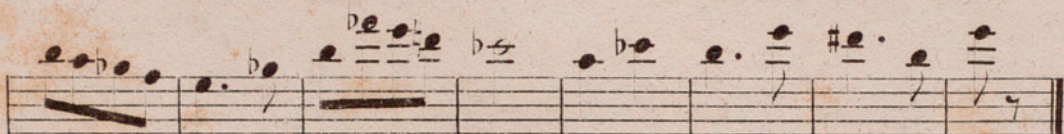
à 2.



A musical staff in treble clef with a key signature of one sharp (F#) and a 9/4 time signature. It contains several measures of chords, some with slurs and accents. The dynamics are marked *f*. The piece ends with a double bar line and a repeat sign.



A musical staff in treble clef with a key signature of one sharp (F#) and a 9/4 time signature. It contains several measures of chords, some with slurs and accents. The dynamics are marked *f*. The piece ends with a double bar line and a repeat sign.



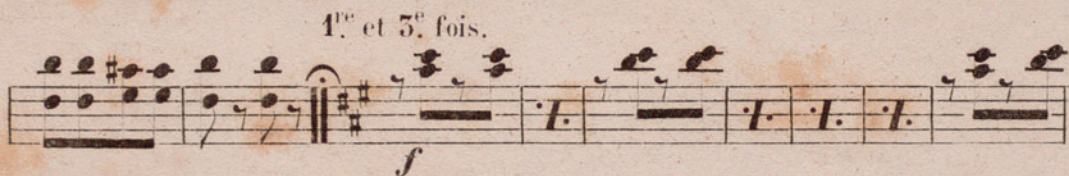
A musical staff in treble clef with a key signature of one sharp (F#) and a 9/4 time signature. It contains several measures of chords, some with slurs and accents. The dynamics are marked *f*. The piece ends with a double bar line and a repeat sign.

5 *f* D.C.

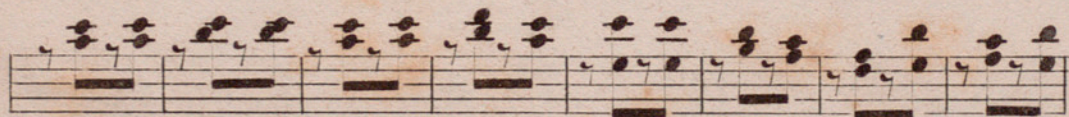


A musical staff in bass clef with a key signature of one sharp (F#) and a 9/4 time signature. It contains several measures of chords, some with slurs and accents. The dynamics are marked *f*. A handwritten signature is written over the staff. The piece ends with a double bar line and the instruction *D.C.*

1^{re} et 5^e fois. *f*

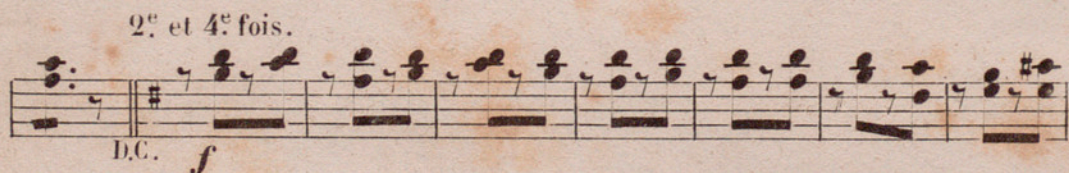


A musical staff in treble clef with a key signature of one sharp (F#) and a 9/4 time signature. It contains several measures of chords, some with slurs and accents. The dynamics are marked *f*. The piece ends with a double bar line and a repeat sign.

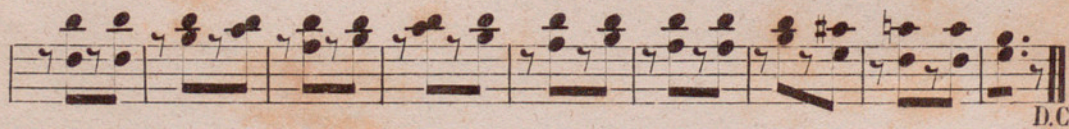


A musical staff in treble clef with a key signature of one sharp (F#) and a 9/4 time signature. It contains several measures of chords, some with slurs and accents. The dynamics are marked *f*. The piece ends with a double bar line and a repeat sign.

2^e et 4^e fois. *f* D.C.



A musical staff in treble clef with a key signature of one sharp (F#) and a 9/4 time signature. It contains several measures of chords, some with slurs and accents. The dynamics are marked *f*. The piece ends with a double bar line and the instruction *D.C.*



A musical staff in treble clef with a key signature of one sharp (F#) and a 9/4 time signature. It contains several measures of chords, some with slurs and accents. The dynamics are marked *f*. The piece ends with a double bar line and a repeat sign.

LA SURPRISE DE L'AMOUR.

Opéra Comique de POISE.

QUADRILLE pour ORCHESTRE

5^e TROMBONE.



1 *f*

f

CODA.

f

TRIO. 7

D.C.

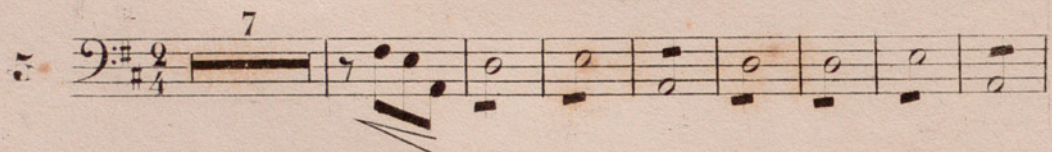
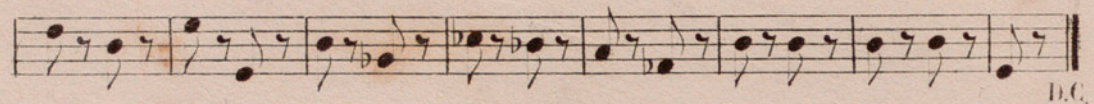
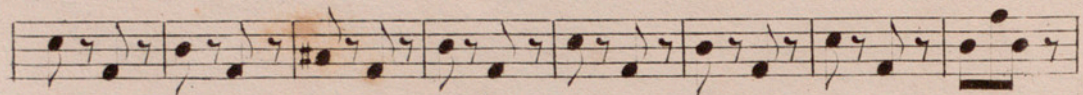
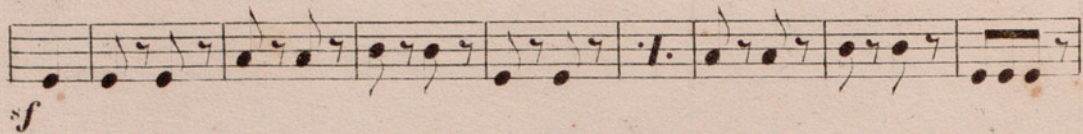
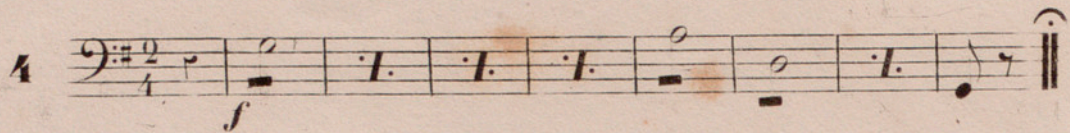
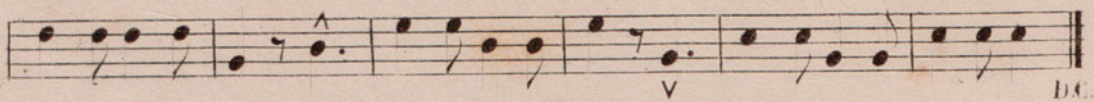
2 *f*

mf *f* *p* D.C.

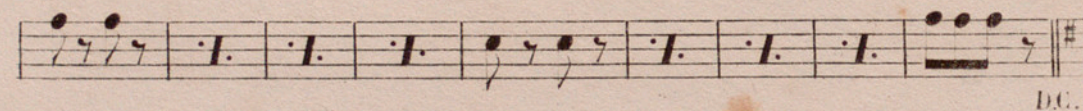
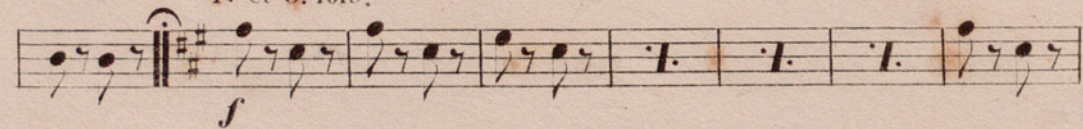
5. *f*

CODA.

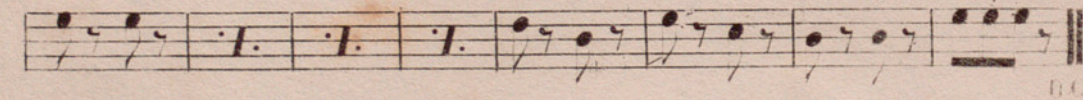
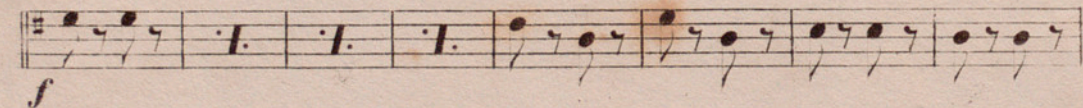
 TRIO. 1 *mf*



4^e et 5^e fois.



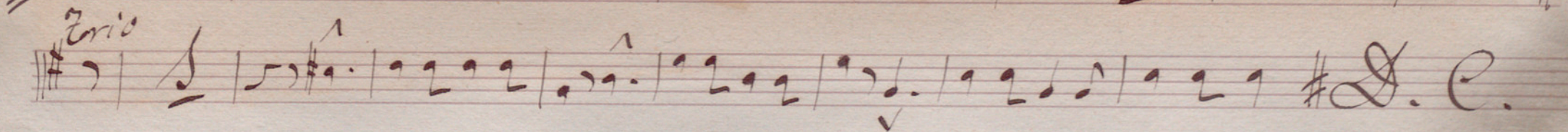
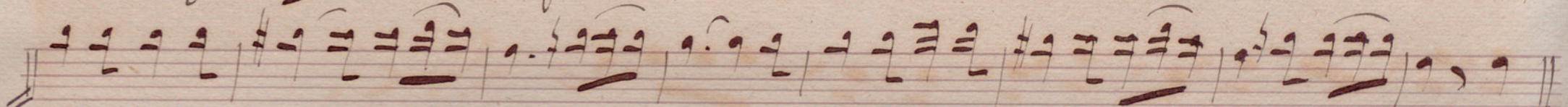
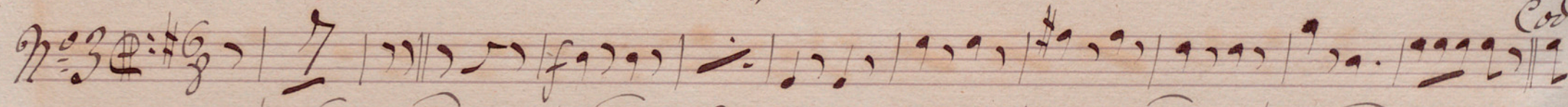
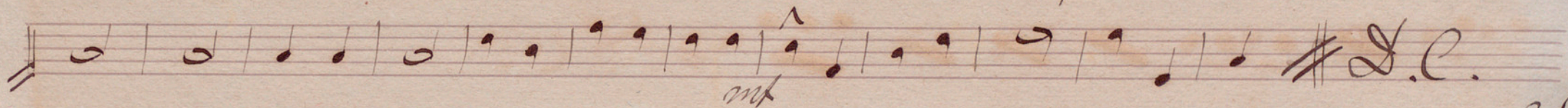
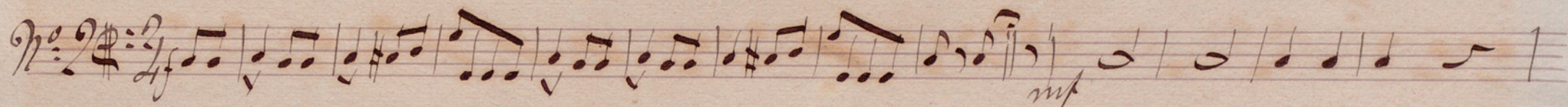
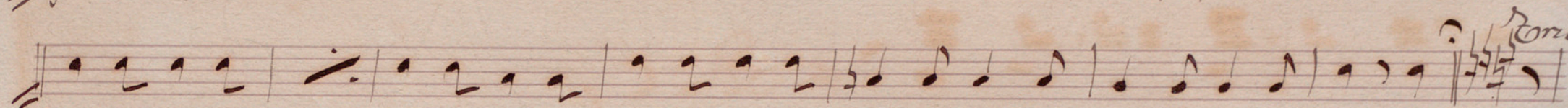
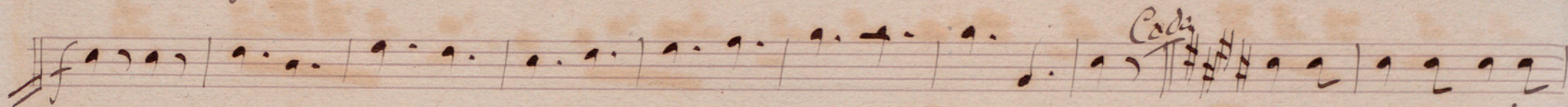
2^e et 4^e fois.



Arban

Quadrille // La Surprise de L'amour.

Tricorno



No. 4

D. C.

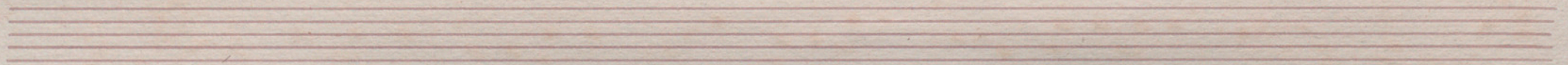
No. 5

Coda

D. C.

2^a y 4^a

D. C.



LA SURPRISE DE L'AMOUR.

Opéra Comique de POISE.

QUADRILLE pour ORCHESTRE.

OPHICLÉIDE.



1

f

f

CODA.

f

TRIO. 4

p D.C.

2

f

mf

f p D.C.

5

f

CODA.

f

TRIO. 1

f

mf

D.C.

4

f

D.C.

5

7

Cello

4^{re} et 3^{es} fois.

D.C.

2^e et 4^e fois.

f

D.C.

LA SURPRISE DE L'AMOUR

Opéra Comique de POISE.

QUADRILLE pour ORCHESTRE

TAMBOUR.



1 *f* 6/8 1 2 3 4 5 CODA.

2 *f* 9/4 10 2 D.C.

3 Triangle. *p* *f* Tambour. 1 2 3 4 5 6 7 CODA. *f*

4 *f* 2/4 3 19 D.C.

5 7 1^{re} et 3^e fois. 1 2 3 4 5 6 7 8 9^e et 4^e fois. 1 2 3 4 D.C. 5 6 7 8 9 10 11 12 13 14 15 D.C.

LA SURPRISE DE L'AMOUR

Opéra Comique de POISE.

QUADRILLE pour ORCHESTRE

GROSSE CAISSE.



1 *f* 1 2 3 4 5 6 7

1 2 3 4 5 6 7 CODA. 1 2 *f*

3 4 5 6 7 TRIO. 7 D.C.

2 *f* 11 5 D.C.

3 7 1 2 3 4 5 6 *f*

CODA. 1 2 3 4 5 6 7

TRIO. 1 1 1 *mf* D.C.

4 1 2 3 4 5 6 *f* 7 5 19 D.C.

5 8 1 2 3 4 5 6 7

1^{re} et 5^e fois. *f* 1 2 3 4 5 6 7 8 9

10 11 12 13 14 15 2^e et 4^e fois. 1 2 3

4 5 6 7 8 9 10 11 12 13 14 15 D.C.