

LE DIMANCHE DU SONNEUR.

MOTIFS D'ETIENNE ARNAUD.

PAR MUSARD.

(ALBUM 1847)

VIOLON conducteur.

N° 1.  
PANTALON.

*f*

*f*

*f* CODA

*p*

*f*

2

LES TROIS FIANCÉES.

N° 2.  
TÉ.

*f*

*p*

D.C.

Paris AU MÈNESTREL Rue vivienne 2 bis. H 1062 Maison A. MEISSONNIER HEUGEL Suc<sup>r</sup>

3

57485-1

VIOLON conducteur.

LA FONTAINE AUX PERLES.

N<sup>o</sup> 5.  
POULE.

CODA.

TON REGARD.

N<sup>o</sup> 4.  
PASTOURELLE.

VIOLON conducteur.

LE DIMANCHE DU SONNEUR.

CLOCHES Flute.

N° 5.

FINALE.

LE DIMANCHE DU SONNEUR.

PAR MUSARD.

2<sup>e</sup> VIOLON.

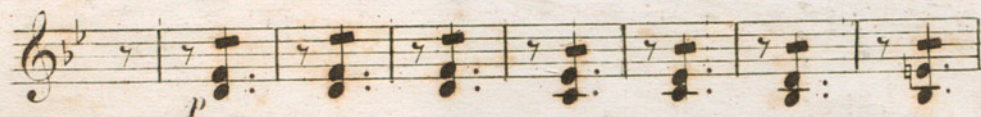
N<sup>o</sup> 1. 

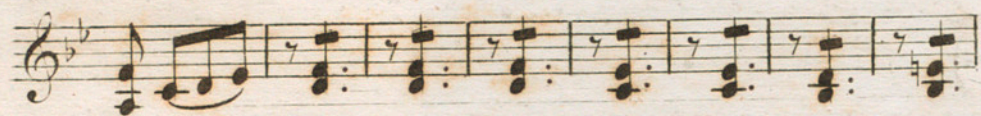
N<sup>o</sup> 2. 

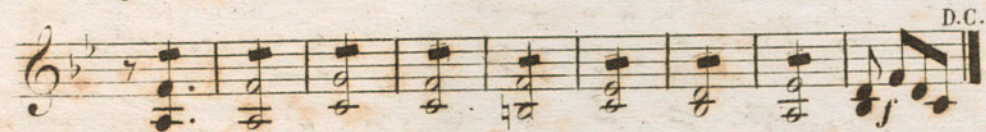
N<sup>o</sup> 5. 

2<sup>e</sup> VIOLON.

N<sup>o</sup> 4. 



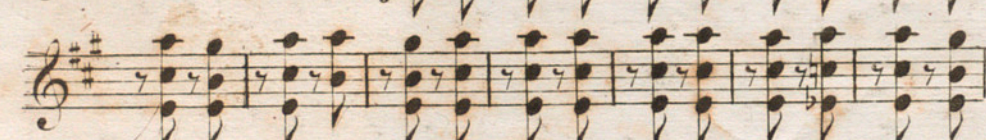


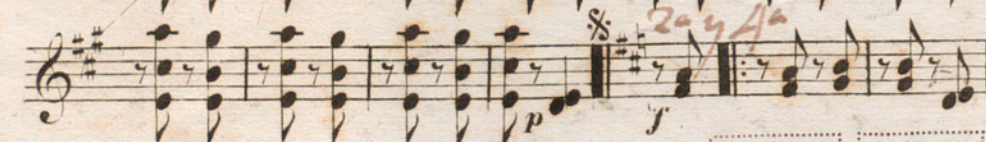


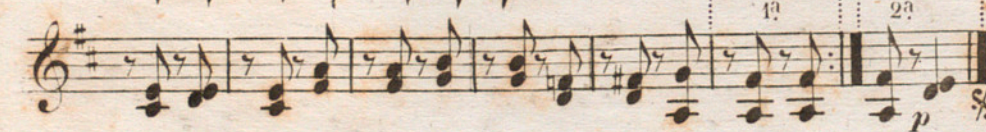
N<sup>o</sup> 5. 

*cadu*  


*p<sup>e</sup> finir* *1<sup>e</sup> et 3<sup>e</sup> fois.*  

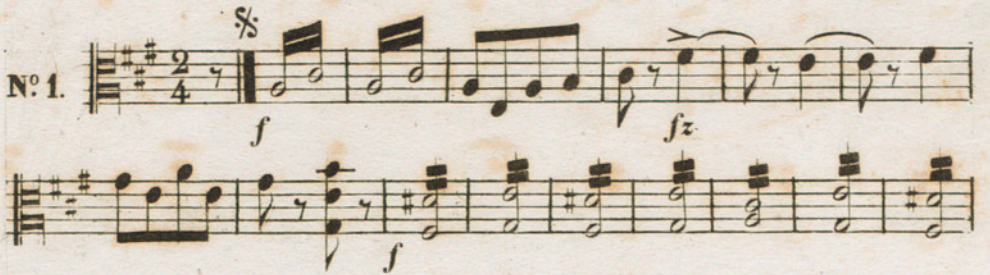
*2<sup>a</sup> y<sup>a</sup>*  




LE DIMANCHE DU SONEUR.

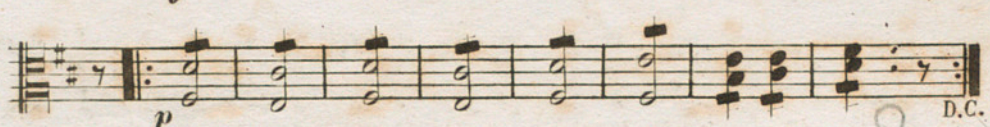
PAR MUSARD.

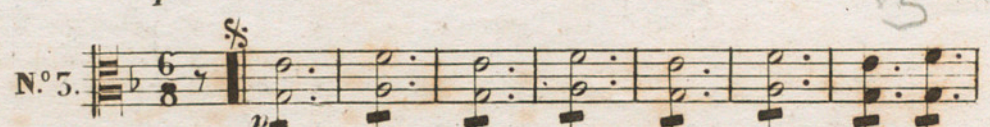
ALTO.

N° 1. 

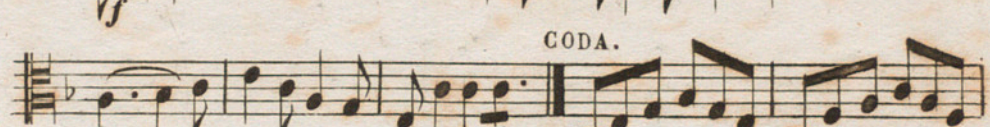




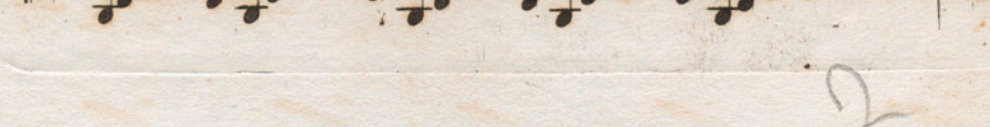


N° 2. 













ALTO.

Musical staff with notes and a dynamic marking *p*. Ends with a double bar line and a repeat sign.

N° 4. Musical staff with notes and a dynamic marking *f*. Ends with a double bar line and a repeat sign.

Musical staff with notes and a dynamic marking *p*. Ends with a double bar line and a repeat sign.

Musical staff with notes and a dynamic marking *p*. Ends with a double bar line and a repeat sign.

Musical staff with notes and a dynamic marking *f*. Ends with a double bar line and a repeat sign. Includes the marking "DC".

3

N° 5. Musical staff with notes and dynamic markings *p*. Ends with a double bar line and a repeat sign.

Musical staff with notes and a dynamic marking *f*. Includes the handwritten word "Coda" above the staff.

Musical staff with notes and a dynamic marking *f*. Includes the instruction "1<sup>e</sup> et 5<sup>e</sup> fois." and a box containing "p<sup>r</sup> finir".

Musical staff with notes and a dynamic marking *f*. Includes the instruction "2<sup>e</sup> et 5<sup>e</sup> fois." below the staff.

Musical staff with notes and dynamic markings *p* and *f*. Includes the instruction "2<sup>e</sup> et 5<sup>e</sup> fois." below the staff.

Musical staff with notes and dynamic markings *p*. Includes the instructions "1<sup>a</sup>" and "2<sup>a</sup>" above the staff.

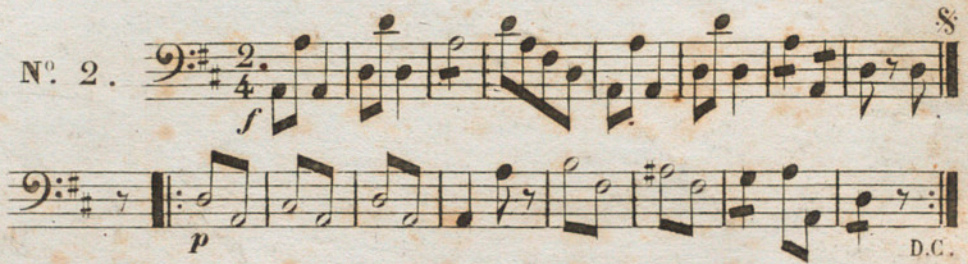
2

LE DIMANCHE DU SONNEUR.

PAR MUSARD.

VIOLONCELLE et C. BASSE.

N<sup>o</sup> 1. 

N<sup>o</sup> 2. 

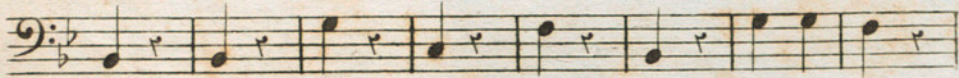
N<sup>o</sup> 3. 



VIOLONCELLE et C. BASSE.

N<sup>o</sup> 4. 

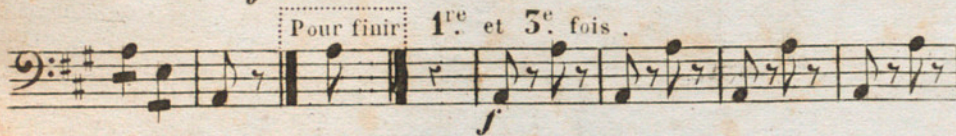


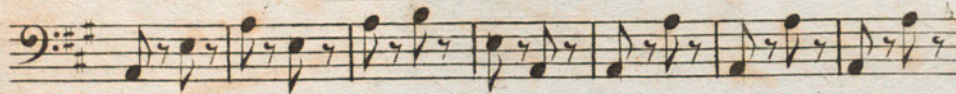


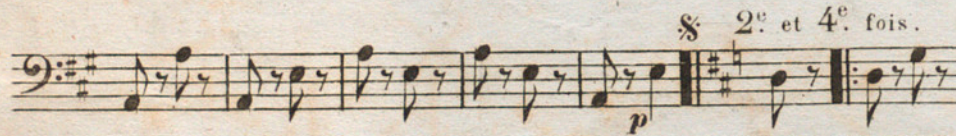


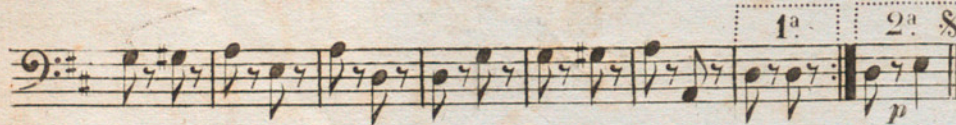
N<sup>o</sup> 5. 











LE DIMANCHE DU SONNEUR.

PAR MUSARD.

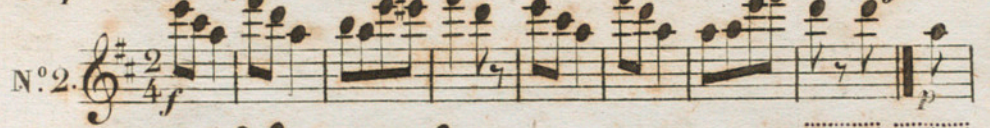
FLÛTE

N° 1. 



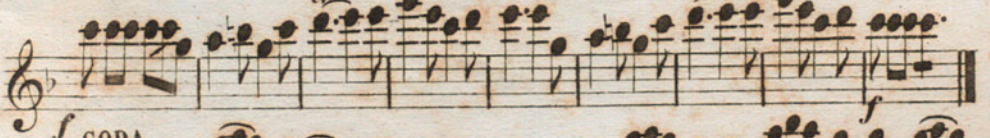
CODA 

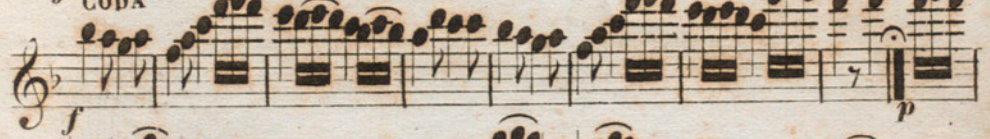


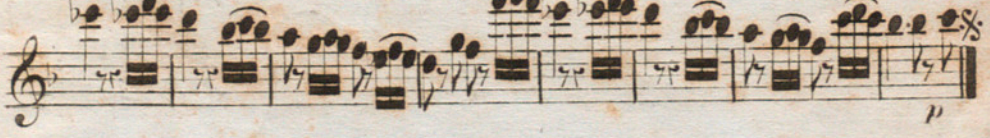
N° 2. 



N° 5. 







FLÛTE

N° 4.

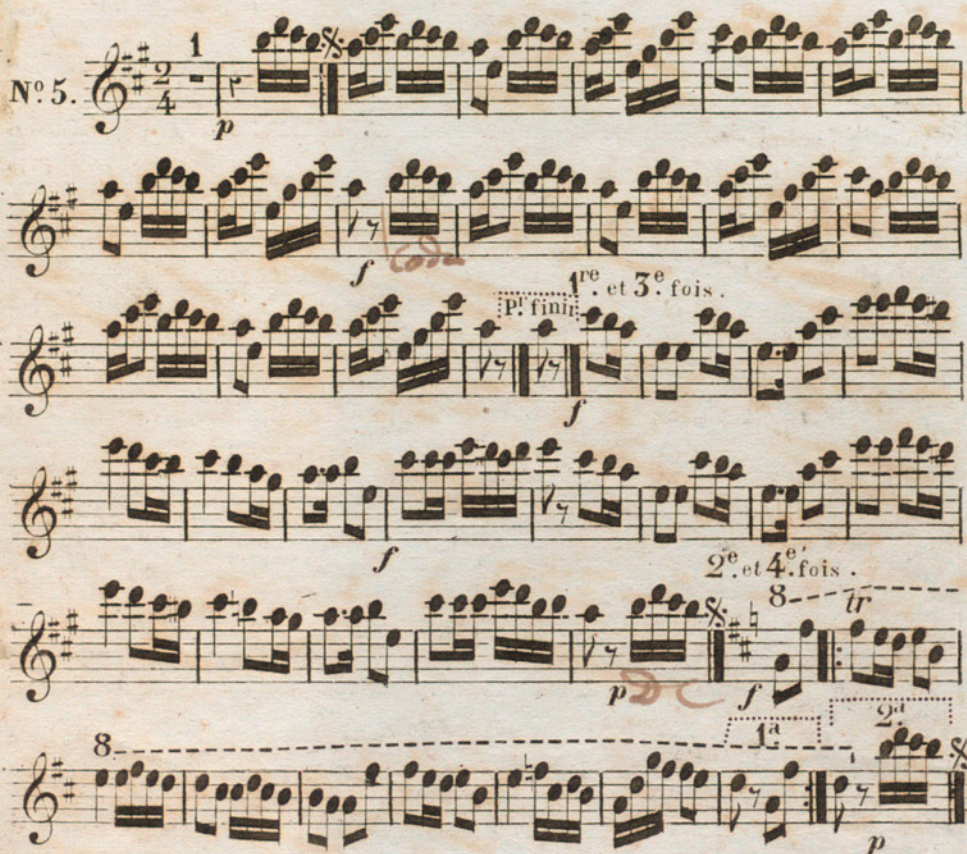


*f*

*p*

D.C.

N° 5.



*p*

*f*

*p*

*f*

*p*

*f*

*p*

1

1<sup>re</sup> et 3<sup>e</sup> fois.

P. finit

2<sup>e</sup> et 4<sup>e</sup> fois.

8

tr

8

1<sup>a</sup>

2<sup>a</sup>

LE DIMANCHE DU SONNEUR.

PAR MUSARD.

HAUTBOIS.

N<sup>o</sup> 1.

N<sup>o</sup> 2.

N<sup>o</sup> 5.

HAUTBOIS.

Musical staff with treble clef, key signature of one flat, and a melodic line with slurs and accents.

N° 4. *f*

*p* Musical staff with treble clef, key signature of one flat, and a melodic line starting with a piano dynamic.

Musical staff with treble clef, key signature of one flat, and a melodic line.

Musical staff with treble clef, key signature of one flat, and a melodic line ending with D.C.

N° 5. *f*

Musical staff with treble clef, key signature of two sharps, and a chordal accompaniment.

Musical staff with treble clef, key signature of two sharps, and a chordal accompaniment.

Musical staff with treble clef, key signature of two sharps, and a chordal accompaniment.

Musical staff with treble clef, key signature of two sharps, and a chordal accompaniment.

Musical staff with treble clef, key signature of two sharps, and a chordal accompaniment.

2. Second

LE DIMANCHE DU SONNEUR.

PAR MUSARD.

CLARINETTES.

En LA. §

N<sup>o</sup> 1.  $\frac{2}{4}$  *f* *fz*

CODA.

En UT. *f* *fz* *tr* *tr* *1<sup>re</sup>* *p*

5<sup>e</sup> et 4<sup>e</sup> fois. *1<sup>re</sup>* *2<sup>a</sup>* D.C.

En UT. § *p*

N<sup>o</sup> 3.  $\frac{6}{8}$  *p*

CODA. *f*

*p* *p*

CLARINETTES.

En SI ..

N<sup>o</sup> 4.

Musical score for No. 4, Clarinettes, in G major (En SI). It consists of four staves. The first staff is a bass line starting with a forte (f) dynamic. The second and third staves are treble clefs with a piano (p) dynamic. The fourth staff ends with a double bar line and 'D.C.' (Da Capo).

N<sup>o</sup> 5.

En LA.

Musical score for No. 5, Clarinettes, in F major (En LA). It consists of eight staves. The first staff is a treble clef with a piano (p) dynamic. The second and third staves are bass clefs. The fourth and fifth staves are treble clefs. The sixth and seventh staves are bass clefs. The eighth staff is a treble clef. The score includes various dynamics (f, p), repeat signs, and handwritten annotations like 'col', 'fin', and '1re et 2e'.

LE DIMANCHE DU SONNEUR.

PAR MUSARD.

BASSONS.

N<sup>o</sup>1. 

CODA



N<sup>o</sup>2. 

N<sup>o</sup>3. 

CODA



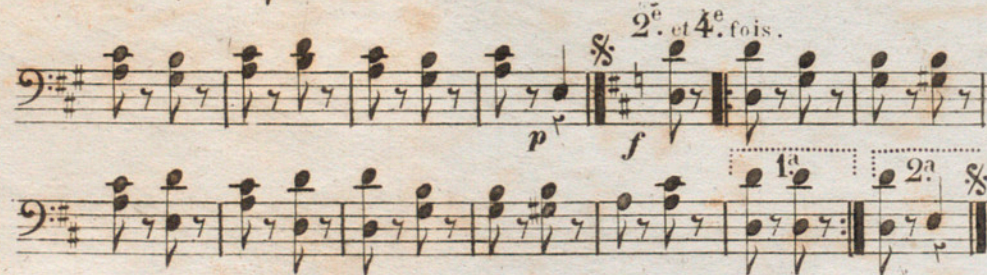


BASSONS.

N°4. 

N°5. 

*1<sup>e</sup>. et 3<sup>e</sup>. fois.* 

*2<sup>e</sup>. et 4<sup>e</sup>. fois.* 

LE DIMANCHE DU SONNEUR.

PAR MUSARD.

1<sup>er</sup> et 2<sup>e</sup> CORN.

N<sup>o</sup> 1. En LA. %

*f* *fz*

*f*

CODA.

*fz*

6 *p*

N<sup>o</sup> 2. En LA.

*f*

16

D.C.

N<sup>o</sup> 5. En FA. % 7

*f*

CODA

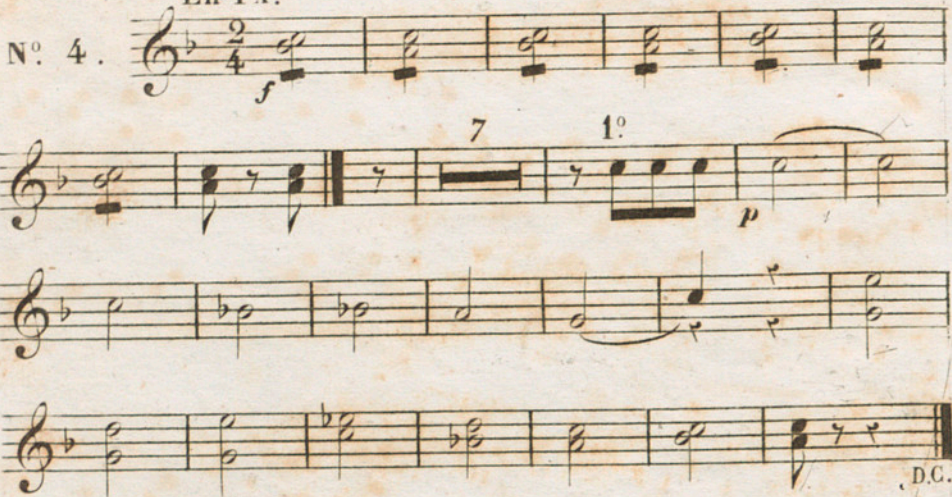
1<sup>o</sup> Solo.

*p*

1<sup>er</sup> et 2<sup>e</sup> CORS.

En FA.

N<sup>o</sup> 4.



*f*

7 1<sup>o</sup> *p*

D.C.

En LA.

N<sup>o</sup> 5.



*p*

§

Pour finir 1<sup>re</sup> et 3<sup>e</sup> fois. *f*

§ 2<sup>e</sup> et 4<sup>e</sup> fois. *f*

1<sup>a</sup> 2<sup>a</sup> §

LE DIMANCHE DU SONNEUR

PAR MUSARD.

5<sup>e</sup> et 4<sup>e</sup> CORS.

N<sup>o</sup> 1. En RE. §

1

CODA.

1

2 1<sup>e</sup> 2

*p*

N<sup>o</sup> 2. En RE.

16 D.C.

N<sup>o</sup> 3. En UT. § 1<sup>e</sup>

1<sup>e</sup>

*p*

CODA.

8 §

5<sup>e</sup> et 4<sup>e</sup> CORS.

En SI $\flat$ .

N<sup>o</sup> 4.

Musical score for No. 4, 2/4 time signature. The first staff begins with a forte (*f*) dynamic and contains six measures of chords. The second staff contains two measures of chords, followed by a double bar line, a measure with a fermata, and a measure with a piano (*p*) dynamic. A measure number '16' is written above the second staff. The third staff contains five measures of chords, ending with a double bar line and the instruction 'D.C.'.

N<sup>o</sup> 5.

En RE $\acute$ .

Musical score for No. 5, 2/4 time signature. The first staff begins with a piano (*p*) dynamic and contains eight measures of chords, with a double bar line and a repeat sign after the fourth measure. The second staff contains eight measures of chords, with a forte (*f*) dynamic and a handwritten 'Coda' in red ink above the fourth measure. The third staff contains eight measures of chords, with a forte (*f*) dynamic and a double bar line after the fourth measure. Above the double bar line is the instruction 'pffinir. 1<sup>e</sup> et 3<sup>e</sup> fois.' The fourth staff contains eight measures of chords, with a forte (*f*) dynamic. The fifth staff contains eight measures of chords, with a piano (*p*) dynamic and a double bar line after the fourth measure. Above the double bar line is the instruction '2<sup>e</sup> et 4<sup>e</sup> fois.' The sixth staff contains eight measures of chords, with a piano (*p*) dynamic and a double bar line after the fourth measure. Above the double bar line are the instructions '1<sup>a</sup>' and '2<sup>a</sup>' in separate boxes, followed by a double bar line and a repeat sign.

1-  
422

LE DIMANCHE DU SONNEUR.

PAR MUSARD.

1<sup>er</sup> et 2<sup>d</sup>. PISTONS.

N<sup>o</sup> 1. *en LA*

en LA

2/4

*f*

*fz*

*f* CODA

8

This piece is in 2/4 time, key of A major. It begins with a treble clef and a key signature of one sharp (F#). The first staff starts with a forte (*f*) dynamic and a section marked with a double bar line and a repeat sign. The second staff continues with a forte (*f*) dynamic. The third staff features a section marked 'CODA' with a forte (*f*) dynamic. The piece concludes with a final measure marked with a double bar line and a repeat sign, with the number '8' written above it.

N<sup>o</sup> 2. *en LA*

en LA

2/4

*f*

*p*

2<sup>e</sup> fois.

1<sup>a</sup> 2<sup>a</sup> D.C.

This piece is in 2/4 time, key of A major. It begins with a treble clef and a key signature of one sharp (F#). The first staff starts with a forte (*f*) dynamic and includes a first ending bracket labeled '2' and a second ending bracket labeled '2<sup>e</sup> fois.'. The second staff continues with a piano (*p*) dynamic. The piece concludes with a first ending bracket labeled '1<sup>a</sup>' and a second ending bracket labeled '2<sup>a</sup> D.C.'.

N<sup>o</sup> 3. *en SI b*

en SI b

6/8

*p*

*f*

*f* CODA

7

This piece is in 6/8 time, key of A minor. It begins with a treble clef and a key signature of two flats (Bb, Eb). The first staff starts with a piano (*p*) dynamic. The second staff continues with a forte (*f*) dynamic. The third staff features a section marked 'CODA' with a forte (*f*) dynamic. The piece concludes with a final measure marked with a double bar line and a repeat sign, with the number '7' written above it.

1<sup>er</sup> et 2<sup>d</sup>. PISTONS.

N<sup>o</sup> 4. en SI<sup>b</sup> a 2.  
*f* 244  
D.C.

N<sup>o</sup> 5. en LA 1  
*p* §  
P<sup>o</sup> finir 2<sup>e</sup> et 5<sup>e</sup> fois  
*f* §

2<sup>e</sup> et 4<sup>e</sup> fois.  
*f* tr §  
*p* tr §

LE DIMANCHE DU SONNEUR.

PAR MUSARD.

TROMPETTES.

N<sup>o</sup> 1. *En RÉ.*  $\frac{2}{4}$  *f* *sz* 1

*sz* CODA. 1 8  $\frac{2}{4}$  *f*

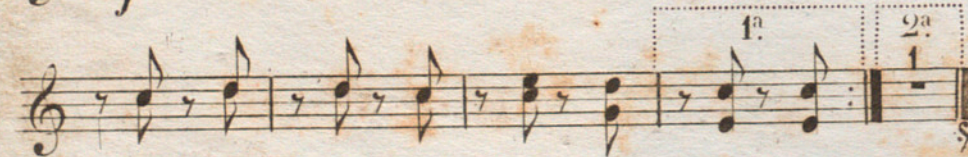
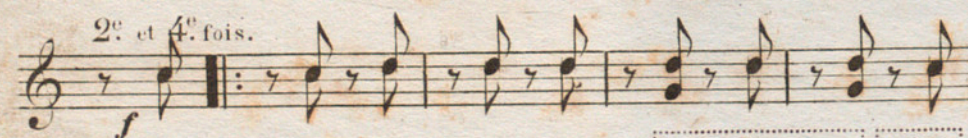
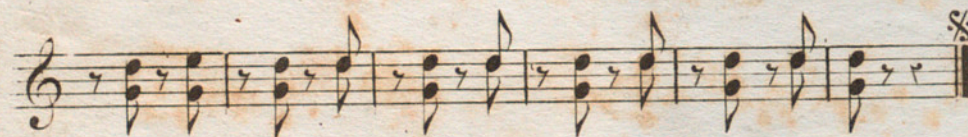
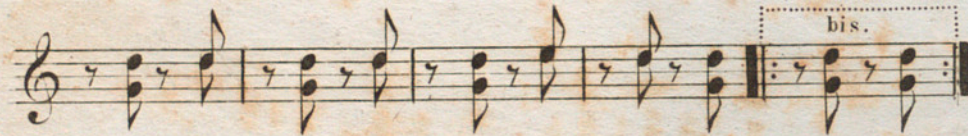
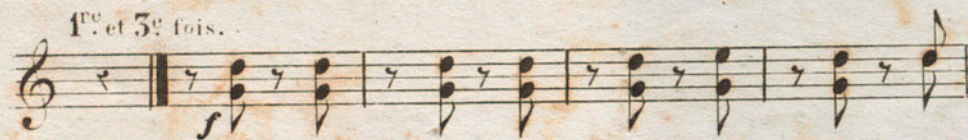
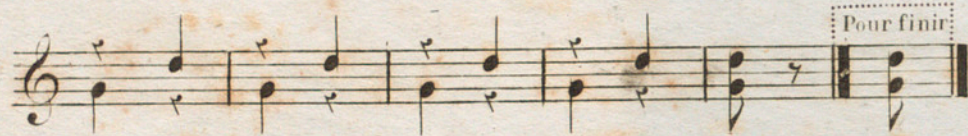
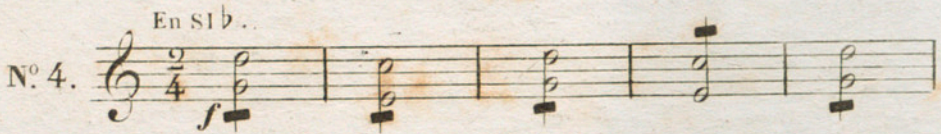
N<sup>o</sup> 2. *En RÉ.*  $\frac{2}{4}$  *f* 16 D.C.

N<sup>o</sup> 5. *En UT.*  $\frac{6}{8}$  *f* 7

*f* CODA.  $\frac{6}{8}$



TROMPETTES.



LE DIMANCHE DU SONNEUR.

PAR MUSARD.

1<sup>er</sup> TROMBONE.

N<sup>o</sup> 1

*f* *fz*

CODA

*f* *fz* 8 %

N<sup>o</sup> 2

*f* *f*

2<sup>e</sup> fois. 16 D.C. 4<sup>e</sup> fois. *f*

D.C.

N<sup>o</sup> 3

*f* *f*

CODA

*f* 8 %

1<sup>er</sup> TROMBONE.

N<sup>o</sup> 4.  $\text{f}$

*p*

*D.C.*

*f*

N<sup>o</sup> 5.  $\text{f}$  *2*  $\text{f}$  *8* *Coda*

*p* *1<sup>re</sup> et 3<sup>e</sup> fois.*

*tr* *2<sup>e</sup> et 4<sup>e</sup> fois.*

*f* *1<sup>a</sup>* *2<sup>a</sup>*

LE DIMANCHE DU SONNEUR.

PAR MUSARD.

2<sup>e</sup> TROMBONNE.

N<sup>o</sup> 1.

*fz* *fz* *f* CODA *f* 8 §

N<sup>o</sup> 2.

*f* 16 D.C. 2<sup>e</sup> et 4<sup>e</sup> fois. D.C.

N<sup>o</sup> 3.

*f* *f* CODA. 8 §

2<sup>e</sup> TROMBONNE.

N<sup>o</sup> 4. 

N<sup>o</sup> 5. 

LE DIMANCHE DU SONNEUR.

PAR MUSARD.

5<sup>e</sup> TROMBONE.

N<sup>o</sup> 1.

§  
*f*  
*fz*  
*f*  
CODA.  
*f*  
8 §

N<sup>o</sup> 2.

*fz*  
16 D.C. 4<sup>e</sup> fois.  
D.C.

N<sup>o</sup> 5.

§  
*f*  
CODA  
*f*  
8 §

5<sup>e</sup> TROMBONNE.

N<sup>o</sup> 4. 

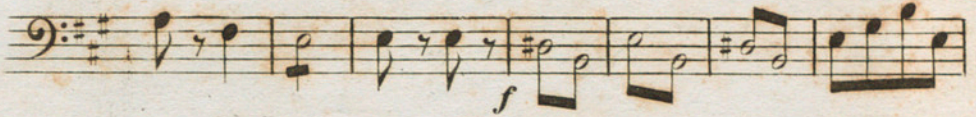
N<sup>o</sup> 5. 

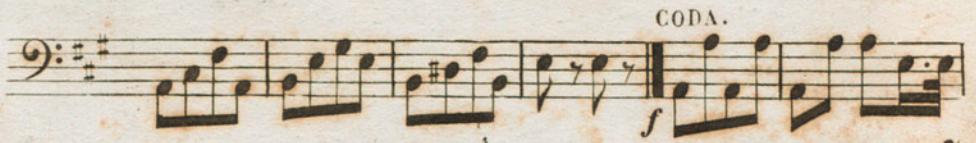
LE DIMANCHE DU SONNEUR

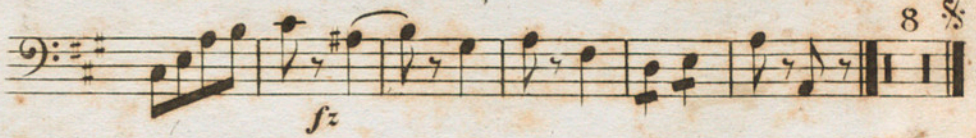
PAR MUSARD.

OPHICLEIDE.

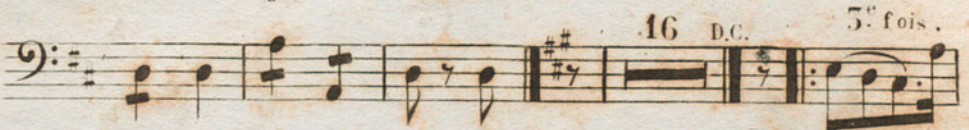
N° 1. 

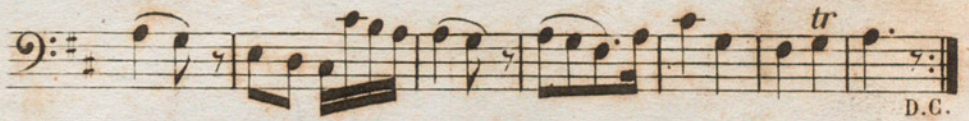





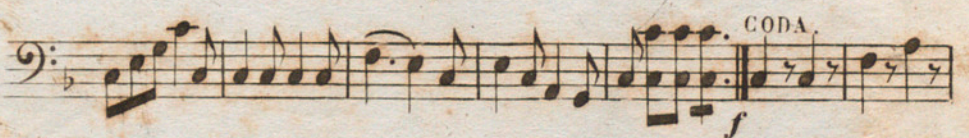


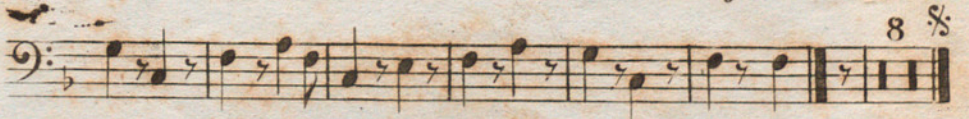
N° 2. 





N° 3. 







OPHICLEIDE .

N° 4.

*f*

7

*p*

*f* D.C.

N° 5.

2 § 7 Coda

*f*

Pour finir 1.<sup>e</sup> et 5.<sup>e</sup> fois.

*f*

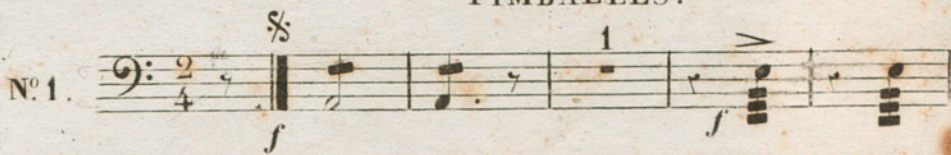
§ 2.<sup>e</sup> et 4.<sup>e</sup> fois.

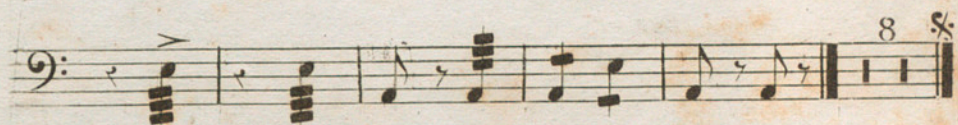
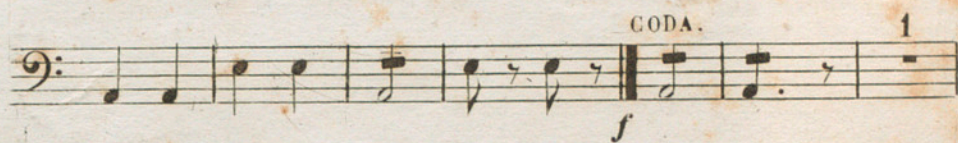
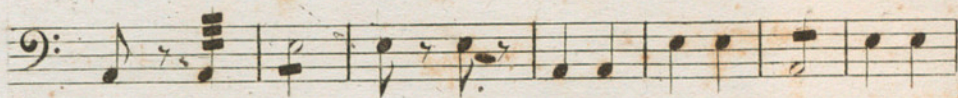
1<sup>a</sup> 2<sup>a</sup> §

LE DIMANCHE DU SONNEUR

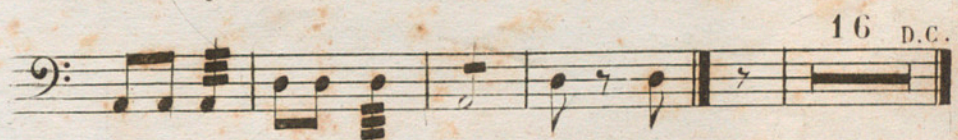
PAR MUSARD

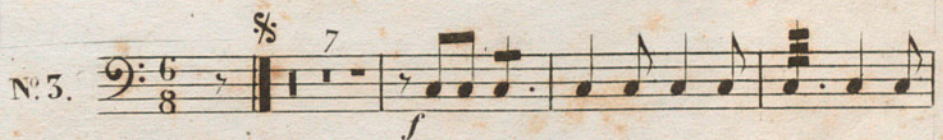
TIMBALLE.

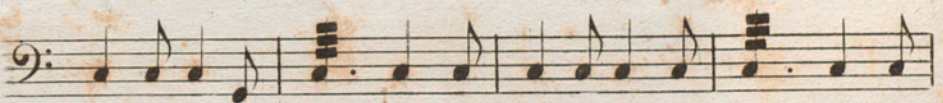
N<sup>o</sup> 1. 



N<sup>o</sup> 2. 

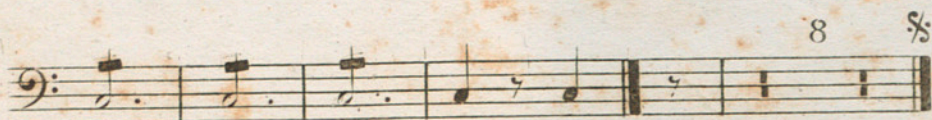


N<sup>o</sup> 3. 



TIMBALLE.

8 %



N° 4.  $\frac{2}{4}$  *f* 2 5 D.C. *f*



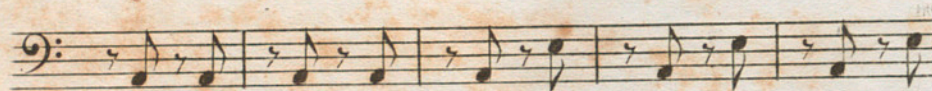
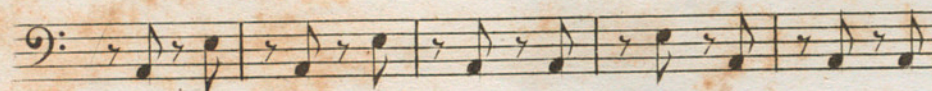
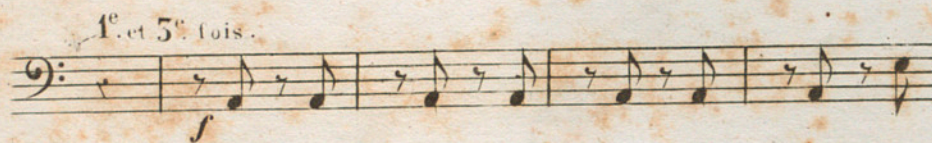
N° 5.  $\frac{2}{4}$  2 % 7 *f* *Coda*



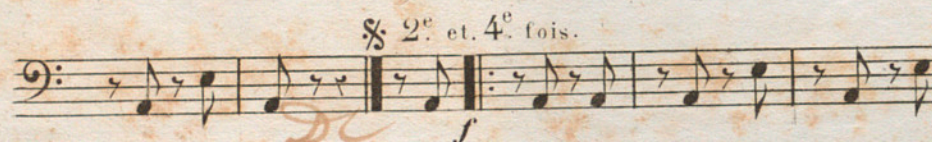
Pour finir



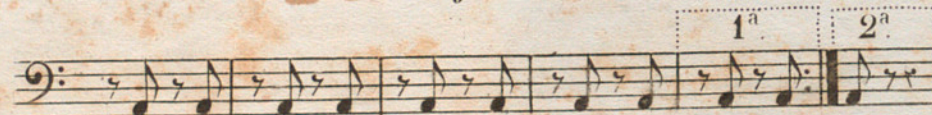
1<sup>e</sup>. et 5<sup>e</sup>. fois. *f*



% 2<sup>e</sup>. et 4<sup>e</sup>. fois. *f*



1<sup>a</sup>. 2<sup>a</sup>. %



Gran Casa

---

El Domingo del

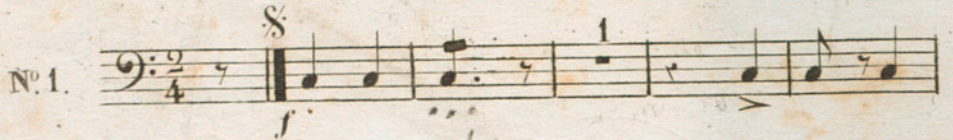
Campanero,

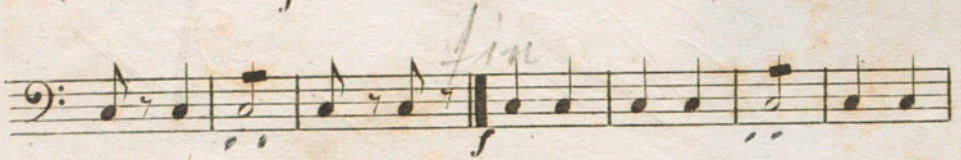
---


LE DIMANCHE DU SONNEUR.

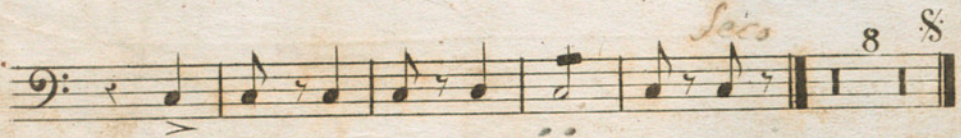
PAR MUSARD.

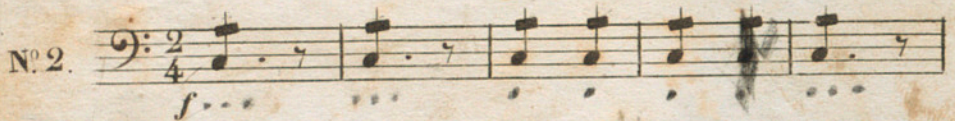
GROSSE CAISSE.

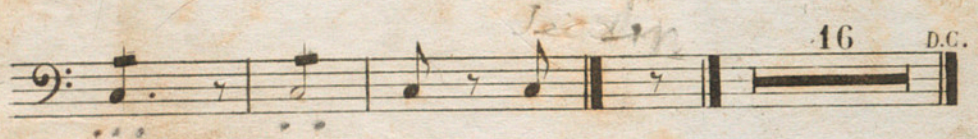
N<sup>o</sup> 1. 

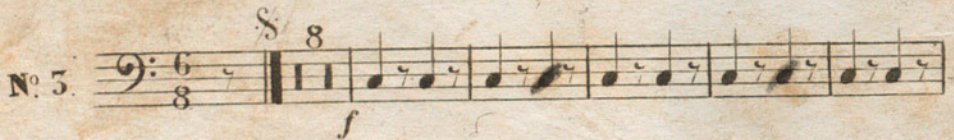




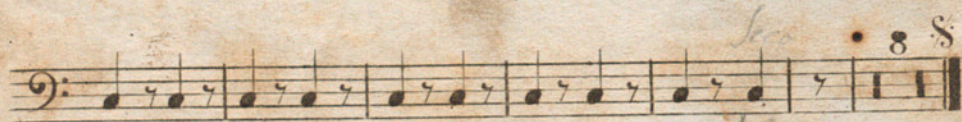


N<sup>o</sup> 2. 

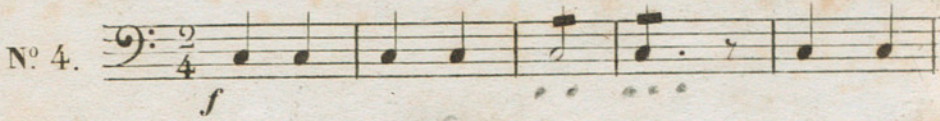


N<sup>o</sup> 3. 

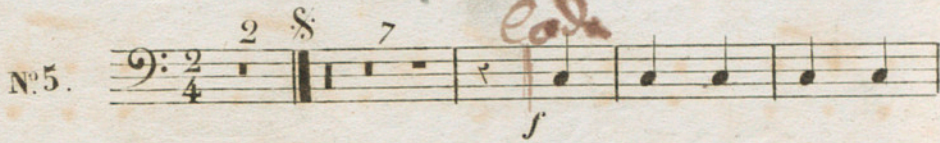




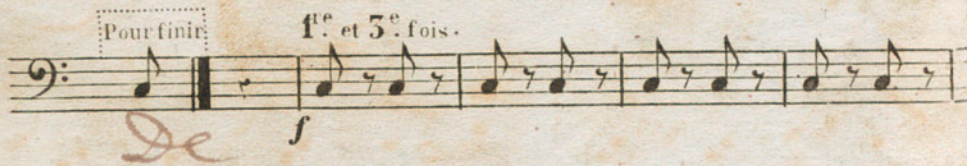
GROSSE CAISSE.

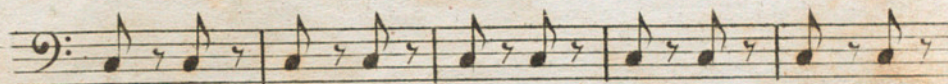
N° 4. 

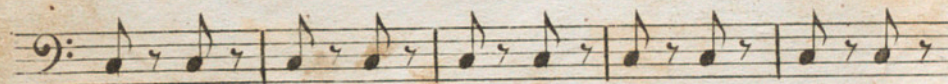



N° 5. 

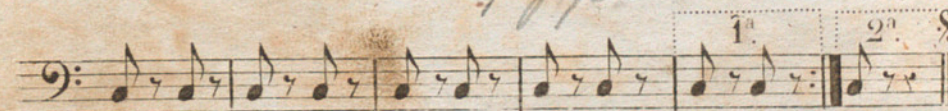


*Pour finir* 





*2<sup>e</sup>. et 4<sup>e</sup>. fois.* 

*1<sup>a</sup>.* *2<sup>a</sup>.* 

LE DIMANCHE DU SONNEUR.

PAR MUSARD.

CLOCHES.

N<sup>os</sup>. 1, 2, 3, 4, TACET.

N<sup>o</sup> 5.

The musical score for 'Petite Cloche' is written in 2/4 time. It begins with a treble clef and a piano (*p*) dynamic. The melody consists of a series of quarter notes: G4, A4, B4, C5, B4, A4, G4. A repeat sign is placed after the first four notes. The score then continues with the same melody. A handwritten word 'Cuda' is written above the staff. The piano accompaniment is shown in a grand staff with two staves. The right hand has a series of quarter notes: G4, A4, B4, C5, B4, A4, G4. The left hand has a series of quarter notes: G3, A3, B3, C4, B3, A3, G3. A dynamic of *f* (forte) is indicated for the piano part. The word 'Petite Cloche' is written below the piano part. The score ends with a double bar line and a repeat sign.

*p*

*f* Petite Cloche

en Mi

Pour finir.

15

15

*p*