

Pipe en Vois

Rigodon



Plantin

Handwritten musical score for Rigodon, featuring a voice part (Pipe en Vois) and a Rigodon accompaniment. The score is written on six staves. The first staff shows the key signature (two sharps) and the time signature (2/4). The music is in a 2/4 time signature. The score includes a Coda section. The notation is in a historical style, likely from the 18th or 19th century.

Handwritten musical score, first system. It consists of four staves. The top staff begins with a treble clef, a key signature of two sharps (F# and C#), and a 2/2 time signature. The music features a complex texture with many beamed notes and rests. The system concludes with a double bar line and a decorative flourish.

Handwritten musical score, second system. It consists of five staves. The top staff begins with a treble clef, a key signature of one sharp (F#), and a 3/8 time signature. The music continues with similar complexity. A section is marked "Coda" with a double bar line. The system ends with a double bar line and a decorative flourish.

Handwritten musical score on six staves. The notation includes treble clefs, a key signature of one sharp (F#), and a 2/4 time signature. The music features complex rhythmic patterns, including sixteenth and thirty-second notes, and dense chordal textures. A double bar line with repeat dots is present at the beginning of the second staff. The piece concludes with a double bar line and a final cadence symbol (C.C.) on the sixth staff.



Seven empty musical staves at the bottom of the page, providing space for further notation.



Handwritten musical score, first system. The top staff begins with a treble clef, a key signature of one sharp (F#), and a 2/4 time signature. The music consists of a melody and a bass line. A *Coda* marking is present above the second staff. The system concludes with a double bar line and a repeat sign.

Handwritten musical score, second system. The top staff features a treble clef, a key signature of two sharps (F# and C#), and a 2/4 time signature. The melody is marked with *8^a*. The system ends with a double bar line and a repeat sign.

Handwritten musical score, third system. The top staff has a treble clef, a key signature of two sharps, and a 2/4 time signature. The melody is marked with *8^a*. The system concludes with a double bar line and a repeat sign.

Handwritten musical score, fourth system. The top staff has a treble clef, a key signature of two sharps, and a 2/4 time signature. The melody is marked with *8^a*. The system concludes with a double bar line and a repeat sign.

Two empty musical staves at the bottom of the page.

Pipe en bois

Rigodon



~~Clarinete 2^o~~

Oboe

Handwritten musical score for Rigodon, featuring parts for Pipe en bois, Rigodon, and Oboe. The score is written on seven staves. The first staff is for the Pipe en bois, starting with a treble clef, a key signature of one flat (B-flat), and a 2/4 time signature. It begins with a *La* dynamic marking and a fermata. The second staff is for the Rigodon, starting with a treble clef, a key signature of one flat, and a 2/4 time signature. It includes a *eres* marking and a *cada* marking. The third staff is for the Oboe, starting with a treble clef, a key signature of one sharp (F-sharp), and a 2/4 time signature. The score concludes with a *D.C.* marking on the seventh staff.

Handwritten musical score, first system. It consists of four staves. The first staff begins with a treble clef, a key signature of two flats (B-flat and E-flat), and a 3/8 time signature. The second staff has a *loda* marking above it. The system concludes with a double bar line and a C.C. (Coda) symbol.

Handwritten musical score, second system. It consists of four staves. The first staff begins with a treble clef, a key signature of two flats, and a 2/4 time signature. The system concludes with a double bar line and a C.C. (Coda) symbol.

Handwritten musical score on a single page, featuring four staves of music. The notation includes various time signatures (5/4, 2/4, 3/4, 5/4, 6/4), key signatures (one flat), and dynamic markings such as *f*, *3^a*, *5^a*, and *Coda*. The music consists of complex rhythmic patterns and melodic lines.

Handwritten musical score on a single page, featuring three staves of music. The notation includes various time signatures (2/4, 3/4, 5/4), key signatures (one flat), and dynamic markings such as *f* and *tr*. The music consists of complex rhythmic patterns and melodic lines.

Pipe en bois = Rigodon =

Clarinetto 8^o



La

Handwritten musical notation on a five-line staff, featuring a treble clef, a key signature of one sharp (F#), and a 2/4 time signature. The notation includes various note values, rests, and slurs.

Handwritten musical notation on a five-line staff, continuing the piece with various note values and slurs.

Handwritten musical notation on a five-line staff, featuring a treble clef, a key signature of one sharp (F#), and a 2/4 time signature. The notation includes various note values, rests, and slurs.

Handwritten musical notation on a five-line staff, ending with a double bar line and a decorative flourish.

Handwritten musical notation on a five-line staff, featuring a treble clef, a key signature of two flats (Bb, Eb), and a 3/8 time signature. The notation includes various note values, rests, and slurs.

Handwritten musical notation on a five-line staff, continuing the piece with various note values and slurs.

Handwritten musical notation on a five-line staff, including the word "Coda" written above the staff. The notation includes various note values and slurs.

Handwritten musical notation on a five-line staff, featuring a treble clef, a key signature of two flats (Bb, Eb), and a 3/8 time signature. The notation includes various note values, rests, and slurs.

Handwritten musical notation on a five-line staff, ending with a double bar line and a decorative flourish.

Two empty five-line musical staves at the bottom of the page.

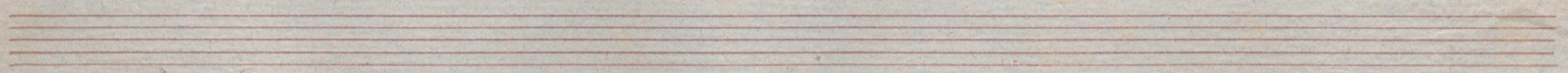
Handwritten musical notation, possibly a clef or key signature.

A handwritten musical score consisting of six staves. The notation is in a cursive, historical style. The first staff begins with a treble clef, a key signature of two flats (B-flat and E-flat), and a 3/4 time signature. The music is written in a single melodic line. The notation includes various note values, rests, and dynamic markings such as *mf* and *tr*. The piece concludes with a double bar line and a decorative flourish. The paper shows signs of age, including some staining and a small tear on the left side.

Handwritten musical score, first system. The notation is in treble clef with a key signature of two flats (B-flat and E-flat) and a 2/4 time signature. The music begins with a treble clef, a key signature of two flats, and a 2/4 time signature. The first staff contains a series of eighth and sixteenth notes, some beamed together. A fermata is placed over the first measure. The second staff continues the melodic line, with a 'Coda' marking above the staff. The third staff shows a continuation of the melodic line, ending with a double bar line.

Handwritten musical score, second system. The notation is in treble clef with a key signature of two flats and a 2/4 time signature. The first staff begins with a treble clef, a key signature of two flats, and a 2/4 time signature. The music consists of a series of eighth and sixteenth notes, some beamed together. The second staff continues the melodic line, with a fermata over the first measure. The third staff shows a continuation of the melodic line, ending with a double bar line.

Handwritten musical score, third system. The notation is in bass clef with a key signature of two flats and a 2/4 time signature. The first staff begins with a bass clef, a key signature of two flats, and a 2/4 time signature. The music consists of a series of eighth and sixteenth notes, some beamed together. The second staff continues the melodic line, with a fermata over the first measure. The third staff shows a continuation of the melodic line, ending with a double bar line.



Pipe en bois =

Rigodon



Clarinete 2º

La

Handwritten musical score for Clarinete 2º. The score consists of eight staves of music. The first staff begins with a treble clef, a key signature of one flat (Bb), and a 2/4 time signature. The music is written in a cursive, handwritten style. The second staff contains a dynamic marking 'f' and a fermata. The third staff has a dynamic marking 'cres' and a 'Coda' section. The fourth staff features a key signature change to one sharp (F#) and a double bar line. The fifth staff has a dynamic marking 'f'. The sixth and seventh staves continue the melodic line with various rhythmic patterns and slurs. The eighth staff concludes with a double bar line and a fermata.

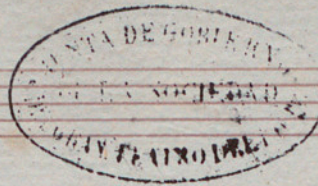
Handwritten musical score, first system. It consists of four staves. The first staff begins with a treble clef, a key signature of two flats (B-flat and E-flat), and a 3/8 time signature. The notation includes various note values, rests, and bar lines. The second staff contains a *ppda* dynamic marking. The third staff features a key signature change to one flat (B-flat). The fourth staff concludes with a double bar line and a decorative flourish.

Handwritten musical score, second system. It consists of four staves. The first staff begins with a treble clef, a key signature of two flats (B-flat and E-flat), and a 4/4 time signature. The notation includes various note values, rests, and bar lines. The second staff contains a *f* dynamic marking. The third staff features a key signature change to one flat (B-flat). The fourth staff concludes with a double bar line and a decorative flourish.

Handwritten musical score on a page with ten staves. The notation is in brown ink on aged paper. The first staff begins with a treble clef, a key signature of two flats (B-flat and E-flat), and a 2/4 time signature. The word "Coda" is written above the first measure. The second staff starts with the word "faga" and a 5/4 time signature. The third staff begins with a treble clef and a 5/4 time signature. The fourth staff contains a large, decorative flourish. The fifth staff starts with a bass clef and a 5/4 time signature. The sixth staff begins with a treble clef and a 5/4 time signature. The seventh staff contains another large, decorative flourish. The remaining three staves at the bottom of the page are empty.

Pipe en bois

Rigodon



Contrabajo

Fagot

Handwritten musical notation for the first system, featuring a treble clef, a key signature of two sharps (F# and C#), and a 2/4 time signature. The notation includes various rhythmic values such as quarter and eighth notes, rests, and bar lines. A large 'S' symbol is written above the first measure. The system concludes with a double bar line and a 'C' time signature.

Handwritten musical notation for the second system, featuring a bass clef, a key signature of three sharps (F#, C#, and G#), and a 2/4 time signature. The notation includes various rhythmic values such as quarter and eighth notes, rests, and bar lines. A large 'S' symbol is written above the first measure. The system concludes with a double bar line and a 'C' time signature.

Handwritten musical score, first system. The music is written on four staves. The first staff begins with a treble clef, a key signature of one sharp (F#), and a 6/8 time signature. A large handwritten '2' is written above the first few notes. The second staff contains notes with slurs and accents. The third staff has a 'Coda' marking above the first few notes. The fourth staff ends with a double bar line and a decorative flourish.

Handwritten musical score, second system. The music is written on four staves. The first staff begins with a treble clef, a key signature of one sharp (F#), and a 2/4 time signature. A large handwritten '4' is written above the first few notes. The second staff contains notes with slurs and accents. The third staff has a 'Coda' marking above the first few notes. The fourth staff ends with a double bar line and a decorative flourish.

Handwritten musical notation on a five-line staff. It begins with a treble clef, a key signature of one sharp (F#), and a time signature of 2/4. The notation consists of several measures of music, including notes, rests, and bar lines. A decorative flourish is present above the first measure.

Handwritten musical notation on a five-line staff. It starts with a treble clef and a key signature of one sharp (F#). The word "Coda" is written above the first measure. The notation includes notes, rests, and bar lines, ending with a double bar line.

Handwritten musical notation on a five-line staff. It begins with the text "Page 50" followed by a double bar line and a key signature of two sharps (F# and C#). The notation consists of several measures of music with notes and rests.

Handwritten musical notation on a five-line staff. It continues with notes and rests, ending with a double bar line and a decorative flourish.

Handwritten musical notation on a five-line staff. It begins with the text "De l'uk" and "Lyd" above the first measure. The notation consists of several measures of music with notes and rests, ending with a double bar line and a decorative flourish.

Four empty five-line musical staves at the bottom of the page.

Pipe en bois

Rigodon



Trompas

La

Handwritten musical notation for the first system, consisting of three staves. The first staff begins with a treble clef, a key signature of one flat (B-flat), and a 2/4 time signature. The notation includes various rhythmic values and rests. A 'Coda' symbol is present in the second staff. The system concludes with a double bar line and a 'Coda' symbol.

Handwritten musical notation for the second system, consisting of three staves. The first staff begins with a treble clef, a key signature of one flat (B-flat), and a 2/4 time signature. The notation includes various rhythmic values and rests. The system concludes with a double bar line and a 'Coda' symbol.

En Sol

The first system of the handwritten musical score consists of three staves. The top staff begins with a treble clef and a key signature of one sharp (F#). It contains several measures of music, including a large, ornate flourish at the beginning. The middle and bottom staves continue the musical notation with various note values and rests. The system concludes with a double bar line and a decorative flourish.

fin

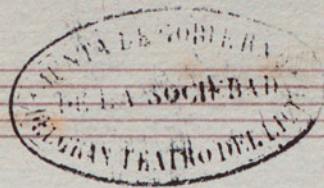
The second system of the handwritten musical score consists of four staves. The top staff begins with a treble clef and a key signature of one sharp (F#). It contains several measures of music, including a large, ornate flourish at the beginning. The middle and bottom staves continue the musical notation with various note values and rests. The system concludes with a double bar line and a decorative flourish. The word "fin" is written above the top staff.

No 5

Handwritten musical score for No. 5. The score is written on a system of five staves. The first staff begins with a treble clef and a 2/4 time signature. The music is written in a cursive, handwritten style. The first staff contains a melodic line starting with a half rest, followed by a series of eighth notes and a final measure with a 'Coda' marking. The second staff contains a bass line with a key signature of one flat and a series of eighth notes. The third and fourth staves contain a piano accompaniment with chords and eighth notes. The fifth and sixth staves contain a guitar part with a 'Guitar' marking and a series of chords. The score concludes with a 'Coda' marking and a final flourish.

Pipe en bois =

Rigodon =



Cornetín 1^o

Handwritten musical score for Cornetín 1^o. The score is written on five staves. The first staff begins with a treble clef, a key signature of one flat (B-flat), and a 2/4 time signature. The music consists of eighth and sixteenth notes. A large "la" is written above the first few notes. A "Coda" marking is present above the fourth staff. The piece concludes with a double bar line, a repeat sign, and a large "X" mark. The word "siempre" is written above the fifth staff.

Andante

C.

Coda

C.

Handwritten musical notation, possibly a key signature or time signature, consisting of a treble clef and a sharp sign.

Handwritten musical score on five staves. The notation includes notes, rests, and bar lines. The first staff begins with a treble clef, a sharp sign, and a 2/4 time signature. The music is written in a cursive, handwritten style. The word "cresc" is written in the middle of the fourth staff. The piece concludes with a double bar line and a decorative flourish on the fifth staff.

Handwritten musical notation on a five-line staff. The piece begins with a treble clef, a key signature of two flats (B-flat and E-flat), and a 2/4 time signature. The notation consists of a series of eighth and sixteenth notes, with some slurs and a fermata over the first measure. A 'Coda' symbol is written above the staff in the middle of the piece. The staff ends with a double bar line and repeat dots.

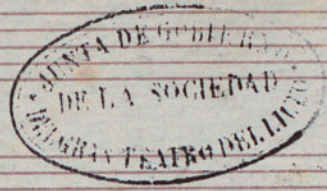
Handwritten musical notation on a five-line staff. The piece begins with a treble clef, a key signature of two flats, and a 5/4 time signature. The notation features a mix of eighth and sixteenth notes, with several slurs and trills marked with a 't' above the notes. The piece concludes with a large, decorative flourish that resembles a stylized 'S' or 'C' shape.



Pipe en Bois

Rigodon

Cornet in 2^o



La

The first system of handwritten musical notation, consisting of three staves. The top staff begins with a treble clef, a key signature of one sharp (F#), and a 2/4 time signature. The music is written in a cursive hand. A fermata is placed over the first measure of the top staff. The word "Coda" is written above the final measure of the second staff. The system concludes with a double bar line and a repeat sign.

The second system of handwritten musical notation, also consisting of three staves. It begins with a treble clef, a key signature of one sharp (F#), and a 2/4 time signature. The notation is dense with many beamed notes. The word "2^a y 4^a" is written above the first measure of the top staff. The system ends with a double bar line and a repeat sign.

Handwritten musical score, first system. The music is written on five staves. The first staff begins with a treble clef, a key signature of two flats (B-flat and E-flat), and a 3/8 time signature. The notation includes various note values, rests, and dynamic markings such as *p* and *f*. A section of the music is marked *Coda*. The system concludes with a double bar line and a decorative flourish.

no 4

Handwritten musical score, second system. The music is written on three staves. The first staff begins with a treble clef, a key signature of two flats, and a 3/8 time signature. The notation includes various note values, rests, and dynamic markings such as *f*. The system concludes with a double bar line and a decorative flourish.

W 5

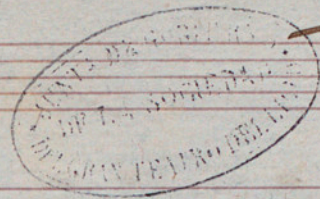
Coda

f *gaga*

Da la

Pipe en bois //

Rigodon



Trombon 1^o

Musical notation for the first system, consisting of three staves. The first staff begins with a treble clef, a key signature of two sharps (F# and C#), and a 2/4 time signature. The music is written in a cursive hand. A large 'X' is drawn over the first few notes of the first staff. The word 'Coda' is written above the first staff of the second system.

Musical notation for the second system, consisting of three staves. The first staff begins with a treble clef, a key signature of two sharps (F# and C#), and a 2/4 time signature. The music is written in a cursive hand. A large 'X' is drawn over the first few notes of the first staff. The notation concludes with a double bar line and a 'DC' (Da Capo) marking.

Handwritten musical score on four staves. The first staff begins with a treble clef, a key signature of one sharp (F#), and a 3/8 time signature. The notation includes various note values, rests, and bar lines. A large 'X' is drawn over the first few notes of the first staff. The second staff contains the word "Coda" written above the notes. The fourth staff concludes with a double bar line and a decorative flourish.

Handwritten musical score on four staves. The first staff begins with a treble clef, a key signature of one sharp (F#), and a 3/8 time signature. The notation includes various note values, rests, and bar lines. The word "Cresc." is written above the notes in the third staff. The fourth staff concludes with a double bar line and a decorative flourish.

Handwritten musical notation on a five-line staff. It begins with a treble clef, a key signature of one sharp (F#), and a 2/4 time signature. The notation includes a series of slanted lines, possibly representing rests or specific rhythmic values, and some handwritten markings above the staff.

Handwritten musical notation on a five-line staff. It features a treble clef, a key signature of one sharp (F#), and a 2/4 time signature. The notes are accompanied by the lyrics "sa ga sa" written above the staff. There are dynamic markings such as "f" and "a2" visible.

Handwritten musical notation on a five-line staff, continuing the melody from the previous staff. It includes various note values and rests, with a key signature of one sharp (F#).

Handwritten musical notation on a five-line staff, continuing the melody. It features a treble clef, a key signature of one sharp (F#), and a 2/4 time signature. The notation includes various note values and rests.

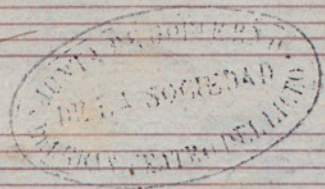
Handwritten musical notation on a five-line staff, continuing the melody. It features a treble clef, a key signature of one sharp (F#), and a 2/4 time signature. The notation includes various note values and rests.

Handwritten signature or initials in cursive script, located at the end of the musical notation on the fifth staff.

Pipe en Vois //

Rigodon //

Trombon 2^o



Handwritten musical notation for the first system, consisting of three staves. The first staff begins with a treble clef, a key signature of two sharps (F# and C#), and a 2/4 time signature. The music is written in a cursive style with various note values and rests. A large, decorative flourish is written above the first few notes. The second staff continues the melody with a sharp sign above a note. The third staff concludes the system with a double bar line and a decorative flourish.

Handwritten musical notation for the second system, consisting of three staves. The first staff begins with a treble clef, a key signature of two sharps (F# and C#), and a 2/4 time signature. The music continues with various note values and rests. The second staff features a sharp sign above a note. The third staff concludes the system with a double bar line and a decorative flourish.

Handwritten musical score, first system. The music is written on four staves. The first staff begins with a treble clef, a key signature of one sharp (F#), and a 6/8 time signature. The notation includes various note values, rests, and dynamic markings such as *f* and *Code*. The system concludes with a double bar line and a decorative flourish.

Handwritten musical score, second system. The music is written on four staves. The first staff begins with a treble clef, a key signature of one sharp (F#), and a 6/8 time signature. The notation includes various note values, rests, and dynamic markings such as *f* and *cus*. The system concludes with a double bar line and a decorative flourish.

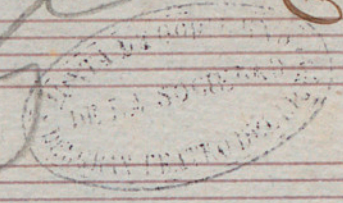
Handwritten musical score on a page with five systems of staves. The first system contains a treble clef, a key signature of two sharps (F# and C#), and a time signature of 5/4. The word "Coda" is written above the first staff. The second system begins with the word "paga" written above the staff. The notation includes various note values, rests, and bar lines, ending with a double bar line and a Coda symbol. The third system continues the musical notation. The fourth system begins with the word "paga" written above the staff. The fifth system continues the notation and ends with a Coda symbol. The remaining three systems of staves are empty.

Pipe en bois

Julien Rigodon

1865

Trombon 3^o



Coda

Empty musical staves at the bottom of the page.

Handwritten musical score on three staves. The first staff begins with a treble clef, a key signature of one sharp (F#), and a 6/8 time signature. The music consists of a series of notes and rests. A second staff continues the melody with a *Cresc.* marking above it. The third staff concludes the piece with a double bar line and a decorative flourish.

Handwritten musical score on four staves. The first staff begins with a treble clef, a key signature of one sharp (F#), and a 2/2 time signature. The music features a mix of notes and rests. The second staff includes a *f* (forte) dynamic marking. The third and fourth staves continue the composition, ending with a double bar line and a decorative flourish.

No 5

Handwritten musical notation on a five-line staff. It begins with a treble clef, a key signature of one sharp (F#), and a 2/4 time signature. The notation includes various note values, rests, and slurs. A large, decorative flourish is written above the first few notes.

Handwritten musical notation on a five-line staff, continuing the piece. It features a series of notes with stems, some with slurs, and a key signature change to two sharps (F# and C#).

Handwritten musical notation on a five-line staff, continuing the piece. It includes a series of notes with stems and slurs, ending with a double bar line and a large, decorative flourish.

Handwritten musical notation on a five-line staff, continuing the piece. It features a series of notes with stems and slurs, and a key signature change to one sharp (F#).

Handwritten musical notation on a five-line staff, continuing the piece. It includes a series of notes with stems and slurs, ending with a double bar line and a large, decorative flourish.

Four empty five-line musical staves at the bottom of the page.

Pipe en bois

Rigodon



Figle

Handwritten musical notation for the first system, consisting of three staves. The first staff begins with a treble clef, a key signature of two sharps (F# and C#), and a 2/4 time signature. The music is written in a cursive style with various note values and rests. A large 'S' is written above the first few notes. The second staff has a 'Caden' marking above it. The third staff ends with a double bar line and a large 'S'.

Handwritten musical notation for the second system, consisting of three staves. The first staff begins with a treble clef, a key signature of two sharps (F# and C#), and a 2/4 time signature. The music continues in the same cursive style. The word 'Fin' is written above the end of the first staff. The third staff ends with a double bar line.

3

Handwritten musical notation for the first system, consisting of three staves. The first staff has a treble clef, a key signature of one sharp (F#), and a 6/8 time signature. It begins with a double bar line and a fermata over a quarter note. The second staff contains a series of eighth notes and quarter notes, with a "Coda" marking above the second measure. The third staff continues the melody and ends with a double bar line and a decorative flourish.

4

Handwritten musical notation for the second system, consisting of four staves. The first staff has a treble clef, a key signature of one sharp (F#), and a 2/4 time signature. It features a series of eighth notes. The second staff has a treble clef and contains eighth notes with slurs. The third staff continues the melody with eighth notes and quarter notes. The fourth staff concludes the system with a double bar line and a decorative flourish.

fin

#05

Handwritten musical notation for the first system. It begins with a treble clef, a 2/4 time signature, and a key signature of one sharp (F#). The notation includes a double bar line, a fermata, and a section labeled "Coda". The melody consists of quarter and eighth notes, with some slurs and ties. The system concludes with a double bar line and a fermata.

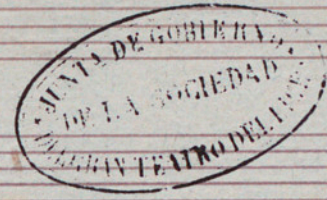
Handwritten musical notation for the second system. It begins with a treble clef and a 2/4 time signature. The notation includes a double bar line, a fermata, and a section labeled "Coda". The melody consists of quarter and eighth notes, with some slurs and ties. The system concludes with a double bar line and a fermata.

— g. l. año 1887 —

Pipe en bois //

Rigodon

Timpani



Re-la

Musical notation for the first system, including staves for Pipe en bois and Timpani.

Handwritten musical notation for the first system, including staves for Pipe en bois and Timpani. The notation is in a cursive style with various clefs and notes.

mi-si

Musical notation for the second system, including staves for Pipe en bois and Timpani.

Handwritten musical notation for the second system, including staves for Pipe en bois and Timpani. The notation is in a cursive style with various clefs and notes.

Sol-Re

Handwritten musical score for Sol-Re. The score is written on three staves. The first staff begins with a treble clef, a key signature of one sharp (F#), and a 3/8 time signature. The notation includes various note values and rests, with a fermata over a note in the second measure. The second staff uses a bass clef and contains further musical notation, including a fermata and a 'Coda' marking. The third staff continues the piece and concludes with a double bar line and a 'Coda' symbol.

Sol-Re

Handwritten musical score for Sol-Re. The score is written on four staves. The first staff begins with a treble clef, a key signature of one sharp (F#), and a 2/4 time signature. The notation includes various note values and rests, with a fermata over a note in the second measure. The second staff uses a bass clef and contains further musical notation, including a fermata and a 'Coda' marking. The third and fourth staves continue the piece and conclude with a double bar line and a 'Coda' symbol.

No 5 Sol-Re

Handwritten musical notation on a five-line staff. It begins with a treble clef, a key signature of one sharp (F#), and a 2/4 time signature. The notation includes a series of slurs and a measure with a note and a sharp sign, followed by several measures with slurs. The word "Code" is written above the staff.

Handwritten musical notation on a five-line staff, consisting of a single measure with a slur and two notes.

Handwritten musical notation on a five-line staff. It starts with a treble clef, a key signature of one sharp (F#), and a 2/4 time signature. The notation includes a series of slurs and a measure with a note and a sharp sign, followed by several measures with slurs.

Handwritten musical notation on a five-line staff. It starts with a treble clef, a key signature of one sharp (F#), and a 2/4 time signature. The notation includes a series of slurs and a measure with a note and a sharp sign, followed by several measures with slurs.

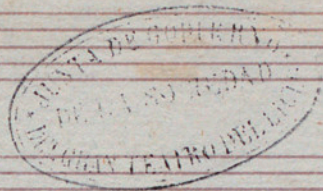
Handwritten musical notation on a five-line staff. It starts with a treble clef, a key signature of one sharp (F#), and a 2/4 time signature. The notation includes a series of slurs and a measure with a note and a sharp sign, followed by several measures with slurs.

Handwritten musical notation on a five-line staff. It starts with a treble clef, a key signature of one sharp (F#), and a 2/4 time signature. The notation includes a series of slurs and a measure with a note and a sharp sign, followed by several measures with slurs.

Pipe en bois

Rigodon

Bombo



Handwritten musical notation for the first system, featuring a treble clef, a key signature of one sharp (F#), and a 2/4 time signature. The notation includes various rhythmic values and rests.

Handwritten musical notation for the second system, continuing the piece with rhythmic patterns and rests.

Handwritten musical notation for the third system, including a *Coda* marking and a double bar line with a repeat sign.

Handwritten musical notation for the fourth system, starting with a treble clef and a 2/4 time signature. It includes a *9^o y 4^o* marking above the staff.

Handwritten musical notation for the fifth system, continuing the rhythmic sequence.

Handwritten musical notation for the sixth system, ending with a double bar line and the initials *M.D.C.*

Handwritten musical notation on three staves. The first staff begins with a treble clef, a key signature of one sharp (F#), and a 6/8 time signature. The notation includes various note values, rests, and bar lines. A double bar line with repeat dots is followed by a fermata. The word "Coda" is written above the second staff. The piece concludes with a double bar line and a Coda symbol.

Handwritten musical notation on three staves. The first staff begins with a treble clef, a key signature of one sharp (F#), and a 3/4 time signature. The notation includes various note values, rests, and bar lines. A double bar line with repeat dots is followed by a fermata. The word "Coda" is written above the second staff. The piece concludes with a double bar line and a Coda symbol.

#5

Code

Handwritten musical notation for the first system, consisting of three staves. The first staff begins with a treble clef, a 2/4 time signature, and a key signature of one sharp (F#). It contains several measures of music, including a measure with a large 'S' and a measure with 'Code' written above it. The second and third staves continue the notation with various notes and rests.

2^a

Handwritten musical notation for the second system, consisting of two staves. The first staff begins with a treble clef and a 4/4 time signature. It contains several measures of music, including a measure with a large 'S' and a measure with '2a' written above it. The second staff continues the notation with various notes and rests.

Pipe en bois =

Rigodon =

Caja



~~nos~~

Handwritten musical notation for the first system, consisting of three staves. The first staff begins with a treble clef and a 2/2 time signature. The notation includes various rhythmic values and rests, with a large 'F' marking the start of the piece. The system concludes with a double bar line and a 'DC' (Da Capo) instruction.

Handwritten musical notation for the second system, consisting of two staves. The first staff begins with a bass clef and a 2/2 time signature. The notation continues with rhythmic patterns and rests. A '2^a 4^e' marking is present above the second staff. The system concludes with a double bar line and a 'DC' instruction.

Handwritten musical notation for the third system, consisting of two staves. The first staff begins with a 3/8 time signature. The notation includes complex rhythmic patterns. A 'C^ope' marking is present above the second staff. The system concludes with a double bar line and a 'DC' instruction.

Handwritten musical notation on three staves. The first staff begins with a treble clef and a 4/4 time signature. The second staff has a 3/4 time signature. The notation includes various note values, rests, and bar lines, ending with a double bar line and a decorative flourish.

Handwritten musical notation on three staves. The first staff has a treble clef and a 2/4 time signature. The second staff is marked with a 5/4 time signature. The notation includes notes, rests, and bar lines, ending with a double bar line and a flourish.

Handwritten musical notation on two staves. The first staff has a treble clef and a 4/4 time signature. The notation includes notes, rests, and bar lines, ending with a double bar line and a flourish.

no 148

Pipe en bois



Violin Pral

48.

Nigodon

S.

Cres

Coda

Al. S.

The image shows a page of handwritten musical notation on aged, slightly stained paper. The notation is written in brown ink and consists of seven staves. The first staff begins with a treble clef, a key signature of two sharps (F# and C#), and a large, decorative initial 'S.' written above the staff. The music is written in a style characteristic of the 18th or 19th century, with various note values, rests, and dynamic markings. The second staff has a 'Cres' marking below it. The third staff has a 'Coda' marking above it. The fourth staff has a 'p' marking below it. The fifth staff has a 'p' marking below it. The sixth staff has a 'p' marking below it. The seventh staff has a 'p' marking below it and ends with a double bar line and the marking 'Al. S.' written above the staff.

Handwritten musical notation on a single staff. It begins with a treble clef, a key signature of three sharps (F#, C#, G#), and a common time signature (C). The notation includes a series of notes, some with slurs, and a double bar line near the end of the staff.

Handwritten musical notation on a single staff. It starts with a treble clef, a key signature of three sharps, and a common time signature. A tempo marking "2^a 4^c" is written above the staff. The notation features a series of notes with slurs and a double bar line.

Handwritten musical notation on a single staff. It continues with a treble clef, a key signature of three sharps, and a common time signature. The notation consists of a series of notes with slurs and a double bar line.

Handwritten musical notation on a single staff. It begins with a treble clef, a key signature of three sharps, and a common time signature. The notation includes a series of notes with slurs and a double bar line, followed by a large, stylized flourish or signature.

Four empty musical staves at the bottom of the page, showing only the red lines.

A handwritten musical score on six staves. The notation is in brown ink on aged paper. The first staff begins with a treble clef, a key signature of one sharp (F#), and a 6/8 time signature. The music consists of various rhythmic values, including eighth and sixteenth notes, often beamed together. The second staff contains mostly rests with some melodic fragments. The third staff features a melodic line with many slurs. The fourth staff has the word "Goda" written above it in a decorative script. The fifth staff continues the melodic line with some slurs. The sixth staff concludes with a double bar line and a large, stylized flourish.

A handwritten musical score on six staves. The notation includes treble clefs, a key signature of one sharp (F#), and a 2/4 time signature. The music features various rhythmic patterns, including eighth and sixteenth notes, and rests. The second staff contains the lyrics "Ces - en - do" written in a cursive hand. The piece concludes with a double bar line and the initials "D.C." (Da Capo).

5

Handwritten musical notation on a five-line staff. It begins with a treble clef, a key signature of two sharps (F# and C#), and a time signature of 2/4. The music consists of several measures of notes and rests, ending with a double bar line.

Con

Handwritten musical notation on a five-line staff. It begins with a treble clef, a key signature of two sharps, and a time signature of 2/4. The music consists of several measures of notes and rests, ending with a double bar line.

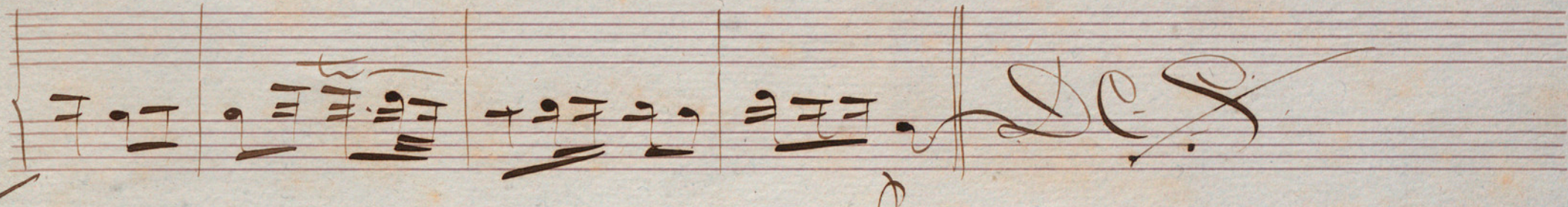
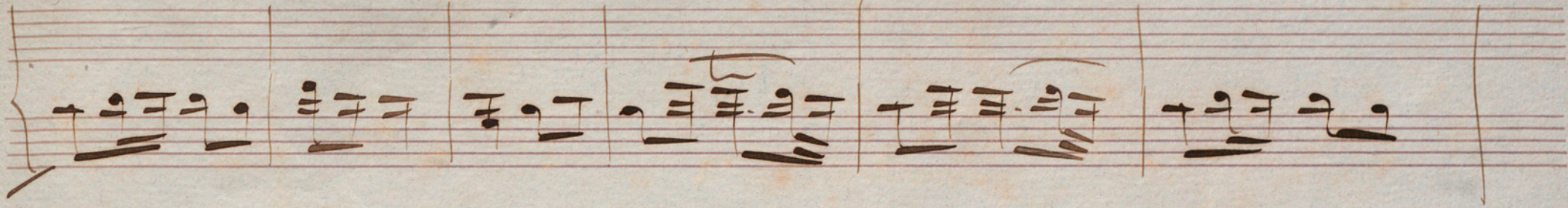
gaza ya

Handwritten musical notation on a five-line staff. It begins with a treble clef, a key signature of two sharps, and a time signature of 2/4. The word "gaza ya" is written to the left of the staff. The music consists of several measures of notes and rests, ending with a double bar line.

Handwritten musical notation on a five-line staff. It begins with a treble clef, a key signature of two sharps, and a time signature of 2/4. The music consists of several measures of notes and rests, ending with a double bar line and a large flourish.

Raja

Handwritten musical notation on a five-line staff. It begins with a treble clef, a key signature of two sharps, and a time signature of 2/4. The word "Raja" is written to the left of the staff. The music consists of several measures of notes and rests, ending with a double bar line.



Pipe en bois //

Rigodon //

Violin 1^o

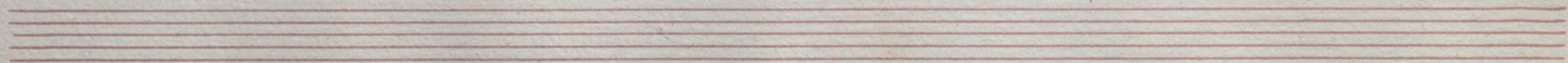


Handwritten musical notation for the first system, consisting of four staves. The notation is in treble clef with a key signature of two sharps (F# and C#) and a 2/4 time signature. The music features a series of eighth and sixteenth notes, often beamed together, with some slurs and dynamic markings.

Handwritten musical notation for the second system, consisting of two staves. The notation continues from the first system, featuring similar rhythmic patterns and melodic lines. The second staff includes a large, decorative flourish at the end of the piece.

Handwritten musical score, first system. It consists of four staves. The first staff begins with a treble clef, a key signature of three sharps (F#, C#, G#), and a 9/8 time signature. The music is written in a cursive style with many slurs and ties. The second staff has a '2 u 4' marking above it. The system concludes with a double bar line and a decorative flourish.

Handwritten musical score, second system. It consists of five staves. The first staff begins with a treble clef, a key signature of one sharp (F#), and a 6/8 time signature. The music continues in a cursive style. The third staff has a 'Coda' marking above it. The system concludes with a double bar line and a decorative flourish.



W

A handwritten musical score on five staves. The first staff begins with a treble clef, a key signature of one sharp (F#), and a 9/8 time signature. The music is written in a cursive, historical style. The first two staves contain a melodic line with various note values and rests. The third and fourth staves contain a more complex texture with many beamed notes and rests. The fifth staff begins with the word "cres" written above the first few notes. The score concludes with a double bar line and a fermata-like flourish.

Handwritten musical score on aged paper, featuring three systems of staves. The notation is in brown ink and includes various musical symbols such as clefs, sharps, and notes. The first system consists of two staves. The second system consists of two staves. The third system consists of two staves. The notation is dense and includes various musical symbols such as clefs, sharps, and notes. The paper shows signs of age, including foxing and staining.

Four empty musical staves at the bottom of the page, arranged in two pairs. The staves are ruled with five lines each and are completely blank.

Pipe en bois =

Rigodon



Violin 2^o

Handwritten musical score on aged paper, consisting of ten staves. The notation is in brown ink and includes various musical symbols such as clefs, time signatures, notes, rests, and bar lines. The first staff begins with a treble clef, a key signature of one sharp (F#), and a time signature of 2/2. The second staff begins with a bass clef and a time signature of 2/2. The score concludes with a double bar line and a repeat sign (C) on the tenth staff. There are some corrections and scribbles throughout the manuscript, particularly in the first and fifth staves.

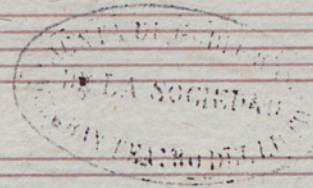
Handwritten musical score on six staves. The notation includes various notes, rests, and clefs. The first staff begins with a treble clef, a key signature of one sharp (F#), and a time signature of 5/4. The music is written in a cursive, historical style. The score concludes with a double bar line and a decorative flourish on the fifth staff.



Pipe en bois

Aigodou

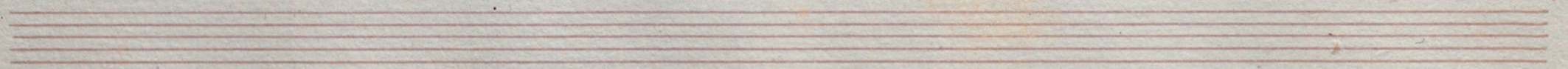
Violas



A handwritten musical score for two instruments: Pipe en bois and Violas. The score is written on ten staves. The first staff is for the Pipe en bois, and the second staff is for the Violas. The music is in a key with three sharps (F#, C#, G#) and a 2/4 time signature. The score begins with a treble clef and a key signature of three sharps. The first staff contains a melodic line with various note values and rests. The second staff contains a bass line with similar note values and rests. The score is written in a cursive, handwritten style. There are several slurs and dynamic markings throughout the piece. The piece ends with a double bar line and a repeat sign. The number "1221" is written at the bottom of the page.

Handwritten musical score, first system. It consists of four staves. The first staff begins with a treble clef, a key signature of two sharps (F# and C#), and a 3/8 time signature. The notation includes various note values, rests, and bar lines. The second staff contains a dense sequence of notes, possibly representing a keyboard accompaniment. The third staff is marked with a 'C' and 'de' and contains a series of notes with stems. The fourth staff continues the melodic line with notes and rests, ending with a double bar line and a decorative flourish.

Handwritten musical score, second system. It consists of four staves. The first staff begins with a treble clef, a key signature of two sharps (F# and C#), and a 3/8 time signature. The notation includes various note values, rests, and bar lines. The second staff contains a dense sequence of notes, possibly representing a keyboard accompaniment. The third staff is marked with a 'C' and 'de' and contains a series of notes with stems. The fourth staff continues the melodic line with notes and rests, ending with a double bar line and a decorative flourish.



Handwritten musical score on five systems of staves. The notation includes various notes, rests, and clefs.

The first system begins with a treble clef, a key signature of one sharp (F#), and a time signature of 2/4. It contains a melodic line with eighth and sixteenth notes, a bass line with chords, and a piano accompaniment with chords and a bass line. The system concludes with a double bar line and a fermata.

The second system starts with a treble clef, a key signature of two sharps (F# and C#), and a time signature of 5/4. It features a melodic line with eighth notes, a bass line with chords, and a piano accompaniment with chords and a bass line. The system ends with a double bar line and a fermata.

The third system begins with a treble clef, a key signature of one sharp (F#), and a time signature of 4/4. It contains a melodic line with eighth notes, a bass line with chords, and a piano accompaniment with chords and a bass line. The system concludes with a double bar line and a fermata.

The fourth system starts with a treble clef, a key signature of one sharp (F#), and a time signature of 4/4. It features a melodic line with eighth notes, a bass line with chords, and a piano accompaniment with chords and a bass line. The system ends with a double bar line and a fermata.

The fifth system is empty.

The sixth system is empty.

The seventh system is empty.

The eighth system is empty.

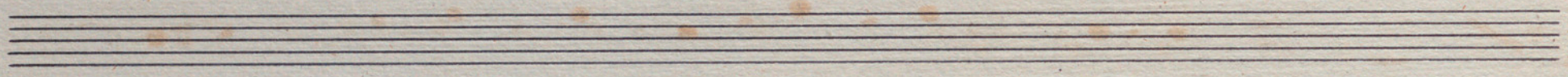
Soprano en bois - Rigodon - Cello.



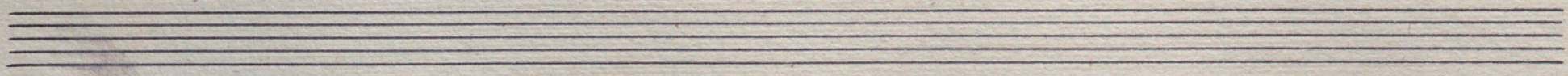
Handwritten musical score for Rigodon, featuring two parts: Soprano en bois and Cello. The score is written on ten staves. The first part (Soprano en bois) is in 2/4 time with a key signature of two sharps (F# and C#). It begins with a treble clef and a first ending bracket. The second part (Cello) is in 2/4 time with a key signature of two sharps. It begins with a bass clef and a first ending bracket. The score includes various musical notations such as notes, rests, and bar lines. The word "Coda" is written above the second staff, and "Fin" is written above the third and sixth staves. The piece concludes with a double bar line and a repeat sign.

Handwritten musical notation on a single staff. The key signature is one sharp (F#) and the time signature is 3/8. The notation includes a treble clef, a key signature change to one sharp, and a series of notes with slurs and a fermata.

Handwritten musical notation on two staves. The top staff begins with a treble clef and a key signature of one sharp. The word "Coda" is written above the first few notes. The bottom staff continues the melody with slurs and a fermata. The word "Fin" is written at the end of the second staff.



Handwritten musical notation on four staves. The top staff begins with a treble clef and a key signature of one sharp. The word "Fin" is written above the first few notes. The notation includes various note values, slurs, and a fermata. The bottom staff concludes with a double bar line and a final cadence.



5

Handwritten musical score on ten staves. The score includes a treble clef, a key signature of one sharp (F#), and a 2/4 time signature. It features various musical notations such as notes, rests, and bar lines. Key annotations include "Coda" above the second staff, "Fin" above the third staff, and "1, 3 y 5" below the third staff. The piece concludes with "à la" followed by a decorative flourish on the sixth and eighth staves.

Pipe en bois =

Bigoillon =

Contrabajo



Handwritten musical score for three instruments: Pipe en bois, Bigoillon, and Contrabajo. The score is written on seven staves. The first system (staves 1-3) begins with a treble clef, a key signature of two sharps (F# and C#), and a 2/2 time signature. It features a variety of note values including quarter, eighth, and sixteenth notes, as well as rests. The second system (staves 4-6) starts with a new key signature of three sharps (F#, C#, and G#) and a 2/2 time signature. The notation includes complex rhythmic patterns and rests. The score concludes with a double bar line and a 'C' time signature.

Handwritten musical score for the first system, consisting of four staves. The first staff begins with a treble clef, a key signature of one sharp (F#), and a 6/8 time signature. The notation includes various note values, rests, and slurs. A large, decorative flourish is written above the first staff. The second and third staves contain rhythmic patterns with notes and rests. The fourth staff concludes the system with a double bar line and a repeat sign.

Handwritten musical score for the second system, consisting of four staves. The first staff begins with a treble clef, a key signature of one sharp (F#), and a 2/4 time signature. The notation includes notes, rests, and slurs. A large, decorative flourish is written above the first staff. The second and third staves contain rhythmic patterns with notes and rests. The fourth staff concludes the system with a double bar line and a repeat sign.

Handwritten musical score on a page with five systems of staves. The notation is in a cursive style.

The first system consists of two staves. The top staff begins with a treble clef, a key signature of one sharp (F#), and a time signature of 2/4. It contains several measures of music with notes and rests, ending with a double bar line and a fermata. The bottom staff of the first system contains notes with stems, some with a sharp sign, and rests.

The second system also consists of two staves. The top staff begins with a treble clef, a key signature of two sharps (F# and C#), and a time signature of 2/4. It contains several measures of music with notes and rests, ending with a double bar line and a fermata. The bottom staff contains notes with stems and rests.

The third system consists of two staves. The top staff begins with a treble clef, a key signature of two sharps (F# and C#), and a time signature of 2/4. It contains several measures of music with notes and rests, ending with a double bar line and a fermata. The bottom staff contains notes with stems and rests.

The fourth system consists of two staves. The top staff begins with a treble clef, a key signature of one flat (Bb), and a time signature of 2/4. It contains several measures of music with notes and rests, ending with a double bar line and a fermata. The bottom staff contains notes with stems and rests.

The fifth system consists of two staves, both of which are empty.