

Junta de Gobierno  
de la Real Academia  
de San Fernando del Teatro

Eno Balazis Flauta

Musical score for Flute, titled "Eno Balazis Flauta". The score is written on ten staves. The first staff begins with the tempo marking "Allegro" and the time signature "2/4". The second staff contains a first ending bracket labeled "8". The fifth staff begins with the tempo marking "Adagio" and the time signature "3/8". The score concludes with a double bar line and a fermata on the final note of the tenth staff.

Mazurka

Salm



Junta de Gobierno  
de la Sociedad  
del Teatro del Liceo

Trio Balazis Clarinete

On la

All Ho

Handwritten musical notation for the first piece, 'On la', in 2/4 time. It consists of five staves of music with various notes, rests, and slurs.

Walse

Handwritten musical notation for the second piece, 'Walse', in 3/4 time. It consists of ten staves of music with various notes, rests, and slurs.

Mazurka

Musical notation for Mazurka, first staff.

Musical notation for Mazurka, second staff.

Musical notation for Mazurka, third staff, ending with the instruction *Cambia en si b*.

Valse

Musical notation for Valse, first staff.

Musical notation for Valse, second staff.

Musical notation for Valse, third staff.

Musical notation for Valse, fourth staff.

Musical notation for Valse, fifth staff.

Musical notation for Valse, sixth staff, beginning with the instruction *Lento*.

Empty musical staves at the bottom of the page.

A page of handwritten musical notation on ten staves. The notation includes various note values, rests, and dynamic markings. The first staff begins with a treble clef and a key signature of one sharp (F#). The second staff contains a sharp sign (#) above a note. The fifth staff has a dynamic marking of *fp* above a double bar line. The sixth staff has a *t* marking above a note and an *ot* marking above a note. The seventh staff has a *rall.* marking below the staff. The eighth staff has a *fp* marking above a double bar line. The ninth staff has a *presses* marking above the staff. The notation is written in dark ink on aged, slightly yellowed paper.

Junta a Guiller  
de la Sociedad  
del Teatro del Liceo

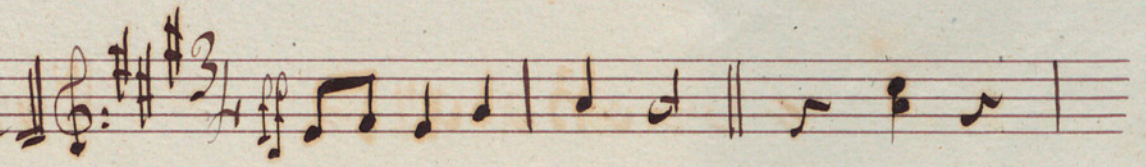
Erno Balazs

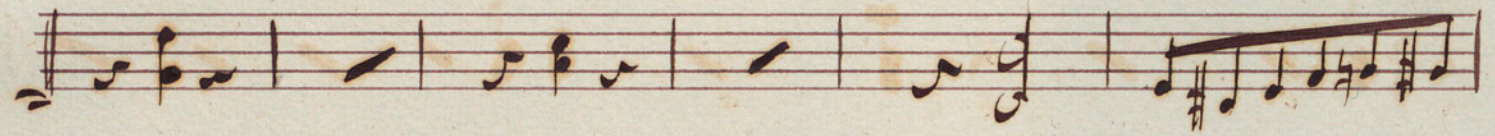
Cors in fa

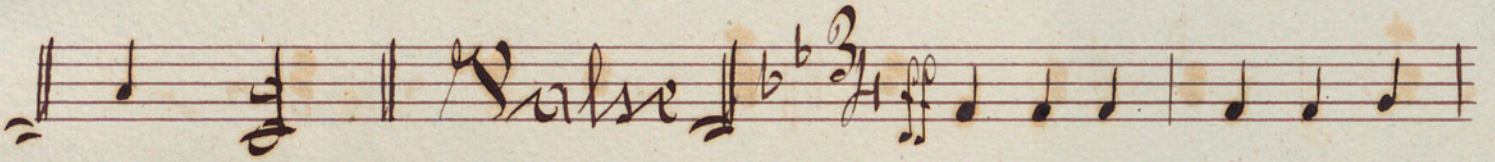
Allg  $\text{G}$   $\text{F}$   $\text{C}$   $\text{2}$

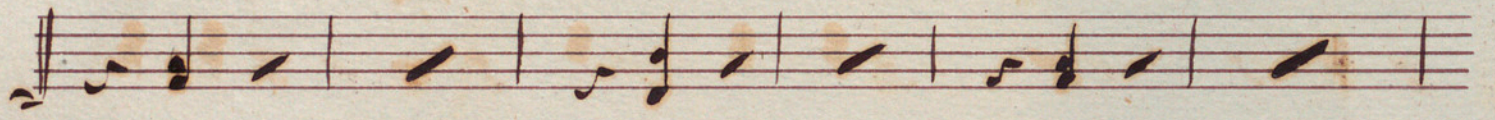
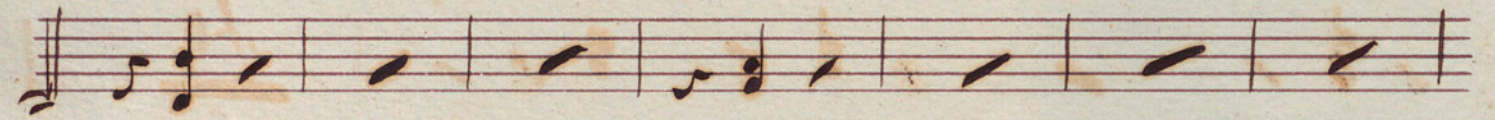
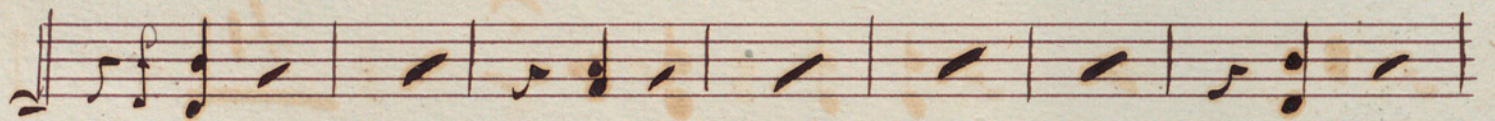
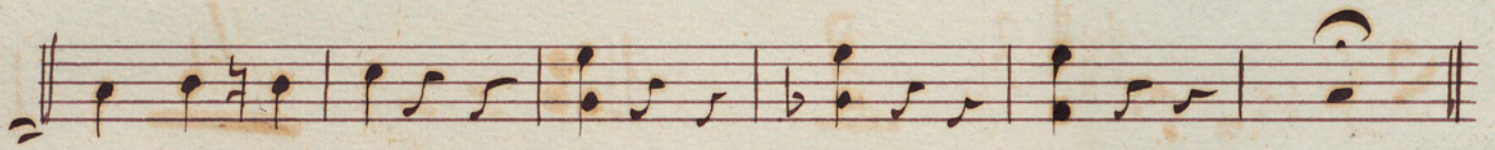
Valse  $\text{F}\#\text{C}\#\text{G}\#$   $\text{3}$ / $\text{4}$

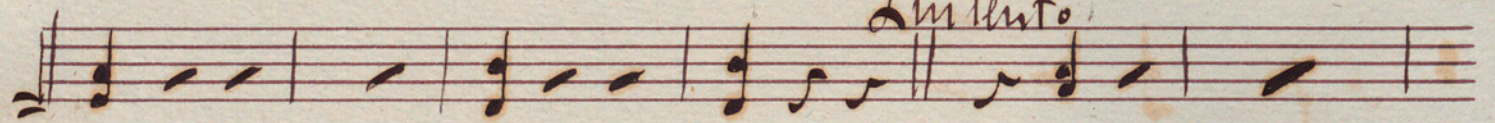
*Handwritten signature*

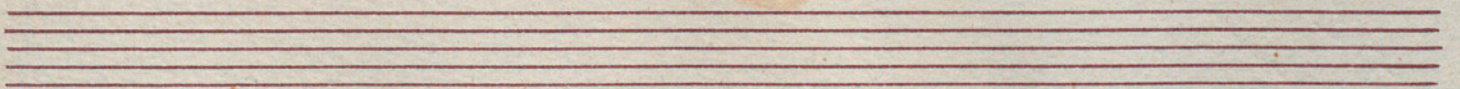
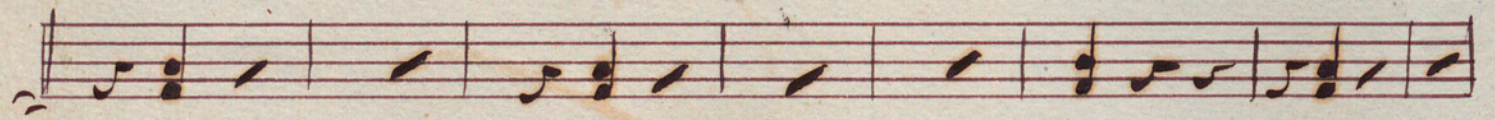
Mazurka 



 Valse



*Lento*  






Handwritten musical notation on a single staff, featuring a sequence of eighth and sixteenth notes.

Handwritten musical notation on a single staff, including a double bar line, a fermata, and a key signature change to one sharp.

Handwritten musical notation on a single staff, continuing the melodic line with various note values.

Handwritten musical notation on a single staff, showing a continuation of the piece with a key signature change to two sharps.

Handwritten musical notation on a single staff, featuring a *rall:* marking above the notes.

Handwritten musical notation on a single staff, including a double bar line and a fermata.

Handwritten musical notation on a single staff, continuing the melodic progression.

Handwritten musical notation on a single staff, showing a continuation of the piece.

Handwritten musical notation on a single staff, including a double bar line and a fermata.

Empty musical staff.

Empty musical staff.

Empty musical staff.

*Franz Balazs* = Corneta  $\text{F}^{\flat}$

En la = *Allg.*  $\text{F}^{\flat}$   $\frac{3}{4}$

Valze  $\text{F}^{\flat}$   $\frac{3}{4}$

Mazurka

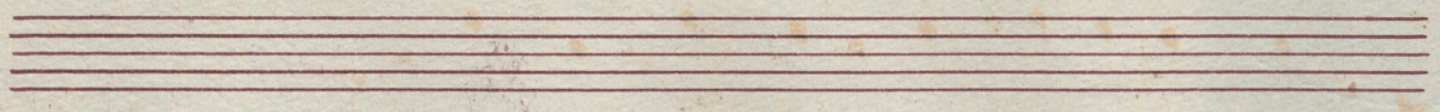
Handwritten musical notation for the Mazurka piece, consisting of five staves of music in 3/4 time with a key signature of one flat. The notation includes various note values, rests, and phrasing slurs.

Cambia Sol

8. 1/8

Walse

Handwritten musical notation for the Walse piece, consisting of five staves of music in 3/4 time with a key signature of one flat. The notation includes various note values, rests, and phrasing slurs.



Plus lent

Handwritten musical score on ten staves. The notation includes various note values, rests, and dynamic markings. The first staff begins with a treble clef and a key signature of one sharp (F#). The tempo marking "Plus lent" is written above the first staff. A dynamic marking "mf" is written below the first staff. The second staff contains a long, sweeping melodic line. The third and fourth staves continue the melodic development with various note values and rests. The fifth staff shows a change in the melodic line. The sixth staff features a key signature change to one flat (Bb). The seventh staff has a dynamic marking "rall:" written below it. The eighth staff has a dynamic marking "p<sup>o</sup>" written above it. The ninth and tenth staves continue the melodic line. The score concludes with a double bar line and a fermata on the final note.

Ministerio de Gobierno  
de la Sociedad  
Teatro del Liceo

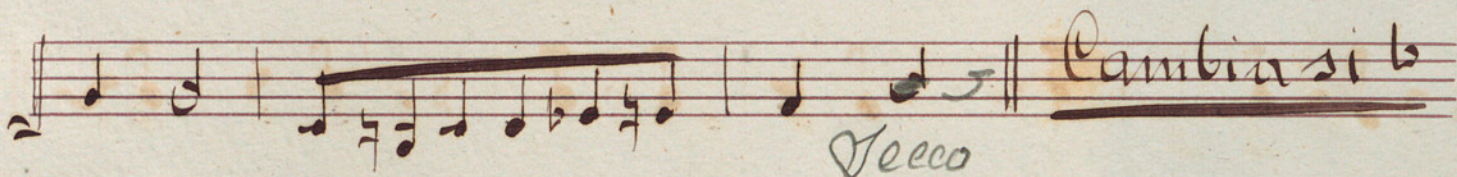
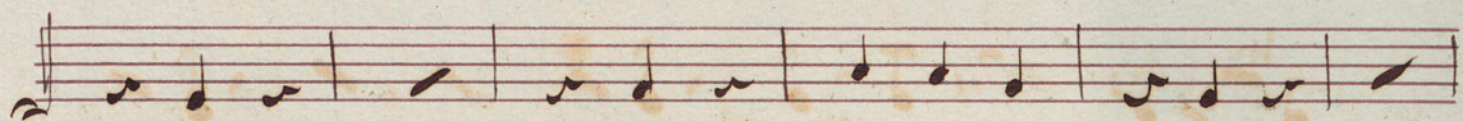
Erno Balazs      Cornetas 2<sup>o</sup> en la

Allegro

Valse

R. P.

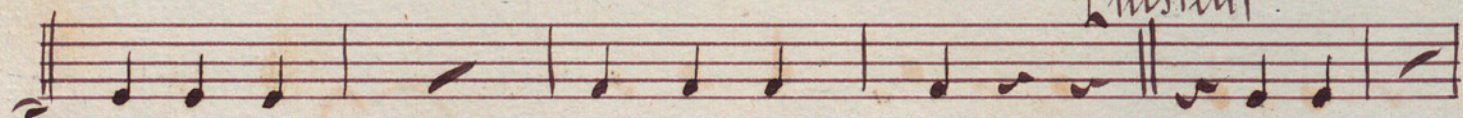
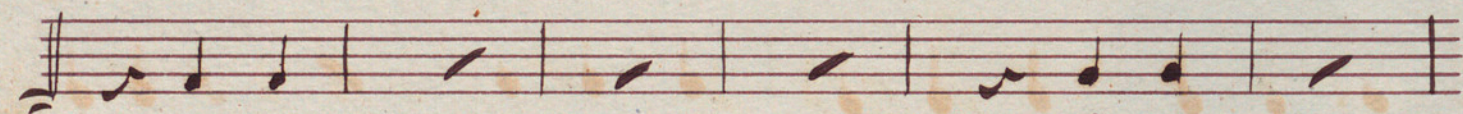
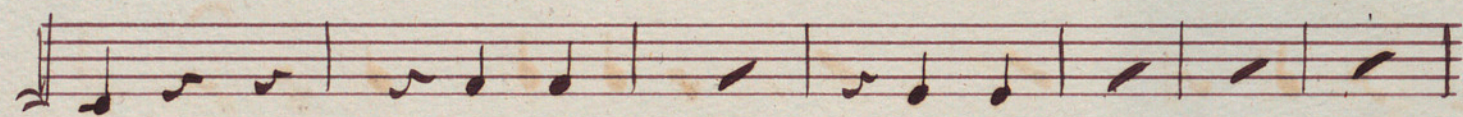
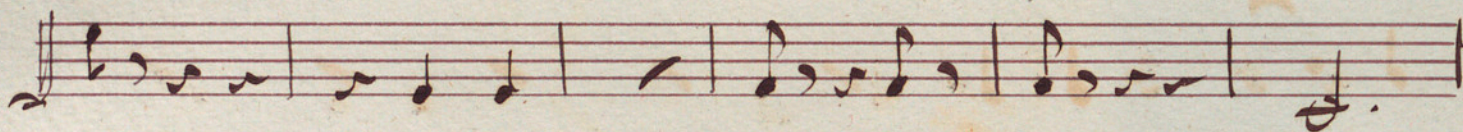
Mazurka



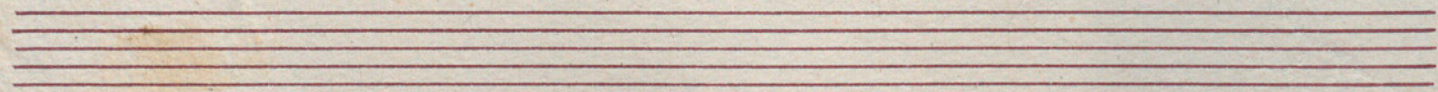
Valse

*Tecco*

*Cambia si*



*Plus lent*



This image shows a page of handwritten musical notation on aged, yellowed paper. The score consists of 12 staves of music, followed by three empty staves at the bottom. The notation is written in dark ink and includes various musical symbols such as notes, rests, and clefs. The music is organized into measures by vertical bar lines. There are some annotations in the score, including the word "rall:" written in the sixth staff and "fp" written above the eighth staff. The paper shows signs of age, with some foxing and staining, particularly near the top and bottom edges.

Biblioteca de Goshlon  
Sociedade do Teatro do Liceo

Erno Balazs Trombon

All.  
Valse



Mazurka

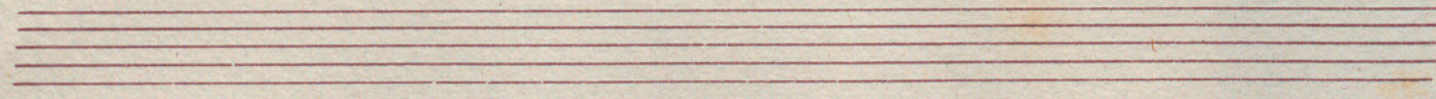
Handwritten musical notation for the Mazurka section, consisting of three staves of music. The first staff begins with a treble clef, a key signature of one sharp (F#), and a 3/4 time signature. The music is written in a cursive hand with various note values and rests.

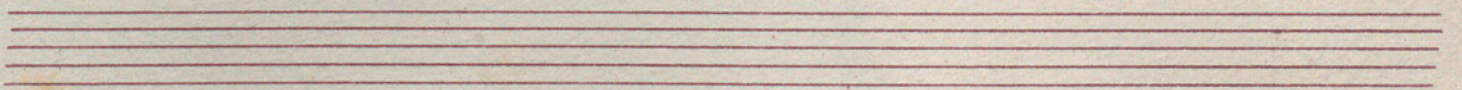
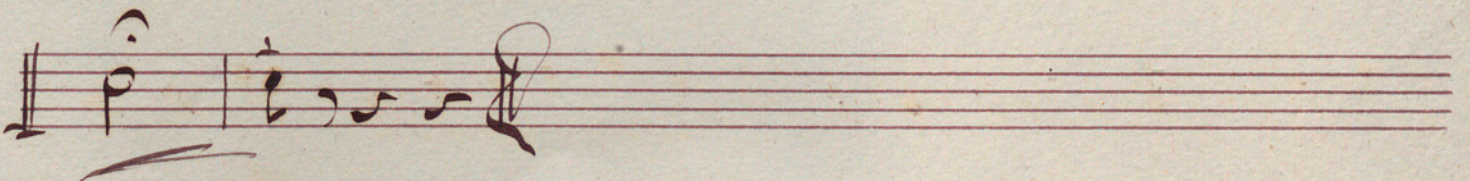
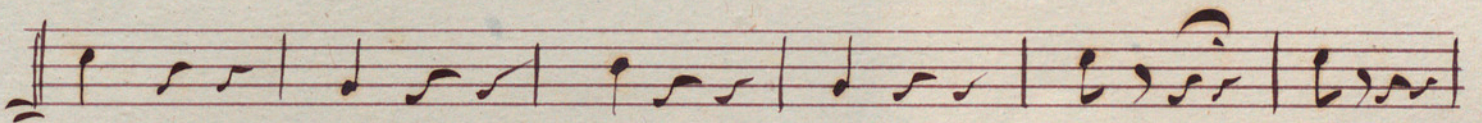
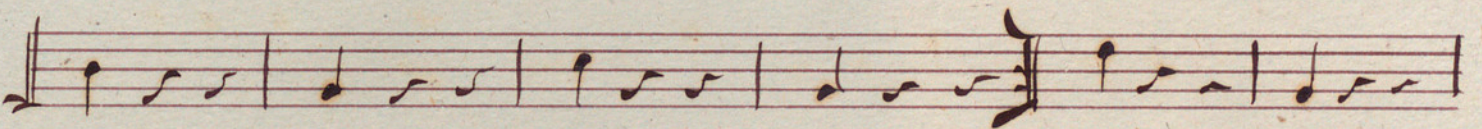
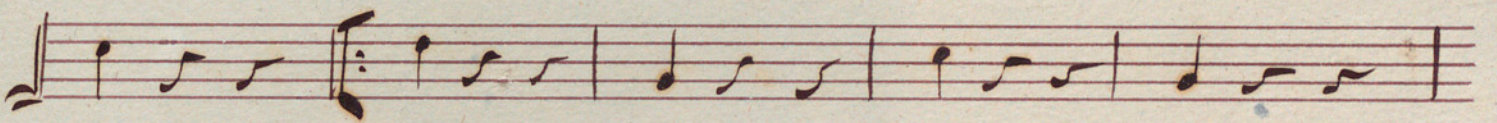
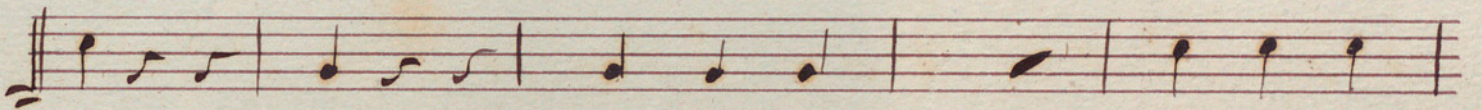
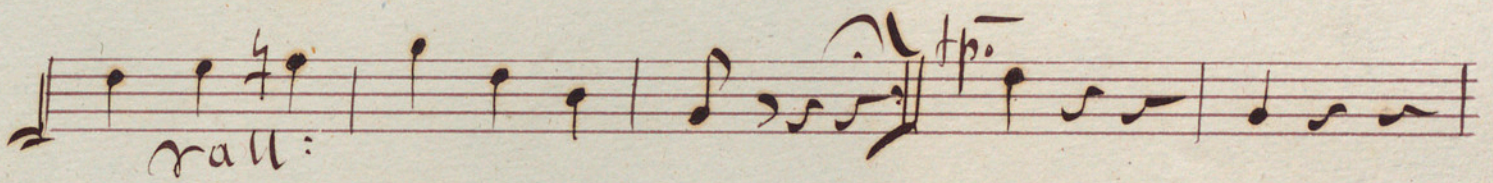
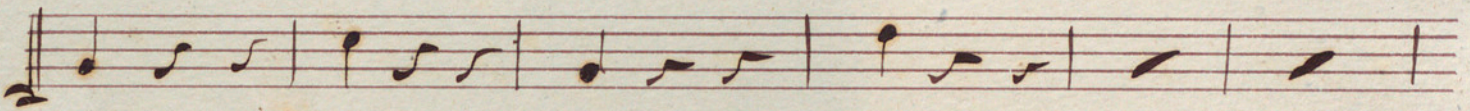
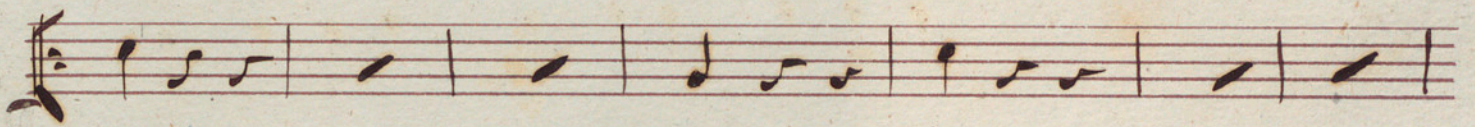
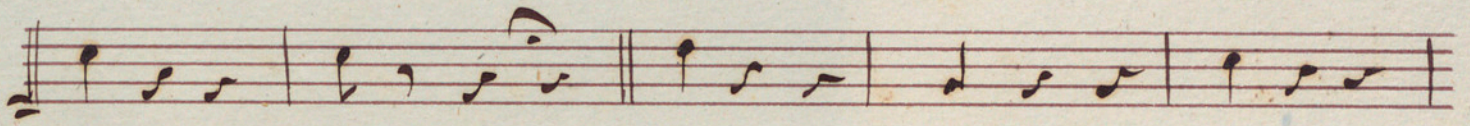
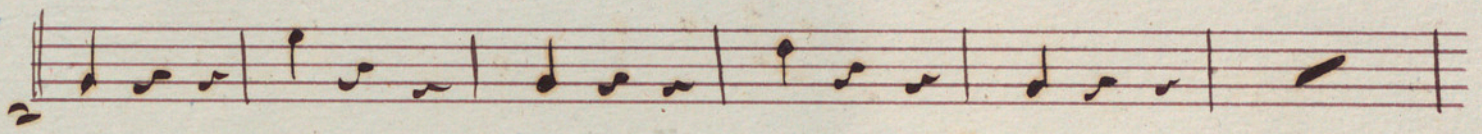
Valze

Handwritten musical notation for the Valze section, consisting of seven staves of music. The first staff begins with a treble clef, a key signature of one flat (Bb), and a 3/4 time signature. The notation includes various rhythmic patterns and rests.

*Lento*

Handwritten musical notation for the Lento section, consisting of two staves of music. The first staff begins with a treble clef and a 3/4 time signature. The music is written in a cursive hand with various note values and rests.





Biblioteca del Teatro della Scala

# Trio Balazi = Ficcorno

All:  $\frac{3}{4}$

Valse  $\frac{3}{4}$

Mazurka

Musical notation for Mazurka, first staff.

Musical notation for Mazurka, second staff.

Musical notation for Mazurka, third staff.

Waltz

Musical notation for Waltz, first staff.

Musical notation for Waltz, second staff.

Musical notation for Waltz, third staff.

Musical notation for Waltz, fourth staff.

Musical notation for Waltz, fifth staff.

Lento

Musical notation for Lento, first staff.

Empty musical staves at the bottom of the page.

Handwritten musical notation on a single staff, featuring a series of notes with a long horizontal slur above them.

Handwritten musical notation on a single staff, showing a sequence of notes and rests.

Handwritten musical notation on a single staff, continuing the melodic line.

Handwritten musical notation on a single staff, including dynamic markings such as *pp* and *p*.

Handwritten musical notation on a single staff, featuring a series of notes.

Handwritten musical notation on a single staff, with the word *rall.* written below the notes.

Handwritten musical notation on a single staff, starting with a dynamic marking of *pp*.

Handwritten musical notation on a single staff, showing a sequence of notes.

Handwritten musical notation on a single staff, continuing the melodic line.

Handwritten musical notation on a single staff, featuring a series of notes.

Handwritten musical notation on a single staff, including a dynamic marking of *pp*.

Four empty musical staves at the bottom of the page.

Junta de Gobierno  
de la Sociedad  
Gran Teatro del Liceo

# Ennio Balazi

## Violin

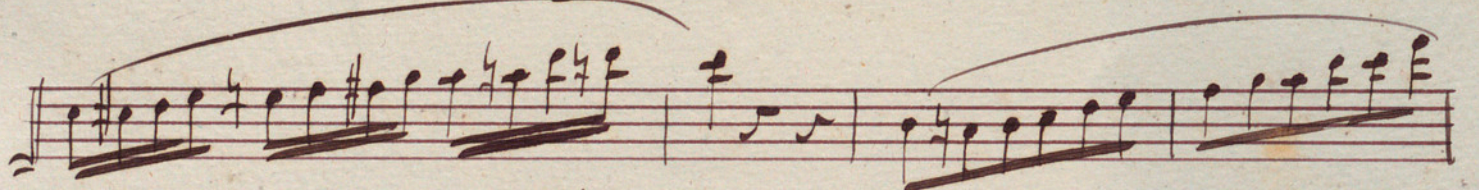
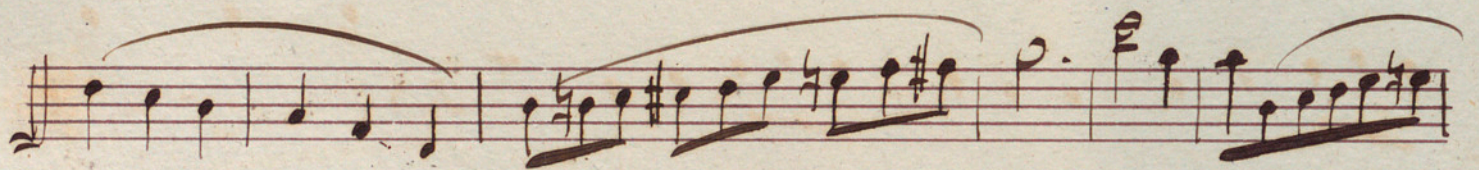
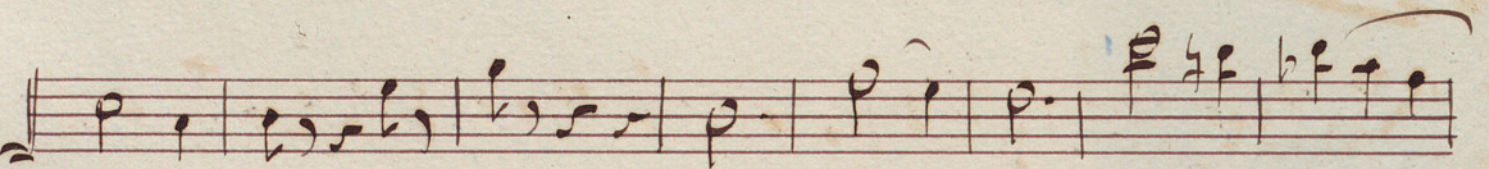
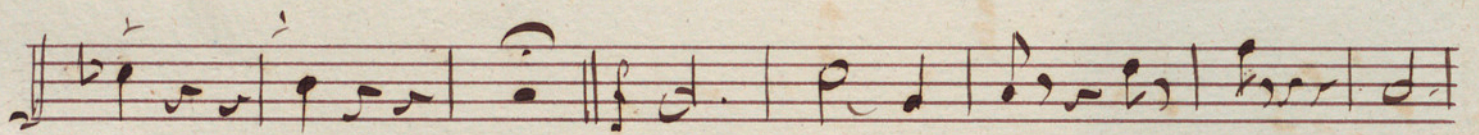
*Allg*  $\text{4/4}$

*Walse*  $\text{3/4}$

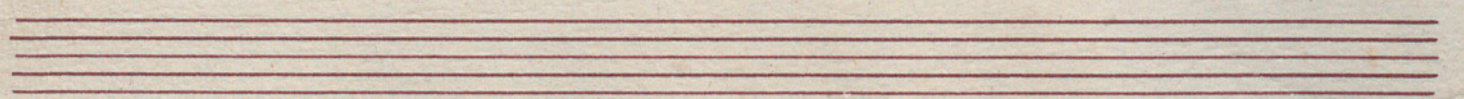
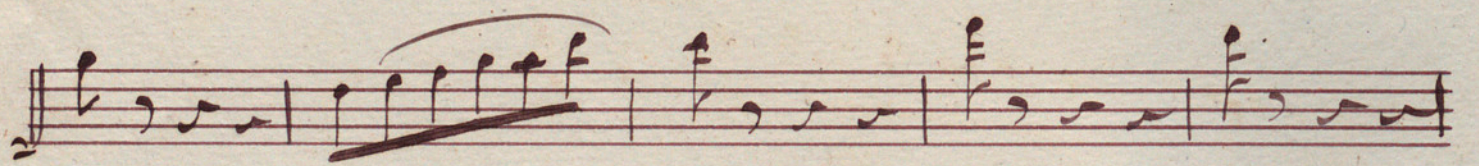
Naturka  $\text{3/4}$   $\text{F\#}$



Walse  $\text{3/4}$   $\text{Bb}$



Plus lent



Handwritten musical score on ten staves. The notation includes various rhythmic values, accidentals, and dynamic markings. The score is written in a cursive style with some corrections and annotations.

Annotations and markings include:

- 8<sup>ta</sup>* (written above the first staff)
- 8<sup>ta</sup>* (written above the second staff)
- 8<sup>ta</sup>* (written above the third staff)
- 8<sup>ta</sup>* (written above the fourth staff)
- 8<sup>ta</sup>* (written above the fifth staff)
- 8<sup>ta</sup>* (written above the sixth staff)
- 8<sup>ta</sup>* (written above the seventh staff)
- 8<sup>ta</sup>* (written above the eighth staff)
- 8<sup>ta</sup>* (written above the ninth staff)
- 8<sup>ta</sup>* (written above the tenth staff)
- 8<sup>ta</sup>* (written above the eleventh staff)
- 8<sup>ta</sup>* (written above the twelfth staff)
- 8<sup>ta</sup>* (written above the thirteenth staff)
- 8<sup>ta</sup>* (written above the fourteenth staff)
- 8<sup>ta</sup>* (written above the fifteenth staff)
- 8<sup>ta</sup>* (written above the sixteenth staff)
- 8<sup>ta</sup>* (written above the seventeenth staff)
- 8<sup>ta</sup>* (written above the eighteenth staff)
- 8<sup>ta</sup>* (written above the nineteenth staff)
- 8<sup>ta</sup>* (written above the twentieth staff)
- 8<sup>ta</sup>* (written above the twenty-first staff)
- 8<sup>ta</sup>* (written above the twenty-second staff)
- 8<sup>ta</sup>* (written above the twenty-third staff)
- 8<sup>ta</sup>* (written above the twenty-fourth staff)
- 8<sup>ta</sup>* (written above the twenty-fifth staff)
- 8<sup>ta</sup>* (written above the twenty-sixth staff)
- 8<sup>ta</sup>* (written above the twenty-seventh staff)
- 8<sup>ta</sup>* (written above the twenty-eighth staff)
- 8<sup>ta</sup>* (written above the twenty-ninth staff)
- 8<sup>ta</sup>* (written above the thirtieth staff)
- 8<sup>ta</sup>* (written above the thirty-first staff)
- 8<sup>ta</sup>* (written above the thirty-second staff)
- 8<sup>ta</sup>* (written above the thirty-third staff)
- 8<sup>ta</sup>* (written above the thirty-fourth staff)
- 8<sup>ta</sup>* (written above the thirty-fifth staff)
- 8<sup>ta</sup>* (written above the thirty-sixth staff)
- 8<sup>ta</sup>* (written above the thirty-seventh staff)
- 8<sup>ta</sup>* (written above the thirty-eighth staff)
- 8<sup>ta</sup>* (written above the thirty-ninth staff)
- 8<sup>ta</sup>* (written above the fortieth staff)
- 8<sup>ta</sup>* (written above the forty-first staff)
- 8<sup>ta</sup>* (written above the forty-second staff)
- 8<sup>ta</sup>* (written above the forty-third staff)
- 8<sup>ta</sup>* (written above the forty-fourth staff)
- 8<sup>ta</sup>* (written above the forty-fifth staff)
- 8<sup>ta</sup>* (written above the forty-sixth staff)
- 8<sup>ta</sup>* (written above the forty-seventh staff)
- 8<sup>ta</sup>* (written above the forty-eighth staff)
- 8<sup>ta</sup>* (written above the forty-ninth staff)
- 8<sup>ta</sup>* (written above the fiftieth staff)
- 8<sup>ta</sup>* (written above the fifty-first staff)
- 8<sup>ta</sup>* (written above the fifty-second staff)
- 8<sup>ta</sup>* (written above the fifty-third staff)
- 8<sup>ta</sup>* (written above the fifty-fourth staff)
- 8<sup>ta</sup>* (written above the fifty-fifth staff)
- 8<sup>ta</sup>* (written above the fifty-sixth staff)
- 8<sup>ta</sup>* (written above the fifty-seventh staff)
- 8<sup>ta</sup>* (written above the fifty-eighth staff)
- 8<sup>ta</sup>* (written above the fifty-ninth staff)
- 8<sup>ta</sup>* (written above the sixtieth staff)
- 8<sup>ta</sup>* (written above the sixty-first staff)
- 8<sup>ta</sup>* (written above the sixty-second staff)
- 8<sup>ta</sup>* (written above the sixty-third staff)
- 8<sup>ta</sup>* (written above the sixty-fourth staff)
- 8<sup>ta</sup>* (written above the sixty-fifth staff)
- 8<sup>ta</sup>* (written above the sixty-sixth staff)
- 8<sup>ta</sup>* (written above the sixty-seventh staff)
- 8<sup>ta</sup>* (written above the sixty-eighth staff)
- 8<sup>ta</sup>* (written above the sixty-ninth staff)
- 8<sup>ta</sup>* (written above the seventieth staff)
- 8<sup>ta</sup>* (written above the seventy-first staff)
- 8<sup>ta</sup>* (written above the seventy-second staff)
- 8<sup>ta</sup>* (written above the seventy-third staff)
- 8<sup>ta</sup>* (written above the seventy-fourth staff)
- 8<sup>ta</sup>* (written above the seventy-fifth staff)
- 8<sup>ta</sup>* (written above the seventy-sixth staff)
- 8<sup>ta</sup>* (written above the seventy-seventh staff)
- 8<sup>ta</sup>* (written above the seventy-eighth staff)
- 8<sup>ta</sup>* (written above the seventy-ninth staff)
- 8<sup>ta</sup>* (written above the eightieth staff)
- 8<sup>ta</sup>* (written above the eighty-first staff)
- 8<sup>ta</sup>* (written above the eighty-second staff)
- 8<sup>ta</sup>* (written above the eighty-third staff)
- 8<sup>ta</sup>* (written above the eighty-fourth staff)
- 8<sup>ta</sup>* (written above the eighty-fifth staff)
- 8<sup>ta</sup>* (written above the eighty-sixth staff)
- 8<sup>ta</sup>* (written above the eighty-seventh staff)
- 8<sup>ta</sup>* (written above the eighty-eighth staff)
- 8<sup>ta</sup>* (written above the eighty-ninth staff)
- 8<sup>ta</sup>* (written above the ninetieth staff)
- 8<sup>ta</sup>* (written above the hundredth staff)

rall

re

presser

loc

fine



Junta de Gobierno  
e la Sociedad  
Teatro del Liceo

Erno Borlazi

Violin 2<sup>o</sup>

*Allg.*

*Valse*

*bis*

M. P. M. M.

Mazurka

The first system of the Mazurka consists of three staves. The top staff begins with a treble clef, a key signature of two sharps (F# and C#), and a 3/4 time signature. The music is written in a single melodic line with various note values and rests.

Walse

The first system of the Walse consists of two staves. The top staff begins with a treble clef, a key signature of one flat (F), and a 3/4 time signature. The music is written in a single melodic line.

The second system of the Walse consists of one staff, continuing the melodic line from the first system.

The third system of the Walse consists of one staff, continuing the melodic line.

The fourth system of the Walse consists of one staff. It features a large section of the staff that is completely filled with a dense cross-hatched pattern, likely representing a correction or a specific performance instruction.

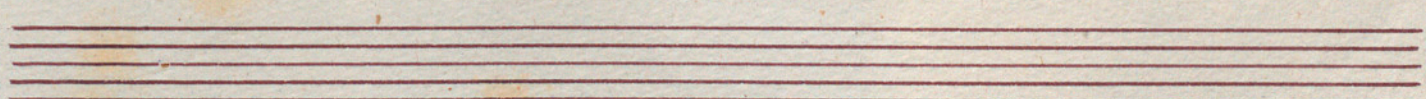
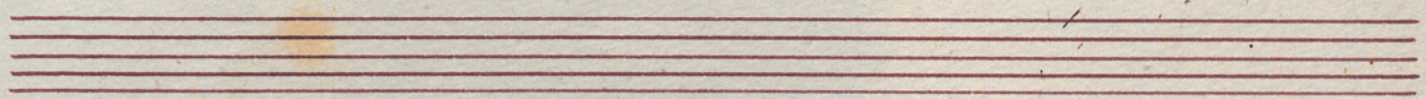
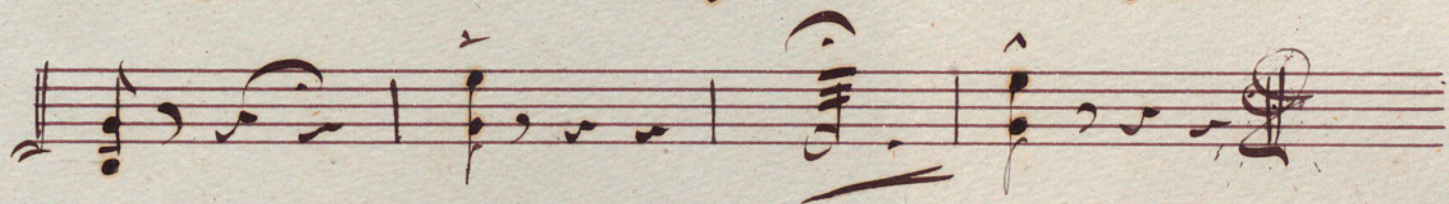
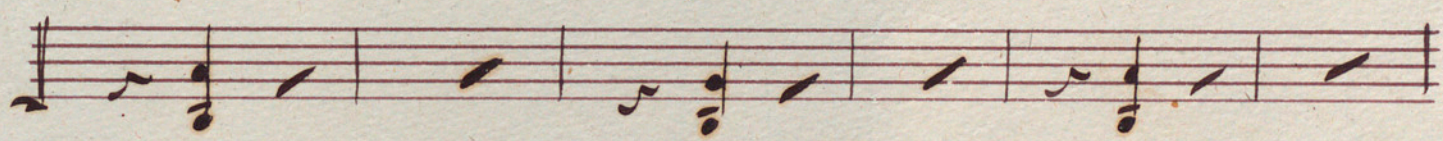
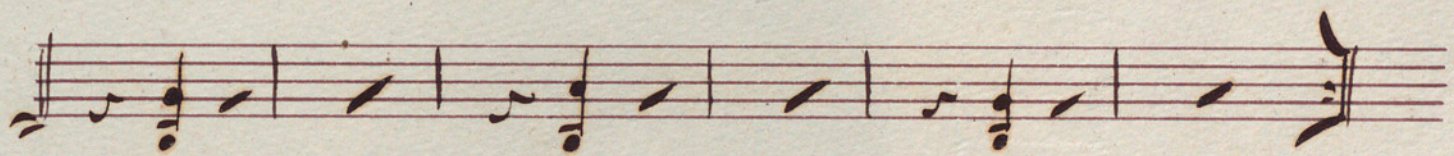
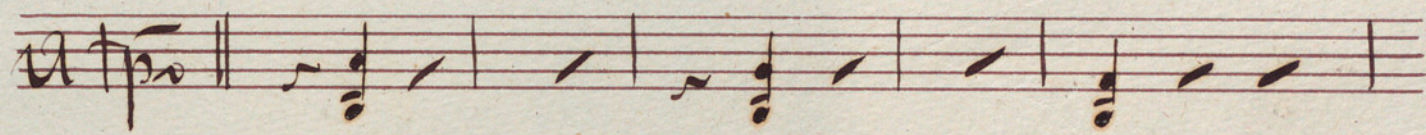
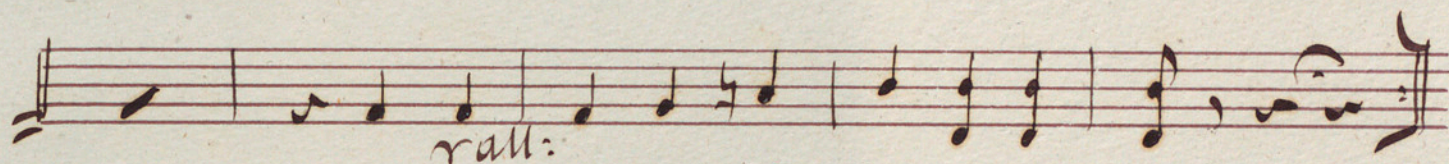
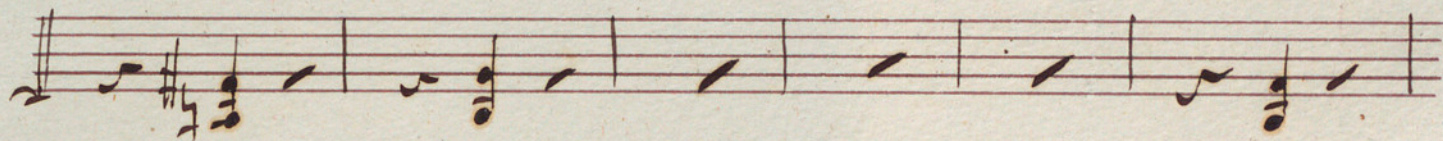
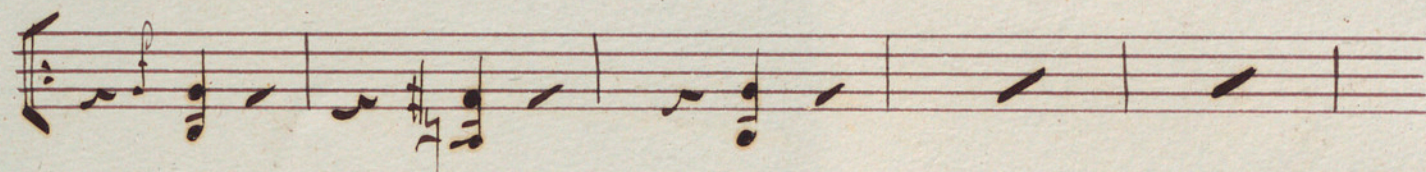
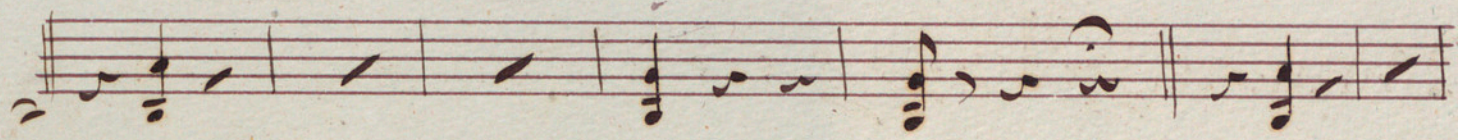
The fifth system of the Walse consists of one staff, continuing the melodic line.

Plus lent

The sixth system of the Walse consists of one staff. The tempo marking "Plus lent" is written above the first few notes of this system.

The seventh system of the Walse consists of one staff, continuing the melodic line.

Three empty musical staves are located at the bottom of the page, below the final system of notation.



Junta de Gobierno  
de la Sociedad  
del Teatro del Liceo

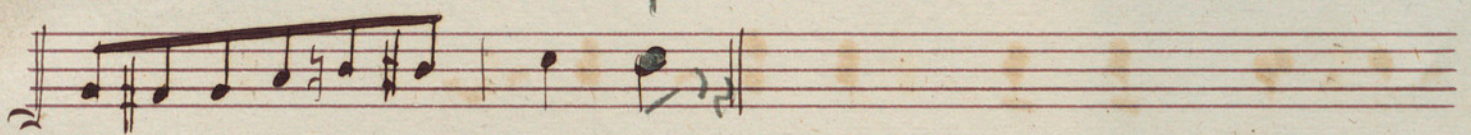
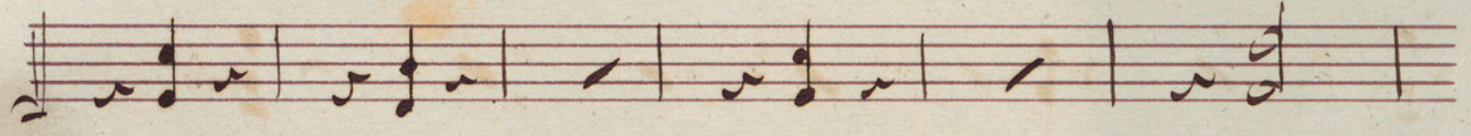
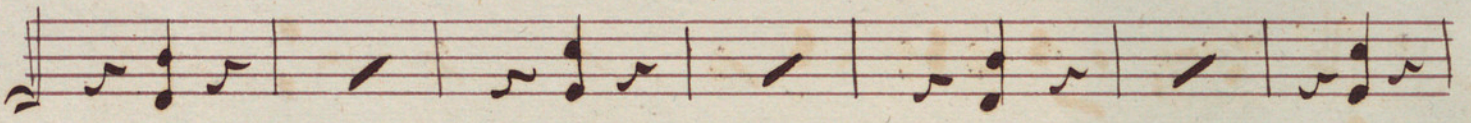
*Trio Balazis* *Alto*

*All.<sup>o</sup>*  $\text{2/4}$

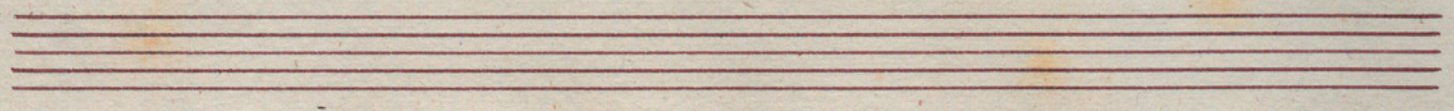
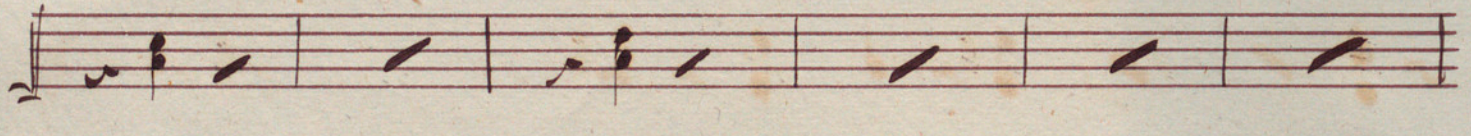
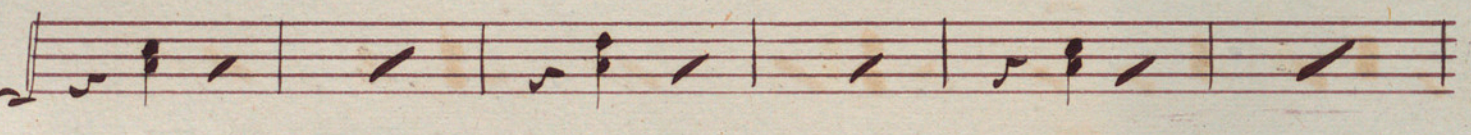
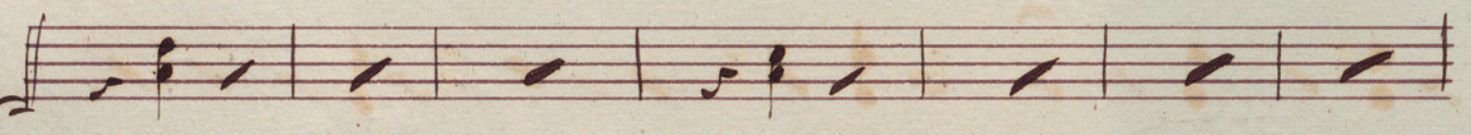
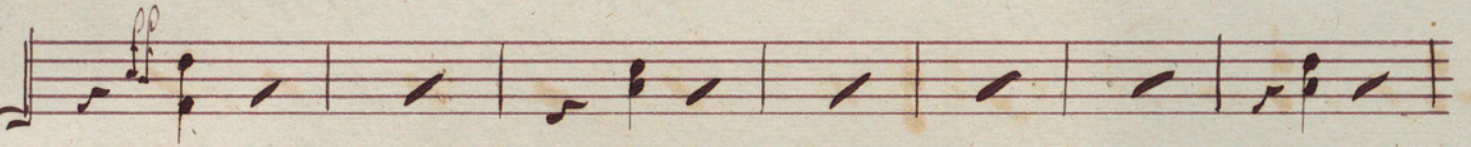
*Walse*  $\text{3/4}$

*V. Puro*

Mazurka



Walse



Plus lent

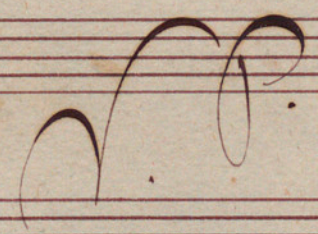
Handwritten musical score consisting of ten staves. The notation includes various notes, rests, and dynamic markings. The first staff begins with the tempo marking "Plus lent". The second staff features a slur over a sequence of notes. The seventh staff includes the marking "rall" and "p". The eighth staff includes the marking "presser". The final staff concludes with a double bar line and a fermata. Below the tenth staff are three empty staves.

Junta de Gobierno  
de la Sociedad  
del Teatro del Liceo

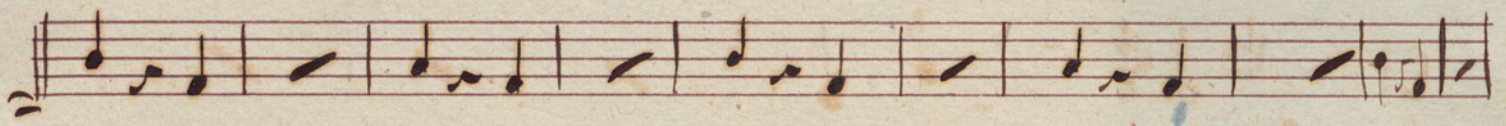
= Erno Balazsi = Bajo

Allegro

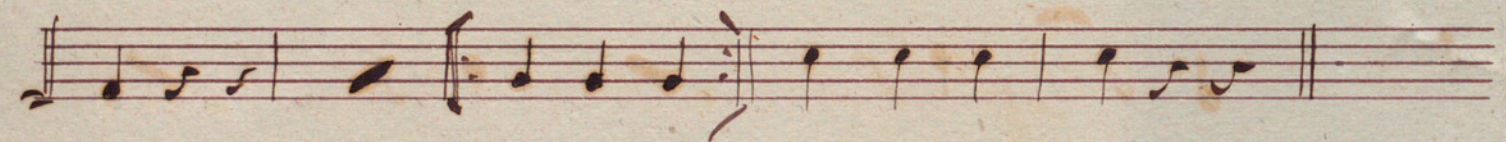
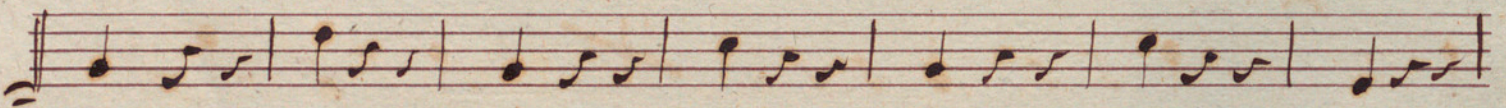
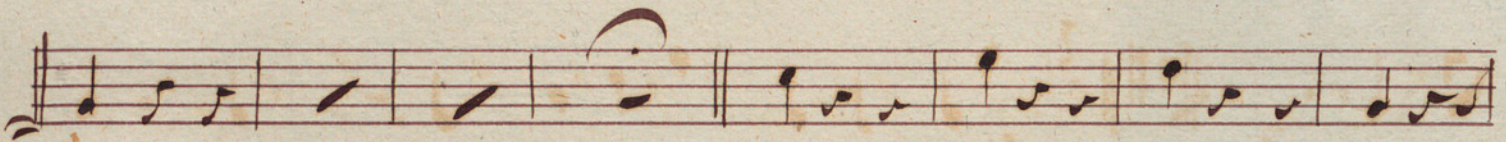
Valse



Mazurka 



Walse 



Plus lent 