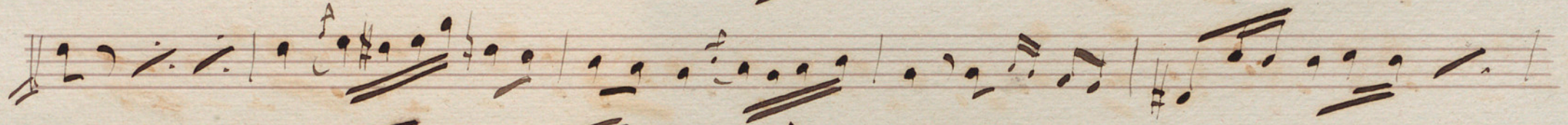
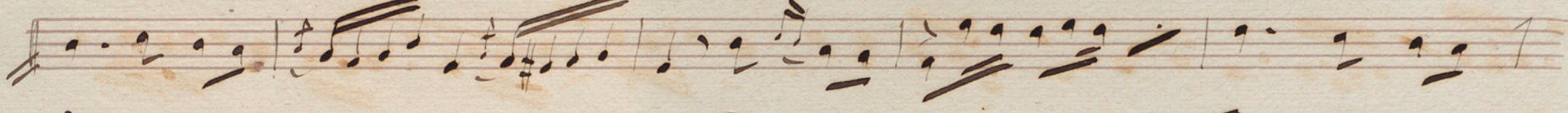




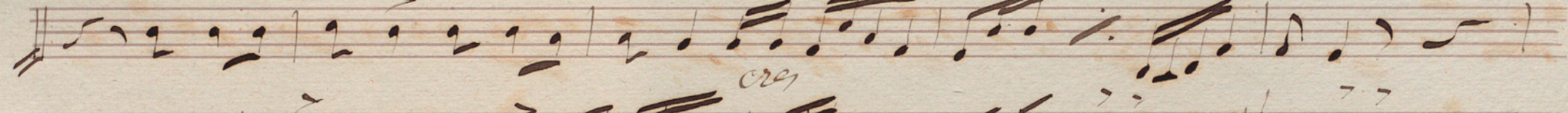
*Molto*  $\frac{3}{4}$  

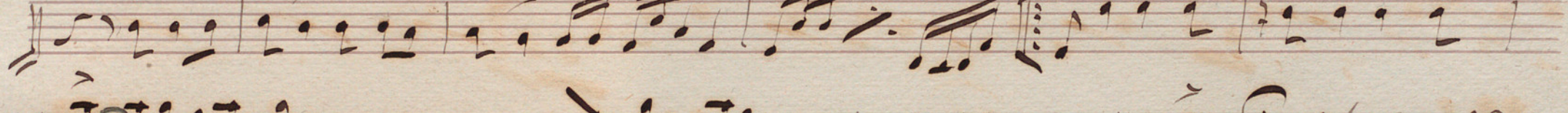


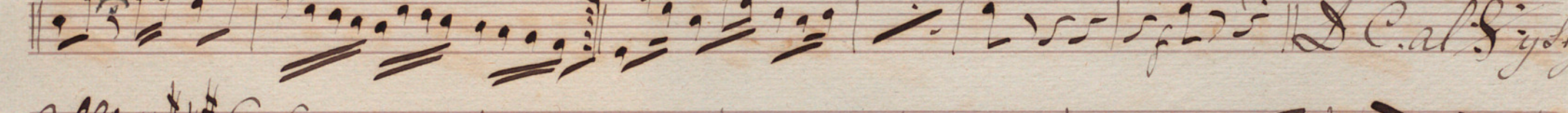


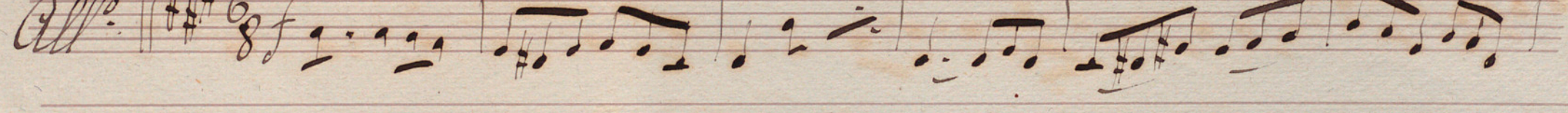










*All.<sup>o</sup>*  $\frac{3}{4}$   $f$  



*Cal. & S. ligne*

Handwritten musical score on eight staves. The notation includes various note values, rests, and clefs. The signature "J. C. Alty Sique" is written in the sixth staff. The word "cres" is written below the seventh staff. The eighth staff contains a few notes and a sharp sign.

Four empty musical staves at the bottom of the page.

Paso del Beso // Minuet de la Pedroma. Flauta.

All<sup>o</sup> Mo<sup>do</sup> *ff* *1<sup>a</sup>* *2<sup>a</sup>*

*Junta de la Sociedad  
Gran Teatro de  
del Liceo*

*And. C. y Sigue*

*rit*

*F. P.*

No 5<sup>te</sup> *S.*  $\frac{3}{4}$

*cres*

D. C. al. Sig. ligue

All<sup>o</sup>  $\frac{3}{8}$

Handwritten musical score on eight staves. The notation includes various note values, rests, and dynamic markings. The sixth staff contains the text "D. C. al Fine y segue" written in cursive. The seventh staff begins with "pp" and "era" markings. The eighth staff ends with a double bar line and a repeat sign.

Four empty musical staves at the bottom of the page.

Paso del Beso // Minuet de la Pedroma. Oboe.

Junta de Gobierno  
de la Sociedad  
del Gran Teatro del Liceo

All.<sup>o</sup> Moderato

Handwritten musical score for Oboe, consisting of ten staves of music. The notation includes treble clef, a key signature of one sharp (F#), and a 6/8 time signature. The music features various rhythmic patterns, including eighth and sixteenth notes, and rests. A 'rall.' marking is present on the eighth staff. The piece concludes with a double bar line on the tenth staff.

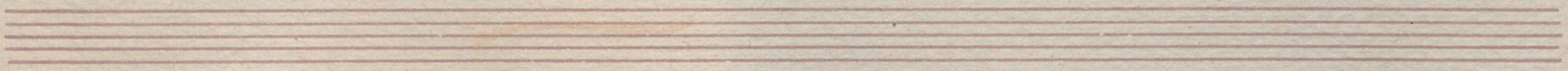
D. C.  
y sigue

V. P.

*Noctte*  $\text{3/4}$

*D. C. al Fine y Sique*

*Al Fine*  $\text{6/8}$





*p* *cres*

D. C. al Fine y segue



(En Do) Paso del Beso // Minuet de la Pedoma. Clarinete 1<sup>o</sup>

All<sup>o</sup> Mo<sup>do</sup> *f* <sup>1<sup>a</sup></sup>

D. C. y sigue *f*

*meno.* rit = ter dan do.

Junta de Gobierno  
de la Sociedad  
del Gran Teatro del Liceo

V. P.

*Molto*  $\text{♩}$   $\text{3}$

*D. C. al Fine y Sigue*

*Allegro*

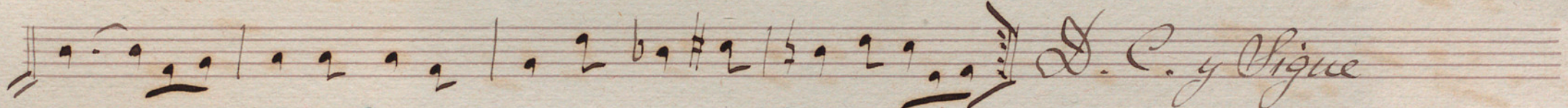
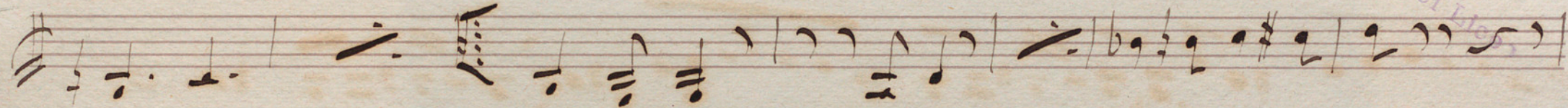
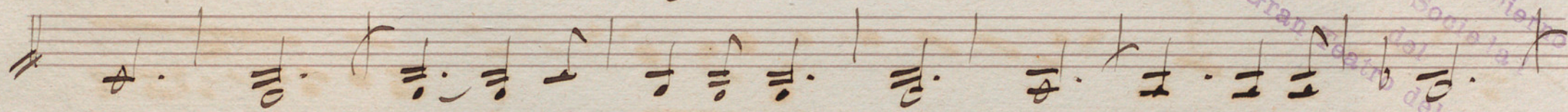
Handwritten musical score on seven staves. The first six staves contain a melodic line with various note values and rests. The seventh staff begins with the word "y ligue" and contains a series of notes with stems pointing upwards. The notation is in a historical style with a treble clef and a key signature of one sharp.

*Ad. P.  
aria.*

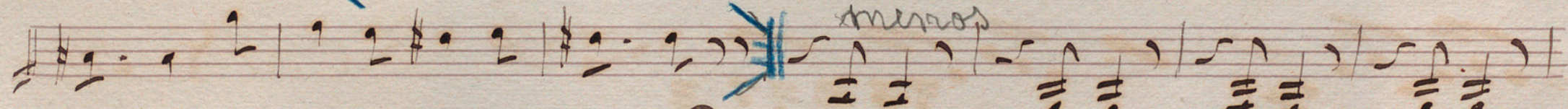
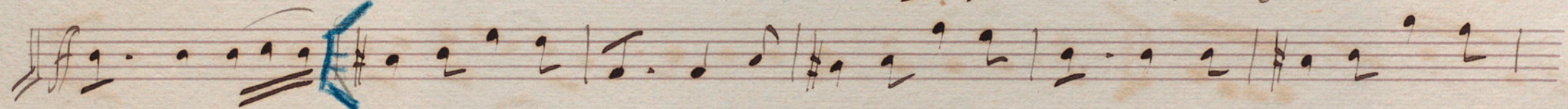


(En Do) Paso del Beso // Minuet de la Pedoma. Clarinete 2<sup>o</sup>

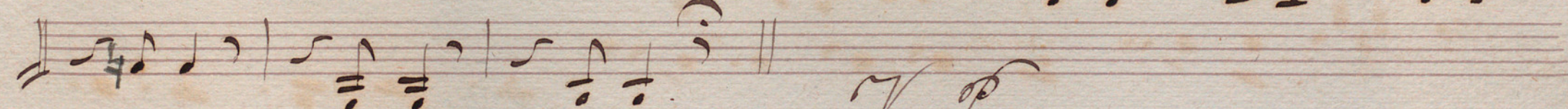
All<sup>o</sup> Mo<sup>do</sup>te



D. C. y Sigue



meno<sup>ro</sup>



J. N.

Junta de Gobierno  
de la Sociedad  
del Teatro del Liceo

*Mocette* § 3/4

D. C. al Fine y Sigue

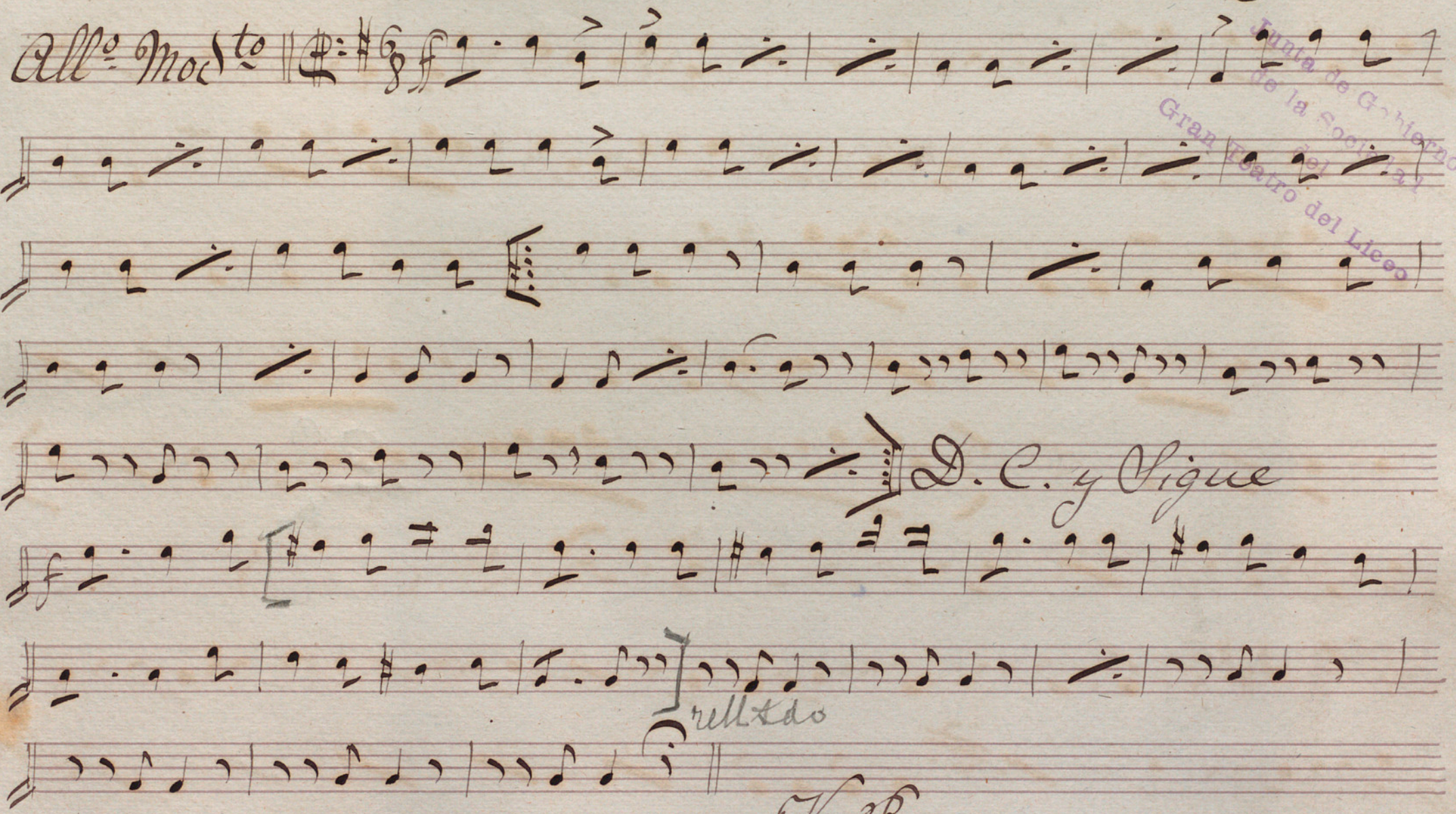
*Allo*



Handwritten musical score on eight staves. The notation includes various note values, rests, and accidentals. The seventh staff contains the instruction "D. C. al Fine y Sigue" and the eighth staff ends with a double bar line and a sharp sign.

Four empty musical staves at the bottom of the page.

Paso del Beso // Minuet de la Sedoma. Fagotes.

All<sup>o</sup> Mod<sup>to</sup> || 

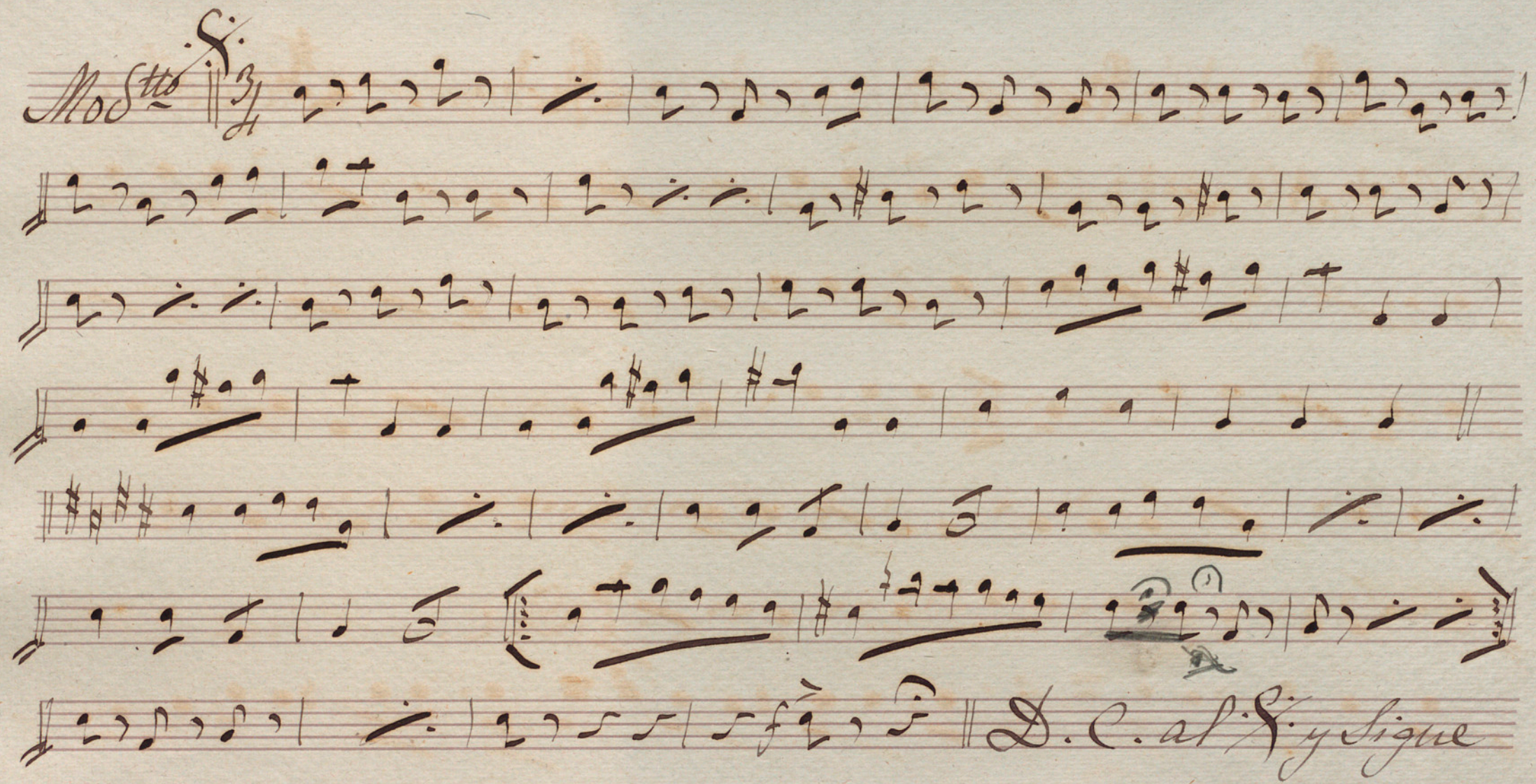
D. C. y Sigue

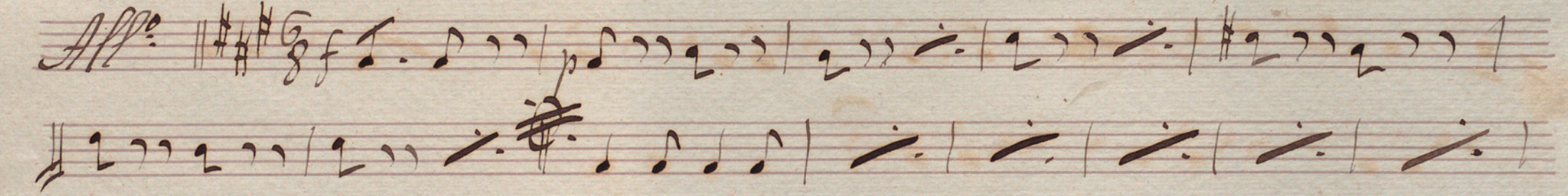
*ritard*

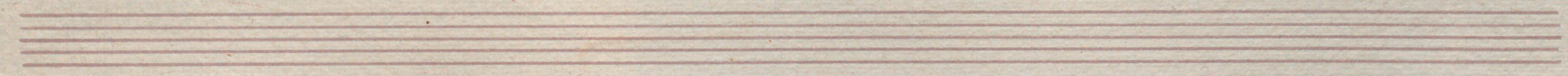
*de la*

Junta de Gobierno  
de la Sociedad  
del Teatro del Liceo



*Mod<sup>to</sup>*  $\text{3/4}$  

*All<sup>o</sup>*  $\text{3/8}$  



Handwritten musical score on eight staves. The notation includes various note values, rests, and dynamic markings. A section is marked "D. C. al Fine y Sique" with a key signature change to one sharp and dynamic markings "p" and "cres".

(En Sol) Paso del Beso // Minuet de la Pedoma. Trompa 1<sup>a</sup>

All: Mod<sup>to</sup> *A*

*Da Capo*

*A*

Junta de Gobierno  
de la Soberanía  
del Gran Teatro del Liceo

V.P.

*Moderato*  $\text{3/4}$   $\underline{3}$  | 1 2 3 4 5 6 7 8 9 10 11 12

1 2 3 4 5 6 7 8 9 10 11 12

1 2 3 4 5 6 7 8 9 10 11 12

1 2 3 4 5 6 7 8 9 10 11 12

1 2 3 4 5 6 7 8 9 10 11 12

1 2 3 4 5 6 7 8 9 10 11 12

*Allegro*  $\text{6/8}$  | 1 2 3 4 5 6 7 8 9 10 11 12

1 2 3 4 5 6 7 8 9 10 11 12

1 2 3 4 5 6 7 8 9 10 11 12

Empty musical staves at the bottom of the page.

Handwritten musical notation on a single staff, featuring various rhythmic values and accidentals.

Handwritten musical notation on a single staff, featuring various rhythmic values and accidentals.

Handwritten musical notation on a single staff, featuring various rhythmic values and accidentals.

Handwritten musical notation on a single staff, featuring various rhythmic values and accidentals, followed by the instruction: *D. Cal. y sigue*

Handwritten musical notation on a single staff, featuring various rhythmic values and accidentals, with dynamic markings *p. ....*, *crep.*, and *f*.

Handwritten musical notation on a single staff, featuring various rhythmic values and accidentals.

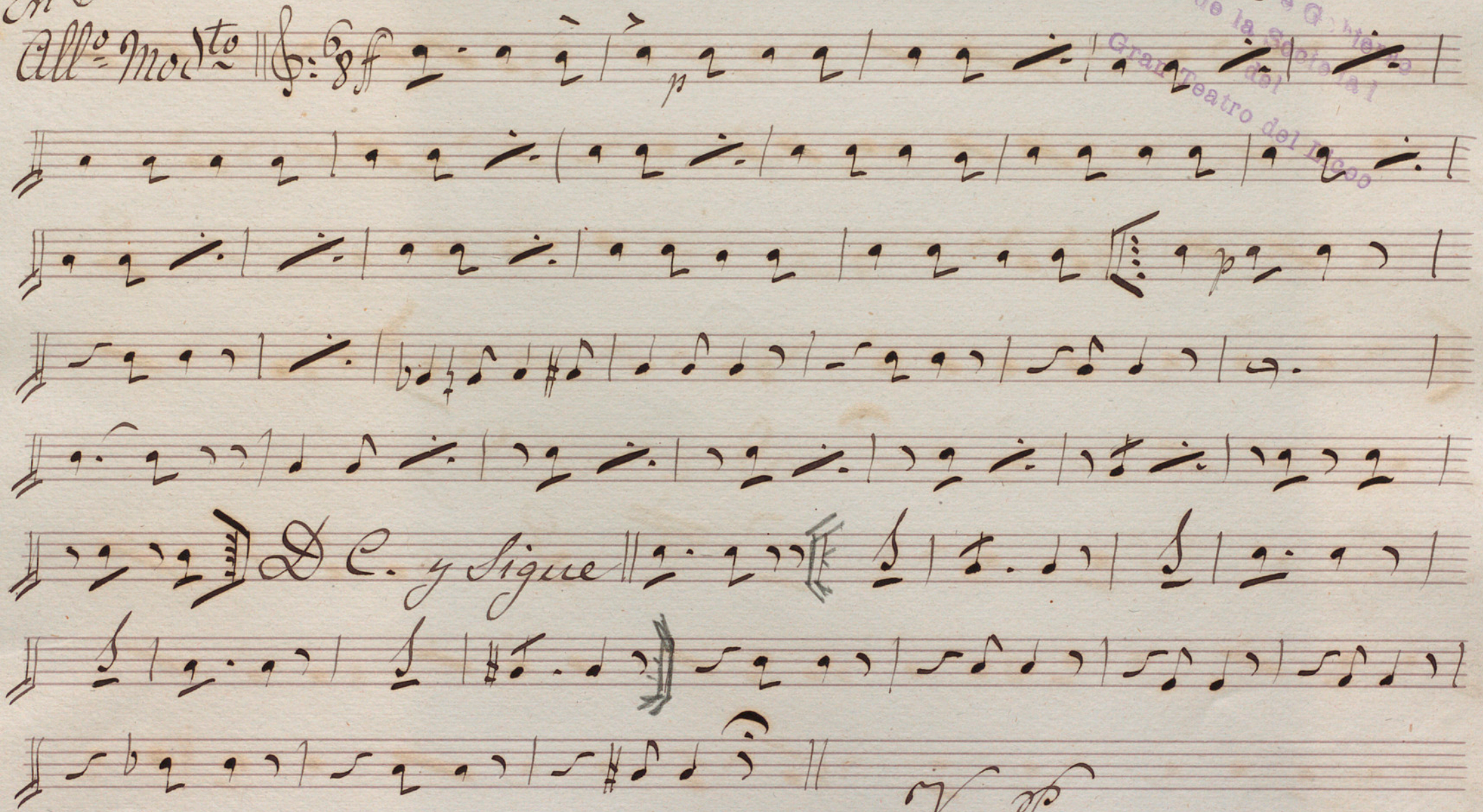
Empty musical staff.

Empty musical staff.

Empty musical staff.

Empty musical staff.

(En Sol) Paso del Beso // Minuet de la Pedroma. Trompa 2<sup>a</sup>

All<sup>o</sup> Mod<sup>to</sup> 

*F. No.*

Junta de Gobierno  
de la Sociedad  
del Gran Teatro del P<sup>o</sup>

Moderato  $\text{♩} = 3/4$   $\text{♩} = 3$   $\text{♩} = 1$   $\text{♩} = 1$   $\text{♩} = 1$   $\text{♩} = 1$   $\text{♩} = 1$   $\text{♩} = 1$   $\text{♩} = 1$   $\text{♩} = 1$

$\text{♩} = 1$   $\text{♩} = 1$   $\text{♩} = 1$   $\text{♩} = 1$   $\text{♩} = 1$   $\text{♩} = 1$   $\text{♩} = 1$   $\text{♩} = 1$   $\text{♩} = 1$   $\text{♩} = 1$

$\text{♩} = 1$   $\text{♩} = 1$   $\text{♩} = 1$   $\text{♩} = 1$   $\text{♩} = 1$   $\text{♩} = 1$   $\text{♩} = 1$   $\text{♩} = 1$   $\text{♩} = 1$   $\text{♩} = 1$

$\text{♩} = 1$   $\text{♩} = 1$   $\text{♩} = 1$   $\text{♩} = 1$   $\text{♩} = 1$   $\text{♩} = 1$   $\text{♩} = 1$   $\text{♩} = 1$   $\text{♩} = 1$   $\text{♩} = 1$

$\text{♩} = 1$   $\text{♩} = 1$   $\text{♩} = 1$   $\text{♩} = 1$   $\text{♩} = 1$   $\text{♩} = 1$   $\text{♩} = 1$   $\text{♩} = 1$   $\text{♩} = 1$   $\text{♩} = 1$

$\text{♩} = 1$   $\text{♩} = 1$   $\text{♩} = 1$   $\text{♩} = 1$   $\text{♩} = 1$   $\text{♩} = 1$   $\text{♩} = 1$   $\text{♩} = 1$   $\text{♩} = 1$   $\text{♩} = 1$

*Allegro*  $\text{♩} = 3/4$   $\text{♩} = 1$   $\text{♩} = 1$   $\text{♩} = 1$   $\text{♩} = 1$   $\text{♩} = 1$   $\text{♩} = 1$   $\text{♩} = 1$   $\text{♩} = 1$   $\text{♩} = 1$

$\text{♩} = 1$   $\text{♩} = 1$   $\text{♩} = 1$   $\text{♩} = 1$   $\text{♩} = 1$   $\text{♩} = 1$   $\text{♩} = 1$   $\text{♩} = 1$   $\text{♩} = 1$   $\text{♩} = 1$

$\text{♩} = 1$   $\text{♩} = 1$   $\text{♩} = 1$   $\text{♩} = 1$   $\text{♩} = 1$   $\text{♩} = 1$   $\text{♩} = 1$   $\text{♩} = 1$   $\text{♩} = 1$   $\text{♩} = 1$

Empty musical staves

Handwritten musical notation on a five-line staff, featuring various note values and rests.

Handwritten musical notation on a five-line staff, including a sharp sign (#) and various note values.

Handwritten musical notation on a five-line staff, including a sharp sign (#) and various note values.

Handwritten musical notation on a five-line staff, including the text "D.C. al Fine y segue" written in a cursive hand.

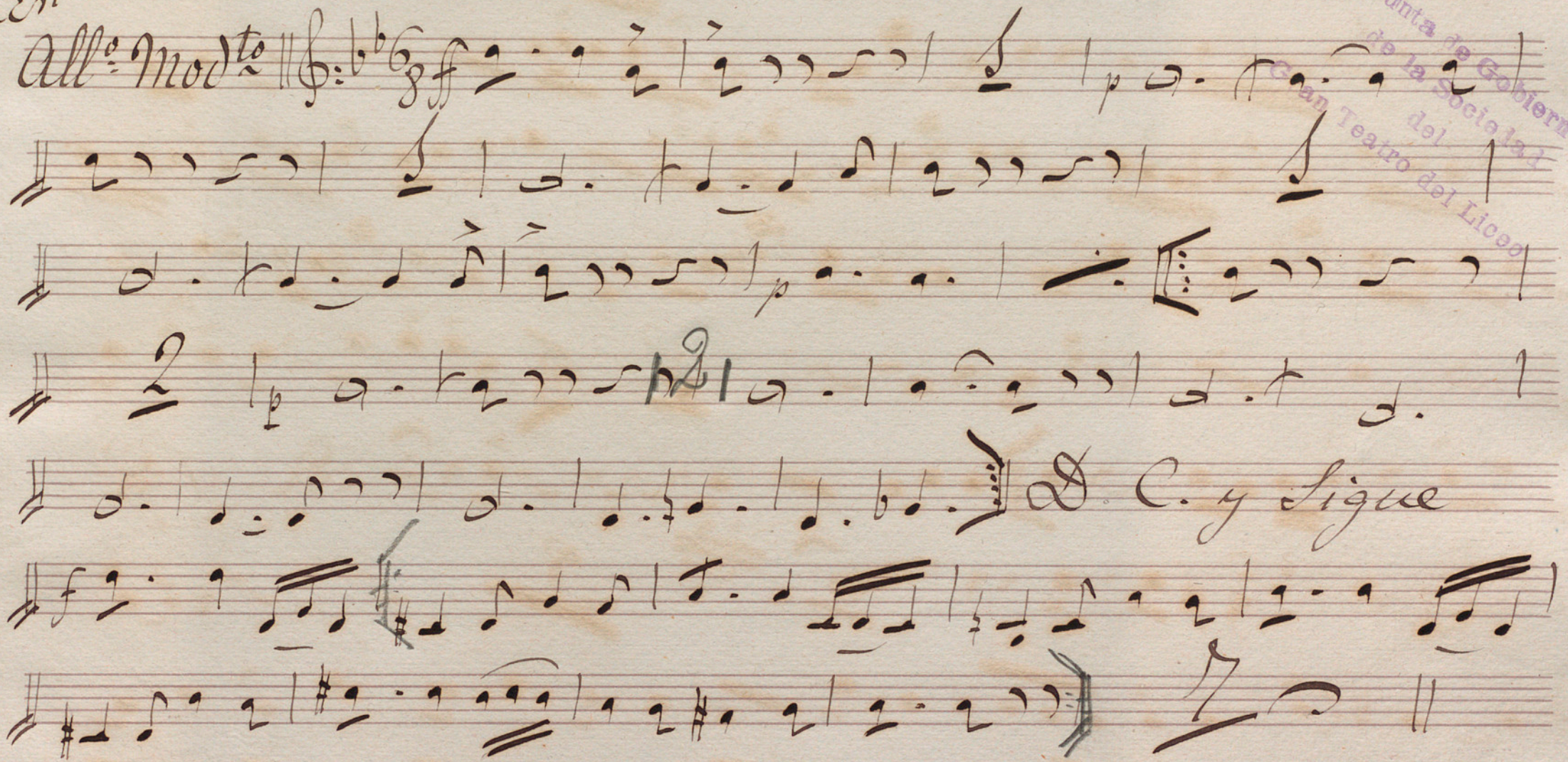
Handwritten musical notation on a five-line staff, including dynamic markings "p." (piano) and "cres." (crescendo), and a fermata symbol.

Handwritten musical notation on a five-line staff, including a sharp sign (#) and various note values.

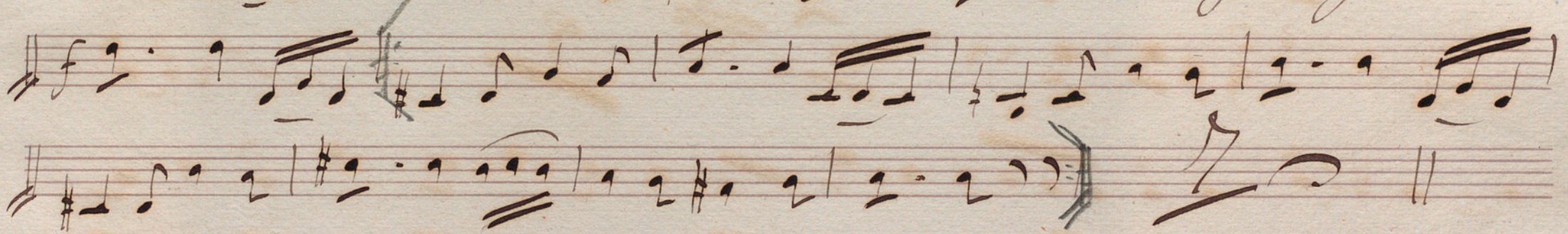
Four empty five-line musical staves at the bottom of the page.

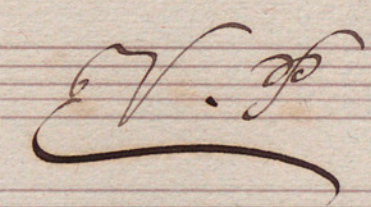


(En Sol<sup>4</sup>) Paso del Beso // Minuet de la Pedroma. Cornetín 1<sup>o</sup>

All<sup>o</sup> Mod<sup>to</sup> 

D. C. y Sigue





Junta de Gobierno  
de la Sociedad  
del Teatro del Liceo

Moderato *3/4* 3 1 2

Handwritten musical notation for the Moderato section, consisting of five staves of music. The notation includes various rhythmic values, accidentals, and dynamic markings such as *p*.

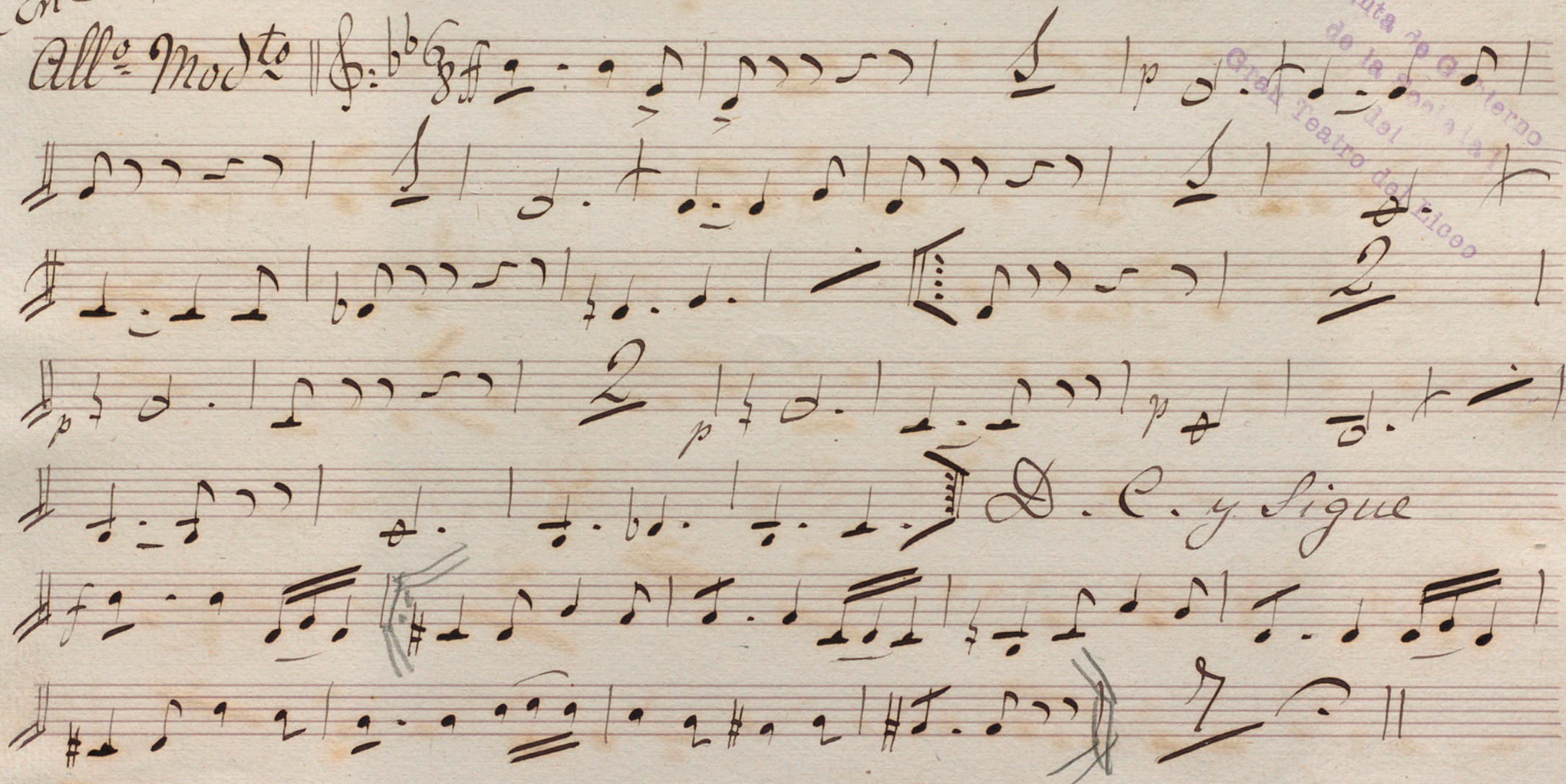
*De. al. y segue*  
Allegro *6/8* *f*

Handwritten musical notation for the Allegro section, consisting of three staves of music. The notation includes various rhythmic values, accidentals, and dynamic markings such as *f*.



Handwritten musical score on six staves. The first four staves contain a melodic line with various notes and rests. The fifth staff contains a dynamic marking *p.*, a *cres.* marking, and a series of rhythmic stems. The sixth staff contains a series of rhythmic stems and a sharp sign. The text *D. C. al Fine segue* is written in the fourth staff.

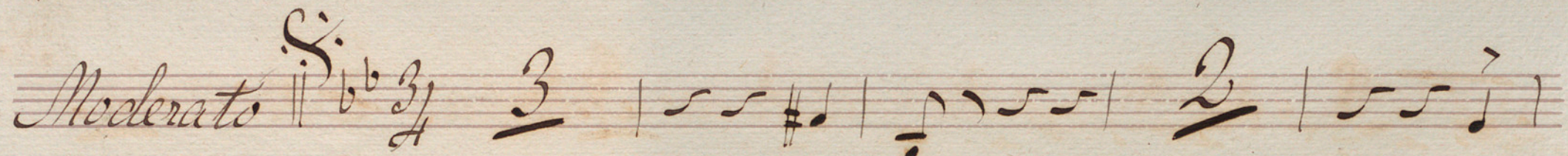
(En La) Paso del Beso // Minuet de la Pedoma. Cornetin 2<sup>o</sup>

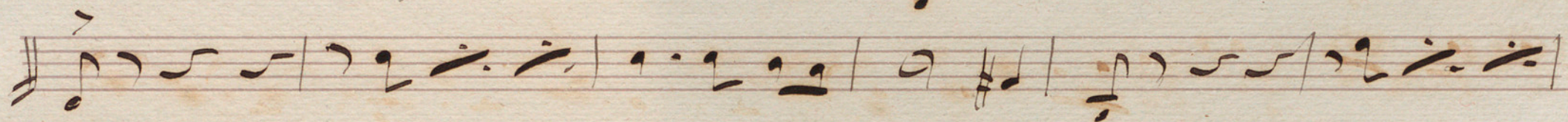
All<sup>o</sup> Mod<sup>to</sup> || 

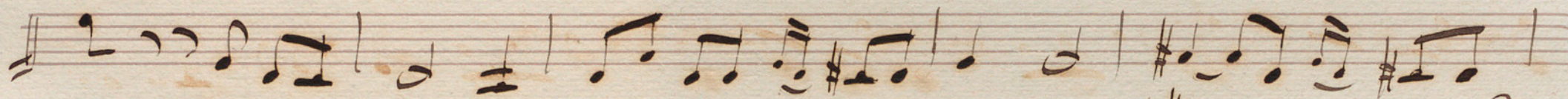
D. C. y Sique

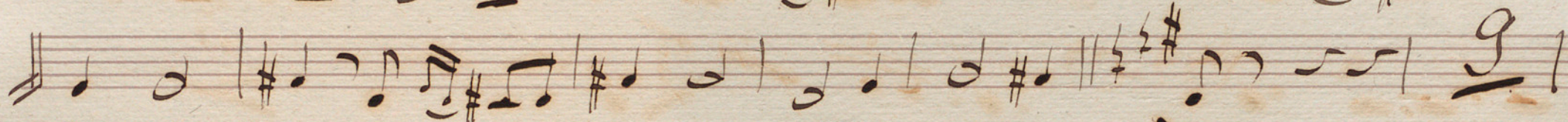
V. P.

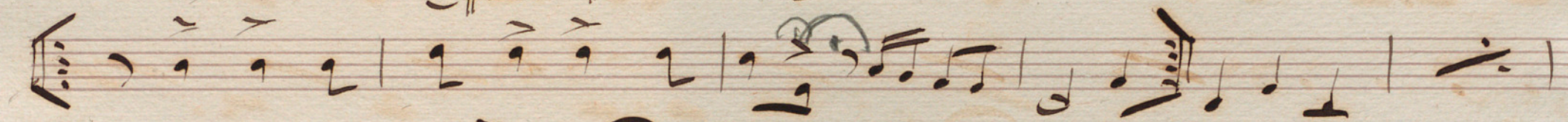
Junta de Gobierno  
de la Real Academia  
de Ciencias y Artes  
de San Carlos  
Teatro del Liceo

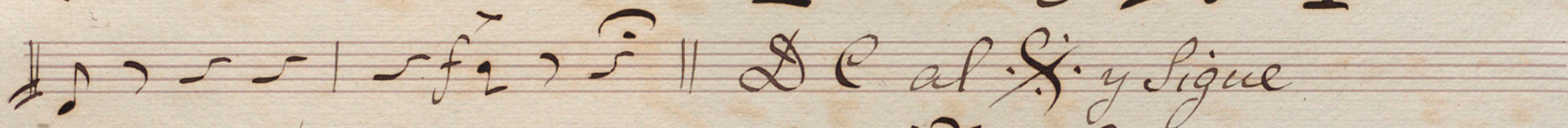
*Moderato* 



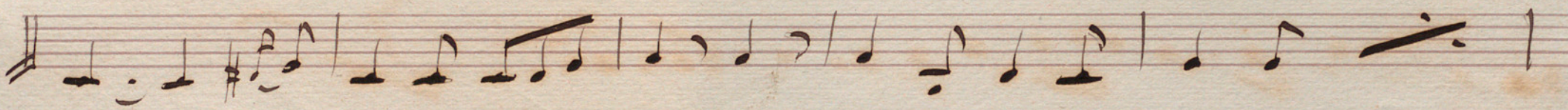




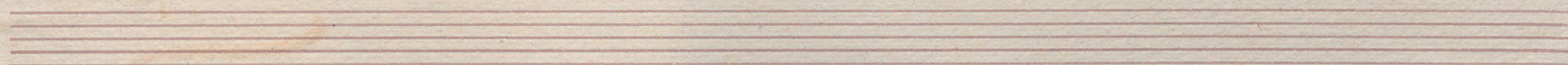




*Allegro* 







Handwritten musical notation on three staves. The first staff begins with a treble clef and a key signature of one sharp (F#). The music consists of eighth and sixteenth notes, with some slurs and accents. The second and third staves continue the melodic line with similar rhythmic patterns.

Handwritten musical notation on a single staff. It begins with a treble clef and a key signature of one sharp. The notation includes a double bar line followed by the text "D. C. al ~~F#~~ y Lique" written in cursive. The word "Lique" is written in a stylized, possibly misspelled or shorthand form.

Handwritten musical notation on two staves. The first staff starts with a treble clef and a key signature of one sharp. It contains several measures of music, including a measure with a slur and a note marked "cres" (crescendo). The second staff continues the notation with a treble clef and a key signature of one sharp, ending with a double bar line and a sharp sign.

Five empty musical staves, each consisting of five horizontal lines, arranged vertically at the bottom of the page.

Paso del Beso // Minuet de la Pedoma. Trombon 1<sup>o</sup>

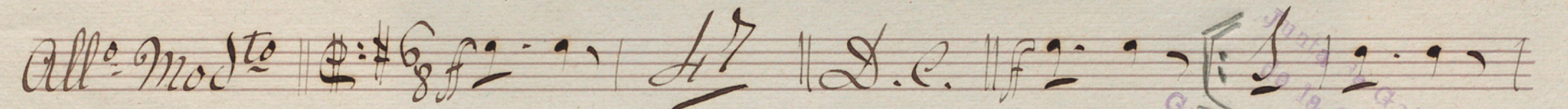
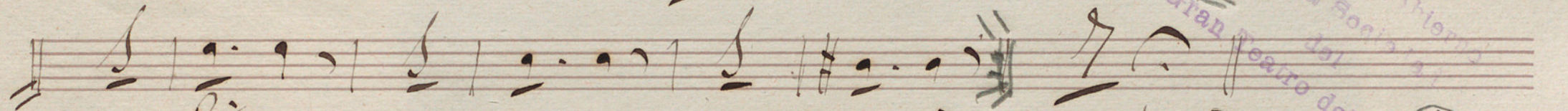
All<sup>o</sup> Mod<sup>to</sup> || G: #6/8 f 2' 1 | 47 || D.C. || f 2' 1 | 47

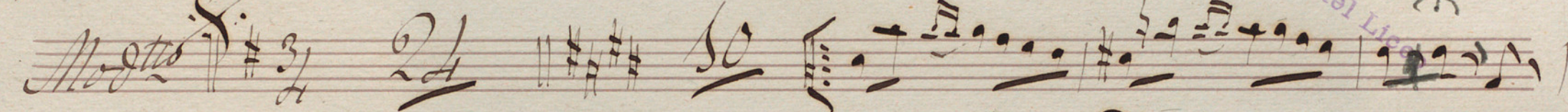
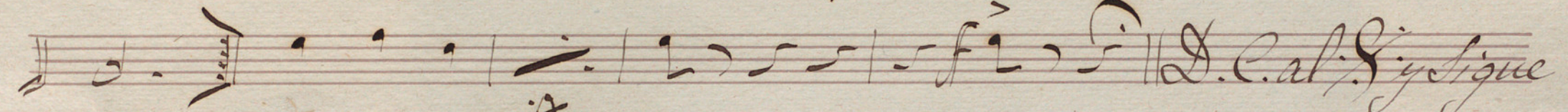
Mod<sup>to</sup> || 3/4 24 || 50 || D.C. al Sig<sup>ue</sup>

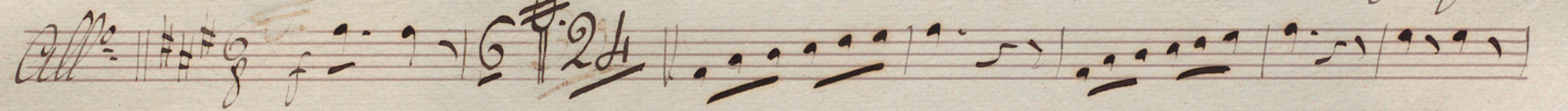
All<sup>o</sup> || #6/8 6 || 24 || D.C. al # y Sig<sup>ue</sup>

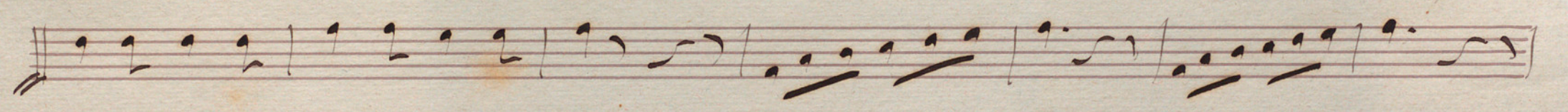
Junta de Gobierno de la Sonora al Gran Teatro del Liceo

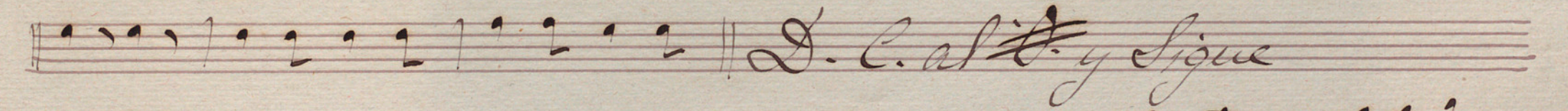
Paso del Beso // Minuet de la Pedoma. Trombon 2<sup>o</sup>

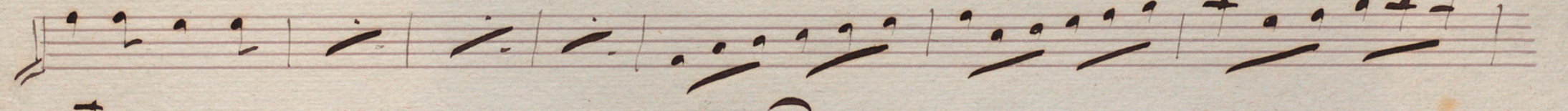
All<sup>o</sup> Mod<sup>to</sup> ||  $\text{E}:\#6/8$  *f*  || D.C. || *f* 

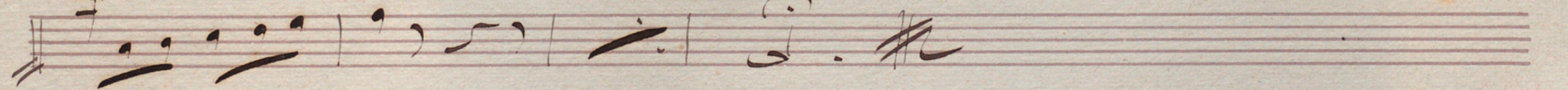
Mod<sup>to</sup>  $\text{E}:\#3/4$   ||  $\text{E}:\#3/4$  

All<sup>o</sup> ||  $\text{E}:\#6/8$   || D.C. al *f* y sigue



 || D.C. al *f* y sigue





Junta de Gobierno  
de la Real Academia  
del Teatro del Liceo



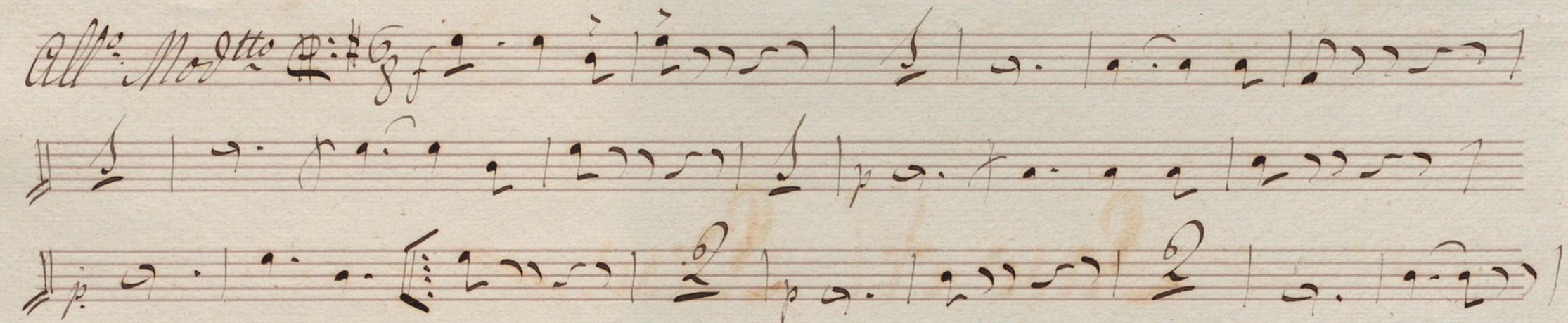
Triscorno Bajo.

/// Paso del Beso ///

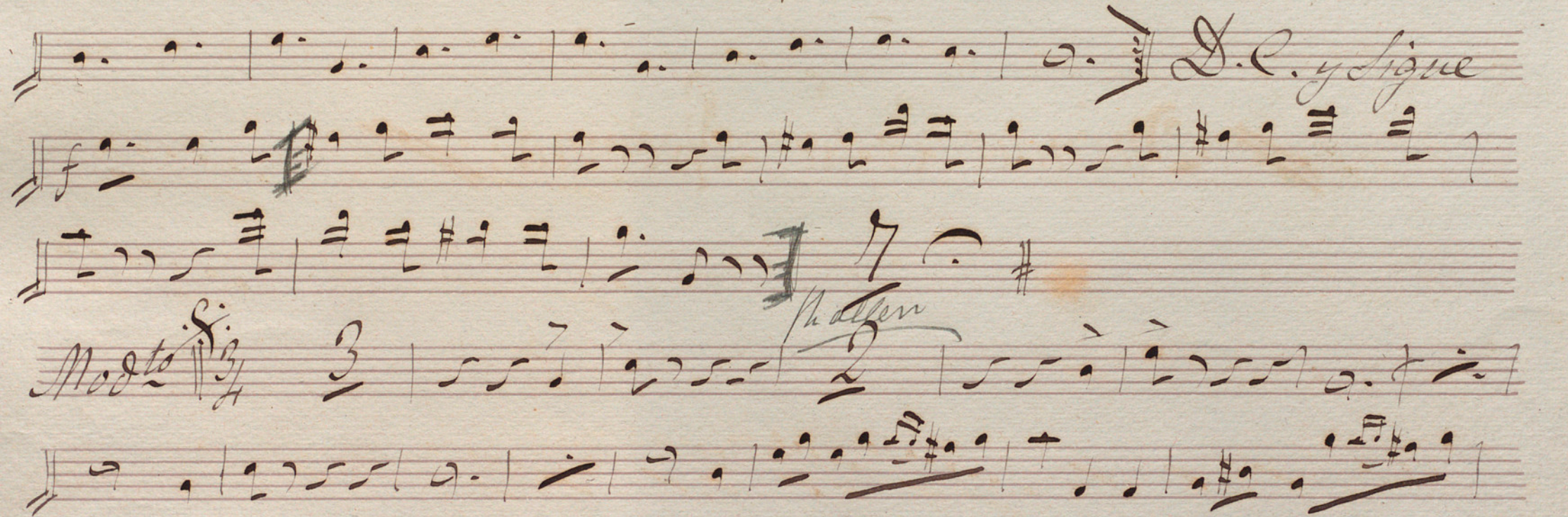
/// Minuet de la Pedoma. ///

Junta de Gobierno  
de la Real  
del  
Gran Teatro del Liceo

Paso del Beso Minuet.

*All. Modto*  $\text{E}:\#8/8$   $f$  

*D. C. y Segue*

*Modto*  $\text{E}:\#3/4$   $f$  *Ph. allegro* 



# Paso del Beso // Minuet de la Pedoma. Bombo.

All<sup>o</sup> Mod<sup>to</sup> ||  $\text{C}$   $\frac{6}{8}$   $f$   $\text{A}^7$  || D.C. ||  $f$   $\text{A}^7$  ||

$\text{A}^7$  |  $\text{A}^7$  |  $\text{A}^7$  |  $\text{A}^7$  |  $\text{A}^7$  |  $\text{A}^7$  ||

Mod<sup>to</sup>  $\frac{3}{4}$  36  $f$   $\text{A}^7$   $\text{A}^7$   $\text{A}^7$  || D.C. al  $\text{F}$   $\text{A}^7$  y sigue

All<sup>o</sup>  $\text{C}$   $\frac{6}{8}$   $f$  24  $\text{A}^7$   $\text{A}^7$   $\text{A}^7$   $\text{A}^7$   $\text{A}^7$   $\text{A}^7$   $\text{A}^7$   $\text{A}^7$  ||

$\text{A}^7$   $\text{A}^7$   $\text{A}^7$   $\text{A}^7$   $\text{A}^7$   $\text{A}^7$   $\text{A}^7$   $\text{A}^7$   $\text{A}^7$   $\text{A}^7$  ||

$\text{A}^7$   $\text{A}^7$   $\text{A}^7$  || D.C. al  $\text{F}$  y sigue ||  $\text{A}^7$   $\text{A}^7$   $\text{A}^7$  ||

$\text{A}^7$   $\text{A}^7$   $\text{A}^7$   $\text{A}^7$   $\text{A}^7$   $\text{A}^7$  ||

Junta de Gobierno  
de la Sociedad  
del  
Gran Teatro del Liceo

Paso del Beso = Minuet de la Pedroma.

Violin 1<sup>o</sup>

All<sup>o</sup> Mo<sup>do</sup>

ga... Poco

ga... Poco

ga... Poco

T. C. y Sigue

Tall

L. P.

Junta de Gobierno  
de la Soñe la V  
Gran Teatro del Liceo

*Molto*  $\frac{3}{4}$  *loco*

8a

*Al. S.*

*All.*

Handwritten musical score on aged paper, consisting of ten staves. The notation includes various note values, rests, and clefs. The sixth staff contains the handwritten text "D. Cal. y sigue". The paper shows signs of age, including foxing and staining.

Four empty musical staves at the bottom of the page, consisting of four sets of five horizontal lines each.

Paso del Beso // Minuet de la Pedroma. Violin 2<sup>o</sup>

All<sup>o</sup> Mod<sup>to</sup> || 

Junta de Gobierno  
de la Societat  
del Gran Teatro del Liceu

**De** y sigue

**F**

**tenuto**

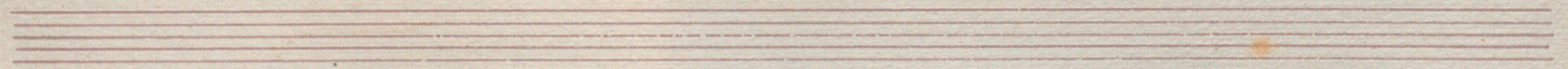
*L. P.*



*Molto*  $\frac{3}{4}$

*All.*  $\frac{6}{8}$


*D. Cal. S.*




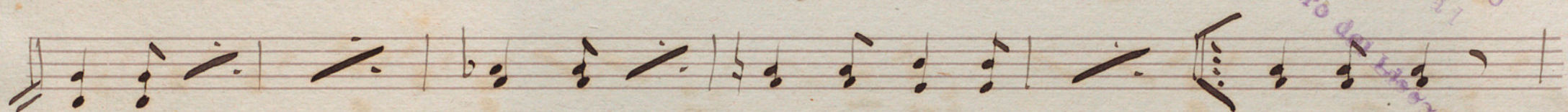
A handwritten musical score consisting of seven staves. The notation is in a cursive style, typical of 18th or 19th-century manuscripts. The first six staves contain musical notation with various notes, rests, and bar lines. The seventh staff begins with a double bar line, followed by the text "D. C. al ~~F.~~ y figure" written in cursive. Below this text, there are several notes and rests, with the word "cres." written in a smaller hand. The score concludes with a double bar line and a fermata-like flourish.

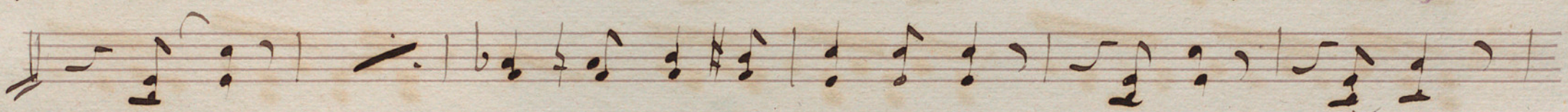
Four empty musical staves, each consisting of five horizontal lines, arranged vertically below the main score.

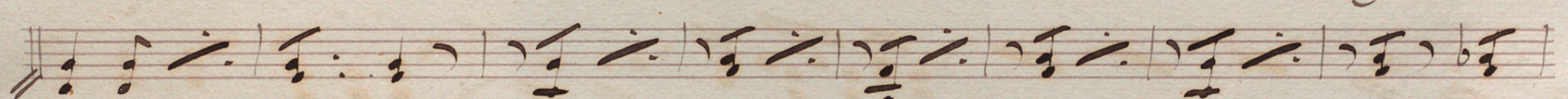
Paso del Beso // Minuet de la Pedoma. Violas.

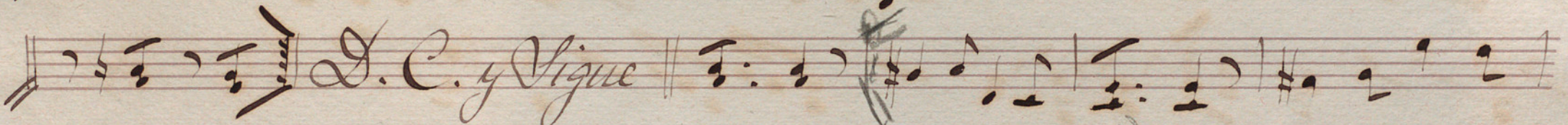
All<sup>o</sup> Mod<sup>to</sup> ||  $\text{K: } \#6/8$  *f* 

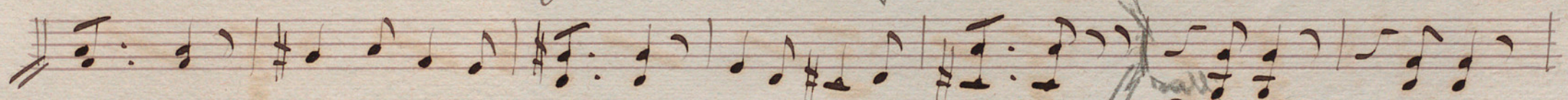


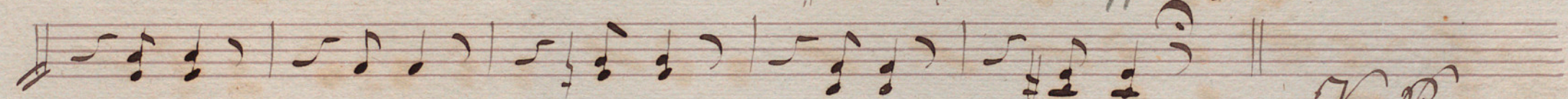












*V. P.*

Junta de Gobierno  
de la Soberania  
Gran Teatro del Liceo

Moc<sup>to</sup> *S.*  $\frac{3}{4}$

*Al. al. Sy. Sique*

*All.*  $\frac{6}{8}$

A handwritten musical score consisting of seven staves. The notation includes various note values, rests, and dynamic markings. The first six staves contain the main body of the piece. The seventh staff begins with a double bar line, followed by the instruction "D. C. al<sup>to</sup> y segue" written in cursive. The notation continues on this staff with a "cres." marking. The piece concludes with a double bar line and a key signature change to one sharp (F#).

Four empty musical staves, each consisting of five horizontal lines, located at the bottom of the page.

Paso del Beso // Minuet de la Pedoma. Violoncello.

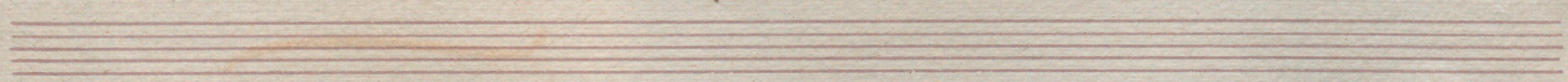
All<sup>o</sup> Mod<sup>to</sup> ||

V. P.

*Mod<sup>to</sup>*  $\text{3/4}$   $\text{S.}$

*D.C. al Fine y Sique*

*All<sup>o</sup>*  $\text{6/8}$   $\text{f}$



A handwritten musical score consisting of eight staves. The notation is in a cursive style, typical of 18th or 19th-century manuscripts. The first six staves contain a single melodic line with various note values, rests, and slurs. The seventh staff begins with the instruction "D.C. al<sup>o</sup> y segue" written in a cursive hand. The eighth staff continues the notation and includes a dynamic marking "cres" above the first few notes. The score concludes with a double bar line and a sharp sign. Below the eighth staff, there are four empty staves.



Bajo

Junta de Gobierno  
de la Santa la 1.  
del  
Gran Teatro del Liceo

/// Paso del Beso ///

/// Minuet de la Redoma ///

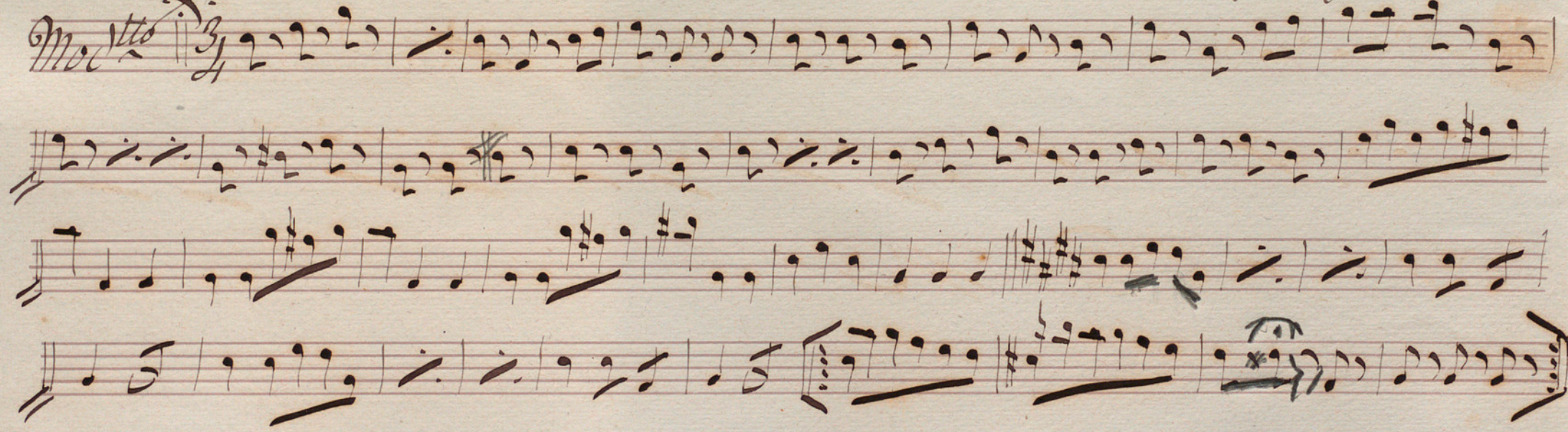
*Molto* ||  $\text{C} \#$   $\frac{6}{8}$  

*2da Repite*

*D.C.*

*rit*

*D. C. y Figue*

*Molto*  $\frac{3}{4}$  

*D. C. al. S. y. Sique*

*All.<sup>o</sup> ff.*

*mf.*

*f.*

*ff.*

*ff.*

*D. C. al. S. y. Sique*

*crec.*

*f.*

*f.*