

~~Bajo~~ Caja.

Causerie Intime

// Valse //

por

E. Kavan.

Handwritten musical score for the first system, consisting of six staves. The notation includes various rhythmic values, accidentals, and dynamic markings such as *ff* and *mol*. The first staff begins with a first ending bracket. The second staff has a *Resoluto* marking above it. The third staff has a *mol* marking above it. The fourth staff has a *cer* marking above it. The fifth staff has a first ending bracket. The sixth staff ends with a double bar line.

Cocla $2/4$

Handwritten musical score for the second system, consisting of four staves. The notation includes various rhythmic values, accidentals, and dynamic markings such as *Triangolo*, *Bambor*, and *Resoluto*. The word *Cocla* is written in the first staff. The first staff has a *Triangolo* marking above it. The second staff has a *Bambor* marking above it. The third staff has a *Resoluto* marking above it. The fourth staff ends with a *Fin* marking.

Trasparenza

En Gal

Valse

Causerie intime

Clarinete 2^o

Introd^{no} And^{no}

Handwritten musical notation for the first system, including notes, rests, and dynamic markings such as *p* and *mf*. A large blue scribble is present over this section.

Mouvt. de Valse.

Handwritten musical notation for the second system, including notes, rests, and dynamic markings such as *Ap*, *cres.*, and *rall^o*.

Valse

Handwritten musical notation for the third system, including notes, rests, and dynamic markings such as *Ap*, *cres.*, and *um*.

F. J.

A handwritten musical score on aged, yellowed paper, consisting of ten staves of music. The notation is in a historical style, likely from the 18th or 19th century. The score includes various musical symbols such as clefs, notes, rests, and dynamic markings. The dynamic markings include *crec.*, *mf*, *f*, *dim.*, *gracioso*, and *p*. The music is written in a single system across the ten staves. The first staff begins with a treble clef and a key signature of one sharp (F#). The notation is dense, with many notes and rests. The paper shows signs of age, including some staining and wear at the edges.

crec. *mf* *f*

mf *crec.* *f*

mf *crec.* *dim.*

gracioso *p* *crec.* *mf*

Handwritten musical score on ten staves. The notation includes various note values, rests, and dynamic markings such as *mf* and *crec*. The score concludes with a double bar line and a fermata-like flourish.

Handwritten signature or initials

A handwritten musical score on ten staves. The notation includes various note values, rests, and dynamic markings. The first staff begins with a forte (*f*) dynamic. The second staff includes *mf* and *cris* markings. The third staff has a *cris* marking. The fourth staff has an *mf* marking. The fifth staff has a *cris* marking. The sixth staff is marked *Segue.*. The seventh staff is marked *Coda* and *mf*. The eighth staff has a *cris* marking. The ninth staff has an *mf* marking. The tenth staff is empty. The manuscript shows signs of age, including some staining and ink bleed-through.

Handwritten musical score on seven staves. The notation includes various note values, rests, and dynamic markings such as "cres", "mf", and "Risoluto". The piece concludes with a double bar line and a fermata on the final note of the seventh staff.

Fin

Basson

Sausserie Intime

Fagotes

Intro and no

Morut de Salce

Salse

ff

Handwritten musical score, first system. The score consists of two staves. The upper staff begins with a treble clef, a key signature of one sharp (F#), and a time signature of 8/8. The lower staff begins with a bass clef and a key signature of one sharp (F#). The music is written in a cursive, handwritten style. The first staff contains several measures of music, including a measure with a dynamic marking of *mf*. The second staff contains several measures of music, including a measure with a dynamic marking of *f*. The system concludes with a double bar line.

Handwritten musical score, second system. The system begins with the word "Coda" written in a large, decorative script. The score consists of two staves. The upper staff begins with a treble clef, a key signature of one sharp (F#), and a time signature of 8/8. The lower staff begins with a bass clef and a key signature of one sharp (F#). The music is written in a cursive, handwritten style. The system concludes with a double bar line.

Corran

*Valse Causerie intime // Corno 2^o
(En Fa)
And^{no}*

Introc^{to} ||

Mouvt. de Valse *dim* *Rall^o*

Valse ||

cres *mf*

cres *Risoluto*

mf

cres...

mf

cres dim

p

cres-

mf

cres mf

Corio *ff* *p*

cres.

Cres
Trisoluto
p *cres*

mf *cres.*

mf

mf *cres.*

2^a

cres

mf

cres

Coda *p* *Rall^o.*

p

cres.

mf

mf *cres.*

mf

Assoluto

Assoluto

Assoluto

Cavan

Valse - Causerie intime

Cornetin 2^o

Solo

Solo

Introdⁿ And^{no} || f p *crec.* *dim.*

Mouv^t de Valse || p *rall^{to}*

Valse || p *Solo*

crec. *mf*

mf *crec.*

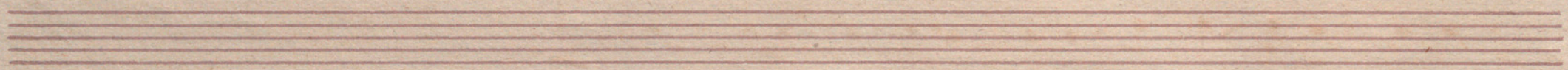
Risoluto

mf *1^a* *2^a*

p

Junta de Gobierno de la Sociedad de los Licenciados del Gran Teatro de la

Handwritten musical score on ten staves. The notation includes various notes, rests, and dynamic markings such as *cres*, *f*, *mp*, *p*, and *Solo*. The score is written in a cursive style with slurs and accents. The first staff begins with *cres*. The second staff has *p* and *cres...*. The third staff features *f*, *Solo*, and *p*. The fourth staff has *cres...* and *mp*. The fifth staff has *cres* and *mp*. The sixth staff starts with *Criso*, followed by *f*, *p*, and *mp*. The seventh staff has *cres*. The eighth staff has *p*. The ninth staff has *cres* and *mp*. The tenth staff has *cres* and *mp*. The score concludes with a double bar line and a *1a* marking.



Handwritten musical score on ten staves. The notation includes various note values, rests, and dynamic markings. Key annotations include:

- Staff 1: *2^a* (first ending bracket), *mf*
- Staff 2: *mf*, *1^a* (first ending bracket), *2^a* (second ending bracket)
- Staff 3: *mf*, *res*
- Staff 4: *res*, *rall^o*, *Coda*, *p*
- Staff 5: *Solo*, *res*
- Staff 6: *res*
- Staff 7: *res*, *risoluto*
- Staff 8: *mf*, *1^a* (first ending bracket), *2^a* (second ending bracket), *risoluto*
- Staff 9: *risoluto*
- Staff 10: *risoluto*

Bavan

Valse / Causerie intime

Trigle.

Introc^o / And^o || $\text{G}:\# \text{6/8}$ *mp* *p* *tralle*

M^o de Valse

Valse $\text{G}:\# \text{3/4}$ *mp* *eres* *mp* *eres* *mp*

Risoluto

V. P.

Junta de Administracion de la Sociedad de Cultura del Gran Teatro del Liceo

Triolo

Handwritten musical score for the first section, consisting of ten staves. The notation includes various rhythmic values, accidentals, and dynamic markings. The first staff begins with a treble clef and a key signature of one sharp (F#). The music is characterized by flowing lines and frequent use of slurs. Dynamics include *p*, *f*, *mf*, *mf cres*, *mf*, *cres*, *mi*, *mf*, *cres*, and *mf*. There are also markings for *1a* and *2a* on the fourth staff. The section concludes with a double bar line.

Supper

Handwritten musical score for the Coda section, starting with a treble clef, a 3/4 time signature, and a key signature of one sharp. The notation includes a *rall^{to}* marking. The section consists of several measures of music, ending with a double bar line.

Handwritten musical score for the final section, consisting of a single staff of music. The notation includes a treble clef and a key signature of one sharp. The music concludes with a double bar line and a decorative flourish.

Handwritten musical score on six staves. The notation includes various note values, rests, and dynamic markings. The first staff begins with a *mf* marking. The second staff features a *Risoluto* marking and a *cres* (crescendo) marking. The third staff has a *f* marking. The fourth staff has a *Risoluto* marking. The fifth staff ends with a double bar line. The sixth staff concludes with a *Fin* marking.

Fin

Coaban

Wagner

Valse // Causerie intime // Basso

Andantino

Intro $\text{G}:\#\text{F}$ $\frac{3}{8}$ f

cres... *dim*

cres... *dim*

Mour de Valse $\frac{3}{8}$ pp

Valse $\text{G}:\#\text{F}$ $\frac{3}{4}$ p

cres *mf*

mf

Risoluto

mf p

Handwritten musical notation on a single staff, featuring a series of eighth notes and quarter notes. The dynamic marking *mf* is present towards the end of the staff.

Handwritten musical notation on a single staff, featuring a series of eighth notes and quarter notes. The dynamic marking *p* is at the beginning, and *cres. . . .* is written below the staff.

Handwritten musical notation on a single staff, featuring a series of eighth notes and quarter notes. The dynamic markings *dim*, *f*, and *p* are present.

Handwritten musical notation on a single staff, featuring a series of eighth notes and quarter notes.

Handwritten musical notation on a single staff, featuring a series of eighth notes and quarter notes. The dynamic marking *mf* is at the beginning, and *cres* is written below the staff.

Handwritten musical notation on a single staff, featuring a series of eighth notes and quarter notes. The dynamic marking *mf* is present below the staff.

Handwritten musical notation on a single staff, starting with the word *Torio* and a treble clef. The dynamic marking *mf* is present below the staff.

Handwritten musical notation on a single staff, featuring a series of eighth notes and quarter notes. The dynamic marking *p* is at the beginning, and *cres* is written below the staff.

Handwritten musical notation on a single staff, featuring a series of eighth notes and quarter notes. The dynamic marking *mf* is present below the staff.

Handwritten musical notation on a single staff, featuring a series of eighth notes and quarter notes. The dynamic marking *cres* is written below the staff.

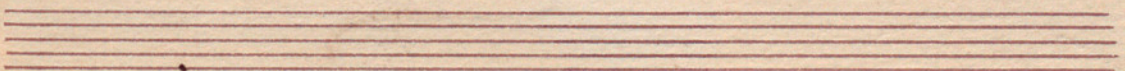
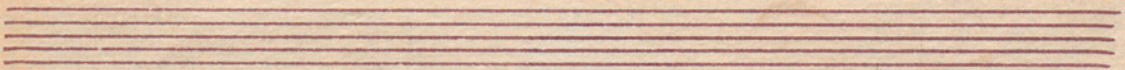
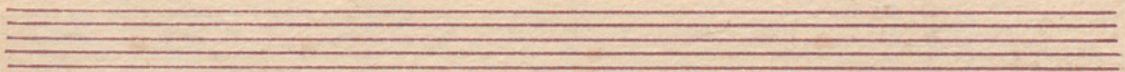
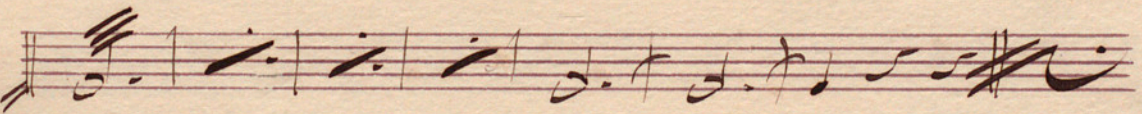
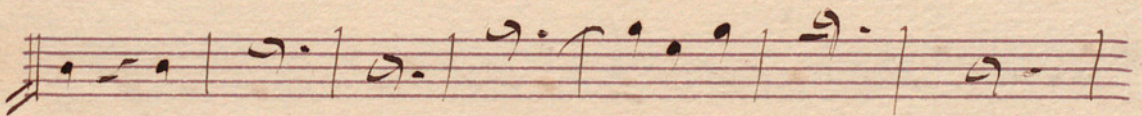
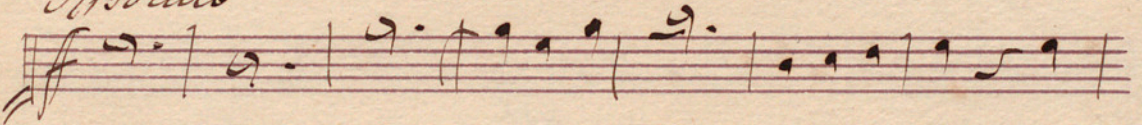
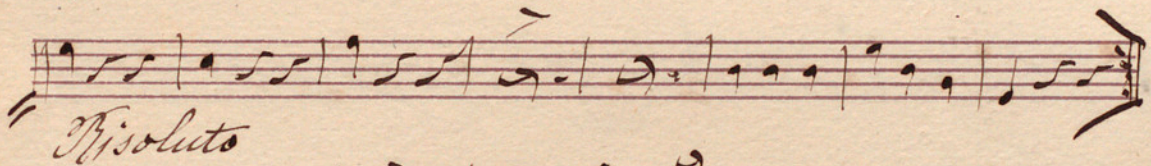
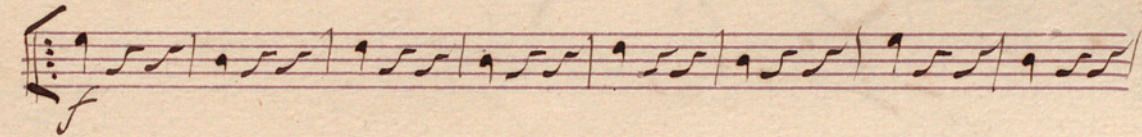
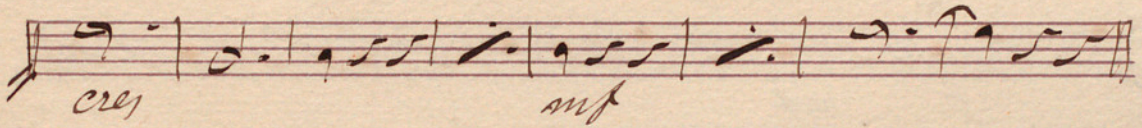
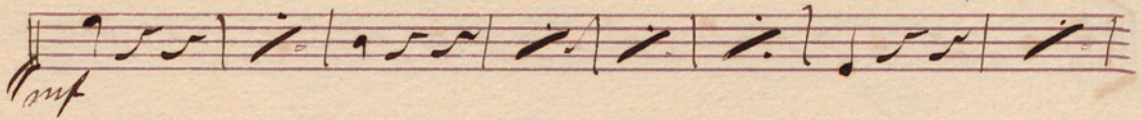
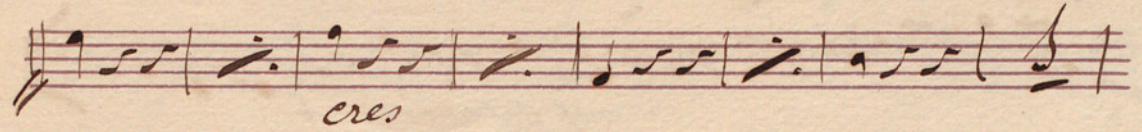
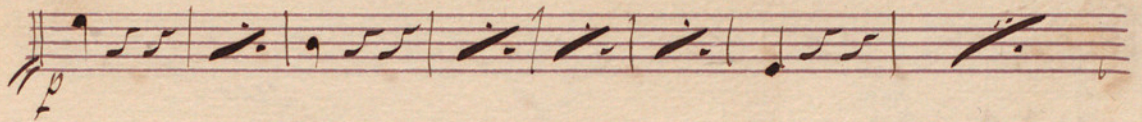
Handwritten musical notation on a single staff, featuring a series of eighth notes and quarter notes. A small *x* mark is above the first few notes.

Four empty musical staves at the bottom of the page.

Resoluto

f *cres.*
mf *cres. f*
mp
f *mf*
p *2a*
cres.
mf
Coda $\frac{3}{4}$

3
V. J.



Waban

Valse // Conversation intime // Basso.

Andantino



Intro 2/4 #F 6/8

cres. *dim.*

cres.

Mouvement de Valse *dim.*

Valse 3/4 #F p

cres. *mf*

mf

Waban

Handwritten musical notation on a five-line staff, featuring a series of eighth notes and a dynamic marking of *f*.

Handwritten musical notation on a five-line staff, continuing the melodic line with eighth notes.

Handwritten musical notation on a five-line staff, including dynamic markings *dim.*, *f*, and *p*.

Handwritten musical notation on a five-line staff, featuring a purple handwritten annotation "Bis" above a measure.

Handwritten musical notation on a five-line staff, starting with a dynamic marking of *mf* and ending with *cres...*

Handwritten musical notation on a five-line staff, featuring a dynamic marking of *mf*.

Handwritten musical notation on a five-line staff, beginning with the word "Trio" and a 3/4 time signature, with a dynamic marking of *mf*.

Handwritten musical notation on a five-line staff, starting with a dynamic marking of *p* and ending with *cres...*

Handwritten musical notation on a five-line staff, featuring a dynamic marking of *mf*.

Handwritten musical notation on a five-line staff, continuing the melodic line.

Handwritten musical notation on a five-line staff, featuring a dynamic marking of *mf*.

Four empty musical staves at the bottom of the page.

Risoluto

Handwritten musical score for the main piece, consisting of 11 staves of music. The notation includes treble clefs, a key signature of one sharp (F#), and a 3/4 time signature. The music features a variety of rhythmic patterns, including eighth and sixteenth notes, and rests. Dynamics such as *p* (piano), *mf* (mezzo-forte), and *f* (forte) are indicated throughout. Crescendo markings (*cres.*) are used to denote increasing volume. There are also accents (^) and slurs over certain notes. The piece concludes with a double bar line.

Coda *p*

Handwritten musical notation for the Coda section, starting with a treble clef, a key signature of one sharp, and a 3/4 time signature. The notation includes a dynamic marking of *p* (piano) and a double bar line.

Handwritten musical notation for the Coda section, showing a treble clef, a key signature of one sharp, and a 3/4 time signature. The notation includes a dynamic marking of *p* (piano) and a double bar line.

V. P.

Handwritten signature "V. P." with a decorative flourish underneath.

Handwritten musical score on aged paper. The score consists of several staves of music. The first staff begins with a piano (*p*) dynamic. The second staff includes a *Cres* (Crescendo) marking. The third staff is marked *mf* (mezzo-forte). The fourth staff features a *cres* marking followed by a *mf* marking. The fifth staff is marked *ff* (fortissimo). The sixth staff is marked *Isoluto*. The seventh staff continues the musical notation. The eighth staff is a single line of music. The ninth and tenth staves are empty. The page is numbered 12 in the upper right corner.

12

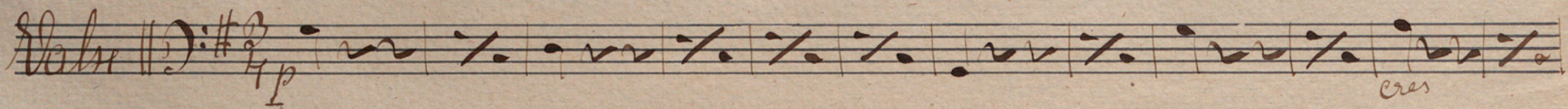
Bajo.

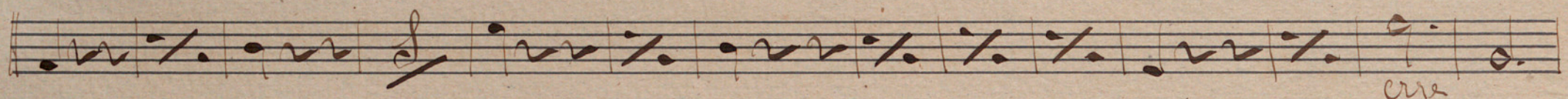
Valse. Causerie Intime.

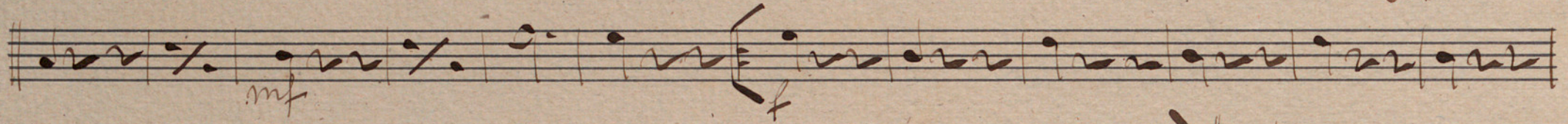
E. Kavan.

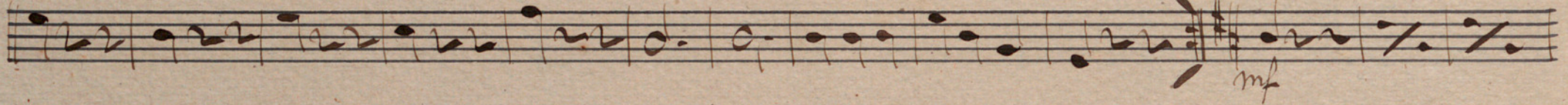
Intro *on* $\text{B}:\sharp\text{C}$ $\frac{6}{8}$ *f* *cres* *dim* *cres* *Maximen de Valse* $\text{B}:\sharp\text{C}$ $\frac{3}{4}$

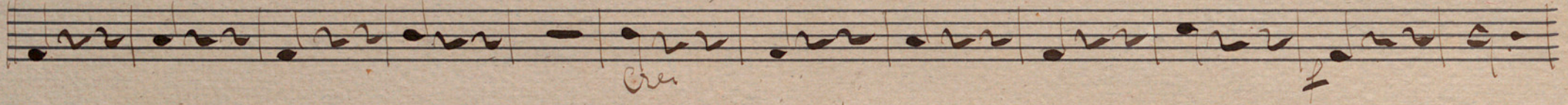
Ataca Valse.

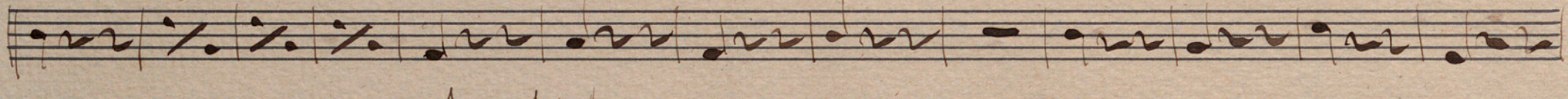
Vahn $\text{D}^{\sharp} \frac{3}{4} p$  *cres*

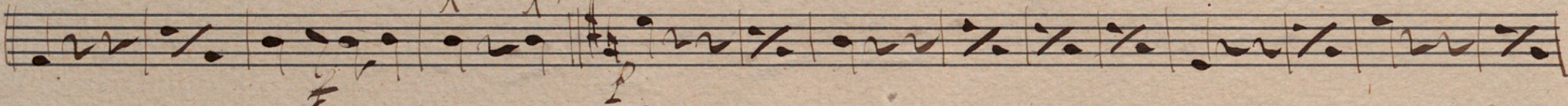
 *cres*

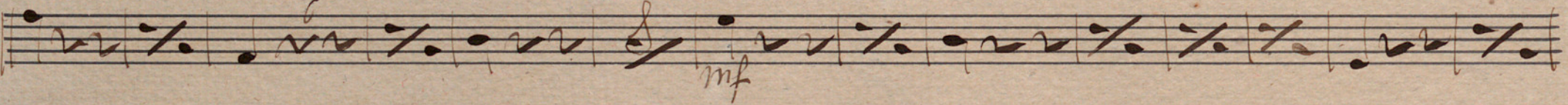
 *mf* *f*

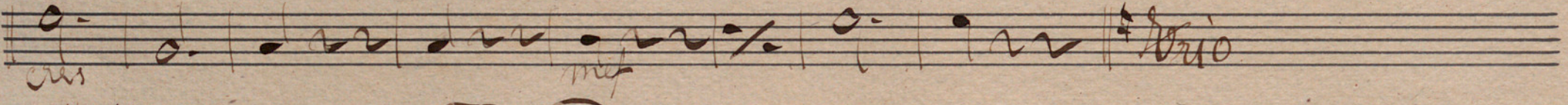
 *mf*

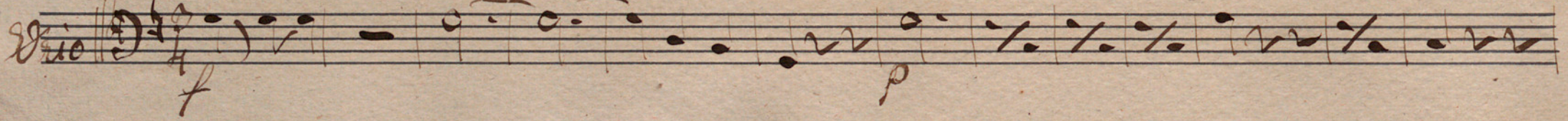
 *cres* *f*



 *f* *p*

 *mf*

 *cres* *mf* *Vrio*

Vrio $\text{D}^{\sharp} \frac{3}{4} f$  *f* *p*

Risoluto

Handwritten musical score for the first system, consisting of five staves. The notation includes various rhythmic values, accidentals, and dynamic markings such as *ff*, *cres*, *mf*, *f*, and *se*. The music features a complex rhythmic pattern with many sixteenth notes and some rests.

suiver

Coda

Coda

Handwritten musical score for the second system, consisting of five staves. The notation includes various rhythmic values, accidentals, and dynamic markings such as *p*, *cres*, *mf*, *ff*, and *Fine*. The music continues with a similar rhythmic complexity and concludes with a *Fine* marking.

Risoluto

Fine