



Volin - Director

El Marmullo

Schottisch



Introducción

Handwritten musical score for guitar, titled "Introducción". The score is written on six systems of staves, each with a treble and bass clef. The key signature is one sharp (F#) and the time signature is common time (C). The notation includes various rhythmic values, accidentals, and dynamic markings such as "p" and "f". The piece concludes with a double bar line and repeat dots.



Handwritten musical notation for the first system, featuring a treble and bass staff with various notes and rests.

Handwritten musical notation for the second system, including a grand staff with piano accompaniment and a vocal line.

Handwritten musical notation for the third system, with a "Coda" marking and a double bar line.

Handwritten musical notation for the fourth system, continuing the piano accompaniment and vocal line.

Handwritten musical notation for the fifth system, ending with a "Coda" marking and a double bar line.

*Al. f*

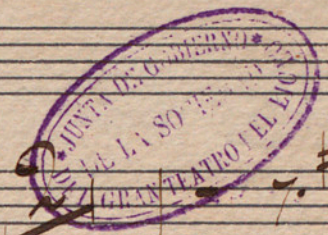
*Piano*



Schotisch.

El Marmullo.

Flautin



Introduction

loco

Coda

Coda

D.C. al



Schotisch.

El Murrullo.

Flauta



Handwritten musical score for Flute, titled 'Schotisch. El Murrullo.' The score is written on ten staves. It begins with an 'Intro:' and ends with a 'Coda'. The music is in 2/4 time and features a key signature of one sharp (F#). The notation includes various rhythmic patterns, such as eighth and sixteenth notes, and rests. There are several dynamic markings, including 'f' (forte) and 'loco'. The piece concludes with a 'D.C. al Fine' instruction. A purple stamp is visible in the upper right corner, and the word 'Coda' is written at the end of the final staff.



Schotisch.

El Murrullo.

Oboe



Handwritten musical score for Oboe, titled "Schotisch. El Murrullo." The score consists of ten staves of music. The first staff is labeled "Introd:" and begins with a treble clef, a key signature of one sharp (F#), and a 4/4 time signature. The music is written in a cursive hand. A double bar line with a repeat sign appears after the first few measures. The score includes various musical notations such as notes, rests, and dynamic markings. A section labeled "Coda" is marked with a double bar line and a repeat sign. The final staff is also labeled "Coda" and ends with a double bar line and a repeat sign. The text "D. C. al Fine" is written on the eighth staff. The paper shows signs of age and wear.



Schotisch.

El Murmullo.

Clarinete 1<sup>o</sup>

*In Sol* Intro:



A. V.



Schotischs

Al Mirmullo.



Clarinete 2º

*2m Si* Intro:

*Coda*

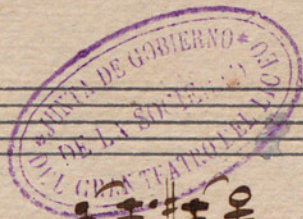
*D.C. al Fine*

*Coda*



Schotisch.

El Marmallo.



Fagot

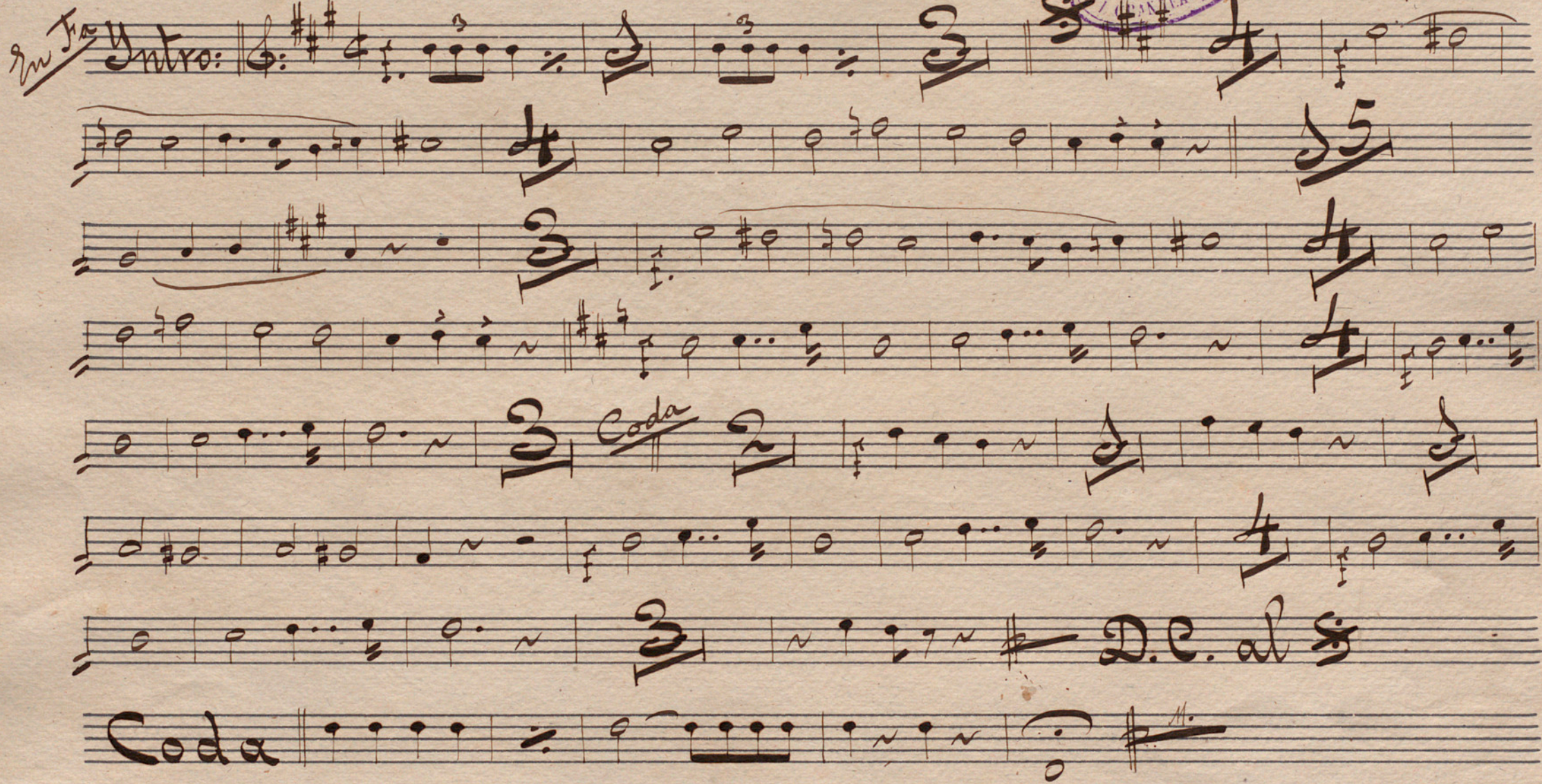
Intro:

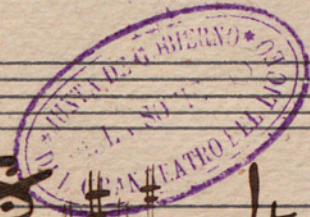


Schotisch:

El Marmallo.

Trompa 5a

*In Fa* Intro: The musical score is written on eight staves. The first staff begins with a treble clef, a key signature of three sharps (F#, C#, G#), and a 3/4 time signature. It is marked 'Intro:' and contains several measures of music with repeat signs. The second staff continues the melody with a 4/4 time signature. The third staff features a 3/4 time signature and includes a first ending bracket. The fourth staff continues with a 4/4 time signature. The fifth staff is marked 'Coda' and contains a 2/4 time signature. The sixth staff continues with a 4/4 time signature. The seventh staff concludes with a 3/4 time signature and the instruction 'D.C. al Fine'. The eighth staff is labeled 'Coda' and contains a few final notes. A purple circular stamp is visible in the upper right quadrant of the page.





Schotisch.

El Marmullo.



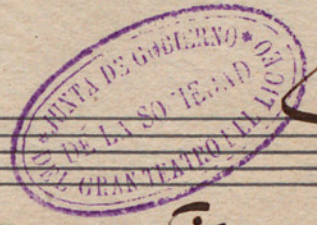
Trompa 2:

*In Fa* Intro:



Schotisch

El Marmullo.



Cornetin 1º

(En Lea) Intro: ||

D.C. al

Coda ||



Schotisch.

El Murrullo.



Cornetina 2<sup>o</sup>

Handwritten musical score for Cornetina 2<sup>o</sup>. The score begins with an *Intro:* in 2/4 time, marked *Andante*. The first staff contains the introductory melody. The second staff continues the melody with a *5<sup>a</sup> vez* (5th time) and *2<sup>a</sup>* (2nd time) marking. The third staff features a *5* measure rest and a *4* measure rest. The fourth staff includes a *Coda* section. The fifth staff continues the melody. The sixth staff concludes with a *D.C.* (Da Capo) instruction and a *al 8* marking. The seventh staff is labeled *Coda* and contains a final melodic phrase. The score is written on seven staves, with the last two staves being empty.



Schotisch.

El Marmullo.

Trombon 2:



Intro: **3/4** **16**

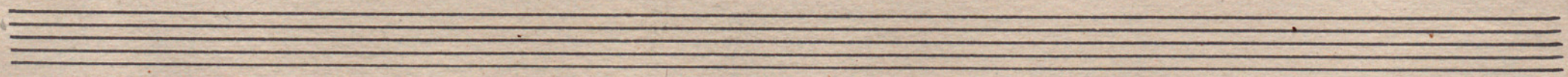
**5/4** **4**

**3/4** **Coda**

**4/4**

**3/4** **D.C. al Fine**

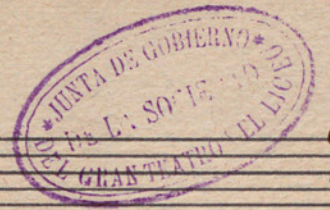
**Coda**





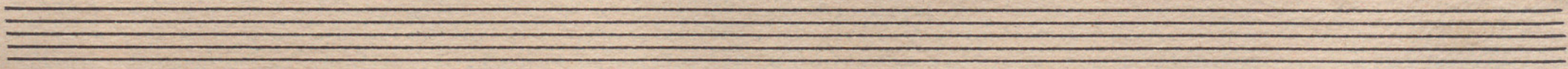
Schotisch.

El Murmullo.



Trombon 2<sup>o</sup>

Intro:









Schotisch.

El Marmullo.



Timpani

Intro: *Mi-La*

*Re-La*

*Re-Sol*

*Coda*

1 2 3 4 5

D.C. al *Fin*

*Coda*



Schotisch

El Marmullo



Caja

Introducción

Coda

Coda



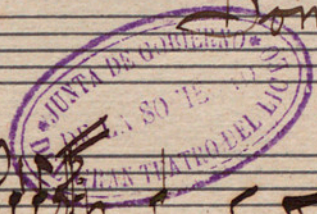
Schotisch

El Marmullo.

Bombo y Platos

Introducción

Bombo.



Handwritten musical notation for a drum set, including various rhythmic patterns, rests, and dynamic markings such as 'Coda' and 'D.C. al fine'.

Fin



Schotisch.

El Murmullo del arrollo

Violin I:

Intro:

loco

3-vez

Coda

loco

D.C. al Fine

Coda



Schotisch.

Il Marmallo.

Violin 2:

Intro:  $\text{G major}$   $\text{3/4}$

Coda

D.C. al  $\text{Fin}$

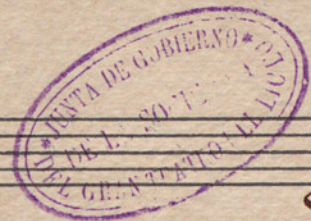
Coda

$\text{||}\text{||}$



Schotisch.

El Marmullo.



Viola

Handwritten musical score for Viola, titled "Schotisch. El Marmullo." The score consists of ten staves of music. The first staff begins with an "Intro:" and a key signature of one sharp (F#). The music is written in a style characteristic of 19th-century manuscript notation, featuring various rhythmic values, accidentals, and dynamic markings. A "Coda" section is marked above the sixth staff. The piece concludes with a "Coda" section on the tenth staff, followed by the instruction "D.C. al Fine" and a final fermata. A purple circular stamp is visible in the upper right corner of the page.



Schotisch

El Murrullo.

Cello.

Intro:  $\text{Bass clef}$   $\text{Key signature: } \text{F}\# \text{ and } \text{C}\#$   $\text{Time signature: } 2/4$

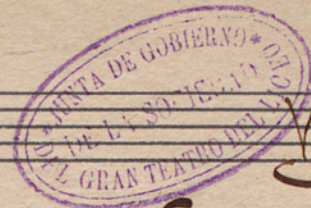
$\text{Cello part}$

*p* *f* *Coda* *D.C. al Coda*



Schotisch.

El Marmallo.



Violoncello

Intro: || Bass clef, key signature of two sharps (F# and C#), 4/4 time signature. The piece begins with a melodic line in the right hand and a supporting bass line in the left hand. The first system contains two staves. The second system contains two staves. The third system contains two staves, with a first ending bracket labeled '1.º' and a second ending bracket labeled '2.º'. The fourth system contains two staves. The fifth system contains two staves. The sixth system contains two staves, with a 'Coda' marking above the right-hand staff. The seventh system contains two staves. The eighth system contains two staves, ending with a double bar line and a repeat sign.

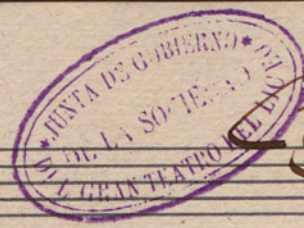
Coda. || Bass clef, key signature of two sharps, 4/4 time signature. The coda consists of a few measures of music, including a triplet of eighth notes. It ends with a double bar line and a repeat sign.

D.C.  
al fine



Schotisch.

# El Marmallo



Contrabajo

Intro: