

10.

LA CASCADE DE LONGCHAMP.

NOUVEAU BOIS DE BOULOGNE.
GRANDE VALSE.

PAR N. BOUSQUET.

1^{er} VIOLON.

Maestoso

Introduction

Plus lent

1

VALSE

p *espressivo*

2

3

p *legiero*

dolce.

51643-2

This page of musical notation contains several systems of staves. The top system includes first and second endings, marked with *f*. The second system features a treble clef and a *p* dynamic marking. The third system includes first and second endings. The fourth system is marked *ff* and contains a section labeled "CODA" with a treble clef and a 5/4 time signature. The fifth system includes a first ending marked *espressivo*. The sixth system includes a first ending marked *ff*. The seventh system includes a first ending marked *f*. The eighth system includes a first ending marked *p*. The ninth system includes a first ending marked *ff*. The tenth system includes a first ending marked *ff*. The eleventh system includes a first ending marked *ff*. The twelfth system includes a first ending marked *ff*. The thirteenth system includes a first ending marked *ff*. The fourteenth system includes a first ending marked *ff*. The fifteenth system includes a first ending marked *ff*. The sixteenth system includes a first ending marked *ff*. The seventeenth system includes a first ending marked *ff*. The eighteenth system includes a first ending marked *ff*. The nineteenth system includes a first ending marked *ff*. The twentieth system includes a first ending marked *ff*.



Violin Principal.

9.

no 9

La cascade de Lonchamp

Valse

par

N. Bousquet

Introduccion //

Maestoso

Handwritten musical notation for the first system, featuring a treble clef, a key signature of two flats (B-flat and E-flat), and a common time signature. The notation includes a series of eighth and sixteenth notes with stems pointing upwards, followed by a fermata over a half note.

Handwritten musical notation for the second system, continuing the melodic line with eighth and sixteenth notes and stems pointing upwards.

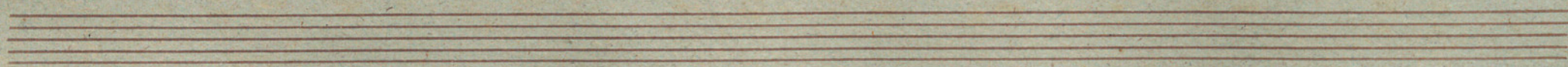
Menos.

Handwritten musical notation for the third system, starting with a treble clef and a key signature of two flats. The notation includes a series of eighth and sixteenth notes with stems pointing upwards.

Handwritten musical notation for the fourth system, featuring a treble clef and a key signature of two flats. The notation includes a series of eighth and sixteenth notes with stems pointing upwards.

Handwritten musical notation for the fifth system, featuring a treble clef and a key signature of two flats. The notation includes a series of eighth and sixteenth notes with stems pointing upwards.

Handwritten musical notation for the sixth system, featuring a treble clef and a key signature of two flats. The notation includes a series of eighth and sixteenth notes with stems pointing upwards.



Handwritten musical notation for the first system, featuring a treble clef staff with a key signature of one sharp (F#) and a bass clef staff with a key signature of one flat (Bb). The notation includes various rhythmic values and rests.

Valze *f* *3* *4* *Esprecion.*

Handwritten musical notation for the third system, featuring a treble clef staff with a key signature of one sharp (F#) and a bass clef staff with a key signature of one flat (Bb). The notation includes various rhythmic values and rests.

1a vez.

Handwritten musical notation for the fourth system, featuring a treble clef staff with a key signature of one sharp (F#) and a bass clef staff with a key signature of one flat (Bb). The notation includes various rhythmic values and rests.

2a vez.

Handwritten musical notation for the fifth system, featuring a treble clef staff with a key signature of one sharp (F#) and a bass clef staff with a key signature of one flat (Bb). The notation includes various rhythmic values and rests.

Handwritten musical notation on a single staff. It begins with a treble clef and a key signature of one sharp (F#). The notation includes a dotted quarter note, followed by a half note with a sharp sign, a quarter note with a sharp sign, and a half note with a sharp sign. There are several rests and other note values throughout the staff.

Handwritten musical notation on a single staff. It features a first ending bracket labeled "1a vez" and a second ending bracket labeled "2a vez". The notation includes a treble clef, a key signature of one sharp, and various note values and rests.

Handwritten musical notation on a grand staff (treble and bass clefs). The treble clef part has a key signature of one sharp and a 2/4 time signature. The bass clef part has a key signature of one sharp and a 2/4 time signature. The notation includes various note values, rests, and accidentals.

Handwritten musical notation on a single staff. It features a series of eighth notes and a final chord. The notation includes a treble clef, a key signature of one sharp, and various note values and rests.

Handwritten musical notation on a single staff. It features a series of eighth notes and a final chord. The notation includes a treble clef, a key signature of one sharp, and various note values and rests.

1^a vez 2^a vez

1^a vez

2^a vez

Handwritten musical notation on a five-line staff. It begins with a treble clef, a key signature of one sharp (F#), and a 3/4 time signature. The first measure contains a complex, multi-measure rest. The subsequent measures contain rhythmic patterns of eighth and sixteenth notes with stems pointing downwards.

Handwritten musical notation on a five-line staff. It starts with a treble clef, a key signature of one sharp (F#), and a 3/4 time signature. The notation includes eighth and sixteenth notes with stems pointing downwards. A "dolc." (dolce) marking is written above the staff in the third measure.

Handwritten musical notation on a five-line staff. It features a treble clef, a key signature of one sharp (F#), and a 3/4 time signature. The notation includes eighth and sixteenth notes with stems pointing downwards. Two measures are bracketed together and labeled "1a. ver." and "2a. ver." above them.

Handwritten musical notation on a five-line staff. It starts with a treble clef, a key signature of one sharp (F#), and a 3/4 time signature. The notation includes eighth and sixteenth notes with stems pointing downwards. A "3a." marking is written above the staff in the second measure.

Handwritten musical notation on a five-line staff. It features a treble clef, a key signature of one sharp (F#), and a 3/4 time signature. The notation includes eighth and sixteenth notes with stems pointing downwards.

1^a vez.

2^a vez.

29

offis

ga...

1^a ver

2^a ver

Coada

Handwritten musical notation on a single staff. It begins with a treble clef and a key signature of one sharp (F#). The notation includes several measures of music with notes and rests. A dynamic marking *mf* is present. A fermata is placed over a note in the fourth measure. The word *Espresso* is written above the staff in the fifth measure. The staff ends with a double bar line and repeat dots.

Handwritten musical notation on a single staff. It begins with a treble clef and a key signature of one sharp (F#). The notation includes several measures of music with notes and rests. A dynamic marking *mf* is present. A fermata is placed over a note in the fourth measure. The word *Espresso* is written above the staff in the fifth measure. The staff ends with a double bar line and repeat dots.

Handwritten musical notation on a single staff. It begins with a treble clef and a key signature of one sharp (F#). The notation includes several measures of music with notes and rests. A dynamic marking *mf* is present. A fermata is placed over a note in the fourth measure. The word *Espresso* is written above the staff in the fifth measure. The staff ends with a double bar line and repeat dots.

Handwritten musical notation on a single staff. It begins with a treble clef and a key signature of one sharp (F#). The notation includes several measures of music with notes and rests. A dynamic marking *mf* is present. A fermata is placed over a note in the fourth measure. The word *Espresso* is written above the staff in the fifth measure. The staff ends with a double bar line and repeat dots.

Handwritten musical notation on a single staff. It begins with a treble clef and a key signature of one sharp (F#). The notation includes several measures of music with notes and rests. A dynamic marking *mf* is present. A fermata is placed over a note in the fourth measure. The word *Espresso* is written above the staff in the fifth measure. The staff ends with a double bar line and repeat dots.

2^a vez