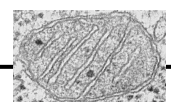




REFERÈNCIES

16 TREBALLS REFERENCIATS

- Aboseif S, Gasparini M, Schmidt R and Tanagho E **1993**. Wolfram's (DIDMOAD) syndrome and its urological manifestation. *Br J Urol* 72(1):106-11.
- Abouafia DM and Bundow D **1998**. Images in clinical medicine. Buffalo hump in a patient with the acquired immunodeficiency syndrome. *N Engl J Med* 339(18):1297.
- Al-Sheyyab M, Jarrah N, Younis E, Shennak MM et al. **2001**. Bleeding tendency in Wolfram syndrome: a newly identified feature with phenotype genotype correlation. *Eur J Pediatr* 160(4):243-6.
- Ames BN, Shigenaga MK and Hagen TM **1993**. Oxidants, antioxidants, and the degenerative diseases of aging. *Proc Natl Acad Sci U S A* 90(17):7915-22.
- Ames BN, Shigenaga MK and Hagen TM **1995**. Mitochondrial decay in aging. *Biochim Biophys Acta* 1271(1):165-70.
- Anderson S, Bankier AT, Barrell BG, de Bruijn MH et al. **1981**. Sequence and organization of the human mitochondrial genome. *Nature* 290(5806):457-65.
- Arnaudo E, Dalakas M, Shanske S, Moraes CT et al. **1991**. Depletion of muscle mitochondrial DNA in AIDS patients with zidovudine-induced myopathy. *Lancet* 337(8740):508-10.
- Attardi G, Yoneda M and Chomyn A **1995**. Complementation and segregation behavior of disease-causing mitochondrial DNA mutations in cellular model systems. *Biochim Biophys Acta* 1271(1):241-8.
- Barja G and Herrero A **2000**. Oxidative damage to mitochondrial DNA is inversely related to maximum life span in the heart and brain of mammals. *Faseb J* 14(2):312-8.
- Barrett TG, Bunday SE and Macleod AF **1995**. Neurodegeneration and diabetes: UK nationwide study of Wolfram (DIDMOAD) syndrome. *Lancet* 346(8988):1458-63.
- Barrett TG and Bunday SE **1997a**. Wolfram (DIDMOAD) syndrome. *J Med Genet* 34(10):838-41.
- Barrett TG, Bunday SE, Fielder AR and Good PA **1997b**. Optic atrophy in Wolfram (DIDMOAD) syndrome. *Eye* 11(Pt 6):882-8.
- Barrett TG, Scott-Brown M, Seller A, Bednarz A et al. **2000**. The mitochondrial genome in Wolfram syndrome. *J Med Genet* 37(6):463-6.
- Barrientos A, Casademont J, Rotig A, Miro O et al. **1996a**. Absence of relationship between the level of electron transport chain activities and aging in human skeletal muscle. *Biochem Biophys Res Commun* 229(2):536-9.
- Barrientos A, Casademont J, Saiz A, Cardellach F et al. **1996b**. Autosomal recessive Wolfram syndrome associated with an 8.5-kb mtDNA single deletion. *Am J Hum Genet* 58(5):963-70.
- Barrientos A, Volpini V, Casademont J, Genis D et al. **1996c**. A nuclear defect in the 4p16 region predisposes to multiple mitochondrial DNA deletions in families with Wolfram syndrome. *J Clin Invest* 97(7):1570-6.
- Berdanier CD and Everts HB **2001**. Mitochondrial DNA in aging and degenerative disease. *Mutat Res* 475(1-2):169-83.
- Bezold R, Hofmann S, Jaksch M, Kaufhold P et al. **1995**. DIDMOAD or Wolfram syndrome. A mitochondrial-mediated disorder. *Diabetes Care* 18(4):583-4.
- Blanche S, Tardieu M, Rustin P, Slama A et al. **1999**. Persistent mitochondrial dysfunction and perinatal exposure to antiretroviral nucleoside analogues. *Lancet* 354(9184):1084-9.
- Borruat FX, Hirt L and Regli F **1994**. Neuropathie optique alcool-tabagique: un piège diagnostique de la neuropathie optique de Leber. *Rev Neurol (Paris)* 150(11):799-801.
- Bossy-Wetzel E, Newmeyer DD and Green DR **1998**. Mitochondrial cytochrome c release in apoptosis occurs upstream of DEVD-specific caspase activation and independently of mitochondrial transmembrane depolarization. *Embo J* 17(1):37-49.
- Brenner C and Kroemer G **2000**. Apoptosis. Mitochondria—the death signal integrators. *Science* 289(5482):1150-1.
- Brini M, Pinton P, King MP, Davidson M et al. **1999**. A calcium signaling defect in the pathogenesis of a mitochondrial DNA inherited oxidative phosphorylation deficiency. *Nat Med* 5(8):951-4.
- Brinkman K, ter Hofstede HJ, Burger DM, Smeitink JA et al. **1998**. Adverse effects of reverse transcriptase inhibitors: mitochondrial toxicity as common pathway. *Aids* 12(14):1735-44.
- Brinkman K, Smeitink JA, Romijn JA and Reiss P **1999**. Mitochondrial toxicity induced by nucleoside-analogue reverse-transcriptase inhibitors is a key factor in the pathogenesis of antiretroviral-therapy-related lipodystrophy. *Lancet* 354(9184):1112-5.



- Brivet FG, Nion I, Megarbane B, Slama A *et al.* **2000**. Fatal lactic acidosis and liver steatosis associated with didanosine and stavudine treatment: a respiratory chain dysfunction? *J Hepatol* 32(2):364-5.
- Brown DT, Samuels DC, Michael EM, Turnbull DM *et al.* **2001**. Random genetic drift determines the level of mutant mtDNA in human primary oocytes. *Am J Hum Genet* 68(2):533-6.
- Brown MD, Sun F and Wallace DC **1997**. Clustering of Caucasian Leber hereditary optic neuropathy patients containing the 11778 or 14484 mutations on an mtDNA lineage. *Am J Hum Genet* 60(2):381-7.
- Brown MD, Trounce IA, Jun AS, Allen JC *et al.* **2000**. Functional analysis of lymphoblast and cybrid mitochondria containing the 3460, 11778, or 14484 Leber's hereditary optic neuropathy mitochondrial DNA mutation. *J Biol Chem* 275(51):39831-6.
- Bu XD and Rotter JI **1991**. X chromosome-linked and mitochondrial gene control of Leber hereditary optic neuropathy: evidence from segregation analysis for dependence on X chromosome inactivation. *Proc Natl Acad Sci U S A* 88(18):8198-202.
- Bu X and Rotter JI **1993**. Wolfram syndrome: a mitochondrial-mediated disorder?. *Lancet* 342(8871):598-600.
- Bundey S, Fielder A and Poulton K **1993**. Wolfram syndrome: mitochondrial disorder [letter]. *Lancet* 342(8878):1059-60.
- Bundey S, Poulton K, Whitwell H, Curtis E *et al.* **1992**. Mitochondrial abnormalities in the DIDMOAD syndrome. *J Inherit Metab Dis* 15(3):315-9.
- Cahill A, Wang X and Hoek JB **1997**. Increased oxidative damage to mitochondrial DNA following chronic ethanol consumption. *Biochem Biophys Res Commun* 235(2):286-90.
- Cahill A, Stabley GJ, Wang X and Hoek JB **1999**. Chronic ethanol consumption causes alterations in the structural integrity of mitochondrial DNA in aged rats. *Hepatology* 30(4):881-8.
- Carr A, Samaras K, Burton S, Law M *et al.* **1998a**. A syndrome of peripheral lipodystrophy, hyperlipidaemia and insulin resistance in patients receiving HIV protease inhibitors. *Aids* 12(7):F51-8.
- Carr A, Samaras K, Chisholm DJ and Cooper DA **1998b**. Pathogenesis of HIV-1-protease inhibitor-associated peripheral lipodystrophy, hyperlipidaemia, and insulin resistance. *Lancet* 351(9119):1881-3.
- Carr A, Samaras K, Thorisdottir A, Kaufmann GR *et al.* **1999**. Diagnosis, prediction, and natural course of HIV-1 protease-inhibitor-associated lipodystrophy, hyperlipidaemia, and diabetes mellitus: a cohort study. *Lancet* 353(9170):2093-9.
- Carr A, Miller J, Law M and Cooper DA **2000**. A syndrome of lipodystrophy, lactic acidemia and liver dysfunction associated with HIV nucleoside analogue therapy: contribution to protease inhibitor-related lipodystrophy syndrome. *Aids* 14(3):F25-32.
- Carr A, Morey A, Mallon P, Williams D *et al.* **2001**. Fatal portal hypertension, liver failure, and mitochondrial dysfunction after HIV-1 nucleoside analogue-induced hepatitis and lactic acidemia. *Lancet* 357(9266):1412-4.
- Carozzo R, Davidson MM, Walker WF, Hirano M *et al.* **1999**. Cellular and molecular studies in muscle and cultures from patients with multiple mitochondrial DNA deletions. *J Neurol Sci* 170(1):24-31.
- Casademont J, Barrientos A, Grau JM, Pedrol E *et al.* **1996**. The effect of zidovudine on skeletal muscle mtDNA in HIV-1 infected patients with mild or no muscle dysfunction. *Brain* 119(Pt 4):1357-64.
- Cassarino DS, Swerdlow RH, Parks JK, Parker WD, Jr. *et al.* **1998**. Cyclosporin A increases resting mitochondrial membrane potential in SY5Y cells and reverses the depressed mitochondrial membrane potential of Alzheimer's disease cybrids. *Biochem Biophys Res Commun* 248(1):168-73.
- Cavalli-Sforza LL and Piazza A **1993**. Human genomic diversity in Europe: a summary of recent research and prospects for the future. *Eur J Hum Genet* 1(1):3-18.
- Chinnery PF, Howell N, Lightowlers RN and Turnbull DM **1997**. Molecular pathology of MELAS and MERRF. The relationship between mutation load and clinical phenotypes. *Brain* 120(Pt 10):1713-21.
- Chinnery PF, Howell N, Andrews RM and Turnbull DM **1999**. Clinical mitochondrial genetics. *J Med Genet* 36(6):425-36.
- Chinnery PF, Johnson MA, Wardell TM, Singh-Kler R *et al.* **2000a**. The epidemiology of pathogenic mitochondrial DNA mutations. *Ann Neurol* 48(2):188-93.
- Chinnery PF, Thorburn DR, Samuels DC, White SL *et al.* **2000b**. The inheritance of mitochondrial DNA heteroplasmy: random drift, selection or both? *Trends Genet* 16(11):500-5.
- Chinnery PF and Turnbull DM **2000c**. Mitochondrial DNA mutations in the pathogenesis of human disease. *Mol Med Today* 6(11):425-32.
- Chretien D, Gallego J, Barrientos A, Casademont J *et al.* **1998**. Biochemical parameters for the diagnosis of mitochondrial respiratory chain deficiency in humans, and their lack of age-related changes. *Biochem J* 329(Pt 2):249-54.



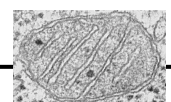
- Clayton DA and Vinograd J **1969**. Complex mitochondrial DNA in leukemic and normal human myeloid cells. *Proc Natl Acad Sci U S A* 62(4):1077-84.
- Collier DA, Barrett TG, Curtis D, Macleod A et al. **1996**. Linkage of Wolfram syndrome to chromosome 4p16.1 and evidence for heterogeneity. *Am J Hum Genet* 59(4):855-63.
- Corral-Debrinski M, Horton T, Lott MT, Shoffner JM et al. **1992**. Mitochondrial DNA deletions in human brain: regional variability and increase with advanced age. *Nat Genet* 2(4):324-9.
- Corte-Real HB, Macaulay VA, Richards MB, Hariti G et al. **1996**. Genetic diversity in the Iberian Peninsula determined from mitochondrial sequence analysis. *Ann Hum Genet* 60(Pt 4):331-50.
- Cortopassi GA, Shibata D, Soong NW and Arnheim N **1992**. A pattern of accumulation of a somatic deletion of mitochondrial DNA in aging human tissues. *Proc Natl Acad Sci U S A* 89(16):7370-4.
- Cullom ME, Heher KL, Miller NR, Savino PJ et al. **1993**. Leber's hereditary optic neuropathy masquerading as tobacco-alcohol amblyopia. *Arch Ophthalmol* 111(11):1482-5.
- Cunningham CC and Bailey SM **2001**. Ethanol consumption and liver mitochondria function. *Biol Signals Recept* 10(3-4):271-82.
- de la Asuncion JG, del Olmo ML, Sastre J, Millan A et al. **1998**. AZT treatment induces molecular and ultrastructural oxidative damage to muscle mitochondria. Prevention by antioxidant vitamins. *J Clin Invest* 102(1):4-9.
- Diegoli M, Rampino T, Maggio M, Grasso M et al. **1999**. A novel mitochondrial DNA mutation in the tRNASer(AGY) in multiple symmetric lipomatosis. *Eur J Hum Genet* 7(suppl 1):55.
- DiMauro S and Schon EA **1998**. Nuclear power and mitochondrial disease. *Nat Genet* 19(3):214-5.
- DiMauro S and Andreu AL **2000**. Mutations in mtDNA: are we scraping the bottom of the barrel? *Brain Pathol* 10(3):431-41.
- Duchen MR **2000**. Mitochondria and calcium: from cell signalling to cell death. *J Physiol* 529 Pt 1:57-68.
- Dunbar DR, Moonie PA, Jacobs HT and Holt IJ **1995**. Different cellular backgrounds confer a marked advantage to either mutant or wild-type mitochondrial genomes. *Proc Natl Acad Sci U S A* 92(14):6562-6.
- El Meziane A, Lehtinen SK, Hance N, Nijtmans LG et al. **1998**. A tRNA suppressor mutation in human mitochondria. *Nat Genet* 18(4):350-3.
- El-Shanti H, Lidral AC, Jarrah N, Druhan L et al. **2000**. Homozygosity Mapping Identifies an Additional Locus for Wolfram Syndrome on Chromosome 4q. *Am J Hum Genet* 66(4):1229-1236.
- Elson JL, Andrews RM, Chinnery PF, Lightowlers RN et al. **2001a**. Analysis of European mtDNAs for recombination. *Am J Hum Genet* 68(1):145-153.
- Elson JL, Samuels DC, Turnbull DM and Chinnery PF **2001b**. Random intracellular drift explains the clonal expansion of mitochondrial DNA mutations with age. *Am J Hum Genet* 68(3):802-6.
- Enríquez JA, Chomyn A and Attardi G **1995**. MtDNA mutation in MERRF syndrome causes defective aminoacylation of tRNA(Lys) and premature translation termination. *Nat Genet* 10(1):47-55.
- Enríquez JA, Martínez-Azorín F, Garesse R, López-Pérez MJ et al. **1998**. Sistema genético mitocondrial humano. *Rev Neurol* 26 Suppl 1:S21-6.
- Enríquez JA, Fernández-Silva P, Garrido-Pérez N, López-Pérez MJ et al. **1999**. Direct regulation of mitochondrial RNA synthesis by thyroid hormone. *Mol Cell Biol* 19(1):657-70.
- Estivill X, Govea N, Barcelo E, Badenas C et al. **1998**. Familial progressive sensorineural deafness is mainly due to the mtDNA A1555G mutation and is enhanced by treatment of aminoglycosides [see comments]. *Am J Hum Genet* 62(1):27-35.
- Eyre-Walker A **2000**. Do mitochondria recombine in humans? *Philos Trans R Soc Lond B Biol Sci* 355(1403):1573-80.
- Faivre L, Cormier-Daire V, Chretien D, Christoph von Kleist-Retzow J et al. **2000**. Determination of enzyme activities for prenatal diagnosis of respiratory chain deficiency. *Prenat Diagn* 20(9):732-7.
- Ferriero DM, Sheldon RA and Domingo J **1992**. Somatostatin is altered in developing retina from ethanol-exposed rats. *Neurosci Lett* 147(1):29-32.
- Flexner C **1998**. HIV-protease inhibitors. *N Engl J Med* 338(18):1281-92.
- Fliiss MS, Usadel H, Caballero OL, Wu L et al. **2000**. Facile detection of mitochondrial DNA mutations in tumors and bodily fluids. *Science* 287(5460):2017-9.
- Fraser FC and Gunn T **1977**. Diabetes mellitus, diabetes insipidus, and optic atrophy. An autosomal recessive syndrome? *J Med Genet* 14(3):190-3.
- Gabreels BA, Swaab DF, de Kleijn DP, Dean A et al. **1998**. The vasopressin precursor is not processed in the hypothalamus of Wolfram syndrome patients with diabetes insipidus: evidence for the involvement of PC2 and 7B2. *J Clin Endocrinol Metab* 83(11):4026-33.
- Galluzzi P, Filisomi G, Vallone IM, Bardelli AM et al. **1999**. MRI of Wolfram syndrome (DIDMOAD). *Neuroradiology* 41(10):729-31.
- Gamez J, Playan A, Andreu AL, Bruno C et al. **1998**. Familial multiple symmetric lipomatosis associated



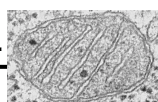
- with the A8344G mutation of mitochondrial DNA. *Neurology* 51(1):258-60.
- Genís D, Davalos A, Molins A and Ferrer I **1997**. Wolfram syndrome: a neuropathological study. *Acta Neuropathol (Berl)* 93(4):426-9.
- Gerbitz KD **1999**. Reflexions on a newly discovered diabetogenic gene, wolframin (WFS1). *Diabetologia* 42(5):627-30.
- Ghribi O, DeWitt DA, Forbes MS, Herman MM et al. **2001**. Co-involvement of mitochondria and endoplasmic reticulum in regulation of apoptosis: changes in cytochrome c, Bcl-2 and Bax in the hippocampus of aluminum-treated rabbits. *Brain Res* 903(1-2):66-73.
- Giles RE, Blanc H, Cann HM and Wallace DC **1980**. Maternal inheritance of human mitochondrial DNA. *Proc Natl Acad Sci U S A* 77(11):6715-9.
- Graff C, Clayton DA and Larsson NG **1999**. Mitochondrial medicine—recent advances. *J Intern Med* 246(1):11-23.
- Guan MX, Fischel-Ghodsian N and Attardi G **2001**. Nuclear background determines biochemical phenotype in the deafness-associated mitochondrial 12S rRNA mutation. *Hum Mol Genet* 10(6):573-80.
- Handoko HY, Wirapati PJ, Sudoyo HA, Sitepu M et al. **1998**. Meiotic breakpoint mapping of a proposed X linked visual loss susceptibility locus in Leber's hereditary optic neuropathy. *J Med Genet* 35(8):668-71.
- Hardy C, Khanim F, Torres R, Scott-Brown M et al. **1999**. Clinical and molecular genetic analysis of 19 Wolfram syndrome kindreds demonstrating a wide spectrum of mutations in WFS1. *Am J Hum Genet* 65(5):1279-90.
- Hayashi J, Ohta S, Kikuchi A, Takemitsu M et al. **1991**. Introduction of disease-related mitochondrial DNA deletions into HeLa cells lacking mitochondrial DNA results in mitochondrial dysfunction. *Proc Natl Acad Sci U S A* 88(23):10614-8.
- Hirano M, Silvestri G, Blake DM, Lombes A et al. **1994**. Mitochondrial neurogastrointestinal encephalomyopathy (MNGIE): clinical, biochemical, and genetic features of an autosomal recessive mitochondrial disorder. *Neurology* 44(4):721-7.
- Hirano M and Vu TH **2000**. Defects of intergenomic communication: where do we stand? *Brain Pathol* 10(3):451-61.
- Hofmann S, Bezold R, Jaksch M, Kaufhold P et al. **1997a**. Analysis of the mitochondrial DNA from patients with Wolfram (DIDMOAD) syndrome. *Mol Cell Biochem* 174(1-2):209-13.
- Hofmann S, Bezold R, Jaksch M, Obermaier-Kusser B et al. **1997b**. Wolfram (DIDMOAD) syndrome and Leber hereditary optic neuropathy (LHON) are associated with distinct mitochondrial DNA haplotypes. *Genomics* 39(1):8-18.
- Howell N, Bindoff LA, McCullough DA, Kubacka I et al. **1991**. Leber hereditary optic neuropathy: identification of the same mitochondrial ND1 mutation in six pedigrees. *Am J Hum Genet* 49(5):939-50.
- Howell N **1998**. Leber hereditary optic neuropathy: respiratory chain dysfunction and degeneration of the optic nerve. *Vision Res* 38(10):1495-504.
- Inoue H, Tanizawa Y, Wasson J, Behn P et al. **1998**. A gene encoding a transmembrane protein is mutated in patients with diabetes mellitus and optic atrophy (Wolfram syndrome). *Nat Genet* 20(2):143-8.
- Inoue K, Nakada K, Ogura A, Isobe K et al. **2000**. Generation of mice with mitochondrial dysfunction by introducing mouse mtDNA carrying a deletion into zygotes. *Nat Genet* 26(2):176-81.
- Ivanov PL, Wadhams MJ, Roby RK, Holland MM et al. **1996**. Mitochondrial DNA sequence heteroplasmy in the Grand Duke of Russia Georgij Romanov establishes the authenticity of the remains of Tsar Nicholas II. *Nat Genet* 12(4):417-20.
- Jackson MJ, Bindoff LA, Weber K, Wilson JN et al. **1994**. Biochemical and molecular studies of mitochondrial function in diabetes insipidus, diabetes mellitus, optic atrophy, and deafness. *Diabetes Care* 17(7):728-33.
- Jenuth JP, Peterson AC, Fu K and Shoubridge EA **1996**. Random genetic drift in the female germline explains the rapid segregation of mammalian mitochondrial DNA. *Nat Genet* 14(2):146-51.
- Johns DR, Smith KH, Miller NR, Sulewski ME et al. **1993**. Identical twins who are discordant for Leber's hereditary optic neuropathy. *Arch Ophthalmol* 111(11):1491-4.
- Johnson KR, Zheng QY, Bykhovskaya Y, Spirina O et al. **2001**. A nuclear-mitochondrial DNA interaction affecting hearing impairment in mice. *Nat Genet* 27(2):191-4.
- Kajander OA, Kunnas TA, Perola M, Lehtinen SK et al. **1999a**. Long-extension PCR to detect deleted mitochondrial DNA molecules is compromised by technical artefacts. *Biochem Biophys Res Commun* 254(2):507-14.
- Kajander OA, Poulton J, Spelbrink JN, Rovio A et al. **1999b**. The dangers of extended PCR in the clinic. *Nat Med* 5(9):965-6.
- Kajander OA, Rovio AT, Majamaa K, Poulton J et al. **2000**. Human mtDNA sublimons resemble rearranged mitochondrial genomes found in pathological states. *Hum Mol Genet* 9(19):2821-35.
- Kakuda TN, Brundage RC, Anderson PL and Fletcher CV **1999**. Nucleoside reverse transcriptase inhibitor



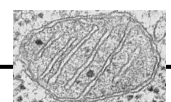
- induced mitochondrial toxicity as an etiology for lipodystrophy [letter]. *Aids* 13(16):2311-2.
- Kalman B and Alder H **1998**. Is the mitochondrial DNA involved in determining susceptibility to multiple sclerosis? *Acta Neurol Scand* 98(4):232-7.
- Kaneda H, Hayashi J, Takahama S, Taya C et al. **1995**. Elimination of paternal mitochondrial DNA in intraspecific crosses during early mouse embryogenesis. *Proc Natl Acad Sci U S A* 92(10):4542-6.
- Karasik A, O'Hara C, Srikanta S, Swift M et al. **1989**. Genetically programmed selective islet beta-cell loss in diabetic subjects with Wolfram's syndrome. *Diabetes Care* 12(2):135-8.
- Kaukonen J, Juselius JK, Tiranti V, Kytälä A et al. **2000**. Role of adenine nucleotide translocator 1 in mtDNA maintenance. *Science* 289(5480):782-5.
- Khanim F, Kirk J, Latif F and Barrett TG **2001**. WFS1/wolframin mutations, Wolfram syndrome, and associated diseases. *Hum Mutat* 17(5):357-67.
- King MP and Attardi G **1989**. Human cells lacking mtDNA: repopulation with exogenous mitochondria by complementation. *Science* 246(4929):500-3.
- Kinsley BT, Swift M, Dumont RH and Swift RG **1995**. Morbidity and mortality in the Wolfram syndrome. *Diabetes Care* 18(12):1566-70.
- Kluck RM, Bossy-Wetzel E, Green DR and Newmeyer DD **1997**. The release of cytochrome c from mitochondria: a primary site for Bcl-2 regulation of apoptosis. *Science* 275(5303):1132-6.
- Koehler CM, Leuenberger D, Merchant S, Renold A et al. **1999**. Human deafness dystonia syndrome is a mitochondrial disease. *Proc Natl Acad Sci U S A* 96(5):2141-6.
- Kopsidas G, Kovalenko SA, Kelso JM and Linnane AW **1998**. An age-associated correlation between cellular bioenergy decline and mtDNA rearrangements in human skeletal muscle. *Mutat Res* 421(1):27-36.
- Krings M, Stone A, Schmitz RW, Krainitzki H et al. **1997**. Neandertal DNA sequences and the origin of modern humans. *Cell* 90(1):19-30.
- Krumsiek J, Kruger C and Patzold U **1985**. Tobacco-alcohol amblyopia neuro-ophthalmological findings and clinical course. *Acta Neurol Scand* 72(2):180-7.
- Lamminen T, Huoponen K, Sistonen P, Juvonen V et al. **1997**. mtDNA haplotype analysis in Finnish families with leber hereditary optic neuroretinopathy. *Eur J Hum Genet* 5(5):271-9.
- Larsson NG, Holme E, Kristiansson B, Oldfors A et al. **1990**. Progressive increase of the mutated mitochondrial DNA fraction in Kearns-Sayre syndrome. *Pediatr Res* 28(2):131-6.
- Larsson NG, Andersen O, Holme E, Oldfors A et al. **1991**. Leber's hereditary optic neuropathy and complex I deficiency in muscle. *Ann Neurol* 30(5):701-8.
- Lewis W and Dalakas MC **1995**. Mitochondrial toxicity of antiviral drugs. *Nat Med* 1(5):417-22.
- Lieber CS **1993**. Herman Award Lecture, 1993: a personal perspective on alcohol, nutrition, and the liver. *Am J Clin Nutr* 58(3):430-42.
- Liu VW, Zhang C and Nagley P **1998**. Mutations in mitochondrial DNA accumulate differentially in three different human tissues during ageing. *Nucleic Acids Res* 26(5):1268-75.
- Lo JC, Mulligan K, Tai VW, Algren H et al. **1998**. "Buffalo hump" in men with HIV-1 infection. *Lancet* 351(9106):867-70.
- Lombard J **1998**. Autism: a mitochondrial disorder? *Med Hypotheses* 50(6):497-500.
- Luft R, Ikkos D, Palmieri G, Ernster L et al. **1962**. A case of severe hypermetabolism of nonthyroid origin with a defect in the maintenance of mitochondrial respiratory control: a correlated clinical, biochemical, and morphological study. *J Clin Invest* 41:1776-804.
- Madge S, Kinloch-de-Loes S, Mercey D, Johnson MA et al. **1999**. Lipodystrophy in patients naive to HIV protease inhibitors. *Aids* 13(6):735-7.
- Mansouri A, Fromenty B, Berson A, Robin MA et al. **1997**. Multiple hepatic mitochondrial DNA deletions suggest premature oxidative aging in alcoholic patients. *J Hepatol* 27(1):96-102.
- Marchetti P, Castedo M, Susin SA, Zamzami N et al. **1996**. Mitochondrial permeability transition is a central coordinating event of apoptosis. *J Exp Med* 184(3):1155-60.
- Martínez E and Gatell J **1998**. Metabolic abnormalities and use of HIV-1 protease inhibitors. *Lancet* 352(9130):821-2.
- Martínez E, Mocroft A, García-Viejo MA, Pérez-Cuevas JB et al. **2001**. Risk of lipodystrophy in HIV-1-infected patients treated with protease inhibitors: a prospective cohort study. *Lancet* 357:592-98.
- Masanés F, Barrientos A, Cebrian M, Pedrol E et al. **1998**. Clinical, histological and molecular reversibility of zidovudine myopathy. *J Neurol Sci* 159(2):226-8.
- Mattson MP, LaFerla FM, Chan SL, Leissring MA et al. **2000**. Calcium signaling in the ER: its role in neuronal plasticity and neurodegenerative disorders. *Trends Neurosci* 23(5):222-9.
- Mazat JP, Rossignol R, Malgat M, Rocher C et al. **2001**. What do mitochondrial diseases teach us about normal mitochondrial functions...that we already knew: threshold expression of mitochondrial defects. *Biochim Biophys Acta* 1504(1):20-30.



- Mecocci P, MacGarvey U, Kaufman AE, Koontz D et al. **1993**. Oxidative damage to mitochondrial DNA shows marked age-dependent increases in human brain. *Ann Neurol* 34(4):609-16.
- Mecocci P, MacGarvey U and Beal MF **1994**. Oxidative damage to mitochondrial DNA is increased in Alzheimer's disease. *Ann Neurol* 36(5):747-51.
- Medina DJ, Tsai CH, Hsiung GD and Cheng YC **1994**. Comparison of mitochondrial morphology, mitochondrial DNA content, and cell viability in cultured cells treated with three anti-human immunodeficiency virus dideoxynucleosides. *Antimicrob Agents Chemother* 38(8):1824-8.
- Mhiri C, Baudrimont M, Bonne G, Geny C et al. **1991**. Zidovudine myopathy: a distinctive disorder associated with mitochondrial dysfunction. *Ann Neurol* 29(6):606-14.
- Milpied-Homsy B, Krempf M, Gueglio B, Raffi F et al. **1999**. ["Buffalo neck": an unintended secondary effect of treatment with anti-HIV protease inhibitors]. *Ann Dermatol Venereol* 126(3):254-6.
- Mojon DS, Herbert J, Sadiq SA, Miller JR et al. **1999**. Leber's hereditary optic neuropathy mitochondrial DNA mutations at nucleotides 11778 and 3460 in multiple sclerosis. *Ophthalmologica* 213(3):171-5.
- Morris AA and Carr A **1999**. HIV nucleoside analogues: new adverse effects on mitochondria? *Lancet* 354(9184):1046-7.
- Moyle G **2001**. Mitochondrial toxicity hypothesis for lipotrophy: a refutation. *Aids* 15(3):413-5.
- Muratovska A, Lightowlers RN, Taylor RW, Turnbull DM et al. **2001**. Targeting peptide nucleic acid (PNA) oligomers to mitochondria within cells by conjugation to lipophilic cations: implications for mitochondrial DNA replication, expression and disease. *Nucleic Acids Res* 29(9):1852-1863.
- Nardin RA and Johns DR **2001**. Mitochondrial dysfunction and neuromuscular disease. *Muscle Nerve* 24(2):170-91.
- Nass MMK and Nass S **1963**. Intramitochondrial fibers with DNA characteristics. I. Fixation and electron staining reactions. *J Cell Biol* 19:593-611.
- Neckelmann N, Li K, Wade RP, Shuster R et al. **1987**. cDNA sequence of a human skeletal muscle ADP/ATP translocator: lack of a leader peptide, divergence from a fibroblast translocator cDNA, and coevolution with mitochondrial DNA genes. *Proc Natl Acad Sci U S A* 84(21):7580-4.
- Nishino I, Spinazzola A and Hirano M **1999**. Thymidine phosphorylase gene mutations in MNGIE, a human mitochondrial disorder. *Science* 283(5402):689-92.
- Ohata T, Koizumi A, Kayo T, Shoji Y et al. **1998**. Evidence of an increased risk of hearing loss in heterozygous carriers in a Wolfram syndrome family. *Hum Genet* 103(4):470-4.
- Papadimitriou A, Comi GP, Hadjigeorgiou GM, Bordonni A et al. **1998**. Partial depletion and multiple deletions of muscle mtDNA in familial MNGIE syndrome. *Neurology* 51(4):1086-92.
- Parkes TL, Elia AJ, Dickinson D, Hilliker AJ et al. **1998**. Extension of Drosophila lifespan by overexpression of human SOD1 in motorneurons. *Nat Genet* 19(2):171-4.
- Pilz D, Quarrell OW and Jones EW **1994**. Mitochondrial mutation commonly associated with Leber's hereditary optic neuropathy observed in a patient with Wolfram syndrome (DIDMOAD). *J Med Genet* 31(4):328-30.
- Pinazo-Duran MD, Renau-Piqueras J, Guerri C and Stromland K **1997**. Optic nerve hypoplasia in fetal alcohol syndrome: an update. *Eur J Ophthalmol* 7(3):262-70.
- Polymeropoulos MH, Swift RG and Swift M **1994**. Linkage of the gene for Wolfram syndrome to markers on the short arm of chromosome 4. *Nat Genet* 8(1):95-7.
- Poulton J, Deadman ME, Bindoff L, Morten K et al. **1993**. Families of mtDNA re-arrangements can be detected in patients with mtDNA deletions: duplications may be a transient intermediate form. *Hum Mol Genet* 2(1):23-30.
- Poulton J, Macaulay V and Marchington DR **1998**. Mitochondrial genetics '98 is the bottleneck cracked? *Am J Hum Genet* 62(4):752-7.
- Pozzan T, Magalhaes P and Rizzuto R **2000**. The comeback of mitochondria to calcium signalling. *Cell Calcium* 28(5-6):279-83.
- Reynier P, Penisson-Besnier I, Moreau C, Savagner F et al. **1999**. mtDNA haplogroup J: a contributing factor of optic neuritis. *Eur J Hum Genet* 7(3):404-6.
- Riordan-Eva P and Harding AE **1995**. Leber's hereditary optic neuropathy: the clinical relevance of different mitochondrial DNA mutations. *J Med Genet* 32(2):81-7.
- Rizzuto R, Pinton P, Carrington W, Fay FS et al. **1998**. Close contacts with the endoplasmic reticulum as determinants of mitochondrial Ca²⁺ responses. *Science* 280(5370):1763-6.
- Rizzuto R, Bernardi P and Pozzan T **2000**. Mitochondria as all-round players of the calcium game. *J Physiol* 529 Pt 1:37-47.
- Rodríguez-Santiago B, Casademont J and Nunes V **2001**. Is mitochondrial DNA depletion involved in Alzheimer's disease? *Eur J Hum Genet* 9(4):279-85.
- Rosen DR **1993**. Mutations in Cu/Zn superoxide dismutase gene are associated with familial amyotrophic lateral sclerosis. *Nature* 364(6435):362.



- Rossignol R, Malgat M, Mazat JP and Letellier T **1999**. Threshold effect and tissue specificity. Implication for mitochondrial cytopathies. *J Biol Chem* 274(47):33426-32.
- Rossignol R, Letellier T, Malgat M, Rocher C et al. **2000**. Tissue variation in the control of oxidative phosphorylation: implication for mitochondrial diseases. *Biochem J* 347 Pt 1:45-53.
- Rötig A, Cormier V, Chatelain P, Francois R et al. **1993**. Deletion of mitochondrial DNA in a case of early-onset diabetes mellitus, optic atrophy, and deafness (Wolfram syndrome, MIM 222300). *J Clin Invest* 91(3):1095-8.
- Ruiz-Pesini E, Lapena AC, Díez C, Álvarez E et al. **2000**. Seminal quality correlates with mitochondrial functionality. *Clin Chim Acta* 300(1-2):97-105.
- Saint-Marc T, Partisani M, Poizot-Martin I, Bruno F et al. **1999**. A syndrome of peripheral fat wasting (lipodystrophy) in patients receiving long-term nucleoside analogue therapy. *Aids* 13(13):1659-67.
- Scaife JF **1966**. The effect of lethal doses of x-irradiation on the enzymatic activity of mitochondrial cytochrome c. *Can J Biochem* 44(4):433-48.
- Schon EA **2000**. Mitochondrial genetics and disease. *Trends Biochem Sci* 25(11):555-60.
- Scolding NJ, Kellar-Wood HF, Shaw C, Shneerson JM et al. **1996**. Wolfram syndrome: hereditary diabetes mellitus with brainstem and optic atrophy. *Ann Neurol* 39(3):352-60.
- Shaikh S, Ta C, Basham AA and Mansour S **2001**. Leber hereditary optic neuropathy associated with antiretroviral therapy for human immunodeficiency virus infection. *Am J Ophthalmol* 131(1):143-5.
- Shannon P, Becker L and Deck J **1999**. Evidence of widespread axonal pathology in Wolfram syndrome. *Acta Neuropathol (Berl)* 98(3):304-8.
- Shen CC, Wertelecki W, Driggers WJ, LeDoux SP et al. **1995**. Repair of mitochondrial DNA damage induced by bleomycin in human cells. *Mutat Res* 337(1):19-23.
- Shoubridge EA, Karpati G and Hastings KE **1990**. Deletion mutants are functionally dominant over wild-type mitochondrial genomes in skeletal muscle fiber segments in mitochondrial disease. *Cell* 62(1):43-9.
- Shoubridge EA, Johns T and Karpati G **1997**. Complete restoration of a wild-type mtDNA genotype in regenerating muscle fibres in a patient with a tRNA point mutation and mitochondrial encephalomyopathy. *Hum Mol Genet* 6(13):2239-42.
- Spelbrink JN, Li FY, Tiranti V, Nikali K et al. **2001**. Human mitochondrial DNA deletions associated with mutations in the gene encoding Twinkle, a phage T7 gene 4-like protein localized in mitochondria. *Nat Genet* 28(3):223-31.
- Stierum RH, Dianov GL and Bohr VA **1999**. Single-nucleotide patch base excision repair of uracil in DNA by mitochondrial protein extracts. *Nucleic Acids Res* 27(18):3712-9.
- Strom TM, Hortnagel K, Hofmann S, Gekeler F et al. **1998**. Diabetes insipidus, diabetes mellitus, optic atrophy and deafness (DIDMOAD) caused by mutations in a novel gene (wolframin) coding for a predicted transmembrane protein. *Hum Mol Genet* 7(13):2021-8.
- Sue CM and Schon EA **2000**. Mitochondrial respiratory chain diseases and mutations in nuclear DNA: a promising start? *Brain Pathol* 10(3):442-50.
- Sutovsky P, Moreno RD, Ramalho-Santos J, Dominko T et al. **2000**. Ubiquitinated sperm mitochondria, selective proteolysis, and the regulation of mitochondrial inheritance in mammalian embryos. *Biol Reprod* 63(2):582-90.
- Sweeney MG, Davis MB, Lashwood A, Brockington M et al. **1992**. Evidence against an X-linked locus close to DXS7 determining visual loss susceptibility in British and Italian families with Leber hereditary optic neuropathy. *Am J Hum Genet* 51(4):741-8.
- Swift RG, Sadler DB and Swift M **1990**. Psychiatric findings in Wolfram syndrome homozygotes. *Lancet* 336(8716):667-9.
- Swift RG, Perkins DO, Chase CL, Sadler DB et al. **1991**. Psychiatric disorders in 36 families with Wolfram syndrome. *Am J Psychiatry* 148(6):775-9.
- Swift RG, Polymeropoulos MH, Torres R and Swift M **1998**. Predisposition of Wolfram syndrome heterozygotes to psychiatric illness. *Mol Psychiatry* 3(1):86-91.
- t Hart LM, Jansen JJ, Lemkes HH, de Knijff P et al. **1996**. Heteroplasmy levels of a mitochondrial gene mutation associated with diabetes mellitus decrease in leucocyte DNA upon aging. *Hum Mutat* 7(3):193-7.
- Takeda K, Inoue H, Tanizawa Y, Matsuzaki Y et al. **2001**. WFS1 (Wolfram syndrome 1) gene product: predominant subcellular localization to endoplasmic reticulum in cultured cells and neuronal expression in rat brain. *Hum Mol Genet* 10(5):477-484.
- Tatton WG and Chalmers-Redman RM **1998**. Mitochondria in neurodegenerative apoptosis: an opportunity for therapy? *Ann Neurol* 44(3 Suppl 1):S134-41.
- Taylor RW, Chinnery PF, Turnbull DM and Lightowlers RN **1997**. Selective inhibition of mutant human mitochondrial DNA replication in vitro by peptide nucleic acids. *Nat Genet* 15(2):212-5.



- Torrioni A, Petrozzi M, D'Urbano L, Sellitto D *et al.* **1997**. Haplotype and phylogenetic analyses suggest that one European-specific mtDNA background plays a role in the expression of Leber hereditary optic neuropathy by increasing the penetrance of the primary mutations 11778 and 14484. *Am J Hum Genet* 60(5):1107-21.
- Van Goethem G, Dermaut B, Lofgren A, Martin JJ *et al.* **2001**. Mutation of POLG is associated with progressive external ophthalmoplegia characterized by mtDNA deletions. *Nat Genet* 28(3):211-2.
- Vanopdenbosch L, Dubois B, D'Hooghe MB, Meire F *et al.* **2000**. Mitochondrial mutations of Leber's hereditary optic neuropathy: a risk factor for multiple sclerosis. *J Neurol* 247(7):535-43.
- Viraben R and Aquilina C **1998**. Indinavir-associated lipodystrophy. *Aids* 12(6):F37-9.
- Vora AJ and Lilleyman JS **1993**. Wolfram syndrome: mitochondrial disorder [letter]. *Lancet* 342(8878):1059.
- Wallace DC **1986**. Mitotic segregation of mitochondrial DNAs in human cell hybrids and expression of chloramphenicol resistance. *Somat Cell Mol Genet* 12(1):41-9.
- Wallace DC, Singh G, Lott MT, Hodge JA *et al.* **1988**. Mitochondrial DNA mutation associated with Leber's hereditary optic neuropathy. *Science* 242(4884):1427-30.
- Wallace DC **1999a**. Mitochondrial diseases in man and mouse. *Science* 283(5407):1482-8.
- Wallace DC, Brown MD and Lott MT **1999b**. Mitochondrial DNA variation in human evolution and disease. *Gene* 238(1):211-30.
- Wallace DC **2001**. A mitochondrial paradigm for degenerative diseases and ageing. *Novartis Found Symp* 235:247-63.
- Weber K, Wilson JN, Taylor L, Brierley E *et al.* **1997**. A new mtDNA mutation showing accumulation with time and restriction to skeletal muscle. *Am J Hum Genet* 60(2):373-80.
- White SL, Collins VR, Wolfe R, Cleary MA *et al.* **1999a**. Genetic counseling and prenatal diagnosis for the mitochondrial DNA mutations at nucleotide 8993. *Am J Hum Genet* 65(2):474-82.
- White SL, Shanske S, McGill JJ, Mountain H *et al.* **1999b**. Mitochondrial DNA mutations at nucleotide 8993 show a lack of tissue- or age-related variation. *J Inher Metab Dis* 22(8):899-914.
- Wolfram DJ and Wagener HP **1938**. Diabetes mellitus and simple optic atrophy among siblings: report of four cases. *Mayo Clin Proc* 13:715-718.
- Yoneda M, Chomyn A, Martinuzzi A, Hurko O *et al.* **1992**. Marked replicative advantage of human mtDNA carrying a point mutation that causes the MELAS encephalomyopathy. *Proc Natl Acad Sci U S A* 89(23):11164-8.
- Zamzami N, Marchetti P, Castedo M, Hirsch T *et al.* **1996**. Inhibitors of permeability transition interfere with the disruption of the mitochondrial transmembrane potential during apoptosis. *FEBS Lett* 384(1):53-7.
- Zamzami N, Hirsch T, Dallaporta B, Petit PX *et al.* **1997**. Mitochondrial implication in accidental and programmed cell death: apoptosis and necrosis. *J Bioenerg Biomembr* 29(2):185-93.
- Zeviani M, Servidei S, Gellera C, Bertini E *et al.* **1989**. An autosomal dominant disorder with multiple deletions of mitochondrial DNA starting at the D-loop region. *Nature* 339(6222):309-11.

